

Hardwick

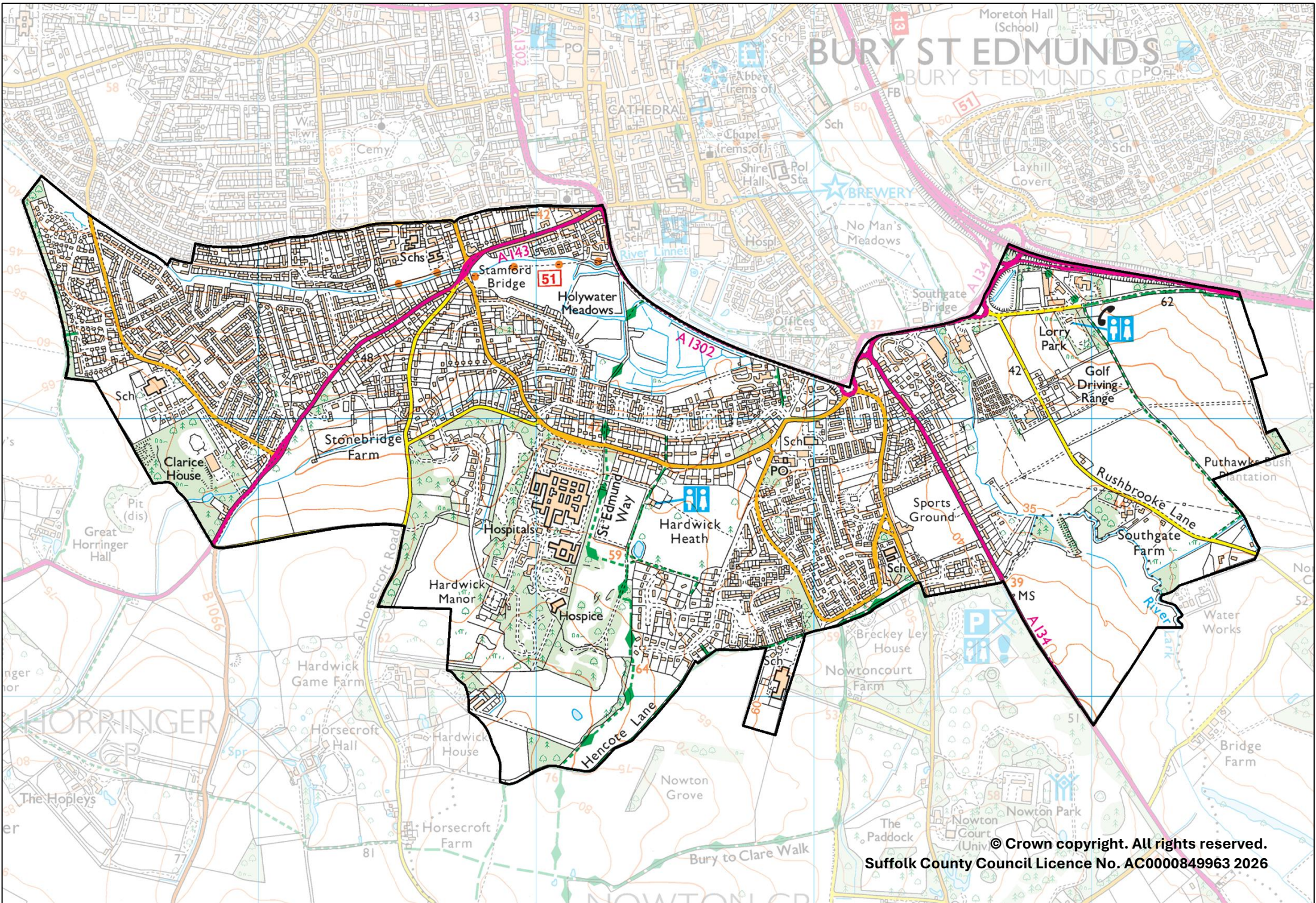
County Electoral Division profile
May 2026

This division comprises Southgate and Westgate Wards in their entirety



BURY ST EDMUNDS

BURY ST EDMUNDS CP



Contents

- Demographic Profile: Age & Ethnicity
- Economy and Labour Market
- Schools & NEET
- Index of Multiple Deprivation
- Health
- Crime & Community Safety
- Additional Information
- Data Sources

Electoral Division Profiles: an introduction

These profiles have been produced to support elected members, constituents and other interested parties in understanding the demographic, economic, social and educational profile of their neighbourhoods. We have used the latest data available at the time of publication.

Much more data is available from national and local sources than is captured here, but it is hoped that the profile will be a useful starting point for discussion, where local knowledge and experience can be used to flesh out and illuminate the information presented here.

The profile can be used to help look at some fundamental questions e.g.

- Does the age profile of the population match or differ from the national profile?
- Is there evidence of the ageing profile of the county in all the wards in the Division or just some?
- How diverse is the community in terms of ethnicity?
- What is the impact of deprivation on families and residents?
- Does there seem to be a link between deprivation and school performance?
- What is the breakdown of employment sectors in the area?
- Is it a relatively healthy area compared to the rest of the district or county?
- What sort of crime is prevalent in the community?

A vast amount of additional data is available on the **Suffolk Observatory**

www.suffolkobservatory.info

The Suffolk Observatory is a free online resource that contains all Suffolk's vital statistics; it is the one-stop-shop for information and intelligence about Suffolk. Through data, reports and maps, the Suffolk Observatory provides a comprehensive picture of the County. It is a great source for useful facts and figures that can be used for writing reports and presentations, informing strategic and business planning, preparing funding applications or supporting academic research. Data is presented around the key themes of population, children and young people, health and social care, housing, crime and community safety, deprivation, economy and employment and environment. All areas of the county are covered, right down to district, electoral division, ward and parish level, with information easily accessible in a variety of formats. You can also build your own reports for custom areas.

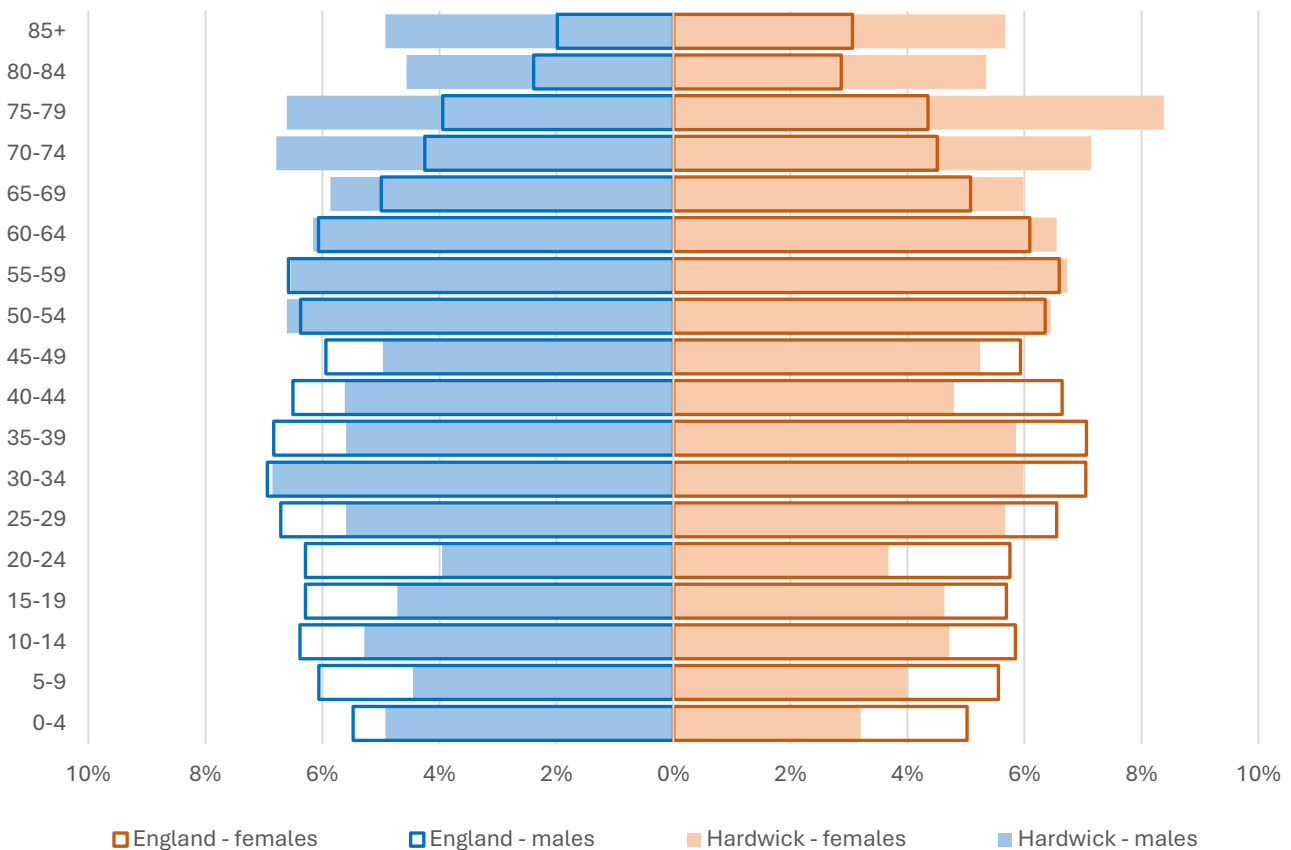
Technical Notes:

1. Where electoral divisions do not exactly match the boundaries at which the data is available (e.g. ward, Output Area or Lower Super Output Area), we have adopted a "best-fit" approach to produce a dataset.
2. District, county and national level data is provided where possible to provide a context for comparisons.

Demographic Profile - Age

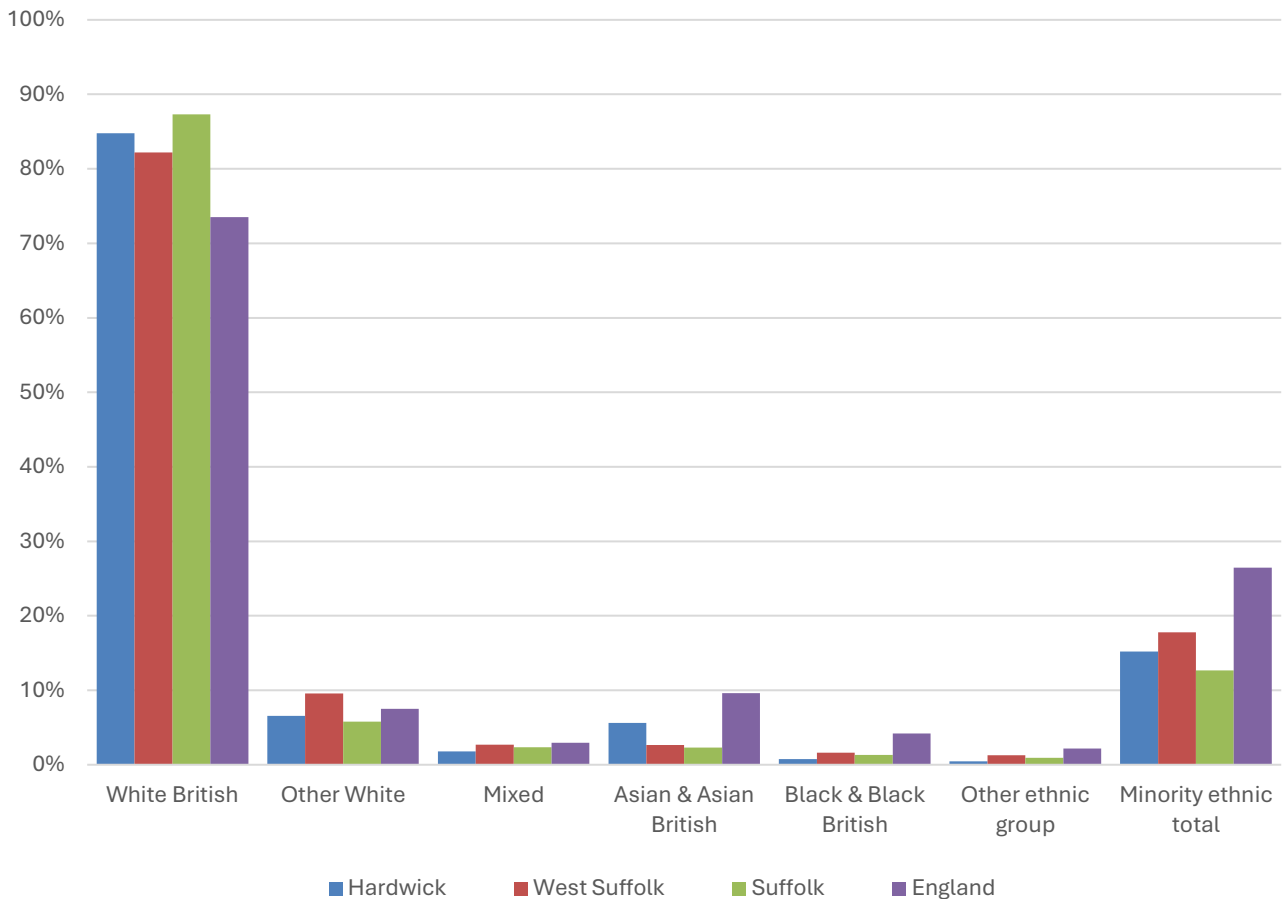
In mid-2024, the estimated population of Hardwick stood at 9,352, a decrease of 5.2% over the past decade. The age structure of the component wards and the division as a whole is set out below.

	Hardwick Division	Westgate Ward	Southgate Ward
All Ages	9,352	5,289	4,063
0-4	376	207	169
5-9	394	238	156
10-14	466	261	205
15-19	437	244	193
20-24	356	200	156
25-29	527	285	242
30-34	598	298	300
35-39	536	280	256
40-44	485	289	196
45-49	478	276	202
50-54	610	316	294
55-59	621	370	251
60-64	595	343	252
65-69	554	313	241
70-74	652	381	271
75-79	705	404	301
80-84	465	282	183
85+	497	302	195



- The age pyramid for Hardwick division shows a larger proportion of people aged 60 and over than in England as a whole.
- Approaching one third (30.7%) of the population of Hardwick is of retirement age. The England figure is 18.7%.
- The most common age group in the division is 75-79-year-olds (7.5% of the local population), followed by 70-74-year-olds (7%), and 55-59-year-olds (6.6%).

Demographic Profile - Ethnicity

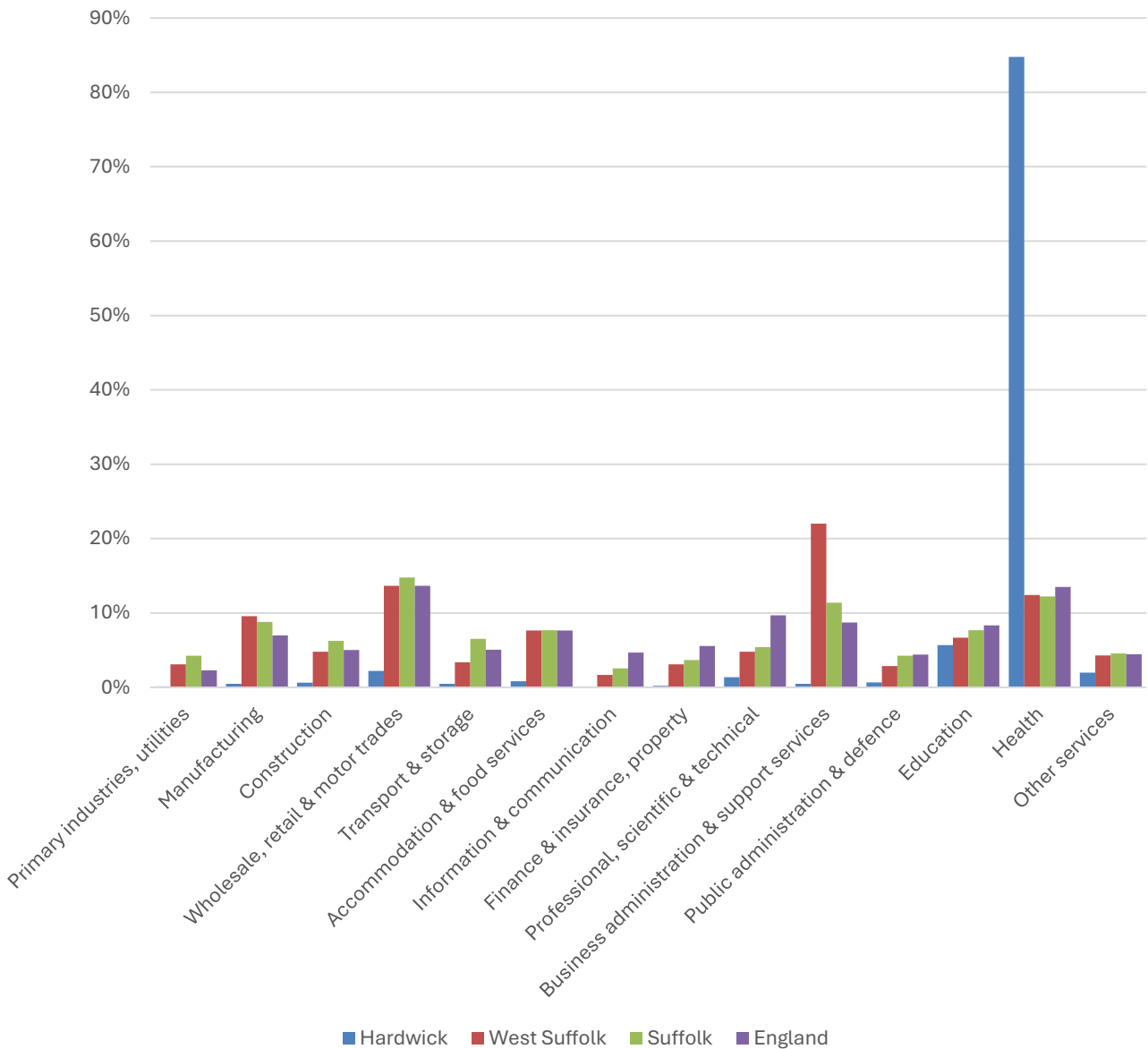


- According to the latest data (2021 Census), 84.8% of the population of Hardwick is White British.
- There were 1,409 (15.2%) residents from minority ethnic groups in the division, 2.5 percentage points larger than the proportion in Suffolk overall, and two thirds of the England figure.
- Hardwick has an unusual ethnic diversity profile. There is a relatively large Asian/Asian British population in the division, but lower proportions of all other ethnic groups.

	All people	White British		Other White		Mixed		Asian and Asian British		Black and Black British		Other Ethnic Group		Total minority ethnic population	
	Count	Count	%	Count	%	Count	%	Count	%	Count	%	Count	%	Count	%
Hardwick	9,263	7,854	84.8	608	6.6	167	1.8	522	5.6	71	0.8	41	0.4	1,409	15.2
West Suffolk	179,948	147,935	82.2	17,221	9.6	4,880	2.7	4,731	2.6	2,873	1.6	2,308	1.3	32,013	17.8
Suffolk	760,687	664,205	87.3	44,066	5.8	17,807	2.3	17,483	2.3	10,168	1.3	6,958	0.9	96,482	12.7
England			73.5		7.5		3.0		9.6		4.2		2.2		26.5

Economy

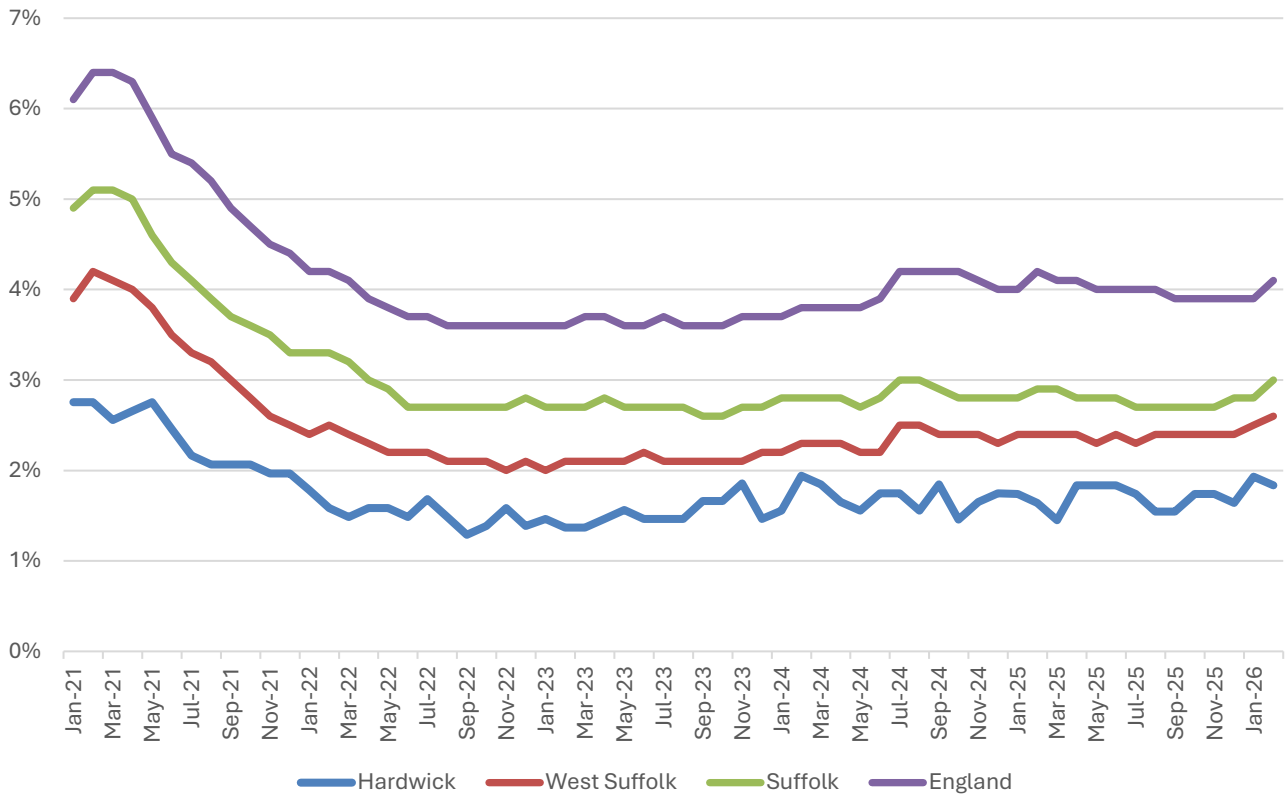
There are around 7,300 people employed in Hardwick.



- Employment in Hardwick is dominated by the health sector due to the presence in the division of West Suffolk Hospital.
- Health services account for 85% of local jobs.
- Education is the next most important sector in the division, providing a further 6% of jobs in Hardwick.

Labour Market

Out-of-work benefit claimant rate



- In February 2026 (the latest available data), 1.8% of 16-64-year-olds were claiming out-of-work benefits in the division.
- In common with West Suffolk, Suffolk and England as a whole, Hardwick saw a steady decline in the proportion of the working age population claiming out-of-work benefits during 2021 and into 2022 following a peak during the COVID-19 pandemic.
- Since then, the claimant rate has been fairly stable at around 1.5-2%.
- The claimant rate in the division is consistently lower than the district, county and national benchmarks.

Schools

School Information

Schools in the Division

Name	Phase	Academy Status	No. pupils	Average cohort size at:			
				Foundation Stage (age 4-7)	KS2 (age 7-11)	KS4 (age 14-16)	KS5 (age 16-18)
Hardwick Primary School	Primary	AC	190	27	38		
Westgate Community Primary School & Nursery	Primary	LA	301	37	43		
Riverwalk School	Special	AC	217	9	18	9	

Academy Status key: AS = Academy Sponsored, AC = Academy Converter, LA = LA Maintained, F = Free

Ofsted information

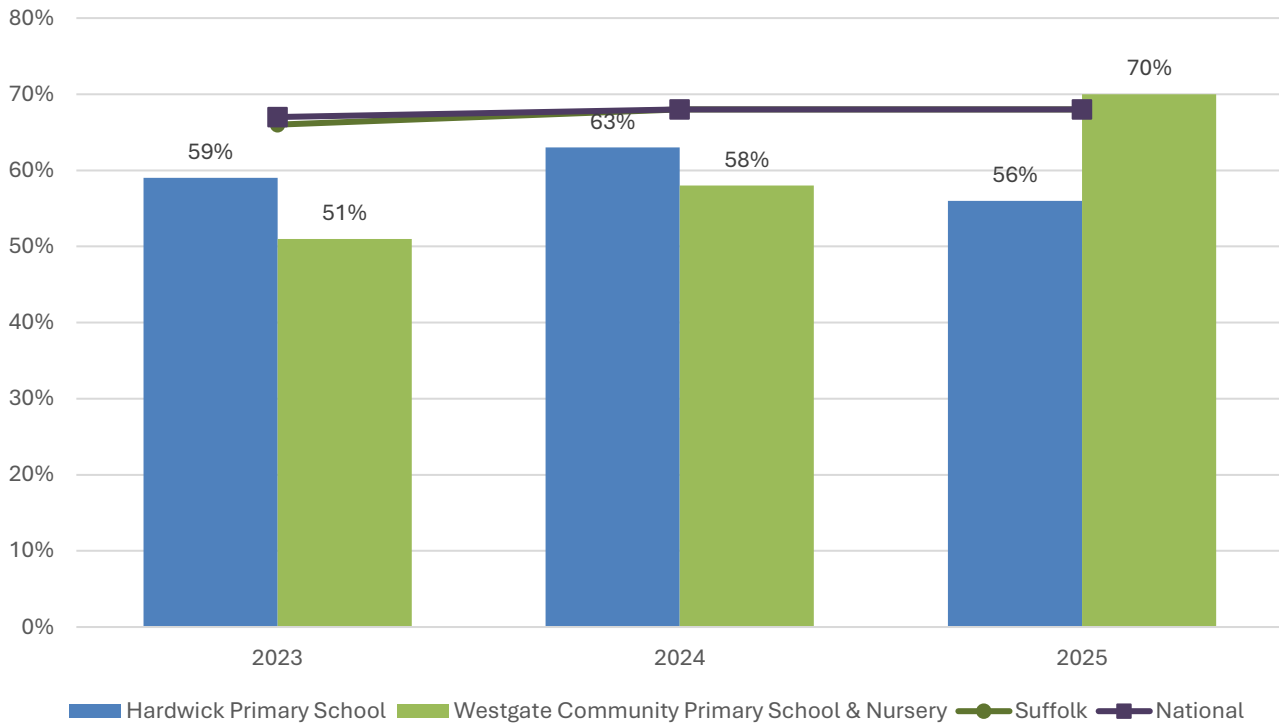
Name	Overall effectiveness	Effectiveness of leadership and management	Behaviour and attitudes	Personal development	Early years provision (if applicable)	Quality of education	Last inspection date
Hardwick Primary School	2	2	9	9	9	9	26/06/2013
Westgate Community Primary School & Nursery	2	2	2	2	2	2	26/01/2022
Riverwalk School	2	2	2	2	2	2	16/07/2024

Code	Judgement	Code	Judgement
0	Insufficient evidence	SM	Special measures
1	Outstanding	8	Does not apply
2	Good	9	No judgement
3	Requires improvement	Null	No data available
4	Inadequate	Not judged	Not judged
SWK	Serious weaknesses	5	No overall grade

School Attainment

Foundation Stage Profile (reception)

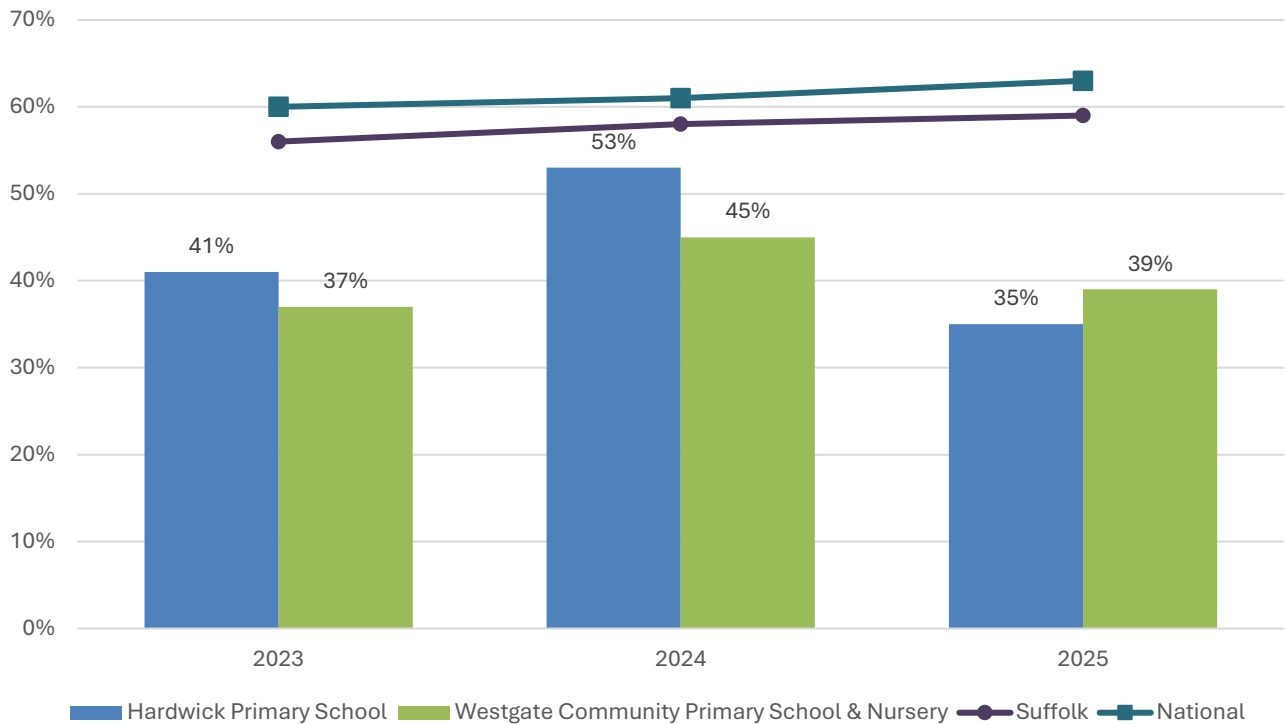
% pupils achieving Good Level of Development (GLD)



- In 2025, the percentage of pupils to achieve a Good Level of Development (GLD) at Foundation Stage (FS) was 56% at Hardwick Primary School, 70% at Westgate Community Primary School and Nursery, and 68% nationally.
- Other than the data for Westgate Community Primary School and Nursery in 2025, Foundation Stage attainment at schools in Hardwick has been below the county and national benchmarks throughout the last three years.

Key Stage 2 (age 11)

% pupils achieving the Expected Level or better in Reading, Writing and Mathematics



- In 2025, the percentage of pupils to achieve the expected level or better in reading, writing and mathematics at Key Stage 2 was 35% at Hardwick Primary School, 39% at Westgate Community Primary School & Nursery and 63% nationally.
- Key stage 2 attainment at schools in Hardwick has been consistently below the county and national figures from 2023 to 2025.

NEET % (Not in Education, Employment or Training)



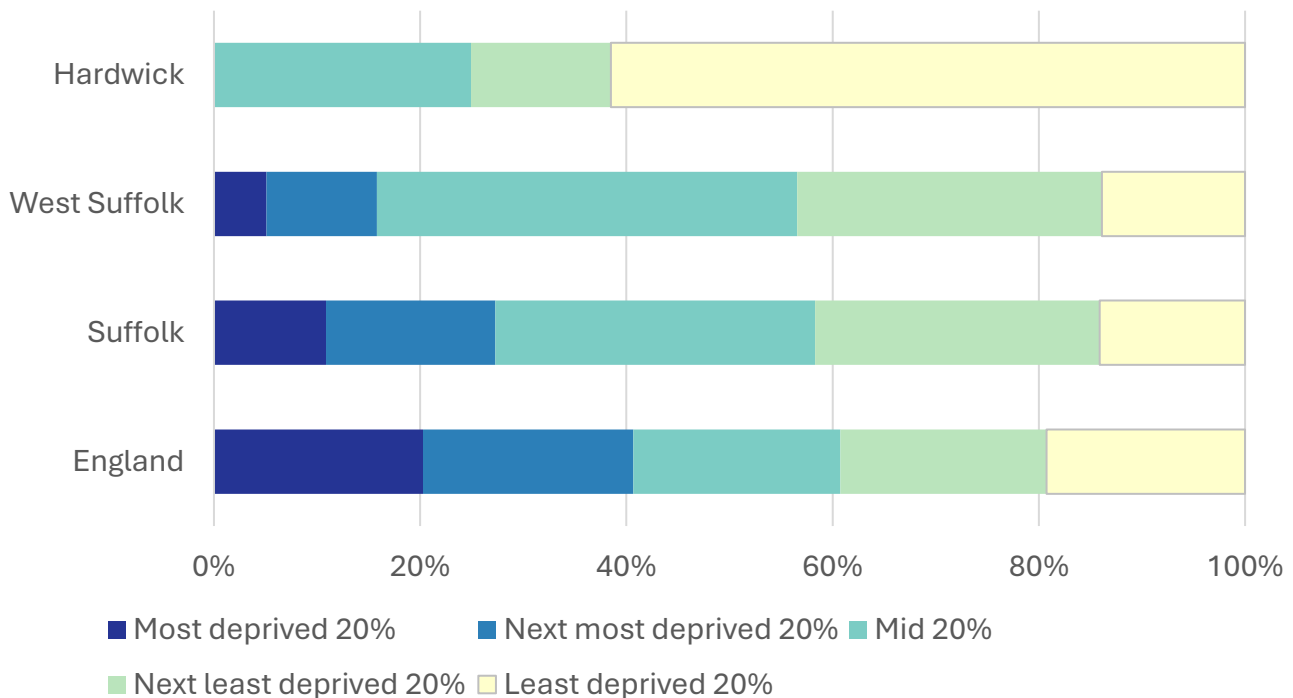
- In February 2026, 2.9% of 16-17-year-olds in Hardwick were classified as NEET (not in education, employment or training).
- NEET levels fluctuate considerably according to the time of year and due to small numbers of 16-17-year-olds in the division, typically being at their lowest at the beginning of a new school year.
- In Hardwick, the proportion of children who are NEET is consistently below the district and county figures.

Index of Multiple Deprivation (IMD) 2025 (see map overleaf)

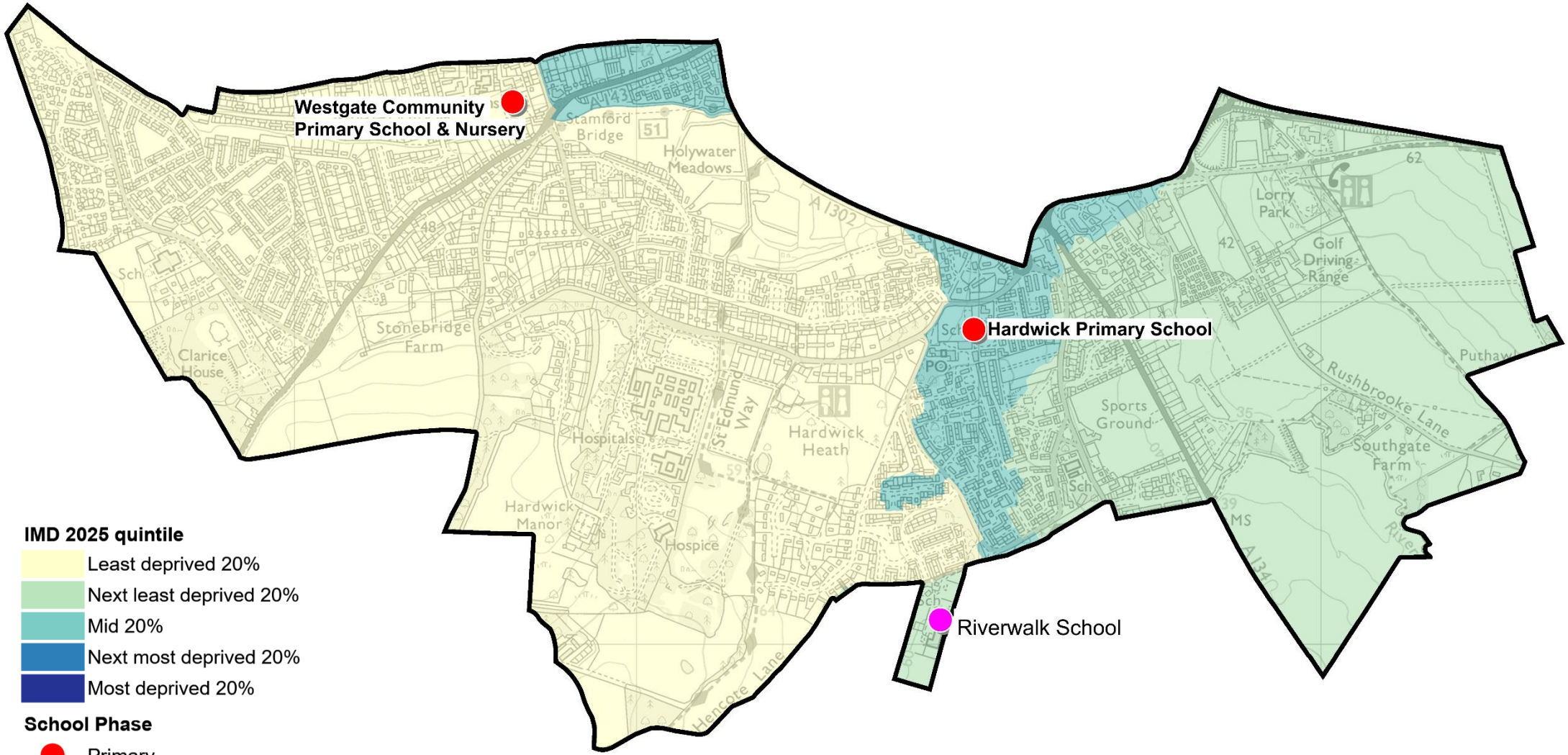
The IMD combines a number of indicators, chosen to cover a range of economic, social and housing issues, into a single deprivation score for each small area in England. This allows each area to be ranked relative to one another according to their level of deprivation. Small areas (Lower Super Output Areas, average population 1,700) are most commonly described as being in 1 of 5 quintile bands. The bottom quintile represents the 20% of areas that are the most deprived in England; these are shaded pale yellow on the map. The top quintile represents the least deprived areas in England and is shaded dark blue.

The Index is widely used to analyse patterns of deprivation, identify areas that would benefit from special initiatives or programmes and as a tool to determine eligibility for specific funding streams.

The chart below shows the percentage of the population of the division that live in areas ranked among each of the five quintiles of deprivation, alongside the district, county and England comparators.



- The 2025 IMD shows that deprivation levels in Hardwick are low to moderate.
- More than two thirds of the population of the division lives in areas that are ranked among the least deprived fifth of places in England.
- A further 14% of Hardwick's population resides in neighbourhoods in the next least deprived quintile, with the remaining quarter in the middle quintile.
- See the map overleaf for the distribution of IMD 2025 results across the division.



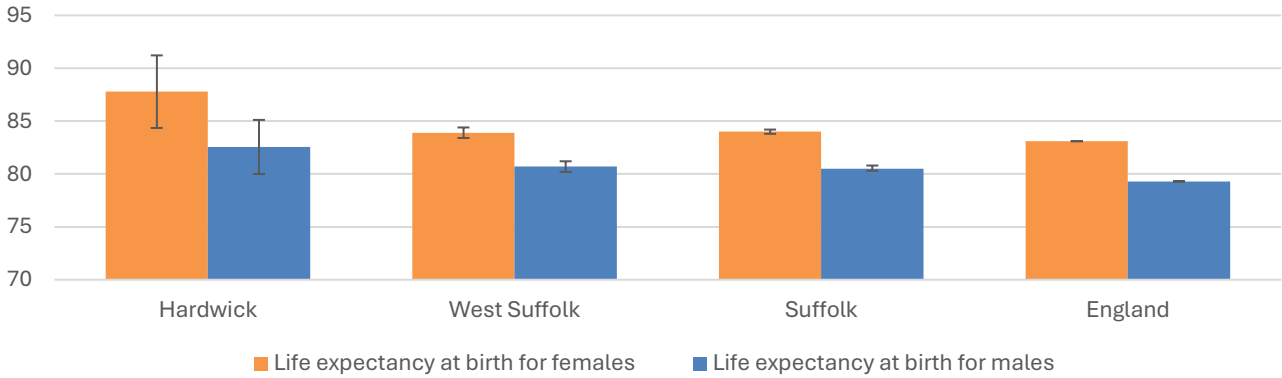
- IMD 2025 quintile**
- Least deprived 20%
 - Next least deprived 20%
 - Mid 20%
 - Next most deprived 20%
 - Most deprived 20%

- School Phase**
- Primary
 - Secondary
 - Special
 - Pupil referral unit/Alternative provision
 - Nursery

Health

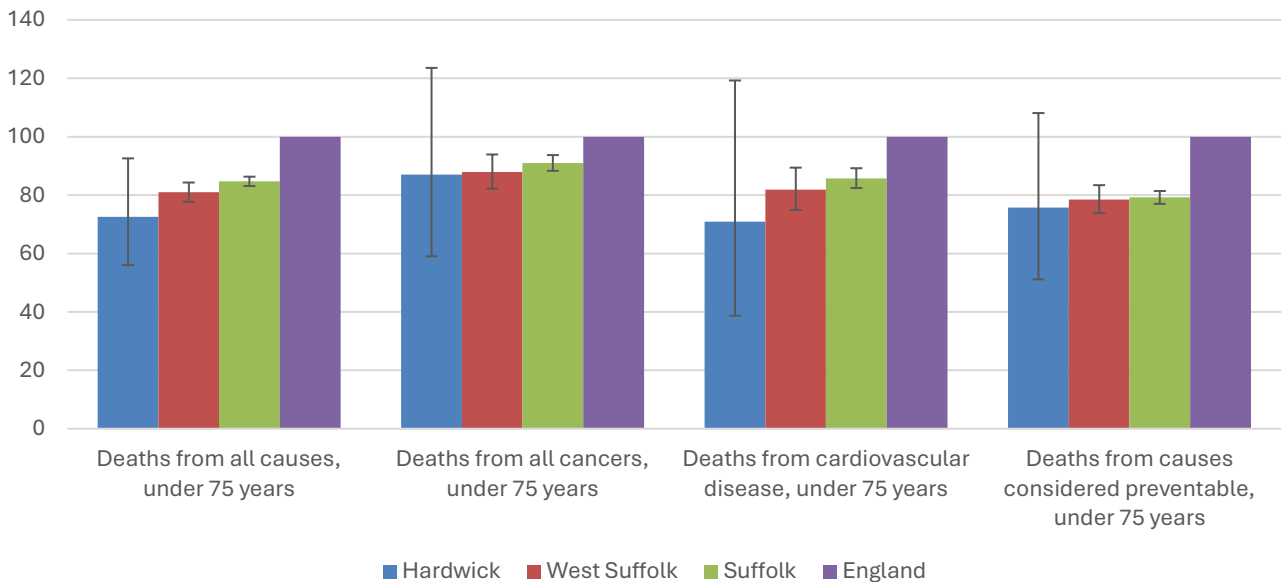
The local data used here is based on relatively small numbers. The confidence limits provide an indication of the reliability of the data. The 95% confidence intervals utilised on the chart provide a range within which there is 95% chance of the true result lying.

Life expectancy at birth



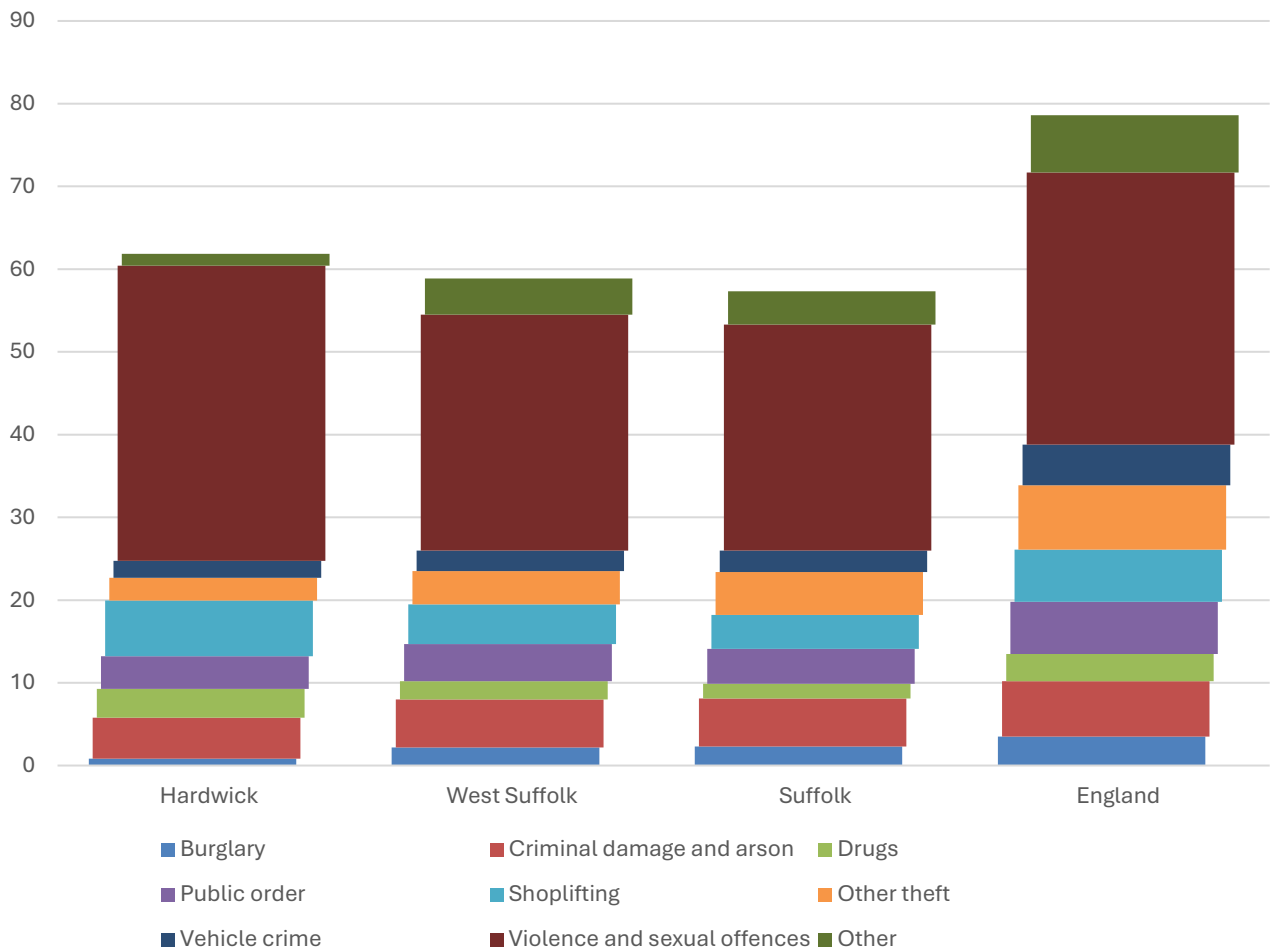
- The latest life expectancy at birth estimates for Hardwick are 87.8 for females (the England figure is 83.1), and 82.6 for males (compared to 79.3 nationally).
- Life expectancy for both males and females in the division are statistically significantly higher than the England figures.

Deaths, under 75 years, standardised mortality ratio



- Estimated standardised mortality ratios for early deaths from all causes, cancers, cardiovascular disease and causes considered preventable in Hardwick are below 100, indicating that deaths in under 75s due to these causes are lower than in England.
- Confidence intervals around these estimates are wide for local data, but the SMR for deaths from all causes is statistically significantly lower in the division than in England.
- The standardised mortality ratio data shown here means that for every 100 early deaths from all causes across England as a whole, there are an estimated 72 comparable deaths in Hardwick.

Crime & Community Safety



- The overall crime rate in Hardwick is just above that for West Suffolk and the county as a whole.
- In the year to the end of January 2026, there were 62 recorded crimes per 1,000 residents in the division, compared to 59 in West Suffolk, and 57 countywide.
- By far the most common type of crime recorded during this period was violence and sexual offences, which accounted for almost 60% of all recorded crimes in the division.

Additional Information

Parishes in Division

Bury St Edmunds (part)

Data sources

Category	Indicator	Source
Demographic Profile	Quinary population table 2024	ONS 2024 mid-year population estimates
	Population pyramid 2024	ONS 2024 mid-year population estimates
	Ethnicity 2021	ONS 2021 Census
Economy	Employment by broad industrial sector 2024	ONS Business Register and Employment Survey via NOMIS
Labour market	Claimant count: The number of people claiming Jobseeker's Allowance plus those who claim Universal Credit who are out of work (% 16-64 population) January 2021-February 2026	DWP via NOMIS
Education	School information and attainment 2023-2025	Suffolk County Council CYP iHub
	% 16-17-year-olds NEET (Not in Employment, Education or Training) March 2021 to February 2026	Suffolk County Council CYP iHub via the Suffolk Observatory
Deprivation	Index of Multiple Deprivation 2025	Ministry of Housing, Communities and Local Government
Health	Life expectancy at birth 2016-2020 (2018-2020 for comparator areas)	Office for Health Improvement and Disparities
Health	Standardised mortality ratio for deaths from all causes, cancer, cardiovascular disease, and from causes considered preventable (under 75 years), 2016-2020 (2019-2023 for comparator areas). The standardised mortality ratio is the ratio of observed deaths in the study group to expected deaths in the general population	Office for Health Improvement and Disparities
Community Safety	Recorded crime rate per 1,000 resident population February 2025 to January 2026	Data.police.uk via the Suffolk Observatory

For more data and information about Hardwick Electoral Division, see the Suffolk Observatory www.suffolkobservatory.info

