

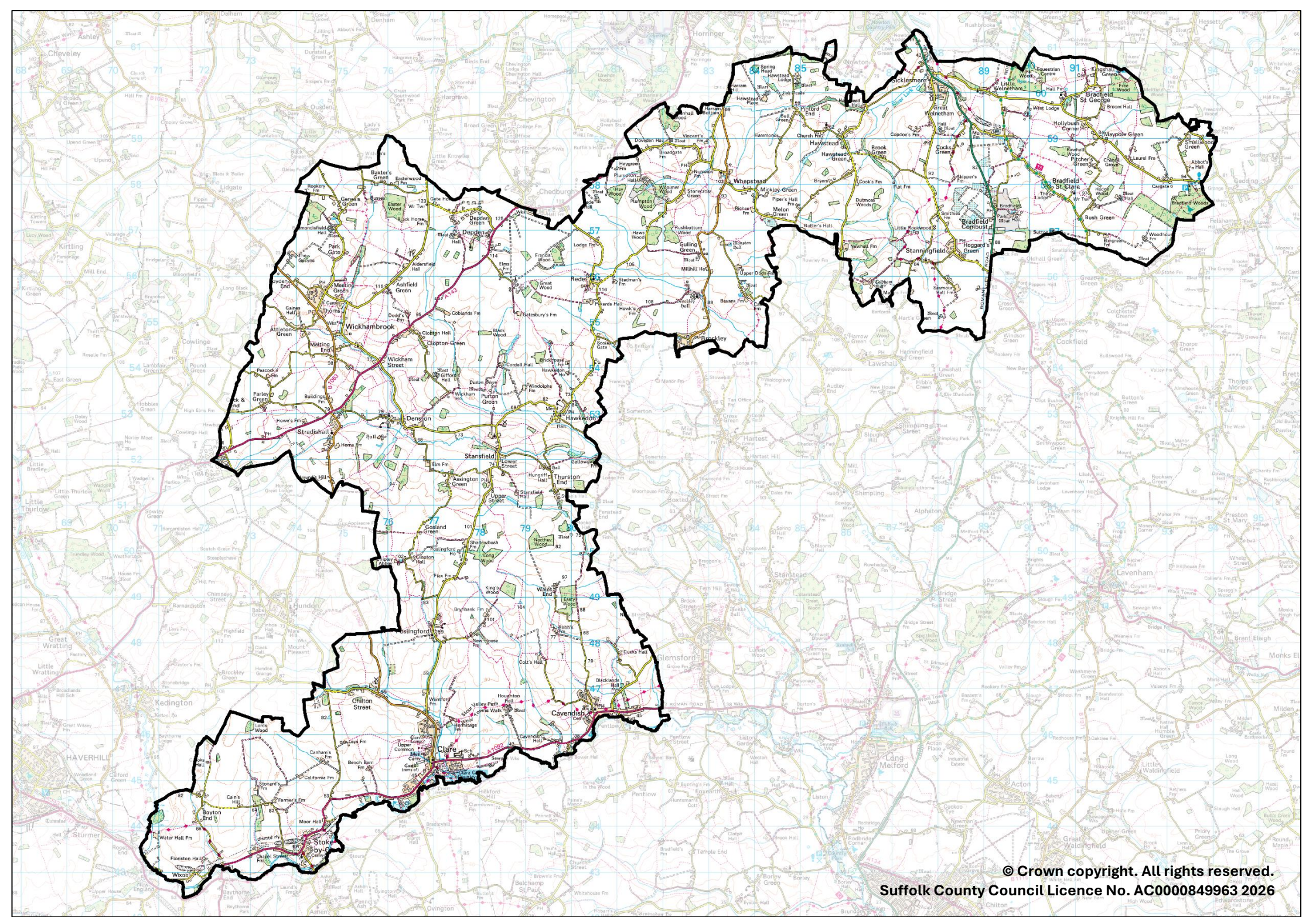
# Clare

County Electoral Division profile

May 2026

This division comprises Wepstead & Wickhambrook Ward in its entirety, and parts of Chedburgh & Chevington, Clare, Hundon & Kedington, Horringer, and Rougham Wards





© Crown copyright. All rights reserved.

Suffolk County Council Licence No. AC000849963 2026

# Contents

- Demographic Profile: Age & Ethnicity
- Economy and Labour Market
- Schools & NEET
- Index of Multiple Deprivation
- Health
- Crime & Community Safety
- Additional Information
- Data Sources

# Electoral Division Profiles: an introduction

These profiles have been produced to support elected members, constituents and other interested parties in understanding the demographic, economic, social and educational profile of their neighbourhoods. We have used the latest data available at the time of publication.

Much more data is available from national and local sources than is captured here, but it is hoped that the profile will be a useful starting point for discussion, where local knowledge and experience can be used to flesh out and illuminate the information presented here.

The profile can be used to help look at some fundamental questions e.g.

- Does the age profile of the population match or differ from the national profile?
- Is there evidence of the ageing profile of the county in all the wards in the Division or just some?
- How diverse is the community in terms of ethnicity?
- What is the impact of deprivation on families and residents?
- Does there seem to be a link between deprivation and school performance?
- What is the breakdown of employment sectors in the area?
- Is it a relatively healthy area compared to the rest of the district or county?
- What sort of crime is prevalent in the community?

A vast amount of additional data is available on the **Suffolk Observatory**

[www.suffolkobservatory.info](http://www.suffolkobservatory.info)

The Suffolk Observatory is a free online resource that contains all Suffolk's vital statistics; it is the one-stop-shop for information and intelligence about Suffolk. Through data, reports and maps, the Suffolk Observatory provides a comprehensive picture of the County. It is a great source for useful facts and figures that can be used for writing reports and presentations, informing strategic and business planning, preparing funding applications or supporting academic research. Data is presented around the key themes of population, children and young people, health and social care, housing, crime and community safety, deprivation, economy and employment and environment. All areas of the county are covered, right down to district, electoral division, ward and parish level, with information easily accessible in a variety of formats. You can also build your own reports for custom areas.

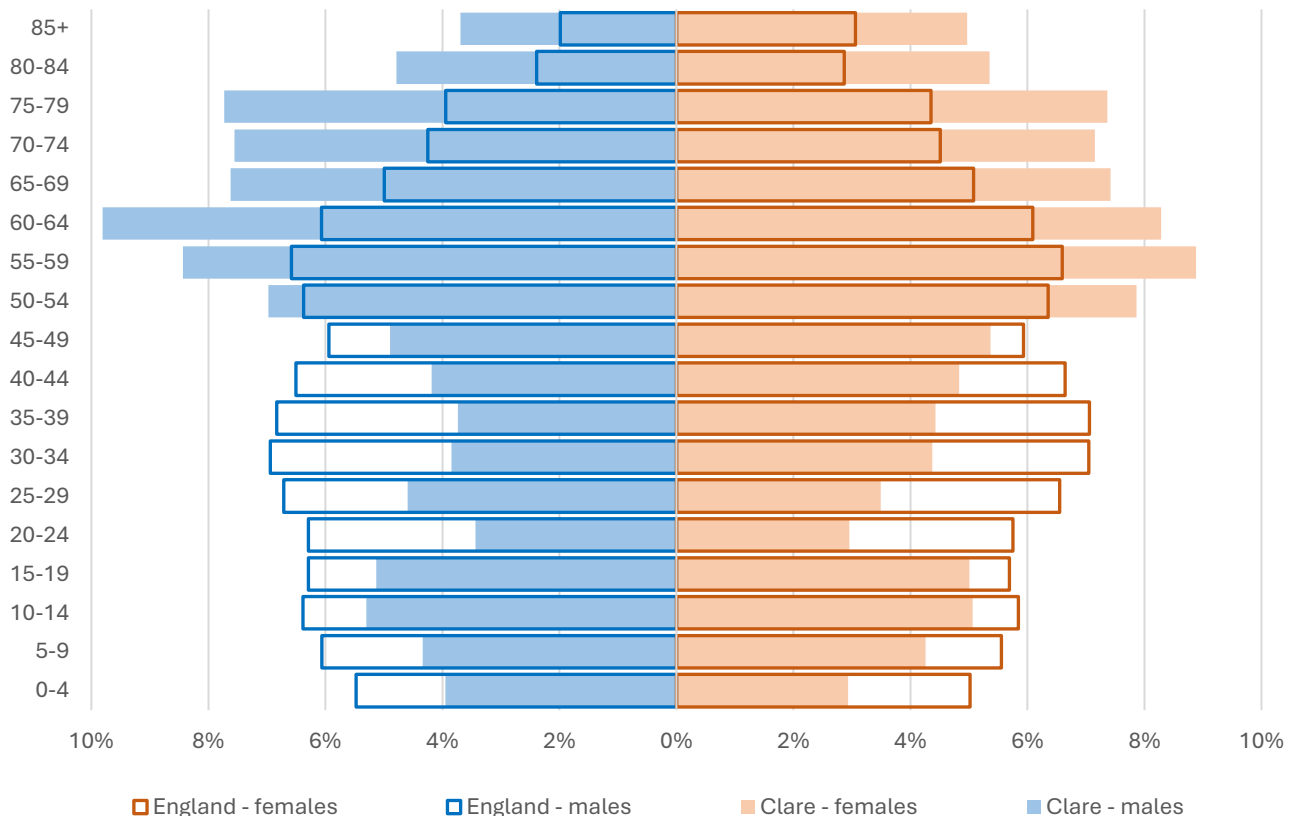
## Technical Notes:

1. Where electoral divisions do not exactly match the boundaries at which the data is available (e.g. ward, Output Area or Lower Super Output Area), we have adopted a "best-fit" approach to produce a dataset.
2. District, county and national level data is provided where possible to provide a context for comparisons.

# Demographic Profile - Age

In mid-2024, the estimated population of Clare stood at 9,873, an increase of 2.1% over the past decade. The age structure of the component wards and the division as a whole is set out below.

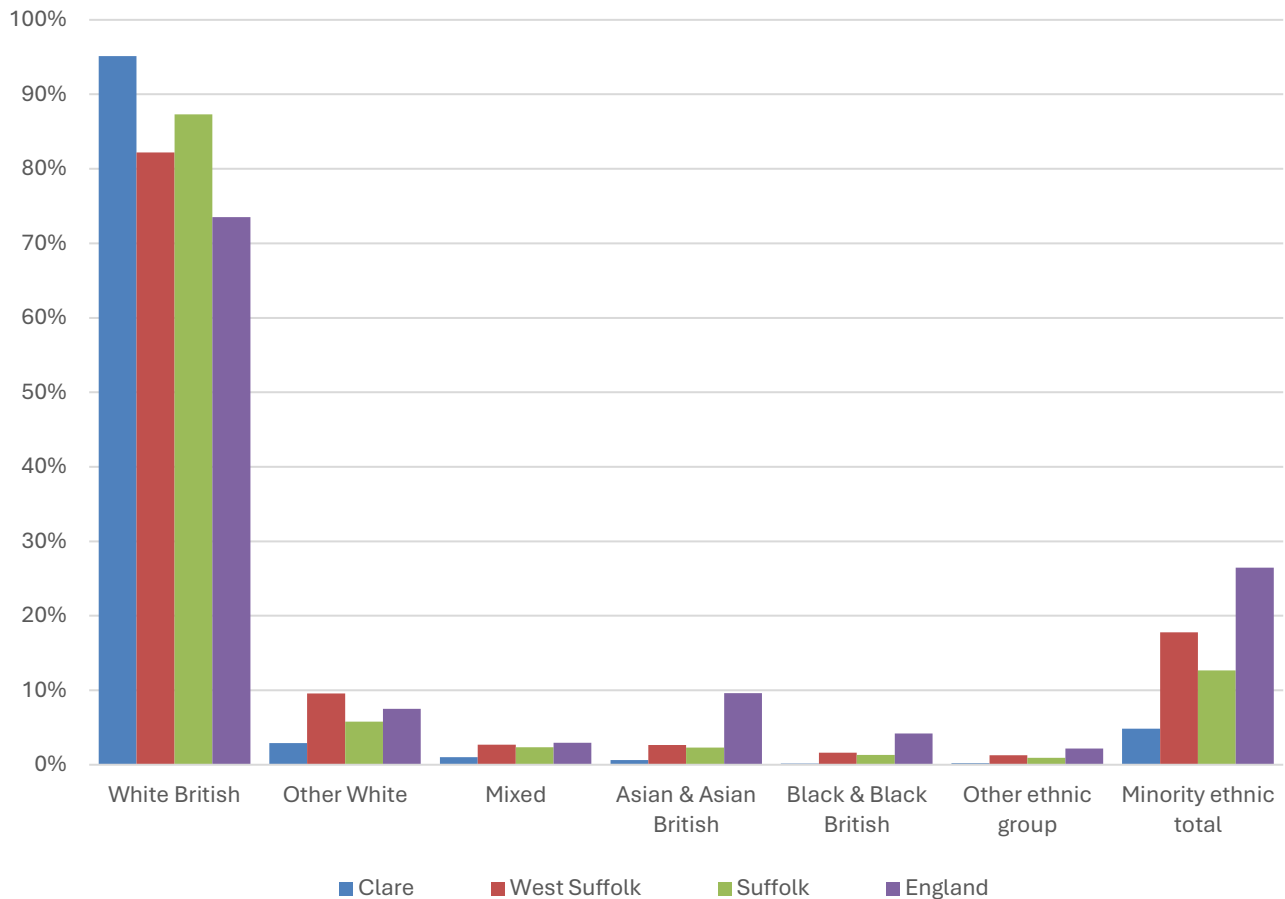
	Clare Division	Clare, Hundon & Kedington Ward	Whepstead & Wickhambrook Ward	Horringer Ward	Rougham Ward	Chedburgh & Chevington Ward
<b>All Ages</b>	<b>9,873</b>	4,384	2,560	1,458	1,150	321
<b>0-4</b>	<b>337</b>	143	81	62	44	7
<b>5-9</b>	<b>424</b>	191	100	66	55	12
<b>10-14</b>	<b>511</b>	221	123	89	65	13
<b>15-19</b>	<b>500</b>	227	118	82	57	16
<b>20-24</b>	<b>314</b>	104	90	64	50	6
<b>25-29</b>	<b>396</b>	165	79	89	48	15
<b>30-34</b>	<b>407</b>	165	100	88	42	12
<b>35-39</b>	<b>405</b>	155	95	75	60	20
<b>40-44</b>	<b>447</b>	193	122	65	57	10
<b>45-49</b>	<b>508</b>	218	141	85	50	14
<b>50-54</b>	<b>735</b>	371	179	100	66	19
<b>55-59</b>	<b>856</b>	358	217	147	102	32
<b>60-64</b>	<b>889</b>	378	280	96	89	46
<b>65-69</b>	<b>742</b>	340	206	89	76	31
<b>70-74</b>	<b>725</b>	323	198	93	84	27
<b>75-79</b>	<b>744</b>	343	208	88	88	17
<b>80-84</b>	<b>502</b>	269	122	51	50	10
<b>85+</b>	<b>431</b>	220	101	29	67	14



The age pyramid for Clare division shows a considerably higher proportion of people aged 50 and over than seen in England as a whole.

- Almost a third (31.8%) of the population of Clare is of retirement age. The England figure is 18.7%.
- The most common age group in the division is 60-64-year-olds (9% of the local population), followed by 55-59-year-olds (8.7%), and 75-79-year-olds (7.5%).
- There is a particularly low proportion of children and young people and younger adults in the division.

# Demographic Profile - Ethnicity

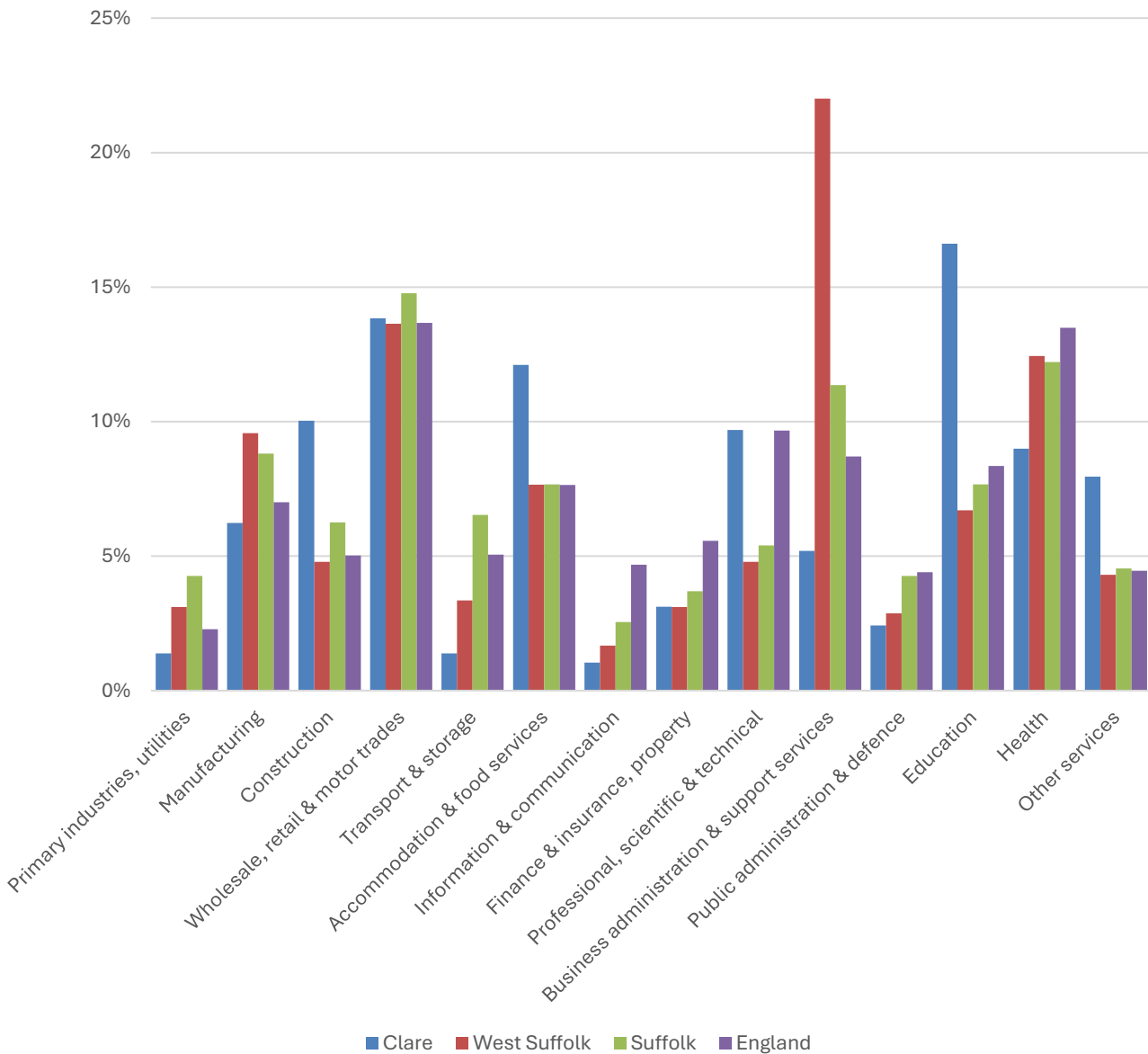


- According to the latest data (2021 Census), 95.1% of the population of Clare is White British.
- There were 481 (4.9%) residents from minority ethnic groups in the division, around a third of the proportion in Suffolk overall, and a fifth of the England average.
- Clare has much lower proportions of all minority ethnic groups living in the division than West Suffolk as a whole.

	All people	White British		Other White		Mixed		Asian and Asian British		Black and Black British		Other Ethnic Group		Total minority ethnic population	
	Count	Count	%	Count	%	Count	%	Count	%	Count	%	Count	%	Count	%
Clare	9,906	9,425	95.1	287	2.9	99	1.0	62	0.6	14	0.1	19	0.2	481	4.9
West Suffolk	179,948	147,935	82.2	17,221	9.6	4,880	2.7	4,731	2.6	2,873	1.6	2,308	1.3	32,013	17.8
Suffolk	760,687	664,205	87.3	44,066	5.8	17,807	2.3	17,483	2.3	10,168	1.3	6,958	0.9	96,482	12.7
England			73.5		7.5		3.0		9.6		4.2		2.2		26.5

# Economy

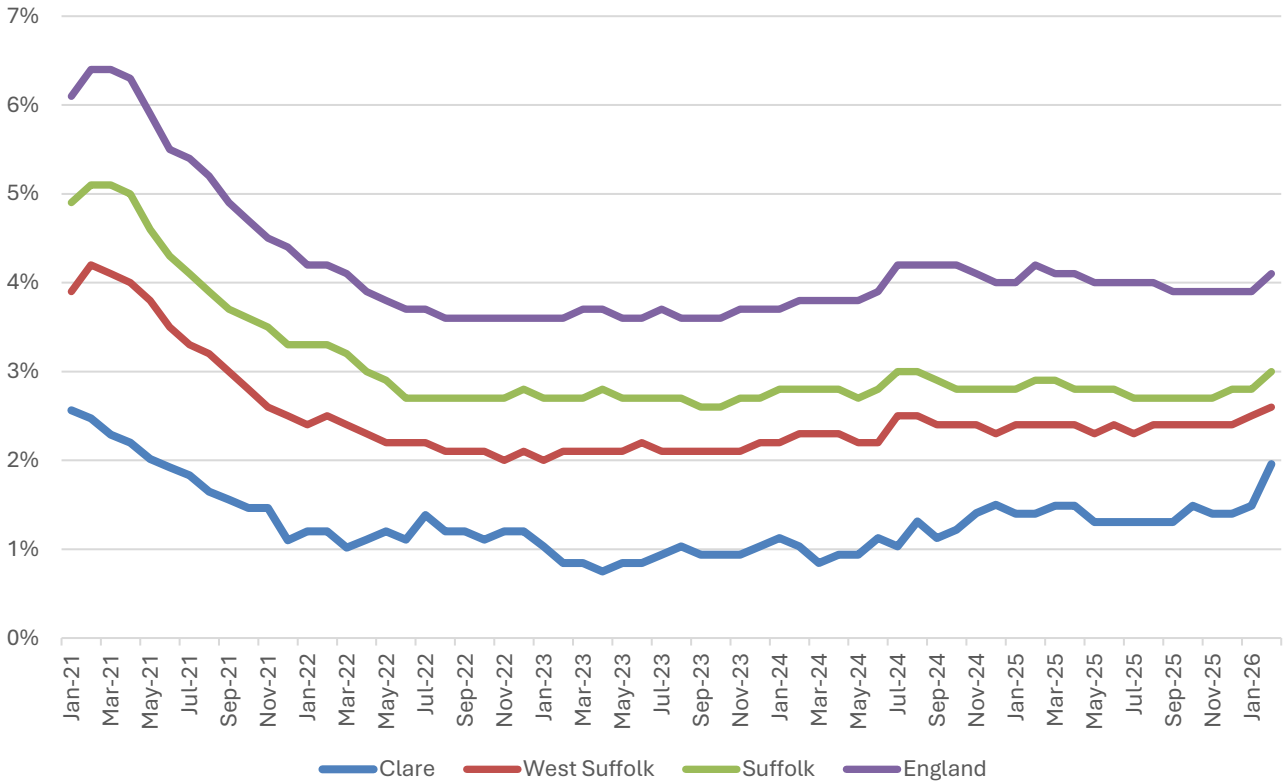
There are around 1,400 people employed in Clare.



- Education (16.6% of local jobs), wholesale, retail and motor trades (13.8%), and accommodation and food services (12.1%) are the three largest sectors in Clare in terms of employment.
- Education and accommodation and food services account for a much larger proportion of employment in Clare than they do in West Suffolk, Suffolk or England.
- Construction, professional, scientific and technical activities, and other services are also locally important. The other services sector primarily includes creative and cultural industries, and gambling, betting and sports activities.

# Labour Market

## Out-of-work benefit claimant rate



- In February 2026 (the latest available data), 2% of 16-64-year-olds were claiming out-of-work benefits in the division.
- In common with West Suffolk, Suffolk and England as a whole, Clare saw a steady decline in the proportion of the working age population claiming out-of-work benefits during 2021 and into 2022 following a peak during the COVID-19 pandemic.
- Since then, the claimant rate has been fairly stable at around 1-1.5%, though there are signs of an increase in recent months.
- The claimant rate in the division is consistently lower than the district, county and national benchmarks.

# Schools

## School Information

### Schools in the Division

Name	Phase	Academy Status	No. pupils	Average cohort size at:			
				Foundation Stage (age 4-7)	KS2 (age 7-11)	KS4 (age 14-16)	KS5 (age 16-18)
Cavendish CofE Primary School	Primary	AS	52	8	12		
Clare Community Primary School	Primary	AS	199	27	31		
Great Whelnetham Church of England Primary School	Primary	AS	74	9	12		
Wickhambrook Primary Academy	Primary	AC	180	26	24		
Stour Valley Community School	Secondary	F	569			115	

Academy Status key: AS = Academy Sponsored, AC = Academy Converter, LA = LA Maintained, F = Free

### Ofsted information

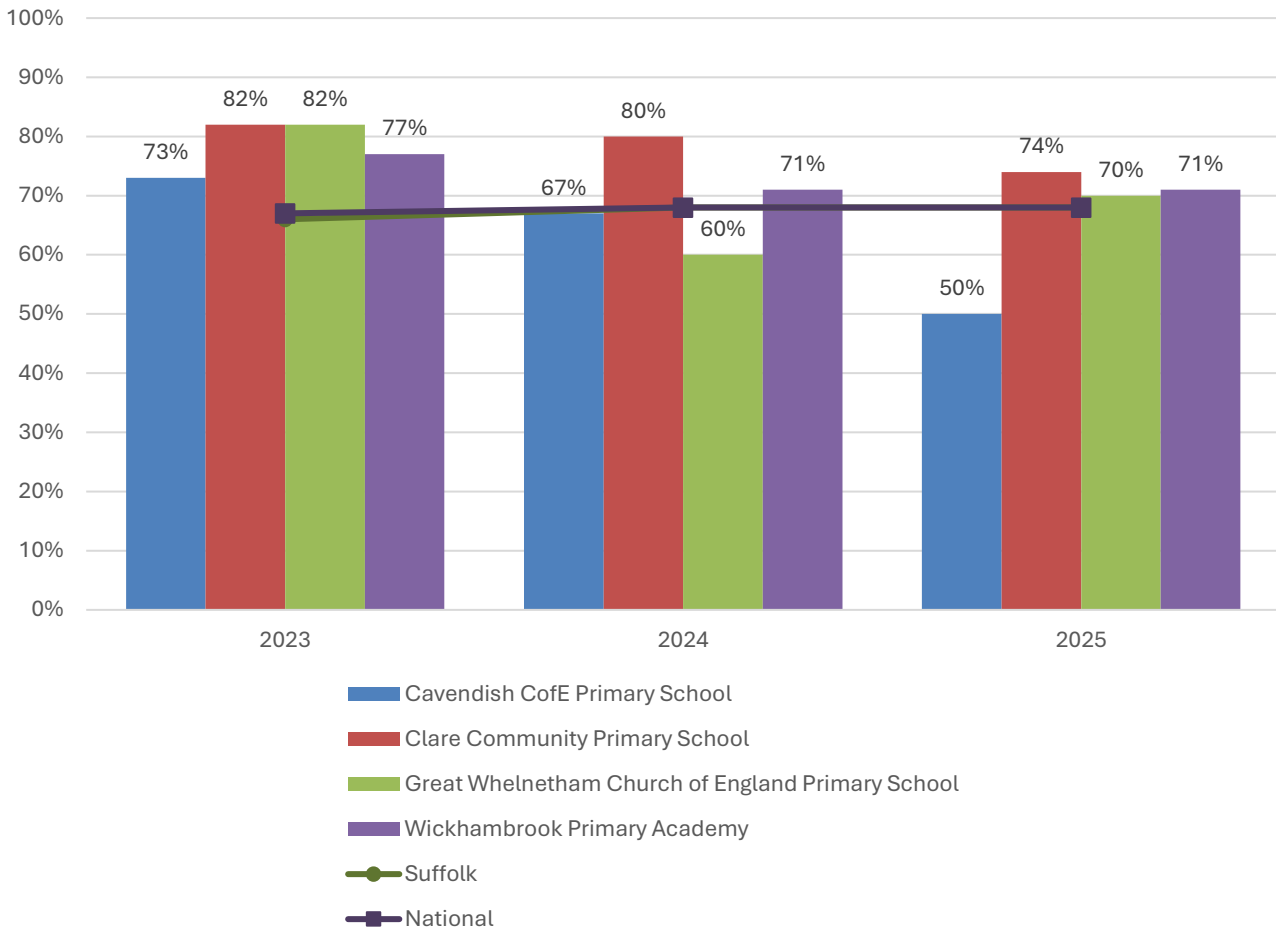
Name	Overall effectiveness	Effectiveness of leadership and	Behaviour and attitudes	Personal development	Early years provision (if applicable)	Quality of education	Last inspection date
Cavendish CofE Primary School	4	4	3	4	4	4	17/04/2024
Clare Community Primary School	2	2	2	2	2	2	13/02/2020
Great Whelnetham Church of England Primary School	2	2	2	2	2	2	11/10/2023
Wickhambrook Primary Academy	5	1	2	1	1	2	24/09/2024
Stour Valley Community School	2	2	2	2	9	2	25/04/2023

Code	Judgement	Code	Judgement
0	Insufficient evidence	SM	Special measures
1	Outstanding	8	Does not apply
2	Good	9	No judgement
3	Requires improvement	Null	No data available
4	Inadequate	Not judged	Not judged
SWK	Serious weaknesses	5	No overall grade

# School Attainment

## Foundation Stage Profile (reception)

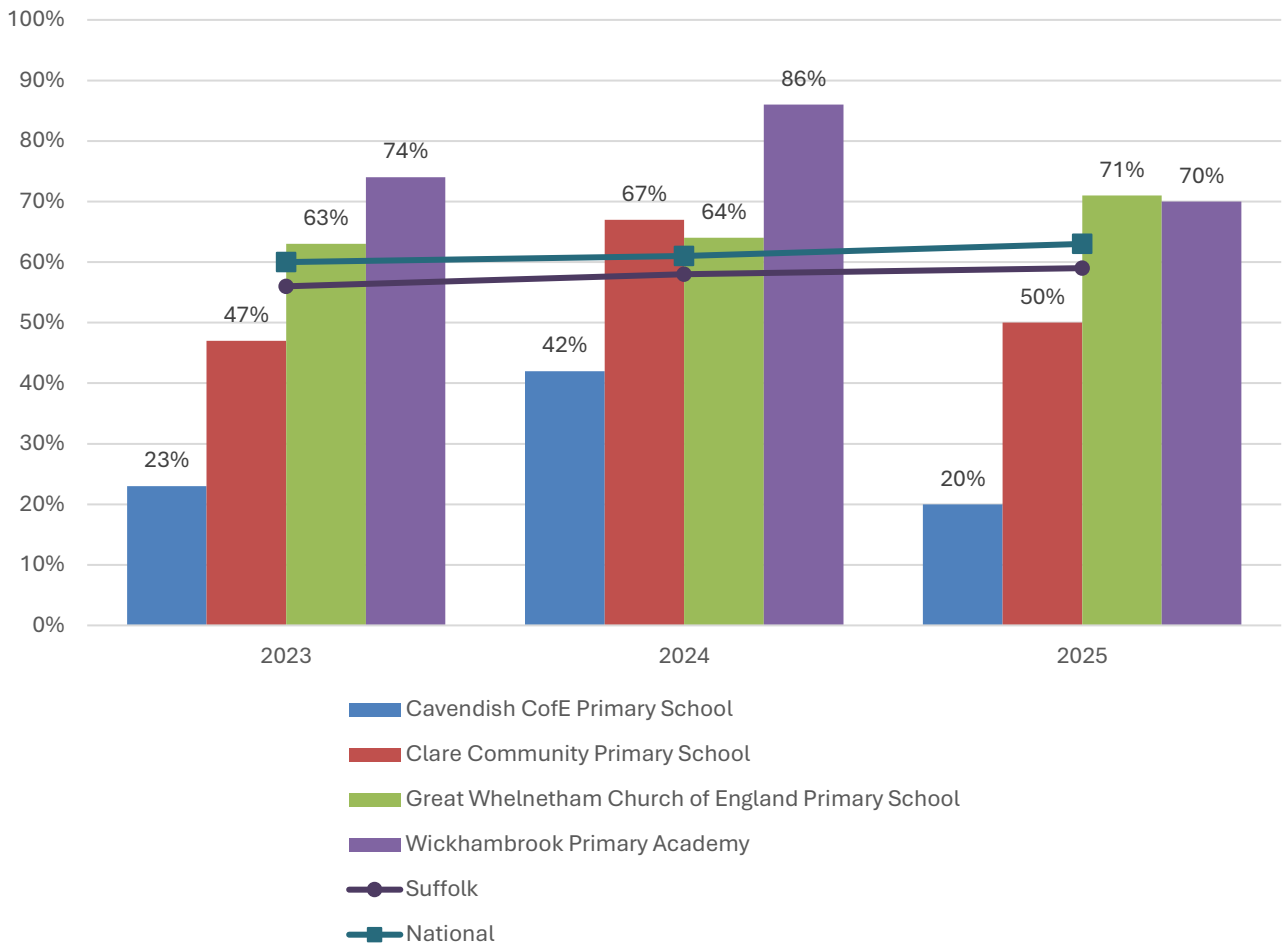
% pupils achieving Good Level of Development (GLD)



- In 2025, the percentage of pupils to achieve a Good Level of Development (GLD) at Foundation Stage (FS) was 50% at Cavendish Church of England Primary School, 74% at Clare Community Primary School, 70% at Great Whelnetham Church of England Primary School, 71% at Wickhambrook Primary Academy, and 68% nationally.
- Foundation Stage attainment at Clare Community Primary School and Wickhambrook Primary Academy has been above the Suffolk and national average in each of the last three years.
- Attainment at Cavendish Church of England Primary School has declined during this period, and was a single percentage point below the national benchmark in 2024, and 18 below it in 2025.
- Great Whelnetham Church of England Primary School also saw FS attainment levels above the England figure in 2023 and 2025.
- FS attainment in Clare has been largely consistent despite small cohort sizes at Cavendish and Great Whelnetham Church of England Primary Schools in particular.

## Key Stage 2 (age 11)

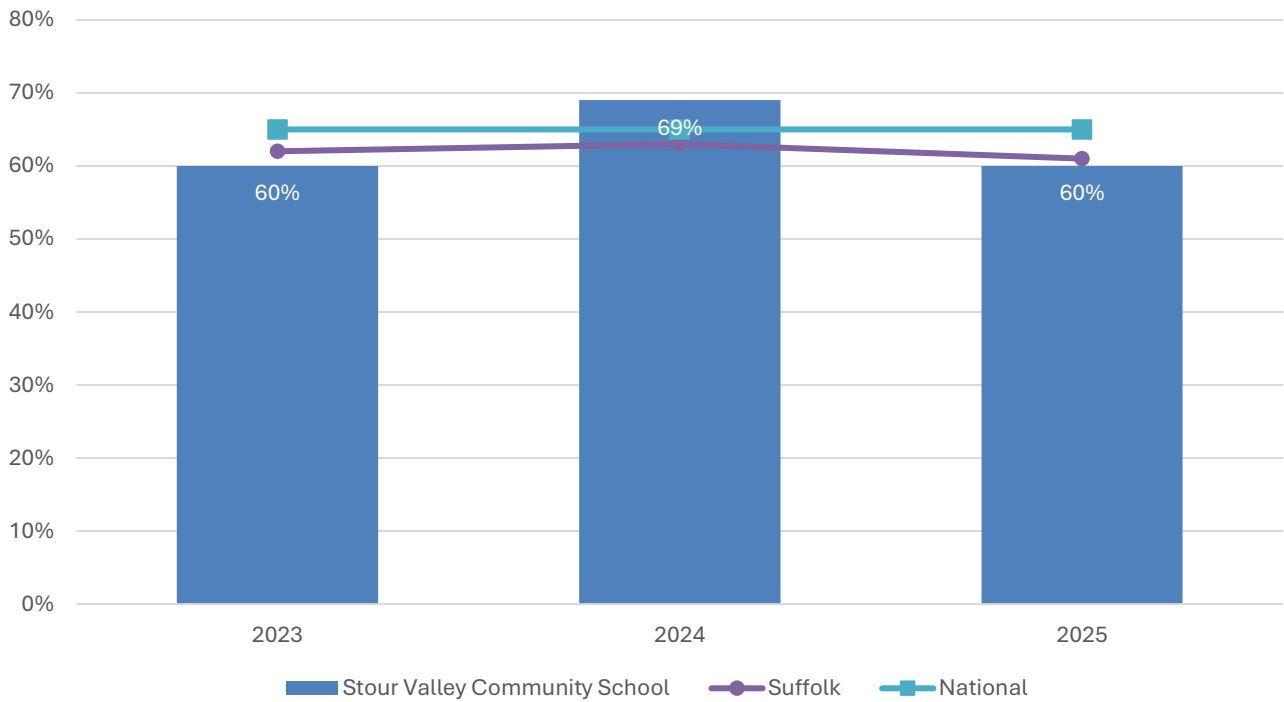
% pupils achieving the Expected Level or better in Reading, Writing and Mathematics



- In 2025, the percentage of pupils to achieve the expected level or better in reading, writing and mathematics at Key Stage 2 was 20% at Cavendish Church of England Primary School, 50% at Clare Community Primary School, 71% at Great Whelnetham Church of England Primary School, 70% at Wickhambrook Primary Academy, and 63% nationally.
- Key stage 2 attainment at Great Whelnetham Church of England Primary School and Wickhambrook Primary Academy has been consistently above the county and national figures over the past three years of data.
- KS2 attainment at Cavendish Church of England Primary School has been below average throughout this period.

### Key Stage 4 (GCSE) (age 16)

% pupils achieving level 4-9 in English and Mathematics



- Key Stage 4 attainment at Stour Valley Community School has been largely consistent over the last three years, but the percentage of pupils achieving level 4-9 in English and mathematics at the school was five percentage points below the national benchmark in 2023 and 2025.
- In 2024, however, KS4 attainment at the school was four percentage points higher than the England figure.

## NEET % (Not in Education, Employment or Training)



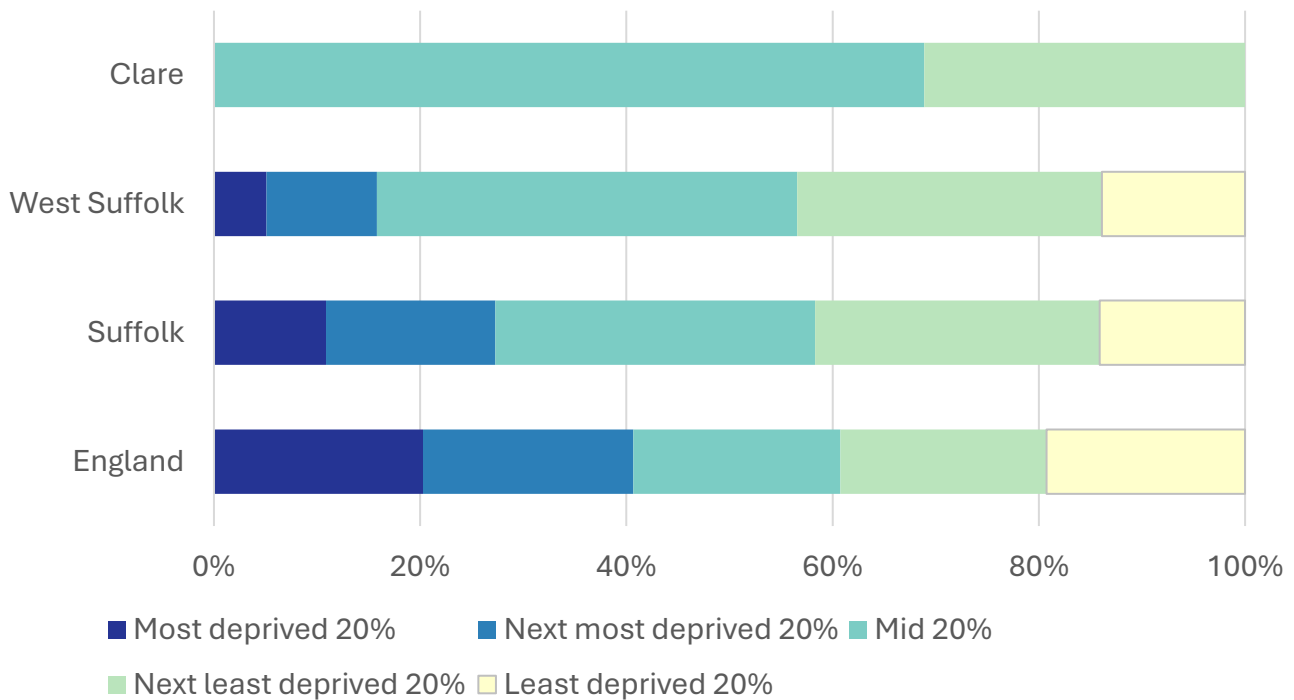
- In February 2026, 5.3% of 16-17-year-olds in Clare were classified as NEET (not in education, employment or training).
- NEET levels fluctuate considerably according to the time of year and due to small numbers of 16-17-year-olds in the division, typically being at their lowest at the beginning of a new school year.
- In Clare, the proportion of children who are NEET is generally below the district and county figures, though NEET levels in the division have increased in recent months.

## Index of Multiple Deprivation (IMD) 2025 (see map overleaf)

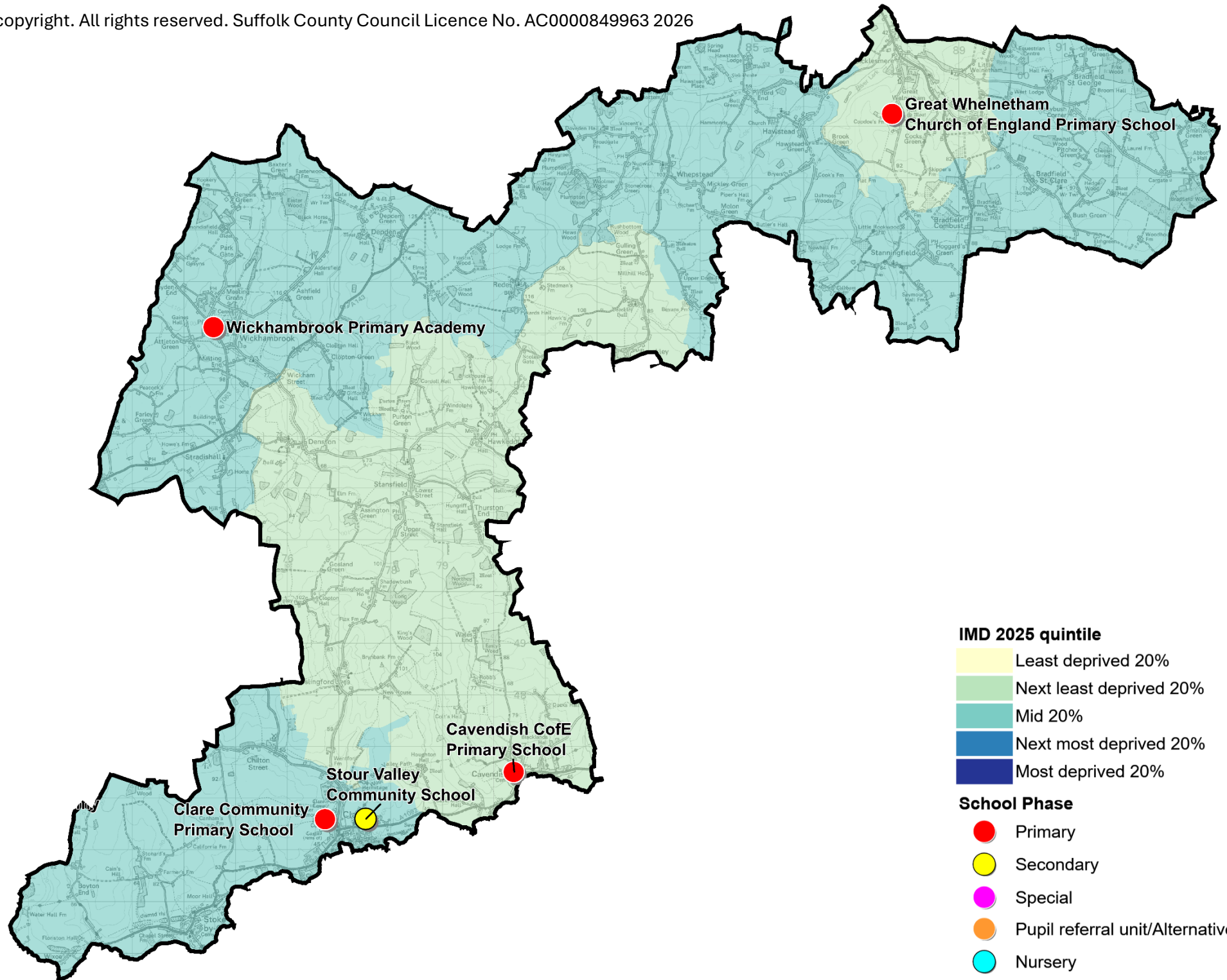
The IMD combines a number of indicators, chosen to cover a range of economic, social and housing issues, into a single deprivation score for each small area in England. This allows each area to be ranked relative to one another according to their level of deprivation. Small areas (Lower Super Output Areas, average population 1,700) are most commonly described as being in 1 of 5 quintile bands. The bottom quintile represents the 20% of areas that are the most deprived in England; these are shaded pale yellow on the map. The top quintile represents the least deprived areas in England and is shaded dark blue.

The Index is widely used to analyse patterns of deprivation, identify areas that would benefit from special initiatives or programmes and as a tool to determine eligibility for specific funding streams.

The chart below shows the percentage of the population of the division that live in areas ranked among each of the five quintiles of deprivation, alongside the district, county and England comparators.



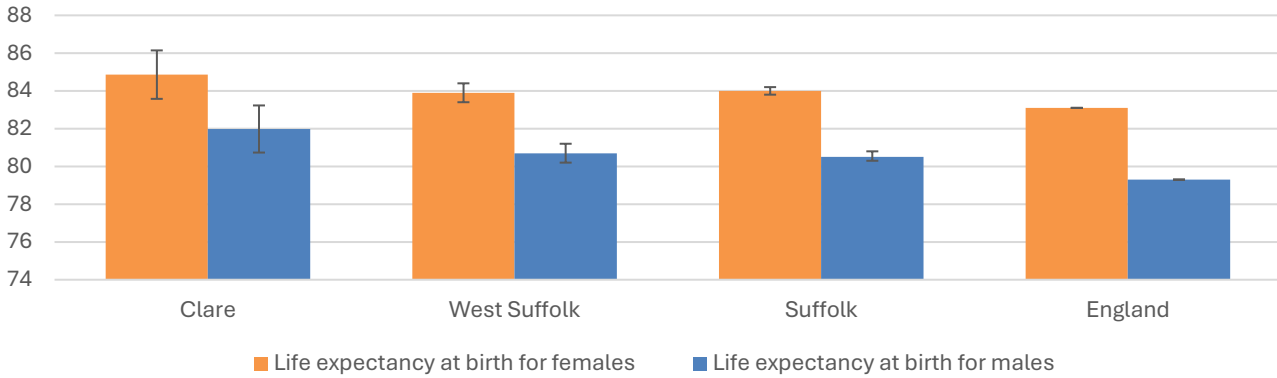
- The 2025 IMD shows that deprivation levels in Blackbourn are moderate to low.
- Just over two thirds of the population of the division live in areas that are ranked in the middle quintile of deprivation in England.
- The remaining 31% is in the next least deprived quintile (i.e. 20-40% least deprived).
- See the map overleaf for the distribution of IMD 2025 results across the division.



# Health

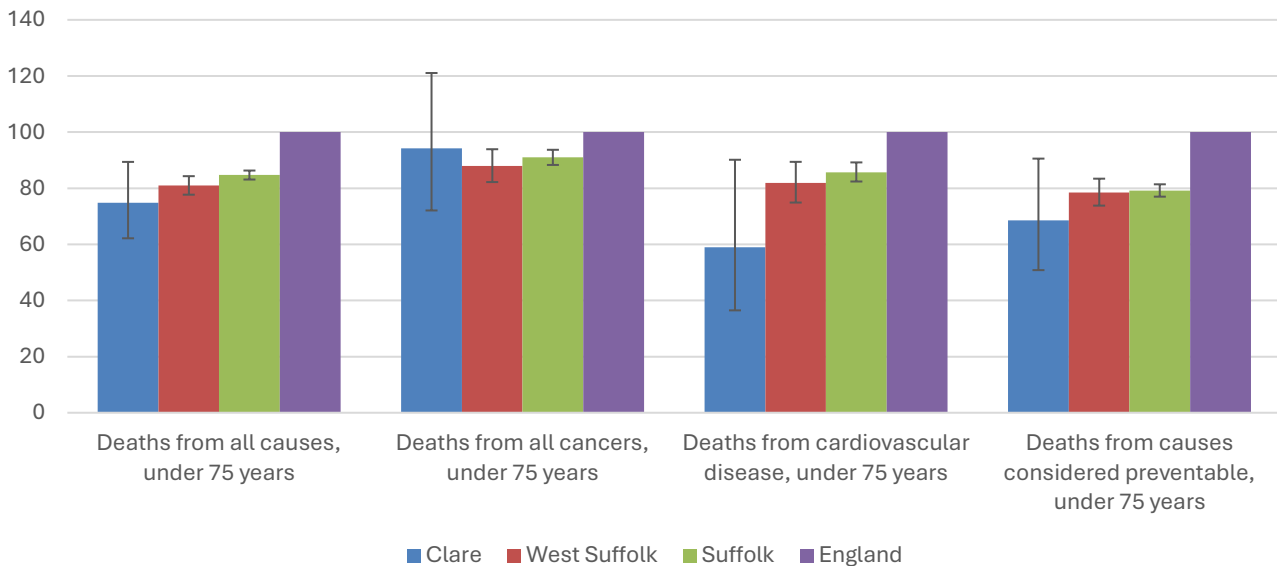
The local data used here is based on relatively small numbers. The confidence limits provide an indication of the reliability of the data. The 95% confidence intervals utilised on the chart provide a range within which there is 95% chance of the true result lying.

## Life expectancy at birth



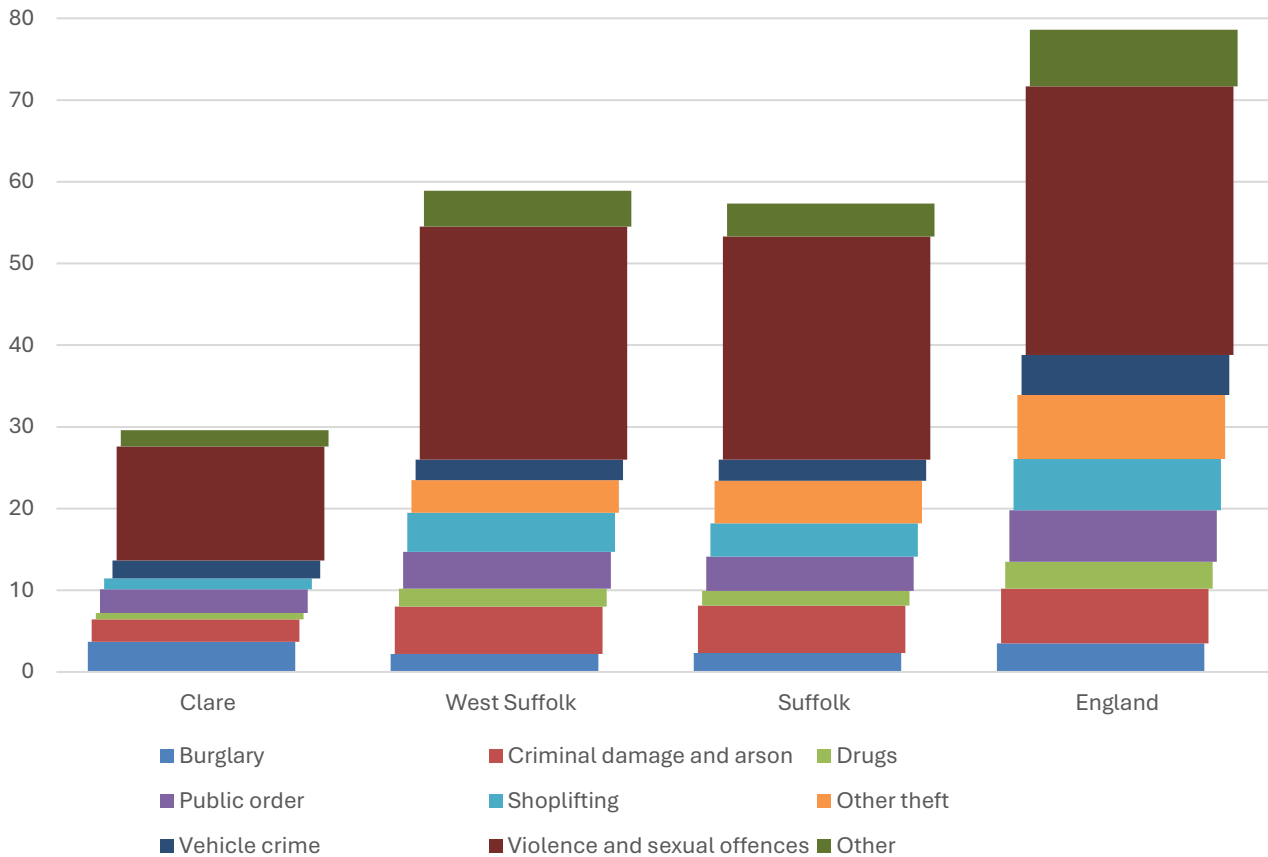
- The latest life expectancy at birth estimates for Clare are 84.9 for females (the England figure is 83.1), and 82 for males (compared to 79.3 nationally).
- Life expectancy for both males and females in the division are statistically significantly higher than the England figures.

## Deaths, under 75 years, standardised mortality ratio



- Estimated standardised mortality ratios for early deaths from all causes, cancers, cardiovascular disease and causes considered preventable in Clare are below 100, indicating that deaths in under 75s due to these causes are lower than in England.
- Confidence intervals around these estimates are wide for local data, but the SMRs for deaths from all causes, cardiovascular disease and from causes considered preventable are statistically significantly lower in the division than in England.
- The standardised mortality ratio data shown here means that for every 100 early deaths from all causes across England as a whole, there are an estimated 75 comparable deaths in Clare.

# Crime & Community Safety



- Crime levels in Clare are very low compared to both the district and county rates.
- In the year to the end of January 2026, there were 30 recorded crimes per 1,000 residents in the division, compared to 59 in West Suffolk, and 57 countywide.
- All types of crime occur at a lower rate in the division than the district and county average with the exception of burglaries, which are slightly more common per head of population (3.7 per 1,000) in Clare than in the comparator areas (2.2 per 1,000 in West Suffolk, 2.3 per 1,000 in Suffolk).
- By far the most common type of crime recorded during this period was violence and sexual offences, which accounted for almost half of all recorded crimes in the division.

## Additional Information

### Parishes in Division

Bradfield Combust with Stanningfield  
 Bradfield St. Clare  
 Bradfield St. George  
 Brockley  
 Cavendish  
 Clare  
 Denston  
 Depden  
 Great Whelnetham  
 Hawkedon

Hawstead  
 Little Whelnetham  
 Poslingford  
 Rede  
 Stansfield  
 Stoke-by-Clare  
 Stradishall  
 Wepstead  
 Wickhambrook  
 Wixoe

## Data sources

Category	Indicator	Source
Demographic Profile	Quinary population table 2024	ONS 2024 mid-year population estimates
	Population pyramid 2024	ONS 2024 mid-year population estimates
	Ethnicity 2021	ONS 2021 Census
Economy	Employment by broad industrial sector 2024	ONS Business Register and Employment Survey via NOMIS
Labour market	Claimant count: The number of people claiming Jobseeker's Allowance plus those who claim Universal Credit who are out of work (% 16-64 population) January 2021-February 2026	DWP via NOMIS
Education	School information and attainment 2023-2025	Suffolk County Council CYP iHub
	% 16-17-year-olds NEET (Not in Employment, Education or Training) March 2021 to February 2026	Suffolk County Council CYP iHub via the Suffolk Observatory
Deprivation	Index of Multiple Deprivation 2025	Ministry of Housing, Communities and Local Government
Health	Life expectancy at birth 2016-2020 (2018-2020 for comparator areas)	Office for Health Improvement and Disparities
Health	Standardised mortality ratio for deaths from all causes, cancer, cardiovascular disease, and from causes considered preventable (under 75 years), 2016-2020 (2019-2023 for comparator areas). The standardised mortality ratio is the ratio of observed deaths in the study group to expected deaths in the general population	Office for Health Improvement and Disparities
Community Safety	Recorded crime rate per 1,000 resident population February 2025 to January 2026	Data.police.uk via the Suffolk Observatory

For more data and information about Clare Electoral Division, see the Suffolk Observatory [www.suffolkobservatory.info](http://www.suffolkobservatory.info)

