

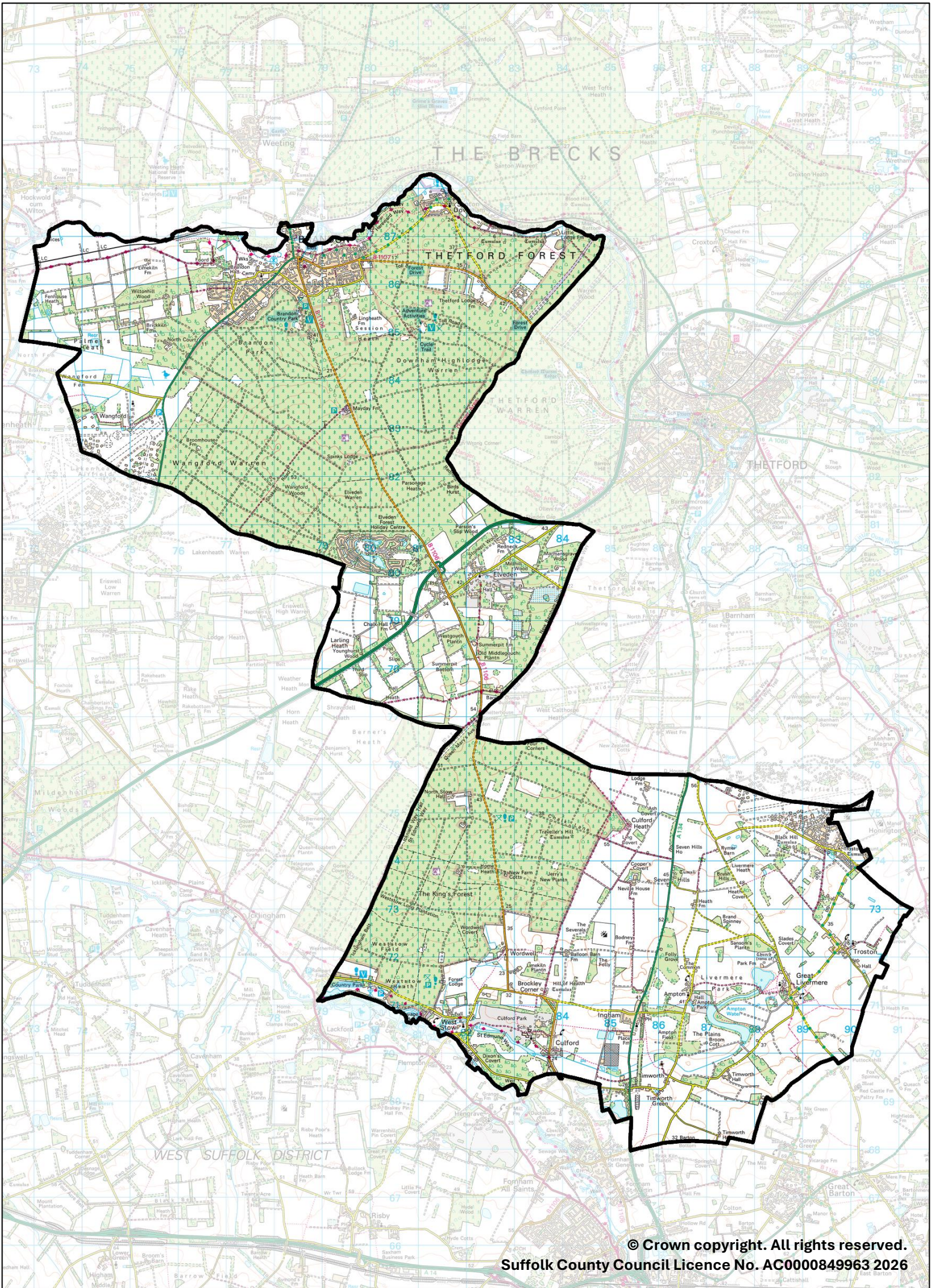
Brandon

County Electoral Division profile

May 2026

This division comprises Brandon Central, Brandon East, and Brandon West Wards in their entirety, and parts of Lakenheath, Pakenham & Troston, and Risby Wards





Contents

- Demographic Profile: Age & Ethnicity
- Economy and Labour Market
- Schools & NEET
- Index of Multiple Deprivation
- Health
- Crime & Community Safety
- Additional Information
- Data Sources

Electoral Division Profiles: an introduction

These profiles have been produced to support elected members, constituents and other interested parties in understanding the demographic, economic, social and educational profile of their neighbourhoods. We have used the latest data available at the time of publication.

Much more data is available from national and local sources than is captured here, but it is hoped that the profile will be a useful starting point for discussion, where local knowledge and experience can be used to flesh out and illuminate the information presented here.

The profile can be used to help look at some fundamental questions e.g.

- Does the age profile of the population match or differ from the national profile?
- Is there evidence of the ageing profile of the county in all the wards in the Division or just some?
- How diverse is the community in terms of ethnicity?
- What is the impact of deprivation on families and residents?
- Does there seem to be a link between deprivation and school performance?
- What is the breakdown of employment sectors in the area?
- Is it a relatively healthy area compared to the rest of the district or county?
- What sort of crime is prevalent in the community?

A vast amount of additional data is available on the **Suffolk Observatory**

www.suffolkobservatory.info

The Suffolk Observatory is a free online resource that contains all Suffolk's vital statistics; it is the one-stop-shop for information and intelligence about Suffolk. Through data, reports and maps, the Suffolk Observatory provides a comprehensive picture of the County. It is a great source for useful facts and figures that can be used for writing reports and presentations, informing strategic and business planning, preparing funding applications or supporting academic research. Data is presented around the key themes of population, children and young people, health and social care, housing, crime and community safety, deprivation, economy and employment and environment. All areas of the county are covered, right down to district, electoral division, ward and parish level, with information easily accessible in a variety of formats. You can also build your own reports for custom areas.

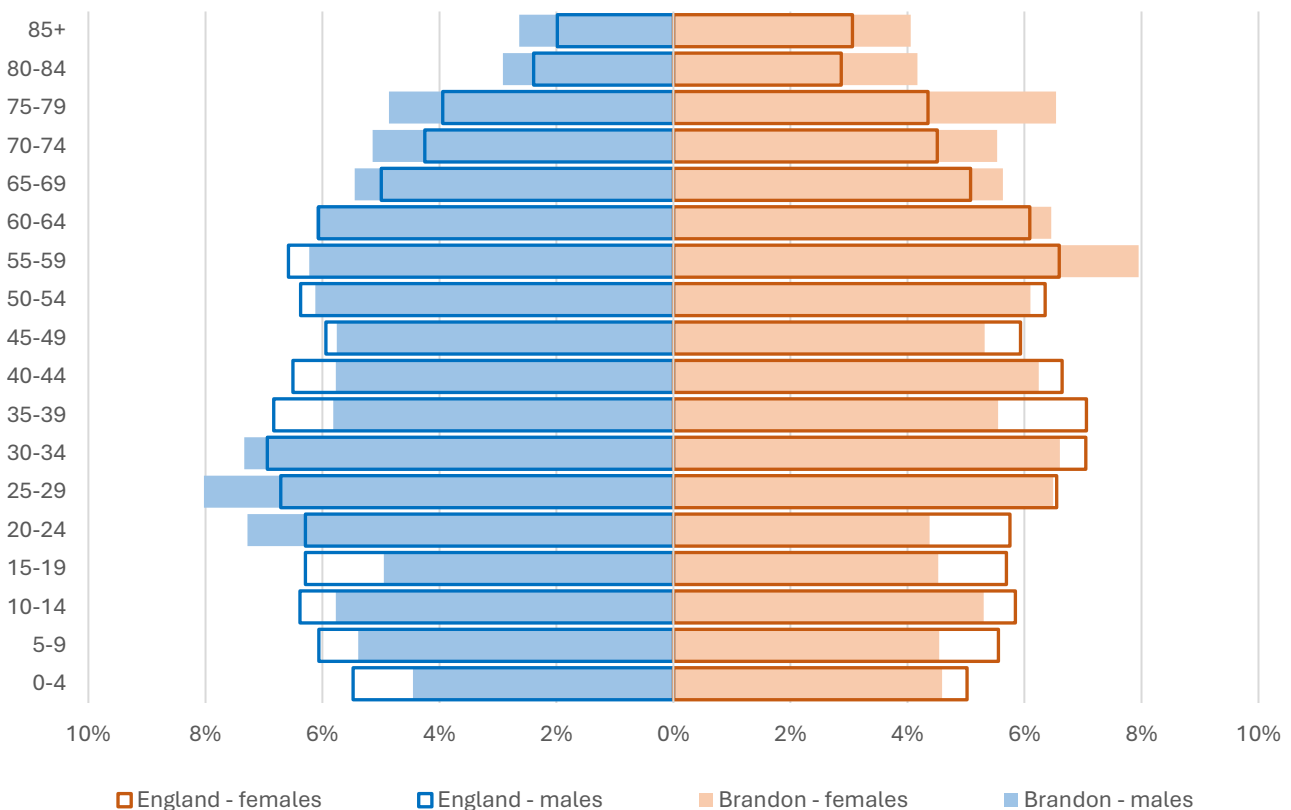
Technical Notes:

1. Where electoral divisions do not exactly match the boundaries at which the data is available (e.g. ward, Output Area or Lower Super Output Area), we have adopted a "best-fit" approach to produce a dataset.
2. District, county and national level data is provided where possible to provide a context for comparisons.

Demographic Profile - Age

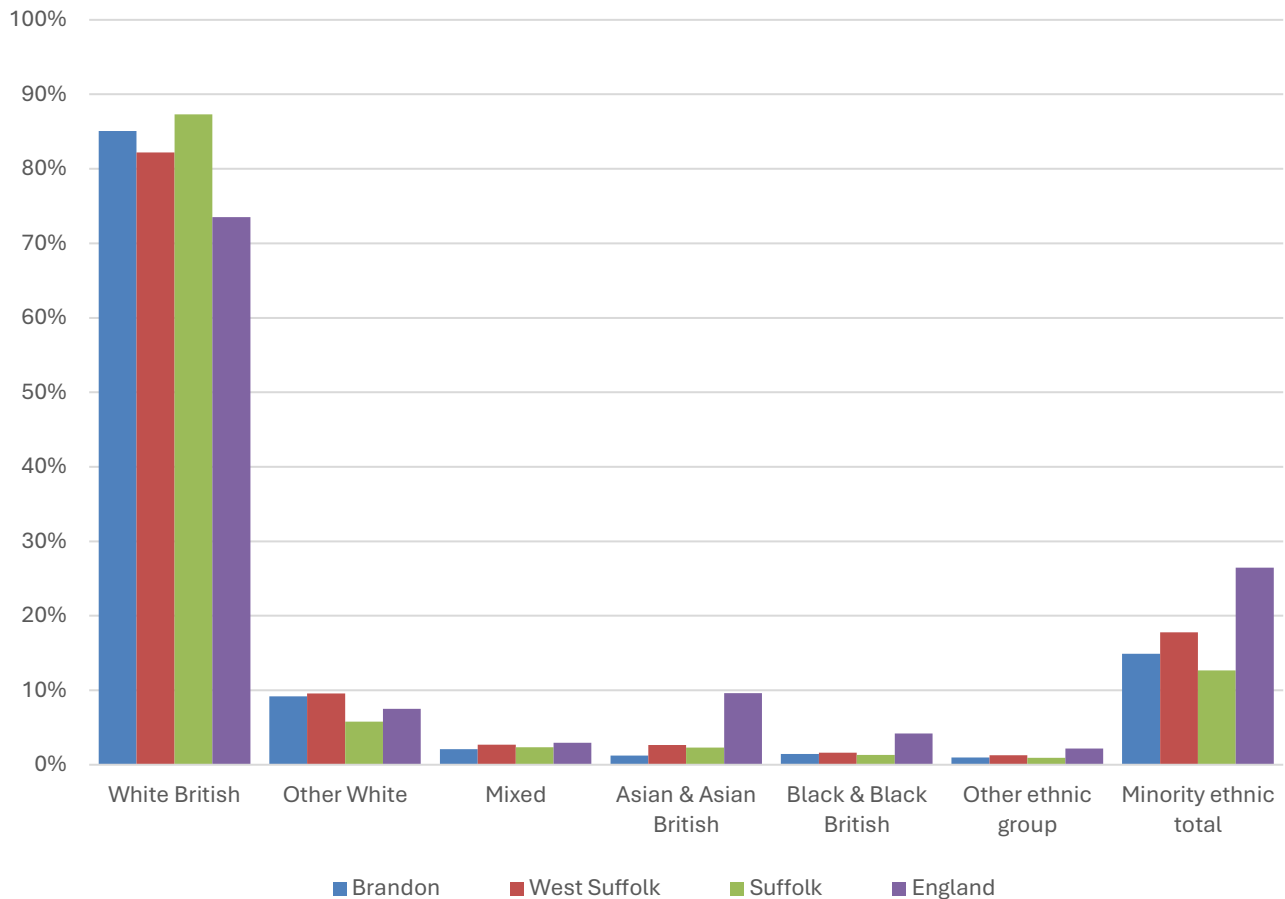
In mid-2024, the estimated population of Brandon stood at 12,991, a decrease of 4.4% over the past decade. The age structure of the component wards and the division as a whole is set out below.

	Brandon Division	Brandon Central Ward	Brandon West Ward	Brandon East Ward	Pakenham & Troston Ward	Risby Ward	Lakenheath Ward
All Ages	12,991	3,359	3,255	2,946	2,022	1,197	212
0-4	587	192	120	111	108	50	6
5-9	648	247	140	118	78	56	9
10-14	721	245	203	128	66	69	10
15-19	617	178	143	106	90	92	8
20-24	767	135	142	110	292	79	9
25-29	948	229	189	182	303	31	14
30-34	908	257	181	162	230	69	9
35-39	739	204	187	157	133	48	10
40-44	779	260	201	157	90	59	12
45-49	721	185	191	156	85	95	9
50-54	794	197	224	191	68	91	23
55-59	915	193	244	234	134	93	17
60-64	815	198	219	222	94	69	13
65-69	719	151	196	216	66	71	19
70-74	692	131	192	205	84	64	16
75-79	735	153	211	218	52	83	18
80-84	456	104	133	124	40	51	4
85+	430	100	139	149	9	27	6



- The age pyramid for Brandon division is broadly similar to that of England as a whole, though children and young people make up a smaller proportion of the local population than average.
- Females aged 55 and over and males aged 20-34 make up a larger-than-average proportion of people in Brandon
- The most common age group in the division is 25-29-year-olds (7.3% of the local population), followed by 55-59-year-olds (7.04%), and 30-34-year-olds (6.99%).
- Approaching a quarter (23.4%) of the population of Brandon is of retirement age. The England figure is 18.7%.

Demographic Profile - Ethnicity

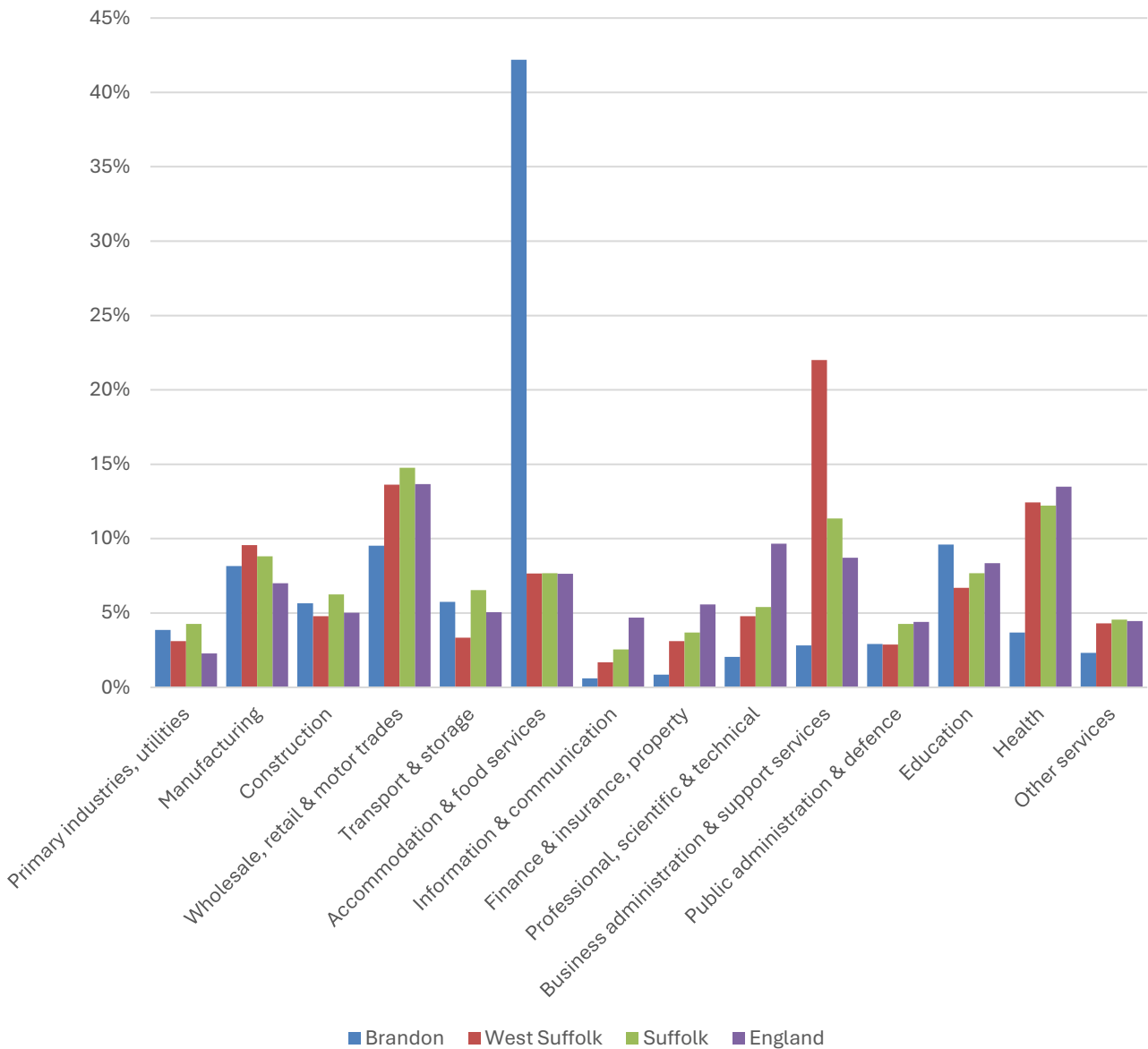


- According to the latest data (2021 Census), 85.1% of the population of Brandon is White British.
- There were 1,929 (14.9%) residents from minority ethnic groups in the division, slightly higher than the proportion in Suffolk overall, and about two thirds of the England average.
- Brandon has a broadly similar diversity profile to West Suffolk district. There is a relatively large Other White community in the division, and a smaller proportion of Asian/Asian British residents than lives in West Suffolk or Suffolk overall.

	All people		White British		Other White		Mixed		Asian and Asian British		Black and Black British		Other Ethnic Group		Total minority ethnic population	
	Count	%	Count	%	Count	%	Count	%	Count	%	Count	%	Count	%	Count	%
Brandon	12,934		11,005	85.1	1,186	9.2	271	2.1	159	1.2	185	1.4	128	1.0	1,929	14.9
West Suffolk	179,948		147,935	82.2	17,221	9.6	4,880	2.7	4,731	2.6	2,873	1.6	2,308	1.3	32,013	17.8
Suffolk	760,687		664,205	87.3	44,066	5.8	17,807	2.3	17,483	2.3	10,168	1.3	6,958	0.9	96,482	12.7
England				73.5		7.5				9.6		4.2		2.2		26.5

Economy

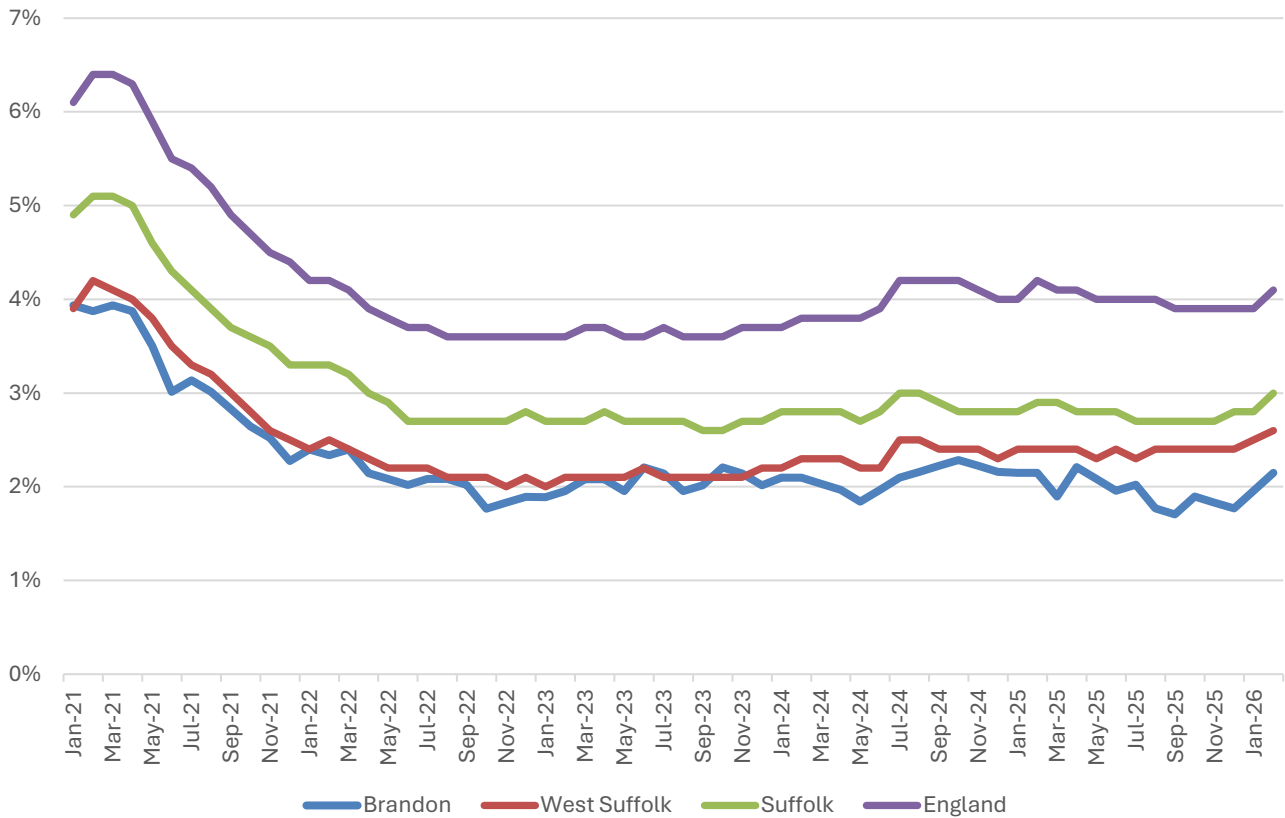
There are around 5,800 people employed in Brandon.



- Accommodation and food services (42.2% of local jobs), education (9.6%), and wholesale, retail and motor trades (9.5%) are the three largest sectors in Brandon in terms of employment.
- The Center Parcs resort near Elveden dominates local employment figures.

Labour Market

Out-of-work benefit claimant rate



- In February 2026 (the latest available data), 2.1% of 16-64-year-olds were claiming out-of-work benefits in the division.
- In common with West Suffolk, Suffolk and England as a whole, Brandon saw a steady decline in the proportion of the working age population claiming out-of-work benefits during 2021 and into 2022 following a peak during the COVID-19 pandemic.
- Since then, the claimant rate has been fairly stable at around 2%.
- The claimant rate in the division tends to be similar to or slightly below the West Suffolk figure, and below the county and national benchmarks.

Schools

School Information

Schools in the Division

Name	Phase	Academy Status	No. pupils	Average cohort size at:			
				Foundation Stage (age 4-7)	KS2 (age 7-11)	KS4 (age 14-16)	KS5 (age 16-18)
Elveden CofE Primary Academy	Primary	AC	104	15	14		
Forest Academy	Primary	AC	389	52	56		
Glade Academy	Primary	AS	180	26	34		
Breckland School	Secondary	F	615			107	

Academy Status key: AS = Academy Sponsored, AC = Academy Converter, LA = LA Maintained, F = Free

Ofsted information

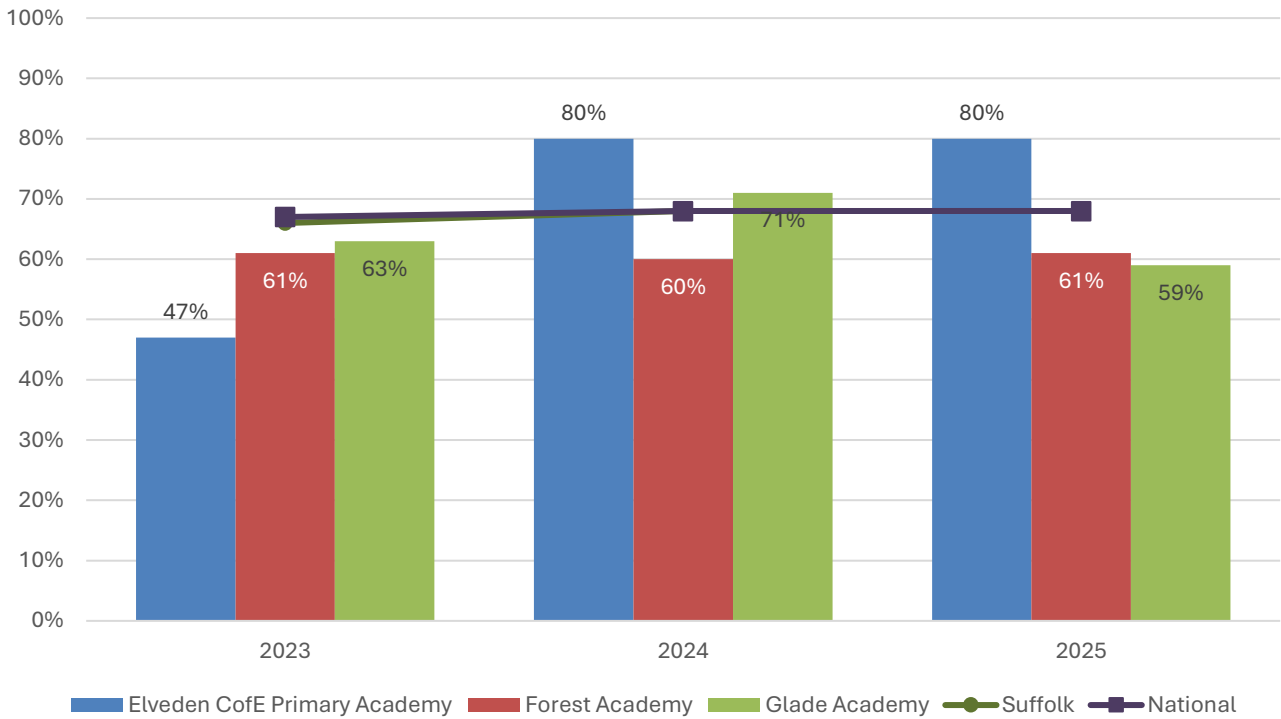
Name	Overall effectiveness	Effectiveness of leadership and management	Behaviour and attitudes	Personal development	Early years provision (if applicable)	Quality of education	Last inspection date
Elveden CofE Primary Academy	1	1	1	1	2	1	05/12/2023
Forest Academy	2	2	2	2	2	2	11/11/2021
Glade Academy	2	2	2	2	2	2	04/05/2022
Breckland School	2	2	9	9	9	9	20/09/2017

Code	Judgement	Code	Judgement
0	Insufficient evidence	SM	Special measures
1	Outstanding	8	Does not apply
2	Good	9	No judgement
3	Requires improvement	Null	No data available
4	Inadequate	Not judged	Not judged
SWK	Serious weaknesses	5	No overall grade

School Attainment

Foundation Stage Profile (reception)

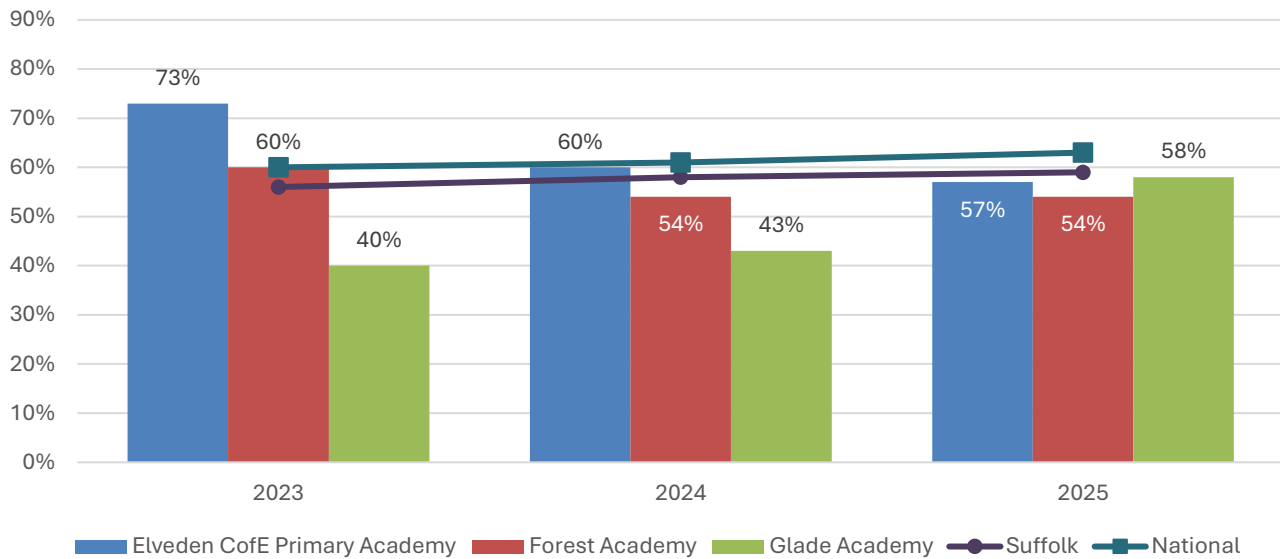
% pupils achieving Good Level of Development (GLD)



- In 2025, the percentage of pupils to achieve a Good Level of Development (GLD) at Foundation Stage (FS) was 80% at Elveden Church of England Primary Academy, 61% at Forest Academy, 59% at Glade Academy, and 68% nationally.
- Attainment was at the same high level at Elveden Church of England Primary Academy in 2024 but was much lower in 2023.
- Foundation Stage attainment at Forest Academy has been below the Suffolk and national average in each of the last three years.

Key Stage 2 (age 11)

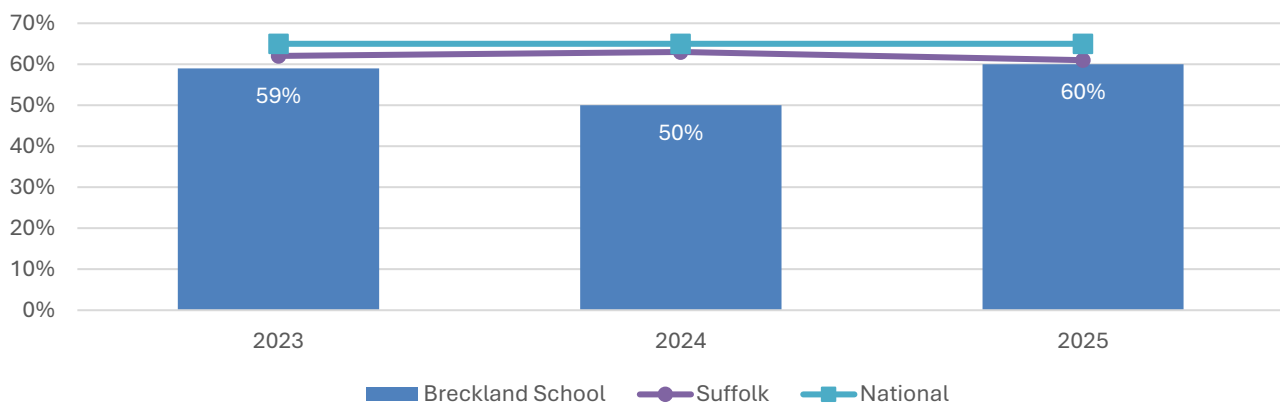
% pupils achieving the Expected Level or better in Reading, Writing and Mathematics



- In 2025, the percentage of pupils to achieve the expected level or better in reading, writing and mathematics at Key Stage 2 was 57% at Elveden CofE Primary Academy, 54% at Forest Academy, 58% at Glade Academy and 63% nationally.
- Key stage 2 attainment at Glade Academy has improved year on year during the period from 2023 to 2025, but remained below the county and national figures throughout.
- At Elveden Church of England Primary Academy, KS2 attainment has fallen steadily over the last three years. KS2 attainment at the school surpassed the national benchmark in 2023, matched it in 2024 and fell below it in 2025.
- Forest Academy also saw below average attainment in 2024 and 2025, after matching the national benchmark in 2023.

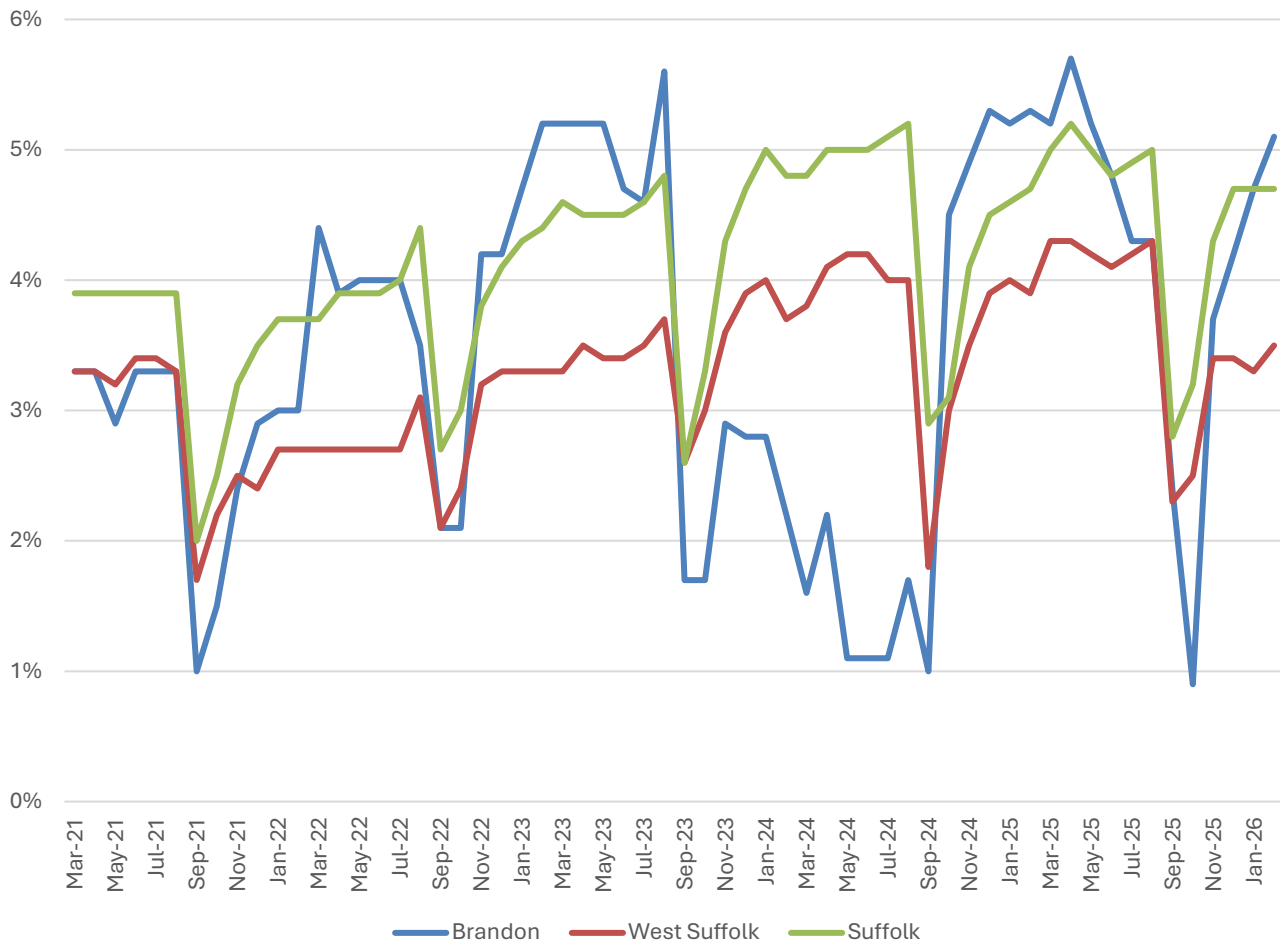
Key Stage 4 (GCSE) (age 16)

% pupils achieving level 4-9 in English and Mathematics



- Key Stage 4 attainment at Breckland School has been consistently below the county and national figures over the last three years.
- According to the most recent data, the percentage of pupils achieving level 4-9 in English and mathematics at Breckland School (60%) was one percentage point below the county figure, and five percentage points below the national benchmark.

NEET % (Not in Education, Employment or Training)



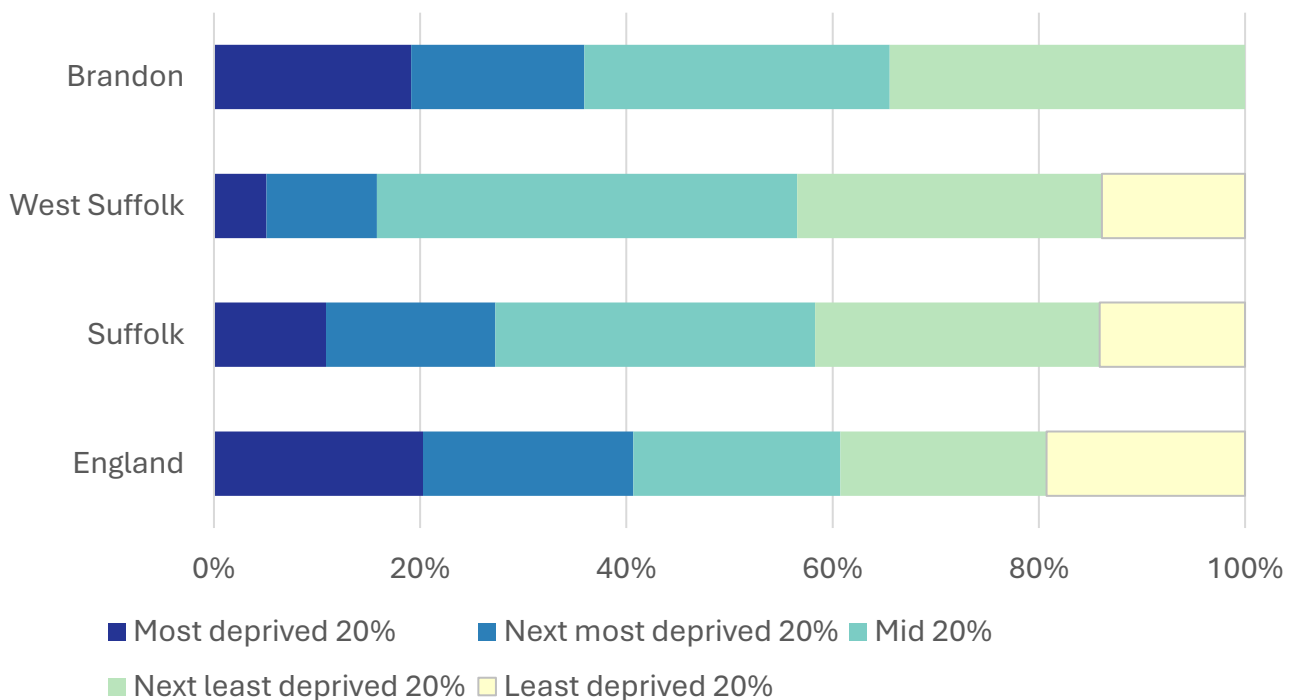
- In February 2026, 5.1% of 16-17-year-olds in Brandon were classified as NEET (not in education, employment or training).
- NEET levels fluctuate considerably according to the time of year and due to small numbers of 16-17-year-olds in the division, typically being at their lowest at the beginning of a new school year.
- In Brandon, the proportion of children who are NEET is generally above the district figure and similar to the county average, but NEET levels in the division fluctuate considerably.

Index of Multiple Deprivation (IMD) 2025 (see map overleaf)

The IMD combines a number of indicators, chosen to cover a range of economic, social and housing issues, into a single deprivation score for each small area in England. This allows each area to be ranked relative to one another according to their level of deprivation. Small areas (Lower Super Output Areas, average population 1,700) are most commonly described as being in 1 of 5 quintile bands. The bottom quintile represents the 20% of areas that are the most deprived in England; these are shaded pale yellow on the map. The top quintile represents the least deprived areas in England and is shaded dark blue.

The Index is widely used to analyse patterns of deprivation, identify areas that would benefit from special initiatives or programmes and as a tool to determine eligibility for specific funding streams.

The chart below shows the percentage of the population of the division that live in areas ranked among each of the five quintiles of deprivation, alongside the district, county and England comparators.



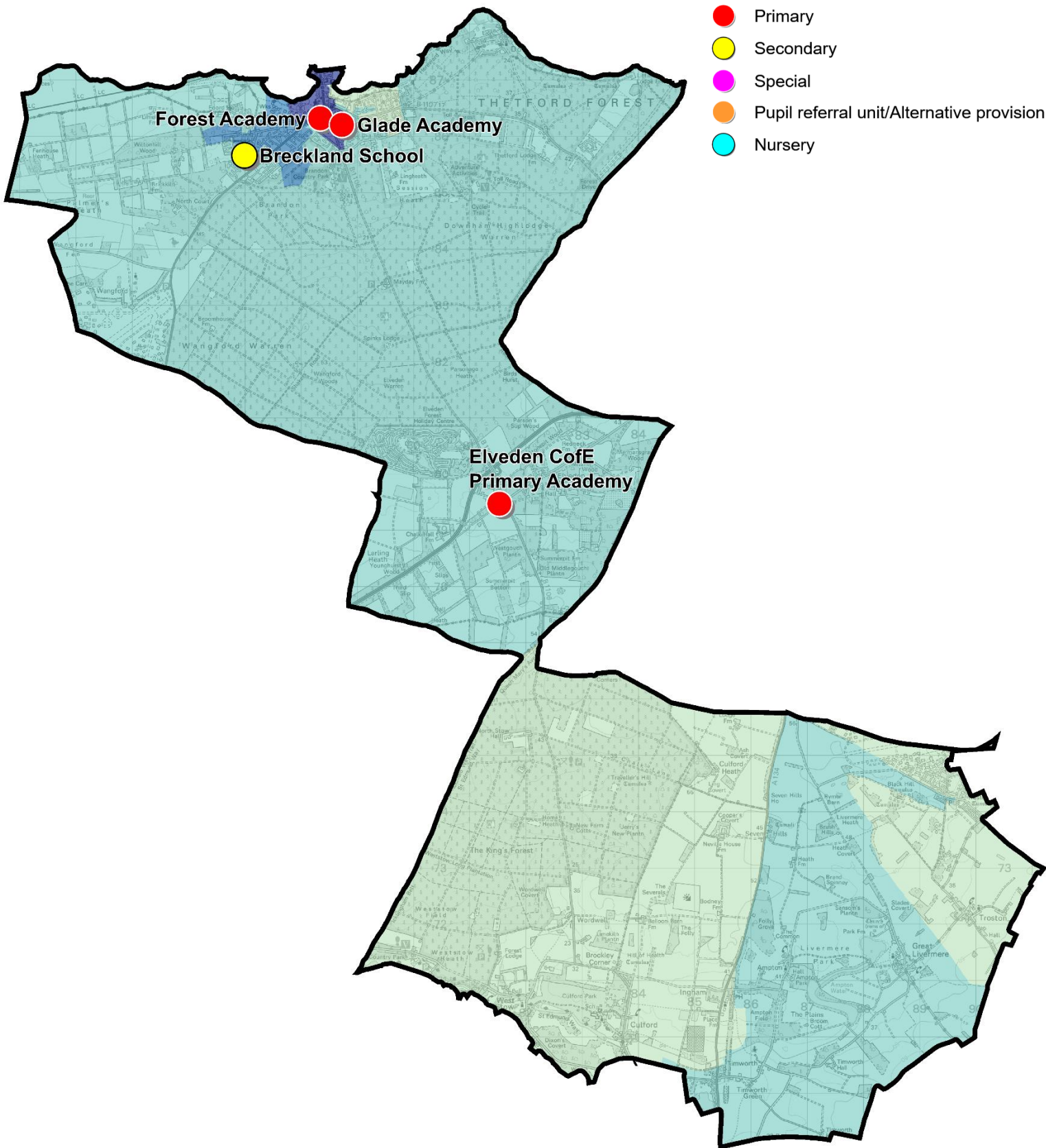
- The 2025 IMD shows that deprivation levels in Brandon are varied, with parts of the division ranked in four of the five deprivation quintiles in England.
- Just over a third of the population of the division live in areas that are ranked among the second least deprived 20% of areas in England, with 30% of residents living in neighbourhoods among the middle quintile.
- More than a third of Brandon's population lives areas ranked in the most deprived two quintiles; 19% in the most deprived quintile and 17% in the next least deprived.
- See the map overleaf for the distribution of IMD 2025 results across the division.

IMD 2025 quintile

- Least deprived 20%
- Next least deprived 20%
- Mid 20%
- Next most deprived 20%
- Most deprived 20%

School Phase

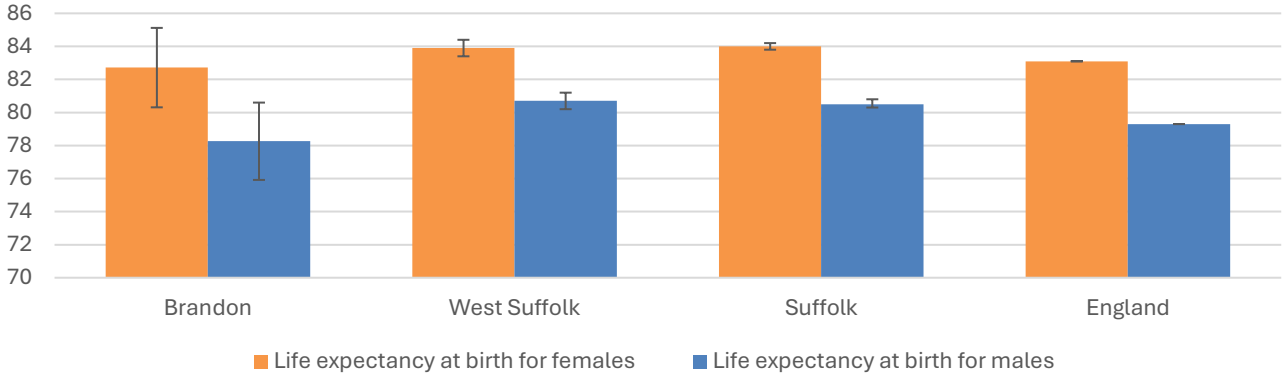
- Primary
- Secondary
- Special
- Pupil referral unit/Alternative provision
- Nursery



Health

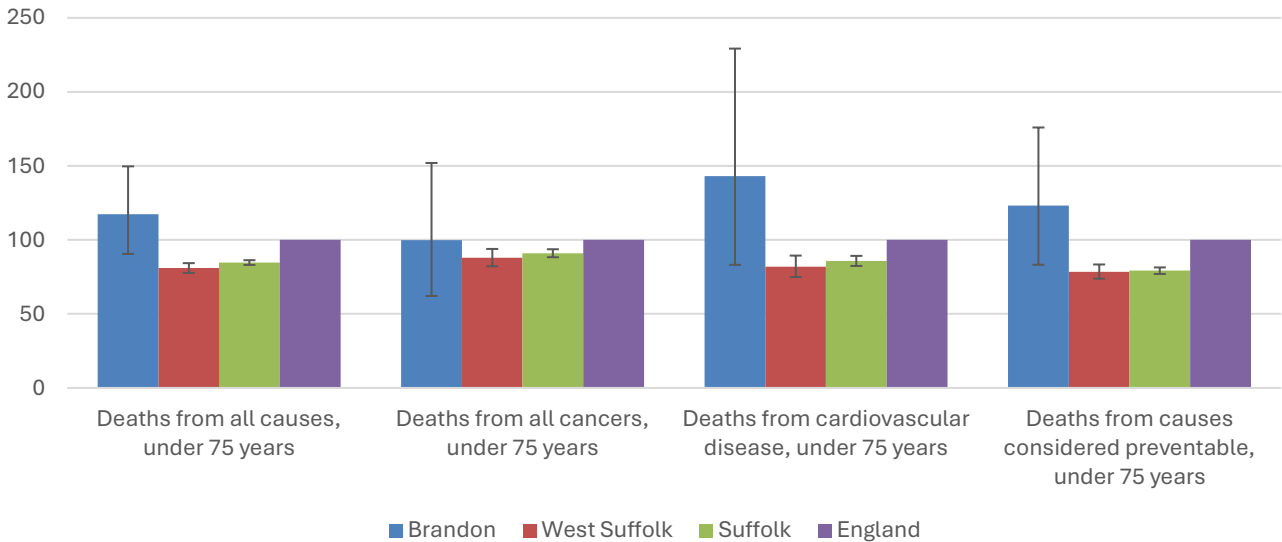
The local data used here is based on relatively small numbers. The confidence limits provide an indication of the reliability of the data. The 95% confidence intervals utilised on the chart provide a range within which there is 95% chance of the true result lying.

Life expectancy at birth



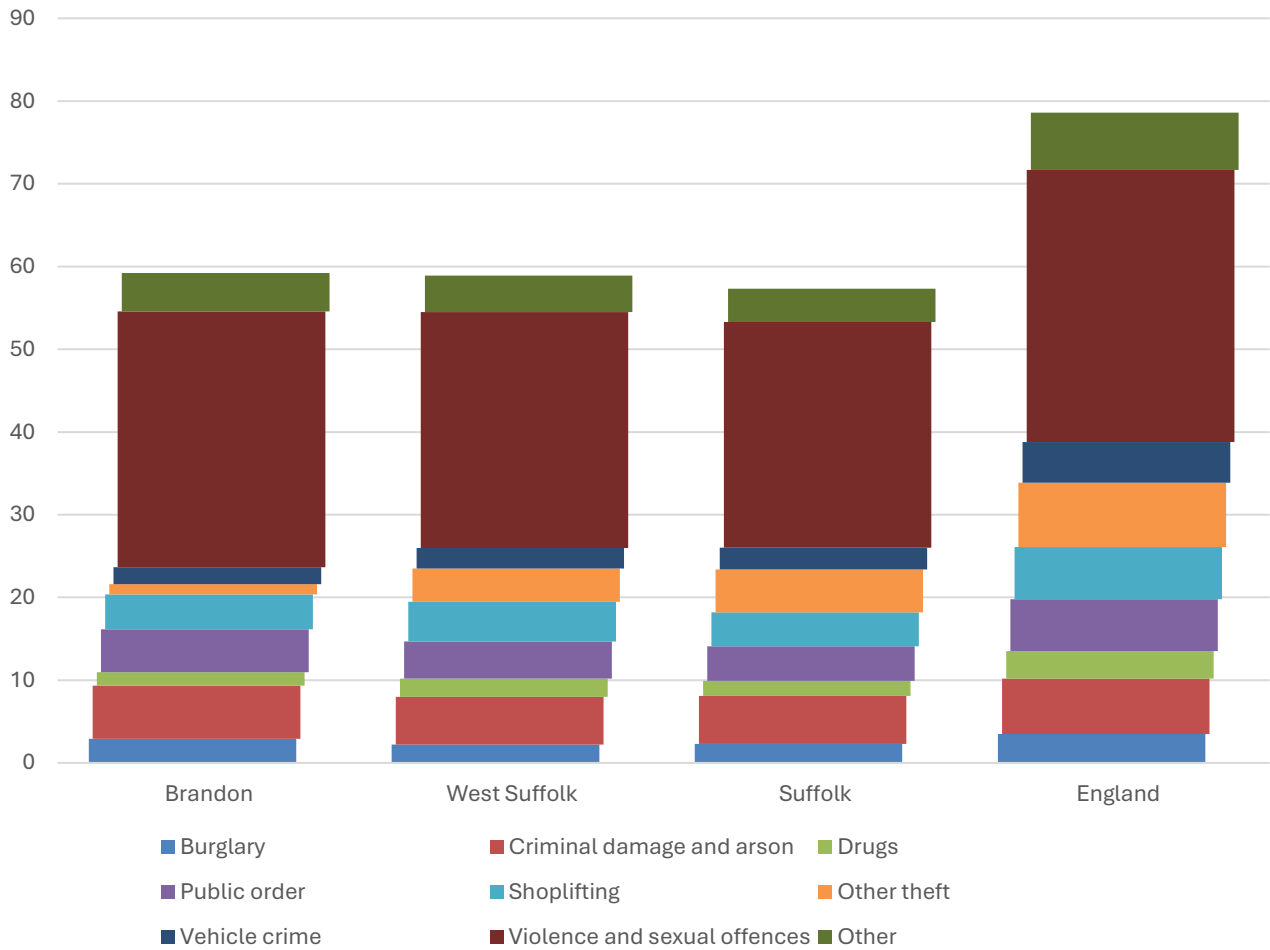
- The latest life expectancy at birth estimates for Brandon are 82.7 for females (the England figure is 83.1), and 78.3 for males (compared to 79.3 nationally).
- Life expectancy for both males and females in the division are statistically similar to the England figures.

Deaths, under 75 years, standardised mortality ratio



- Estimated standardised mortality ratios for early deaths from all causes, cardiovascular disease and causes considered preventable in Brandon are above 100, indicating that deaths in under 75s due to these causes are higher than in England.
- Confidence intervals around these estimates are wide for local data, however, and early deaths from all of the causes shown here are statistically similar in the division to West Suffolk, Suffolk, and England.
- The standardised mortality ratio data shown here means that for every 100 early deaths from all causes across England as a whole, there are an estimated 117 comparable deaths in Brandon.

Crime & Community Safety



- Crime levels in Brandon very similar to those of West Suffolk and Suffolk county.
- In the year to the end of January 2026, there were 59 recorded crimes per 1,000 residents in the division, compared to 59 in West Suffolk, and 57 countywide.
- A relatively high rate of violence and sexual offences was recorded in Brandon during this time, while there was a relatively low rate of other theft offences.

Additional Information

Parishes in Division

Ampton	Little Livermere
Brandon	Santon Downham
Culford	Timworth
Elveden	Troston
Great Livermere	West Stow
Honington (part)	Wordwell
Ingham	

Data sources

Category	Indicator	Source
Demographic Profile	Quinary population table 2024	ONS 2024 mid-year population estimates
	Population pyramid 2024	ONS 2024 mid-year population estimates
	Ethnicity 2021	ONS 2021 Census
Economy	Employment by broad industrial sector 2024	ONS Business Register and Employment Survey via NOMIS
Labour market	Claimant count: The number of people claiming Jobseeker's Allowance plus those who claim Universal Credit who are out of work (% 16-64 population) January 2021-February 2026	DWP via NOMIS
Education	School information and attainment 2023-2025	Suffolk County Council CYP iHub
	% 16-17-year-olds NEET (Not in Employment, Education or Training) March 2021 to February 2026	Suffolk County Council CYP iHub via the Suffolk Observatory
Deprivation	Index of Multiple Deprivation 2025	Ministry of Housing, Communities and Local Government
Health	Life expectancy at birth 2016-2020 (2018-2020 for comparator areas)	Office for Health Improvement and Disparities
Health	Standardised mortality ratio for deaths from all causes, cancer, cardiovascular disease, and from causes considered preventable (under 75 years), 2016-2020 (2019-2023 for comparator areas). The standardised mortality ratio is the ratio of observed deaths in the study group to expected deaths in the general population	Office for Health Improvement and Disparities
Community Safety	Recorded crime rate per 1,000 resident population February 2025 to January 2026	Data.police.uk via the Suffolk Observatory

For more data and information about Brandon Electoral Division, see the Suffolk Observatory www.suffolkobservatory.info

