

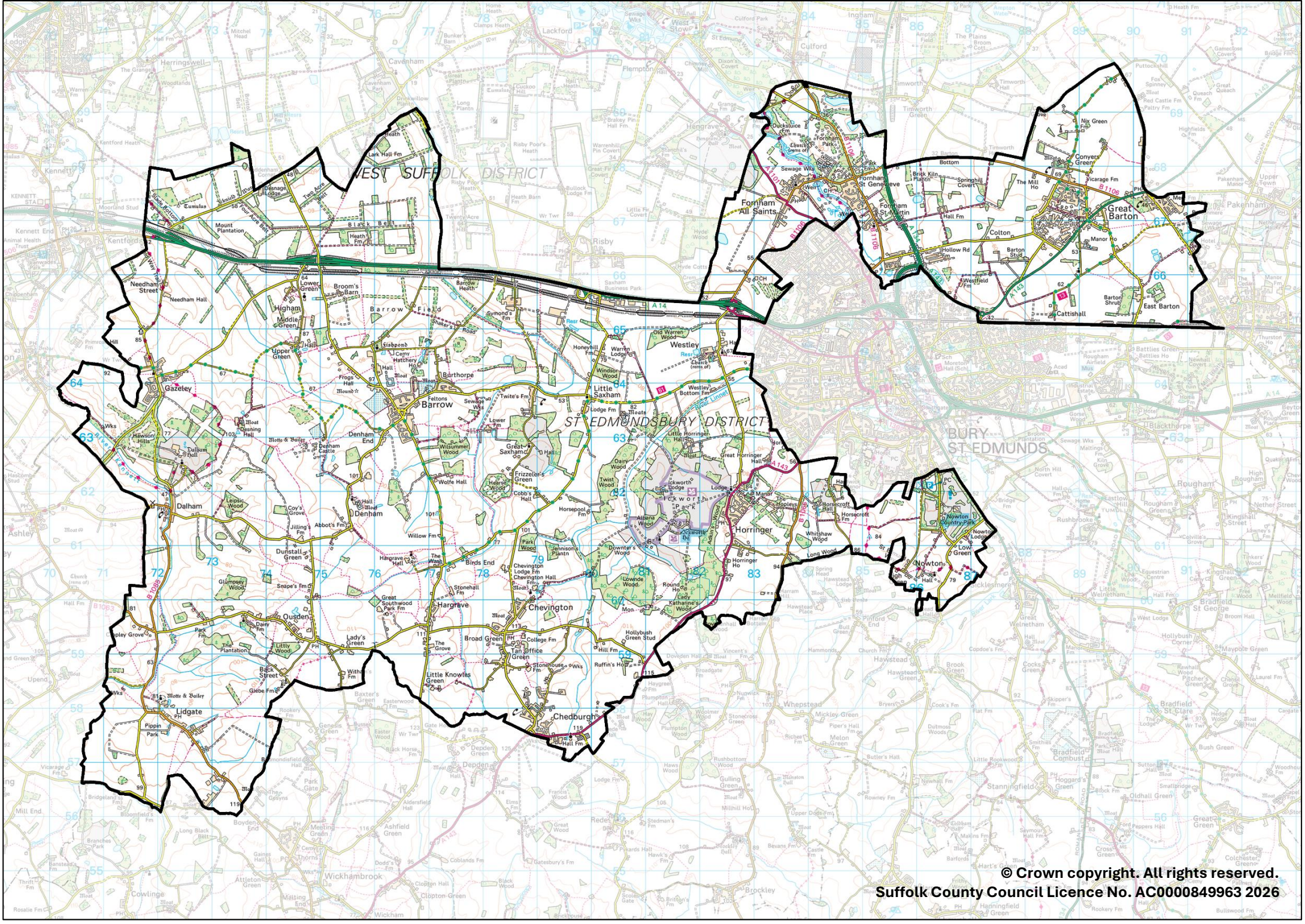
Barrow & Thingoe

County Electoral Division profile

May 2026

This division comprises Barrow and The Fornhams & Great Barton Wards in their entirety, and parts of Chedburgh & Chevington, Horringer, and Kentford & Moulton Wards





Contents

- Demographic Profile: Age & Ethnicity
- Economy and Labour Market
- Schools & NEET
- Index of Multiple Deprivation
- Health
- Crime & Community Safety
- Additional Information
- Data Sources

Electoral Division Profiles: an introduction

These profiles have been produced to support elected members, constituents and other interested parties in understanding the demographic, economic, social and educational profile of their neighbourhoods. We have used the latest data available at the time of publication.

Much more data is available from national and local sources than is captured here, but it is hoped that the profile will be a useful starting point for discussion, where local knowledge and experience can be used to flesh out and illuminate the information presented here.

The profile can be used to help look at some fundamental questions e.g.

- Does the age profile of the population match or differ from the national profile?
- Is there evidence of the ageing profile of the county in all the wards in the Division or just some?
- How diverse is the community in terms of ethnicity?
- What is the impact of deprivation on families and residents?
- Does there seem to be a link between deprivation and school performance?
- What is the breakdown of employment sectors in the area?
- Is it a relatively healthy area compared to the rest of the district or county?
- What sort of crime is prevalent in the community?

A vast amount of additional data is available on the **Suffolk Observatory**

www.suffolkobservatory.info

The Suffolk Observatory is a free online resource that contains all Suffolk's vital statistics; it is the one-stop-shop for information and intelligence about Suffolk. Through data, reports and maps, the Suffolk Observatory provides a comprehensive picture of the County. It is a great source for useful facts and figures that can be used for writing reports and presentations, informing strategic and business planning, preparing funding applications or supporting academic research. Data is presented around the key themes of population, children and young people, health and social care, housing, crime and community safety, deprivation, economy and employment and environment. All areas of the county are covered, right down to district, electoral division, ward and parish level, with information easily accessible in a variety of formats. You can also build your own reports for custom areas.

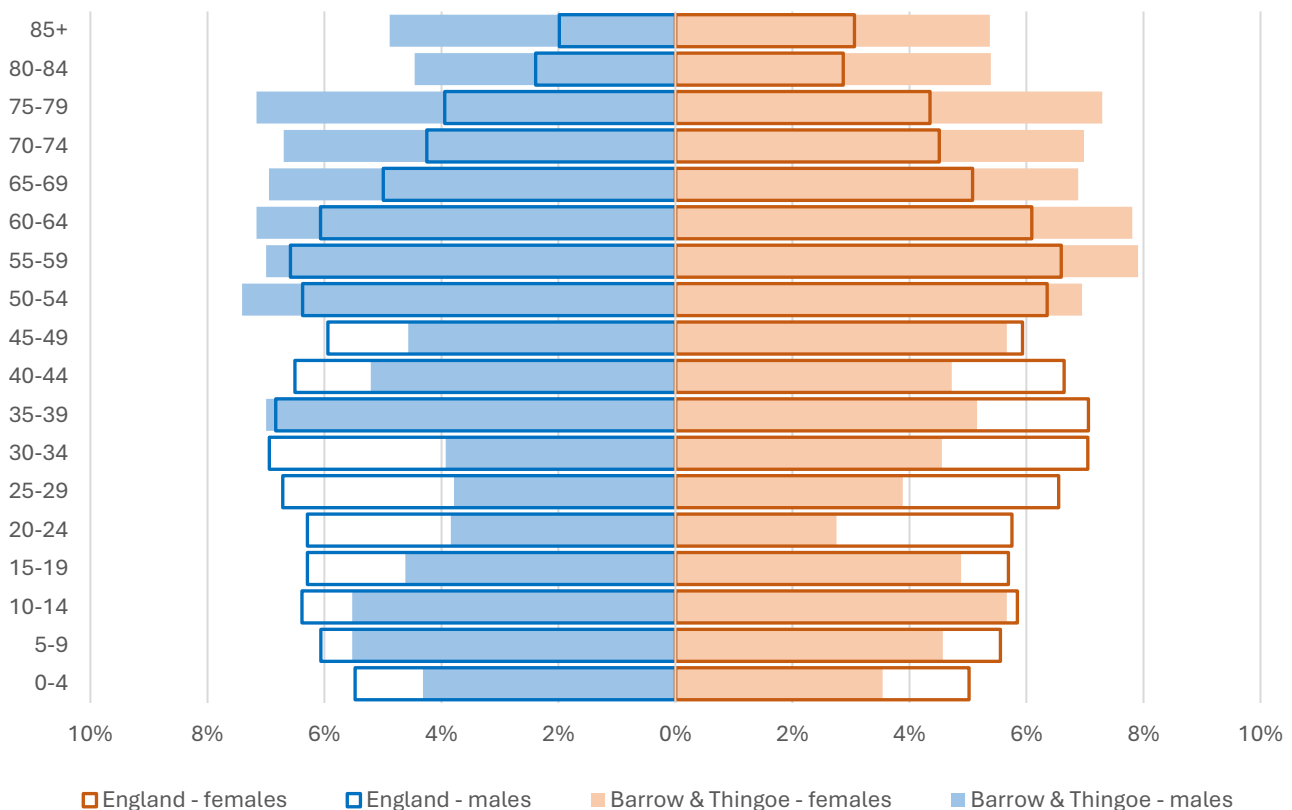
Technical Notes:

1. Where electoral divisions do not exactly match the boundaries at which the data is available (e.g. ward, Output Area or Lower Super Output Area), we have adopted a "best-fit" approach to produce a dataset.
2. District, county and national level data is provided where possible to provide a context for comparisons.

Demographic Profile - Age

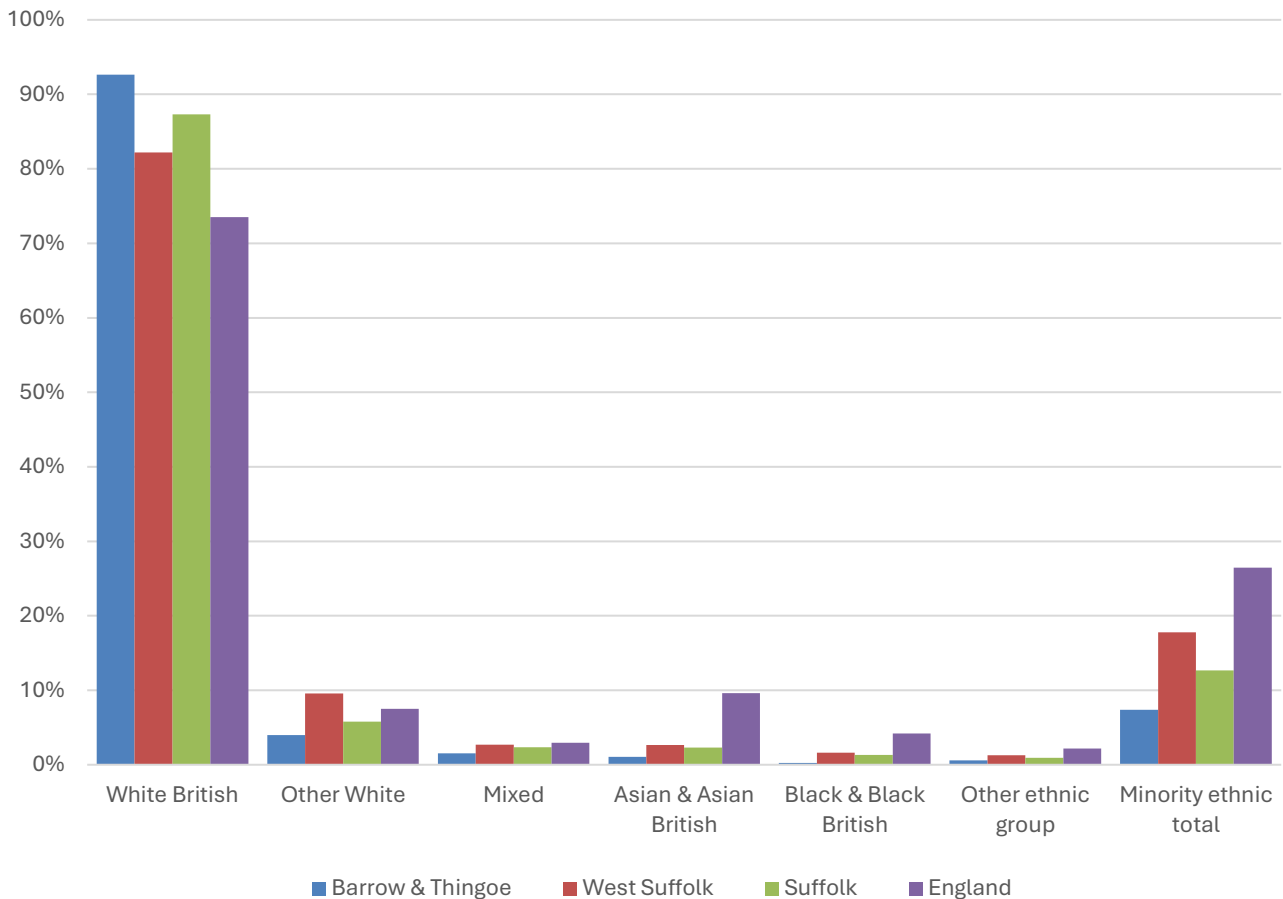
In mid-2024, the estimated population of Barrow and Thingoe stood at 11,471, an increase of 6.8% over the past decade. The age structure of the component wards and the division as a whole is set out below.

	Barrow & Thingoe Division	The Fornhams & Great Barton Ward	Barrow Ward	Chedburgh & Chevington Ward	Horringer Ward	Kentford & Moulton Ward
All Ages	11,471	4,238	2,794	2,318	1,187	934
0-4	450	129	140	98	59	24
5-9	578	186	161	124	56	51
10-14	642	222	192	124	65	39
15-19	545	190	148	107	72	28
20-24	377	121	106	89	30	31
25-29	440	127	129	99	41	44
30-34	487	132	149	108	39	59
35-39	695	321	166	99	58	51
40-44	569	186	140	106	65	72
45-49	588	204	152	109	76	47
50-54	823	278	228	156	96	65
55-59	856	294	198	184	80	100
60-64	859	287	191	223	85	73
65-69	793	322	144	181	81	65
70-74	785	359	142	155	72	57
75-79	829	339	171	160	88	71
80-84	566	256	118	90	69	33
85+	589	285	119	106	55	24



- The age pyramid for Barrow and Thingoe division shows a considerably higher proportion of people aged 50 and over than in England as a whole.
- The most common age group in the division is 60-64-year-olds (7.49% of the local population), followed by 55-59-year-olds (7.46%), and 75-79-year-olds (7.23%).
- Approaching one third (31.1%) of the population of Barrow and Thingoe is of retirement age. The England figure is 18.7%.
- There is a particularly low proportion of adults aged between 20 and 34 in the division.

Demographic Profile - Ethnicity

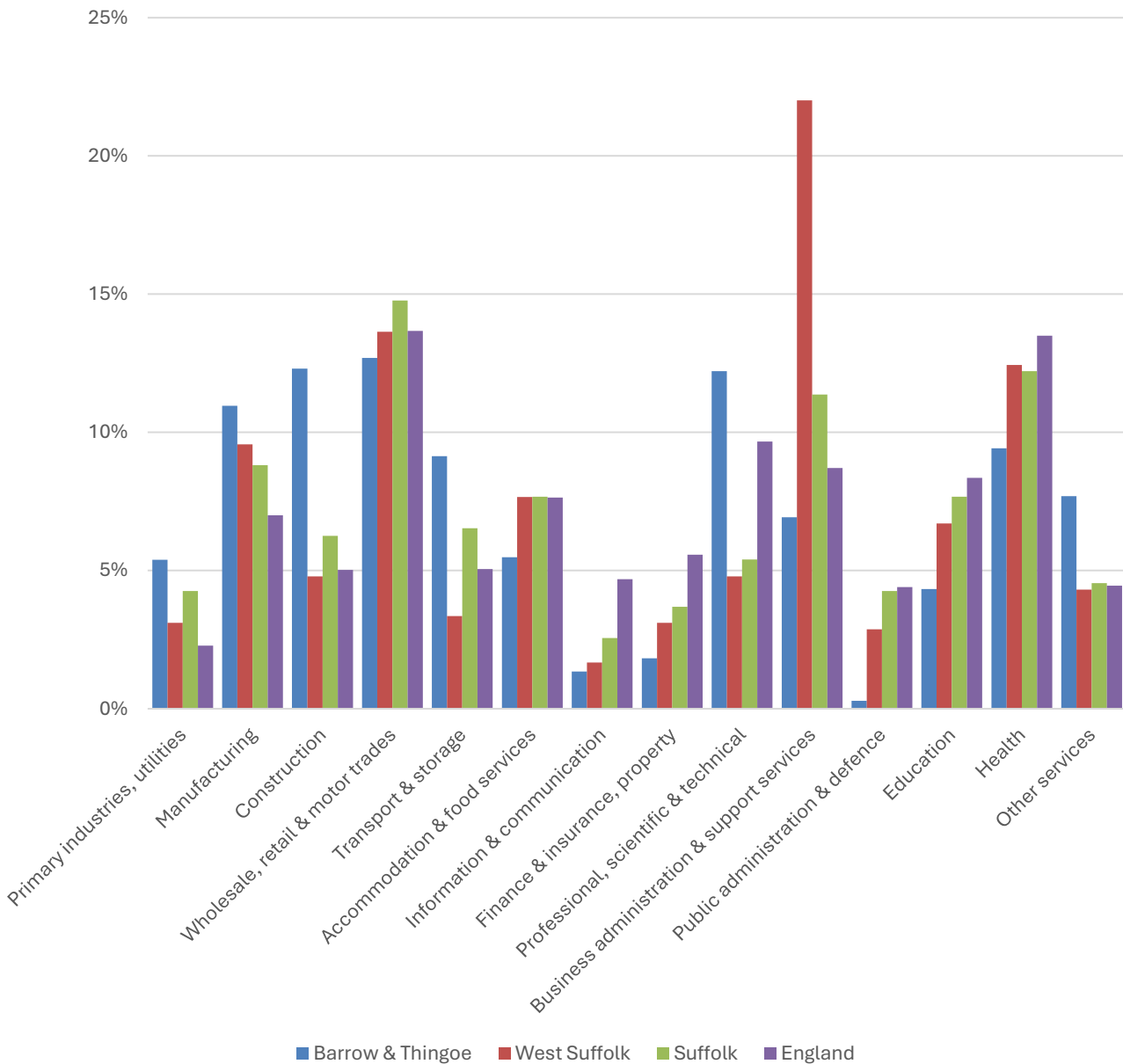


- According to the latest data (2021 Census), 92.6% of the population of Barrow and Thingoe is White British.
- There were 821 (7.4%) residents from minority ethnic groups in the division, around 0.6 times the proportion in Suffolk overall, and less than a third of the England average.
- Barrow and Thingoe has a less ethnically diverse population profile than West Suffolk overall, with lower proportions of all minority ethnic groups living in the division.

	All people		White British		Other White		Mixed		Asian and Asian British		Black and Black British		Other Ethnic Group		Total minority ethnic population	
	Count	%	Count	%	Count	%	Count	%	Count	%	Count	%	Count	%	Count	%
Barrow & Thingoe	11,138		10,317	92.6	443	4.0	169	1.5	118	1.1	27	0.2	64	0.6	821	7.4
West Suffolk	179,948		147,935	82.2	17,221	9.6	4,880	2.7	4,731	2.6	2,873	1.6	2,308	1.3	32,013	17.8
Suffolk	760,687		664,205	87.3	44,066	5.8	17,807	2.3	17,483	2.3	10,168	1.3	6,958	0.9	96,482	12.7
England				73.5		7.5		3.0		9.6		4.2		2.2		26.5

Economy

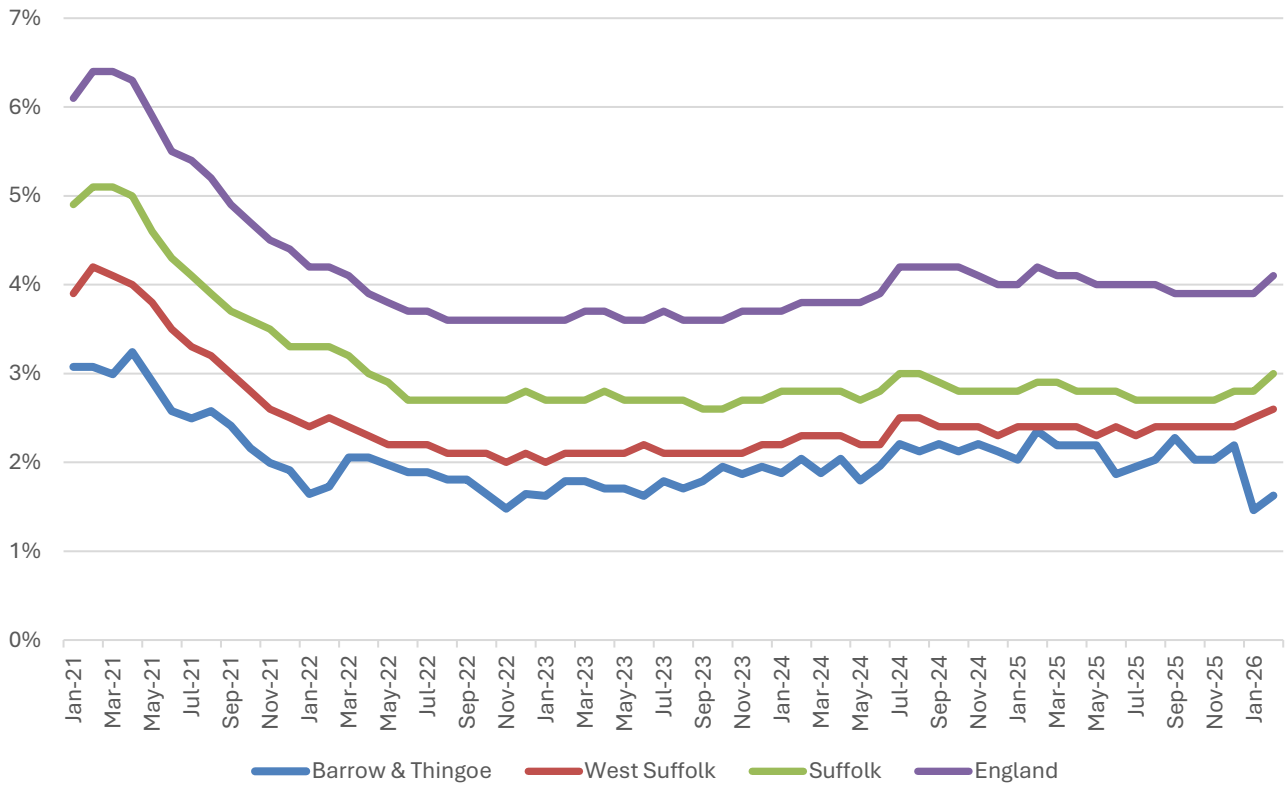
There are around 5,200 people employed in Barrow and Thingoe.



- Wholesale, retail and motor trades (12.7% of local jobs), construction (12.3%), and professional, scientific and technical activities (12.2%) are the three largest sectors in Barrow & Thingoe in terms of employment.
- Construction and professional, scientific and technical activities stand out in particular as they account for a much larger proportion of jobs locally than they do across the comparator areas of West Suffolk, Suffolk, and England.
- Manufacturing also accounts for more than a tenth of jobs in the division.

Labour Market

Out-of-work benefit claimant rate



- In February 2026 (the latest available data), 1.6% of 16-64-year-olds were claiming out-of-work benefits in the division.
- In common with West Suffolk, Suffolk and England as a whole, Barrow and Thingoe saw a steady decline in the proportion of the working age population claiming out-of-work benefits during 2021 and into 2022 following a peak during the COVID-19 pandemic.
- Since then, the claimant rate has been largely stable at around 2%.
- The claimant rate in the division is consistently lower than the district, county and national benchmarks.

Schools

School Information

Schools in the Division

Name	Phase	Academy Status	No. pupils	Average cohort size at:			
				Foundation Stage (age 4-7)	KS2 (age 7-11)	KS4 (age 14-16)	KS5 (age 16-18)
Barrow CEVCP School	Primary	LA	199	30	28		
Great Barton CofE Primary Academy	Primary	AC	188	24	29		
Ickworth Park Primary School	Primary	AC	185	27	25		

Academy Status key: AS = Academy Sponsored, AC = Academy Converter, LA = LA Maintained, F = Free

Ofsted information

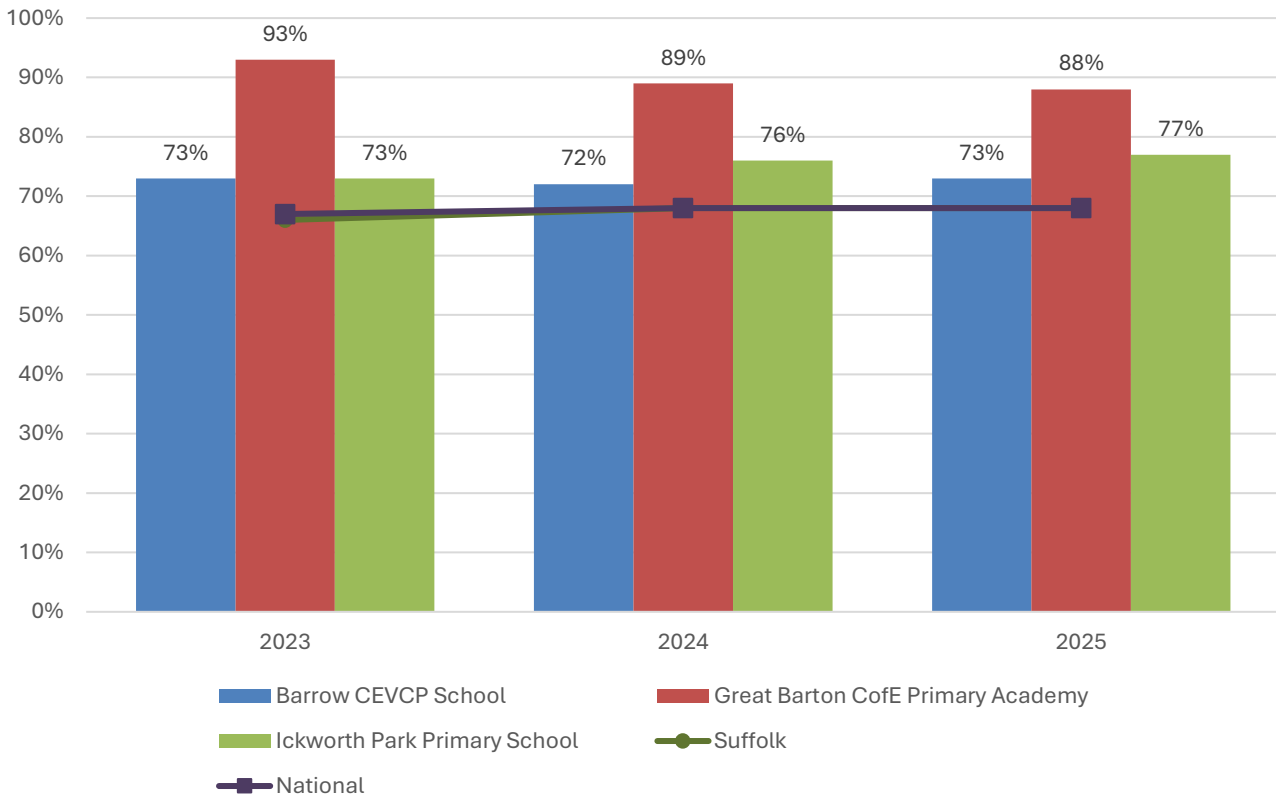
Name	Overall effectiveness	Effectiveness of leadership and management	Behaviour and attitudes	Personal development	Early years provision (if applicable)	Quality of education	Last inspection date
Barrow CEVCP School	5	2	1	1	1	2	24/09/2024
Great Barton CofE Primary Academy	2	2	1	1	1	2	14/11/2023
Ickworth Park Primary School	2	2	2	2	2	2	19/06/2024

Code	Judgement	Code	Judgement
0	Insufficient evidence	SM	Special measures
1	Outstanding	8	Does not apply
2	Good	9	No judgement
3	Requires improvement	Null	No data available
4	Inadequate	Not judged	Not judged
SWK	Serious weaknesses	5	No overall grade

School Attainment

Foundation Stage Profile (reception)

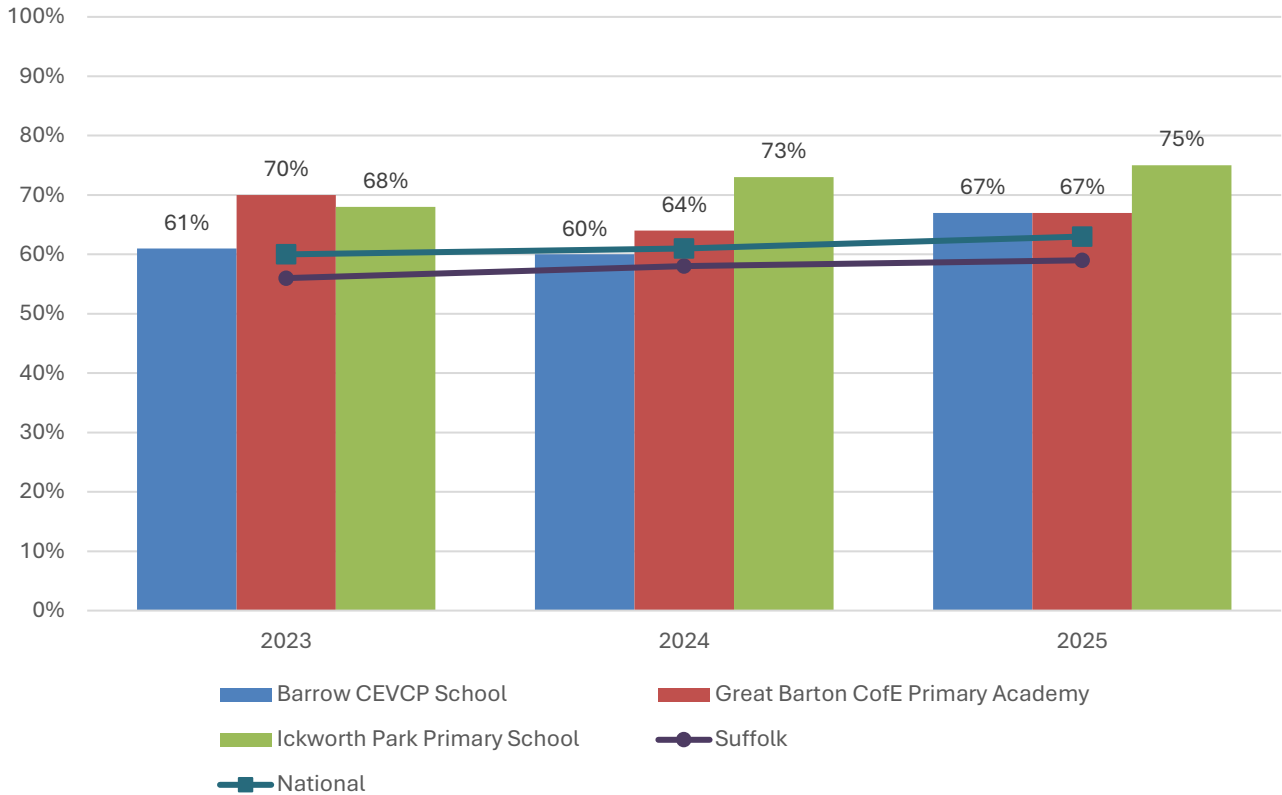
% pupils achieving Good Level of Development (GLD)



- In 2025, the percentage of pupils to achieve a Good Level of Development (GLD) at Foundation Stage (FS) was 73% at Barrow CEVCP School, 88% at Great Barton Church of England Primary Academy, 77% at Ickworth Park Primary School, and 68% nationally.
- Foundation Stage attainment at all schools in Barrow and Thingoe has been above the Suffolk and national average in each of the last three years.
- Great Barton Church of England Primary Academy in particular has seen very high FS attainment during this period.

Key Stage 2 (age 11)

% pupils achieving the Expected Level or better in Reading, Writing and Mathematics



- In 2025, the percentage of pupils to achieve the expected level or better in reading, writing and mathematics at Key Stage 2 was 67% at Barrow CEVCP School, 67% at Great Barton Church of England Primary Academy, 75% at Ickworth Park Primary School and 63% nationally.
- Key stage 2 attainment at Great Barton Church of England Primary Academy and Ickworth Park Primary School has been consistently above the county and national average over the past three years.
- Attainment at Barrow CEVCP School has also been consistent, and was just one percentage point below the national benchmark in 2024.

NEET % (Not in Education, Employment or Training)



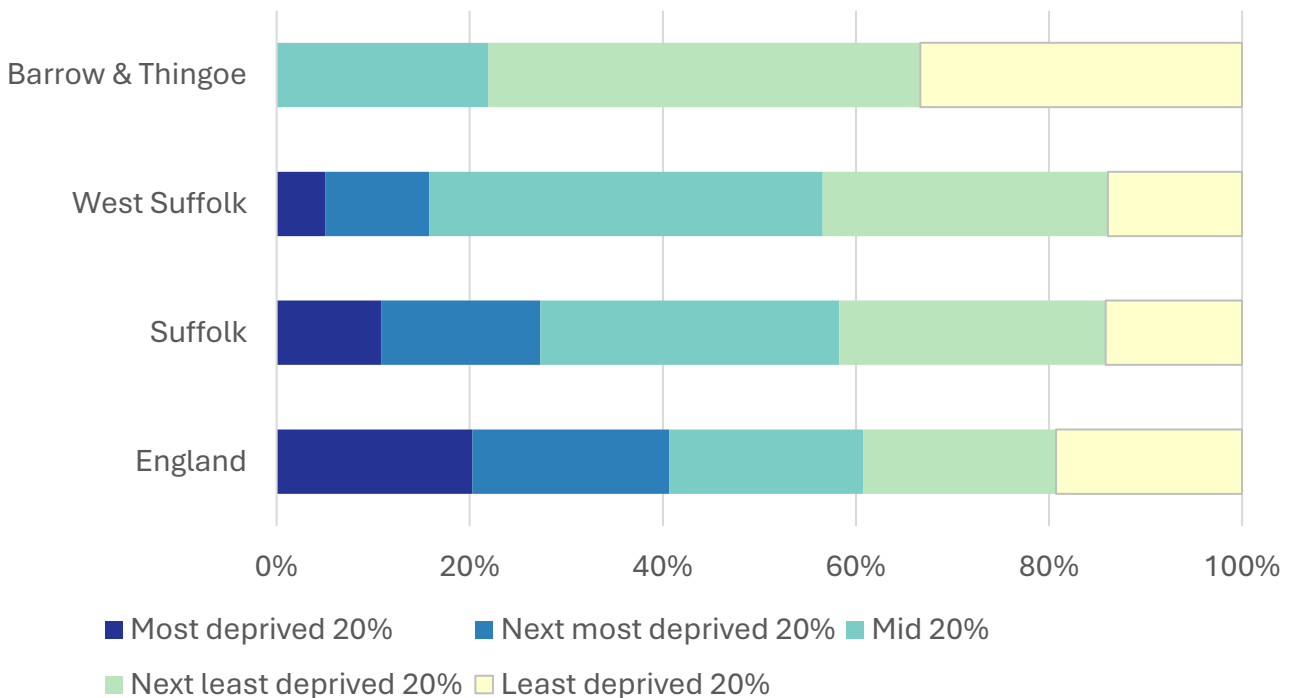
- In February 2026, 2.2% of 16-17-year-olds in Barrow and Thingoe were classified as NEET (not in education, employment or training).
- NEET levels fluctuate considerably according to the time of year and due to small numbers of 16-17-year-olds in the division, typically being at their lowest at the beginning of a new school year.
- In Barrow and Thingoe, the proportion of children who are NEET is almost invariably below the district and county figures.

Index of Multiple Deprivation (IMD) 2025 (see map overleaf)

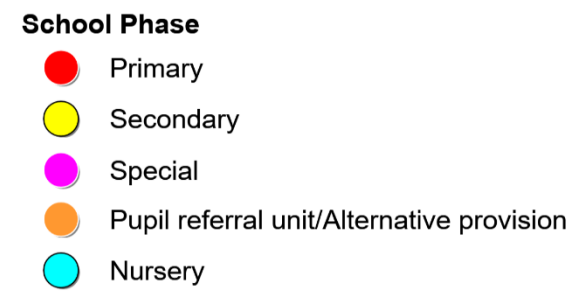
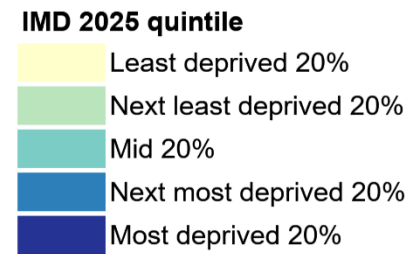
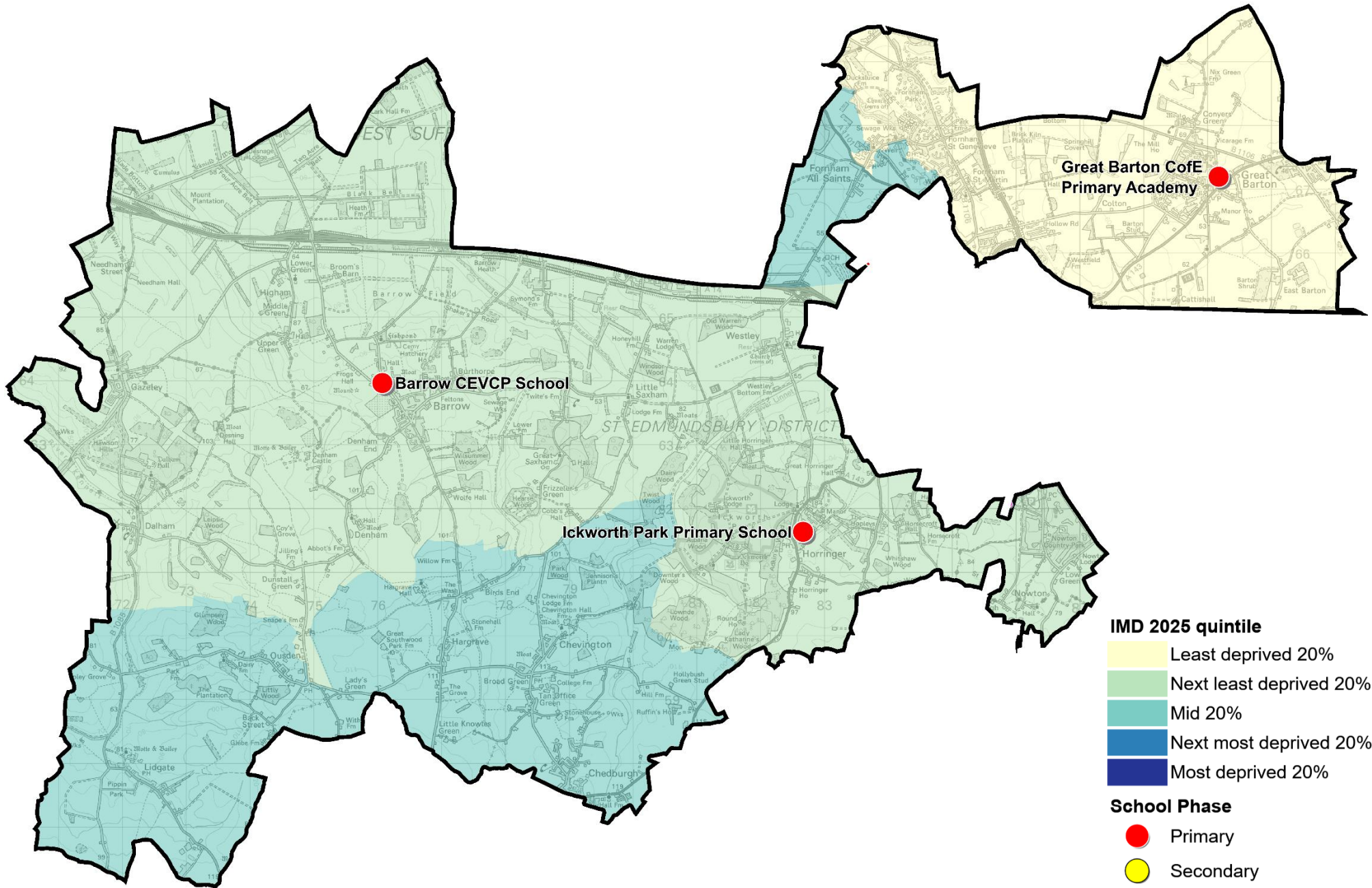
The IMD combines a number of indicators, chosen to cover a range of economic, social and housing issues, into a single deprivation score for each small area in England. This allows each area to be ranked relative to one another according to their level of deprivation. Small areas (Lower Super Output Areas, average population 1,700) are most commonly described as being in 1 of 5 quintile bands. The bottom quintile represents the 20% of areas that are the most deprived in England; these are shaded pale yellow on the map. The top quintile represents the least deprived areas in England and is shaded dark blue.

The Index is widely used to analyse patterns of deprivation, identify areas that would benefit from special initiatives or programmes and as a tool to determine eligibility for specific funding streams.

The chart below shows the percentage of the population of the division that live in areas ranked among each of the five quintiles of deprivation, alongside the district, county and England comparators.



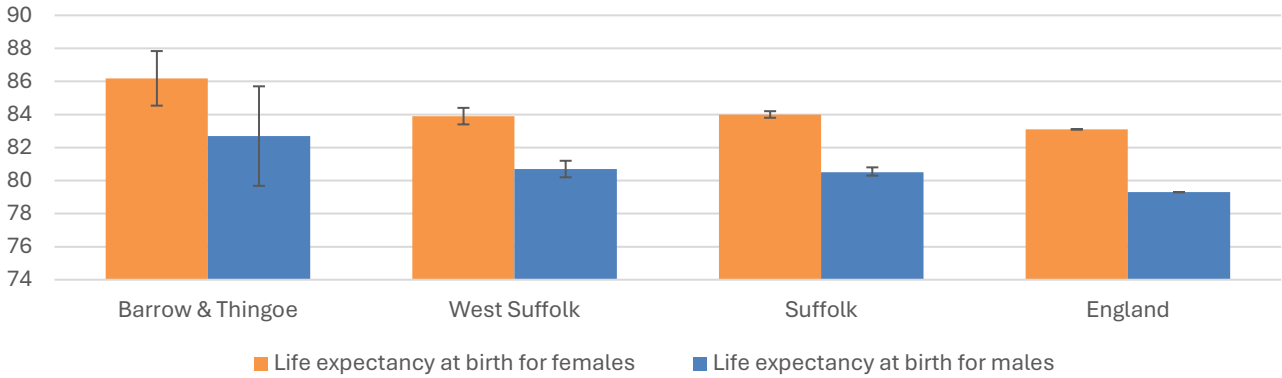
- The 2025 IMD shows that deprivation levels in Barrow and Thingoe are low to moderate and are split across three of the five quintiles.
- Almost 80% of the population of Barrow and Thingoe live in areas that are ranked among the least deprived 40% in England, with a third in the least deprived quintile, and 45% in the next least deprived.
- The remaining part of the division falls in the mid quintile.
- See the map overleaf for the distribution of IMD 2025 results across the division.



Health

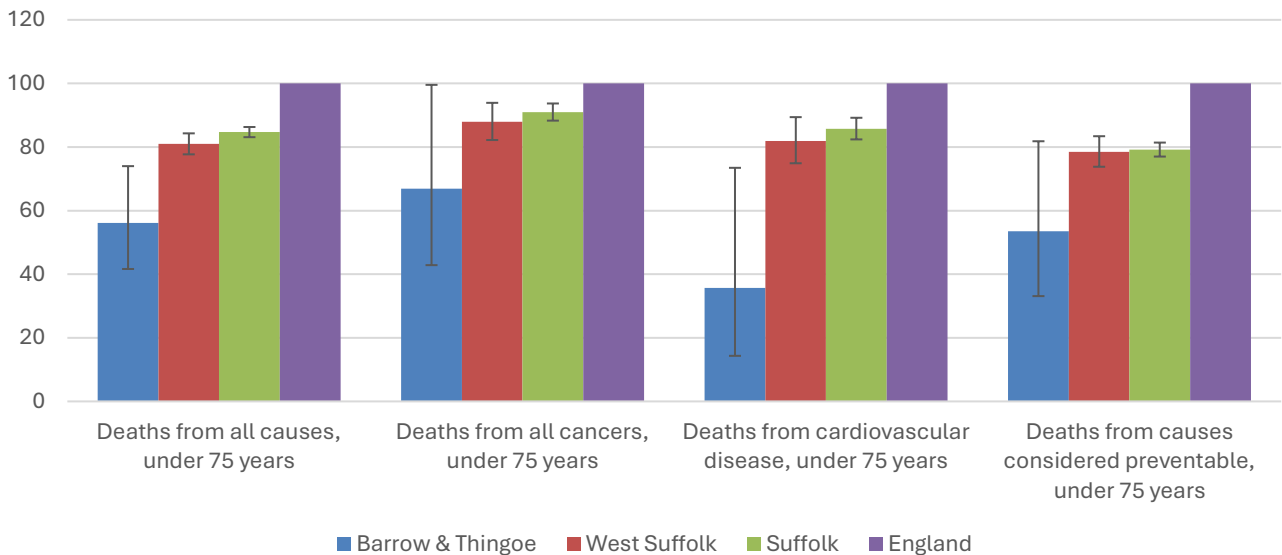
The local data used here is based on relatively small numbers. The confidence limits provide an indication of the reliability of the data. The 95% confidence intervals utilised on the chart provide a range within which there is 95% chance of the true result lying.

Life expectancy at birth



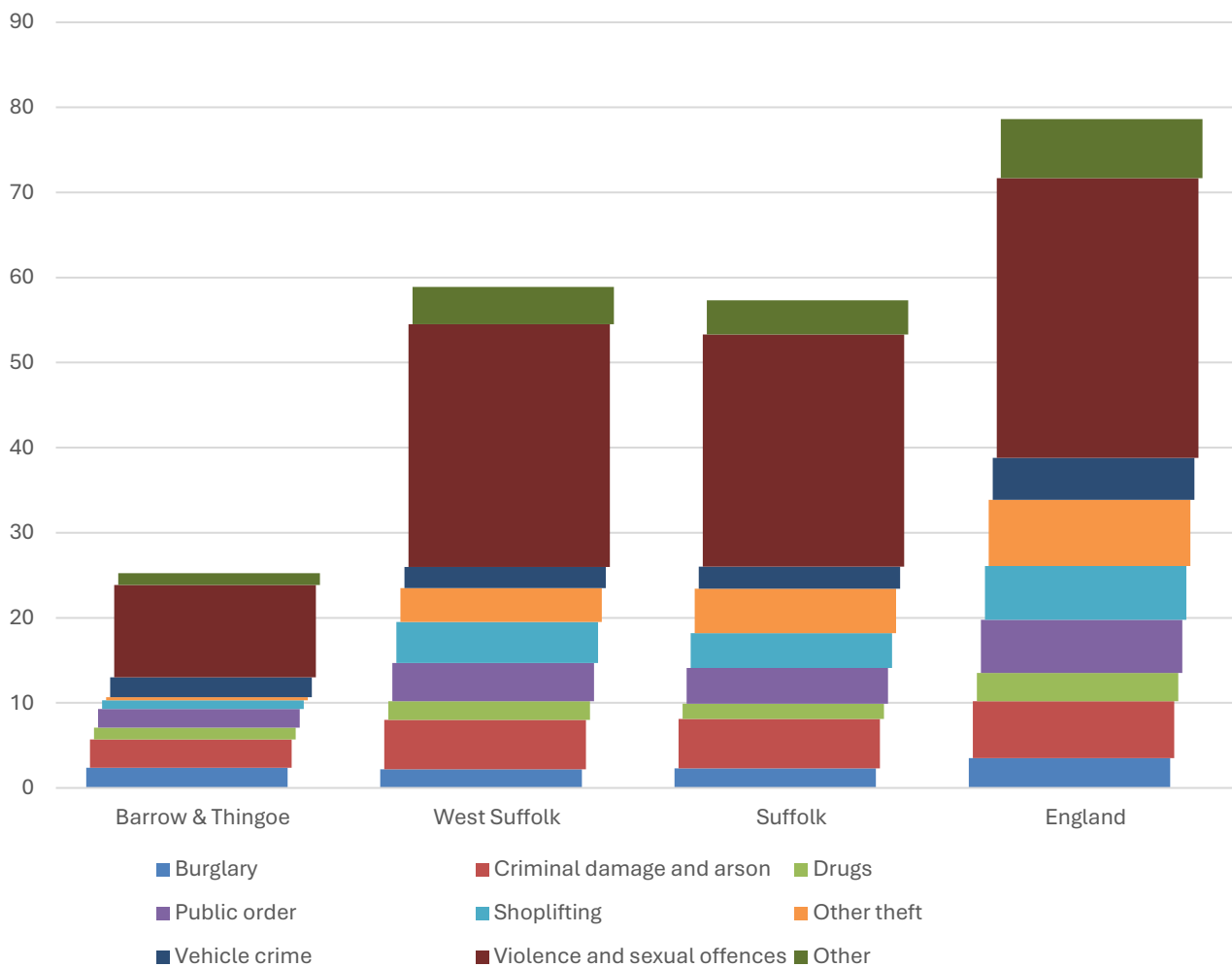
- The latest life expectancy at birth estimates for Barrow and Thingoe are 86.2 for females (the England figure is 83.1), and 82.7 for males (compared to 79.3 nationally).
- Life expectancy for both males and females in the division are statistically significantly higher than the England figures.

Deaths, under 75 years, standardised mortality ratio



- Estimated standardised mortality ratios for early deaths from all causes, cancers, cardiovascular disease and causes considered preventable in Barrow and Thingoe are below 100, indicating that deaths in under 75s due to these causes are lower than in England.
- Confidence intervals around these estimates are wide for local data, but the SMRs for deaths from all of the causes shown here are statistically significantly lower in the division than in England.
- The standardised mortality ratio data shown here means that for every 100 early deaths from all causes across England as a whole, there are an estimated 56 comparable deaths in Barrow and Thingoe.

Crime & Community Safety



- Crime levels in Barrow and Thingoe are very low compared to both the district and county rates.
- In the year to the end of January 2026, there were 25 recorded crimes per 1,000 residents in the division, compared to 59 in West Suffolk, and 57 countywide.
- All types of crime occur at a lower rate in the division than the district and county average with the exception of burglaries, which are slightly more common per head of population in Barrow and Thingoe than in the comparator areas.
- By far the most common type of crime recorded during this period was violence and sexual offences, which accounted for more than 40% of all recorded crimes in the division.

Additional Information

Parishes in Division

Barrow

Chedburgh

Chevington

Dalham

Denham

Fornham All Saints

Fornham St. Genevieve

Fornham St. Martin

Gazeley

Great Barton

Hargrave

Higham

Horringer

Ickworth

Lidgate

Nowton

Ousden

The Saxhams

Westley

Data sources

Category	Indicator	Source
Demographic Profile	Quinary population table 2024	ONS 2024 mid-year population estimates
	Population pyramid 2024	ONS 2024 mid-year population estimates
	Ethnicity 2021	ONS 2021 Census
Economy	Employment by broad industrial sector 2024	ONS Business Register and Employment Survey via NOMIS
Labour market	Claimant count: The number of people claiming Jobseeker's Allowance plus those who claim Universal Credit who are out of work (% 16-64 population) January 2021-February 2026	DWP via NOMIS
Education	School information and attainment 2023-2025	Suffolk County Council CYP iHub
	% 16-17-year-olds NEET (Not in Employment, Education or Training) March 2021 to February 2026	Suffolk County Council CYP iHub via the Suffolk Observatory
Deprivation	Index of Multiple Deprivation 2025	Ministry of Housing, Communities and Local Government
Health	Life expectancy at birth 2016-2020 (2018-2020 for comparator areas)	Office for Health Improvement and Disparities
Health	Standardised mortality ratio for deaths from all causes, cancer, cardiovascular disease, and from causes considered preventable (under 75 years), 2016-2020 (2019-2023 for comparator areas). The standardised mortality ratio is the ratio of observed deaths in the study group to expected deaths in the general population	Office for Health Improvement and Disparities
Community Safety	Recorded crime rate per 1,000 resident population February 2025 to January 2026	Data.police.uk via the Suffolk Observatory

For more data and information about Barrow and Thingoe Electoral Division, see the Suffolk Observatory www.suffolkobservatory.info

