

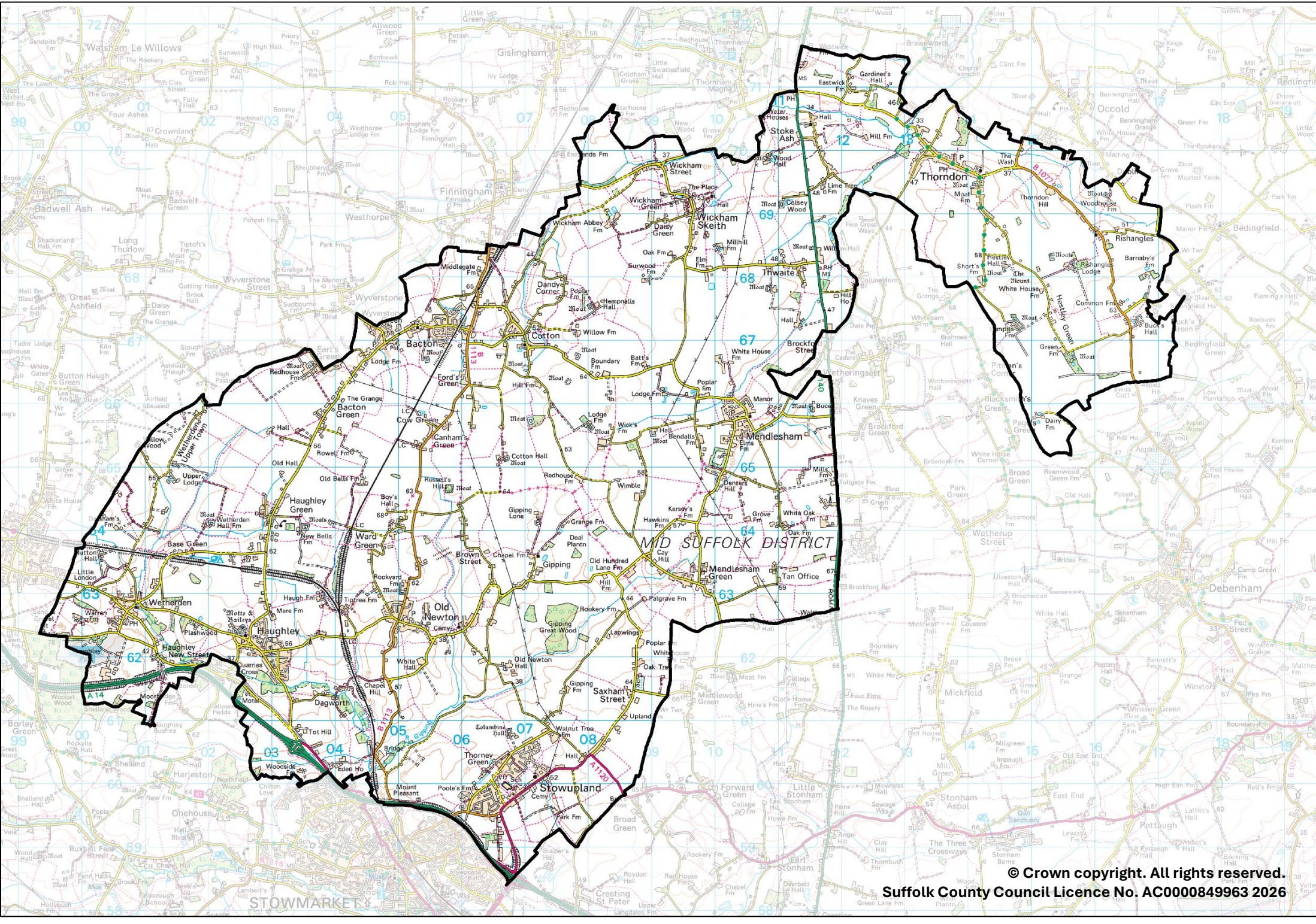
Upper Gipping

County Electoral Division profile

May 2026

This division comprises Haughley, Stowupland & Wetherden Ward in its entirety, and parts of Bacton, Gislingham, Mendlesham, and Palgrave Wards





© Crown copyright. All rights reserved.
Suffolk County Council Licence No. AC000849963 2026

Contents

- Demographic Profile: Age & Ethnicity
- Economy and Labour Market
- Schools & NEET
- Index of Multiple Deprivation
- Health
- Crime & Community Safety
- Additional Information
- Data Sources

Electoral Division Profiles: an introduction

These profiles have been produced to support elected members, constituents and other interested parties in understanding the demographic, economic, social and educational profile of their neighbourhoods. We have used the latest data available at the time of publication.

Much more data is available from national and local sources than is captured here, but it is hoped that the profile will be a useful starting point for discussion, where local knowledge and experience can be used to flesh out and illuminate the information presented here.

The profile can be used to help look at some fundamental questions e.g.

- Does the age profile of the population match or differ from the national profile?
- Is there evidence of the ageing profile of the county in all the wards in the Division or just some?
- How diverse is the community in terms of ethnicity?
- What is the impact of deprivation on families and residents?
- Does there seem to be a link between deprivation and school performance?
- What is the breakdown of employment sectors in the area?
- Is it a relatively healthy area compared to the rest of the district or county?
- What sort of crime is prevalent in the community?

A vast amount of additional data is available on the **Suffolk Observatory**

www.suffolkobservatory.info

The Suffolk Observatory is a free online resource that contains all Suffolk's vital statistics; it is the one-stop-shop for information and intelligence about Suffolk. Through data, reports and maps, the Suffolk Observatory provides a comprehensive picture of the County. It is a great source for useful facts and figures that can be used for writing reports and presentations, informing strategic and business planning, preparing funding applications or supporting academic research. Data is presented around the key themes of population, children and young people, health and social care, housing, crime and community safety, deprivation, economy and employment and environment. All areas of the county are covered, right down to district, electoral division, ward and parish level, with information easily accessible in a variety of formats. You can also build your own reports for custom areas.

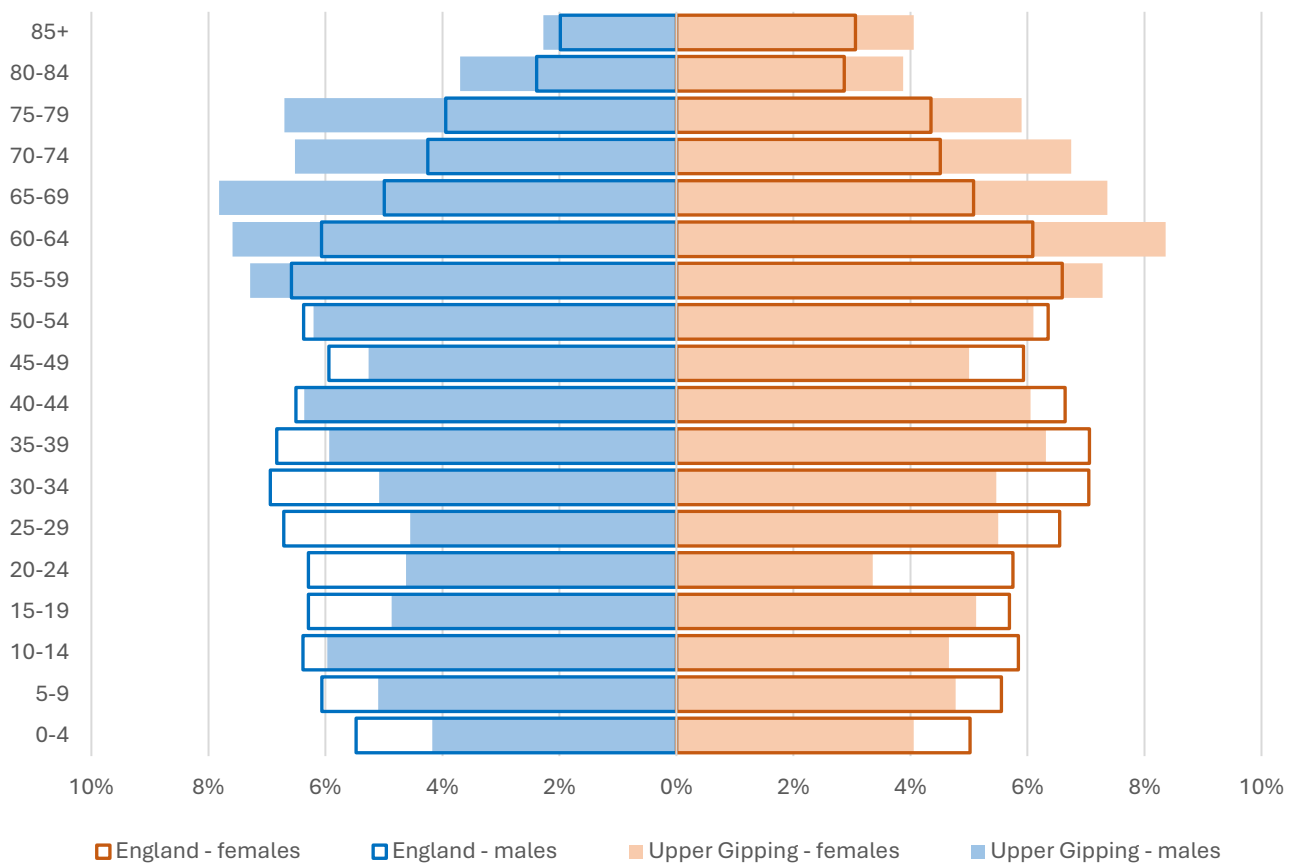
Technical Notes:

1. Where electoral divisions do not exactly match the boundaries at which the data is available (e.g. ward, Output Area or Lower Super Output Area), we have adopted a "best-fit" approach to produce a dataset.
2. District, county and national level data is provided where possible to provide a context for comparisons.

Demographic Profile - Age

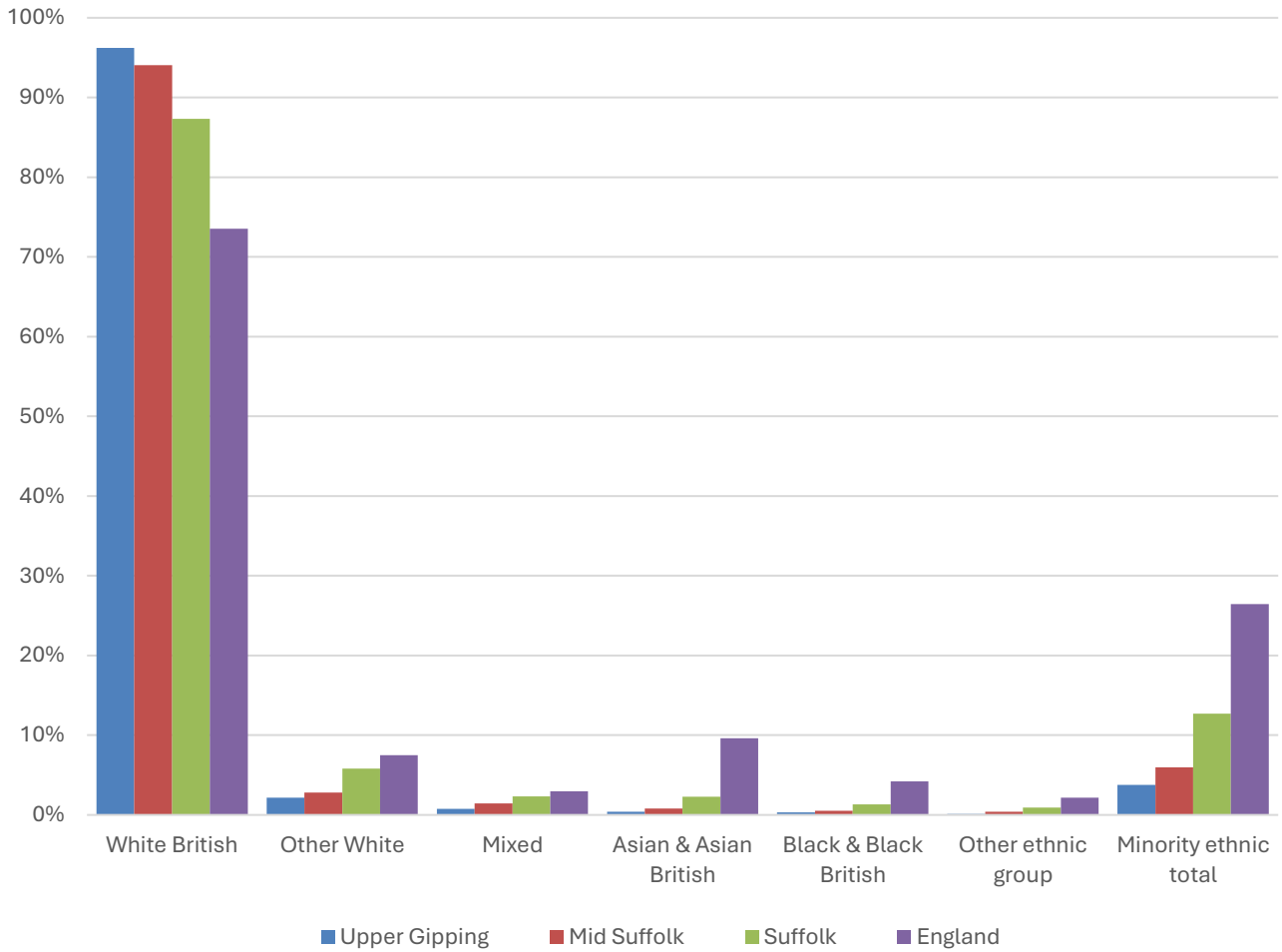
In mid-2024, the estimated population of Upper Gipping stood at 11,643, an increase of 15.7% over the past decade. The age structure of the component wards and the division as a whole is set out below.

	Upper Gipping Division	Haughley, Stowupland & Wetherden Ward	Mendlesham Ward	Bacton Ward	Palgrave Ward	Gislingham Ward
All Ages	11,643	6,632	2,339	1,920	414	338
0-4	479	328	100	40	5	6
5-9	574	346	125	72	14	17
10-14	616	366	118	88	21	23
15-19	582	323	126	94	27	12
20-24	462	260	82	87	19	14
25-29	587	376	118	67	12	14
30-34	615	384	122	89	14	6
35-39	714	416	146	110	22	20
40-44	722	440	140	99	20	23
45-49	597	341	134	86	22	14
50-54	716	397	120	146	25	28
55-59	848	491	174	117	49	17
60-64	930	509	148	186	55	32
65-69	883	451	187	189	23	33
70-74	773	392	174	144	33	30
75-79	732	380	167	144	22	19
80-84	441	236	80	98	15	12
85+	372	196	78	64	16	18



- The age pyramid for Upper Gipping division shows a higher proportion of people aged 55 and over than in England as a whole.
- The most common age group in the division is 60-64-year-olds (8% of the local population), followed by 65-69-year-olds (7.6%), and 55-59-year-olds (7.3%).
- More than a quarter (27.5%) of the population of Upper Gipping is of retirement age. The England figure is 18.7%.
- All age groups under 50 make up a smaller proportion of the population of the division than they do nationally, but there is a particularly low proportion of adults aged between 20 and 34 in the division.

Demographic Profile - Ethnicity

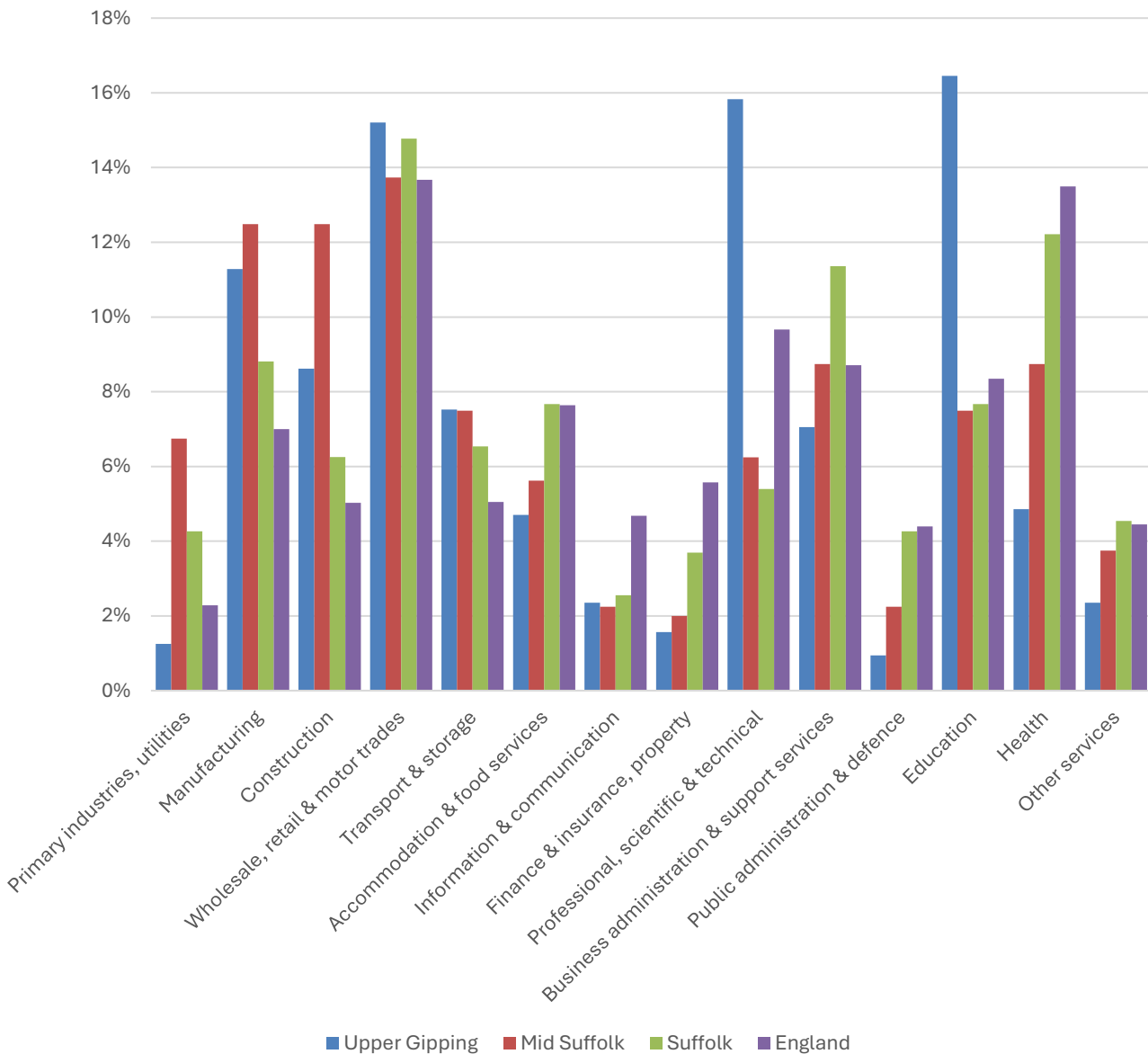


- According to the latest data (2021 Census), 96.2% of the population of Upper Gipping is White British.
- There were 396 (3.8%) residents from minority ethnic groups in the division, around a third of the proportion in Suffolk overall, and a tenth of the England figure.
- Upper Gipping also has a less ethnically diverse population than Mid Suffolk overall.

	All people		White British		Other White		Mixed		Asian and Asian British		Black and Black British		Other Ethnic Group		Total minority ethnic population	
	Count	%	Count	%	Count	%	Count	%	Count	%	Count	%	Count	%	Count	%
Upper Gipping	10,492		10,096	96.2	228	2.2	81	0.8	40	0.4	35	0.3	12	0.1	396	3.8
Mid Suffolk	102,701		96,581	94.0	2,882	2.8	1,463	1.4	821	0.8	553	0.5	401	0.4	6,120	6.0
Suffolk	760,687		664,205	87.3	44,066	5.8	17,807	2.3	17,483	2.3	10,168	1.3	6,958	0.9	96,482	12.7
England				73.5		7.5		3.0		9.6		4.2		2.2		26.5

Economy

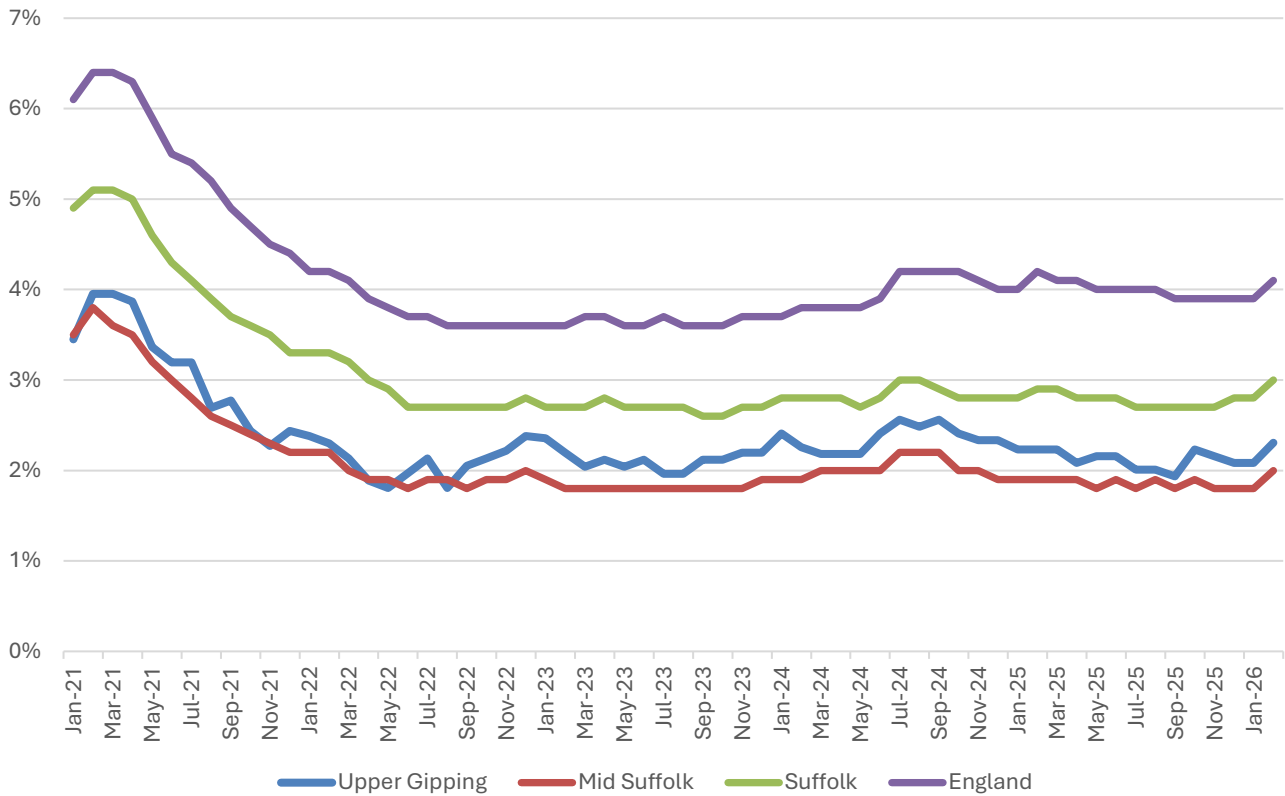
There are around 3,200 people employed in Upper Gipping.



- Education (16.5% of local jobs), professional, scientific and technical activities (15.8%), and wholesale, retail and motor trades (15.2%) are the three largest sectors in Upper Gipping in terms of employment.
- The former two sectors particularly stand out as being of a much larger relative importance in the division compared to Mid Suffolk, Suffolk or England.
- Manufacturing and construction are also important sectors in the division.

Labour Market

Out-of-work benefit claimant rate



- In February 2026 (the latest available data), 2.3% of 16-64-year-olds were claiming out-of-work benefits in the division.
- In common with Mid Suffolk, Suffolk and England as a whole, Upper Gipping saw a steady decline in the proportion of the working age population claiming out-of-work benefits during 2021 and into 2022 following a peak during the COVID-19 pandemic.
- Since then, the claimant rate has been fairly stable at around 2-2.5%.
- The claimant rate in the division tends to be slightly above the Mid Suffolk figure, but below the county and national benchmarks.

Schools

School Information

Schools in the Division

Name	Phase	Academy Status	No. pupils	Average cohort size at:			
				Foundation Stage (age 4-7)	KS2 (age 7-11)	KS4 (age 14-16)	KS5 (age 16-18)
Bacton Primary School	Primary	AC	111	13	20		
Crawford's CofE Primary School	Primary	AC	90	12	10		
Freeman Community Primary School	Primary	AC	197	29	29		
Mendlesham Primary School	Primary	AC	100	15	17		
Old Newton CofE Primary School	Primary	AC	70	14	14		
Thorndon CofE School	Primary	AC	58	5	11		
Stowupland High School	Secondary	AC	846			178	40

Academy Status key: AS = Academy Sponsored, AC = Academy Converter, LA = LA Maintained, F = Free

Ofsted information

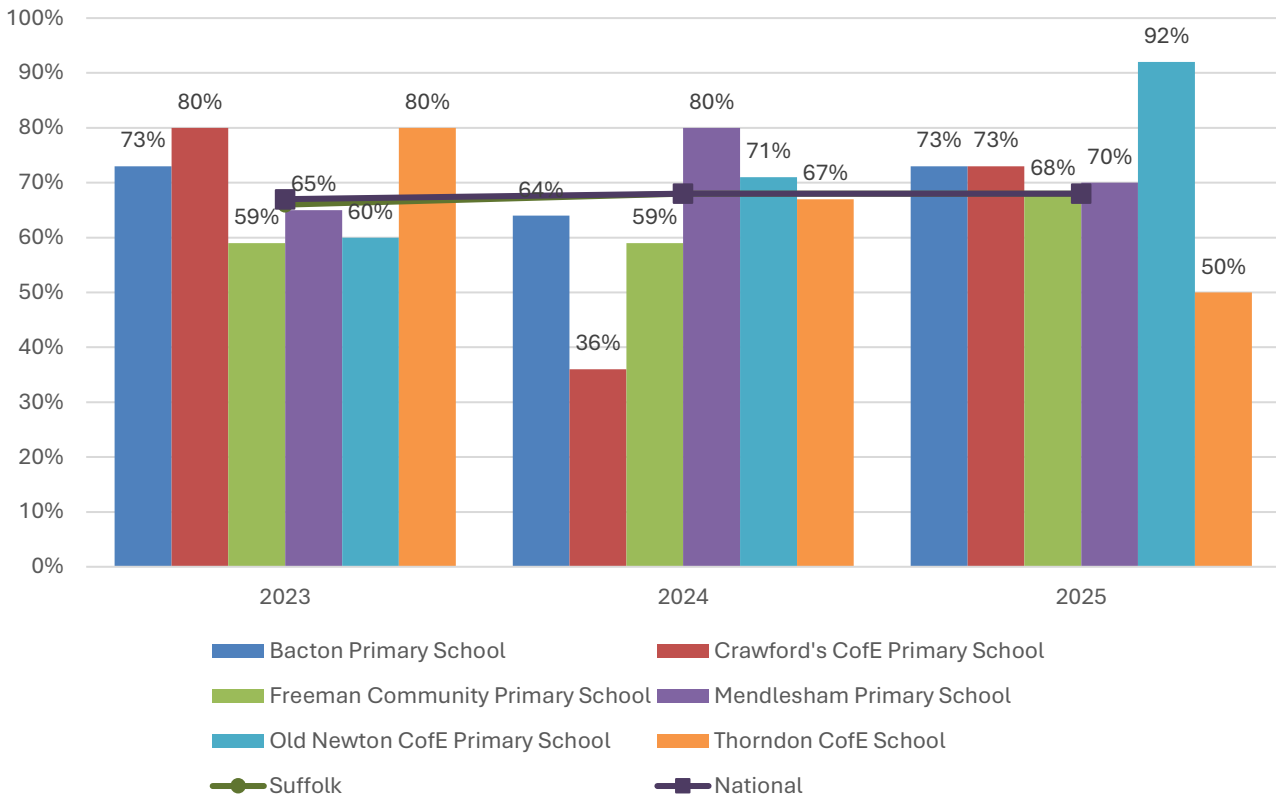
Name	Overall effectiveness	Effectiveness of leadership and management	Behaviour and attitudes	Personal development	Early years provision (if applicable)	Quality of education	Last inspection date
Bacton Primary School	2	2	2	2	2	2	06/06/2023
Crawford's CofE Primary School	2	2	2	2	2	2	24/01/2023
Freeman Community Primary School	5	2	2	2	2	2	24/09/2024
Mendlesham Primary School	5	2	2	2	2	2	19/11/2024
Old Newton CofE Primary School	5	2	2	2	2	2	03/12/2024
Thorndon CofE School	3	3	9	9	2	9	19/06/2019
Stowupland High School	3	3	3	3	9	3	10/01/2023

Code	Judgement	Code	Judgement
0	Insufficient evidence	SM	Special measures
1	Outstanding	8	Does not apply
2	Good	9	No judgement
3	Requires improvement	Null	No data available
4	Inadequate	Not judged	Not judged
SWK	Serious weaknesses	5	No overall grade

School Attainment

Foundation Stage Profile (reception)

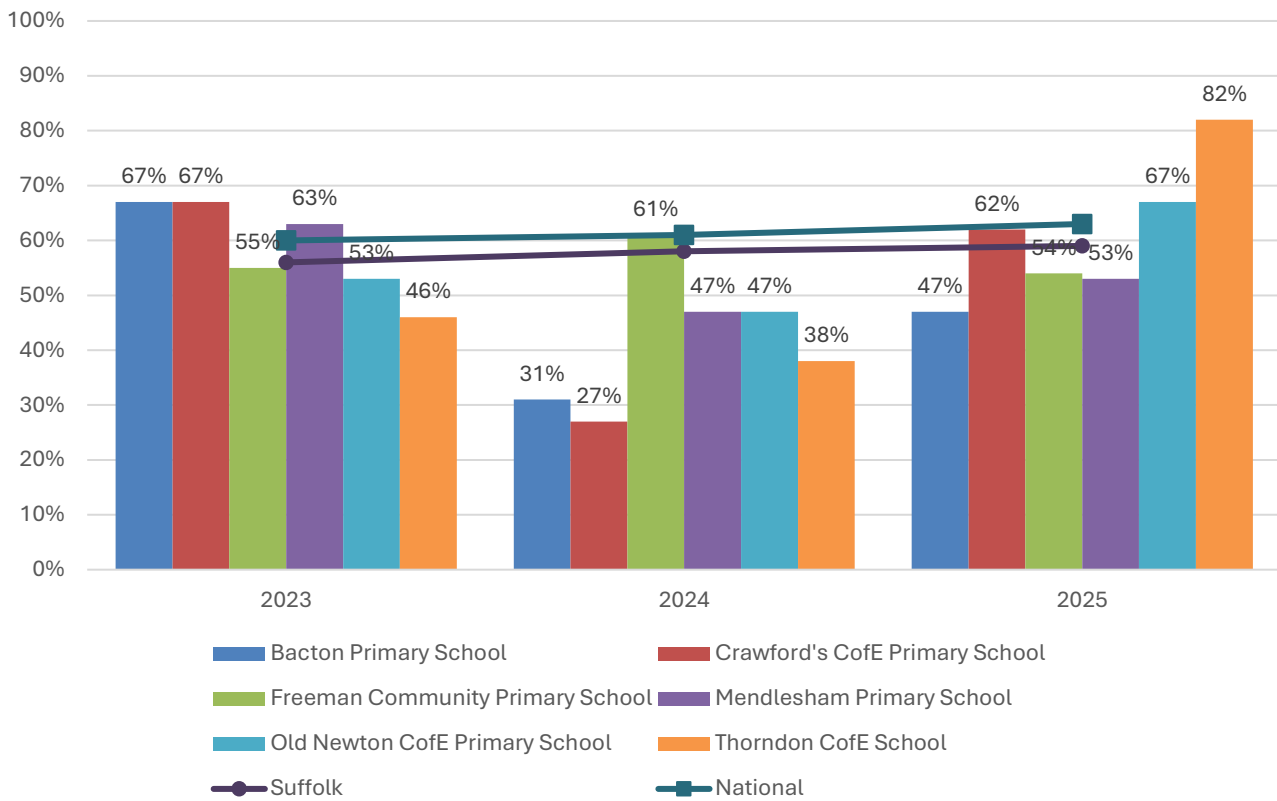
% pupils achieving Good Level of Development (GLD)



- In 2025, the percentage of pupils to achieve a Good Level of Development (GLD) at Foundation Stage (FS) was at or above the national benchmark at five of the six schools in Upper Gipping.
- Only Thorndon Church of England School recorded FS attainment levels below the England figure in 2025.
- No school has seen consistently above average FS attainment throughout the last three years.
- It should be noted that cohort sizes at these schools at Foundation Stage in particular are small and therefore more subject to significant fluctuations in attainment from one year to the next.

Key Stage 2 (age 11)

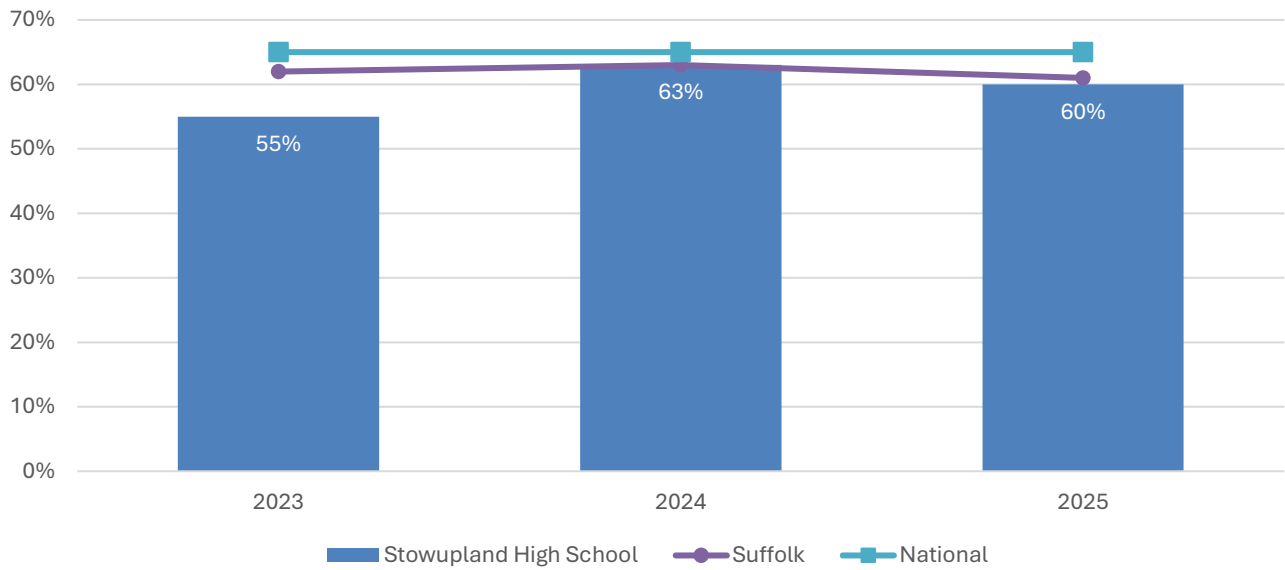
% pupils achieving the Expected Level or better in Reading, Writing and Mathematics



- Key stage 2 attainment at schools in Upper Gipping has been mixed over the last three years, with particularly low outcomes in 2024.
- In 2025, the percentage of pupils to achieve the expected level or better in reading, writing and mathematics at Key Stage 2 was above the England benchmark at only two of the six schools in the division, namely Old Newton Church of England Primary School and Thorndon Church of England Primary School.
- In 2024, KS2 attainment met the national figure at Freeman Community Primary School, but was below this level at all other schools in Upper Gipping.

Key Stage 4 (GCSE) (age 16)

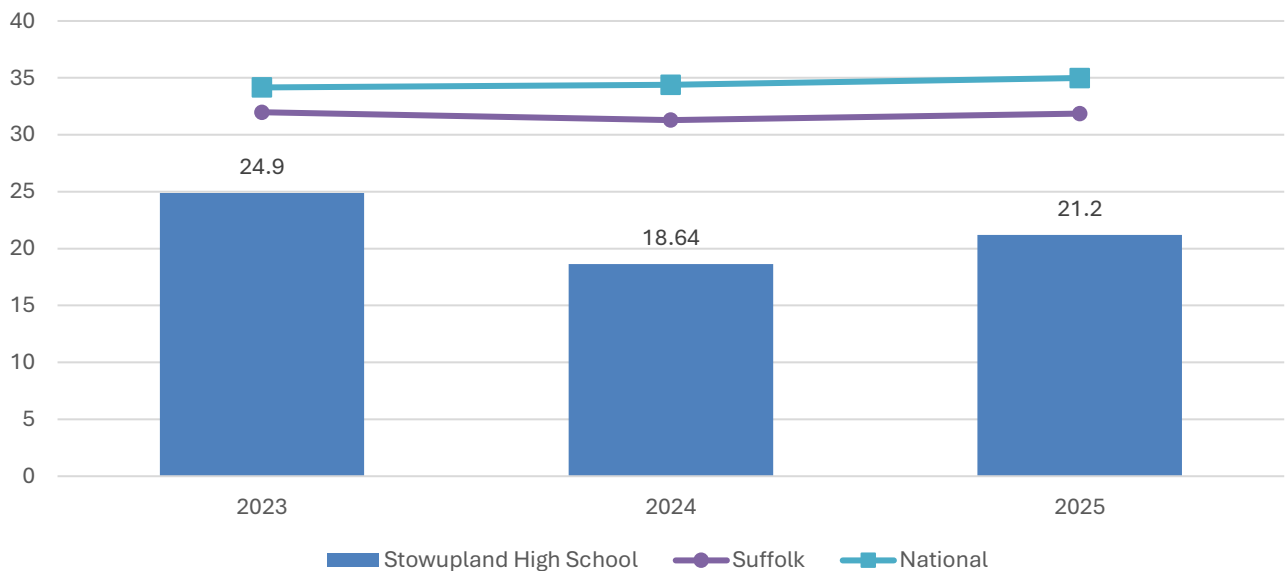
% pupils achieving level 4-9 in English and Mathematics



- Key Stage 4 attainment at Stowupland High School remained below the national benchmark over the last three years.
- The percentage of pupils to achieve level 4-9 in English and mathematics at the school was 60% in 2025, five percentage points adrift of the England figure. In 2024, the gap was even narrower at two percentage points.

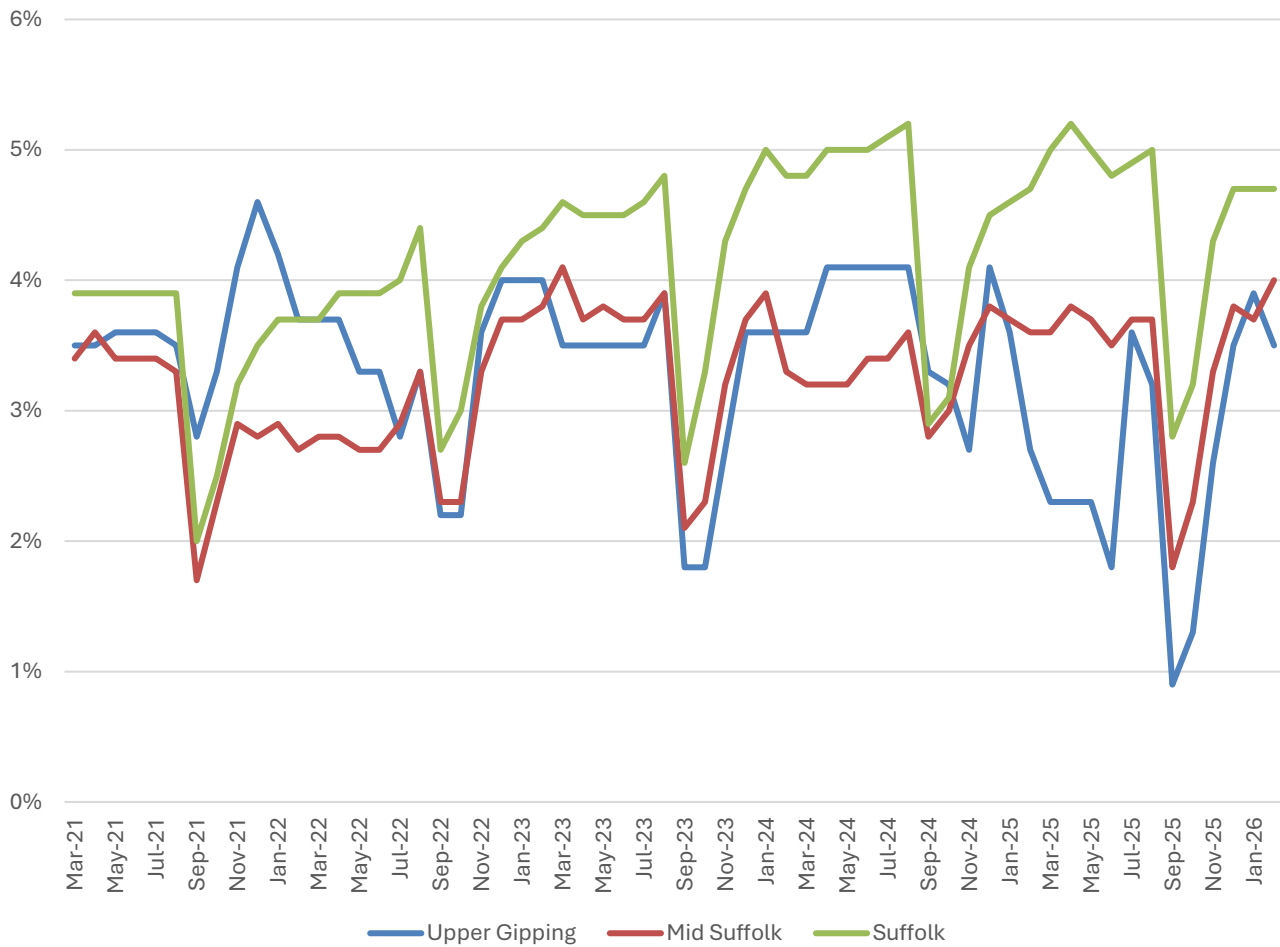
Key Stage 5 (A level) (age 18)

Average A Level Points per entry



- Key Stage 5 attainment at Stowupland High School has been below the national level in each of the last three years.
- In 2025, the average A Level points per entry was 21.2 at Stowupland High School, compared to 34.99 nationally and 31.86 in Suffolk.

NEET % (Not in Education, Employment or Training)



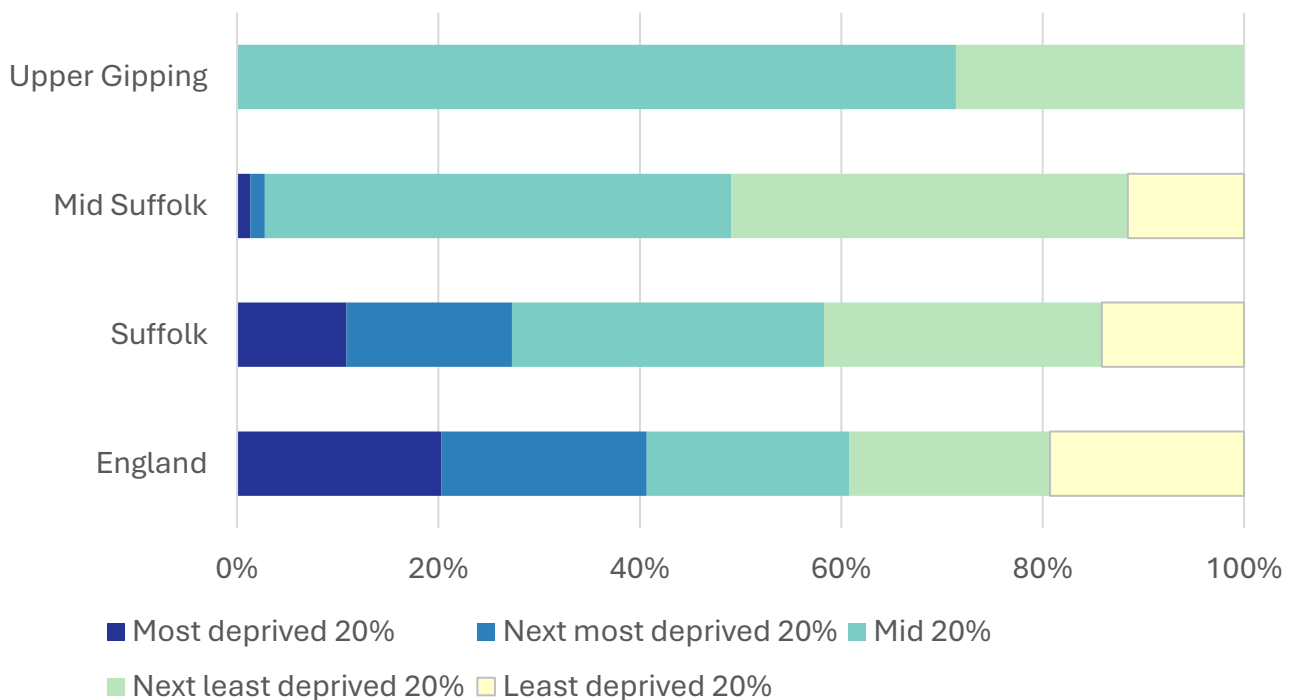
- In February 2026, 3.5% of 16-17-year-olds in Upper Gipping were classified as NEET (not in education, employment or training).
- NEET levels fluctuate considerably according to the time of year and due to small numbers of 16-17-year-olds in the division, typically being at their lowest at the beginning of a new school year.
- In Upper Gipping, the proportion of children who are NEET is generally close to the district figure, but below the rate across Suffolk as a whole.

Index of Multiple Deprivation (IMD) 2025 (see map overleaf)

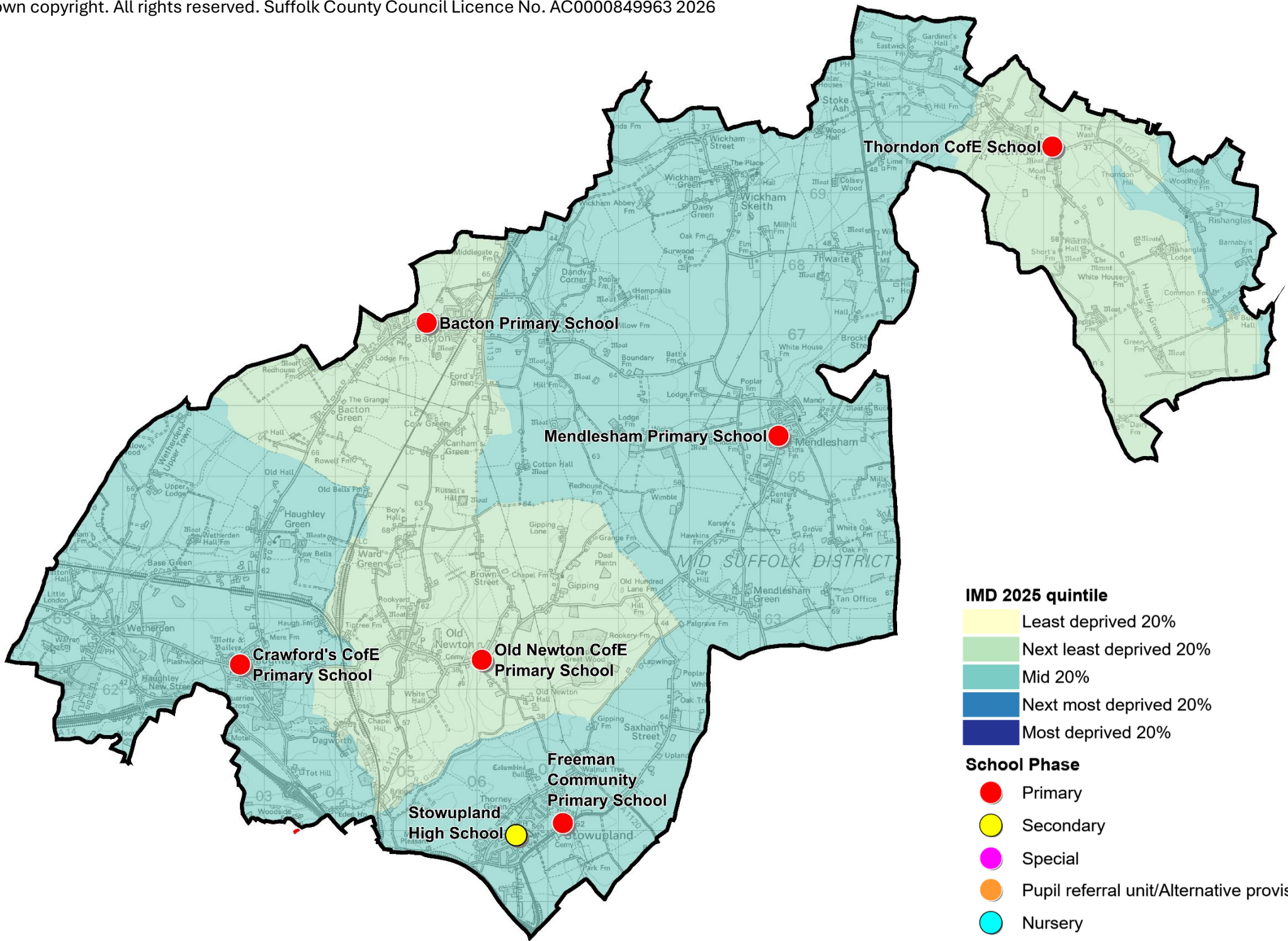
The IMD combines a number of indicators, chosen to cover a range of economic, social and housing issues, into a single deprivation score for each small area in England. This allows each area to be ranked relative to one another according to their level of deprivation. Small areas (Lower Super Output Areas, average population 1,700) are most commonly described as being in 1 of 5 quintile bands. The bottom quintile represents the 20% of areas that are the most deprived in England; these are shaded pale yellow on the map. The top quintile represents the least deprived areas in England and is shaded dark blue.

The Index is widely used to analyse patterns of deprivation, identify areas that would benefit from special initiatives or programmes and as a tool to determine eligibility for specific funding streams.

The chart below shows the percentage of the population of the division that live in areas ranked among each of the five quintiles of deprivation, alongside the district, county and England comparators.



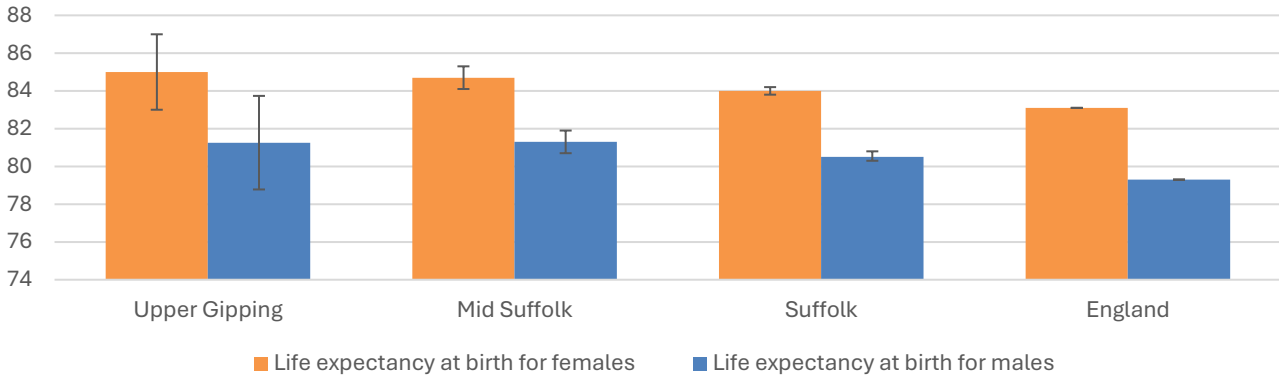
- The 2025 IMD shows that deprivation levels in Upper Gipping are largely uniform, and are moderate to low.
- The division's population is split between the middle quintile of deprivation (71% of residents), and the second least deprived quintile in England (i.e. the 20-40% least deprived) (29%).
- See the map overleaf for the distribution of IMD 2025 results across the division.



Health

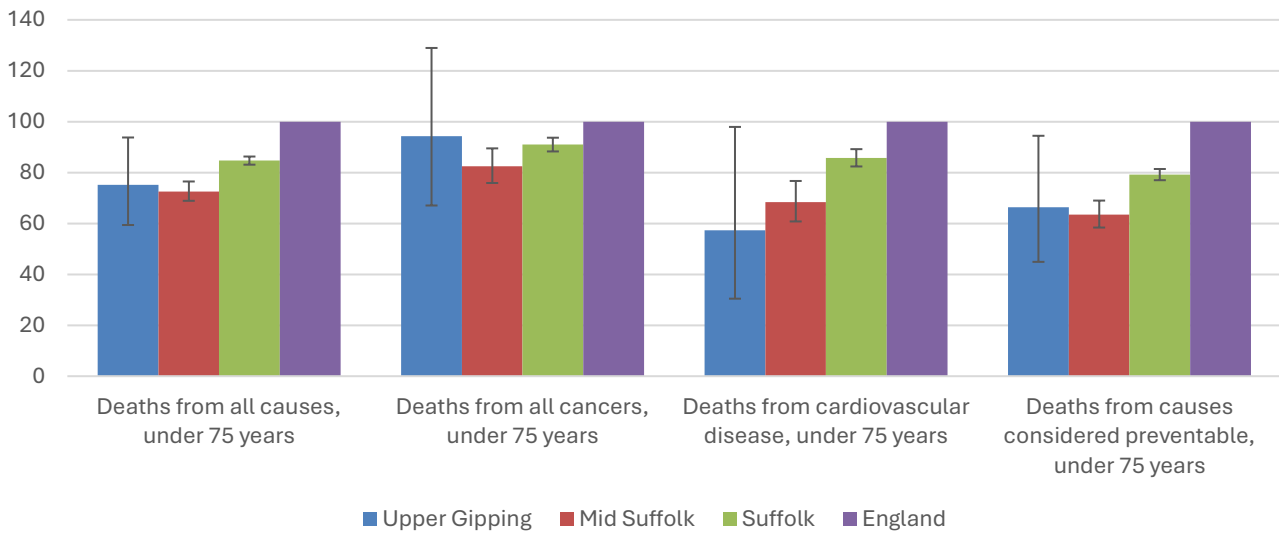
The local data used here is based on relatively small numbers. The confidence limits provide an indication of the reliability of the data. The 95% confidence intervals utilised on the chart provide a range within which there is 95% chance of the true result lying.

Life expectancy at birth



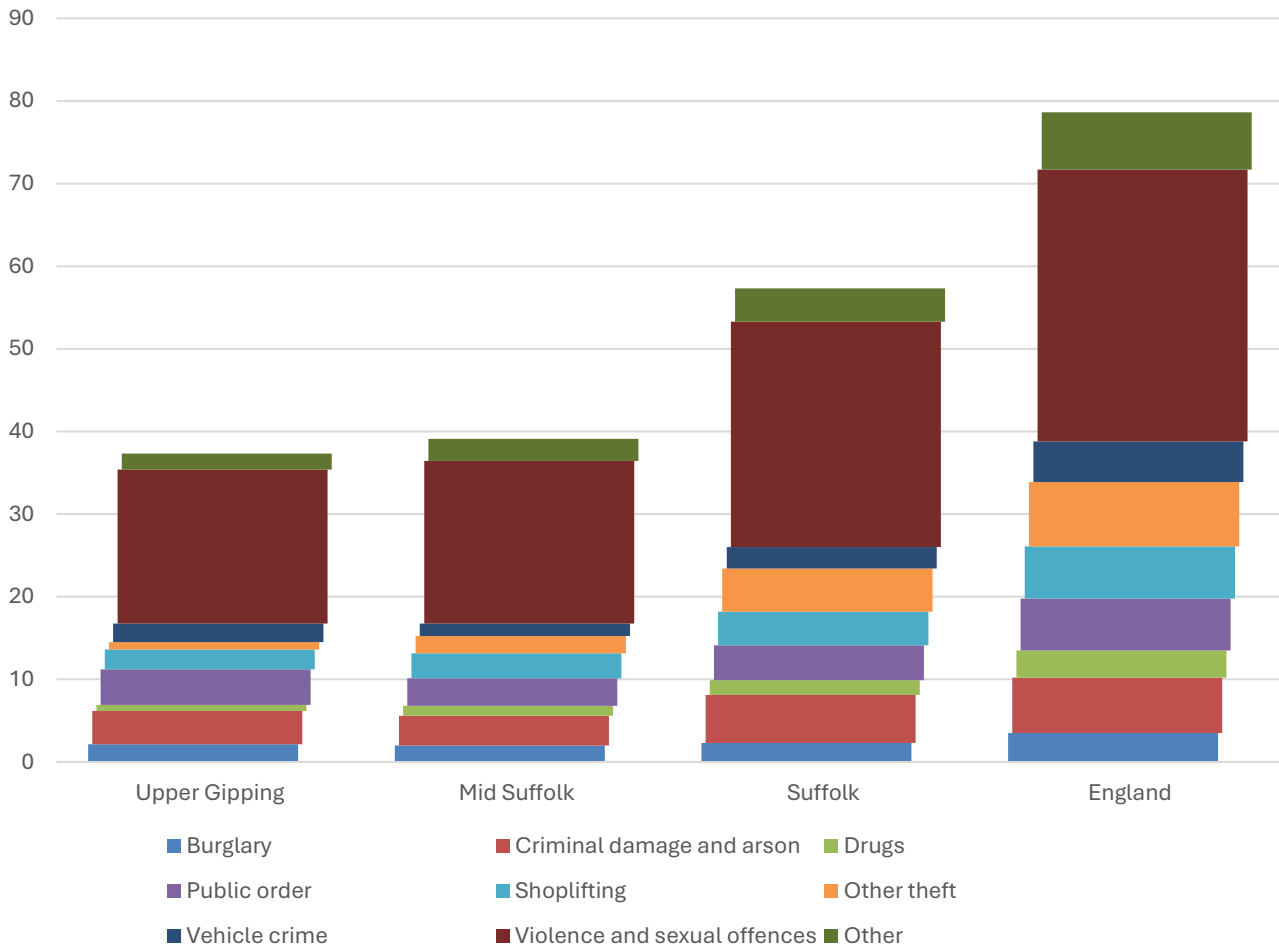
- The latest life expectancy at birth estimates for Upper Gipping are 85 for females (the England figure is 83.1), and 81.3 for males (compared to 79.3 nationally).
- Life expectancy for both males and females in the division are statistically similar to the England figures.

Deaths, under 75 years, standardised mortality ratio



- Estimated standardised mortality ratios for early deaths from all causes, cancers, cardiovascular disease and causes considered preventable in Upper Gipping are below 100, indicating that deaths in under 75s due to these causes are lower than in England.
- Confidence intervals around these estimates are wide for local data, but the SMRs for deaths from all causes, cardiovascular disease and from causes considered preventable are statistically significantly lower than England.
- The standardised mortality ratio data shown here means that for every 100 early deaths from all causes across England as a whole, there are an estimated 75 comparable deaths in Upper Gipping.

Crime & Community Safety



- Crime levels in Upper Gipping are relatively low compared to the county average, and similar to the Mid Suffolk rate.
- In the year to the end of January 2026, there were 37 recorded crimes per 1,000 residents in the division, compared to 39 in Mid Suffolk, and 57 countywide.
- By far the most common type of crime recorded during this period was violence and sexual offences, which accounted for half of all recorded crimes in the division.

Additional Information

Parishes in Division

Bacton
 Cotton
 Gipping
 Haughley
 Mendlesham
 Old Newton with Dagworth
 Rishangles

Stoke Ash
 Stowupland
 Thorndon
 Thwaite
 Wetherden
 Wickham Skeith

Data sources

Category	Indicator	Source
Demographic Profile	Quinary population table 2024	ONS 2024 mid-year population estimates
	Population pyramid 2024	ONS 2024 mid-year population estimates
	Ethnicity 2021	ONS 2021 Census
Economy	Employment by broad industrial sector 2024	ONS Business Register and Employment Survey via NOMIS
Labour market	Claimant count: The number of people claiming Jobseeker's Allowance plus those who claim Universal Credit who are out of work (% 16-64 population) January 2021-February 2026	DWP via NOMIS
Education	School information and attainment 2023-2025	Suffolk County Council CYP iHub
	% 16-17-year-olds NEET (Not in Employment, Education or Training) March 2021 to February 2026	Suffolk County Council CYP iHub via the Suffolk Observatory
Deprivation	Index of Multiple Deprivation 2025	Ministry of Housing, Communities and Local Government
Health	Life expectancy at birth 2016-2020 (2018-2020 for comparator areas)	Office for Health Improvement and Disparities
Health	Standardised mortality ratio for deaths from all causes, cancer, cardiovascular disease, and from causes considered preventable (under 75 years), 2016-2020 (2019-2023 for comparator areas). The standardised mortality ratio is the ratio of observed deaths in the study group to expected deaths in the general population	Office for Health Improvement and Disparities
Community Safety	Recorded crime rate per 1,000 resident population February 2025 to January 2026	Data.police.uk via the Suffolk Observatory

For more data and information about Upper Gipping Electoral Division, see the Suffolk Observatory www.suffolkobservatory.info

