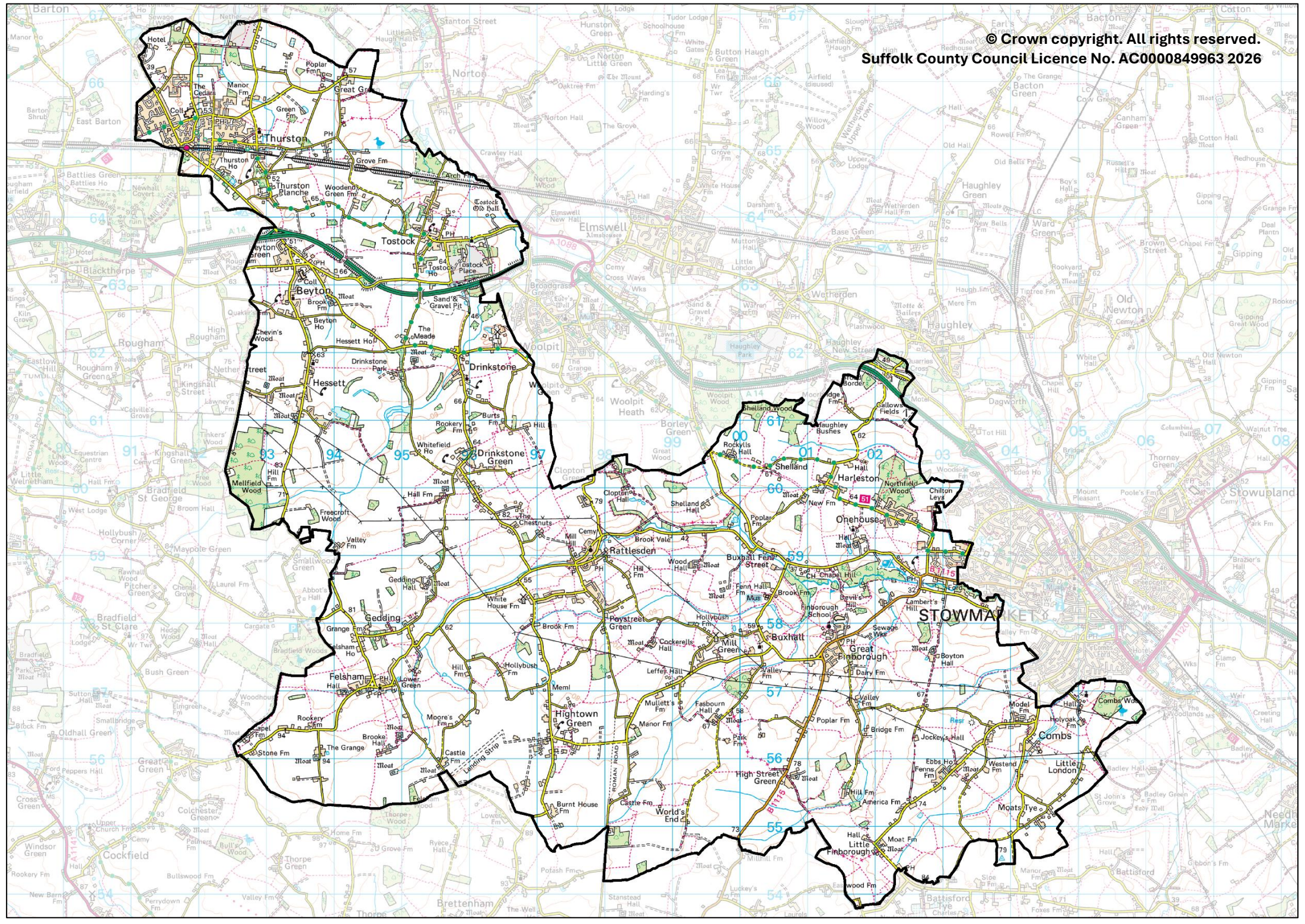


Thedwastre South

County Electoral Division profile
May 2026

This division comprises Onehouse and Rattlesden Wards in their entirety, and part of Thurston Ward





Contents

- Demographic Profile: Age & Ethnicity
- Economy and Labour Market
- Schools & NEET
- Index of Multiple Deprivation
- Health
- Crime & Community Safety
- Additional Information
- Data Sources

Electoral Division Profiles: an introduction

These profiles have been produced to support elected members, constituents and other interested parties in understanding the demographic, economic, social and educational profile of their neighbourhoods. We have used the latest data available at the time of publication.

Much more data is available from national and local sources than is captured here, but it is hoped that the profile will be a useful starting point for discussion, where local knowledge and experience can be used to flesh out and illuminate the information presented here.

The profile can be used to help look at some fundamental questions e.g.

- Does the age profile of the population match or differ from the national profile?
- Is there evidence of the ageing profile of the county in all the wards in the Division or just some?
- How diverse is the community in terms of ethnicity?
- What is the impact of deprivation on families and residents?
- Does there seem to be a link between deprivation and school performance?
- What is the breakdown of employment sectors in the area?
- Is it a relatively healthy area compared to the rest of the district or county?
- What sort of crime is prevalent in the community?

A vast amount of additional data is available on the **Suffolk Observatory**

www.suffolkobservatory.info

The Suffolk Observatory is a free online resource that contains all Suffolk's vital statistics; it is the one-stop-shop for information and intelligence about Suffolk. Through data, reports and maps, the Suffolk Observatory provides a comprehensive picture of the County. It is a great source for useful facts and figures that can be used for writing reports and presentations, informing strategic and business planning, preparing funding applications or supporting academic research. Data is presented around the key themes of population, children and young people, health and social care, housing, crime and community safety, deprivation, economy and employment and environment. All areas of the county are covered, right down to district, electoral division, ward and parish level, with information easily accessible in a variety of formats. You can also build your own reports for custom areas.

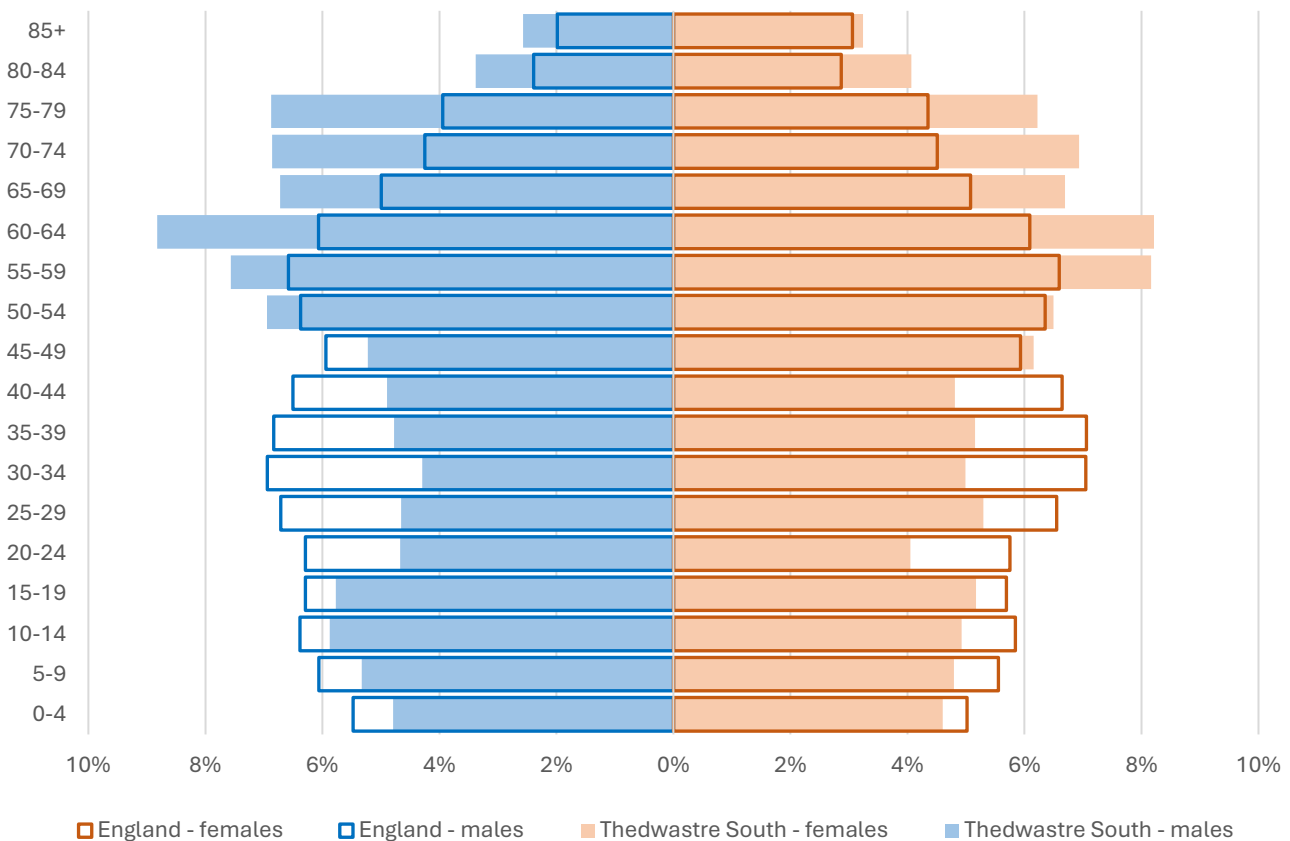
Technical Notes:

1. Where electoral divisions do not exactly match the boundaries at which the data is available (e.g. ward, Output Area or Lower Super Output Area), we have adopted a "best-fit" approach to produce a dataset.
2. District, county and national level data is provided where possible to provide a context for comparisons.

Demographic Profile - Age

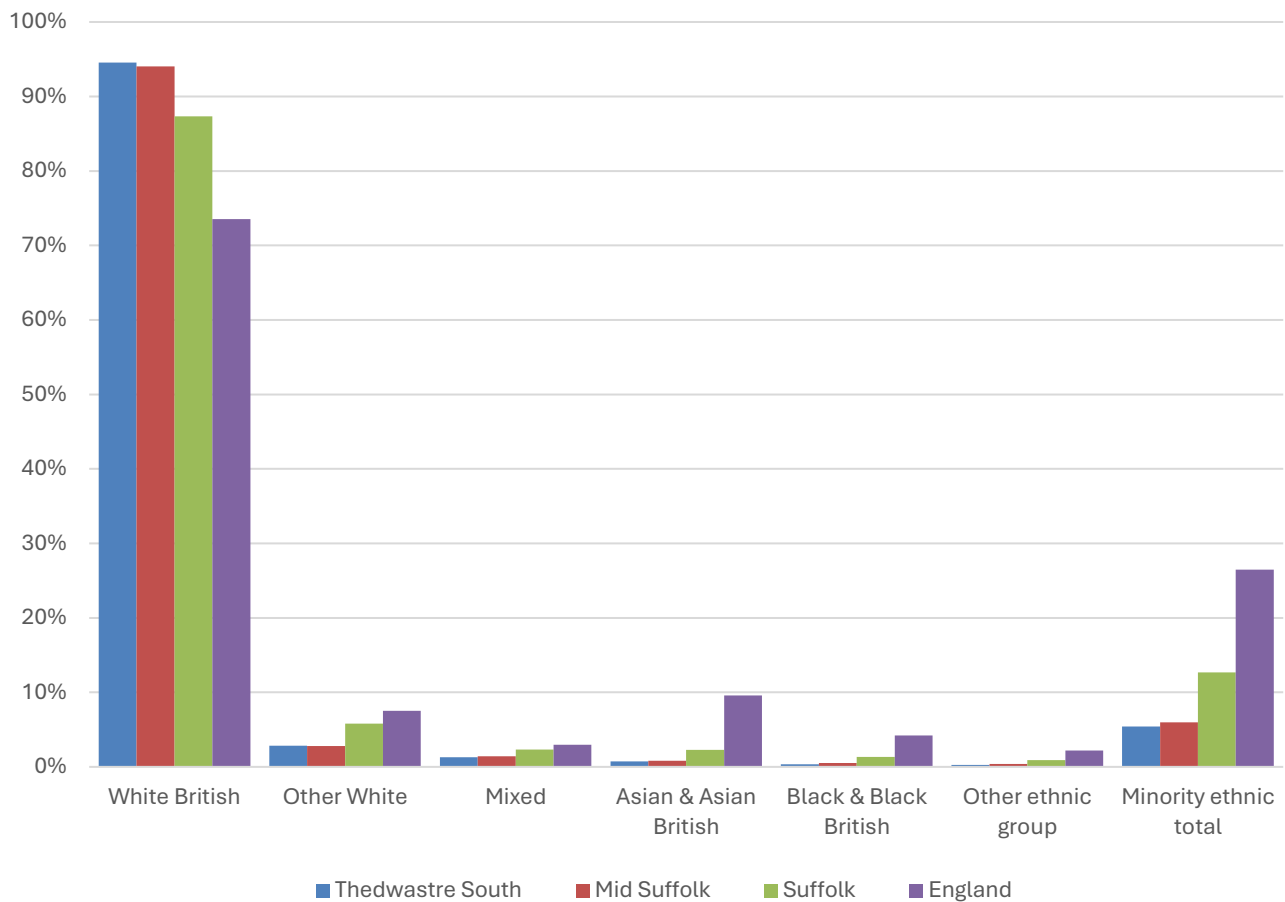
In mid-2024, the estimated population of Thedwastre South stood at 11,974, an increase of 16.7% over the past decade. The age structure of the component wards and the division as a whole is set out below.

	Thedwastre South Division	Thurston Ward	Rattlesden Ward	Onehouse Ward
All Ages	11,974	5,563	3,270	3,141
0-4	562	310	140	112
5-9	605	301	159	145
10-14	645	310	155	180
15-19	654	320	164	170
20-24	521	238	134	149
25-29	597	317	121	159
30-34	557	277	133	147
35-39	595	292	132	171
40-44	581	301	164	116
45-49	683	339	178	166
50-54	804	362	219	223
55-59	943	398	303	242
60-64	1,019	424	317	278
65-69	803	311	247	245
70-74	826	366	244	216
75-79	783	327	259	197
80-84	447	205	119	123
85+	349	165	82	102



- The age pyramid for Thedwastre South division shows a considerably higher proportion of people aged 50 and over than seen in England as a whole.
- The most common age group in the division is 60-64-year-olds (8.5% of the local population), followed by 55-59-year-olds (7.9%), and 70-74-year-olds (6.9%).
- Just over a quarter of the population of Thedwastre South is of retirement age. The England figure is 18.7%.
- There is a particularly low proportion of adults aged between 20 and 44 in the division.

Demographic Profile – Ethnicity

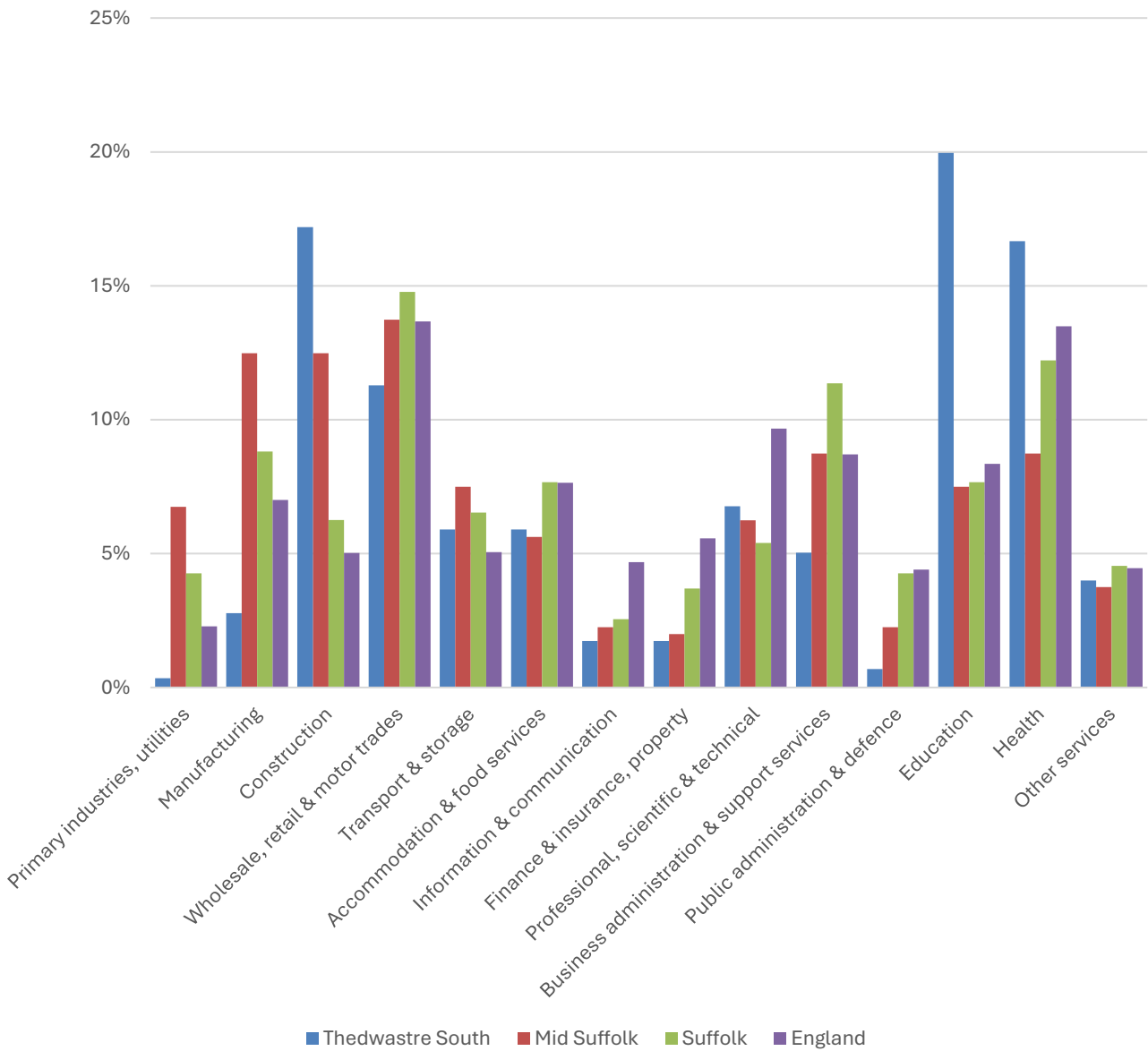


- According to the latest data (2021 Census), 94.6% of the population of Thedwastre South is White British.
- There were 561 (5.4%) residents from minority ethnic groups in the division, less than half of the proportion in Suffolk overall, and about one fifth of the England average.
- Thedwastre South has a similar ethnic diversity profile to Mid Suffolk district as a whole.

	All people		White British		Other White		Mixed		Asian and Asian British		Black and Black British		Other Ethnic Group		Total minority ethnic population	
	Count	Count	%	Count	%	Count	%	Count	%	Count	%	Count	%	Count	%	
Thedwastre South	10,333	9,772	94.6	293	2.8	133	1.3	74	0.7	34	0.3	27	0.3	561	5.4	
Mid Suffolk	102,701	96,581	94.0	2,882	2.8	1,463	1.4	821	0.8	553	0.5	401	0.4	6,120	6.0	
Suffolk	760,687	664,205	87.3	44,066	5.8	17,807	2.3	17,483	2.3	10,168	1.3	6,958	0.9	96,482	12.7	
England			73.5		7.5		3.0		9.6		4.2		2.2		26.5	

Economy

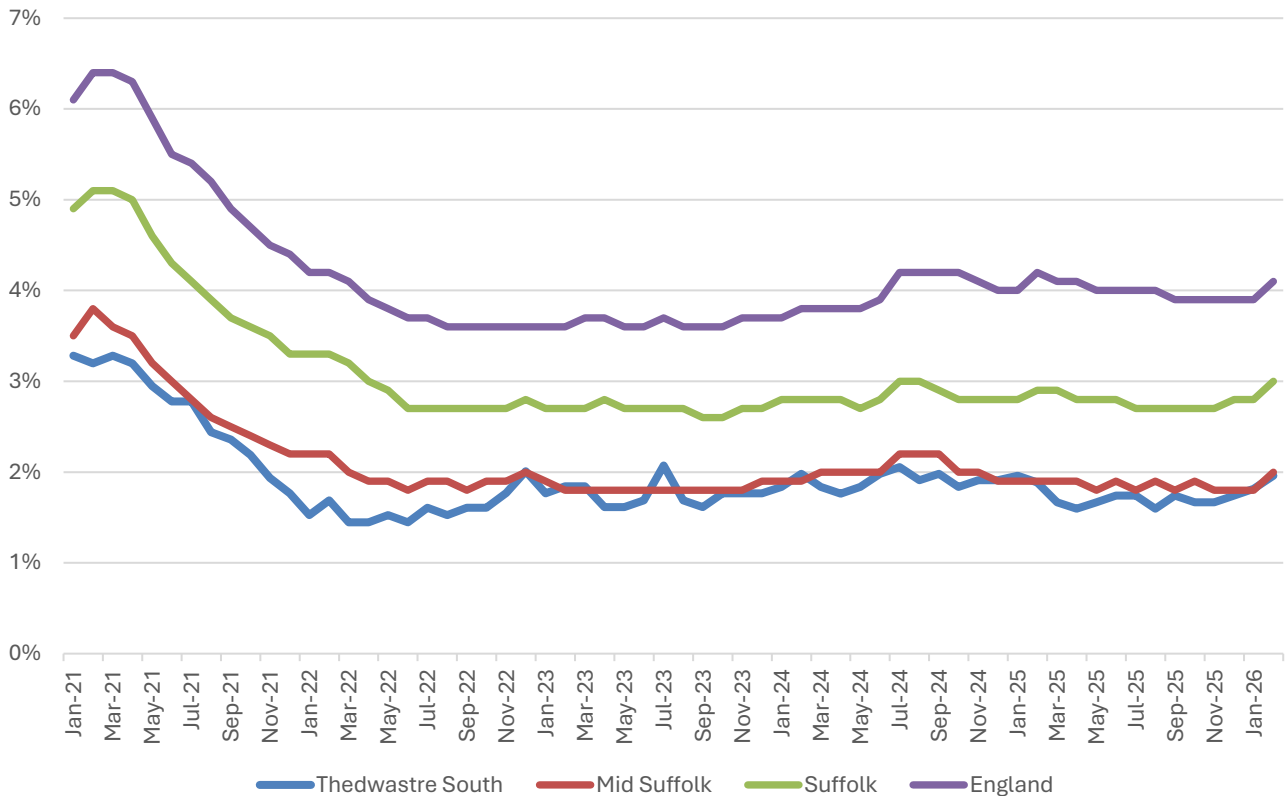
There are around 2,900 people employed in Thedwastre South.



- Education, health, construction, and wholesale, retail and motor trades are the four largest sectors in Thedwastre South.
- In total, these four sectors account for two thirds of jobs in the division.

Labour Market

Out-of-work benefit claimant rate



- In February 2026 (the latest available data), 2% of 16-64-year-olds were claiming out-of-work benefits in the division.
- In common with Mid Suffolk, Suffolk and England as a whole, Thedwastre South saw a steady decline in the proportion of the working age population claiming out-of-work benefits during 2021 and into 2022 following a peak during the COVID-19 pandemic.
- Since then, the claimant rate has generally been just under 2%.
- The claimant rate in the division is consistently similar to the Mid Suffolk average, but below the county and national benchmarks.

Schools

School Information

Schools in the Division

Name	Phase	Academy Status	No. pupils	Average cohort size at:			
				Foundation Stage (age 4-7)	KS2 (age 7-11)	KS4 (age 14-16)	KS5 (age 16-18)
Great Finborough CEVCP School	Primary	LA	108	15	17		
Rattlesden CofE Primary Academy	Primary	AC	135	19	13		
Thurston CofE Primary Academy	Primary	AC	349	50	54		
Thurston Community College	Secondary	LA	1,512			266	90

Academy Status key: AS = Academy Sponsored, AC = Academy Converter, LA = LA Maintained, F = Free

Ofsted information

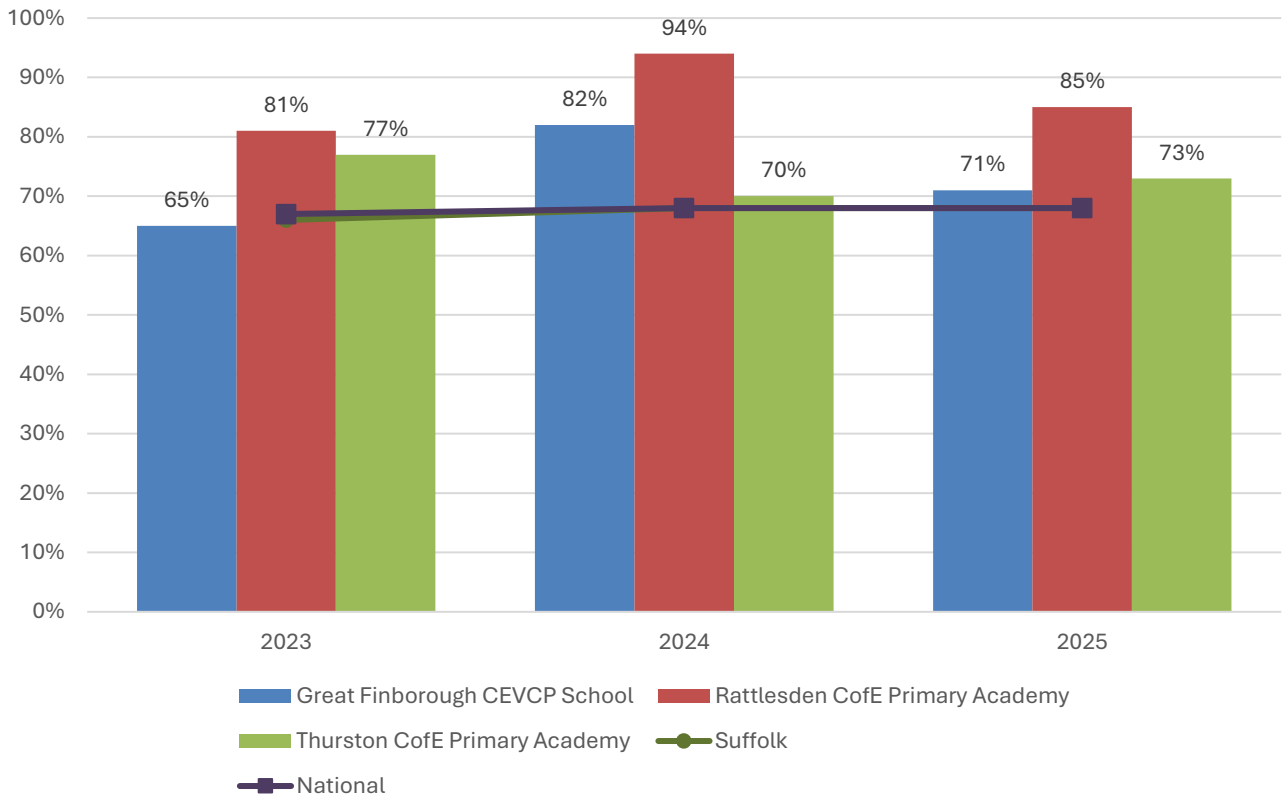
Name	Overall effectiveness	Effectiveness of leadership and management	Behaviour and attitudes	Personal development	Early years provision (if applicable)	Quality of education	Last inspection date
Great Finborough CEVCP School	2	2	2	2	2	2	29/11/2022
Rattlesden CofE Primary Academy	2	2	9	9	2	9	18/10/2018
Thurston CofE Primary Academy	5	2	2	2	2	2	12/11/2024
Thurston Community College	2	2	9	9	9	9	23/03/2018

Code	Judgement	Code	Judgement
0	Insufficient evidence	SM	Special measures
1	Outstanding	8	Does not apply
2	Good	9	No judgement
3	Requires improvement	Null	No data available
4	Inadequate	Not judged	Not judged
SWK	Serious weaknesses	5	No overall grade

School Attainment

Foundation Stage Profile (reception)

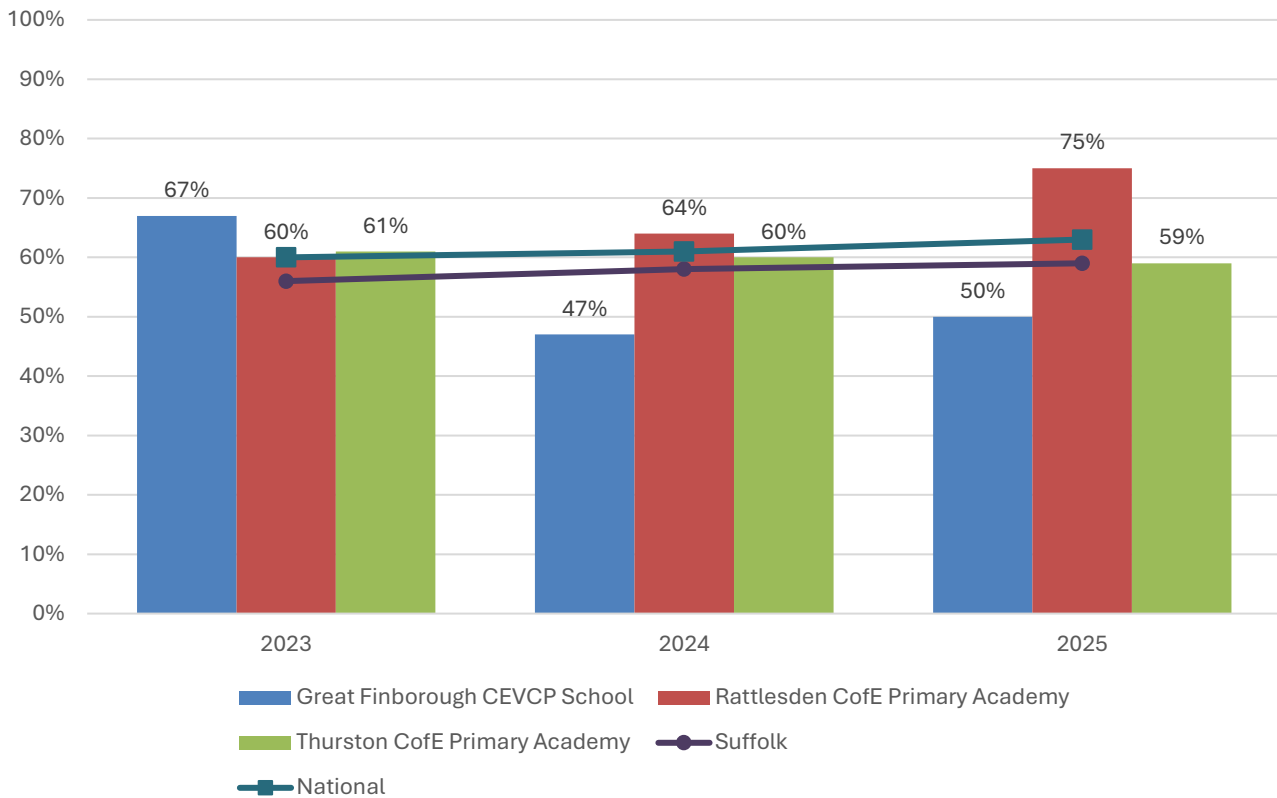
% pupils achieving Good Level of Development (GLD)



- In 2025, the percentage of pupils to achieve a Good Level of Development (GLD) at Foundation Stage (FS) was 71% at Great Finborough CEVCP School, 85% at Rattlesden Church of England Primary Academy, 73% at Thurston Church of England Primary Academy, and 68% nationally.
- FS attainment at Rattlesden Church of England Primary Academy and Thurston Church of England Primary Academy has been consistently above the county and national benchmarks over the last three years.
- Attainment was also above average at Great Finborough CEVCP School in 2024 and 2025, and just two percentage points below the England figure in 2023.

Key Stage 2 (age 11)

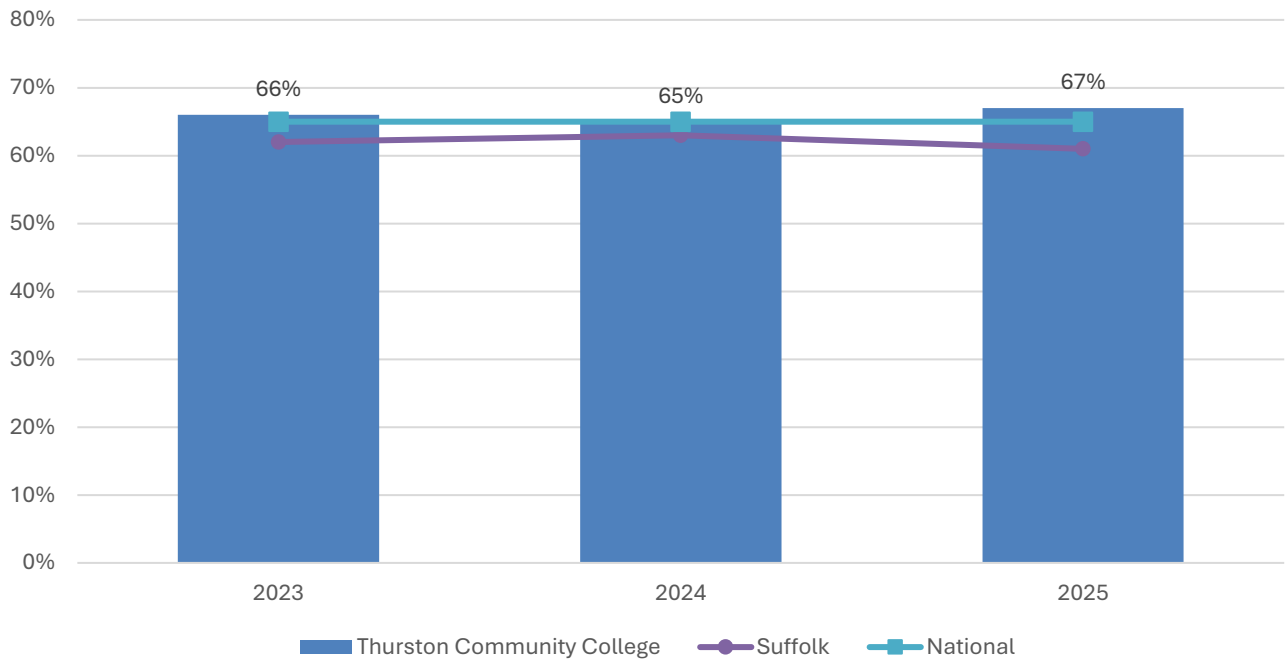
% pupils achieving the Expected Level or better in Reading, Writing and Mathematics



- In 2025, the percentage of pupils to achieve the expected level or better in reading, writing and mathematics at Key Stage 2 was 75% at Rattlesden Church of England Primary Academy, 50% at Great Finborough CEVCP School, 59% at Thurston CofE Primary Academy and 63% nationally.
- Key stage 2 attainment at Rattlesden Church of England Primary Academy has been at or above the national benchmark throughout the last three years.
- Attainment has been very consistent at Thurston Church of England Primary Academy, varying by only two percentage points from 2023 to 2025, but was marginally below the England figure in the latter two years.
- Great Finborough CEVCP School saw the highest KS2 attainment level of any school in the division in 2023; seven percentage points above the national level. Attainment at the school dipped below average in 2024 and 2025.

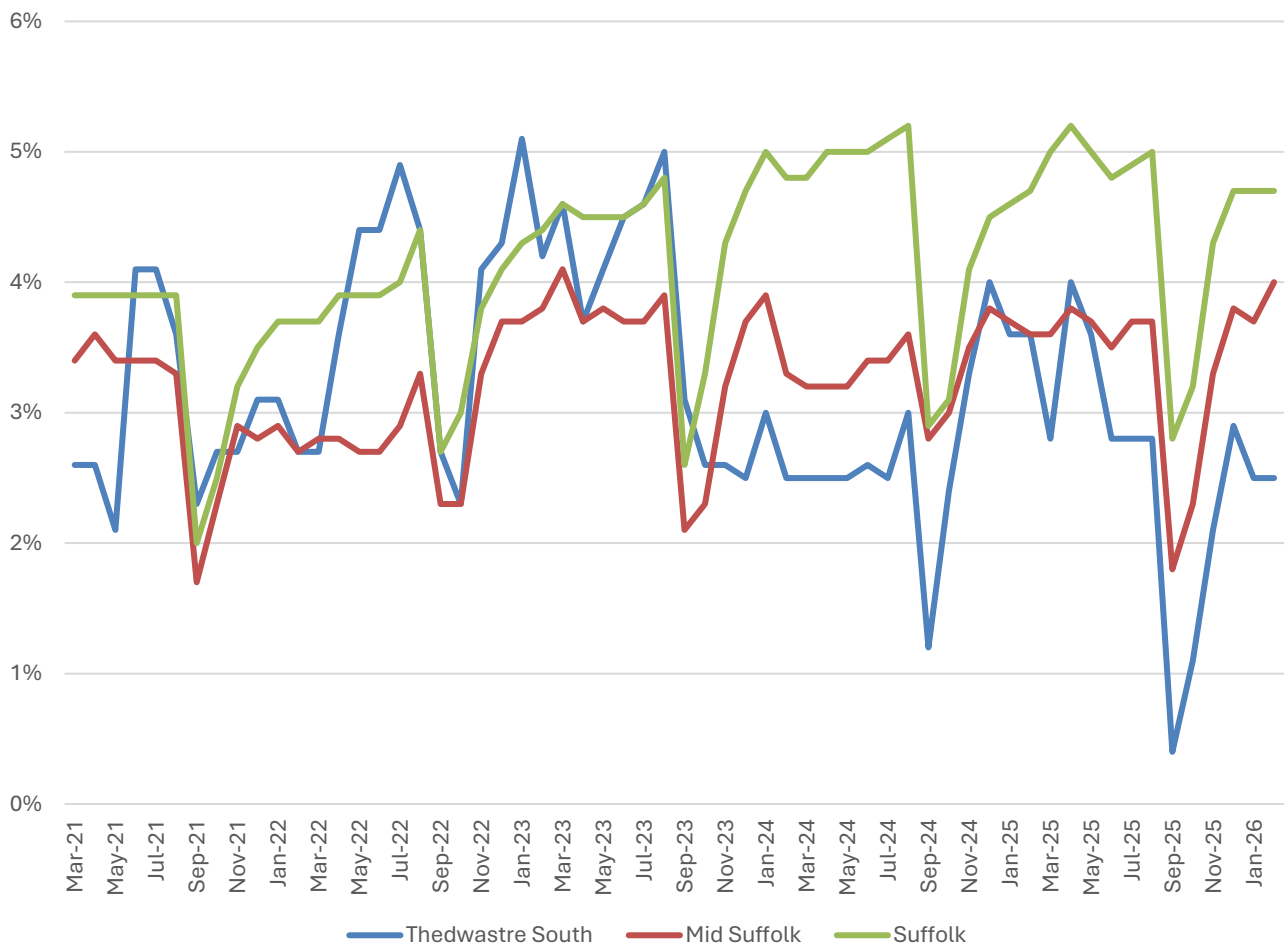
Key Stage 4 (GCSE) (age 16)

% pupils achieving level 4-9 in English and Mathematics



- Key Stage 4 attainment at Thurston Community College has been very consistent over the last three years, and always at or above the national benchmark.

NEET % (Not in Education, Employment or Training)



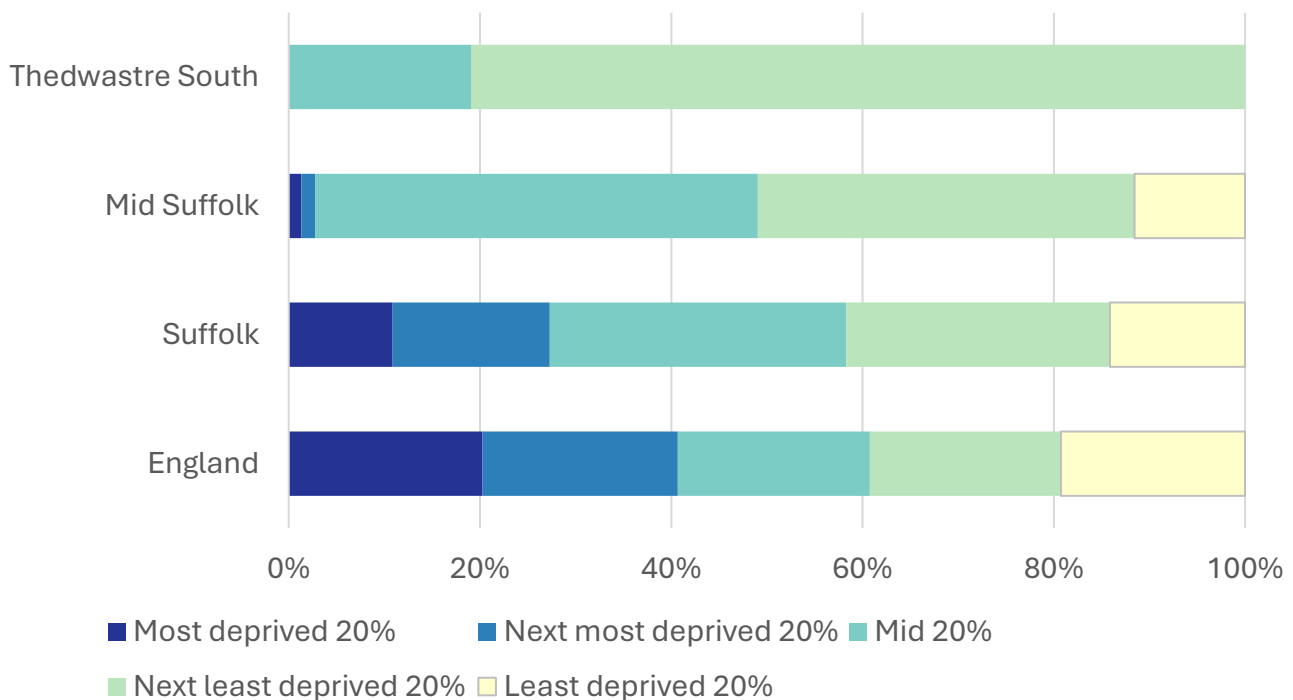
- In February 2026, 2.5% of 16-17-year-olds in Thedwastre South were classified as NEET (not in education, employment or training).
- NEET levels fluctuate considerably according to the time of year and due to small numbers of 16-17-year-olds in the division, typically being at their lowest at the beginning of a new school year.
- In Thedwastre South, the proportion of children who are NEET was generally close to the Suffolk figure and above the Mid Suffolk rate prior to 2024. Since then, the NEET rate in the division has been almost invariably below the district and county benchmarks.

Index of Multiple Deprivation (IMD) 2025 (see map overleaf)

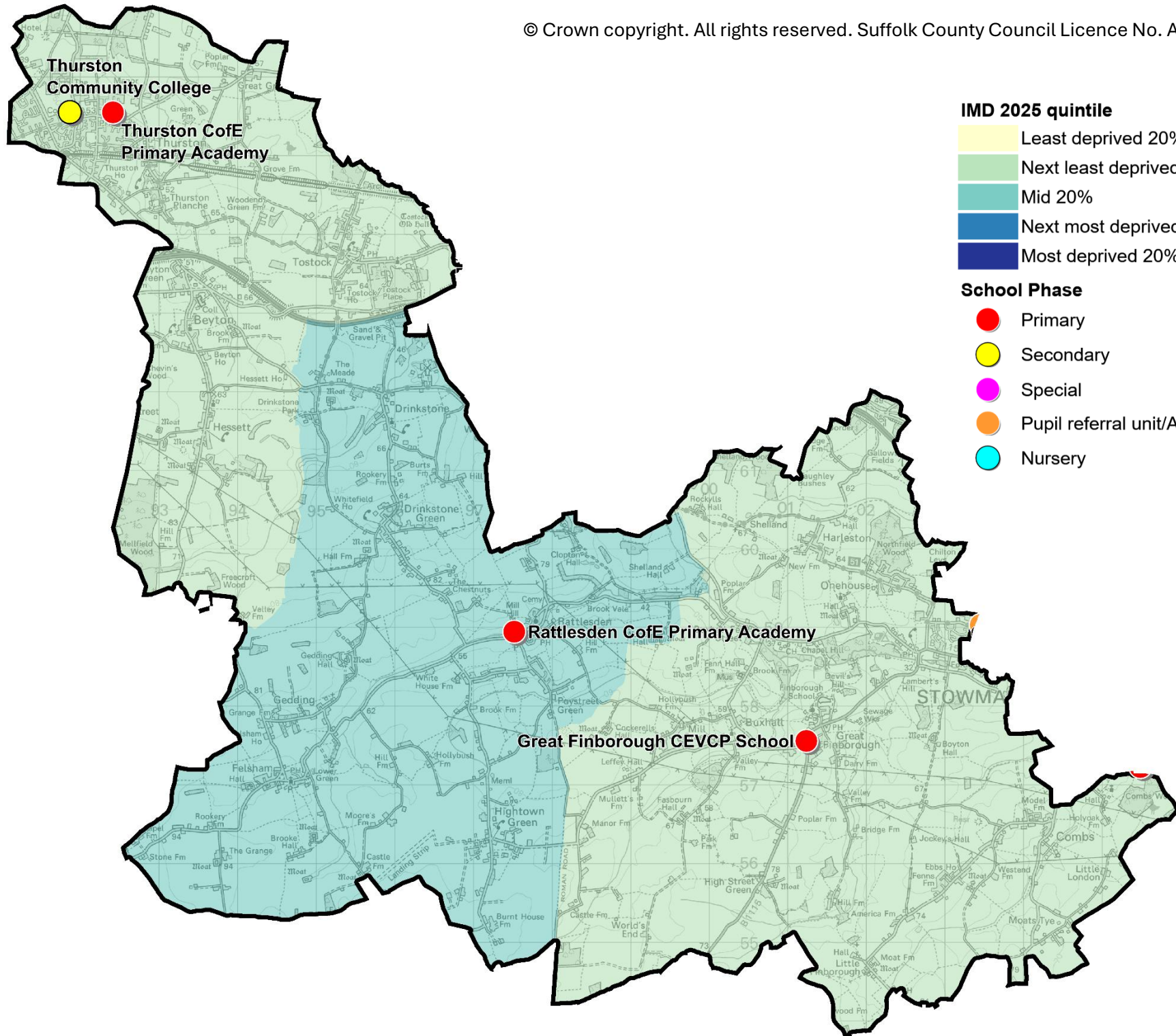
The IMD combines a number of indicators, chosen to cover a range of economic, social and housing issues, into a single deprivation score for each small area in England. This allows each area to be ranked relative to one another according to their level of deprivation. Small areas (Lower Super Output Areas, average population 1,700) are most commonly described as being in 1 of 5 quintile bands. The bottom quintile represents the 20% of areas that are the most deprived in England; these are shaded pale yellow on the map. The top quintile represents the least deprived areas in England and is shaded dark blue.

The Index is widely used to analyse patterns of deprivation, identify areas that would benefit from special initiatives or programmes and as a tool to determine eligibility for specific funding streams.

The chart below shows the percentage of the population of the division that live in areas ranked among each of the five quintiles of deprivation, alongside the district, county and England comparators.



- The 2025 IMD shows that deprivation levels in Thedwastre South are largely uniform, and are low to moderate.
- More than 80% of the population live in areas that are ranked in the second least deprived quintile in England (i.e. the 20-40% least deprived), with the remainder in the middle quintile.
- See the map overleaf for the distribution of IMD 2025 results across the division.



**Thurston
Community College**



**Thurston CofE
Primary Academy**




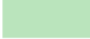



Rattlesden CofE Primary Academy








Great Finborough CEVCP School



IMD 2025 quintile

-  Least deprived 20%
-  Next least deprived 20%
-  Mid 20%
-  Next most deprived 20%
-  Most deprived 20%

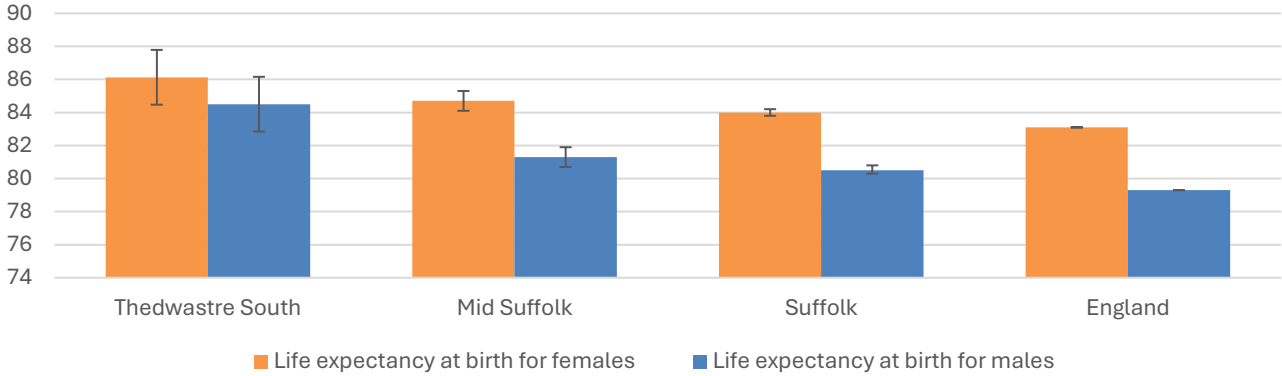
School Phase

-  Primary
-  Secondary
-  Special
-  Pupil referral unit/Alternative provision
-  Nursery

Health

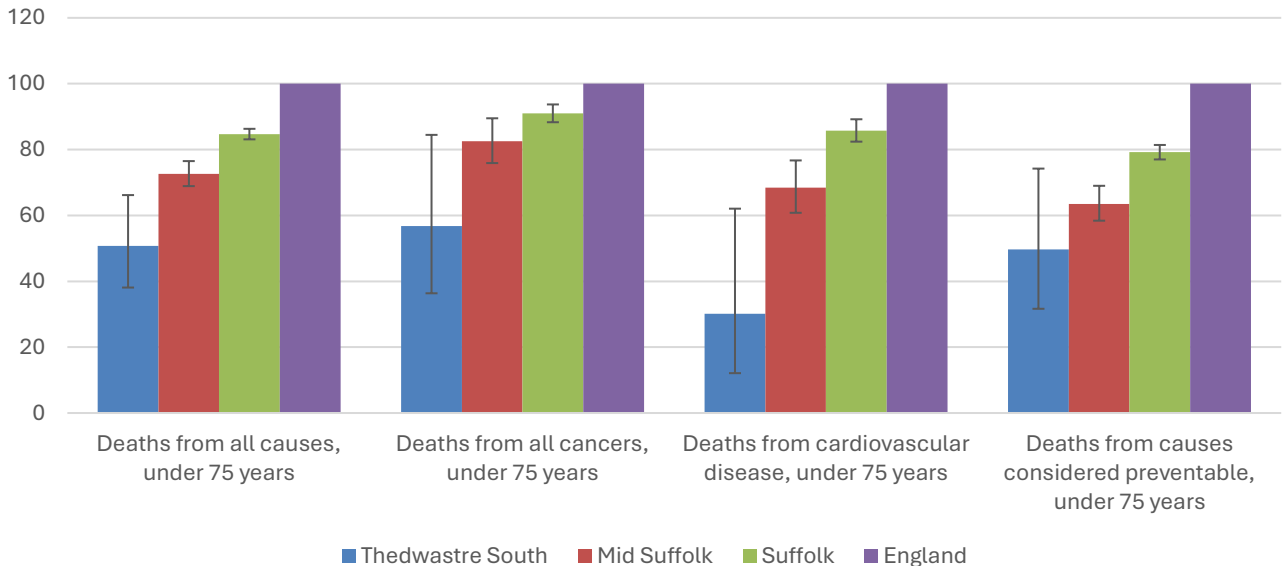
The local data used here is based on relatively small numbers. The confidence limits provide an indication of the reliability of the data. The 95% confidence intervals utilised on the chart provide a range within which there is 95% chance of the true result lying.

Life expectancy at birth



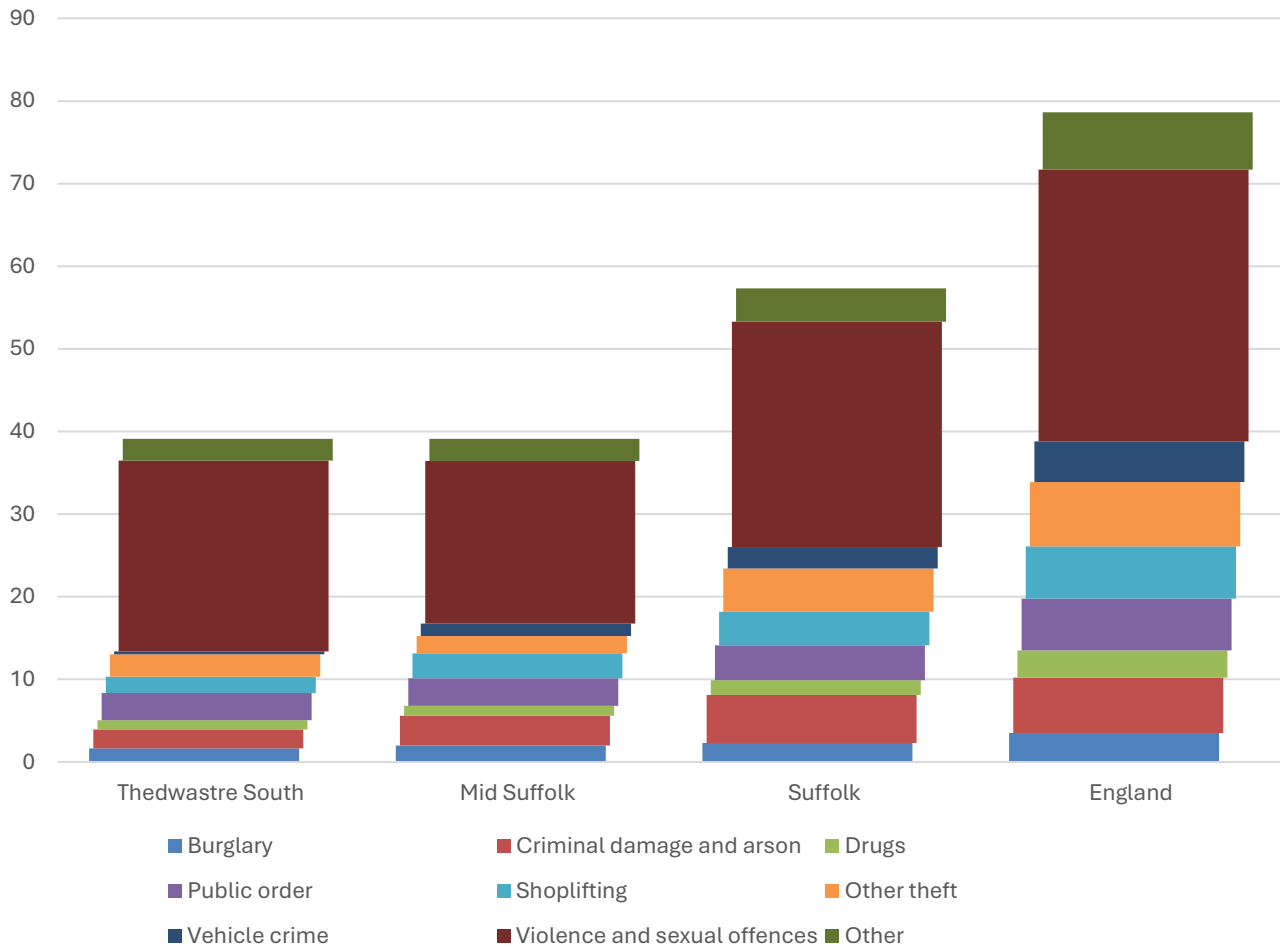
- The latest life expectancy at birth estimates for Thedwastre South are 86.1 for females (the England figure is 83.1), and 84.5 for males (compared to 79.3 nationally).
- Life expectancy for both males and females in the division are statistically significantly higher than the England figures.

Deaths, under 75 years, standardised mortality ratio



- Estimated standardised mortality ratios for early deaths from all causes, cancers, cardiovascular disease and causes considered preventable in Thedwastre South are below 100, indicating that deaths in under 75s due to these causes are lower than in England.
- Confidence intervals around these estimates are wide for local data, but the SMRs for deaths from all of the causes shown here are statistically significantly lower in the division than in than England.
- The standardised mortality ratio data shown here means that for every 100 early deaths from all causes across England as a whole, there are an estimated 51 comparable deaths in Thedwastre South.

Crime & Community Safety



- Crime levels in Thedwastre South are relatively low compared to the county average, and similar to the Mid Suffolk rate.
- In the year to the end of January 2026, there were 39 recorded crimes per 1,000 residents in the division, compared to 39 in Mid Suffolk, and 57 countywide.
- By far the most common type of crime recorded during this period was violence and sexual offences, which accounted for just over half of all recorded crimes in the division.

Additional Information

Parishes in Division

- | | |
|------------------|-------------------|
| Beyton | Hessett |
| Buxhall | Little Finborough |
| Combs | Onehouse |
| Drinkstone | Rattlesden |
| Felsham | Shelland |
| Gedding | Thurston |
| Great Finborough | Tostock |
| Harleston | |

Data sources

Category	Indicator	Source
Demographic Profile	Quinary population table 2024	ONS 2024 mid-year population estimates
	Population pyramid 2024	ONS 2024 mid-year population estimates
	Ethnicity 2021	ONS 2021 Census
Economy	Employment by broad industrial sector 2024	ONS Business Register and Employment Survey via NOMIS
Labour market	Claimant count: The number of people claiming Jobseeker's Allowance plus those who claim Universal Credit who are out of work (% 16-64 population) January 2021-February 2026	DWP via NOMIS
Education	School information and attainment 2023-2025	Suffolk County Council CYP iHub
	% 16-17-year-olds NEET (Not in Employment, Education or Training) March 2021 to February 2026	Suffolk County Council CYP iHub via the Suffolk Observatory
Deprivation	Index of Multiple Deprivation 2025	Ministry of Housing, Communities and Local Government
Health	Life expectancy at birth 2016-2020 (2018-2020 for comparator areas)	Office for Health Improvement and Disparities
Health	Standardised mortality ratio for deaths from all causes, cancer, cardiovascular disease, and from causes considered preventable (under 75 years), 2016-2020 (2019-2023 for comparator areas). The standardised mortality ratio is the ratio of observed deaths in the study group to expected deaths in the general population	Office for Health Improvement and Disparities
Community Safety	Recorded crime rate per 1,000 resident population February 2025 to January 2026	Data.police.uk via the Suffolk Observatory

For more data and information about Thedwastre South Electoral Division, see the Suffolk Observatory www.suffolkobservatory.info

