

Thedwastre North

County Electoral Division profile
May 2026

This division comprises Elmswell & Woolpit Ward in its entirety, and parts of Bacton, Thurston, and Walsham-le-Willows Wards



Contents

- Demographic Profile: Age & Ethnicity
- Economy and Labour Market
- Schools & NEET
- Index of Multiple Deprivation
- Health
- Crime & Community Safety
- Additional Information
- Data Sources

Electoral Division Profiles: an introduction

These profiles have been produced to support elected members, constituents and other interested parties in understanding the demographic, economic, social and educational profile of their neighbourhoods. We have used the latest data available at the time of publication.

Much more data is available from national and local sources than is captured here, but it is hoped that the profile will be a useful starting point for discussion, where local knowledge and experience can be used to flesh out and illuminate the information presented here.

The profile can be used to help look at some fundamental questions e.g.

- Does the age profile of the population match or differ from the national profile?
- Is there evidence of the ageing profile of the county in all the wards in the Division or just some?
- How diverse is the community in terms of ethnicity?
- What is the impact of deprivation on families and residents?
- Does there seem to be a link between deprivation and school performance?
- What is the breakdown of employment sectors in the area?
- Is it a relatively healthy area compared to the rest of the district or county?
- What sort of crime is prevalent in the community?

A vast amount of additional data is available on the **Suffolk Observatory**

www.suffolkobservatory.info

The Suffolk Observatory is a free online resource that contains all Suffolk's vital statistics; it is the one-stop-shop for information and intelligence about Suffolk. Through data, reports and maps, the Suffolk Observatory provides a comprehensive picture of the County. It is a great source for useful facts and figures that can be used for writing reports and presentations, informing strategic and business planning, preparing funding applications or supporting academic research. Data is presented around the key themes of population, children and young people, health and social care, housing, crime and community safety, deprivation, economy and employment and environment. All areas of the county are covered, right down to district, electoral division, ward and parish level, with information easily accessible in a variety of formats. You can also build your own reports for custom areas.

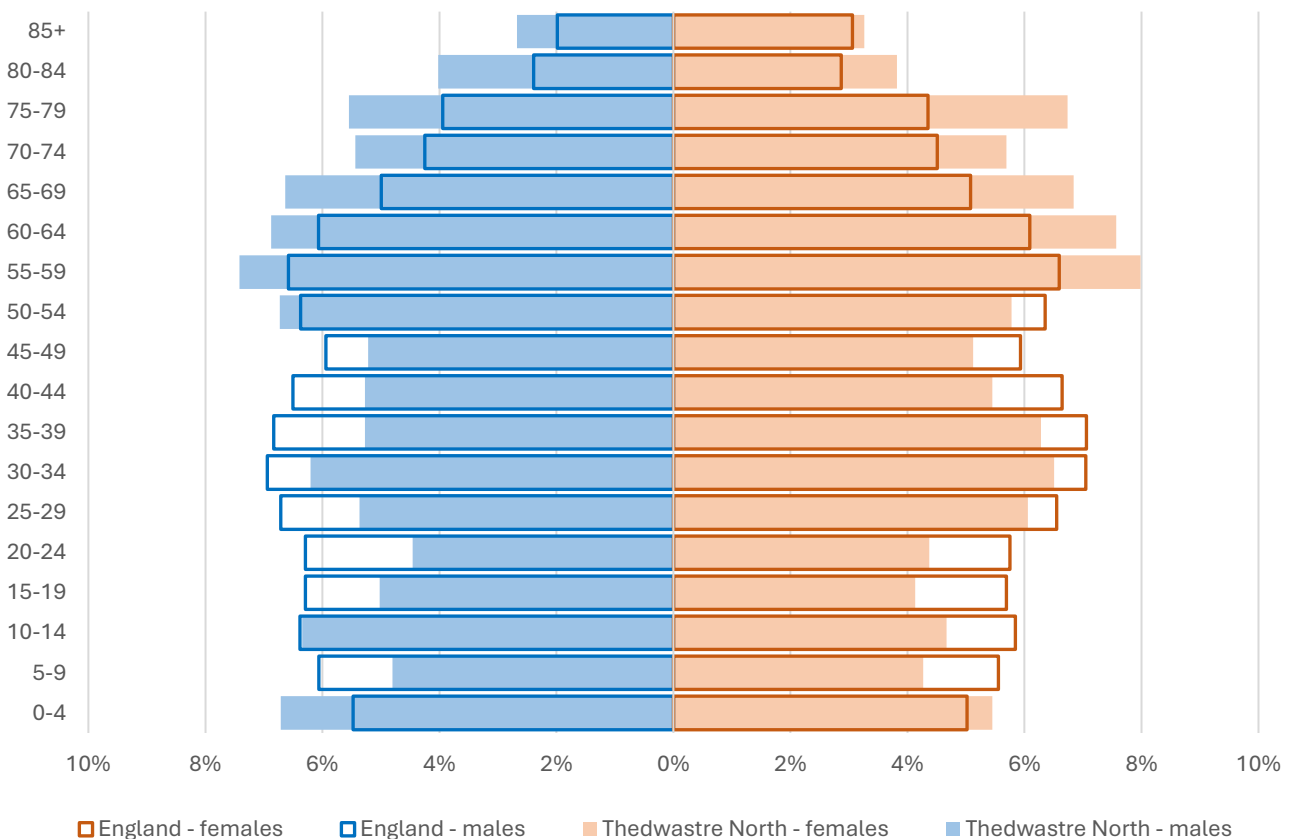
Technical Notes:

1. Where electoral divisions do not exactly match the boundaries at which the data is available (e.g. ward, Output Area or Lower Super Output Area), we have adopted a "best-fit" approach to produce a dataset.
2. District, county and national level data is provided where possible to provide a context for comparisons.

Demographic Profile - Age

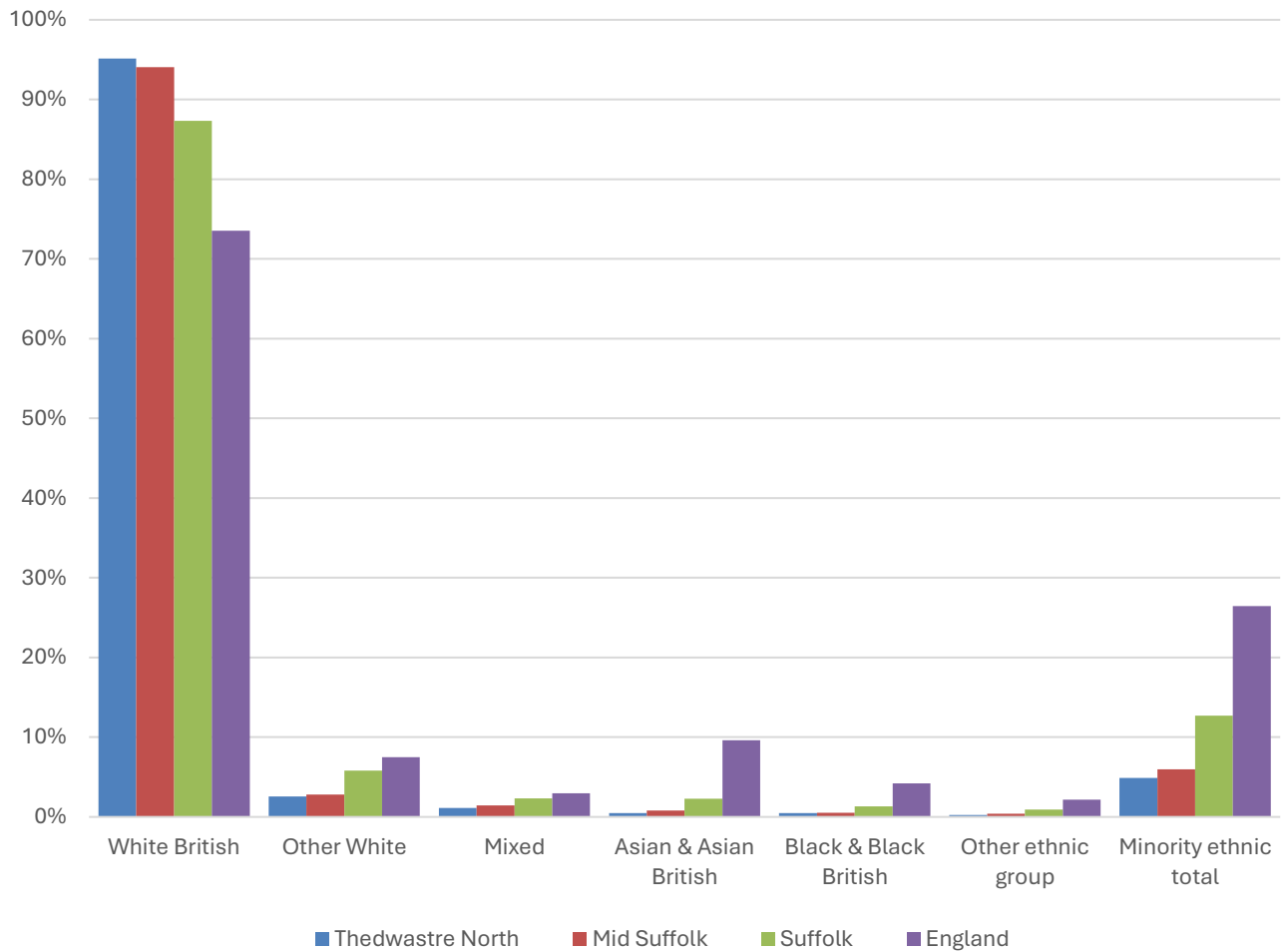
In mid-2024, the estimated population of Thedwastre North stood at 11,260, an increase of 20.9% over the past decade. The age structure of the component wards and the division as a whole is set out below.

	Thedwastre North Division	Elmswell & Woolpit Ward	Walsham-le-Willows Ward	Thurston Ward	Bacton Ward
All Ages	11,260	7,746	1,535	1,407	572
0-4	683	538	71	53	21
5-9	510	370	52	69	19
10-14	618	441	73	83	21
15-19	514	336	73	80	25
20-24	497	339	62	66	30
25-29	644	528	56	42	18
30-34	716	541	90	64	21
35-39	652	486	63	84	19
40-44	604	420	71	83	30
45-49	582	388	77	76	41
50-54	703	454	98	105	46
55-59	868	575	122	117	54
60-64	814	501	146	131	36
65-69	759	451	144	118	46
70-74	627	418	98	55	56
75-79	693	451	120	76	46
80-84	441	294	75	54	18
85+	335	215	44	51	25



- The age pyramid for Thedwastre North division shows a higher proportion of people aged 45 and over than in England as a whole.
- All age groups under 50 are underrepresented in the division, with the exception of 0-4-year-olds.
- The most common age group in the division is 55-59-year-olds (7.7% of the local population), followed by 60-64-year-olds (7.2%), and 65-69-year-olds (6.7%).
- Just over a quarter of the population of Thedwastre North is of retirement age. The England figure is 18.7%.

Demographic Profile - Ethnicity

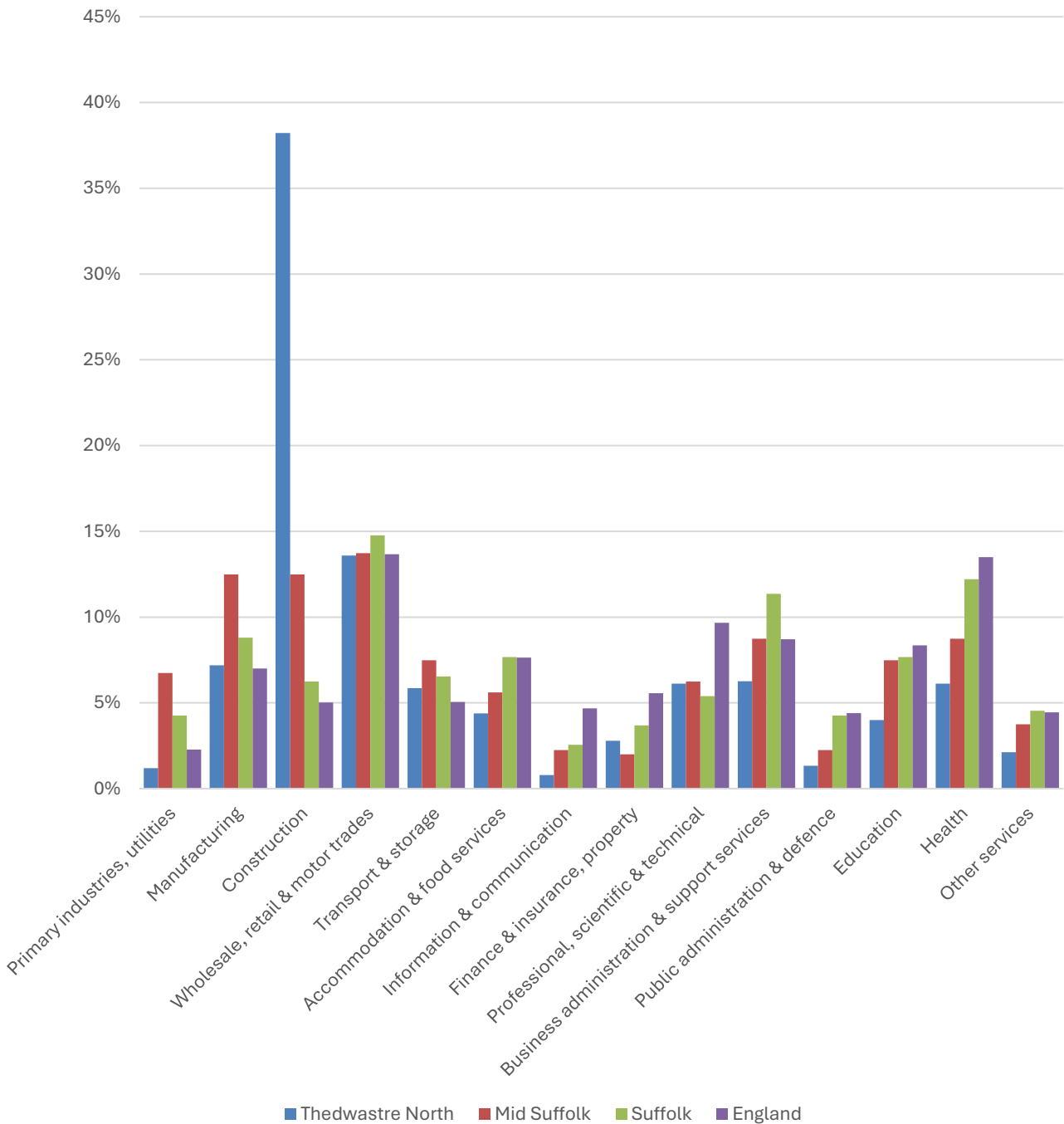


- According to the latest data (2021 Census), 95.1% of the population of Thedwastre North is White British.
- There were 479 (4.9%) residents from minority ethnic groups in the division, around 40% of the proportion in Suffolk overall, and a fifth of the England average.
- Thedwastre North has a broadly similar ethnic diversity profile to Mid Suffolk district as a whole.

	All people		White British		Other White		Mixed		Asian and Asian British		Black and Black British		Other Ethnic Group		Total minority ethnic population	
	Count	%	Count	%	Count	%	Count	%	Count	%	Count	%	Count	%	Count	%
Thedwastre North	9,831		9,352	95.1	252	2.6	109	1.1	47	0.5	48	0.5	23	0.2	479	4.9
Mid Suffolk	102,701		96,581	94.0	2,882	2.8	1,463	1.4	821	0.8	553	0.5	401	0.4	6,120	6.0
Suffolk	760,687		664,205	87.3	44,066	5.8	17,807	2.3	17,483	2.3	10,168	1.3	6,958	0.9	96,482	12.7
England				73.5		7.5		3.0		9.6		4.2		2.2		26.5

Economy

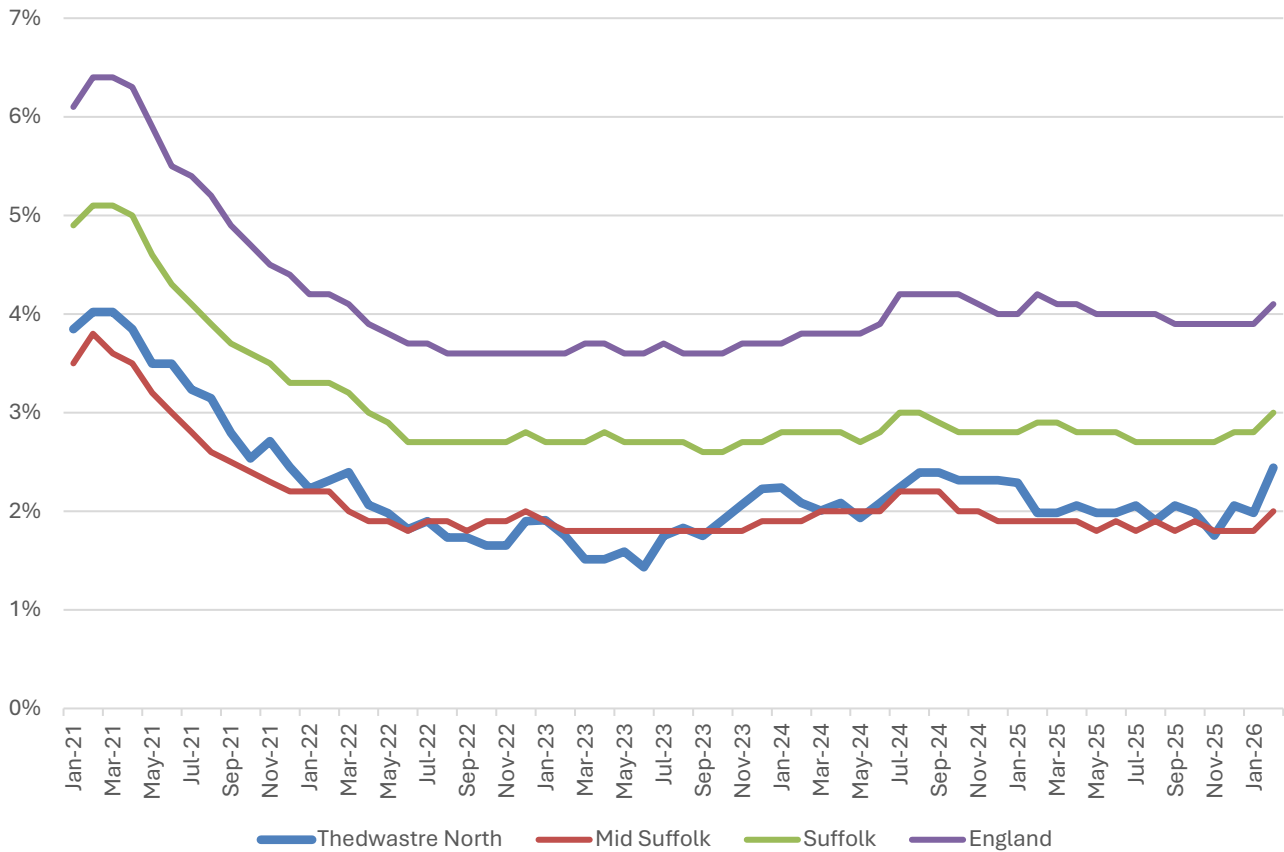
There are around 3,800 people employed in Thedwastre North.



- Construction is by far the most important sector in Thedwastre North. The sector accounts for 38% of jobs in the division, compared to just 5% nationally.
- As a result of the dominance of construction jobs, all other sectors are underrepresented in the division.
- Wholesale, retail and motor trades is the next largest sector, providing a further 13.6% of local jobs.

Labour Market

Out-of-work benefit claimant rate



- In common with Mid Suffolk, Suffolk and England as a whole, Thedwastre North saw a steady decline in the proportion of the working age population claiming out-of-work benefits during 2021 and into 2022 following a peak during the COVID-19 pandemic.
- Since then, the claimant rate has been fairly stable at around 2%.
- In February 2026 (the latest available data), 2.4% of 16-64-year-olds were claiming out-of-work benefits in the division.
- The claimant rate in the division tends to be similar to the Mid Suffolk average, but below the county and national benchmarks.

Schools

School Information

Schools in the Division

Name	Phase	Academy Status	No. pupils	Average cohort size at:			
				Foundation Stage (age 4-7)	KS2 (age 7-11)	KS4 (age 14-16)	KS5 (age 16-18)
Elmswell Community Primary School	Primary	LA	383	56	39		
Norton CEVCP School	Primary	LA	203	28	29		
Woolpit Primary Academy	Primary	AC	123	13	21		

Academy Status key: AS = Academy Sponsored, AC = Academy Converter, LA = LA Maintained, F = Free

Ofsted information

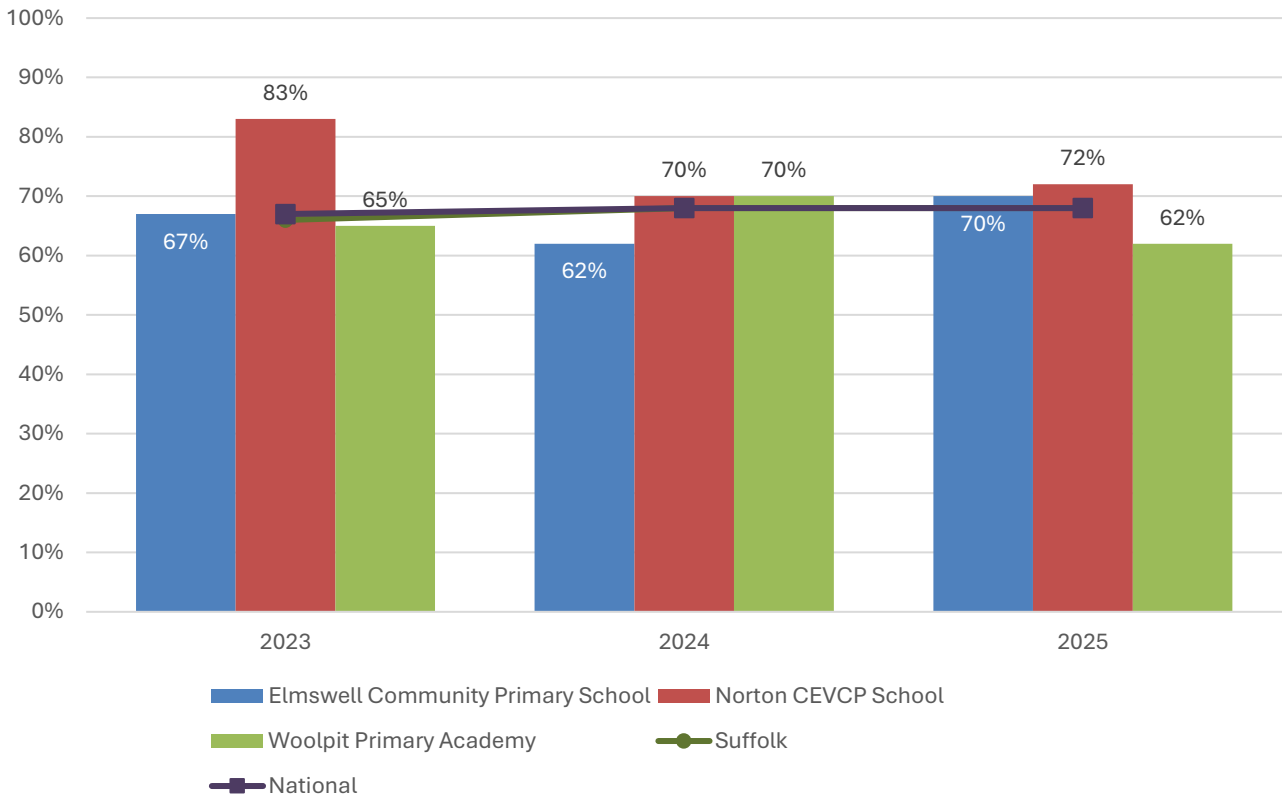
Name	Overall effectiveness	Effectiveness of leadership and management	Behaviour and attitudes	Personal development	Early years provision (if applicable)	Quality of education	Last inspection date
Elmswell Community Primary School	2	2	9	9	2	9	16/06/2016
Norton CEVCP School	5	2	1	1	1	2	03/12/2024
Woolpit Primary Academy	2	1	2	2	2	2	12/07/2022

Code	Judgement	Code	Judgement
0	Insufficient evidence	SM	Special measures
1	Outstanding	8	Does not apply
2	Good	9	No judgement
3	Requires improvement	Null	No data available
4	Inadequate	Not judged	Not judged
SWK	Serious weaknesses	5	No overall grade

School Attainment

Foundation Stage Profile (reception)

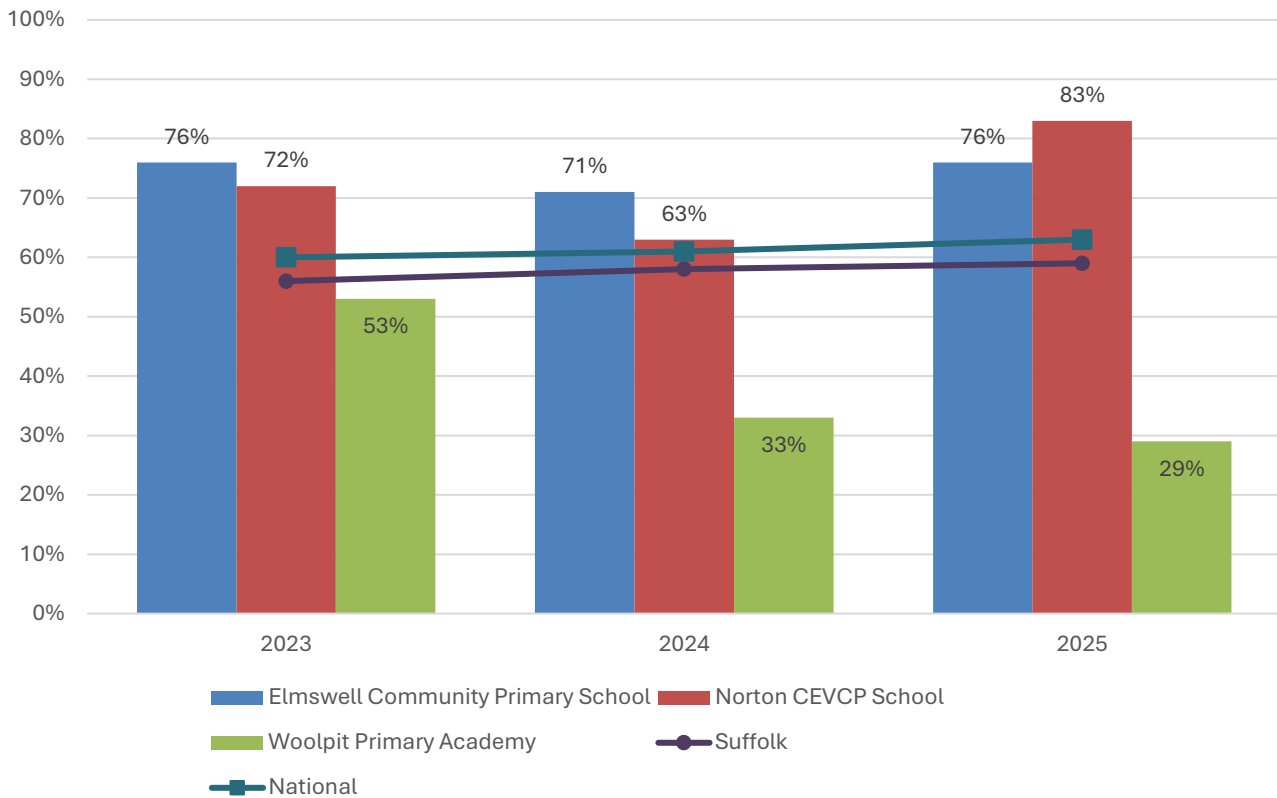
% pupils achieving Good Level of Development (GLD)



- Foundation Stage attainment at schools in Thedwastre North has generally been close to or above the county and national figures over the last three years.
- In 2025, the percentage of pupils to achieve a Good Level of Development (GLD) at Foundation Stage (FS) was 70% at Elmswell Community Primary School, 72% at Norton CEVCP School, 62% at Woolpit Primary Academy, and 68% nationally.
- Only at Norton CEVCP School has FS attainment been consistently above the national benchmark over the last three years.

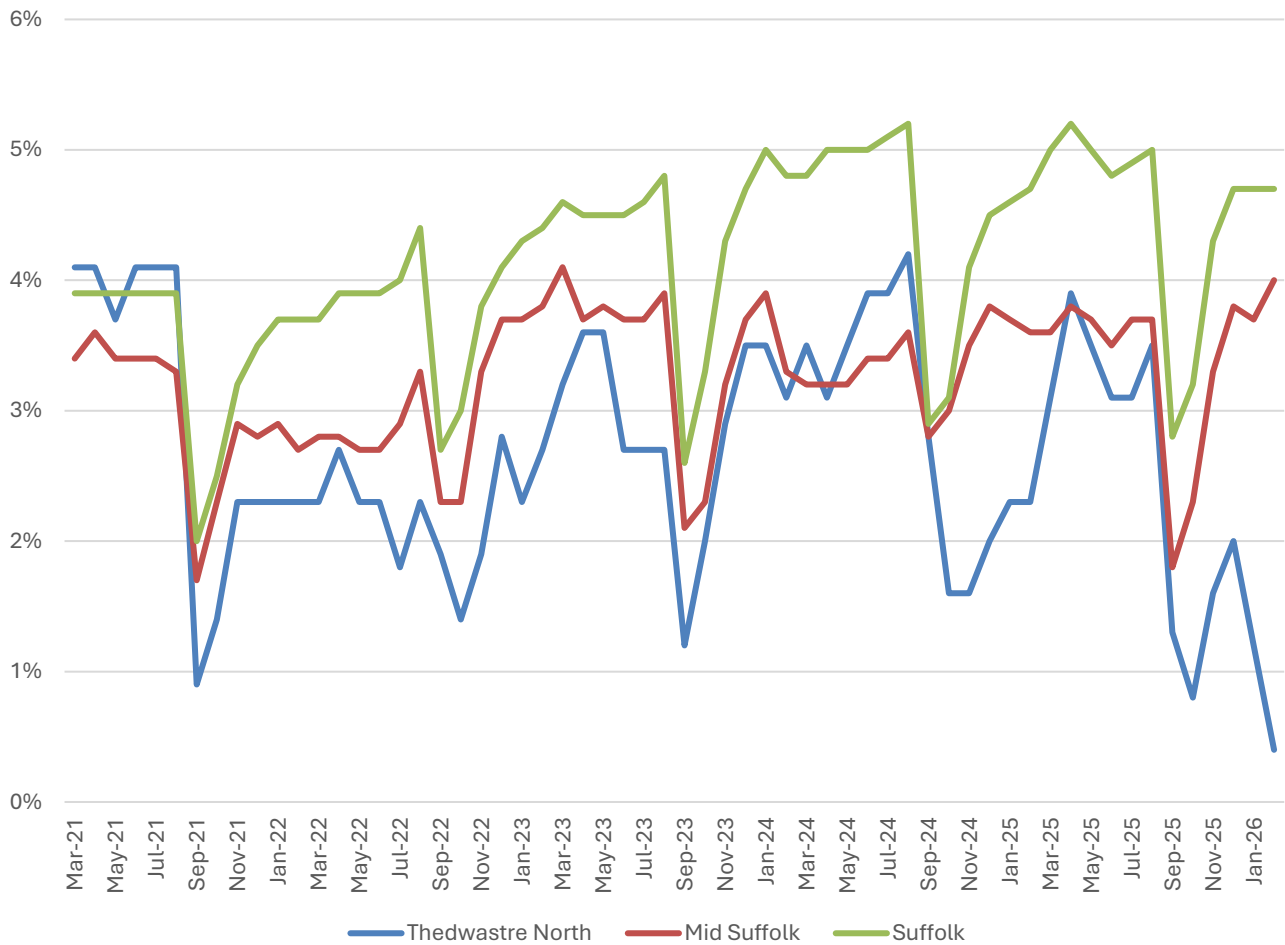
Key Stage 2 (age 11)

% pupils achieving the Expected Level or better in Reading, Writing and Mathematics



- In 2025, the percentage of pupils to achieve the expected level or better in reading, writing and mathematics at Key Stage 2 was 76% at Elmswell Community Primary School, 83% at Norton CEVCP School, 29% at Woolpit Primary Academy and 63% nationally.
- Key stage 2 attainment at Elmswell Community Primary School and Norton CEVCP School has been consistently above the county and national average over the past three years of data
- The opposite is true of KS2 attainment at Woolpit Primary Academy, where in addition to being relatively low, attainment has also seen declines year on year.

NEET % (Not in Education, Employment or Training)



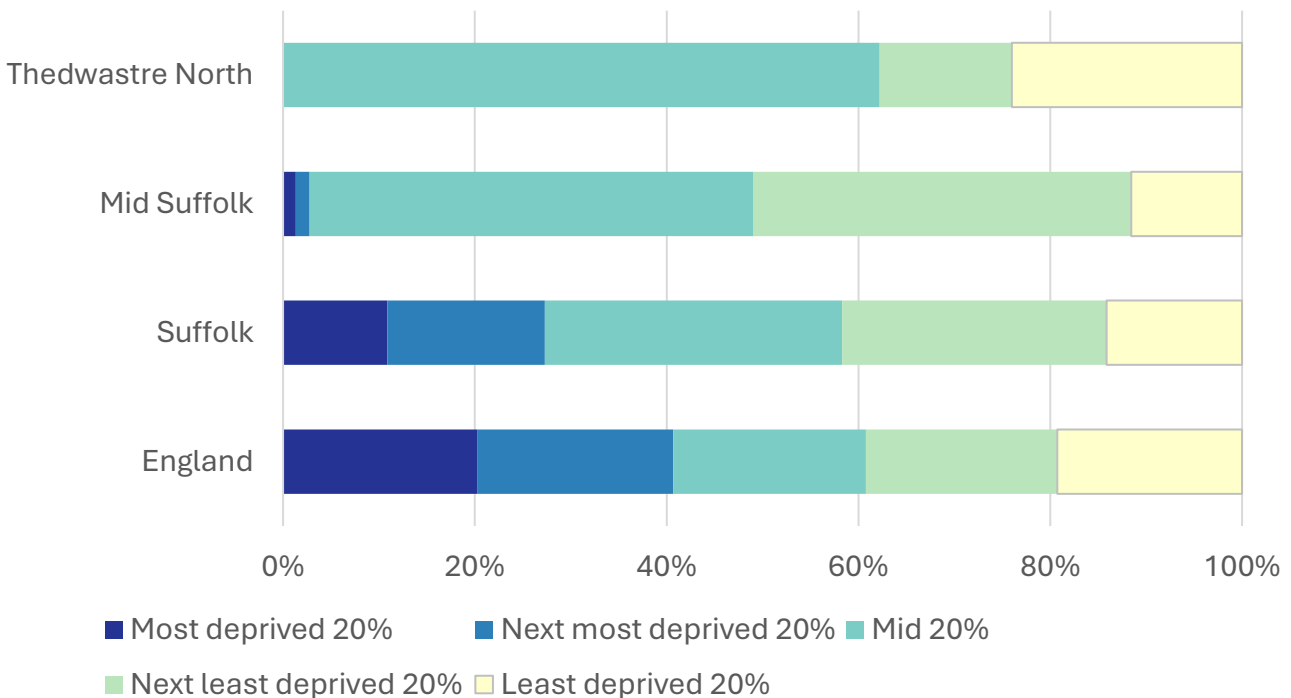
- In February 2026, 0.4% of 16-17-year-olds in Thedwastre North were classified as NEET (not in education, employment or training).
- NEET levels fluctuate considerably according to the time of year and due to small numbers of 16-17-year-olds in the division, typically being at their lowest at the beginning of a new school year.
- In Thedwastre North, the proportion of children who are NEET is generally below the district and county figures.

Index of Multiple Deprivation (IMD) 2025 (see map overleaf)

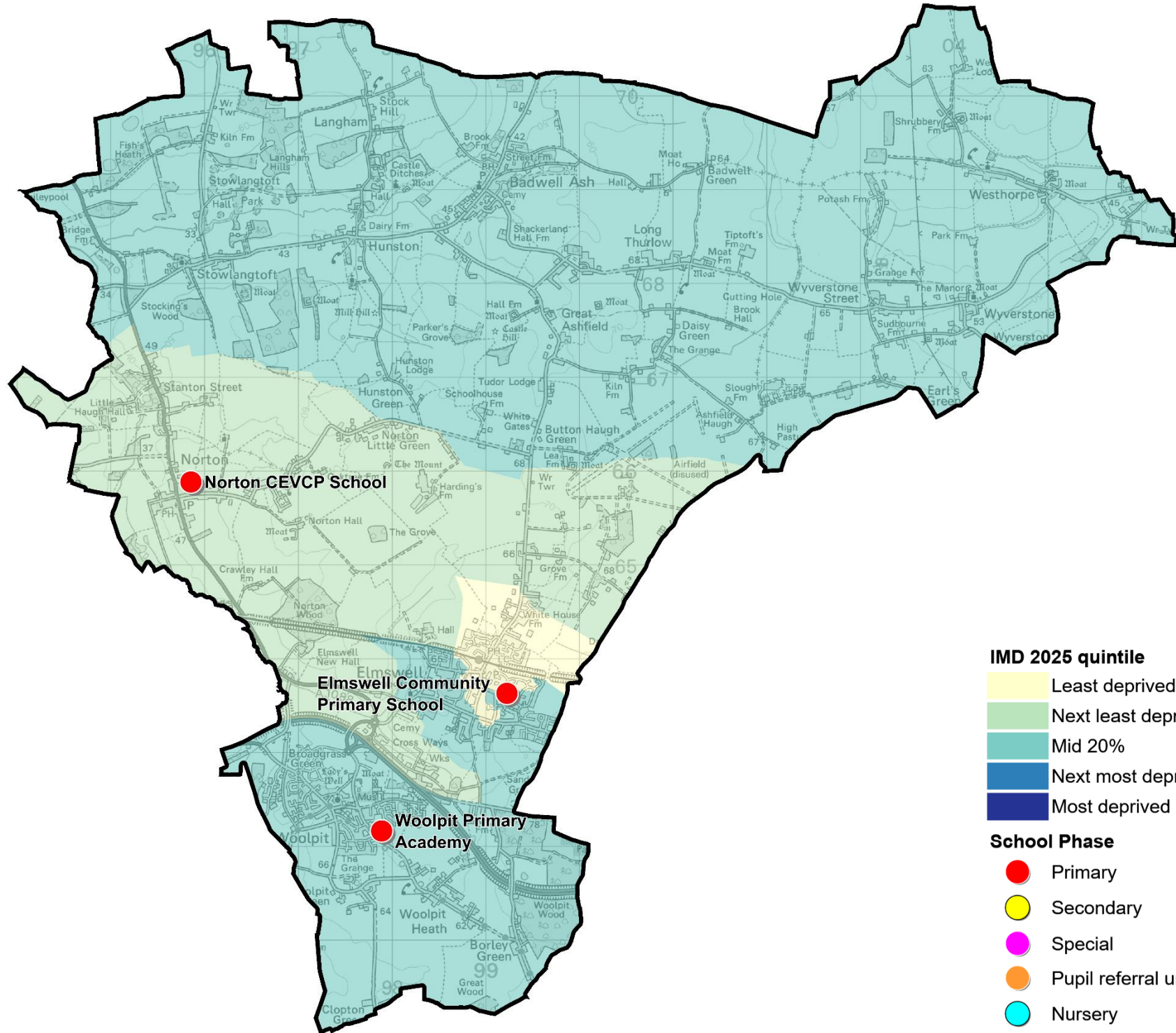
The IMD combines a number of indicators, chosen to cover a range of economic, social and housing issues, into a single deprivation score for each small area in England. This allows each area to be ranked relative to one another according to their level of deprivation. Small areas (Lower Super Output Areas, average population 1,700) are most commonly described as being in 1 of 5 quintile bands. The bottom quintile represents the 20% of areas that are the most deprived in England; these are shaded pale yellow on the map. The top quintile represents the least deprived areas in England and is shaded dark blue.

The Index is widely used to analyse patterns of deprivation, identify areas that would benefit from special initiatives or programmes and as a tool to determine eligibility for specific funding streams.

The chart below shows the percentage of the population of the division that live in areas ranked among each of the five quintiles of deprivation, alongside the district, county and England comparators.



- The 2025 IMD shows that deprivation levels in Thedwastre North are moderate to low.
- Just over three fifths of the division live in areas that are ranked in the middle quintile of deprivation.
- The rest of Thedwastre North falls in the least deprived 40% of areas in England; 24% in the least deprived quintile, and 14% in the next least deprived quintile.
- See the map overleaf for the distribution of IMD 2025 results across the division.



IMD 2025 quintile

- Least deprived 20%
- Next least deprived 20%
- Mid 20%
- Next most deprived 20%
- Most deprived 20%

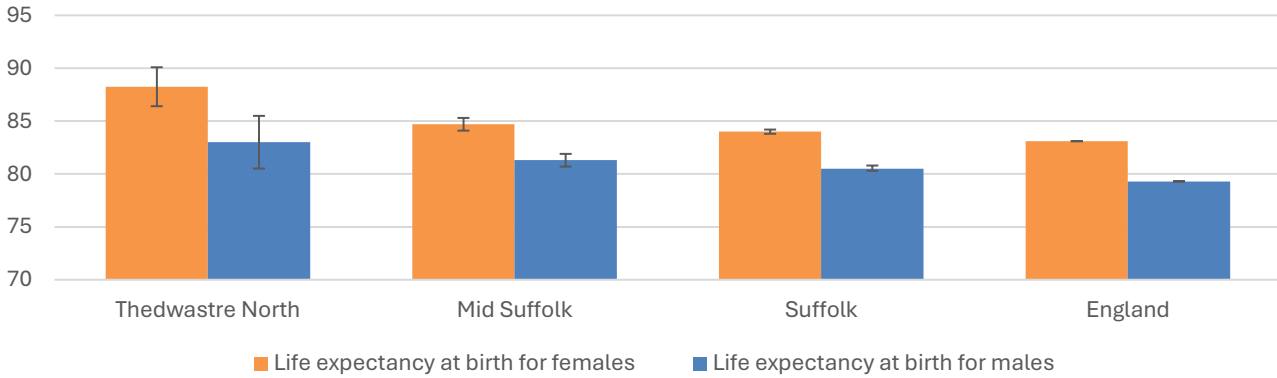
School Phase

- Primary
- Secondary
- Special
- Pupil referral unit/Alternative provision
- Nursery

Health

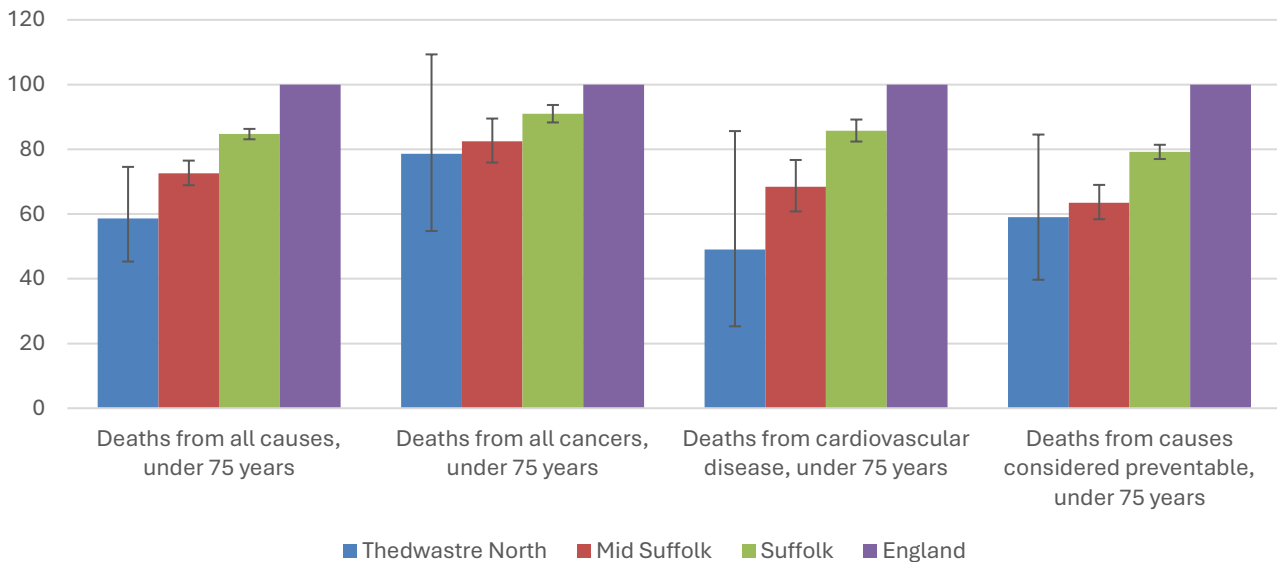
The local data used here is based on relatively small numbers. The confidence limits provide an indication of the reliability of the data. The 95% confidence intervals utilised on the chart provide a range within which there is 95% chance of the true result lying.

Life expectancy at birth



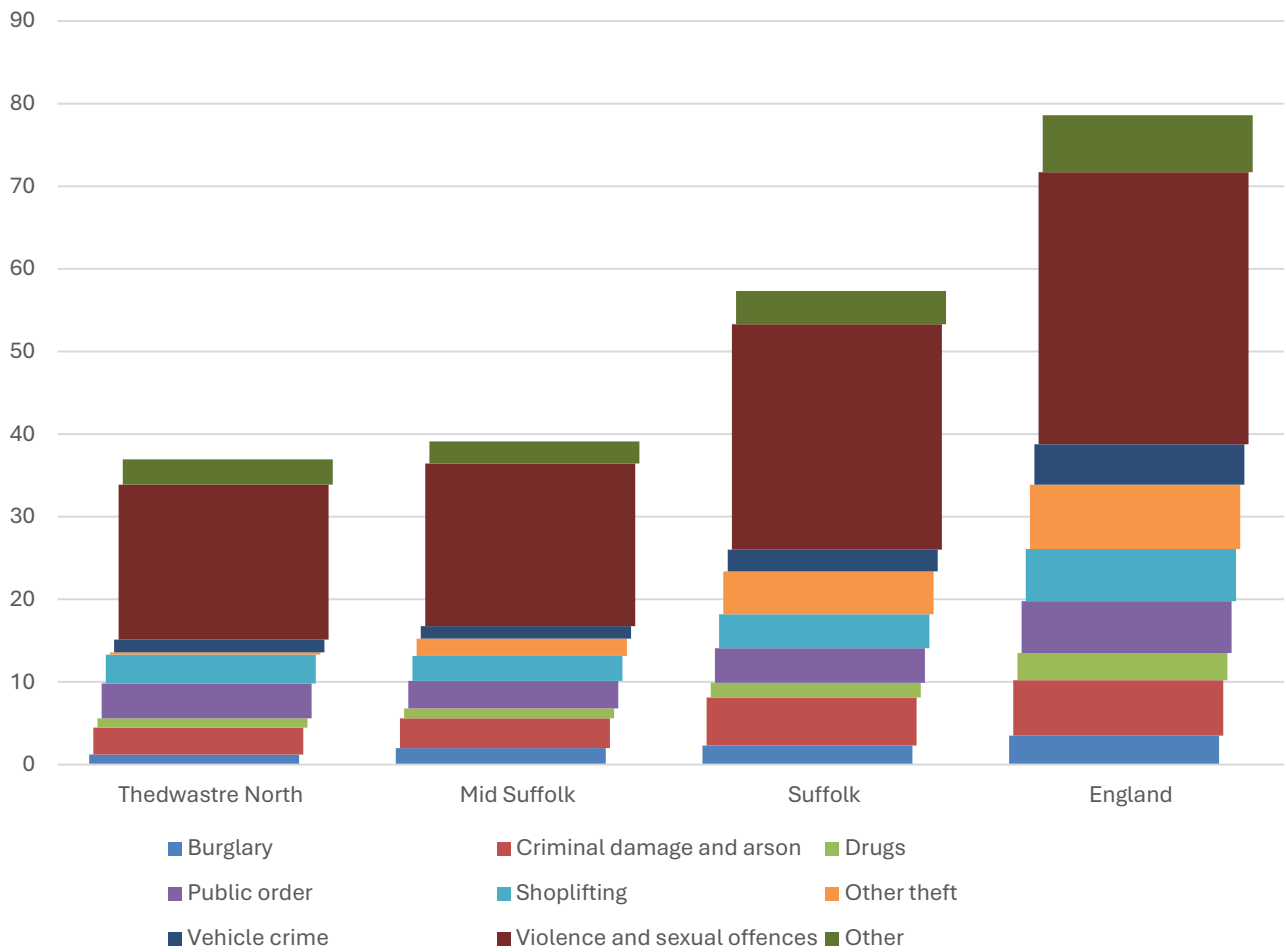
- The latest life expectancy at birth estimates for Thedwastre North are 88.2 for females (the England figure is 83.1), and 83 for males (compared to 79.3 nationally).
- Life expectancy for both males and females in the division are statistically significantly higher than the England figures.

Deaths, under 75 years, standardised mortality ratio



- Estimated standardised mortality ratios for early deaths from all causes, cancers, cardiovascular disease and causes considered preventable in Thedwastre North are below 100, indicating that deaths in under 75s due to these causes are lower than in England.
- Confidence intervals around these estimates are wide for local data, but the SMRs for deaths from all causes, cardiovascular disease and from causes considered preventable are statistically significantly lower than England.
- The standardised mortality ratio data shown here means that for every 100 early deaths from all causes across England as a whole, there are an estimated 59 comparable deaths in Thedwastre North.

Crime & Community Safety



- Crime levels in Thedwastre North are relatively low compared to the county average, and similar to the Mid Suffolk rate.
- In the year to the end of January 2026, there were 37 recorded crimes per 1,000 residents in the division, compared to 39 in Mid Suffolk, and 57 countywide.
- By far the most common type of crime recorded during this period was violence and sexual offences, which accounted for just over half of all recorded crimes in the division.

Additional Information

Parishes in Division

Badwell Ash
 Elmswell
 Great Ashfield
 Hunston
 Langham

Norton
 Stowlangtoft
 Westhorpe
 Woolpit
 Wyverstone

Data sources

Category	Indicator	Source
Demographic Profile	Quinary population table 2024	ONS 2024 mid-year population estimates
	Population pyramid 2024	ONS 2024 mid-year population estimates
	Ethnicity 2021	ONS 2021 Census
Economy	Employment by broad industrial sector 2024	ONS Business Register and Employment Survey via NOMIS
Labour market	Claimant count: The number of people claiming Jobseeker's Allowance plus those who claim Universal Credit who are out of work (% 16-64 population) January 2021-February 2026	DWP via NOMIS
Education	School information and attainment 2023-2025	Suffolk County Council CYP iHub
	% 16-17-year-olds NEET (Not in Employment, Education or Training) March 2021 to February 2026	Suffolk County Council CYP iHub via the Suffolk Observatory
Deprivation	Index of Multiple Deprivation 2025	Ministry of Housing, Communities and Local Government
Health	Life expectancy at birth 2016-2020 (2018-2020 for comparator areas)	Office for Health Improvement and Disparities
Health	Standardised mortality ratio for deaths from all causes, cancer, cardiovascular disease, and from causes considered preventable (under 75 years), 2016-2020 (2019-2023 for comparator areas). The standardised mortality ratio is the ratio of observed deaths in the study group to expected deaths in the general population	Office for Health Improvement and Disparities
Community Safety	Recorded crime rate per 1,000 resident population February 2025 to January 2026	Data.police.uk via the Suffolk Observatory

For more data and information about Thedwastre North Electoral Division, see the Suffolk Observatory www.suffolkobservatory.info

