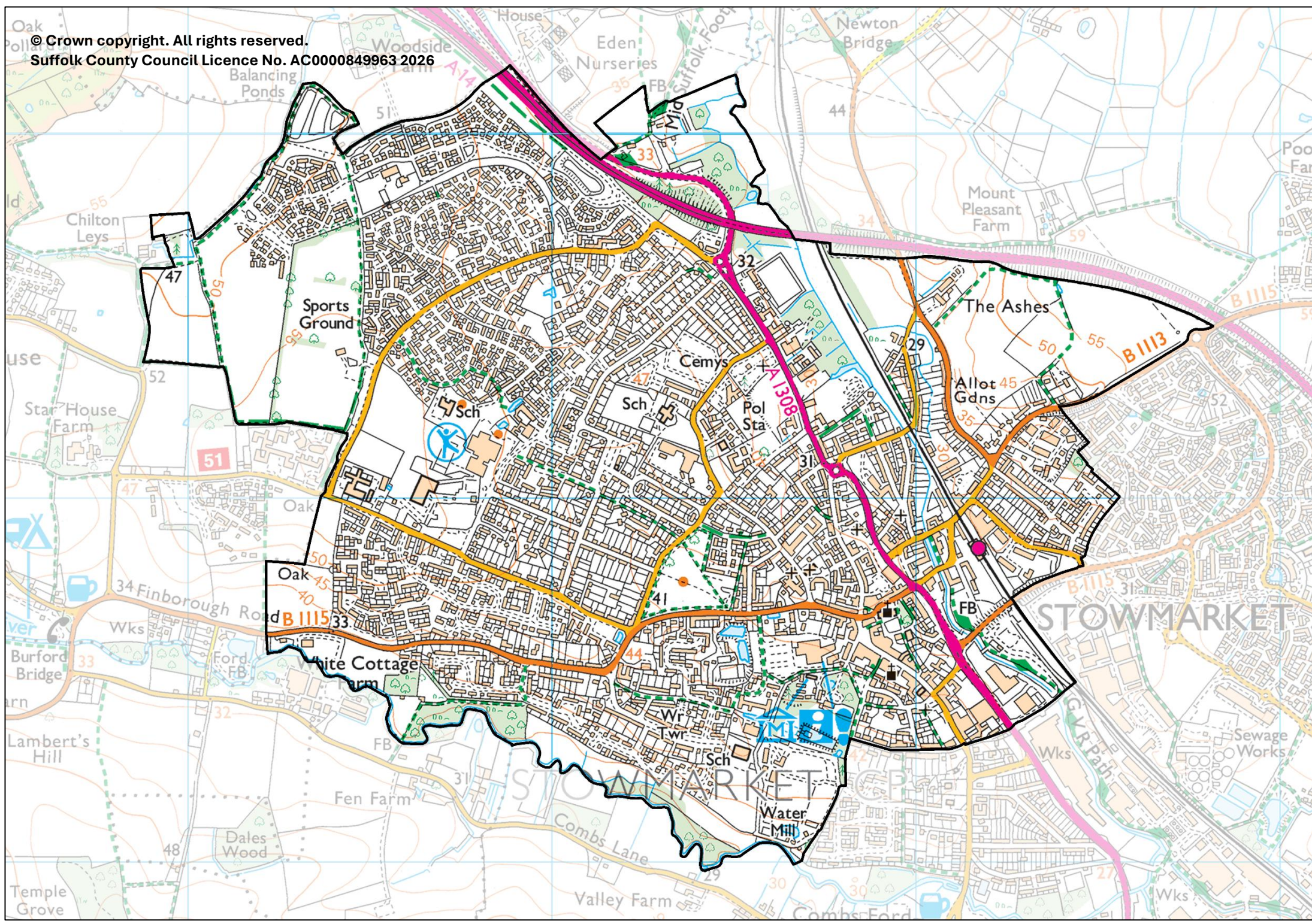


# Stowmarket West

County Electoral Division profile  
May 2026

This division comprises Chilton and St Peter's Wards in their entirety, and part of Stow Thorney Ward





STOWMARKET

STOWMARKET



## **Contents**

- Demographic Profile: Age & Ethnicity
- Economy and Labour Market
- Schools & NEET
- Index of Multiple Deprivation
- Health
- Crime & Community Safety
- Additional Information
- Data Sources

# Electoral Division Profiles: an introduction

These profiles have been produced to support elected members, constituents and other interested parties in understanding the demographic, economic, social and educational profile of their neighbourhoods. We have used the latest data available at the time of publication.

Much more data is available from national and local sources than is captured here, but it is hoped that the profile will be a useful starting point for discussion, where local knowledge and experience can be used to flesh out and illuminate the information presented here.

The profile can be used to help look at some fundamental questions e.g.

- Does the age profile of the population match or differ from the national profile?
- Is there evidence of the ageing profile of the county in all the wards in the Division or just some?
- How diverse is the community in terms of ethnicity?
- What is the impact of deprivation on families and residents?
- Does there seem to be a link between deprivation and school performance?
- What is the breakdown of employment sectors in the area?
- Is it a relatively healthy area compared to the rest of the district or county?
- What sort of crime is prevalent in the community?

A vast amount of additional data is available on the **Suffolk Observatory**

[www.suffolkobservatory.info](http://www.suffolkobservatory.info)

The Suffolk Observatory is a free online resource that contains all Suffolk's vital statistics; it is the one-stop-shop for information and intelligence about Suffolk. Through data, reports and maps, the Suffolk Observatory provides a comprehensive picture of the County. It is a great source for useful facts and figures that can be used for writing reports and presentations, informing strategic and business planning, preparing funding applications or supporting academic research. Data is presented around the key themes of population, children and young people, health and social care, housing, crime and community safety, deprivation, economy and employment and environment. All areas of the county are covered, right down to district, electoral division, ward and parish level, with information easily accessible in a variety of formats. You can also build your own reports for custom areas.

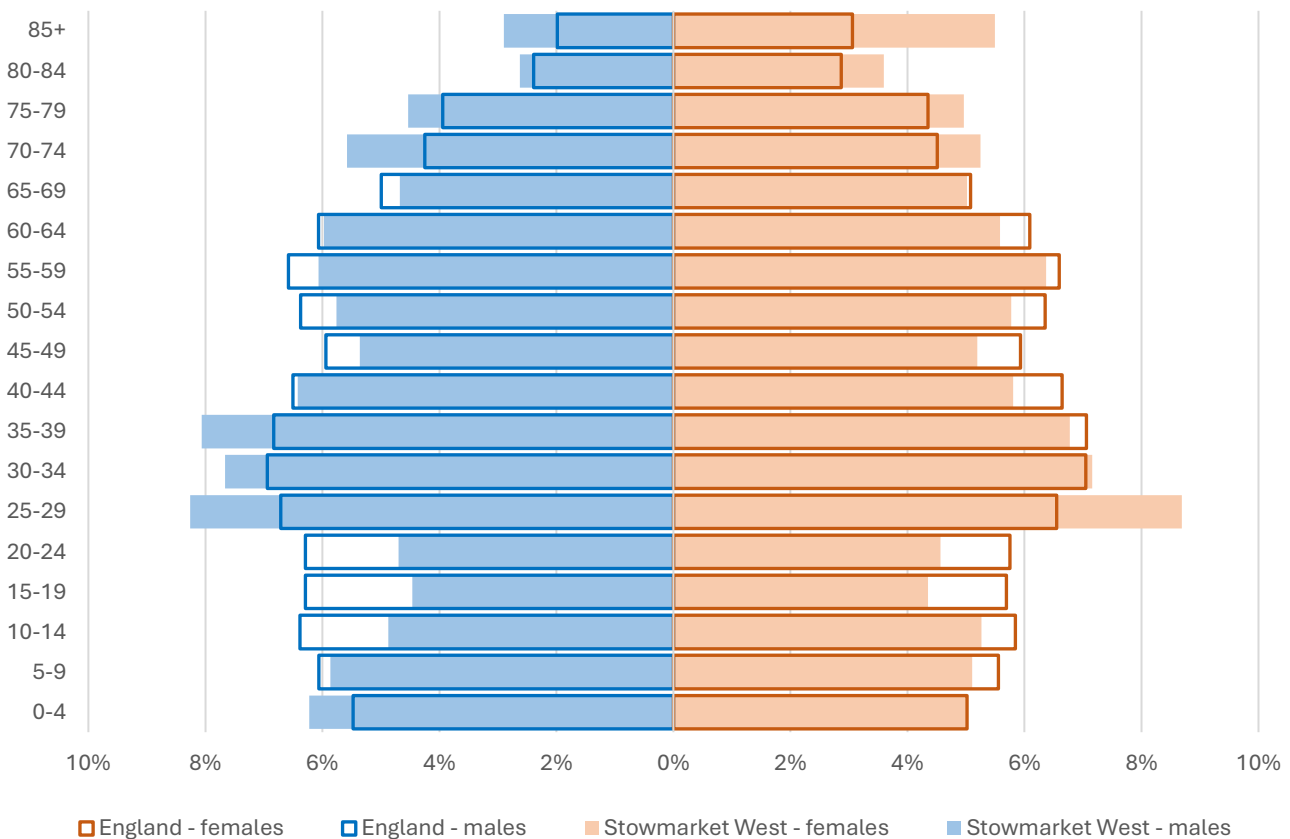
## Technical Notes:

1. Where electoral divisions do not exactly match the boundaries at which the data is available (e.g. ward, Output Area or Lower Super Output Area), we have adopted a "best-fit" approach to produce a dataset.
2. District, county and national level data is provided where possible to provide a context for comparisons.

# Demographic Profile - Age

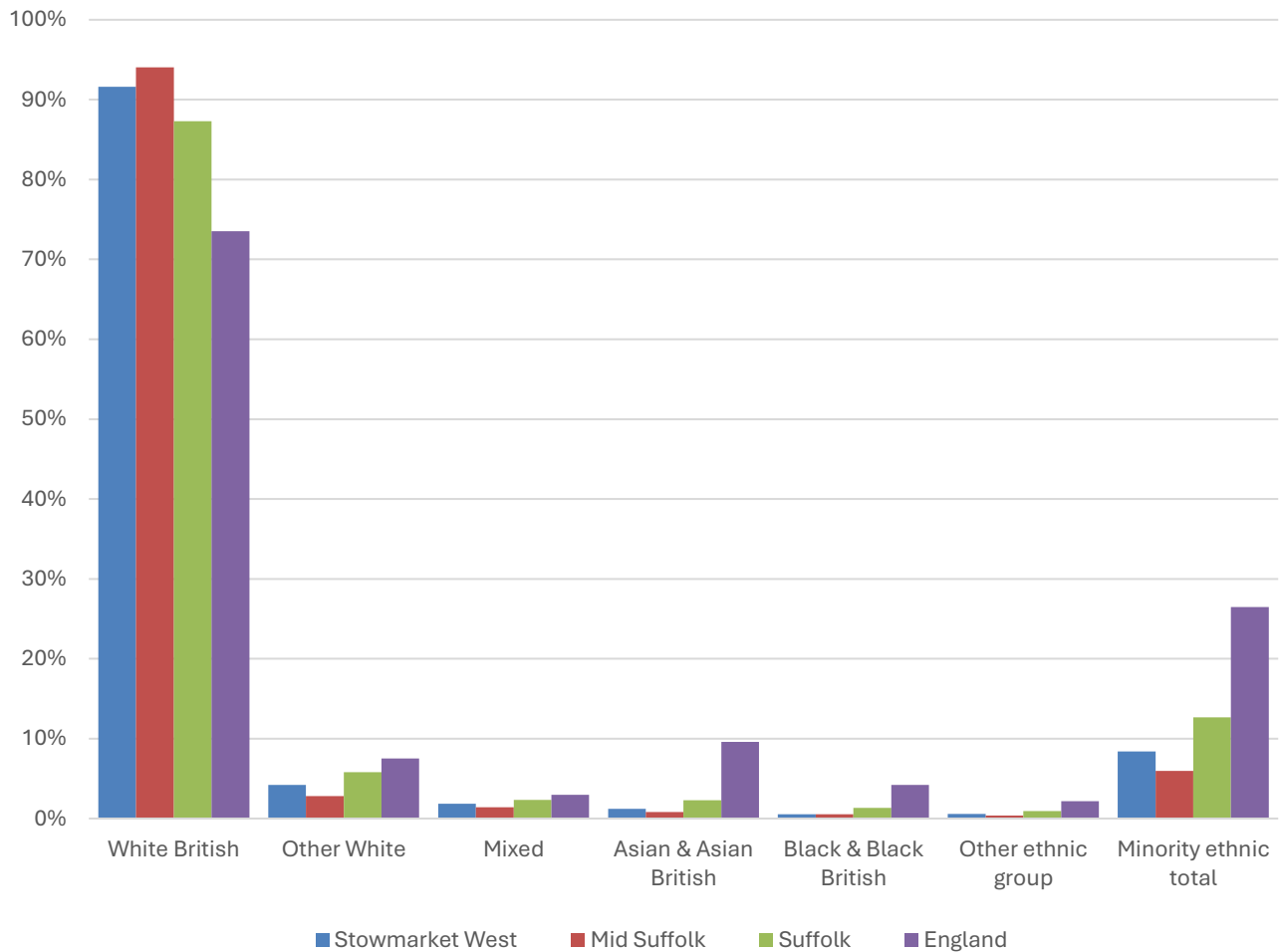
In mid-2024, the estimated population of Stowmarket West stood at 11,256, an increase of 22.7% over the past decade. The age structure of the component wards and the division as a whole is set out below.

	Stowmarket West Division	Chilton Ward	St Peter's Ward	Stow Thorney Ward
<b>All Ages</b>	<b>11,256</b>	7,602	3,356	298
<b>0-4</b>	<b>633</b>	464	153	16
<b>5-9</b>	<b>617</b>	476	124	17
<b>10-14</b>	<b>571</b>	433	119	19
<b>15-19</b>	<b>496</b>	328	153	15
<b>20-24</b>	<b>521</b>	362	142	17
<b>25-29</b>	<b>954</b>	662	267	25
<b>30-34</b>	<b>834</b>	597	213	24
<b>35-39</b>	<b>834</b>	607	203	24
<b>40-44</b>	<b>688</b>	465	196	27
<b>45-49</b>	<b>594</b>	382	190	22
<b>50-54</b>	<b>649</b>	433	192	24
<b>55-59</b>	<b>700</b>	454	232	14
<b>60-64</b>	<b>650</b>	424	206	20
<b>65-69</b>	<b>546</b>	327	212	7
<b>70-74</b>	<b>609</b>	378	226	5
<b>75-79</b>	<b>535</b>	339	185	11
<b>80-84</b>	<b>351</b>	201	143	7
<b>85+</b>	<b>474</b>	270	200	4



- The age pyramid for Stowmarket West division is quite unusual. It shows a larger-than-average proportion of young adults aged 25-39 (particularly males), but the proportion of children is only average at most.
- There is also a particularly high proportion of residents aged 85 and over.
- The most common age group in the division is 25-29-year-olds (8.5% of the local population), followed by 30-34-year-olds (7.4%), and 30-34-year-olds (7.4%).
- Just over a fifth (22.3%) of the population of Stowmarket West is of retirement age. The England figure is 18.7%.

# Demographic Profile - Ethnicity

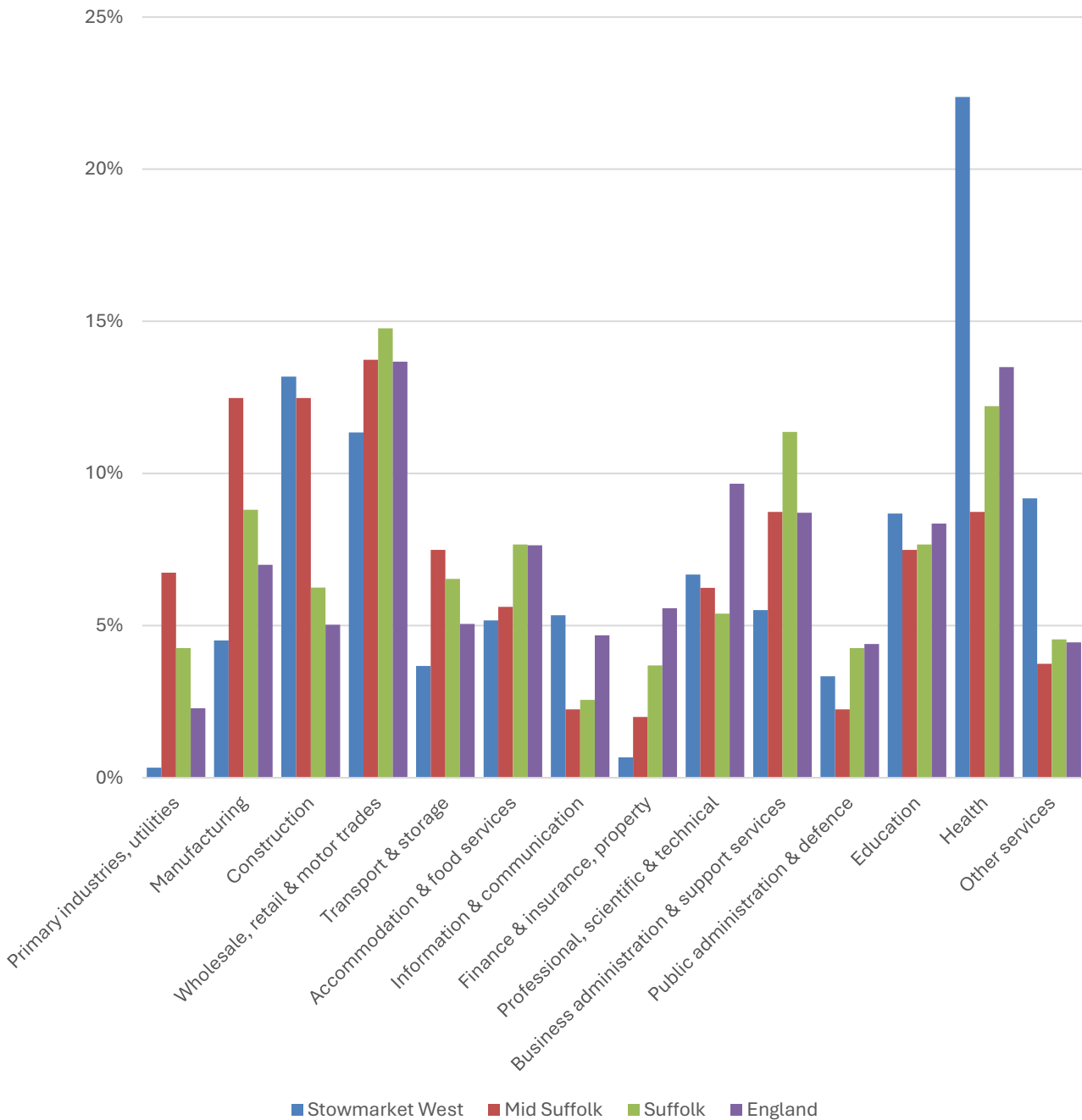


- According to the latest data (2021 Census), 91.6% of the population of Stowmarket West is White British.
- There were 871 (8.4%) residents from minority ethnic groups in the division, around two thirds of the proportion in Suffolk overall, and a third of the England average.
- Stowmarket East's population is more ethnically diverse than that of Mid Suffolk as a whole, with most minority ethnic groups making up a slightly larger proportion of residents in the division compared to the district overall. The Other White community in particular is relatively large compared to Mid Suffolk as a whole.

	All people		White British		Other White		Mixed		Asian and Asian British		Black and Black British		Other Ethnic Group		Total minority ethnic population	
	Count	%	Count	%	Count	%	Count	%	Count	%	Count	%	Count	%	Count	%
Stowmarket West	10,392		9,521	91.6	437	4.2	194	1.9	127	1.2	54	0.5	59	0.6	871	8.4
Mid Suffolk	102,701		96,581	94.0	2,882	2.8	1,463	1.4	821	0.8	553	0.5	401	0.4	6,120	6.0
Suffolk	760,687		664,205	87.3	44,066	5.8	17,807	2.3	17,483	2.3	10,168	1.3	6,958	0.9	96,482	12.7
England				73.5		7.5		3.0		9.6		4.2		2.2		26.5

# Economy

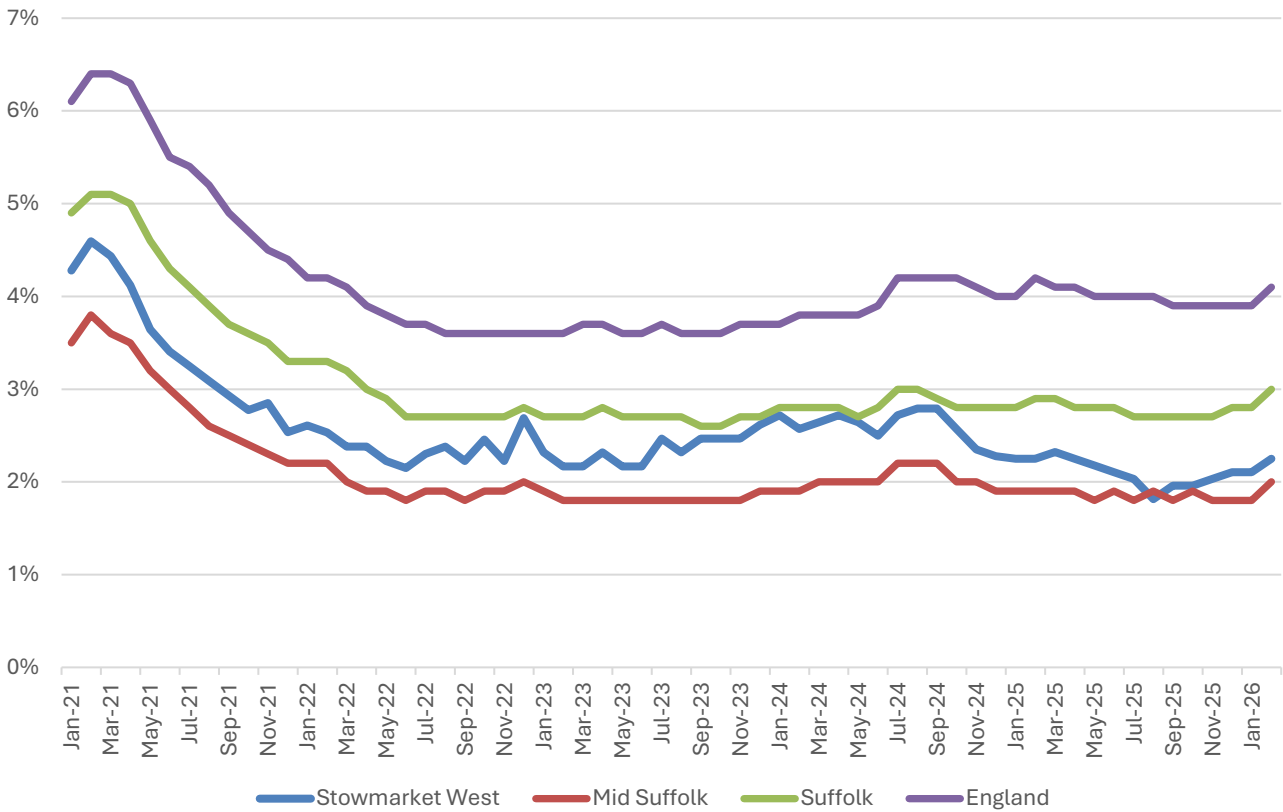
There are around 3,000 people employed in Stowmarket West.



- Health is by far the most important sector in Stowmarket West in terms of employment, providing more than 1 in 5 jobs in the division.
- Construction (13.2% of local employment) and wholesale, retail and motor trades also account for a large proportion of jobs in the division.
- A further 9.2% of jobs in Stowmarket West are classified in the other services sector. This sector primarily includes creative and cultural industries, and gambling, betting and sports activities.

# Labour Market

## Out-of-work benefit claimant rate



- In common with Mid Suffolk, Suffolk and England as a whole, Stowmarket West saw a steady decline in the proportion of the working age population claiming out-of-work benefits during 2021 and into 2022 following a peak during the COVID-19 pandemic.
- Since then, the claimant rate has generally remained between 2% and 3%.
- In February 2026 (the latest available data), 2.2% of 16-64-year-olds were claiming out-of-work benefits in the division.
- The claimant rate in the division tends to be slightly above the Mid Suffolk average, but below the county and national benchmarks.

# Schools

## School Information

### Schools in the Division

Name	Phase	Academy Status	No. pupils	Average cohort size at:			
				Foundation Stage (age 4-7)	KS2 (age 7-11)	KS4 (age 14-16)	KS5 (age 16-18)
Abbot's Hall Community Primary School	Primary	AC	366	43	58		
Chilton Community Primary School	Primary	AC	133	20	26		
Grace Cook Primary School	Primary	F	203	22			
Wood Ley Community Primary School	Primary	LA	307	44	45		
Stowmarket High School	Secondary	AS	901			163	
Olive AP Academy Suffolk	Pupil referral unit/ Alternative provision	AS	2				

Academy Status key: AS = Academy Sponsored, AC = Academy Converter, LA = LA Maintained, F = Free

### Ofsted information

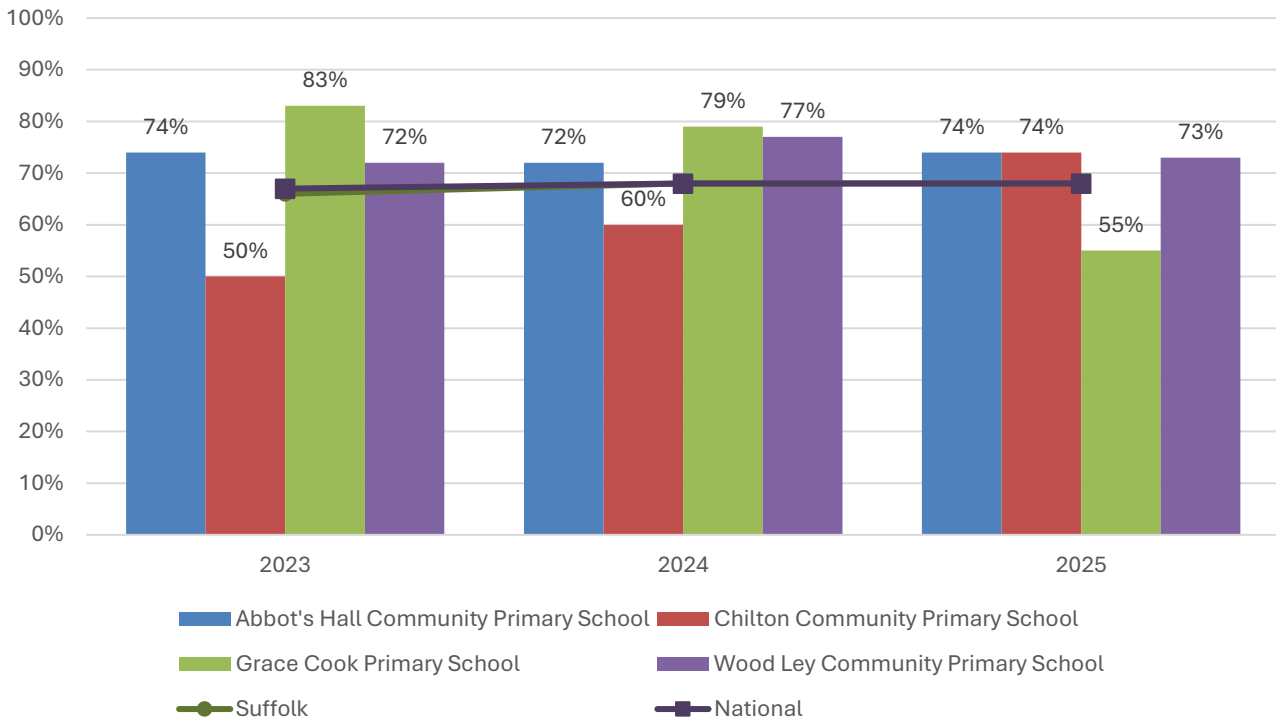
Name	Overall effectiveness	Effectiveness of leadership and management	Behaviour and attitudes	Personal development	Early years provision (if applicable)	Quality of education	Last inspection date
Abbot's Hall Community Primary School	2	2	9	9	1	9	01/02/2018
Chilton Community Primary School	2	2	9	9	2	9	13/12/2017
Grace Cook Primary School	5	2	2	2	1	2	04/02/2025
Wood Ley Community Primary School	2	2	9	9	2	9	16/03/2011
Stowmarket High School	5	1	2	2	9	2	10/06/2025
Olive AP Academy Suffolk	2	2	2	2	9	2	17/01/2023

Code	Judgement	Code	Judgement
0	Insufficient evidence	SM	Special measures
1	Outstanding	8	Does not apply
2	Good	9	No judgement
3	Requires improvement	Null	No data available
4	Inadequate	Not judged	Not judged
SWK	Serious weaknesses	5	No overall grade

# School Attainment

## Foundation Stage Profile (reception)

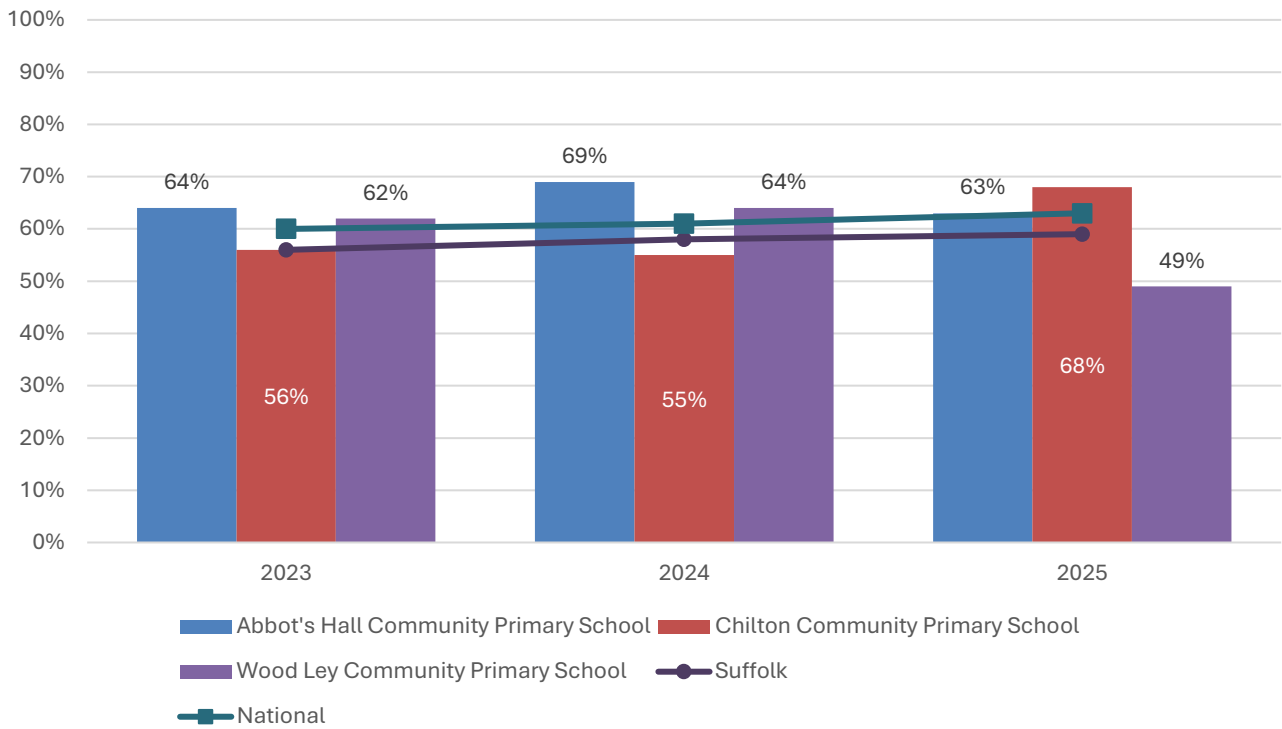
% pupils achieving Good Level of Development (GLD)



- In 2025, the percentage of pupils to achieve a Good Level of Development (GLD) at Foundation Stage FS) was 74% at Abbot’s Hall and Chilton Community Primary Schools, 55% at Grace Cook Primary School, 73% at Wood Ley Community Primary School, and 68% nationally.
- The percentage of pupils achieving a Good Level of Development at Stowmarket Foundation Stage attainment at Abbot’s Hall and Wood Ley Community Primary Schools has been consistently above the county and national figure in each of the last three years.
- Attainment has improved year on year at Chilton Community Primary School, surpassing the national figure in 2025.
- Grace Cook Primary School recorded above average FS attainment in 2023 and 2024, before a fall in 2025.

## Key Stage 2 (age 11)

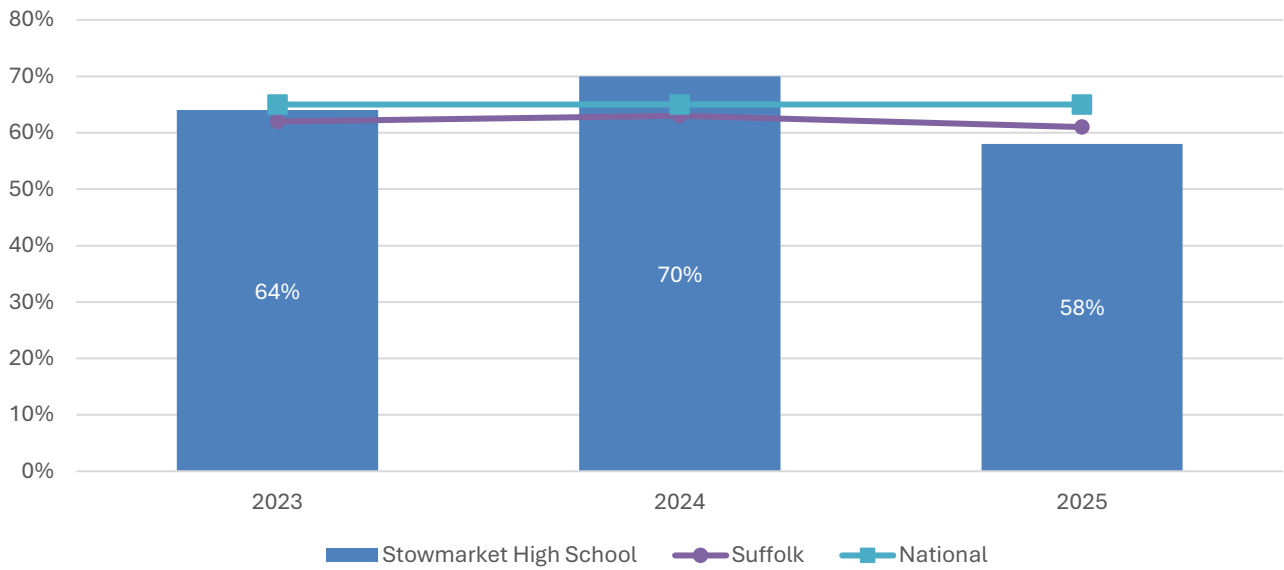
% pupils achieving the Expected Level or better in Reading, Writing and Mathematics



- In 2025, the percentage of pupils to achieve the expected level or better in reading, writing and mathematics at Key Stage 2 was 63% at Abbot's Hall Community Primary School, 68% at Chilton Community Primary School, 49% at Wood Ley Community Primary School, 59% across Suffolk, and 63% nationally.
- No school in the division has recorded consistently above average KS2 attainment over the last three years.

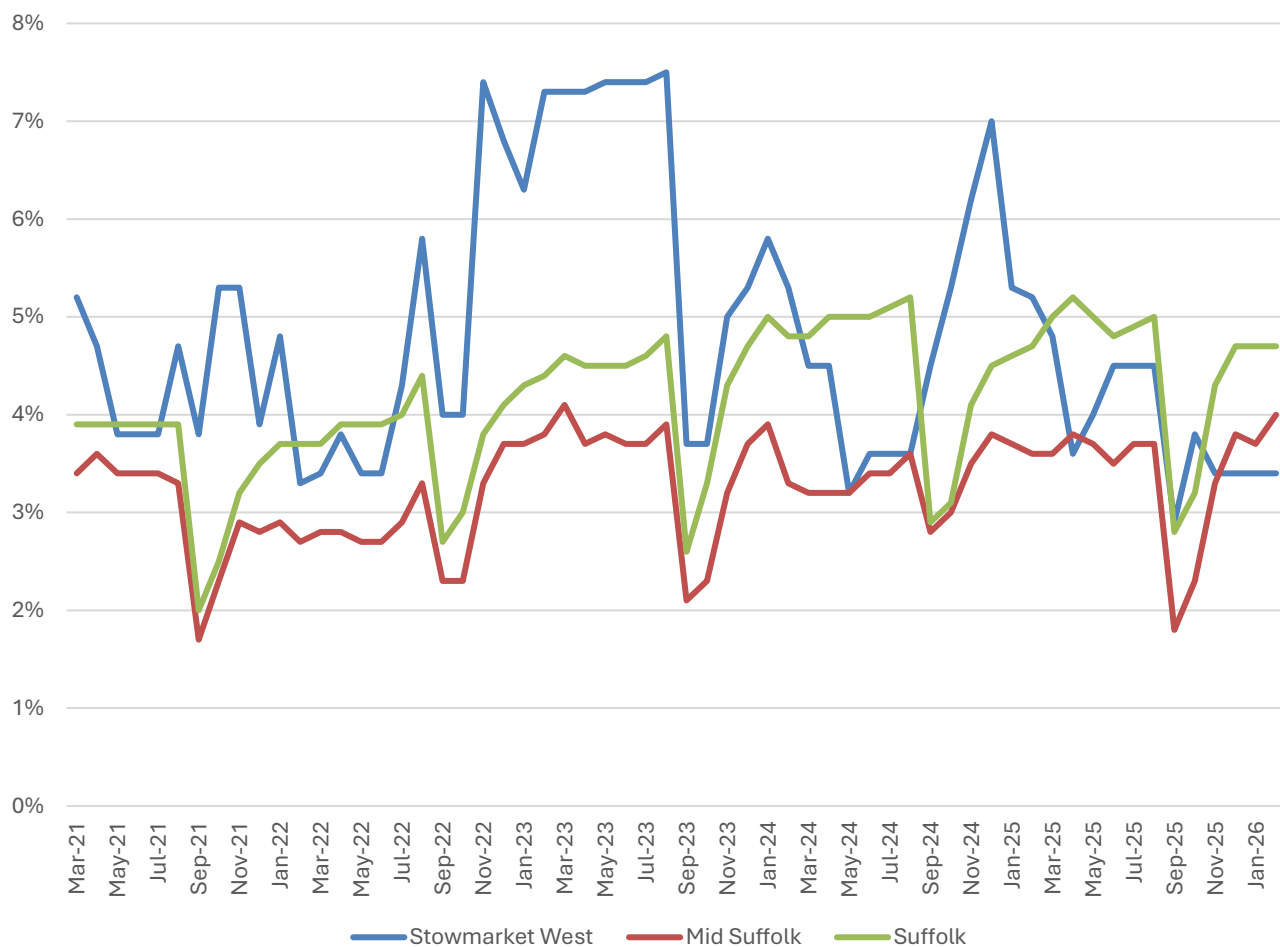
### Key Stage 4 (GCSE) (age 16)

% pupils achieving level 4-9 in English and Mathematics



- According to the most recent data, the percentage of pupils achieving level 4-9 in English and mathematics at Key Stage 4 at Stowmarket High was three percentage points below the county figure, and seven percentage points below the national benchmark.
- Key Stage 4 attainment at Stowmarket High School was above the national benchmark in 2024, and only a single percentage point below it in 2023.

## NEET % (Not in Education, Employment or Training)



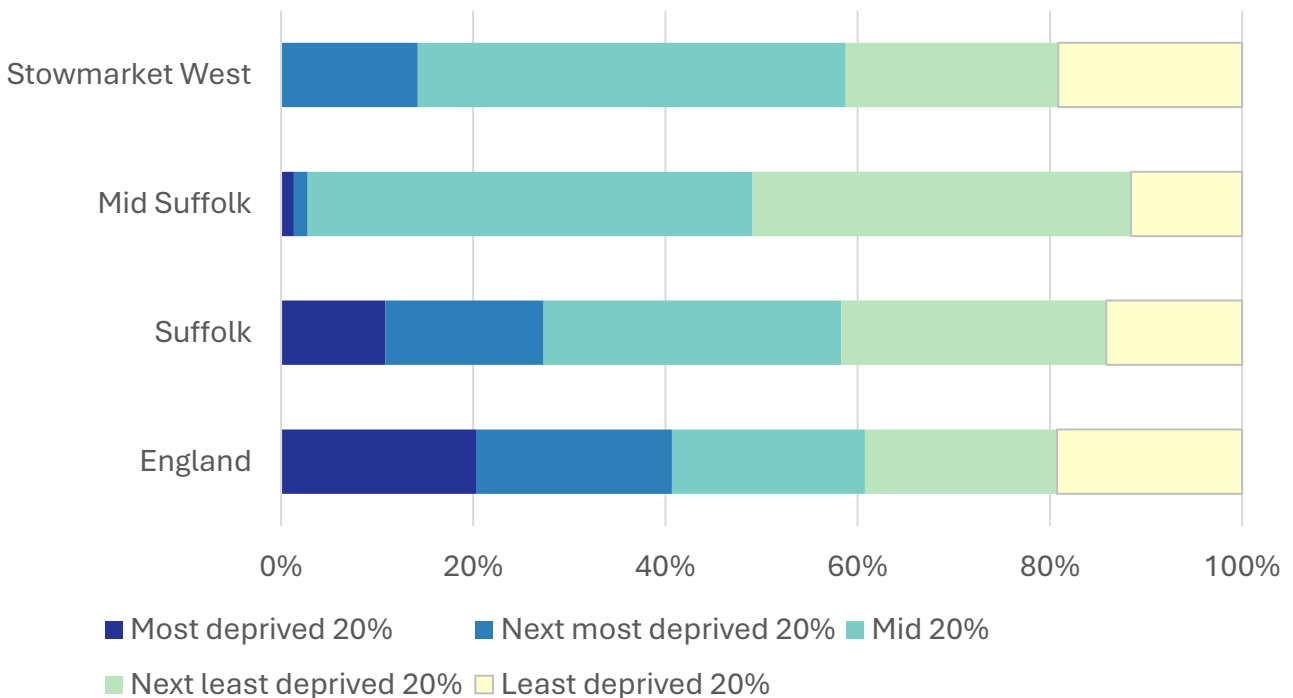
- In February 2026, 3.4% of 16-17-year-olds in Stowmarket West were classified as NEET (not in education, employment or training).
- NEET levels fluctuate considerably according to the time of year and due to small numbers of 16-17-year-olds in the division, typically being at their lowest at the beginning of a new school year.
- In Stowmarket West, the proportion of children who are NEET was generally above the district and county figures up to the start of 2024. Since then, it has remained at or above the Mid Suffolk rate apart from the most recent two data points at the time of writing, but has fluctuated around the Suffolk figure.

## Index of Multiple Deprivation (IMD) 2025 (see map overleaf)

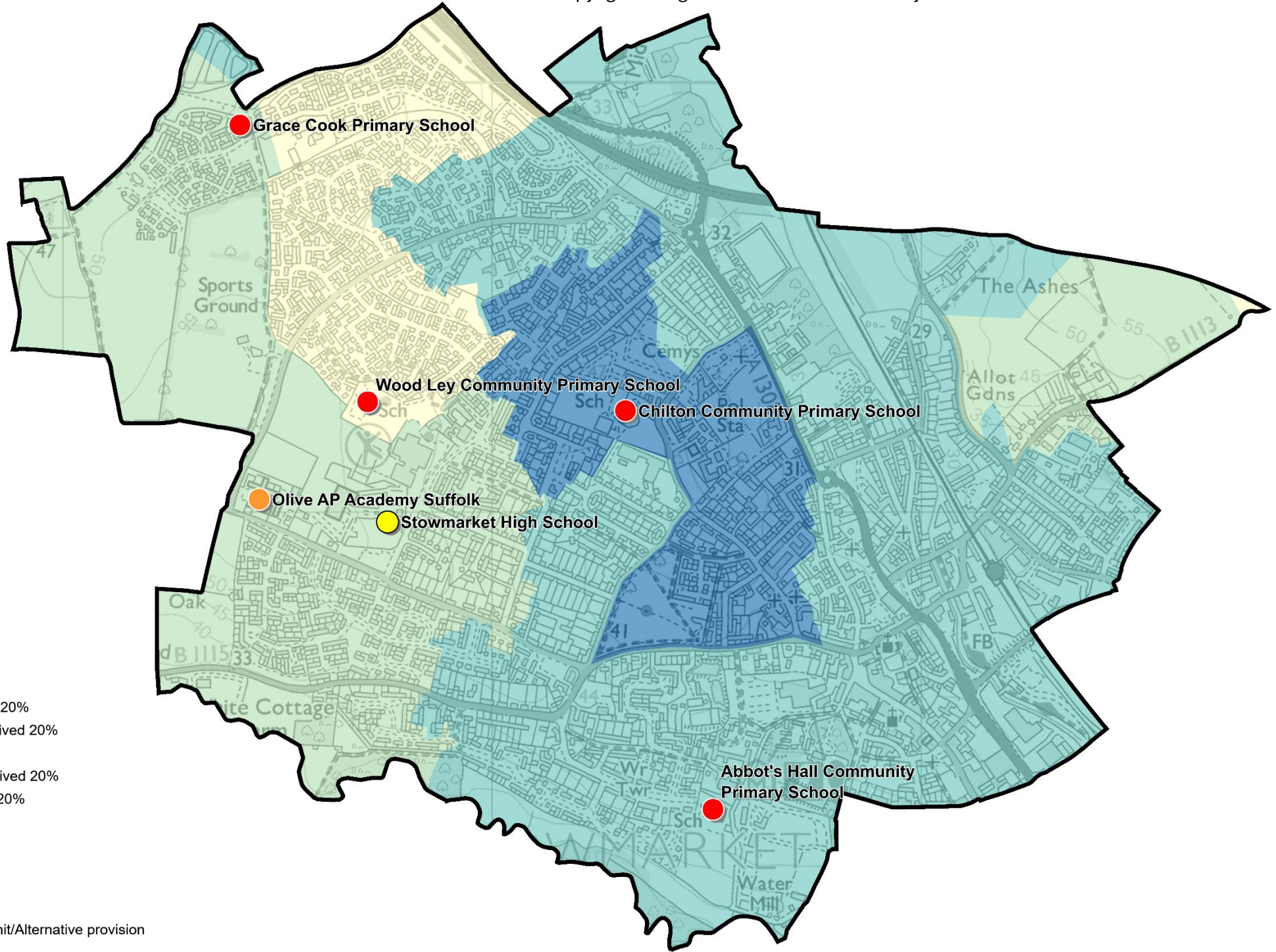
The IMD combines a number of indicators, chosen to cover a range of economic, social and housing issues, into a single deprivation score for each small area in England. This allows each area to be ranked relative to one another according to their level of deprivation. Small areas (Lower Super Output Areas, average population 1,700) are most commonly described as being in 1 of 5 quintile bands. The bottom quintile represents the 20% of areas that are the most deprived in England; these are shaded pale yellow on the map. The top quintile represents the least deprived areas in England and is shaded dark blue.

The Index is widely used to analyse patterns of deprivation, identify areas that would benefit from special initiatives or programmes and as a tool to determine eligibility for specific funding streams.

The chart below shows the percentage of the population of the division that live in areas ranked among each of the five quintiles of deprivation, alongside the district, county and England comparators.



- The 2025 IMD shows that deprivation levels in Stowmarket West are varied, with parts of the division ranked in four of the five deprivation quintiles in England.
- Just under half of the population of the division live in areas that are ranked in the middle quintile of deprivation nationally.
- About two fifths of the Stowmarket West population reside in neighbourhoods that are among the least deprived two quintiles; 19% in the least deprived, and 22% in the second least deprived.
- Part of central Stowmarket West (home to 14% of the division's population) is ranked in the second most deprived quintile of deprivation.
- See the map overleaf for the distribution of IMD 2025 results across the division.



**IMD 2025 quintile**

- Least deprived 20%
- Next least deprived 20%
- Mid 20%
- Next most deprived 20%
- Most deprived 20%

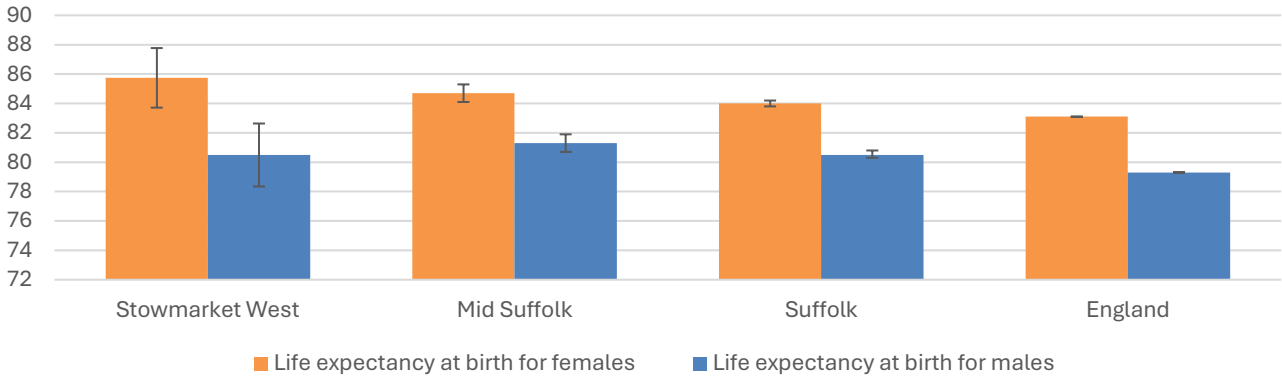
**School Phase**

- Primary
- Secondary
- Special
- Pupil referral unit/Alternative provision
- Nursery

# Health

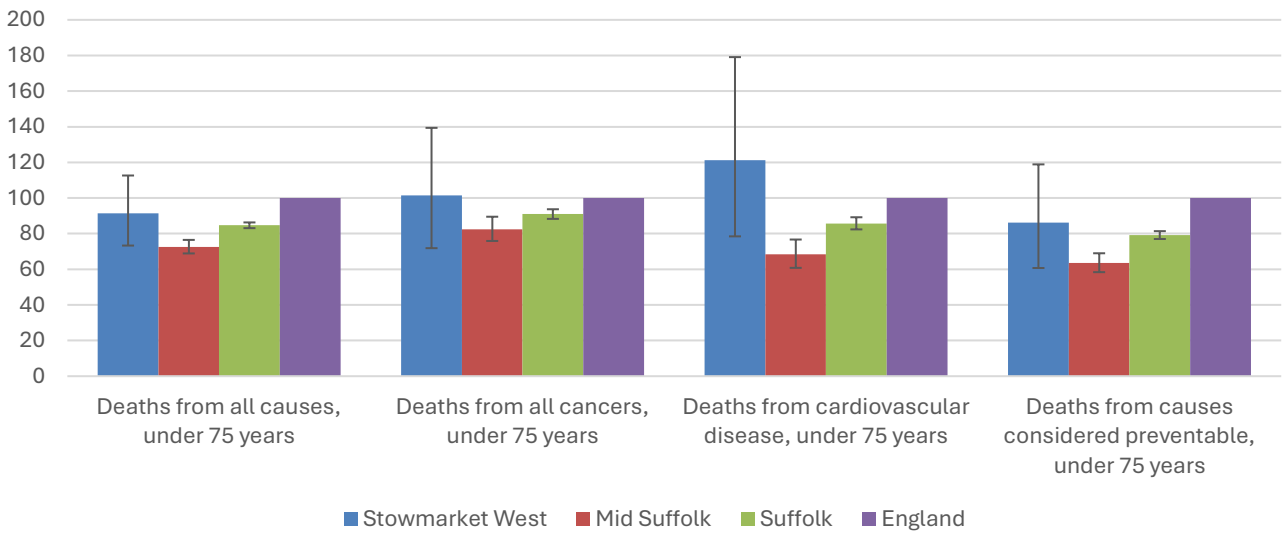
The local data used here is based on relatively small numbers. The confidence limits provide an indication of the reliability of the data. The 95% confidence intervals utilised on the chart provide a range within which there is 95% chance of the true result lying.

## Life expectancy at birth



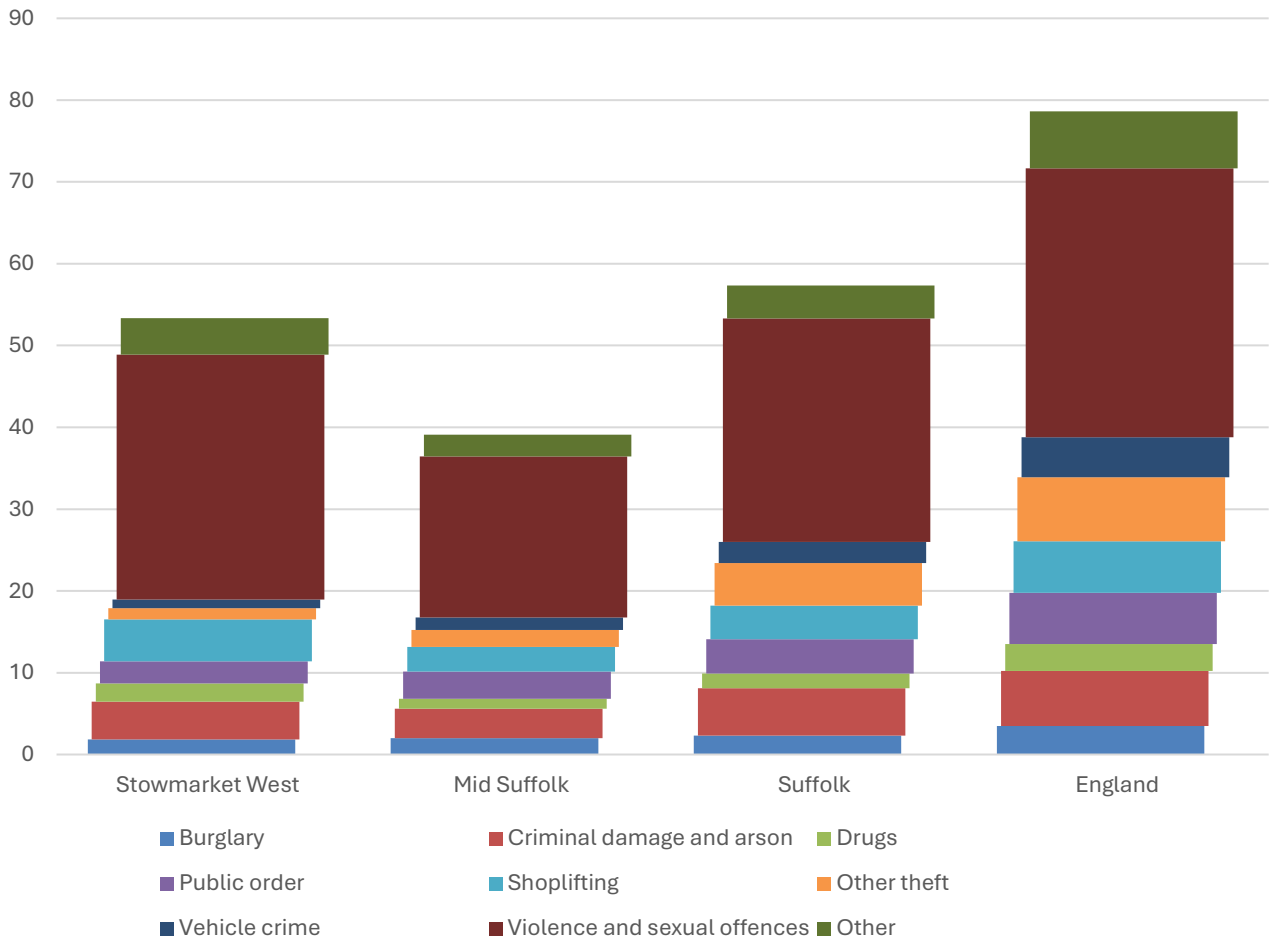
- The latest life expectancy at birth estimates for Stowmarket West are 85.7 for females (the England figure is 83.1), and 80.5 for males (compared to 79.3 nationally).
- Life expectancy at birth for females is statistically significantly higher than the England figure, while for males it is statistically similar.

## Deaths, under 75 years, standardised mortality ratio



- Estimated standardised mortality ratios for early deaths from all causes and causes considered preventable in Stowmarket West are below 100, indicating that deaths in under 75s due to these causes are lower than in England.
- Confidence intervals around these estimates are wide for local data, however, and early deaths from all of the causes shown here are statistically similar in the division to Mid Suffolk, Suffolk, and England.
- The standardised mortality ratio data shown here means that for every 100 early deaths from all causes across England as a whole, there are an estimated 91 comparable deaths in Stowmarket West.

# Crime & Community Safety



- Recorded crime in Stowmarket West is similar to the county rate and higher than that for Mid Suffolk.
- In the year to the end of January 2026, there were 53 recorded crimes per 1,000 residents in the division, compared to 39 in Mid Suffolk, and 57 countywide.
- The breakdown of crimes by type is similar to that for Suffolk, but there is a higher rate of drug offences in Stowmarket West, and fewer other theft offences.
- By far the most common type of crime recorded during this period was violence and sexual offences, which accounted for more than half of all recorded crimes in the division.

## Additional Information

### Parishes in Division

Stowmarket (part)

## Data sources

Category	Indicator	Source
Demographic Profile	Quinary population table 2024	ONS 2024 mid-year population estimates
	Population pyramid 2024	ONS 2024 mid-year population estimates
	Ethnicity 2021	ONS 2021 Census
Economy	Employment by broad industrial sector 2024	ONS Business Register and Employment Survey via NOMIS
Labour market	Claimant count: The number of people claiming Jobseeker's Allowance plus those who claim Universal Credit who are out of work (% 16-64 population) January 2021-February 2026	DWP via NOMIS
Education	School information and attainment 2023-2025	Suffolk County Council CYP iHub
	% 16-17-year-olds NEET (Not in Employment, Education or Training) March 2021 to February 2026	Suffolk County Council CYP iHub via the Suffolk Observatory
Deprivation	Index of Multiple Deprivation 2025	Ministry of Housing, Communities and Local Government
Health	Life expectancy at birth 2016-2020 (2018-2020 for comparator areas)	Office for Health Improvement and Disparities
Health	Standardised mortality ratio for deaths from all causes, cancer, cardiovascular disease, and from causes considered preventable (under 75 years), 2016-2020 (2019-2023 for comparator areas). The standardised mortality ratio is the ratio of observed deaths in the study group to expected deaths in the general population	Office for Health Improvement and Disparities
Community Safety	Recorded crime rate per 1,000 resident population February 2025 to January 2026	Data.police.uk via the Suffolk Observatory

For more data and information about Stowmarket West Electoral Division, see the Suffolk Observatory [www.suffolkobservatory.info](http://www.suffolkobservatory.info)

