

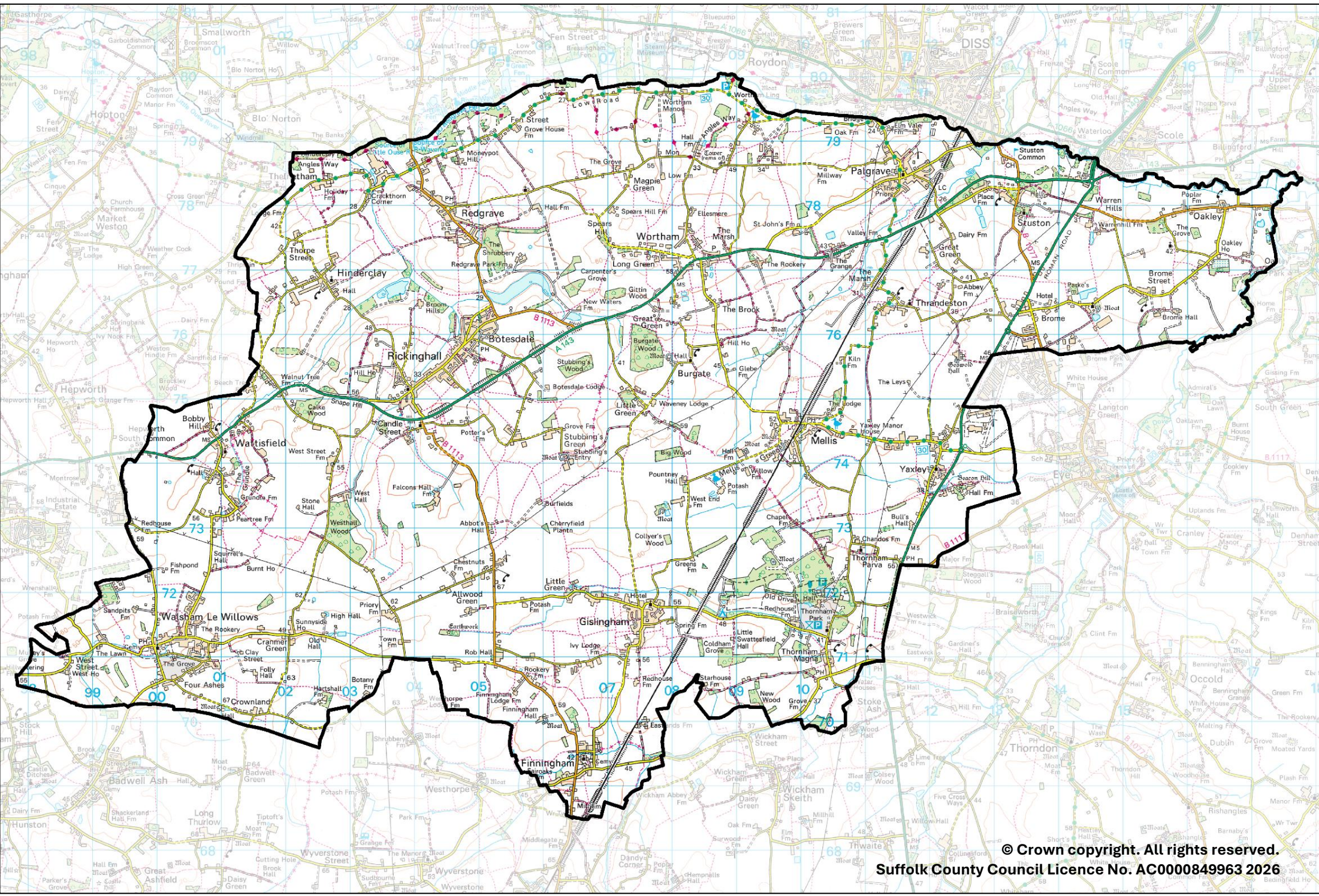
Hartismere

County Electoral Division profile

May 2026

This division comprises Rickingham Ward in its entirety, and parts of Bacton, Gislingham, Palgrave, and Walsham-le-Willows Wards





Contents

- Demographic Profile: Age & Ethnicity
- Economy and Labour Market
- Schools & NEET
- Index of Multiple Deprivation
- Health
- Crime & Community Safety
- Additional Information
- Data Sources

Electoral Division Profiles: an introduction

These profiles have been produced to support elected members, constituents and other interested parties in understanding the demographic, economic, social and educational profile of their neighbourhoods. We have used the latest data available at the time of publication.

Much more data is available from national and local sources than is captured here, but it is hoped that the profile will be a useful starting point for discussion, where local knowledge and experience can be used to flesh out and illuminate the information presented here.

The profile can be used to help look at some fundamental questions e.g.

- Does the age profile of the population match or differ from the national profile?
- Is there evidence of the ageing profile of the county in all the wards in the Division or just some?
- How diverse is the community in terms of ethnicity?
- What is the impact of deprivation on families and residents?
- Does there seem to be a link between deprivation and school performance?
- What is the breakdown of employment sectors in the area?
- Is it a relatively healthy area compared to the rest of the district or county?
- What sort of crime is prevalent in the community?

A vast amount of additional data is available on the **Suffolk Observatory**

www.suffolkobservatory.info

The Suffolk Observatory is a free online resource that contains all Suffolk's vital statistics; it is the one-stop-shop for information and intelligence about Suffolk. Through data, reports and maps, the Suffolk Observatory provides a comprehensive picture of the County. It is a great source for useful facts and figures that can be used for writing reports and presentations, informing strategic and business planning, preparing funding applications or supporting academic research. Data is presented around the key themes of population, children and young people, health and social care, housing, crime and community safety, deprivation, economy and employment and environment. All areas of the county are covered, right down to district, electoral division, ward and parish level, with information easily accessible in a variety of formats. You can also build your own reports for custom areas.

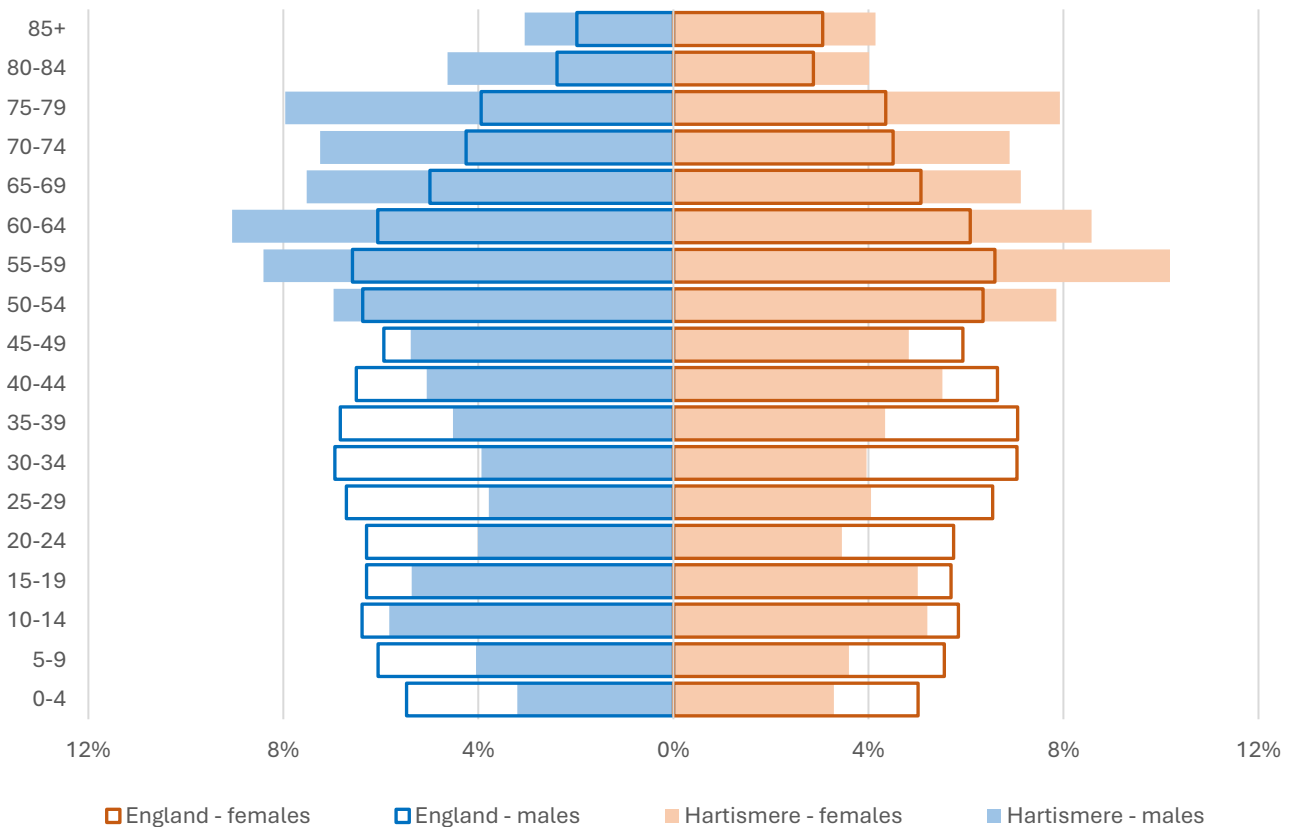
Technical Notes:

1. Where electoral divisions do not exactly match the boundaries at which the data is available (e.g. ward, Output Area or Lower Super Output Area), we have adopted a "best-fit" approach to produce a dataset.
2. District, county and national level data is provided where possible to provide a context for comparisons.

Demographic Profile - Age

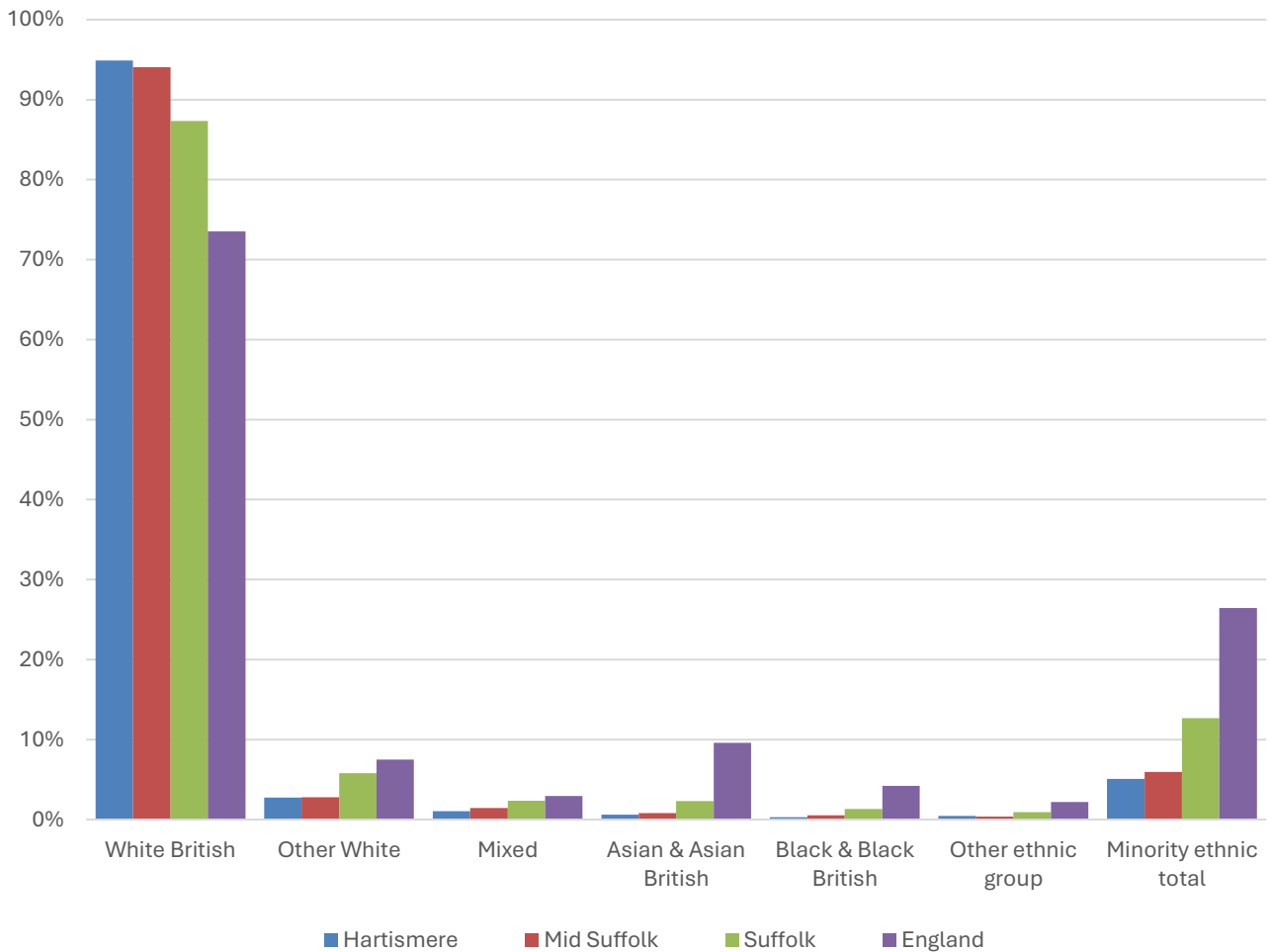
In mid-2024, the estimated population of Hartismere stood at 10,964, an increase of 6.4% over the past decade. The age structure of the component wards and the division as a whole is set out below.

	Hartismere Division	Rickinghall Ward	Gislingham Ward	Palgrave Ward	Walsham-le-Willows Ward	Bacton Ward
All Ages	10,964	3,016	2,959	2,545	1,936	508
0-4	356	108	108	54	71	15
5-9	419	126	109	75	89	20
10-14	605	156	158	156	109	26
15-19	569	151	161	127	101	29
20-24	409	104	113	106	71	15
25-29	430	115	120	100	86	9
30-34	433	104	112	103	93	21
35-39	486	142	123	101	98	22
40-44	580	163	133	151	109	24
45-49	560	141	136	142	119	22
50-54	813	198	242	190	142	41
55-59	1,020	265	298	212	184	61
60-64	966	254	293	215	155	49
65-69	803	222	200	199	143	39
70-74	775	247	207	193	92	36
75-79	871	257	245	195	131	43
80-84	474	145	111	124	78	16
85+	395	118	90	102	65	20



- The age pyramid for Hartismere division shows a considerably higher proportion of people aged 50 and over than seen in England as a whole.
- The most common age group in the division is 55-59-year-olds (9.3% of the local population), followed by 60-64-year-olds (8.8%), and 75-79-year-olds (7.9%).
- Just over 30% of the population of Hartismere is of retirement age. The England figure is 18.7%.
- There is a particularly low proportion of young adults aged 20-39 in the division.

Demographic Profile - Ethnicity

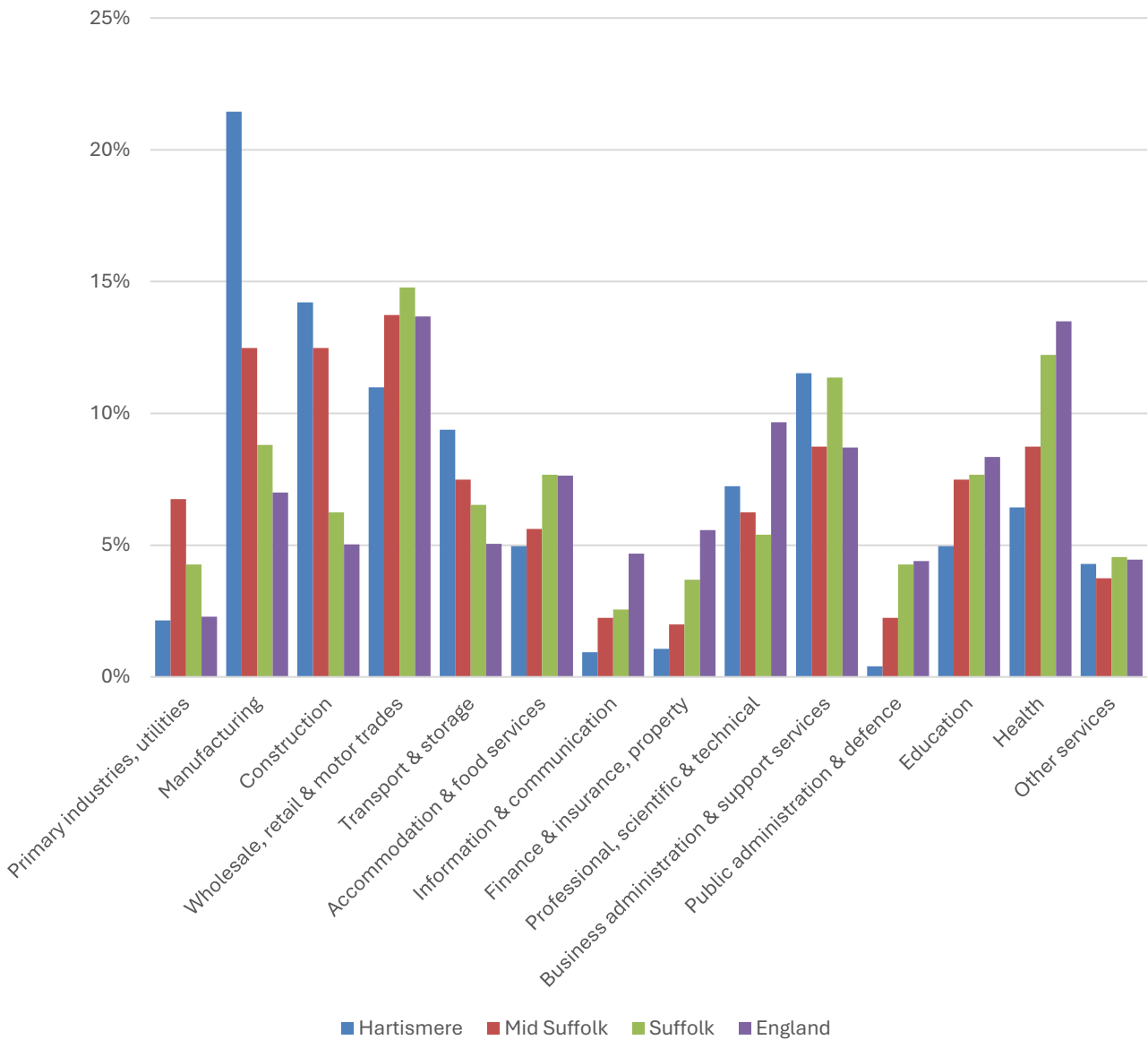


- According to the latest data (2021 Census), 94.9% of the population of Hartismere is White British.
- There were 538 (5.1%) residents from minority ethnic groups in the division, less than half the proportion in Suffolk overall, and a fifth of the England average.
- Hartismere has a broadly similar ethnic diversity profile to Mid Suffolk district.

	All people		White British		Other White		Mixed		Asian and Asian British		Black and Black British		Other Ethnic Group		Total minority ethnic population	
	Count	%	Count	%	Count	%	Count	%	Count	%	Count	%	Count	%	Count	%
Hartismere	10,551		10,013	94.9	288	2.7	111	1.1	63	0.6	30	0.3	46	0.4	538	5.1
Mid Suffolk	102,701		96,581	94.0	2,882	2.8	1,463	1.4	821	0.8	553	0.5	401	0.4	6,120	6.0
Suffolk	760,687		664,205	87.3	44,066	5.8	17,807	2.3	17,483	2.3	10,168	1.3	6,958	0.9	96,482	12.7
England				73.5		7.5		3.0		9.6		4.2		2.2		26.5

Economy

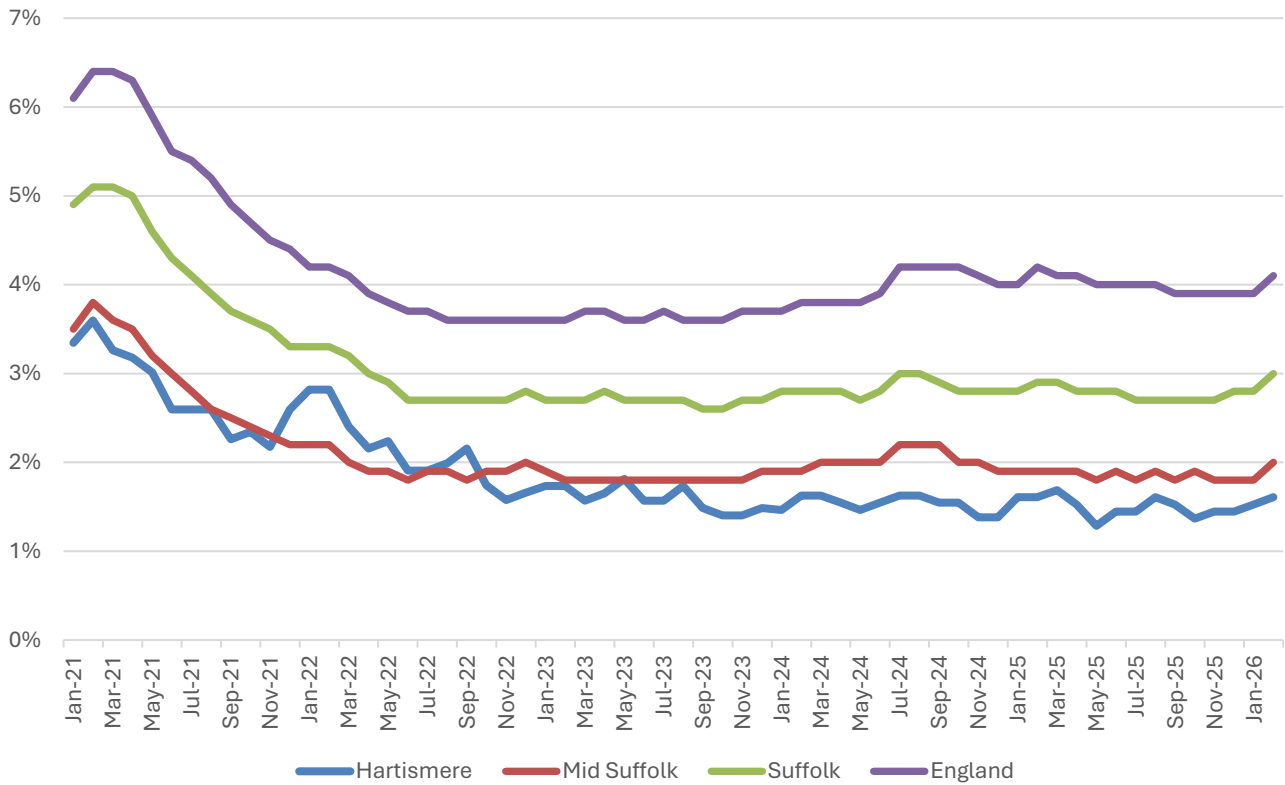
There are around 3,700 people employed in Hartismere.



- Manufacturing is of particular importance in Hartismere. The sector provides just over 1 in 5 jobs in the division, compared to only 7% of employment nationwide.
- Construction (14.2%), business administration and support services (11.5%), and wholesale, retail and motor trades (11%) are the other sectors that each account for more than a tenth of jobs in Hartismere.

Labour Market

Out-of-work benefit claimant rate



- In common with Mid Suffolk, Suffolk and England as a whole, Hartismere saw a steady decline in the proportion of the working age population claiming out-of-work benefits during 2021 and into 2022 following a peak during the COVID-19 pandemic.
- Since then, the claimant rate has been relatively stable at around 1.5%.
- In February 2026 (the latest available data), 1.6% of 16-64-year-olds were claiming out-of-work benefits in the division.
- The claimant rate in the division tends to be similar to or slightly below the Mid Suffolk level, and markedly below the county and national benchmarks.

Schools

School Information

Schools in the Division

Name	Phase	Academy Status	No. pupils	Average cohort size at:			
				Foundation Stage (age 4-7)	KS2 (age 7-11)	KS4 (age 14-16)	KS5 (age 16-18)
Gislingham CofE Primary School	Primary	AC	144	19	22		
Mellis CofE Primary School	Primary	AC	147	17	26		
Palgrave CofE Primary School	Primary	AC	85	13	13		
St Botolph's CEVCP School	Primary	LA	180	26	28		
Walsham-le-Willows CEVCP School	Primary	LA	117	17	19		
Wortham Primary School	Primary	AC	100	14	16		

Academy Status key: AS = Academy Sponsored, AC = Academy Converter, LA = LA Maintained, F = Free

Ofsted information

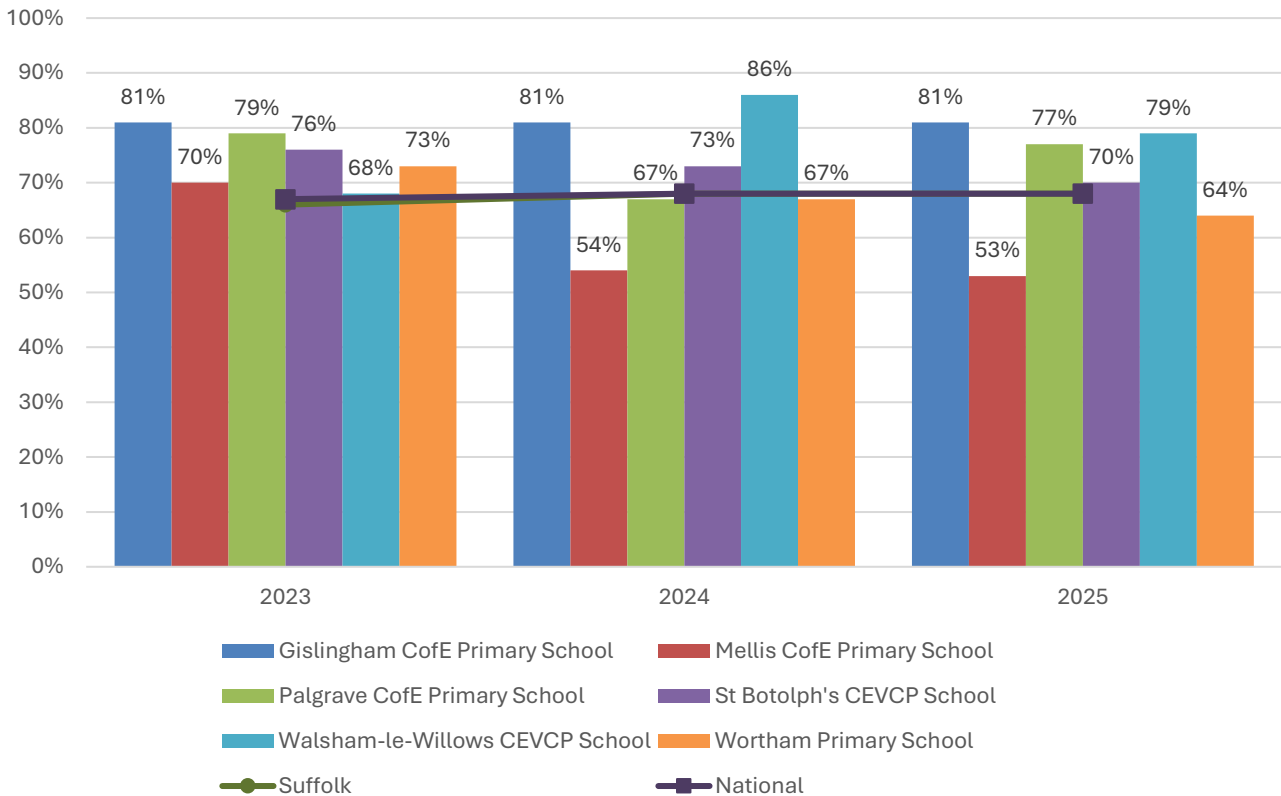
Name	Overall effectiveness	Effectiveness of leadership and management	Behaviour and attitudes	Personal development	Early years provision (if applicable)	Quality of education	Last inspection date
Gislingham CofE Primary School	2	2	1	2	2	2	16/04/2024
Mellis CofE Primary School	2	2	9	9	2	9	24/01/2019
Palgrave CofE Primary School	2	2	1	1	2	2	08/10/2019
St Botolph's CEVCP School	2	2	2	2	2	2	17/05/2023
Walsham-le-Willows CEVCP School	2	2	2	2	2	2	28/03/2023
Wortham Primary School	5	1	1	1	1	1	15/10/2024

Code	Judgement	Code	Judgement
0	Insufficient evidence	SM	Special measures
1	Outstanding	8	Does not apply
2	Good	9	No judgement
3	Requires improvement	Null	No data available
4	Inadequate	Not judged	Not judged
SWK	Serious weaknesses	5	No overall grade

School Attainment

Foundation Stage Profile (reception)

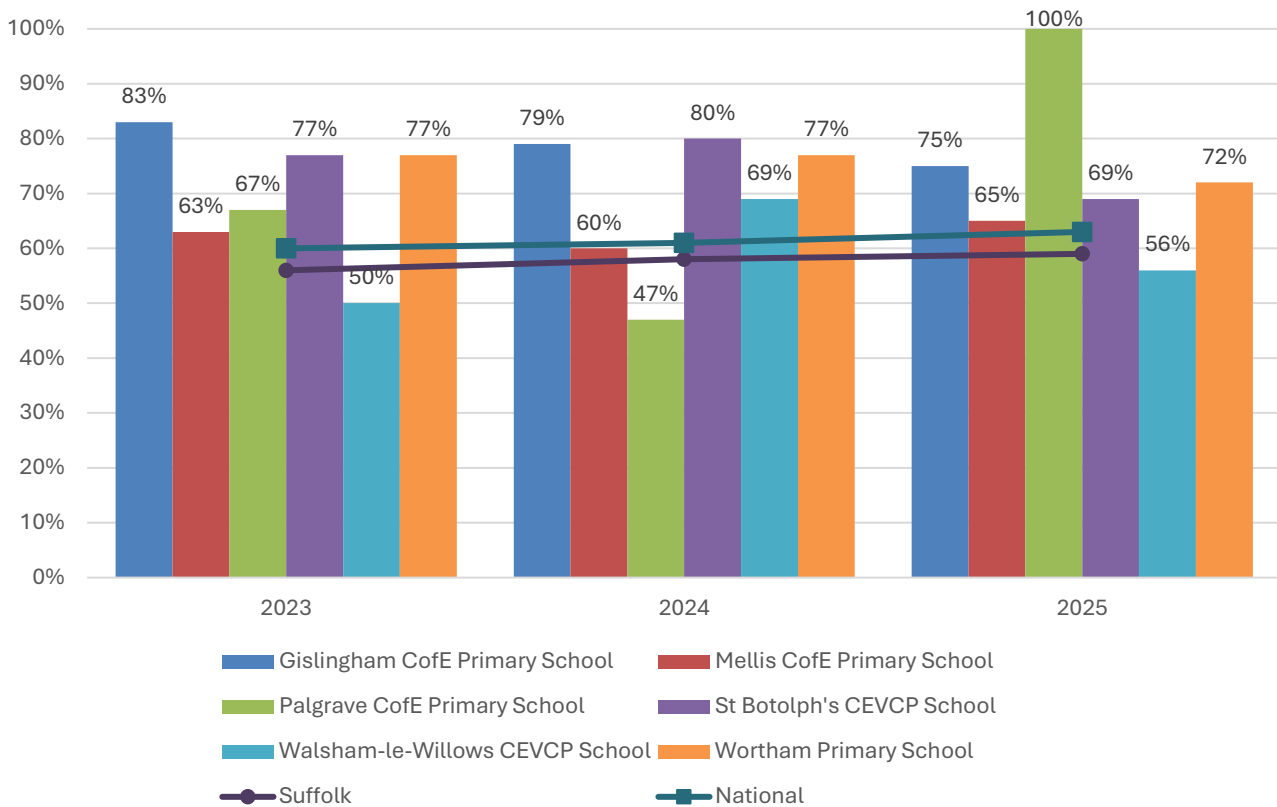
% pupils achieving Good Level of Development (GLD)



- The percentage of pupils to achieve a Good Level of Development (GLD) at Foundation Stage (FS) has been consistently above the Suffolk and national average over the last three years at three schools in Hartismere division; Gislingham Church of England Primary School, St Botolph’s CEVCP School, and Walsham-le-Willows CEVCP School.
- FS attainment was also above the national benchmark at Palgrave Church of England Primary school in the most recent year (2025).
- No school in the division has seen consistently below average Foundation Stage attainment during this period. Mellis Church of England Primary School and Wortham Primary School recorded FS attainment levels below the national figure in 2024 and 2025, but in the case of the latter, the gap was very narrow.

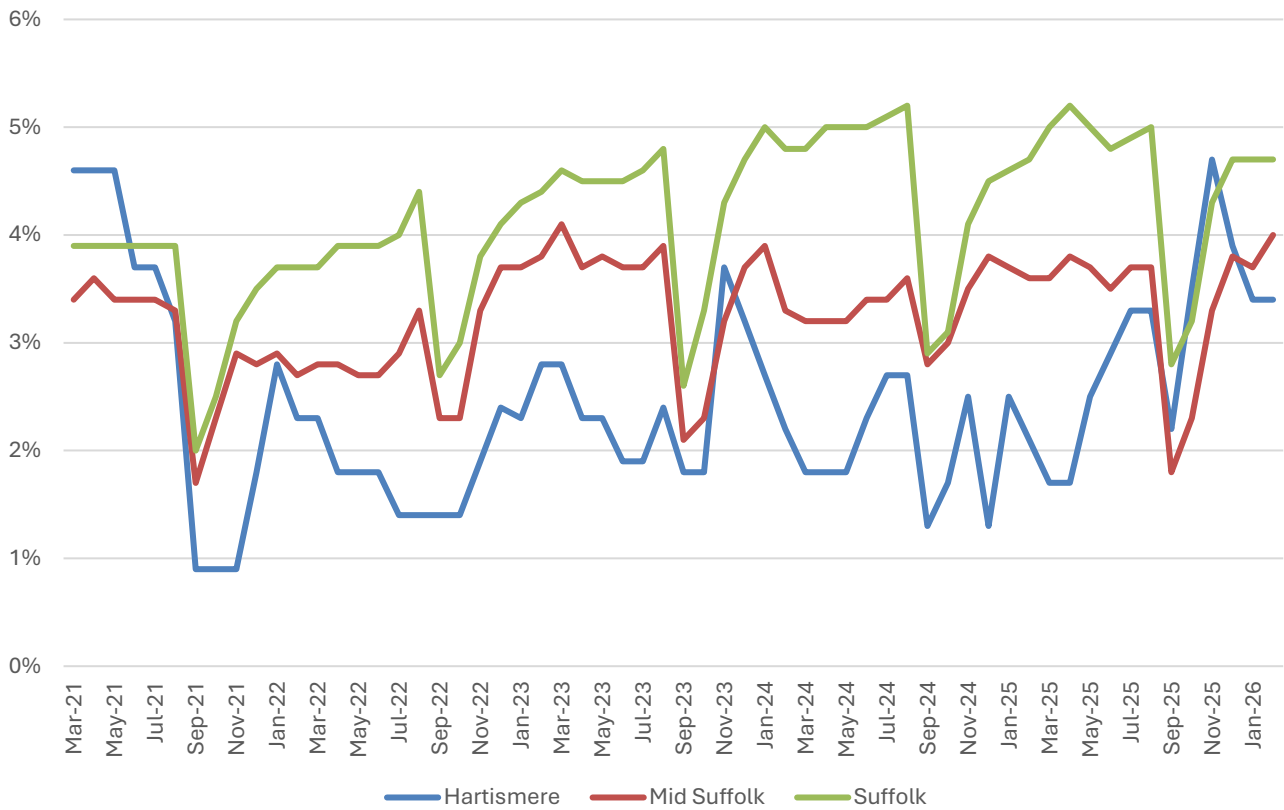
Key Stage 2 (age 11)

% pupils achieving the Expected Level or better in Reading, Writing and Mathematics



- Key Stage 2 attainment levels were above the national benchmark at five of the six schools in Hartismere in 2025.
- In the most recent year of data, Gislingham Church of England Primary School, Mellis Church of England Primary School, Palgrave Church of England Primary School, St Botolph's CEVCP School and Wortham Primary School all recorded a percentage of pupils to achieve the expected level or better in reading, writing and mathematics at KS2 that was above the national figure of 63%.
- Attainment at Gislingham Church of England Primary School and St Botolph's CEVCP School has been consistently above the national figure over the past three years.
- No school has seen consistently below average KS2 attainment.

NEET % (Not in Education, Employment or Training)



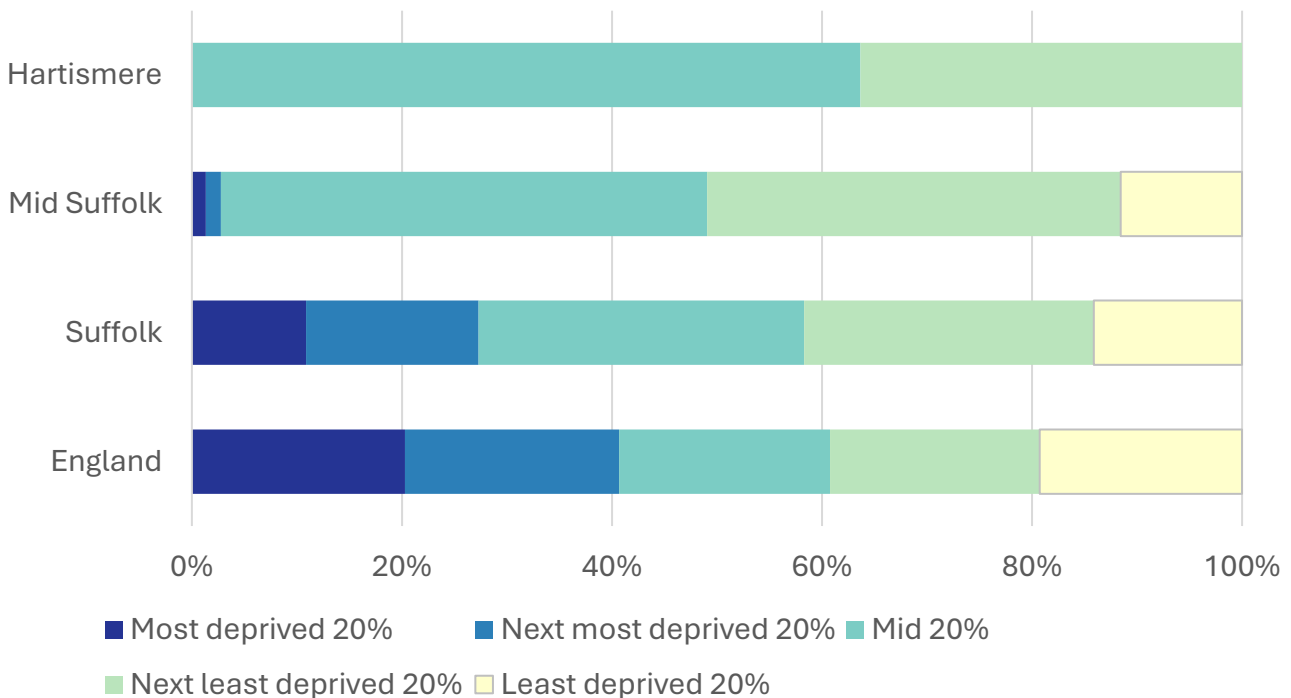
- In February 2026, 3.4% of 16-17-year-olds in Hartismere were classified as NEET (not in education, employment or training).
- NEET levels fluctuate considerably according to the time of year and due to small numbers of 16-17-year-olds in the division, typically being at their lowest at the beginning of a new school year.
- In Hartismere, the proportion of children who are NEET is generally below the district and county figures.

Index of Multiple Deprivation (IMD) 2025 (see map overleaf)

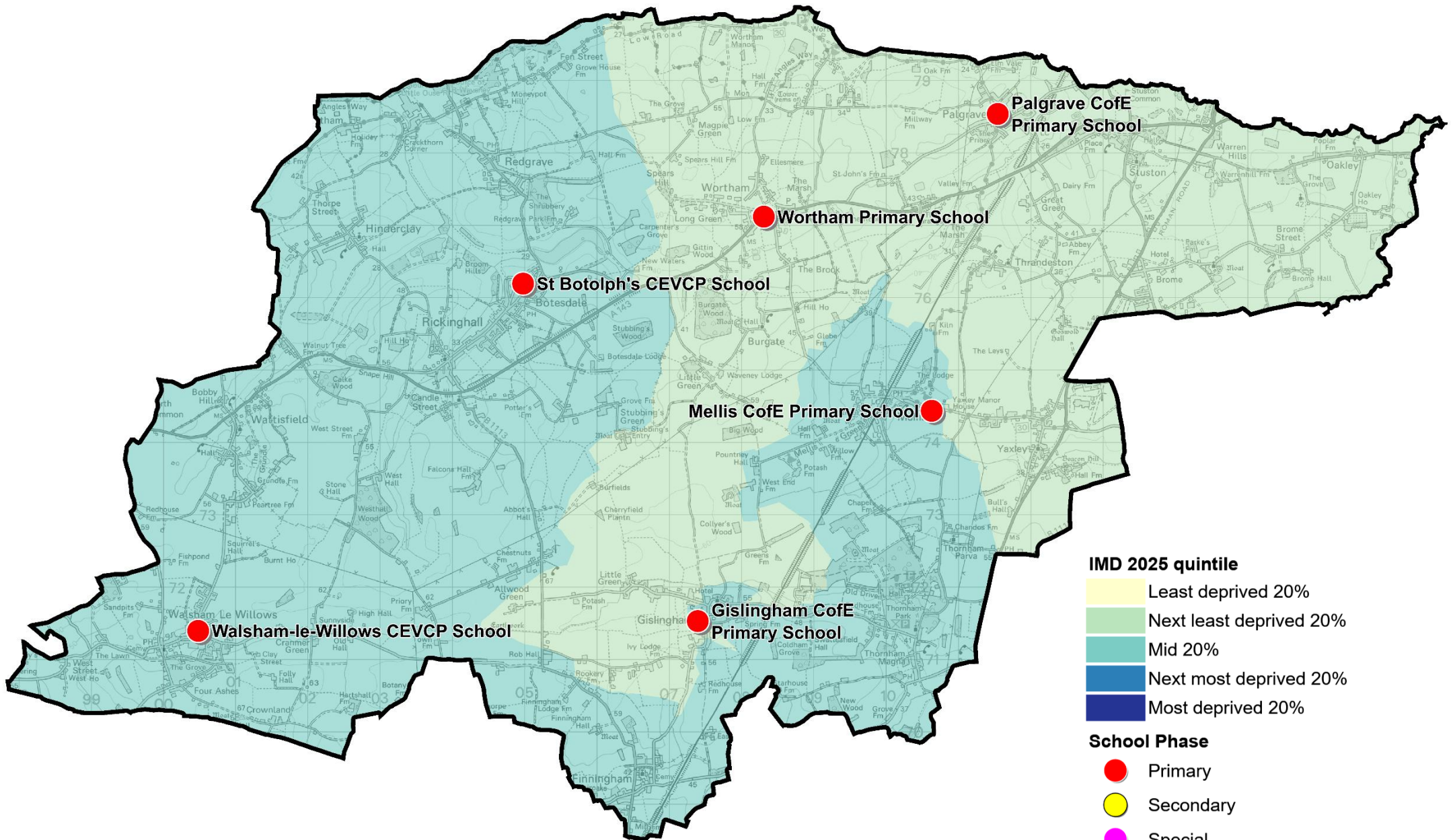
The IMD combines a number of indicators, chosen to cover a range of economic, social and housing issues, into a single deprivation score for each small area in England. This allows each area to be ranked relative to one another according to their level of deprivation. Small areas (Lower Super Output Areas, average population 1,700) are most commonly described as being in 1 of 5 quintile bands. The bottom quintile represents the 20% of areas that are the most deprived in England; these are shaded pale yellow on the map. The top quintile represents the least deprived areas in England and is shaded dark blue.

The Index is widely used to analyse patterns of deprivation, identify areas that would benefit from special initiatives or programmes and as a tool to determine eligibility for specific funding streams.

The chart below shows the percentage of the population of the division that live in areas ranked among each of the five quintiles of deprivation, alongside the district, county and England comparators.



- The 2025 IMD shows that deprivation levels in Hartismere are moderate to low, and fairly uniform across the division.
- Almost two-thirds of the population of Hartismere (64%) live in areas that are ranked in the middle quintile of deprivation in England.
- The remaining third of the division's population live in neighbourhoods among the second least deprived quintile (i.e. 20-40% least deprived).
- See the map overleaf for the distribution of IMD 2025 results across the division.



IMD 2025 quintile

- Least deprived 20%
- Next least deprived 20%
- Mid 20%
- Next most deprived 20%
- Most deprived 20%

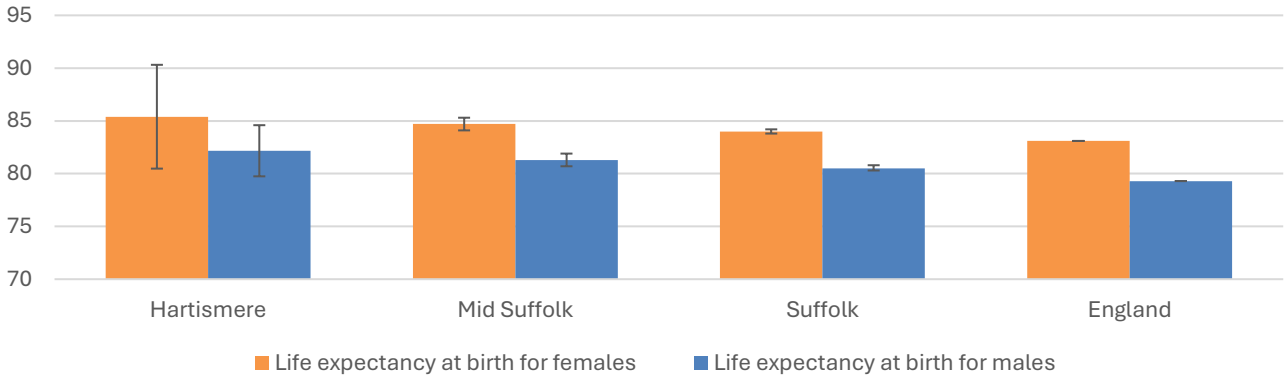
School Phase

- Primary
- Secondary
- Special
- Pupil referral unit/Alternative provision
- Nursery

Health

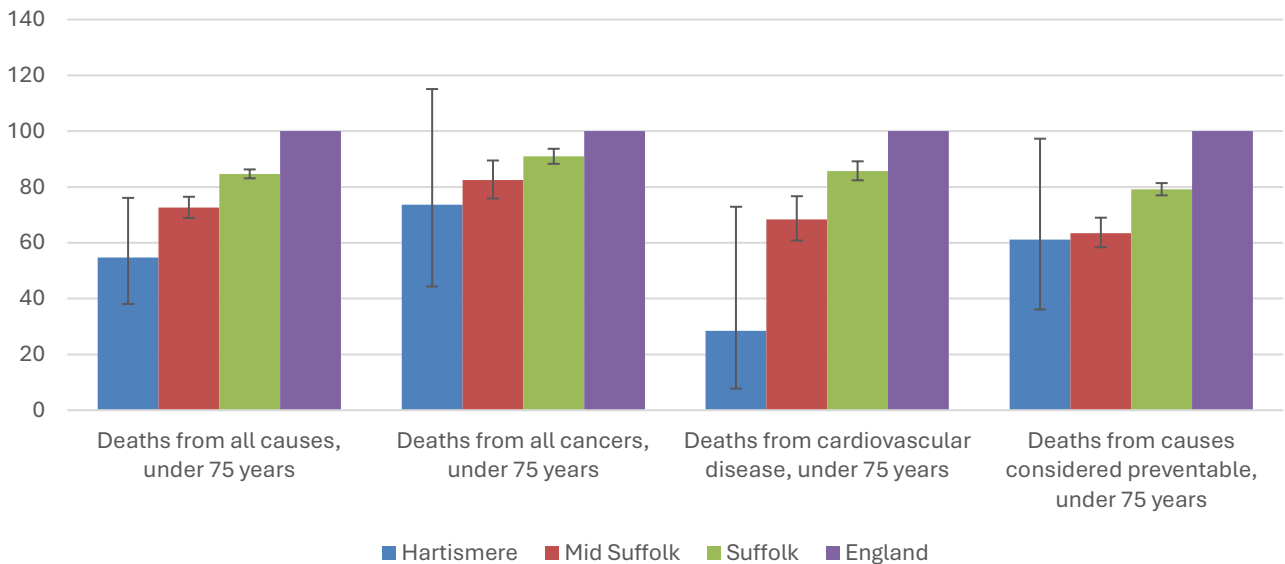
The local data used here is based on relatively small numbers. The confidence limits provide an indication of the reliability of the data. The 95% confidence intervals utilised on the chart provide a range within which there is 95% chance of the true result lying.

Life expectancy at birth



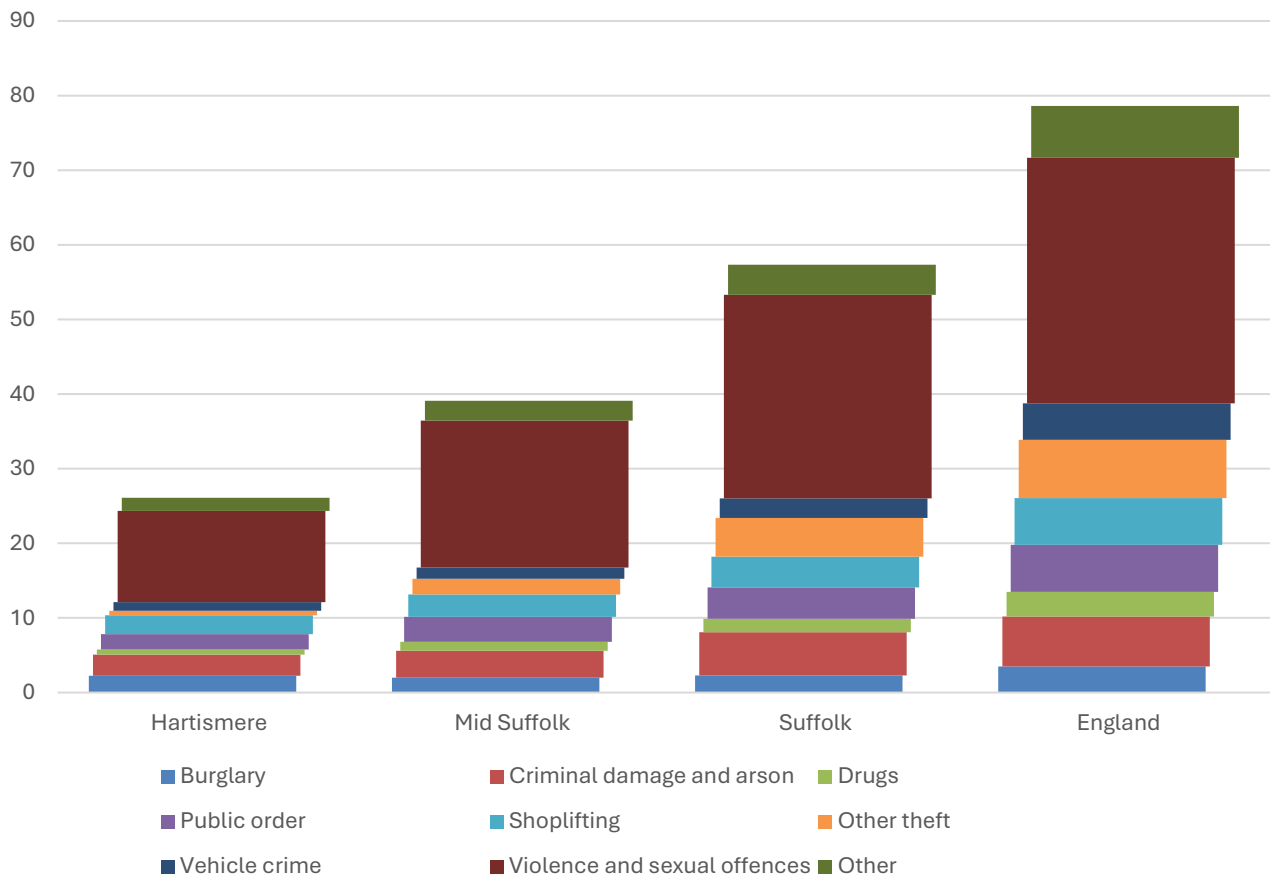
- The latest life expectancy at birth estimates for Hartismere are 85.4 for females (the England figure is 83.1), and 82.2 for males (compared to 79.3 nationally).
- Life expectancy at birth for females is statistically similar to the England figure, while for males it is statistically significantly higher.

Deaths, under 75 years, standardised mortality ratio



- Estimated standardised mortality ratios for early deaths from all causes, cancers, cardiovascular disease and causes considered preventable in Hartismere are below 100, indicating that deaths in under 75s due to these causes are lower than in England.
- Confidence intervals around these estimates are wide for local data, but the SMRs for deaths from all causes, cardiovascular disease, and from causes considered preventable are statistically significantly lower than England.
- The standardised mortality ratio data shown here means that for every 100 early deaths from all causes across England as a whole, there are an estimated 55 comparable deaths in Hartismere.

Crime & Community Safety



- Crime levels in Hartismere are relatively low compared to the county and Mid Suffolk rates.
- In the year to the end of January 2026, there were 26 recorded crimes per 1,000 residents in the division, compared to 39 in Mid Suffolk, and 57 countywide.
- All types of crime occur at a lower rate in the division than the district and county average.
- By far the most common type of crime recorded during this period was violence and sexual offences, which accounted for almost half of all recorded crimes in the division.

Additional Information

Parishes in Division

Botesdale
 Brome and Oakley
 Burgate
 Finningham
 Gislingham
 Hinderclay
 Mellis
 Palgrave
 Redgrave
 Rickingham Inferior

Rickingham Superior
 Stuston
 Thornham Magna
 Thornham Parva
 Thrandeston
 Walsham-le-Willows
 Wattisfield
 Wortham
 Yaxley

Data sources

Category	Indicator	Source
Demographic Profile	Quinary population table 2024	ONS 2024 mid-year population estimates
	Population pyramid 2024	ONS 2024 mid-year population estimates
	Ethnicity 2021	ONS 2021 Census
Economy	Employment by broad industrial sector 2024	ONS Business Register and Employment Survey via NOMIS
Labour market	Claimant count: The number of people claiming Jobseeker's Allowance plus those who claim Universal Credit who are out of work (% 16-64 population) January 2021-February 2026	DWP via NOMIS
Education	School information and attainment 2023-2025	Suffolk County Council CYP iHub
	% 16-17-year-olds NEET (Not in Employment, Education or Training) March 2021 to February 2026	Suffolk County Council CYP iHub via the Suffolk Observatory
Deprivation	Index of Multiple Deprivation 2025	Ministry of Housing, Communities and Local Government
Health	Life expectancy at birth 2016-2020 (2018-2020 for comparator areas)	Office for Health Improvement and Disparities
Health	Standardised mortality ratio for deaths from all causes, cancer, cardiovascular disease, and from causes considered preventable (under 75 years), 2016-2020 (2019-2023 for comparator areas). The standardised mortality ratio is the ratio of observed deaths in the study group to expected deaths in the general population	Office for Health Improvement and Disparities
Community Safety	Recorded crime rate per 1,000 resident population February 2025 to January 2026	Data.police.uk via the Suffolk Observatory

For more data and information about Hartismere Electoral Division, see the Suffolk Observatory www.suffolkobservatory.info

