

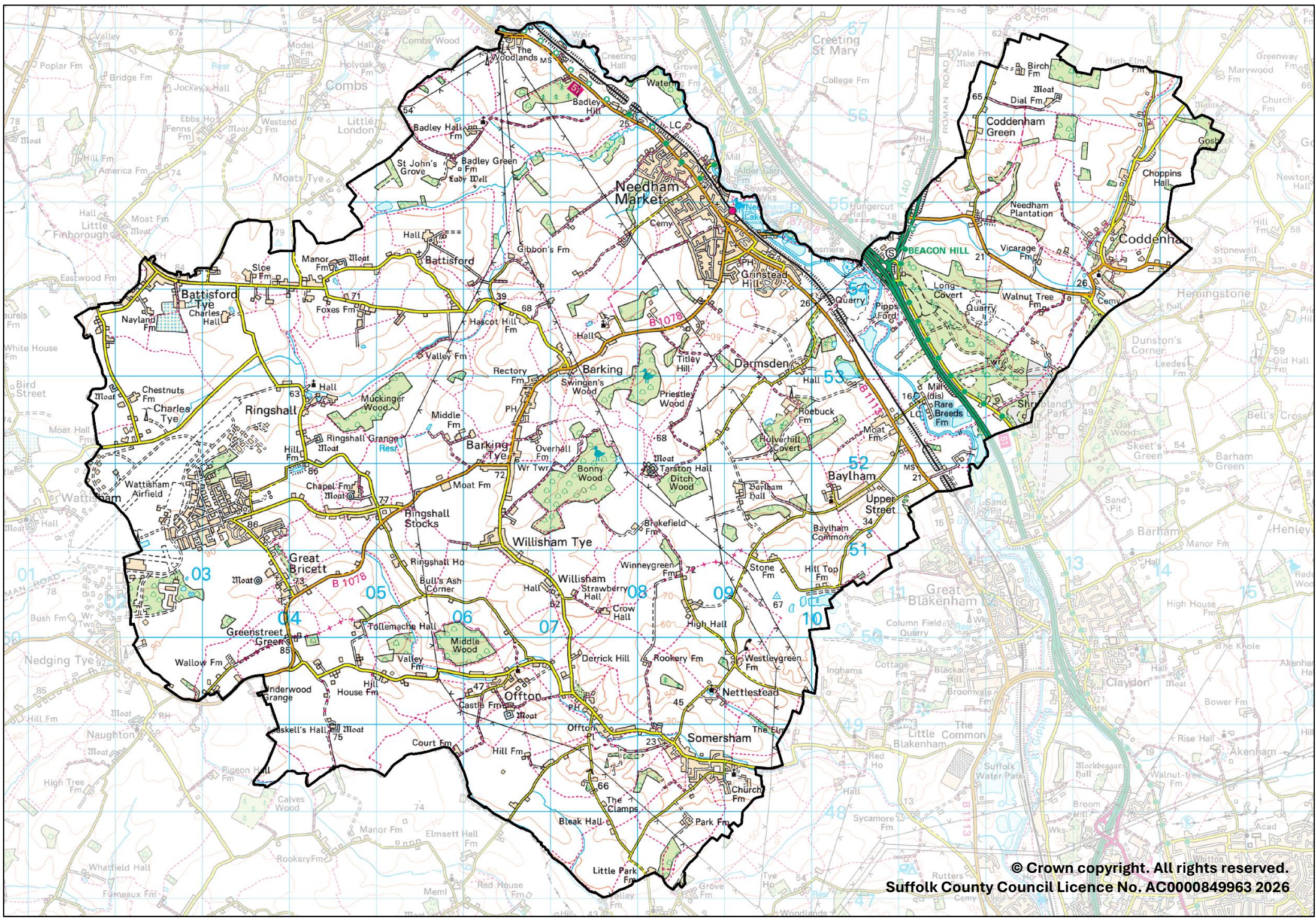
# Bosmere

County Electoral Division profile

May 2026

This division comprises Battsford & Ringshall Ward in its entirety, and parts of Blakenham, Claydon & Barham, and Needham Market Wards





## **Contents**

- Demographic Profile: Age & Ethnicity
- Economy and Labour Market
- Schools & NEET
- Index of Multiple Deprivation
- Health
- Crime & Community Safety
- Additional Information
- Data Sources

# Electoral Division Profiles: an introduction

These profiles have been produced to support elected members, constituents and other interested parties in understanding the demographic, economic, social and educational profile of their neighbourhoods. We have used the latest data available at the time of publication.

Much more data is available from national and local sources than is captured here, but it is hoped that the profile will be a useful starting point for discussion, where local knowledge and experience can be used to flesh out and illuminate the information presented here.

The profile can be used to help look at some fundamental questions e.g.

- Does the age profile of the population match or differ from the national profile?
- Is there evidence of the ageing profile of the county in all the wards in the Division or just some?
- How diverse is the community in terms of ethnicity?
- What is the impact of deprivation on families and residents?
- Does there seem to be a link between deprivation and school performance?
- What is the breakdown of employment sectors in the area?
- Is it a relatively healthy area compared to the rest of the district or county?
- What sort of crime is prevalent in the community?

A vast amount of additional data is available on the **Suffolk Observatory**

[www.suffolkobservatory.info](http://www.suffolkobservatory.info)

The Suffolk Observatory is a free online resource that contains all Suffolk's vital statistics; it is the one-stop-shop for information and intelligence about Suffolk. Through data, reports and maps, the Suffolk Observatory provides a comprehensive picture of the County. It is a great source for useful facts and figures that can be used for writing reports and presentations, informing strategic and business planning, preparing funding applications or supporting academic research. Data is presented around the key themes of population, children and young people, health and social care, housing, crime and community safety, deprivation, economy and employment and environment. All areas of the county are covered, right down to district, electoral division, ward and parish level, with information easily accessible in a variety of formats. You can also build your own reports for custom areas.

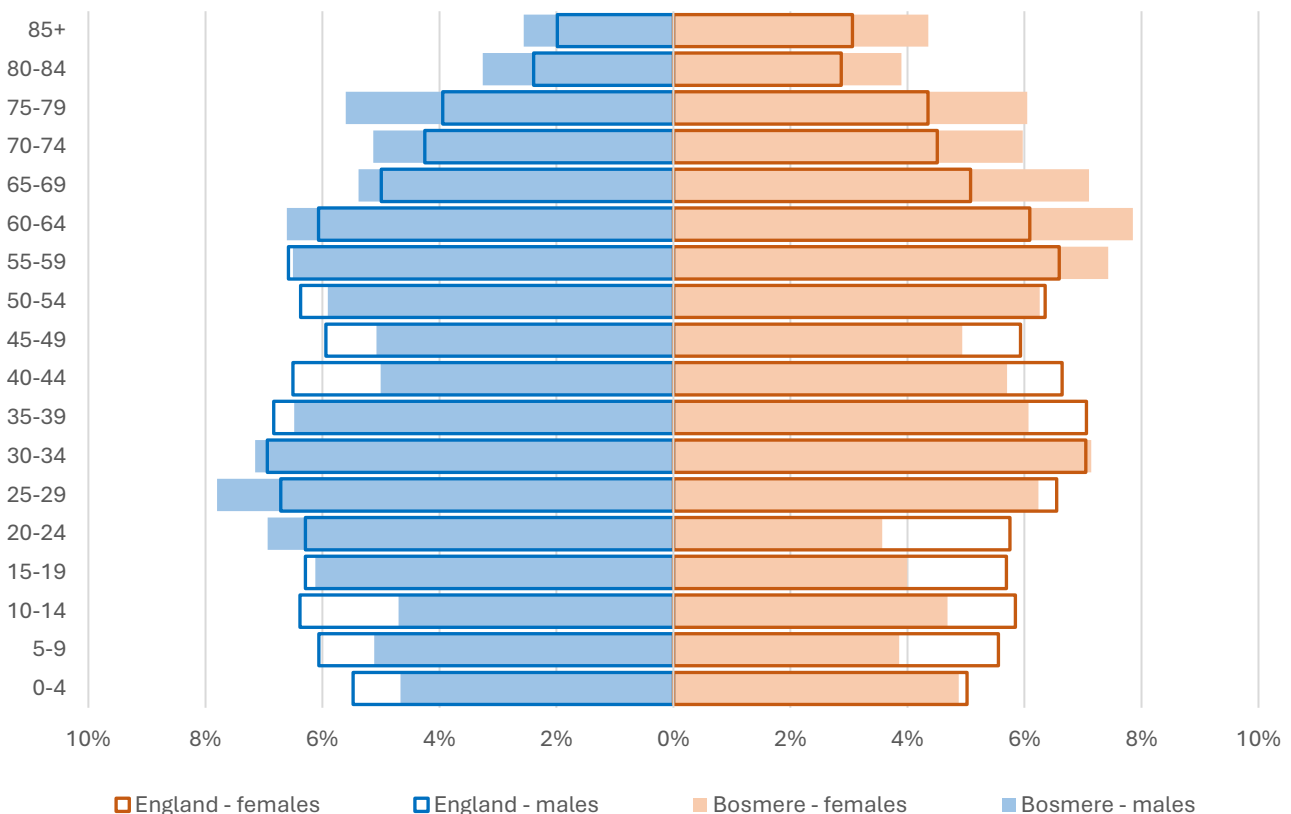
## Technical Notes:

1. Where electoral divisions do not exactly match the boundaries at which the data is available (e.g. ward, Output Area or Lower Super Output Area), we have adopted a "best-fit" approach to produce a dataset.
2. District, county and national level data is provided where possible to provide a context for comparisons.

# Demographic Profile - Age

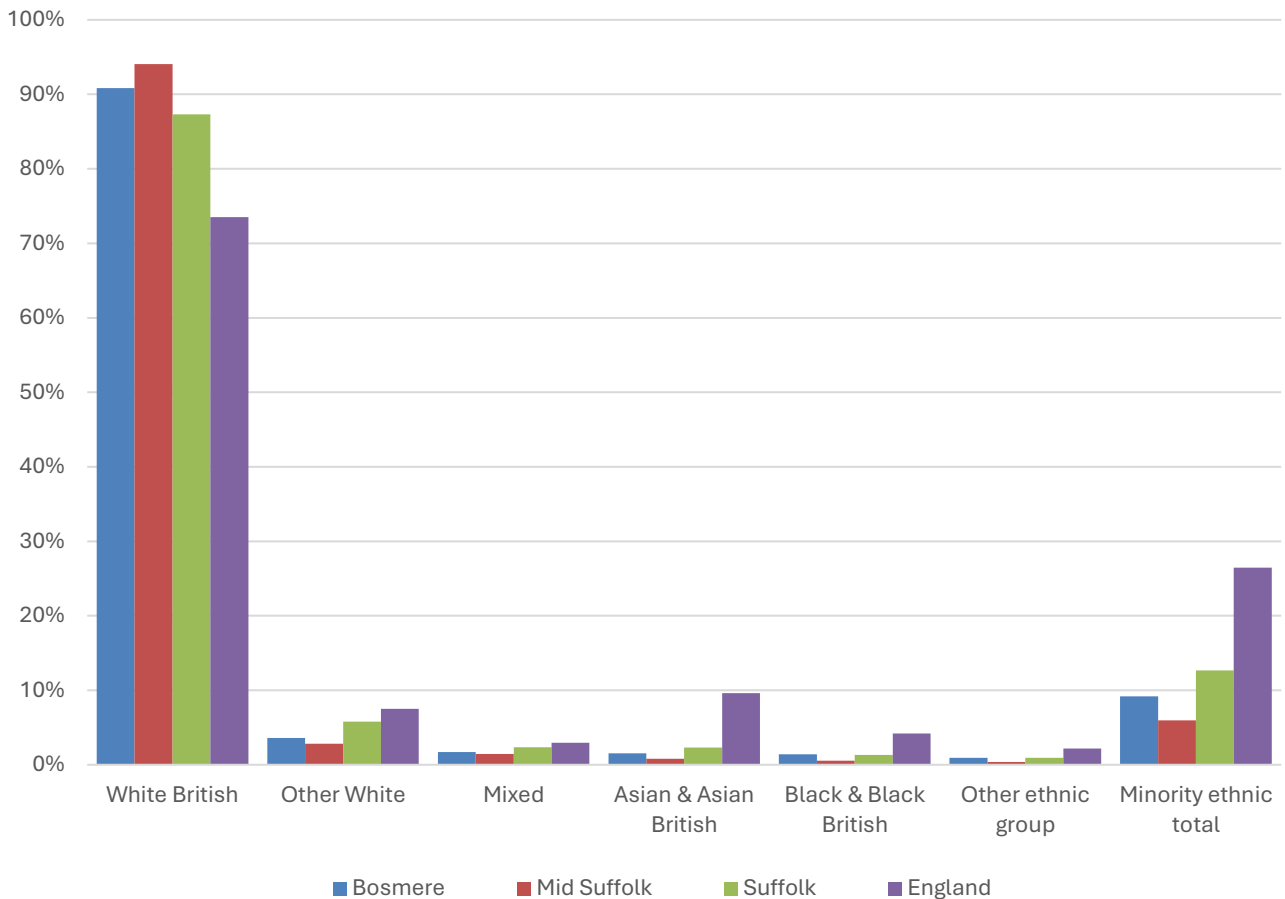
In mid-2024, the estimated population of Bosmere stood at 10,761, an increase of 5.4% over the past decade. The age structure of the component wards and the division as a whole is set out below.

	Bosmere Division	Needham Market Ward	Battisford & Ringshall Ward	Blakenham Ward	Claydon & Barham Ward
<b>All Ages</b>	<b>10,761</b>	5,276	4,062	773	650
<b>0-4</b>	<b>513</b>	261	186	48	18
<b>5-9</b>	<b>485</b>	235	178	42	30
<b>10-14</b>	<b>505</b>	239	188	37	41
<b>15-19</b>	<b>548</b>	176	310	31	31
<b>20-24</b>	<b>571</b>	194	324	25	28
<b>25-29</b>	<b>758</b>	286	399	45	28
<b>30-34</b>	<b>769</b>	402	302	48	17
<b>35-39</b>	<b>676</b>	343	256	42	35
<b>40-44</b>	<b>575</b>	301	187	38	49
<b>45-49</b>	<b>539</b>	250	198	44	47
<b>50-54</b>	<b>654</b>	341	206	48	59
<b>55-59</b>	<b>748</b>	394	253	48	53
<b>60-64</b>	<b>776</b>	395	258	71	52
<b>65-69</b>	<b>669</b>	374	219	35	41
<b>70-74</b>	<b>596</b>	315	182	50	49
<b>75-79</b>	<b>626</b>	321	209	69	27
<b>80-84</b>	<b>384</b>	207	125	32	20
<b>85+</b>	<b>369</b>	242	82	20	25



- The age pyramid for Bosmere division shows a higher proportion of people aged 55 and over than in England as a whole.
- There is also a large proportion of 25-34-year-olds due to the presence of Wattisham airbase in the division.
- The most common age group in the division is 60-64-year-olds (7.21% of the local population), followed by 30-34-year-olds (7.15%), and 25-29-year-olds (7%).
- Slightly under a fifth of the population of Bosmere is of retirement age.

# Demographic Profile - Ethnicity

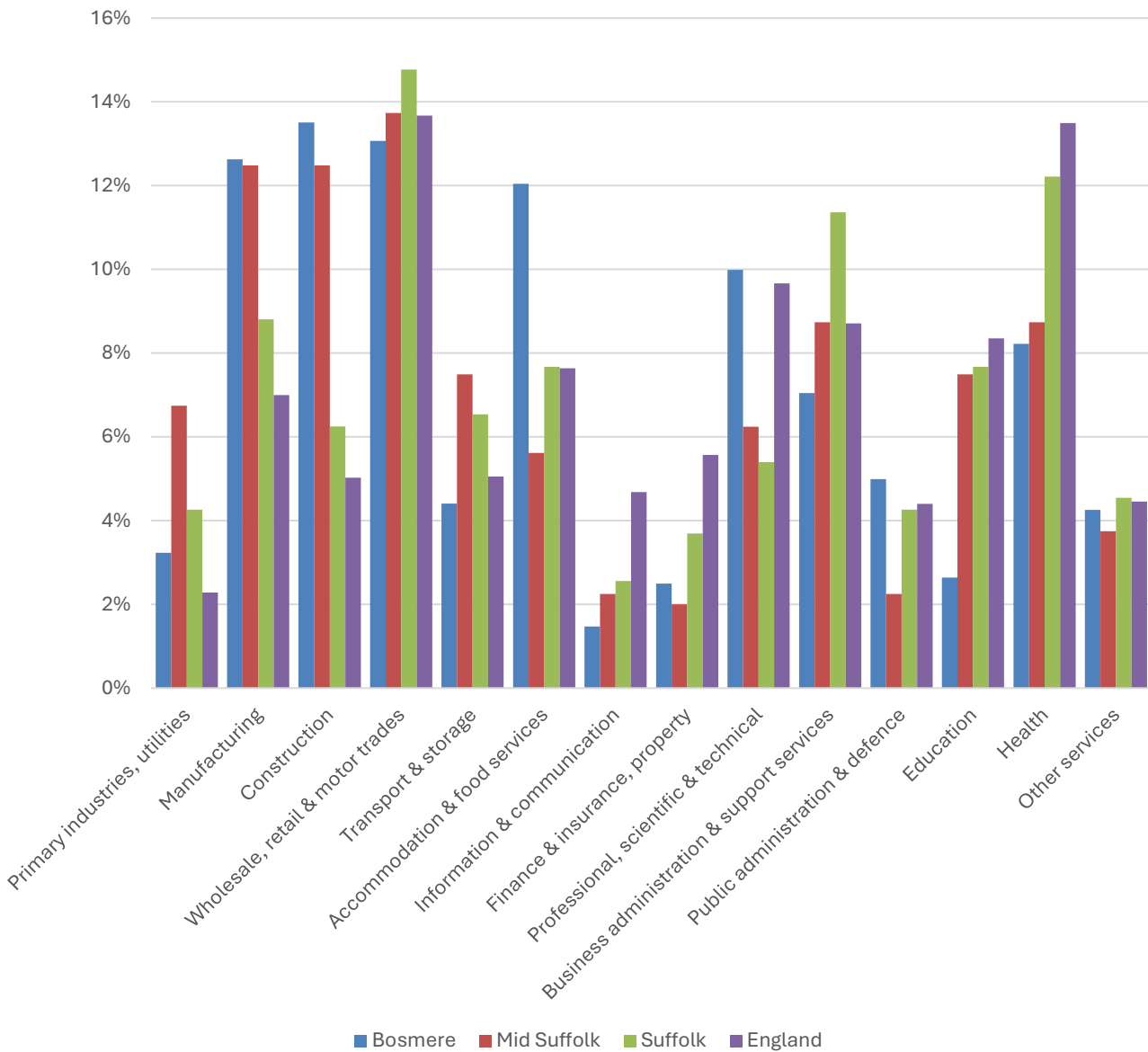


- According to the latest data (2021 Census), 90.8% of the population of Bosmere is White British.
- There were 918 (9.2%) residents from minority ethnic groups in the division, around seven tenths of the proportion in Suffolk overall, and less than a third of the England average.
- Bosmere has a more ethnically diverse population than Mid Suffolk overall. Each minority ethnic group makes up a larger proportion of the population in Bosmere than they do in the district overall.

	All people	White British		Other White		Mixed		Asian and Asian British		Black and Black British		Other Ethnic Group		Total minority ethnic population	
	Count	Count	%	Count	%	Count	%	Count	%	Count	%	Count	%	Count	%
Bosmere	9,999	9,081	90.8	360	3.6	172	1.7	152	1.5	140	1.4	94	0.9	918	9.2
Mid Suffolk	102,701	96,581	94.0	2,882	2.8	1,463	1.4	821	0.8	553	0.5	401	0.4	6,120	6.0
Suffolk	760,687	664,205	87.3	44,066	5.8	17,807	2.3	17,483	2.3	10,168	1.3	6,958	0.9	96,482	12.7
England			73.5		7.5		3.0		9.6		4.2		2.2		26.5

# Economy

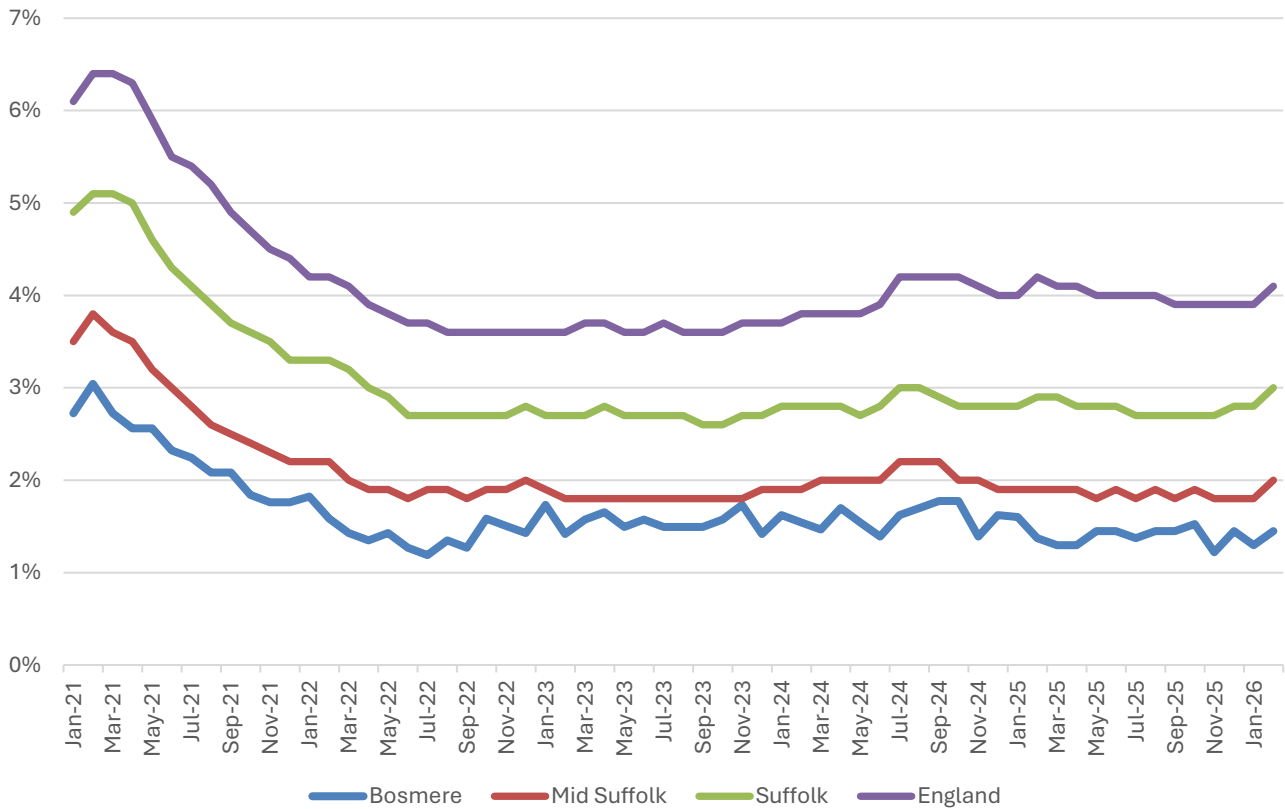
There are around 3,400 people employed in Bosmere.



- There is a good mix of employment in Bosmere, with no single sector accounting for more than 14% of local jobs on its own.
- Construction (13.5% of employment in Bosmere), wholesale, retail and motor trades (13%), manufacturing (12.6%), accommodation and food services (12%) and professional, scientific and technical activities all account for more than a tenth of jobs in the division.

# Labour Market

## Out-of-work benefit claimant rate



- In common with Mid Suffolk, Suffolk and England as a whole, Bosmere saw a steady decline in the proportion of the working age population claiming out-of-work benefits during 2021 and into 2022 following a peak during the COVID-19 pandemic.
- Since then, the claimant rate has been fairly stable at around 1.5%.
- In February 2026 (the latest available data), 1.4% of 16-64-year-olds were claiming out-of-work benefits in the division.
- The claimant rate in the division is consistently similar to the district and county figures and below the national benchmark.

# Schools

## School Information

### Schools in the Division

Name	Phase	Academy Status	No. pupils	Average cohort size at:			
				Foundation Stage (age 4-7)	KS2 (age 7-11)	KS4 (age 14-16)	KS5 (age 16-18)
Bosmere Community Primary School	Primary	AC	246	34	35		
Ringshall School	Primary	AC	117	18	16		
Somersham Primary School	Primary	LA	72	10	15		

Academy Status key: AS = Academy Sponsored, AC = Academy Converter, LA = LA Maintained, F = Free

### Ofsted information

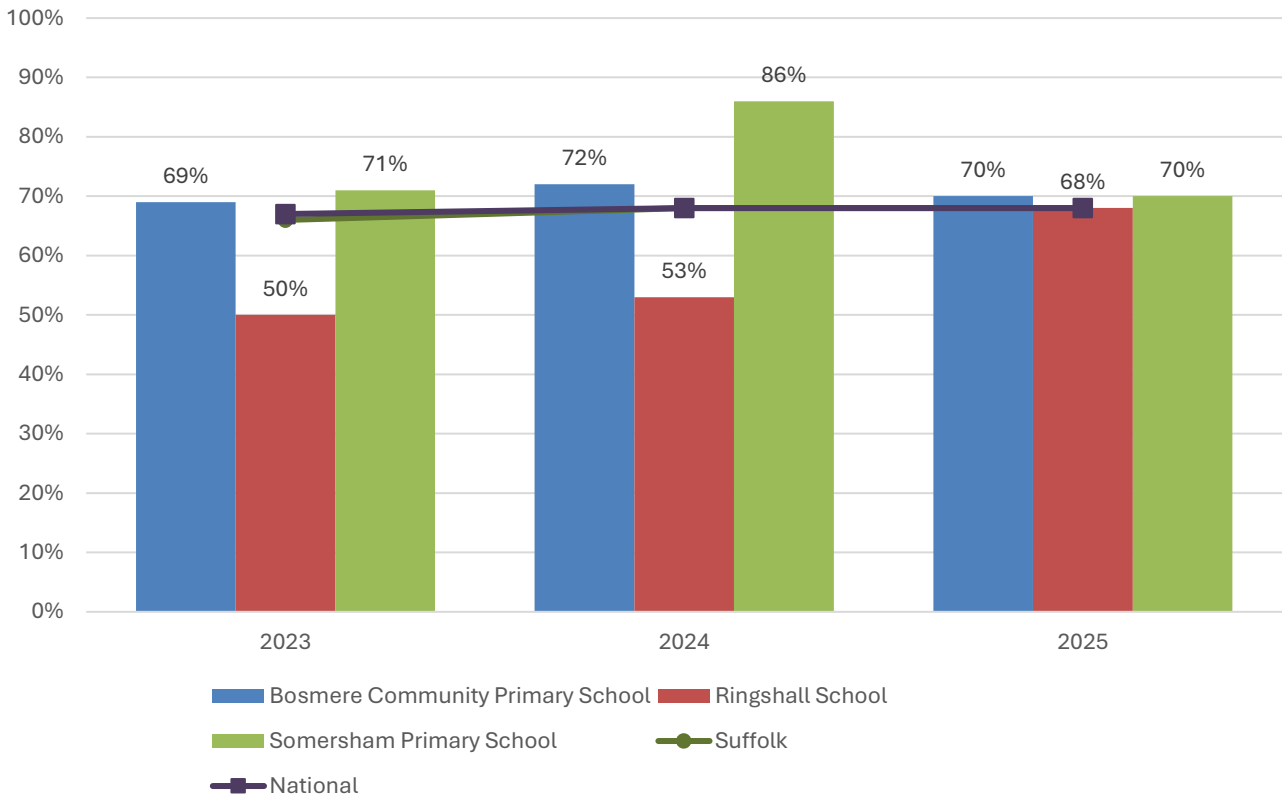
Name	Overall effectiveness	Effectiveness of leadership and	Behaviour and attitudes	Personal development	Early years provision (if applicable)	Quality of education	Last inspection date
Bosmere Community Primary School	2	2	2	2	2	2	23/01/2020
Ringshall School	2	2	9	9	2	9	05/06/2019
Somersham Primary School	2	2	2	2	2	2	15/01/2020

Code	Judgement	Code	Judgement
0	Insufficient evidence	SM	Special measures
1	Outstanding	8	Does not apply
2	Good	9	No judgement
3	Requires improvement	Null	No data available
4	Inadequate	Not judged	Not judged
SWK	Serious weaknesses	5	No overall grade

# School Attainment

## Foundation Stage Profile (reception)

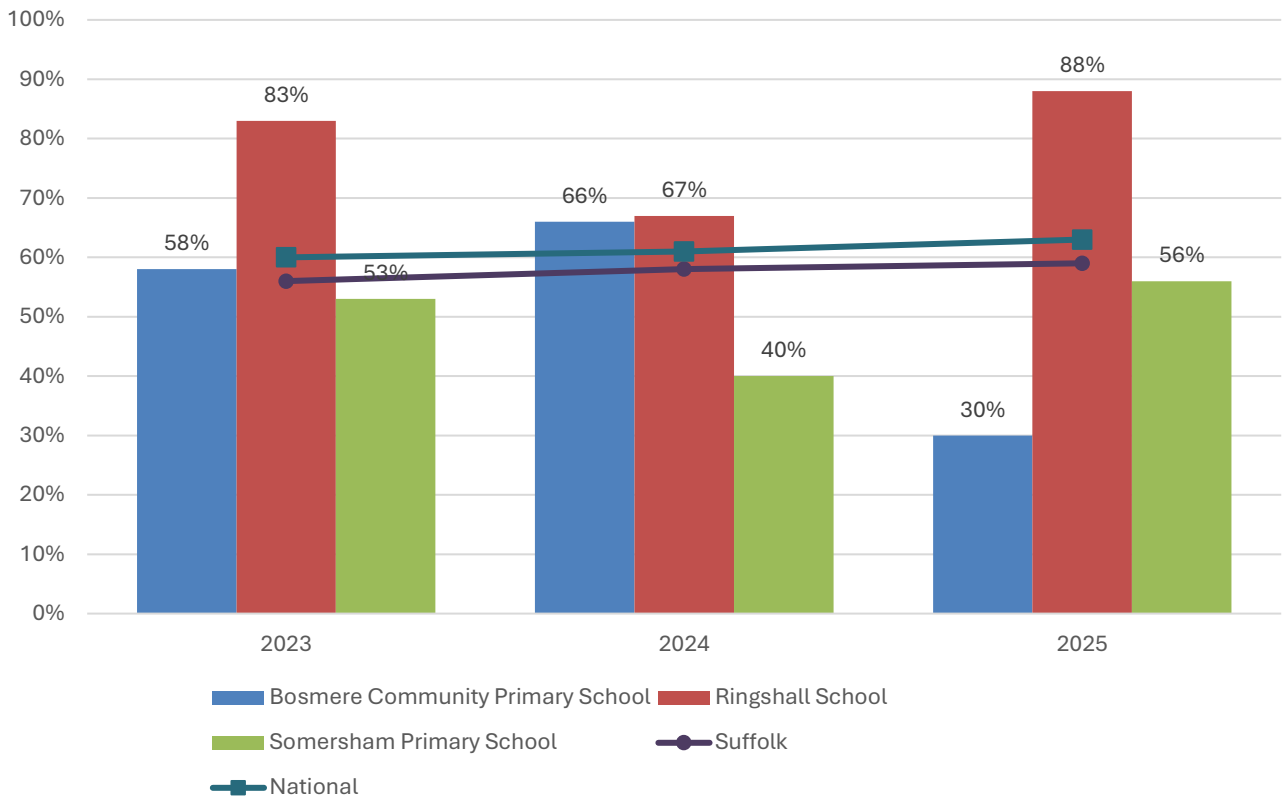
% pupils achieving Good Level of Development (GLD)



- In 2025, the percentage of pupils to achieve a Good Level of Development at Foundation Stage was 70% at Bosmere Community School, 68% at Ringshall School, 70% at Somersham Primary School, and 68% nationally.
- Foundation Stage attainment at both Bosmere Community Primary School and Somersham Primary School has been consistently above the national figure throughout the last three years.
- Attainment has improved at Ringshall School during this period, and was on a par with the national average in 2025.

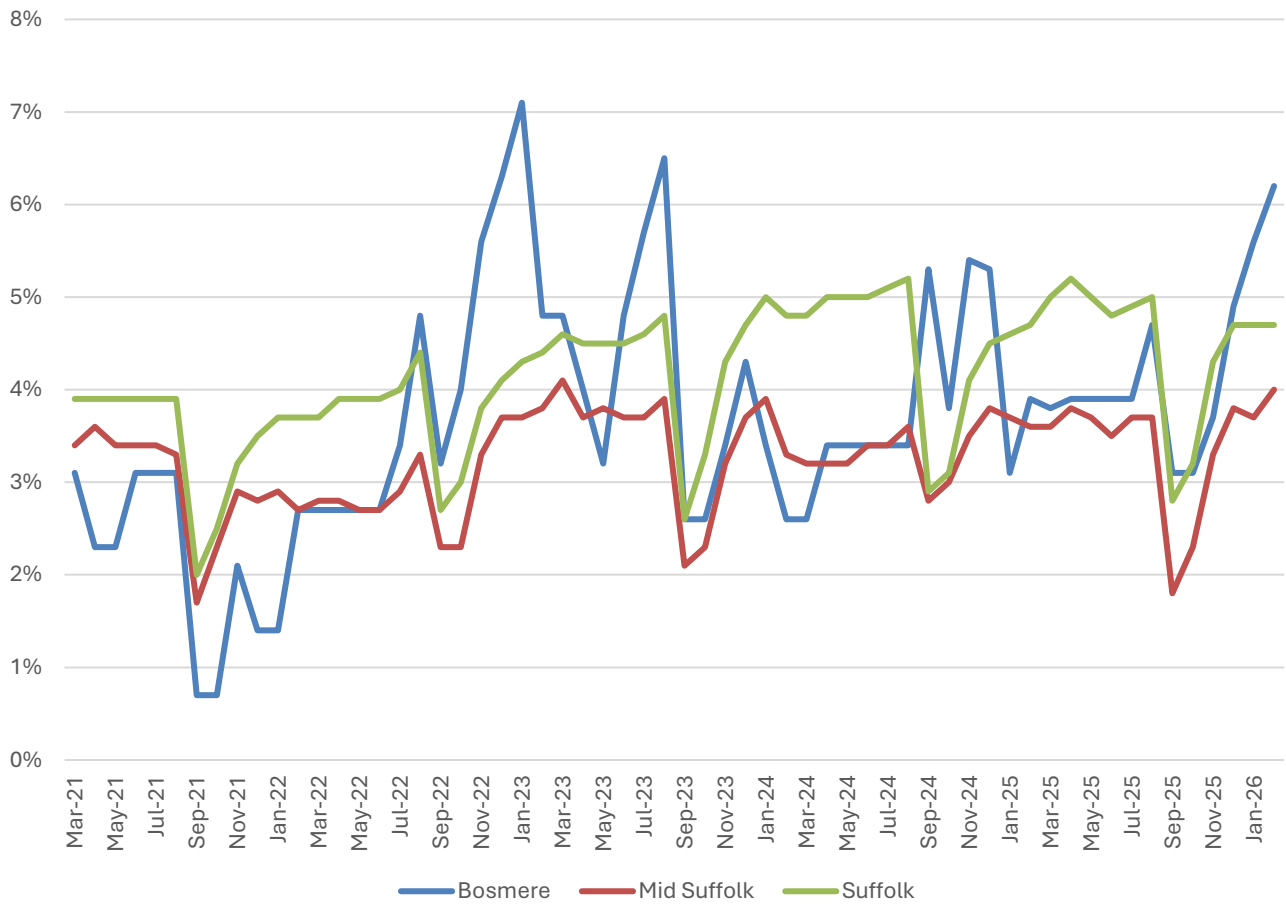
## Key Stage 2 (age 11)

% pupils achieving the Expected Level or better in Reading, Writing and Mathematics



- The percentage of pupils who achieved the expected level or better in reading, writing and mathematics at Key Stage 2 at Ringshall School has been consistently above the national benchmark over the last three years, while the opposite is true of Somersham Primary School.
- KS2 attainment at Bosmere Community Primary School was two percentage points below the national figure in 2023 and five percentage points above it in 2024, before dropping significantly in 2025.
- It should be noted that cohort sizes at some of these schools are small and they are therefore more subject to significant fluctuations from one year to the next.

## NEET % (Not in Education, Employment or Training)



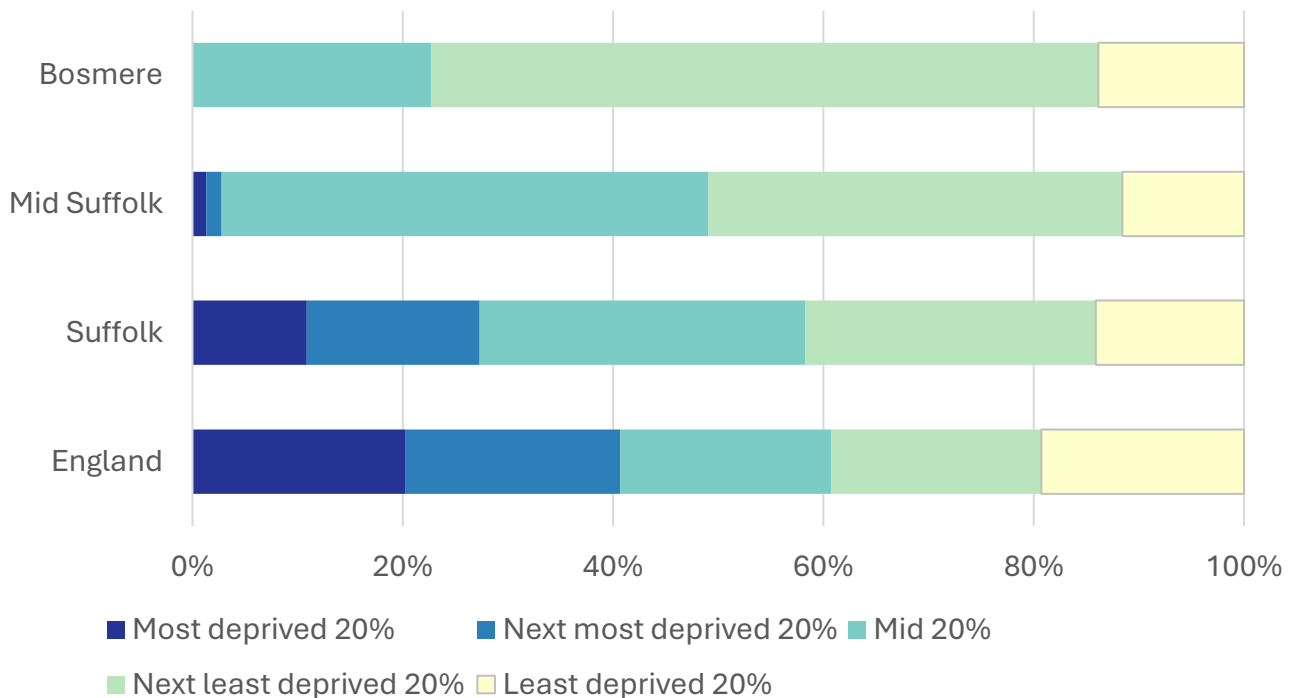
- In February 2026, 6.2% of 16-17-year-olds in Bosmere were classified as NEET (not in education, employment or training).
- NEET levels fluctuate considerably according to the time of year and due to small numbers of 16-17-year-olds in the division, typically being at their lowest at the beginning of a new school year.
- In Bosmere, the proportion of children who are NEET is generally close to the district and county figures.

## Index of Multiple Deprivation (IMD) 2025 (see map overleaf)

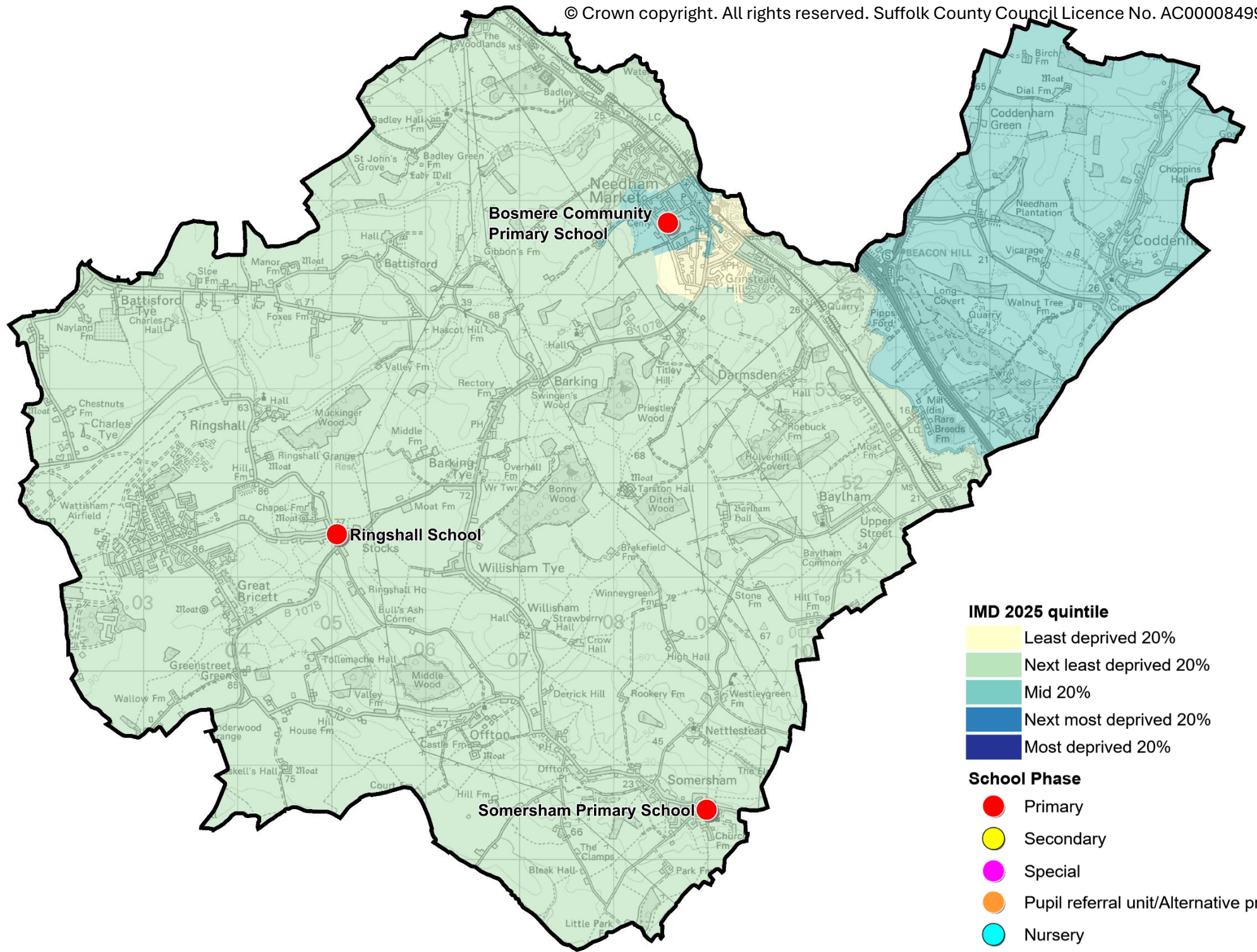
The IMD combines a number of indicators, chosen to cover a range of economic, social and housing issues, into a single deprivation score for each small area in England. This allows each area to be ranked relative to one another according to their level of deprivation. Small areas (Lower Super Output Areas, average population 1,700) are most commonly described as being in 1 of 5 quintile bands. The bottom quintile represents the 20% of areas that are the most deprived in England; these are shaded pale yellow on the map. The top quintile represents the least deprived areas in England and is shaded dark blue.

The Index is widely used to analyse patterns of deprivation, identify areas that would benefit from special initiatives or programmes and as a tool to determine eligibility for specific funding streams.

The chart below shows the percentage of the population of the division that live in areas ranked among each of the five quintiles of deprivation, alongside the district, county and England comparators.



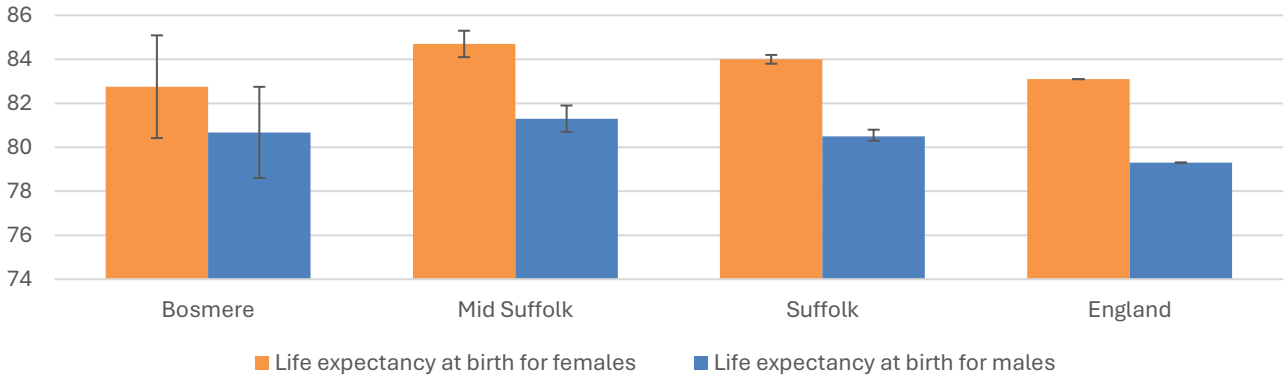
- The 2025 IMD shows that deprivation levels in Bosmere are, in the main, relatively low.
- Around three quarters of the population of the division live in areas that are ranked among the least deprived 40% of places in England, with 63% in the second least deprived quintile, and 14% in the least deprived.
- The remaining part of Bosmere, home to just under a quarter of the local population, is ranked in the middle quintile.
- See the map overleaf for the distribution of IMD 2025 results across the division.



# Health

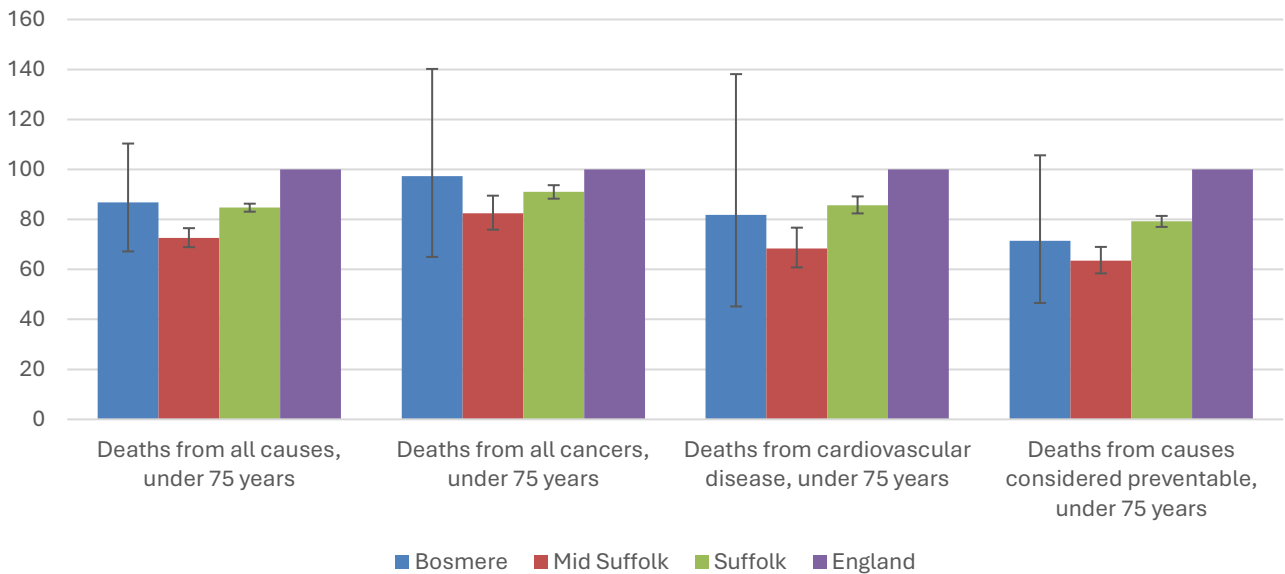
The local data used here is based on relatively small numbers. The confidence limits provide an indication of the reliability of the data. The 95% confidence intervals utilised on the chart provide a range within which there is 95% chance of the true result lying.

## Life expectancy at birth



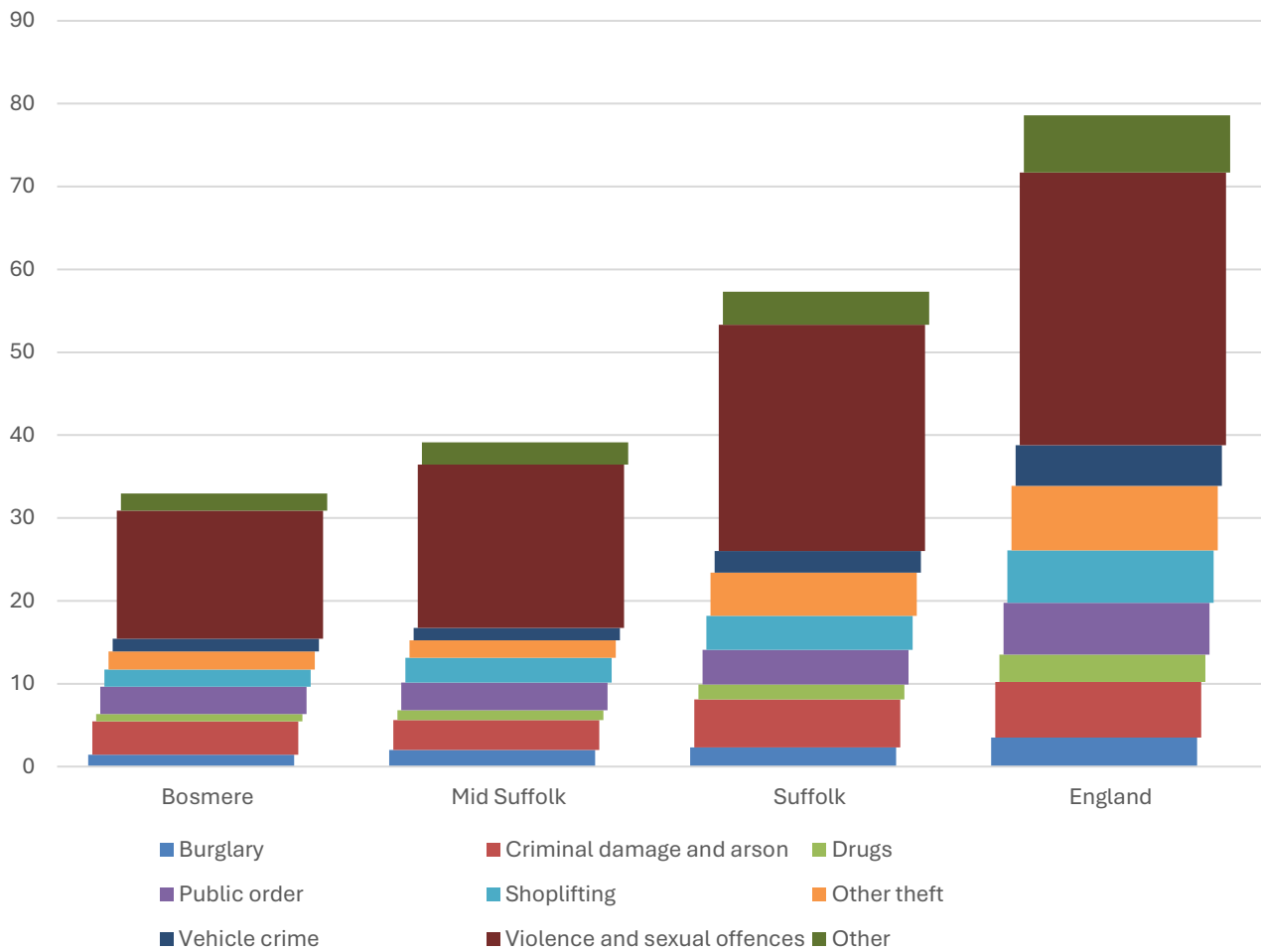
- The latest life expectancy at birth estimates for Bosmere are 82.8 for females (the England figure is 83.1), and 80.7 for males (compared to 79.3 nationally).
- Life expectancy for both males and females in the division are statistically similar to the England figures.

## Deaths, under 75 years, standardised mortality ratio



- Estimated standardised mortality ratios for early deaths from all causes, cancers, cardiovascular disease and causes considered preventable in Bosmere are below 100, indicating that deaths in under 75s due to these causes are lower than in England.
- Confidence intervals around these estimates are wide for local data, however, and early deaths from all of the causes shown here are statistically similar in the division to Mid Suffolk, Suffolk, and England.
- The standardised mortality ratio data shown here means that for every 100 early deaths from all causes across England as a whole, there are an estimated 87 comparable deaths in Bosmere.

# Crime & Community Safety



- Crime levels in Bosmere are relatively low.
- In the year to the end of January 2026, there were 33 recorded crimes per 1,000 residents in the division, compared to 39 in Mid Suffolk, and 57 countywide.
- All types of crime occur at a lower rate in the division than the district and county average.
- By far the most common type of crime recorded during this period was violence and sexual offences, which accounted for almost half of all recorded crimes in the division.

## Additional Information

### Parishes in Division

- |            |                |
|------------|----------------|
| Badley     | Needham Market |
| Barking    | Nettlestead    |
| Battisford | Offton         |
| Baylham    | Ringshall      |
| Coddenham  | Somersham      |
| Darmsden   | Willisham      |

## Data sources

Category	Indicator	Source
Demographic Profile	Quinary population table 2024	ONS 2024 mid-year population estimates
	Population pyramid 2024	ONS 2024 mid-year population estimates
	Ethnicity 2021	ONS 2021 Census
Economy	Employment by broad industrial sector 2024	ONS Business Register and Employment Survey via NOMIS
Labour market	Claimant count: The number of people claiming Jobseeker's Allowance plus those who claim Universal Credit who are out of work (% 16-64 population) January 2021-February 2026	DWP via NOMIS
Education	School information and attainment 2023-2025	Suffolk County Council CYP iHub
	% 16-17-year-olds NEET (Not in Employment, Education or Training) March 2021 to February 2026	Suffolk County Council CYP iHub via the Suffolk Observatory
Deprivation	Index of Multiple Deprivation 2025	Ministry of Housing, Communities and Local Government
Health	Life expectancy at birth 2016-2020 (2018-2020 for comparator areas)	Office for Health Improvement and Disparities
Health	Standardised mortality ratio for deaths from all causes, cancer, cardiovascular disease, and from causes considered preventable (under 75 years), 2016-2020 (2019-2023 for comparator areas). The standardised mortality ratio is the ratio of observed deaths in the study group to expected deaths in the general population	Office for Health Improvement and Disparities
Community Safety	Recorded crime rate per 1,000 resident population February 2025 to January 2026	Data.police.uk via the Suffolk Observatory

For more data and information about Bosmere Electoral Division, see the Suffolk Observatory [www.suffolkobservatory.info](http://www.suffolkobservatory.info)

