

Whitton

County Electoral Division profile
May 2026

This division comprises Whitton Ward in its entirety, and part of Castle Hill Ward



Contents

- Demographic Profile: Age & Ethnicity
- Economy and Labour Market
- Schools & NEET
- Index of Multiple Deprivation
- Health
- Crime & Community Safety
- Additional Information
- Data Sources

Electoral Division Profiles: an introduction

These profiles have been produced to support elected members, constituents and other interested parties in understanding the demographic, economic, social and educational profile of their neighbourhoods. We have used the latest data available at the time of publication.

Much more data is available from national and local sources than is captured here, but it is hoped that the profile will be a useful starting point for discussion, where local knowledge and experience can be used to flesh out and illuminate the information presented here.

The profile can be used to help look at some fundamental questions e.g.

- Does the age profile of the population match or differ from the national profile?
- Is there evidence of the ageing profile of the county in all the wards in the Division or just some?
- How diverse is the community in terms of ethnicity?
- What is the impact of deprivation on families and residents?
- Does there seem to be a link between deprivation and school performance?
- What is the breakdown of employment sectors in the area?
- Is it a relatively healthy area compared to the rest of the district or county?
- What sort of crime is prevalent in the community?

A vast amount of additional data is available on the **Suffolk Observatory**

www.suffolkobservatory.info

The Suffolk Observatory is a free online resource that contains all Suffolk's vital statistics; it is the one-stop-shop for information and intelligence about Suffolk. Through data, reports and maps, the Suffolk Observatory provides a comprehensive picture of the County. It is a great source for useful facts and figures that can be used for writing reports and presentations, informing strategic and business planning, preparing funding applications or supporting academic research. Data is presented around the key themes of population, children and young people, health and social care, housing, crime and community safety, deprivation, economy and employment and environment. All areas of the county are covered, right down to district, electoral division, ward and parish level, with information easily accessible in a variety of formats. You can also build your own reports for custom areas.

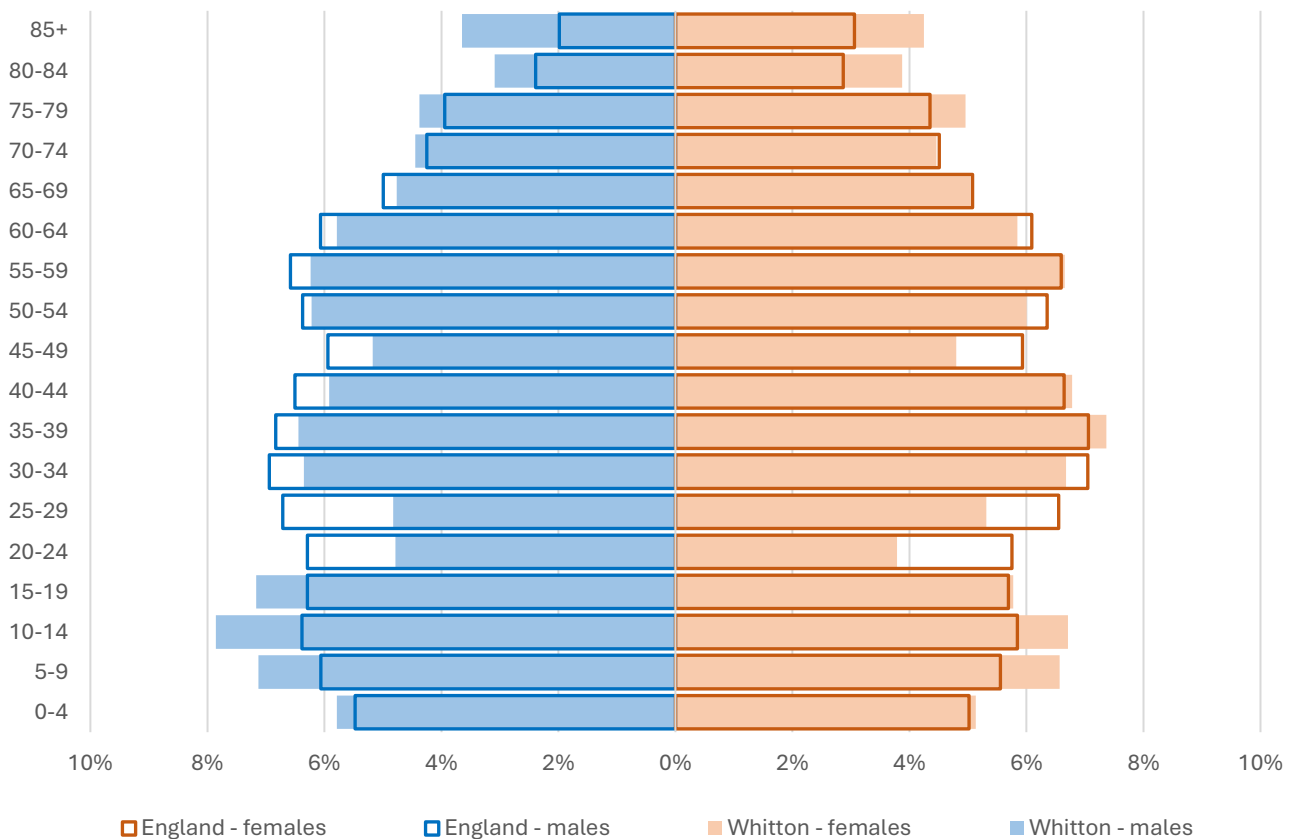
Technical Notes:

1. Where electoral divisions do not exactly match the boundaries at which the data is available (e.g. ward, Output Area or Lower Super Output Area), we have adopted a "best-fit" approach to produce a dataset.
2. District, county and national level data is provided where possible to provide a context for comparisons.

Demographic Profile - Age

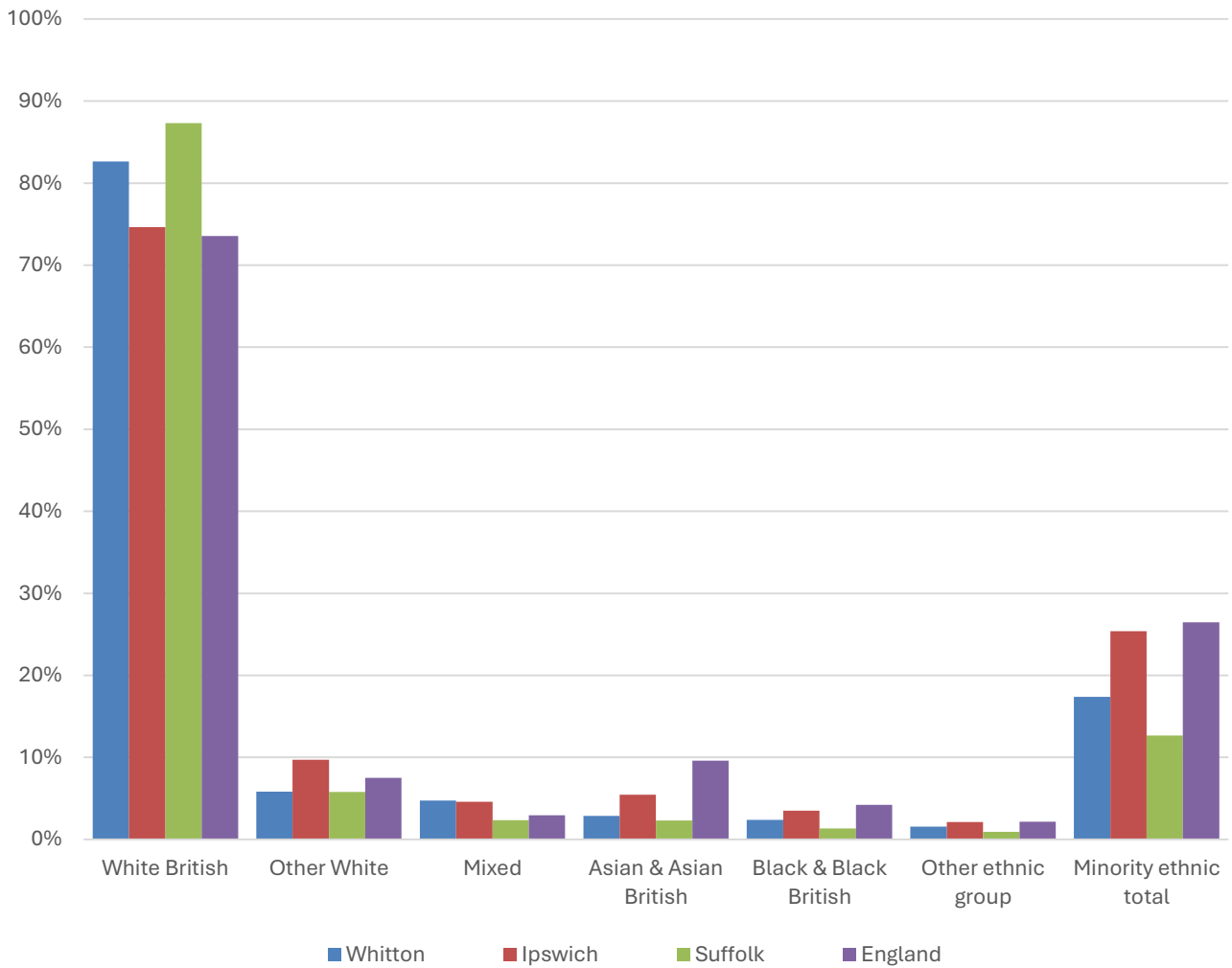
In mid-2024, the estimated population of Whitton stood at 11,020, an increase of 7.3% over the past decade. The age structure of the component wards and the division as a whole is set out below.

	Whitton Division	Whitton Ward	Castle Hill Ward
All Ages	11,020	8,482	2,538
0-4	601	455	146
5-9	754	560	194
10-14	801	644	157
15-19	711	555	156
20-24	471	347	124
25-29	559	424	135
30-34	718	551	167
35-39	762	581	181
40-44	701	546	155
45-49	549	424	125
50-54	673	518	155
55-59	711	547	164
60-64	641	500	141
65-69	541	412	129
70-74	491	379	112
75-79	515	396	119
80-84	385	307	78
85+	436	336	100



- The age pyramid for Whitton division is quite unusual. There is a larger-than-average proportion of children and young people, particularly aged 5-14, but at most only an average proportion of younger adults/parents of the child population.
- There is also an above average proportion of retirement age people in the division.
- The most common age group in the division is 10-14-year-olds (7.3% of the local population), followed by 35-39-year-olds (6.9%), and 5-9-year-olds (6.8%).
- Just over a quarter of the population of Whitton is aged under 20, and just over a fifth is of retirement age; both slightly above average.

Demographic Profile - Ethnicity

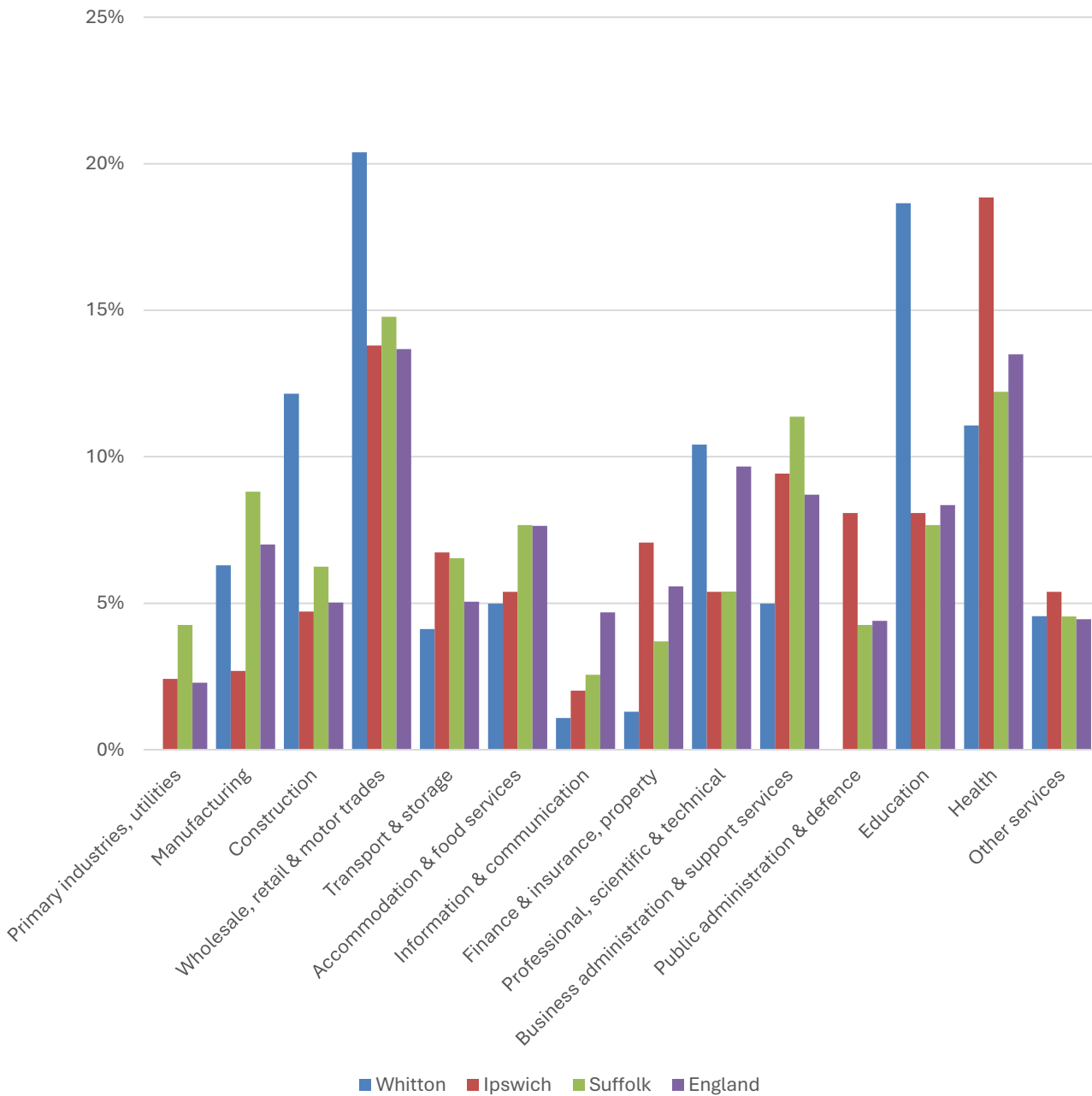


- According to the latest data (2021 Census), 82.6% of the population of Whitton is White British.
- There were 1,878 (17.4%) residents from minority ethnic groups in the division, around 1.4 times the proportion in Suffolk overall, and 70% of the England average.
- Whitton’s population is less ethnically diverse than that of Ipswich Borough as a whole, largely driven by proportionally smaller Other White and Asian/Asian British communities in the division.

	All people		White British		Other White		Mixed		Asian and Asian British		Black and Black British		Other Ethnic Group		Total minority ethnic population	
	Count	%	Count	%	Count	%	Count	%	Count	%	Count	%	Count	%	Count	%
Whitton	10,807		8,929	82.6	630	5.8	511	4.7	309	2.9	258	2.4	170	1.6	1,878	17.4
Ipswich	139,643		104,208	74.6	13,549	9.7	6,409	4.6	7,611	5.5	4,882	3.5	2,984	2.1	35,435	25.4
Suffolk	760,687		664,205	87.3	44,066	5.8	17,807	2.3	17,483	2.3	10,168	1.3	6,958	0.9	96,482	12.7
England				73.5		7.5		3.0		9.6		4.2		2.2		26.5

Economy

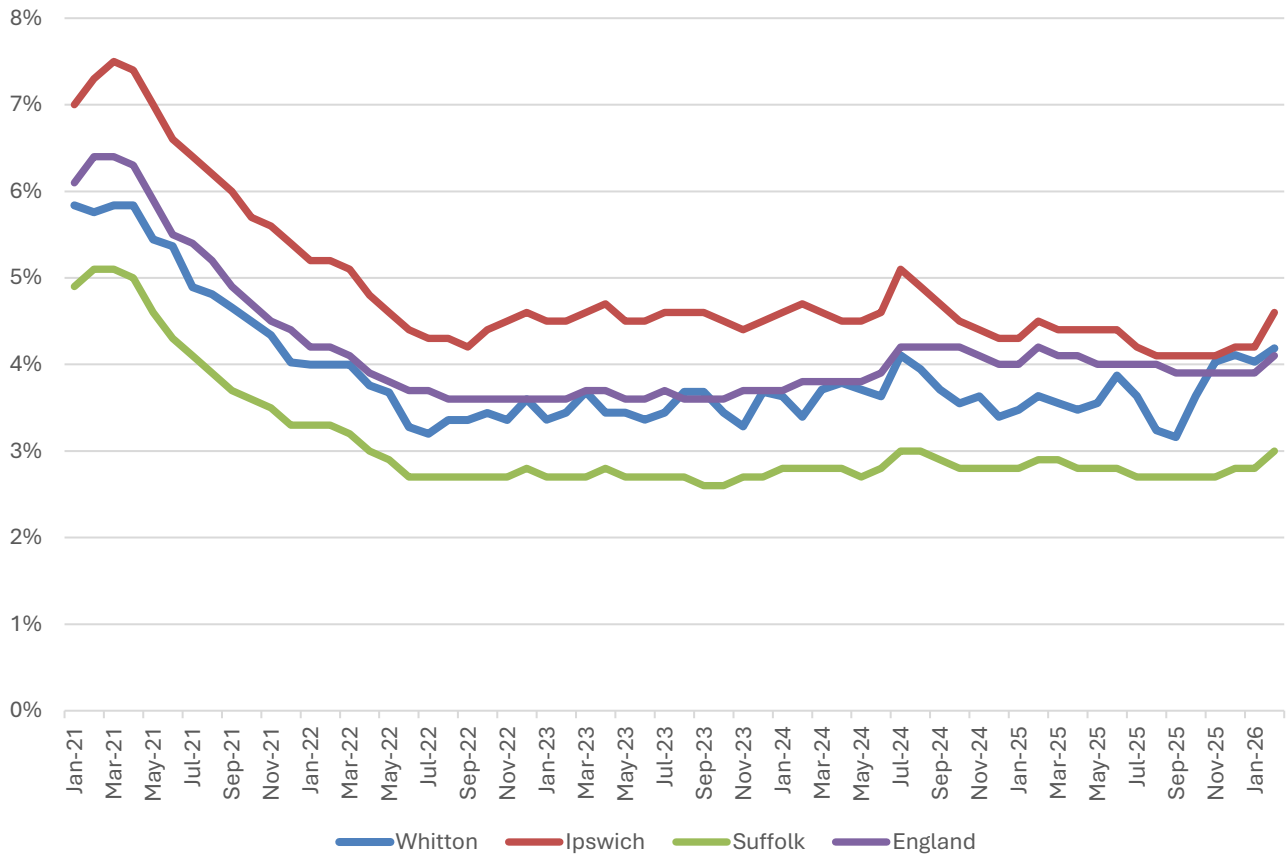
There are around 2,300 people employed in Whitton.



- Wholesale, retail and motor trades and education stand out as the two largest sectors in Whitton in terms of job numbers.
- Both sectors account for a significantly larger proportion of jobs locally than they do nationally.
- Construction (12% of local employment), health, and professional, scientific and technical activities are also important sectors in Whitton.

Labour Market

Out-of-work benefit claimant rate



- In common with Ipswich, Suffolk and England as a whole, Whitton saw a steady decline in the proportion of the working age population claiming out-of-work benefits during 2021 and into 2022 following a peak during the COVID-19 pandemic.
- Since then, the claimant rate has been fairly stable at around 3.5-4%.
- In February 2026 (the latest available data), 4.2% of 16-64-year-olds were claiming out-of-work benefits in the division.
- The claimant rate in the division tends to be similar to the national benchmark, consistently above the Suffolk figure, but below the overall Ipswich Borough rate.

Schools

School Information

Schools in the Division

Name	Phase	Academy Status	No. pupils	Average cohort size at:			
				Foundation Stage (age 4-7)	KS2 (age 7-11)	KS4 (age 14-16)	KS5 (age 16-18)
Castle Hill Infant School	Primary	AS	251	71			
Castle Hill Junior School	Primary	AS	288		78		
St Pancras Catholic Primary School	Primary	AC	153	18	30		
The Beeches Community Primary School	Primary	AC	393	45	52		
Ormiston Endeavour Academy	Secondary	AS	793			94	
Thomas Wolsey Ormiston Academy	Special	AC	105	7	8	10	

Academy Status key: AS = Academy Sponsored, AC = Academy Converter, LA = LA Maintained, F = Free

Ofsted information

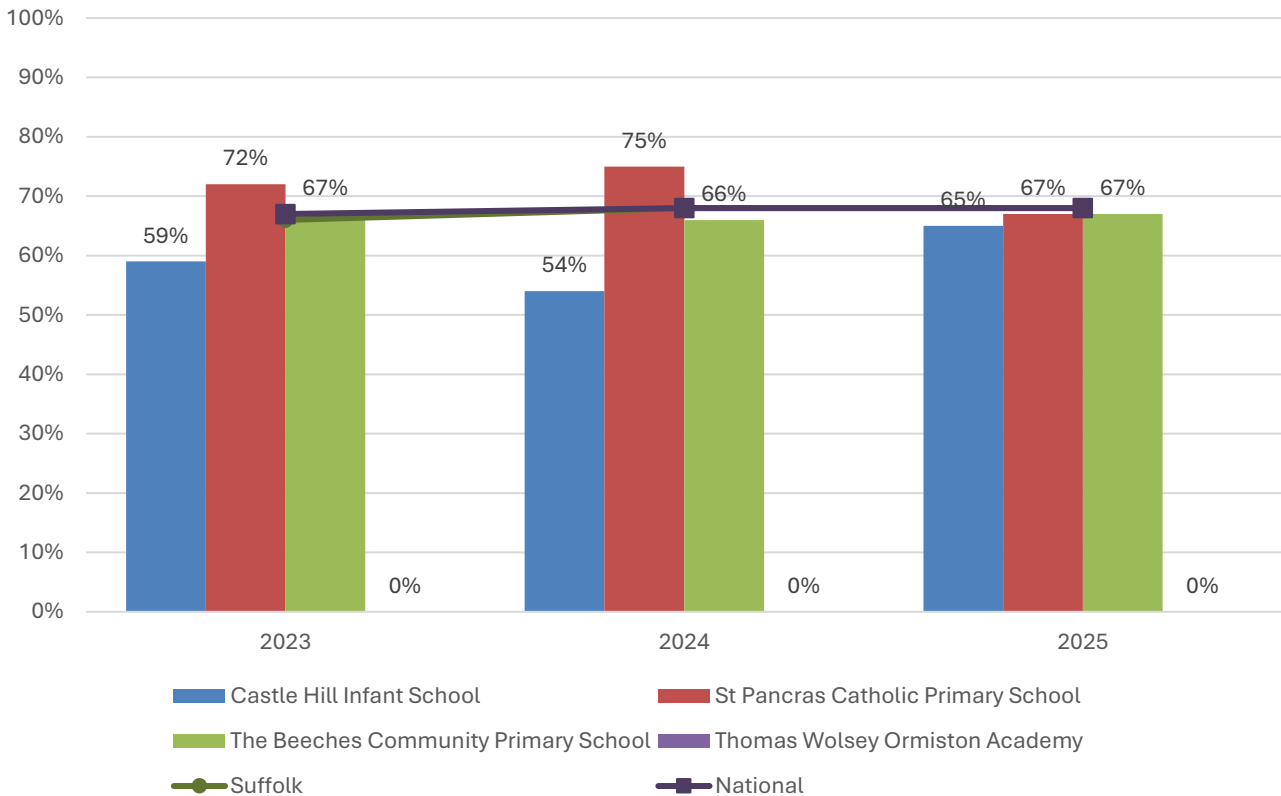
Name	Overall effectiveness	Effectiveness of leadership and management	Behaviour and attitudes	Personal development	Early years provision (if applicable)	Quality of education	Last inspection date
Castle Hill Infant School	2	2	9	9	2	9	16/01/2019
Castle Hill Junior School	2	2	2	2	9	2	05/03/2024
St Pancras Catholic Primary School	2	2	2	2	2	2	12/09/2023
The Beeches Community Primary School	2	2	9	9	9	9	05/10/2012
Ormiston Endeavour Academy	2	2	9	9	9	9	09/12/2016
Thomas Wolsey Ormiston Academy	2	2	2	1	2	2	16/11/2021

Code	Judgement	Code	Judgement
0	Insufficient evidence	SM	Special measures
1	Outstanding	8	Does not apply
2	Good	9	No judgement
3	Requires improvement	Null	No data available
4	Inadequate	Not judged	Not judged
SWK	Serious weaknesses	5	No overall grade

School Attainment

Foundation Stage Profile (reception)

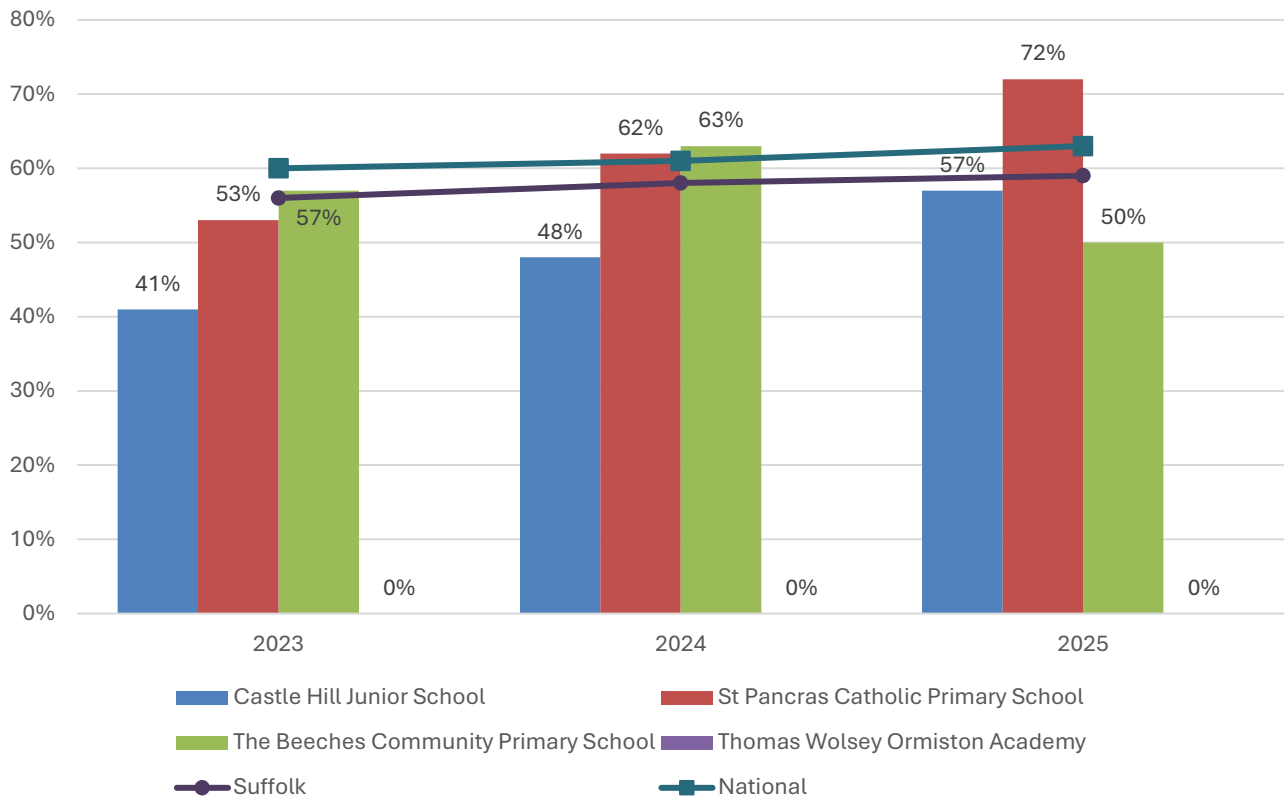
% pupils achieving Good Level of Development (GLD)



- In 2025, the percentage of pupils to achieve a Good Level of Development at Foundation Stage was 65% at Castle Hill Infant School, 67% at St Pancras Catholic Primary School, 67% at The Beeches Community Primary School, and 68% nationally.
- Foundation Stage attainment at schools in the division has been largely consistent over the last three years, though no school has recorded above average attainment during this period.
- At The Beeches Community Primary School, FS attainment has been very consistent and always within a single percentage point of the national benchmark.
- St Pancras Catholic Primary School saw above average attainment in 2023 and 2024, before it dipped one percentage point below the national figure in 2025.
- The proportion of pupils to achieve a Good Level of Development at Foundation Stage at Castle Hill Infant School has been consistently below the national percentage, but the gap closed to three percentage points in 2025.

Key Stage 2 (age 11)

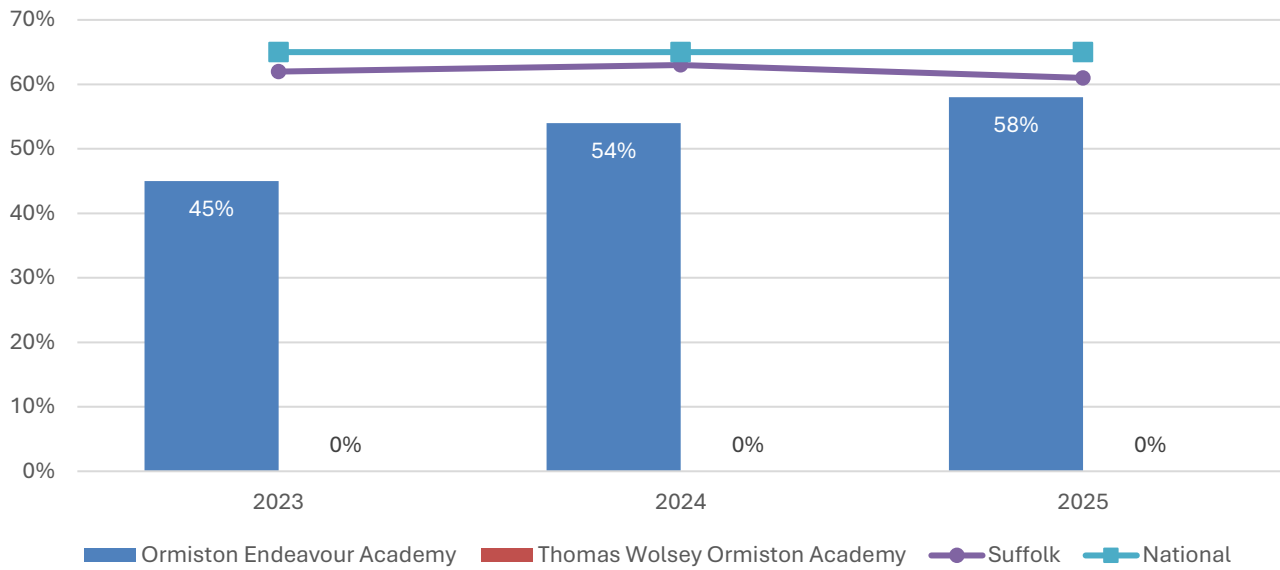
% pupils achieving the Expected Level or better in Reading, Writing and Mathematics



- Key stage 2 attainment at St Pancras Catholic Primary School has improved year on year from 2023 to 2025 and was above the national benchmark in the latter two years of this period.
- The percentage of pupils to achieve the expected level or better in reading, writing and mathematics has also improved throughout the last three years at Castle Hill Junior School, though remained below the national average throughout.
- At The Beeches Community Primary School, KS2 attainment was two percentage points above the national figure in 2024, but below it in 2023 and 2025.

Key Stage 4 (GCSE) (age 16)

% pupils achieving level 4-9 in English and Mathematics



- Key Stage 4 attainment at Ormiston Endeavour Academy has improved throughout the last three years, but remained below the national benchmark throughout.
- According to the most recent data, the percentage of pupils achieving level 4-9 in English and mathematics at Ormiston Endeavour Academy was three percentage points below the county figure, and seven percentage points below the national benchmark.

NEET % (Not in Education, Employment or Training)



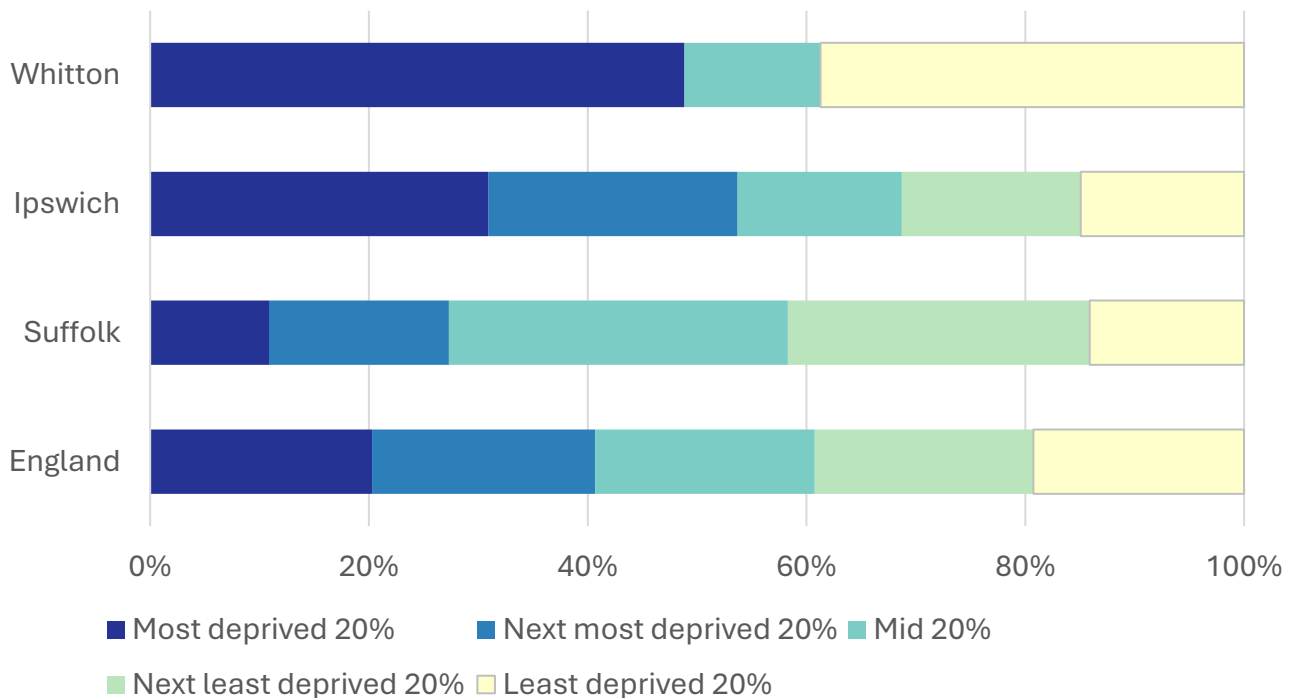
- In February 2026, 7.7% of 16-17-year-olds in Whitton were classified as NEET (not in education, employment or training).
- NEET levels fluctuate considerably according to the time of year and due to small numbers of 16-17-year-olds in the division, typically being at their lowest at the beginning of a new school year.
- Since late 2022, the proportion of children who are NEET in Whitton has been consistently above the district and county figures.

Index of Multiple Deprivation (IMD) 2025 (see map overleaf)

The IMD combines a number of indicators, chosen to cover a range of economic, social and housing issues, into a single deprivation score for each small area in England. This allows each area to be ranked relative to one another according to their level of deprivation. Small areas (Lower Super Output Areas, average population 1,700) are most commonly described as being in 1 of 5 quintile bands. The bottom quintile represents the 20% of areas that are the most deprived in England; these are shaded pale yellow on the map. The top quintile represents the least deprived areas in England and is shaded dark blue.

The Index is widely used to analyse patterns of deprivation, identify areas that would benefit from special initiatives or programmes and as a tool to determine eligibility for specific funding streams.

The chart below shows the percentage of the population of the division that live in areas ranked among each of the five quintiles of deprivation, alongside the district, county and England comparators.



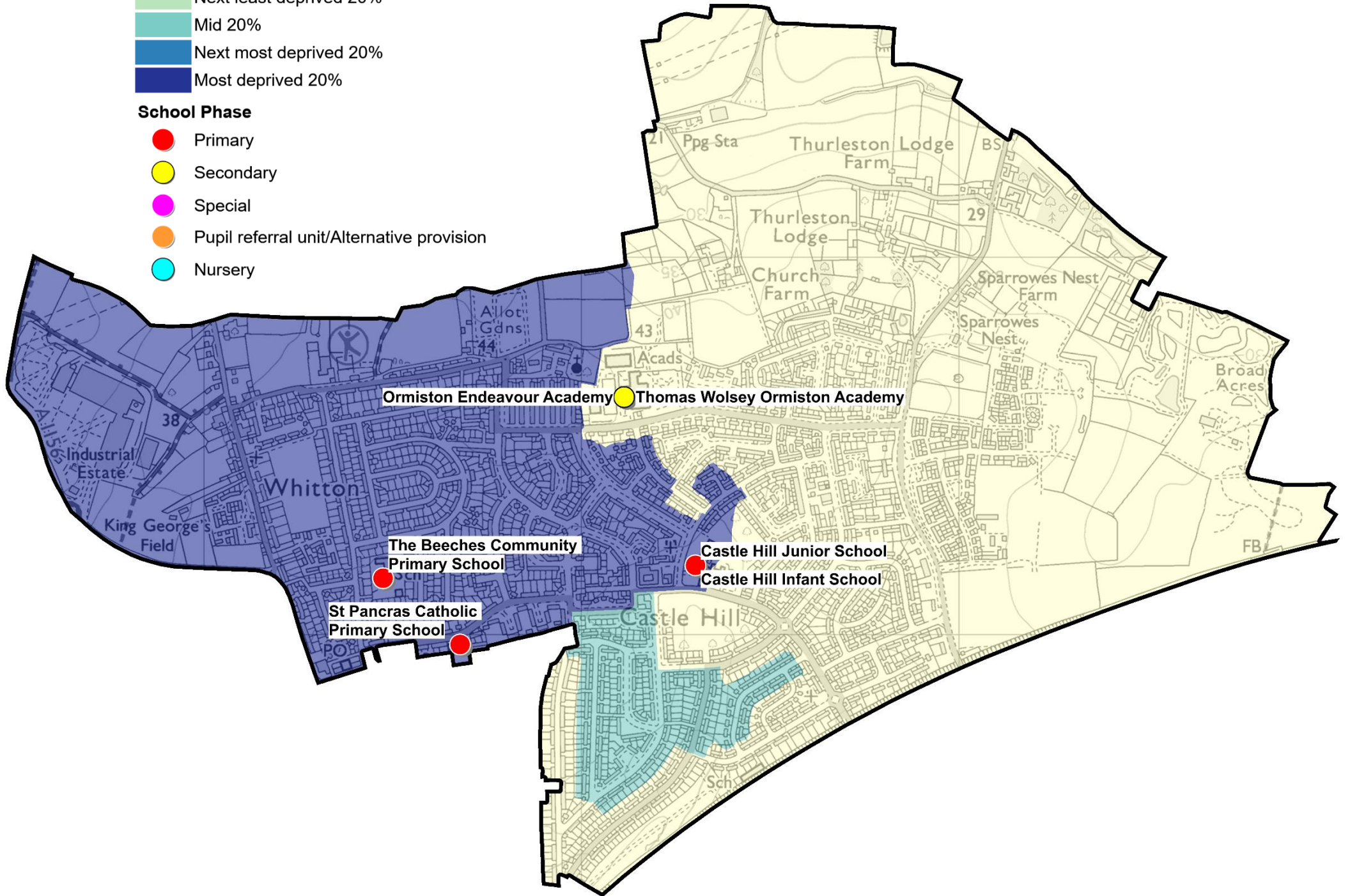
- The 2025 IMD shows that deprivation levels in Whitton are extremely varied, with most of the division split between the most deprived and least deprived quintiles.
- Just under half of the division live in areas that are ranked among the most deprived fifth of places in England.
- 39% of the population of Whitton live in areas ranked at the other end of the deprivation spectrum, in the least deprived quintile.
- The remaining 12% of Whitton's population live in neighbourhoods ranked in the middle quintile.
- See the map overleaf for the distribution of IMD 2025 results across the division.

IMD 2025 quintile

- Least deprived 20%
- Next least deprived 20%
- Mid 20%
- Next most deprived 20%
- Most deprived 20%

School Phase

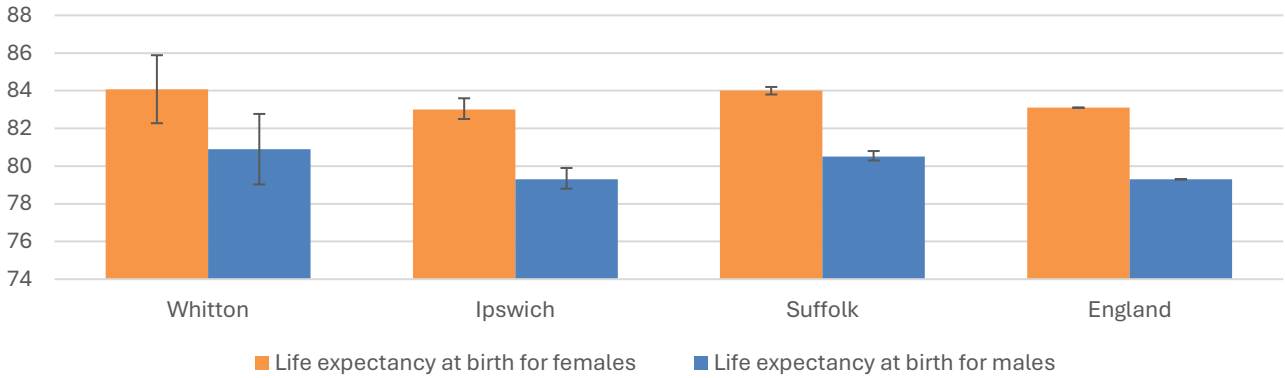
- Primary
- Secondary
- Special
- Pupil referral unit/Alternative provision
- Nursery



Health

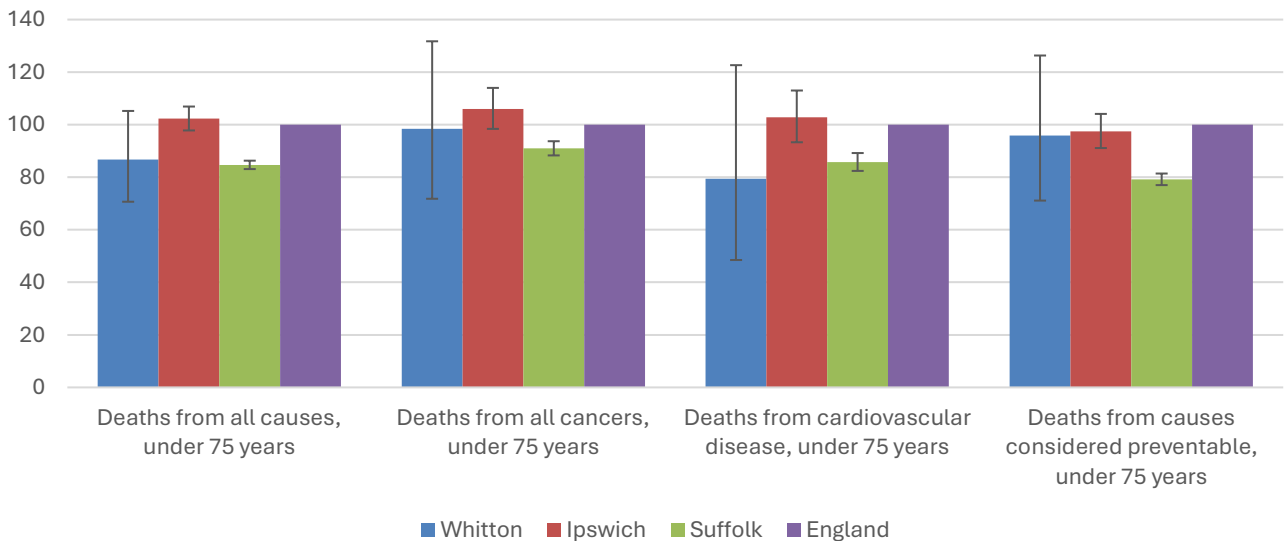
The local data used here is based on relatively small numbers. The confidence limits provide an indication of the reliability of the data. The 95% confidence intervals utilised on the chart provide a range within which there is 95% chance of the true result lying.

Life expectancy at birth



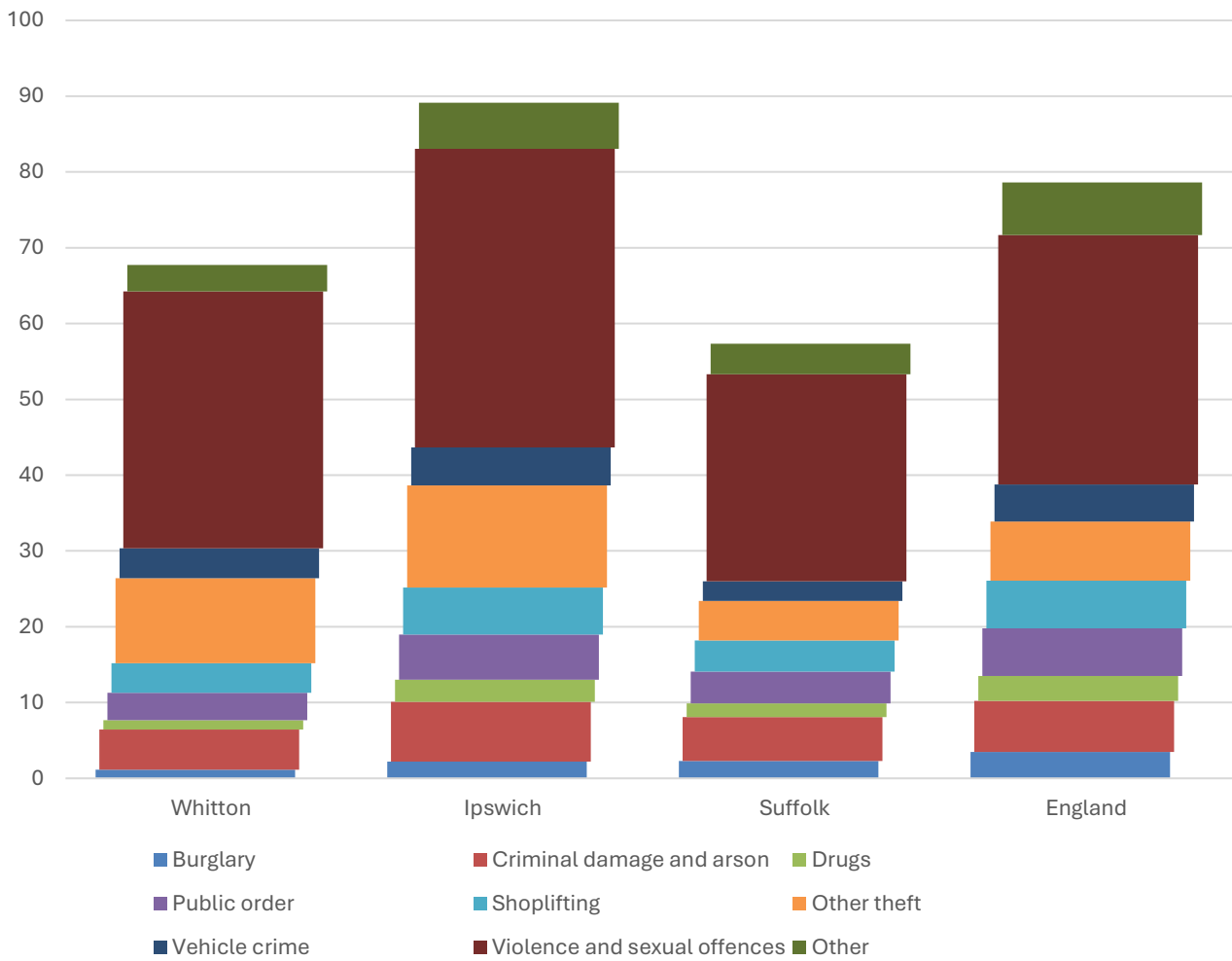
- The latest life expectancy at birth estimates for Whitton are 84.1 for females (the England figure is 83.1), and 80.9 for males (compared to 79.3 nationally).
- Life expectancy for both males and females in the division are statistically similar to the England figures.

Deaths, under 75 years, standardised mortality ratio



- Estimated standardised mortality ratios for early deaths from all causes, cancers, circulatory disease and causes considered preventable in Whitton are below 100, indicating that deaths in under 75s due to these causes are lower than in England.
- Confidence intervals around these estimates are wide for local data, however, and early deaths from all of the causes shown here are statistically similar in the division to Ipswich, Suffolk, and England.
- The standardised mortality ratio data shown here means that for every 100 early deaths from all causes across England as a whole, there are an estimated 87 comparable deaths in Whitton.

Crime & Community Safety



- Recorded crime in Whitton is higher than the county level but below the Ipswich Borough rate.
- In the year to the end of January 2026, there were 68 recorded crimes per 1,000 residents in the division, compared to 89 in Ipswich, and 57 countywide.
- By far the most common type of crime recorded during this period was violence and sexual offences, which accounted for half of all recorded crimes in the division.

Data sources

Category	Indicator	Source
Demographic Profile	Quinary population table 2024	ONS 2024 mid-year population estimates
	Population pyramid 2024	ONS 2024 mid-year population estimates
	Ethnicity 2021	ONS 2021 Census
Economy	Employment by broad industrial sector 2024	ONS Business Register and Employment Survey via NOMIS
Labour market	Claimant count: The number of people claiming Jobseeker's Allowance plus those who claim Universal Credit who are out of work (% 16-64 population) January 2021-February 2026	DWP via NOMIS
Education	School information and attainment 2023-2025	Suffolk County Council CYP iHub
	% 16-17-year-olds NEET (Not in Employment, Education or Training) March 2021 to February 2026	Suffolk County Council CYP iHub via the Suffolk Observatory
Deprivation	Index of Multiple Deprivation 2025	Ministry of Housing, Communities and Local Government
Health	Life expectancy at birth 2016-2020 (2018-2020 for comparator areas)	Office for Health Improvement and Disparities
Health	Standardised mortality ratio for deaths from all causes, cancer, cardiovascular disease, and from causes considered preventable (under 75 years), 2016-2020 (2019-2023 for comparator areas). The standardised mortality ratio is the ratio of observed deaths in the study group to expected deaths in the general population	Office for Health Improvement and Disparities
Community Safety	Recorded crime rate per 1,000 resident population February 2025 to January 2026	Data.police.uk via the Suffolk Observatory

For more data and information about Whitton Electoral Division, see the Suffolk Observatory www.suffolkobservatory.info

