

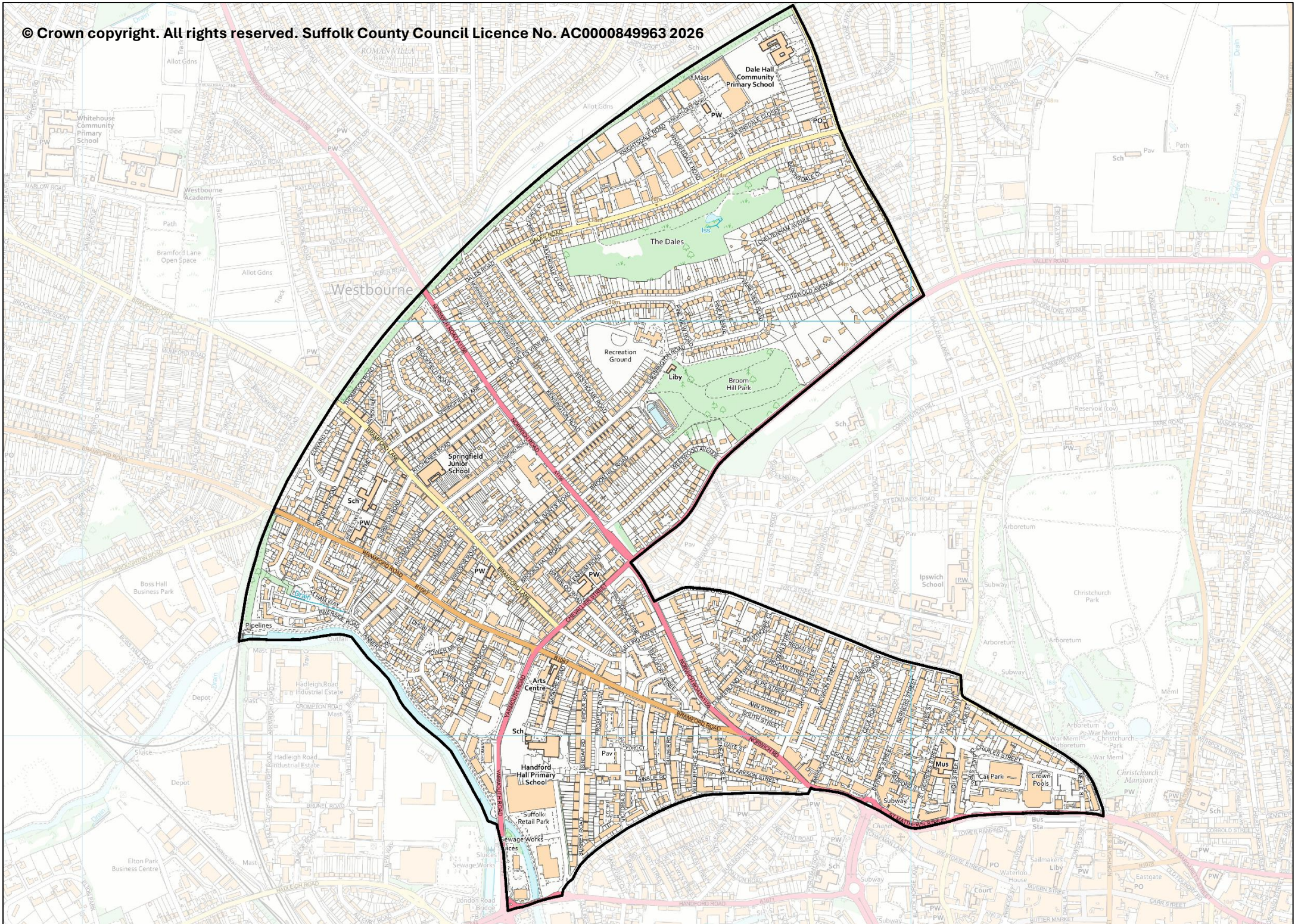
Westgate

County Electoral Division profile

May 2026

This division comprises parts of Castle Hill, St Margaret's, and Westgate Wards





Contents

- Demographic Profile: Age & Ethnicity
- Economy and Labour Market
- Schools & NEET
- Index of Multiple Deprivation
- Health
- Crime & Community Safety
- Additional Information
- Data Sources

Electoral Division Profiles: an introduction

These profiles have been produced to support elected members, constituents and other interested parties in understanding the demographic, economic, social and educational profile of their neighbourhoods. We have used the latest data available at the time of publication.

Much more data is available from national and local sources than is captured here, but it is hoped that the profile will be a useful starting point for discussion, where local knowledge and experience can be used to flesh out and illuminate the information presented here.

The profile can be used to help look at some fundamental questions e.g.

- Does the age profile of the population match or differ from the national profile?
- Is there evidence of the ageing profile of the county in all the wards in the Division or just some?
- How diverse is the community in terms of ethnicity?
- What is the impact of deprivation on families and residents?
- Does there seem to be a link between deprivation and school performance?
- What is the breakdown of employment sectors in the area?
- Is it a relatively healthy area compared to the rest of the district or county?
- What sort of crime is prevalent in the community?

A vast amount of additional data is available on the **Suffolk Observatory**

www.suffolkobservatory.info

The Suffolk Observatory is a free online resource that contains all Suffolk's vital statistics; it is the one-stop-shop for information and intelligence about Suffolk. Through data, reports and maps, the Suffolk Observatory provides a comprehensive picture of the County. It is a great source for useful facts and figures that can be used for writing reports and presentations, informing strategic and business planning, preparing funding applications or supporting academic research. Data is presented around the key themes of population, children and young people, health and social care, housing, crime and community safety, deprivation, economy and employment and environment. All areas of the county are covered, right down to district, electoral division, ward and parish level, with information easily accessible in a variety of formats. You can also build your own reports for custom areas.

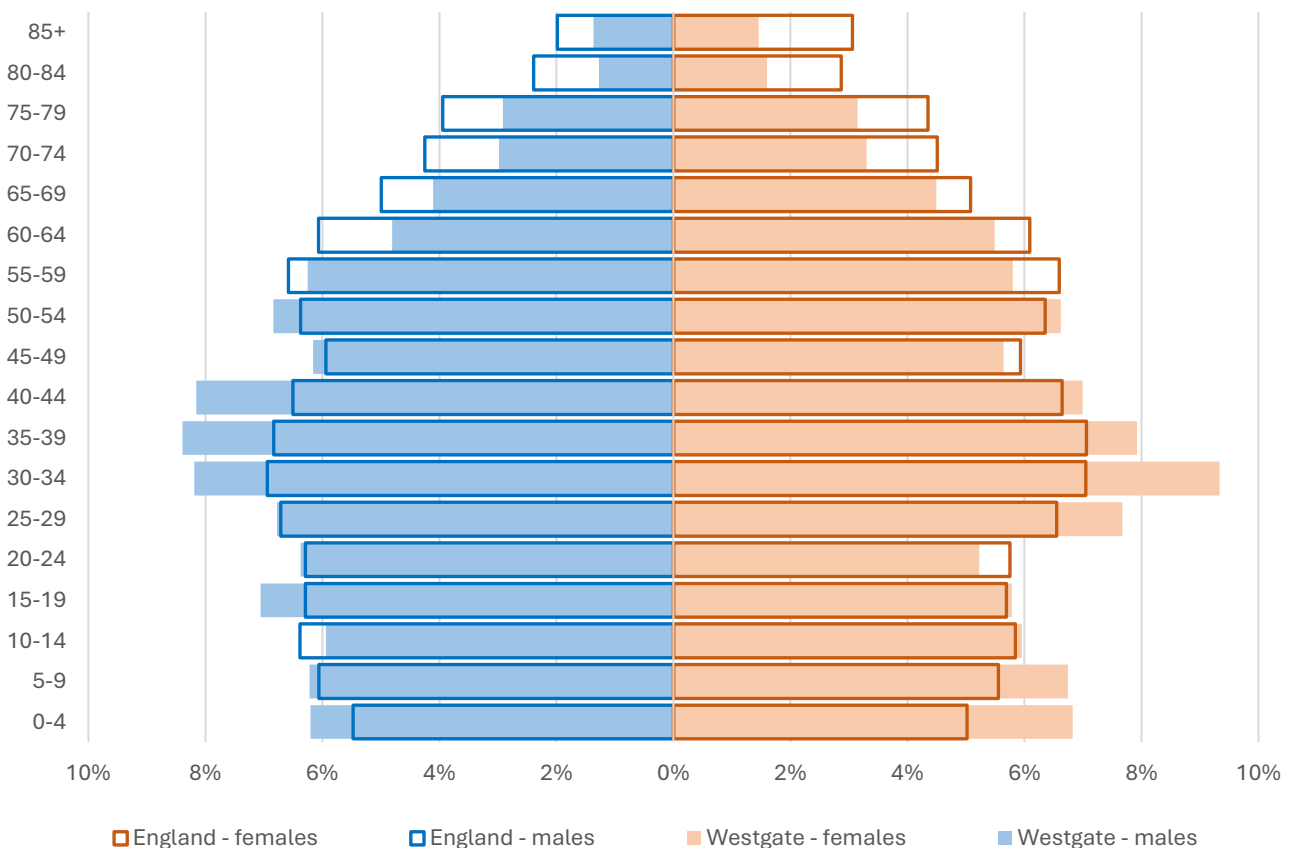
Technical Notes:

1. Where electoral divisions do not exactly match the boundaries at which the data is available (e.g. ward, Output Area or Lower Super Output Area), we have adopted a "best-fit" approach to produce a dataset.
2. District, county and national level data is provided where possible to provide a context for comparisons.

Demographic Profile - Age

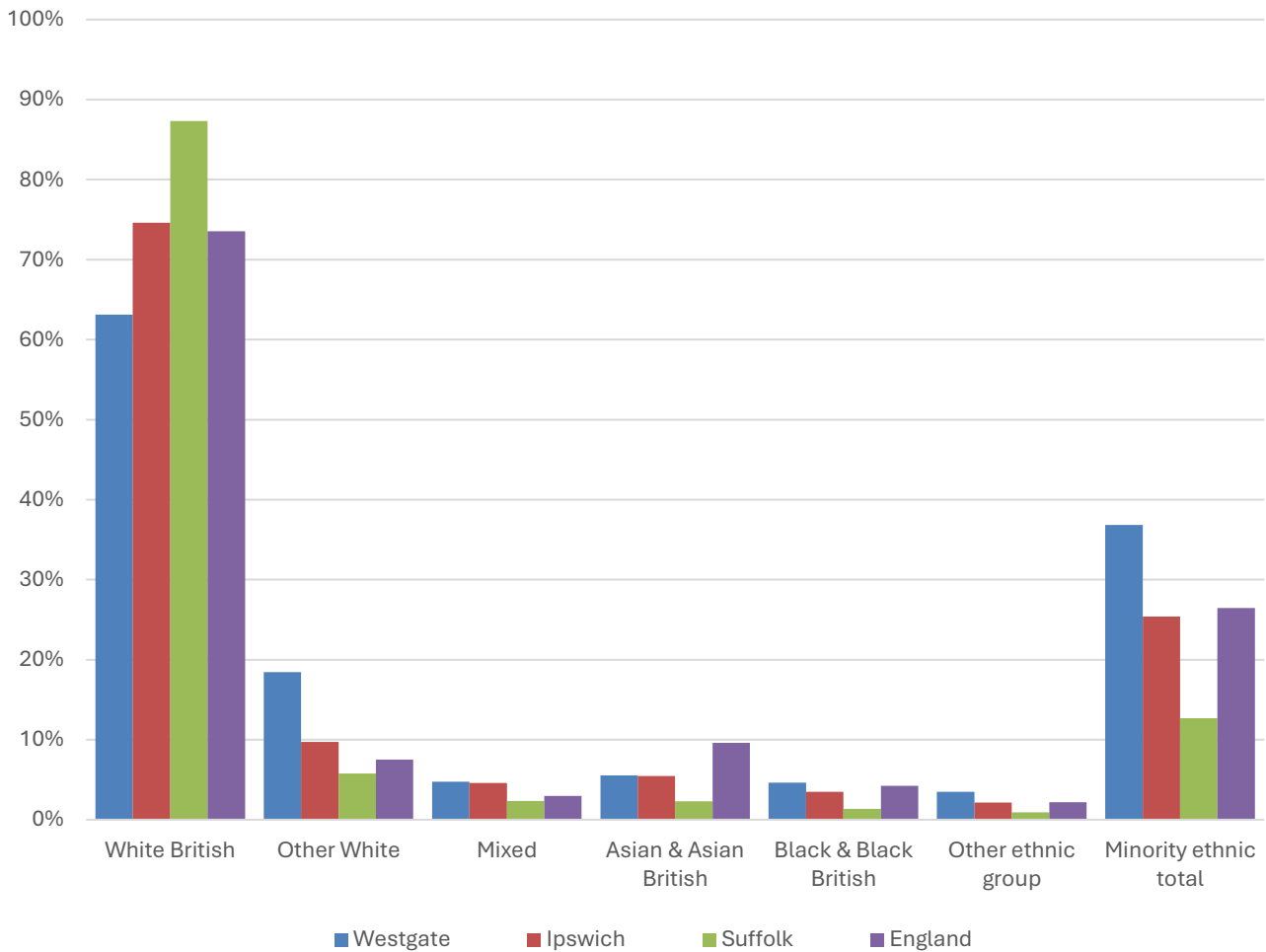
In mid-2024, the estimated population of Westgate stood at 12,898, a decrease of 4.7% over the past decade. The age structure of the component wards and the division as a whole is set out below.

	Westgate Division	Westgate Ward	Castle Hill Ward	St Margaret's Ward
All Ages	12,898	9,965	2,396	537
0-4	840	705	116	19
5-9	836	676	137	23
10-14	767	617	117	33
15-19	828	675	114	39
20-24	748	614	120	14
25-29	932	796	118	18
30-34	1,130	988	119	23
35-39	1,052	876	140	36
40-44	977	775	160	42
45-49	761	606	123	32
50-54	868	656	179	33
55-59	777	554	184	39
60-64	664	451	169	44
65-69	555	364	154	37
70-74	405	247	126	32
75-79	391	213	151	27
80-84	185	89	82	14
85+	182	63	87	32



- The age pyramid for Westgate division is younger than the England average. Retirement age people make up 13.3% of the local population, compared to 18.7% nationally.
- The most common age group in the division is 30-34-year-olds (8.7% of the local population), followed by 35-39-year-olds (8.2%), and 40-44-year-olds (7.6%). These age groups are clearly overrepresented in the division.
- Just over a quarter of the population of Westgate is aged under 20.

Demographic Profile - Ethnicity

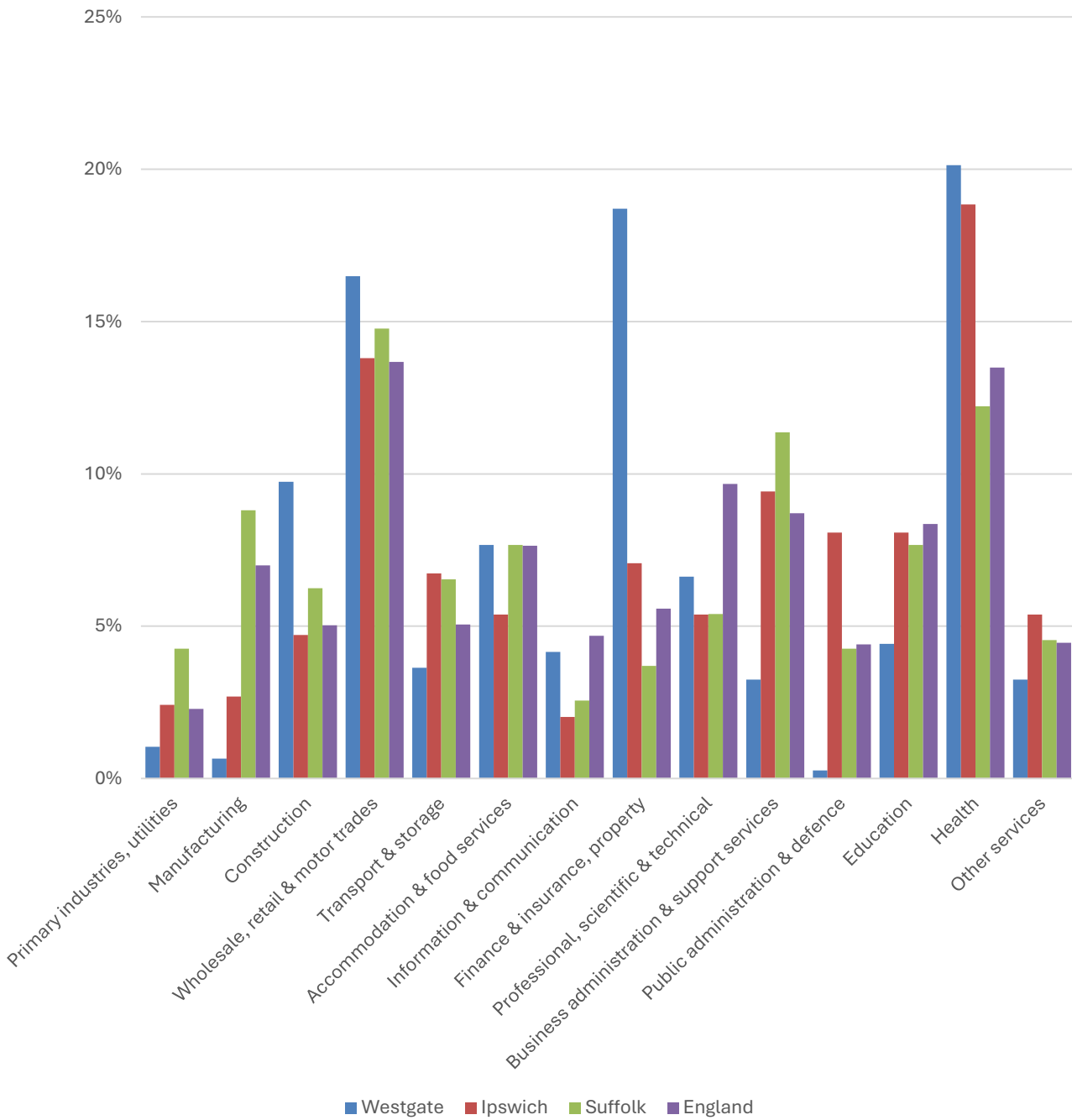


- According to the latest data (2021 Census), 63.1% of the population of Westgate is White British.
- There were 4,849 (36.9%) residents from minority ethnic groups in the division, almost three times the proportion in Suffolk overall, and 1.4 times the England average.
- Westgate is also more ethnically diverse than Ipswich Borough, driven largely by the high proportion of Other White residents in the division.

	All people		White British		Other White		Mixed		Asian and Asian British		Black and Black British		Other Ethnic Group		Total minority ethnic population	
	Count	%	Count	%	Count	%	Count	%	Count	%	Count	%	Count	%	Count	%
Westgate	13,156		8,307	63.1	2,425	18.4	623	4.7	730	5.5	611	4.6	460	3.5	4,849	36.9
Ipswich	139,643		104,208	74.6	13,549	9.7	6,409	4.6	7,611	5.5	4,882	3.5	2,984	2.1	35,435	25.4
Suffolk	760,687		664,205	87.3	44,066	5.8	17,807	2.3	17,483	2.3	10,168	1.3	6,958	0.9	96,482	12.7
England				73.5		7.5		3.0		9.6		4.2		2.2		26.5

Economy

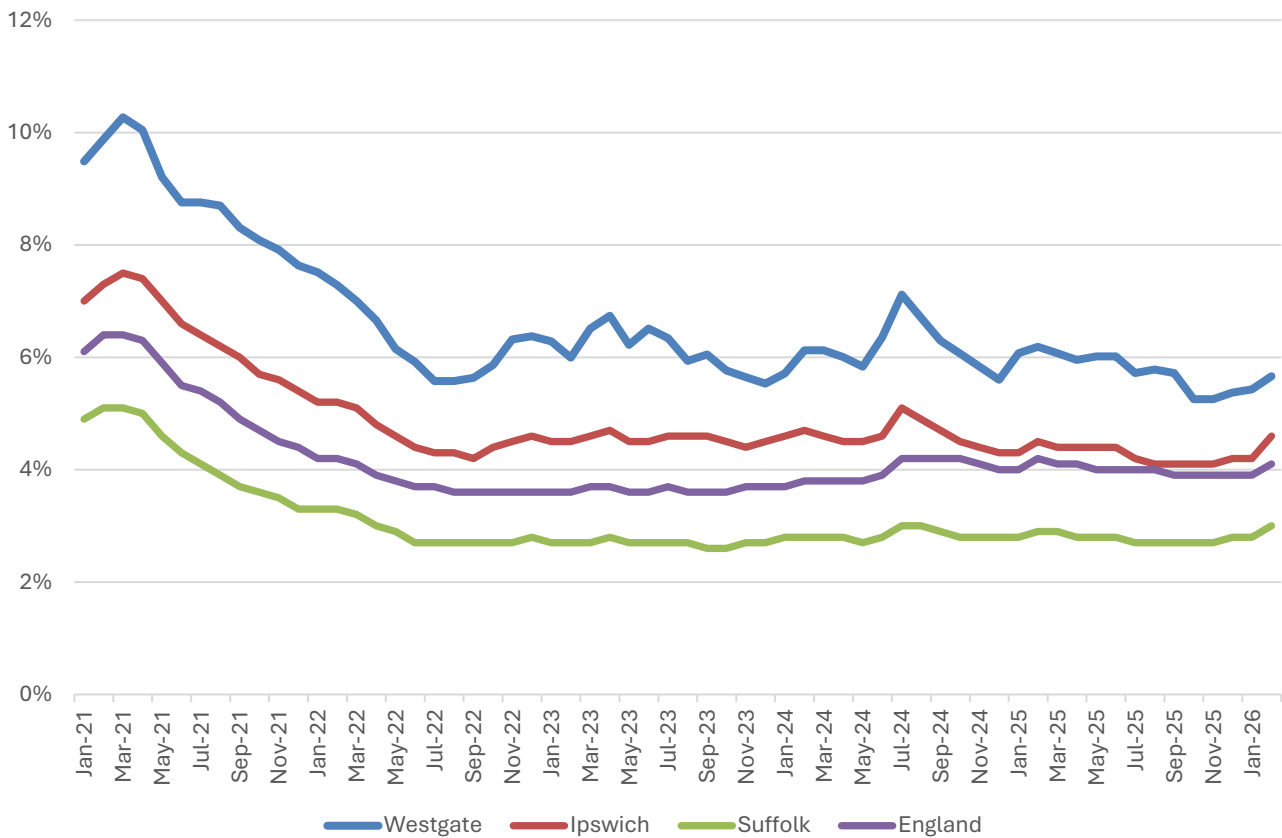
There are around 3,900 people employed in Westgate.



- Health (20% of local jobs), finance, insurance and property (18.7%) and wholesale, retail and motor trades (16.5%) are the three largest employers in Westgate, together providing more than half of jobs in the division.
- Construction is also relatively important locally, accounting for nearly a tenth of jobs in Westgate, compared to 5% nationally.

Labour Market

Out-of-work benefit claimant rate



- In common with Ipswich, Suffolk and England as a whole, Westgate saw a steady decline in the proportion of the working age population claiming out-of-work benefits during 2021 and into 2022 following a peak during the COVID-19 pandemic.
- Since then, the claimant rate has hovered at around 6%.
- In February 2026 (the latest available data), 5.7% of 16-64-year-olds were claiming out-of-work benefits in the division.
- The claimant rate in the division is consistently higher than the district, county and national benchmarks.

Schools

School Information

Schools in the Division

Name	Phase	Academy Status	No. pupils	Average cohort size at:			
				Foundation Stage (age 4-7)	KS2 (age 7-11)	KS4 (age 14-16)	KS5 (age 16-18)
Dale Hall Community Primary School	Primary	AC	412	57	58		
Handford Hall Primary School	Primary	AC	360	47	51		
Springfield Infant School & Nursery	Primary	AC	287	89			
Springfield Junior School	Primary	AC	354		83		
Westbridge Academy	Pupil referral unit/ Alternative provision	AC	4				

Academy Status key: AS = Academy Sponsored, AC = Academy Converter, LA = LA Maintained, F = Free

Ofsted information

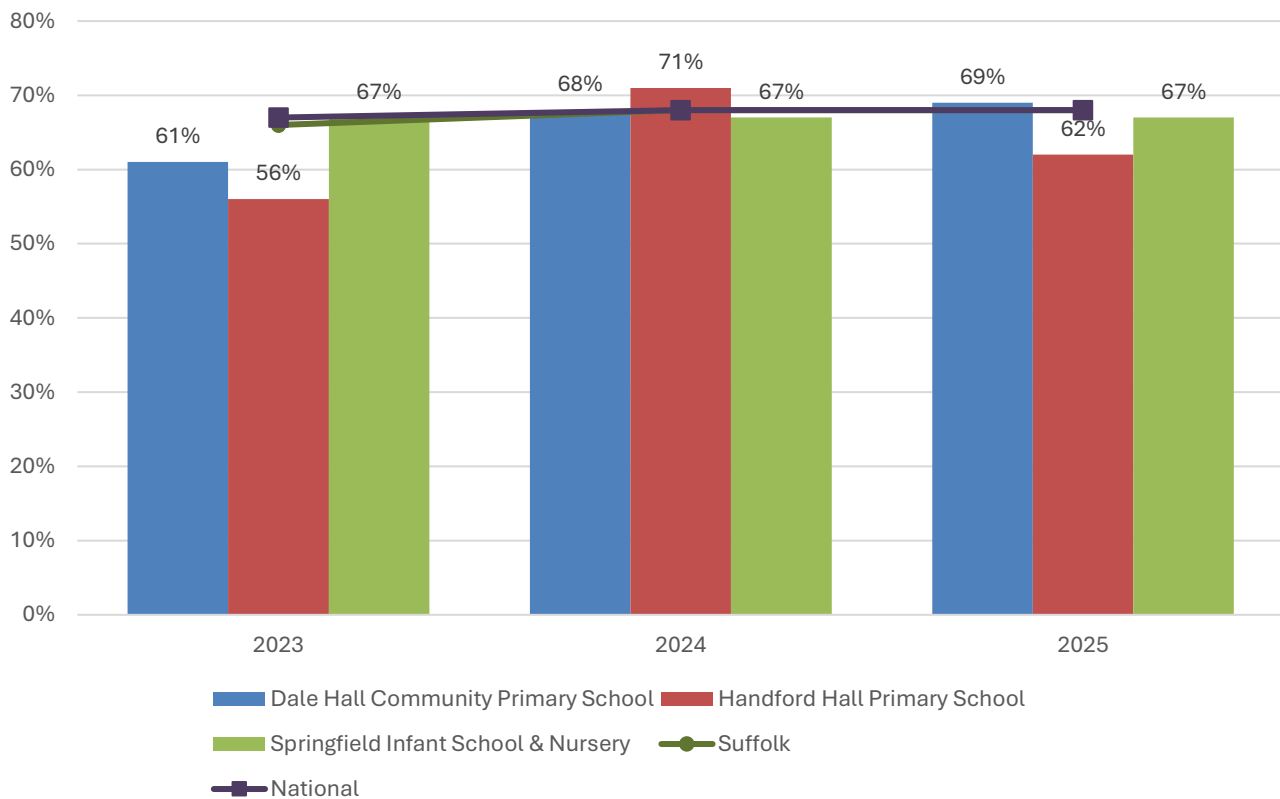
Name	Overall effectiveness	Effectiveness of leadership and management	Behaviour and attitudes	Personal development	Early years provision (if applicable)	Quality of education	Last inspection date
Dale Hall Community Primary School	2	2	9	9	2	9	04/03/2016
Handford Hall Primary School	2	2	2	1	2	2	19/01/2023
Springfield Infant School & Nursery	2	2	9	9	9	9	04/07/2013
Springfield Junior School	5	2	2	2	9	2	04/03/2025
Westbridge Academy	2	2	9	9	9	9	18/09/2013

Code	Judgement	Code	Judgement
0	Insufficient evidence	SM	Special measures
1	Outstanding	8	Does not apply
2	Good	9	No judgement
3	Requires improvement	Null	No data available
4	Inadequate	Not judged	Not judged
SWK	Serious weaknesses	5	No overall grade

School Attainment

Foundation Stage Profile (reception)

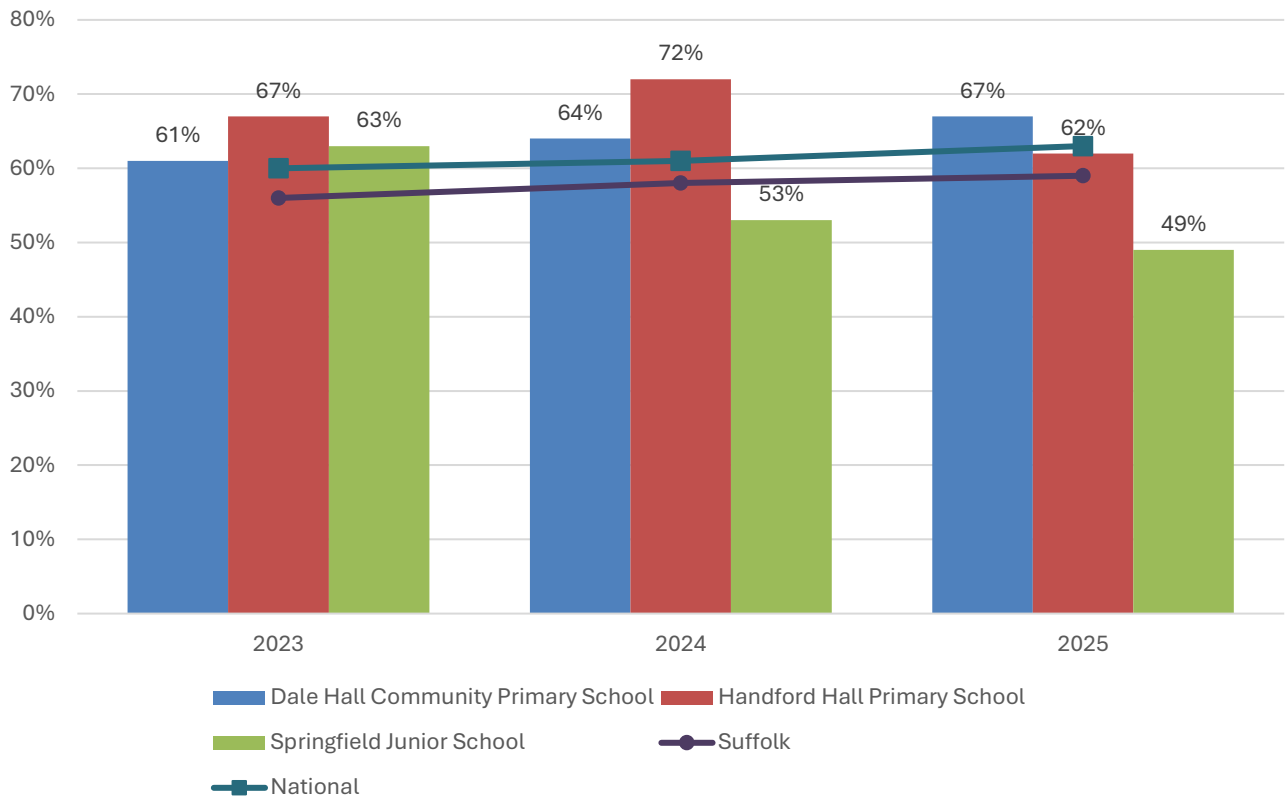
% pupils achieving Good Level of Development (GLD)



- In 2025, the percentage of pupils to achieve a Good Level of Development at Foundation Stage was 62% at Handford Hall Primary School, 67% at Springfield Infant School and Nursery, and 68% nationwide.
- Foundation Stage attainment at Springfield Infant School and Nursery has been consistent over the last three years at a level very similar to the national benchmark.
- Attainment has fluctuated at Handford Hall Primary School, being three percentage points above the national figure in 2024, but 13 and 6 percentage points below it in 2023 and 2025 respectively.
- At Dale Hall Community Primary School, attainment has increased during this period, and was one percentage point above the Suffolk and national figures in 2025.

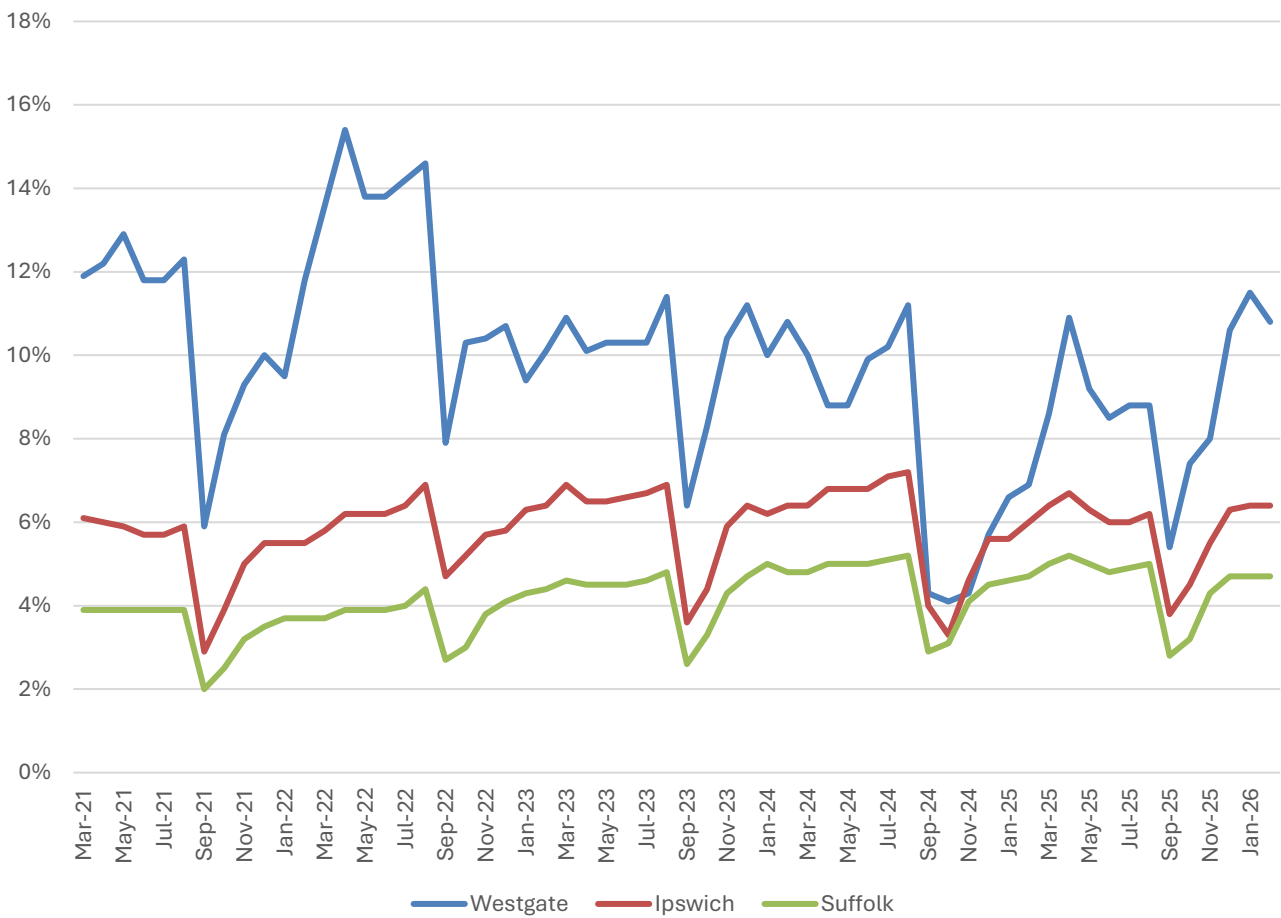
Key Stage 2 (age 11)

% pupils achieving the Expected Level or better in Reading, Writing and Mathematics



- In 2025, the percentage of pupils to achieve the expected level or better in reading, writing and mathematics at Key Stage 2 was 67% at Dale Hall Community Primary School, 62% at Handford Hall Primary School, 49% at Springfield Junior School, and 63% nationwide.
- KS2 attainment at Springfield Junior School was below the national benchmark in 2024 and 2025, and has fallen year on year/
- At Handford Hall Primary, KS2 attainment was well above the national level in 2023 and 2024, before dropping just a single percentage point below it in 2025.
- The percentage of pupils to achieve the expected level or better in reading, writing and mathematics at Dale Hall Community Primary School has been consistently above the county and national average over the past three years of data.

NEET % (Not in Education, Employment or Training)



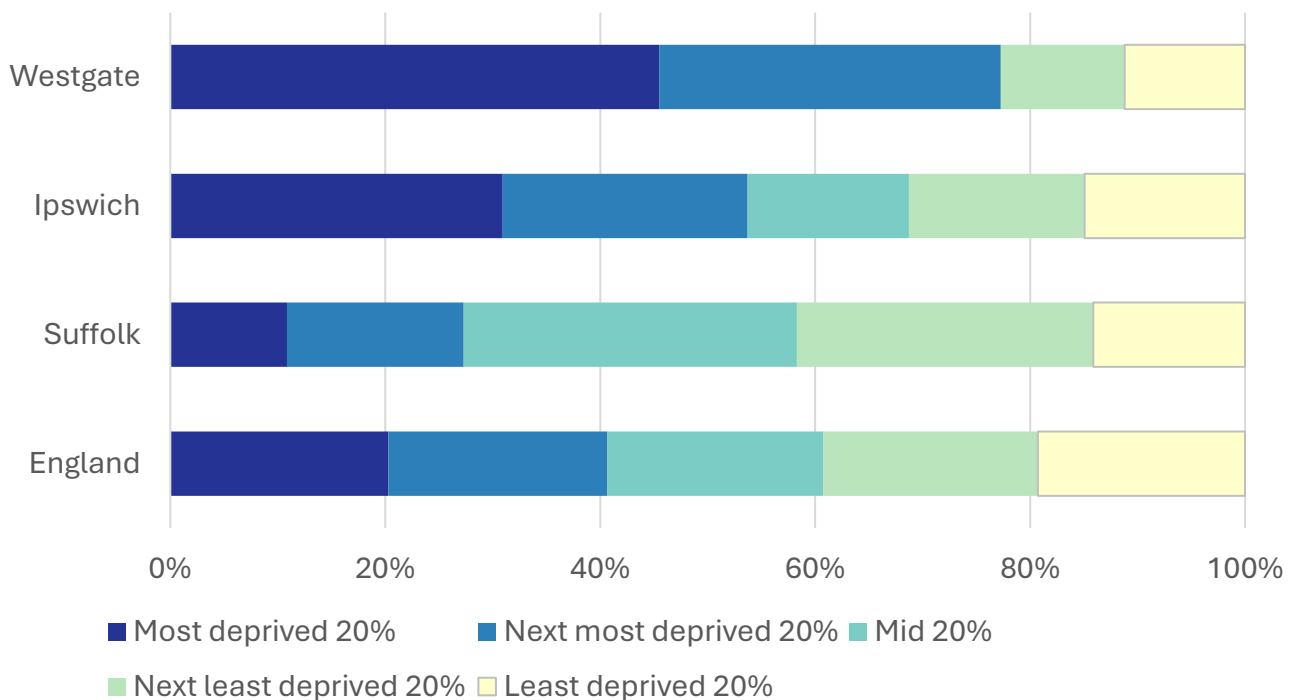
- In February 2026, 10.8% of 16-17-year-olds in Westgate were classified as NEET (not in education, employment or training).
- NEET levels fluctuate considerably according to the time of year and due to small numbers of 16-17-year-olds in the division, typically being at their lowest at the beginning of a new school year.
- In Westgate, the proportion of children who are NEET is almost invariably above the district and county figures.

Index of Multiple Deprivation (IMD) 2025 (see map overleaf)

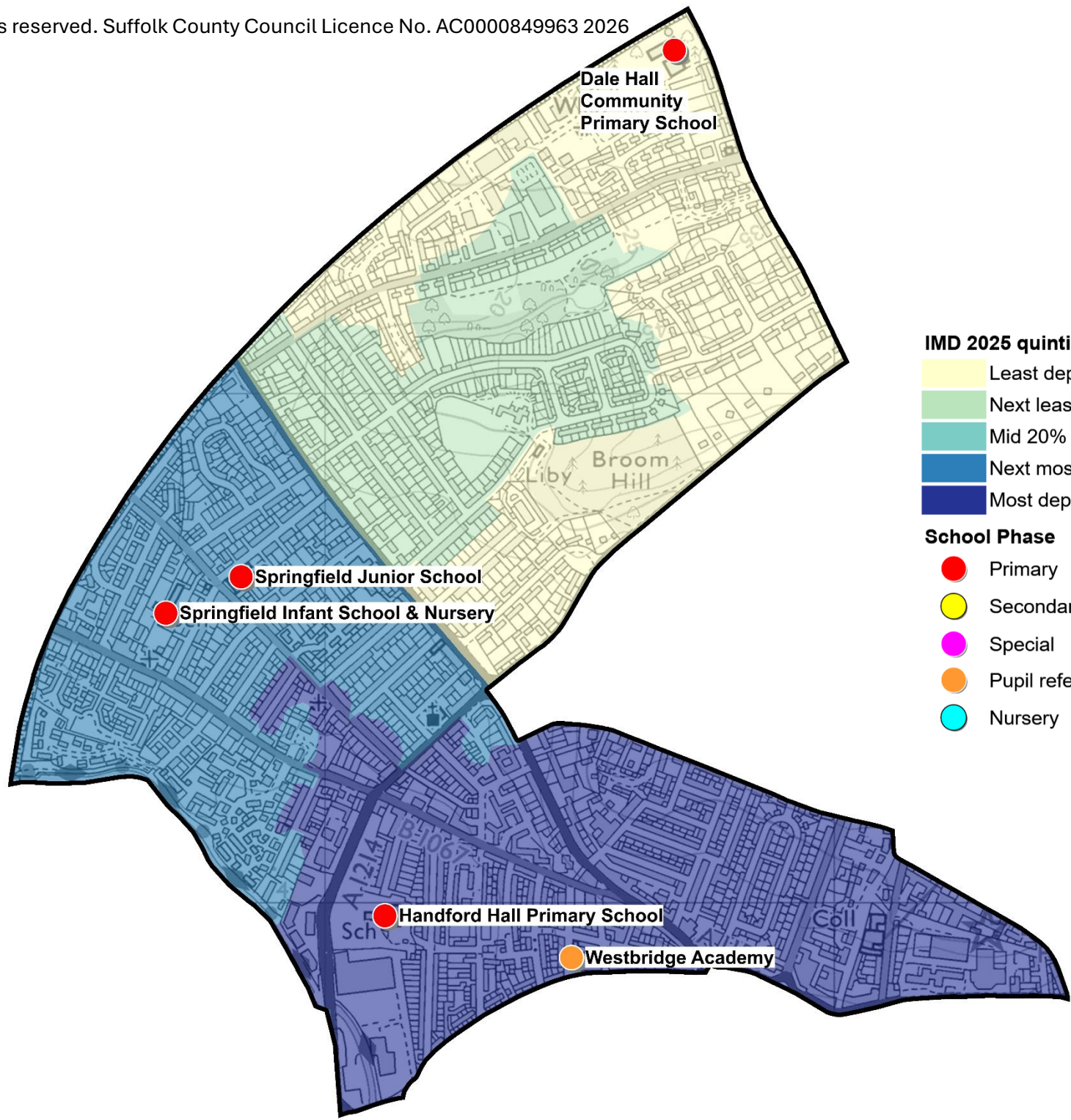
The IMD combines a number of indicators, chosen to cover a range of economic, social and housing issues, into a single deprivation score for each small area in England. This allows each area to be ranked relative to one another according to their level of deprivation. Small areas (Lower Super Output Areas, average population 1,700) are most commonly described as being in 1 of 5 quintile bands. The bottom quintile represents the 20% of areas that are the most deprived in England; these are shaded pale yellow on the map. The top quintile represents the least deprived areas in England and is shaded dark blue.

The Index is widely used to analyse patterns of deprivation, identify areas that would benefit from special initiatives or programmes and as a tool to determine eligibility for specific funding streams.

The chart below shows the percentage of the population of the division that live in areas ranked among each of the five quintiles of deprivation, alongside the district, county and England comparators.



- The 2025 IMD shows that deprivation levels in Westgate are relatively high but also varied, with parts of the division ranked in four of the five deprivation quintiles in England.
- Almost half (45%) of the population of the division live in areas that are ranked among the most deprived 20% of areas in England, with a further 32% in neighbourhoods among the second most deprived quintile.
- The remaining 23% of the division's population live in areas that are ranked among the least deprived 40% of places in England, with the split between the least deprived quintile and second least deprived being quite even.
- See the map overleaf for the distribution of IMD 2025 results across the division.



IMD 2025 quintile

- Least deprived 20%
- Next least deprived 20%
- Mid 20%
- Next most deprived 20%
- Most deprived 20%

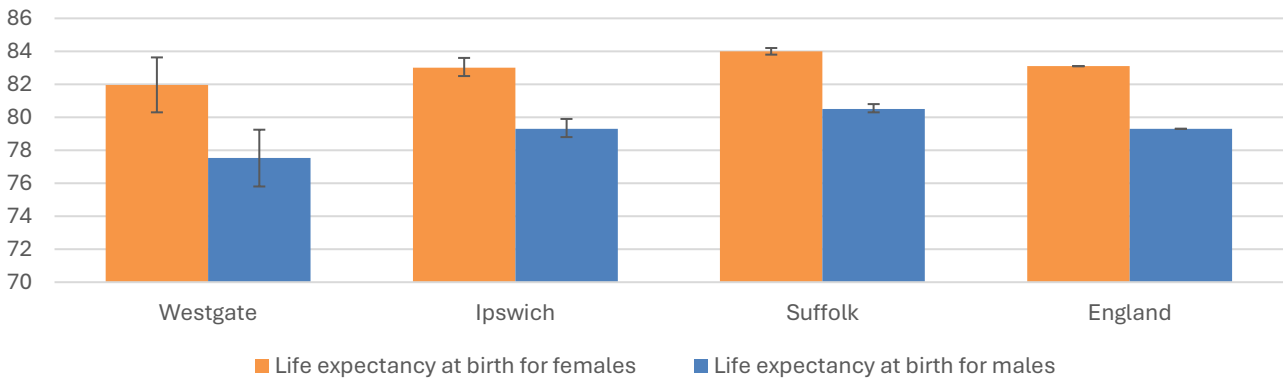
School Phase

- Primary
- Secondary
- Special
- Pupil referral unit/Alternative provision
- Nursery

Health

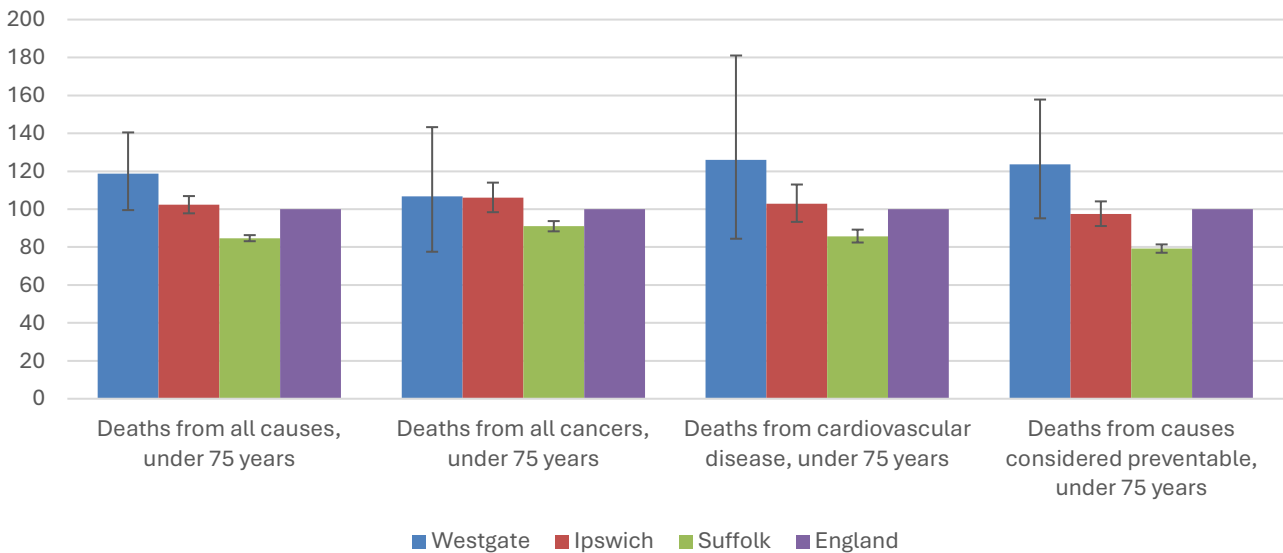
The local data used here is based on relatively small numbers. The confidence limits provide an indication of the reliability of the data. The 95% confidence intervals utilised on the chart provide a range within which there is 95% chance of the true result lying.

Life expectancy at birth



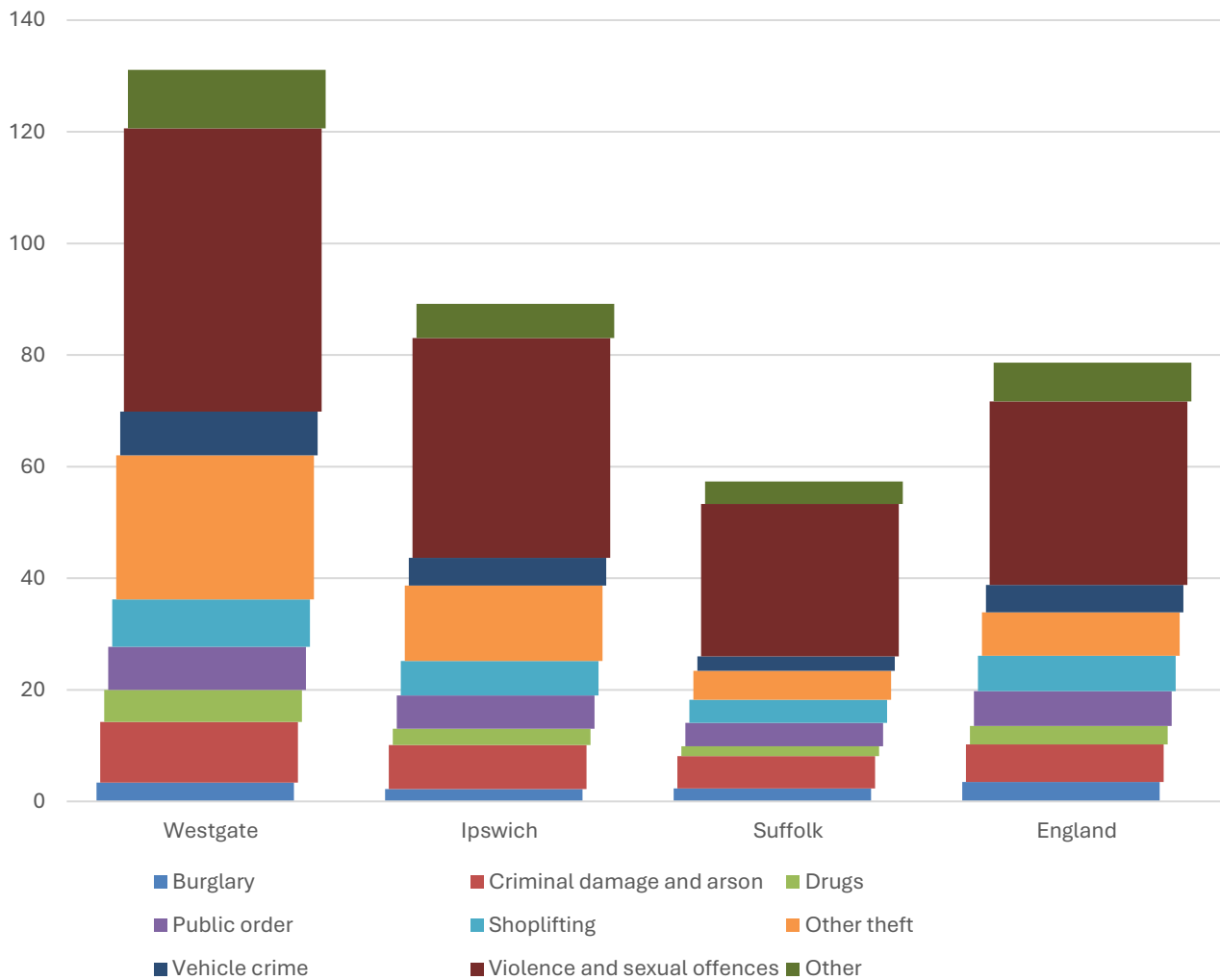
- The latest life expectancy at birth estimates for Westgate are 82 for females (the England figure is 83.1), and 77.5 for males (compared to 79.3 nationally).
- Life expectancy at birth for females is statistically similar to the England figure, while for males it is statistically significantly lower.

Deaths, under 75 years, standardised mortality ratio



- Estimated standardised mortality ratios for early deaths from all causes, cancers, cardiovascular disease and causes considered preventable in Westgate are above 100, indicating that deaths in under 75s due to these causes are higher than in England.
- Confidence intervals around these estimates are wide for local data, however, and early deaths from all of the causes shown here are statistically similar in the division to Ipswich, Suffolk, and England.
- The standardised mortality ratio data shown here means that for every 100 early deaths from all causes across England as a whole, there are an estimated 119 comparable deaths in Westgate.

Crime & Community Safety



- Crime levels in Westgate are high compared to both the county and Ipswich averages.
- In the year to the end of January 2026, there were 131 recorded crimes per 1,000 residents in the division, compared to 89 in Ipswich, and 57 countywide.
- All types of crime occur at a higher rate in the division than the district and county average.
- The most common type of crime recorded during this period was violence and sexual offences, which accounted for almost 40% of all recorded crimes in the division.
- Other theft incidents (26 per 1,000 population) were also much more frequently recorded in the division than in Ipswich (13.5 per 1,000 population) and in Suffolk (5.2 per 1,000 population).

Data sources

Category	Indicator	Source
Demographic Profile	Quinary population table 2024	ONS 2024 mid-year population estimates
	Population pyramid 2024	ONS 2024 mid-year population estimates
	Ethnicity 2021	ONS 2021 Census
Economy	Employment by broad industrial sector 2024	ONS Business Register and Employment Survey via NOMIS
Labour market	Claimant count: The number of people claiming Jobseeker's Allowance plus those who claim Universal Credit who are out of work (% 16-64 population) January 2021-February 2026	DWP via NOMIS
Education	School information and attainment 2023-2025	Suffolk County Council CYP iHub
	% 16-17-year-olds NEET (Not in Employment, Education or Training) March 2021 to February 2026	Suffolk County Council CYP iHub via the Suffolk Observatory
Deprivation	Index of Multiple Deprivation 2025	Ministry of Housing, Communities and Local Government
Health	Life expectancy at birth 2016-2020 (2018-2020 for comparator areas)	Office for Health Improvement and Disparities
Health	Standardised mortality ratio for deaths from all causes, cancer, cardiovascular disease, and from causes considered preventable (under 75 years), 2016-2020 (2019-2023 for comparator areas). The standardised mortality ratio is the ratio of observed deaths in the study group to expected deaths in the general population	Office for Health Improvement and Disparities
Community Safety	Recorded crime rate per 1,000 resident population February 2025 to January 2026	Data.police.uk via the Suffolk Observatory

For more data and information about Westgate Electoral Division, see the Suffolk Observatory www.suffolkobservatory.info

