

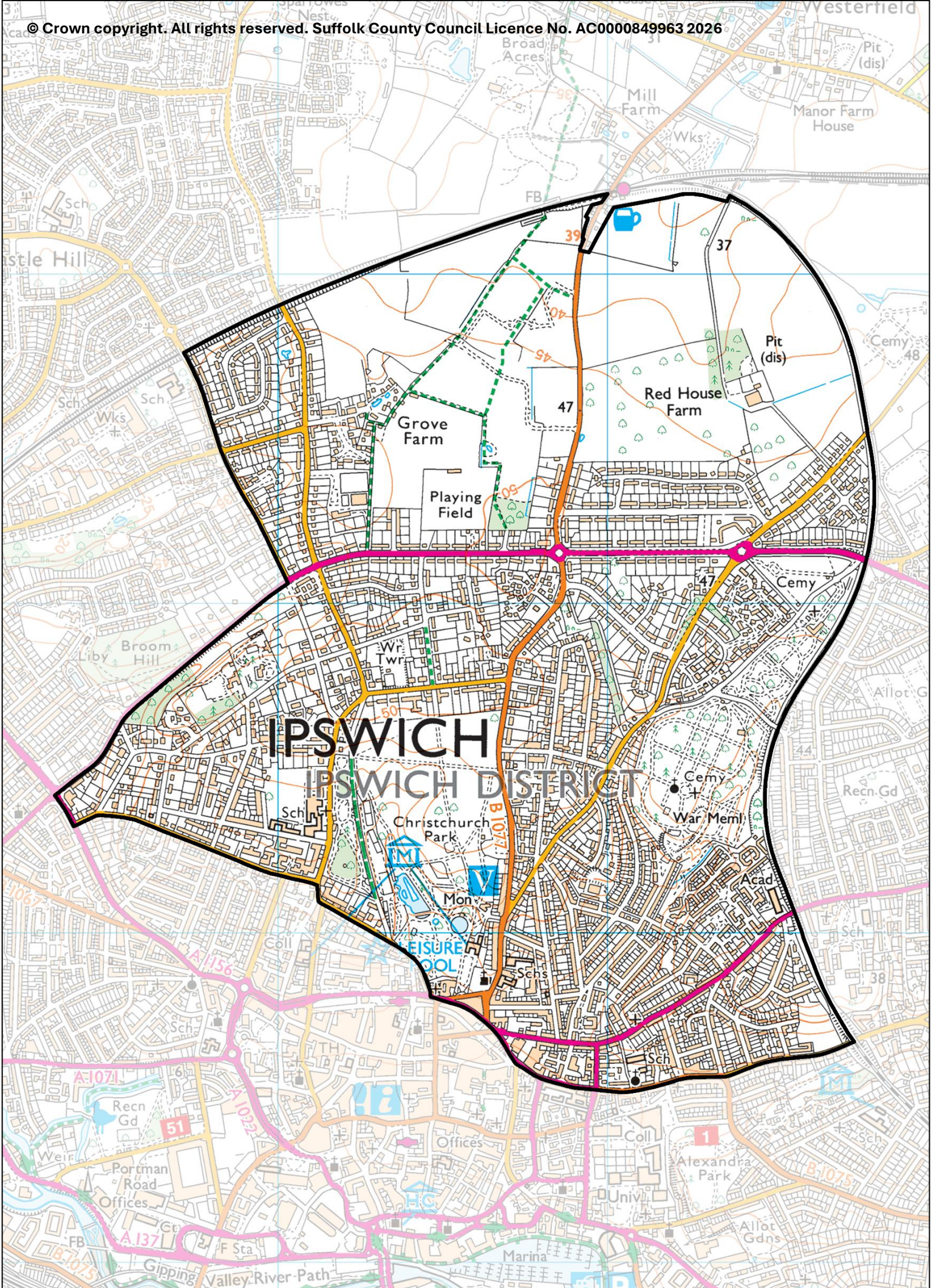
# St Margaret's

County Electoral Division profile

May 2026

This division comprises parts of Alexandra, Castle Hill, St Margaret's, and Westgate Wards





## **Contents**

- Demographic Profile: Age & Ethnicity
- Economy and Labour Market
- Schools & NEET
- Index of Multiple Deprivation
- Health
- Crime & Community Safety
- Additional Information
- Data Sources

# Electoral Division Profiles: an introduction

These profiles have been produced to support elected members, constituents and other interested parties in understanding the demographic, economic, social and educational profile of their neighbourhoods. We have used the latest data available at the time of publication.

Much more data is available from national and local sources than is captured here, but it is hoped that the profile will be a useful starting point for discussion, where local knowledge and experience can be used to flesh out and illuminate the information presented here.

The profile can be used to help look at some fundamental questions e.g.

- Does the age profile of the population match or differ from the national profile?
- Is there evidence of the ageing profile of the county in all the wards in the Division or just some?
- How diverse is the community in terms of ethnicity?
- What is the impact of deprivation on families and residents?
- Does there seem to be a link between deprivation and school performance?
- What is the breakdown of employment sectors in the area?
- Is it a relatively healthy area compared to the rest of the district or county?
- What sort of crime is prevalent in the community?

A vast amount of additional data is available on the **Suffolk Observatory**

[www.suffolkobservatory.info](http://www.suffolkobservatory.info)

The Suffolk Observatory is a free online resource that contains all Suffolk's vital statistics; it is the one-stop-shop for information and intelligence about Suffolk. Through data, reports and maps, the Suffolk Observatory provides a comprehensive picture of the County. It is a great source for useful facts and figures that can be used for writing reports and presentations, informing strategic and business planning, preparing funding applications or supporting academic research. Data is presented around the key themes of population, children and young people, health and social care, housing, crime and community safety, deprivation, economy and employment and environment. All areas of the county are covered, right down to district, electoral division, ward and parish level, with information easily accessible in a variety of formats. You can also build your own reports for custom areas.

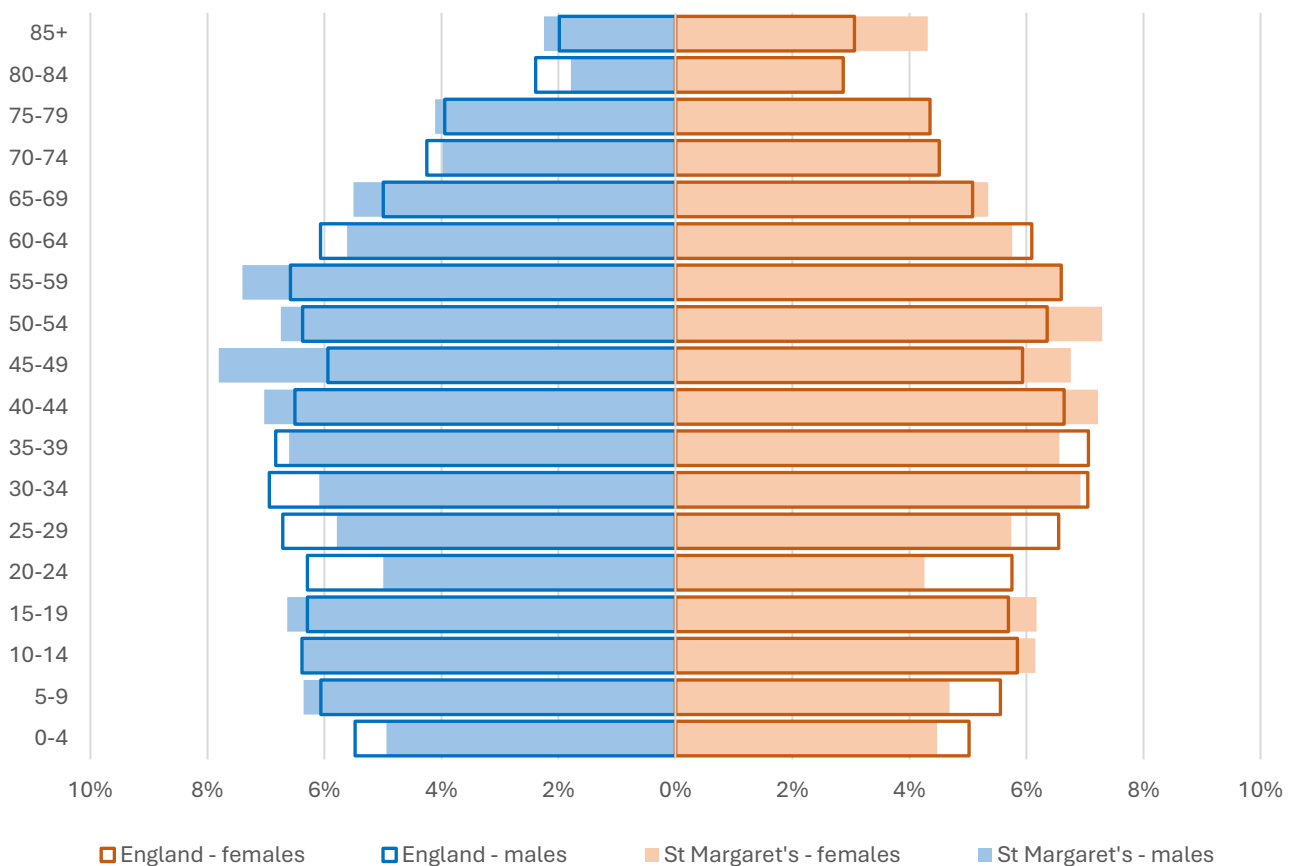
## Technical Notes:

1. Where electoral divisions do not exactly match the boundaries at which the data is available (e.g. ward, Output Area or Lower Super Output Area), we have adopted a "best-fit" approach to produce a dataset.
2. District, county and national level data is provided where possible to provide a context for comparisons.

# Demographic Profile - Age

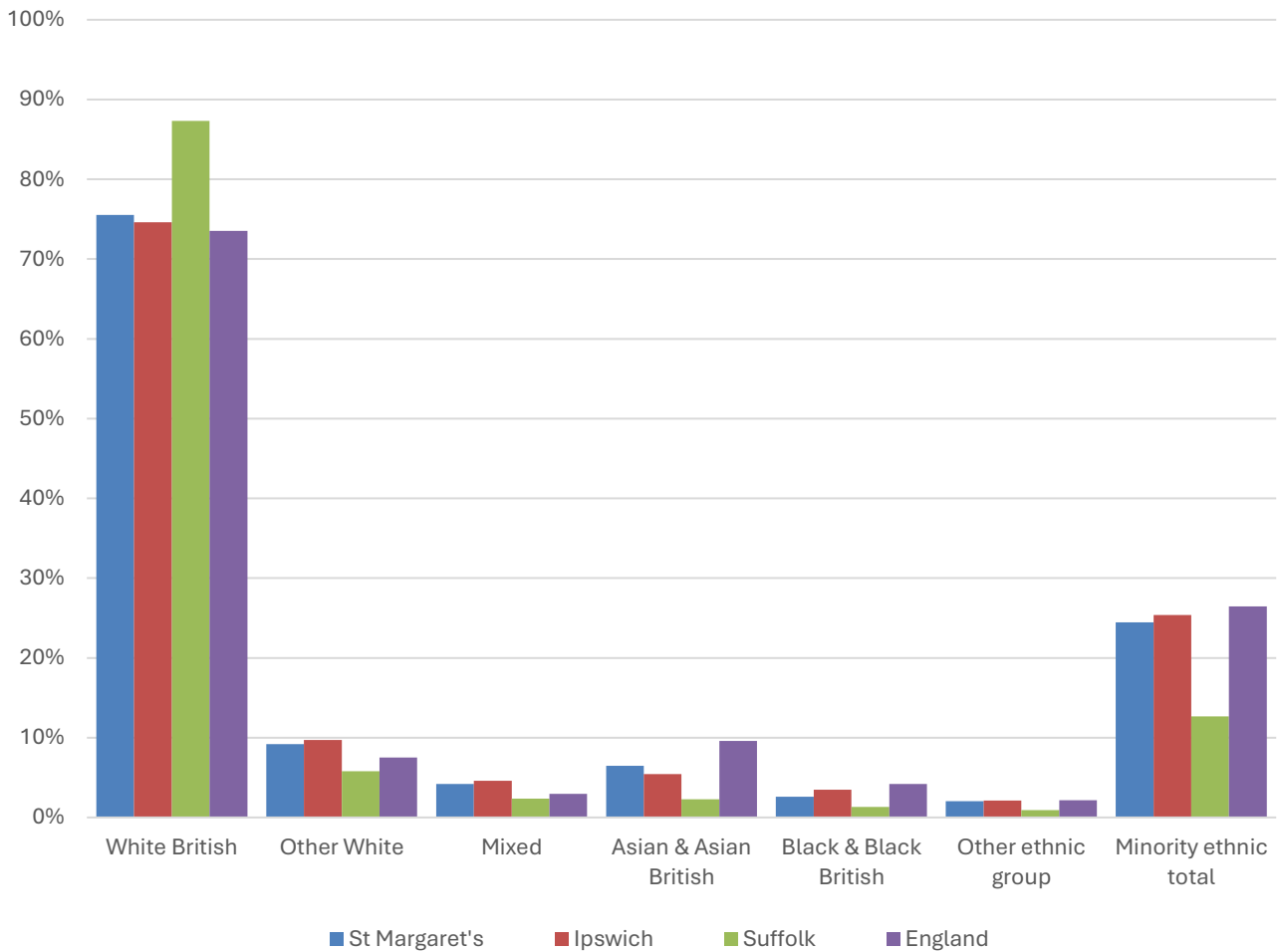
In mid-2024, the estimated population of St Margaret's stood at 11,241, an increase of 0.7% over the past decade. The age structure of the component wards and the division as a whole is set out below.

	St Margaret's Division	St Margaret's Ward	Alexandra Ward	Castle Hill Ward
<b>All Ages</b>	<b>11,241</b>	<b>7,796</b>	<b>2,833</b>	<b>612</b>
<b>0-4</b>	<b>529</b>	<b>316</b>	<b>194</b>	<b>19</b>
<b>5-9</b>	<b>621</b>	<b>415</b>	<b>171</b>	<b>35</b>
<b>10-14</b>	<b>705</b>	<b>515</b>	<b>165</b>	<b>25</b>
<b>15-19</b>	<b>720</b>	<b>511</b>	<b>182</b>	<b>27</b>
<b>20-24</b>	<b>520</b>	<b>296</b>	<b>195</b>	<b>29</b>
<b>25-29</b>	<b>648</b>	<b>398</b>	<b>226</b>	<b>24</b>
<b>30-34</b>	<b>731</b>	<b>435</b>	<b>273</b>	<b>23</b>
<b>35-39</b>	<b>740</b>	<b>470</b>	<b>231</b>	<b>39</b>
<b>40-44</b>	<b>801</b>	<b>554</b>	<b>220</b>	<b>27</b>
<b>45-49</b>	<b>819</b>	<b>574</b>	<b>220</b>	<b>25</b>
<b>50-54</b>	<b>789</b>	<b>568</b>	<b>182</b>	<b>39</b>
<b>55-59</b>	<b>787</b>	<b>540</b>	<b>204</b>	<b>43</b>
<b>60-64</b>	<b>639</b>	<b>471</b>	<b>111</b>	<b>57</b>
<b>65-69</b>	<b>610</b>	<b>457</b>	<b>103</b>	<b>50</b>
<b>70-74</b>	<b>478</b>	<b>374</b>	<b>64</b>	<b>40</b>
<b>75-79</b>	<b>474</b>	<b>381</b>	<b>42</b>	<b>51</b>
<b>80-84</b>	<b>262</b>	<b>209</b>	<b>32</b>	<b>21</b>
<b>85+</b>	<b>368</b>	<b>312</b>	<b>18</b>	<b>38</b>



- The age pyramid for St Margaret's division is broadly similar to that of England as a whole.
- Younger adults, particularly aged 20-29, make up a smaller-than-average proportion of the population in the division.
- The most common age group in the division is 45-49-year-olds (7.3% of the local population), followed by 40-44-year-olds (7.1%), and 50-54-year-olds (7%).
- Just under a fifth (19.5%) of the population of St Margaret's is of retirement age, slightly above the England average.

# Demographic Profile - Ethnicity

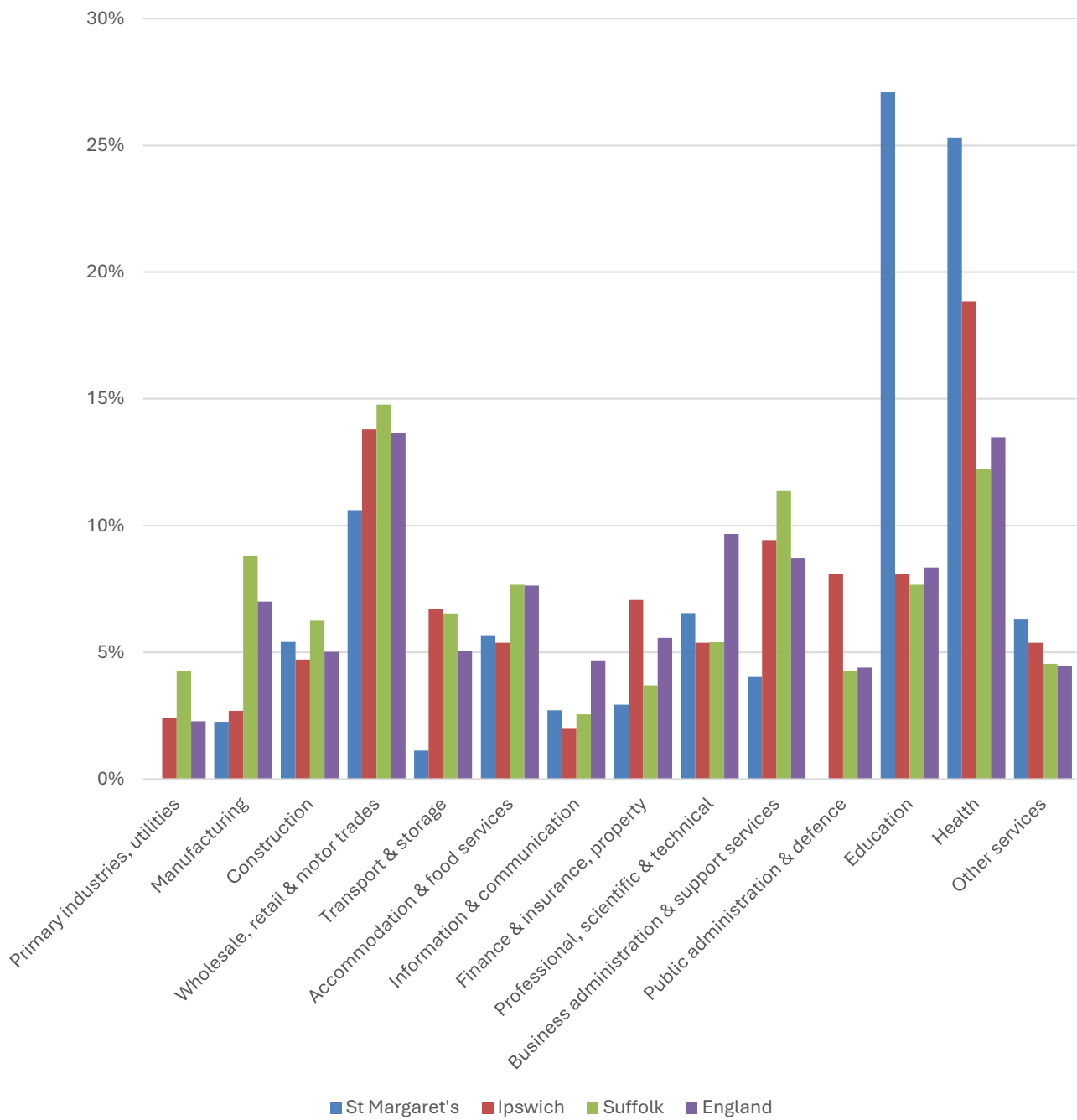


- According to the latest data (2021 Census), 75.5% of the population of St Margaret's is White British.
- There were 2,775 (24.5%) residents from minority ethnic groups in the division, almost double the proportion in Suffolk overall, and nine tenths of the England average.
- St Margaret's has a similar ethnic diversity profile to Ipswich Borough.

	All people	White British		Other White		Mixed		Asian and Asian British		Black and Black British		Other Ethnic Group		Total minority ethnic population	
	Count	Count	%	Count	%	Count	%	Count	%	Count	%	Count	%	Count	%
St Margaret's	11,336	8,561	75.5	1,041	9.2	477	4.2	735	6.5	293	2.6	229	2.0	2,775	24.5
Ipswich	139,643	104,208	74.6	13,549	9.7	6,409	4.6	7,611	5.5	4,882	3.5	2,984	2.1	35,435	25.4
Suffolk	760,687	664,205	87.3	44,066	5.8	17,807	2.3	17,483	2.3	10,168	1.3	6,958	0.9	96,482	12.7
England			73.5		7.5		3.0		9.6		4.2		2.2		26.5

# Economy

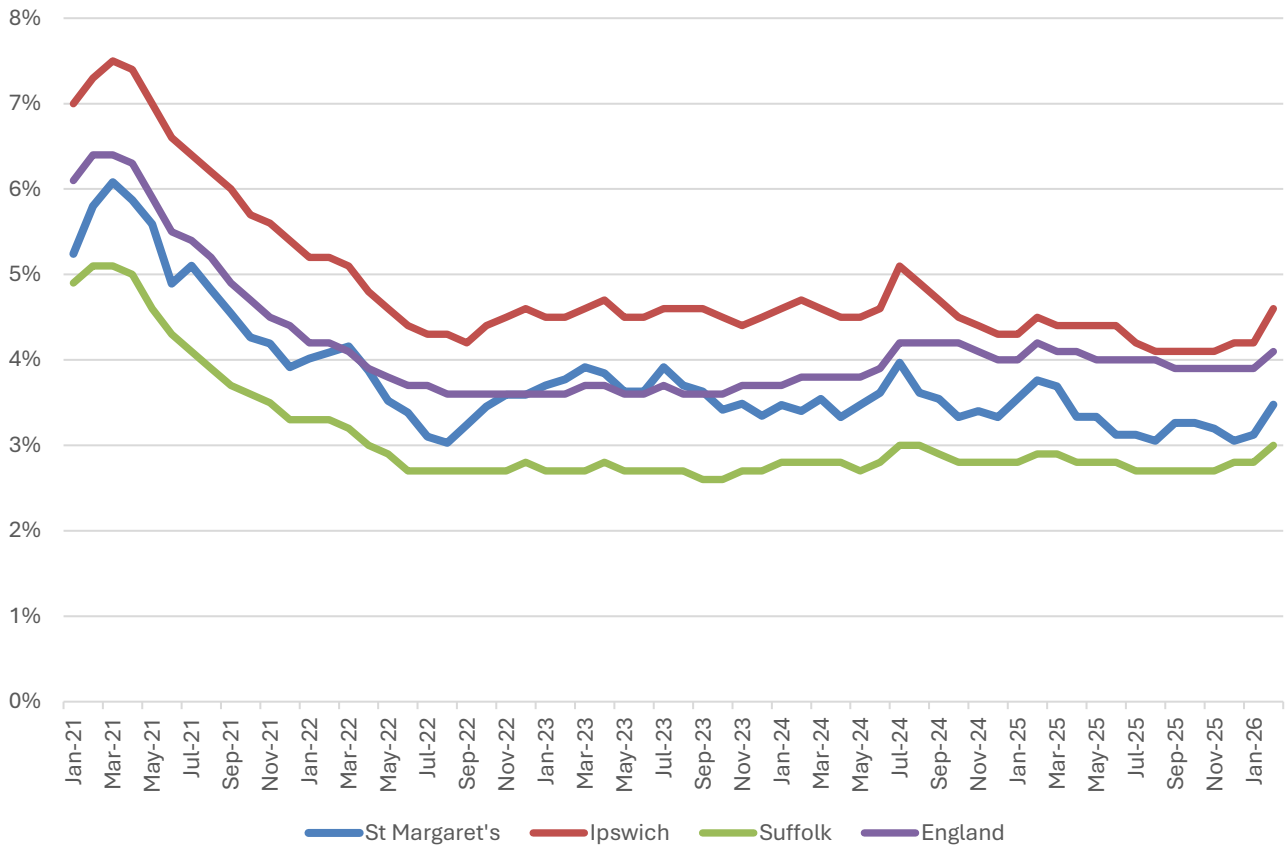
There are around 2,200 people employed in St Margaret's.



- Education and health are the two most important sectors in St Margaret's. In total, they account for more than half of the jobs in the division.

# Labour Market

## Out-of-work benefit claimant rate



- In common with Ipswich, Suffolk and England as a whole, St Margaret's saw a steady decline in the proportion of the working age population claiming out-of-work benefits during 2021 and into 2022 following a peak during the COVID-19 pandemic.
- Since then, the claimant rate has been fairly stable between 3% and 4%.
- In February 2026 (the latest available data), 3.5% of 16-64-year-olds were claiming out-of-work benefits in the division.
- The claimant rate in the division is consistently higher than the county figure and below that of Ipswich Borough.

# Schools

## School Information

### Schools in the Division

Name	Phase	Academy Status	No. pupils	Average cohort size at:			
				Foundation Stage (age 4-7)	KS2 (age 7-11)	KS4 (age 14-16)	KS5 (age 16-18)
St Helen's Primary School	Primary	AC	439	59	58		
St Margaret's CEVAP School, Ipswich	Primary	LA	413	57	58		
Woodbridge Road Academy	Special	F	89		4	6	

Academy Status key: AS = Academy Sponsored, AC = Academy Converter, LA = LA Maintained, F = Free

### Ofsted information

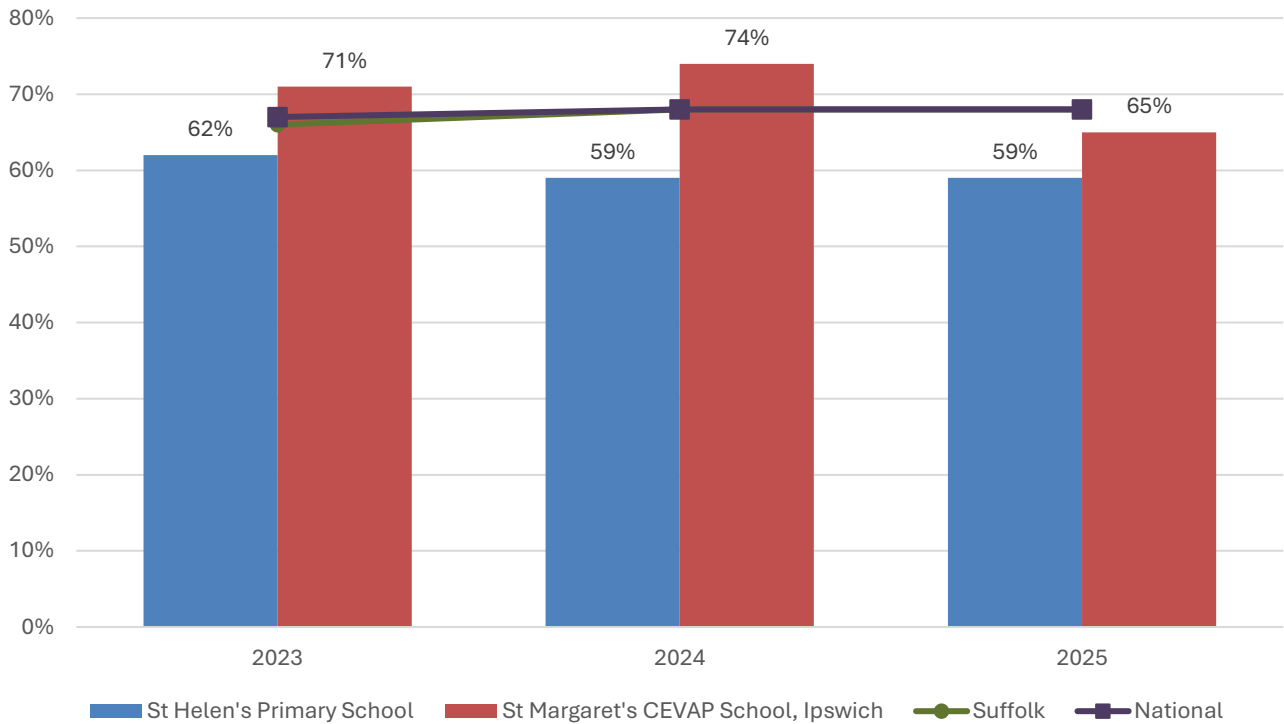
Name	Overall effectiveness	Effectiveness of leadership and management	Behaviour and attitudes	Personal development	Early years provision (if applicable)	Quality of education	Last inspection date
St Helen's Primary School	2	2	9	9	8	9	14/03/2012
St Margaret's CEVAP School, Ipswich	2	2	9	9	2	9	23/10/2014
Woodbridge Road Academy	5	1	1	1	9	2	03/06/2025

Code	Judgement	Code	Judgement
0	Insufficient evidence	SM	Special measures
1	Outstanding	8	Does not apply
2	Good	9	No judgement
3	Requires improvement	Null	No data available
4	Inadequate	Not judged	Not judged
SWK	Serious weaknesses	5	No overall grade

# School Attainment

## Foundation Stage Profile (reception)

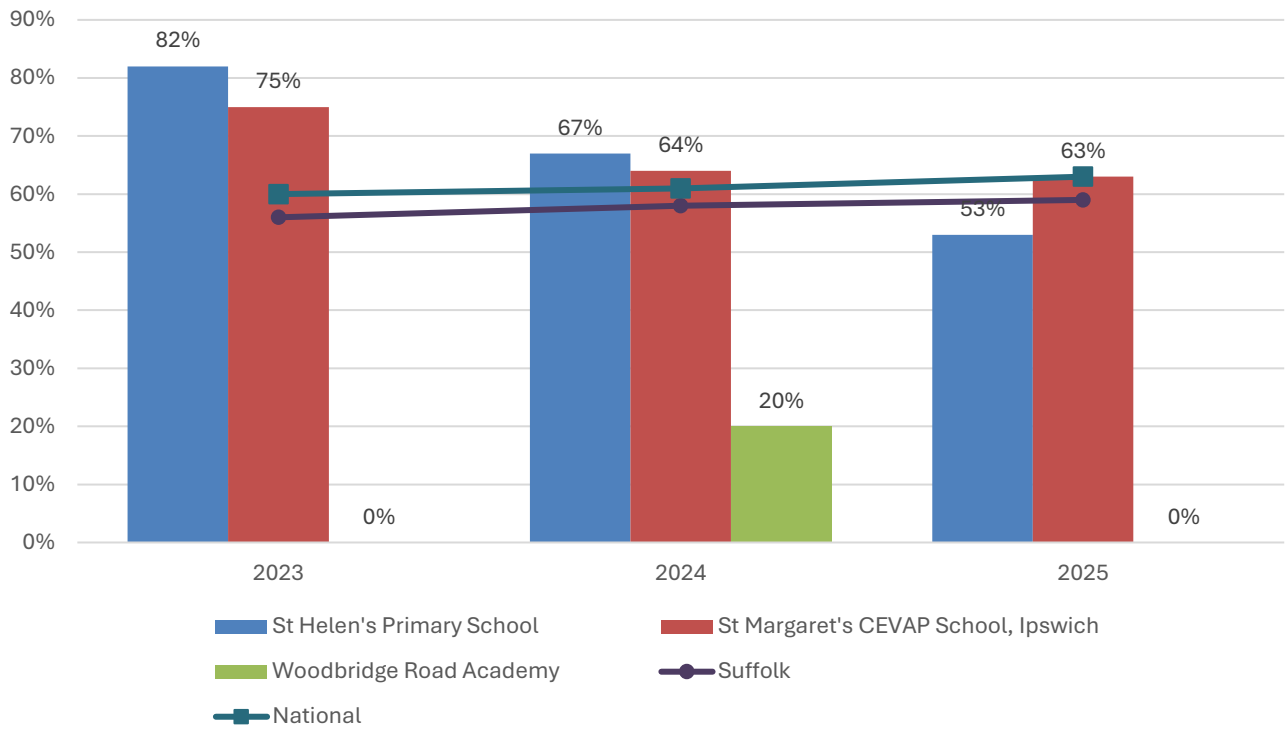
% pupils achieving Good Level of Development (GLD)



- In 2025, 59% at St Helen's Primary School and 65% at St Margaret's CEVAP School achieved a Good Level of Development at Foundation Stage. The national figure for the same year was 68%.
- Foundation Stage attainment at St Helen's Primary School has been consistently below the Suffolk and national average in each of the last three years of available data.
- Attainment was above average at St Margaret's CEVAP School in 2023 and 2024, before falling three percentage points below the national benchmark in 2025.

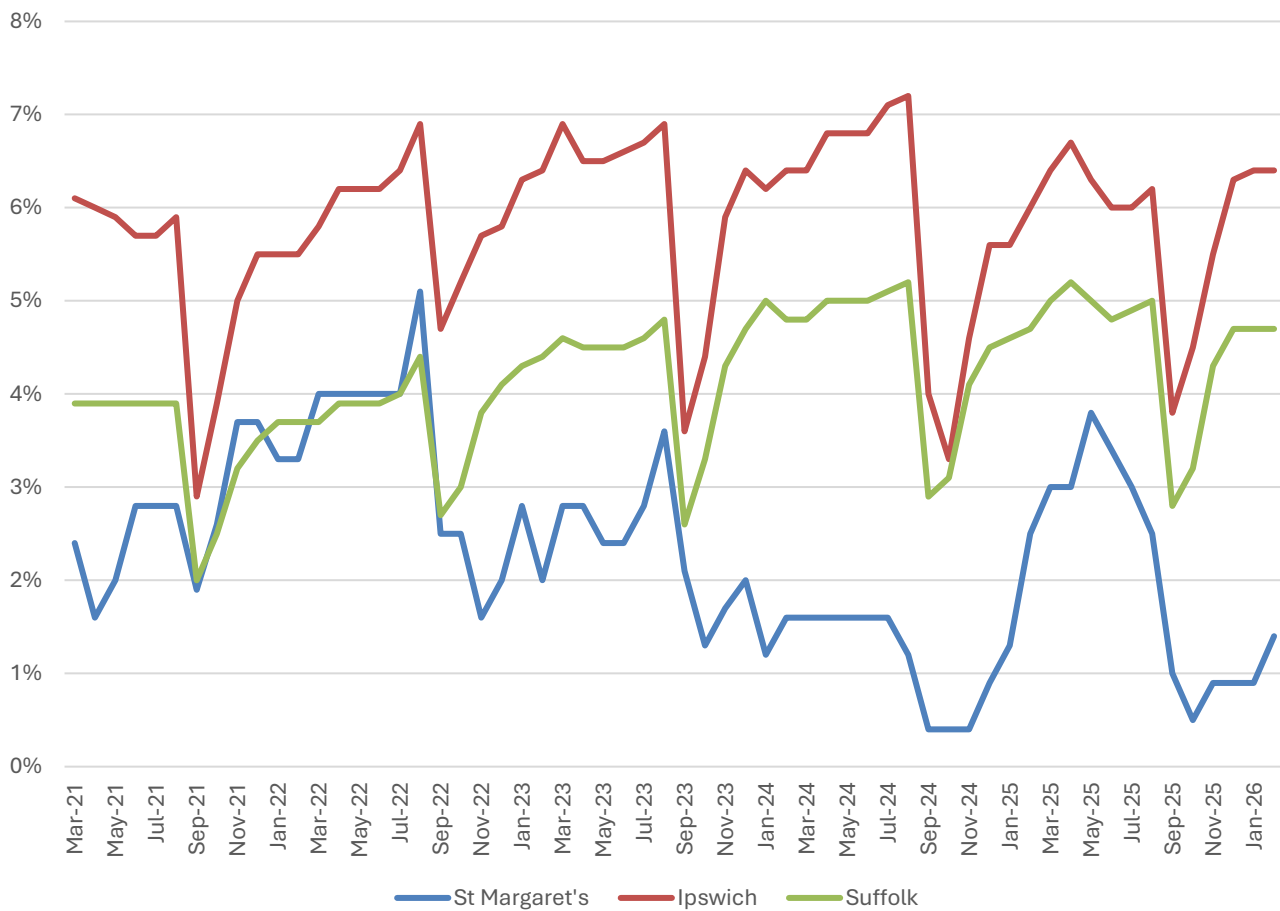
## Key Stage 2 (age 11)

% pupils achieving the Expected Level or better in Reading, Writing and Mathematics



- Key stage 2 attainment at both mainstream schools in the division was above the national benchmark in 2023 and 2024.
- KS2 attainment at St Helen's Primary School has fallen over the last three years, and dropped below the national figure in 2025.

## NEET % (Not in Education, Employment or Training)



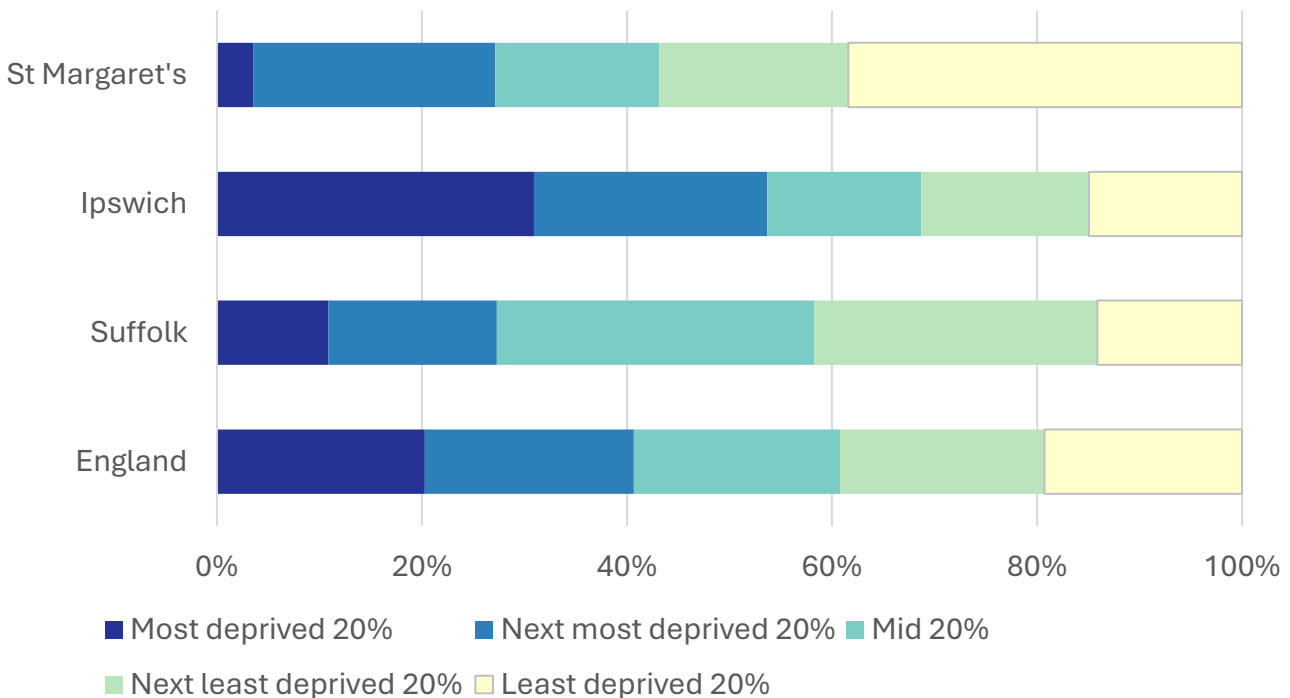
- In February 2026, 1.4% of 16-17-year-olds in St Margaret's were classified as NEET (not in education, employment or training).
- NEET levels fluctuate considerably according to the time of year and due to small numbers of 16-17-year-olds in the division, typically being at their lowest at the beginning of a new school year.
- In St Margaret's, the proportion of children who are NEET is consistently below the Ipswich Borough figure, and has also been below the county average since the beginning of the 2022/23 school year.

## Index of Multiple Deprivation (IMD) 2025 (see map overleaf)

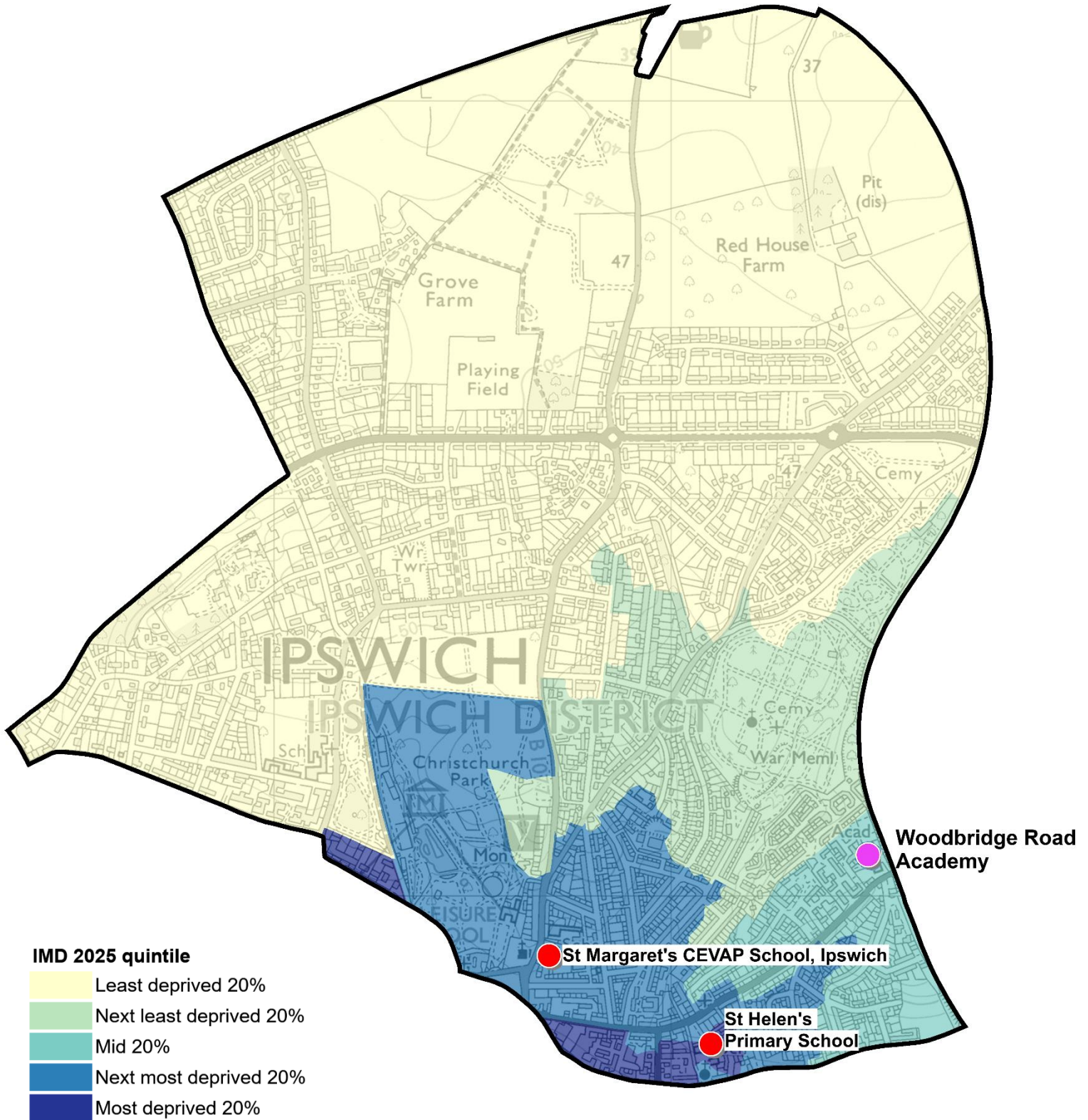
The IMD combines a number of indicators, chosen to cover a range of economic, social and housing issues, into a single deprivation score for each small area in England. This allows each area to be ranked relative to one another according to their level of deprivation. Small areas (Lower Super Output Areas, average population 1,700) are most commonly described as being in 1 of 5 quintile bands. The bottom quintile represents the 20% of areas that are the most deprived in England; these are shaded pale yellow on the map. The top quintile represents the least deprived areas in England and is shaded dark blue.

The Index is widely used to analyse patterns of deprivation, identify areas that would benefit from special initiatives or programmes and as a tool to determine eligibility for specific funding streams.

The chart below shows the percentage of the population of the division that live in areas ranked among each of the five quintiles of deprivation, alongside the district, county and England comparators.



- Deprivation levels in St Margaret's are extremely varied, with all five of the quintiles of deprivation represented in the division. Overall, however, the division is less deprived than the Borough average.
- Just over a third (38%) of the population of the division live in areas that are ranked among the least deprived 20% of areas in England, with a further 18% in the second least deprived quintile.
- Just under 30% of St Margaret's residents live in neighbourhoods in the most deprived two quintiles (with the majority in the second most deprived quintile), with the remaining 16% of the division ranked in the middle quintile.
- See the map overleaf for the distribution of IMD 2025 results across the division.



**IMD 2025 quintile**

- Least deprived 20%
- Next least deprived 20%
- Mid 20%
- Next most deprived 20%
- Most deprived 20%

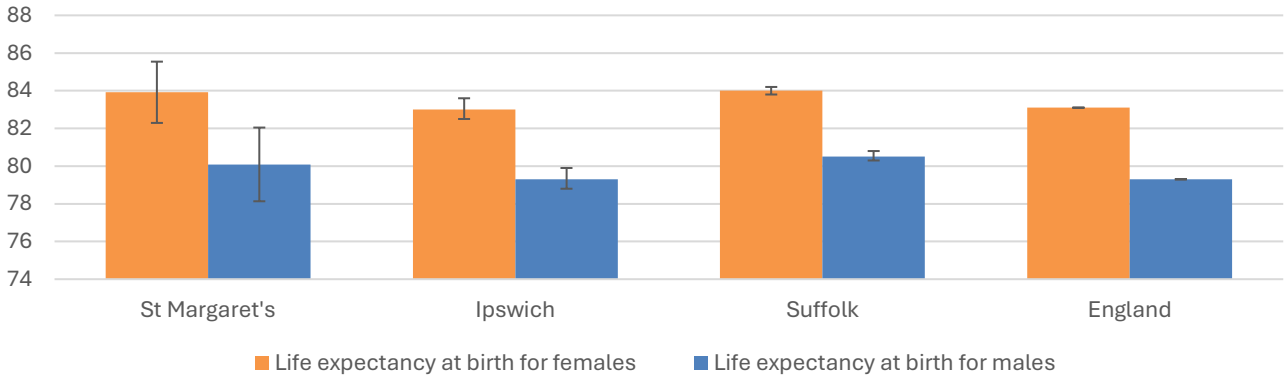
**School Phase**

- Primary
- Secondary
- Special
- Pupil referral unit/Alternative provision
- Nursery

# Health

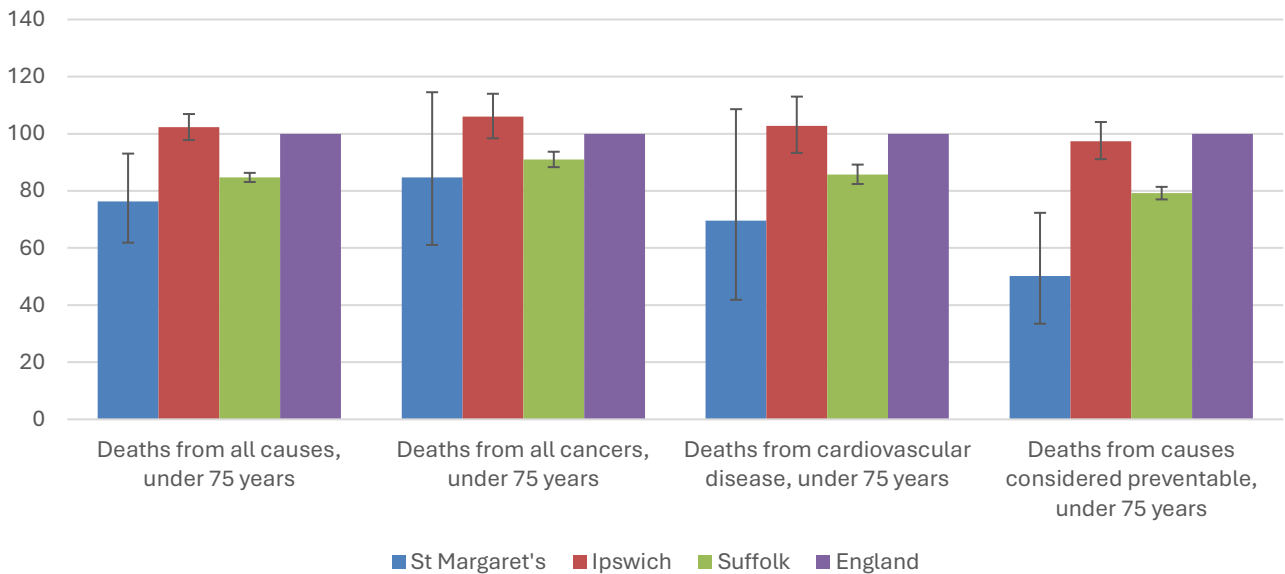
The local data used here is based on relatively small numbers. The confidence limits provide an indication of the reliability of the data. The 95% confidence intervals utilised on the chart provide a range within which there is 95% chance of the true result lying.

## Life expectancy at birth



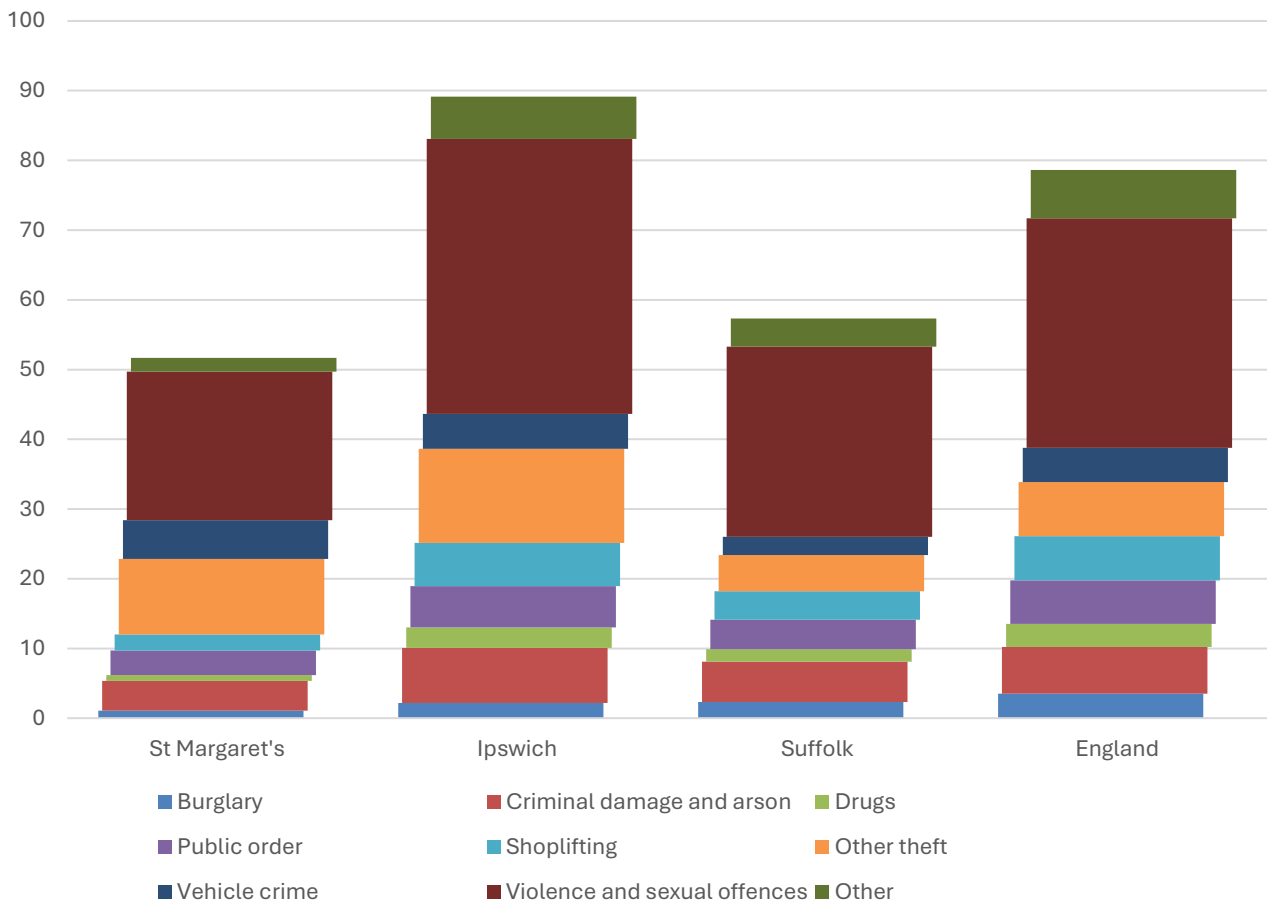
- The latest life expectancy at birth estimates for St Margaret's are 83.9 for females (the England figure is 83.1), and 80.1 for males (compared to 79.3 nationally).
- Life expectancy for both males and females in the division are statistically similar to the England figures.

## Deaths, under 75 years, standardised mortality ratio



- Estimated standardised mortality ratios for early deaths from all causes, all cancers, cardiovascular disease and causes considered preventable in St Margaret's are below 100, indicating that deaths in under 75s due to these causes are lower than in England.
- Confidence intervals around these estimates are wide for local data, but the SMRs for deaths from all causes and from causes considered preventable are statistically significantly lower than England.
- The standardised mortality ratio data shown here means that for every 100 early deaths from all causes across England as a whole, there are an estimated 76 comparable deaths in St Margaret's.

## Crime & Community Safety



- Crime levels in St Margaret's are similar to the county average but much lower than the Ipswich Borough rate.
- In the year to the end of January 2026, there were 52 recorded crimes per 1,000 residents in the division, compared to 89 in Ipswich, and 57 countywide.
- The most common type of crime recorded during this period was violence and sexual offences, which accounted for more than a third of all recorded crimes in the division.
- The rate of other theft incidents in the division was much higher than the county average and closer to the Ipswich figure.

## Data sources

Category	Indicator	Source
Demographic Profile	Quinary population table 2024	ONS 2024 mid-year population estimates
	Population pyramid 2024	ONS 2024 mid-year population estimates
	Ethnicity 2021	ONS 2021 Census
Economy	Employment by broad industrial sector 2024	ONS Business Register and Employment Survey via NOMIS
Labour market	Claimant count: The number of people claiming Jobseeker's Allowance plus those who claim Universal Credit who are out of work (% 16-64 population) January 2021-February 2026	DWP via NOMIS
Education	School information and attainment 2023-2025	Suffolk County Council CYP iHub
	% 16-17-year-olds NEET (Not in Employment, Education or Training) March 2021 to February 2026	Suffolk County Council CYP iHub via the Suffolk Observatory
Deprivation	Index of Multiple Deprivation 2025	Ministry of Housing, Communities and Local Government
Health	Life expectancy at birth 2016-2020 (2018-2020 for comparator areas)	Office for Health Improvement and Disparities
Health	Standardised mortality ratio for deaths from all causes, cancer, cardiovascular disease, and from causes considered preventable (under 75 years), 2016-2020 (2019-2023 for comparator areas). The standardised mortality ratio is the ratio of observed deaths in the study group to expected deaths in the general population	Office for Health Improvement and Disparities
Community Safety	Recorded crime rate per 1,000 resident population February 2025 to January 2026	Data.police.uk via the Suffolk Observatory

For more data and information about St Margaret's Electoral Division, see the Suffolk Observatory [www.suffolkobservatory.info](http://www.suffolkobservatory.info)

