

St Clement's

County Electoral Division profile

May 2026

This division comprises parts of Alexandra, Holywells, and St John's Wards



Contents

- Demographic Profile: Age & Ethnicity
- Economy and Labour Market
- Schools & NEET
- Index of Multiple Deprivation
- Health
- Crime & Community Safety
- Additional Information
- Data Sources

Electoral Division Profiles: an introduction

These profiles have been produced to support elected members, constituents and other interested parties in understanding the demographic, economic, social and educational profile of their neighbourhoods. We have used the latest data available at the time of publication.

Much more data is available from national and local sources than is captured here, but it is hoped that the profile will be a useful starting point for discussion, where local knowledge and experience can be used to flesh out and illuminate the information presented here.

The profile can be used to help look at some fundamental questions e.g.

- Does the age profile of the population match or differ from the national profile?
- Is there evidence of the ageing profile of the county in all the wards in the Division or just some?
- How diverse is the community in terms of ethnicity?
- What is the impact of deprivation on families and residents?
- Does there seem to be a link between deprivation and school performance?
- What is the breakdown of employment sectors in the area?
- Is it a relatively healthy area compared to the rest of the district or county?
- What sort of crime is prevalent in the community?

A vast amount of additional data is available on the **Suffolk Observatory**

www.suffolkobservatory.info

The Suffolk Observatory is a free online resource that contains all Suffolk's vital statistics; it is the one-stop-shop for information and intelligence about Suffolk. Through data, reports and maps, the Suffolk Observatory provides a comprehensive picture of the County. It is a great source for useful facts and figures that can be used for writing reports and presentations, informing strategic and business planning, preparing funding applications or supporting academic research. Data is presented around the key themes of population, children and young people, health and social care, housing, crime and community safety, deprivation, economy and employment and environment. All areas of the county are covered, right down to district, electoral division, ward and parish level, with information easily accessible in a variety of formats. You can also build your own reports for custom areas.

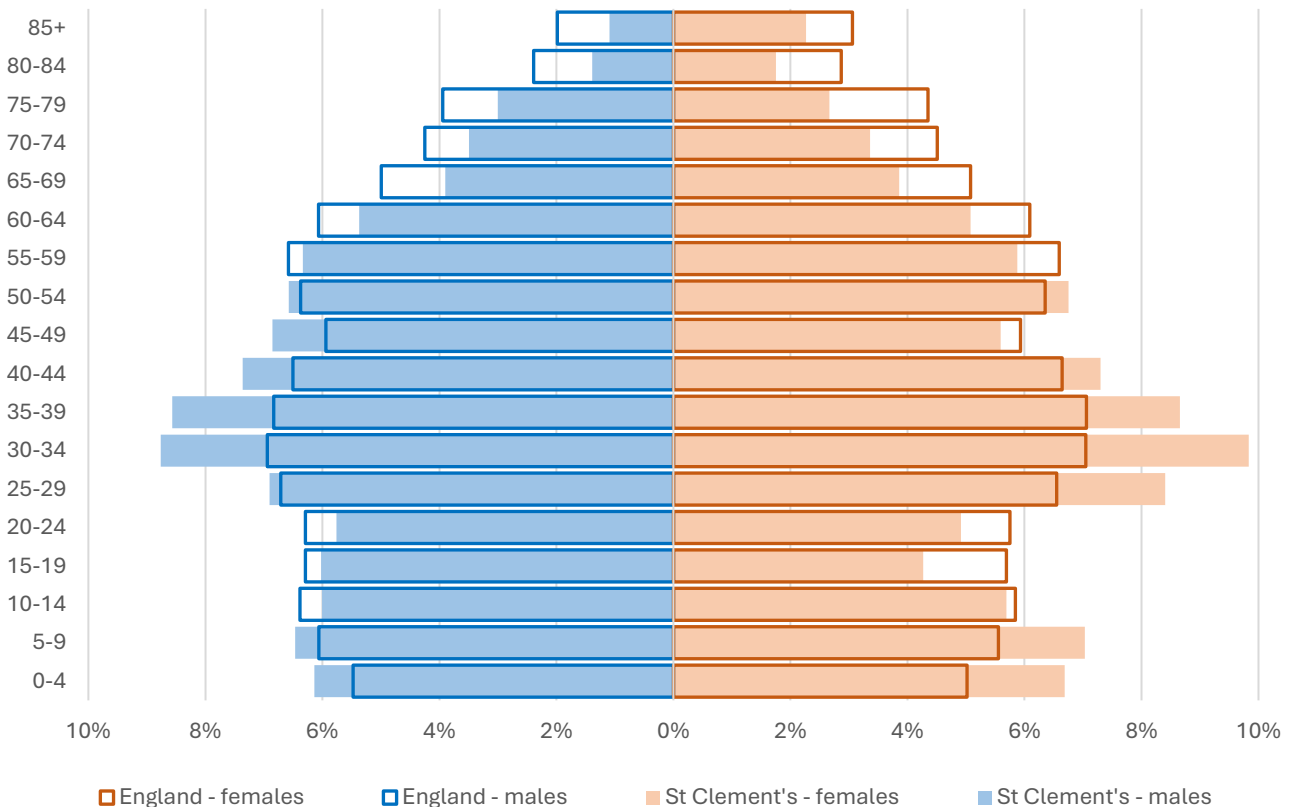
Technical Notes:

1. Where electoral divisions do not exactly match the boundaries at which the data is available (e.g. ward, Output Area or Lower Super Output Area), we have adopted a "best-fit" approach to produce a dataset.
2. District, county and national level data is provided where possible to provide a context for comparisons.

Demographic Profile - Age

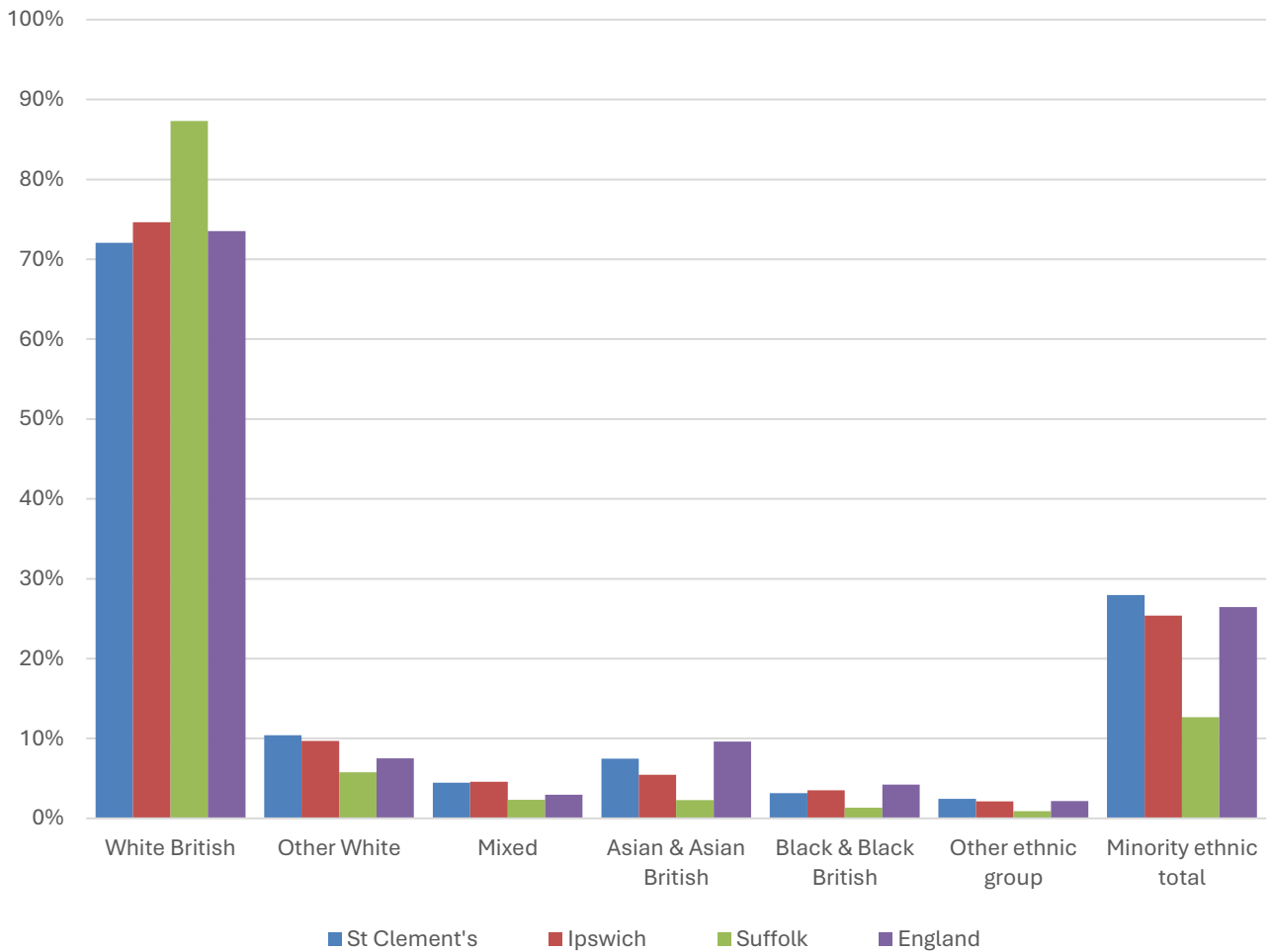
In mid-2024, the estimated population of St Clement's stood at 12,169, an increase of 4% over the past decade. The age structure of the component wards and the division as a whole is set out below.

	St Clement's Division	Alexandra Ward	Holywells Ward	St John's Ward
All Ages	12,169	5,045	3,750	3,374
0-4	780	344	244	192
5-9	821	334	269	218
10-14	712	284	208	220
15-19	627	273	190	164
20-24	650	319	176	155
25-29	931	414	330	187
30-34	1,131	482	381	268
35-39	1,048	414	330	304
40-44	892	403	232	257
45-49	758	326	241	191
50-54	811	337	264	210
55-59	743	310	236	197
60-64	636	234	220	182
65-69	472	203	120	149
70-74	417	162	120	135
75-79	345	132	92	121
80-84	191	43	54	94
85+	204	31	43	130



- The age pyramid for St Clement's division is younger than the England average. Retirement age people make up 13.4% of the local population, compared to 18.7% nationally.
- The most common age group in the division is 30-34-year-olds (9.3% of the local population), followed by 35-39-year-olds (8.6%), and 25-29-year-olds (7.7%). These age groups are clearly overrepresented in the division.
- Just under a quarter of the population of St Clement's is aged under 20.

Demographic Profile - Ethnicity

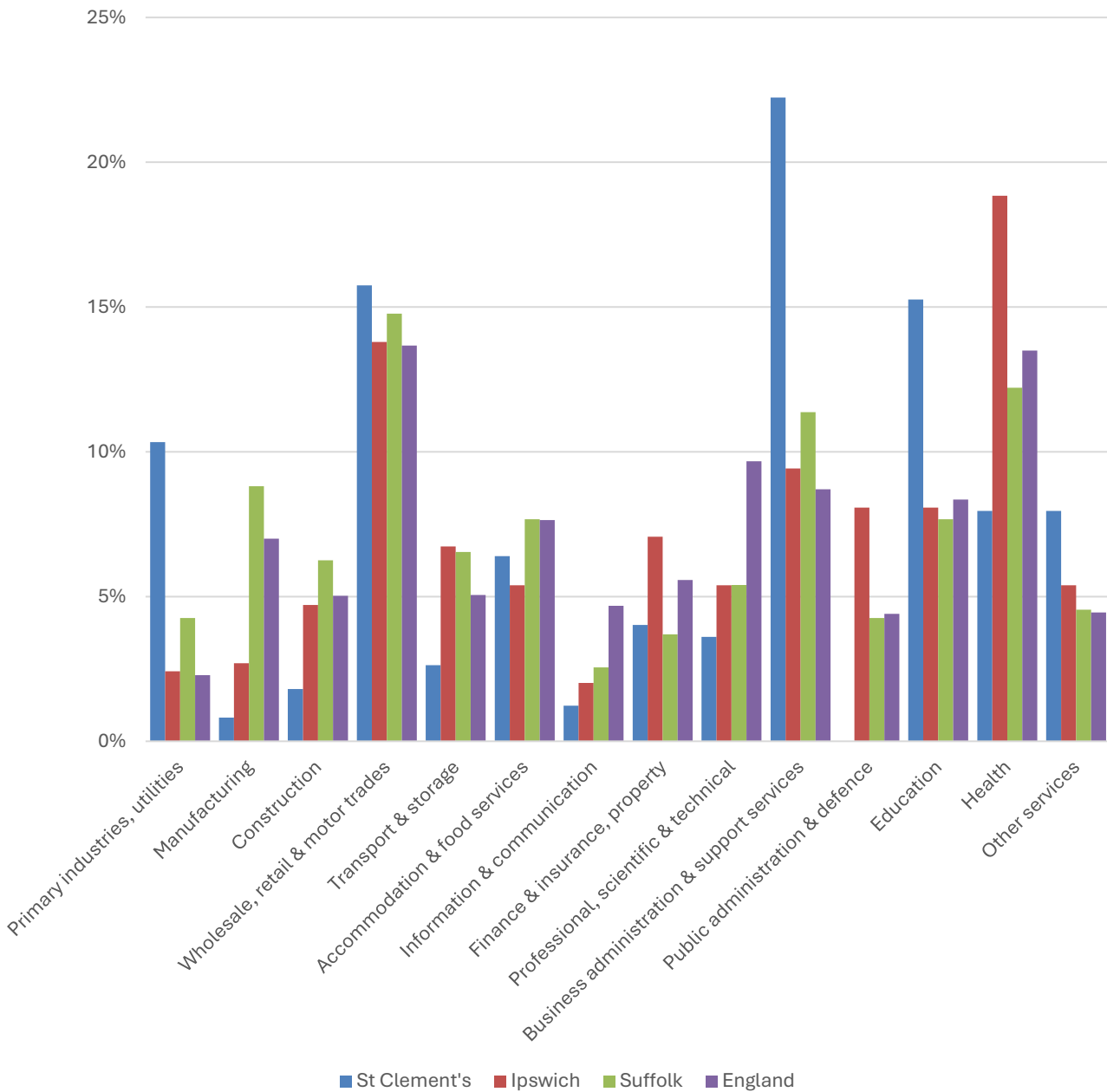


- According to the latest data (2021 Census), 72% of the population of St Clement's is White British.
- There were 3,338 (28%) residents from minority ethnic groups in the division, around 2.2 times the proportion in Suffolk overall, and 1.5 percentage points larger than the England average.
- St Clement's has a broadly similar diversity profile to Ipswich Borough. The Asian/Asian British population makes up 7.5% of people in the division, compared to 5.5% across Ipswich.

	All people		White British		Other White		Mixed		Asian and Asian British		Black and Black British		Other Ethnic Group		Total minority ethnic population	
	Count	%	Count	%	Count	%	Count	%	Count	%	Count	%	Count	%	Count	%
St Clement's	11,941		8,603	72.0	1,241	10.4	533	4.5	893	7.5	377	3.2	294	2.5	3,338	28.0
Ipswich	139,643		104,208	74.6	13,549	9.7	6,409	4.6	7,611	5.5	4,882	3.5	2,984	2.1	35,435	25.4
Suffolk	760,687		664,205	87.3	44,066	5.8	17,807	2.3	17,483	2.3	10,168	1.3	6,958	0.9	96,482	12.7
England				73.5		7.5		3.0		9.6		4.2		2.2		26.5

Economy

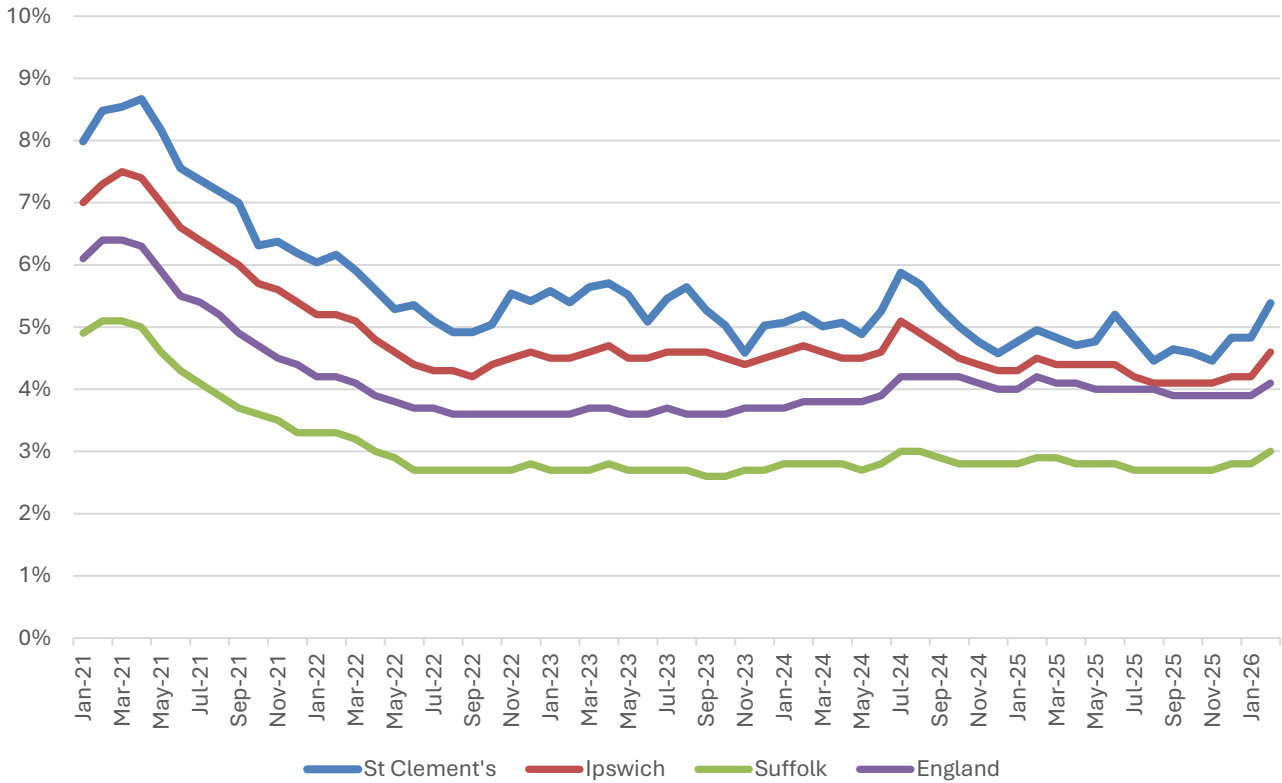
There are around 6,100 people employed in St Clement's.



- Business administration, scientific and technical activities (22% of local jobs), education (15.3%), and primary industries/utilities (10.3%) stand out as being particularly important in St Clement's. Each of these sectors accounts for a significantly larger proportion of local jobs than they do elsewhere in Ipswich, Suffolk, or England.
- Wholesale, retail and motor trades also provides a large proportion of local jobs, but this is broadly similar to elsewhere.

Labour Market

Out-of-work benefit claimant rate



- In common with Ipswich, Suffolk and England as a whole, St Clement's saw a steady decline in the proportion of the working age population claiming out-of-work benefits during 2021 and into 2022 following a peak during the COVID-19 pandemic.
- Since then, the claimant rate has fluctuated within half a percentage point or so around 5%.
- In February 2026 (the latest available data), 5.4% of 16-64-year-olds were claiming out-of-work benefits in the division.
- The claimant rate in the division is consistently higher than the district, county and national benchmarks.

Schools

School Information

Schools in the Division

Name	Phase	Academy Status	No. pupils	Average cohort size at:			
				Foundation Stage (age 4-7)	KS2 (age 7-11)	KS4 (age 14-16)	KS5 (age 16-18)
Clifford Road Primary School & Nursery	Primary	LA	404	52	59		
Rose Hill Primary	Primary	AC	259	30	43		
Parkside Academy	Pupil referral unit/Alternative provision	AC	5				

Ofsted information

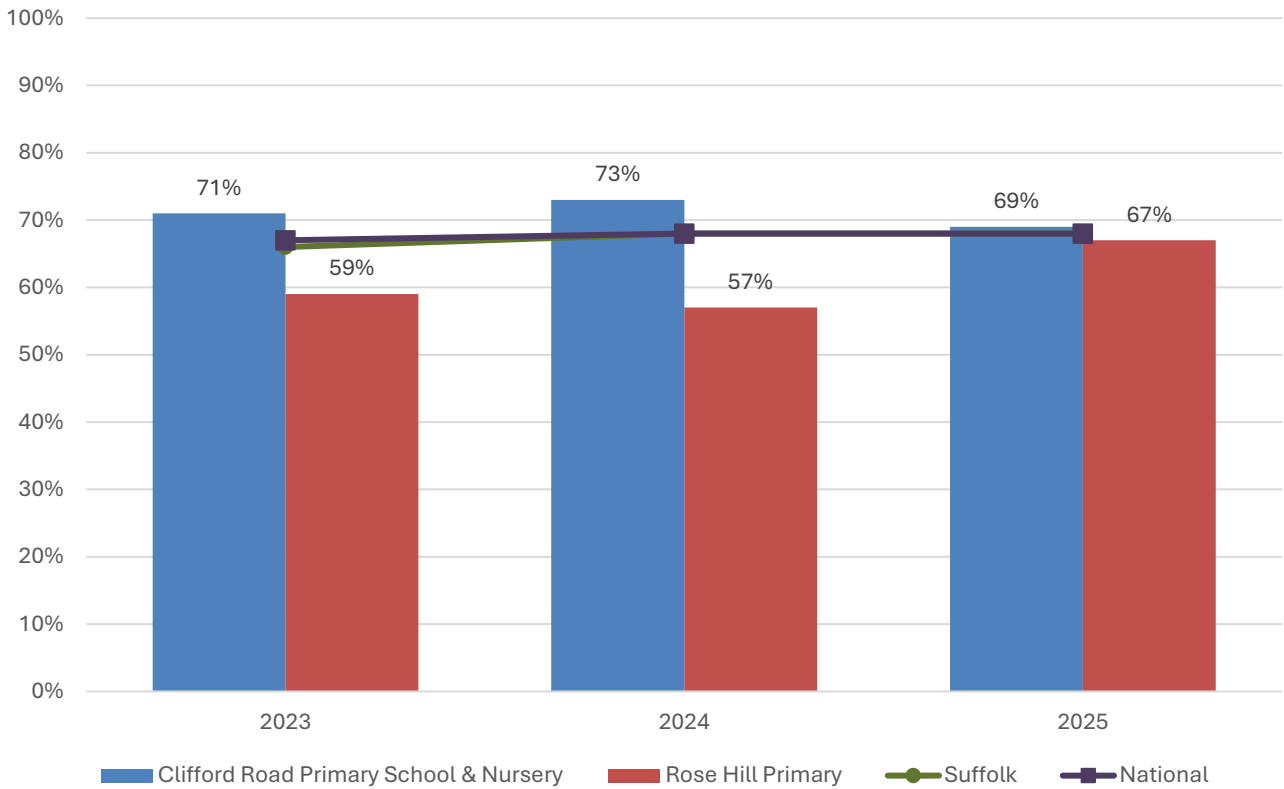
Name	Overall effectiveness	Effectiveness of leadership and management	Behaviour and attitudes	Personal development	Early years provision (if applicable)	Quality of education	Last inspection date
Clifford Road Primary School & Nursery	5	3	3	3	3	3	26/11/2024
Rose Hill Primary	5	2	2	2	2	2	21/01/2025
Parkside Academy	2	2	2	2	9	2	30/01/2024

Code	Judgement	Code	Judgement
0	Insufficient evidence	SM	Special measures
1	Outstanding	8	Does not apply
2	Good	9	No judgement
3	Requires improvement	Null	No data available
4	Inadequate	Not judged	Not judged
SWK	Serious weaknesses	5	No overall grade

School Attainment

Foundation Stage Profile (reception)

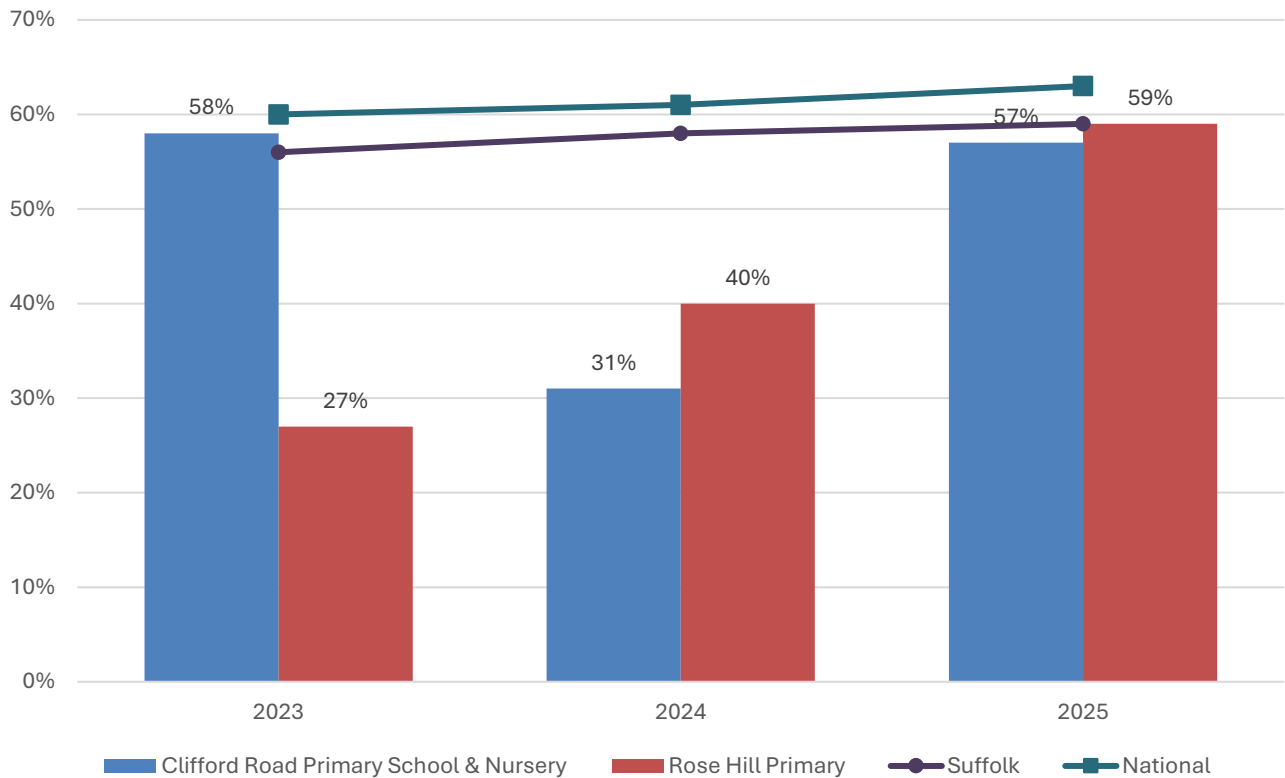
% pupils achieving Good Level of Development (GLD)



- In 2025, 69% of pupils at Clifford Road Primary School and Nursery achieved a Good Level of Development at Foundation Stage, a single percentage point above the national average, and two percentage points above the figure at the other school in St Clement's, Rose Hill Primary.
- Foundation Stage attainment at Clifford Road Primary School and Nursery has been above the Suffolk and national average in each of the last three years of available data.
- The opposite is true of attainment at Rose Hill Primary.

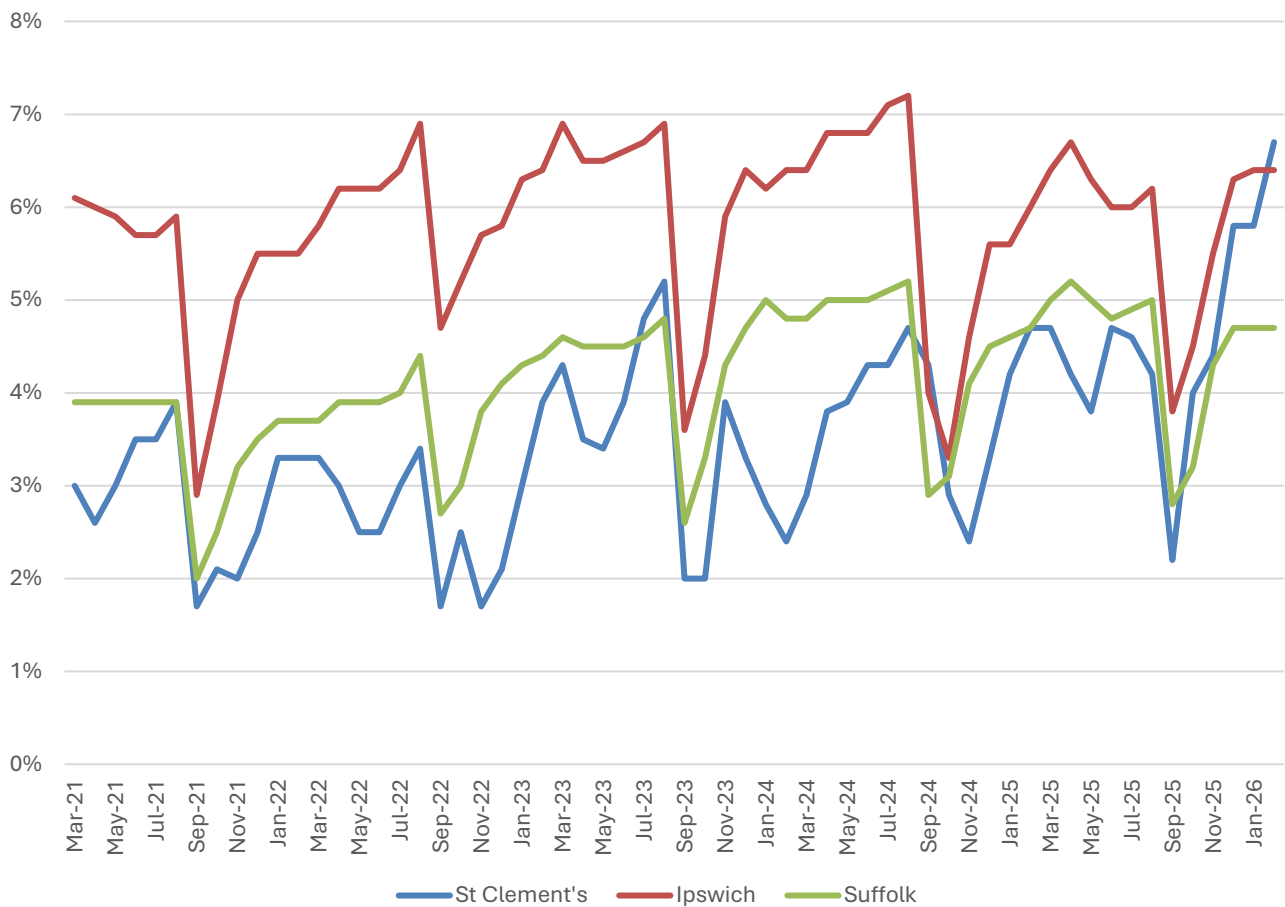
Key Stage 2 (age 11)

% pupils achieving the Expected Level or better in Reading, Writing and Mathematics



- In 2025, 59% of pupils at Rose Hill Primary School and 57% at Clifford Road Primary achieved the expected level or better in reading, writing and mathematics, slightly below the national figure of 63%.
- KS2 attainment at both schools was consistently below the national benchmark throughout this period.

NEET % (Not in Education, Employment or Training)



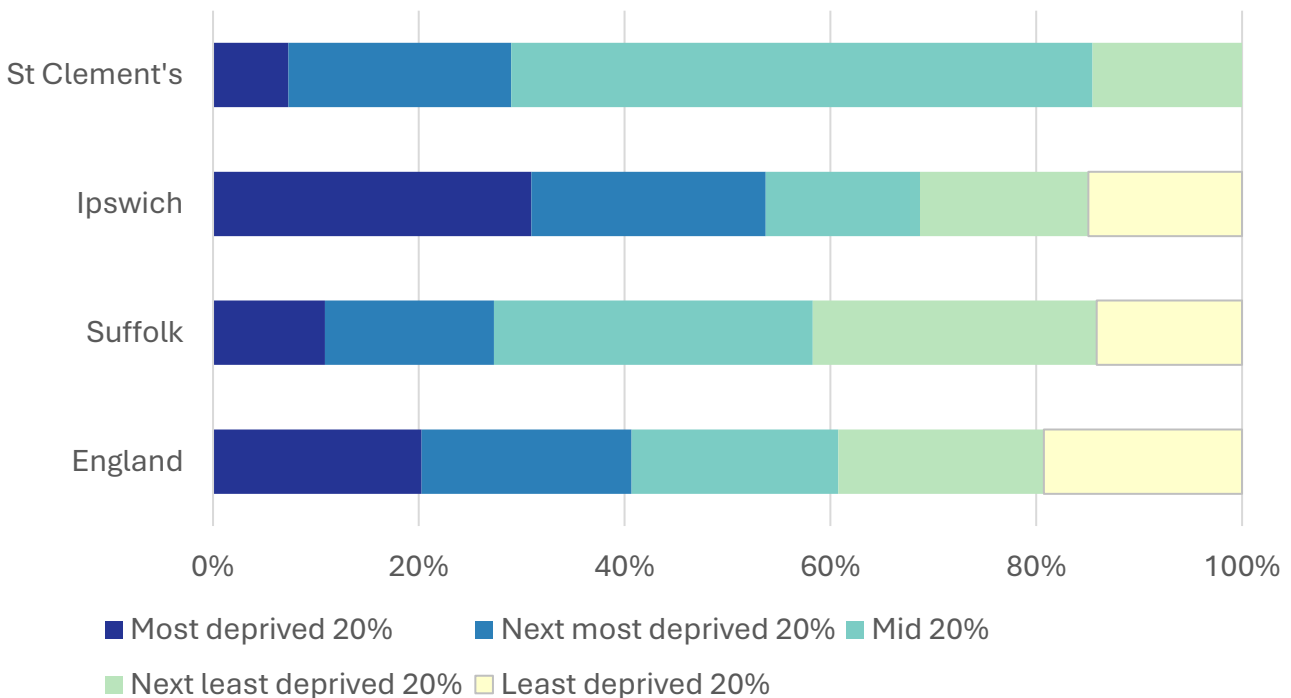
- In February 2026, 6.7% of 16-17-year-olds in St Clement's were classified as NEET (not in education, employment or training).
- NEET levels fluctuate considerably according to the time of year and due to small numbers of 16-17-year-olds in the division, typically being at their lowest at the beginning of a new school year.
- In St Clement's, the proportion of children who are NEET is generally below the district and county figure. There has been a recent rise in NEET levels in the division.

Index of Multiple Deprivation (IMD) 2025 (see map overleaf)

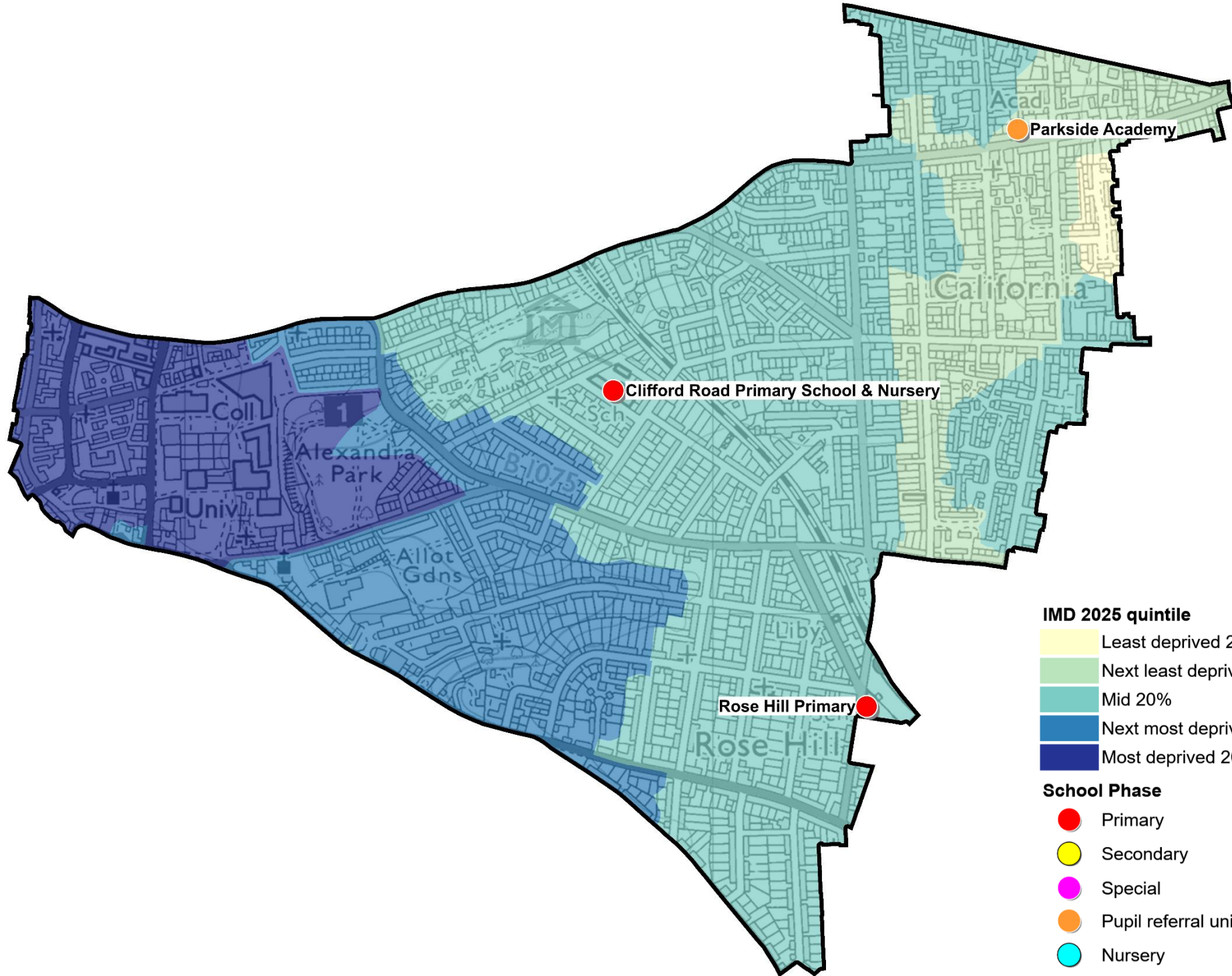
The IMD combines a number of indicators, chosen to cover a range of economic, social and housing issues, into a single deprivation score for each small area in England. This allows each area to be ranked relative to one another according to their level of deprivation. Small areas (Lower Super Output Areas, average population 1,700) are most commonly described as being in 1 of 5 quintile bands. The bottom quintile represents the 20% of areas that are the most deprived in England; these are shaded pale yellow on the map. The top quintile represents the least deprived areas in England and is shaded dark blue.

The Index is widely used to analyse patterns of deprivation, identify areas that would benefit from special initiatives or programmes and as a tool to determine eligibility for specific funding streams.

The chart below shows the percentage of the population of the division that live in areas ranked among each of the five quintiles of deprivation, alongside the district, county and England comparators.



- Deprivation levels in St Clement's are varied, with four of the quintiles of the IMD represented in the division.
- Just over half (56%) of the population of the division live in areas that are ranked among the middle deprivation quintile in England, with 22% of residents living in neighbourhoods among the second most deprived quintile, 15% in the second least deprived quintile and the remaining 7% of the division ranked in the most deprived quintile.
- See the map overleaf for the distribution of IMD 2025 results across the division.



IMD 2025 quintile

- Least deprived 20%
- Next least deprived 20%
- Mid 20%
- Next most deprived 20%
- Most deprived 20%

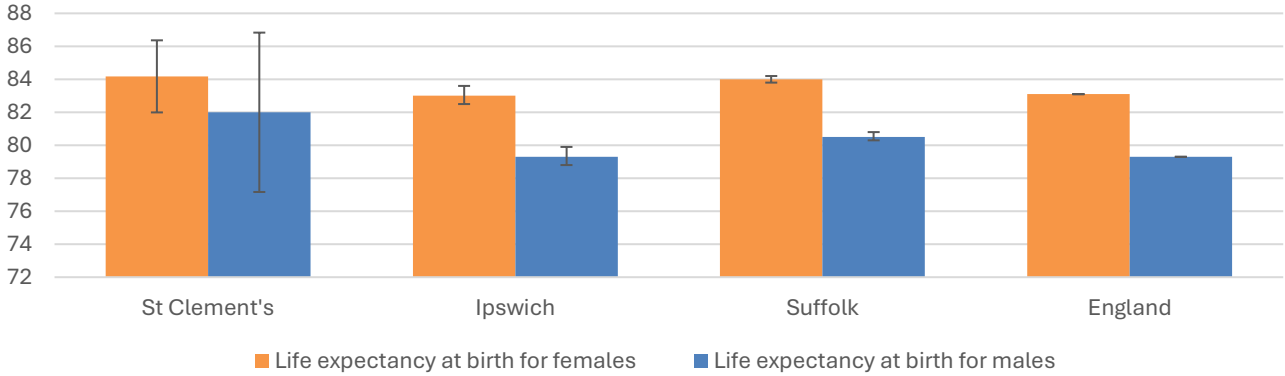
School Phase

- Primary
- Secondary
- Special
- Pupil referral unit/Alternative provision
- Nursery

Health

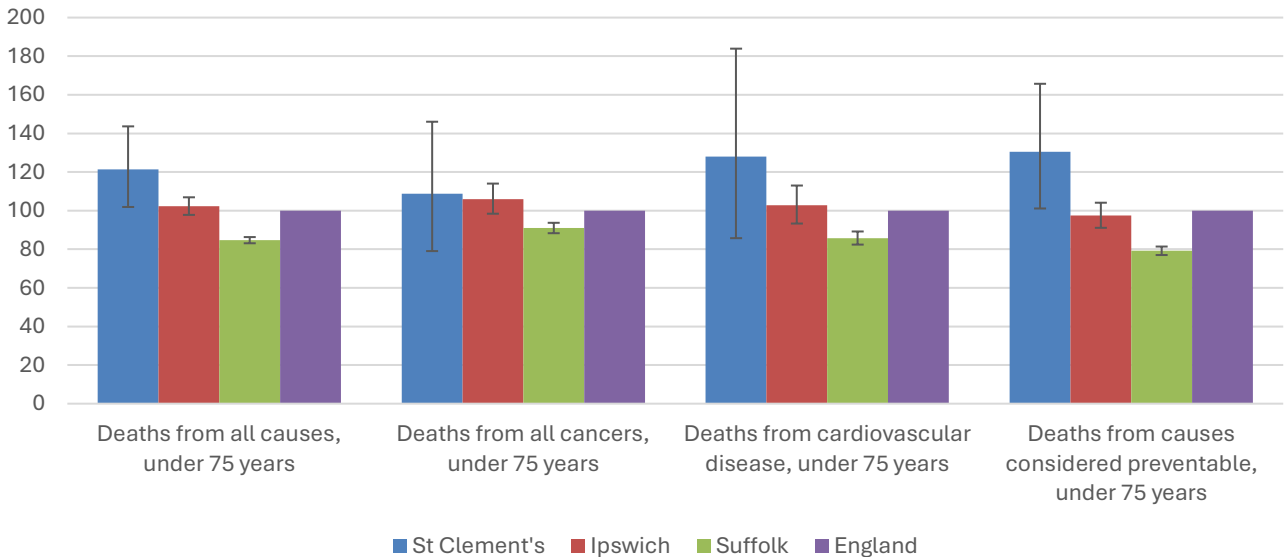
The local data used here is based on relatively small numbers. The confidence limits provide an indication of the reliability of the data. The 95% confidence intervals utilised on the chart provide a range within which there is 95% chance of the true result lying.

Life expectancy at birth



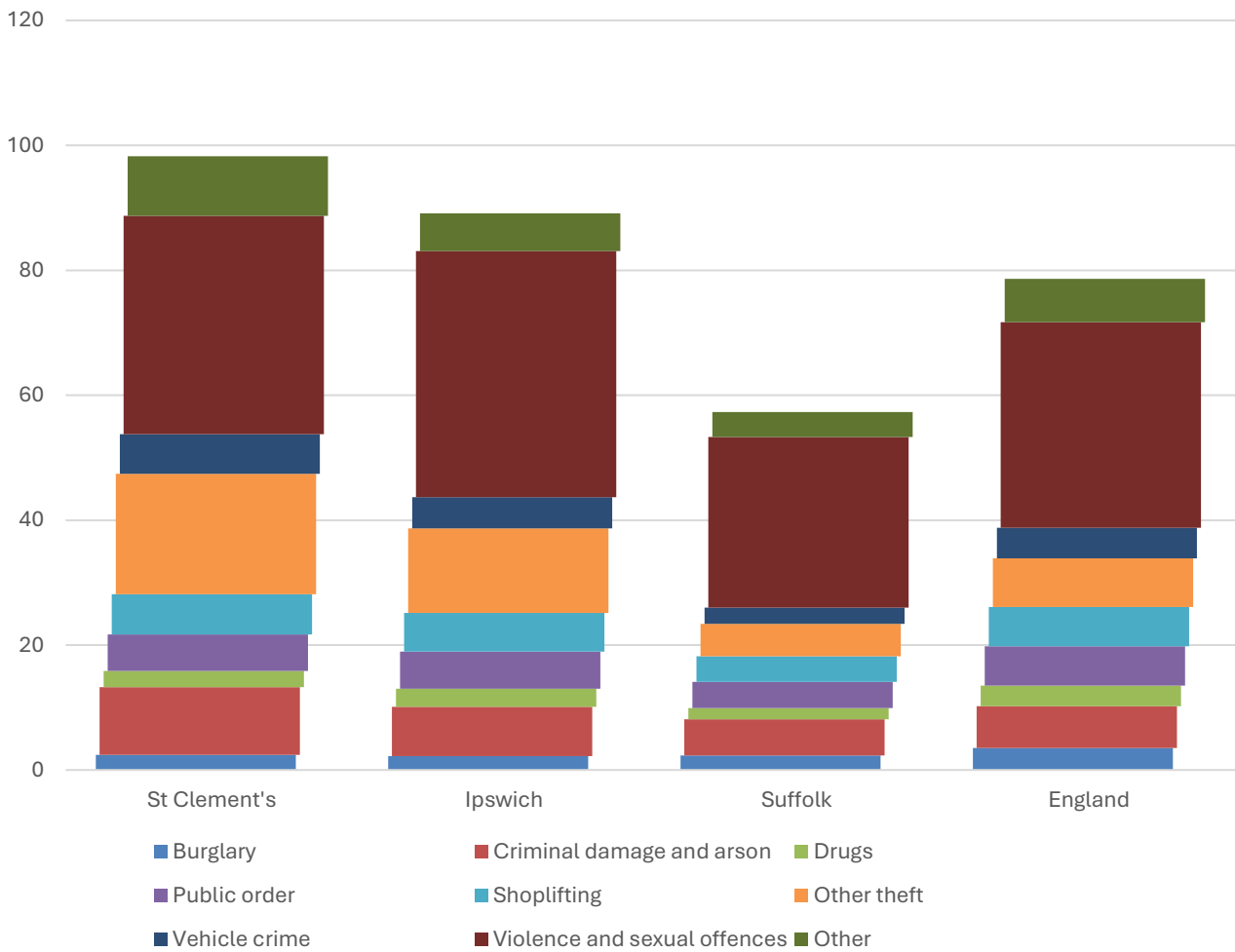
- The latest life expectancy at birth estimates for St Clement's are 84.2 for females (the England figure is 83.1), and 82 for males (compared to 79.3 nationally).
- Life expectancy for both males and females in the division are statistically similar to the England figures.

Deaths, under 75 years, standardised mortality ratio



- Estimated standardised mortality ratios for early deaths from all causes, all cancers, cardiovascular disease and causes considered preventable in St Clement's are above 100, indicating that deaths in under 75s due to these causes are higher than in England.
- Confidence intervals around these estimates are wide for local data, but the SMRs for deaths from all causes and from causes considered preventable are statistically significantly higher than England.
- The standardised mortality ratio data shown here means that for every 100 early deaths from all causes across England as a whole, there are an estimated 121 comparable deaths in St Clement's.

Crime & Community Safety



- The crime level in St Clement's is high compared to the county average, and also just above the Ipswich Borough rate.
- In the year to the end of January 2026, there were 98 recorded crimes per 1,000 residents in the division, compared to 89 in Ipswich, and 57 countywide.
- All types of crime occur at a higher rate in the division than the county average.
- The most common type of crime recorded during this period was violence and sexual offences, which accounted for more than a third of all recorded crimes in the division.

Data sources

Category	Indicator	Source
Demographic Profile	Quinary population table 2024	ONS 2024 mid-year population estimates
	Population pyramid 2024	ONS 2024 mid-year population estimates
	Ethnicity 2021	ONS 2021 Census
Economy	Employment by broad industrial sector 2024	ONS Business Register and Employment Survey via NOMIS
Labour market	Claimant count: The number of people claiming Jobseeker's Allowance plus those who claim Universal Credit who are out of work (% 16-64 population) January 2021-February 2026	DWP via NOMIS
Education	School information and attainment 2023-2025	Suffolk County Council CYP iHub
	% 16-17-year-olds NEET (Not in Employment, Education or Training) March 2021 to February 2026	Suffolk County Council CYP iHub via the Suffolk Observatory
Deprivation	Index of Multiple Deprivation 2025	Ministry of Housing, Communities and Local Government
Health	Life expectancy at birth 2016-2020 (2018-2020 for comparator areas)	Office for Health Improvement and Disparities
Health	Standardised mortality ratio for deaths from all causes, cancer, cardiovascular disease, and from causes considered preventable (under 75 years), 2016-2020 (2019-2023 for comparator areas). The standardised mortality ratio is the ratio of observed deaths in the study group to expected deaths in the general population	Office for Health Improvement and Disparities
Community Safety	Recorded crime rate per 1,000 resident population February 2025 to January 2026	Data.police.uk via the Suffolk Observatory

For more data and information about St Clement's Electoral Division, see the Suffolk Observatory www.suffolkobservatory.info

