

Priory Heath

County Electoral Division profile

May 2026

This division comprises Priory Heath Ward in its entirety, and parts of Gainsborough and Holywells Wards



Contents

- Demographic Profile: Age & Ethnicity
- Economy and Labour Market
- Schools & NEET
- Index of Multiple Deprivation
- Health
- Crime & Community Safety
- Additional Information
- Data Sources

Electoral Division Profiles: an introduction

These profiles have been produced to support elected members, constituents and other interested parties in understanding the demographic, economic, social and educational profile of their neighbourhoods. We have used the latest data available at the time of publication.

Much more data is available from national and local sources than is captured here, but it is hoped that the profile will be a useful starting point for discussion, where local knowledge and experience can be used to flesh out and illuminate the information presented here.

The profile can be used to help look at some fundamental questions e.g.

- Does the age profile of the population match or differ from the national profile?
- Is there evidence of the ageing profile of the county in all the wards in the Division or just some?
- How diverse is the community in terms of ethnicity?
- What is the impact of deprivation on families and residents?
- Does there seem to be a link between deprivation and school performance?
- What is the breakdown of employment sectors in the area?
- Is it a relatively healthy area compared to the rest of the district or county?
- What sort of crime is prevalent in the community?

A vast amount of additional data is available on the **Suffolk Observatory**

www.suffolkobservatory.info

The Suffolk Observatory is a free online resource that contains all Suffolk's vital statistics; it is the one-stop-shop for information and intelligence about Suffolk. Through data, reports and maps, the Suffolk Observatory provides a comprehensive picture of the County. It is a great source for useful facts and figures that can be used for writing reports and presentations, informing strategic and business planning, preparing funding applications or supporting academic research. Data is presented around the key themes of population, children and young people, health and social care, housing, crime and community safety, deprivation, economy and employment and environment. All areas of the county are covered, right down to district, electoral division, ward and parish level, with information easily accessible in a variety of formats. You can also build your own reports for custom areas.

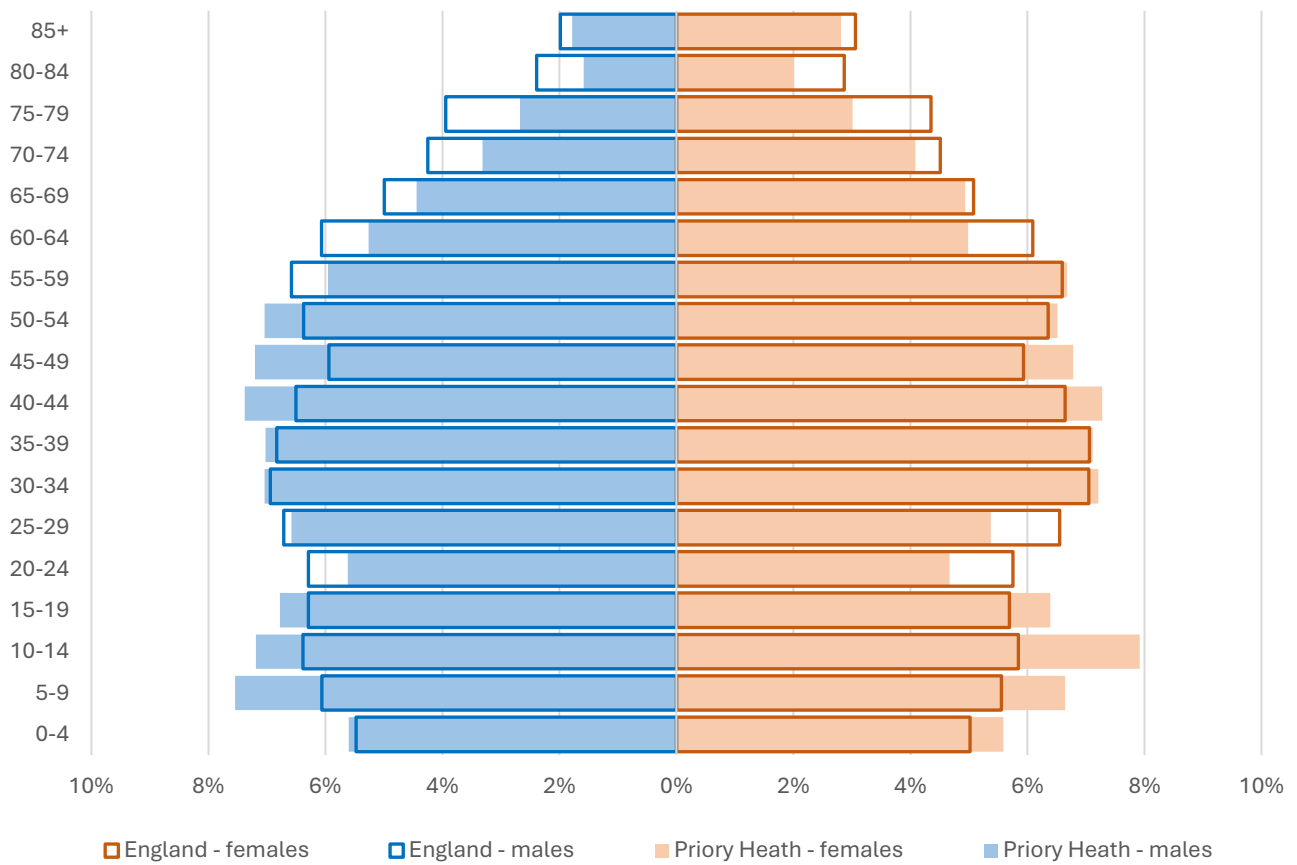
Technical Notes:

1. Where electoral divisions do not exactly match the boundaries at which the data is available (e.g. ward, Output Area or Lower Super Output Area), we have adopted a "best-fit" approach to produce a dataset.
2. District, county and national level data is provided where possible to provide a context for comparisons.

Demographic Profile - Age

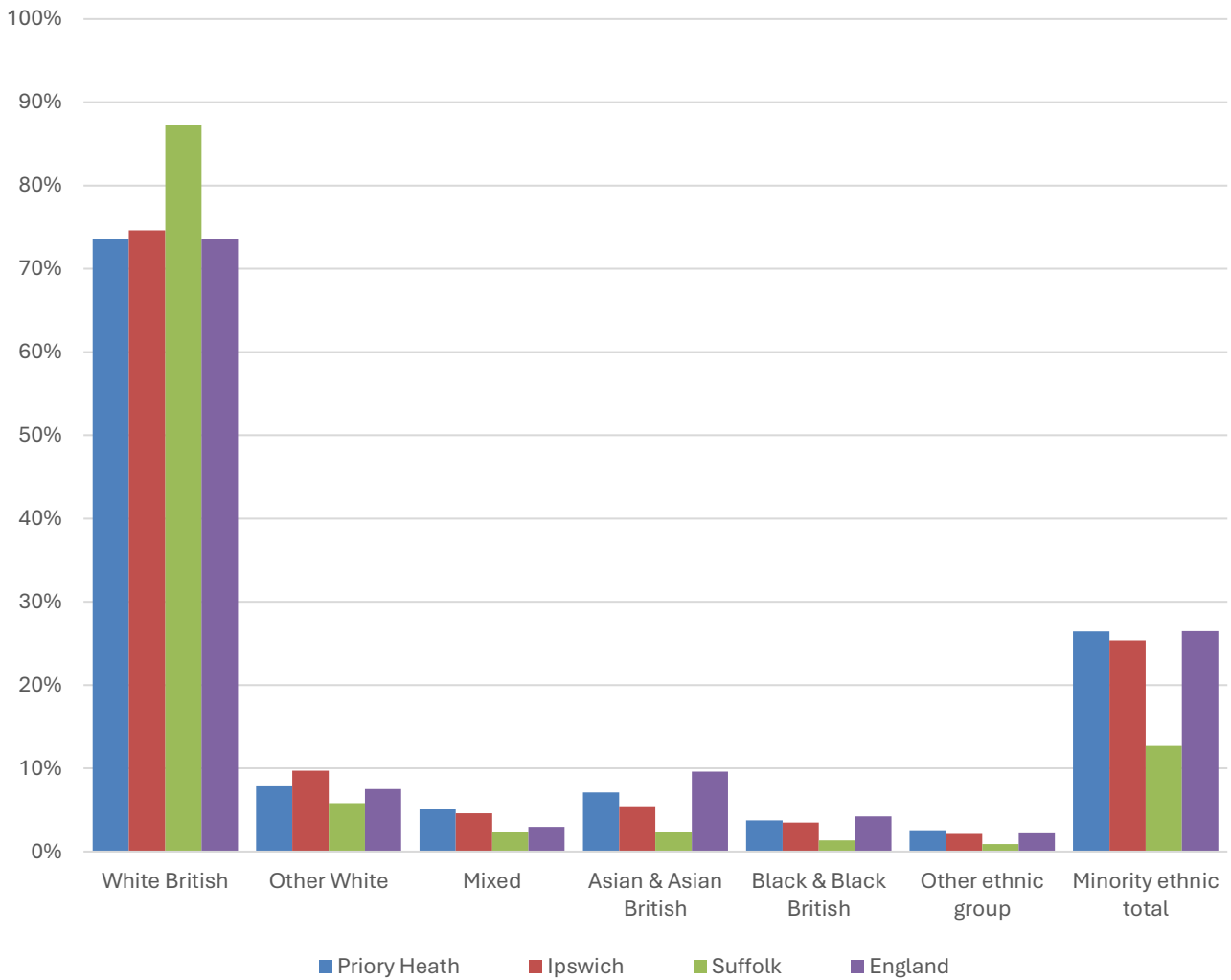
In mid-2024, the estimated population of Priory Heath stood at 11,584, an increase of 5.6% over the past decade. The age structure of the component wards and the division as a whole is set out below. The part of Holywells Ward that fall inside Priory Heath division is too small for a population estimate to be available.

	Priory Heath Division	Priory Heath Ward	Gainsborough Ward
All Ages	11,584	9,688	1,896
0-4	648	518	130
5-9	820	703	117
10-14	876	743	133
15-19	762	666	96
20-24	594	534	60
25-29	690	594	96
30-34	826	674	152
35-39	819	673	146
40-44	849	718	131
45-49	809	689	120
50-54	784	658	126
55-59	733	589	144
60-64	593	488	105
65-69	544	452	92
70-74	430	341	89
75-79	330	271	59
80-84	209	160	49
85+	268	217	51



- The age pyramid for Priory Heath division is broadly similar to that of England as a whole, but slightly younger overall.
- The most common age group in the division is 10-14-year-olds (7.6% of the local population), followed by 40-44-year-olds (7.3%), and 30-34-year-olds (7.1%).
- Just over a quarter of the population of Priory Heath is aged under 20.
- There is a lower-than-average proportion of residents of retirement age in the division.

Demographic Profile - Ethnicity

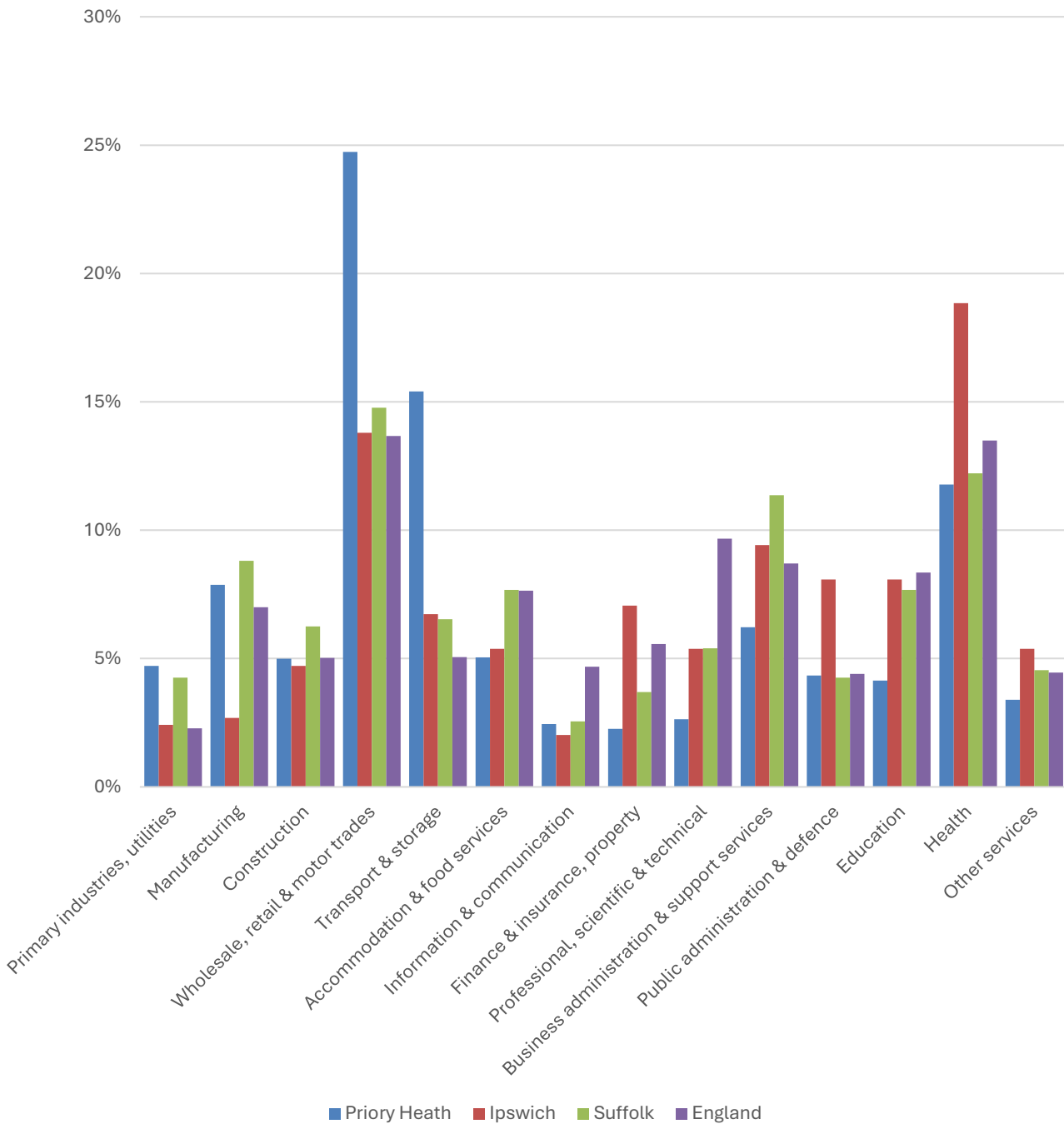


- According to the latest data (2021 Census), 73.6% of the population of Priory Heath is White British.
- There were 3,047 (26.4%) residents from minority ethnic groups in the division, around twice the proportion in Suffolk overall, and very similar to the England average.
- Priory Heath has a similar proportion of minority ethnic residents as Ipswich Borough, although the composition is somewhat different, with proportionally larger Asian/Asian British and Mixed/Multiple ethnic group populations in the division.

	All people		White British		Other White		Mixed		Asian and Asian British		Black and Black British		Other Ethnic Group		Total minority ethnic population	
	Count	%	Count	%	Count	%	Count	%	Count	%	Count	%	Count	%	Count	%
Priory Heath	11,526		8,479	73.6	915	7.9	586	5.1	818	7.1	433	3.8	295	2.6	3,047	26.4
Ipswich	139,643		104,208	74.6	13,549	9.7	6,409	4.6	7,611	5.5	4,882	3.5	2,984	2.1	35,435	25.4
Suffolk	760,687		664,205	87.3	44,066	5.8	17,807	2.3	17,483	2.3	10,168	1.3	6,958	0.9	96,482	12.7
England				73.5		7.5		3.0		9.6		4.2		2.2		26.5

Economy

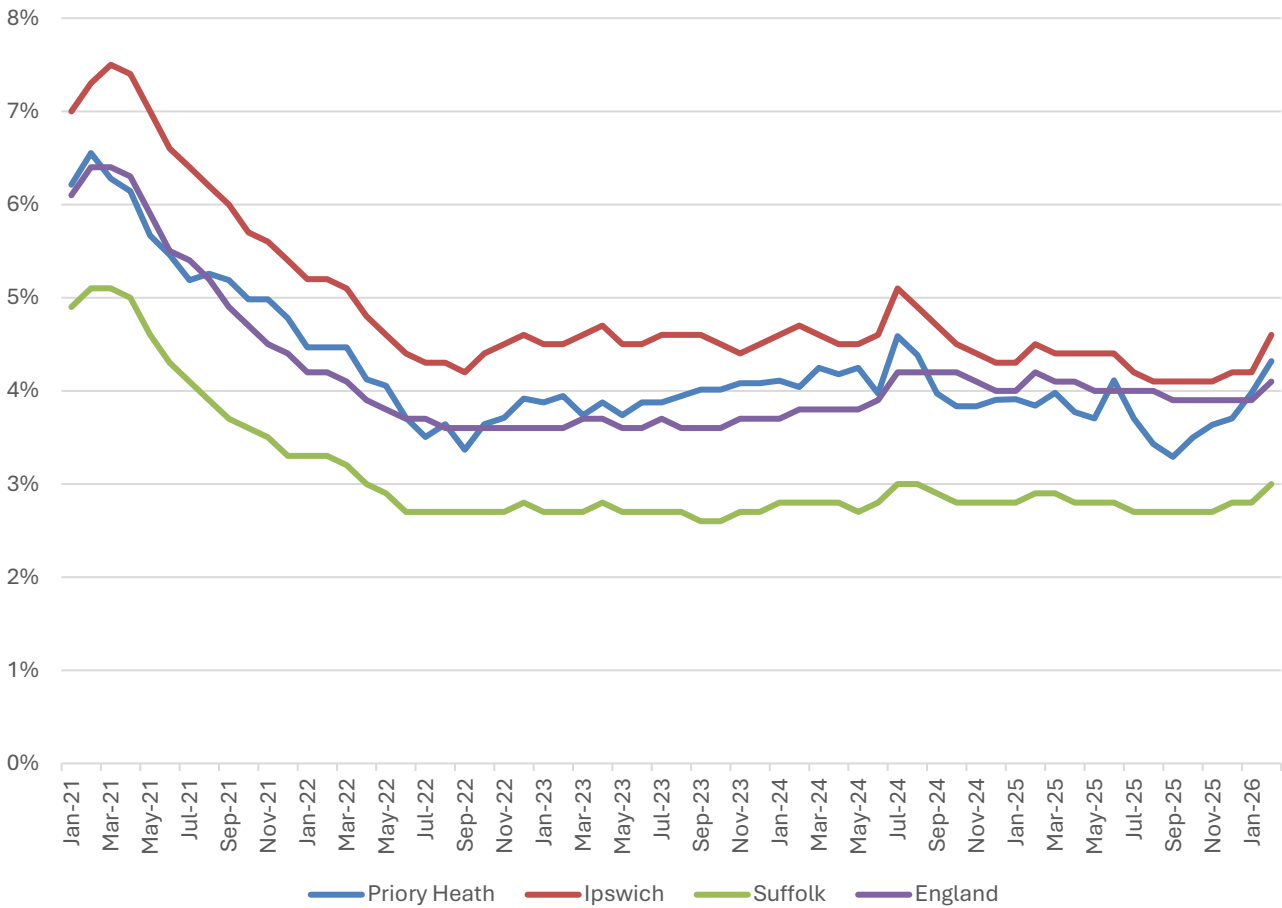
There are around 10,600 people employed in Priory Heath.



- Wholesale, retail and motor trades provides just under one quarter of the jobs in Priory Heath, compared to about 15% across Suffolk as a whole.
- The next most important sector in the division is transport and storage, which accounts for around three times the proportion of jobs in Priory Heath as it does nationally.
- The manufacturing sector is also locally important.

Labour Market

Out-of-work benefit claimant rate



- In common with Ipswich, Suffolk and England as a whole, Prioory Heath saw a steady decline in the proportion of the working age population claiming out-of-work benefits during 2021 and into 2022 following a peak during the COVID-19 pandemic.
- Since then, the claimant rate has been fairly stable within half a percentage point of 4%.
- In February 2026 (the latest available data), 4.3% of 16-64-year-olds were claiming out-of-work benefits in the division.
- The claimant rate in the division is consistently similar to the national level, above that of Suffolk, and below the overall Ipswich Borough rate.

Schools

School Information

Schools in the Division

Name	Phase	Academy Status	No. pupils	Average cohort size at:			
				Foundation Stage (age 4-7)	KS2 (age 7-11)	KS4 (age 14-16)	KS5 (age 16-18)
Murrayfield Primary - A Paradigm Academy	Primary	AS	400	44	62		
Ravenswood Community Primary School	Primary	AC	385	51	56		
Ipswich Academy	Secondary	AS	981			194	
Sir Bobby Robson School	Special	F	60		5	10	

Academy Status key: AS = Academy Sponsored, AC = Academy Converter, LA = LA Maintained, F = Free

Ofsted information

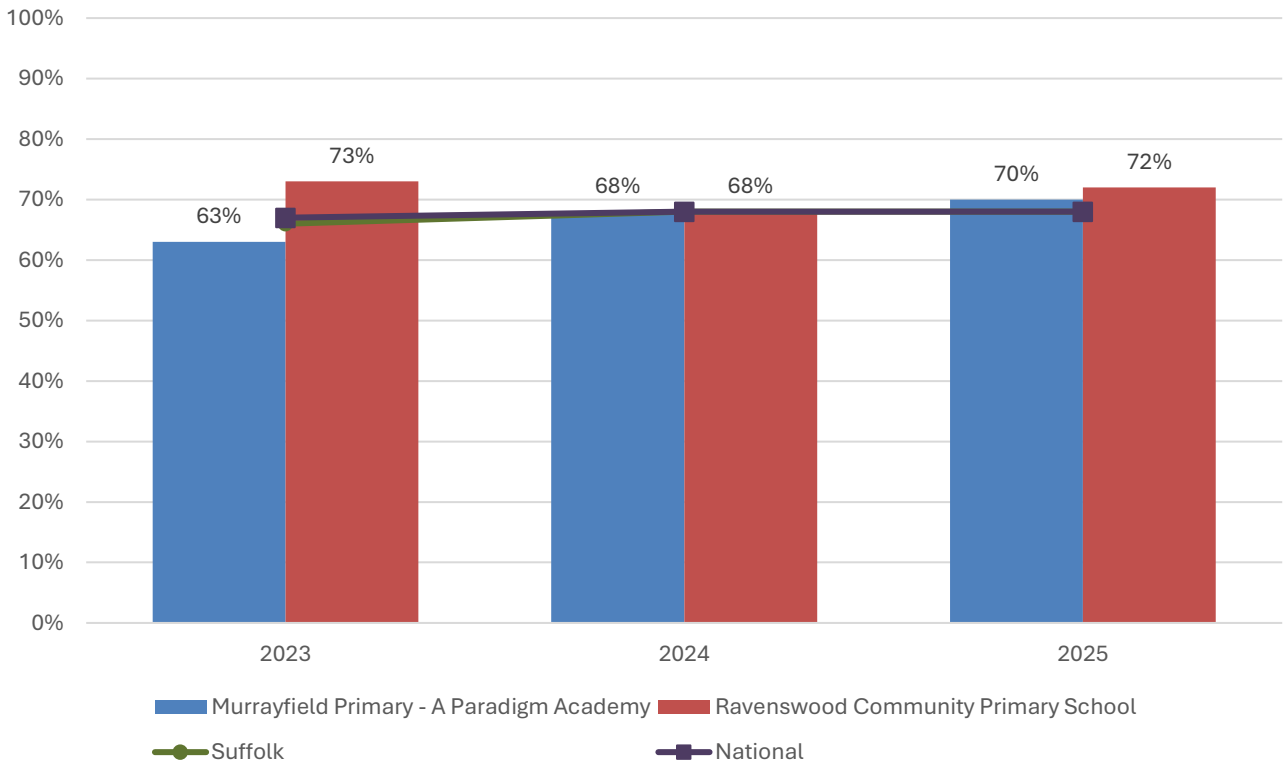
Name	Overall effectiveness	Effectiveness of leadership and management	Behaviour and attitudes	Personal development	Early years provision (if applicable)	Quality of education	Last inspection date
Murrayfield Primary – A Paradigm Academy	5	2	2	2	1	2	28/01/2025
Ravenswood Community Primary School	2	2	9	9	9	9	27/09/2013
Ipswich Academy	3	3	3	2	9	3	08/05/2024
Sir Bobby Robson School	2	2	2	2	9	2	14/06/2023

Code	Judgement	Code	Judgement
0	Insufficient evidence	SM	Special measures
1	Outstanding	8	Does not apply
2	Good	9	No judgement
3	Requires improvement	Null	No data available
4	Inadequate	Not judged	Not judged
SWK	Serious weaknesses	5	No overall grade

School Attainment

Foundation Stage Profile (reception)

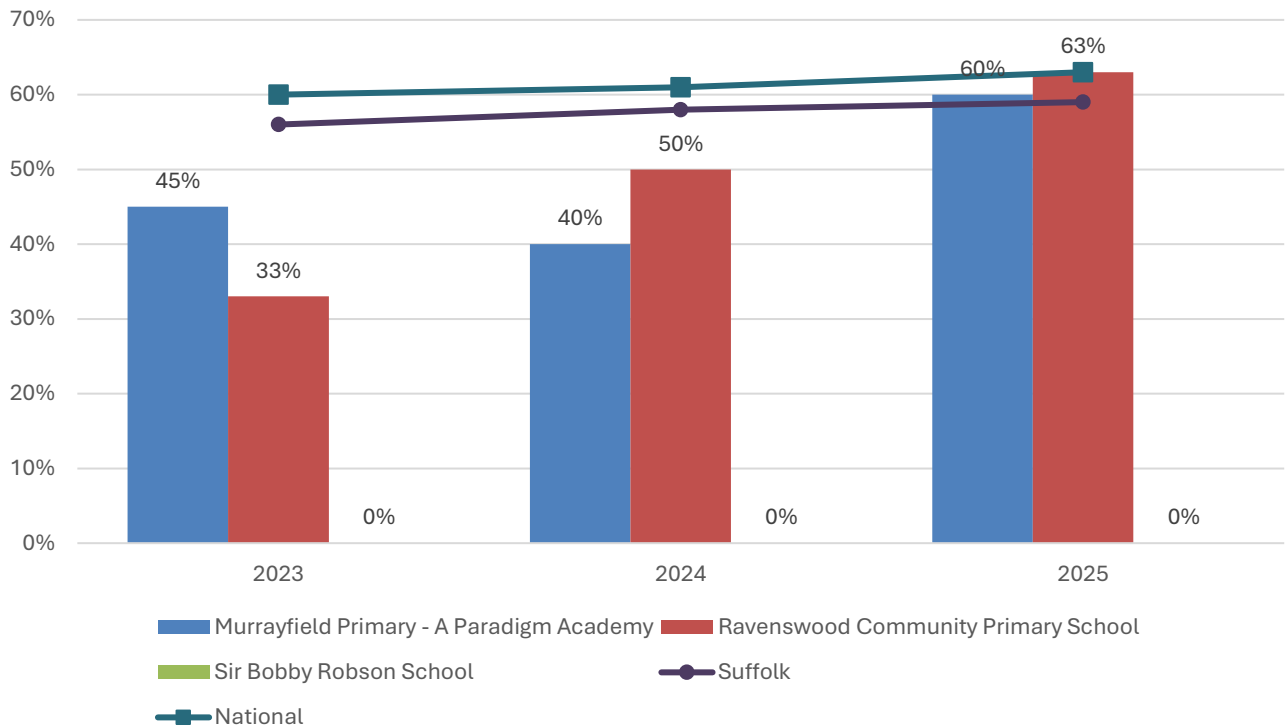
% pupils achieving Good Level of Development (GLD)



- Foundation Stage attainment at Murrayfield Primary and Ravenswood Community Primary Schools was consistently close to or above the national figure from 2023 to 2025.
- Only at Murrayfield Primary in 2023 did attainment at either school fall below the national benchmark.
- In 2025, 70% of pupils at Murrayfield Primary and 72% at Ravenswood Community Primary achieved a Good Level of Development at Foundation Stage, compared to the national figure of 68%.

Key Stage 2 (age 11)

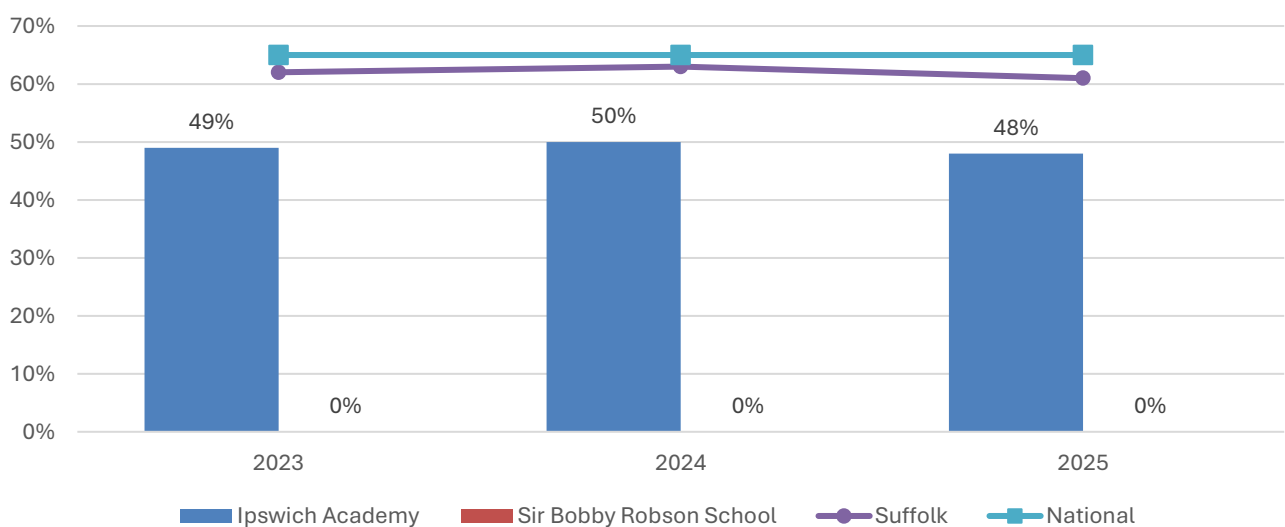
% pupils achieving the Expected Level or better in Reading, Writing and Mathematics



- Key stage 2 attainment at Murrayfield and Ravenswood Community Primary Schools was well below average in 2023 and 2024, before recovering in 2025.
- In the most recent year of data, 60% of pupils at Murrayfield Primary and 63% at Ravenswood Community Primary achieved the expected level or better in reading, writing and mathematics, compared to 63% nationally.

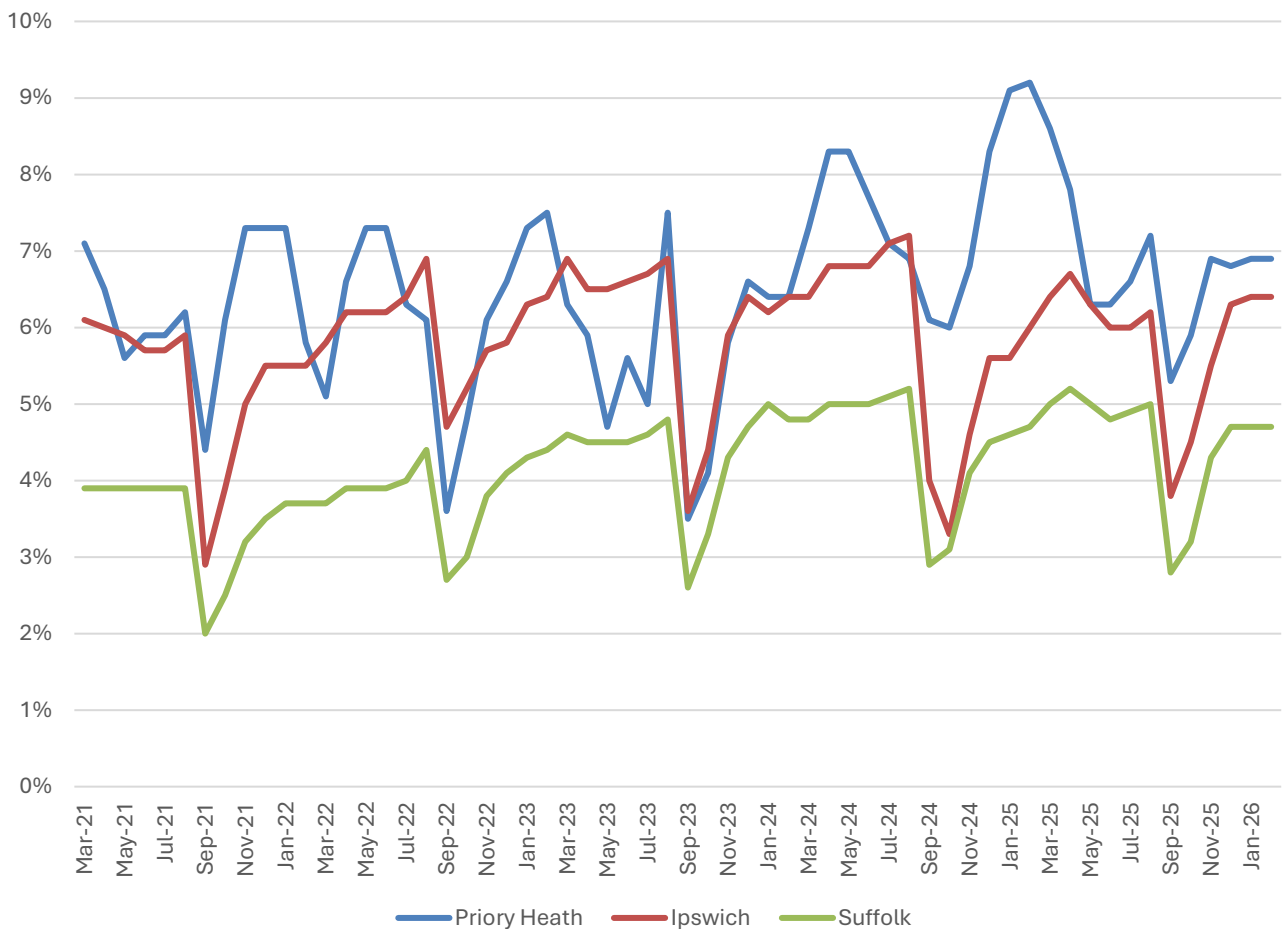
Key Stage 4 (GCSE) (age 16)

% pupils achieving level 4-9 in English and Mathematics



- Key Stage 4 attainment at Ipswich Academy has been consistently around 15 percentage points below the national benchmark over the last three years.

NEET % (Not in Education, Employment or Training)



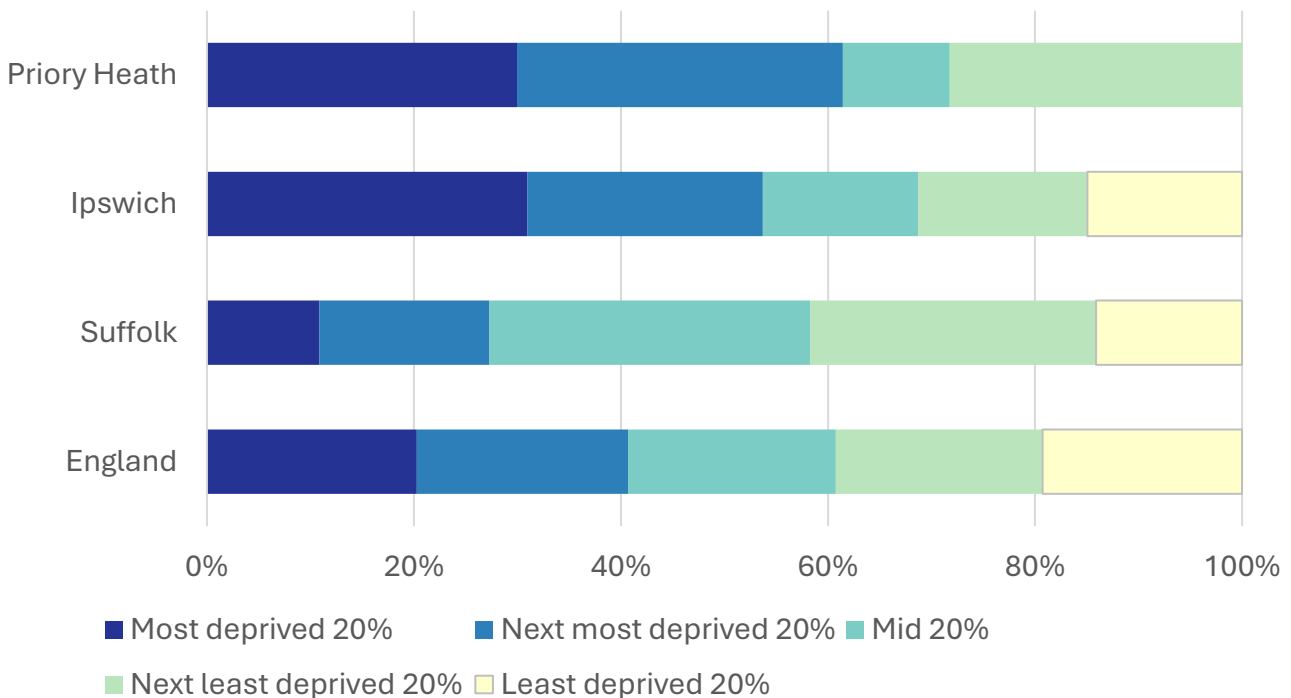
- In February 2026, 6.9% of 16-17-year-olds in Priory Heath were classified as NEET (not in education, employment or training).
- NEET levels fluctuate considerably according to the time of year and due to small numbers of 16-17-year-olds in the division, typically being at their lowest at the beginning of a new school year.
- In Priory Heath, the proportion of children who are NEET is generally similar to or above the Ipswich Borough figure, and invariably higher than the Suffolk county level.

Index of Multiple Deprivation (IMD) 2025 (see map overleaf)

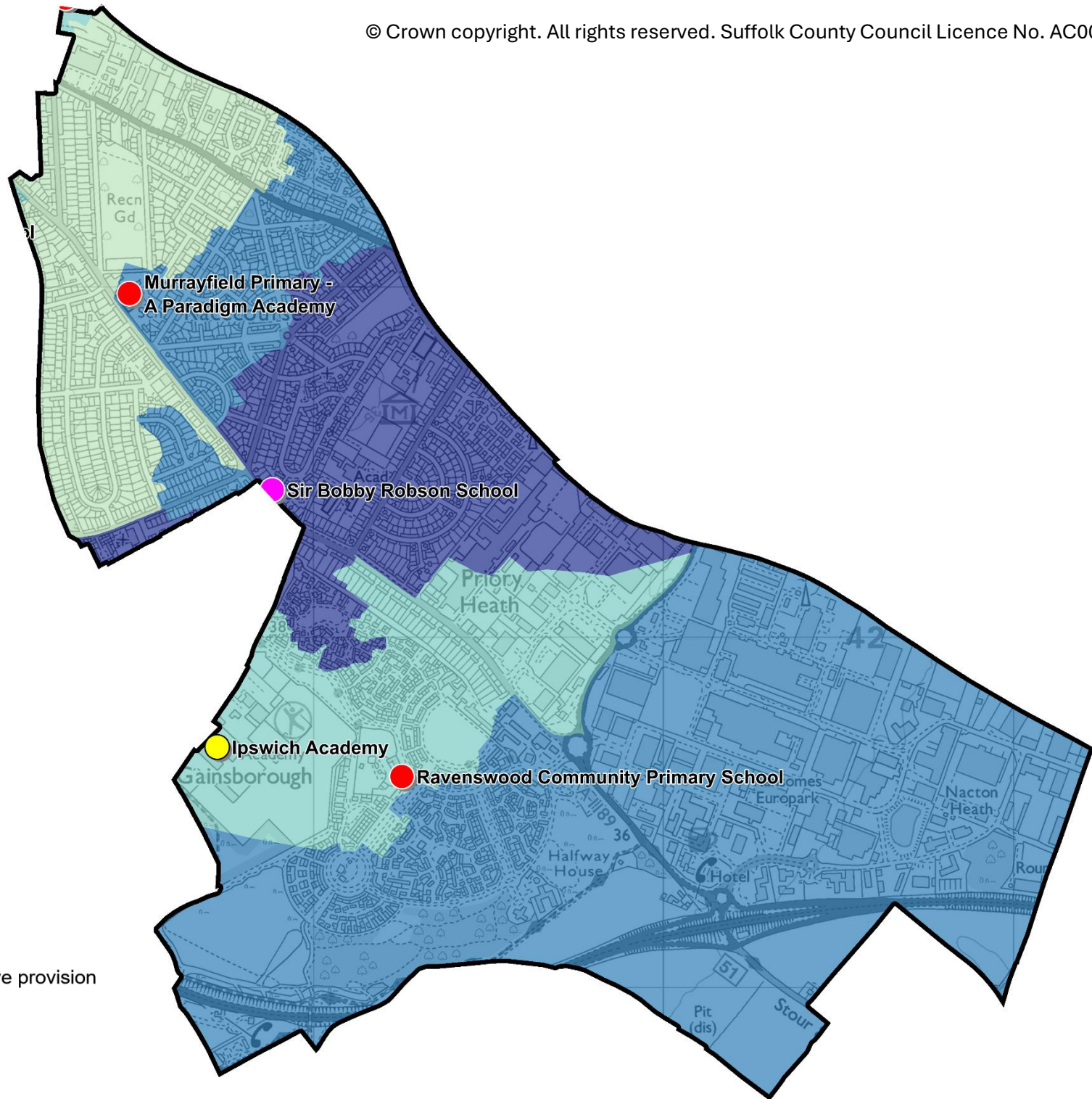
The IMD combines a number of indicators, chosen to cover a range of economic, social and housing issues, into a single deprivation score for each small area in England. This allows each area to be ranked relative to one another according to their level of deprivation. Small areas (Lower Super Output Areas, average population 1,700) are most commonly described as being in 1 of 5 quintile bands. The bottom quintile represents the 20% of areas that are the most deprived in England; these are shaded pale yellow on the map. The top quintile represents the least deprived areas in England and is shaded dark blue.

The Index is widely used to analyse patterns of deprivation, identify areas that would benefit from special initiatives or programmes and as a tool to determine eligibility for specific funding streams.

The chart below shows the percentage of the population of the division that live in areas ranked among each of the five quintiles of deprivation, alongside the district, county and England comparators.



- Deprivation levels in Priory Heath are relatively high but also very varied, with four of the quintiles of deprivation represented in the division.
- Just under a third of the population of the division live in areas that are ranked among the second most deprived 20% of areas in England, with 30% of residents living in neighbourhoods among the most deprived quintile, 28% in the second least deprived quintile and the remaining 10% of the division ranked in the middle quintile.
- See the map overleaf for the distribution of IMD 2025 results across the division.



IMD 2025 quintile

- Least deprived 20%
- Next least deprived 20%
- Mid 20%
- Next most deprived 20%
- Most deprived 20%

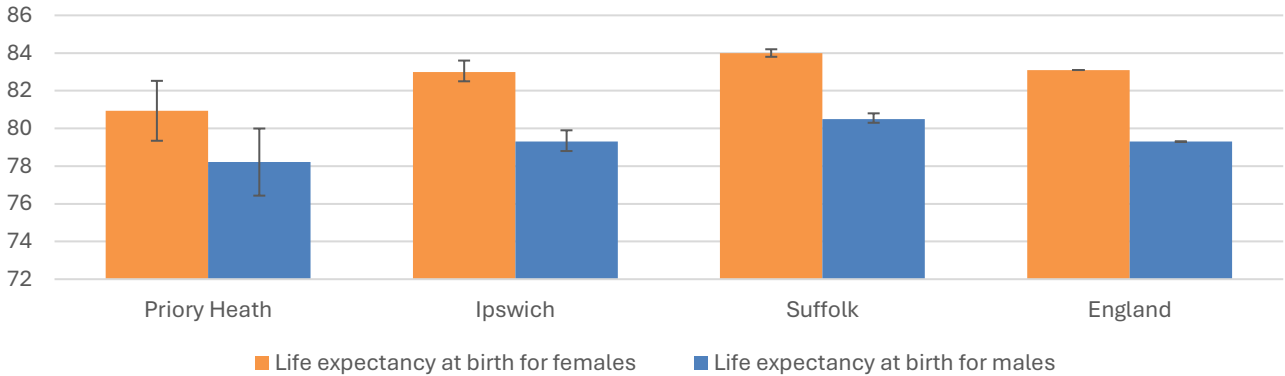
School Phase

- Primary
- Secondary
- Special
- Pupil referral unit/Alternative provision
- Nursery

Health

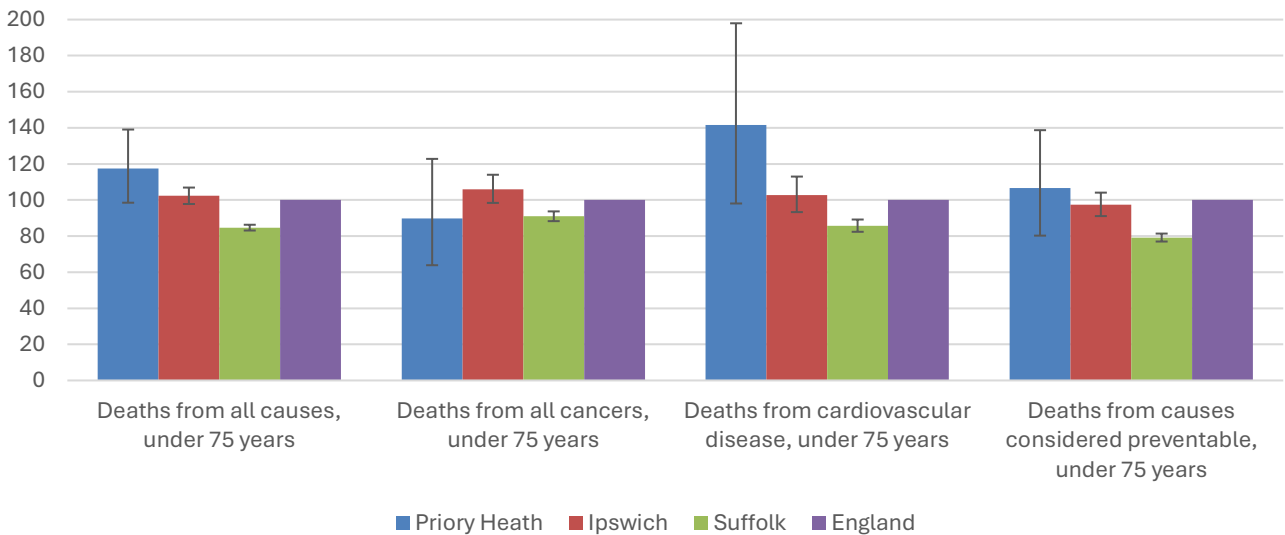
The local data used here is based on relatively small numbers. The confidence limits provide an indication of the reliability of the data. The 95% confidence intervals utilised on the chart provide a range within which there is 95% chance of the true result lying.

Life expectancy at birth



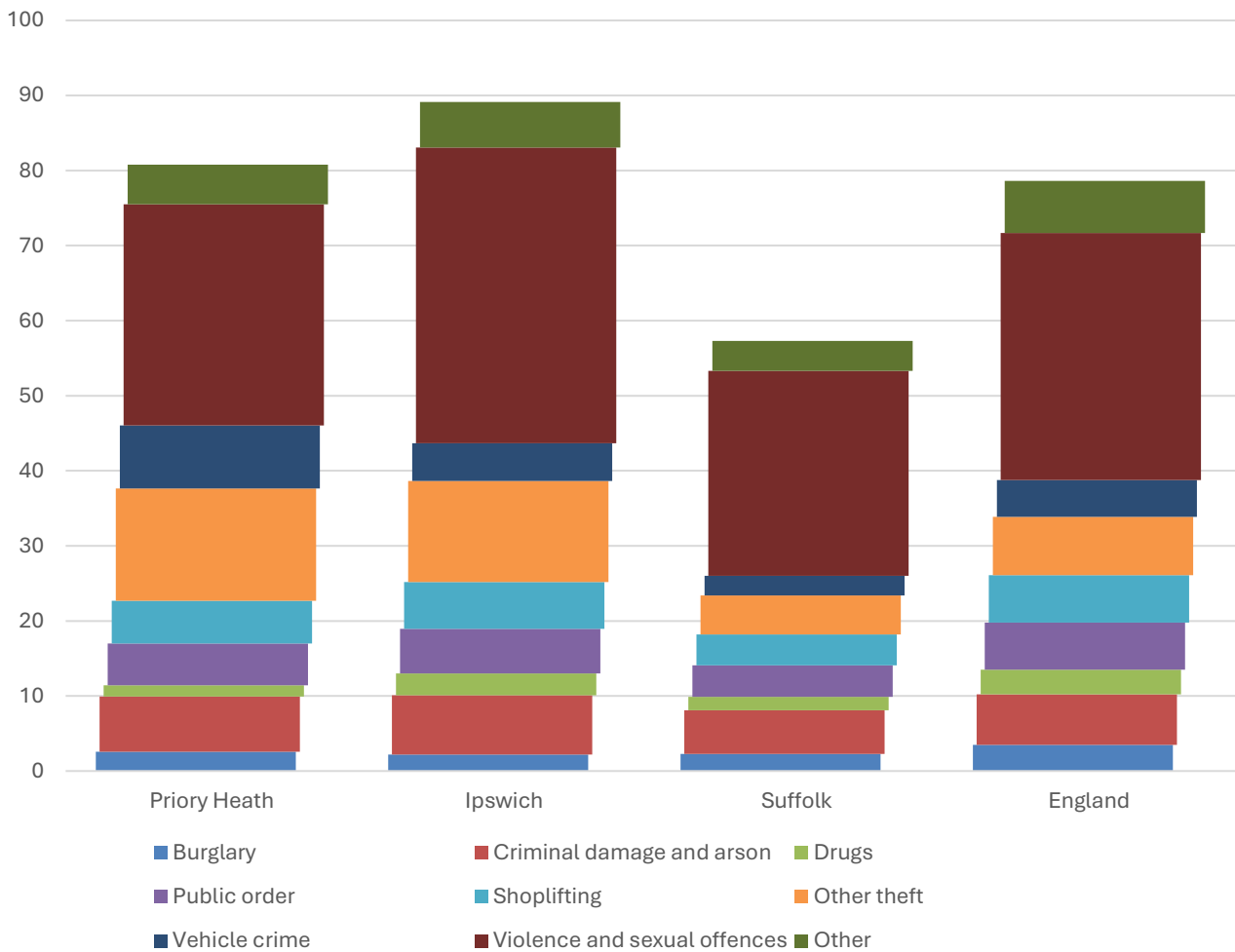
- The latest life expectancy at birth estimates for Priory Heath are 80.9 for females (the England figure is 83.1), and 78.2 for males (compared to 79.3 nationally).
- Life expectancy at birth for females is statistically significantly lower than the England figure, while for males it is statistically similar.

Deaths, under 75 years, standardised mortality ratio



- Estimated standardised mortality ratios for early deaths from all causes, cardiovascular disease and causes considered preventable in Priory Heath are above 100, indicating that deaths in under 75s due to these causes are higher than in England. The SMR for deaths from all cancers is below 100.
- Confidence intervals around these estimates are wide for local data, and early deaths from all causes shown here are statistically similar in the division to Ipswich, Suffolk, and England.
- The standardised mortality ratio data shown here means that for every 100 early deaths from all causes across England as a whole, there are an estimated 117 comparable deaths in Priory Heath.

Crime & Community Safety



- Crime levels in Priory Heath are relatively high compared to the county average, but slightly below the Ipswich Borough rate.
- In the year to the end of January 2026, there were 81 recorded crimes per 1,000 residents in the division, compared to 89 in Ipswich, and 57 countywide.
- Almost all types of crime occur at a lower rate in the division than the county average, with the exception of drug offences.
- The most common type of crime recorded during this period was violence and sexual offences, which accounted for more than a third of all recorded crimes in the division.

Data sources

Category	Indicator	Source
Demographic Profile	Quinary population table 2024	ONS 2024 mid-year population estimates
	Population pyramid 2024	ONS 2024 mid-year population estimates
	Ethnicity 2021	ONS 2021 Census
Economy	Employment by broad industrial sector 2024	ONS Business Register and Employment Survey via NOMIS
Labour market	Claimant count: The number of people claiming Jobseeker's Allowance plus those who claim Universal Credit who are out of work (% 16-64 population) January 2021-February 2026	DWP via NOMIS
Education	School information and attainment 2023-2025	Suffolk County Council CYP iHub
	% 16-17-year-olds NEET (Not in Employment, Education or Training) March 2021 to February 2026	Suffolk County Council CYP iHub via the Suffolk Observatory
Deprivation	Index of Multiple Deprivation 2025	Ministry of Housing, Communities and Local Government
Health	Life expectancy at birth 2016-2020 (2018-2020 for comparator areas)	Office for Health Improvement and Disparities
Health	Standardised mortality ratio for deaths from all causes, cancer, cardiovascular disease, and from causes considered preventable (under 75 years), 2016-2020 (2019-2023 for comparator areas). The standardised mortality ratio is the ratio of observed deaths in the study group to expected deaths in the general population	Office for Health Improvement and Disparities
Community Safety	Recorded crime rate per 1,000 resident population February 2025 to January 2026	Data.police.uk via the Suffolk Observatory

For more data and information about Priory Heath Electoral Division, see the Suffolk Observatory www.suffolkobservatory.info

