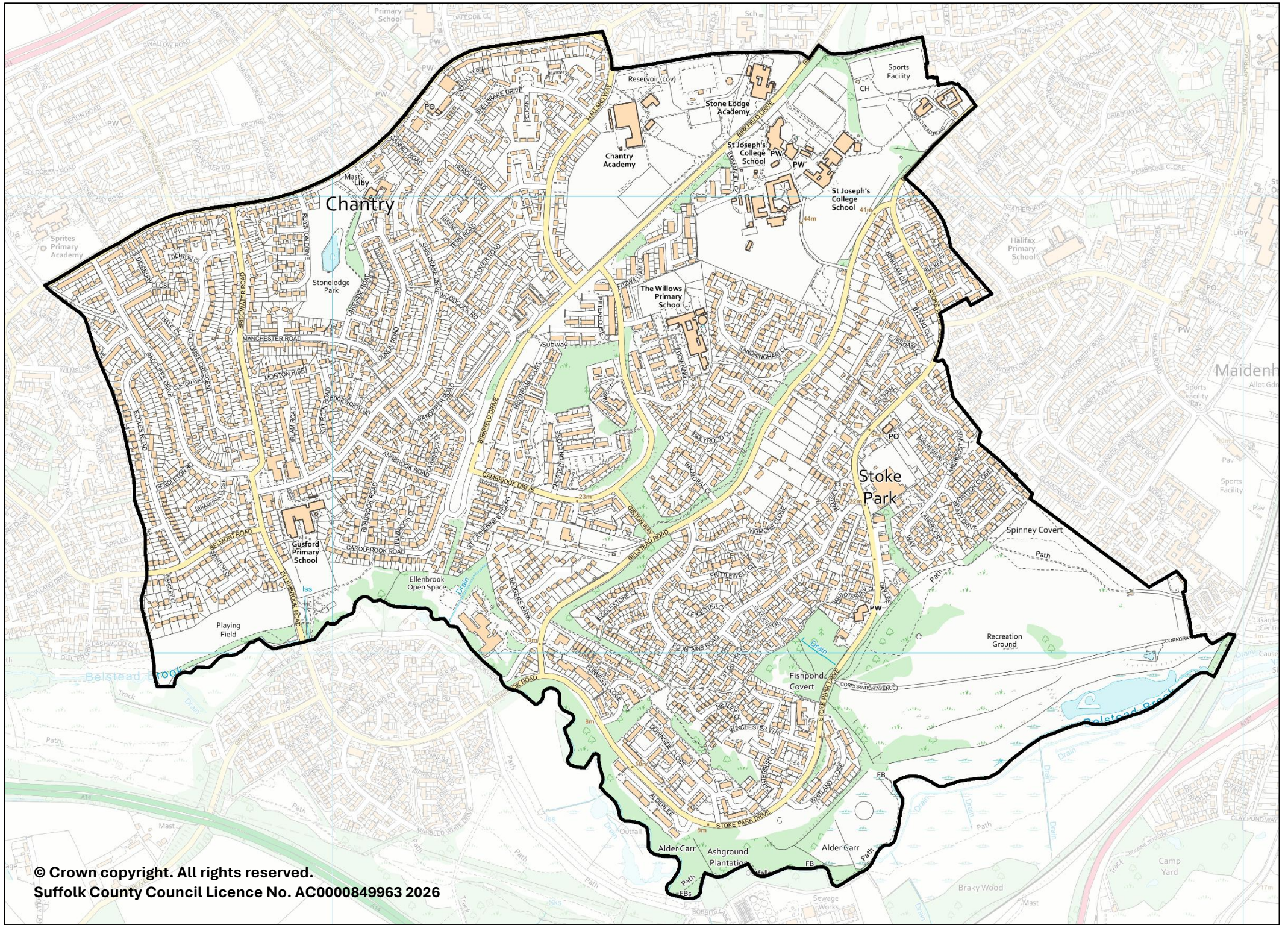


Belstead Hills

County Electoral Division profile
May 2026

This division comprises parts of Gipping, Sprites, and Stoke Park Wards





Chantry

Stoke Park

Contents

- Demographic Profile: Age & Ethnicity
- Economy and Labour Market
- Schools & NEET
- Index of Multiple Deprivation
- Health
- Crime & Community Safety
- Additional Information
- Data Sources

Electoral Division Profiles: an introduction

These profiles have been produced to support elected members, constituents and other interested parties in understanding the demographic, economic, social and educational profile of their neighbourhoods. We have used the latest data available at the time of publication.

Much more data is available from national and local sources than is captured here, but it is hoped that the profile will be a useful starting point for discussion, where local knowledge and experience can be used to flesh out and illuminate the information presented here.

The profile can be used to help look at some fundamental questions e.g.

- Does the age profile of the population match or differ from the national profile?
- Is there evidence of the ageing profile of the county in all the wards in the Division or just some?
- How diverse is the community in terms of ethnicity?
- What is the impact of deprivation on families and residents?
- Does there seem to be a link between deprivation and school performance?
- What is the breakdown of employment sectors in the area?
- Is it a relatively healthy area compared to the rest of the district or county?
- What sort of crime is prevalent in the community?

A vast amount of additional data is available on the **Suffolk Observatory**

www.suffolkobservatory.info

The Suffolk Observatory is a free online resource that contains all Suffolk's vital statistics; it is the one-stop-shop for information and intelligence about Suffolk. Through data, reports and maps, the Suffolk Observatory provides a comprehensive picture of the County. It is a great source for useful facts and figures that can be used for writing reports and presentations, informing strategic and business planning, preparing funding applications or supporting academic research. Data is presented around the key themes of population, children and young people, health and social care, housing, crime and community safety, deprivation, economy and employment and environment. All areas of the county are covered, right down to district, electoral division, ward and parish level, with information easily accessible in a variety of formats. You can also build your own reports for custom areas.

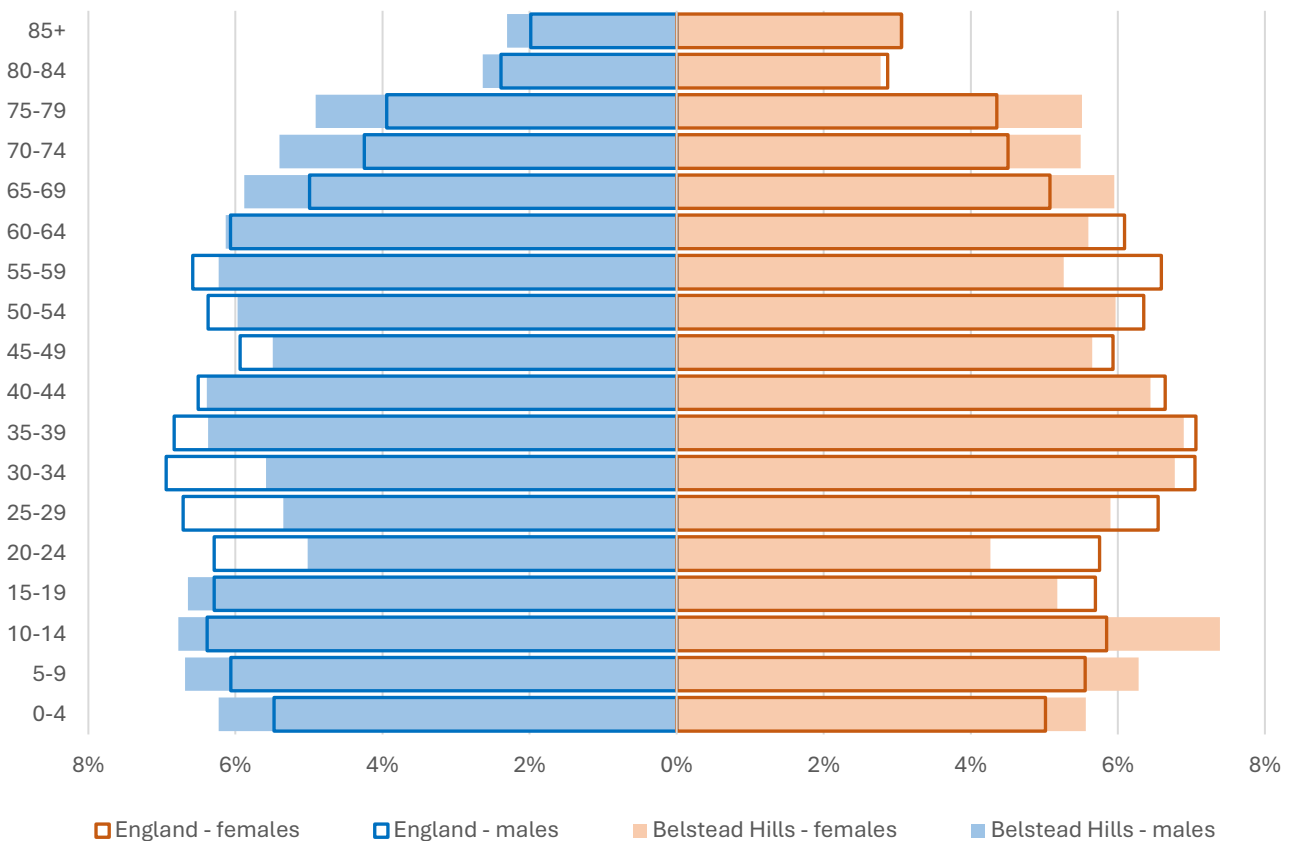
Technical Notes:

1. Where electoral divisions do not exactly match the boundaries at which the data is available (e.g. ward, Output Area or Lower Super Output Area), we have adopted a "best-fit" approach to produce a dataset.
2. District, county and national level data is provided where possible to provide a context for comparisons.

Demographic Profile - Age

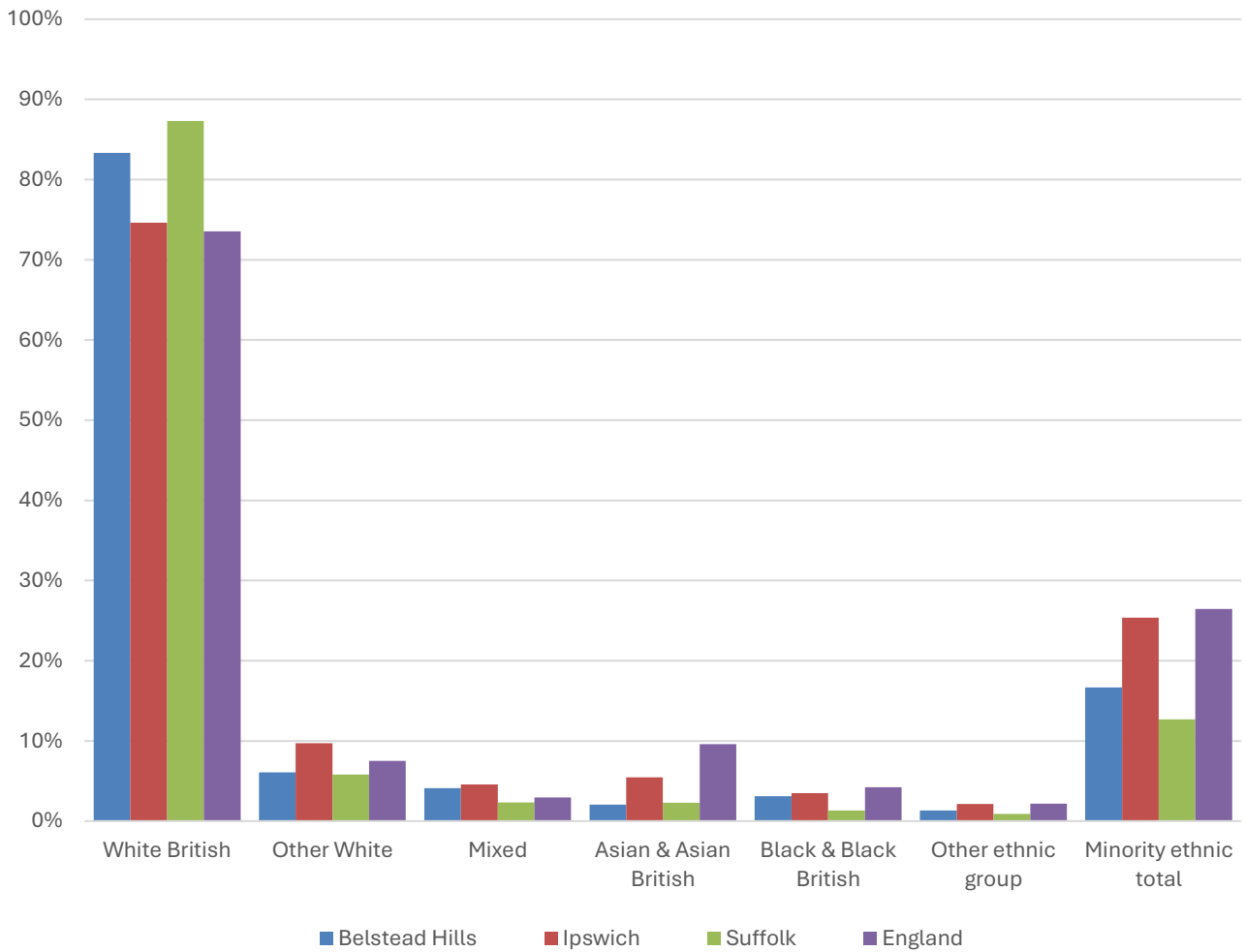
In mid-2024, the estimated population of Belstead Hills stood at 11,158, a decrease of 1.9% over the past decade. The age structure of the component wards and the division as a whole is set out below.

	Belstead Hills Division	Stoke Park Ward	Sprites Ward
All Ages	11,158	7,077	4,081
0-4	657	444	213
5-9	723	496	227
10-14	791	502	289
15-19	658	452	206
20-24	517	351	166
25-29	628	432	196
30-34	691	465	226
35-39	741	463	278
40-44	716	432	284
45-49	622	371	251
50-54	666	426	240
55-59	640	361	279
60-64	654	386	268
65-69	660	415	245
70-74	608	381	227
75-79	582	369	213
80-84	302	162	140
85+	302	169	133



- The age pyramid for Belstead Hills is broadly similar to England as a whole.
- The most common age group in the division is 10-14-year-olds (7.1% of the local population), followed by 35-39-year-olds (6.6%), and 5-9-year-olds (6.5%).
- Just over a fifth (22%) of the population of Belstead Hills is of retirement age.
- There is a higher-than-average proportion of children and young people, particularly aged 10-14, and a lower-than-average proportion of young adults aged 20-34.

Demographic Profile - Ethnicity

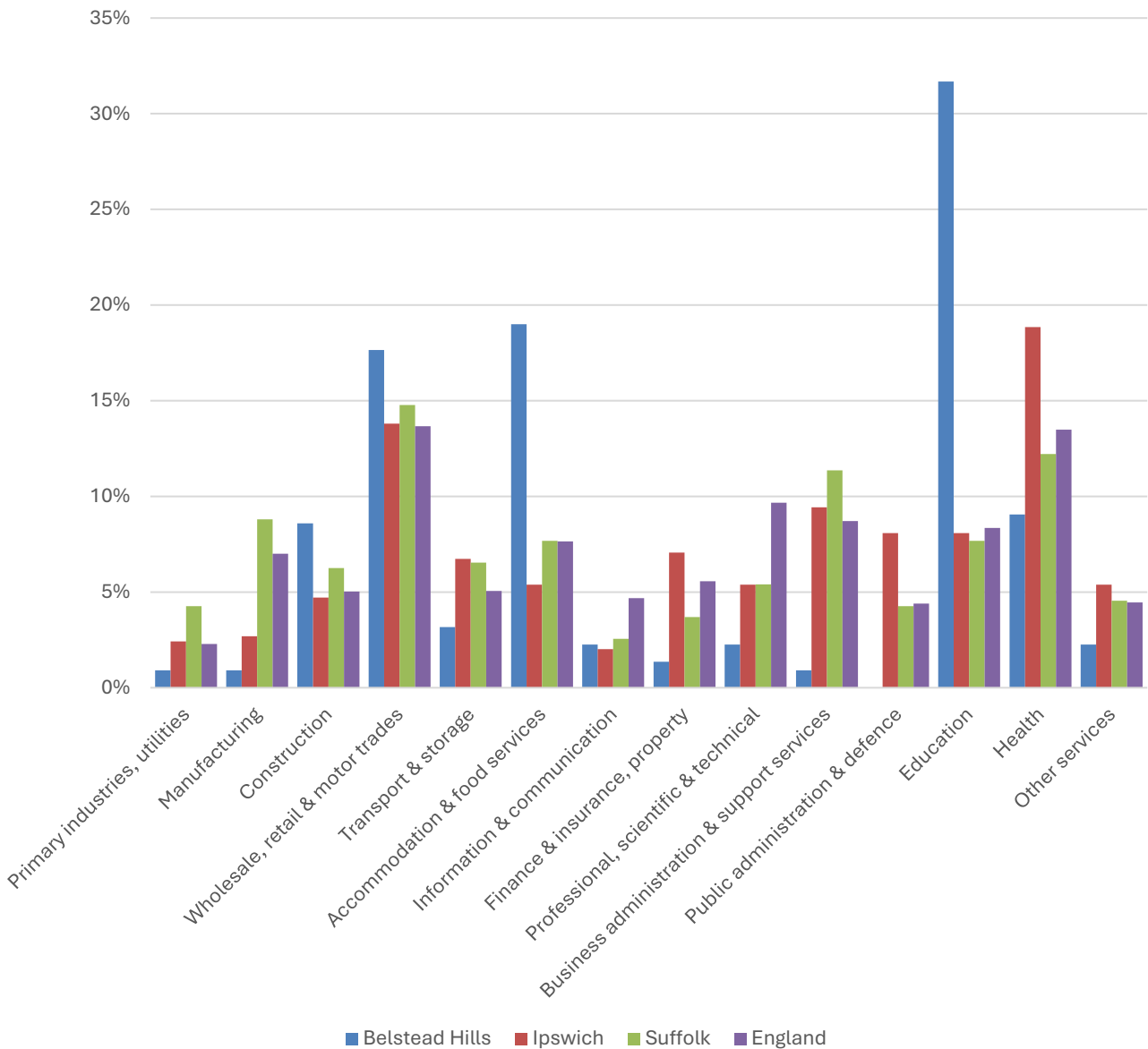


- According to the latest data (2021 Census), 83.3% of the population of Belstead Hills is White British.
- There were 1,899 (16.7%) residents from minority ethnic groups in the division, around 1.3 times the proportion in Suffolk overall, and 60% of the England average.
- Belstead Hills is less ethnically diverse than Ipswich as a whole. The division has lower proportions of all minority ethnic groups than the Borough overall.

	All people		White British		Other White		Mixed		Asian and Asian British		Black and Black British		Other Ethnic Group		Total minority ethnic population	
	Count	%	Count	%	Count	%	Count	%	Count	%	Count	%	Count	%	Count	%
Belstead Hills	11,385		9,486	83.3	692	6.1	468	4.1	234	2.1	354	3.1	151	1.3	1,899	16.7
Ipswich	139,643		104,208	74.6	13,549	9.7	6,409	4.6	7,611	5.5	4,882	3.5	2,984	2.1	35,435	25.4
Suffolk	760,687		664,205	87.3	44,066	5.8	17,807	2.3	17,483	2.3	10,168	1.3	6,958	0.9	96,482	12.7
England				73.5		7.5		3.0		9.6		4.2		2.2		26.5

Economy

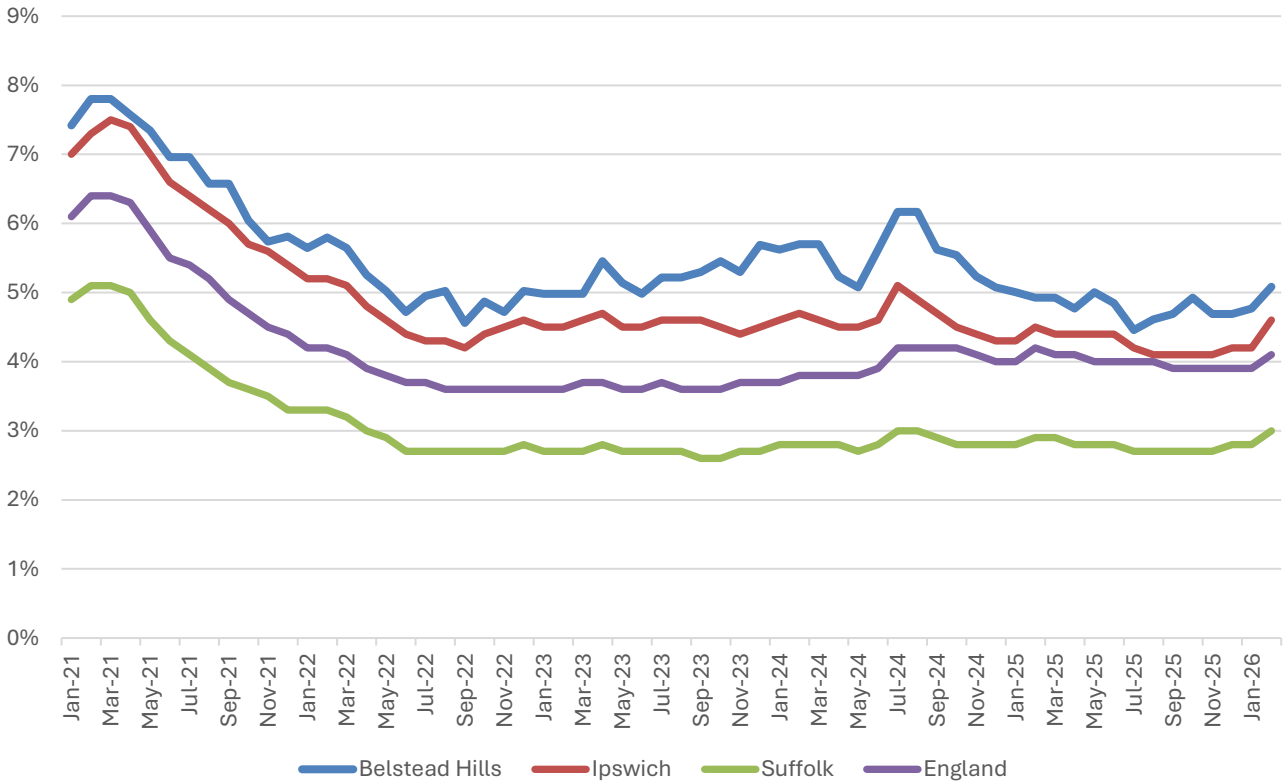
There are around 1,100 people employed in Belstead Hills.



- Education is by far the most important sector in Belstead Hills in terms of employment, providing almost a third of jobs in the division.
- Accommodation and food services (19%) also provides a large proportion of local jobs, around three times the relative size compared to Suffolk overall.
- Wholesale, retail and motor trades is the third largest sector in Belstead Hills, and it also accounts for a slightly larger proportion of jobs than it does in Ipswich, Suffolk, or England.

Labour Market

Out-of-work benefit claimant rate



- In common with Ipswich, Suffolk and England as a whole, Belstead Hills saw a steady decline in the proportion of the working age population claiming out-of-work benefits during 2021 and into 2022 following a peak during the COVID-19 pandemic.
- Since then, the claimant rate reached a peak of 6.2% in July/August 2024, but has otherwise been fairly stable around 5%.
- In February 2026 (the latest available data), 5.1% of 16-64-year-olds were claiming out-of-work benefits in the division.
- The claimant rate in the division is consistently higher than the district, county and national benchmarks.

Schools

School Information

Schools in the Division

Name	Phase	Academy Status	No. pupils	Average cohort size at:			
				Foundation Stage (age 4-7)	KS2 (age 7-11)	KS4 (age 14-16)	KS5 (age 16-18)
Gusford Community Primary School	Primary	AS	518	57	84		
The Willows Primary School	Primary	AC	259	38	49		
Chantry Academy	Secondary	AS	1,006			175	
Stone Lodge Academy	Special	AS	175		9	31	

Academy Status key: AS = Academy Sponsored, AC = Academy Converter, LA = LA Maintained, F = Free

Ofsted information

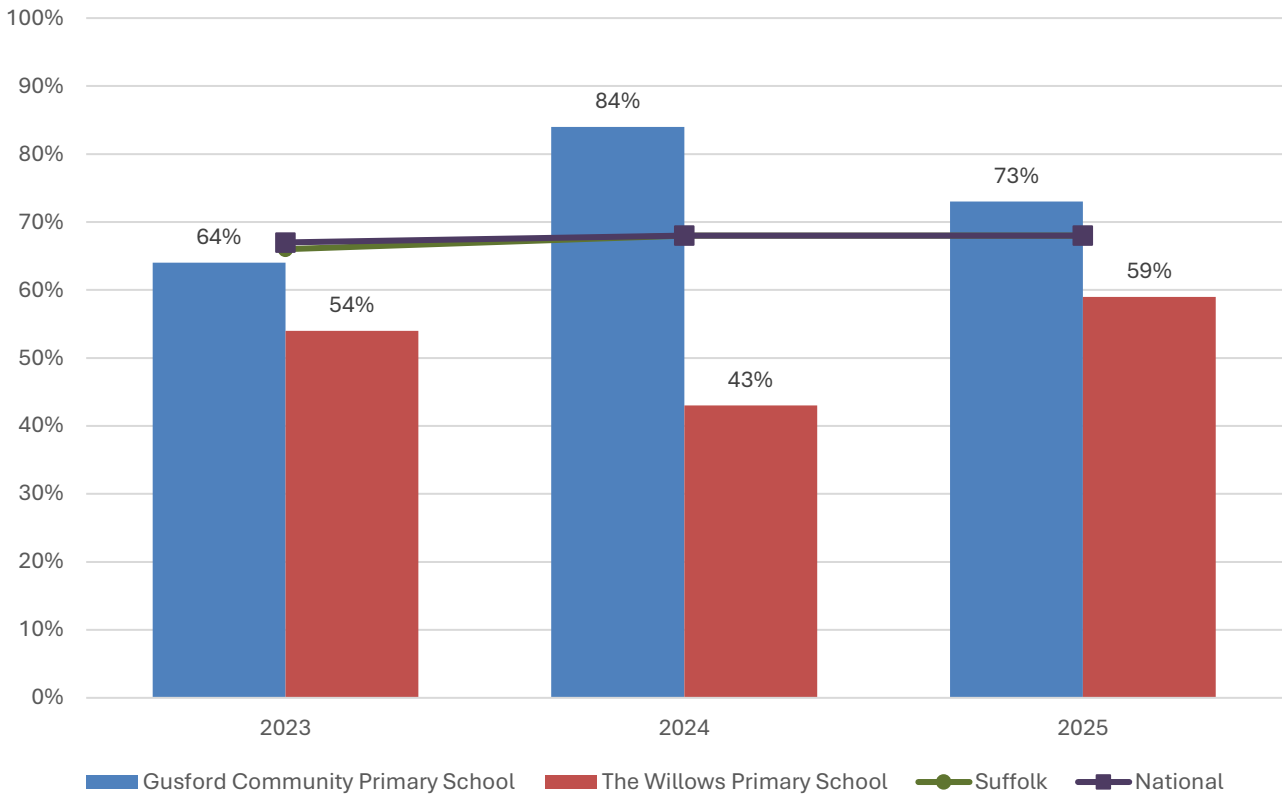
Name	Overall effectiveness	Effectiveness of leadership and management	Behaviour and attitudes	Personal development	Early years provision (if applicable)	Quality of education	Last inspection date
Gusford Community Primary School	5	2	2	1	2	2	12/11/2024
The Willows Primary School	3	3	3	2	2	3	13/02/2024
Chantry Academy	2	2	2	2	9	2	30/04/2024
Stone Lodge Academy	5	4	4	3	9	4	28/01/2025

Code	Judgement	Code	Judgement
0	Insufficient evidence	SM	Special measures
1	Outstanding	8	Does not apply
2	Good	9	No judgement
3	Requires improvement	Null	No data available
4	Inadequate	Not judged	Not judged
SWK	Serious weaknesses	5	No overall grade

School Attainment

Foundation Stage Profile (reception)

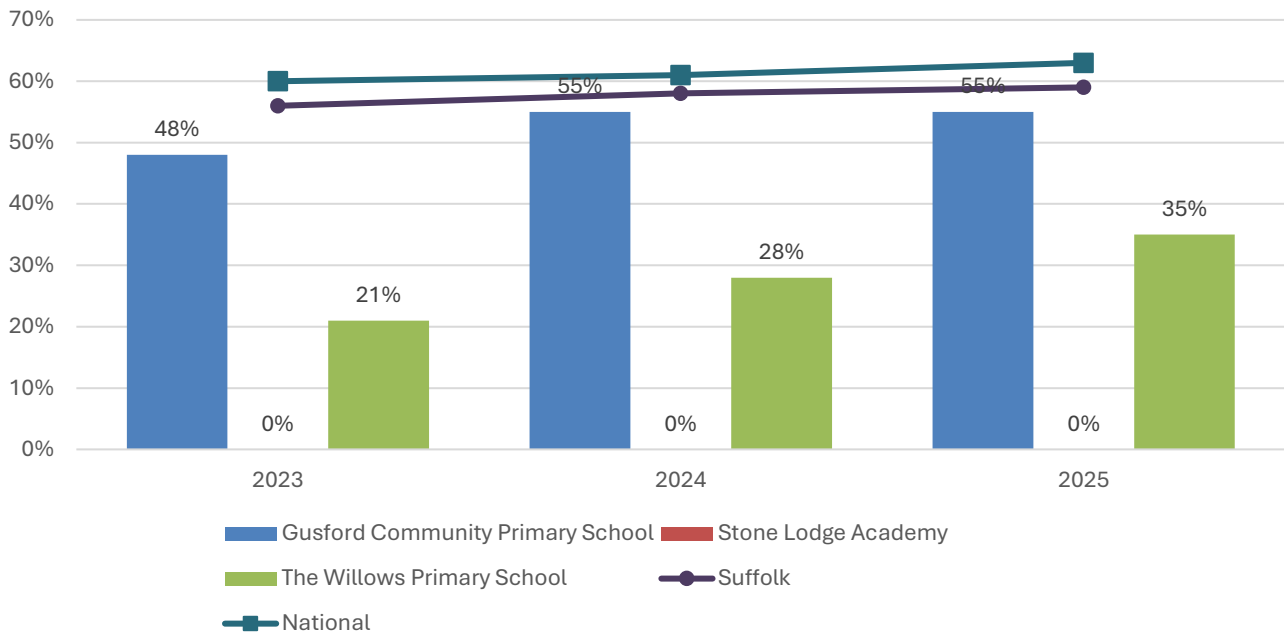
% pupils achieving Good Level of Development (GLD)



- In 2025, the percentage of pupils to achieve a Good Level of Development (GLD) at Foundation Stage (FS) was 73% at Gusford Community Primary School, 59% at The Willows Primary School and 68% nationally.
- FS attainment at Gusford Community Primary was also above the national benchmark in 2024, but attainment at both schools was short of this level in 2023.
- The Willows Primary School has recorded FS attainment below the national average throughout the last three years.

Key Stage 2 (age 11)

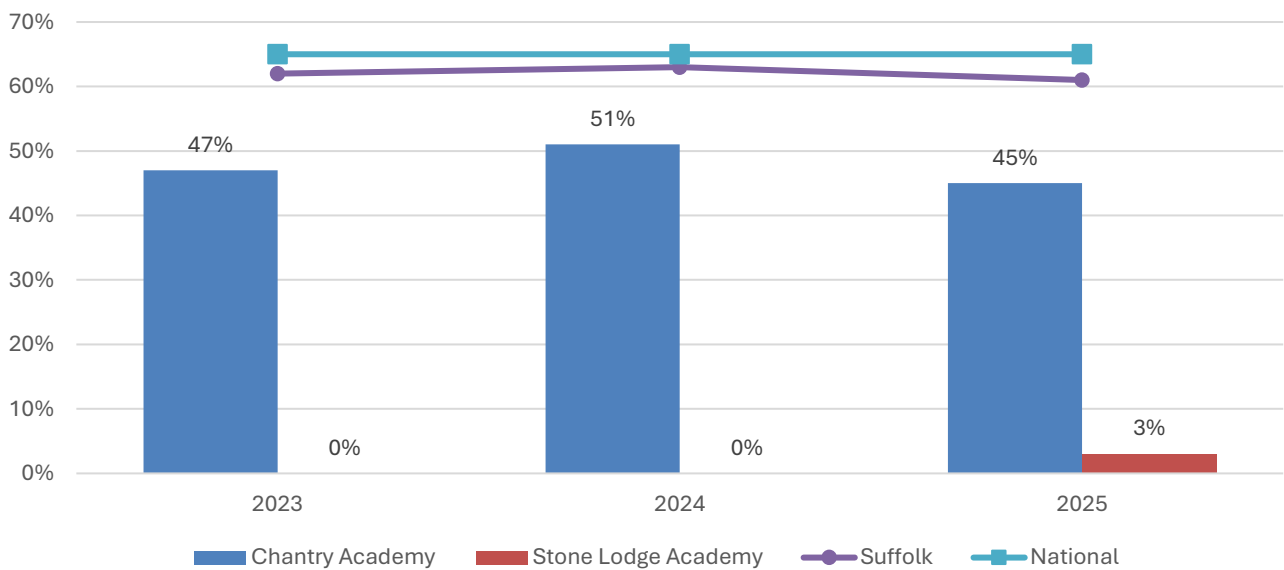
% pupils achieving the Expected Level or better in Reading, Writing and Mathematics



- In 2025, the percentage of pupils to achieve the expected level or better in reading, writing and mathematics at Key Stage 2 was 55% at Gusford Community Primary School, 35% at The Willows Primary School and 63% nationally.
- Key Stage 2 attainment at the schools in Belstead Hills division was consistently below the county and national benchmarks throughout the last three years.

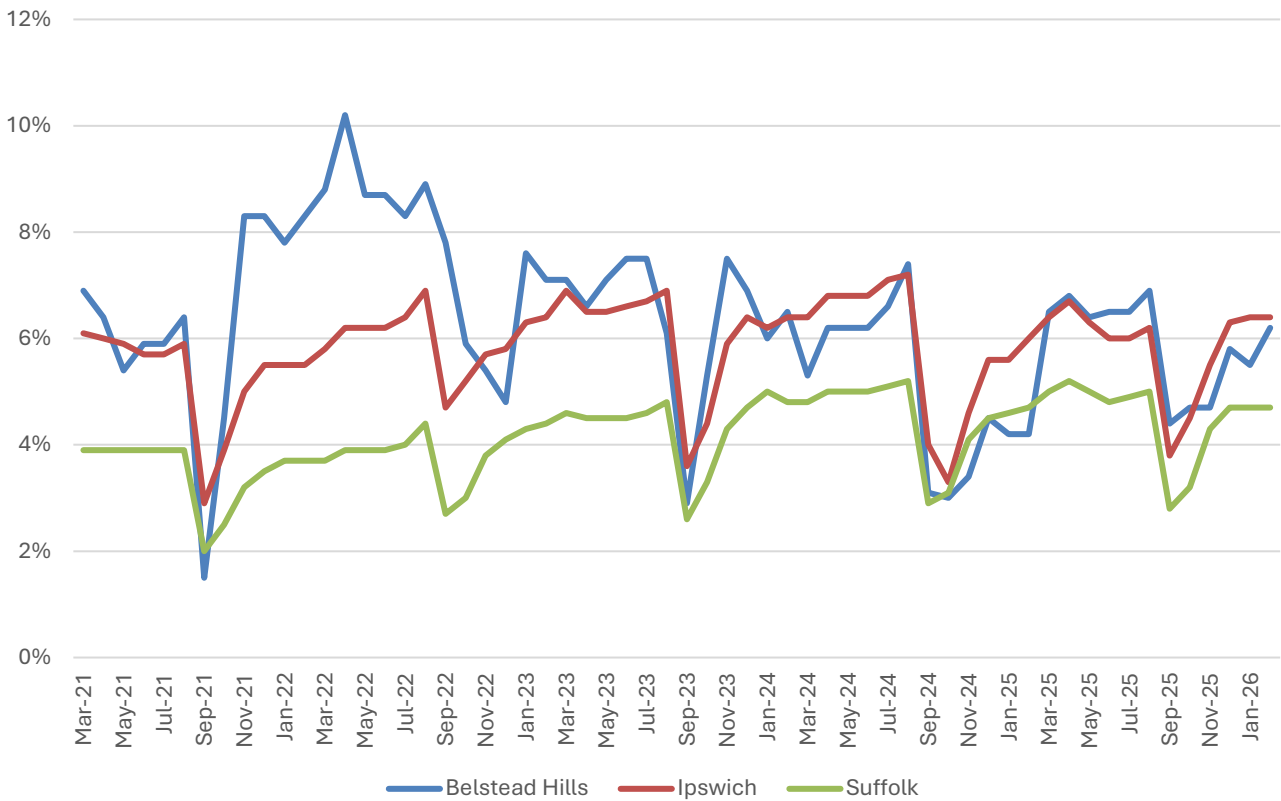
Key Stage 4 (GCSE) (age 16)

% pupils achieving level 4-9 in English and Mathematics



- Key Stage 4 attainment at Chantry Academy has remained consistently around 15 to 20 percentage points below the national benchmark over the last three years.

NEET % (Not in Education, Employment or Training)



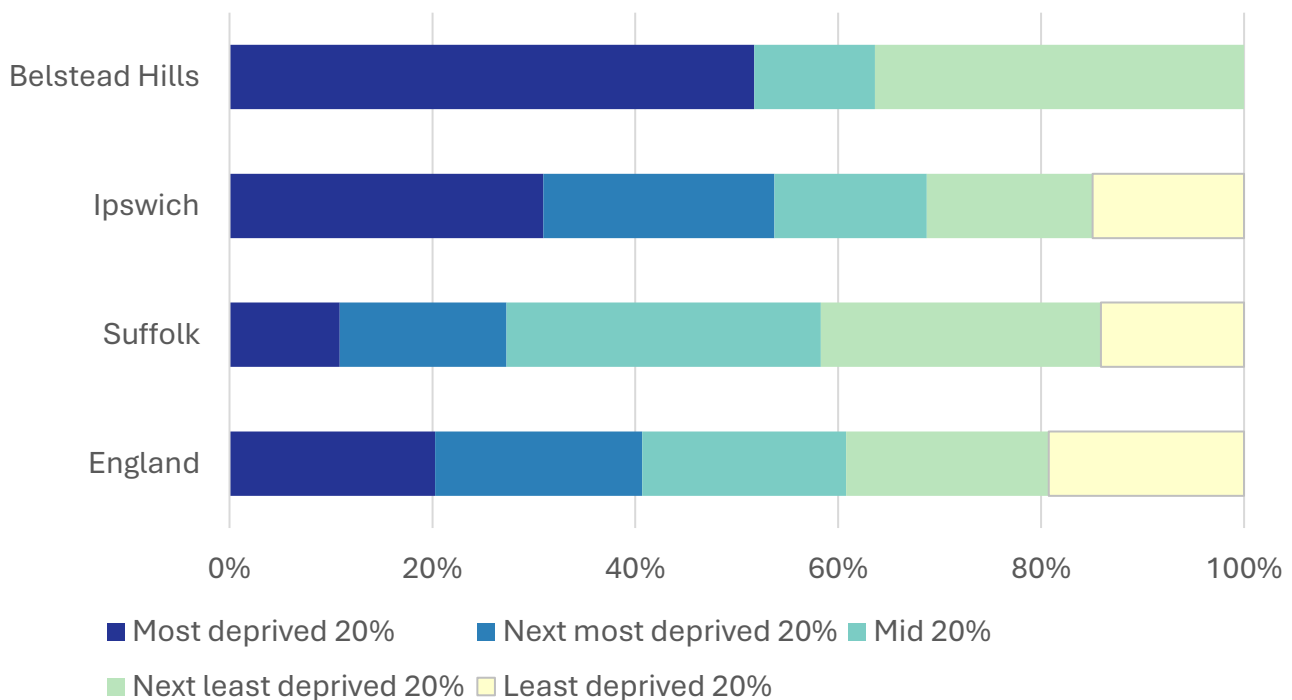
- In February 2026, 6.2% of 16-17-year-olds in Belstead Hills were classified as NEET (not in education, employment or training).
- NEET levels fluctuate considerably according to the time of year and due to small numbers of 16-17-year-olds in the division, typically being at their lowest at the beginning of a new school year.
- In Belstead Hills, the proportion of children who are NEET is generally similar to or above the district and county figures.

Index of Multiple Deprivation (IMD) 2025 (see map overleaf)

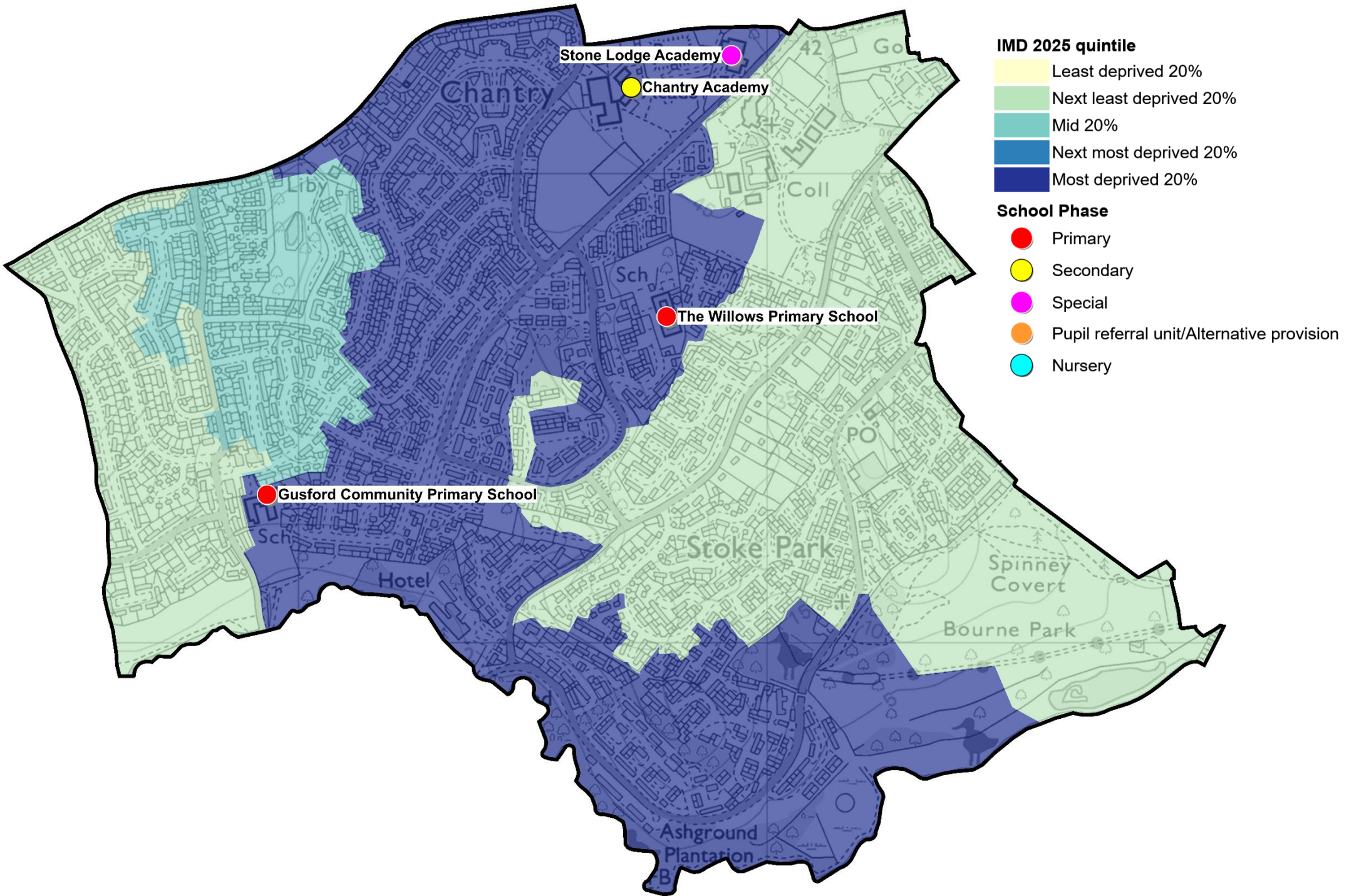
The IMD combines a number of indicators, chosen to cover a range of economic, social and housing issues, into a single deprivation score for each small area in England. This allows each area to be ranked relative to one another according to their level of deprivation. Small areas (Lower Super Output Areas, average population 1,700) are most commonly described as being in 1 of 5 quintile bands. The bottom quintile represents the 20% of areas that are the most deprived in England; these are shaded pale yellow on the map. The top quintile represents the least deprived areas in England and is shaded dark blue.

The Index is widely used to analyse patterns of deprivation, identify areas that would benefit from special initiatives or programmes and as a tool to determine eligibility for specific funding streams.

The chart below shows the percentage of the population of the division that live in areas ranked among each of the five quintiles of deprivation, alongside the district, county and England comparators.



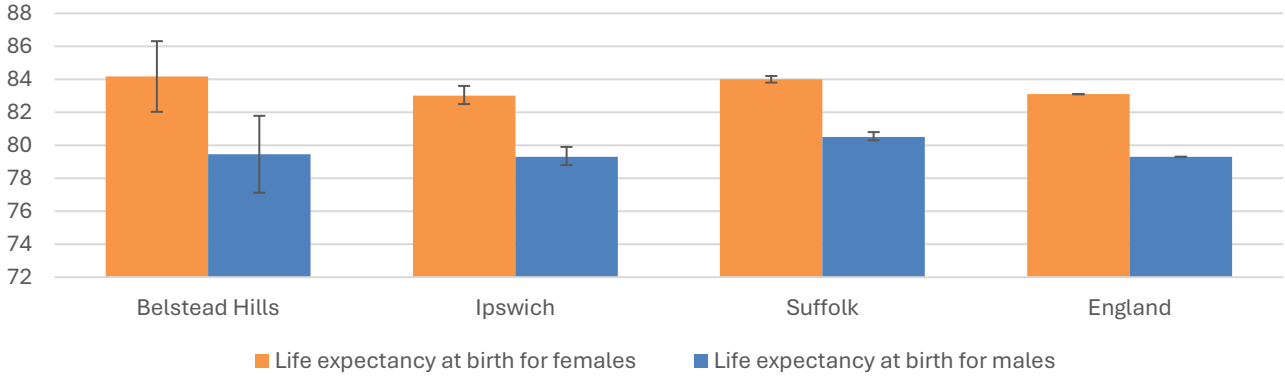
- Deprivation levels in Belstead Hills are quite varied, with three of the quintiles of deprivation represented in the division.
- Just over half (52%) of the population of the division live in areas that are ranked among the most deprived quintile of deprivation, with 36% of residents living in neighbourhoods among the second least deprived quintile, and the remaining 12% of the division ranked in the middle quintile.
- See the map overleaf for the distribution of IMD 2025 results across the division.



Health

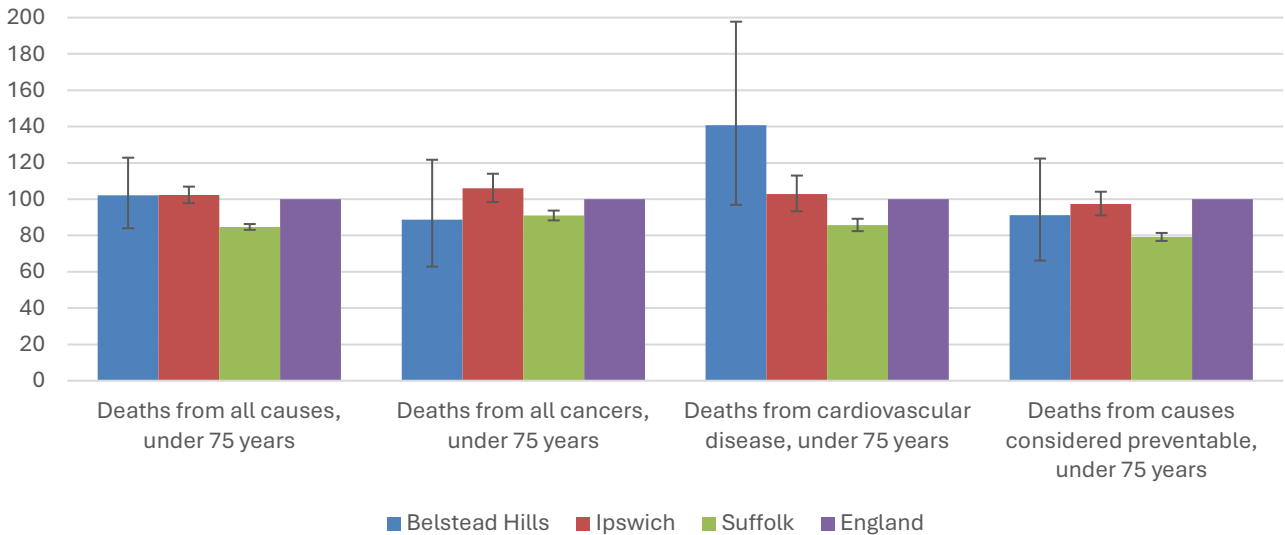
The local data used here is based on relatively small numbers. The confidence limits provide an indication of the reliability of the data. The 95% confidence intervals utilised on the chart provide a range within which there is 95% chance of the true result lying.

Life expectancy at birth



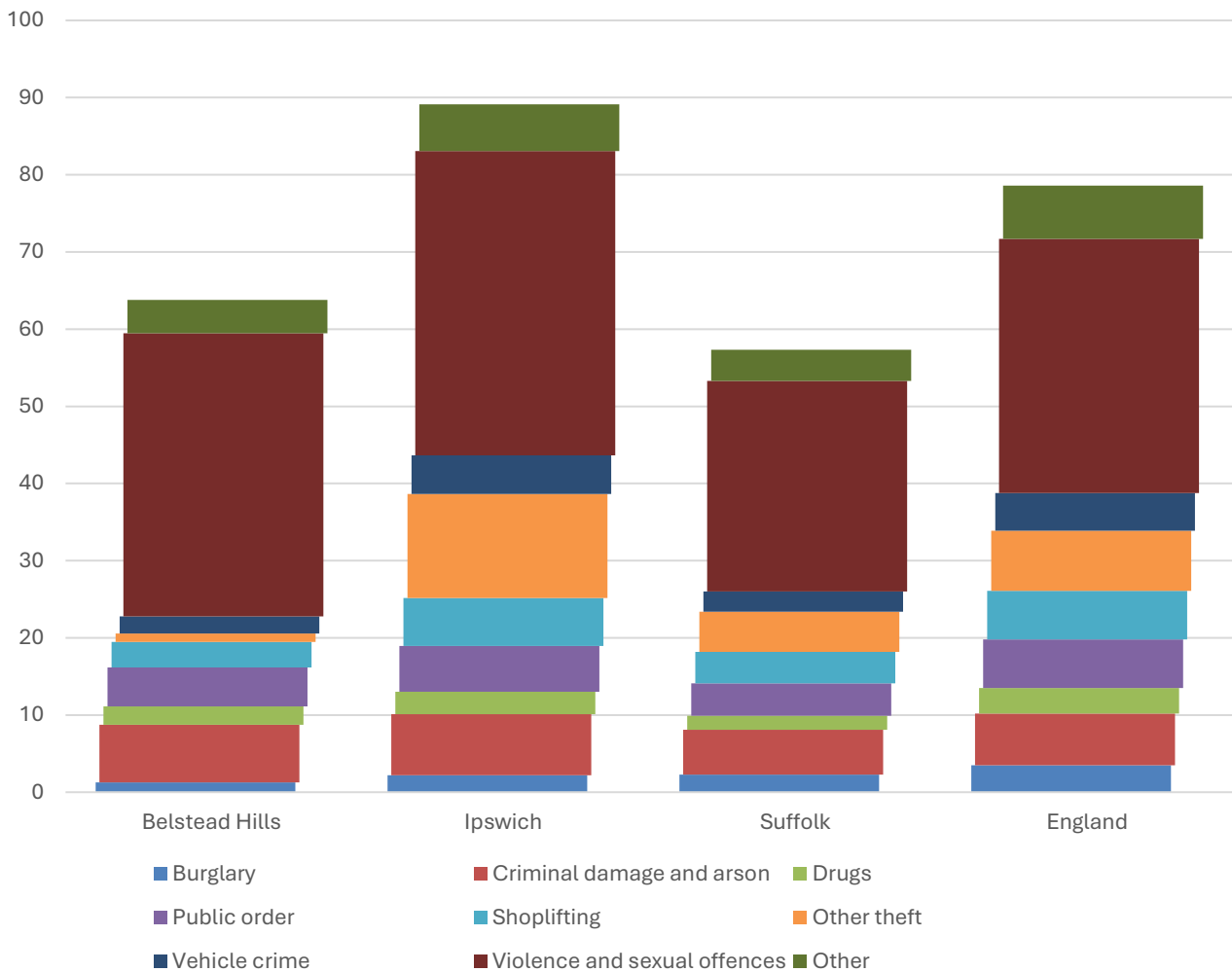
- The latest life expectancy at birth estimates for Belstead Hills are 84.2 for females (the England figure is 83.1), and 79.5 for males (compared to 79.3 nationally).
- Life expectancy for both males and females in the division are statistically similar to the England figures.

Deaths, under 75 years, standardised mortality ratio



- Estimated standardised mortality ratios for early deaths from all cancers and causes considered preventable in Belstead Hills are below 100, indicating that deaths in under 75s due to these causes are lower than in England.
- Confidence intervals around these estimates are wide for local data, and early deaths from all causes shown here are statistically similar in the division to Ipswich, Suffolk, and England.
- The standardised mortality ratio data shown here means that for every 100 early deaths from all causes across England as a whole, there are an estimated 102 comparable deaths in Belstead Hills.

Crime & Community Safety



- Crime levels in Belstead Hills are slightly above the county average but below the rate recorded for Ipswich Borough as a whole.
- In the year to the end of January 2026, there were 64 recorded crimes per 1,000 residents in the division, compared to 89 in Ipswich, and 57 countywide.
- By far the most common type of crime recorded during this period was violence and sexual offences, which accounted for more than half of all recorded crimes in the division.
- There was a relatively low rate of other theft incidents recorded in the division during this period.

Data sources

Category	Indicator	Source
Demographic Profile	Quinary population table 2024	ONS 2024 mid-year population estimates
	Population pyramid 2024	ONS 2024 mid-year population estimates
	Ethnicity 2021	ONS 2021 Census
Economy	Employment by broad industrial sector 2024	ONS Business Register and Employment Survey via NOMIS
Labour market	Claimant count: The number of people claiming Jobseeker's Allowance plus those who claim Universal Credit who are out of work (% 16-64 population) January 2021-February 2026	DWP via NOMIS
Education	School information and attainment 2023-2025	Suffolk County Council CYP iHub
	% 16-17-year-olds NEET (Not in Employment, Education or Training) March 2021 to February 2026	Suffolk County Council CYP iHub via the Suffolk Observatory
Deprivation	Index of Multiple Deprivation 2025	Ministry of Housing, Communities and Local Government
Health	Life expectancy at birth 2016-2020 (2018-2020 for comparator areas)	Office for Health Improvement and Disparities
Health	Standardised mortality ratio for deaths from all causes, cancer, cardiovascular disease, and from causes considered preventable (under 75 years), 2016-2020 (2019-2023 for comparator areas). The standardised mortality ratio is the ratio of observed deaths in the study group to expected deaths in the general population	Office for Health Improvement and Disparities
Community Safety	Recorded crime rate per 1,000 resident population February 2025 to January 2026	Data.police.uk via the Suffolk Observatory

For more data and information about Belstead Hills Electoral Division, see the Suffolk Observatory www.suffolkobservatory.info

