

# Wilford

County Electoral Division profile  
May 2026

This division comprises Deben Ward in its entirety, and parts of Melton, and Rendlesham & Orford Wards





## **Contents**

- Demographic Profile: Age & Ethnicity
- Economy and Labour Market
- Schools & NEET
- Index of Multiple Deprivation
- Health
- Crime & Community Safety
- Additional Information
- Data Sources

# Electoral Division Profiles: an introduction

These profiles have been produced to support elected members, constituents and other interested parties in understanding the demographic, economic, social and educational profile of their neighbourhoods. We have used the latest data available at the time of publication.

Much more data is available from national and local sources than is captured here, but it is hoped that the profile will be a useful starting point for discussion, where local knowledge and experience can be used to flesh out and illuminate the information presented here.

The profile can be used to help look at some fundamental questions e.g.

- Does the age profile of the population match or differ from the national profile?
- Is there evidence of the ageing profile of the county in all the wards in the Division or just some?
- How diverse is the community in terms of ethnicity?
- What is the impact of deprivation on families and residents?
- Does there seem to be a link between deprivation and school performance?
- What is the breakdown of employment sectors in the area?
- Is it a relatively healthy area compared to the rest of the district or county?
- What sort of crime is prevalent in the community?

A vast amount of additional data is available on the **Suffolk Observatory**

[www.suffolkobservatory.info](http://www.suffolkobservatory.info)

The Suffolk Observatory is a free online resource that contains all Suffolk's vital statistics; it is the one-stop-shop for information and intelligence about Suffolk. Through data, reports and maps, the Suffolk Observatory provides a comprehensive picture of the County. It is a great source for useful facts and figures that can be used for writing reports and presentations, informing strategic and business planning, preparing funding applications or supporting academic research. Data is presented around the key themes of population, children and young people, health and social care, housing, crime and community safety, deprivation, economy and employment and environment. All areas of the county are covered, right down to district, electoral division, ward and parish level, with information easily accessible in a variety of formats. You can also build your own reports for custom areas.

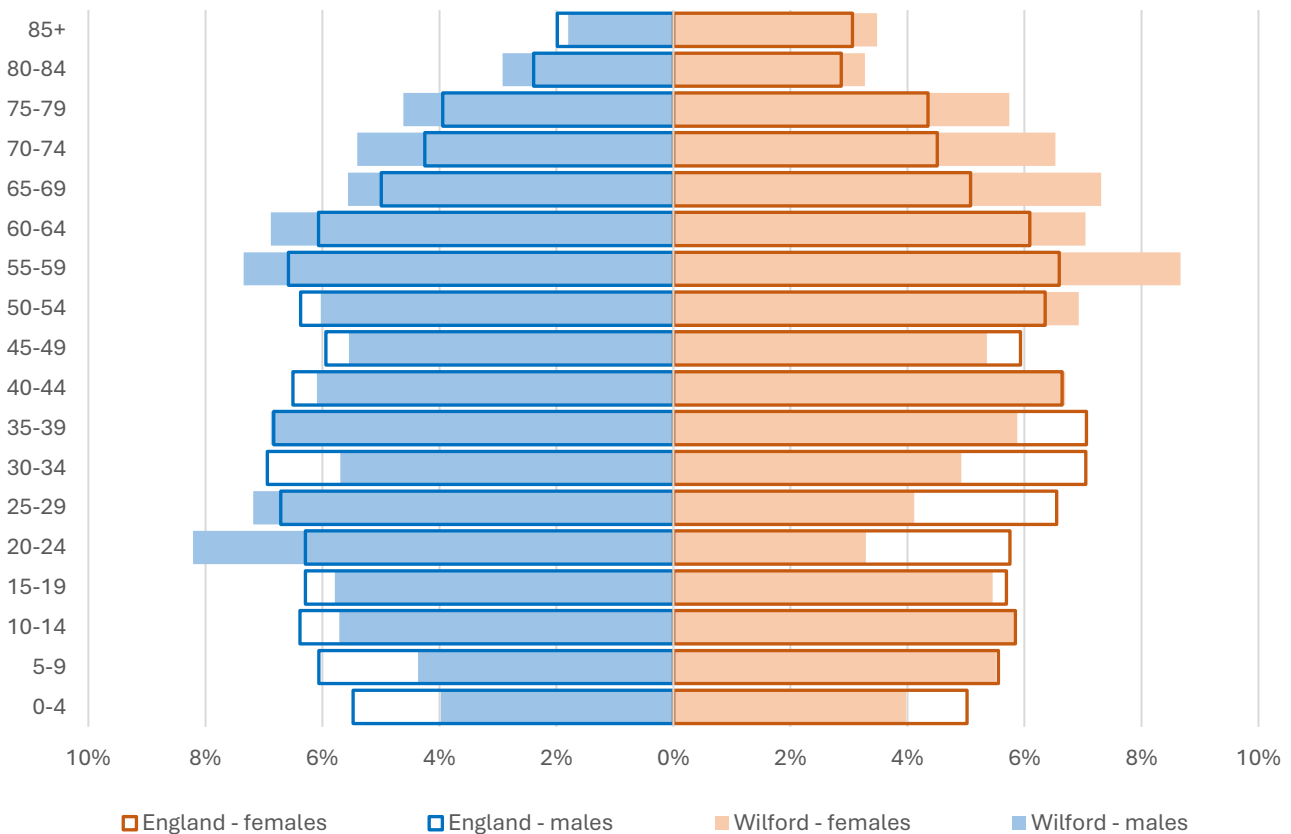
## Technical Notes:

1. Where electoral divisions do not exactly match the boundaries at which the data is available (e.g. ward, Output Area or Lower Super Output Area), we have adopted a "best-fit" approach to produce a dataset.
2. District, county and national level data is provided where possible to provide a context for comparisons.

# Demographic Profile - Age

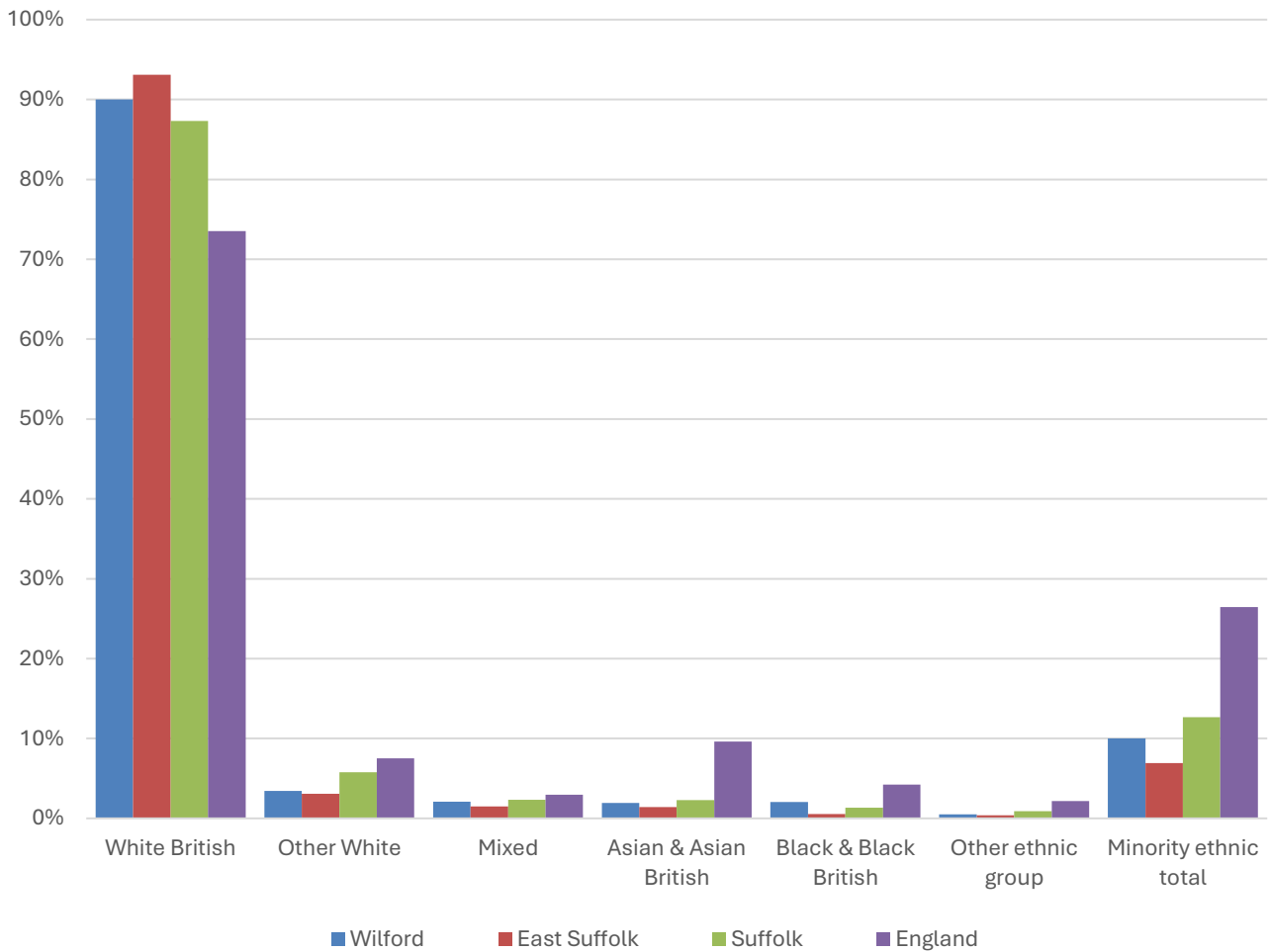
In mid-2024, the estimated population of Wilford stood at 11,461, an increase of 5.7% over the past decade. The age structure of the component wards and the division as a whole is set out below.

	Wilford Division	Deben Ward	Rendlesham & Orford Ward	Melton Ward
<b>All Ages</b>	<b>11,461</b>	6,011	3,221	2,229
<b>0-4</b>	<b>456</b>	200	156	100
<b>5-9</b>	<b>560</b>	248	202	110
<b>10-14</b>	<b>660</b>	274	259	127
<b>15-19</b>	<b>646</b>	292	254	100
<b>20-24</b>	<b>684</b>	483	133	68
<b>25-29</b>	<b>663</b>	399	130	134
<b>30-34</b>	<b>612</b>	362	143	107
<b>35-39</b>	<b>736</b>	359	242	135
<b>40-44</b>	<b>730</b>	355	240	135
<b>45-49</b>	<b>626</b>	312	196	118
<b>50-54</b>	<b>738</b>	365	246	127
<b>55-59</b>	<b>911</b>	488	262	161
<b>60-64</b>	<b>797</b>	423	166	208
<b>65-69</b>	<b>729</b>	416	150	163
<b>70-74</b>	<b>678</b>	386	152	140
<b>75-79</b>	<b>588</b>	321	118	149
<b>80-84</b>	<b>353</b>	197	82	74
<b>85+</b>	<b>294</b>	131	90	73



- The age pyramid for Wilford division shows a higher proportion of people aged 55 and over than in England as a whole, but the “pinched” or inverted shape of the pyramid is not as pronounced as much of rural Suffolk.
- The most common age group in the division is 55-59-year-olds (8% of the local population), followed by 60-64-year-olds (7%), and 50-54-year-olds (6.4%).
- Just under a quarter of the population of Wilford is of retirement age.
- There is a large proportion of young males aged between 20 and 29 in the division, due to the presence of the Hollesey Bay colony.

# Demographic Profile - Ethnicity

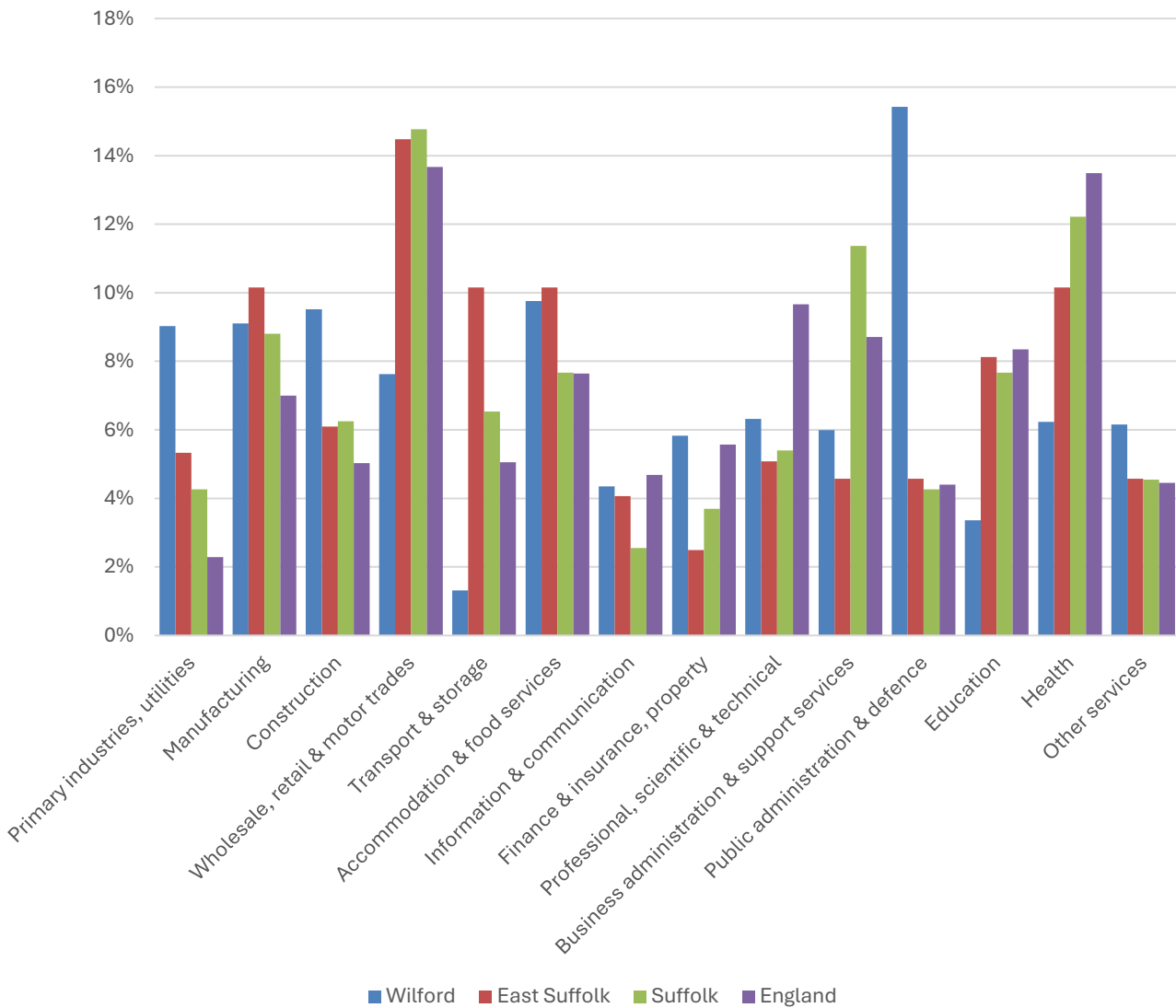


- According to the latest data (2021 Census), 90% of the population of Wilford is White British.
- There were 1,120 (10%) residents from minority ethnic groups in the division, around 80% of the proportion in Suffolk overall, and 40% of the England average.
- Wilford has a more ethnically diverse population compared to East Suffolk district. The Black/Black British/Caribbean/African community in the division in particular is relatively large.

	All people		White British		Other White		Mixed		Asian and Asian British		Black and Black British		Other Ethnic Group		Total minority ethnic population	
	Count	%	Count	%	Count	%	Count	%	Count	%	Count	%	Count	%	Count	%
Wilford	11,192		10,072	90.0	385	3.4	232	2.1	214	1.9	231	2.1	58	0.5	1,120	10.0
Babergh	246,060		229,063	93.1	7,564	3.1	3,707	1.5	3,447	1.4	1,357	0.6	922	0.4	16,997	6.9
Suffolk	760,687		664,205	87.3	44,066	5.8	17,807	2.3	17,483	2.3	10,168	1.3	6,958	0.9	96,482	12.7
England				73.5		7.5		3.0		9.6		4.2		2.2		26.5

# Economy

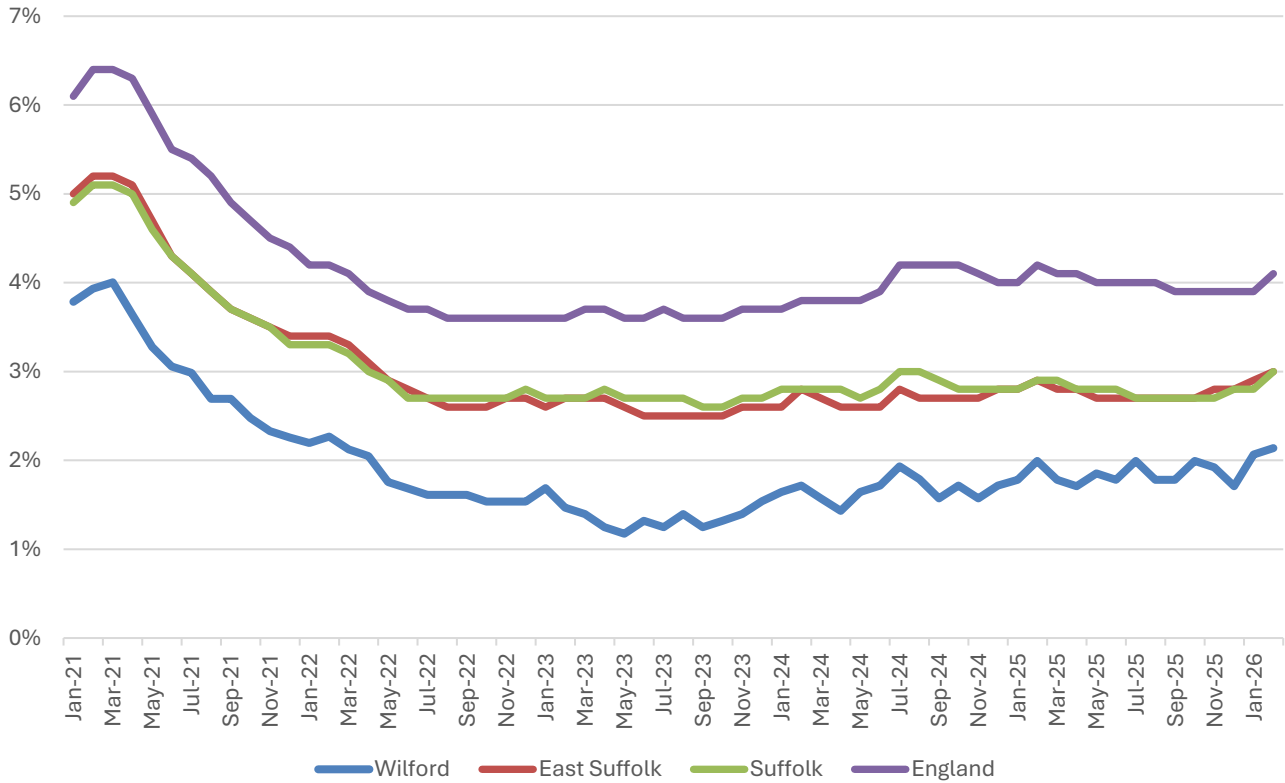
There are around 6,100 people employed in Wilford.



- There is a good mix of employment in Wilford.
- Public administration and defence is the largest sector in the division, providing 15% of local jobs. This is more than three times the proportion of jobs in East Suffolk, Suffolk or England overall.
- Accommodation and food services, construction, manufacturing and primary industries/utilities also account for between 9% and 10% of jobs in the division.

# Labour Market

## Out-of-work benefit claimant rate



- In common with East Suffolk, Suffolk and England as a whole, Wilford saw a steady decline in the proportion of the working age population claiming out-of-work benefits during 2021 and into 2022 following a peak during the COVID-19 pandemic.
- Since then, the claimant rate has been fairly stable at around 1.2% to 2%.
- In February 2026 (the latest available data), 2.1% of 16-64-year-olds were claiming out-of-work benefits in the division.
- The claimant rate in the division is consistently lower than the district, county and national benchmarks.

# Schools

## School Information

### Schools in the Division

Name	Phase	Academy Status	No. pupils	Average cohort size at:			
				Foundation Stage (age 4-7)	KS2 (age 7-11)	KS4 (age 14-16)	KS5 (age 16-18)
Bawdsey CEVCP School	Primary	AC	58	8	8		
Eyke CofE Primary School	Primary	AS	97	15	16		
Hollesley Primary School	Primary	AC	76	8	14		
Melton Primary School	Primary	LA	163	20	23		
Rendlesham Primary School	Primary	AC	277	31	45		
Sandlings Primary School	Primary	LA	82	11	11		

Academy Status key: AS = Academy Sponsored, AC = Academy Converter, LA = LA Maintained, F = Free

### Ofsted information

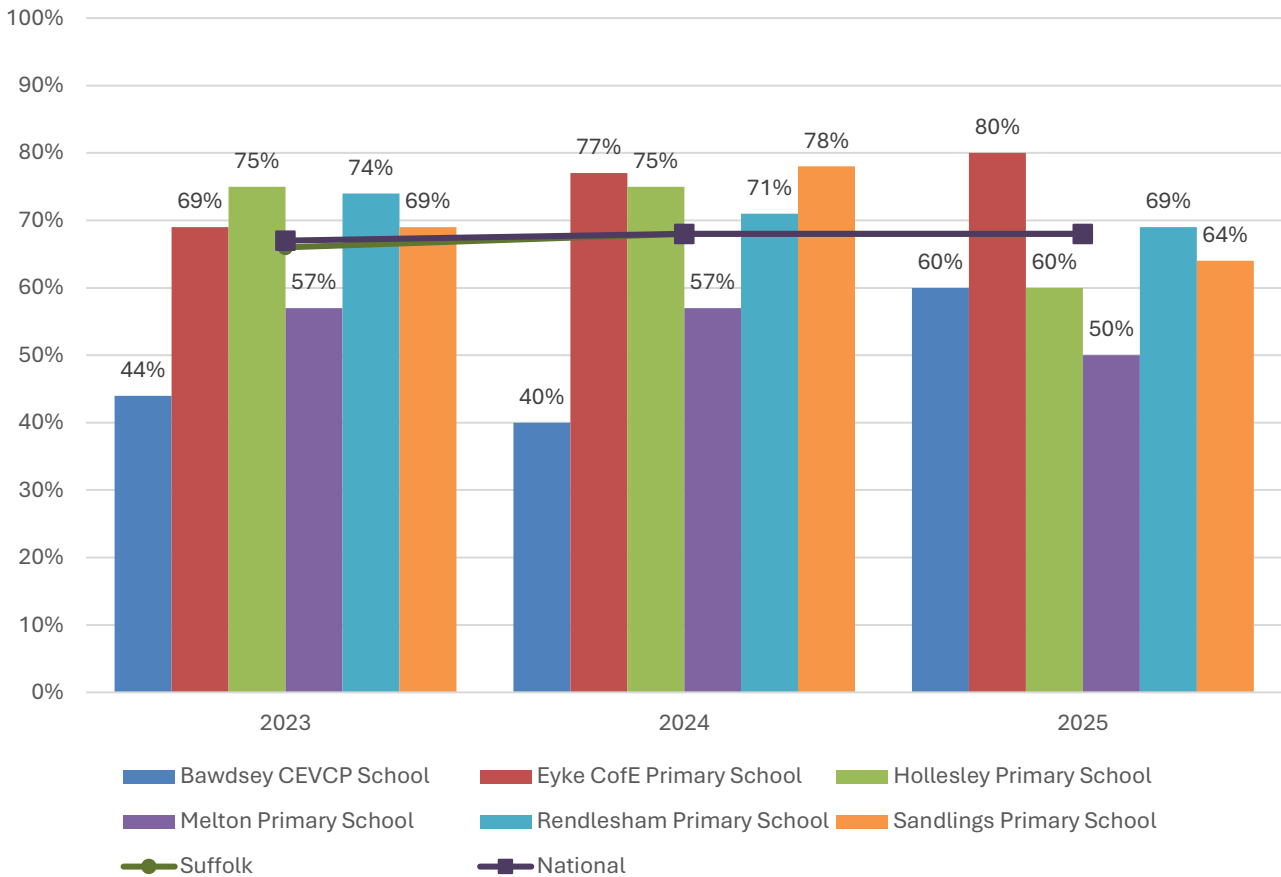
Name	Overall effectiveness	Effectiveness of leadership and management	Behaviour and attitudes	Personal development	Early years provision (if applicable)	Quality of education	Last inspection date
Bawdsey CEVCP School	2	2	9	9	9	9	11/07/2014
Eyke CofE Primary School	2	2	2	2	2	2	08/10/2019
Hollesley Primary School	3	2	2	2	2	3	11/10/2022
Melton Primary School	2	2	2	2	2	2	29/09/2021
Rendlesham Primary School	2	2	9	9	9	9	03/07/2014
Sandlings Primary School	2	2	2	2	2	2	11/03/2020

Code	Judgement	Code	Judgement
0	Insufficient evidence	SM	Special measures
1	Outstanding	8	Does not apply
2	Good	9	No judgement
3	Requires improvement	Null	No data available
4	Inadequate	Not judged	Not judged
SWK	Serious weaknesses	5	No overall grade

# School Attainment

## Foundation Stage Profile (reception)

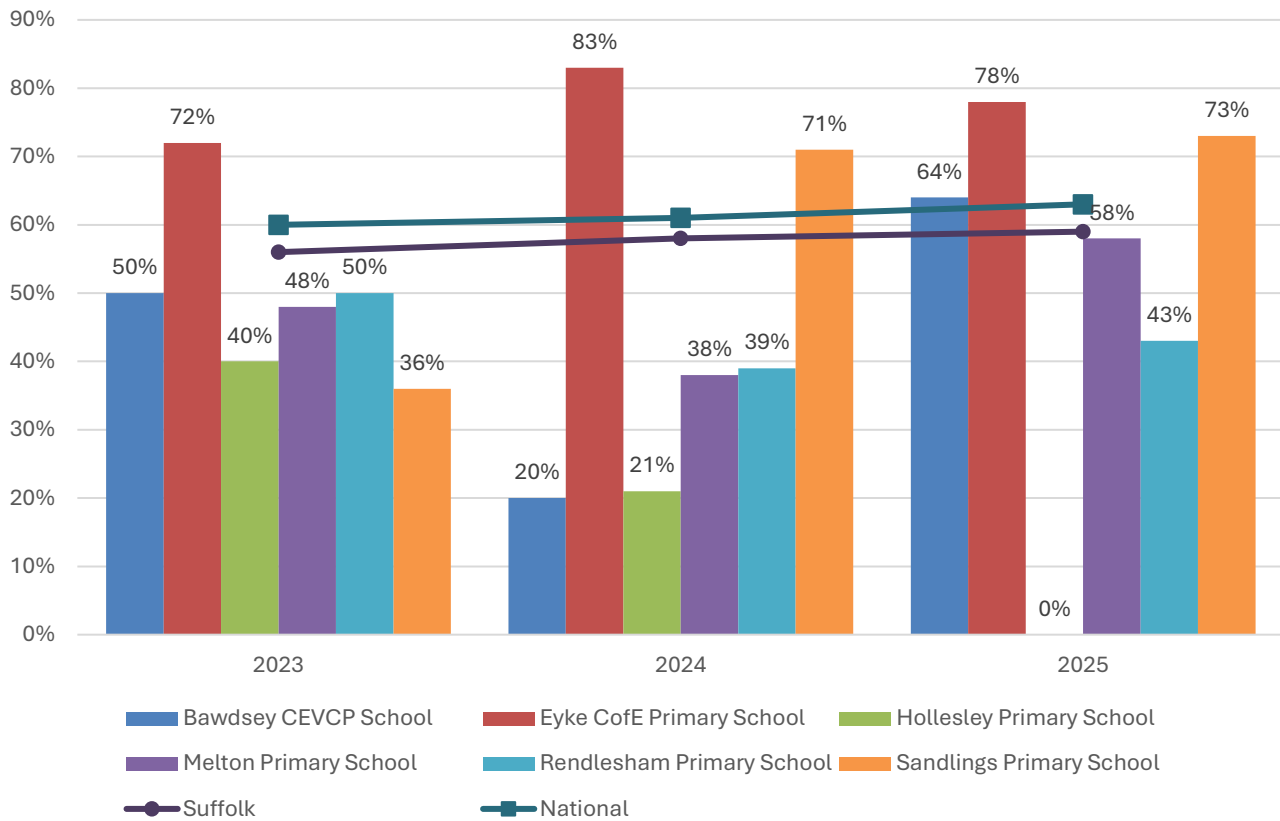
% pupils achieving Good Level of Development (GLD)



- In 2025, the percentage of pupils to achieve a Good Level of Development (GLD) at Foundation Stage (FS) was above the county and national benchmarks at two of the six primary schools in Wilford; Eyke Church of England Primary and Rendlesham Primary Schools.
- Attainment at both schools has been consistently above average throughout the last three years.
- At the other schools in the division, FS attainment has been more mixed. At Hollesley and Sandlings Primary Schools, attainment levels were high in 2023 and 2024, before dipping eight and four percentage points respectively below the overall Suffolk and national figures in 2025.
- FS attainment at Bawdsey CEVCP and Melton Primary Schools has been consistently below average throughout this period.
- It should be noted that cohort sizes at most of these schools are small and they are therefore more subject to significant fluctuations from one year to the next.

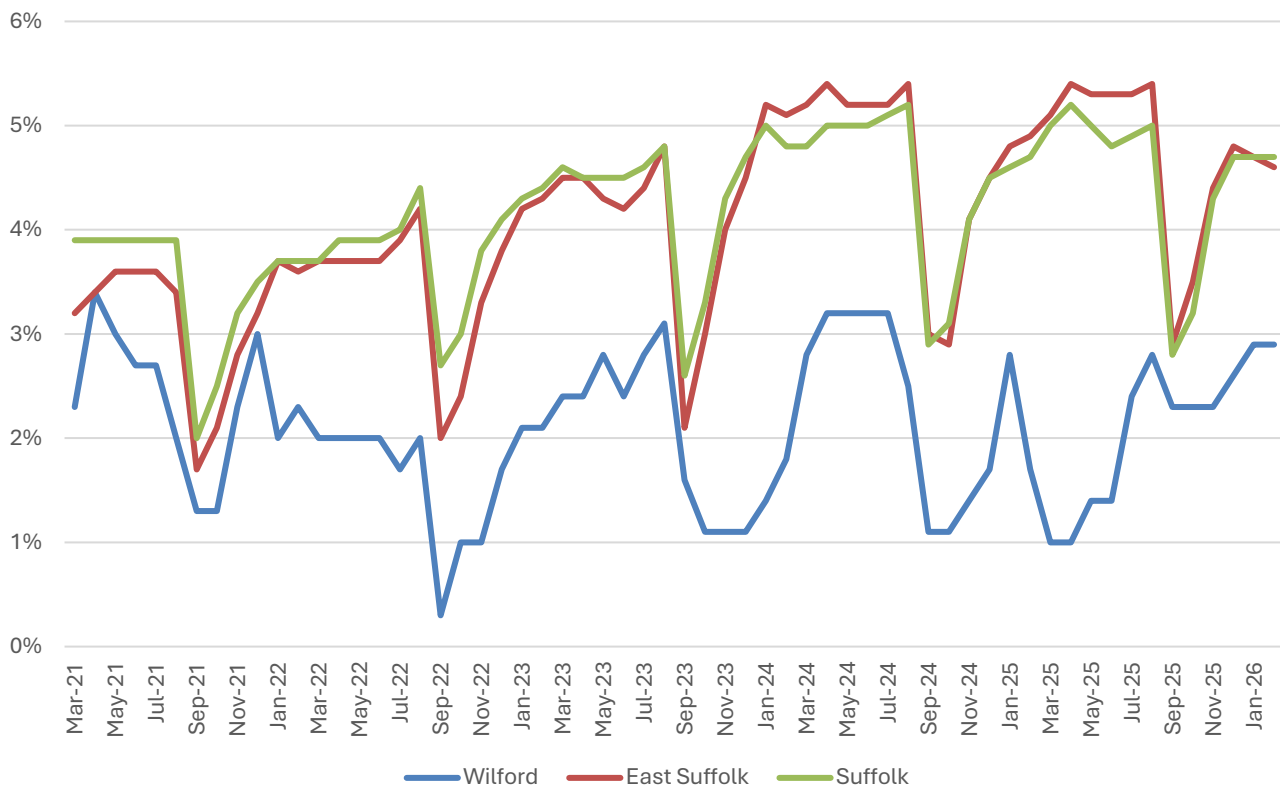
## Key Stage 2 (age 11)

% pupils achieving the Expected Level or better in Reading, Writing and Mathematics



- Key stage 2 attainment at schools in Wilford has generally been below the county and national benchmarks over the last three years.
- Eyke Church of England Primary is the only school in the division to see an above average percentage of pupils achieve the expected level or better in reading, writing and mathematics throughout this period.
- Three schools, Hollesley Primary, Melton Primary and Rendlesham Primary, saw KS2 levels consistently below the national figure in 2023 to 2025.

## NEET % (Not in Education, Employment or Training)



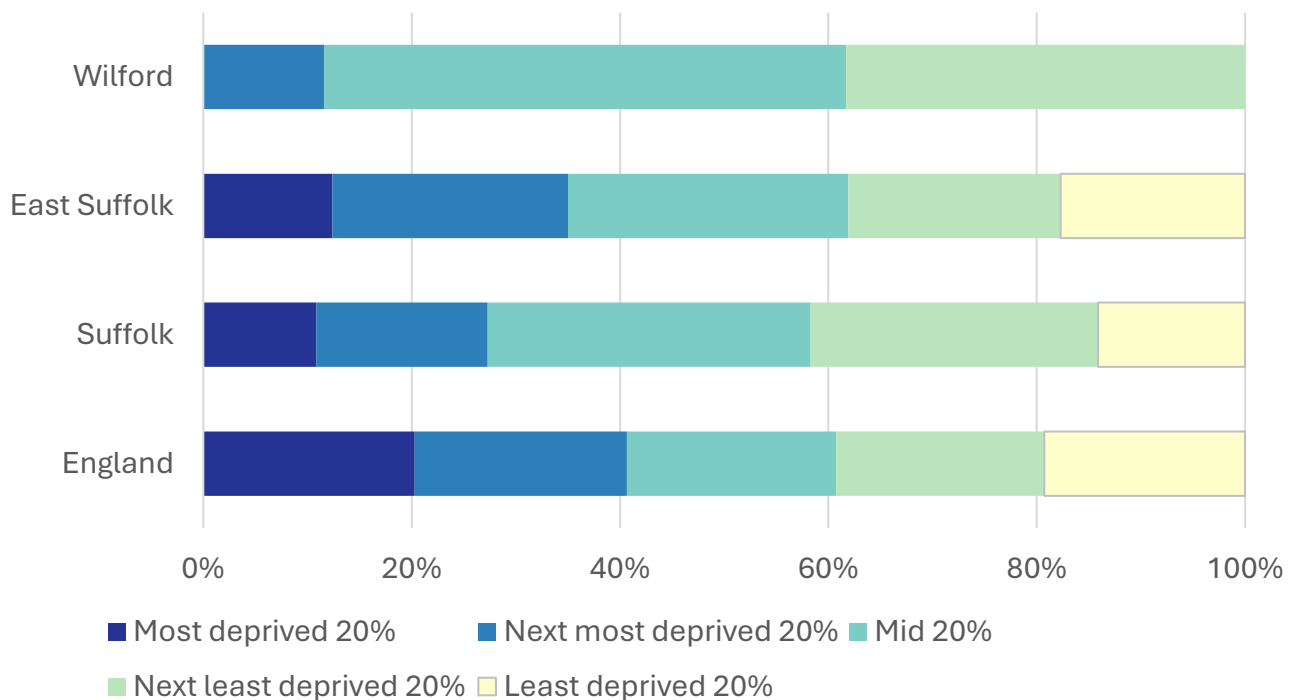
- In February 2026, 2.9% of 16-17-year-olds in Wilford were classified as NEET (not in education, employment or training).
- NEET levels fluctuate considerably according to the time of year and due to small numbers of 16-17-year-olds in the division, typically being at their lowest at the beginning of a new school year.
- In Wilford, the proportion of children who are NEET is consistently below the district and county figures.

## Index of Multiple Deprivation (IMD) 2025 (see map overleaf)

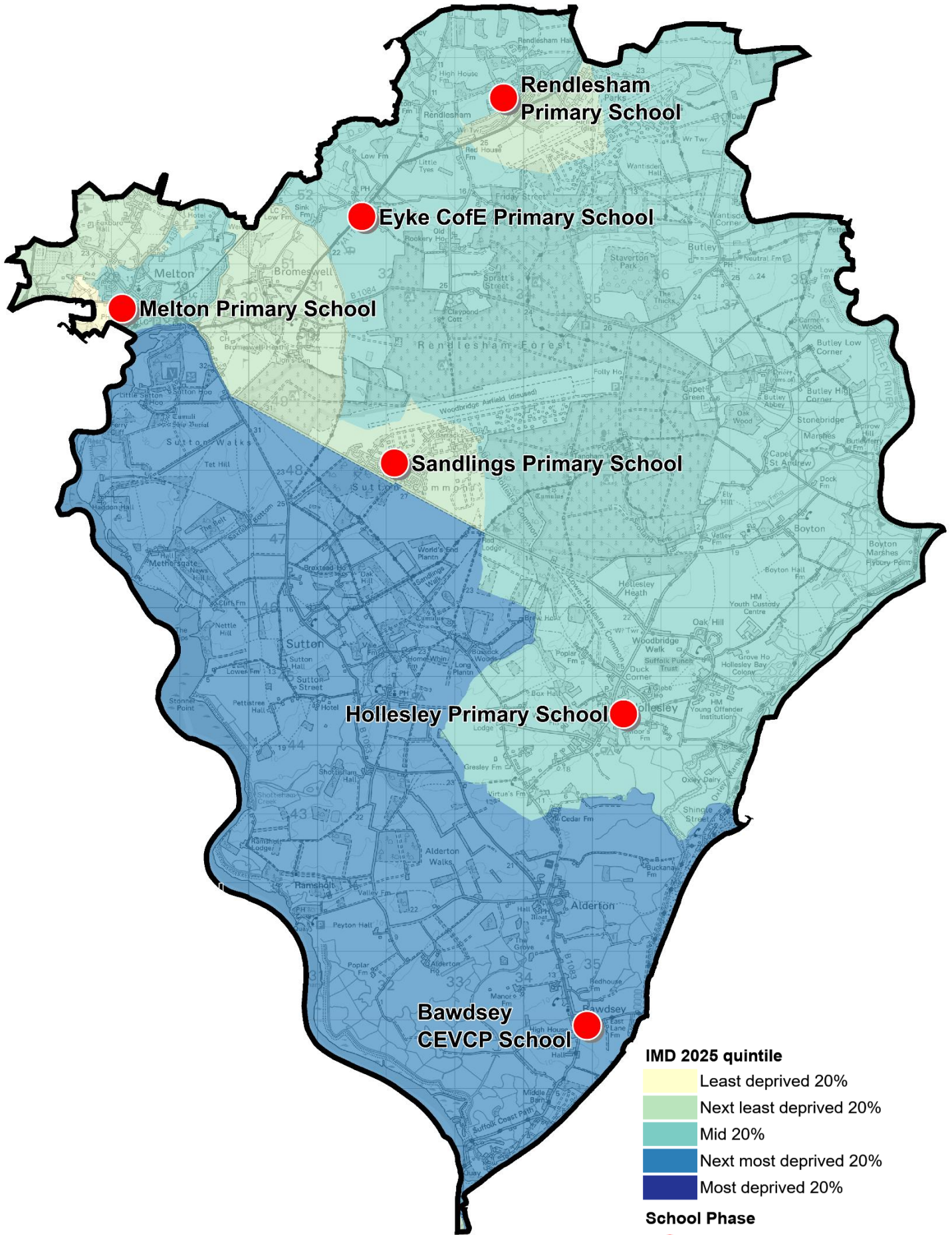
The IMD combines a number of indicators, chosen to cover a range of economic, social and housing issues, into a single deprivation score for each small area in England. This allows each area to be ranked relative to one another according to their level of deprivation. Small areas (Lower Super Output Areas, average population 1,700) are most commonly described as being in 1 of 5 quintile bands. The bottom quintile represents the 20% of areas that are the most deprived in England; these are shaded pale yellow on the map. The top quintile represents the least deprived areas in England and is shaded dark blue.

The Index is widely used to analyse patterns of deprivation, identify areas that would benefit from special initiatives or programmes and as a tool to determine eligibility for specific funding streams.

The chart below shows the percentage of the population of the division that live in areas ranked among each of the five quintiles of deprivation, alongside the district, county and England comparators.



- Overall deprivation levels in Wilford are moderate to low but also quite varied, with three of the five quintiles of deprivation represented in the division.
- Half of the population of the division live in areas that are ranked among the middle quintile of deprivation, with 38% of residents living in neighbourhoods among the second least deprived quintile, and the remaining 12% of the division ranked in the second most deprived quintile.
- See the map overleaf for the distribution of IMD 2025 results across the division.



**IMD 2025 quintile**

- Least deprived 20%
- Next least deprived 20%
- Mid 20%
- Next most deprived 20%
- Most deprived 20%

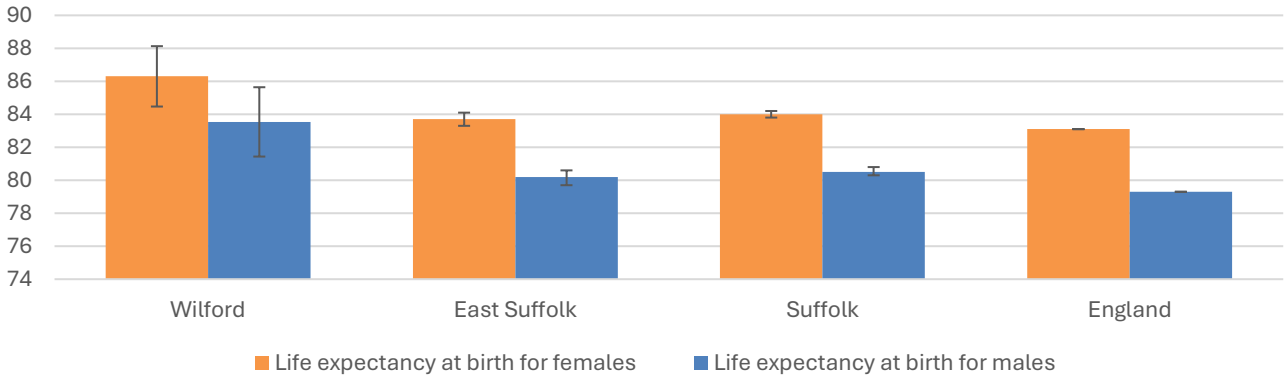
**School Phase**

- Primary
- Secondary
- Special
- Pupil referral unit/Alternative provision
- Nursery

# Health

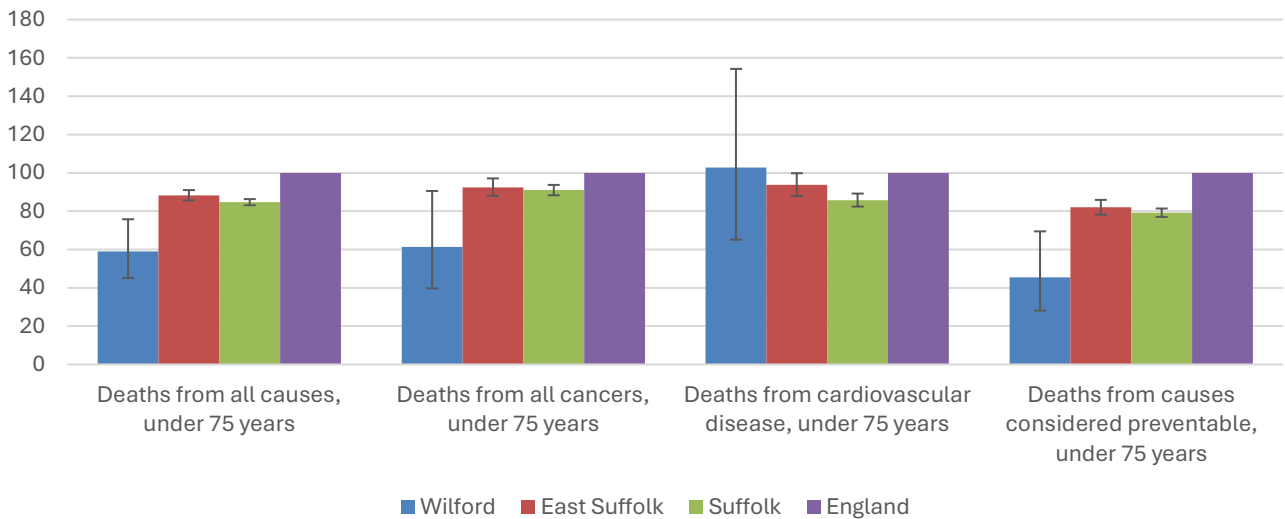
The local data used here is based on relatively small numbers. The confidence limits provide an indication of the reliability of the data. The 95% confidence intervals utilised on the chart provide a range within which there is 95% chance of the true result lying.

## Life expectancy at birth



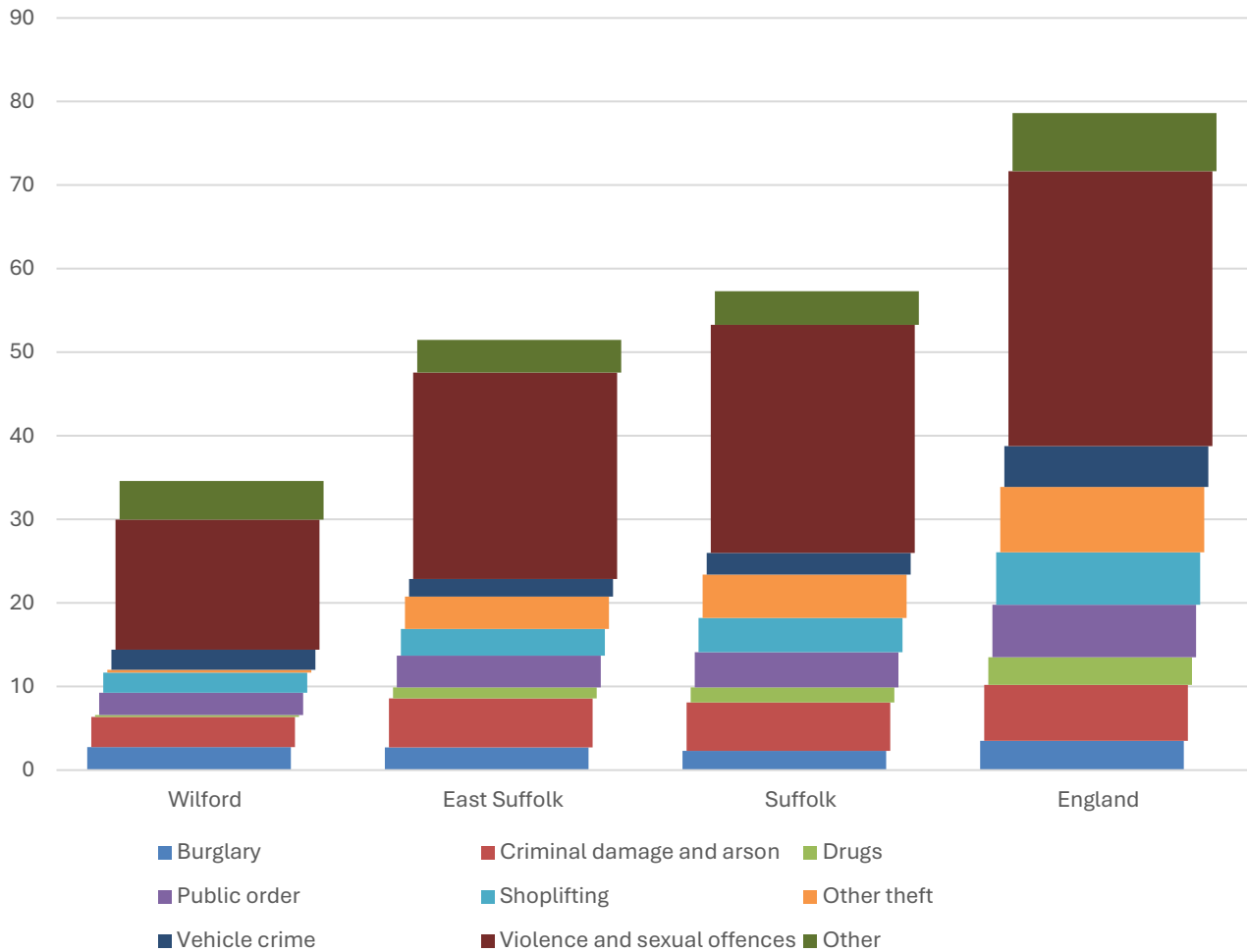
- The latest life expectancy at birth estimates for Wilford are 86.3 for females (the England figure is 83.1), and 83.5 for males (compared to 79.3 nationally).
- Life expectancy for both males and females in the division are statistically significantly higher than the England figures.

## Deaths, under 75 years, standardised mortality ratio



- Estimated standardised mortality ratios for early deaths from all causes, all cancers, and causes considered preventable in Wilford are below 100, indicating that deaths in under 75s due to these causes are lower than in England.
- Confidence intervals around these estimates are wide for local data, but the SMRs for deaths from all causes, all causes, and from causes considered preventable are statistically significantly lower than England. Early deaths from cardiovascular disease occur at a statistically similar rate in the division as they do in England, East Suffolk and Suffolk.
- The standardised mortality ratio data shown here means that for every 100 early deaths from all causes across England as a whole, there are an estimated 59 comparable deaths in Wilford.

# Crime & Community Safety



- Crime levels in Wilford are relatively low compared to the district, county and national figures.
- In the year to the end of January 2026, there were 35 recorded crimes per 1,000 residents in the division, compared to 51 in East Suffolk, and 57 countywide.
- Most types of crime occur at a lower rate in the division than the district and county average, the exceptions being burglary and other crime.
- By far the most common type of crime recorded during this period was violence and sexual offences, which accounted for just under half of all recorded crimes in the division.

## Additional Information

### Parishes in Division

- |                  |              |
|------------------|--------------|
| Alderton         | Melton       |
| Bawdsey          | Ramsholt     |
| Boyton           | Rendlesham   |
| Bromeswell       | Shottisham   |
| Butley           | Sutton       |
| Capel St. Andrew | Sutton Heath |
| Eyke             | Wantisden    |
| Hollesley        |              |

## Data sources

Category	Indicator	Source
Demographic Profile	Quinary population table 2024	ONS 2024 mid-year population estimates
	Population pyramid 2024	ONS 2024 mid-year population estimates
	Ethnicity 2021	ONS 2021 Census
Economy	Employment by broad industrial sector 2024	ONS Business Register and Employment Survey via NOMIS
Labour market	Claimant count: The number of people claiming Jobseeker's Allowance plus those who claim Universal Credit who are out of work (% 16-64 population) January 2021-February 2026	DWP via NOMIS
Education	School information and attainment 2023-2025	Suffolk County Council CYP iHub
	% 16-17-year-olds NEET (Not in Employment, Education or Training) March 2021 to February 2026	Suffolk County Council CYP iHub via the Suffolk Observatory
Deprivation	Index of Multiple Deprivation 2025	Ministry of Housing, Communities and Local Government
Health	Life expectancy at birth 2016-2020 (2018-2020 for comparator areas)	Office for Health Improvement and Disparities
Health	Standardised mortality ratio for deaths from all causes, cancer, cardiovascular disease, and from causes considered preventable (under 75 years), 2016-2020 (2019-2023 for comparator areas). The standardised mortality ratio is the ratio of observed deaths in the study group to expected deaths in the general population	Office for Health Improvement and Disparities
Community Safety	Recorded crime rate per 1,000 resident population February 2025 to January 2026	Data.police.uk via the Suffolk Observatory

For more data and information about Wilford Electoral Division, see the Suffolk Observatory [www.suffolkobservatory.info](http://www.suffolkobservatory.info)

