

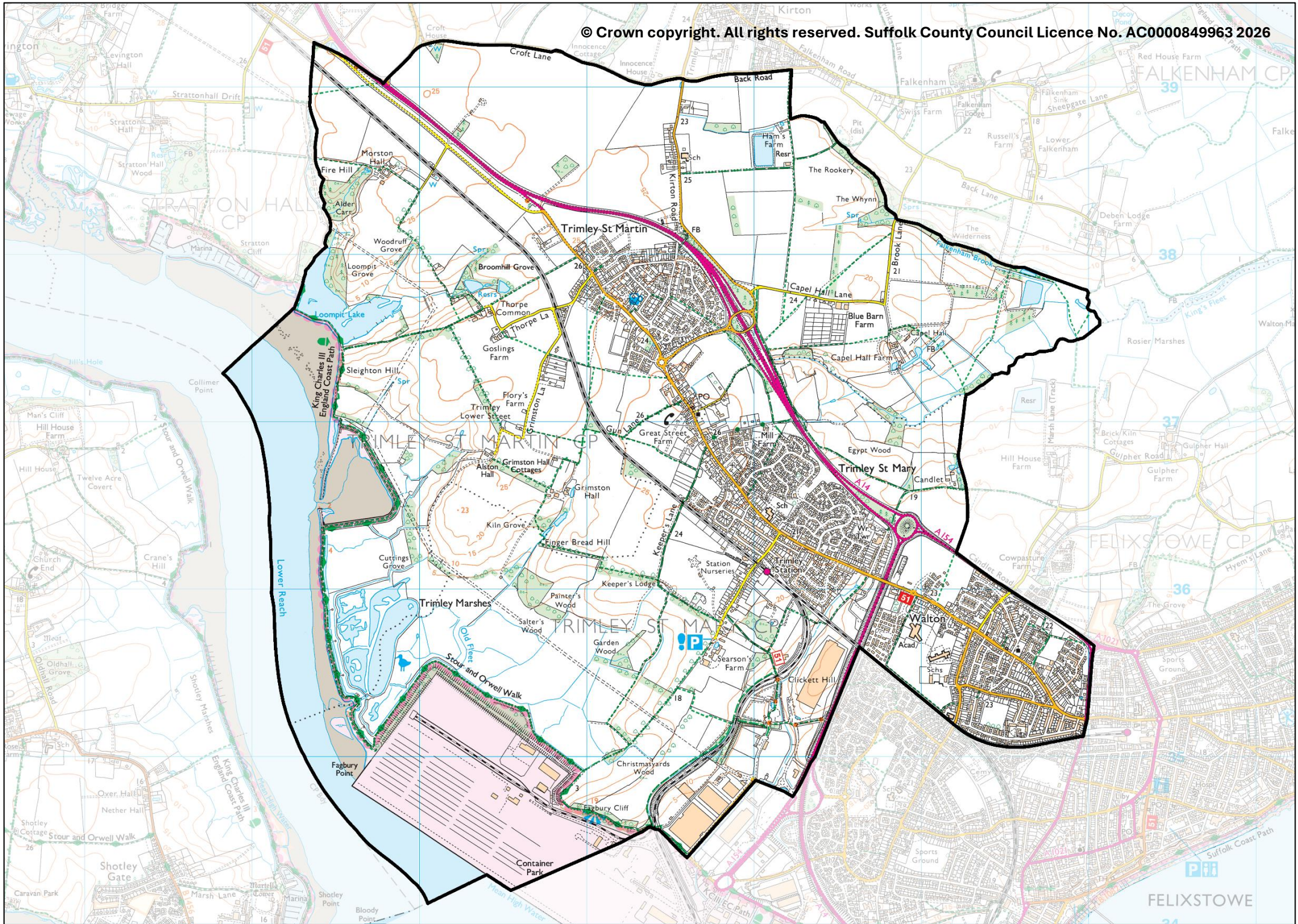
Walton & Trimleys

County Electoral Division profile

May 2026

This division comprises parts of Orwell & Villages, and Western Felixstowe Wards





Contents

- Demographic Profile: Age & Ethnicity
- Economy and Labour Market
- Schools & NEET
- Index of Multiple Deprivation
- Health
- Crime & Community Safety
- Additional Information
- Data Sources

Electoral Division Profiles: an introduction

These profiles have been produced to support elected members, constituents and other interested parties in understanding the demographic, economic, social and educational profile of their neighbourhoods. We have used the latest data available at the time of publication.

Much more data is available from national and local sources than is captured here, but it is hoped that the profile will be a useful starting point for discussion, where local knowledge and experience can be used to flesh out and illuminate the information presented here.

The profile can be used to help look at some fundamental questions e.g.

- Does the age profile of the population match or differ from the national profile?
- Is there evidence of the ageing profile of the county in all the wards in the Division or just some?
- How diverse is the community in terms of ethnicity?
- What is the impact of deprivation on families and residents?
- Does there seem to be a link between deprivation and school performance?
- What is the breakdown of employment sectors in the area?
- Is it a relatively healthy area compared to the rest of the district or county?
- What sort of crime is prevalent in the community?

A vast amount of additional data is available on the **Suffolk Observatory**

www.suffolkobservatory.info

The Suffolk Observatory is a free online resource that contains all Suffolk's vital statistics; it is the one-stop-shop for information and intelligence about Suffolk. Through data, reports and maps, the Suffolk Observatory provides a comprehensive picture of the County. It is a great source for useful facts and figures that can be used for writing reports and presentations, informing strategic and business planning, preparing funding applications or supporting academic research. Data is presented around the key themes of population, children and young people, health and social care, housing, crime and community safety, deprivation, economy and employment and environment. All areas of the county are covered, right down to district, electoral division, ward and parish level, with information easily accessible in a variety of formats. You can also build your own reports for custom areas.

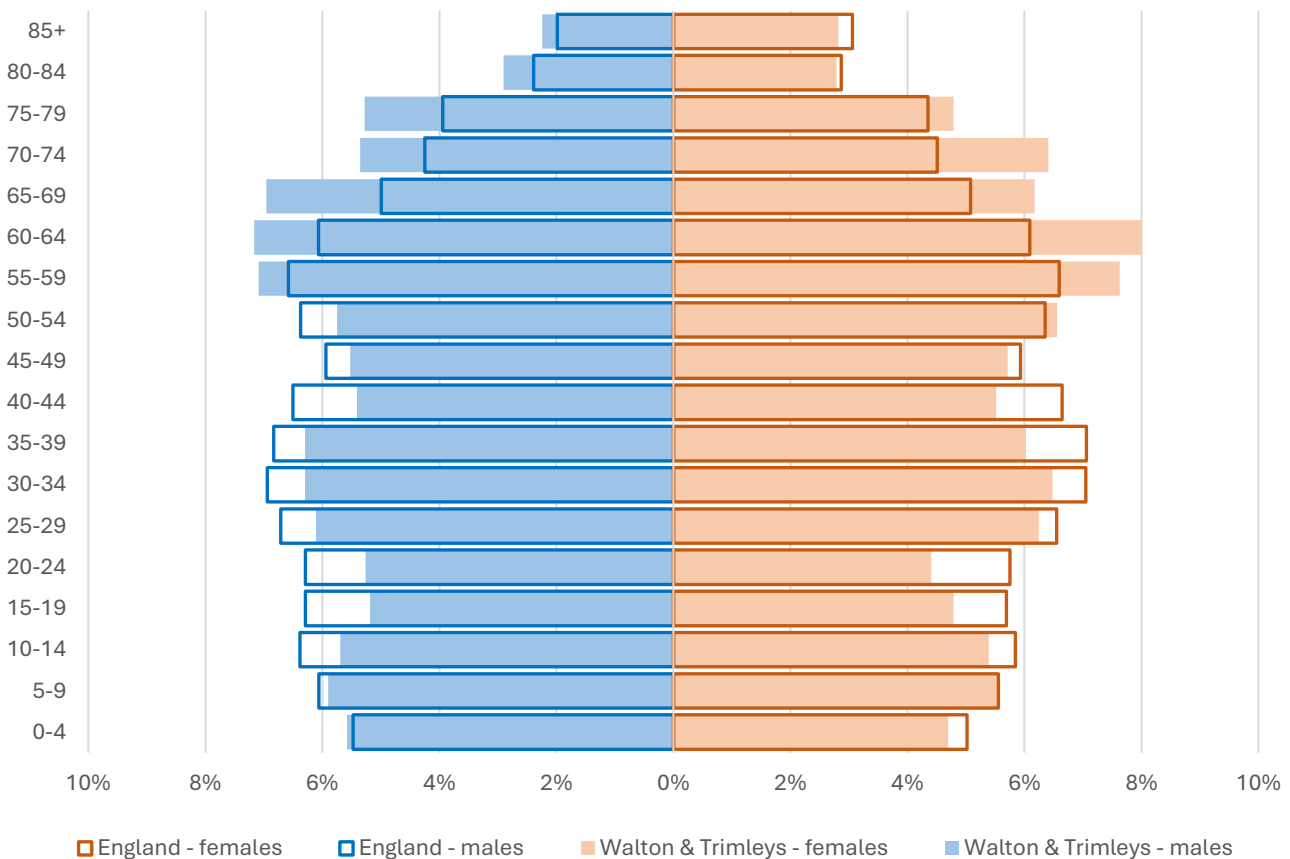
Technical Notes:

1. Where electoral divisions do not exactly match the boundaries at which the data is available (e.g. ward, Output Area or Lower Super Output Area), we have adopted a "best-fit" approach to produce a dataset.
2. District, county and national level data is provided where possible to provide a context for comparisons.

Demographic Profile - Age

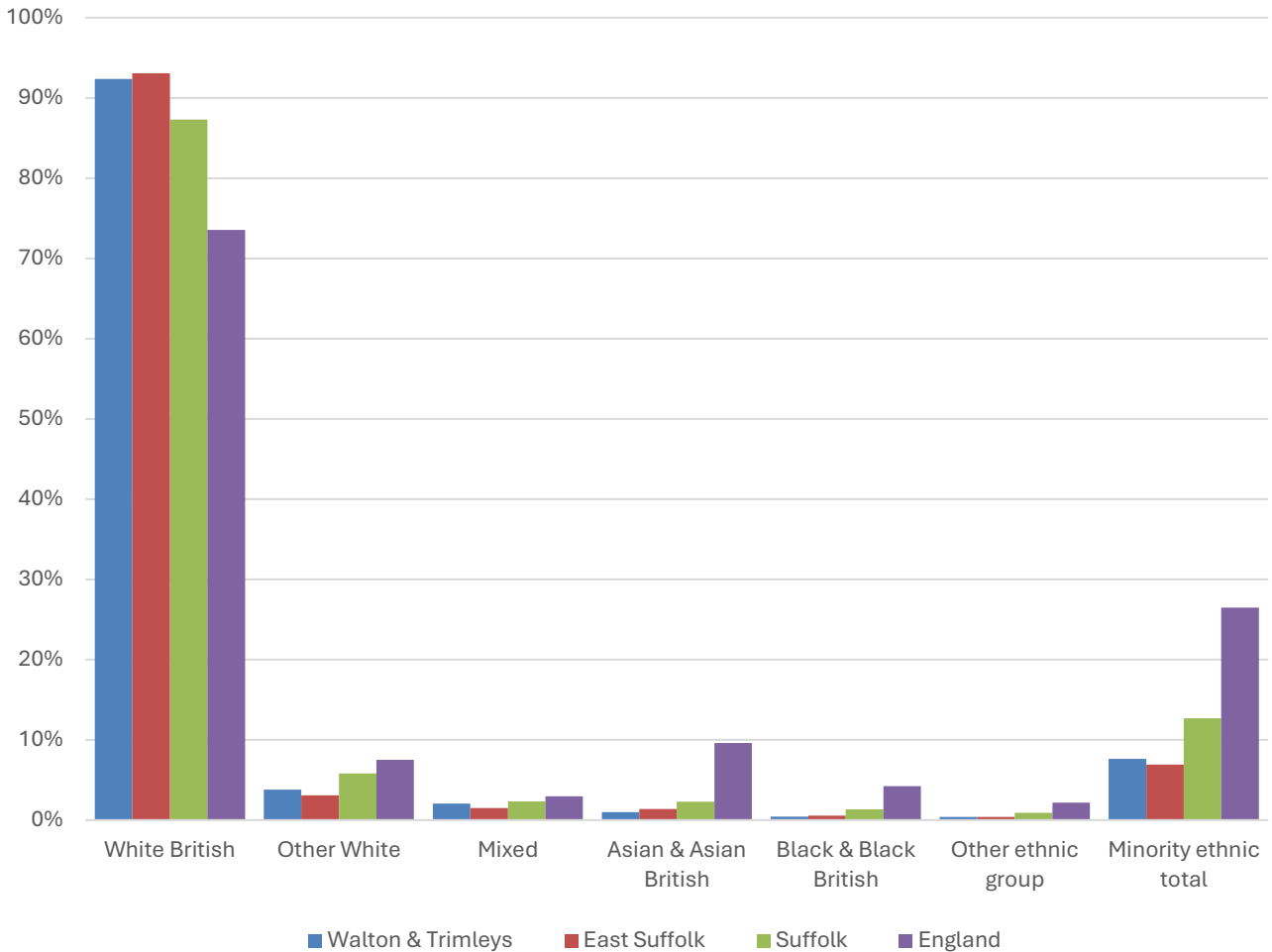
In mid-2024, the estimated population of Walton and Trimleys stood at 10,797, an increase of 14.2% over the past decade. The age structure of the component wards and the division as a whole is set out below.

	Walton & Trimleys Division	Orwell & Villages Ward	Western Felixstowe Ward
All Ages	10,797	6,035	4,762
0-4	554	254	300
5-9	619	313	306
10-14	598	323	275
15-19	538	260	278
20-24	521	266	255
25-29	667	359	308
30-34	690	367	323
35-39	665	351	314
40-44	590	313	277
45-49	607	353	254
50-54	665	398	267
55-59	795	446	349
60-64	820	505	315
65-69	708	436	272
70-74	636	417	219
75-79	543	334	209
80-84	307	197	110
85+	274	143	131



- The age pyramid for Walton and Trimleys division shows a higher proportion of people aged 55 and over than in England as a whole, but this difference is not as extreme as in many parts of Suffolk.
- The most common age group in the division is 60-64-year-olds (7.6% of the local population), followed by 55-59-year-olds (7.4%), and 65-69-year-olds (6.6%).
- Just under a quarter (22.9%) of the population of Walton and Trimleys is of retirement age.

Demographic Profile - Ethnicity

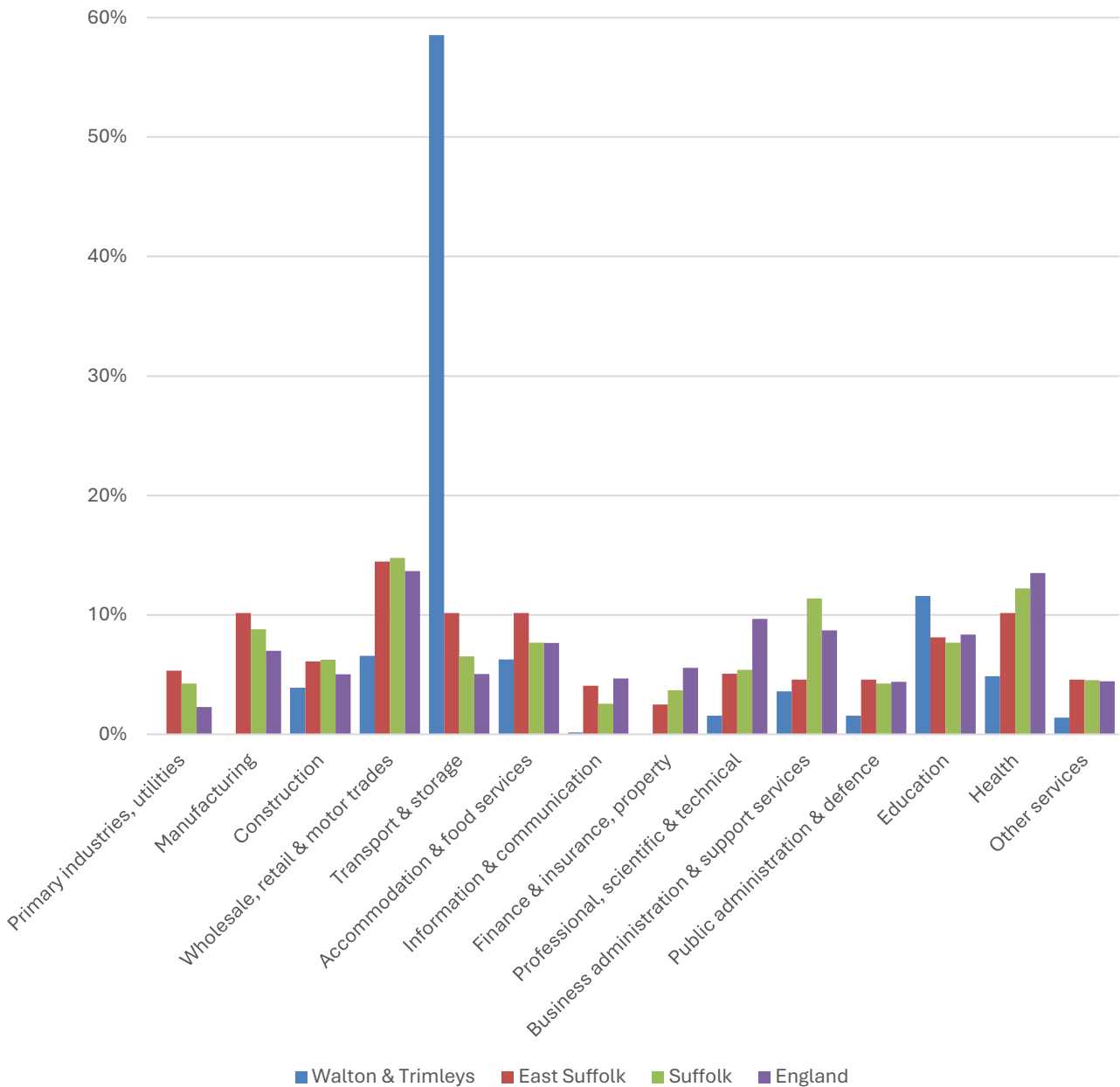


- According to the latest data (2021 Census), 92.4% of the population of Walton and Trimleys are White British.
- There were 771 (7.6%) people of minority ethnic origin in the division, less than the proportion in Suffolk as a whole and around a sixth of the England average.
- Walton and Trimleys has a similar diversity profile to East Suffolk district, though with proportionally larger Other White and Mixed/multiple ethnic group populations.

	All people		White British		Other White		Mixed		Asian and Asian British		Black and Black British		Other Ethnic Group		Total minority ethnic population	
	Count	%	Count	%	Count	%	Count	%	Count	%	Count	%	Count	%	Count	%
Walton & Trimleys	10,098		9,327	92.4	381	3.8	207	2.0	101	1.0	44	0.4	38	0.4	771	7.6
East Suffolk	246,060		229,063	93.1	7,564	3.1	3,707	1.5	3,447	1.4	1,357	0.6	922	0.4	16,997	6.9
Suffolk	760,687		664,205	87.3	44,066	5.8	17,807	2.3	17,483	2.3	10,168	1.3	6,958	0.9	96,482	12.7
England				73.5		7.5		3.0		9.6		4.2		2.2		26.5

Economy

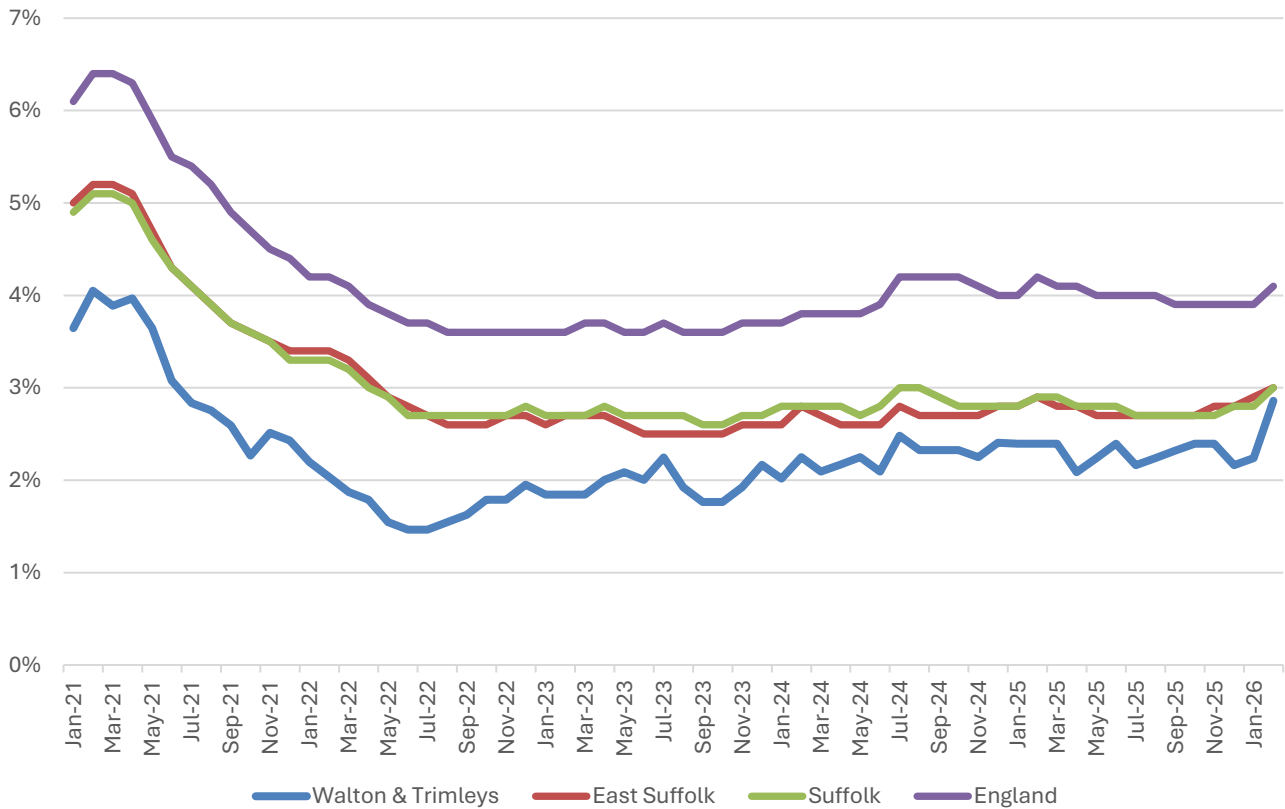
There are around 3,200 people employed in Walton and Trimleys.



- Employment in Walton and Trimleys is dominated by the transport and storage sector, which includes activities related to the Port of Felixstowe.
- This sector provides almost 60% of jobs in the division.
- On account of the dominance of transport and storage, almost all other sectors account for a smaller proportion of employment in Walton and Trimleys than they do elsewhere. The next most important employers in the division are education (11.6%) and wholesale, retail and motor trades (6.6%).

Labour Market

Out-of-work benefit claimant rate



- In common with East Suffolk, Suffolk and England as a whole, Walton and Trimleys saw a steady decline in the proportion of the working age population claiming of out-of-work benefits during 2021 and into 2022 following a peak during the COVID-19 pandemic.
- Since then, the claimant rate in the division has climbed very slowly from the low of 1.5% in mid-2022, to reach the current level of 2.9% according to the most recent data from February 2026.
- The claimant rate in Walton and Trimleys is generally around 0.5 percentage points below the district and county figures, and 1.5 percentage points below the national average.

Schools

School Information

Schools in the Division

Name	Phase	Academy Status	No. pupils	Average cohort size at:			
				Foundation Stage (age 4-7)	KS2 (age 7-11)	KS4 (age 14-16)	KS5 (age 16-18)
Felix Primary School	Primary	AC	201	27	48		
Trimley St Martin Primary School	Primary	LA	168	22	28		
Trimley St Mary Primary School	Primary	LA	389	53	58		
Felixstowe School	Secondary	AS	1,169			213	44

Academy Status key: AS = Academy Sponsored, AC = Academy Converter, LA = LA Maintained, F = Free

Ofsted information

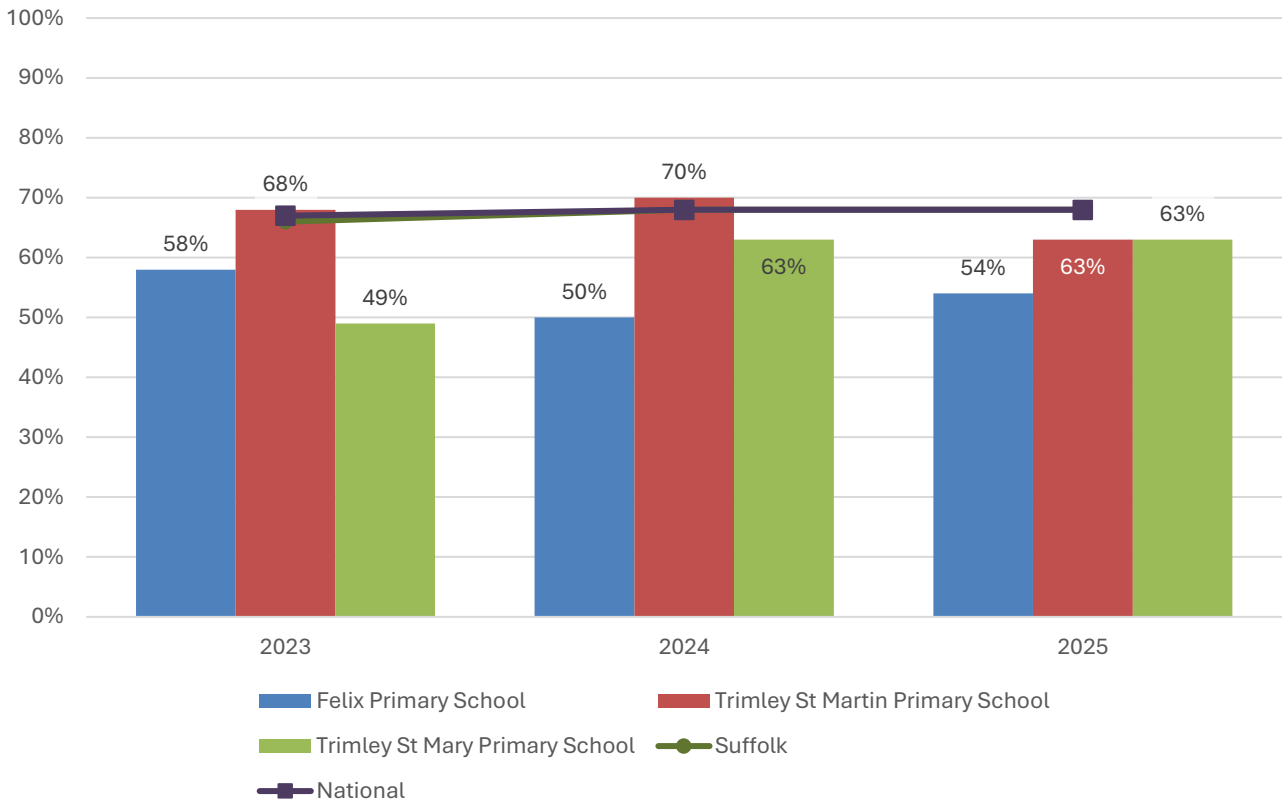
Name	Overall effectiveness	Effectiveness of leadership and management	Behaviour and attitudes	Personal development	Early years provision (if applicable)	Quality of education	Last inspection date
Felix Primary School	3	2	2	2	2	3	31/10/2023
Trimley St Martin Primary School	2	2	9	9	2	9	04/12/2014
Trimley St Mary Primary School	5	2	2	2	2	3	15/10/2024
Felixstowe School	2	2	2	2	9	2	04/06/2024

Code	Judgement	Code	Judgement
0	Insufficient evidence	SM	Special measures
1	Outstanding	8	Does not apply
2	Good	9	No judgement
3	Requires improvement	Null	No data available
4	Inadequate	Not judged	Not judged
SWK	Serious weaknesses	5	No overall grade

School Attainment

Foundation Stage Profile (reception)

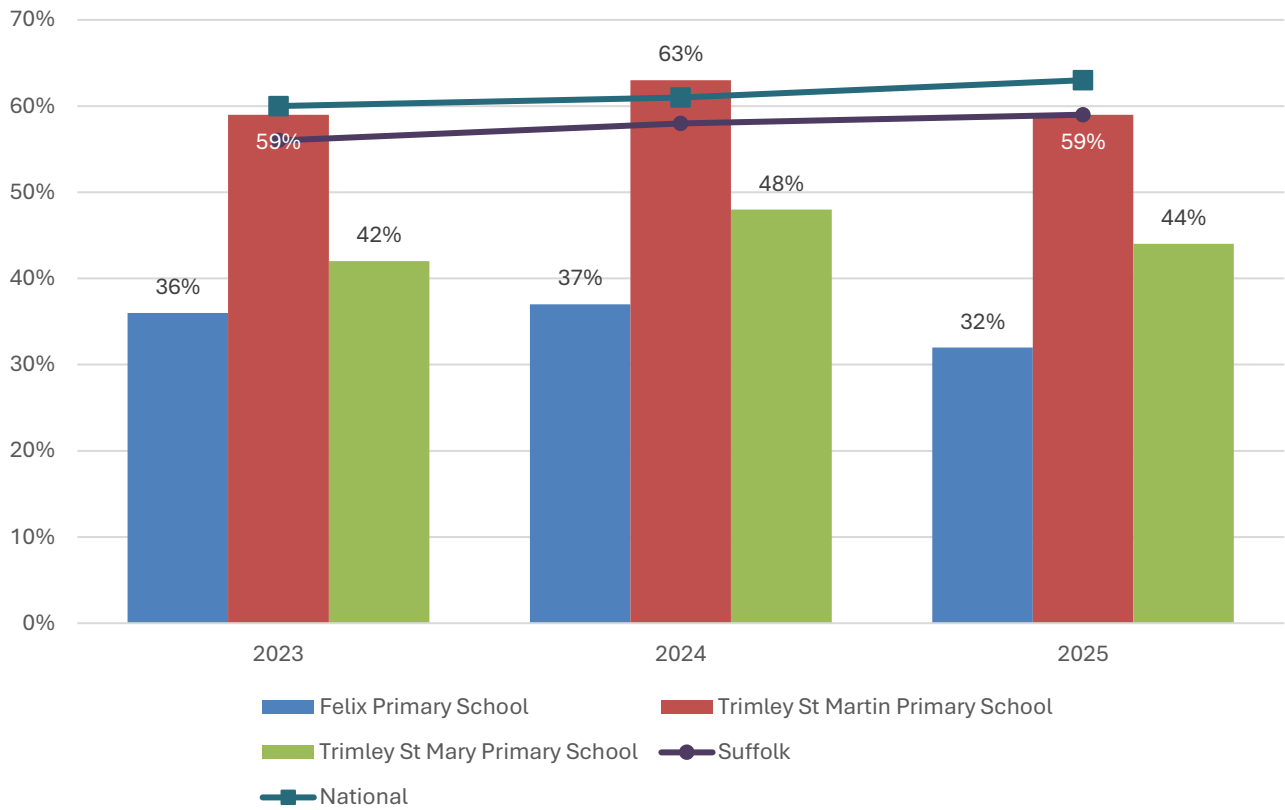
% pupils achieving Good Level of Development (GLD)



- No school in Walton and Trimleys saw consistently above average Foundation Stage attainment over the last three years.
- In 2025, 63% of pupils at Trimley St Martin and Trimley St Mary Primary Schools achieved a Good Level of Development at Foundation Stage, five percentage points below the national figure.
- Attainment at Trimley St Martin Primary did surpass the county and national benchmarks in 2023 and 2024.
- Foundation Stage attainment at Felix and Trimley St Mary Primary Schools was below the national benchmark throughout the 2023 to 2025 period.

Key Stage 2 (age 11)

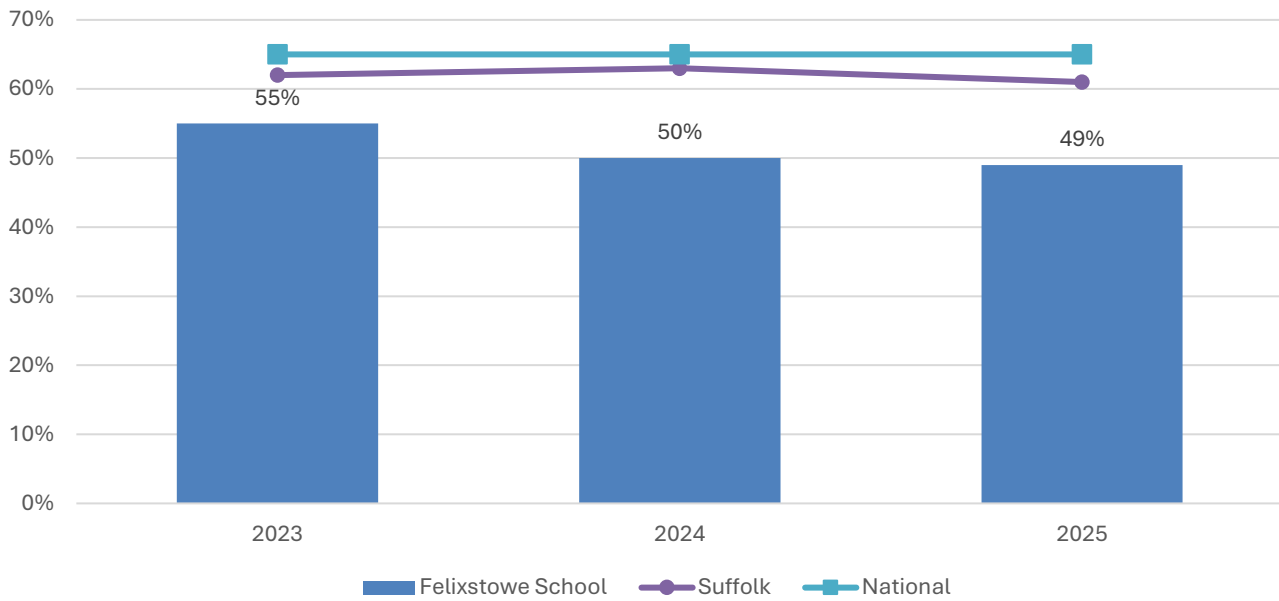
% pupils achieving the Expected Level or better in Reading, Writing and Mathematics



- Key stage 2 attainment at Felix Primary School and Trimley St Mary Primary School has been consistently below the county and national average over the past three years of data
- The percentage of pupils to achieve the expected level or better in reading, writing and mathematics at Trimley St Martin Primary exceeded the national benchmark in 2024, but was slightly below it in the preceding and following years.

Key Stage 4 (GCSE) (age 16)

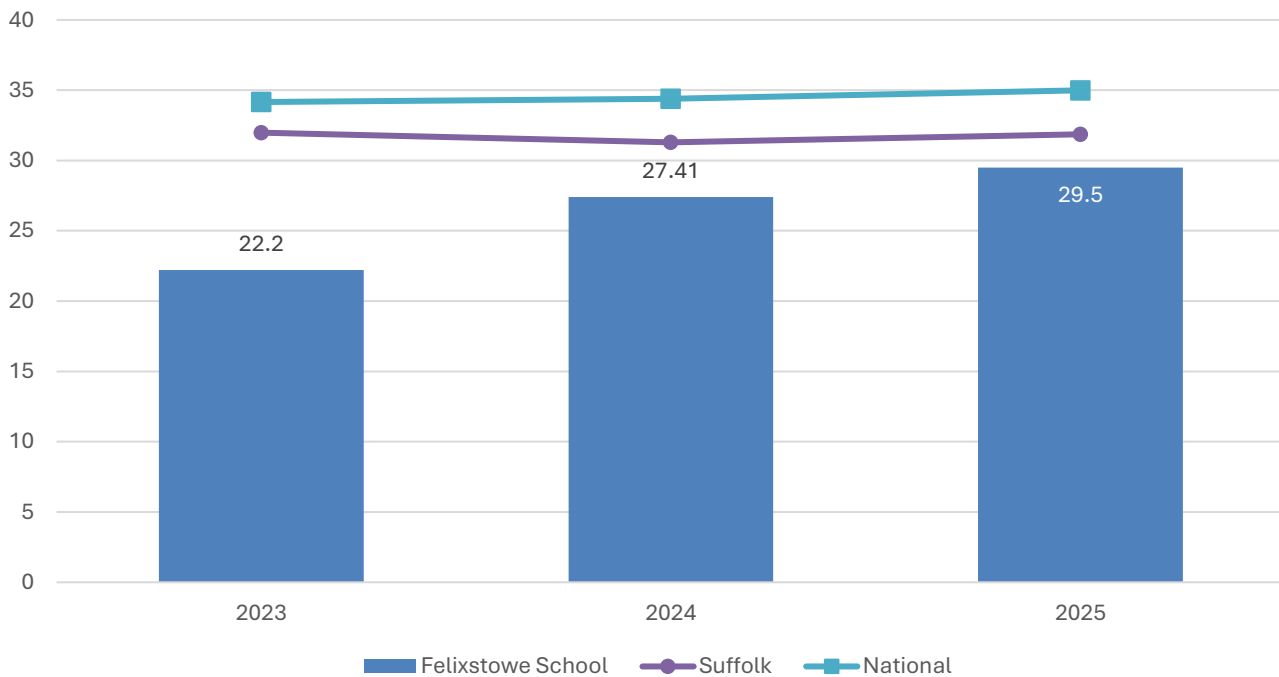
% pupils achieving level 4-9 in English and Mathematics



- Key Stage 4 attainment at Felixstowe School has declined slightly in both of the last two years, and remained around 10-15 percentage points below the county and national benchmarks during this time.

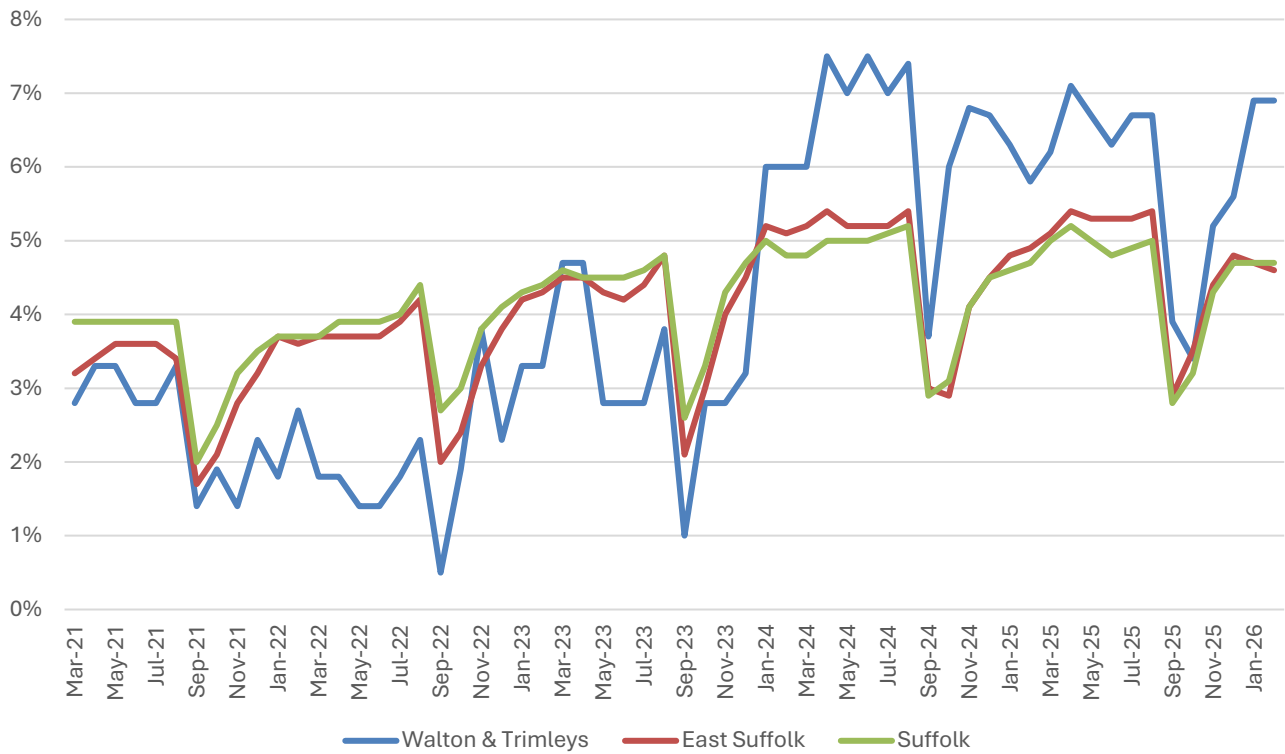
Key Stage 5 (A level) (age 18)

Average A Level Points per entry



- Average A Level points per entry have improved steadily in the last two years at Felixstowe School, but remained below the county and national figures throughout.

NEET % (Not in Education, Employment or Training)



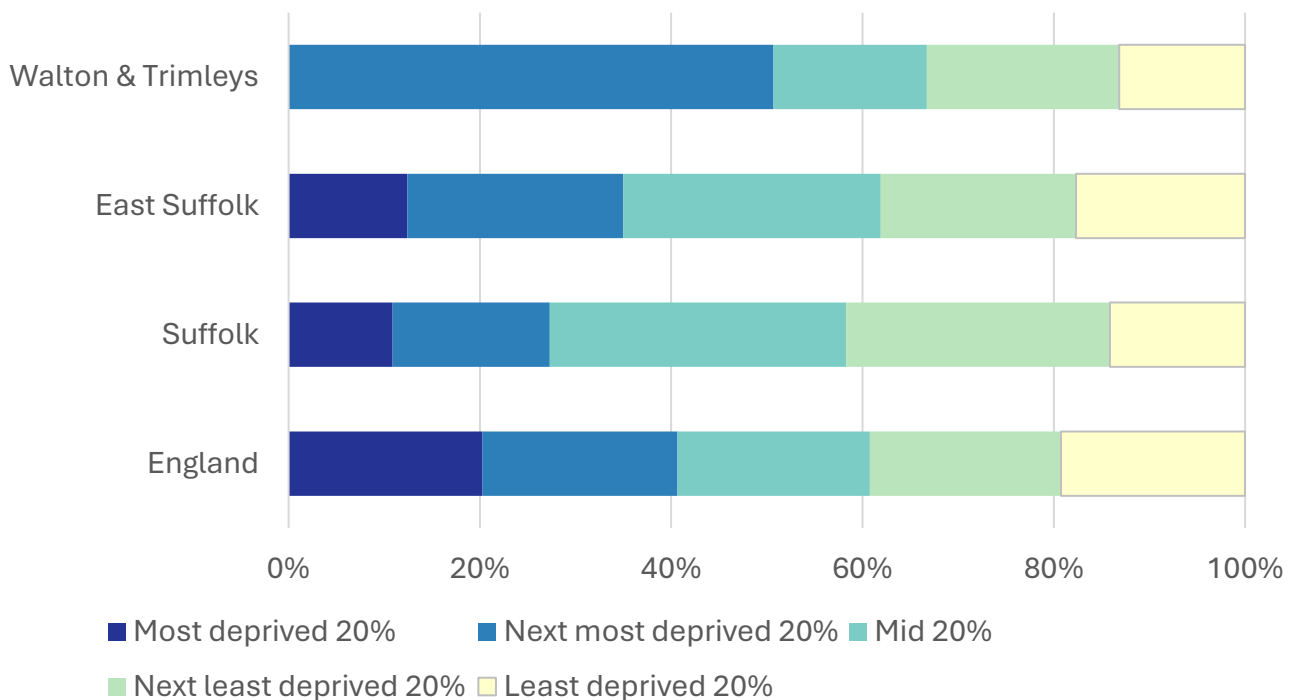
- In February 2026, 6.9% of 16–17-year-olds in Walton and Trimleys were classified as NEET (not in education, employment or training).
- NEET levels fluctuate considerably according to the time of year and due to small numbers of 16-17-year-olds in the division, typically being at their lowest at the beginning of a new school year.
- In Walton and Trimleys, NEET levels tended to be below the district and county figures in 2021 to 2023, but have usually been above average since then.

Index of Multiple Deprivation (IMD) 2025 (see map overleaf)

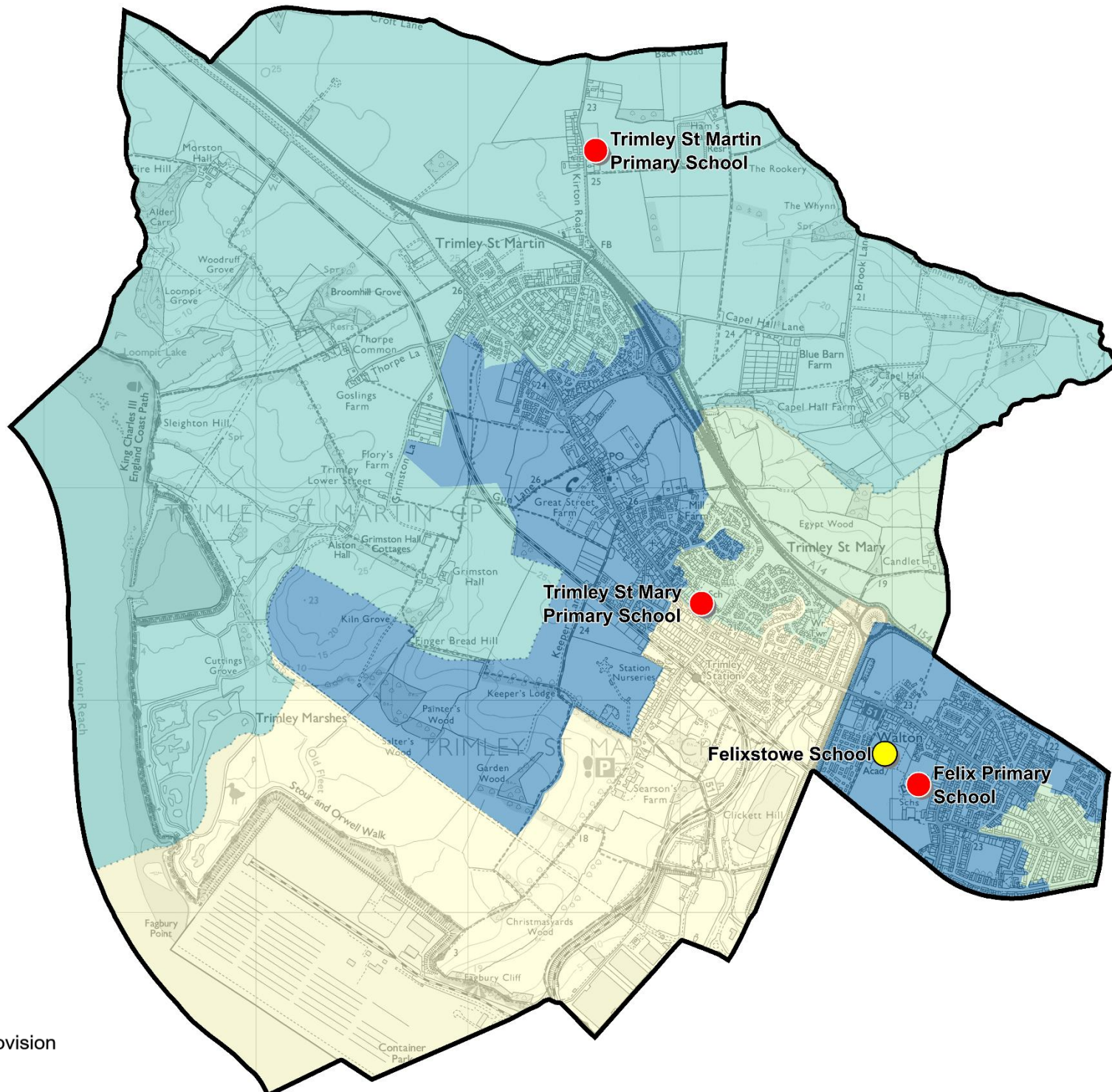
The IMD combines a number of indicators, chosen to cover a range of economic, social and housing issues, into a single deprivation score for each small area in England. This allows each area to be ranked relative to one another according to their level of deprivation. Small areas (Lower Super Output Areas, average population 1,700) are most commonly described as being in 1 of 5 quintile bands. The bottom quintile represents the 20% of areas that are the most deprived in England; these are shaded pale yellow on the map. The top quintile represents the least deprived areas in England and is shaded dark blue.

The Index is widely used to analyse patterns of deprivation, identify areas that would benefit from special initiatives or programmes and as a tool to determine eligibility for specific funding streams.

The chart below shows the percentage of the population of the division that live in areas ranked among each of the five quintiles of deprivation, alongside the district, county and England comparators.



- The 2025 IMD shows that deprivation levels in Walton and Trimleys are varied, with parts of the division ranked in four of the five deprivation quintiles.
- Half of the population of the division live in areas that are ranked in the second most deprived 20% of places in England (i.e. 20-40% most deprived).
- The other half of Walton and Trimleys is split fairly evenly between the least deprived, the second least deprived, and the middle quintiles.
- See the map overleaf for the distribution of IMD 2025 results across the division.



IMD 2025 quintile

- Least deprived 20%
- Next least deprived 20%
- Mid 20%
- Next most deprived 20%
- Most deprived 20%

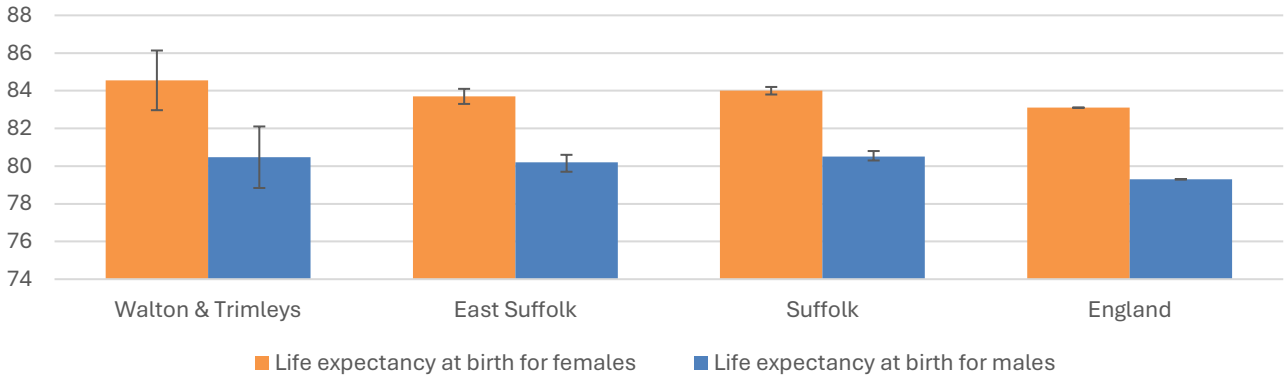
School Phase

- Primary
- Secondary
- Special
- Pupil referral unit/Alternative provision
- Nursery

Health

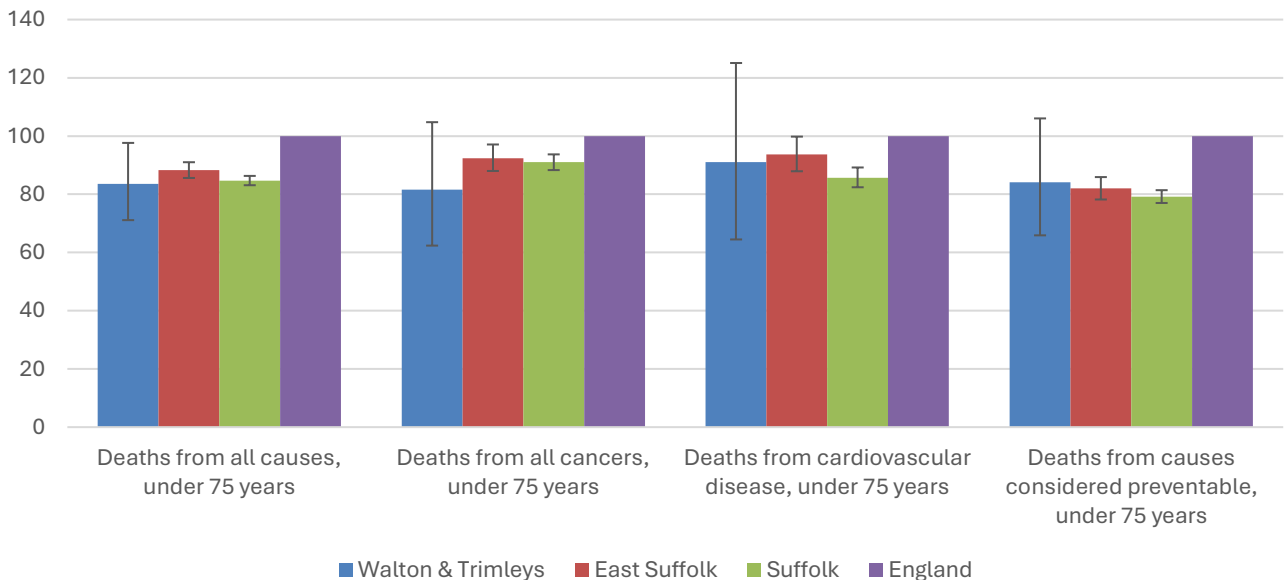
The local data used here is based on relatively small numbers. The confidence limits provide an indication of the reliability of the data. The 95% confidence intervals utilised on the chart provide a range within which there is 95% chance of the true result lying.

Life expectancy at birth



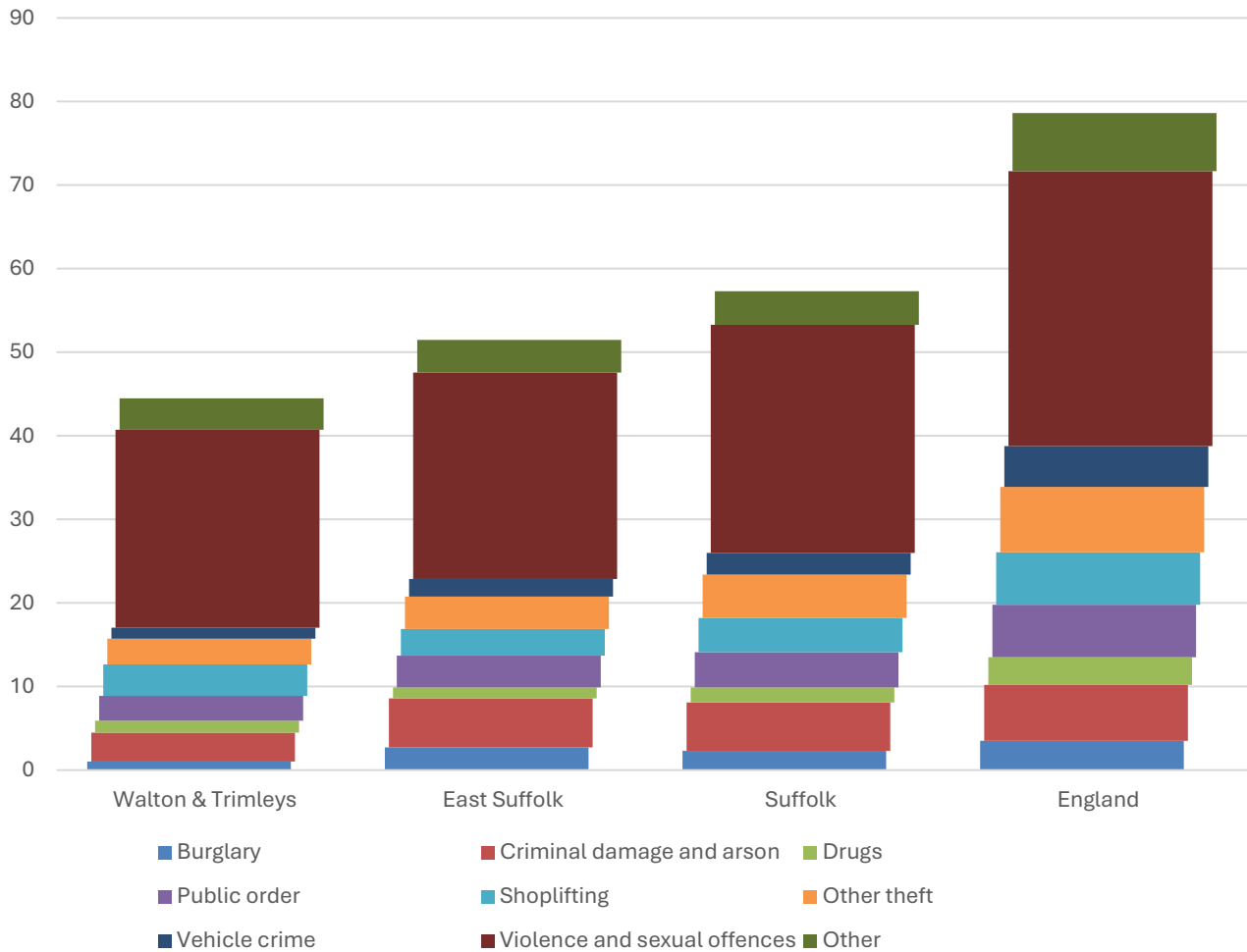
- Estimated life expectancy at birth for both females and males in Walton and Trimleys are statistically similar to the East Suffolk, Suffolk and England averages.
- The latest life expectancy at birth estimates for the division are 84.6 for females (about 1.5 years above the England average of 83.1), and 80.4 for males (compared to 79.3 nationally).

Deaths, under 75 years, standardised mortality ratio



- Estimated standardised mortality ratios for early deaths from all causes, cancers, circulatory disease and causes considered preventable in Walton and Trimleys are below 100, indicating that deaths in under 75s due to these causes are lower than in England.
- Confidence intervals around these estimates are wide for local data, but the SMR for deaths from all causes is statistically significantly lower than England.
- The standardised mortality ratio data shown here means that for every 100 early deaths from all causes across England as a whole, there are an estimated 84 comparable deaths in Walton and Trimleys.

Crime & Community Safety



- Crime levels in Walton and Trimleys are just below the district average, with 45 recorded crimes per 1,000 residents in the division in the 12 months to the end of January 2026, compared to 51 in East Suffolk and 57 countywide.
- All types of crime occur at a broadly similar in the division to the district average.
- By far the most common type of crime recorded during this period was violence and sexual offences, which accounted for just over half of all recorded crimes in the division.

Additional Information

Parishes in Division

Felixstowe (part)
 Trimley St. Martin
 Trimley St. Mary

Data sources

Category	Indicator	Source
Demographic Profile	Quinary population table 2024	ONS 2024 mid-year population estimates
	Population pyramid 2024	ONS 2024 mid-year population estimates
	Ethnicity 2021	ONS 2021 Census
Economy	Employment by broad industrial sector 2024	ONS Business Register and Employment Survey via NOMIS
Labour market	Claimant count: The number of people claiming Jobseeker's Allowance plus those who claim Universal Credit who are out of work (% 16-64 population) January 2021-February 2026	DWP via NOMIS
Education	School information and attainment 2023-2025	Suffolk County Council CYP iHub
	% 16-17-year-olds NEET (Not in Employment, Education or Training) March 2021 to February 2026	Suffolk County Council CYP iHub via the Suffolk Observatory
Deprivation	Index of Multiple Deprivation 2025	Ministry of Housing, Communities and Local Government
Health	Life expectancy at birth 2016-2020 (2018-2020 for comparator areas)	Office for Health Improvement and Disparities
Health	Standardised mortality ratio for deaths from all causes, cancer, cardiovascular disease, and from causes considered preventable (under 75 years), 2016-2020 (2019-2023 for comparator areas). The standardised mortality ratio is the ratio of observed deaths in the study group to expected deaths in the general population	Office for Health Improvement and Disparities
Community Safety	Recorded crime rate per 1,000 resident population February 2025 to January 2026	Data.police.uk via the Suffolk Observatory

For more data and information about Walton and Trimleys Electoral Division, see the Suffolk Observatory www.suffolkobservatory.info

