

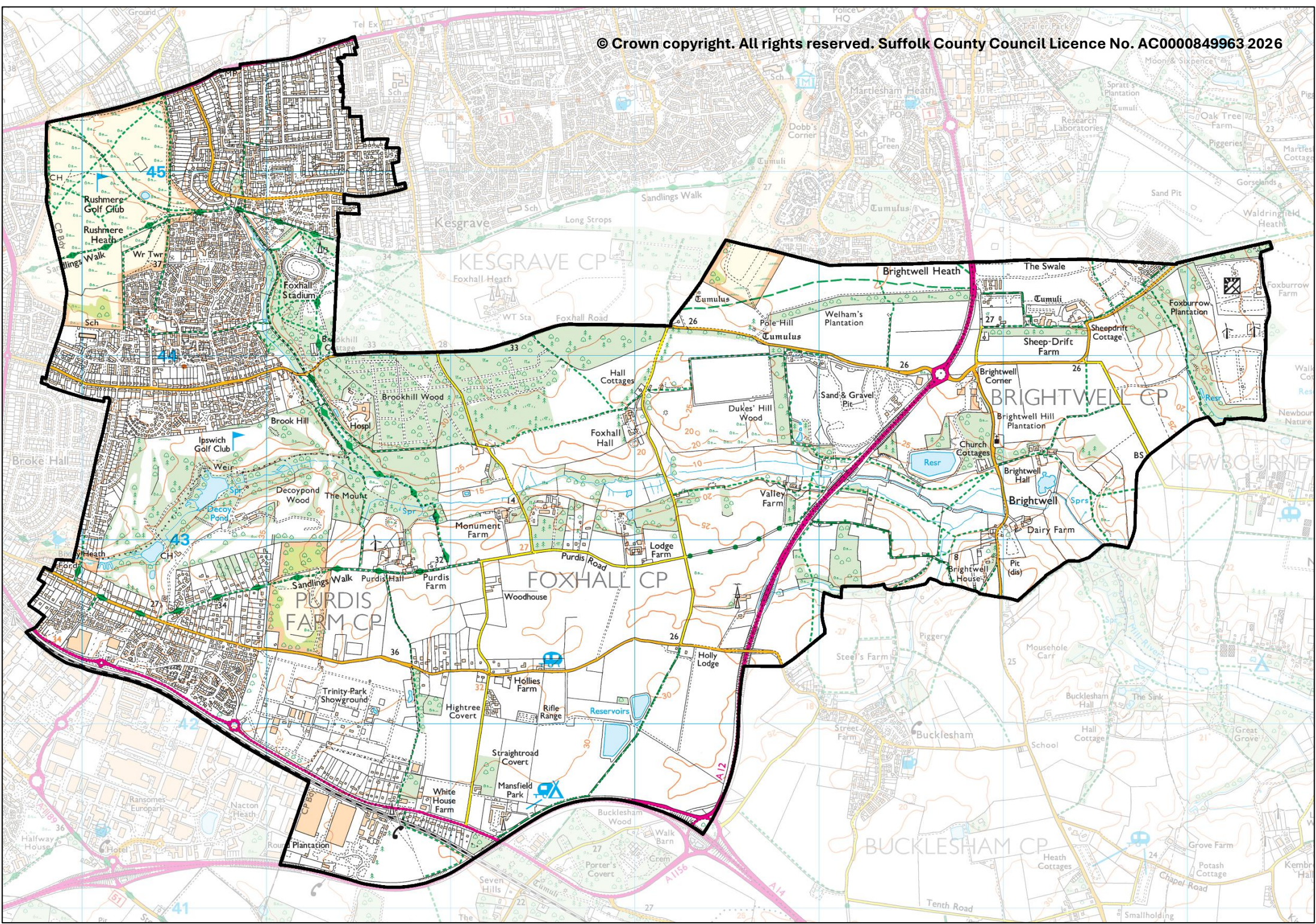
Rushmere St Andrew

County Electoral Division profile

May 2026

This division comprises Rushmere St Andrew Ward in its entirety, and parts of Kesgrave, and Martlesham & Purdis Farm Wards





Contents

- Demographic Profile: Age & Ethnicity
- Economy and Labour Market
- Schools & NEET
- Index of Multiple Deprivation
- Health
- Crime & Community Safety
- Additional Information
- Data Sources

Electoral Division Profiles: an introduction

These profiles have been produced to support elected members, constituents and other interested parties in understanding the demographic, economic, social and educational profile of their neighbourhoods. We have used the latest data available at the time of publication.

Much more data is available from national and local sources than is captured here, but it is hoped that the profile will be a useful starting point for discussion, where local knowledge and experience can be used to flesh out and illuminate the information presented here.

The profile can be used to help look at some fundamental questions e.g.

- Does the age profile of the population match or differ from the national profile?
- Is there evidence of the ageing profile of the county in all the wards in the Division or just some?
- How diverse is the community in terms of ethnicity?
- What is the impact of deprivation on families and residents?
- Does there seem to be a link between deprivation and school performance?
- What is the breakdown of employment sectors in the area?
- Is it a relatively healthy area compared to the rest of the district or county?
- What sort of crime is prevalent in the community?

A vast amount of additional data is available on the **Suffolk Observatory**

www.suffolkobservatory.info

The Suffolk Observatory is a free online resource that contains all Suffolk's vital statistics; it is the one-stop-shop for information and intelligence about Suffolk. Through data, reports and maps, the Suffolk Observatory provides a comprehensive picture of the County. It is a great source for useful facts and figures that can be used for writing reports and presentations, informing strategic and business planning, preparing funding applications or supporting academic research. Data is presented around the key themes of population, children and young people, health and social care, housing, crime and community safety, deprivation, economy and employment and environment. All areas of the county are covered, right down to district, electoral division, ward and parish level, with information easily accessible in a variety of formats. You can also build your own reports for custom areas.

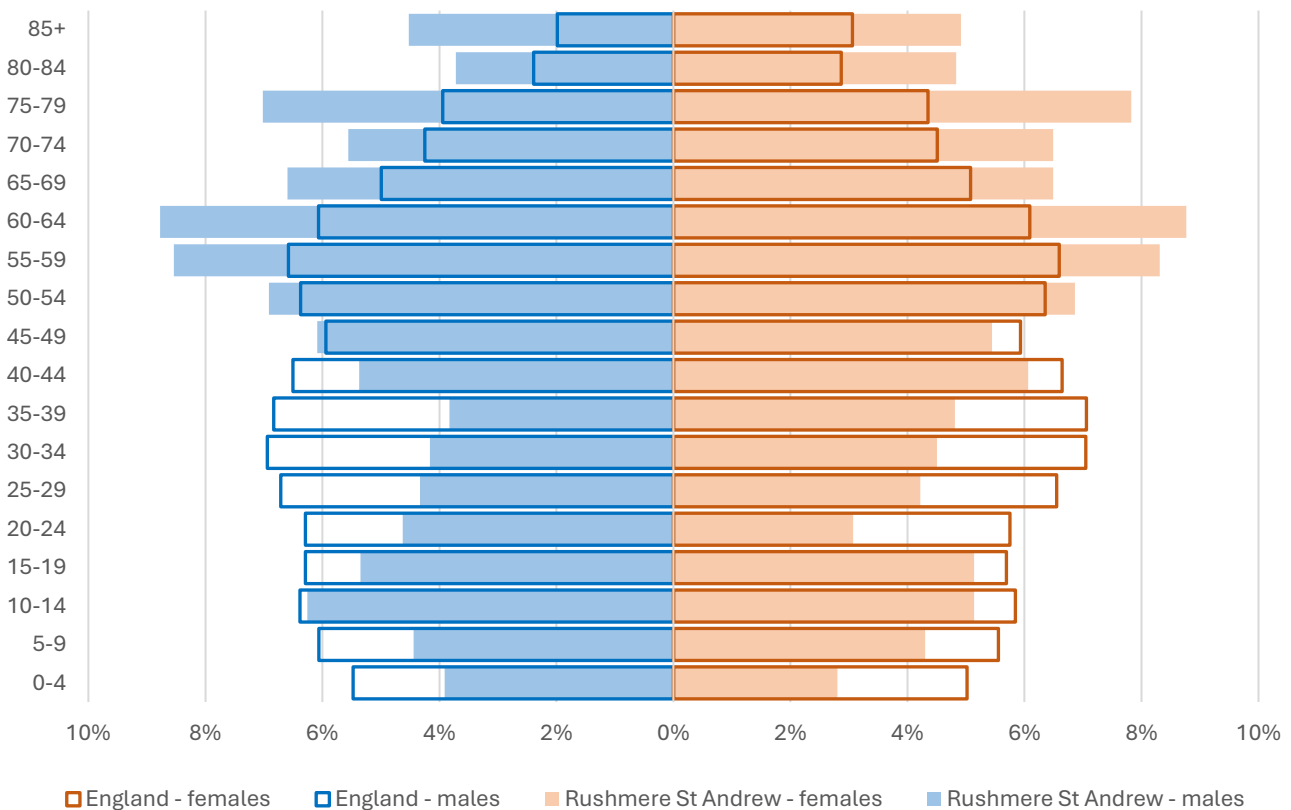
Technical Notes:

1. Where electoral divisions do not exactly match the boundaries at which the data is available (e.g. ward, Output Area or Lower Super Output Area), we have adopted a "best-fit" approach to produce a dataset.
2. District, county and national level data is provided where possible to provide a context for comparisons.

Demographic Profile - Age

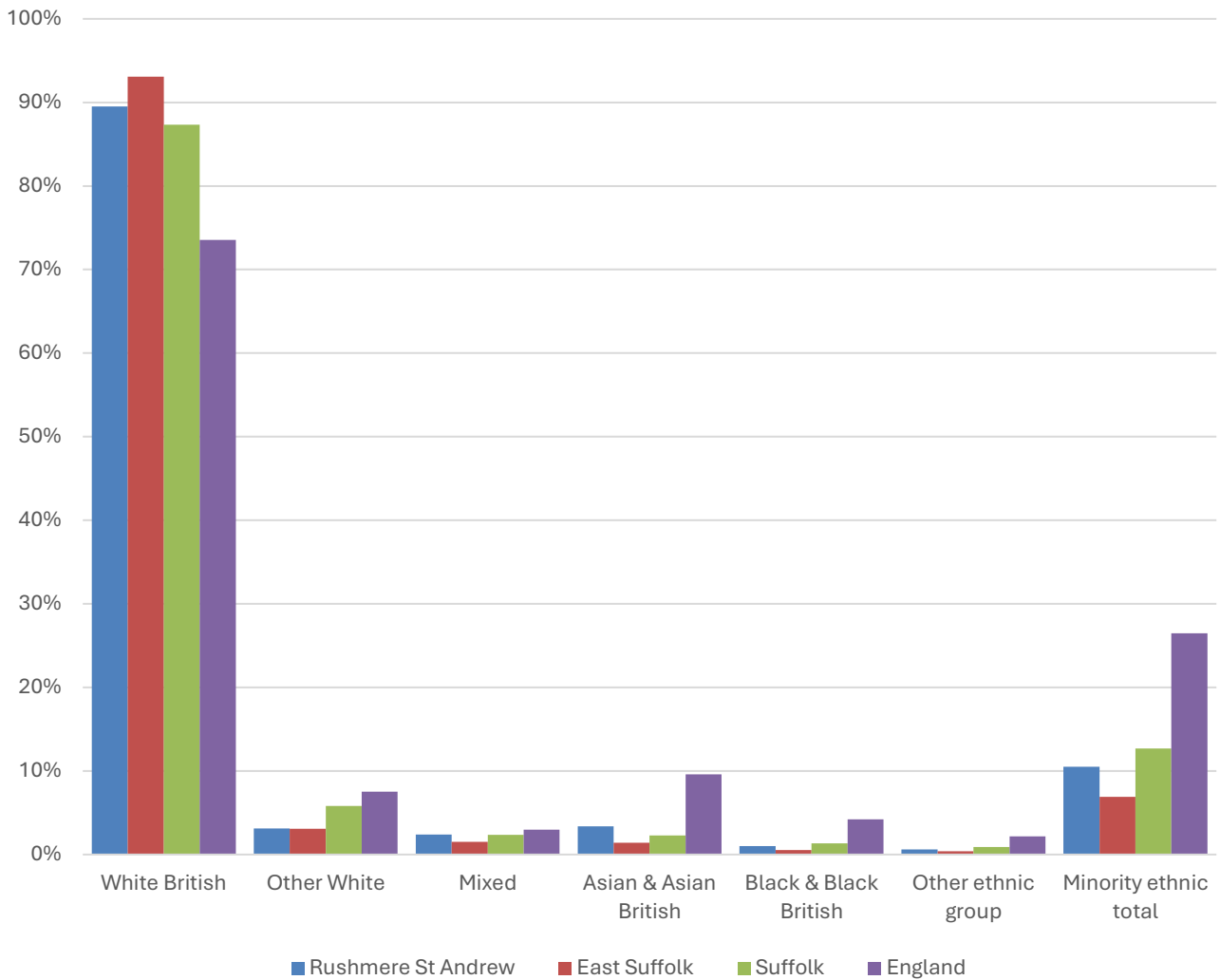
In mid-2024, the estimated population of Rushmere St Andrew stood at 9,614, a decrease of 0.3% over the past decade. The age structure of the component wards and the division as a whole is set out below.

	Rushmere St Andrew Division	Rushmere St Andrew Ward	Kesgrave Ward	Martlesham & Purdis Farm Ward
All Ages	9,614	4,454	2,796	2,364
0-4	322	146	94	82
5-9	420	218	105	97
10-14	547	287	137	123
15-19	504	247	133	124
20-24	369	184	84	101
25-29	411	199	97	115
30-34	417	153	132	132
35-39	416	198	123	95
40-44	550	241	152	157
45-49	554	289	131	134
50-54	662	331	157	174
55-59	810	390	201	219
60-64	843	392	232	219
65-69	629	272	201	156
70-74	580	252	206	122
75-79	714	332	264	118
80-84	412	155	170	87
85+	454	168	177	109



- The age pyramid for Rushmere St Andrew division shows a considerably higher proportion of people aged 50 and over than in England as a whole.
- The most common age group in the division is 60-64-year-olds (8.8% of the local population), followed by 55-59-year-olds (8.4%), and 75-79-year-olds (7.4%).
- Just under 30% of the population of Rushmere St Andrew is of retirement age.
- There is a particularly low proportion of young adults aged between 20 and 39 in the division.

Demographic Profile - Ethnicity

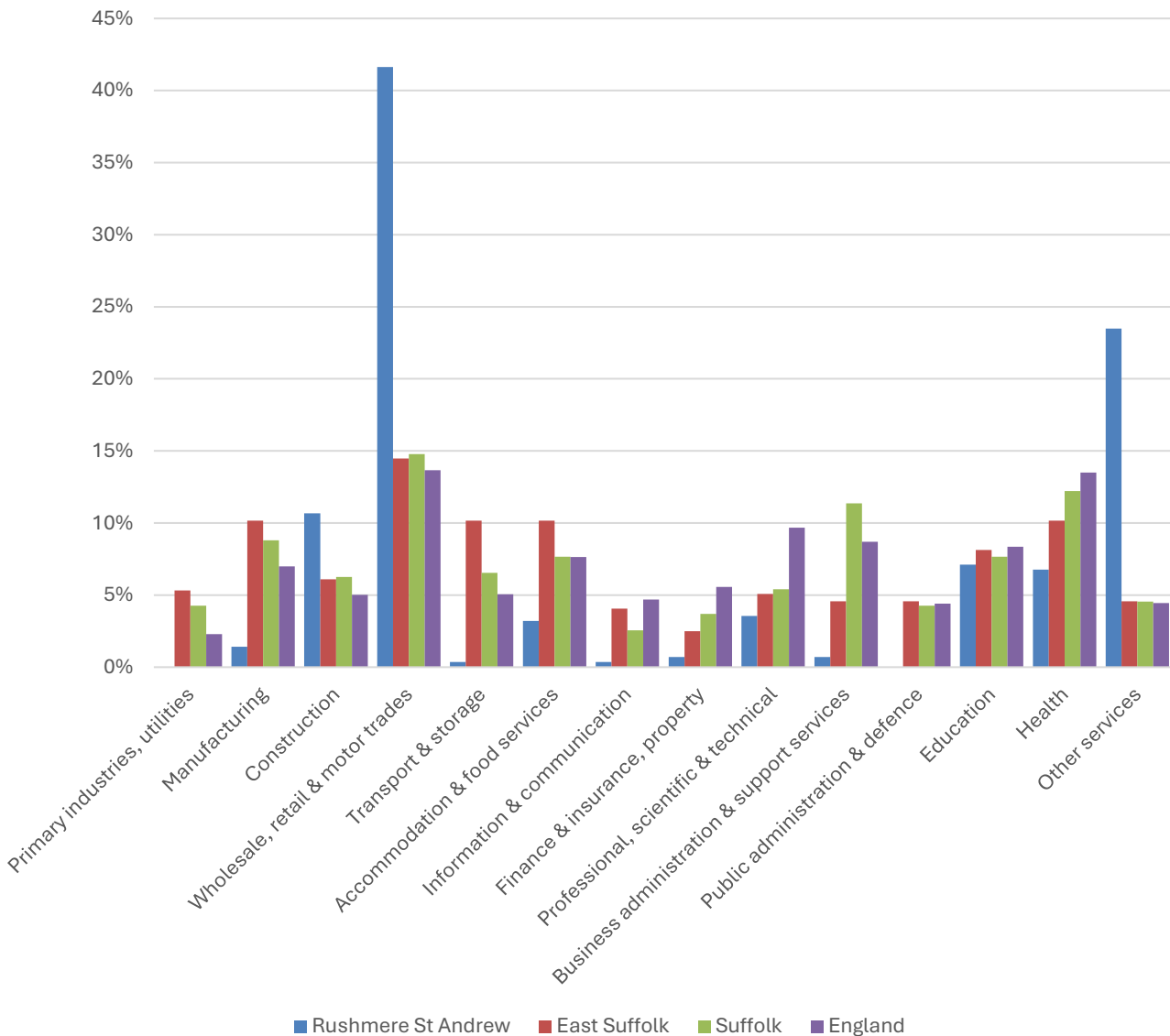


- According to the latest data (2021 Census), 89.5% of the population of Rushmere St Andrew are White British.
- There were around 1,000 (10.5%) people of minority ethnic origin in the division.
- Rushmere St Andrew has significant Asian/Asian British and Mixed/multiple ethnic group communities, that account for a larger proportion of the local population than is the case in Suffolk overall.

	All people		White British		Other White		Mixed		Asian and Asian British		Black and Black British		Other Ethnic Group		Total minority ethnic population	
	Count	%	Count	%	Count	%	Count	%	Count	%	Count	%	Count	%	Count	%
Rushmere St Andrew	9,562		8,558	89.5	299	3.1	227	2.4	323	3.4	96	1.0	59	0.6	1,004	10.5
East Suffolk	246,060		229,063	93.1	7,564	3.1	3,707	1.5	3,447	1.4	1,357	0.6	922	0.4	16,997	6.9
Suffolk	760,687		664,205	87.3	44,066	5.8	17,807	2.3	17,483	2.3	10,168	1.3	6,958	0.9	96,482	12.7
England				73.5		7.5		3.0		9.6		4.2		2.2		26.5

Economy

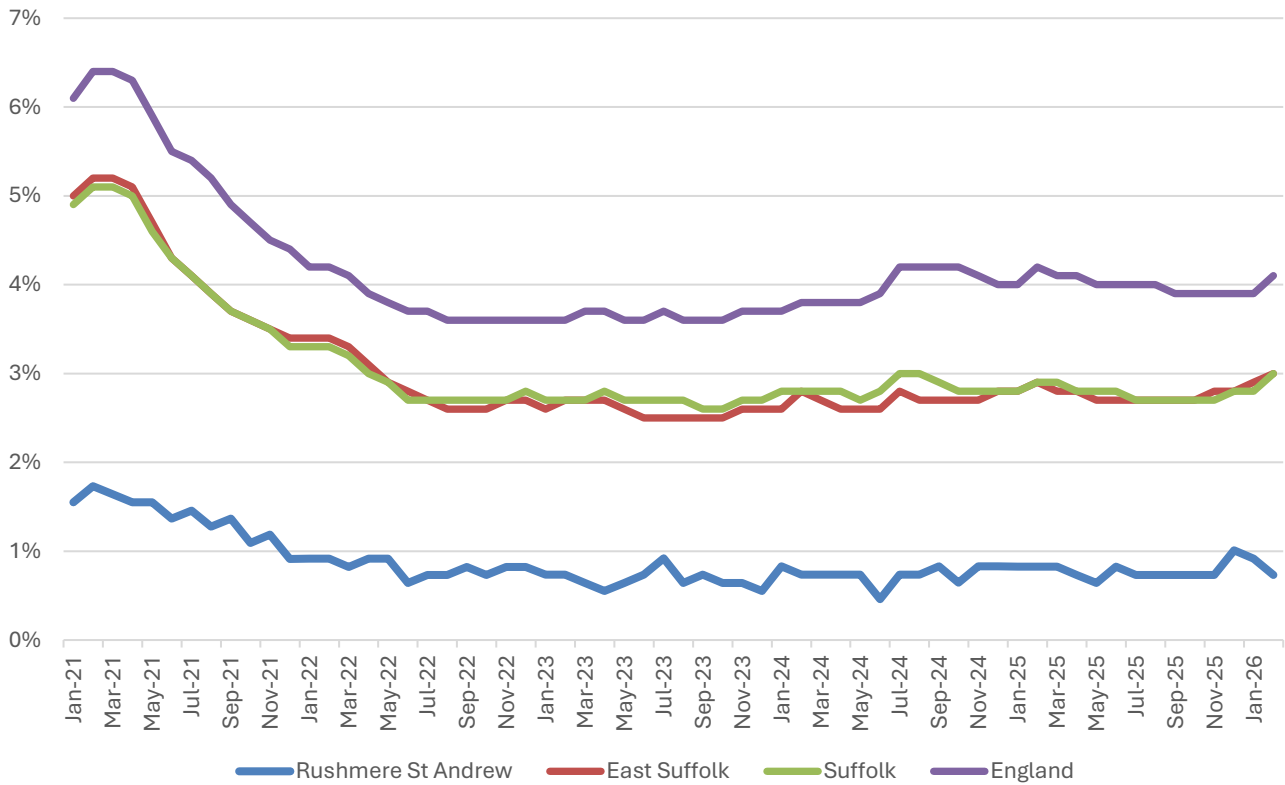
There are around 1,400 people employed in Rushmere St Andrew.



- Wholesale, retail and motor trades and other services are the most important sectors in Rushmere St Andrew in terms of job numbers.
- Wholesale, retail and motor trades is one of the largest sectors in most parts of Suffolk, accounting for 15% of jobs countywide, but in Rushmere St Andrew it provides almost three times that proportion of jobs.
- Other services makes up less than 5% of jobs in East Suffolk, Suffolk county and England overall, but provides almost a quarter of employment in Rushmere St Andrew.
- The other services sector primarily includes creative and cultural industries, and gambling, betting and sports activities.

Labour Market

Out-of-work benefit claimant rate



- The proportion of the working age population claiming of out-of-work benefits in Rushmere St Andrew has remained consistently low throughout the past five years. It only reached a peak of 1.7% during the COVID-19 pandemic, a third of the level seen in Suffolk overall.
- Since the start of 2022, the claimant rate in the division has been largely stable at between 0.6% and 0.9%.
- The claimant rate in Rushmere St Andrew is consistently around 2 percentage points below the district and county figures, and 3 percentage points below the national average.

Schools

School Information

Schools in the Division

Name	Phase	Academy Status	No. pupils	Average cohort size at:			
				Foundation Stage (age 4-7)	KS2 (age 7-11)	KS4 (age 14-16)	KS5 (age 16-18)
Broke Hall Community Primary School	Primary	AC	591	78	90		

Academy Status key: AS = Academy Sponsored, AC = Academy Converter, LA = LA Maintained, F = Free

Ofsted information

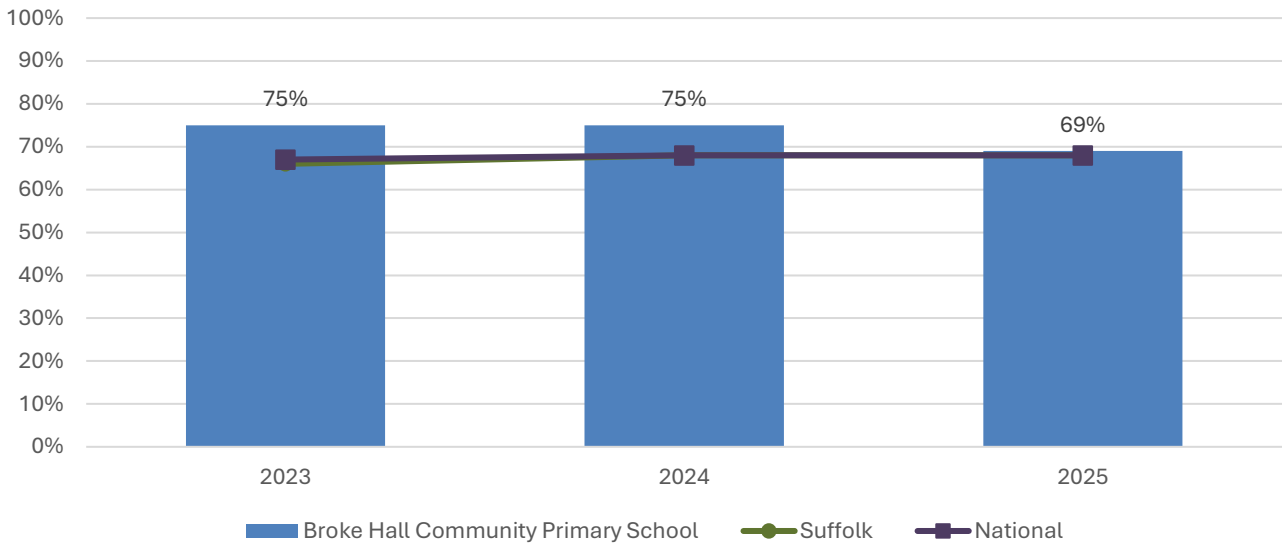
Name	Overall effectiveness	Effectiveness of leadership and management	Behaviour and attitudes	Personal development	Early years provision (if applicable)	Quality of education	Last inspection date
Broke Hall Community Primary School	2	2	2	2	2	2	13/06/2023

Code	Judgement	Code	Judgement
0	Insufficient evidence	SM	Special measures
1	Outstanding	8	Does not apply
2	Good	9	No judgement
3	Requires improvement	Null	No data available
4	Inadequate	Not judged	Not judged
SWK	Serious weaknesses	5	No overall grade

School Attainment

Foundation Stage Profile (reception)

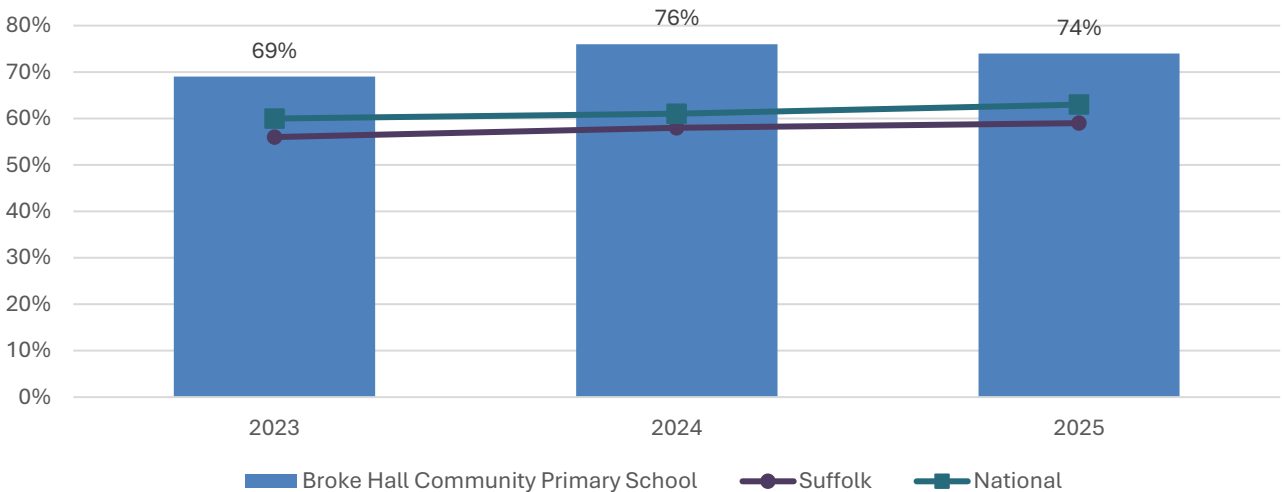
% pupils achieving Good Level of Development (GLD)



- Foundation Stage attainment at Broke Hall Community Primary School has been above the Suffolk and national average in each of the last three years.
- In 2025, 69% of pupils at Broke Hall achieved a Good Level of Development at Foundation Stage, one percentage point above the national figure.

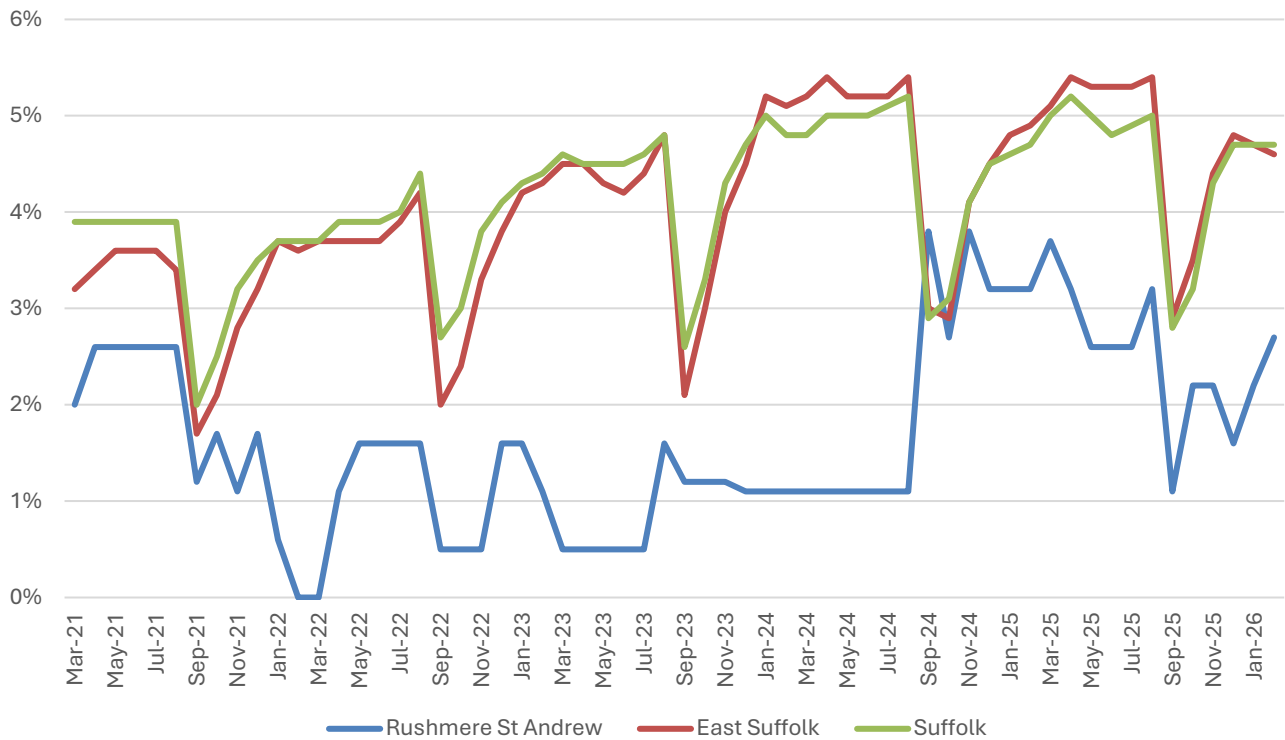
Key Stage 2 (age 11)

% pupils achieving the Expected Level or better in Reading, Writing and Mathematics



- Key stage 2 attainment at Broke Hall Community Primary School has been consistently well above the county and national average over the past three years.
- In 2025, 74% of pupils at Grove Primary achieved the expected level or better in reading, writing and mathematics, 11 percentage points above the national figure and 15 above the Suffolk average.

NEET % (Not in Education, Employment or Training)



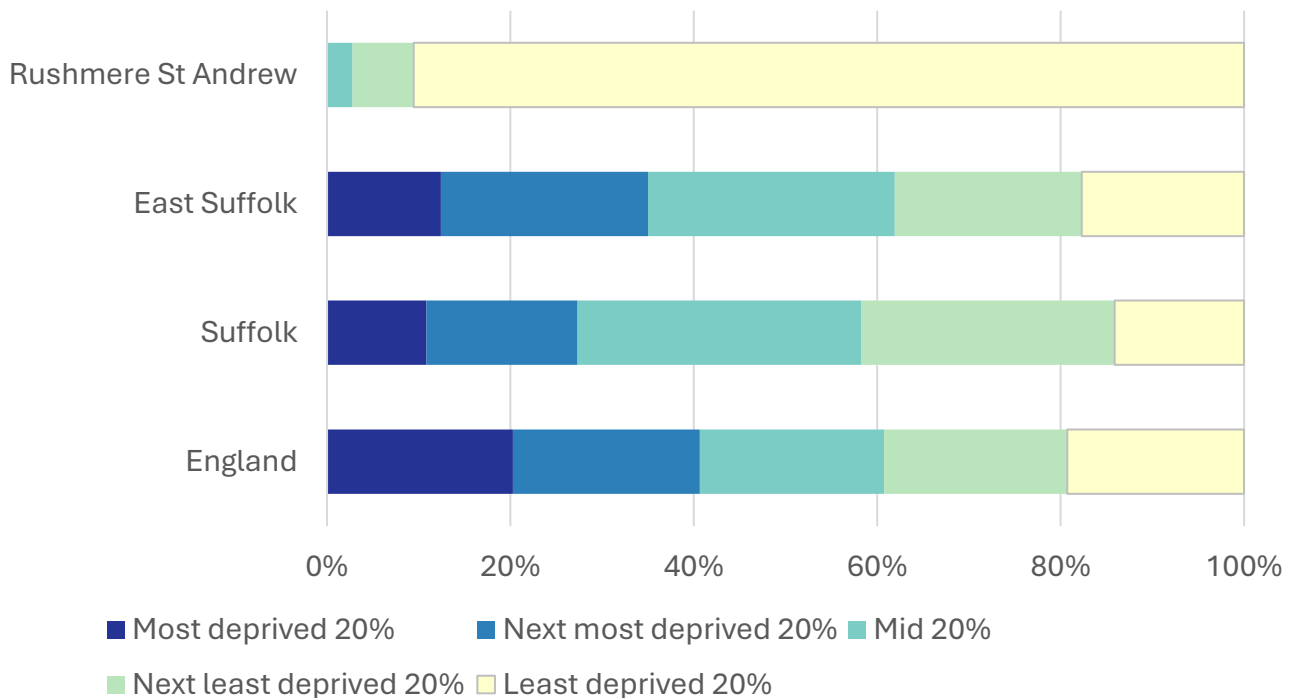
- In February 2026, 2.7% of 16–17-year-olds in Carlford were classified as NEET (not in education, employment or training).
- NEET levels fluctuate considerably according to the time of year and due to small numbers of 16-17-year-olds in the division, typically being at their lowest at the beginning of a new school year.
- In Rushmere St Andrew, NEET levels are almost invariably well below the district and county figures.

Index of Multiple Deprivation (IMD) 2025 (see map overleaf)

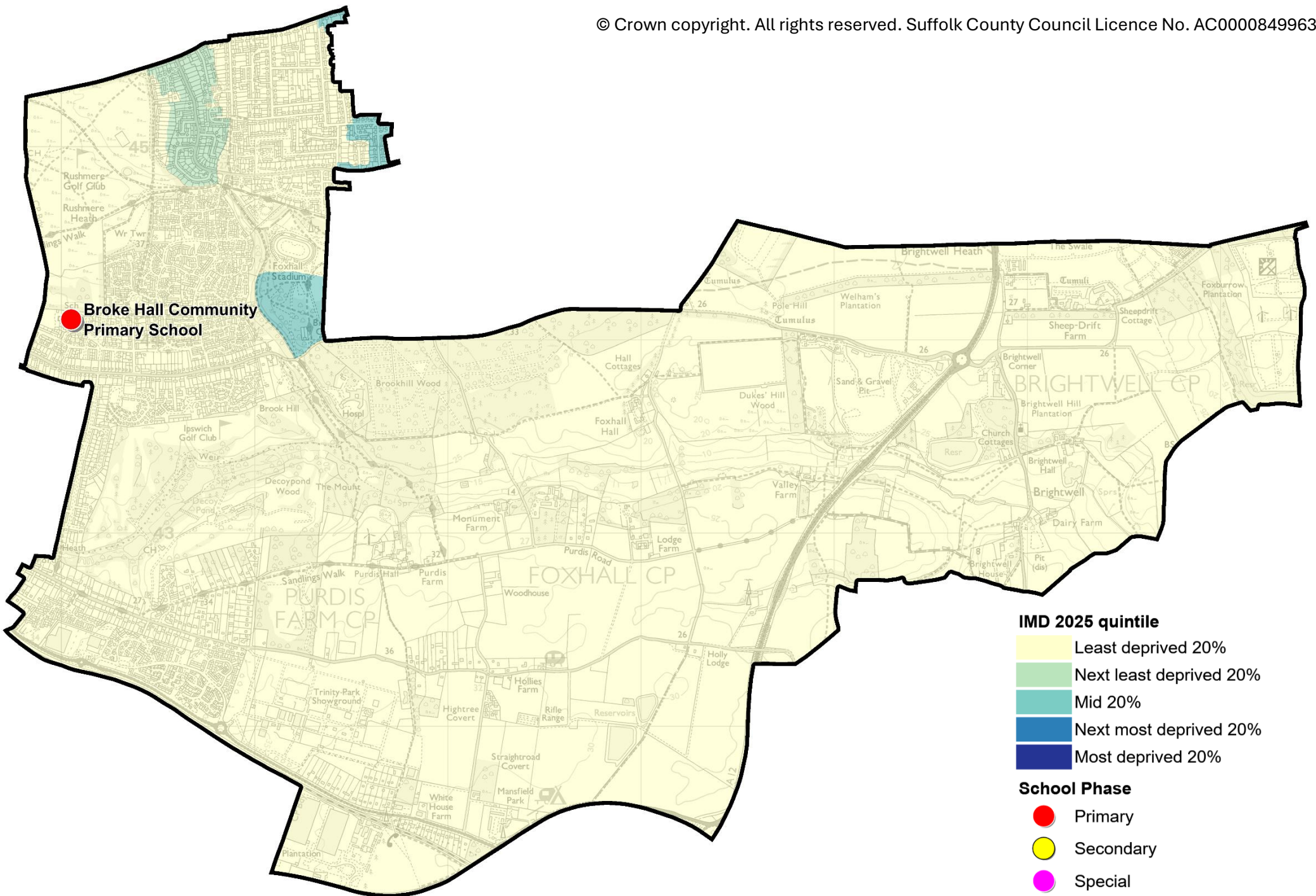
The IMD combines a number of indicators, chosen to cover a range of economic, social and housing issues, into a single deprivation score for each small area in England. This allows each area to be ranked relative to one another according to their level of deprivation. Small areas (Lower Super Output Areas, average population 1,700) are most commonly described as being in 1 of 5 quintile bands. The bottom quintile represents the 20% of areas that are the most deprived in England; these are shaded pale yellow on the map. The top quintile represents the least deprived areas in England and is shaded dark blue.

The Index is widely used to analyse patterns of deprivation, identify areas that would benefit from special initiatives or programmes and as a tool to determine eligibility for specific funding streams.

The chart below shows the percentage of the population of the division that live in areas ranked among each of the five quintiles of deprivation, alongside the district, county and England comparators.



- The 2025 IMD shows that relative deprivation levels are low across the vast majority of Rushmere St Andrew.
- Just over 90% of the population of the division live in areas that are ranked among the least deprived 20% in England.
- A small part of the division on the border with Kesgrave is ranked in the middle quintile of deprivation.
- See the map overleaf for the distribution of IMD 2025 results across the division.



IMD 2025 quintile

- Least deprived 20%
- Next least deprived 20%
- Mid 20%
- Next most deprived 20%
- Most deprived 20%

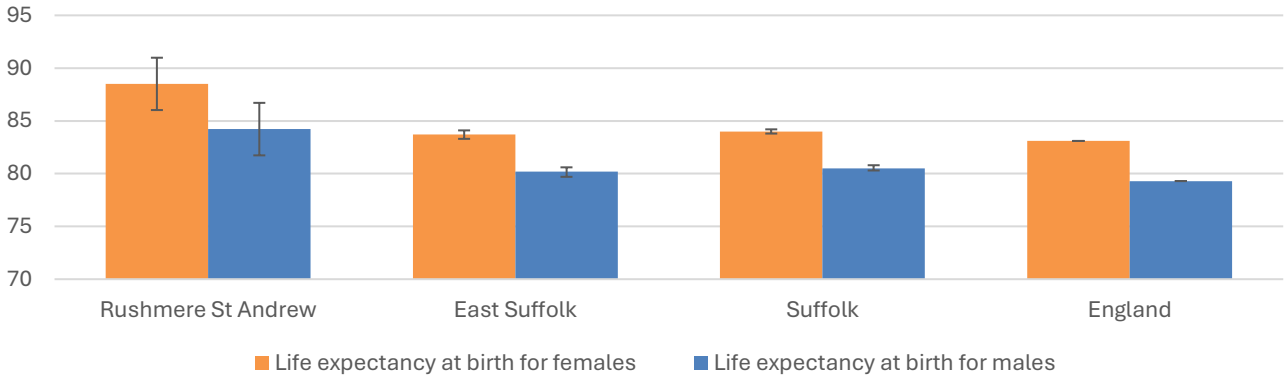
School Phase

- Primary
- Secondary
- Special
- Pupil referral unit/Alternative provision
- Nursery

Health

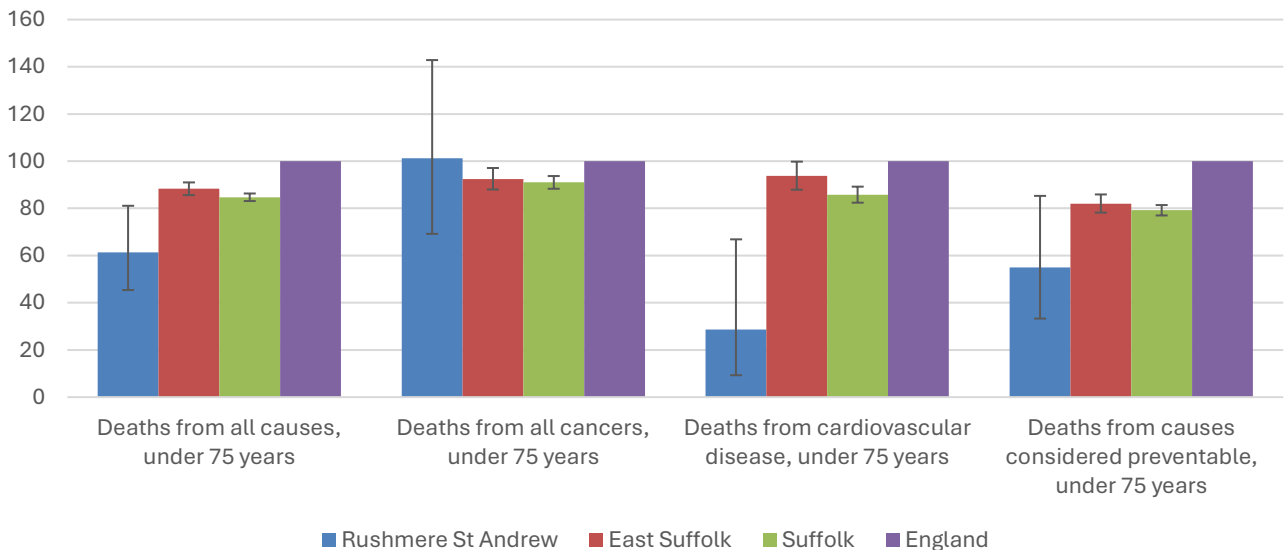
The local data used here is based on relatively small numbers. The confidence limits provide an indication of the reliability of the data. The 95% confidence intervals utilised on the chart provide a range within which there is 95% chance of the true result lying.

Life expectancy at birth



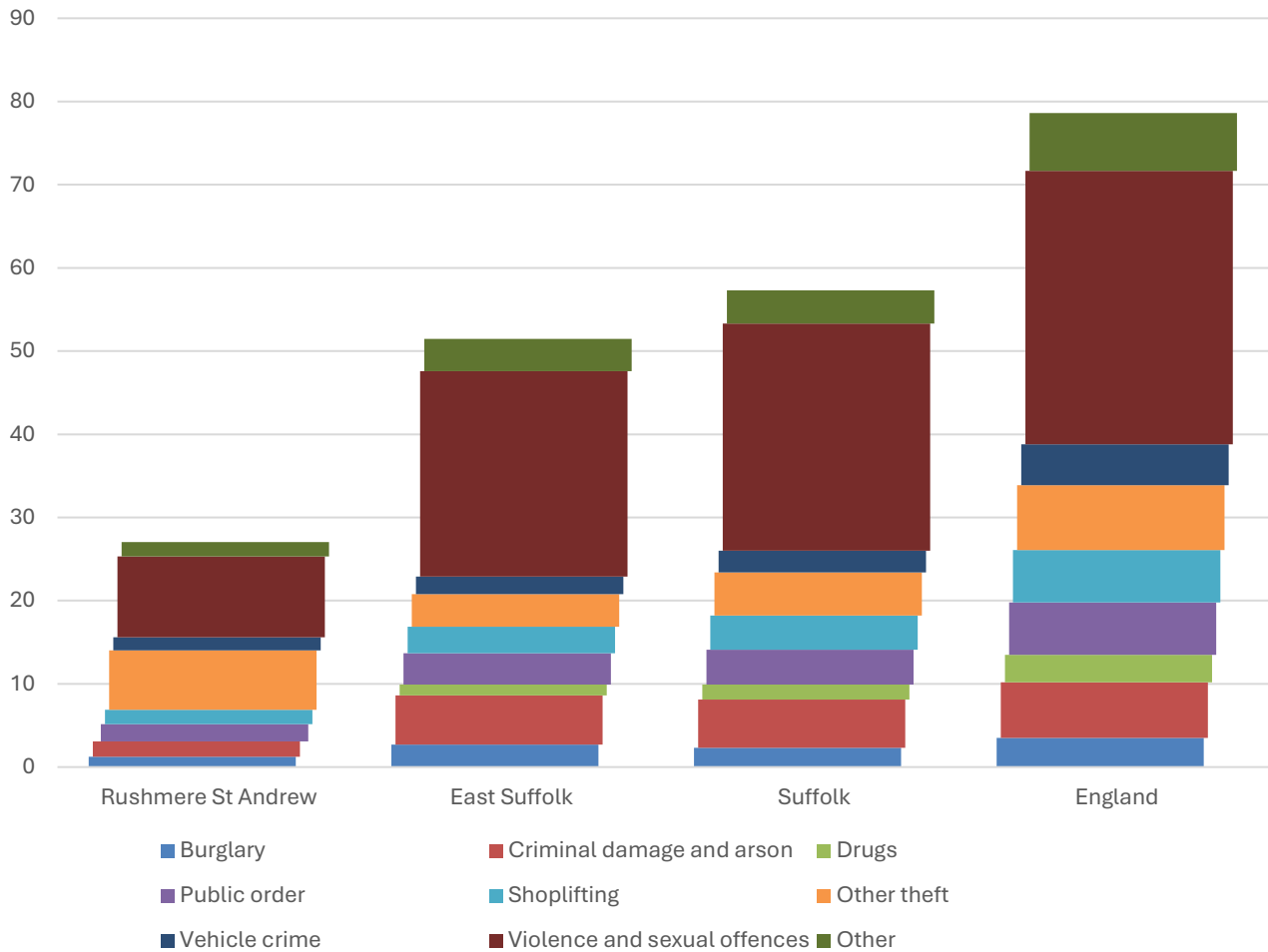
- Estimated life expectancy at birth for both females and males in Rushmere St Andrew is statistically significantly higher than the East Suffolk, Suffolk and England averages.
- The latest life expectancy at birth estimates for Rushmere St Andrew are 88.5 for females (the England average is 83.1), and 84.2 for males (compared to 79.3 nationally).

Deaths, under 75 years, standardised mortality ratio



- Estimated standardised mortality ratios for early deaths from all causes, cardiovascular disease and causes considered preventable in Rushmere St Andrew are below 100, indicating that deaths in under 75s due to these causes are lower than in England. All of these differences are statistically significantly better than the England average, and lower than the Suffolk average in the case of deaths from all causes and deaths from cardiovascular disease.
- The standardised mortality ratio data shown here means that for every 100 early deaths from all causes across England as a whole, there are an estimated 61 comparable deaths in Rushmere St Andrew.

Crime & Community Safety



- Crime levels in Rushmere St Andrew are low compared to both the district and county averages, with 27 crimes per 1,000 residents in the division in the 12 months to the end of January 2026, compared to 51 in East Suffolk and 57 countywide.
- All types of crime occur at a lower rate in the division than the district and county average with the exception of other theft offences. In Rushmere St Andrew, there were 7.1 other theft offences during this period for every 1,000 residents, compared to 3.9 across East Suffolk and 5.2 in Suffolk.
- The most common type of crime recorded during this period was violence and sexual offences, which accounted for about one third of all recorded crimes in the division.

Additional Information

Parishes in Division

Brightwell
Foxhall

Purdis Farm
Rushmere St. Andrew

Data sources

Category	Indicator	Source
Demographic Profile	Quinary population table 2024	ONS 2024 mid-year population estimates
	Population pyramid 2024	ONS 2024 mid-year population estimates
	Ethnicity 2021	ONS 2021 Census
Economy	Employment by broad industrial sector 2024	ONS Business Register and Employment Survey via NOMIS
Labour market	Claimant count: The number of people claiming Jobseeker's Allowance plus those who claim Universal Credit who are out of work (% 16-64 population) January 2021-February 2026	DWP via NOMIS
Education	School information and attainment 2023-2025	Suffolk County Council CYP iHub
	% 16-17-year-olds NEET (Not in Employment, Education or Training) March 2021 to February 2026	Suffolk County Council CYP iHub via the Suffolk Observatory
Deprivation	Index of Multiple Deprivation 2025	Ministry of Housing, Communities and Local Government
Health	Life expectancy at birth 2016-2020 (2018-2020 for comparator areas)	Office for Health Improvement and Disparities
Health	Standardised mortality ratio for deaths from all causes, cancer, cardiovascular disease, and from causes considered preventable (under 75 years), 2016-2020 (2019-2023 for comparator areas). The standardised mortality ratio is the ratio of observed deaths in the study group to expected deaths in the general population	Office for Health Improvement and Disparities
Community Safety	Recorded crime rate per 1,000 resident population February 2025 to January 2026	Data.police.uk via the Suffolk Observatory

For more data and information about Rushmere St Andrew Electoral Division, see the Suffolk Observatory www.suffolkobservatory.info

