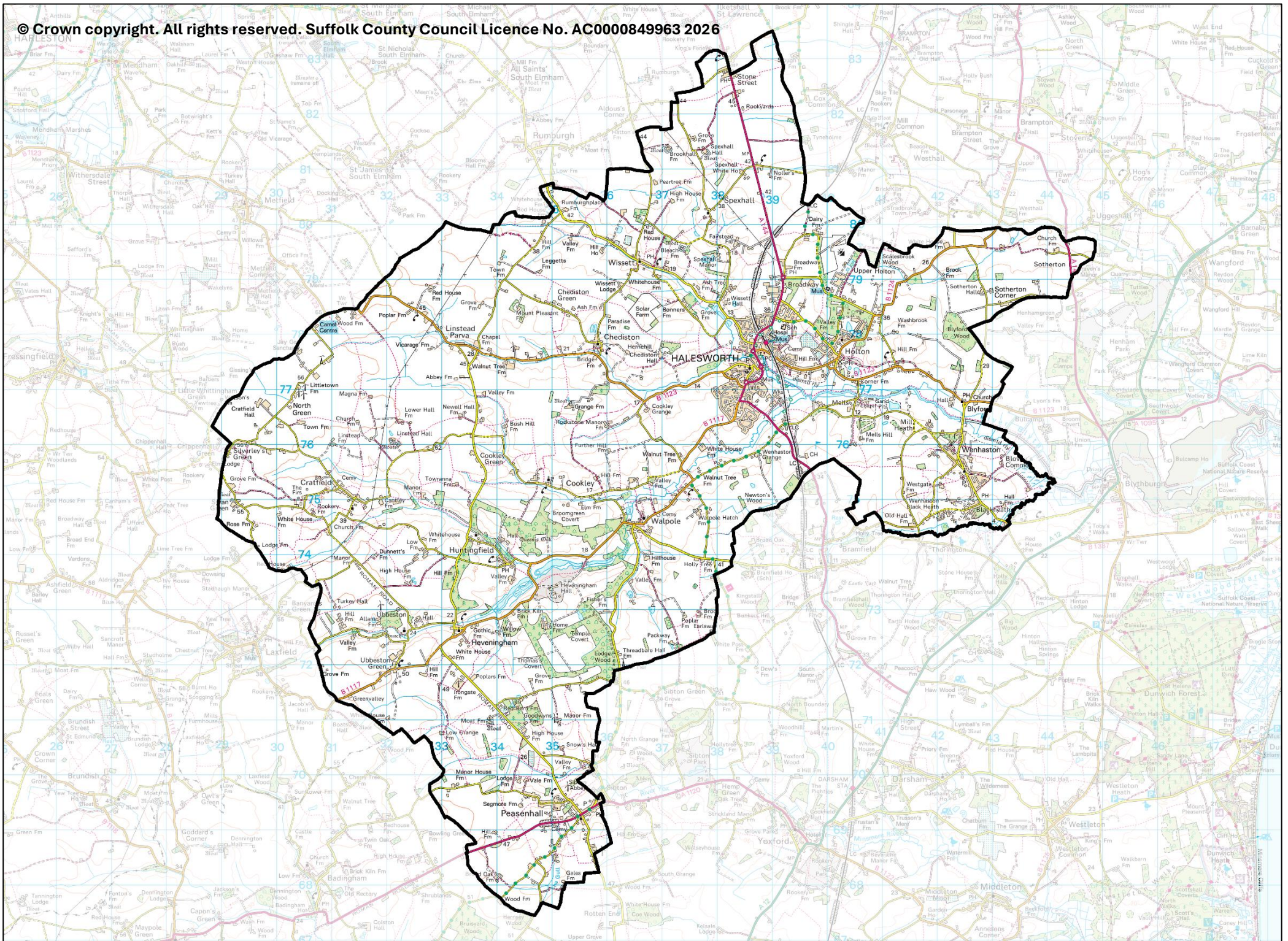


# Halesworth

County Electoral Division profile  
May 2026

This division comprises parts of Halesworth & Blything and Kelsale & Yoxford  
Wards





# Contents

- Demographic Profile: Age & Ethnicity
- Economy and Labour Market
- Schools & NEET
- Index of Multiple Deprivation
- Health
- Crime & Community Safety
- Additional Information
- Data Sources

# Electoral Division Profiles: an introduction

These profiles have been produced to support elected members, constituents and other interested parties in understanding the demographic, economic, social and educational profile of their neighbourhoods. We have used the latest data available at the time of publication.

Much more data is available from national and local sources than is captured here, but it is hoped that the profile will be a useful starting point for discussion, where local knowledge and experience can be used to flesh out and illuminate the information presented here.

The profile can be used to help look at some fundamental questions e.g.

- Does the age profile of the population match or differ from the national profile?
- Is there evidence of the ageing profile of the county in all the wards in the Division or just some?
- How diverse is the community in terms of ethnicity?
- What is the impact of deprivation on families and residents?
- Does there seem to be a link between deprivation and school performance?
- What is the breakdown of employment sectors in the area?
- Is it a relatively healthy area compared to the rest of the district or county?
- What sort of crime is prevalent in the community?

A vast amount of additional data is available on the **Suffolk Observatory**

[www.suffolkobservatory.info](http://www.suffolkobservatory.info)

The Suffolk Observatory is a free online resource that contains all Suffolk's vital statistics; it is the one-stop-shop for information and intelligence about Suffolk. Through data, reports and maps, the Suffolk Observatory provides a comprehensive picture of the County. It is a great source for useful facts and figures that can be used for writing reports and presentations, informing strategic and business planning, preparing funding applications or supporting academic research. Data is presented around the key themes of population, children and young people, health and social care, housing, crime and community safety, deprivation, economy and employment and environment. All areas of the county are covered, right down to district, electoral division, ward and parish level, with information easily accessible in a variety of formats. You can also build your own reports for custom areas.

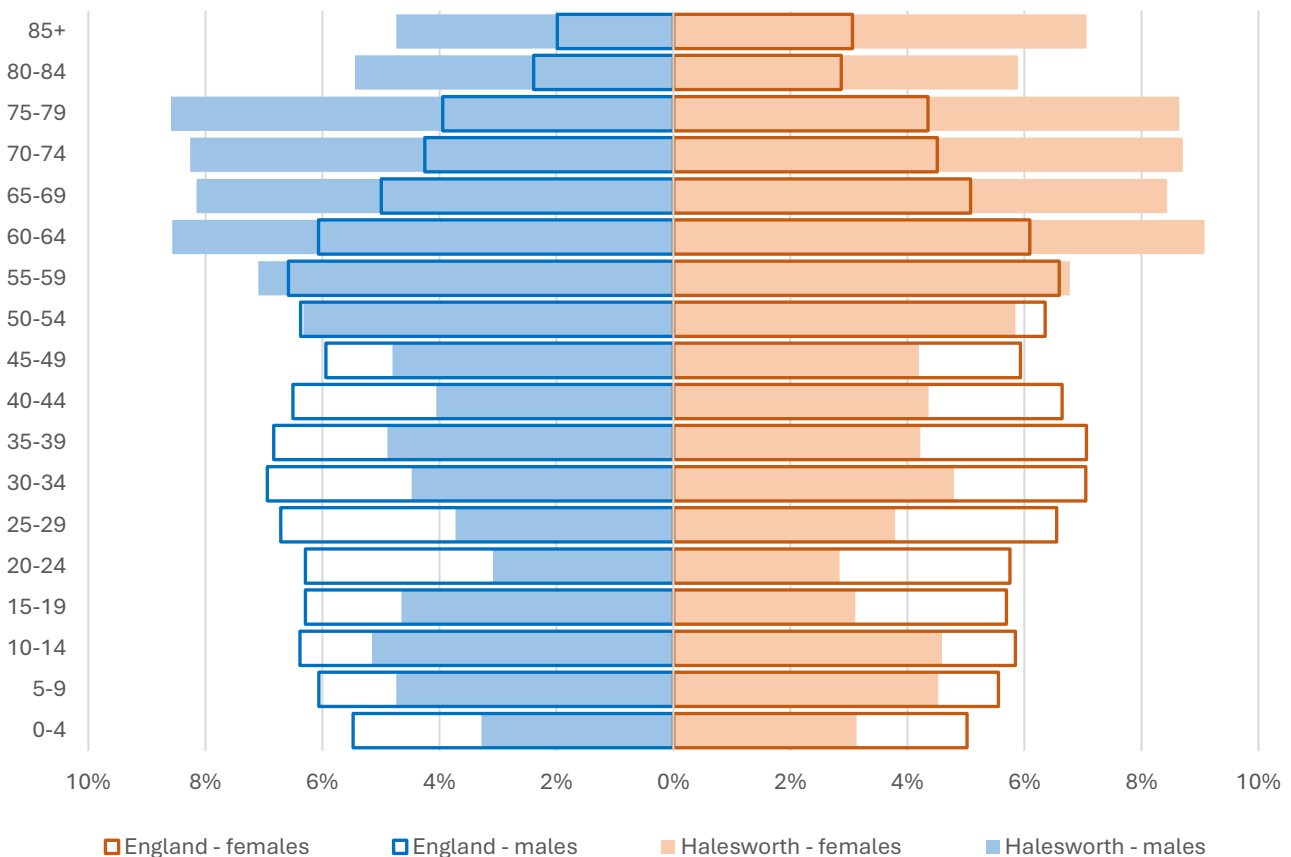
## Technical Notes:

1. Where electoral divisions do not exactly match the boundaries at which the data is available (e.g. ward, Output Area or Lower Super Output Area), we have adopted a "best-fit" approach to produce a dataset.
2. District, county and national level data is provided where possible to provide a context for comparisons.

# Demographic Profile - Age

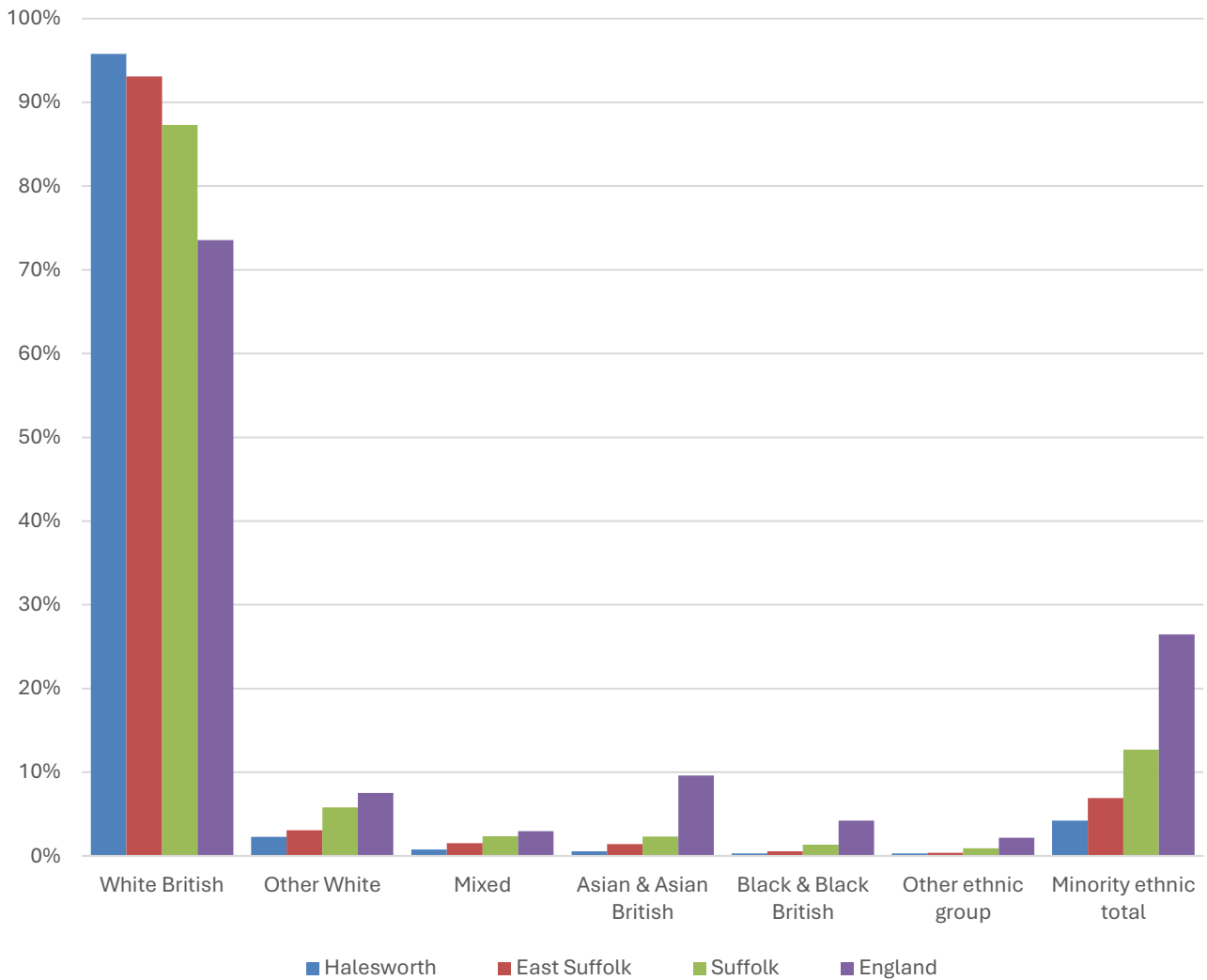
In mid-2024, the estimated population of Halesworth stood at 9,398, an increase of 3.4% over the past decade. The age structure of the component wards and the division as a whole is set out below.

	Halesworth Division	Halesworth & Blything Ward	Kelsale & Yoxford Ward
<b>All Ages</b>	<b>9,398</b>	<b>7,458</b>	<b>1,940</b>
<b>0-4</b>	<b>301</b>	<b>250</b>	<b>51</b>
<b>5-9</b>	<b>435</b>	<b>357</b>	<b>78</b>
<b>10-14</b>	<b>457</b>	<b>371</b>	<b>86</b>
<b>15-19</b>	<b>362</b>	<b>294</b>	<b>68</b>
<b>20-24</b>	<b>278</b>	<b>230</b>	<b>48</b>
<b>25-29</b>	<b>353</b>	<b>289</b>	<b>64</b>
<b>30-34</b>	<b>436</b>	<b>361</b>	<b>75</b>
<b>35-39</b>	<b>427</b>	<b>354</b>	<b>73</b>
<b>40-44</b>	<b>396</b>	<b>303</b>	<b>93</b>
<b>45-49</b>	<b>422</b>	<b>348</b>	<b>74</b>
<b>50-54</b>	<b>571</b>	<b>446</b>	<b>125</b>
<b>55-59</b>	<b>651</b>	<b>488</b>	<b>163</b>
<b>60-64</b>	<b>830</b>	<b>615</b>	<b>215</b>
<b>65-69</b>	<b>780</b>	<b>584</b>	<b>196</b>
<b>70-74</b>	<b>798</b>	<b>604</b>	<b>194</b>
<b>75-79</b>	<b>810</b>	<b>639</b>	<b>171</b>
<b>80-84</b>	<b>533</b>	<b>454</b>	<b>79</b>
<b>85+</b>	<b>558</b>	<b>471</b>	<b>87</b>



- The age pyramid for Halesworth division shows a considerably larger proportion of people aged 55 and over than in England as a whole.
- The most common age group in the division is 60-64-year-olds (8.9% of the local population), followed by 75-79-year-olds (8.6%), and 70-74-year-olds (8.5%).
- More than a third of the population of Halesworth (37%) is of retirement age.
- There is a lower-than-average proportion of all groups below the age of 55.

# Demographic Profile - Ethnicity

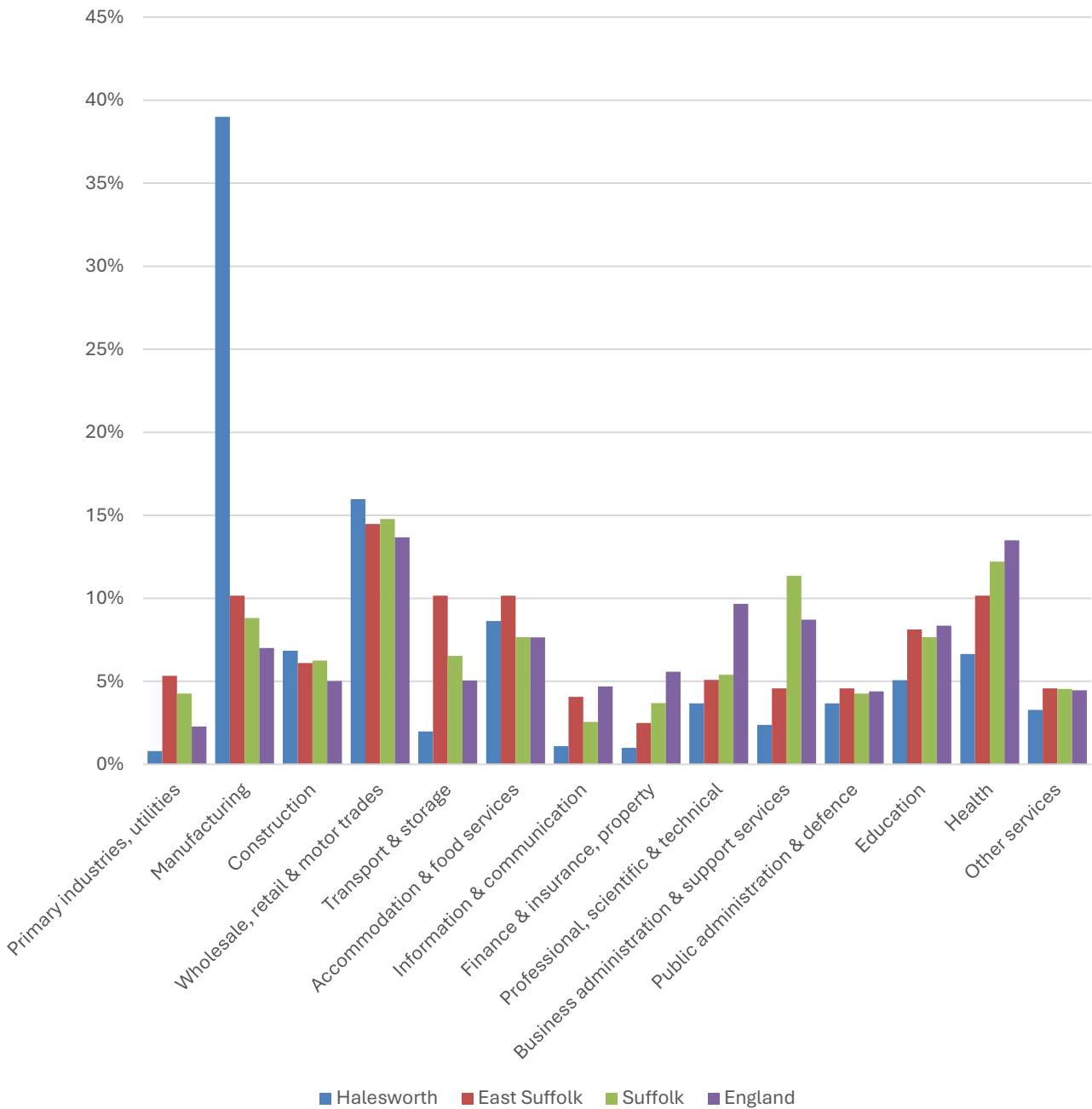


- According to the latest data (2021 Census), 95.8% of the population of Halesworth are White British.
- There were 388 (4.2%) people of minority ethnic origin in the division, less than a third of the proportion in Suffolk as a whole and around a sixth of the England average.
- Halesworth also has a less ethnically diverse population profile than East Suffolk district.

	All people		White British		Other White		Mixed		Asian and Asian British		Black and Black British		Other Ethnic Group		Total minority ethnic population	
	Count	%	Count	%	Count	%	Count	%	Count	%	Count	%	Count	%	Count	%
Halesworth	9,225		8,837	95.8	209	2.3	71	0.8	51	0.6	29	0.3	28	0.3	388	4.2
East Suffolk	246,060		229,063	93.1	7,564	3.1	3,707	1.5	3,447	1.4	1,357	0.6	922	0.4	16,997	6.9
Suffolk	760,687		664,205	87.3	44,066	5.8	17,807	2.3	17,483	2.3	10,168	1.3	6,958	0.9	96,482	12.7
England				73.5		7.5		3.0		9.6		4.2		2.2		26.5

# Economy

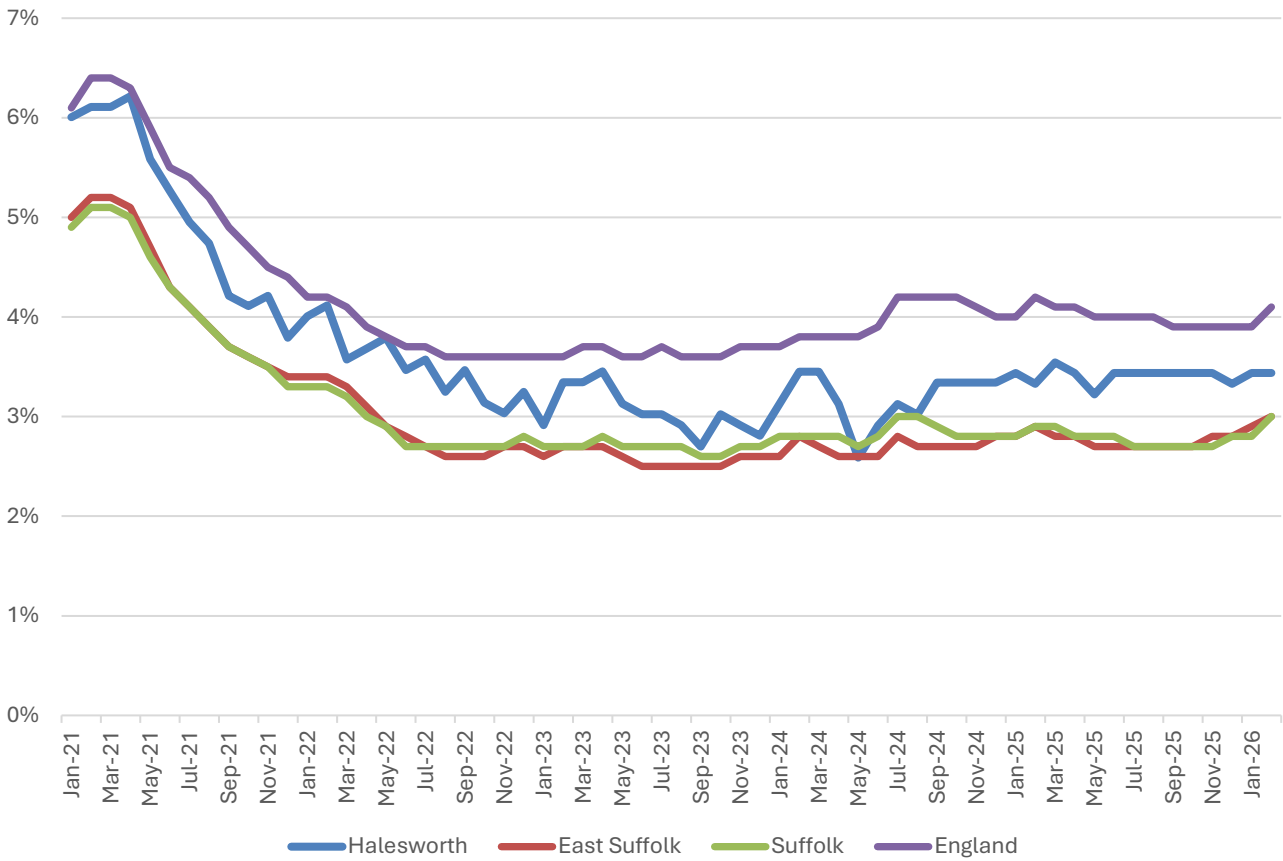
There are around 5,000 people employed in Halesworth.



- Manufacturing is the dominant sector in Halesworth in terms of employment.
- Almost 2 in every 5 jobs in the division is in the manufacturing sector, more than four times the proportion in Suffolk overall.
- The next most important sector in Halesworth is wholesale, retail and motor trades, which accounts for 16% of local jobs; a similar proportion to comparator areas of East Suffolk, Suffolk county and England.

# Labour Market

## Out-of-work benefit claimant rate



- In common with East Suffolk, Suffolk and England as a whole, Halesworth saw a decline in the proportion of the working age population claiming of out-of-work benefits during 2021 and into 2022 following a peak during the COVID-19 pandemic.
- Since then, the claimant rate in the division has seen some short-term fluctuations but has generally been around 3-3.5%.
- The claimant rate in Gunton tends to be around half a percentage point below the England figure, and a similar amount above the district and county benchmarks.

# Schools

## School Information

### Schools in the Division

Name	Phase	Academy Status	No. pupils	Average cohort size at:			
				Foundation Stage (age 4-7)	KS2 (age 7-11)	KS4 (age 14-16)	KS5 (age 16-18)
Edgar Sewter Community Primary School	Primary	AC	266	34	44		
Holton St Peter Community Primary School	Primary	AC	141	13	15		
Wenhaston Primary School	Primary	AC	93	12	12		

Academy Status key: AS = Academy Sponsored, AC = Academy Converter, LA = LA Maintained, F = Free

### Ofsted information

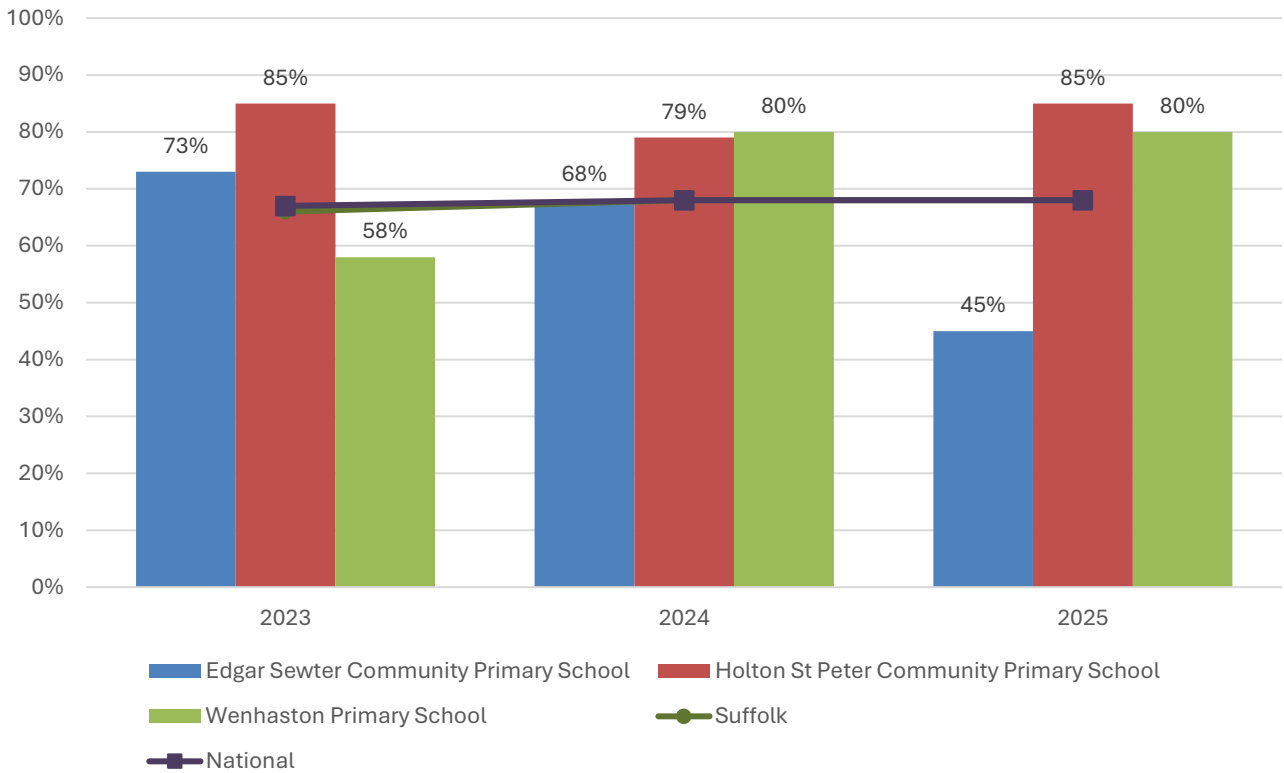
Name	Overall effectiveness	Effectiveness of leadership and management	Behaviour and attitudes	Personal development	Early years provision (if applicable)	Quality of education	Last inspection date
Edgar Sewter Community Primary School	2	2	2	2	2	2	03/07/2024
Holton St Peter Community Primary School	2	2	2	2	2	2	05/10/2021
Wenhaston Primary School	2	2	2	2	2	2	15/01/2020

Code	Judgement	Code	Judgement
0	Insufficient evidence	SM	Special measures
1	Outstanding	8	Does not apply
2	Good	9	No judgement
3	Requires improvement	Null	No data available
4	Inadequate	Not judged	Not judged
SWK	Serious weaknesses	5	No overall grade

# School Attainment

## Foundation Stage Profile (reception)

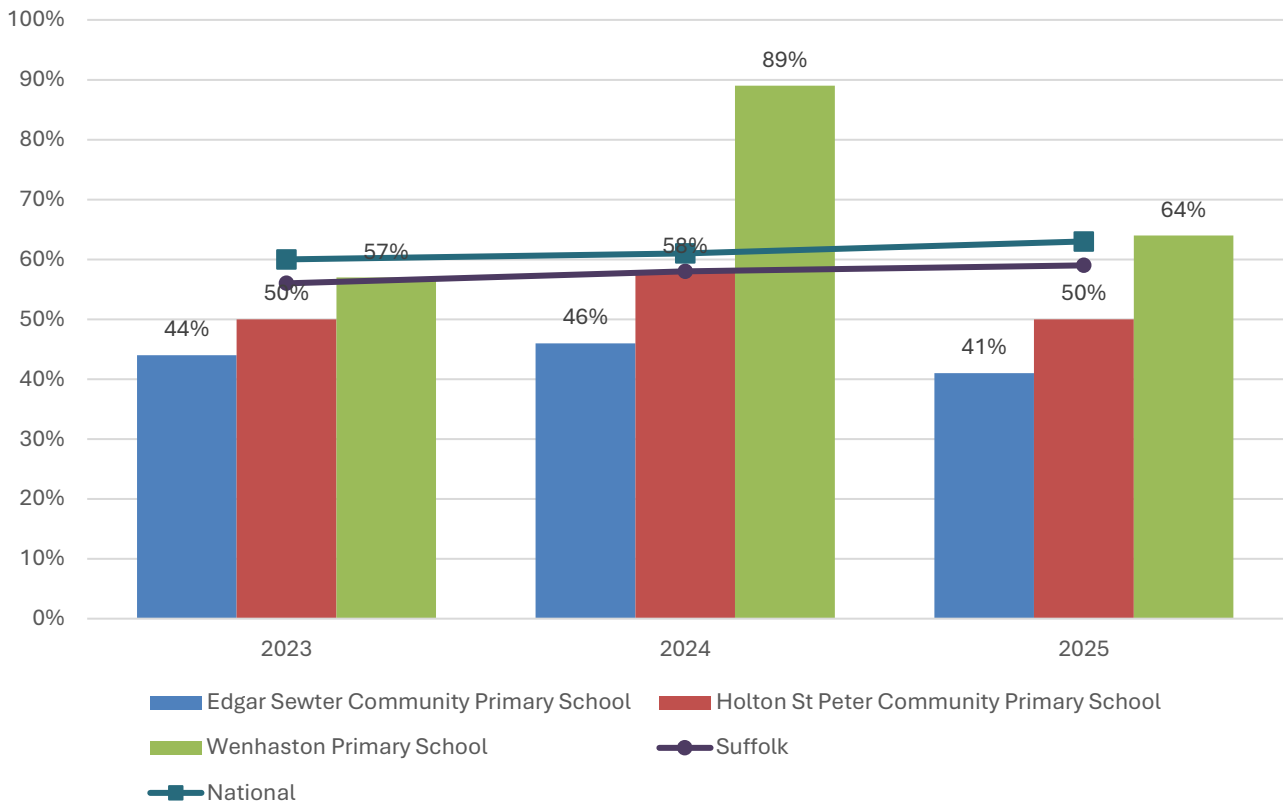
% pupils achieving Good Level of Development (GLD)



- The percentage of pupils who achieved a Good Level of Development at Foundation Stage at Holton St Peter Community Primary School has been above the Suffolk and national average in each of the last three years.
- Foundation Stage attainment was also 12 percentage points above the national benchmark at Wenhaston Primary School in both 2024 and 2025, but below average in 2023.
- At Edgar Sewter Community Primary School, attainment has declined year on year during this period, and fell 23 percentage points below the national average in 2025.

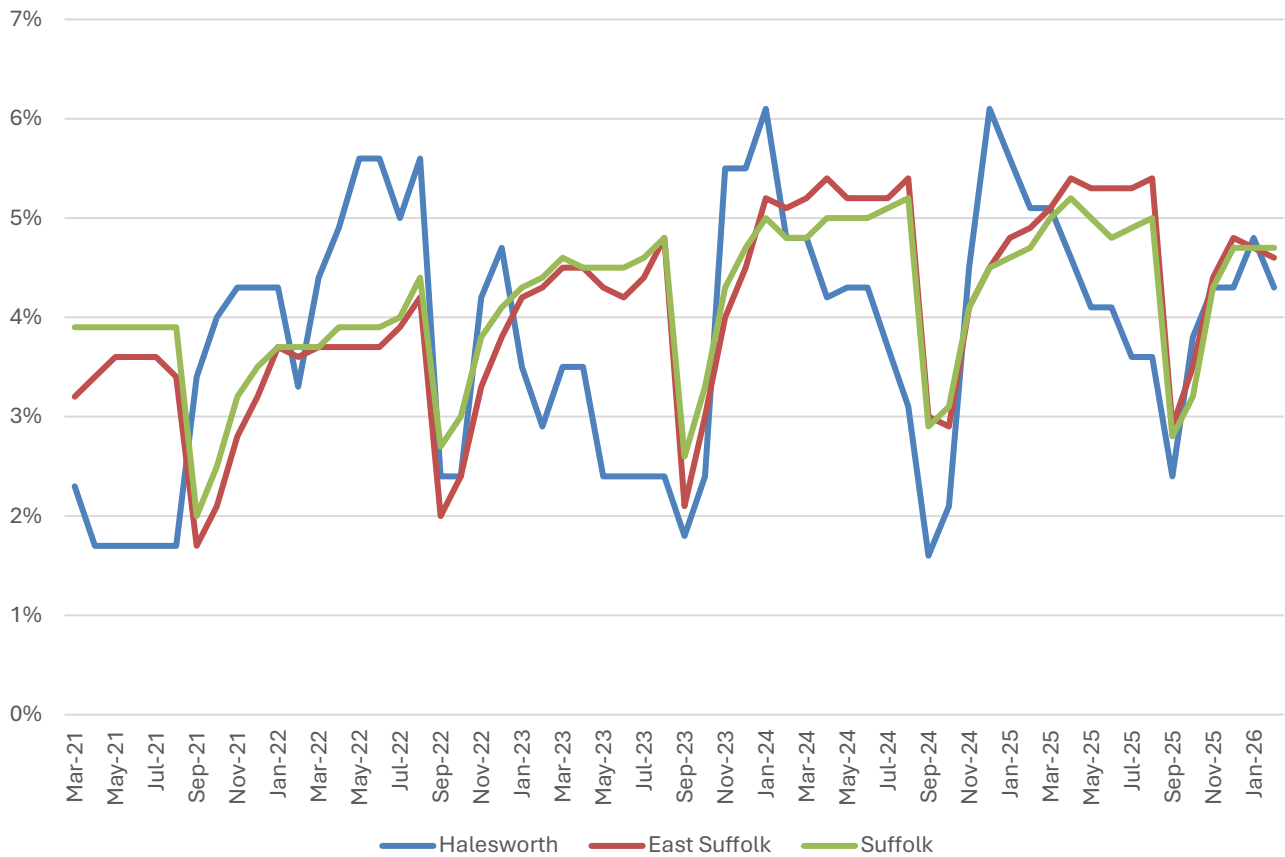
## Key Stage 2 (age 11)

% pupils achieving the Expected Level or better in Reading, Writing and Mathematics



- The percentage of pupils that achieved the expected level or better in reading, writing and mathematics at Key Stage 2 at Edgar Sewter Community Primary School and Holton St Peter Community Primary School was below the overall proportion nationally in each of the last three years.
- KS2 attainment levels at Wenhaston Primary School were particularly strong in 2024 and a single percentage point above the national figure in 2025.

## NEET % (Not in Education, Employment or Training)



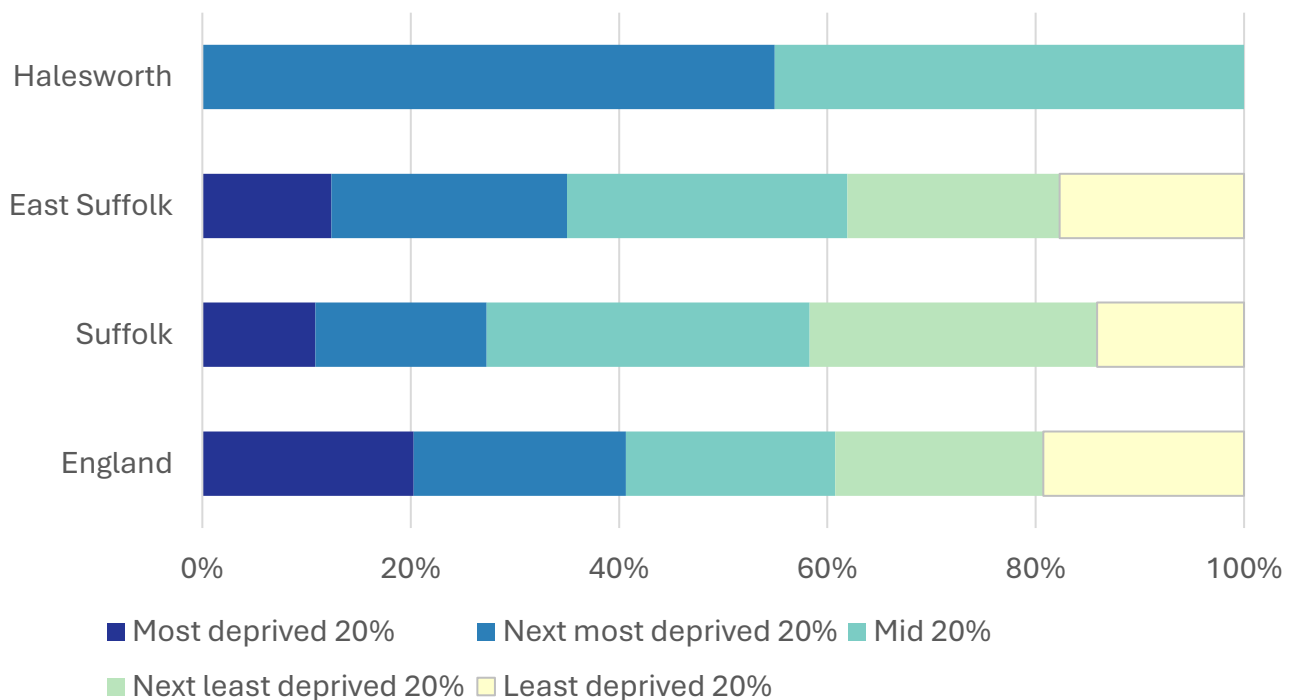
- In February 2026, 4.3% of 16–17-year-olds in Halesworth were classified as NEET (not in education, employment or training).
- NEET levels fluctuate considerably according to the time of year and due to small numbers of 16-17-year-olds in the division, typically being at their lowest at the beginning of a new school year.
- In Halesworth, NEET levels generally track the district and county average.

## Index of Multiple Deprivation (IMD) 2025 (see map overleaf)

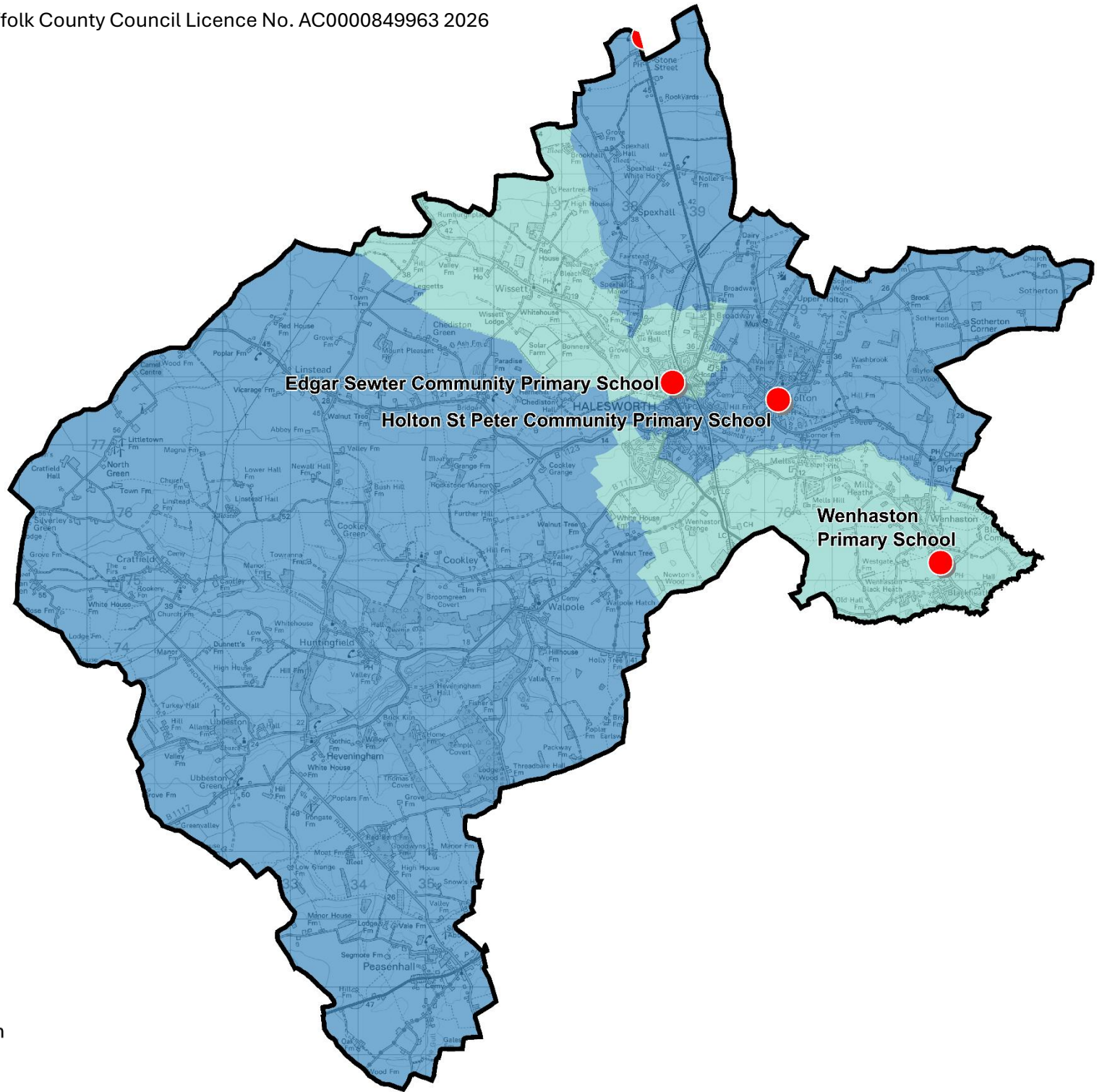
The IMD combines a number of indicators, chosen to cover a range of economic, social and housing issues, into a single deprivation score for each small area in England. This allows each area to be ranked relative to one another according to their level of deprivation. Small areas (Lower Super Output Areas, average population 1,700) are most commonly described as being in 1 of 5 quintile bands. The bottom quintile represents the 20% of areas that are the most deprived in England; these are shaded pale yellow on the map. The top quintile represents the least deprived areas in England and is shaded dark blue.

The Index is widely used to analyse patterns of deprivation, identify areas that would benefit from special initiatives or programmes and as a tool to determine eligibility for specific funding streams.

The chart below shows the percentage of the population of the division that live in areas ranked among each of the five quintiles of deprivation, alongside the district, county and England comparators.



- The 2025 IMD shows that overall relative deprivation levels in Halesworth are quite uniformly moderate to high.
- All parts of the division are ranked in the second most deprived quintile of deprivation (home to 55% of the local population) or the middle quintile (the remaining 45% of the population).
- No part of the division is ranked in the most or least deprived 20% of areas in England.
- See the map overleaf for the distribution of IMD 2025 results across the division.



**IMD 2025 quintile**

- Least deprived 20%
- Next least deprived 20%
- Mid 20%
- Next most deprived 20%
- Most deprived 20%

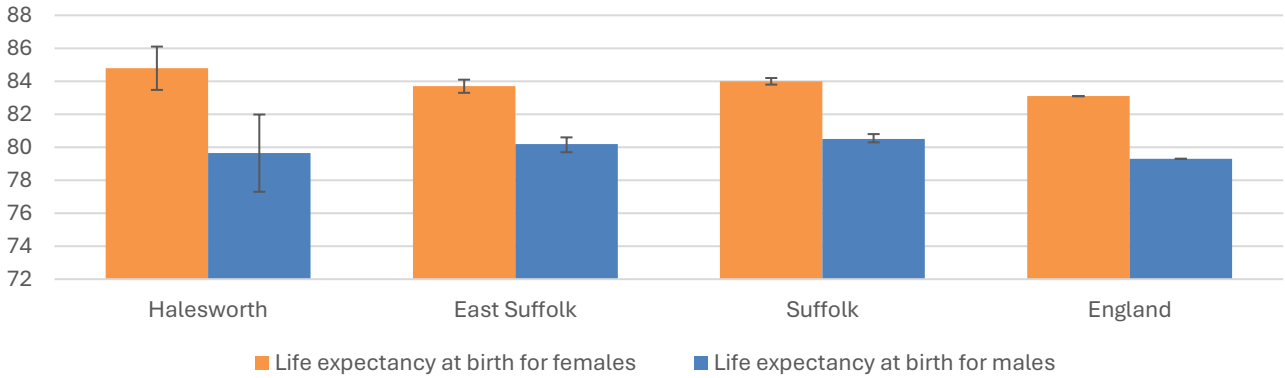
**School Phase**

- Primary
- Secondary
- Special
- Pupil referral unit/Alternative provision
- Nursery

# Health

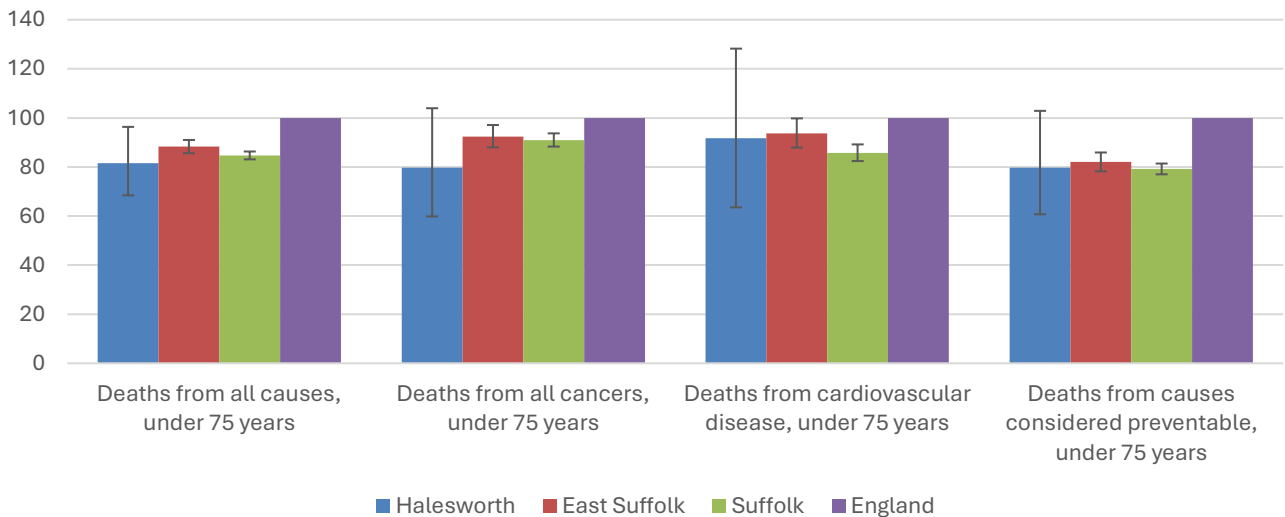
The local data used here is based on relatively small numbers. The confidence limits provide an indication of the reliability of the data. The 95% confidence intervals utilised on the chart provide a range within which there is 95% chance of the true result lying.

## Life expectancy at birth



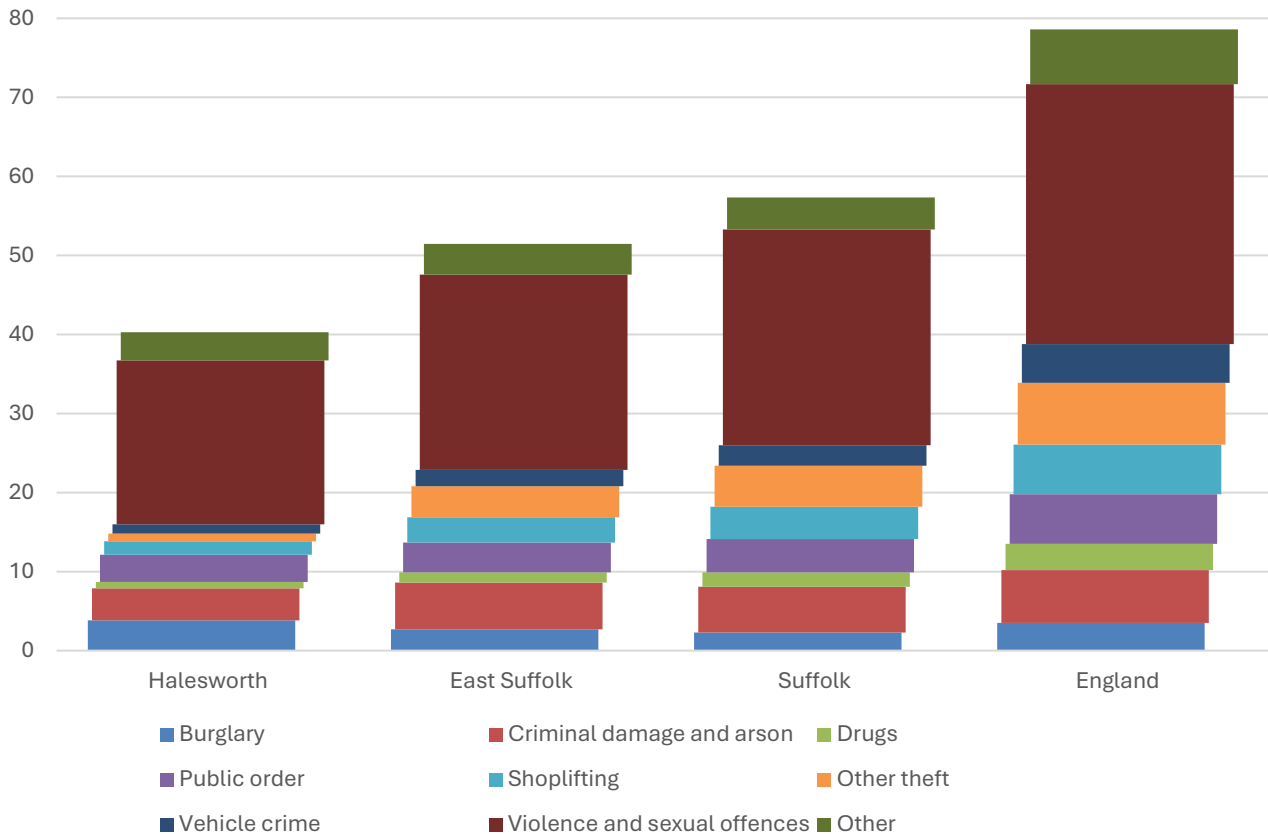
- Estimated life expectancy at birth for females in Halesworth is statistically significantly higher than the England average, and similar to the district and county figures.
- For males, estimated life expectancy in Halesworth is statistically similar to the district, county and national averages.
- The latest life expectancy at birth estimates for the division are 84.8 for females (above the England average of 83.1), and 79.6 for males (compared to 79.3 nationally).

## Deaths, under 75 years, standardised mortality ratio



- Estimated standardised mortality ratios for early deaths from all causes, cancers, circulatory disease and causes considered preventable in Halesworth are below 100, indicating that deaths in under 75s due to these causes are lower than in England.
- Confidence intervals around these estimates are wide for local data, but the SMR for deaths from all causes is statistically significantly lower than England.
- The standardised mortality ratio data shown here means that for every 100 early deaths from all causes across England as a whole, there are an estimated 81 comparable deaths in Halesworth.

## Crime & Community Safety



- Crime levels in Halesworth are low compared to both the district and county averages, with 40 recorded crimes per 1,000 residents in the division in the 12 months to the end of January 2026, compared to 51 in East Suffolk and 57 countywide.
- All types of crime occur at a lower rate in the division than the district and county average with the exception of burglaries. In Halesworth, there were 3.8 burglaries during this period for every 1,000 residents, compared to 2.7 across East Suffolk, 2.3 in Suffolk and 3.5 nationally.
- By far the most common type of crime recorded during this period was violence and sexual offences, which accounted for just over half of all recorded crimes in the division.

## Additional Information

### Parishes in Division

Blyford  
 Chediston  
 Cookley  
 Cratfield  
 Halesworth  
 Heveningham  
 Holton  
 Huntingfield  
 Linstead Magna

Linstead Parva  
 Peasenhall  
 Sotherton  
 Spexhall  
 Ubbeston  
 Walpole  
 Wenhaston with Mells Hamlet  
 Wissett

## Data sources

Category	Indicator	Source
Demographic Profile	Quinary population table 2024	ONS 2024 mid-year population estimates
	Population pyramid 2024	ONS 2024 mid-year population estimates
	Ethnicity 2021	ONS 2021 Census
Economy	Employment by broad industrial sector 2024	ONS Business Register and Employment Survey via NOMIS
Labour market	Claimant count: The number of people claiming Jobseeker's Allowance plus those who claim Universal Credit who are out of work (% 16-64 population) January 2021-February 2026	DWP via NOMIS
Education	School information and attainment 2023-2025	Suffolk County Council CYP iHub
	% 16-17-year-olds NEET (Not in Employment, Education or Training) March 2021 to February 2026	Suffolk County Council CYP iHub via the Suffolk Observatory
Deprivation	Index of Multiple Deprivation 2025	Ministry of Housing, Communities and Local Government
Health	Life expectancy at birth 2016-2020 (2018-2020 for comparator areas)	Office for Health Improvement and Disparities
Health	Standardised mortality ratio for deaths from all causes, cancer, cardiovascular disease, and from causes considered preventable (under 75 years), 2016-2020 (2019-2023 for comparator areas). The standardised mortality ratio is the ratio of observed deaths in the study group to expected deaths in the general population	Office for Health Improvement and Disparities
Community Safety	Recorded crime rate per 1,000 resident population February 2025 to January 2026	Data.police.uk via the Suffolk Observatory

For more data and information about Halesworth Electoral Division, see the Suffolk Observatory [www.suffolkobservatory.info](http://www.suffolkobservatory.info)

