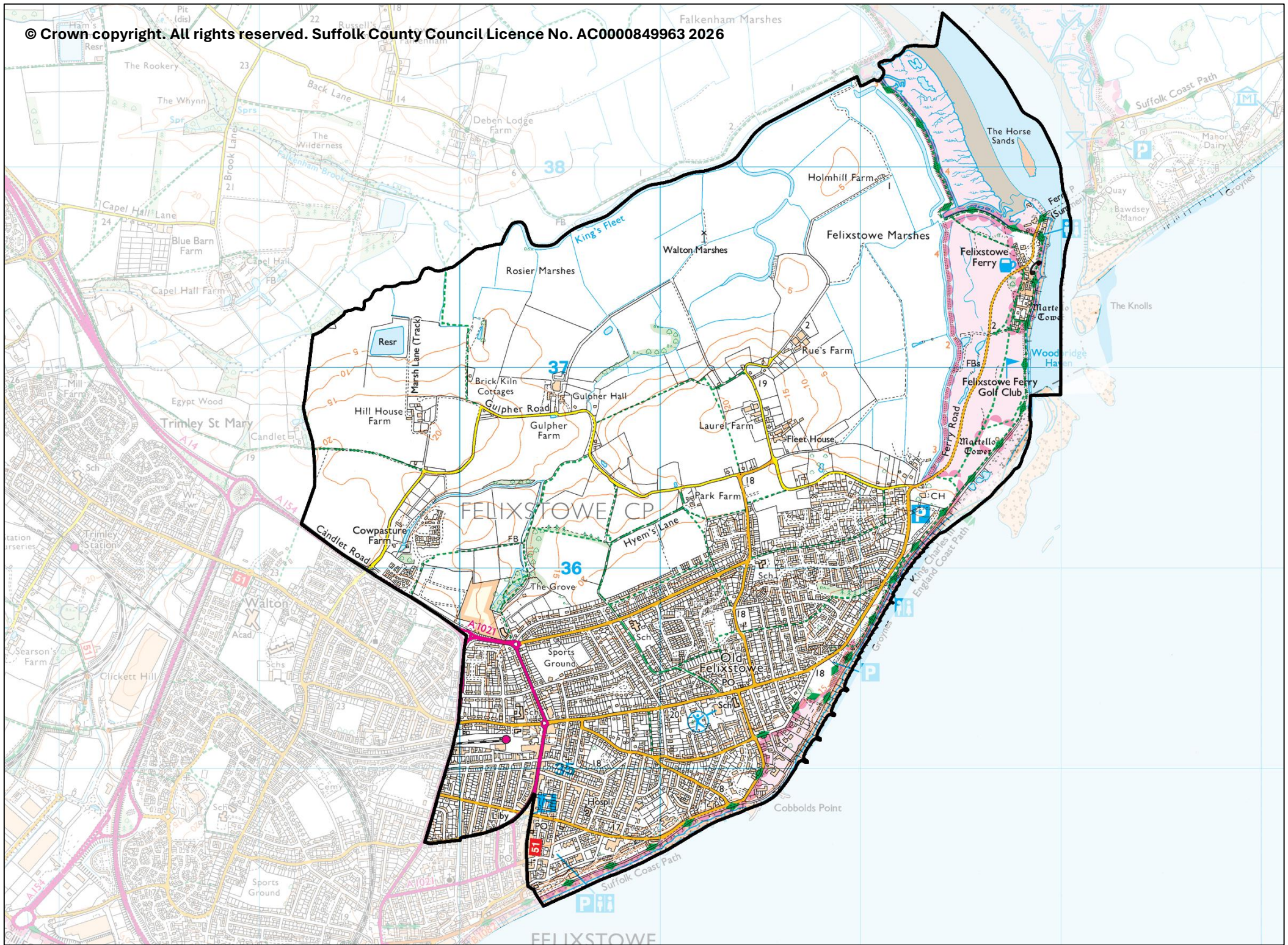


Felixstowe Clifflands

County Electoral Division profile
May 2026

This division comprises part of Eastern Felixstowe Ward





Contents

- Demographic Profile: Age & Ethnicity
- Economy and Labour Market
- Schools & NEET
- Index of Multiple Deprivation
- Health
- Crime & Community Safety
- Additional Information
- Data Sources

Electoral Division Profiles: an introduction

These profiles have been produced to support elected members, constituents and other interested parties in understanding the demographic, economic, social and educational profile of their neighbourhoods. We have used the latest data available at the time of publication.

Much more data is available from national and local sources than is captured here, but it is hoped that the profile will be a useful starting point for discussion, where local knowledge and experience can be used to flesh out and illuminate the information presented here.

The profile can be used to help look at some fundamental questions e.g.

- Does the age profile of the population match or differ from the national profile?
- Is there evidence of the ageing profile of the county in all the wards in the Division or just some?
- How diverse is the community in terms of ethnicity?
- What is the impact of deprivation on families and residents?
- Does there seem to be a link between deprivation and school performance?
- What is the breakdown of employment sectors in the area?
- Is it a relatively healthy area compared to the rest of the district or county?
- What sort of crime is prevalent in the community?

A vast amount of additional data is available on the **Suffolk Observatory**

www.suffolkobservatory.info

The Suffolk Observatory is a free online resource that contains all Suffolk's vital statistics; it is the one-stop-shop for information and intelligence about Suffolk. Through data, reports and maps, the Suffolk Observatory provides a comprehensive picture of the County. It is a great source for useful facts and figures that can be used for writing reports and presentations, informing strategic and business planning, preparing funding applications or supporting academic research. Data is presented around the key themes of population, children and young people, health and social care, housing, crime and community safety, deprivation, economy and employment and environment. All areas of the county are covered, right down to district, electoral division, ward and parish level, with information easily accessible in a variety of formats. You can also build your own reports for custom areas.

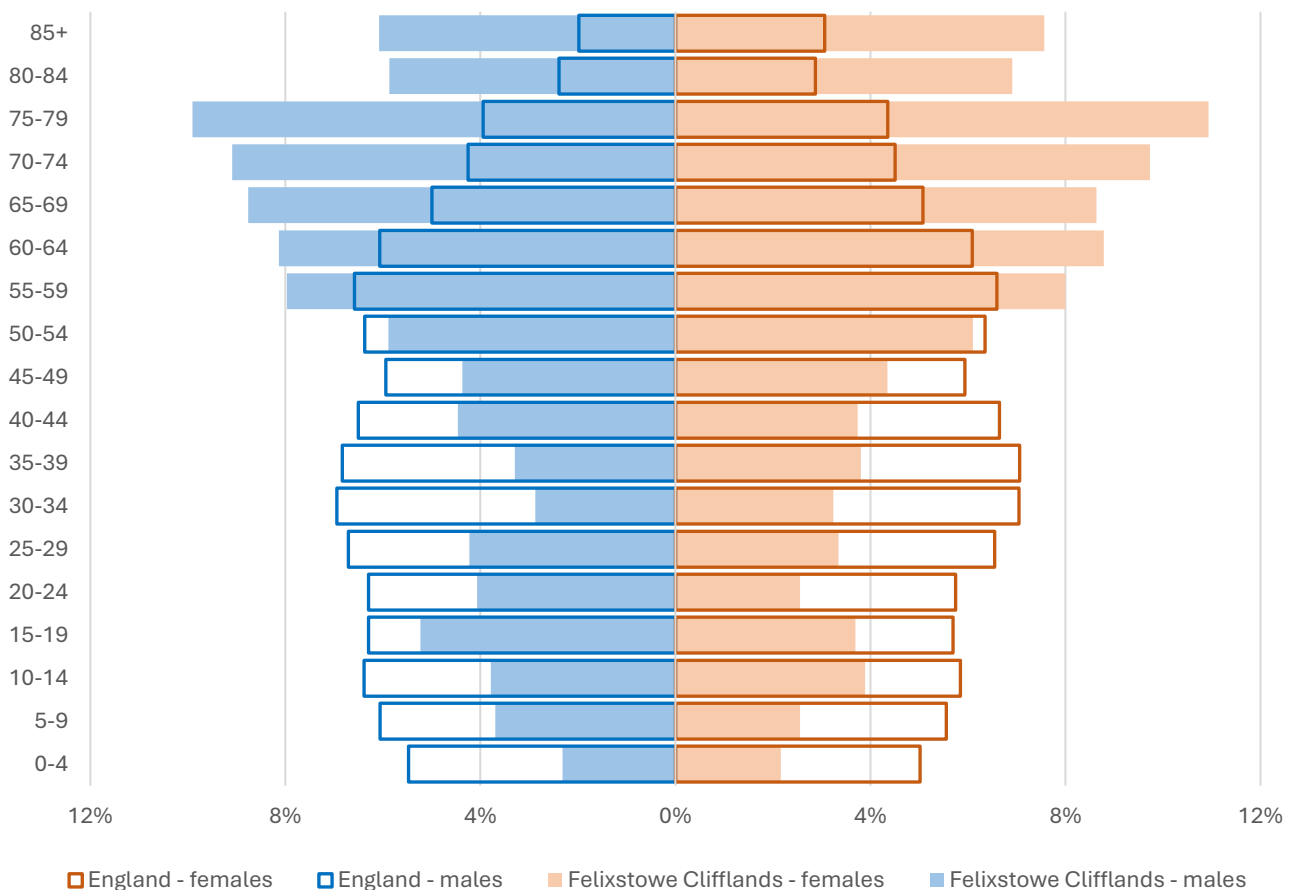
Technical Notes:

1. Where electoral divisions do not exactly match the boundaries at which the data is available (e.g. ward, Output Area or Lower Super Output Area), we have adopted a "best-fit" approach to produce a dataset.
2. District, county and national level data is provided where possible to provide a context for comparisons.

Demographic Profile - Age

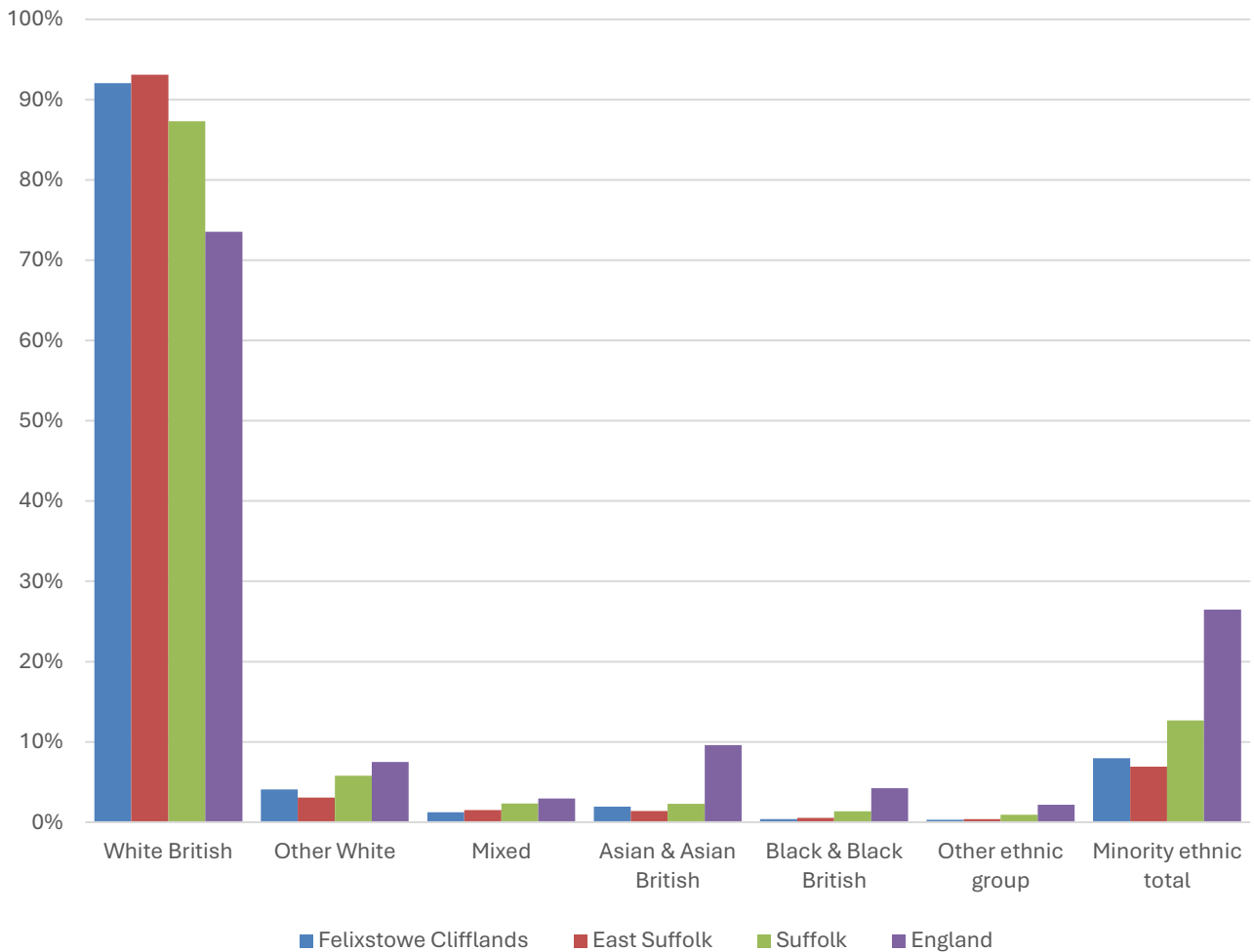
In mid-2024, the estimated population of Felixstowe Clifflands stood at 8,854, a decrease of 0.7% over the past decade. The age structure of the division is set out below.

| Felixstowe Clifflands Division | |
|--------------------------------|-------|
| All Ages | 8,854 |
| 0-4 | 198 |
| 5-9 | 275 |
| 10-14 | 340 |
| 15-19 | 393 |
| 20-24 | 291 |
| 25-29 | 334 |
| 30-34 | 271 |
| 35-39 | 315 |
| 40-44 | 362 |
| 45-49 | 386 |
| 50-54 | 531 |
| 55-59 | 707 |
| 60-64 | 750 |
| 65-69 | 770 |
| 70-74 | 834 |
| 75-79 | 924 |
| 80-84 | 567 |
| 85+ | 606 |



- The age pyramid for Felixstowe Clifflands division shows a considerably larger proportion of residents aged 55 and over than in England as a whole.
- The most common age group in the division is 75-79-year-olds (10.4% of the local population), followed by 70-74-year-olds (9.4%), and 65-69-year-olds (8.7%).
- Just over 40% of the population of Felixstowe Clifflands is of retirement age.
- All age groups under the age of 55 are underrepresented in the division.

Demographic Profile - Ethnicity

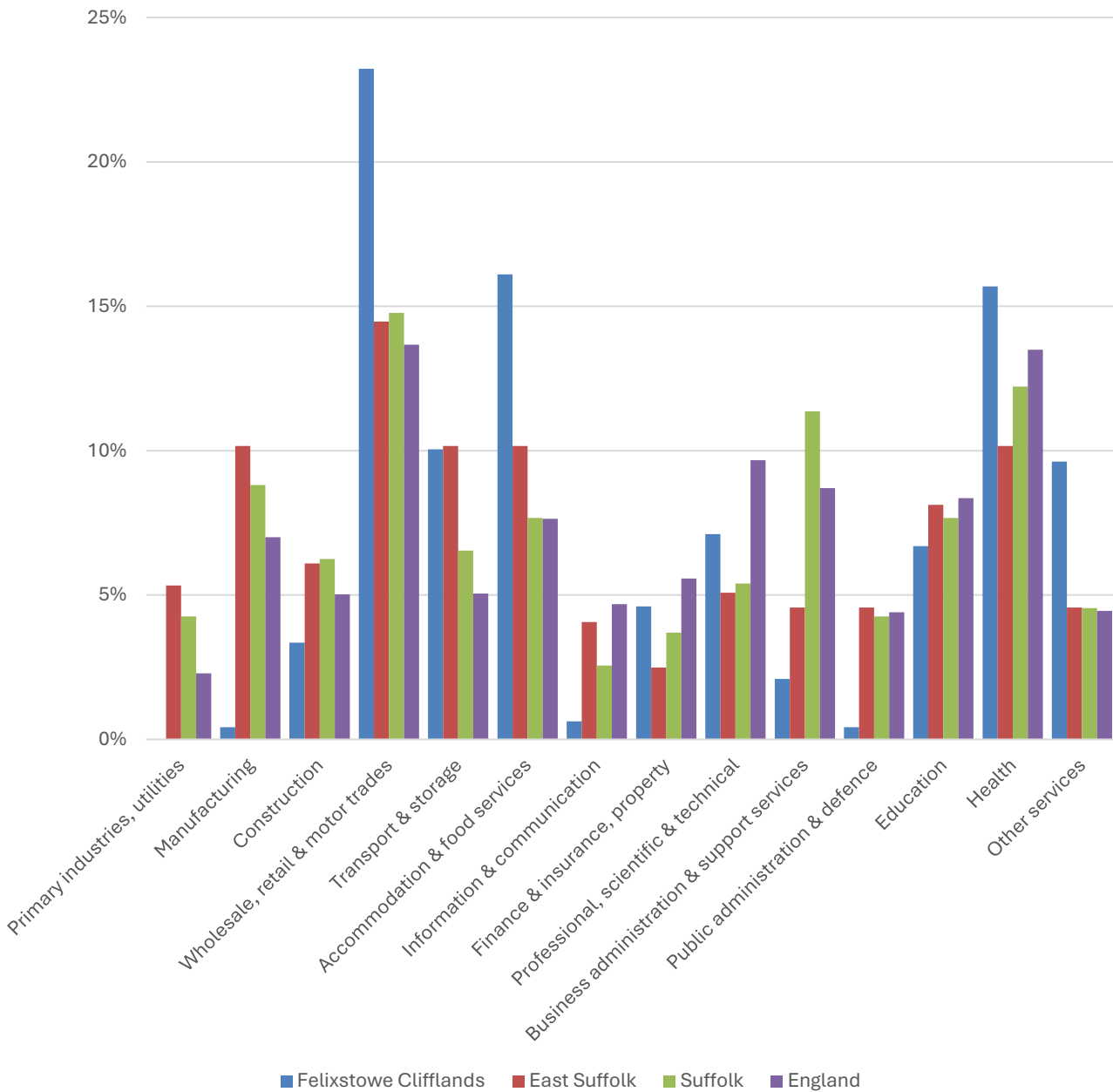


- According to the latest data (2021 Census), 92% of the population of Felixstowe Clifflands are White British.
- There were 700 (4.5%) people of minority ethnic origin in the division, less than the level in Suffolk as a whole and around a third of the England average.
- Felixstowe Clifflands has a slightly more ethnically diverse population profile than East Suffolk district, driven by larger proportions of Other White and Asian/Asian British residents.

| | All people | | White British | | Other White | | Mixed | | Asian and Asian British | | Black and Black British | | Other Ethnic Group | | Total minority ethnic population | |
|-----------------------|------------|---|---------------|------|-------------|-----|--------|-----|-------------------------|-----|-------------------------|-----|--------------------|-----|----------------------------------|------|
| | Count | % | Count | % | Count | % | Count | % | Count | % | Count | % | Count | % | Count | % |
| Felixstowe Clifflands | 8,800 | | 8,100 | 92.0 | 359 | 4.1 | 109 | 1.2 | 172 | 2.0 | 34 | 0.4 | 26 | 0.3 | 700 | 8.0 |
| East Suffolk | 246,060 | | 229,063 | 93.1 | 7,564 | 3.1 | 3,707 | 1.5 | 3,447 | 1.4 | 1,357 | 0.6 | 922 | 0.4 | 16,997 | 6.9 |
| Suffolk | 760,687 | | 664,205 | 87.3 | 44,066 | 5.8 | 17,807 | 2.3 | 17,483 | 2.3 | 10,168 | 1.3 | 6,958 | 0.9 | 96,482 | 12.7 |
| England | | | | 73.5 | | 7.5 | | 3.0 | | 9.6 | | 4.2 | | 2.2 | | 26.5 |

Economy

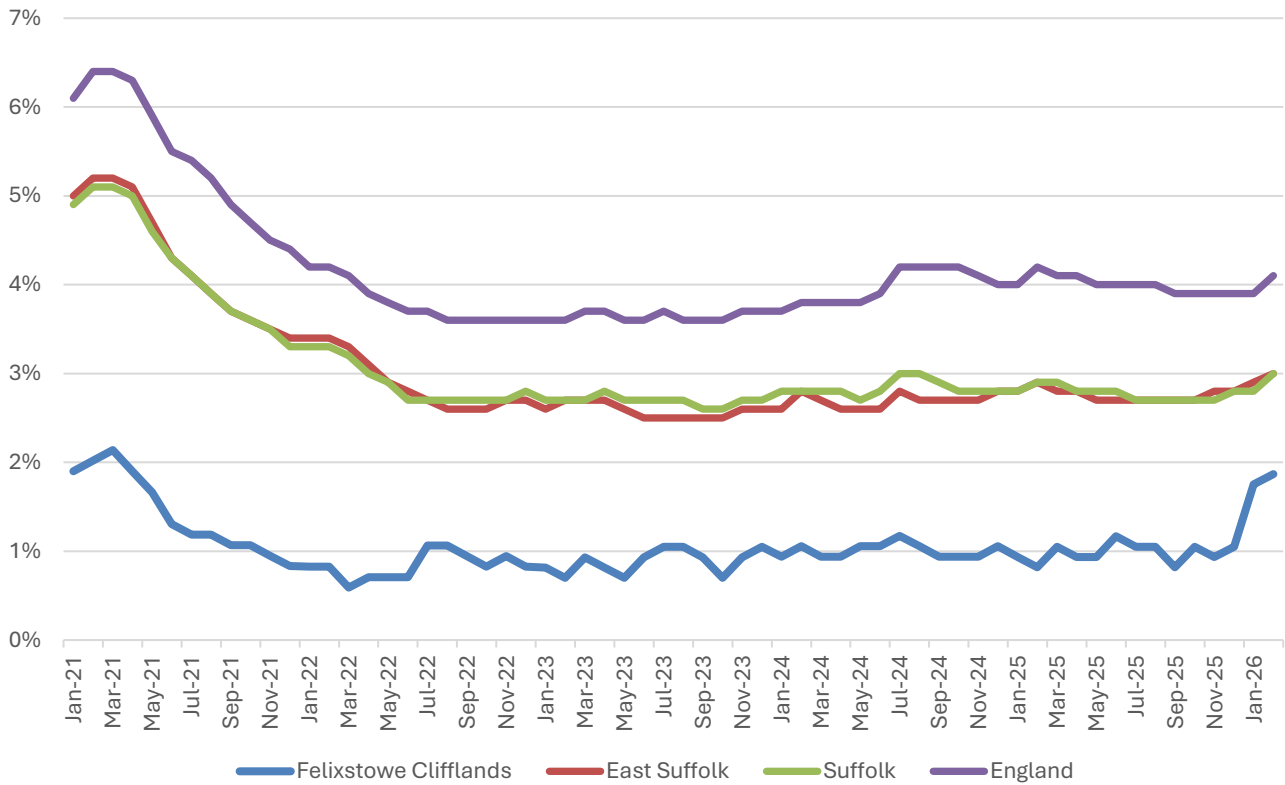
There are around 2,400 people employed in Felixstowe Clifflands.



- Wholesale, retail and motor trades (23% of local employment), accommodation and food services (16%), and health services (16%) are the three largest sectors in Felixstowe Clifflands.
- Transport and storage and other services also each make up about a tenth of jobs in the division. The other services sector primarily includes creative and cultural industries, and gambling, betting and sports activities.

Labour Market

Out-of-work benefit claimant rate



- In common with East Suffolk, Suffolk and England as a whole, Felixstowe Clifflands saw a decline in the proportion of the working age population claiming of out-of-work benefits during 2021 following a peak during the COVID-19 pandemic.
- Since then, the claimant rate in the division has been largely stable at around 1%, though there has been a rise in the rate in the last two months of data at the time of writing, with the figure in February 2026 sitting at 1.9%.
- The claimant rate in Felixstowe Clifflands is generally about 1.7 percentage points below the district and county figures, and 3 percentage points below the national average.

Schools

School Information

Schools in the Division

| Name | Phase | Academy Status | No. pupils | Average cohort size at: | | | |
|---------------------------|---------|----------------|------------|----------------------------|----------------|-----------------|-----------------|
| | | | | Foundation Stage (age 4-7) | KS2 (age 7-11) | KS4 (age 14-16) | KS5 (age 16-18) |
| Colneis Junior School | Primary | AC | 343 | | 88 | | |
| Fairfield Infant School | Primary | AC | 294 | 83 | | | |
| Kingsfleet Primary School | Primary | LA | 185 | 28 | 29 | | |

Academy Status key: AS = Academy Sponsored, AC = Academy Converter, LA = LA Maintained, F = Free

Ofsted information

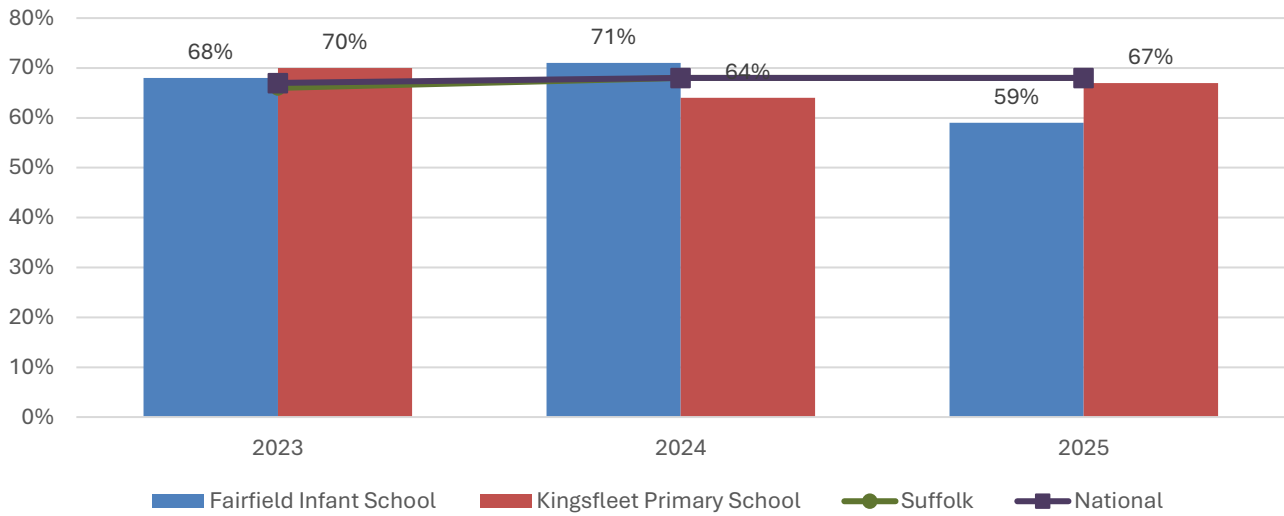
| Name | Overall effectiveness | Effectiveness of leadership and | Behaviour and attitudes | Personal development | Early years provision (if applicable) | Quality of education | Last inspection date |
|---------------------------|-----------------------|---------------------------------|-------------------------|----------------------|---------------------------------------|----------------------|----------------------|
| Colneis Junior School | 2 | 2 | 9 | 9 | 9 | 9 | 22/03/2017 |
| Fairfield Infant School | 2 | 2 | 9 | 9 | 1 | 9 | 12/07/2017 |
| Kingsfleet Primary School | 2 | 2 | 9 | 9 | 2 | 9 | 07/03/2019 |

| Code | Judgement | Code | Judgement |
|------|-----------------------|------------|-------------------|
| 0 | Insufficient evidence | SM | Special measures |
| 1 | Outstanding | 8 | Does not apply |
| 2 | Good | 9 | No judgement |
| 3 | Requires improvement | Null | No data available |
| 4 | Inadequate | Not judged | Not judged |
| SWK | Serious weaknesses | 5 | No overall grade |

School Attainment

Foundation Stage Profile (reception)

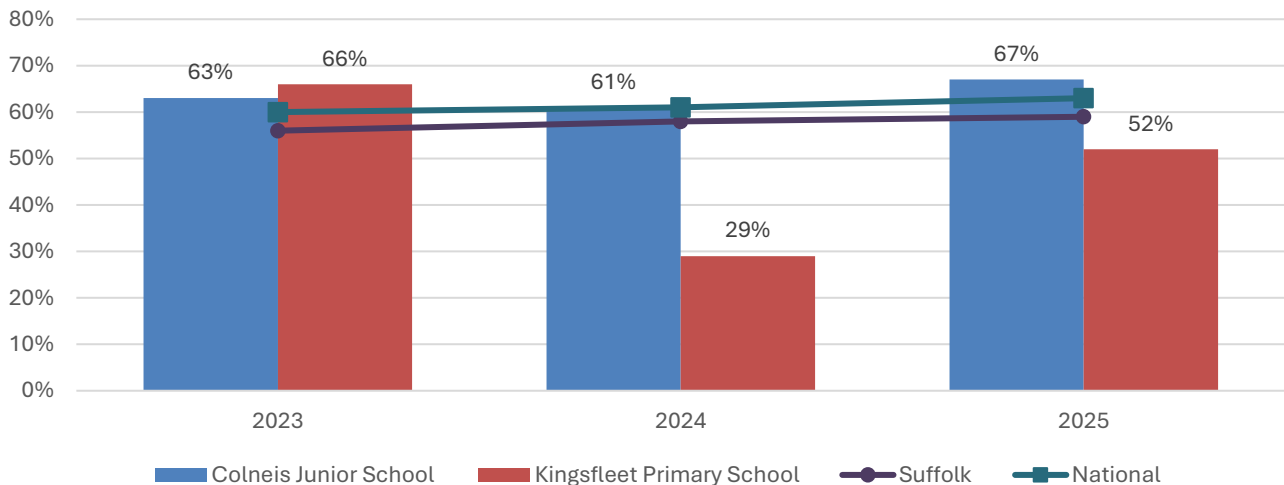
% pupils achieving Good Level of Development (GLD)



- Foundation Stage attainment at both Fairfield Infant School and Kingsfleet Primary School was below the national benchmark in 2025, by nine and one percentage points respectively.
- In the two previous years, the percentage of pupils at Fairfield Infant School who achieved a Good Level of Development (GLD) at Foundation Stage (FS) was slightly above the national figure.
- At Kingsfleet Primary, FS attainment was also above the national level in 2023, but dipped four percentage points below it in 2024.

Key Stage 2 (age 11)

% pupils achieving the Expected Level or better in Reading, Writing and Mathematics



- Key stage 2 attainment at Colneis Junior School has been equal to or above the national benchmark throughout the last three years.
- The percentage of pupils at Kingsfleet Primary who achieved the expected level or better in reading, writing and mathematics was also very good in 2023, before dipping below the national average in the following two years.

NEET % (Not in Education, Employment or Training)



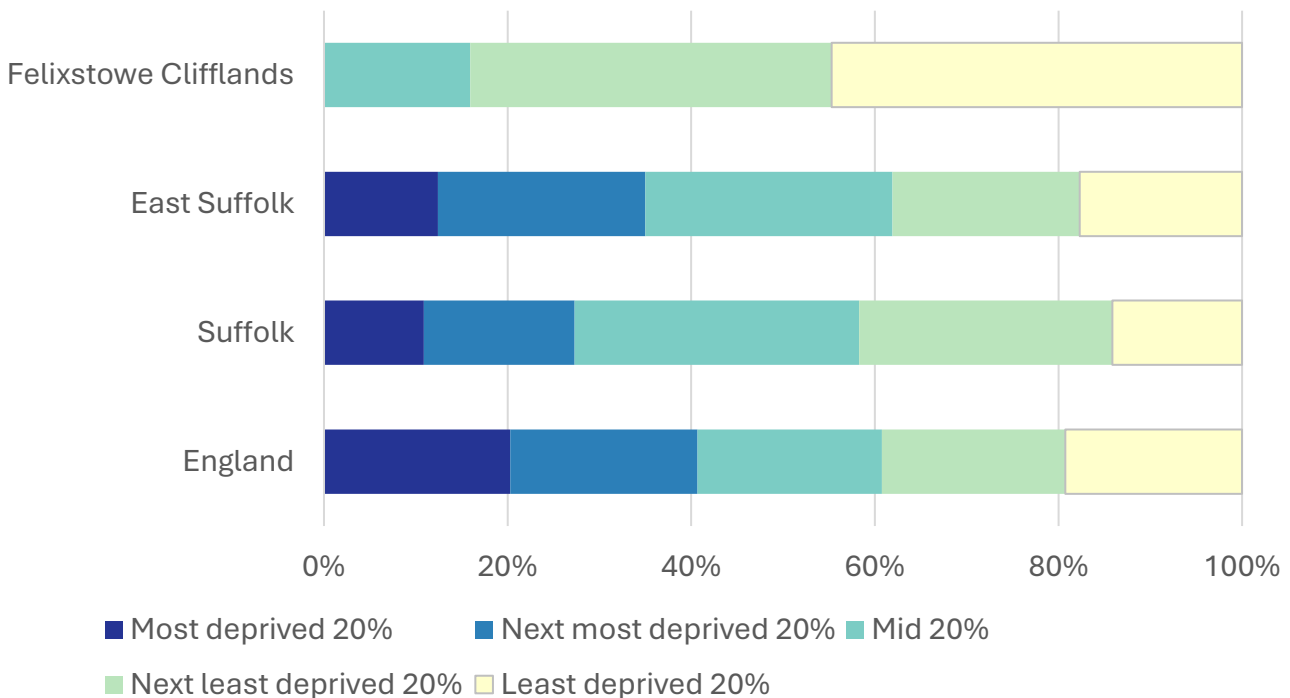
- In February 2026, 3.9% of 16–17-year-olds in Felixstowe Clifflands were classified as NEET (not in education, employment or training).
- NEET levels fluctuate considerably according to the time of year and due to small numbers of 16-17-year-olds in the division, typically being at their lowest at the beginning of a new school year.
- In Felixstowe Clifflands, NEET levels have been almost invariably below the district and county figures since autumn 2021.

Index of Multiple Deprivation (IMD) 2025 (see map overleaf)

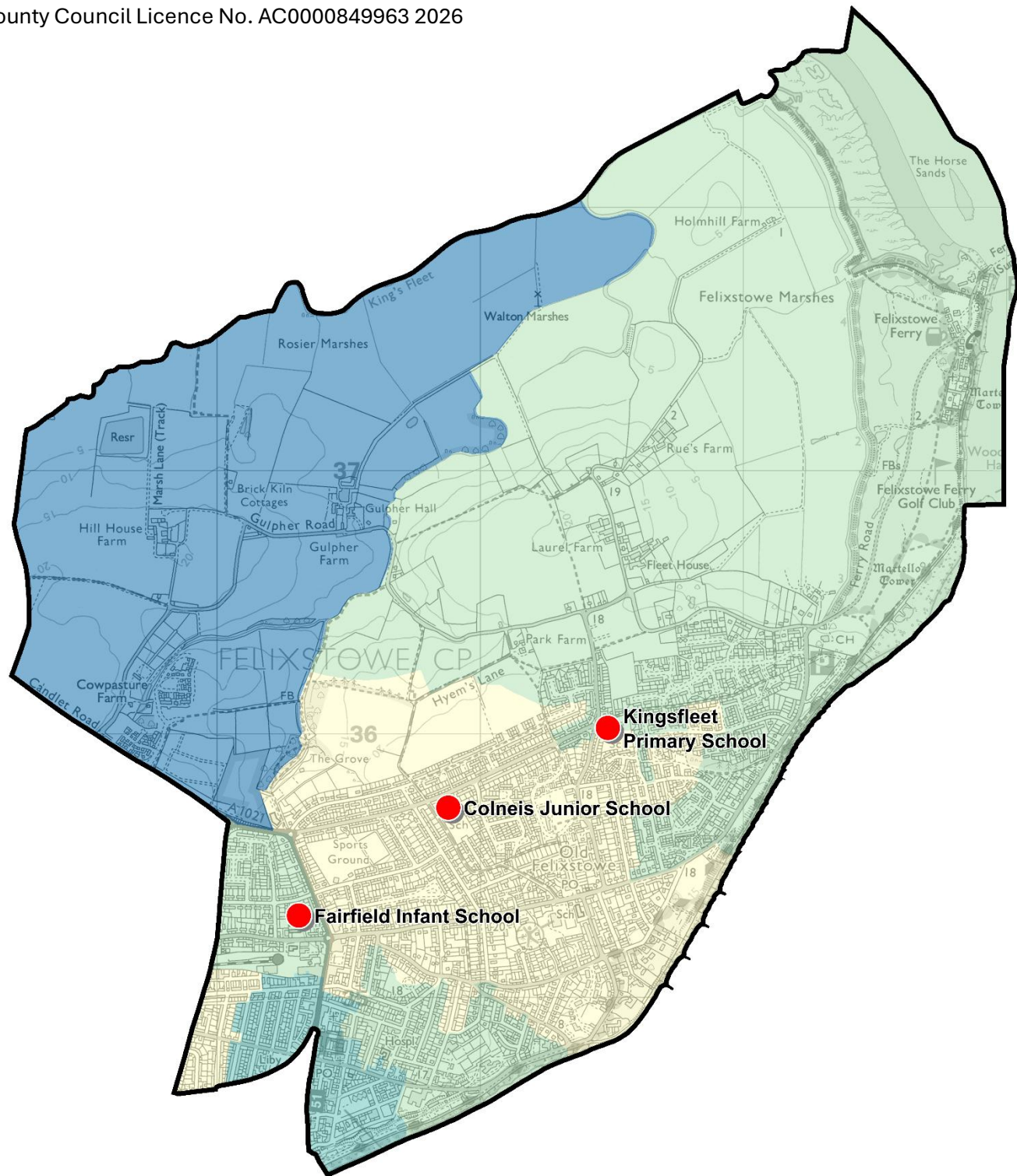
The IMD combines a number of indicators, chosen to cover a range of economic, social and housing issues, into a single deprivation score for each small area in England. This allows each area to be ranked relative to one another according to their level of deprivation. Small areas (Lower Super Output Areas, average population 1,700) are most commonly described as being in 1 of 5 quintile bands. The bottom quintile represents the 20% of areas that are the most deprived in England; these are shaded pale yellow on the map. The top quintile represents the least deprived areas in England and is shaded dark blue.

The Index is widely used to analyse patterns of deprivation, identify areas that would benefit from special initiatives or programmes and as a tool to determine eligibility for specific funding streams.

The chart below shows the percentage of the population of the division that live in areas ranked among each of the five quintiles of deprivation, alongside the district, county and England comparators.



- The 2025 IMD shows that deprivation levels across most of Felixstowe Clifflands are low.
- 45% of the population of the division live in areas that are ranked among the least deprived in England, with a further 39% of the population in areas in the next least deprived quintile.
- The remaining part of the division is in the middle quintile of deprivation (the area furthest south along the seafront).
- The rural part of western Felixstowe Clifflands is ranked in the second most deprived quintile (the darkest part of the map overleaf). However, the vast majority of the population of this LSOA lives in Walton and Trimleys division. As the boundaries of LSOAs and Electoral Divisions are not coterminous, this area has been assigned to Walton and Trimleys.
- See the map overleaf for the distribution of IMD 2025 results across the division.



IMD 2025 quintile

- Least deprived 20%
- Next least deprived 20%
- Mid 20%
- Next most deprived 20%
- Most deprived 20%

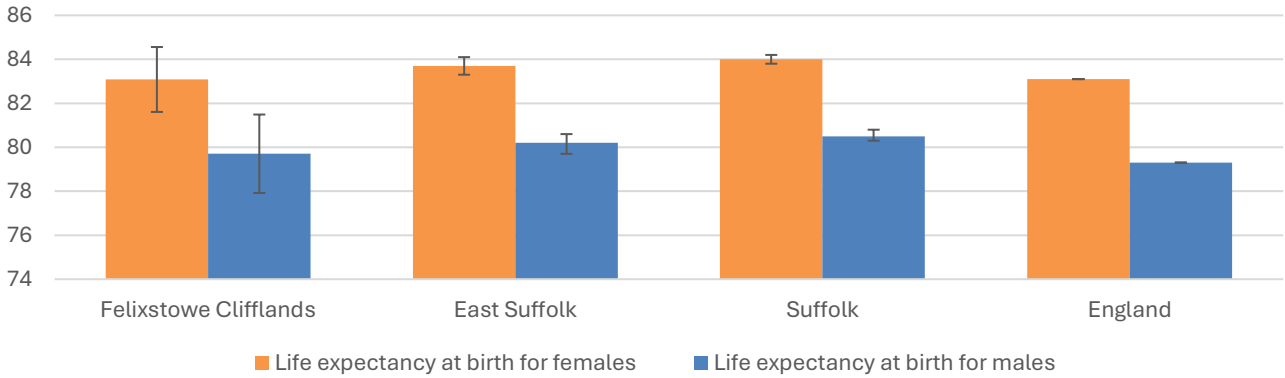
School Phase

- Primary
- Secondary
- Special
- Pupil referral unit/Alternative provision
- Nursery

Health

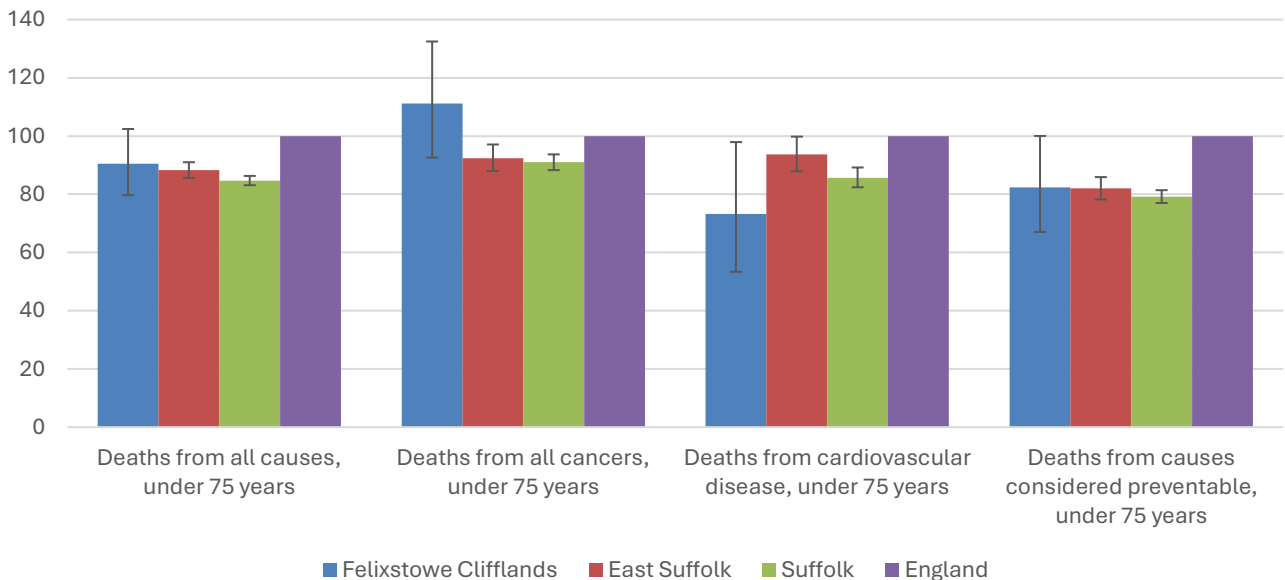
The local data used here is based on relatively small numbers. The confidence limits provide an indication of the reliability of the data. The 95% confidence intervals utilised on the chart provide a range within which there is 95% chance of the true result lying.

Life expectancy at birth



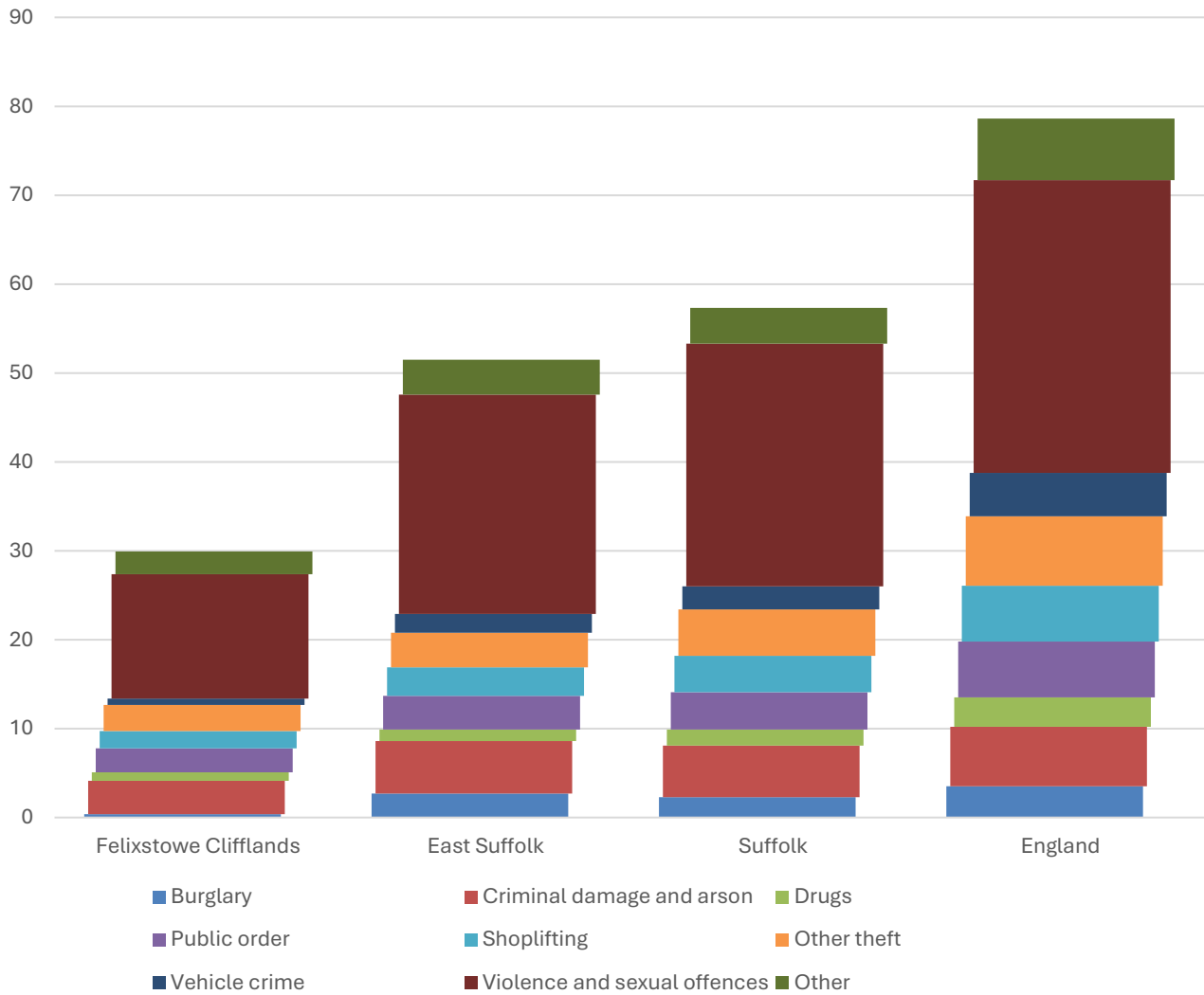
- Estimated life expectancy at birth for both females and males in Felixstowe Clifflands are statistically similar to the East Suffolk, Suffolk and England averages.
- The latest life expectancy at birth estimates for the division are 83.1 for females (matching the England average), and 79.7 for males (compared to 79.3 nationally).

Deaths, under 75 years, standardised mortality ratio



- Estimated standardised mortality ratios for early deaths from all causes, cardiovascular disease and causes considered preventable in Felixstowe Clifflands are below 100, indicating that deaths in under 75s due to these causes are lower than in England.
- Confidence intervals around these estimates are wide for local data, but the SMR for deaths from cardiovascular disease is statistically significantly lower than England.
- The standardised mortality ratio data shown here means that for every 100 early deaths from all causes across England as a whole, there are an estimated 91 comparable deaths in Felixstowe Clifflands.

Crime & Community Safety



- Crime levels in Felixstowe Clifflands are low compared to both the district and county averages, with 30 crimes per 1,000 residents in the division in the 12 months to the end of January 2026, compared to 51 in East Suffolk and 57 countywide.
- All types of crime occur at a lower rate in the division than the district and county average.
- By far the most common type of crime recorded during this period was violence and sexual offences, which accounted for more than half of all recorded crimes in the division.

Additional Information

Parishes in Division

Felixstowe (part)

Data sources

| Category | Indicator | Source |
|---------------------|--|---|
| Demographic Profile | Quinary population table 2024 | ONS 2024 mid-year population estimates |
| | Population pyramid 2024 | ONS 2024 mid-year population estimates |
| | Ethnicity 2021 | ONS 2021 Census |
| Economy | Employment by broad industrial sector 2024 | ONS Business Register and Employment Survey via NOMIS |
| Labour market | Claimant count: The number of people claiming Jobseeker's Allowance plus those who claim Universal Credit who are out of work (% 16-64 population) January 2021-February 2026 | DWP via NOMIS |
| Education | School information and attainment 2023-2025 | Suffolk County Council CYP iHub |
| | % 16-17-year-olds NEET (Not in Employment, Education or Training) March 2021 to February 2026 | Suffolk County Council CYP iHub via the Suffolk Observatory |
| Deprivation | Index of Multiple Deprivation 2025 | Ministry of Housing, Communities and Local Government |
| Health | Life expectancy at birth 2016-2020 (2018-2020 for comparator areas) | Office for Health Improvement and Disparities |
| Health | Standardised mortality ratio for deaths from all causes, cancer, cardiovascular disease, and from causes considered preventable (under 75 years), 2016-2020 (2019-2023 for comparator areas). The standardised mortality ratio is the ratio of observed deaths in the study group to expected deaths in the general population | Office for Health Improvement and Disparities |
| Community Safety | Recorded crime rate per 1,000 resident population February 2025 to January 2026 | Data.police.uk via the Suffolk Observatory |

For more data and information about Felixstowe Clifflands Electoral Division, see the Suffolk Observatory www.suffolkobservatory.info

