

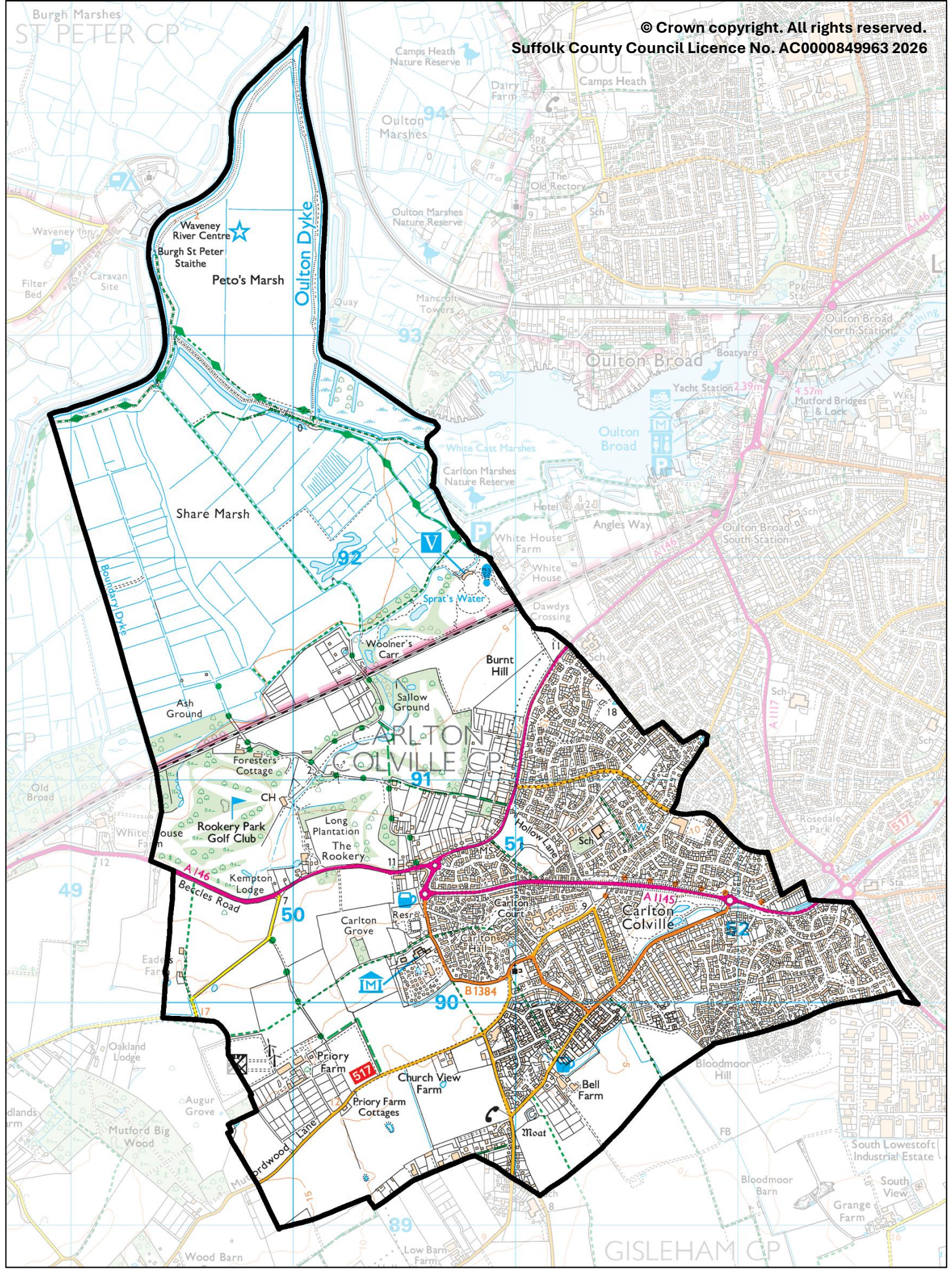
# Carlton Colville

County Electoral Division profile  
May 2026

This division comprises parts of Carlton Colville and Carlton & Whitton Wards



Burgh Marshes  
ST PETER CP



## **Contents**

- Demographic Profile: Age & Ethnicity
- Economy and Labour Market
- Schools & NEET
- Index of Multiple Deprivation
- Health
- Crime & Community Safety
- Additional Information
- Data Sources

# Electoral Division Profiles: an introduction

These profiles have been produced to support elected members, constituents and other interested parties in understanding the demographic, economic, social and educational profile of their neighbourhoods. We have used the latest data available at the time of publication.

Much more data is available from national and local sources than is captured here, but it is hoped that the profile will be a useful starting point for discussion, where local knowledge and experience can be used to flesh out and illuminate the information presented here.

The profile can be used to help look at some fundamental questions e.g.

- Does the age profile of the population match or differ from the national profile?
- Is there evidence of the ageing profile of the county in all the wards in the Division or just some?
- How diverse is the community in terms of ethnicity?
- What is the impact of deprivation on families and residents?
- Does there seem to be a link between deprivation and school performance?
- What is the breakdown of employment sectors in the area?
- Is it a relatively healthy area compared to the rest of the district or county?
- What sort of crime is prevalent in the community?

A vast amount of additional data is available on the **Suffolk Observatory**

[www.suffolkobservatory.info](http://www.suffolkobservatory.info)

The Suffolk Observatory is a free online resource that contains all Suffolk's vital statistics; it is the one-stop-shop for information and intelligence about Suffolk. Through data, reports and maps, the Suffolk Observatory provides a comprehensive picture of the County. It is a great source for useful facts and figures that can be used for writing reports and presentations, informing strategic and business planning, preparing funding applications or supporting academic research. Data is presented around the key themes of population, children and young people, health and social care, housing, crime and community safety, deprivation, economy and employment and environment. All areas of the county are covered, right down to district, electoral division, ward and parish level, with information easily accessible in a variety of formats. You can also build your own reports for custom areas.

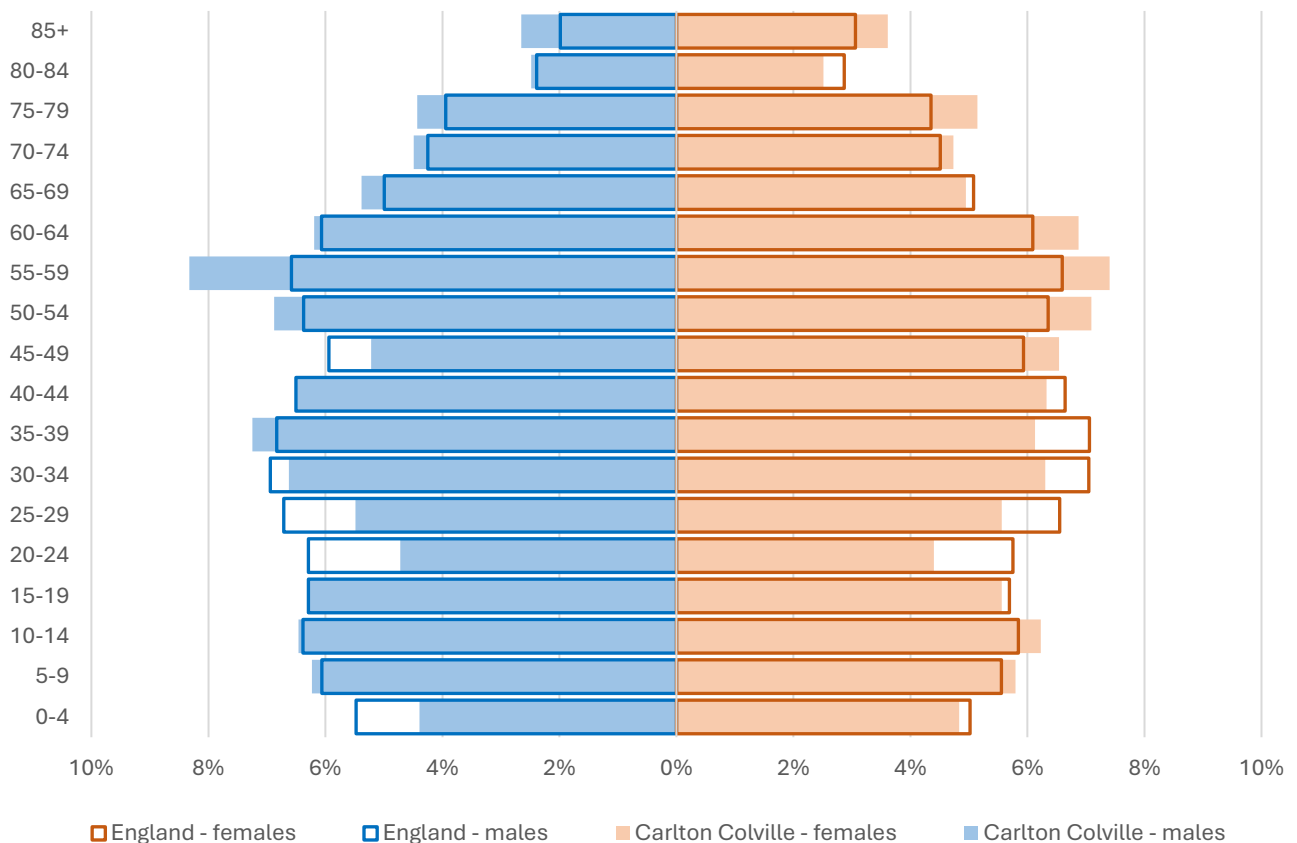
## Technical Notes:

1. Where electoral divisions do not exactly match the boundaries at which the data is available (e.g. ward, Output Area or Lower Super Output Area), we have adopted a "best-fit" approach to produce a dataset.
2. District, county and national level data is provided where possible to provide a context for comparisons.

# Demographic Profile - Age

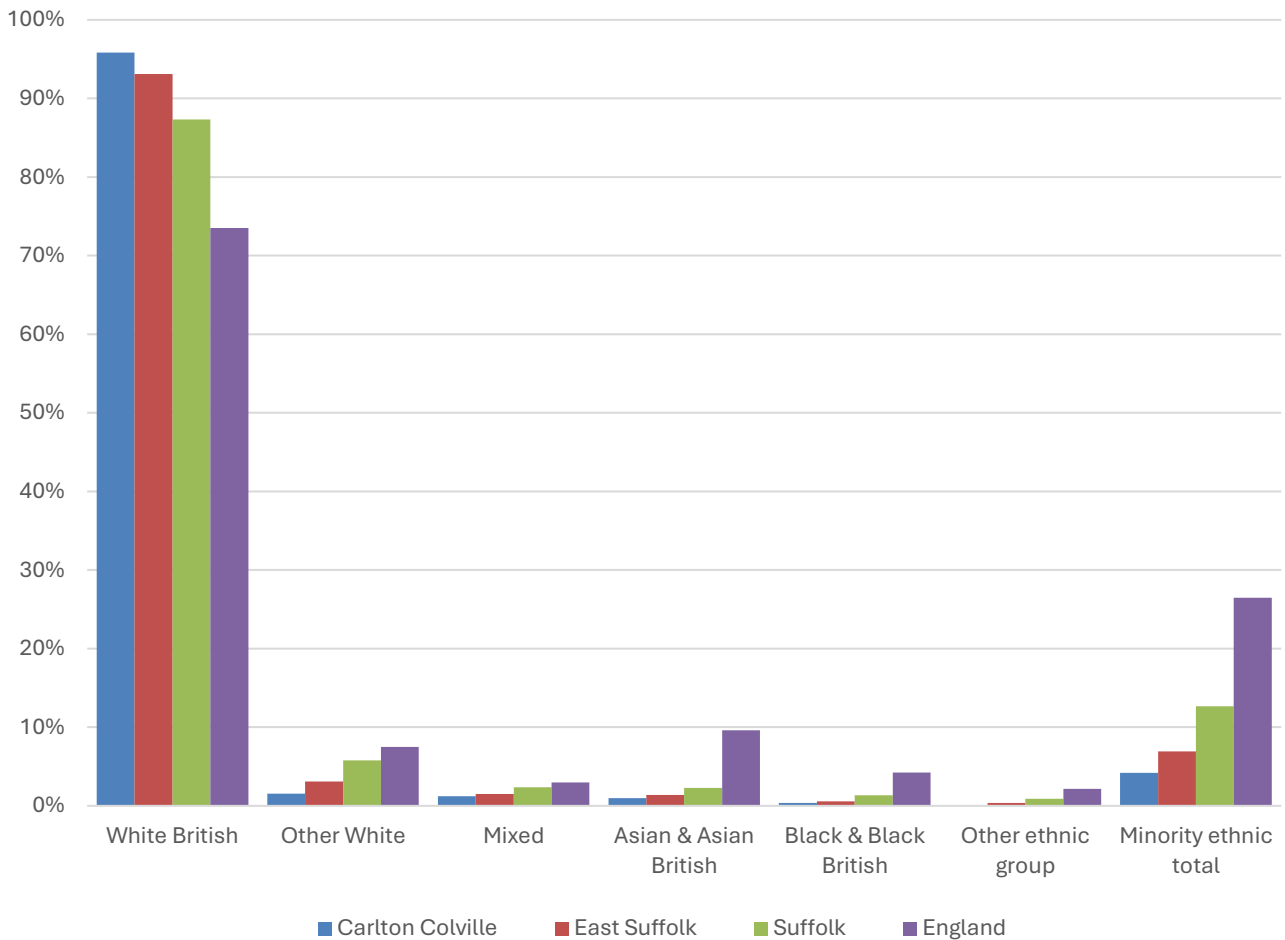
In mid-2024, the estimated population of Carlton Colville stood at 9,921, a decrease of 4.5% over the past decade. The age structure of the component wards and the division as a whole is set out below.

	Carlton Colville Division	Carlton Colville Ward	Carlton & Whitton Ward
<b>All Ages</b>	<b>9,921</b>	<b>8,415</b>	<b>1,506</b>
<b>0-4</b>	<b>458</b>	<b>375</b>	<b>83</b>
<b>5-9</b>	<b>596</b>	<b>487</b>	<b>109</b>
<b>10-14</b>	<b>629</b>	<b>543</b>	<b>86</b>
<b>15-19</b>	<b>587</b>	<b>495</b>	<b>92</b>
<b>20-24</b>	<b>452</b>	<b>375</b>	<b>77</b>
<b>25-29</b>	<b>548</b>	<b>444</b>	<b>104</b>
<b>30-34</b>	<b>641</b>	<b>525</b>	<b>116</b>
<b>35-39</b>	<b>662</b>	<b>560</b>	<b>102</b>
<b>40-44</b>	<b>636</b>	<b>530</b>	<b>106</b>
<b>45-49</b>	<b>585</b>	<b>496</b>	<b>89</b>
<b>50-54</b>	<b>693</b>	<b>555</b>	<b>138</b>
<b>55-59</b>	<b>779</b>	<b>667</b>	<b>112</b>
<b>60-64</b>	<b>649</b>	<b>544</b>	<b>105</b>
<b>65-69</b>	<b>512</b>	<b>450</b>	<b>62</b>
<b>70-74</b>	<b>458</b>	<b>397</b>	<b>61</b>
<b>75-79</b>	<b>476</b>	<b>449</b>	<b>27</b>
<b>80-84</b>	<b>248</b>	<b>230</b>	<b>18</b>
<b>85+</b>	<b>312</b>	<b>293</b>	<b>19</b>



- The age pyramid for Carlton Colville division is quite similar to that of England as a whole.
- There is a larger-than-average proportion of residents aged over 50, and a lower-than-average proportion of young adults (particularly females).
- The most common age group in the division is 55-59-year-olds (7.9% of the local population), followed by 50-54-year-olds (7%), and 35-39-year-olds (6.7%), the latter largely driven by an above average proportion of males.
- Just under a quarter (23%) of the population of Carlton Colville is of retirement age.

# Demographic Profile - Ethnicity

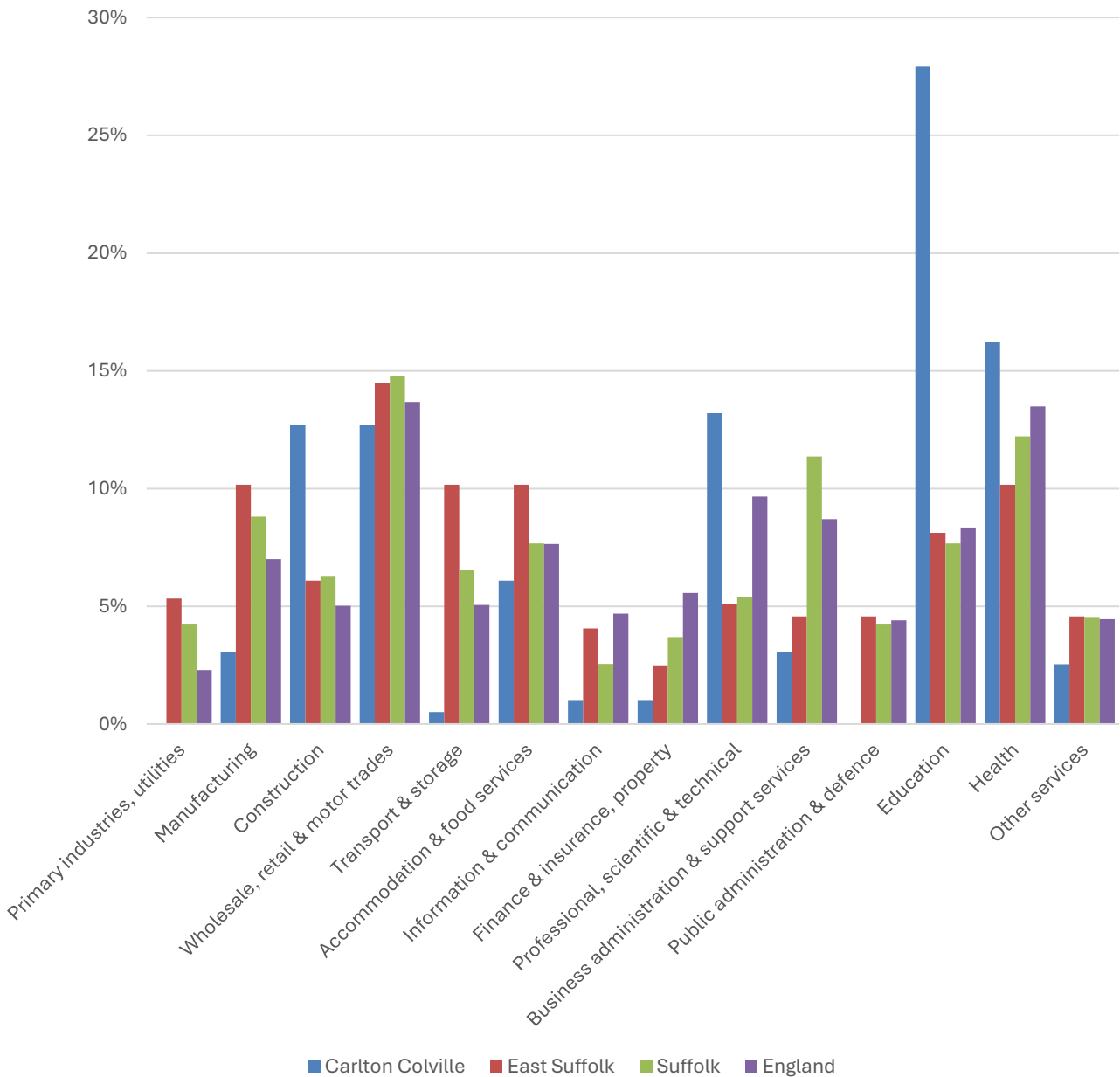


- According to the latest data (2021 Census), 95.8% of the population of Carlton Colville are White British.
- There were 417 (4.2%) people of minority ethnic origin in the division, less than the proportion in Suffolk as a whole and around a sixth of the England average.
- Carlton Colville also has a less ethnically diverse population than East Suffolk district.

	All people		White British		Other White		Mixed		Asian and Asian British		Black and Black British		Other Ethnic Group		Total minority ethnic population	
	Count	%	Count	%	Count	%	Count	%	Count	%	Count	%	Count	%	Count	%
Carlton Colville	9,988		9,571	95.8	155	1.6	122	1.2	99	1.0	36	0.4	5	0.1	417	4.2
East Suffolk	246,060		229,063	93.1	7,564	3.1	3,707	1.5	3,447	1.4	1,357	0.6	922	0.4	16,997	6.9
Suffolk	760,687		664,205	87.3	44,066	5.8	17,807	2.3	17,483	2.3	10,168	1.3	6,958	0.9	96,482	12.7
England				73.5		7.5		3.0		9.6		4.2		2.2		26.5

# Economy

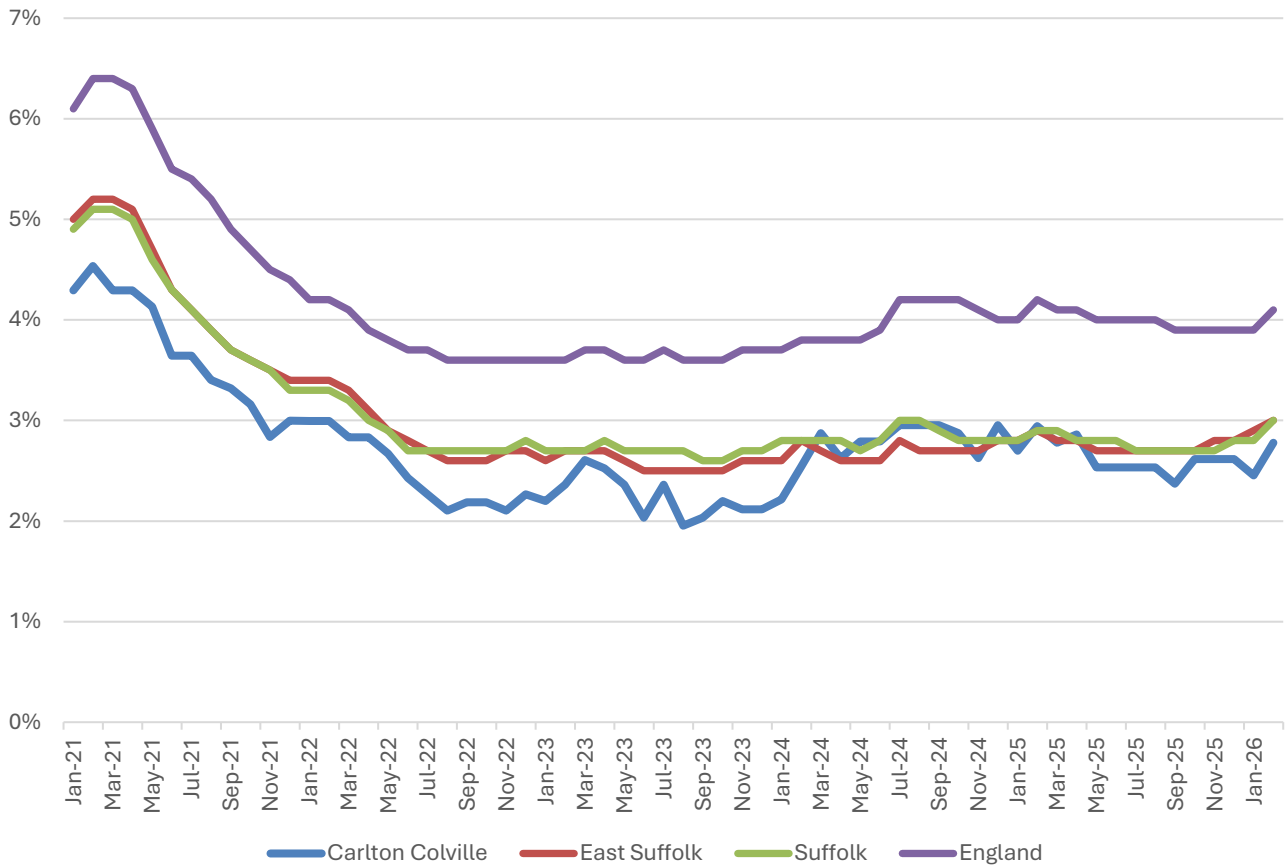
There are around 1,000 people employed in Carlton Colville.



- Education provides more than a quarter of jobs in Carlton Colville.
- Health (16.2% of local employment), professional, scientific and technical activities (13.2%), wholesale, retail and motor trades (12.7%) and construction (12.7%) are also important sectors in the division.

# Labour Market

## Out-of-work benefit claimant rate



- In common with East Suffolk, Suffolk and England as a whole, Carlton Colville saw a steady decline in the proportion of the working age population claiming of out-of-work benefits during 2021 following a peak during the COVID-19 pandemic.
- Since then, the claimant rate in the division has been largely stable at between 2% and 3%.
- The claimant rate in Carlton Colville tended to be slightly below the district and county figures prior to spring 2024, but has been similar to these comparator areas since then.
- The claimant rate in the division is consistently around 1-1.5 percentage points below the national benchmark.

# Schools

## School Information

### Schools in the Division

Name	Phase	Academy Status	No. pupils	Average cohort size at:			
				Foundation Stage (age 4-7)	KS2 (age 7-11)	KS4 (age 14-16)	KS5 (age 16-18)
Grove Primary School	Primary	AS	304	43	42		
Sunrise Academy	Special	F	51		4	9	

Academy Status key: AS = Academy Sponsored, AC = Academy Converter, LA = LA Maintained, F = Free

### Ofsted information

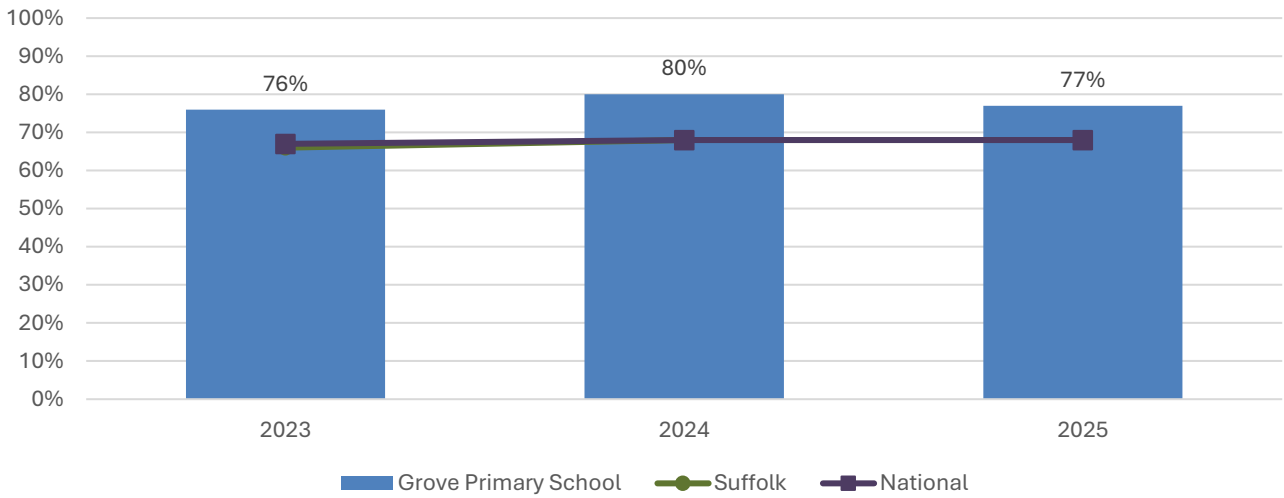
Name	Overall effectiveness	Effectiveness of leadership and	Behaviour and attitudes	Personal development	Early years provision (if applicable)	Quality of education	Last inspection date
Grove Primary School	2	2	2	2	1	2	11/10/2022
Sunrise Academy	5	2	2	2	9	2	25/02/2025

Code	Judgement	Code	Judgement
0	Insufficient evidence	SM	Special measures
1	Outstanding	8	Does not apply
2	Good	9	No judgement
3	Requires improvement	Null	No data available
4	Inadequate	Not judged	Not judged
SWK	Serious weaknesses	5	No overall grade

# School Attainment

## Foundation Stage Profile (reception)

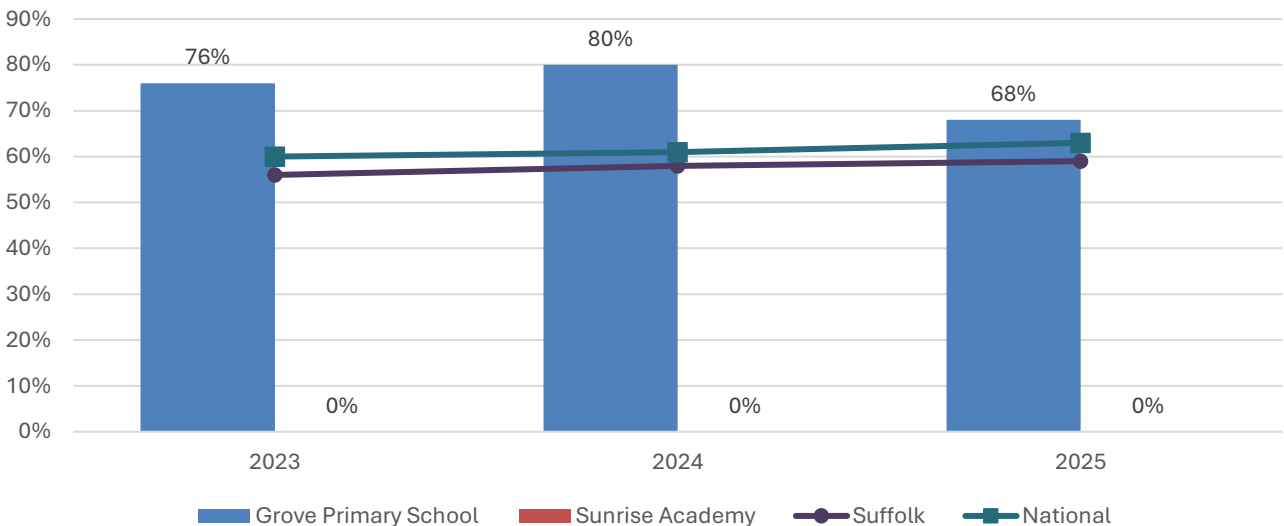
% pupils achieving Good Level of Development (GLD)



- Foundation Stage attainment at Grove Primary School has been higher than the Suffolk and national average in each of the last three years.
- In 2025, 77% of pupils at Grove Primary achieved a Good Level of Development at Foundation Stage, nine percentage points above the national figure.

## Key Stage 2 (age 11)

% pupils achieving the Expected Level or better in Reading, Writing and Mathematics



- Key stage 2 attainment at Grove Primary School has been consistently well above the county and national average over the past three years of data, despite a decline in 2025.
- In 2025, 68% of pupils at Grove Primary achieved the expected level or better in reading, writing and mathematics, 5 percentage points above the national figure and 9 above the Suffolk average.

## NEET % (Not in Education, Employment or Training)



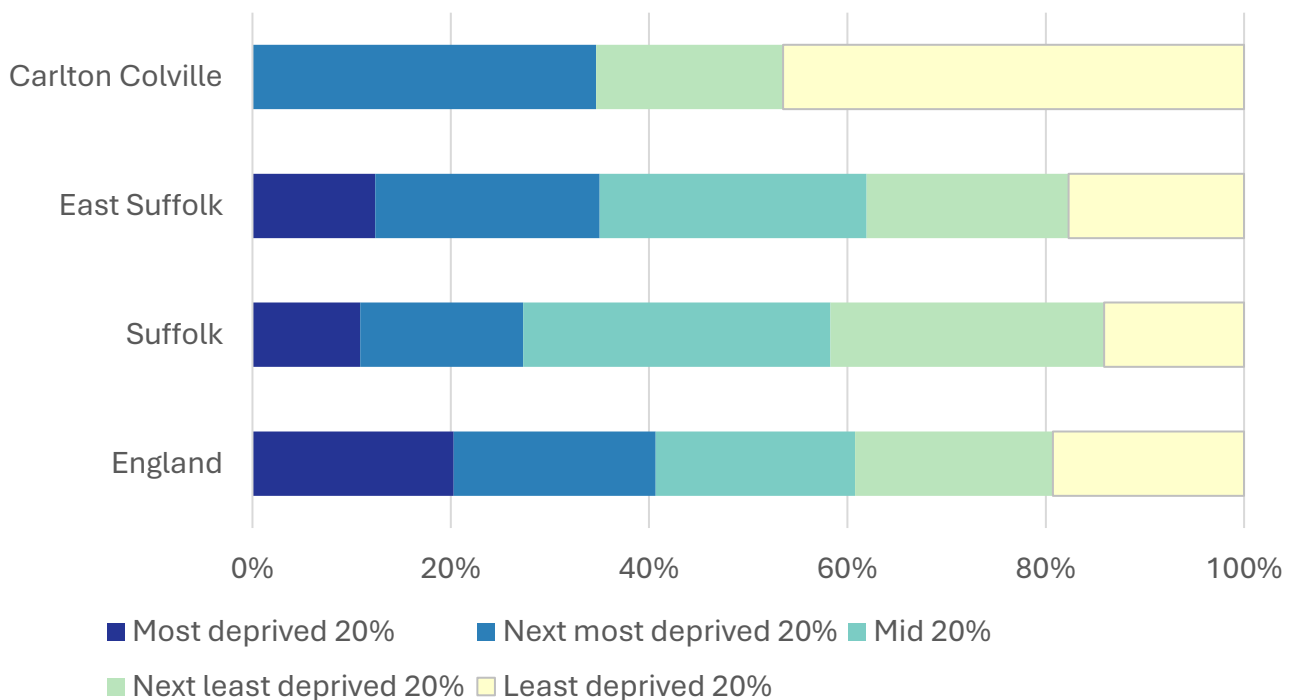
- In February 2026, 3.4% of 16–17-year-olds in Carlton Colville were classified as NEET (not in education, employment or training).
- NEET levels fluctuate considerably according to the time of year and due to small numbers of 16-17-year-olds in the division, typically being at their lowest at the beginning of a new school year.
- In Carlton Colville, NEET levels are generally below the district and county figures.

## Index of Multiple Deprivation (IMD) 2025 (see map overleaf)

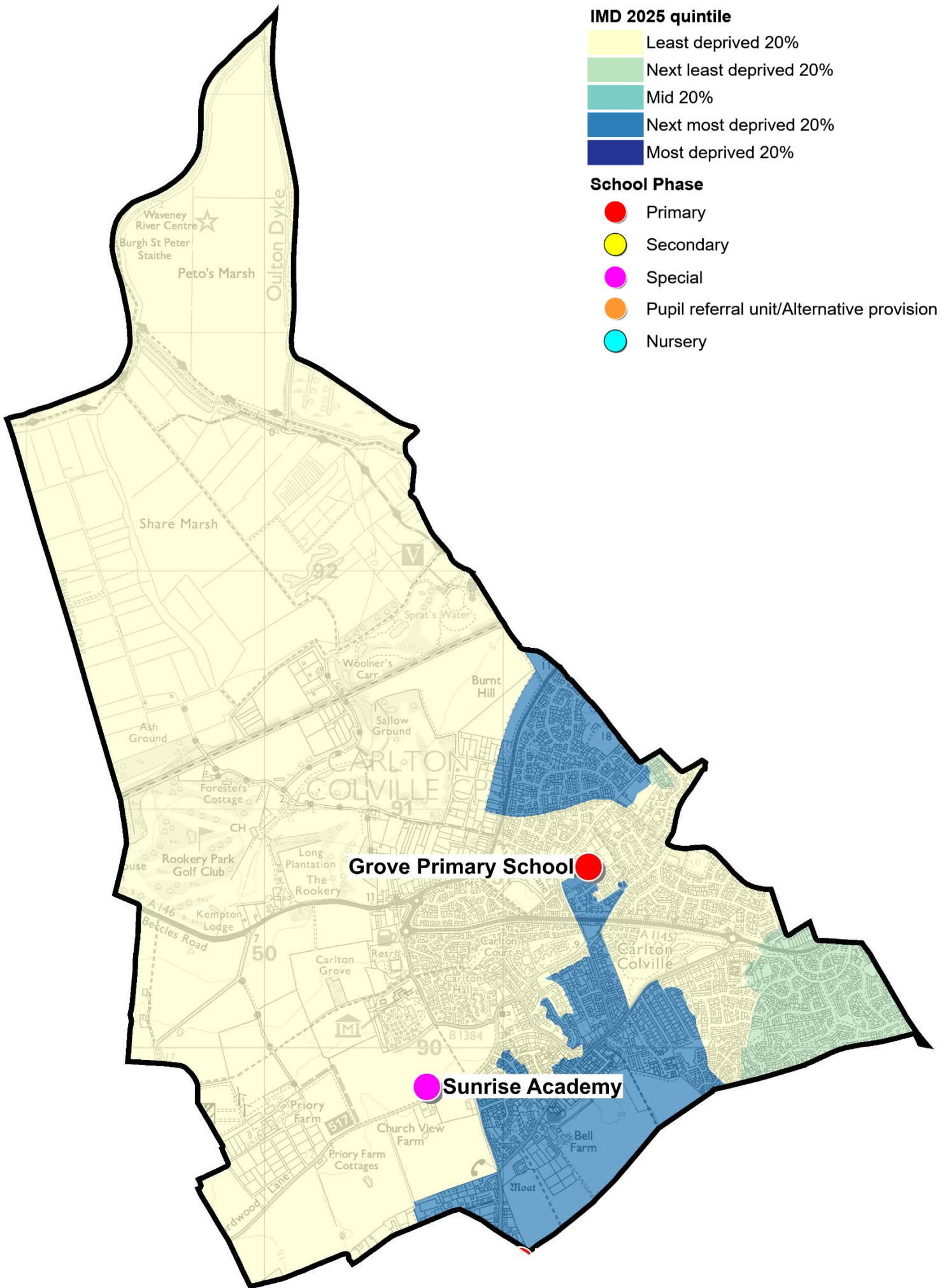
The IMD combines a number of indicators, chosen to cover a range of economic, social and housing issues, into a single deprivation score for each small area in England. This allows each area to be ranked relative to one another according to their level of deprivation. Small areas (Lower Super Output Areas, average population 1,700) are most commonly described as being in 1 of 5 quintile bands. The bottom quintile represents the 20% of areas that are the most deprived in England; these are shaded pale yellow on the map. The top quintile represents the least deprived areas in England and is shaded dark blue.

The Index is widely used to analyse patterns of deprivation, identify areas that would benefit from special initiatives or programmes and as a tool to determine eligibility for specific funding streams.

The chart below shows the percentage of the population of the division that live in areas ranked among each of the five quintiles of deprivation, alongside the district, county and England comparators.



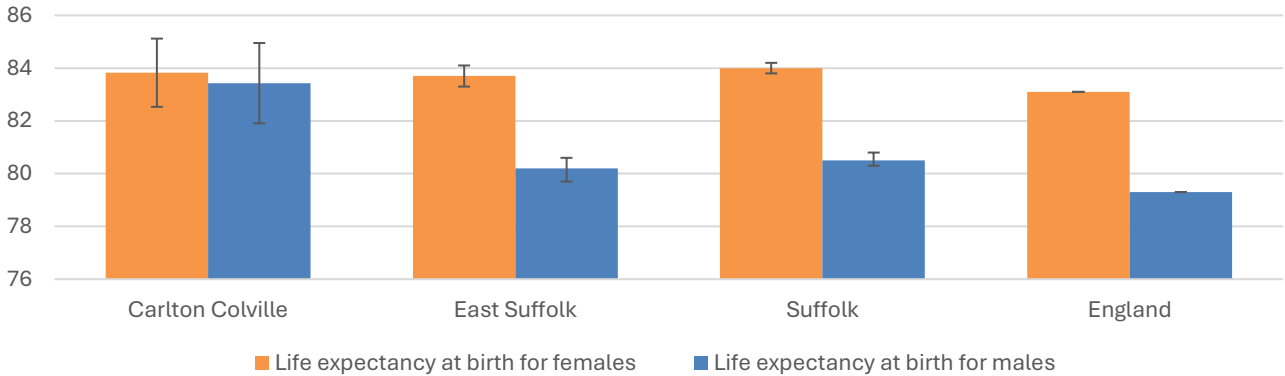
- The 2025 IMD shows that deprivation levels in Carlton Colville are quite varied, with parts of the division ranked in three of the five deprivation quintiles.
- Almost half of the population of Carlton Colville live in areas that are ranked among the least deprived 20% of places in England. A further 19% of the population lives in an area in the southeast of the division that is ranked in the second least deprived quintile.
- The remaining third of the population of the division live in neighbourhoods ranked in the second most deprived quintile (i.e. 20-40% most deprived)
- No part of the division is ranked in the most deprived quintile.
- See the map overleaf for the distribution of IMD 2025 results across the division.



# Health

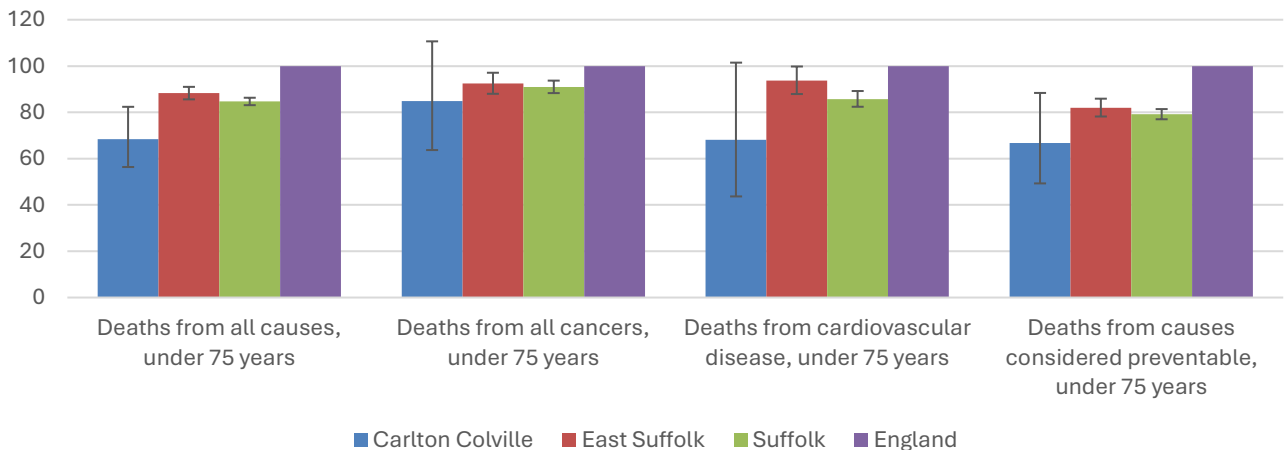
The local data used here is based on relatively small numbers. The confidence limits provide an indication of the reliability of the data. The 95% confidence intervals utilised on the chart provide a range within which there is 95% chance of the true result lying.

## Life expectancy at birth



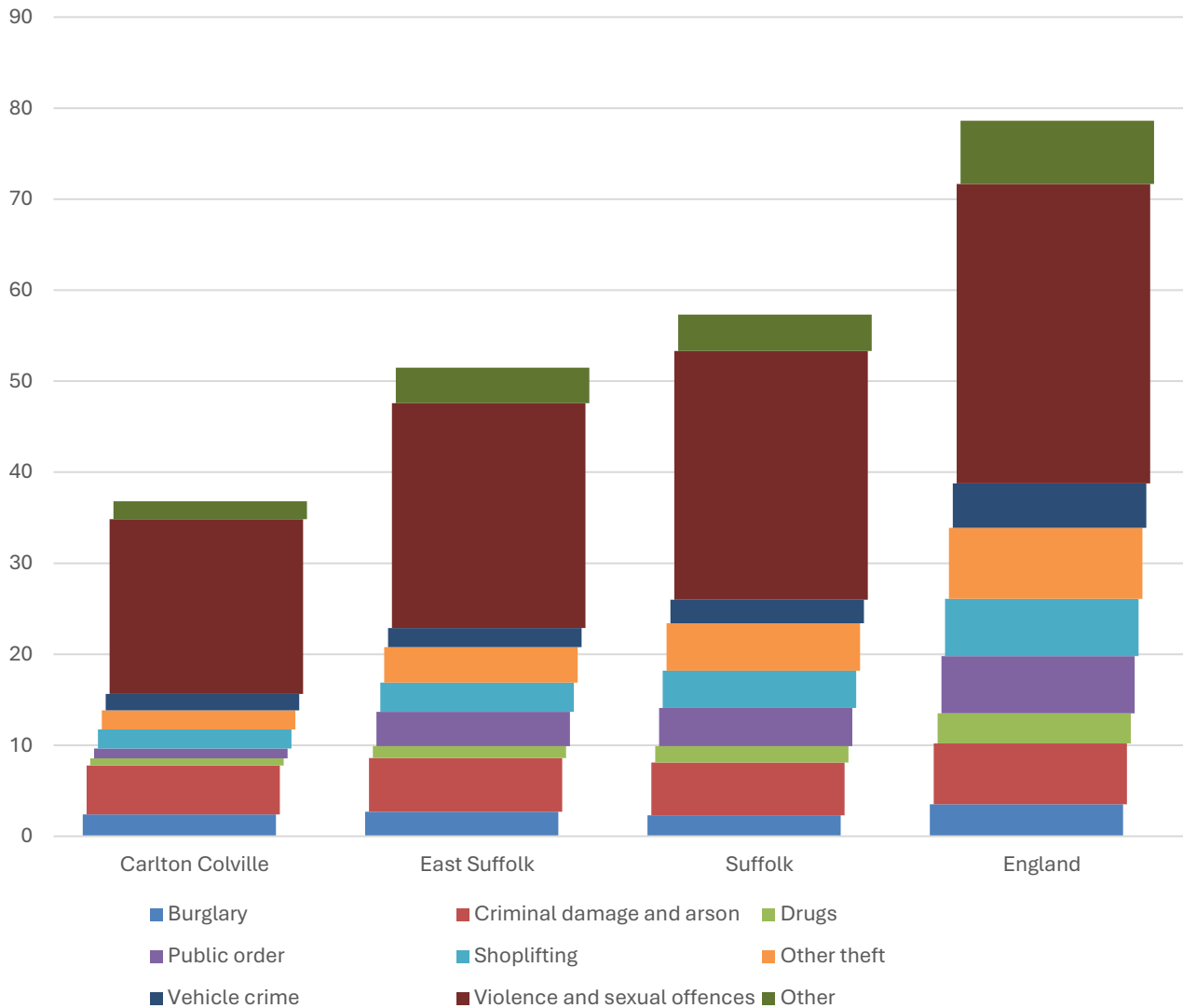
- Estimated life expectancy at birth for females in Carlton Colville is statistically similar to the East Suffolk, Suffolk and national averages.
- For males, estimated life expectancy in Carlton Colville is statistically significantly higher than the district, county and national averages.
- The most recent life expectancy at birth estimates for Carlton Coville are 83.8 for females (the England average is 83.1), and 83.4 for males (compared to 79.3 nationally).

## Deaths, under 75 years, standardised mortality ratio



- Estimated standardised mortality ratios for early deaths from all causes, all cancers, cardiovascular disease and causes considered preventable in Carlton Colville are below 100, indicating that deaths in under 75s due to these causes are lower than in England.
- Confidence intervals around these estimates are wide for local data, but the SMRs for deaths from all causes and from causes considered preventable are statistically significantly lower than England.
- The standardised mortality ratio data shown here means that for every 100 early deaths from all causes across England as a whole, there are an estimated 68 comparable deaths in Carlton Colville.

# Crime & Community Safety



- Crime levels in Carlton Colville are low compared to both the district and county averages, with 37 crimes per 1,000 residents in the division in the 12 months to the end of January 2026, compared to 51 in East Suffolk and 57 countywide.
- Most types of crime occur at a lower rate in the division than the district and county average. Burglaries (2.4 recorded incidents per 1,000 residents) occur at a slightly higher rate than across Suffolk as a whole (2.3).
- By far the most common type of crime recorded during this period was violence and sexual offences, which accounted for just over half of all recorded crimes in the division.

## Additional Information

### Parishes in Division

Carlton Colville  
 Lowestoft (part)

## Data sources

Category	Indicator	Source
Demographic Profile	Quinary population table 2024	ONS 2024 mid-year population estimates
	Population pyramid 2024	ONS 2024 mid-year population estimates
	Ethnicity 2021	ONS 2021 Census
Economy	Employment by broad industrial sector 2024	ONS Business Register and Employment Survey via NOMIS
Labour market	Claimant count: The number of people claiming Jobseeker's Allowance plus those who claim Universal Credit who are out of work (% 16-64 population) January 2021-February 2026	DWP via NOMIS
Education	School information and attainment 2023-2025	Suffolk County Council CYP iHub
	% 16-17-year-olds NEET (Not in Employment, Education or Training) March 2021 to February 2026	Suffolk County Council CYP iHub via the Suffolk Observatory
Deprivation	Index of Multiple Deprivation 2025	Ministry of Housing, Communities and Local Government
Health	Life expectancy at birth 2016-2020 (2018-2020 for comparator areas)	Office for Health Improvement and Disparities
Health	Standardised mortality ratio for deaths from all causes, cancer, cardiovascular disease, and from causes considered preventable (under 75 years), 2016-2020 (2019-2023 for comparator areas). The standardised mortality ratio is the ratio of observed deaths in the study group to expected deaths in the general population	Office for Health Improvement and Disparities
Community Safety	Recorded crime rate per 1,000 resident population February 2025 to January 2026	Data.police.uk via the Suffolk Observatory

For more data and information about Carlton Colville Electoral Division, see the Suffolk Observatory [www.suffolkobservatory.info](http://www.suffolkobservatory.info)

