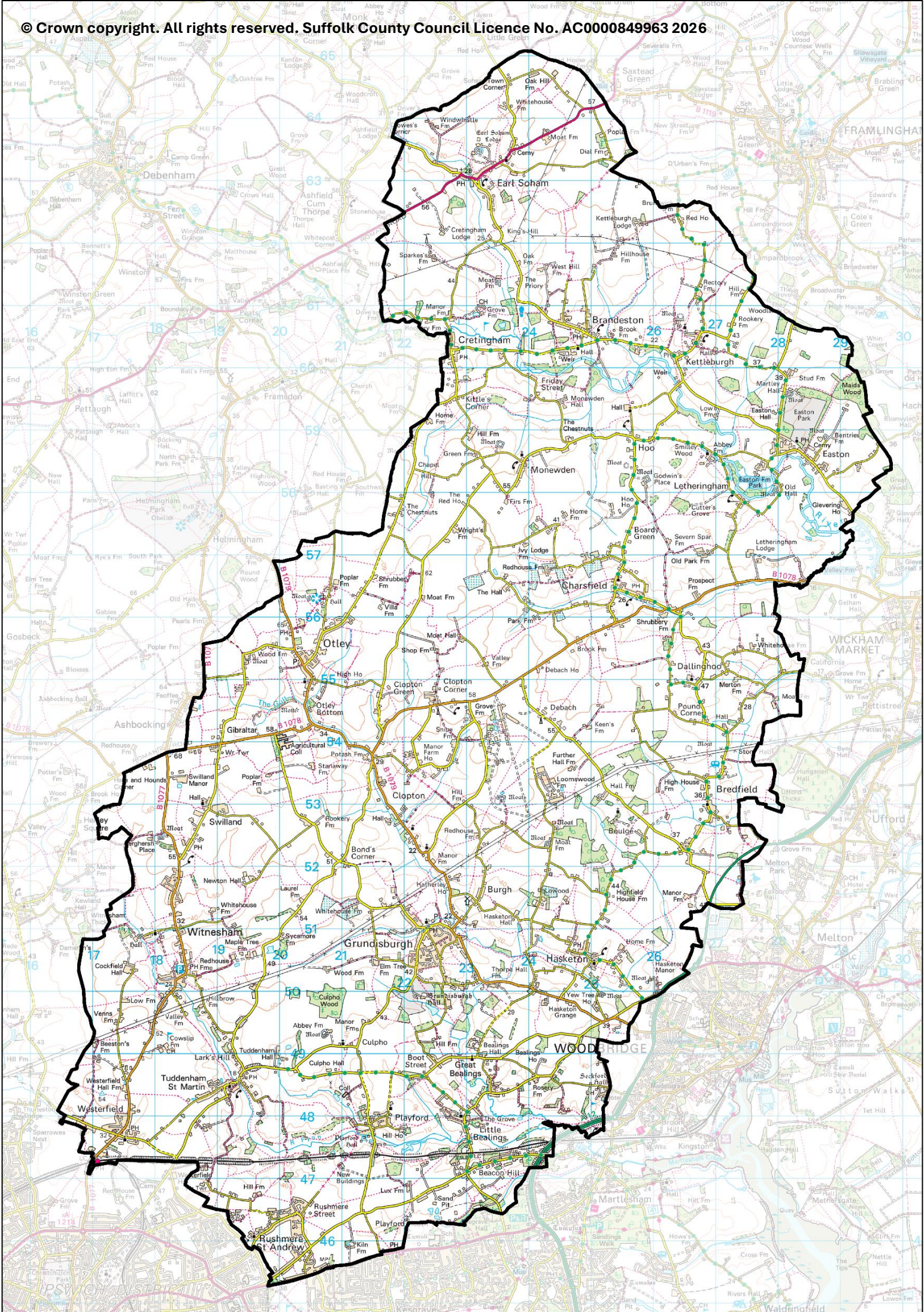


Carlford

County Electoral Division profile
May 2026

This division comprises Carlford & Fynn Valley Ward in its entirety, and part of Framlingham Ward





Contents

- Demographic Profile: Age & Ethnicity
- Economy and Labour Market
- Schools & NEET
- Index of Multiple Deprivation
- Health
- Crime & Community Safety
- Additional Information
- Data Sources

Electoral Division Profiles: an introduction

These profiles have been produced to support elected members, constituents and other interested parties in understanding the demographic, economic, social and educational profile of their neighbourhoods. We have used the latest data available at the time of publication.

Much more data is available from national and local sources than is captured here, but it is hoped that the profile will be a useful starting point for discussion, where local knowledge and experience can be used to flesh out and illuminate the information presented here.

The profile can be used to help look at some fundamental questions e.g.

- Does the age profile of the population match or differ from the national profile?
- Is there evidence of the ageing profile of the county in all the wards in the Division or just some?
- How diverse is the community in terms of ethnicity?
- What is the impact of deprivation on families and residents?
- Does there seem to be a link between deprivation and school performance?
- What is the breakdown of employment sectors in the area?
- Is it a relatively healthy area compared to the rest of the district or county?
- What sort of crime is prevalent in the community?

A vast amount of additional data is available on the **Suffolk Observatory**

www.suffolkobservatory.info

The Suffolk Observatory is a free online resource that contains all Suffolk's vital statistics; it is the one-stop-shop for information and intelligence about Suffolk. Through data, reports and maps, the Suffolk Observatory provides a comprehensive picture of the County. It is a great source for useful facts and figures that can be used for writing reports and presentations, informing strategic and business planning, preparing funding applications or supporting academic research. Data is presented around the key themes of population, children and young people, health and social care, housing, crime and community safety, deprivation, economy and employment and environment. All areas of the county are covered, right down to district, electoral division, ward and parish level, with information easily accessible in a variety of formats. You can also build your own reports for custom areas.

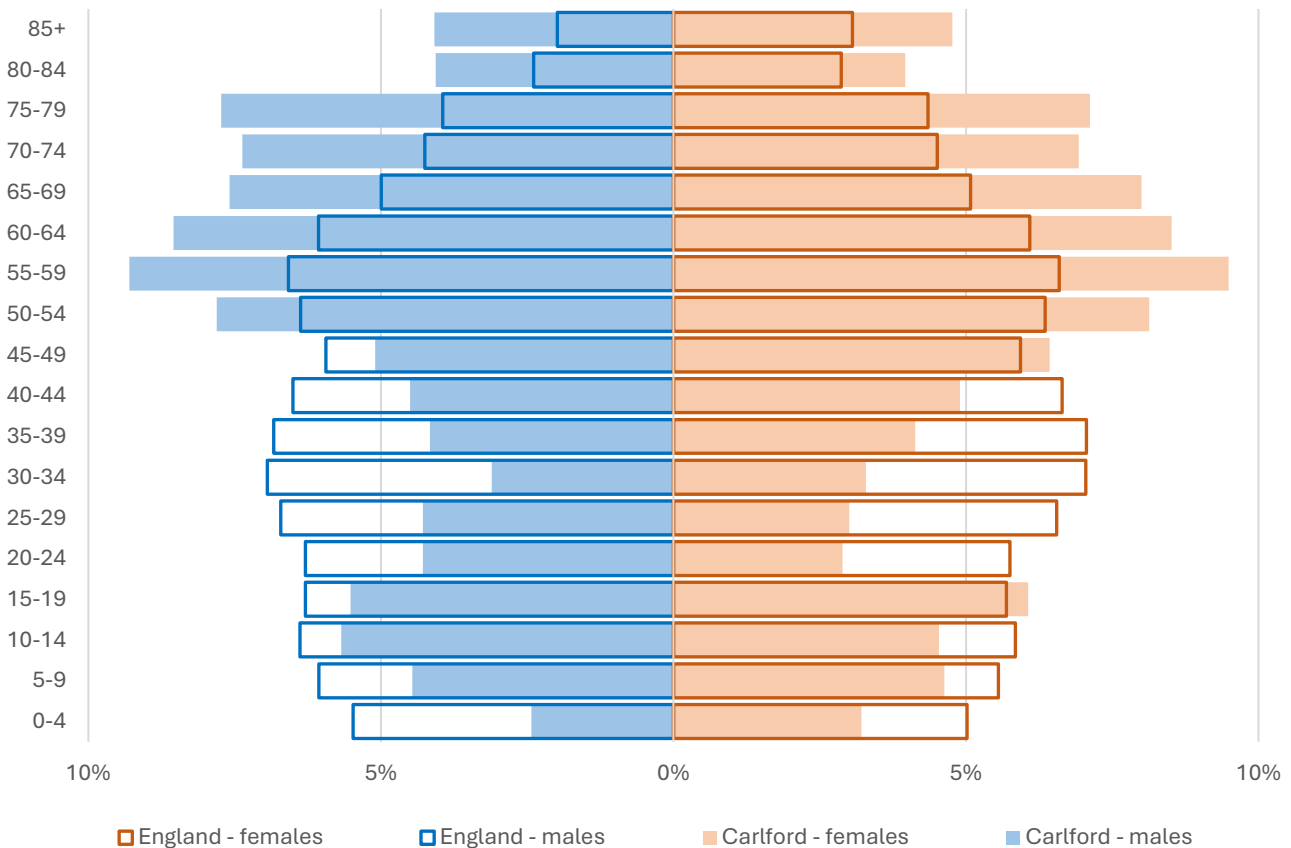
Technical Notes:

1. Where electoral divisions do not exactly match the boundaries at which the data is available (e.g. ward, Output Area or Lower Super Output Area), we have adopted a "best-fit" approach to produce a dataset.
2. District, county and national level data is provided where possible to provide a context for comparisons.

Demographic Profile - Age

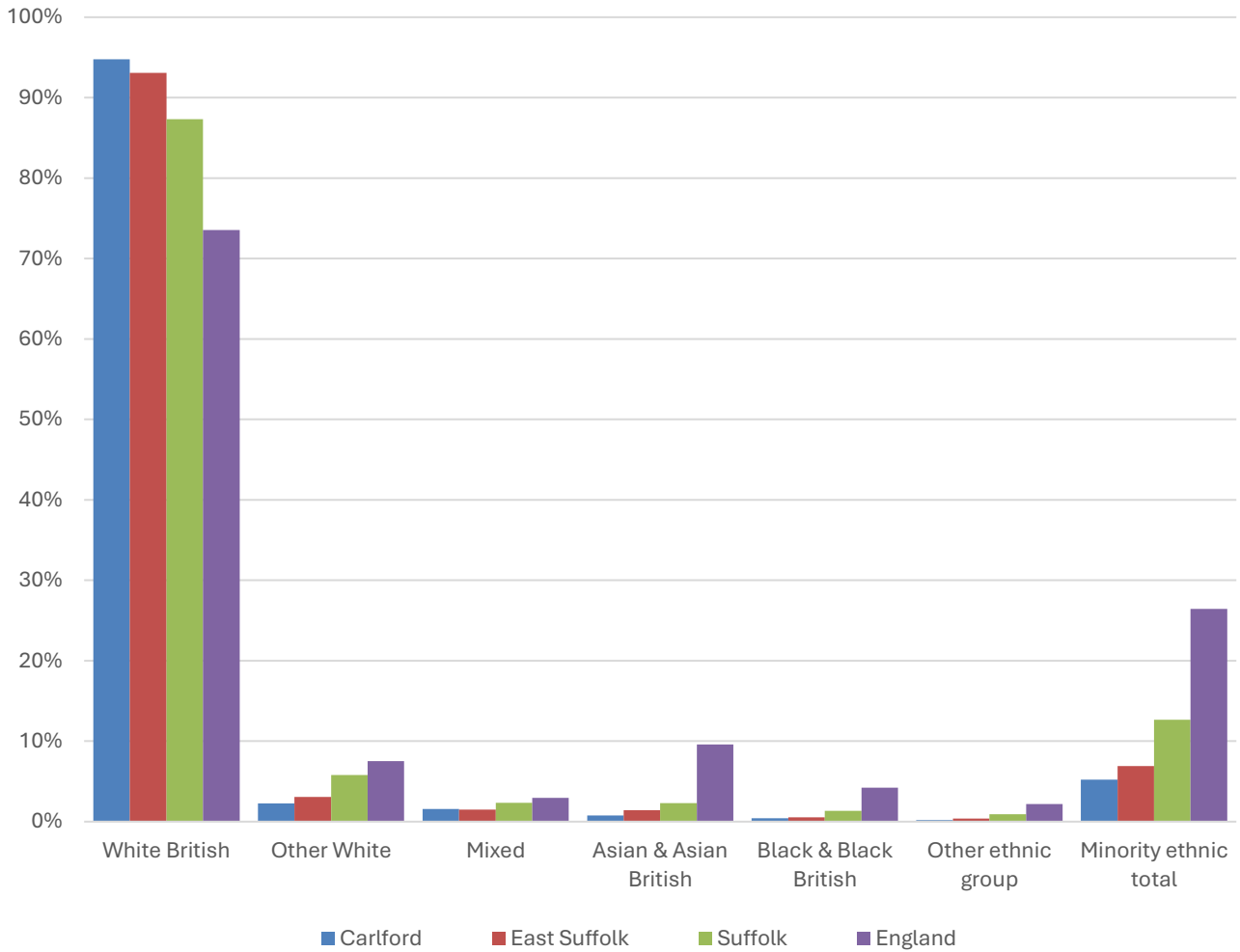
In mid-2024, the estimated population of Carlford stood at 10,247, an increase of 4.3% over the past decade. The age structure of the component wards and the division as a whole is set out below.

	Carlford Division	Carlford & Fynn Valley Ward	Framlingham Ward
All Ages	10,247	8,481	1,766
0-4	290	243	47
5-9	466	396	70
10-14	522	424	98
15-19	594	497	97
20-24	366	308	58
25-29	372	320	52
30-34	328	275	53
35-39	425	353	72
40-44	482	413	69
45-49	592	478	114
50-54	817	700	117
55-59	963	801	162
60-64	874	706	168
65-69	799	651	148
70-74	732	600	132
75-79	760	621	139
80-84	411	339	72
85+	454	356	98



- The age pyramid for Carlford division shows a considerably higher proportion of people aged 50 and over than in England as a whole.
- The most common age group in the division is 55-59-year-olds (9.4% of the local population), followed by 60-64-year-olds (8.5%), and 50-54-year-olds (8%).
- Just over 30% of the population of Carlford is of retirement age.
- The 20-44 age group is particularly underrepresented in the division.

Demographic Profile - Ethnicity

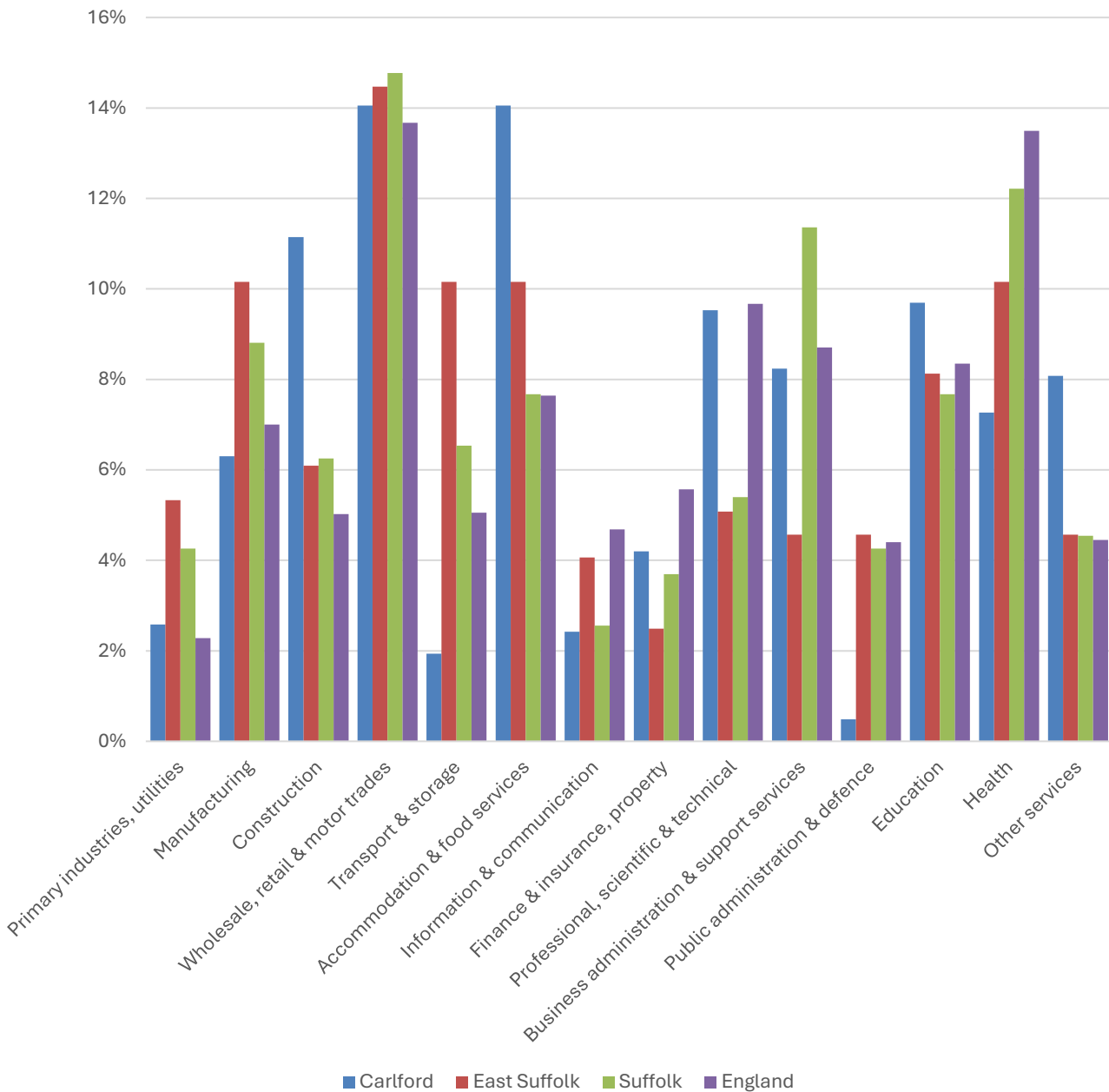


- According to the latest data (2021 Census), 94.8% of the population of Carlford are White British.
- There were 532 (5.2%) people of minority ethnic origin in the division, less than the proportion in Suffolk as a whole and around a fifth of the England average.
- Carlford has a similar ethnic diversity profile to East Suffolk district, and lower proportions of all minority ethnic groups than Suffolk as a whole.

	All people		White British		Other White		Mixed		Asian and Asian British		Black and Black British		Other Ethnic Group		Total minority ethnic population	
	Count	%	Count	%	Count	%	Count	%	Count	%	Count	%	Count	%	Count	%
Carlford	10,195		9,663	94.8	232	2.3	159	1.6	77	0.8	44	0.4	20	0.2	532	5.2
East Suffolk	246,060		229,063	93.1	7,564	3.1	3,707	1.5	3,447	1.4	1,357	0.6	922	0.4	16,997	6.9
Suffolk	760,687		664,205	87.3	44,066	5.8	17,807	2.3	17,483	2.3	10,168	1.3	6,958	0.9	96,482	12.7
England				73.5		7.5		3.0		9.6		4.2		2.2		26.5

Economy

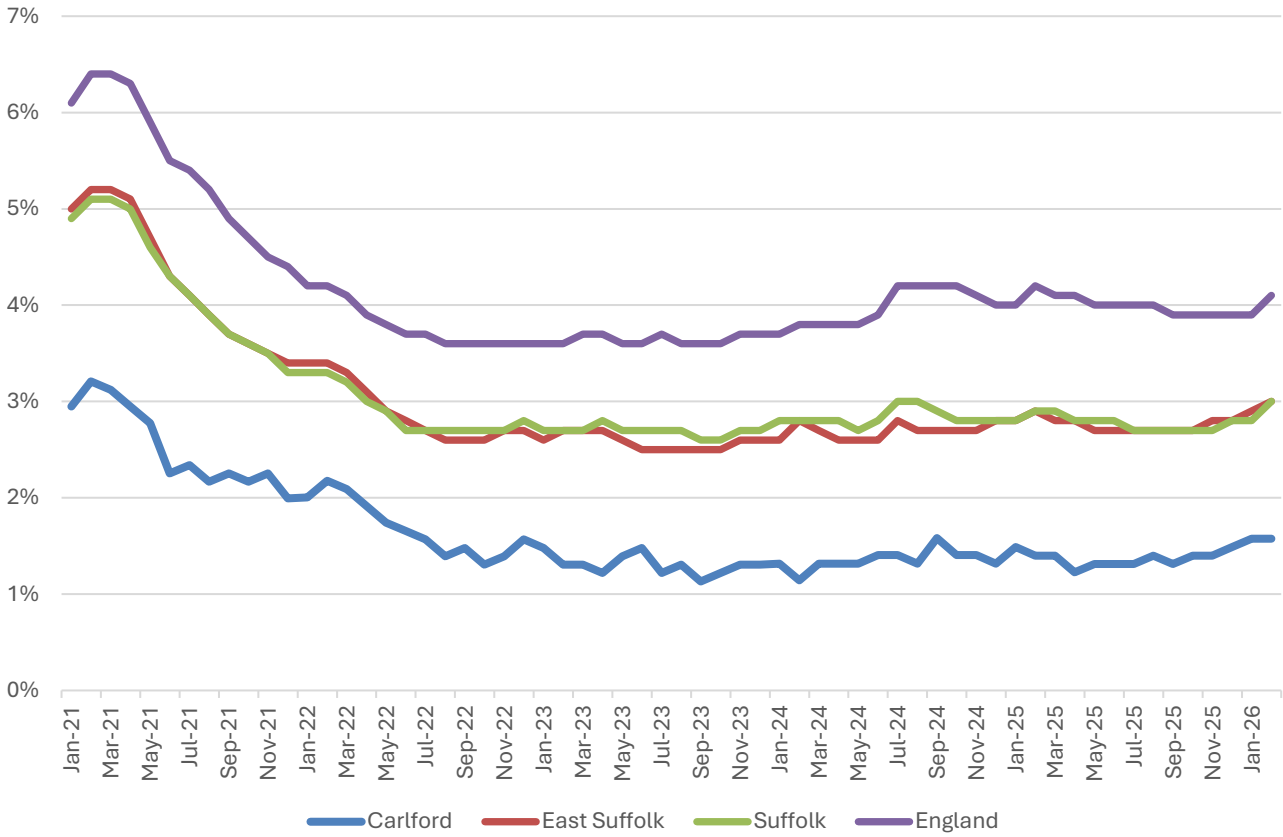
There are around 3,100 people employed in Carlford.



- The employment profile in Carlford is varied. There is no reliance on one particular sector in the division.
- Wholesale, retail and motor trades and accommodation and food services are the two largest sectors in terms of employment, both providing 14% of jobs in the division.
- Around one in nine jobs in Carlford is in the construction sector, more than double the proportion nationally.
- Professional, scientific and technical activities (9.5% of employment in the division), education (9.7%), and business administration and support services (8.2%) are also important sectors.

Labour Market

Out-of-work benefit claimant rate



- In common with East Suffolk, Suffolk and England as a whole, Carlford saw a steady decline in the proportion of the working age population claiming out-of-work benefits during 2021 following a peak during the COVID-19 pandemic.
- Since then, the claimant rate in the division has been largely stable at between 1.1% and 1.6%.
- The claimant rate in Carlford is consistently around 1.5 percentage points below the district and county figures, and 2.5 percentage points below the national average.

Schools

School Information

Schools in the Division

Name	Phase	Academy Status	No. pupils	Average cohort size at:			
				Foundation Stage (age 4-7)	KS2 (age 7-11)	KS4 (age 14-16)	KS5 (age 16-18)
Bealings School	Primary	LA	104	14	15		
Charsfield CofE Primary School	Primary	AC	34	3	5		
Earl Soham Community Primary School	Primary	LA	78	9	14		
Easton Primary School	Primary	AC	73	8	13		
Grundisburgh Primary School	Primary	LA	169	23	22		
Otley Primary School	Primary	LA	51	6	5		
Witnesham Primary School	Primary	LA	90	12	13		

Academy Status key: AS = Academy Sponsored, AC = Academy Converter, LA = LA Maintained, F = Free

Ofsted information

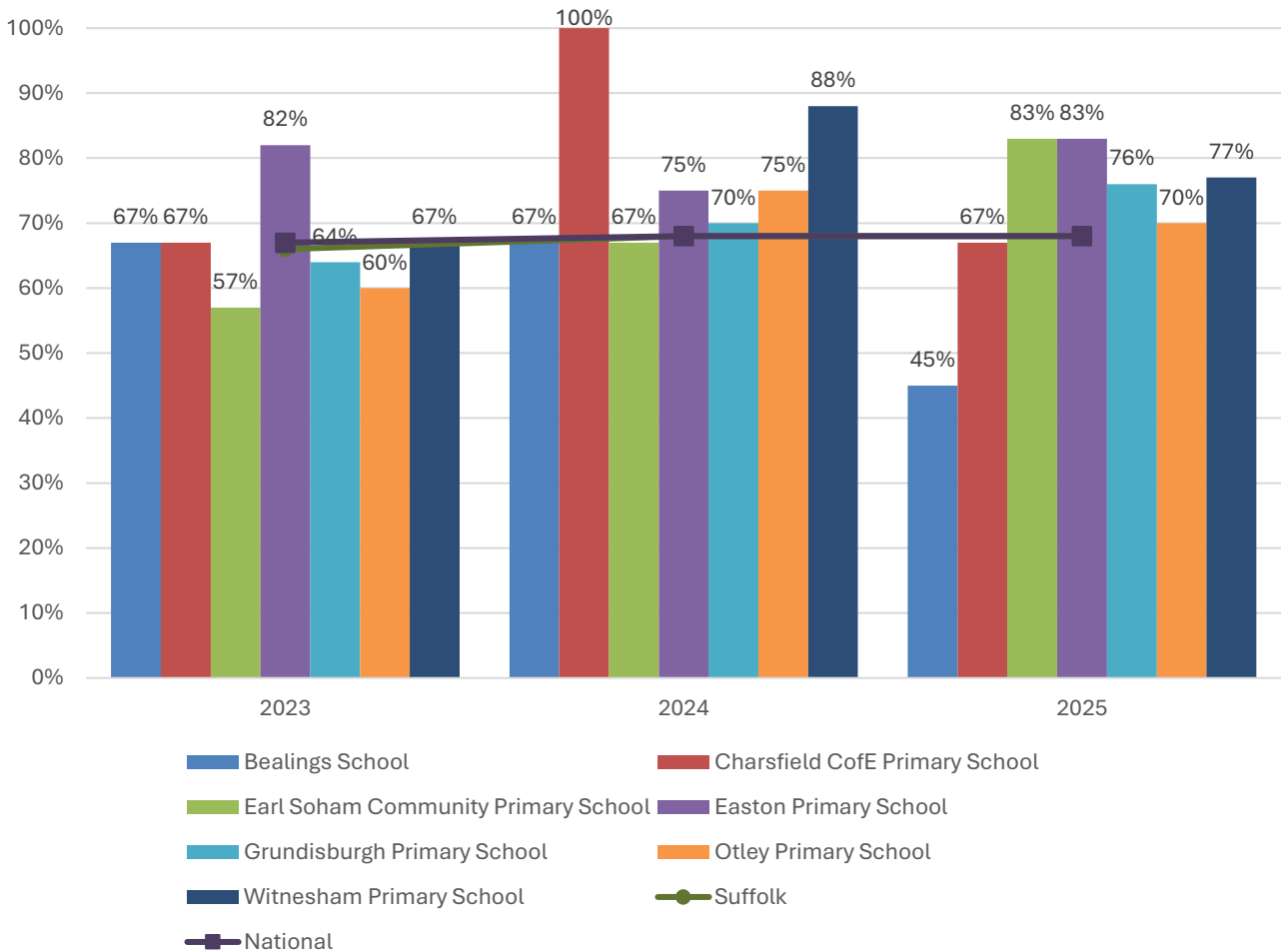
Name	Overall effectiveness	Effectiveness of leadership and management	Behaviour and attitudes	Personal development	Early years provision (if applicable)	Quality of education	Last inspection date
Bealings School	2	2	2	1	2	2	10/07/2024
Charsfield CofE Primary School	2	2	9	9	9	9	20/03/2014
Earl Soham Community Primary School	2	2	2	2	2	2	01/05/2024
Easton Primary School	2	2	9	9	9	9	17/10/2012
Grundisburgh Primary School	2	2	9	9	8	9	23/03/2012
Otley Primary School	5	2	2	2	2	2	17/06/2025
Witnesham Primary School	2	2	2	2	2	2	09/11/2022

Code	Judgement	Code	Judgement
0	Insufficient evidence	SM	Special measures
1	Outstanding	8	Does not apply
2	Good	9	No judgement
3	Requires improvement	Null	No data available
4	Inadequate	Not judged	Not judged
SWK	Serious weaknesses	5	No overall grade

School Attainment

Foundation Stage Profile (reception)

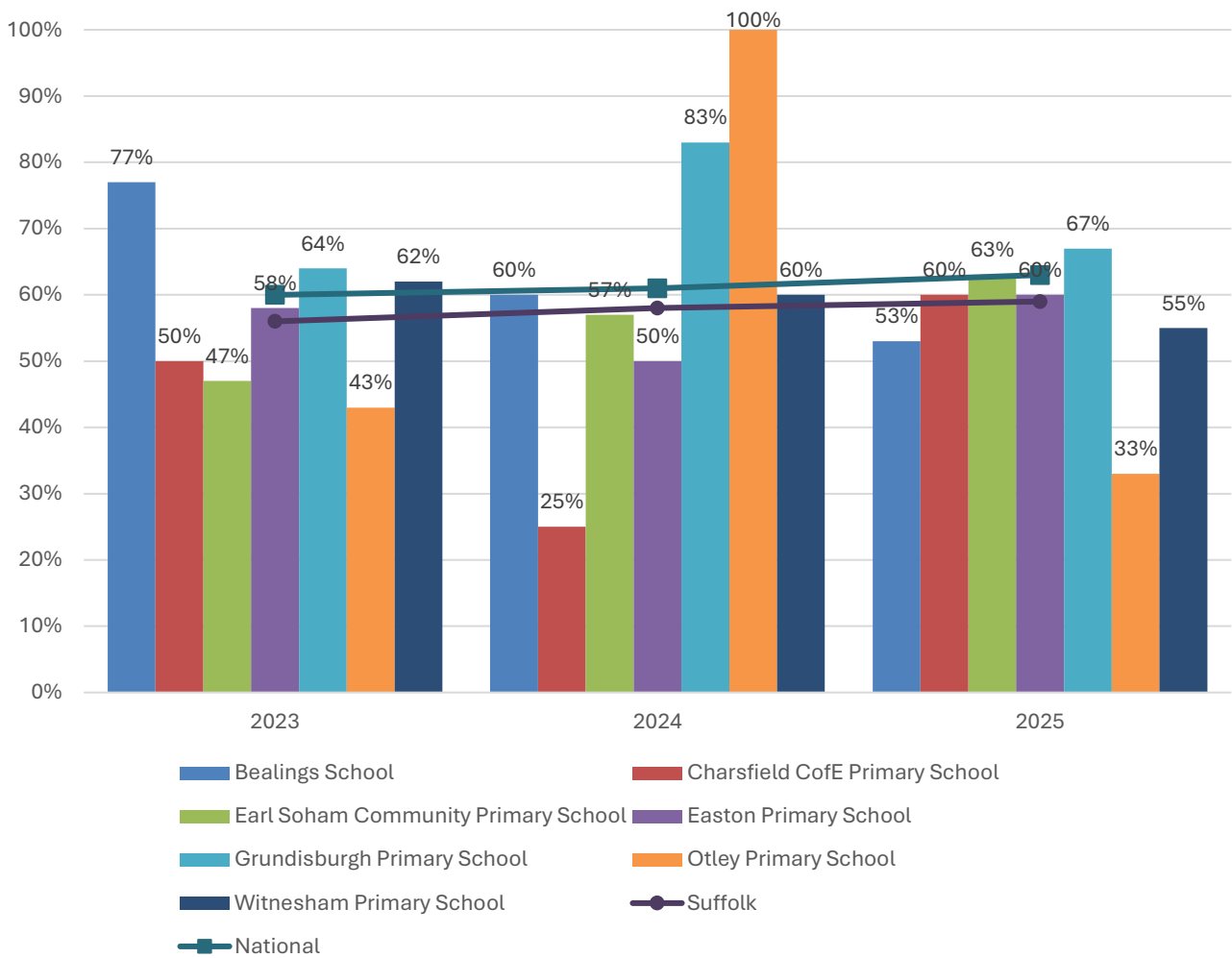
% pupils achieving Good Level of Development (GLD)



- Foundation Stage attainment at primary schools in Carlford has been mainly at or above the national average during the last three years.
- However, only Easton Primary School has seen consistently above average FS attainment over this period.
- The percentage of pupils who achieved a Good Level of Development at Foundation Stage has not been consistently below average at any school in the division.
- It should be noted that cohort sizes at these schools are small and therefore more subject to significant fluctuations from one year to the next.

Key Stage 2 (age 11)

% pupils achieving the Expected Level or better in Reading, Writing and Mathematics



- Key stage 2 attainment at schools in Carlford has been inconsistent over the last three years.
- The percentage of pupils who achieved the expected level or better in reading, writing and mathematics has been above average in all three years at just one school in the division; Grundisburgh Primary.
- KS2 attainment has been below average at two schools in Carlford; Charsfield Church of England, and Easton Primary Schools. However, attainment at Easton Primary was within three percentage points of the national benchmark in 2023 and 2025.
- Again, it's important to be aware that cohort sizes at these schools are small and therefore more prone to significant fluctuations from one year to the next.

NEET % (Not in Education, Employment or Training)



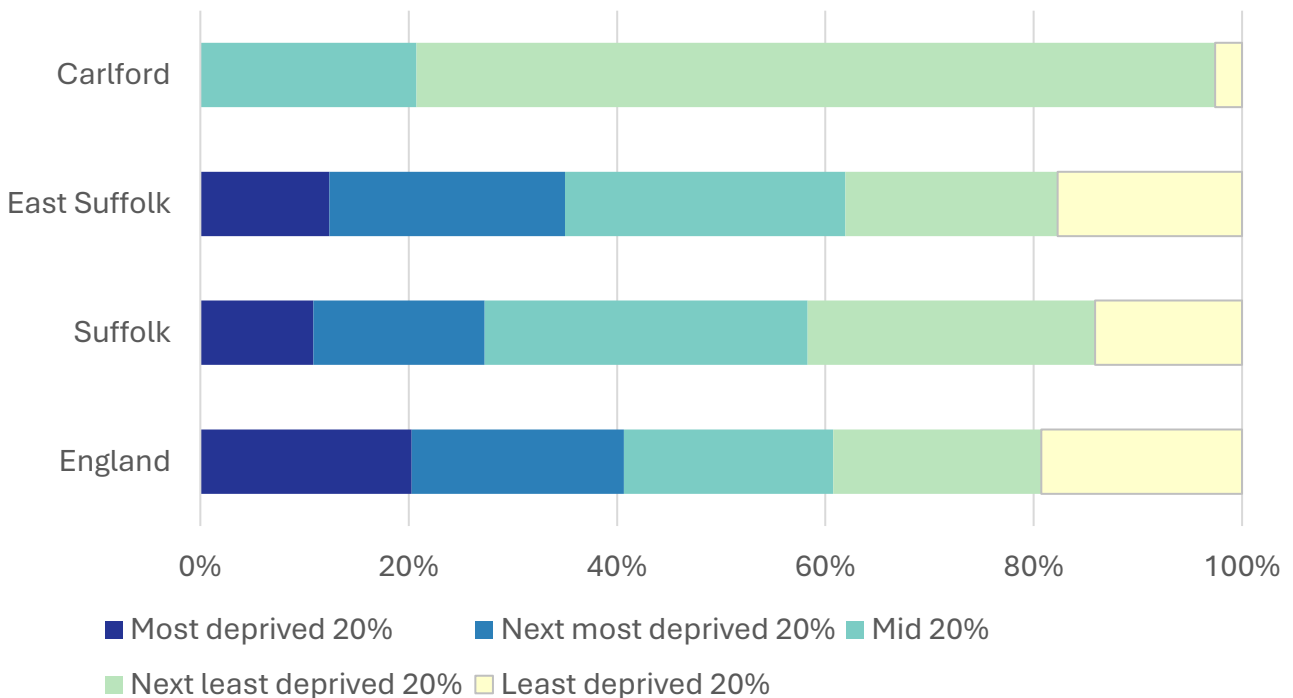
- In February 2026, 1% of 16–17-year-olds in Carlford were classified as NEET (not in education, employment or training).
- NEET levels fluctuate considerably according to the time of year and due to small numbers of 16-17-year-olds in the division, typically being at their lowest at the beginning of a new school year.
- In Carlford, NEET levels are consistently well below the district and county figures.

Index of Multiple Deprivation (IMD) 2025 (see map overleaf)

The IMD combines a number of indicators, chosen to cover a range of economic, social and housing issues, into a single deprivation score for each small area in England. This allows each area to be ranked relative to one another according to their level of deprivation. Small areas (Lower Super Output Areas, average population 1,700) are most commonly described as being in 1 of 5 quintile bands. The bottom quintile represents the 20% of areas that are the most deprived in England; these are shaded pale yellow on the map. The top quintile represents the least deprived areas in England and is shaded dark blue.

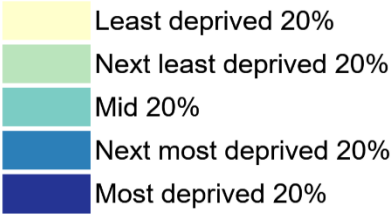
The Index is widely used to analyse patterns of deprivation, identify areas that would benefit from special initiatives or programmes and as a tool to determine eligibility for specific funding streams.

The chart below shows the percentage of the population of the division that live in areas ranked among each of the five quintiles of deprivation, alongside the district, county and England comparators.

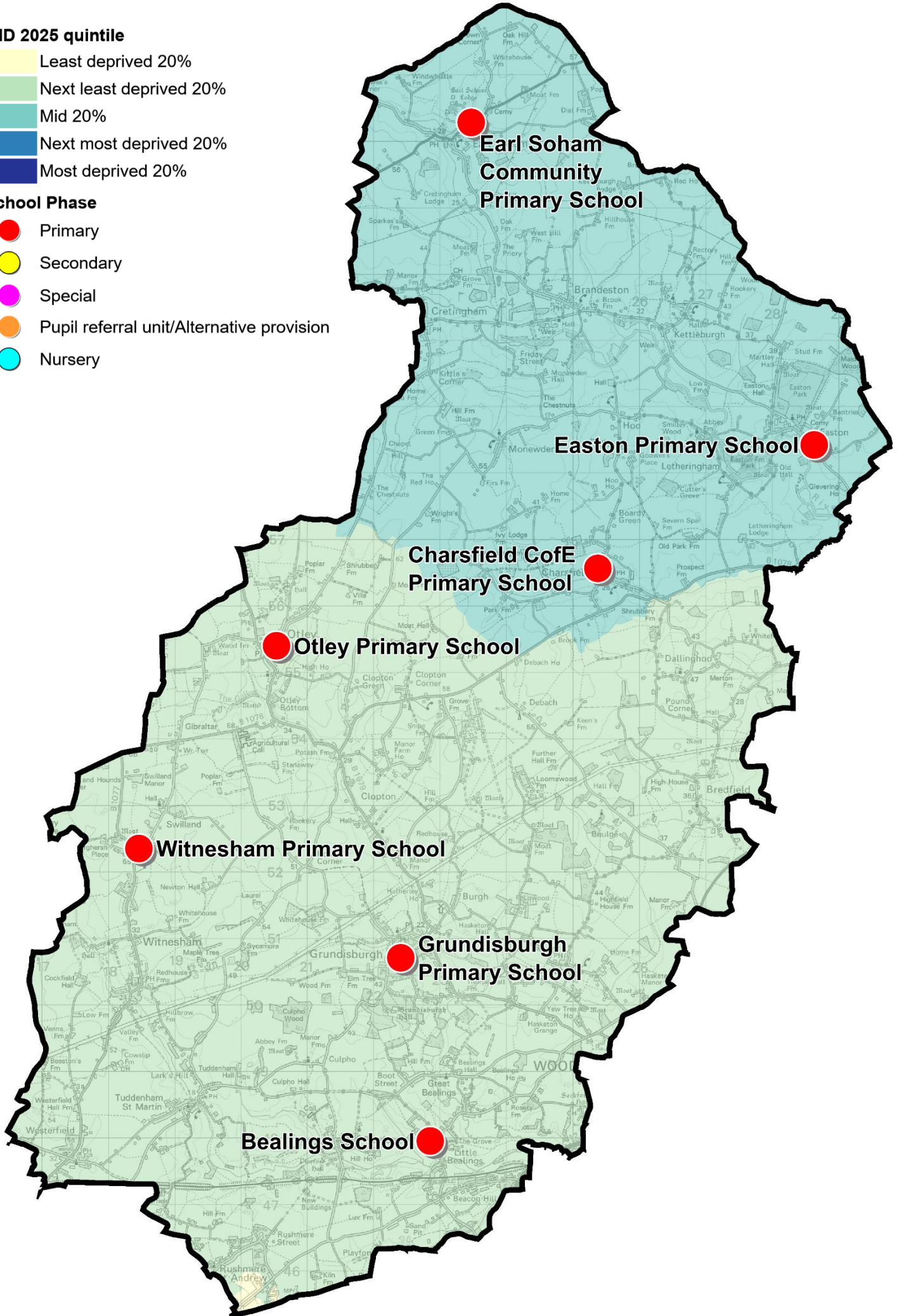
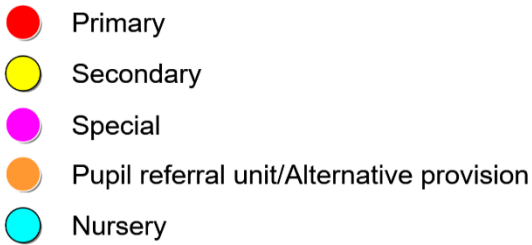


- The 2025 IMD shows that relative deprivation levels are low across most of Carlford.
- Almost 80% of the population of the division live in areas that are ranked in the least deprived 40% of areas in England; the majority being in the second least deprived quintile (i.e. 20-40% least deprived), with just a small part of the extreme south of the division ranked in the least deprived quintile.
- The northern part of Carlford, home to just over a fifth of the population of the division, is ranked in the middle quintile of deprivation.
- See the map overleaf for the distribution of IMD 2025 results across the division.

IMD 2025 quintile



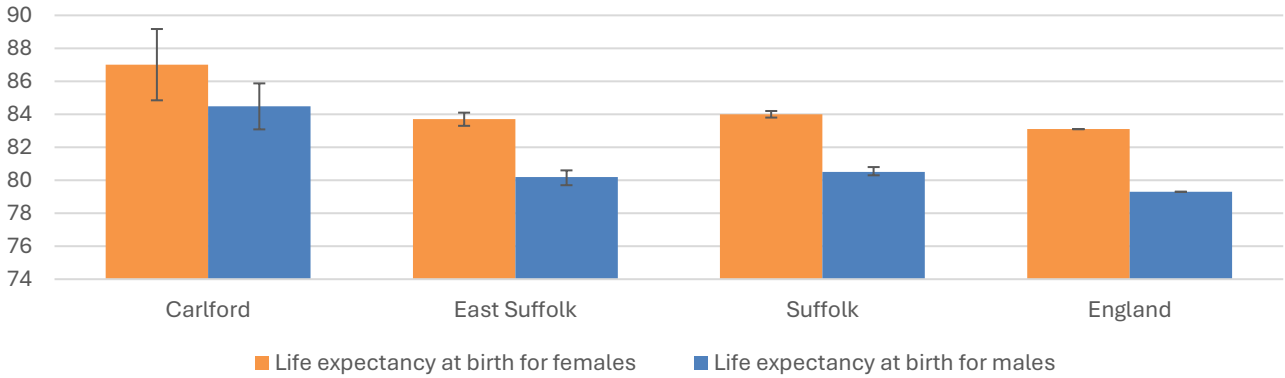
School Phase



Health

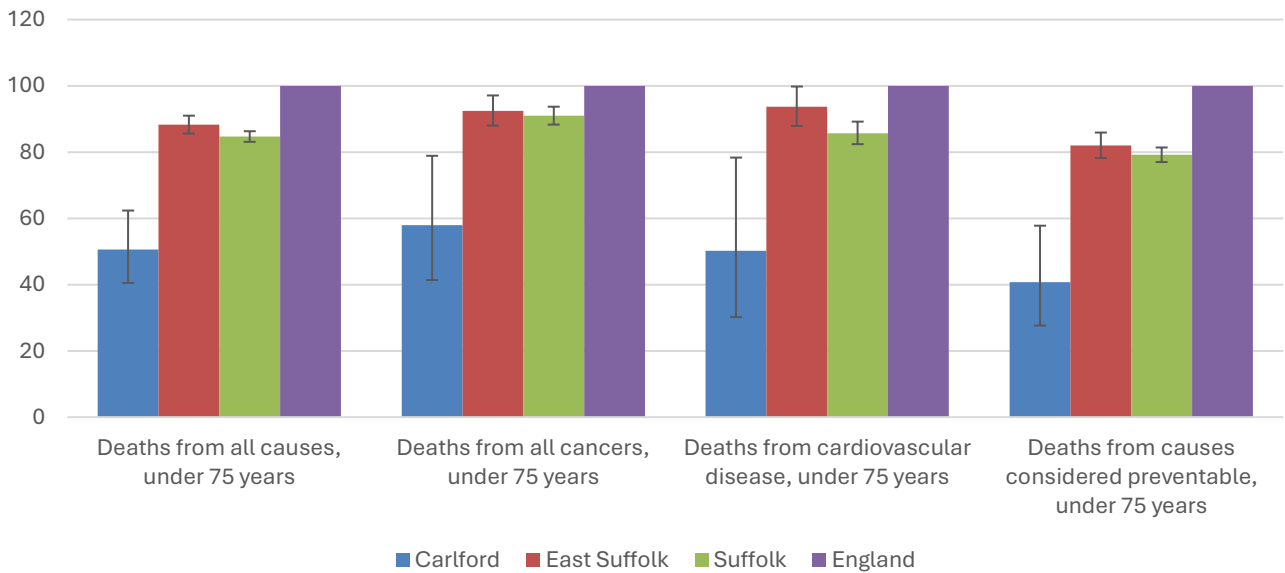
The local data used here is based on relatively small numbers. The confidence limits provide an indication of the reliability of the data. The 95% confidence intervals utilised on the chart provide a range within which there is 95% chance of the true result lying.

Life expectancy at birth



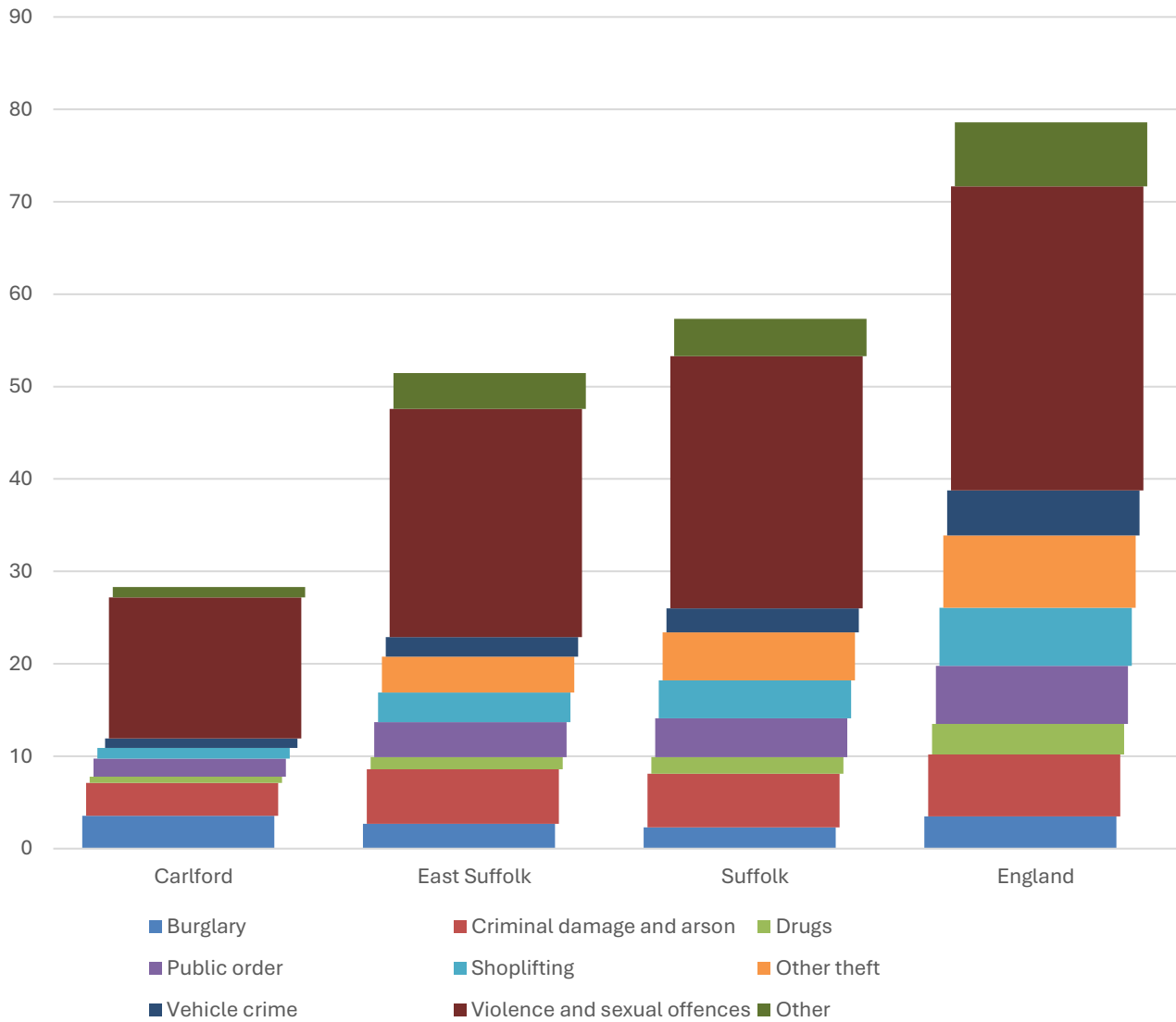
- Estimated life expectancy at birth for both females and males in Carlford is statistically significantly higher than the East Suffolk, Suffolk and England averages.
- The latest life expectancy at birth estimates for Carlford are 87 for females (the England average is 83.1), and 84.5 for males (compared to 79.3 nationally).

Deaths, under 75 years, standardised mortality ratio



- Estimated standardised mortality ratios for early deaths from all causes, all causes, cardiovascular disease, and causes considered preventable in Carlford are below 100, indicating that deaths in under 75s due to these causes are lower than in England.
- Confidence intervals around these estimates are wide for local data, but the estimates for Carlford for each of these measures are statistically significantly lower than those for East Suffolk, Suffolk county, and England.
- The standardised mortality ratio data shown here means that for every 100 early deaths from all causes across England as a whole, there are an estimated 51 comparable deaths in Carlford.

Crime & Community Safety



- Crime levels in Carlford are low compared to both the district and county averages, with 28 crimes per 1,000 residents in the division in the 12 months to the end of January 2026, compared to 51 in East Suffolk and 57 countywide.
- All types of crime occur at a lower rate in the division than the district and county average with the exception of burglaries. In Carlford, there were 3.6 burglaries during this period for every 1,000 residents, compared to 2.7 across East Suffolk, 2.3 in Suffolk and 3.5 nationally.
- By far the most common type of crime recorded during this period was violence and sexual offences, which accounted for more than half of all recorded crimes in the division.

Additional Information

Parishes in Division

Boulge

Brandeston

Bredfield

Burgh

Charsfield

Clopton

Cretingham

Culpho

Dallinghoo

Debach

Earl Soham

Easton

Great Bealings

Grundisburgh

Hasketon

Hoo

Kettleburgh

Letheringham

Little Bealings

Monewden

Otley

Playford

Swilland

Tuddenham St. Martin

Westerfield

Witnesham

Data sources

Category	Indicator	Source
Demographic Profile	Quinary population table 2024	ONS 2024 mid-year population estimates
	Population pyramid 2024	ONS 2024 mid-year population estimates
	Ethnicity 2021	ONS 2021 Census
Economy	Employment by broad industrial sector 2024	ONS Business Register and Employment Survey via NOMIS
Labour market	Claimant count: The number of people claiming Jobseeker's Allowance plus those who claim Universal Credit who are out of work (% 16-64 population) January 2021-February 2026	DWP via NOMIS
Education	School information and attainment 2023-2025	Suffolk County Council CYP iHub
	% 16-17-year-olds NEET (Not in Employment, Education or Training) March 2021 to February 2026	Suffolk County Council CYP iHub via the Suffolk Observatory
Deprivation	Index of Multiple Deprivation 2025	Ministry of Housing, Communities and Local Government
Health	Life expectancy at birth 2016-2020 (2018-2020 for comparator areas)	Office for Health Improvement and Disparities
Health	Standardised mortality ratio for deaths from all causes, cancer, cardiovascular disease, and from causes considered preventable (under 75 years), 2016-2020 (2019-2023 for comparator areas). The standardised mortality ratio is the ratio of observed deaths in the study group to expected deaths in the general population	Office for Health Improvement and Disparities
Community Safety	Recorded crime rate per 1,000 resident population February 2025 to January 2026	Data.police.uk via the Suffolk Observatory

For more data and information about Carlford Electoral Division, see the Suffolk Observatory www.suffolkobservatory.info

