

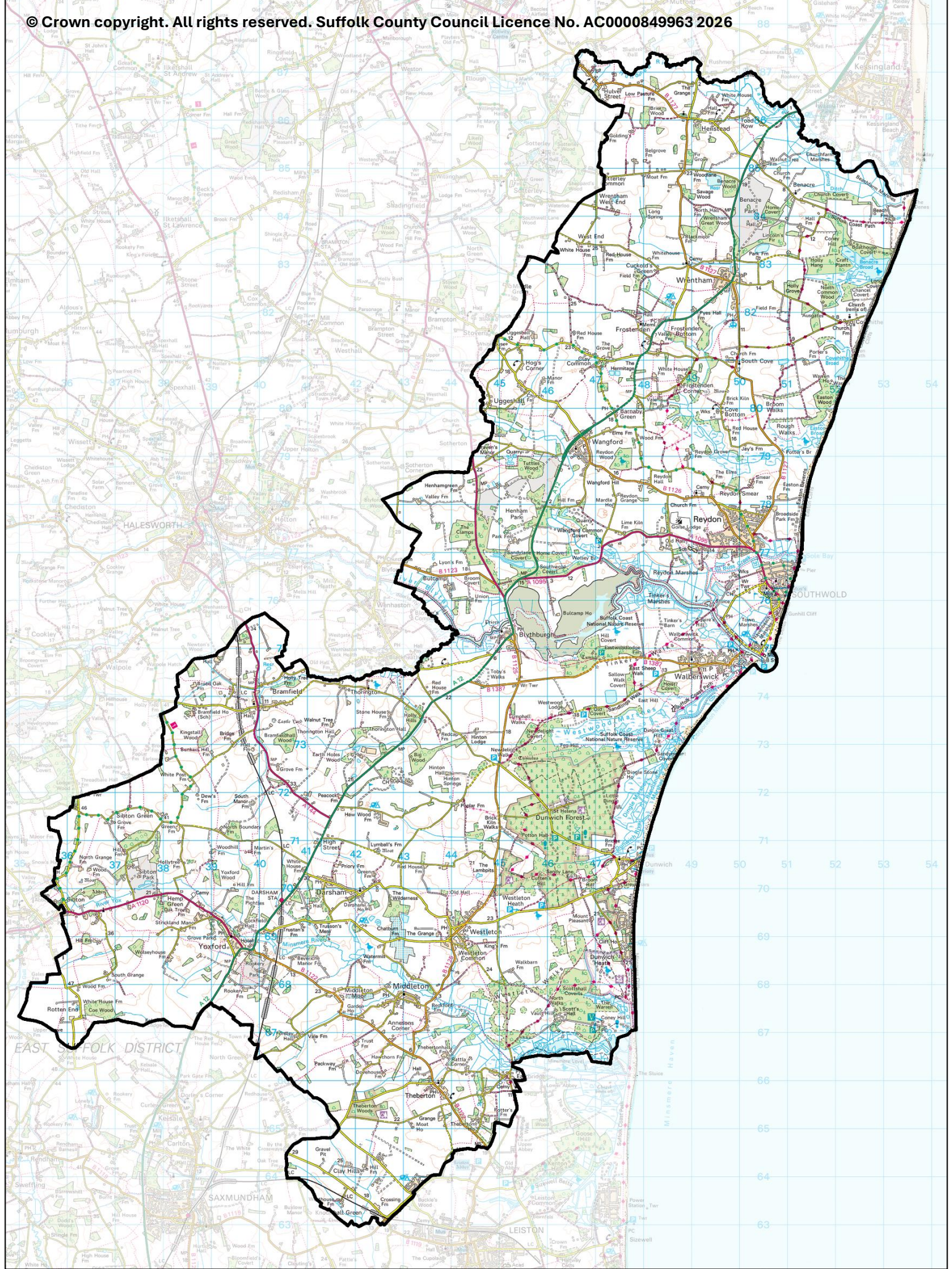
Blyth Estuary

County Electoral Division profile

May 2026

This division comprises Southwold Ward in its entirety, and parts of Aldeburgh & Leiston, Kelsale & Yoxford, and Wrentham, Wangford & Westleton Wards





Contents

- Demographic Profile: Age & Ethnicity
- Economy and Labour Market
- Schools & NEET
- Index of Multiple Deprivation
- Health
- Crime & Community Safety
- Additional Information
- Data Sources

Electoral Division Profiles: an introduction

These profiles have been produced to support elected members, constituents and other interested parties in understanding the demographic, economic, social and educational profile of their neighbourhoods. We have used the latest data available at the time of publication.

Much more data is available from national and local sources than is captured here, but it is hoped that the profile will be a useful starting point for discussion, where local knowledge and experience can be used to flesh out and illuminate the information presented here.

The profile can be used to help look at some fundamental questions e.g.

- Does the age profile of the population match or differ from the national profile?
- Is there evidence of the ageing profile of the county in all the wards in the Division or just some?
- How diverse is the community in terms of ethnicity?
- What is the impact of deprivation on families and residents?
- Does there seem to be a link between deprivation and school performance?
- What is the breakdown of employment sectors in the area?
- Is it a relatively healthy area compared to the rest of the district or county?
- What sort of crime is prevalent in the community?

A vast amount of additional data is available on the **Suffolk Observatory**

www.suffolkobservatory.info

The Suffolk Observatory is a free online resource that contains all Suffolk's vital statistics; it is the one-stop-shop for information and intelligence about Suffolk. Through data, reports and maps, the Suffolk Observatory provides a comprehensive picture of the County. It is a great source for useful facts and figures that can be used for writing reports and presentations, informing strategic and business planning, preparing funding applications or supporting academic research. Data is presented around the key themes of population, children and young people, health and social care, housing, crime and community safety, deprivation, economy and employment and environment. All areas of the county are covered, right down to district, electoral division, ward and parish level, with information easily accessible in a variety of formats. You can also build your own reports for custom areas.

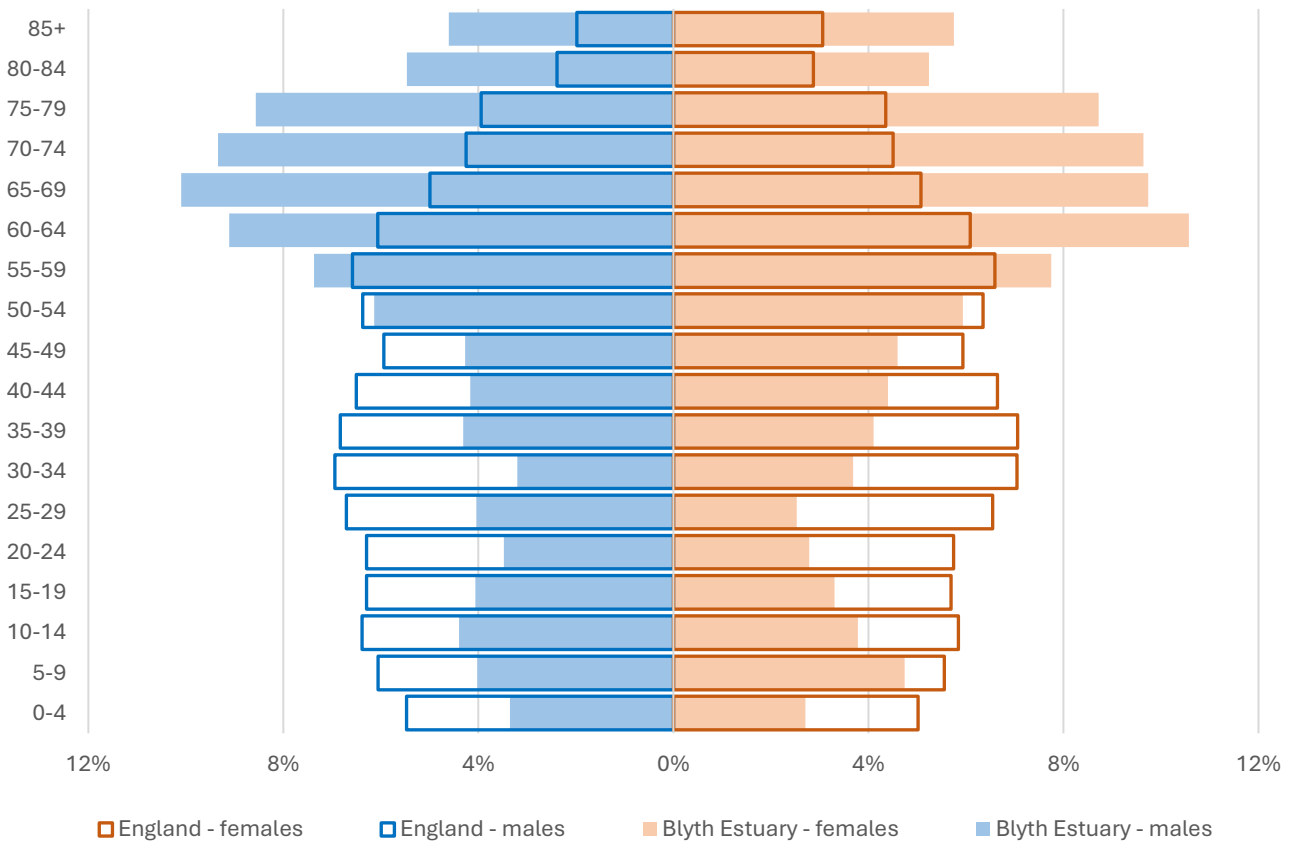
Technical Notes:

1. Where electoral divisions do not exactly match the boundaries at which the data is available (e.g. ward, Output Area or Lower Super Output Area), we have adopted a "best-fit" approach to produce a dataset.
2. District, county and national level data is provided where possible to provide a context for comparisons.

Demographic Profile - Age

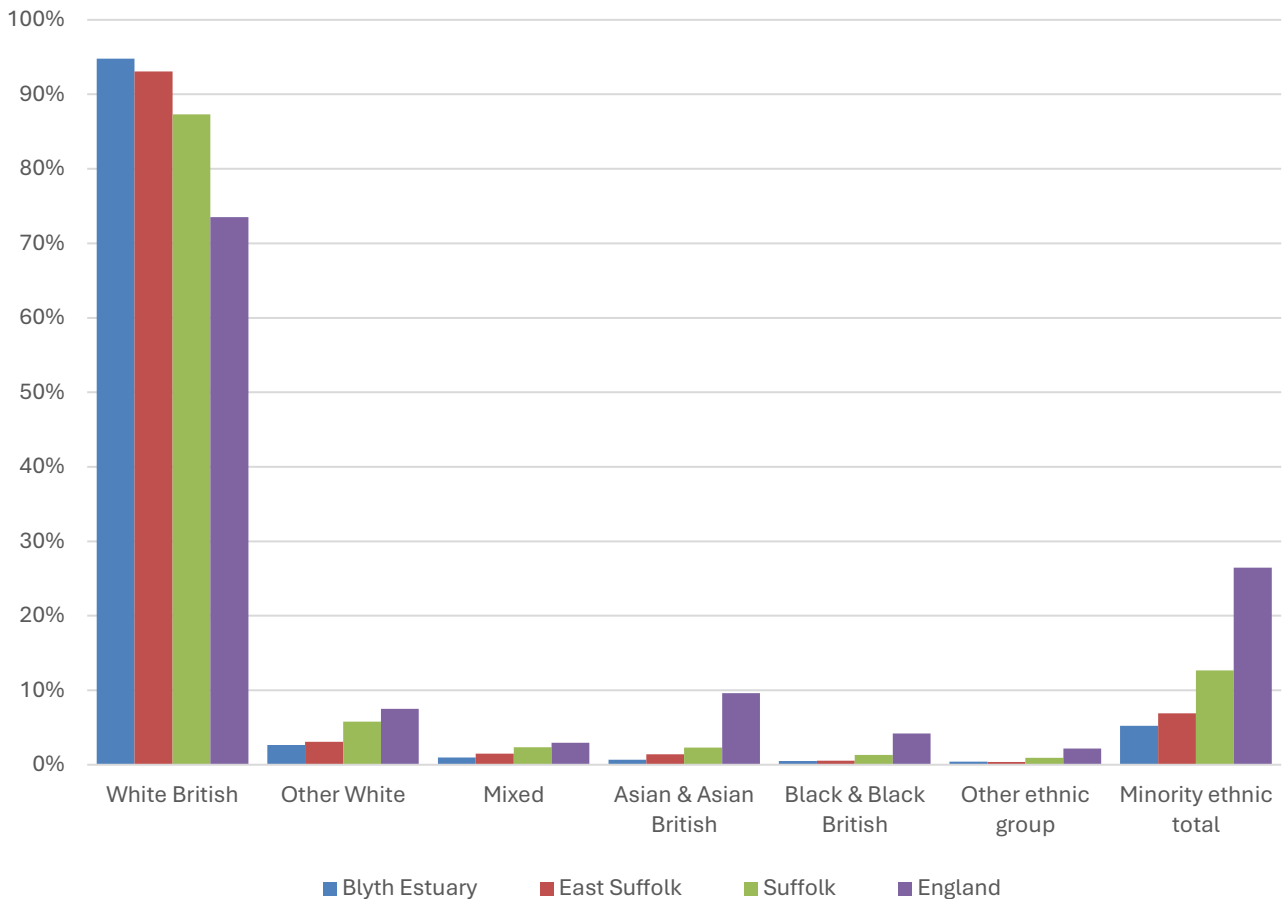
In mid-2024, the estimated population of Blyth Estuary stood at 9,796, an increase of 1.6% over the past decade. The age structure of the component wards and the division as a whole is set out below.

	Blyth Estuary Division	Wrentham, Wangford & Westleton Ward	Southwold Ward	Kelsale & Yoxford Ward	Aldeburgh & Leiston Ward
All Ages	9,796	4,253	3,856	990	697
0-4	296	150	105	31	10
5-9	430	207	164	42	17
10-14	400	157	180	48	15
15-19	360	156	140	36	28
20-24	306	148	104	34	20
25-29	320	153	107	37	23
30-34	338	153	131	34	20
35-39	412	203	136	54	19
40-44	420	188	162	54	16
45-49	435	202	163	52	18
50-54	591	305	179	66	41
55-59	741	327	273	77	64
60-64	966	429	346	107	84
65-69	971	440	368	94	69
70-74	930	354	400	89	87
75-79	847	338	361	68	80
80-84	524	191	249	43	41
85+	509	152	288	24	45



- The age pyramid for Blyth Estuary division shows a considerably higher proportion of people aged 55 and over than in England as a whole.
- The most common age group in the division is 65-69-year-olds (9.91% of the local population), followed by 60-64-year-olds (9.86%), and 70-74-year-olds (9.49%).
- Approaching two-fifths (38.6%) of the population of Blyth Estuary is of retirement age.
- There is a lower-than-average proportion of people in all age bands under 55, but particularly in the 20 to 40 age group.

Demographic Profile - Ethnicity

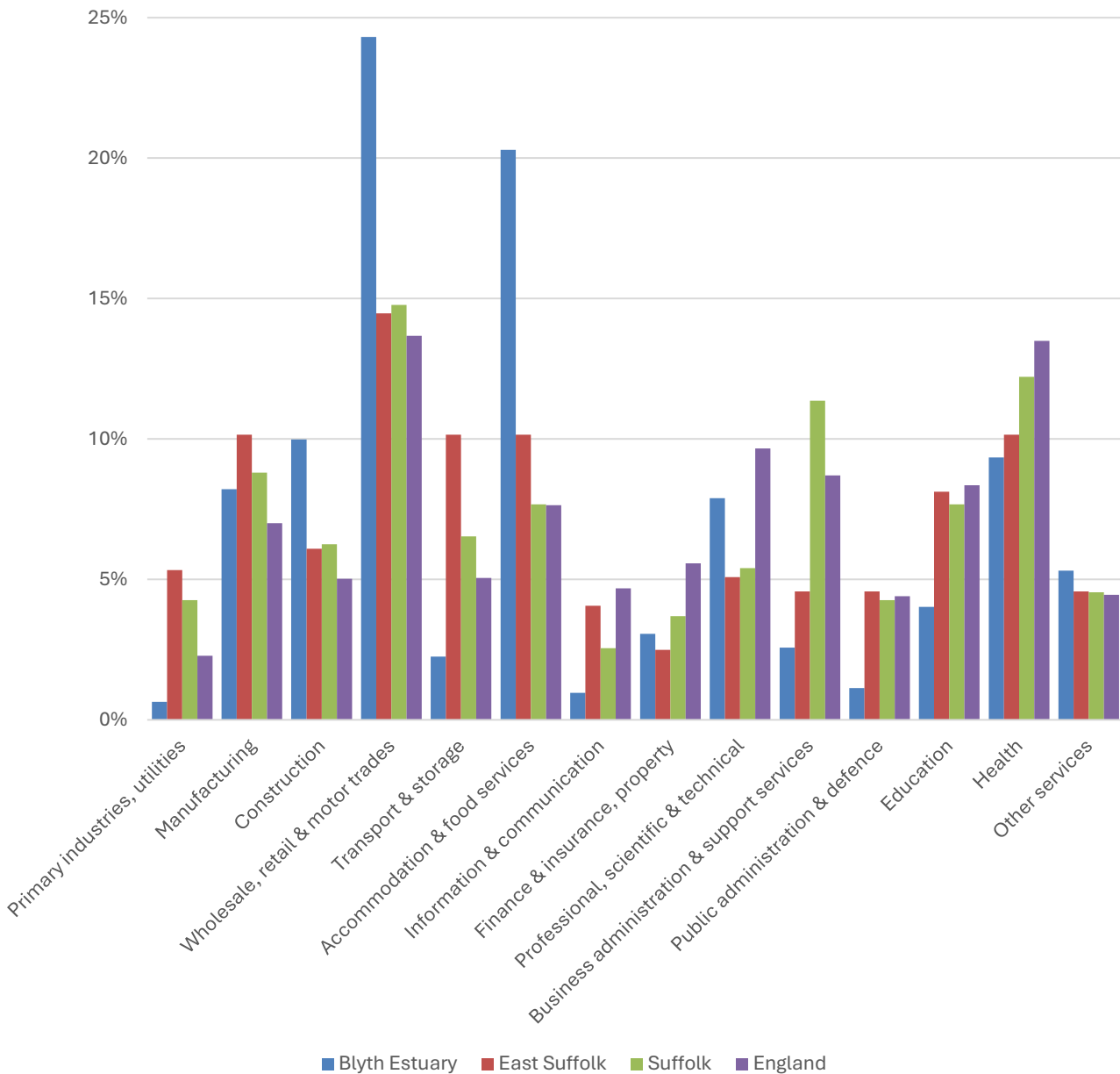


- According to the latest data (2021 Census), 94.8% of the population of Blyth Estuary are White British.
- There are 506 (5.2%) people of minority ethnic origin in the division, less than the proportion in Suffolk as a whole and around a fifth of the England average.
- Blyth Estuary has a broadly similar ethnic diversity profile to East Suffolk district, and lower proportions of all minority ethnic groups than Suffolk as a whole.

	All people		White British		Other White		Mixed		Asian and Asian British		Black and Black British		Other Ethnic Group		Total minority ethnic population	
	Count	%	Count	%	Count	%	Count	%	Count	%	Count	%	Count	%	Count	%
Blyth Estuary	9,685		9,179	94.8	257	2.7	94	1.0	67	0.7	49	0.5	39	0.4	506	5.2
East Suffolk	246,060		229,063	93.1	7,564	3.1	3,707	1.5	3,447	1.4	1,357	0.6	922	0.4	16,997	6.9
Suffolk	760,687		664,205	87.3	44,066	5.8	17,807	2.3	17,483	2.3	10,168	1.3	6,958	0.9	96,482	12.7
England				73.5		7.5		3.0		9.6		4.2		2.2		26.5

Economy

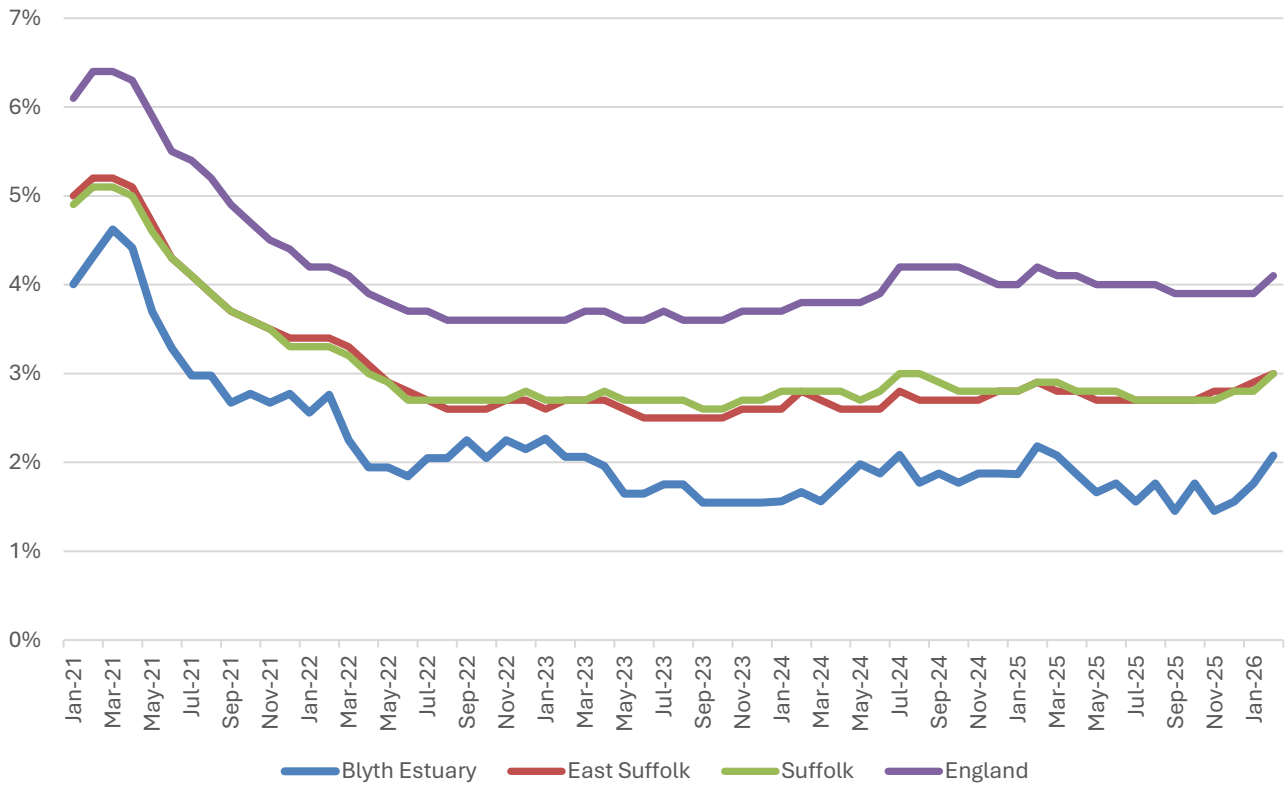
There are around 3,100 people employed in Blyth Estuary.



- Wholesale, retail and motor trades and accommodation and food services are the two biggest sectors in Blyth Estuary division in terms of employment.
- Combined, these two sectors account for nearly 45% of jobs in the division; a much larger proportion than across the comparator areas of East Suffolk, Suffolk county, and England.
- Construction is also important locally, providing a further 10% of jobs in the division.
- Manufacturing (8%), health (9%), and professional, scientific and technical activities (8%) also make up significant proportions of employment in Blyth Estuary.

Labour Market

Out-of-work benefit claimant rate



- In common with East Suffolk, Suffolk and England as a whole, Blyth Estuary saw a steady decline in the proportion of the working age population claiming of out-of-work benefits during 2021 following a peak during the COVID-19 pandemic.
- Since then, the claimant rate in the division has been stable at between 1.5% and just over 2%.
- The claimant rate in Blyth Estuary is consistently below the district, county and below the national benchmarks.

Schools

School Information

Schools in the Division

Name	Phase	Academy Status	No. pupils	Average cohort size at:			
				Foundation Stage (age 4-7)	KS2 (age 7-11)	KS4 (age 14-16)	KS5 (age 16-18)
Bramfield CofE Primary School	Primary	AS	103	14	12		
Middleton Community Primary School	Primary	AC	16	3	4		
Reydon Primary School	Primary	AS	168	25	27		
Southwold Primary School	Primary	AS	60	7	9		
Yoxford & Peasenhall Primary Academy	Primary	AS	88	13	11		

Academy Status key: AS = Academy Sponsored, AC = Academy Converter, LA = LA Maintained, F = Free

Ofsted information

Name	Overall effectiveness	Effectiveness of leadership and management	Behaviour and attitudes	Personal development	Early years provision (if applicable)	Quality of education	Last inspection date
Bramfield CofE Primary School	2	2	9	9	2	9	18/06/2019
Middleton Community Primary School	2	2	2	2	0	2	17/12/2019
Reydon Primary School	2	2	2	2	2	2	28/02/2024
Southwold Primary School	5	2	2	2	2	2	01/10/2024
Yoxford & Peasenhall Primary Academy	2	2	2	2	2	2	11/09/2019

Code	Judgement	Code	Judgement
0	Insufficient evidence	SM	Special measures
1	Outstanding	8	Does not apply
2	Good	9	No judgement
3	Requires improvement	Null	No data available
4	Inadequate	Not judged	Not judged
SWK	Serious weaknesses	5	No overall grade

School Attainment

Foundation Stage Profile (reception)

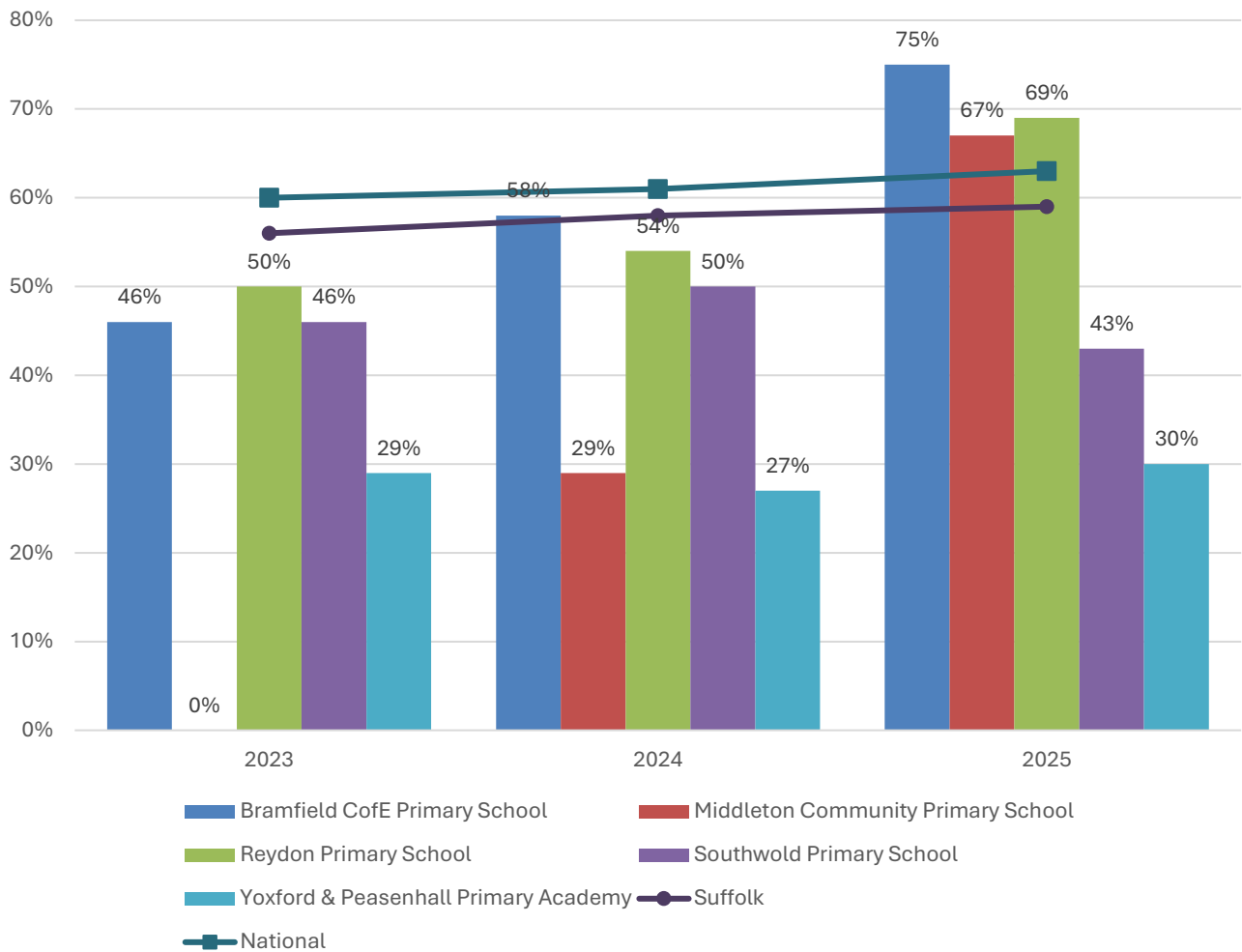
% pupils achieving Good Level of Development (GLD)



- Foundation Stage attainment at schools in Blyth Estuary has been quite inconsistent over the past three years.
- At no school was the percentage of pupils achieving a Good Level of Development (GLD) consistently above the county and national average in each of the latest three years.
- Yoxford and Peasenhall Primary Academy saw above average attainment in 2023 and 2024, before it fell to 42% in 2025. The national figure that year was 68%.
- It should be noted that cohort sizes at some of these schools are small and therefore more subject to significant fluctuations from one year to the next.

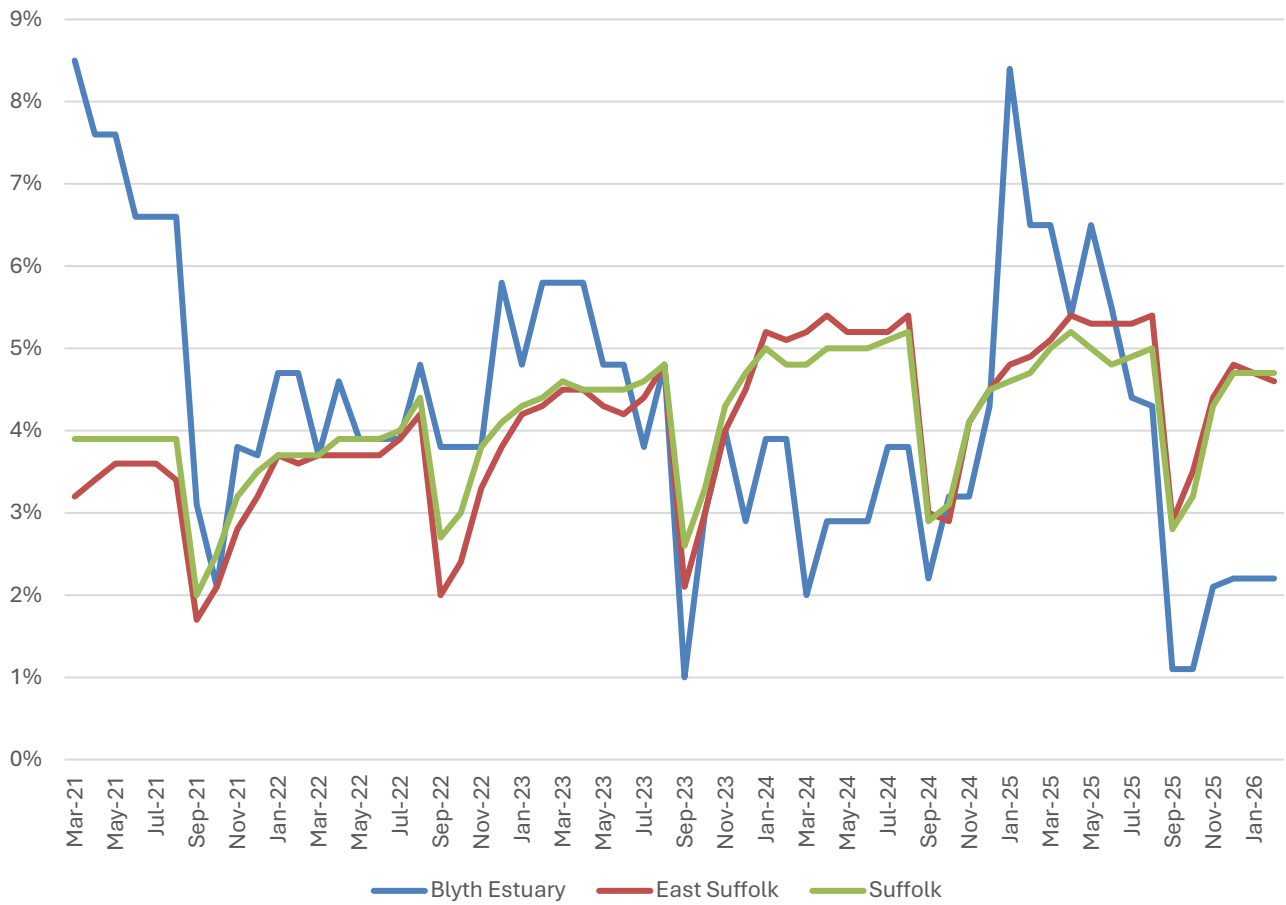
Key Stage 2 (age 11)

% pupils achieving the Expected Level or better in Reading, Writing and Mathematics



- Key stage 2 attainment at schools in Blyth Estuary has improved over the last three years.
- The percentage of pupils who achieved the expected level or better in reading, writing and mathematics was below the national average at every school in the division in 2023 and 2024.
- However, in 2025, Bramfield Church of England Primary, Middleton Community Primary and Reydon Primary Schools all recorded KS2 attainment levels above the county and national averages.

NEET % (Not in Education, Employment or Training)



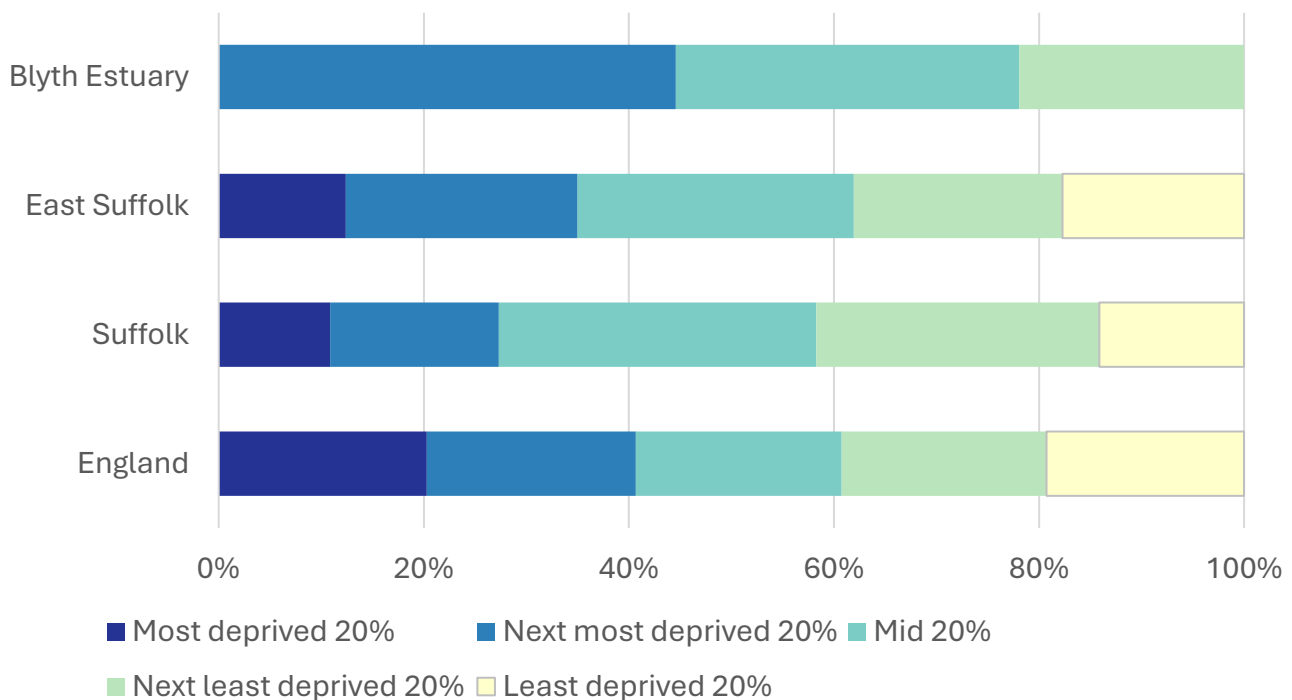
- In February 2026, 4.4% of 16–17-year-olds in Blyth Estuary were classified as NEET (not in education, employment or training).
- NEET levels fluctuate considerably according to the time of year and due to small numbers of 16-17-year-olds in the division, typically being at their lowest at the beginning of a new school year.
- In Blyth Estuary, NEET levels are often above the district and county levels away from the beginning of a new school year, but were below average for much of 2024 and in the most recent months of data.

Index of Multiple Deprivation (IMD) 2025 (see map overleaf)

The IMD combines a number of indicators, chosen to cover a range of economic, social and housing issues, into a single deprivation score for each small area in England. This allows each area to be ranked relative to one another according to their level of deprivation. Small areas (Lower Super Output Areas, average population 1,700) are most commonly described as being in 1 of 5 quintile bands. The bottom quintile represents the 20% of areas that are the most deprived in England; these are shaded pale yellow on the map. The top quintile represents the least deprived areas in England and is shaded dark blue.

The Index is widely used to analyse patterns of deprivation, identify areas that would benefit from special initiatives or programmes and as a tool to determine eligibility for specific funding streams.

The chart below shows the percentage of the population of the division that live in areas ranked among each of the five quintiles of deprivation, alongside the district, county and England comparators.



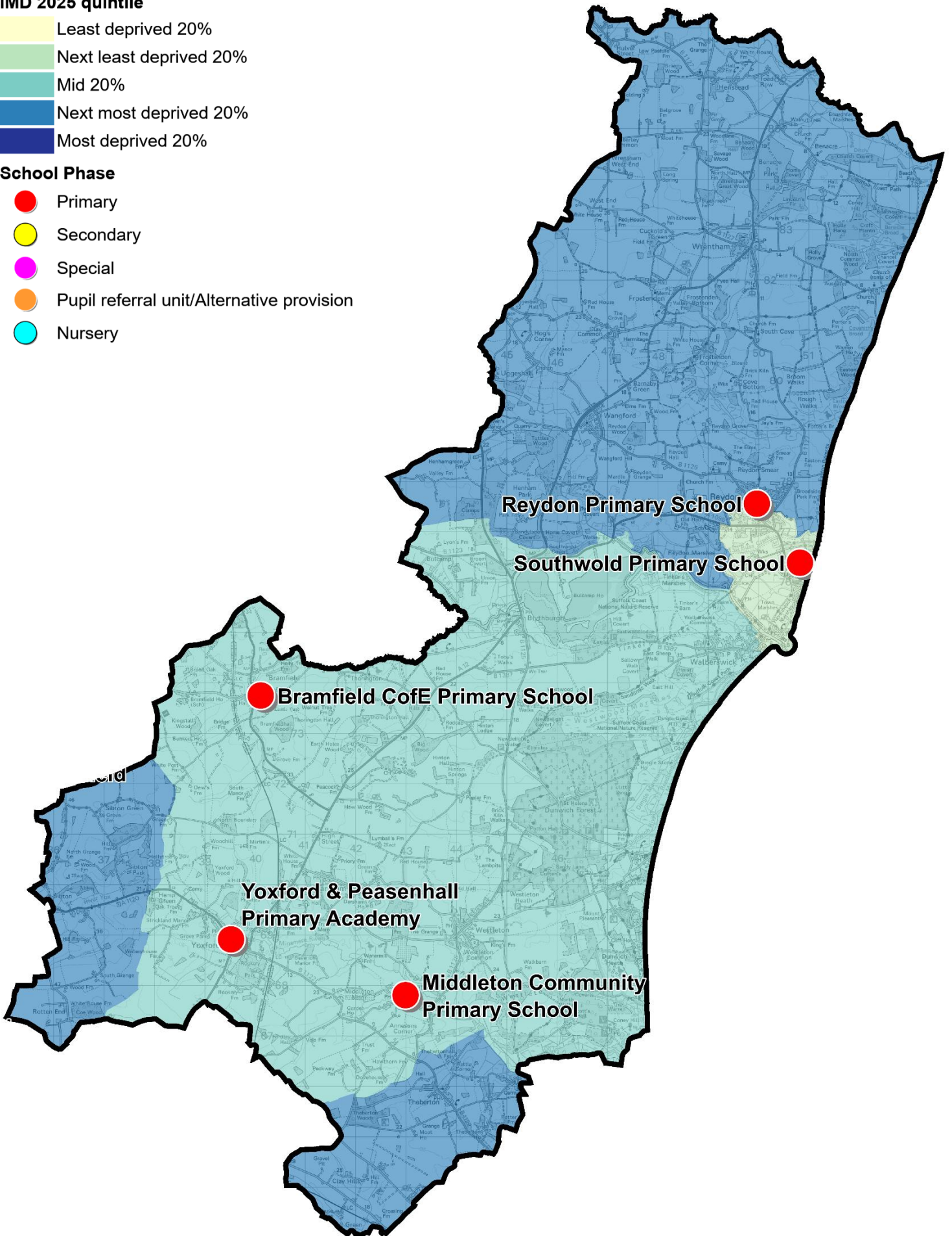
- The 2025 IMD shows that deprivation levels in Blyth Estuary are quite varied, with parts of the division in each of the three middle deprivation quintiles.
- Just under half (45%) of the population of the division live in areas that are ranked in the second most deprived quintile (i.e. 20-40% most deprived) in England.
- Around a fifth of Blyth Estuary's population lives in areas in the second least deprived quintile, with the remaining 34% in the middle quintile.
- No part of the division is ranked in either the most or least deprived quintile.
- See the map overleaf for the distribution of IMD 2025 results across the division.

IMD 2025 quintile

- Least deprived 20%
- Next least deprived 20%
- Mid 20%
- Next most deprived 20%
- Most deprived 20%

School Phase

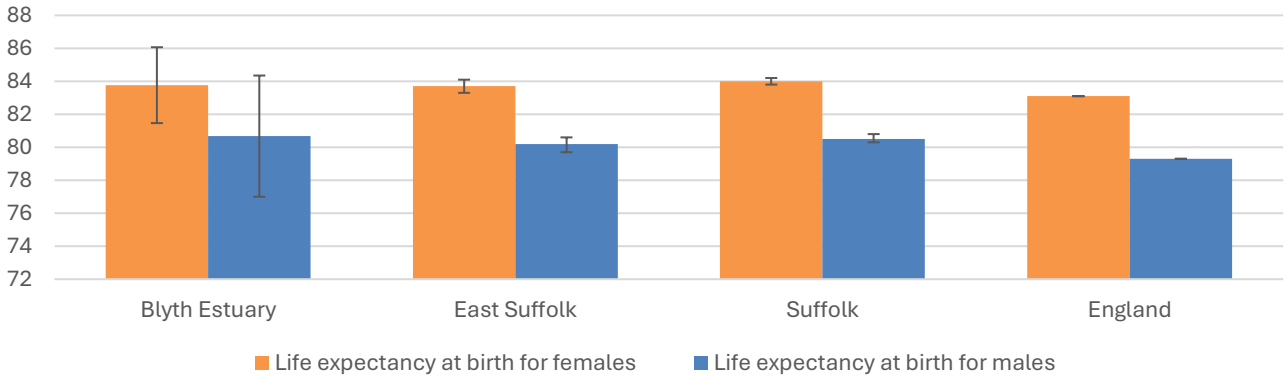
- Primary
- Secondary
- Special
- Pupil referral unit/Alternative provision
- Nursery



Health

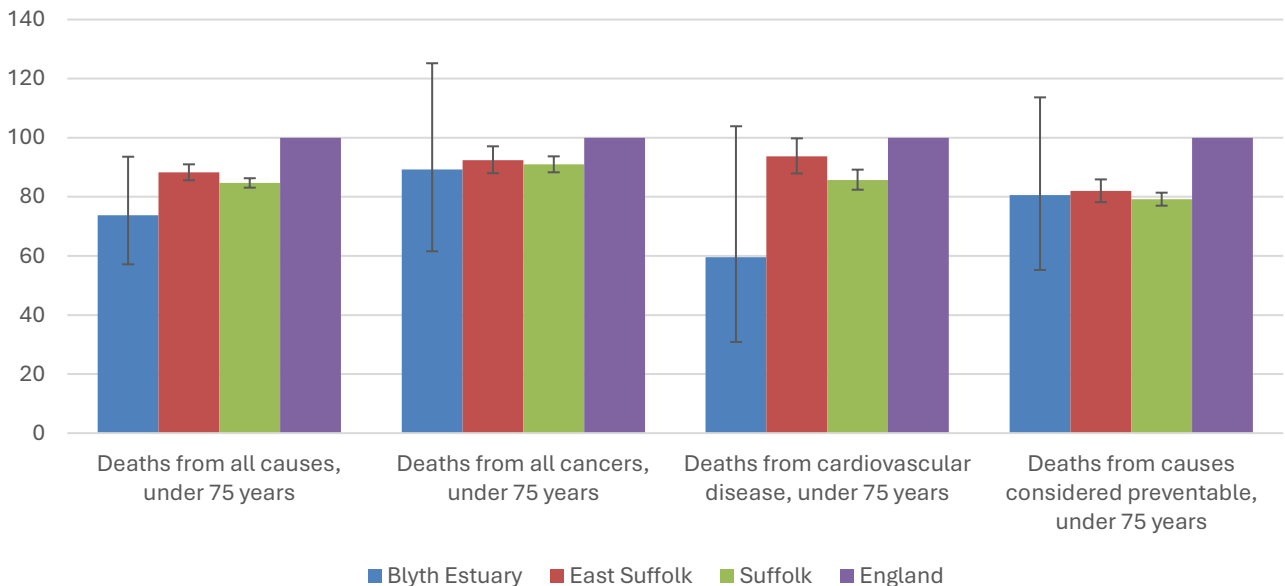
The local data used here is based on relatively small numbers. The confidence limits provide an indication of the reliability of the data. The 95% confidence intervals utilised on the chart provide a range within which there is 95% chance of the true result lying.

Life expectancy at birth



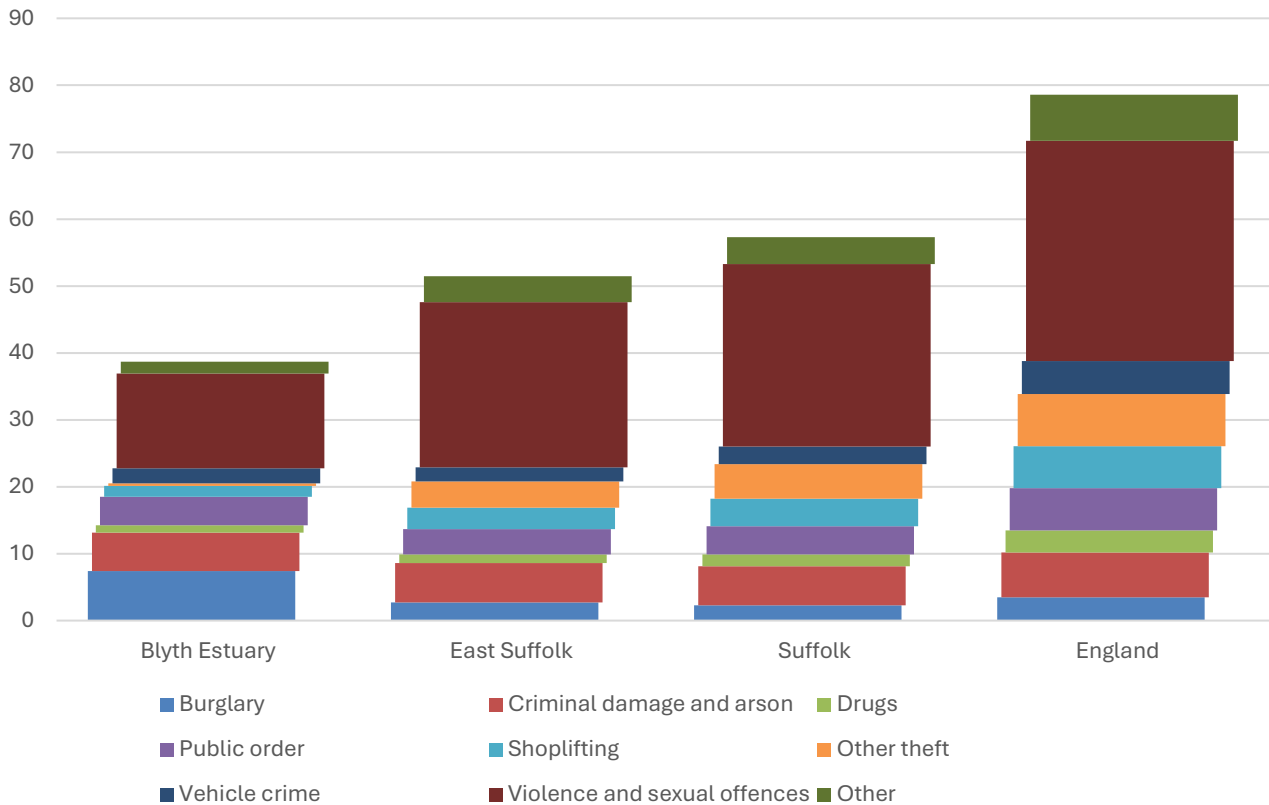
- Estimated life expectancy at birth for both females and males in Blyth Estuary is statistically similar to the East Suffolk, Suffolk and England averages.
- Current life expectancy at birth in the division is 83.8 for females (the England average is 83.1), and 80.1 for males (compared to 79.3 nationally).

Deaths, under 75 years, standardised mortality ratio



- Estimated standardised mortality ratios for early deaths from all causes, all cancers, cardiovascular disease and causes considered preventable in Blyth Estuary are below 100, indicating that deaths in under 75s due to these causes are lower than in England.
- Confidence intervals around these estimates are wide for local data, and only the SMR for deaths from all causes is statistically significantly lower than England.
- The standardised mortality ratio data shown here means that for every 100 early deaths from all causes across England as a whole, there are an estimated 74 comparable deaths in Blyth Estuary.

Crime & Community Safety



- Crime levels in Blyth Estuary are low compared to both the district and county averages, with around 39 crimes per 1,000 residents in the division in the 12 months to the end of January 2026, compared to 52 in East Suffolk and 57 countywide.
- Most types of crime occur at a lower rate in the division than the district and county average, but there is a high rate of burglaries in the area, with 7.2 per 1,000 population in Blyth Estuary compared to 2.7 in East Suffolk and 3.5 nationally.
- The most common type of crime recorded during this period was violence and sexual offences, which accounted for more than a third of all recorded crimes in the division, but which occur at a much lower rate than in the comparator areas.

Additional Information

Parishes in Division

- | | |
|-----------------------------|----------------------|
| Benacre | South Cove |
| Blythburgh | Southwold |
| Bramfield | Theberton |
| Covehithe | Thorington |
| Darsham | Uggeshall |
| Dunwich | Walberswick |
| Frostenden | Wangford with Henham |
| Henstead with Hulver Street | Westleton |
| Middleton | Wrentham |
| Reydon | Yoxford |
| Sibton | |

Data sources

Category	Indicator	Source
Demographic Profile	Quinary population table 2024	ONS 2024 mid-year population estimates
	Population pyramid 2024	ONS 2024 mid-year population estimates
	Ethnicity 2021	ONS 2021 Census
Economy	Employment by broad industrial sector 2024	ONS Business Register and Employment Survey via NOMIS
Labour market	Claimant count: The number of people claiming Jobseeker's Allowance plus those who claim Universal Credit who are out of work (% 16-64 population) January 2021-February 2026	DWP via NOMIS
Education	School information and attainment 2023-2025	Suffolk County Council CYP iHub
	% 16-17-year-olds NEET (Not in Employment, Education or Training) March 2021 to February 2026	Suffolk County Council CYP iHub via the Suffolk Observatory
Deprivation	Index of Multiple Deprivation 2025	Ministry of Housing, Communities and Local Government
Health	Life expectancy at birth 2016-2020 (2018-2020 for comparator areas)	Office for Health Improvement and Disparities
Health	Standardised mortality ratio for deaths from all causes, cancer, cardiovascular disease, and from causes considered preventable (under 75 years), 2016-2020 (2019-2023 for comparator areas). The standardised mortality ratio is the ratio of observed deaths in the study group to expected deaths in the general population	Office for Health Improvement and Disparities
Community Safety	Recorded crime rate per 1,000 resident population February 2025 to January 2026	Data.police.uk via the Suffolk Observatory

For more data and information about Blyth Estuary Electoral Division, see the Suffolk Observatory www.suffolkobservatory.info

