

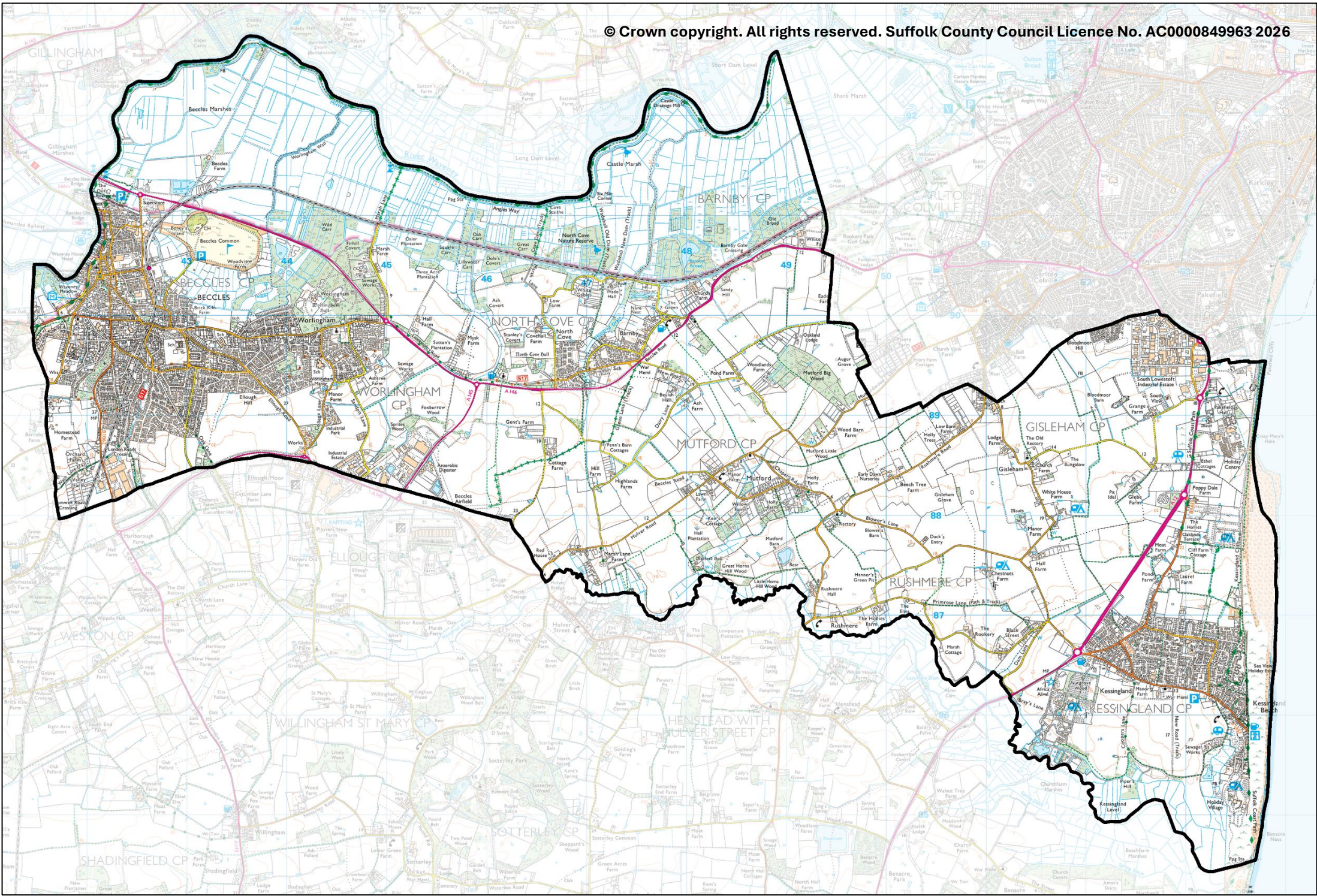
Beccles & Kessingland

County Electoral Division profile

May 2026

This division comprises Beccles & Worlingham and Kessingland Wards in their entirety, and parts of Carlton Colville, and Wrentham, Wangford & Westleton Wards





Contents

- Demographic Profile: Age & Ethnicity
- Economy and Labour Market
- Schools & NEET
- Index of Multiple Deprivation
- Health
- Crime & Community Safety
- Additional Information
- Data Sources

Electoral Division Profiles: an introduction

These profiles have been produced to support elected members, constituents and other interested parties in understanding the demographic, economic, social and educational profile of their neighbourhoods. We have used the latest data available at the time of publication.

Much more data is available from national and local sources than is captured here, but it is hoped that the profile will be a useful starting point for discussion, where local knowledge and experience can be used to flesh out and illuminate the information presented here.

The profile can be used to help look at some fundamental questions e.g.

- Does the age profile of the population match or differ from the national profile?
- Is there evidence of the ageing profile of the county in all the wards in the Division or just some?
- How diverse is the community in terms of ethnicity?
- What is the impact of deprivation on families and residents?
- Does there seem to be a link between deprivation and school performance?
- What is the breakdown of employment sectors in the area?
- Is it a relatively healthy area compared to the rest of the district or county?
- What sort of crime is prevalent in the community?

A vast amount of additional data is available on the **Suffolk Observatory**

www.suffolkobservatory.info

The Suffolk Observatory is a free online resource that contains all Suffolk's vital statistics; it is the one-stop-shop for information and intelligence about Suffolk. Through data, reports and maps, the Suffolk Observatory provides a comprehensive picture of the County. It is a great source for useful facts and figures that can be used for writing reports and presentations, informing strategic and business planning, preparing funding applications or supporting academic research. Data is presented around the key themes of population, children and young people, health and social care, housing, crime and community safety, deprivation, economy and employment and environment. All areas of the county are covered, right down to district, electoral division, ward and parish level, with information easily accessible in a variety of formats. You can also build your own reports for custom areas.

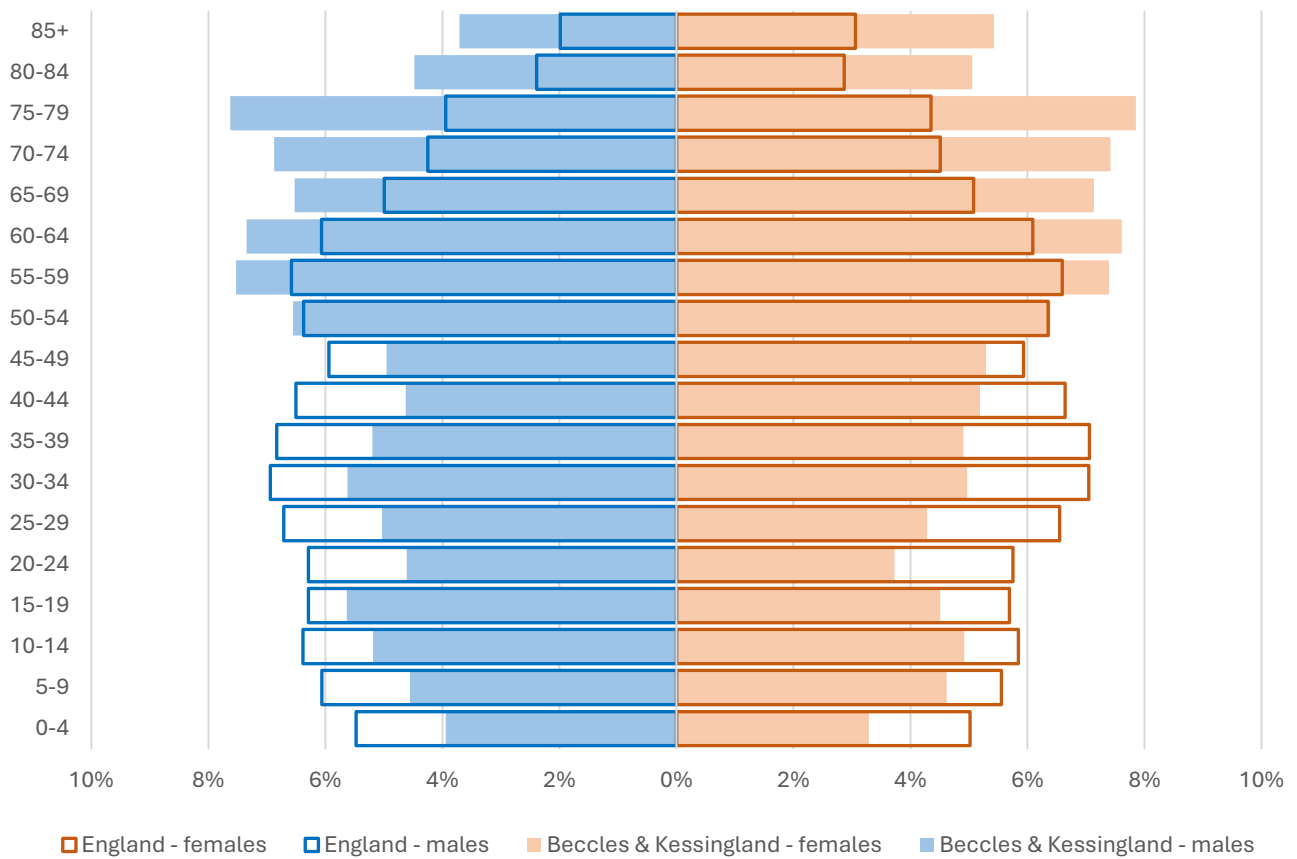
Technical Notes:

1. Where electoral divisions do not exactly match the boundaries at which the data is available (e.g. ward, Output Area or Lower Super Output Area), we have adopted a "best-fit" approach to produce a dataset.
2. District, county and national level data is provided where possible to provide a context for comparisons.

Demographic Profile - Age

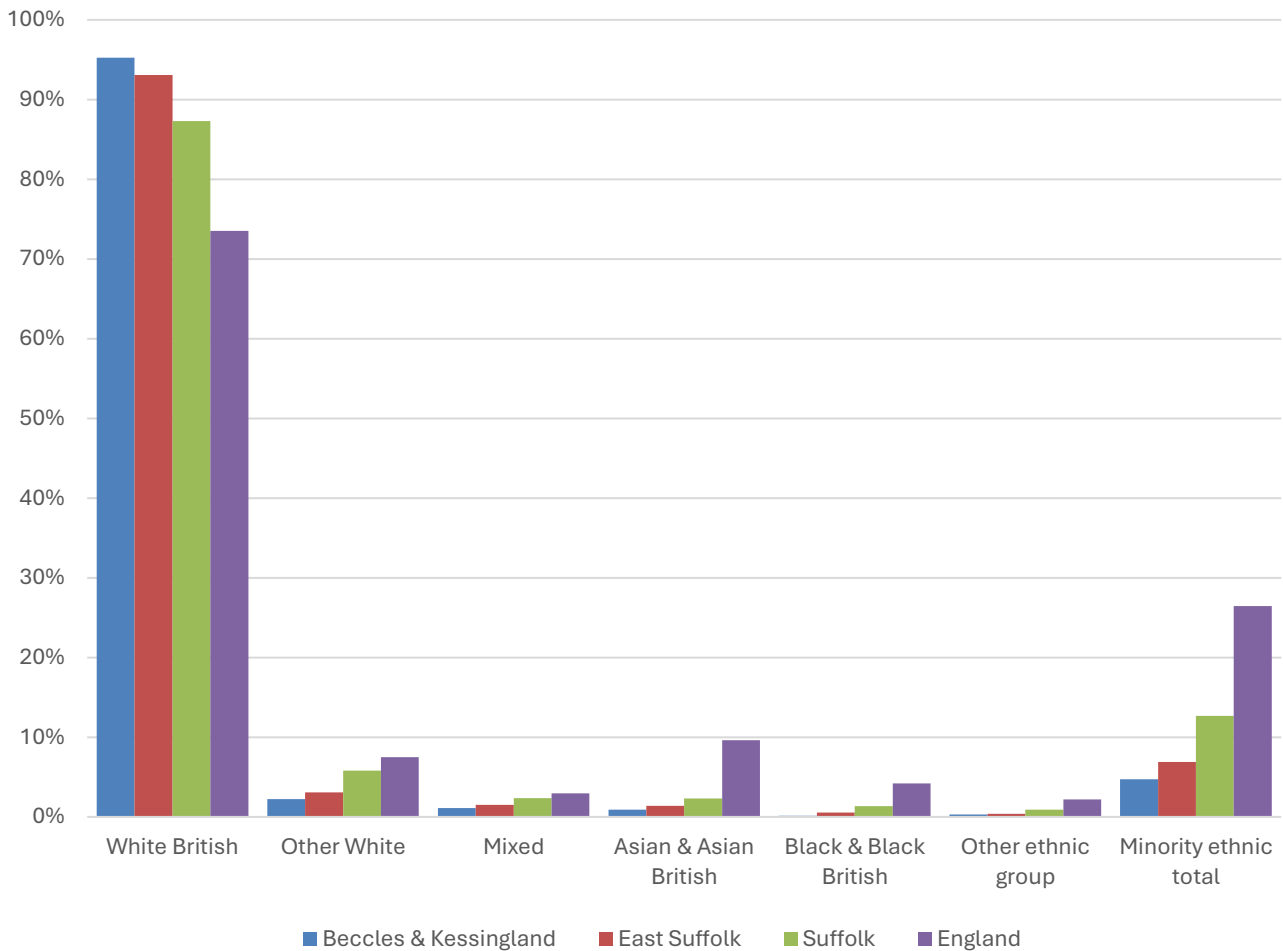
In mid-2024, the estimated population of Beccles and Kessingland stood at 20,355, a decrease of 0.8% over the past decade. The age structure of the component wards and the division as a whole is set out below. The part of Wrentham, Wangford & Westleton Ward in the division is too small to provide a population estimate for.

	Beccles & Kessingland Division	Beccles & Worlingham Ward	Kessingland Ward	Carlton Colville Ward
All Ages	20,355	14,770	4,261	1,324
0-4	734	520	157	57
5-9	934	669	198	67
10-14	1,028	770	173	85
15-19	1,029	765	160	104
20-24	846	640	152	54
25-29	946	700	192	54
30-34	1,076	837	174	65
35-39	1,027	751	206	70
40-44	1,001	761	170	70
45-49	1,044	808	173	63
50-54	1,317	942	268	107
55-59	1,518	1,067	340	111
60-64	1,523	1,066	351	106
65-69	1,392	951	370	71
70-74	1,457	1,003	385	69
75-79	1,576	1,089	399	88
80-84	972	708	219	45
85+	935	723	174	38



- The age pyramid for Beccles and Kessingland division shows a higher proportion of residents aged 50 and over than in England as a whole.
- The most common age group in the division is 75-79-year-olds (7.74% of the local population), followed by 60-64-year-olds (7.48%), and 55-59-year-olds (7.46%).
- Just over 30% of the population of Beccles and Kessingland is of retirement age.
- There is a lower-than-average proportion of children and young people and adults aged under 50 in the division. People in their 30s are particularly underrepresented.

Demographic Profile - Ethnicity

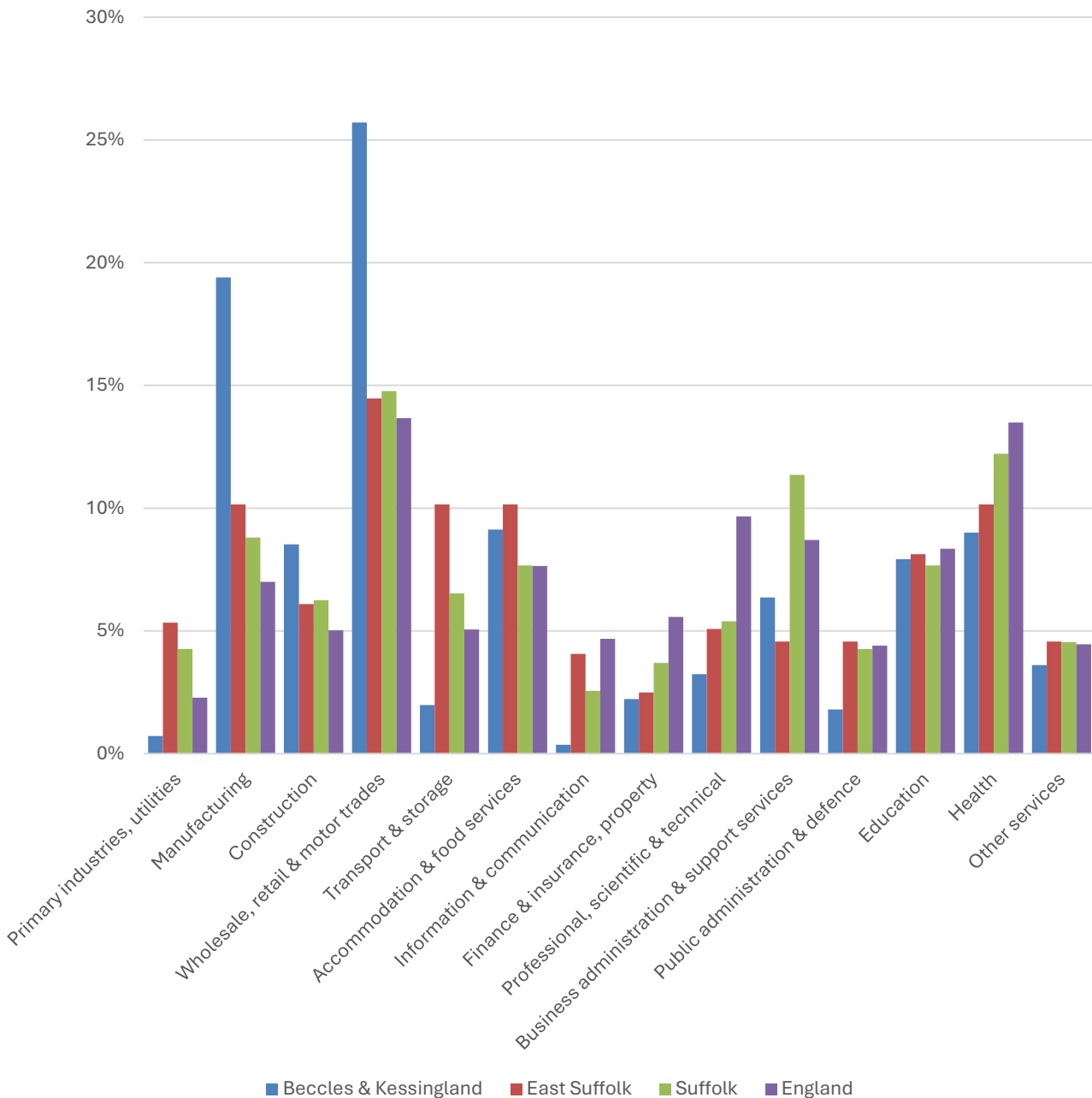


- According to the latest data (2021 Census), 95.3% of the population of Beccles and Kessingland are White British.
- There are 950 (4.7%) people of minority ethnic origin in the division, less than the proportion in Suffolk as a whole and around a sixth of the England average.
- Beccles and Kessingland also has a less ethnically diverse population than East Suffolk district.

	All people		White British		Other White		Mixed		Asian and Asian British		Black and Black British		Other Ethnic Group		Total minority ethnic population	
	Count	%	Count	%	Count	%	Count	%	Count	%	Count	%	Count	%	Count	%
Beccles & Kessingland	20,068		19,118	95.3	450	2.2	226	1.1	183	0.9	30	0.1	61	0.3	950	4.7
East Suffolk	246,060		229,063	93.1	7,564	3.1	3,707	1.5	3,447	1.4	1,357	0.6	922	0.4	16,997	6.9
Suffolk	760,687		664,205	87.3	44,066	5.8	17,807	2.3	17,483	2.3	10,168	1.3	6,958	0.9	96,482	12.7
England				73.5		7.5		3.0		9.6		4.2		2.2		26.5

Economy

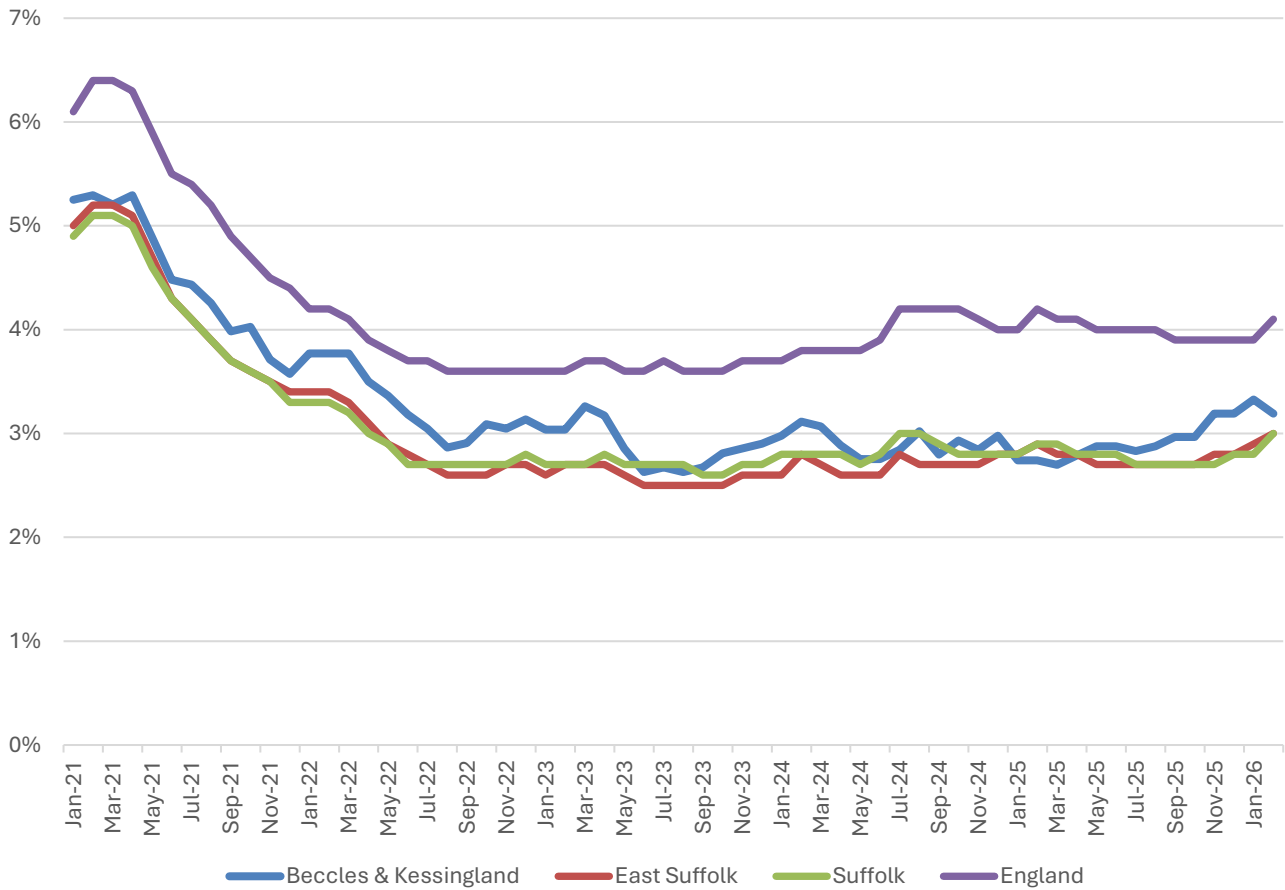
There are around 8,300 people employed in Beccles and Kessingland.



- Manufacturing and wholesale, retail and motor trades are the two most important employment sectors in Beccles and Kessingland.
- Combined, these two sectors provide 45% of jobs in the division; a significantly larger proportion than in East Suffolk, Suffolk, or England.
- No other sector accounts for more than a tenth of jobs in Beccles and Kessingland, but accommodation and food services, construction, health and education are also important in the division.

Labour Market

Out-of-work benefit claimant rate



- In common with East Suffolk, Suffolk and England as a whole, Beccles and Kessingland saw a steady decline in the proportion of the working age population claiming of out-of-work benefits during 2021 following a peak during the COVID-19 pandemic.
- Since then, the claimant rate in the division has been stable at around 3%.
- The claimant rate in Beccles and Kessingland is consistently similar to the district and county figures, and below the national benchmark.

Schools

School Information

Schools in the Division

Name	Phase	Academy Status	No. pupils	Average cohort size at:			
				Foundation Stage (age 4-7)	KS2 (age 7-11)	KS4 (age 14-16)	KS5 (age 16-18)
Barnby & North Cove Community Primary School	Primary	AS	91	9	11		
Beccles Primary Academy	Primary	AS	148	14	29		
Carlton Colville Primary School	Primary	AC	366	45	59		
Kessingland CofE Primary Academy	Primary	AS	198	27	30		
Ravensmere Infant School	Primary	AC	52	12			
St Benet's Catholic Primary School	Primary	AS	69	8	13		
The Albert Pye Community Primary School	Primary	AC	350	39	57		
Worlingham CEVCP School	Primary	LA	324	45	46		
Beccles High School	Secondary	F	182			62	
Sir John Leman High School	Secondary	AC	1,404			239	80

Academy Status key: AS = Academy Sponsored, AC = Academy Converter, LA = LA Maintained, F = Free

Ofsted information

Name	Overall effectiveness	Effectiveness of leadership and management	Behaviour and attitudes	Personal development	Early years provision (if applicable)	Quality of education	Last inspection date
Barnby & North Cove Community Primary School	2	2	2	2	2	2	08/02/2022
Beccles Primary Academy	2	2	1	1	1	2	18/05/2022
Carlton Colville Primary School	5	2	2	2	2	2	25/03/2025
Kessingland CofE Primary Academy	2	2	2	2	2	2	10/12/2019
Ravensmere Infant School	2	2	2	2	2	2	28/11/2023
St Benet's Catholic Primary School	2	2	2	2	2	2	05/07/2022
The Albert Pye Community Primary School	2	2	9	9	9	9	06/06/2013
Worlingham CEVCP School	5	1	1	1	1	1	13/05/2025
Beccles High School	3	3	3	3	9	3	07/02/2024
Sir John Leman High School	2	2	9	9	9	9	13/10/2016

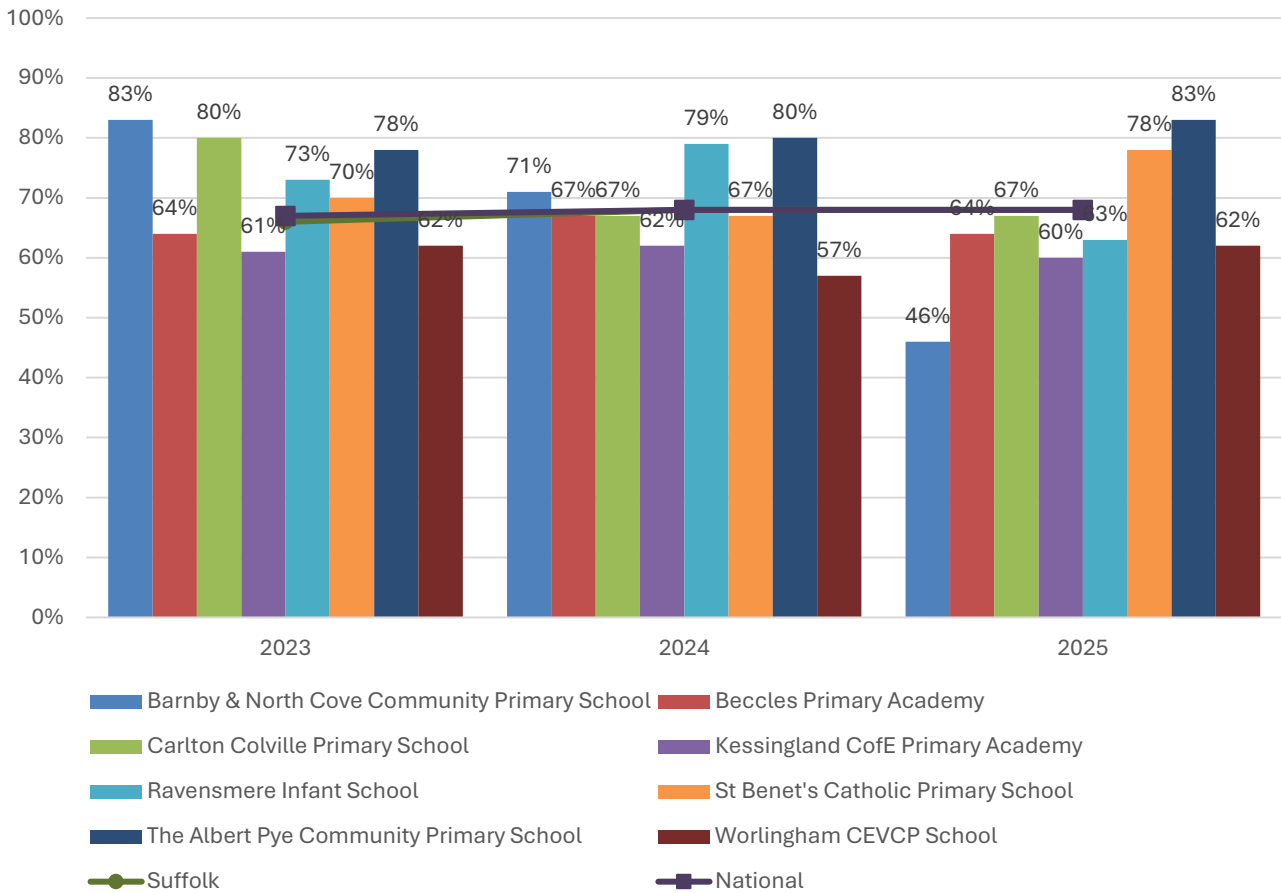
See overleaf for the key to the codes in the table above.

Code	Judgement		Code	Judgement
0	Insufficient evidence		SM	Special measures
1	Outstanding		8	Does not apply
2	Good		9	No judgement
3	Requires improvement		Null	No data available
4	Inadequate		Not judged	Not judged
SWK	Serious weaknesses		5	No overall grade

School Attainment

Foundation Stage Profile (reception)

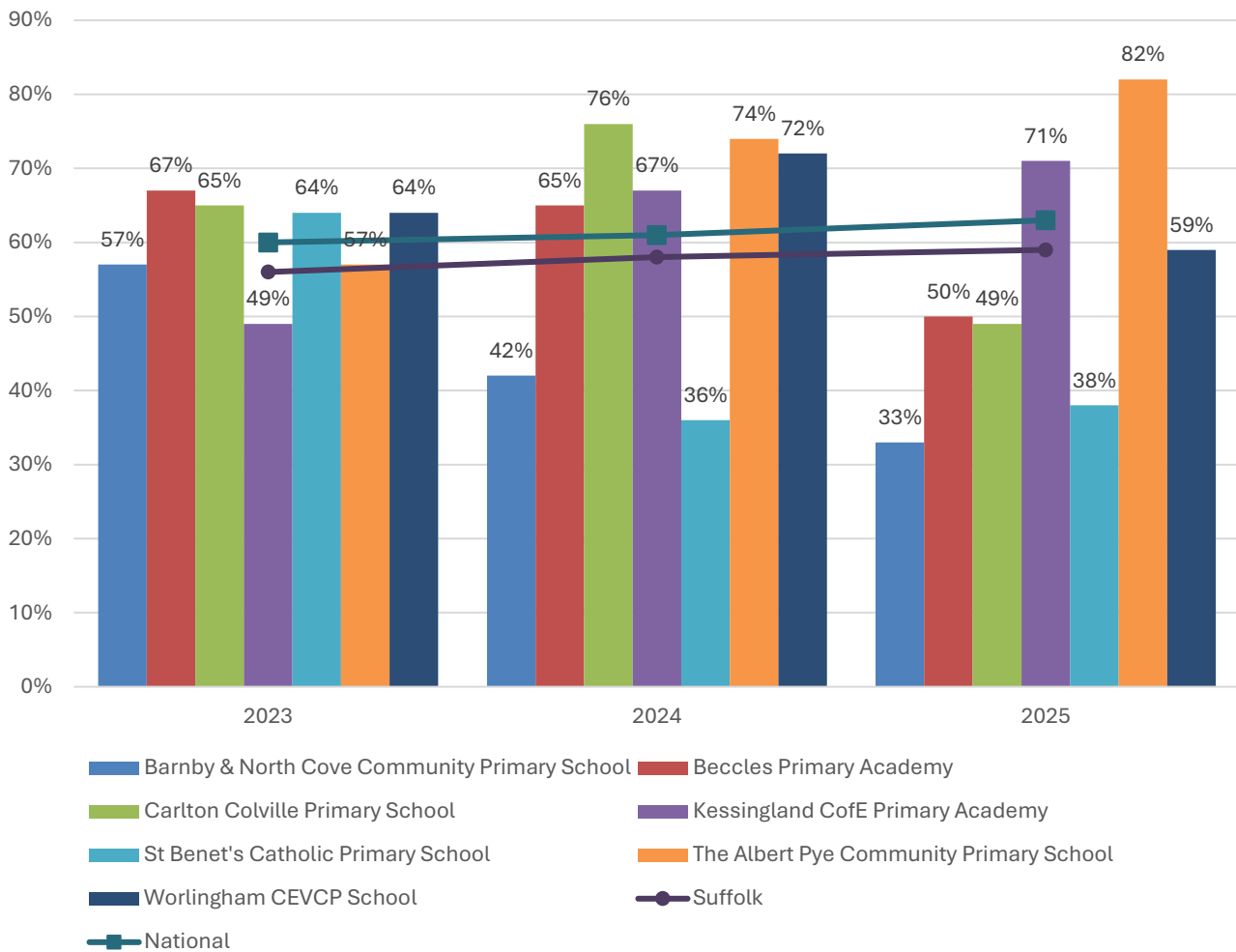
% pupils achieving Good Level of Development (GLD)



- Overall, Foundation Stage attainment at schools in Beccles and Kessingland has been broadly similar to the national average over the last three years. Naturally, there are variations between schools and between academic years.
- The percentage of pupils achieving a Good Level of Development (GLD) at Foundation Stage at The Albert Pye Community Primary School was above the county and national benchmarks in each of the last three years.
- The opposite is true of Beccles Primary Academy, Kessingland Church of England Primary Academy and Worlingham CEVCP Schools, where Foundation Stage attainment was consistently below average from 2023 to 2025, though in many cases the gap was narrow.
- At the other schools in the division, attainment was less consistent.

Key Stage 2 (age 11)

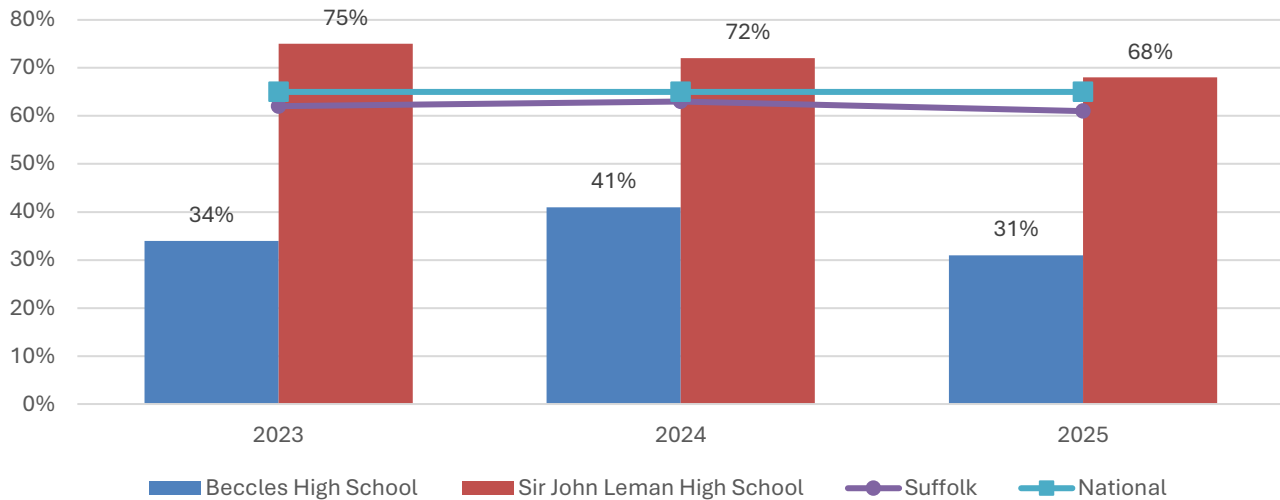
% pupils achieving the Expected Level or better in Reading, Writing and Mathematics



- In 2025, the percentage of pupils achieving the expected level or better in reading, writing and mathematics at Key Stage 2 was above the national average at two of the seven schools in Beccles and Kessingland; namely Kessingland Church of England Primary Academy (71%) and The Albert Pye Community Primary School (82%), the national average was 63%.
- No school in the division recorded consistently above average KS2 attainment across the three most recent academic years, but only Barnby & North Cove Community Primary School did not see attainment levels above the national average in at least one year.

Key Stage 4 (GCSE) (age 16)

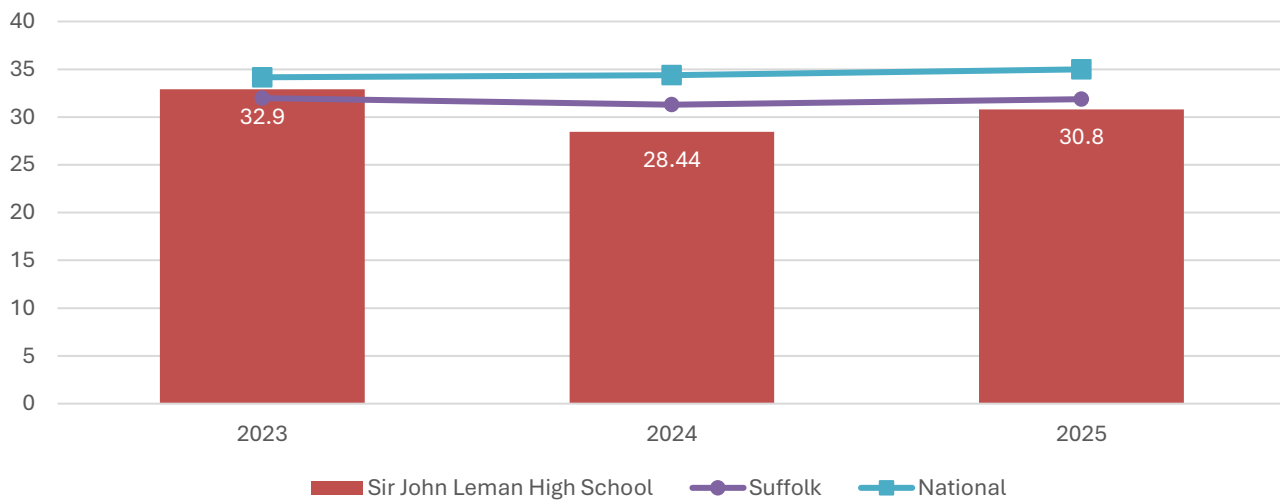
% pupils achieving level 4-9 in English and Mathematics



- Despite small annual falls in 2024 and 2025, the percentage of pupils achieving level 4-9 in English and mathematics at Sir John Lemman High School remained about the national average throughout the period from 2023 to 2025.
- KS4 attainment at Beccles High School has been much lower during this period, ranging between 24 and 34 percentage points below the national average.

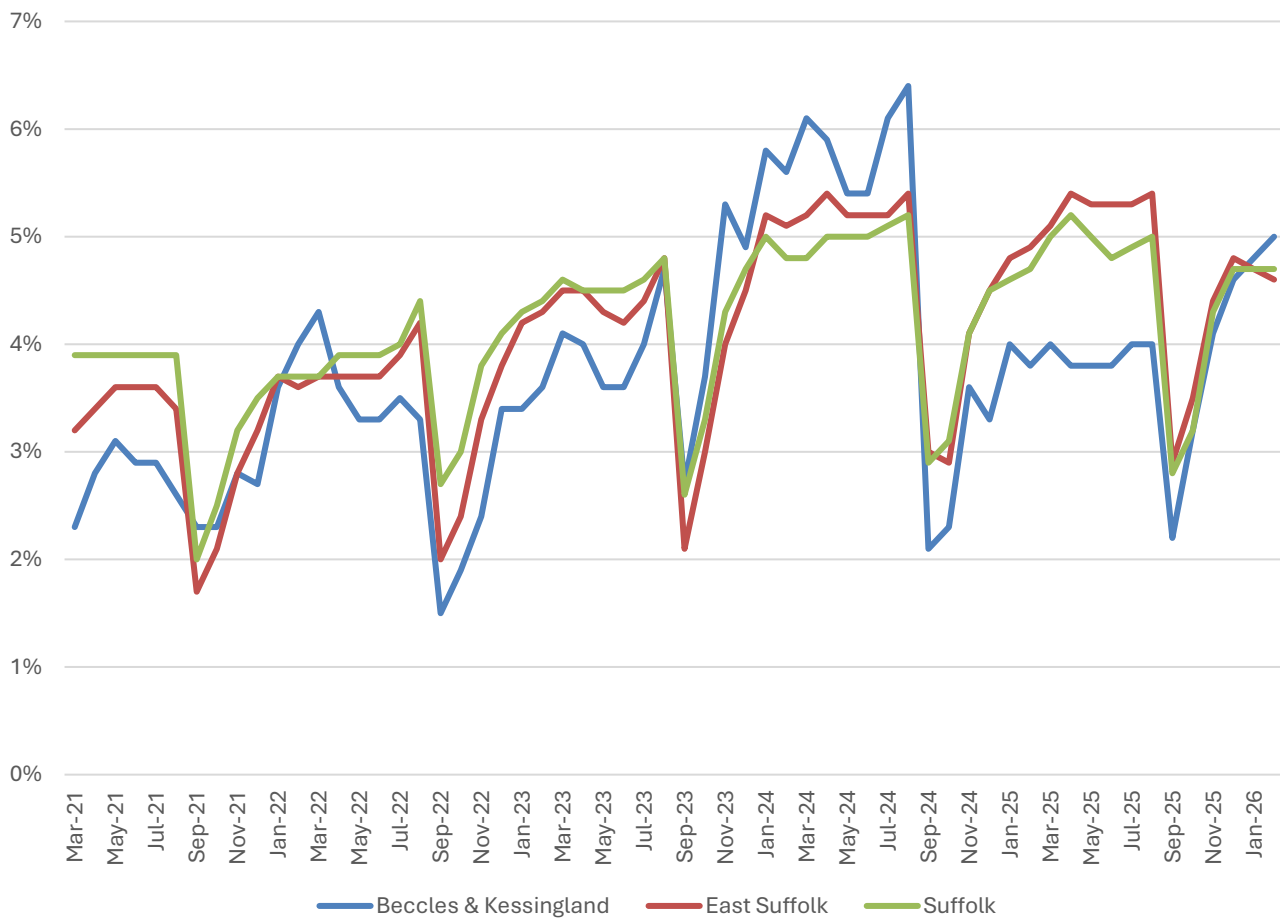
Key Stage 5 (A level) (age 18)

Average A Level Points per entry



- The average A Level Points score per entry at Sir John Lemman High School was 30.8 in 2025, just over four points below the national figure of 34.99.
- KS5 attainment at the school has been consistently below the national average over the last three years of available data.

NEET % (Not in Education, Employment or Training)



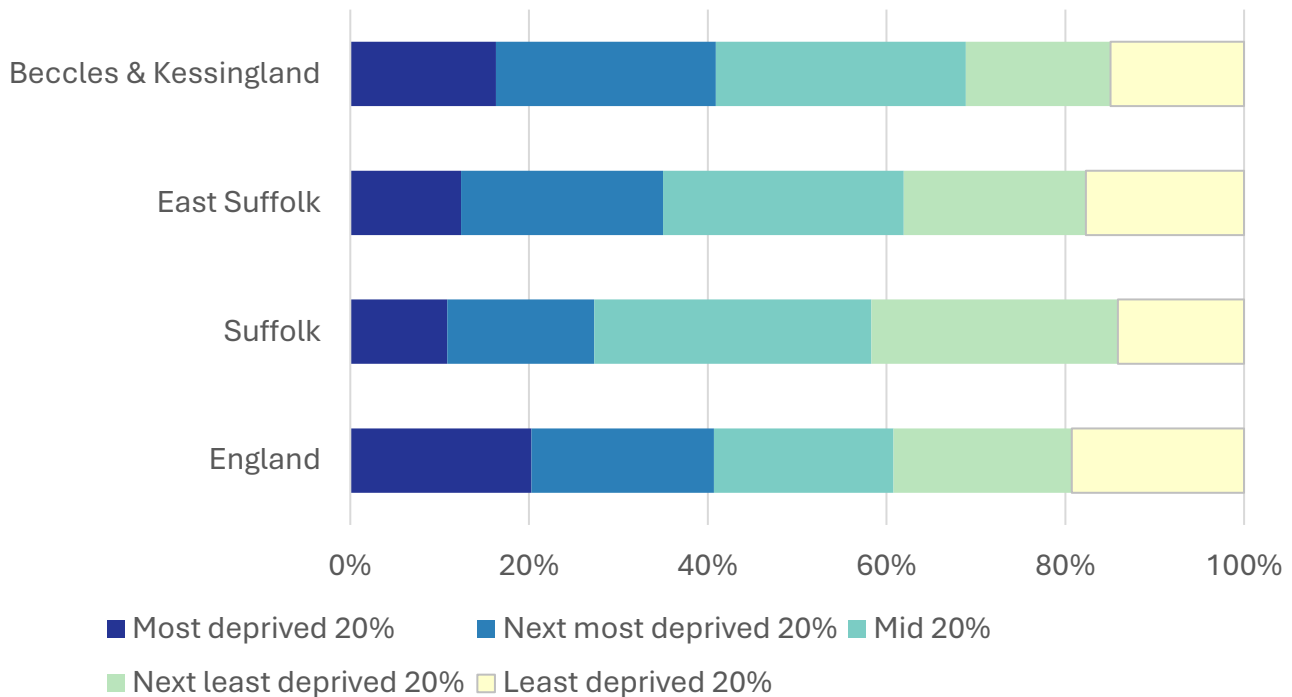
- In February 2026, 5% of 16–17-year-olds in Beccles and Kessingland were classified as NEET (not in education, employment or training).
- NEET levels fluctuate considerably according to the time of year and due to small numbers of 16-17-year-olds in the division, typically being at their lowest at the beginning of a new school year.
- In Beccles and Kessingland, NEET levels are generally similar to or slightly below the district and county averages, but were above average for much of 2024.

Index of Multiple Deprivation (IMD) 2025 (see map overleaf)

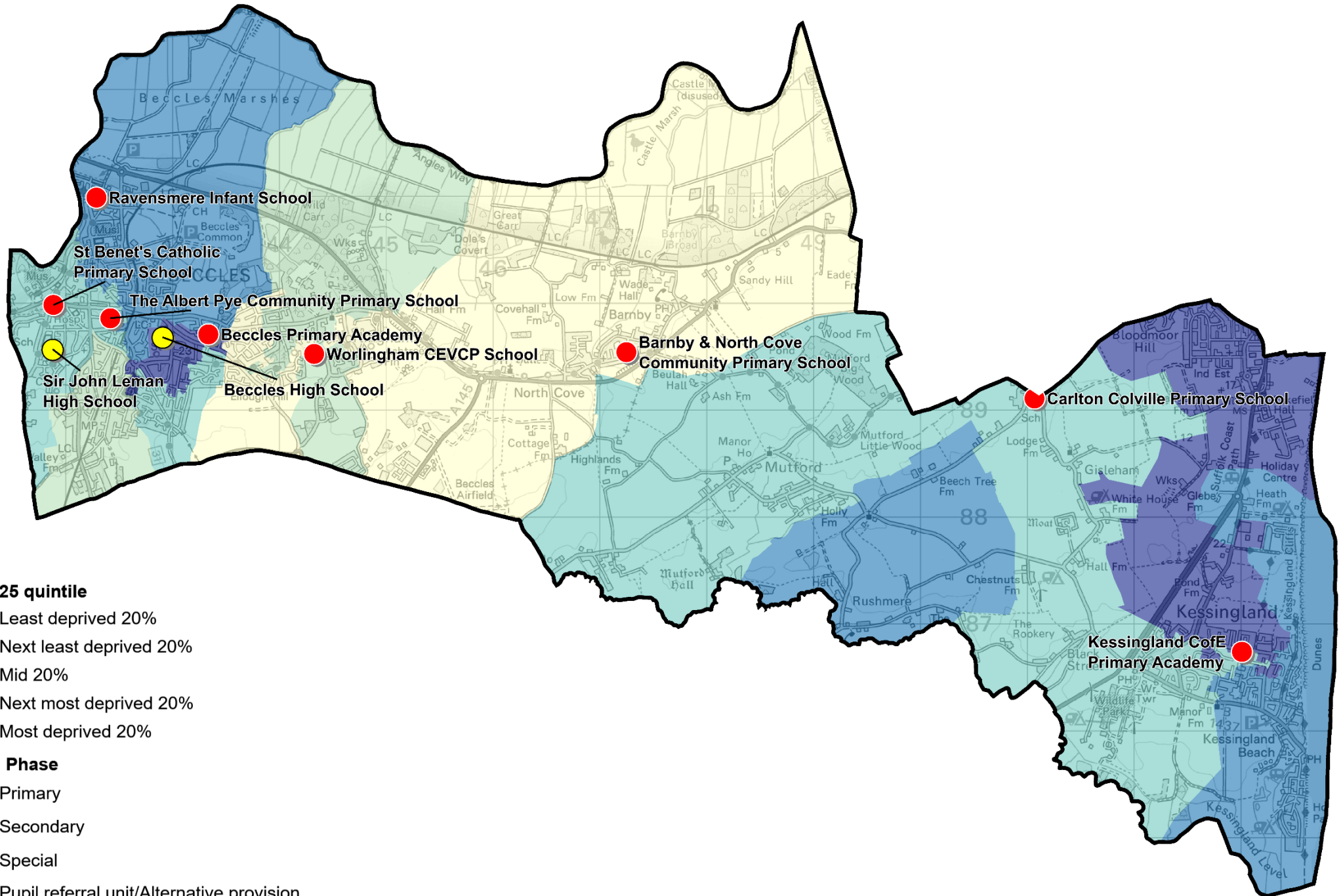
The IMD combines a number of indicators, chosen to cover a range of economic, social and housing issues, into a single deprivation score for each small area in England. This allows each area to be ranked relative to one another according to their level of deprivation. Small areas (Lower Super Output Areas, average population 1,700) are most commonly described as being in 1 of 5 quintile bands. The bottom quintile represents the 20% of areas that are the most deprived in England; these are shaded pale yellow on the map. The top quintile represents the least deprived areas in England and is shaded dark blue.

The Index is widely used to analyse patterns of deprivation, identify areas that would benefit from special initiatives or programmes and as a tool to determine eligibility for specific funding streams.

The chart below shows the percentage of the population of the division that live in areas ranked among each of the five quintiles of deprivation, alongside the district, county and England comparators.



- The 2025 IMD shows that deprivation levels in Beccles and Kessingland are extremely varied, with parts of the division ranked in each deprivation quintile in England.
- Part of Beccles town, part of Kessingland and the very northeast of the division approaching Pakefield are ranked among the most deprived fifth of areas in England. These areas are home to about 16% of the division's population.
- Part of eastern Beccles and Worlingham, and the villages of Barnby and North Cove and the surrounding rural area are among the least deprived 20% of areas in England, and account for 15% of the population of the division.
- A further quarter of the population of Beccles and Kessingland live in areas ranked among the second most deprived quintile, 28% in the mid quintile and 16% in the second least deprived quintile.
- See the map overleaf for the distribution of IMD 2025 results across the division.



IMD 2025 quintile

- Least deprived 20%
- Next least deprived 20%
- Mid 20%
- Next most deprived 20%
- Most deprived 20%

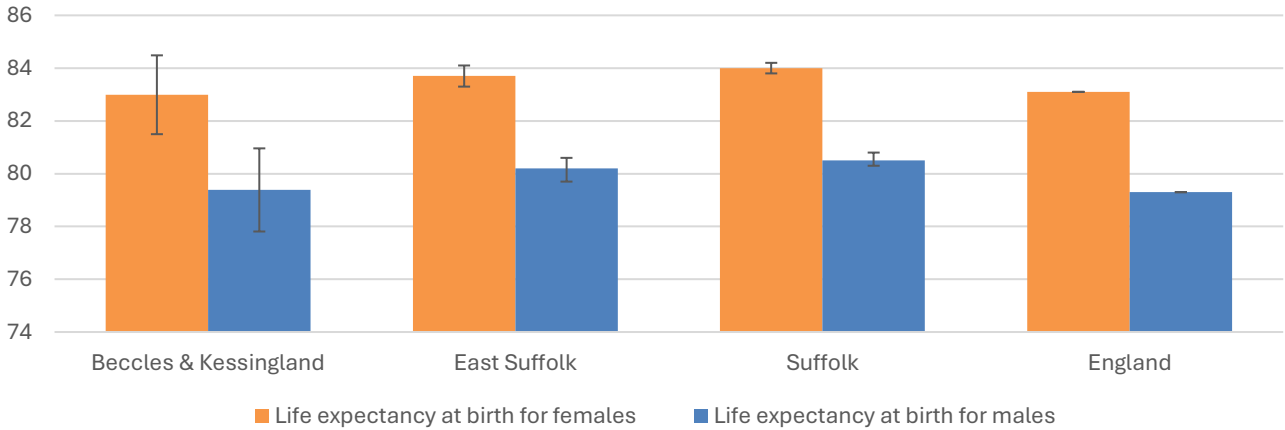
School Phase

- Primary
- Secondary
- Special
- Pupil referral unit/Alternative provision
- Nursery

Health

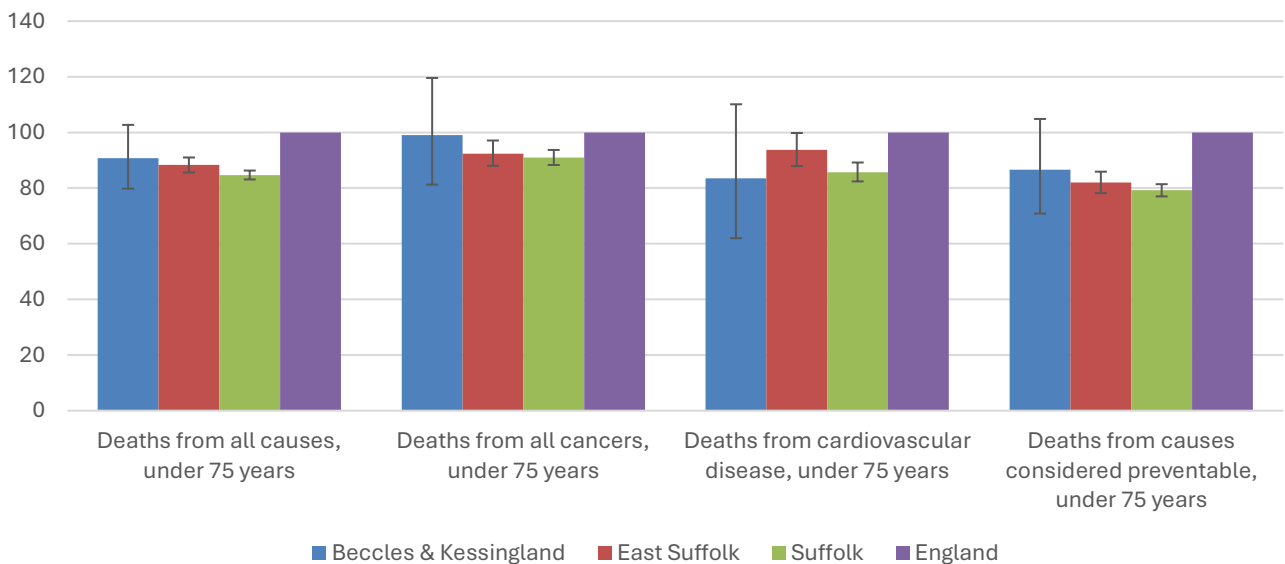
The local data used here is based on relatively small numbers. The confidence limits provide an indication of the reliability of the data. The 95% confidence intervals utilised on the chart provide a range within which there is 95% chance of the true result lying.

Life expectancy at birth



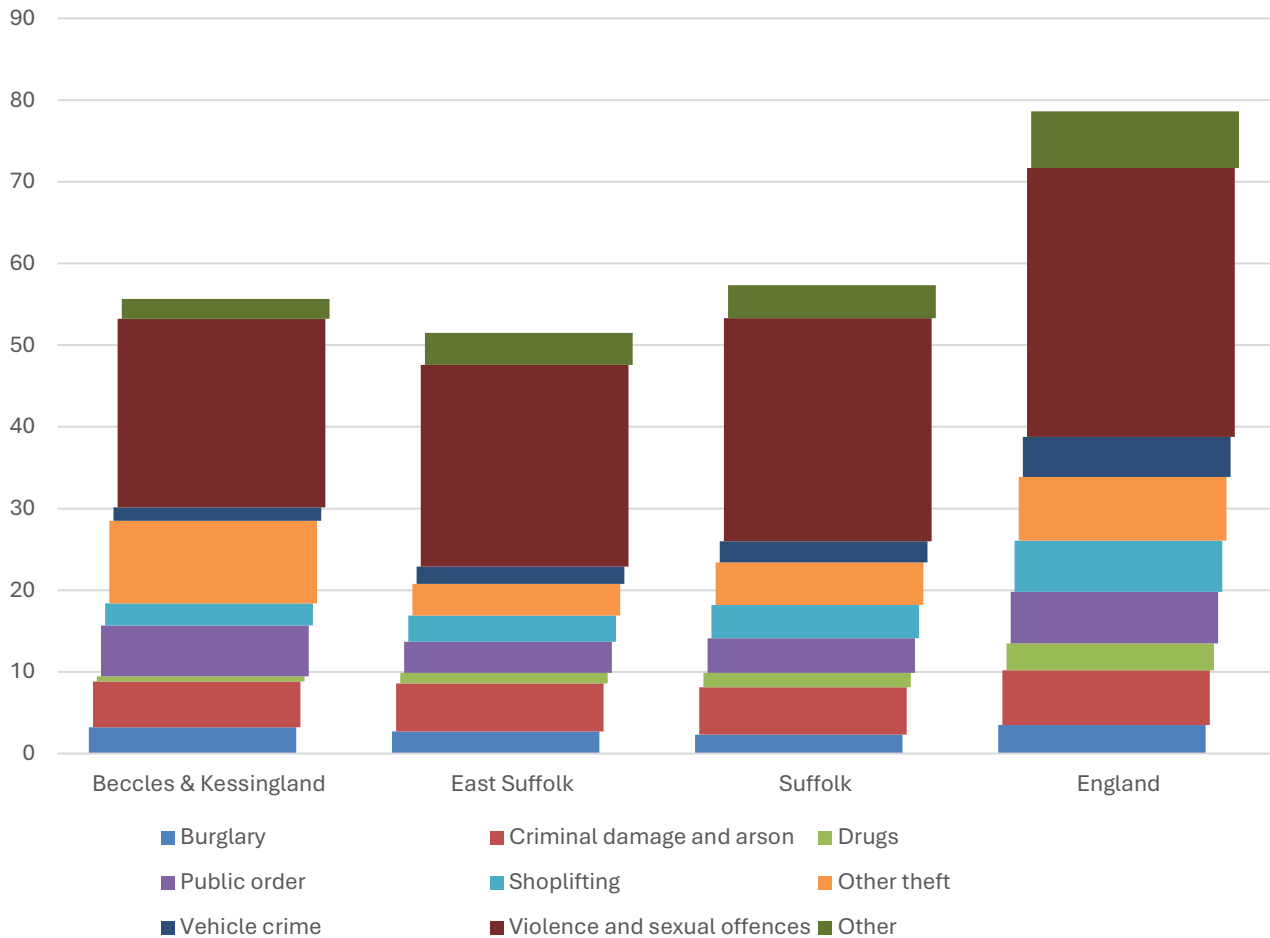
- Estimated life expectancy at birth for both females and males in Beccles and Kessingland is statistically similar to the East Suffolk, Suffolk and England averages.
- Current life expectancy at birth in the division is 83 for females (the England average is 83.1), and 79.4 for males (compared to 79.3 nationally).

Deaths, under 75 years, standardised mortality ratio



- Estimated standardised mortality ratios for early deaths from all causes, all cancers, cardiovascular disease and causes considered preventable in Beccles and Kessingland are below 100, indicating that deaths in under 75s due to these causes are lower than in England. However, these variations are not statistically significant.
- The standardised mortality ratio data shown here means that for every 100 early deaths from all causes across England as a whole, there are an estimated 91 comparable deaths in Aldeburgh and Leiston.

Crime & Community Safety



- Crime levels in Beccles and Kessingland are similar to the district and county averages, with 56 crimes per 1,000 residents in the division in the 12 months to the end of January 2026, compared to 52 in East Suffolk and 57 countywide.
- The division has a relatively high recorded rate of other theft offences; 10.1 per 1,000 population, compared to 3.9 in East Suffolk and 7.8 across England as a whole.
- The most common type of crime recorded during this period was violence and sexual offences, which accounted for about 40% of all recorded crimes in the division. These types of crimes are recorded at a lower rate in Beccles and Kessingland than each of the comparator areas, however.

Additional Information

Parishes in Division

Barnby	Mutford
Beccles	North Cove
Gisleham	Rushmere
Kessingland	Worlingham

Data sources

Category	Indicator	Source
Demographic Profile	Quinary population table 2024	ONS 2024 mid-year population estimates
	Population pyramid 2024	ONS 2024 mid-year population estimates
	Ethnicity 2021	ONS 2021 Census
Economy	Employment by broad industrial sector 2024	ONS Business Register and Employment Survey via NOMIS
Labour market	Claimant count: The number of people claiming Jobseeker's Allowance plus those who claim Universal Credit who are out of work (% 16-64 population) January 2021-February 2026	DWP via NOMIS
Education	School information and attainment 2023-2025	Suffolk County Council CYP iHub
	% 16-17-year-olds NEET (Not in Employment, Education or Training) March 2021 to February 2026	Suffolk County Council CYP iHub via the Suffolk Observatory
Deprivation	Index of Multiple Deprivation 2025	Ministry of Housing, Communities and Local Government
Health	Life expectancy at birth 2016-2020 (2018-2020 for comparator areas)	Office for Health Improvement and Disparities
Health	Standardised mortality ratio for deaths from all causes, cancer, cardiovascular disease, and from causes considered preventable (under 75 years), 2016-2020 (2019-2023 for comparator areas). The standardised mortality ratio is the ratio of observed deaths in the study group to expected deaths in the general population	Office for Health Improvement and Disparities
Community Safety	Recorded crime rate per 1,000 resident population February 2025 to January 2026	Data.police.uk via the Suffolk Observatory

For more data and information about Beccles and Kessingland Electoral Division, see the Suffolk Observatory www.suffolkobservatory.info

