

Aldeburgh & Leiston

County Electoral Division profile
May 2026

This division comprises part of Aldeburgh & Leiston Ward





Contents

- Demographic Profile: Age & Ethnicity
- Economy and Labour Market
- Schools & NEET
- Index of Multiple Deprivation
- Health
- Crime & Community Safety
- Additional Information
- Data Sources

Electoral Division Profiles: an introduction

These profiles have been produced to support elected members, constituents and other interested parties in understanding the demographic, economic, social and educational profile of their neighbourhoods. We have used the latest data available at the time of publication.

Much more data is available from national and local sources than is captured here, but it is hoped that the profile will be a useful starting point for discussion, where local knowledge and experience can be used to flesh out and illuminate the information presented here.

The profile can be used to help look at some fundamental questions e.g.

- Does the age profile of the population match or differ from the national profile?
- Is there evidence of the ageing profile of the county in all the wards in the Division or just some?
- How diverse is the community in terms of ethnicity?
- What is the impact of deprivation on families and residents?
- Does there seem to be a link between deprivation and school performance?
- What is the breakdown of employment sectors in the area?
- Is it a relatively healthy area compared to the rest of the district or county?
- What sort of crime is prevalent in the community?

A vast amount of additional data is available on the **Suffolk Observatory**

www.suffolkobservatory.info

The Suffolk Observatory is a free online resource that contains all Suffolk's vital statistics; it is the one-stop-shop for information and intelligence about Suffolk. Through data, reports and maps, the Suffolk Observatory provides a comprehensive picture of the County. It is a great source for useful facts and figures that can be used for writing reports and presentations, informing strategic and business planning, preparing funding applications or supporting academic research. Data is presented around the key themes of population, children and young people, health and social care, housing, crime and community safety, deprivation, economy and employment and environment. All areas of the county are covered, right down to district, electoral division, ward and parish level, with information easily accessible in a variety of formats. You can also build your own reports for custom areas.

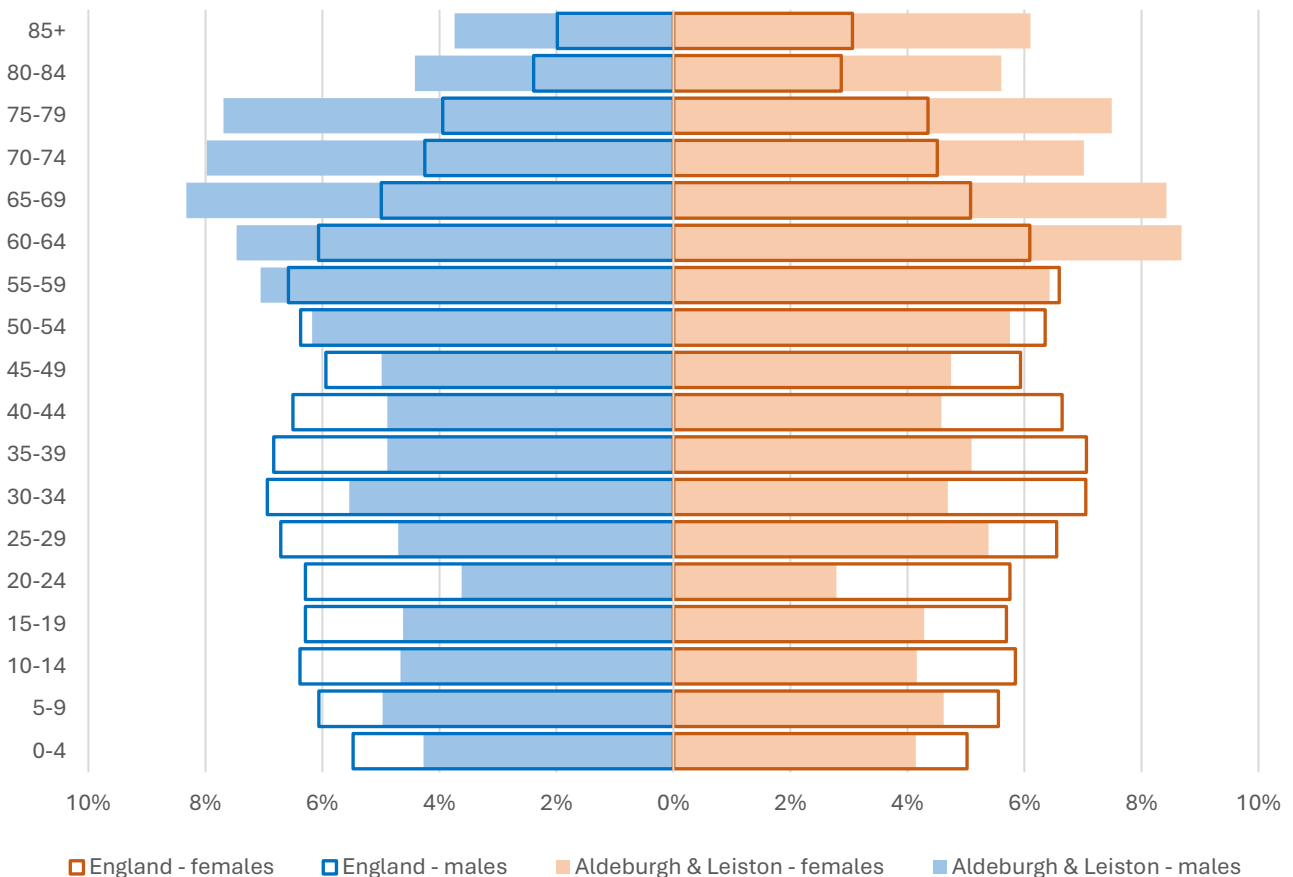
Technical Notes:

1. Where electoral divisions do not exactly match the boundaries at which the data is available (e.g. ward, Output Area or Lower Super Output Area), we have adopted a "best-fit" approach to produce a dataset.
2. District, county and national level data is provided where possible to provide a context for comparisons.

Demographic Profile - Age

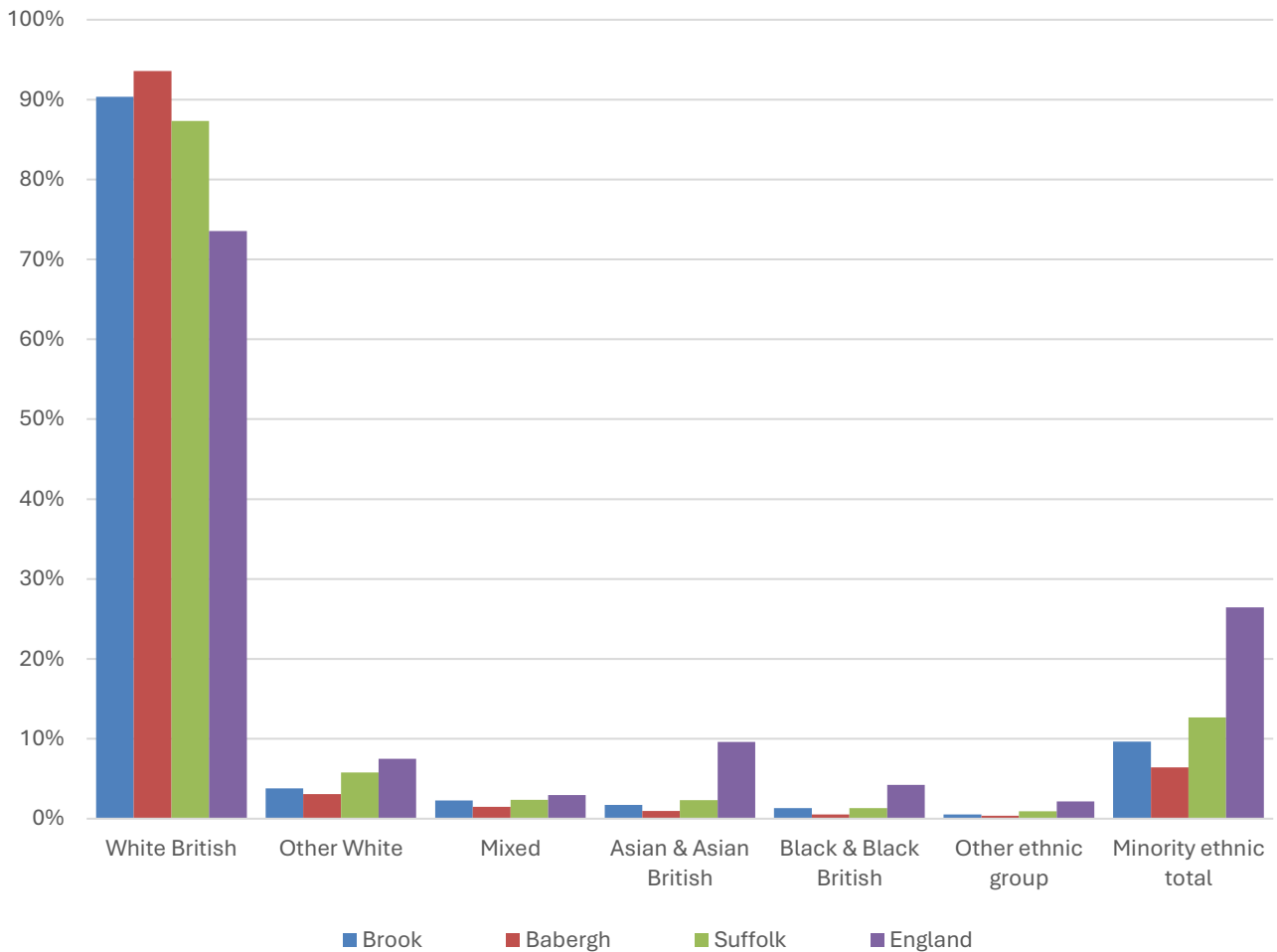
In mid-2024, the estimated population of Aldeburgh and Leiston stood at 10,348, an increase of 5% over the past decade. The age structure of the division set out below.

Aldeburgh & Leiston Division	
All Ages	10,348
0-4	435
5-9	495
10-14	455
15-19	460
20-24	329
25-29	524
30-34	527
35-39	517
40-44	489
45-49	503
50-54	616
55-59	696
60-64	839
65-69	867
70-74	773
75-79	785
80-84	522
85+	516



- The age pyramid for Aldeburgh and Leiston division shows a considerably higher proportion of residents aged 60 and over than in England as a whole.
- The most common age group in the division is 65-69-year-olds (8.4% of the local population), followed by 60-64-year-olds (8.1%), and 75-79-year-olds (7.6%).
- Just over a third of the population (33.5%) of Aldeburgh and Leiston is of retirement age.
- There is a far lower-than-average proportion of children and young people, and adults aged under 50.

Demographic Profile - Ethnicity

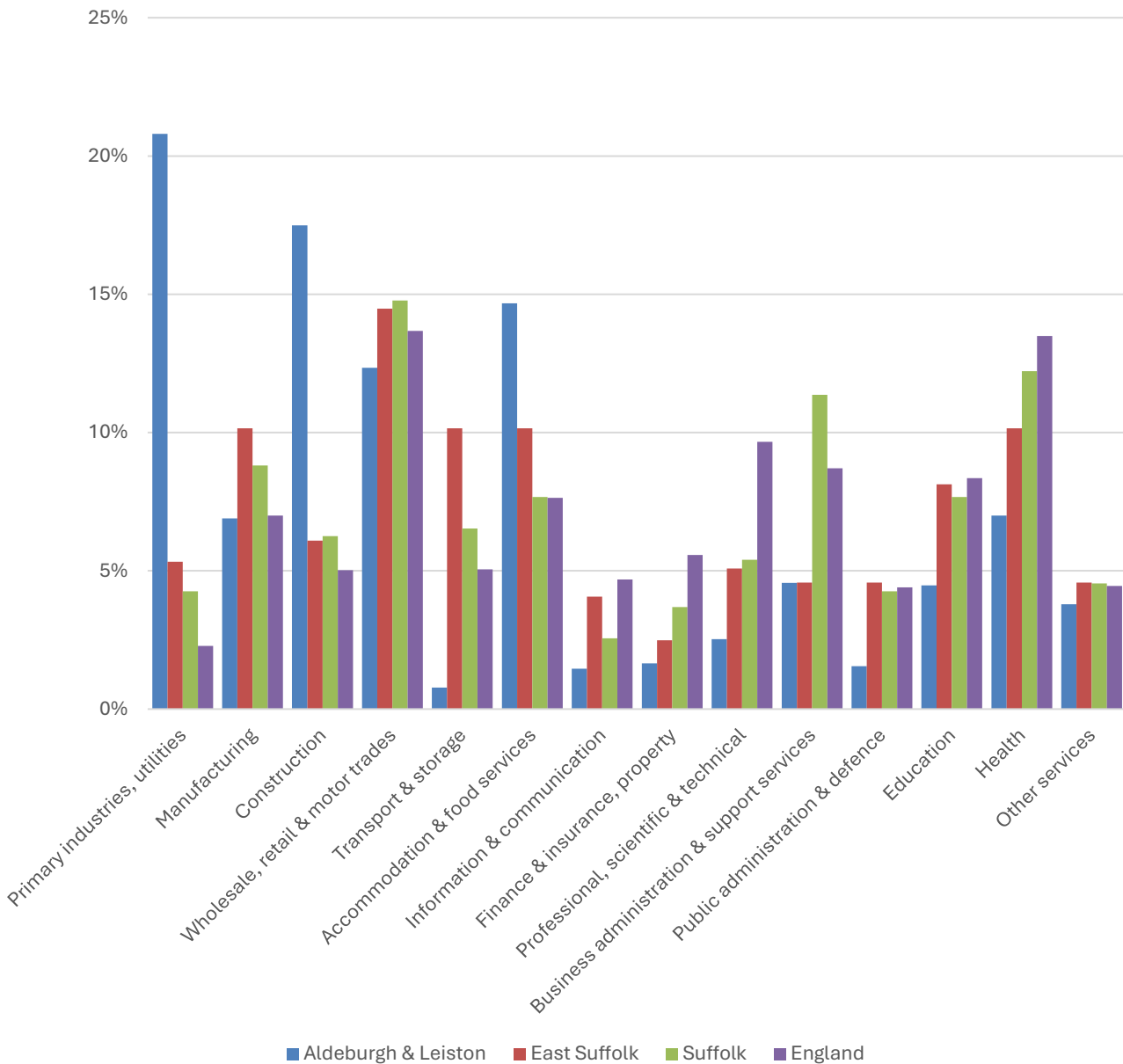


- According to the latest data (2021 Census), 93.3% of the population of Aldeburgh and Leiston are White British.
- There were 681 (6.7%) people of minority ethnic origin in the division, less than the proportion in Suffolk as a whole and around a quarter of the England average.
- Aldeburgh and Leiston has a broadly similar diversity profile to East Suffolk district, and lower proportions of all minority ethnic groups than Suffolk as a whole.

	All people	White British		Other White		Mixed		Asian and Asian British		Black and Black British		Other Ethnic Group		Total minority ethnic population	
	Count	Count	%	Count	%	Count	%	Count	%	Count	%	Count	%	Count	%
Aldeburgh & Leiston	10,095	9,414	93.3	386	3.8	104	1.0	120	1.2	26	0.3	45	0.4	681	6.7
East Suffolk	246,060	229,063	93.1	7,564	3.1	3,707	1.5	3,447	1.4	1,357	0.6	922	0.4	16,997	6.9
Suffolk	760,687	664,205	87.3	44,066	5.8	17,807	2.3	17,483	2.3	10,168	1.3	6,958	0.9	96,482	12.7
England			73.5		7.5		3.0		9.6		4.2		2.2		26.5

Economy

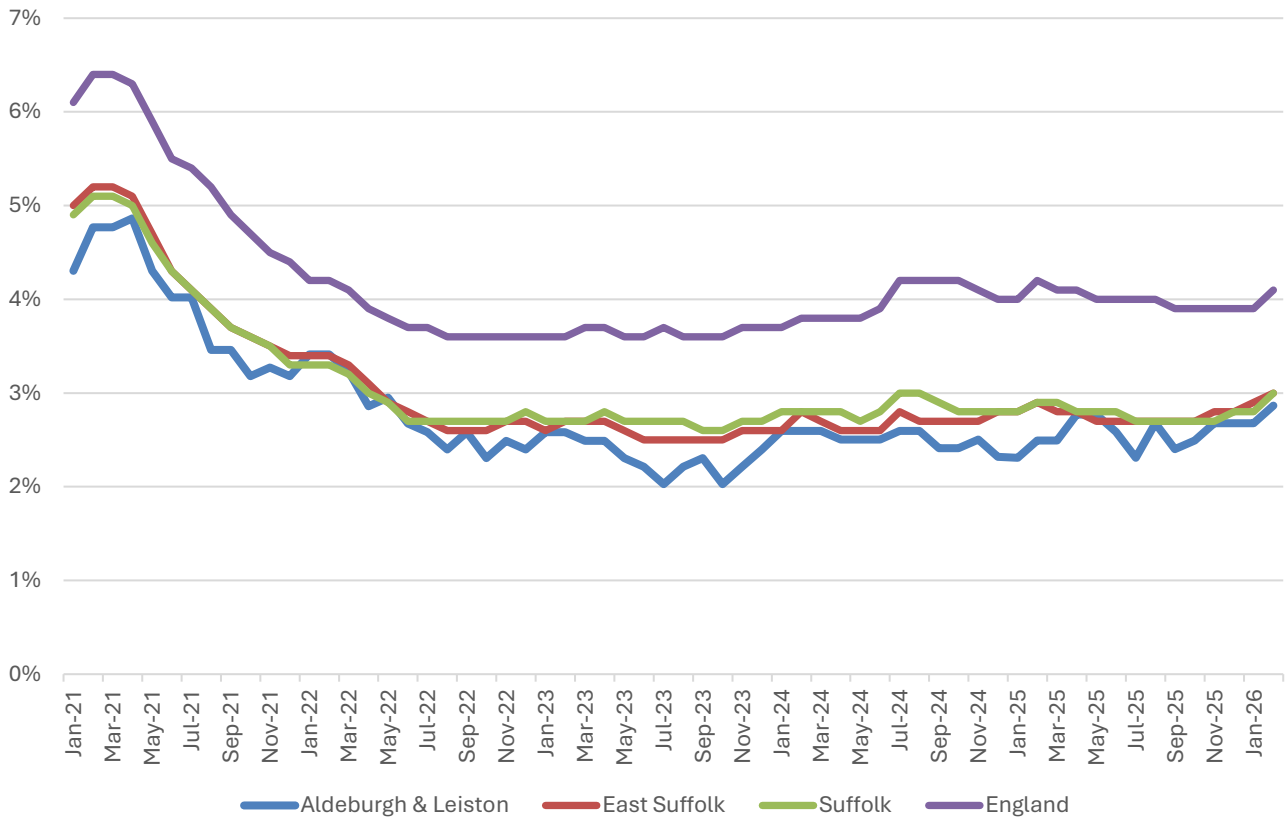
There are around 5,100 people employed in Aldeburgh and Leiston.



- Primary industries and utilities, construction, accommodation and food services, and wholesale, retail and motor trades are the key employment sectors in Aldeburgh and Leiston.
- These four sectors provide two-thirds of jobs in the division.
- Activities at Sizewell nuclear power station fall under primary industries and utilities and construction sectors.

Labour Market

Out-of-work benefit claimant rate



- In common with East Suffolk, Suffolk and England as a whole, Aldeburgh and Leiston saw a steady decline in the proportion of the working age population claiming of out-of-work benefits during 2021 following a peak during the COVID-19 pandemic.
- Since then, the claimant rate in the division has been stable at between 2% and 3%.
- The claimant rate in Aldeburgh and Leiston is consistently similar to the district and county figures, and about 1-1.5 percentage points below the national benchmark.

Schools

School Information

Schools in the Division

Name	Phase	Academy Status	No. pupils	Average cohort size at:			
				Foundation Stage (age 4-7)	KS2 (age 7-11)	KS4 (age 14-16)	KS5 (age 16-18)
Aldeburgh Primary School	Primary	AC	78	12	12		
Coldfair Green Community Primary School	Primary	AC	160	24	16		
Leiston Primary School	Primary	AC	383	51	43		
Alde Valley Academy	Secondary	AS	645			103	

Academy Status key: AS = Academy Sponsored, AC = Academy Converter, LA = LA Maintained, F = Free

Ofsted information

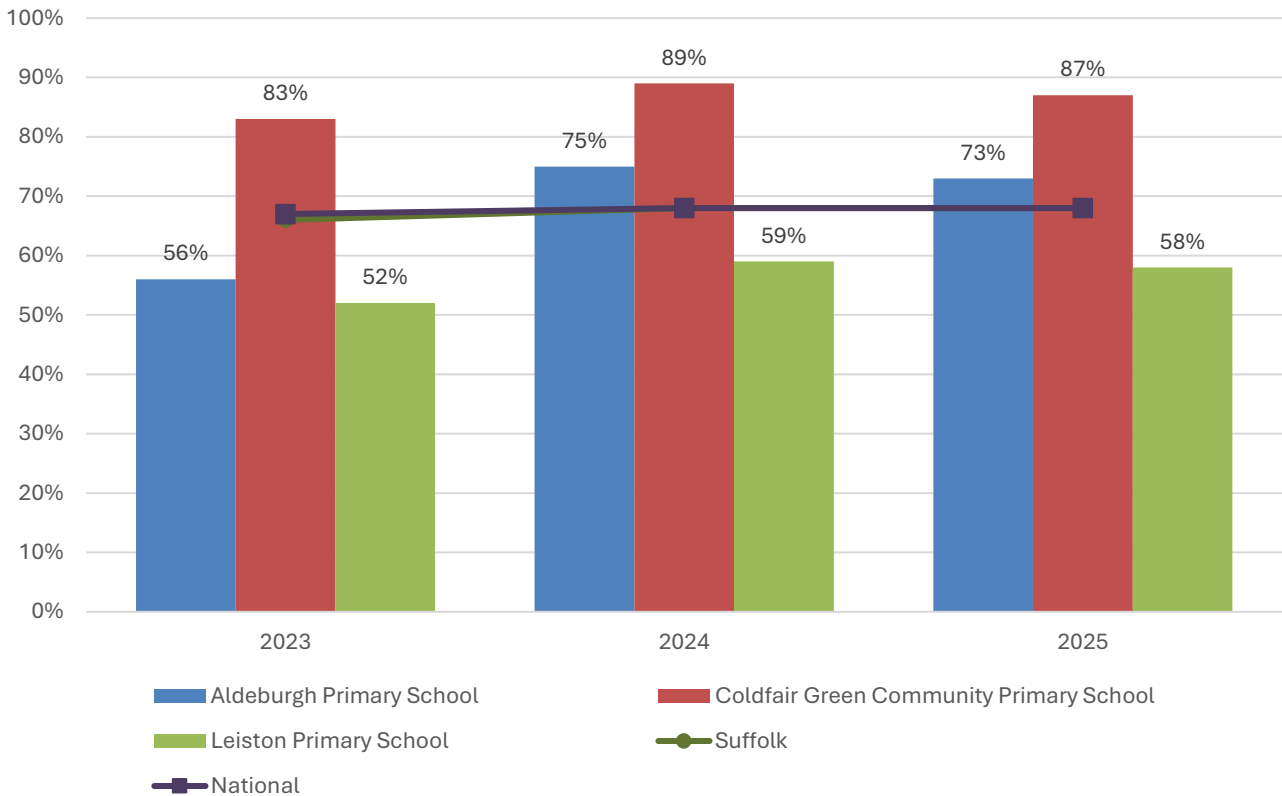
Name	Overall effectiveness	Effectiveness of leadership and management	Behaviour and attitudes	Personal development	Early years provision (if applicable)	Quality of education	Last inspection date
Aldeburgh Primary School	2	2	2	2	2	2	04/03/2020
Coldfair Green Community Primary School	2	2	2	2	2	2	20/06/2023
Leiston Primary School	5	2	2	2	2	3	03/06/2025
Alde Valley Academy	3	3	3	3	9	3	09/07/2024

Code	Judgement	Code	Judgement
0	Insufficient evidence	SM	Special measures
1	Outstanding	8	Does not apply
2	Good	9	No judgement
3	Requires improvement	Null	No data available
4	Inadequate	Not judged	Not judged
SWK	Serious weaknesses	5	No overall grade

School Attainment

Foundation Stage Profile (reception)

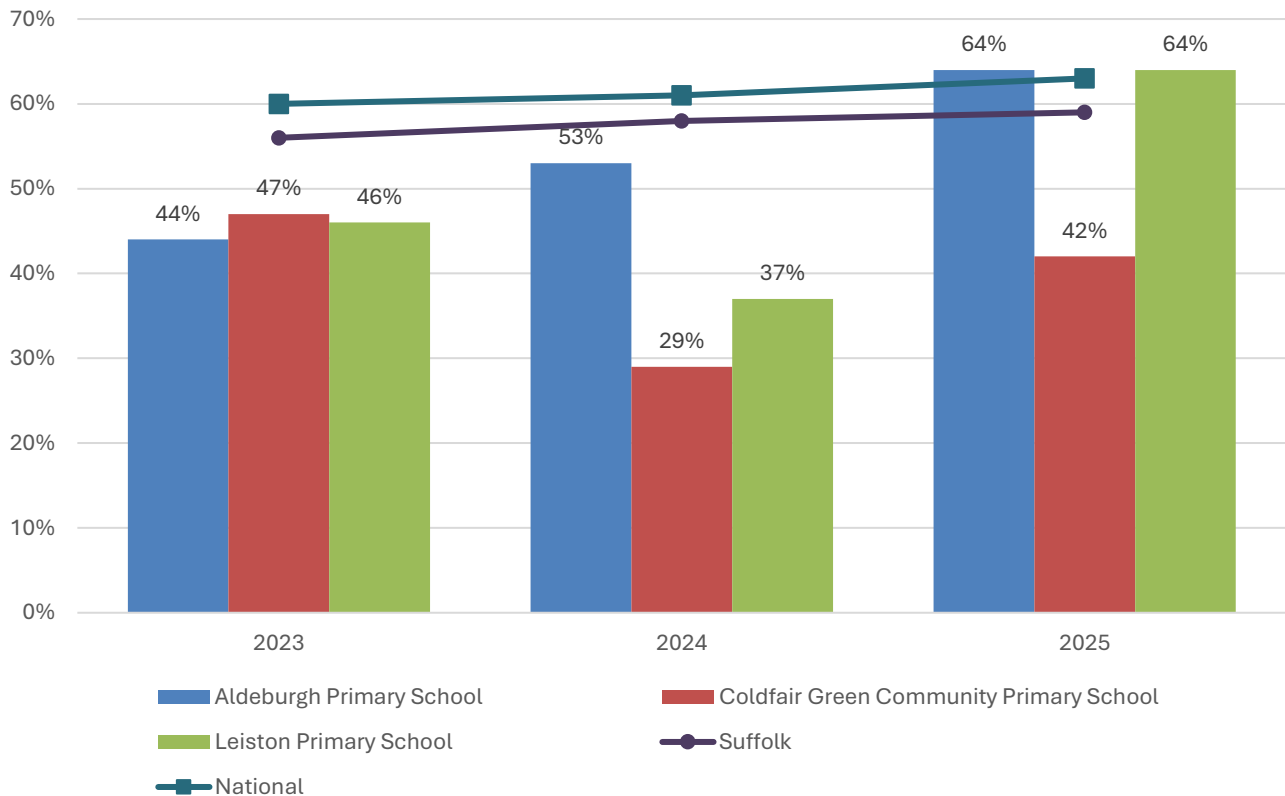
% pupils achieving Good Level of Development (GLD)



- The percentage of pupils achieving a Good Level of Development (GLD) at Foundation Stage (FS) at Coldfair Green Community Primary School has been above the county and national average over each of the last three academic years.
- The opposite is true at Leiston Primary School, where attainment was below average from 2023 to 2025.
- At Aldeburgh Primary School, 56% of pupils achieved a GLD at FS in 2023, below the national figure of 67%. However, attainment in 2024 and 2025 has improved, and was above the national benchmark in both years.

Key Stage 2 (age 11)

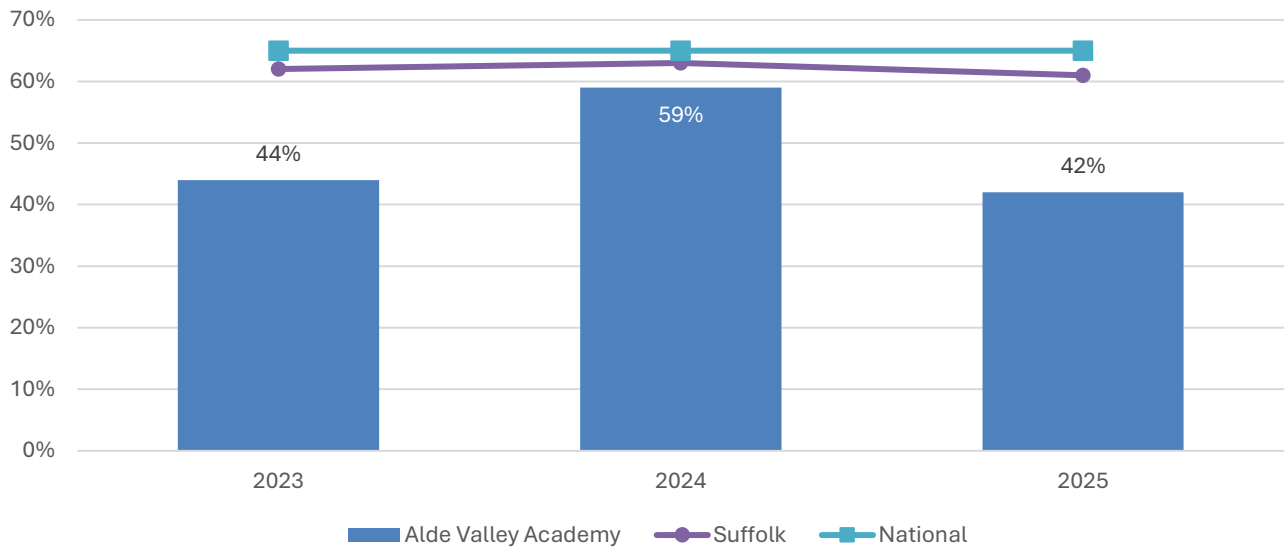
% pupils achieving the Expected Level or better in Reading, Writing and Mathematics



- Key stage 2 attainment at primary schools in Aldeburgh and Leiston has generally been below the county and national benchmarks.
- In 2023 and 2024, the percentage of pupils achieving the expected level or better in reading, writing and mathematics was below the Suffolk and national level at Aldeburgh Primary School, Coldfair Green Community School and Leiston Primary School.
- There was an improvement in KS2 attainment locally in 2025. The percentage of pupils achieving the expected level or better in reading, writing and mathematics climbed to one percentage point above the national benchmark at both Aldeburgh Primary School and Leiston Primary School.
- Attainment at Coldfair Green Community Primary School remained below average in 2025.

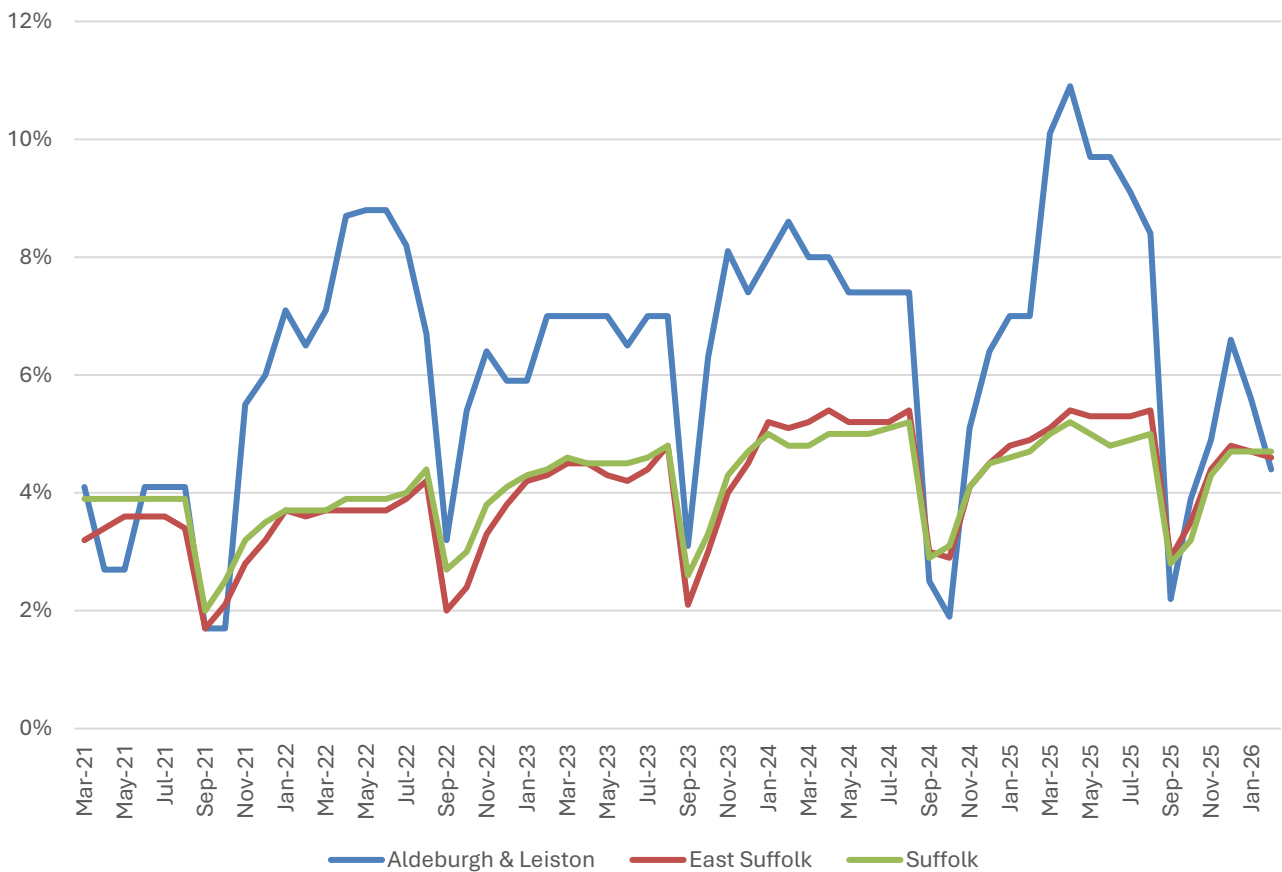
Key Stage 4 (GCSE) (age 16)

% pupils achieving level 4-9 in English and Mathematics



- Key Stage 4 attainment at Alde Valley Academy has been below the Suffolk and national levels throughout the last three years of available data.
- According to the most recent data, 42% of pupils at Alde Valley Academy achieved level 4-9 in English and mathematics, compared to 61% who achieved this standard across Suffolk as a whole, and 65% nationally.

NEET % (Not in Education, Employment or Training)



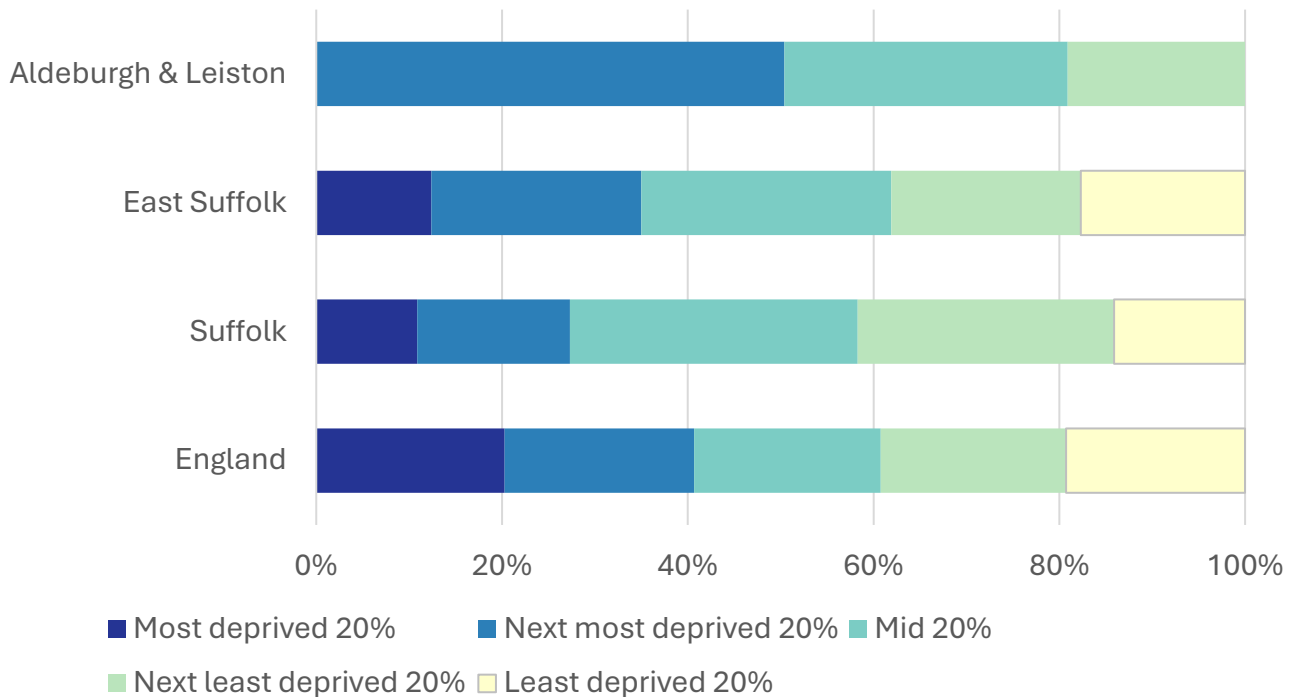
- In February 2026, 4.4% of 16–17-year-olds in Aldeburgh and Leiston were classified as NEET (not in education, employment or training).
- NEET levels fluctuate considerably according to the time of year and due to small numbers of 16-17-year-olds in the division, typically being at their lowest at the beginning of a new school year.
- In Aldeburgh and Leiston, NEET levels are generally markedly above the district and county levels away from the beginning of a new school year, and generally reach a peak of 7-9% in spring and summer.

Index of Multiple Deprivation (IMD) 2025 (see map overleaf)

The IMD combines a number of indicators, chosen to cover a range of economic, social and housing issues, into a single deprivation score for each small area in England. This allows each area to be ranked relative to one another according to their level of deprivation. Small areas (Lower Super Output Areas, average population 1,700) are most commonly described as being in 1 of 5 quintile bands. The bottom quintile represents the 20% of areas that are the most deprived in England; these are shaded pale yellow on the map. The top quintile represents the least deprived areas in England and is shaded dark blue.

The Index is widely used to analyse patterns of deprivation, identify areas that would benefit from special initiatives or programmes and as a tool to determine eligibility for specific funding streams.

The chart below shows the percentage of the population of the division that live in areas ranked among each of the five quintiles of deprivation, alongside the district, county and England comparators.



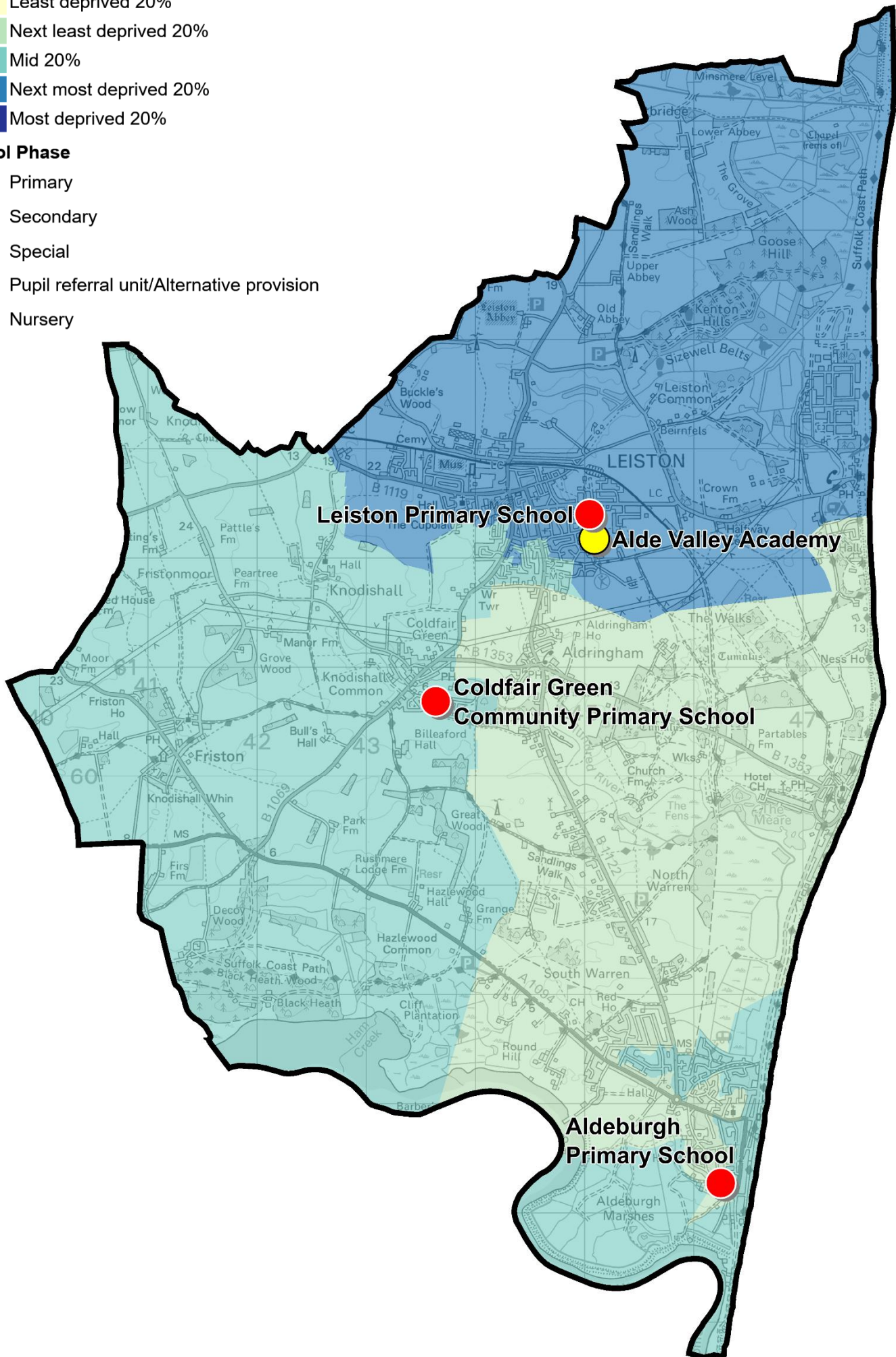
- The 2025 IMD shows that deprivation levels in Aldeburgh and Leiston are quite varied, with parts of the division in each of the three middle deprivation quintiles.
- Half of the population of the division live in areas that are ranked in the second most deprived quintile (i.e. 20-40% most deprived) in England.
- Around a fifth of Aldeburgh and Leiston's population lives in areas in the second least deprived quintile, with the remaining 30% in the middle quintile.
- No part of Aldeburgh and Leiston is ranked in either the most or least deprived quintile.
- See the map overleaf for the distribution of IMD 2025 results across the division.

IMD 2025 quintile

- Least deprived 20%
- Next least deprived 20%
- Mid 20%
- Next most deprived 20%
- Most deprived 20%

School Phase

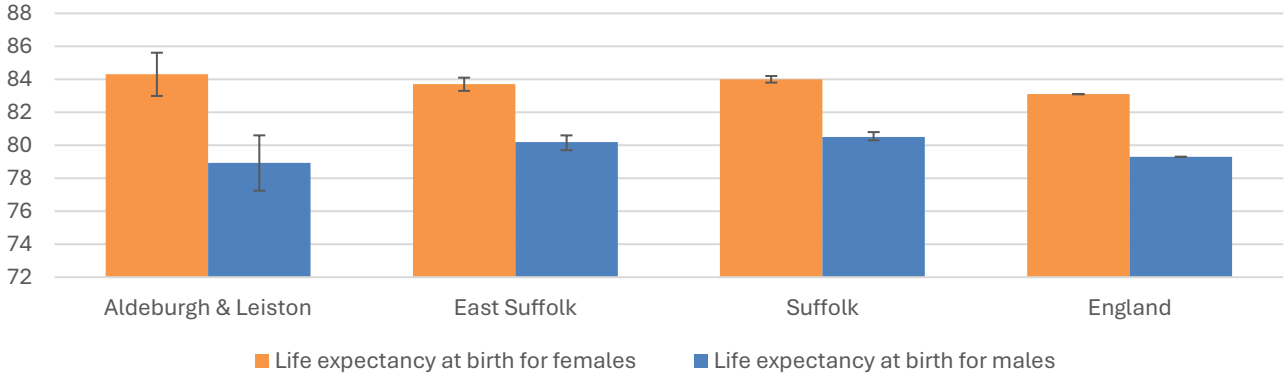
- Primary
- Secondary
- Special
- Pupil referral unit/Alternative provision
- Nursery



Health

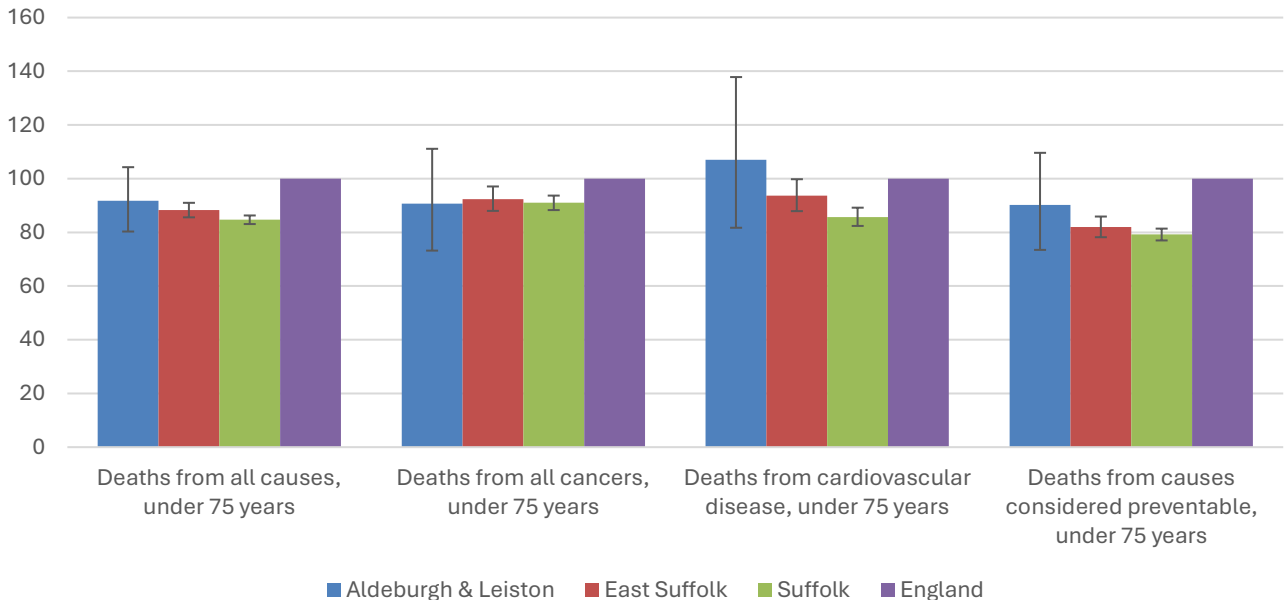
The local data used here is based on relatively small numbers. The confidence limits provide an indication of the reliability of the data. The 95% confidence intervals utilised on the chart provide a range within which there is 95% chance of the true result lying.

Life expectancy at birth



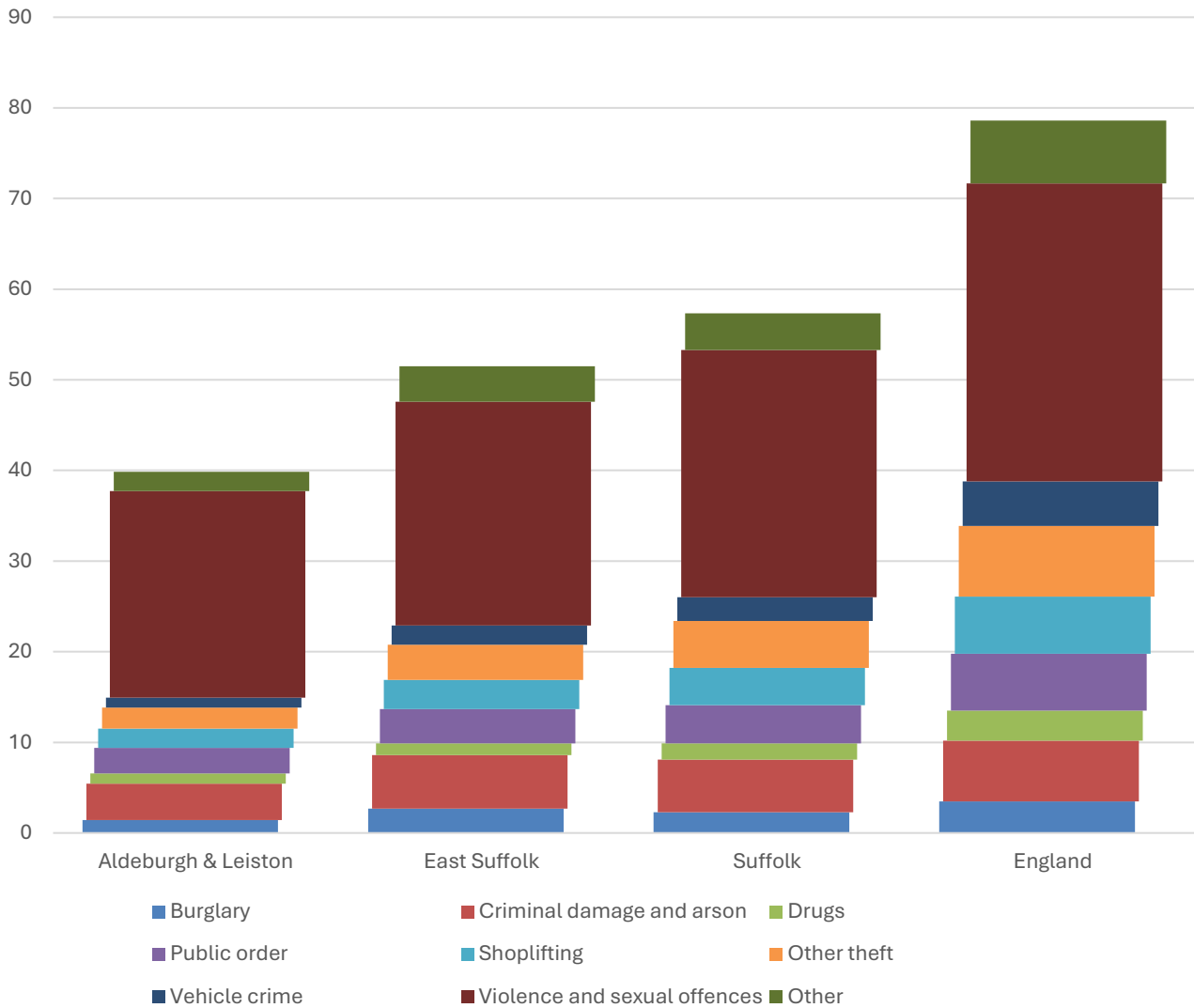
- Estimated life expectancy at birth for both females and males in Aldeburgh and Leiston is statistically similar to the East Suffolk, Suffolk and England averages.
- Current life expectancy at birth in Aldeburgh and Leiston is 84.3 for females (the England average is 83.1), and 78.9 for males (compared to 79.3 nationally).

Deaths, under 75 years, standardised mortality ratio



- Estimated standardised mortality ratios for early deaths from all causes, all cancers, and causes considered preventable in Aldeburgh and Leiston are below 100, indicating that deaths in under 75s due to these causes are lower than in England. However, these variations are not statistically significant due to the wide confidence intervals there are around the local estimates.
- The standardised mortality ratio data shown here means that for every 100 early deaths from all causes across England as a whole, there are an estimated 92 comparable deaths in Aldeburgh and Leiston.

Crime & Community Safety



- Crime levels in Aldeburgh and Leiston are below both the district and county averages, with 40 crimes per 1,000 residents in the division in the 12 months to the end of January 2026, compared to 52 in East Suffolk and 57 countywide.
- All types of crime are recorded at a lower rate in the division than the district and county average.
- By far the most common type of crime recorded during this period was violence and sexual offences, which accounted for more than half of all recorded crimes in the division.

Additional Information

Parishes in Division

Aldeburgh
 Aldringham cum Thorpe
 Friston
 Knodishall
 Leiston

Data sources

Category	Indicator	Source
Demographic Profile	Quinary population table 2024	ONS 2024 mid-year population estimates
	Population pyramid 2024	ONS 2024 mid-year population estimates
	Ethnicity 2021	ONS 2021 Census
Economy	Employment by broad industrial sector 2024	ONS Business Register and Employment Survey via NOMIS
Labour market	Claimant count: The number of people claiming Jobseeker's Allowance plus those who claim Universal Credit who are out of work (% 16-64 population) January 2021-February 2026	DWP via NOMIS
Education	School information and attainment 2023-2025	Suffolk County Council CYP iHub
	% 16-17-year-olds NEET (Not in Employment, Education or Training) March 2021 to February 2026	Suffolk County Council CYP iHub via the Suffolk Observatory
Deprivation	Index of Multiple Deprivation 2025	Ministry of Housing, Communities and Local Government
Health	Life expectancy at birth 2016-2020 (2018-2020 for comparator areas)	Office for Health Improvement and Disparities
Health	Standardised mortality ratio for deaths from all causes, cancer, cardiovascular disease, and from causes considered preventable (under 75 years), 2016-2020 (2019-2023 for comparator areas). The standardised mortality ratio is the ratio of observed deaths in the study group to expected deaths in the general population	Office for Health Improvement and Disparities
Community Safety	Recorded crime rate per 1,000 resident population February 2025 to January 2026	Data.police.uk via the Suffolk Observatory

For more data and information about Aldeburgh and Leiston Electoral Division, see the Suffolk Observatory www.suffolkobservatory.info

