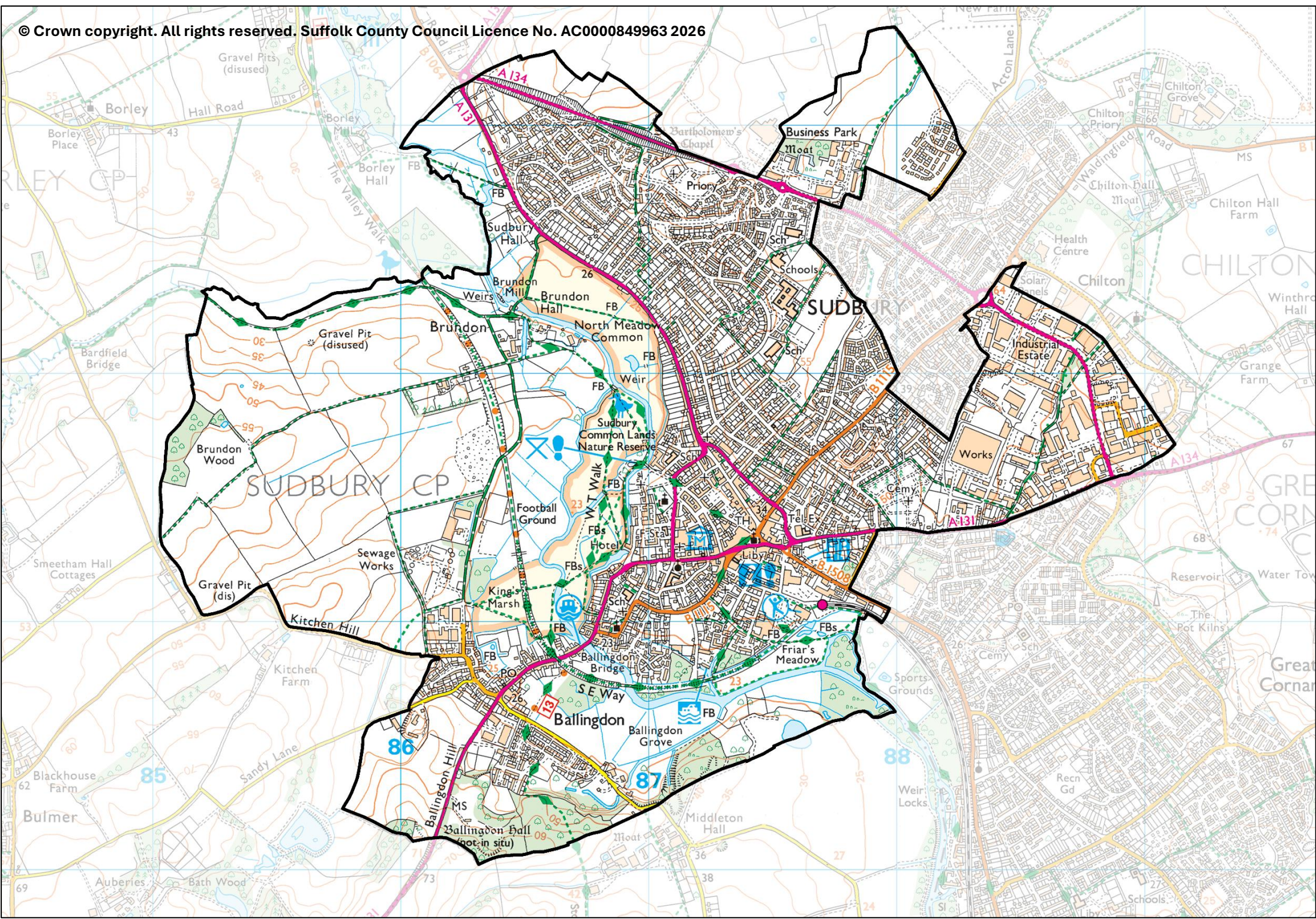


Sudbury West

County Electoral Division profile
May 2026

This division comprises Sudbury North West and Sudbury South West Wards in their entirety, and part of Sudbury South East Ward





Contents

- Demographic Profile: Age & Ethnicity
- Economy and Labour Market
- Schools & NEET
- Index of Multiple Deprivation
- Health
- Crime & Community Safety
- Additional Information
- Data Sources

Electoral Division Profiles: an introduction

These profiles have been produced to support elected members, constituents and other interested parties in understanding the demographic, economic, social and educational profile of their neighbourhoods. We have used the latest data available at the time of publication.

Much more data is available from national and local sources than is captured here, but it is hoped that the profile will be a useful starting point for discussion, where local knowledge and experience can be used to flesh out and illuminate the information presented here.

The profile can be used to help look at some fundamental questions e.g.

- Does the age profile of the population match or differ from the national profile?
- Is there evidence of the ageing profile of the county in all the wards in the Division or just some?
- How diverse is the community in terms of ethnicity?
- What is the impact of deprivation on families and residents?
- Does there seem to be a link between deprivation and school performance?
- What is the breakdown of employment sectors in the area?
- Is it a relatively healthy area compared to the rest of the district or county?
- What sort of crime is prevalent in the community?

A vast amount of additional data is available on the **Suffolk Observatory**

www.suffolkobservatory.info

The Suffolk Observatory is a free online resource that contains all Suffolk's vital statistics; it is the one-stop-shop for information and intelligence about Suffolk. Through data, reports and maps, the Suffolk Observatory provides a comprehensive picture of the County. It is a great source for useful facts and figures that can be used for writing reports and presentations, informing strategic and business planning, preparing funding applications or supporting academic research. Data is presented around the key themes of population, children and young people, health and social care, housing, crime and community safety, deprivation, economy and employment and environment. All areas of the county are covered, right down to district, electoral division, ward and parish level, with information easily accessible in a variety of formats. You can also build your own reports for custom areas.

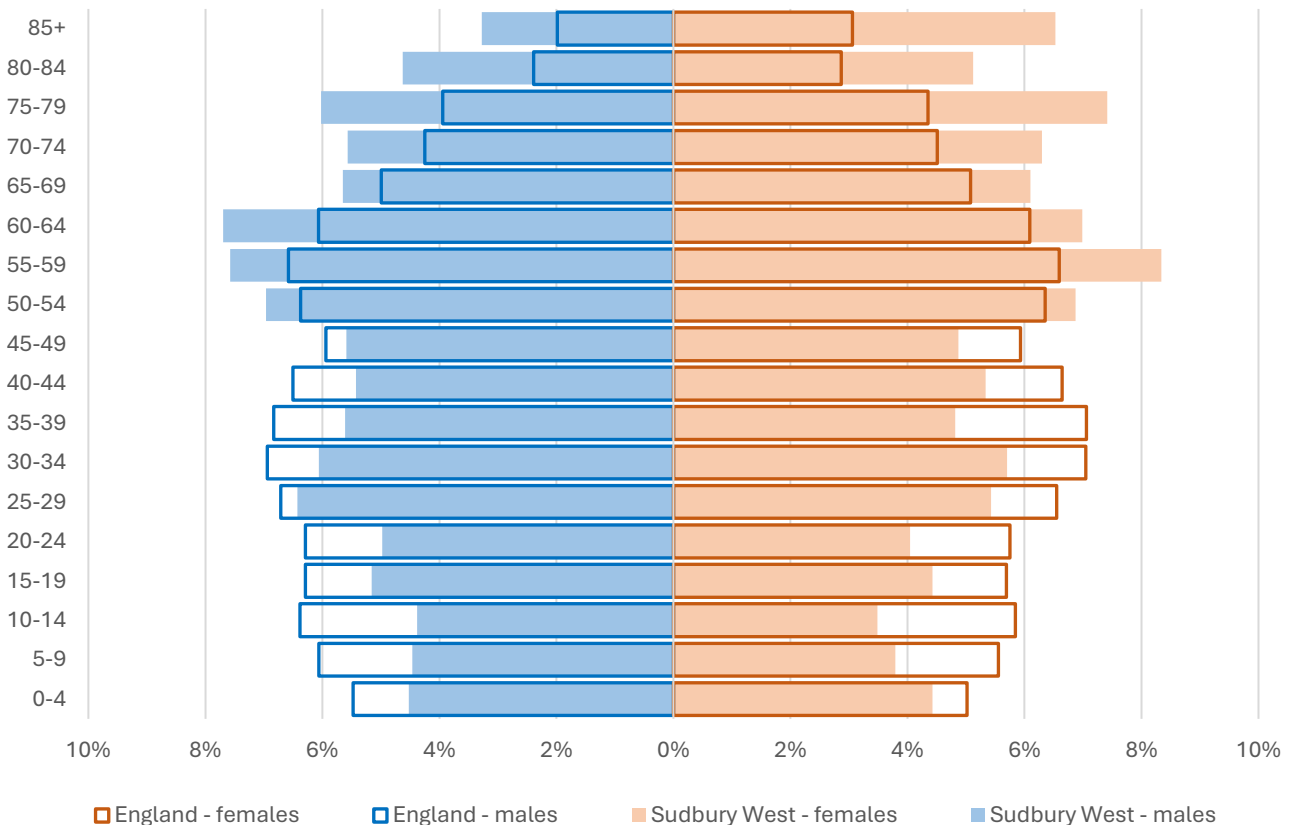
Technical Notes:

1. Where electoral divisions do not exactly match the boundaries at which the data is available (e.g. ward, Output Area or Lower Super Output Area), we have adopted a "best-fit" approach to produce a dataset.
2. District, county and national level data is provided where possible to provide a context for comparisons.

Demographic Profile - Age

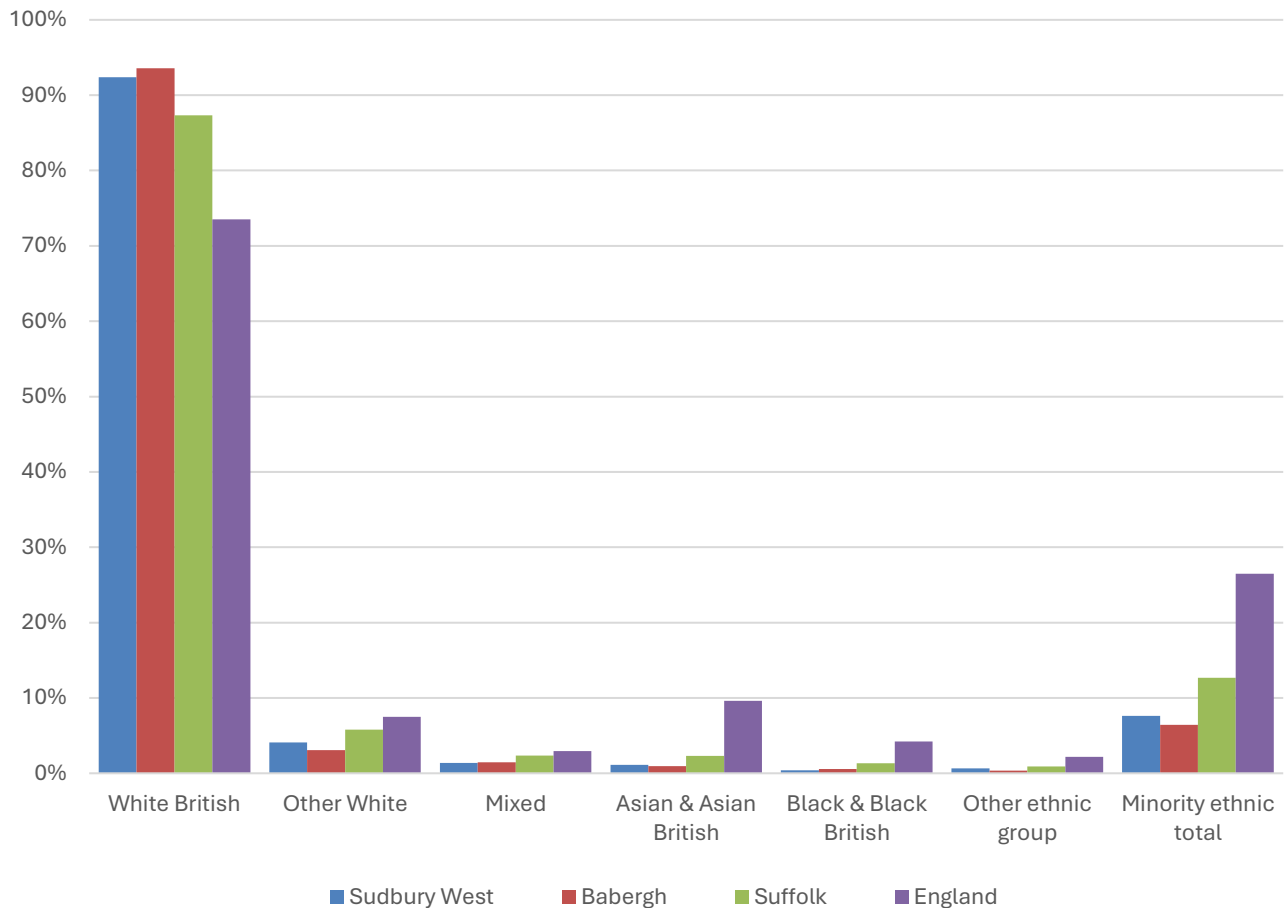
In mid-2024, the estimated population of Sudbury West stood at 10,077, an increase of 6.1% over the past decade. The age structure of the component wards and the division as a whole is set out below.

	Sudbury West Division	Sudbury North West Ward	Sudbury South West Ward	Sudbury South East Ward
All Ages	10,077	5,618	2,965	1,494
0-4	451	257	134	60
5-9	415	245	124	46
10-14	395	245	99	51
15-19	482	295	127	60
20-24	453	269	127	57
25-29	596	320	194	82
30-34	592	338	167	87
35-39	524	317	126	81
40-44	542	321	165	56
45-49	526	327	124	75
50-54	697	380	201	116
55-59	803	459	225	119
60-64	739	415	218	106
65-69	593	322	189	82
70-74	599	316	189	94
75-79	679	329	237	113
80-84	492	228	152	112
85+	499	235	167	97



- The age pyramid for Sudbury West division shows a higher proportion of people aged 50 and over than in England as a whole.
- The most common age group in the division is 55-59-year-olds (8% of the population of the division across males and females), followed by 60-64-year-olds (7.3%), and 50-54-year-olds (6.9%).
- Just over 28% of the population of Sudbury West is of retirement age.
- There is a lower-than-average proportion of children and young people, and adults aged under 50

Demographic Profile - Ethnicity

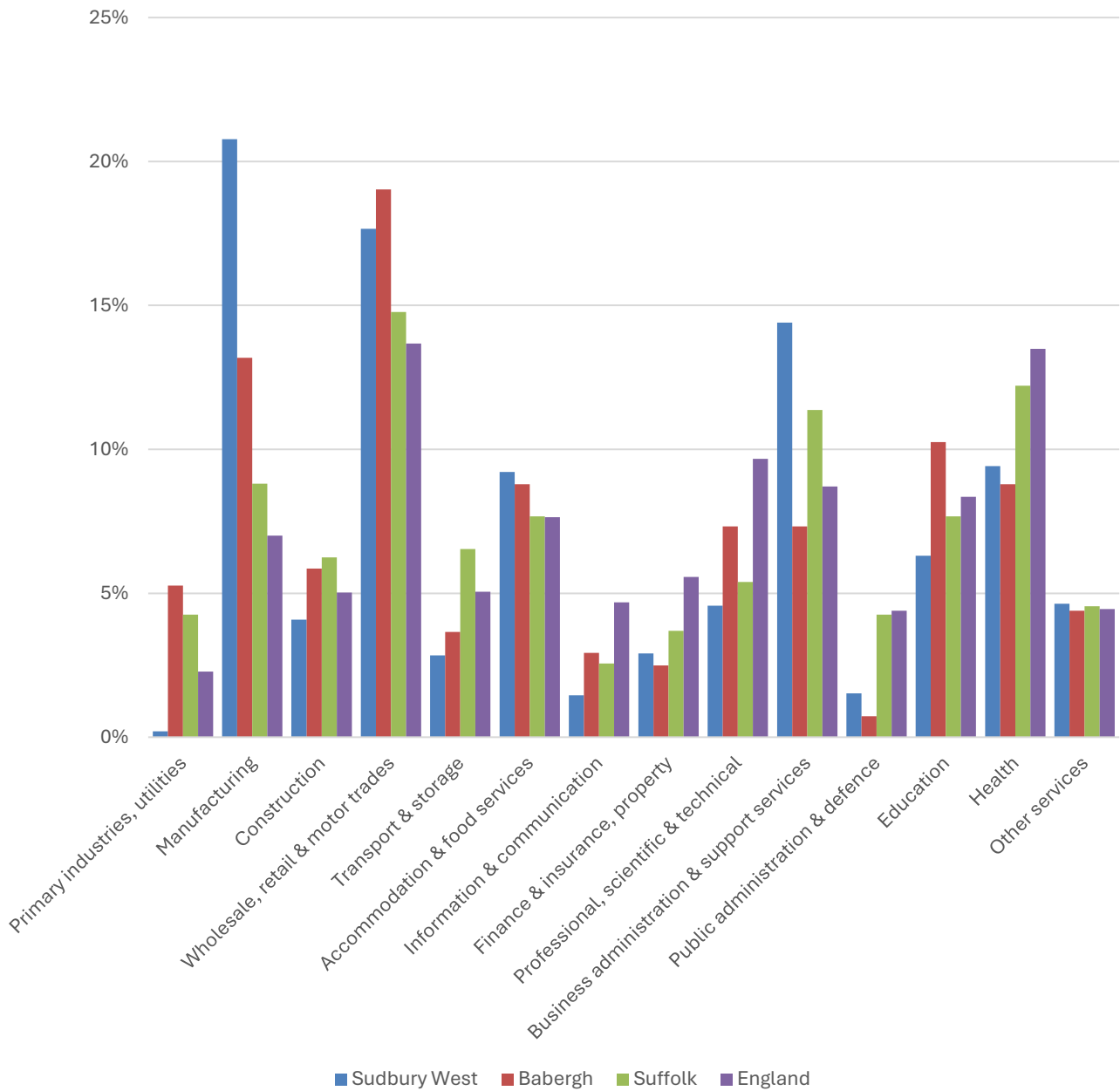


- According to the latest data (2021 Census), 92.4% of the population of Sudbury West are White British.
- There are 736 (7.6%) people of minority ethnic origin in the division, a slightly larger proportion than in Babergh overall, but below the Suffolk average of 12.6%.
- Sudbury West has a similar diversity profile to Babergh district, and lower proportions of all minority ethnic groups than Suffolk as a whole.

	All people		White British		Other White		Mixed		Asian and Asian British		Black and Black British		Other Ethnic Group		Total minority ethnic population	
	Count	%	Count	%	Count	%	Count	%	Count	%	Count	%	Count	%	Count	%
Sudbury West	9,671		8,935	92.4	396	4.1	132	1.4	110	1.1	37	0.4	61	0.6	736	7.6
Babergh	92,342		86,418	93.6	2,851	3.1	1,351	1.5	875	0.9	503	0.5	344	0.4	5,924	6.4
Suffolk	760,687		664,205	87.3	44,066	5.8	17,807	2.3	17,483	2.3	10,168	1.3	6,958	0.9	96,482	12.7
England				73.5		7.5		3.0		9.6		4.2		2.2		26.5

Economy

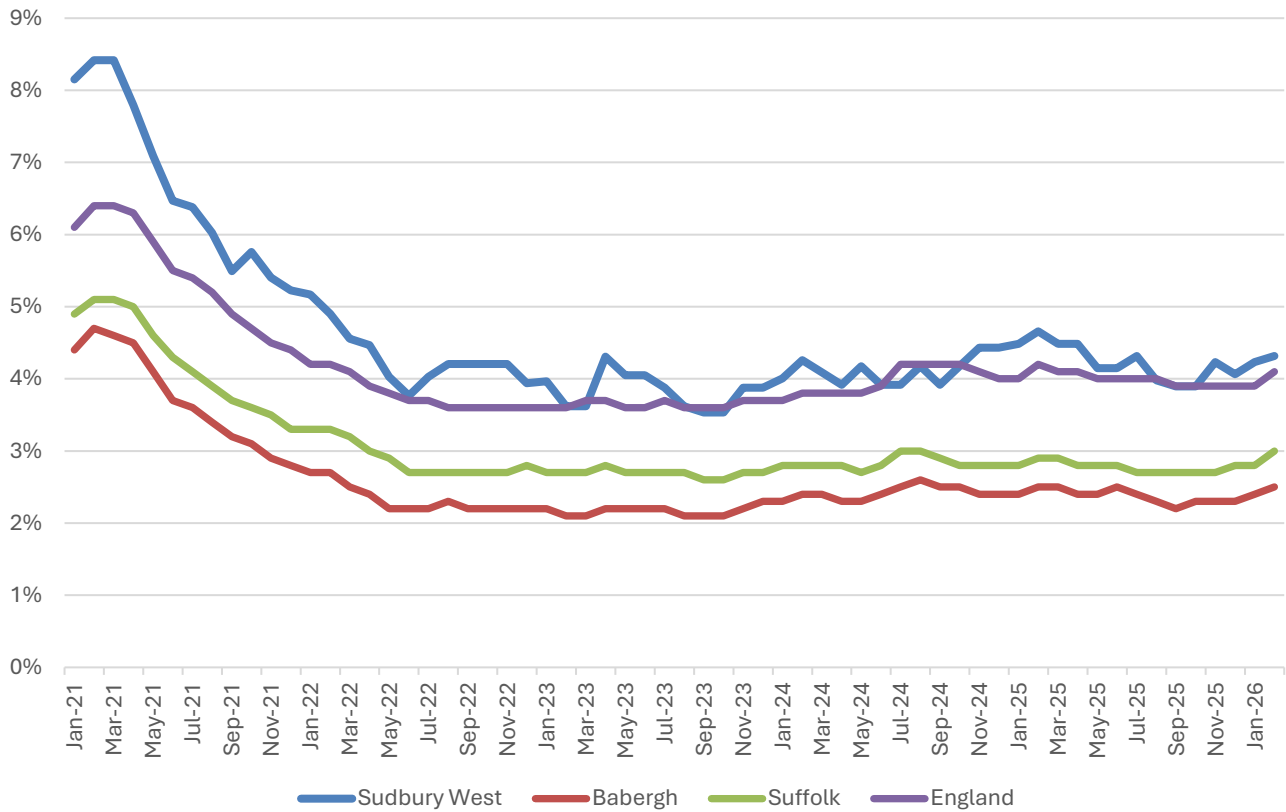
There are around 7,200 people employed in Sudbury West.



- Manufacturing, wholesale, retail and motor trades and business administration and support services are the largest sectors in Sudbury West.
- In total, these three sectors provide just over half of jobs in the division.
- Manufacturing is a particular specialism of the area, as it accounts for more than double the proportion of local employment than it does across Suffolk as a whole.
- Accommodation and food services, health, and education also support between 5% and 10% of local jobs in Sudbury West.

Labour Market

Out-of-work benefit claimant rate



- In common with Babergh, Suffolk and England as a whole, Sudbury West saw a steady decline in the proportion of the working age population claiming of out-of-work benefits during 2021 following a peak during the COVID-19 pandemic.
- Since then, the claimant rate in the division has been stable at around 4-4.5%.
- The claimant rate in Sudbury West is consistently similar to or slightly above the England figure, and around 1 and 1.5 percentage points above the county and district benchmarks respectively.

Schools

School Information

Schools in the Division

Name	Phase	Academy Status	No. pupils	Average cohort size at:			
				Foundation Stage (age 4-7)	KS2 (age 7-11)	KS4 (age 14-16)	KS5 (age 16-18)
St Gregory CEVCP School	Primary	LA	227	28	32		
St Joseph's Roman Catholic Primary School	Primary	LA	137	19	22		
Tudor CofE Primary School, Sudbury	Primary	AS	268	37	30		
Woodhall Primary School	Primary	AS	448	54	61		
Ormiston Sudbury Academy	Secondary	AS	710			125	2
Hillside Special School	Special	LA	89	3	10	4	

Academy Status key: AS = Academy Sponsored, AC = Academy Converter, LA = LA Maintained, F = Free

Ofsted information

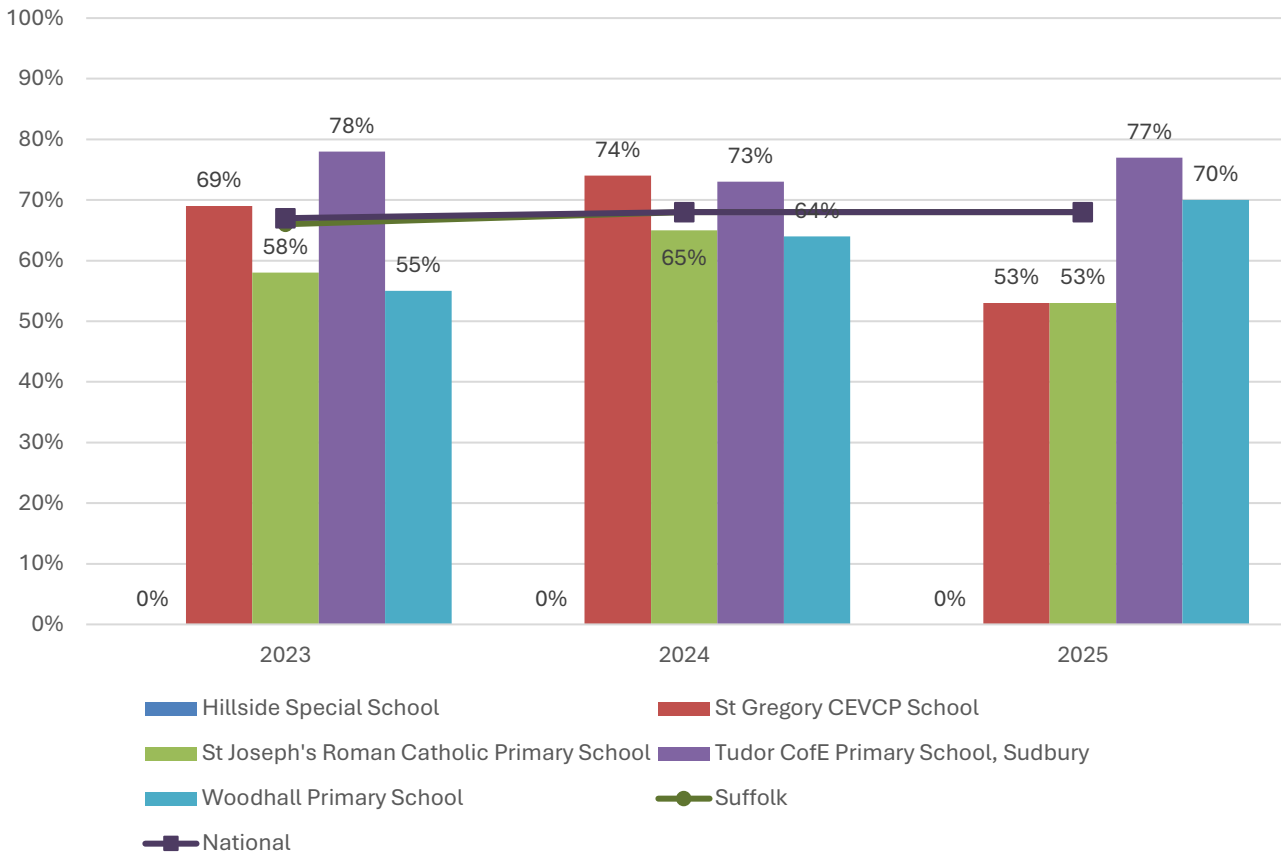
Name	Overall effectiveness	Effectiveness of leadership and management	Behaviour and attitudes	Personal development	Early years provision (if applicable)	Quality of education	Last inspection date
St Gregory CEVCP School	2	2	9	9	2	9	21/04/2017
St Joseph's Roman Catholic Primary School	2	2	9	9	2	9	08/06/2017
Tudor CofE Primary School	2	2	9	9	1	9	10/05/2018
Woodhall Primary School	2	2	2	1	2	2	03/12/2019
Ormiston Sudbury Academy	3	3	2	2	9	3	12/09/2023
Hillside Special School	5	2	1	1	9	2	24/06/2025

Code	Judgement	Code	Judgement
0	Insufficient evidence	SM	Special measures
1	Outstanding	8	Does not apply
2	Good	9	No judgement
3	Requires improvement	Null	No data available
4	Inadequate	Not judged	Not judged
SWK	Serious weaknesses	5	No overall grade

School Attainment

Foundation Stage Profile (reception)

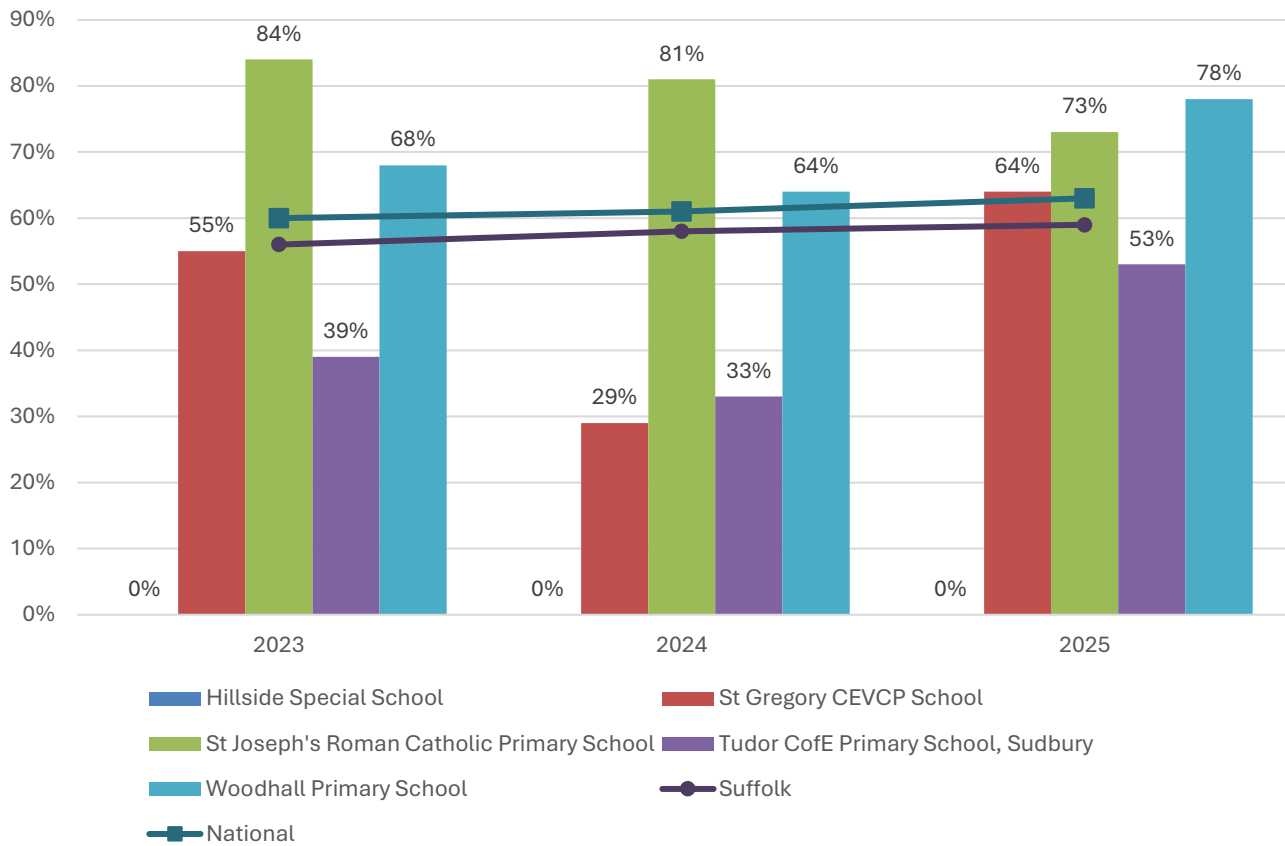
% pupils achieving Good Level of Development (GLD)



- Foundation Stage attainment has been consistently above the national average at Tudor Church of England Primary School over the last three years of available data.
- The percentage of pupils achieving a Good Level of Development (GLD) at Foundation Stage (FS) has been below average from 2023 to 2025 at St Joseph's Roman Catholic Primary School.
- Other schools in the division have seen more mixed attainment levels at Foundation Stage.
- At St Gregory CEVCP School, 74% of pupils achieved a GLD in 2024, but the figure dropped to 53% in 2025.

Key Stage 2 (age 11)

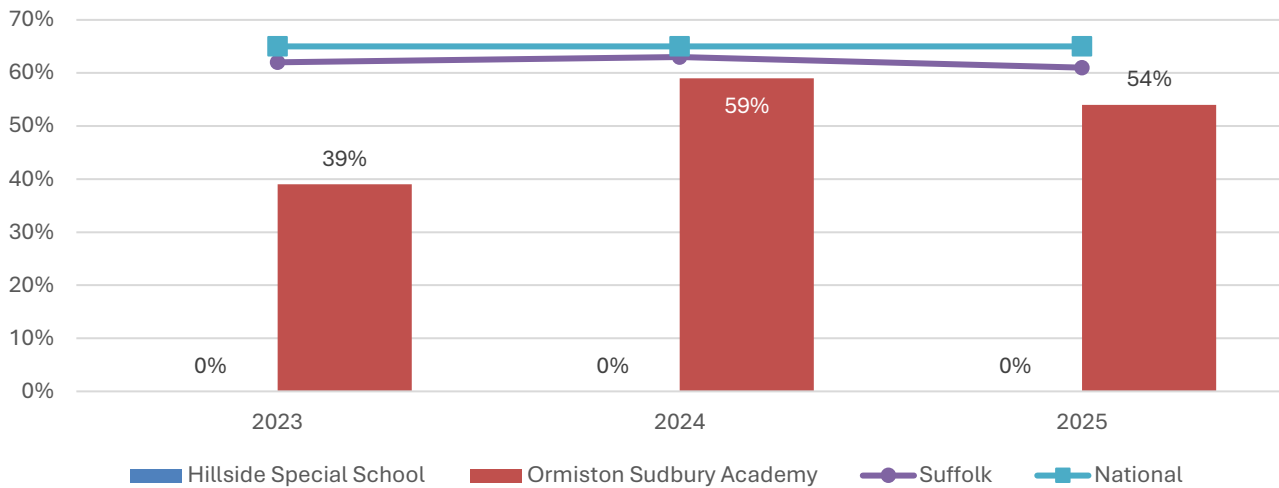
% pupils achieving the Expected Level or better in Reading, Writing and Mathematics



- In contrast to the Foundation Stage data, Key Stage 2 attainment at St Joseph's Roman Catholic Primary School has been consistently well above the county and national average over the past three years of data.
- The percentage of pupils achieving the expected level or better in reading, writing and mathematics was also above average throughout this period at Woodhall Primary School.
- Attainment was consistently below average at Tudor Church of England Primary School.

Key Stage 4 (GCSE) (age 16)

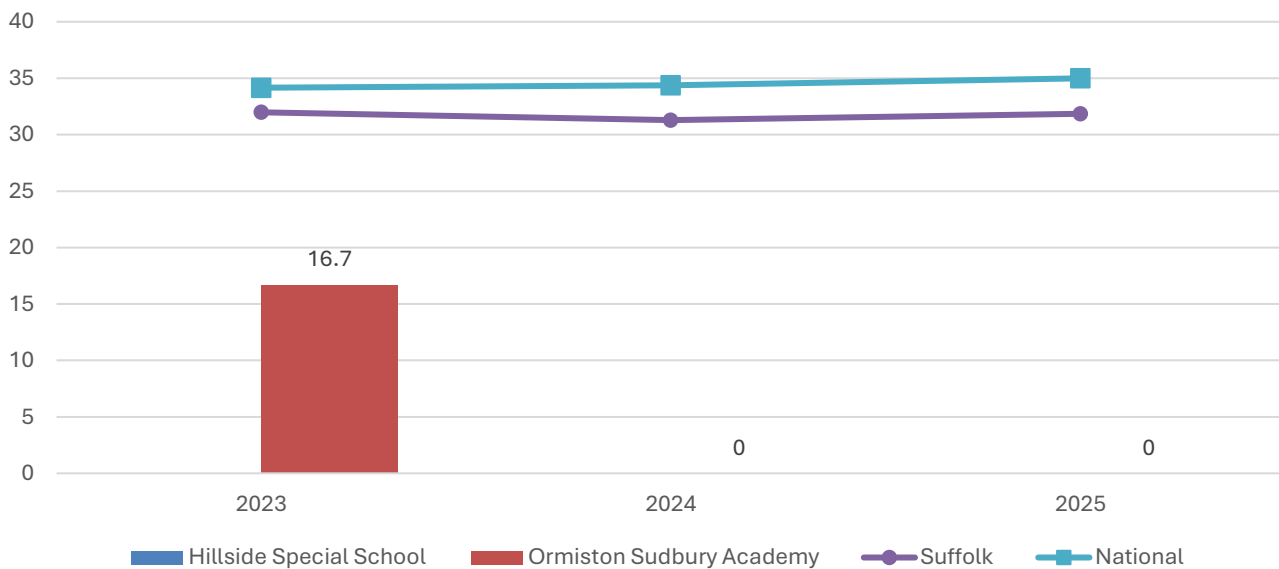
% pupils achieving level 4-9 in English and Mathematics



- Key Stage 4 attainment at Ormiston Sudbury Academy has been consistently below average throughout the last three years.

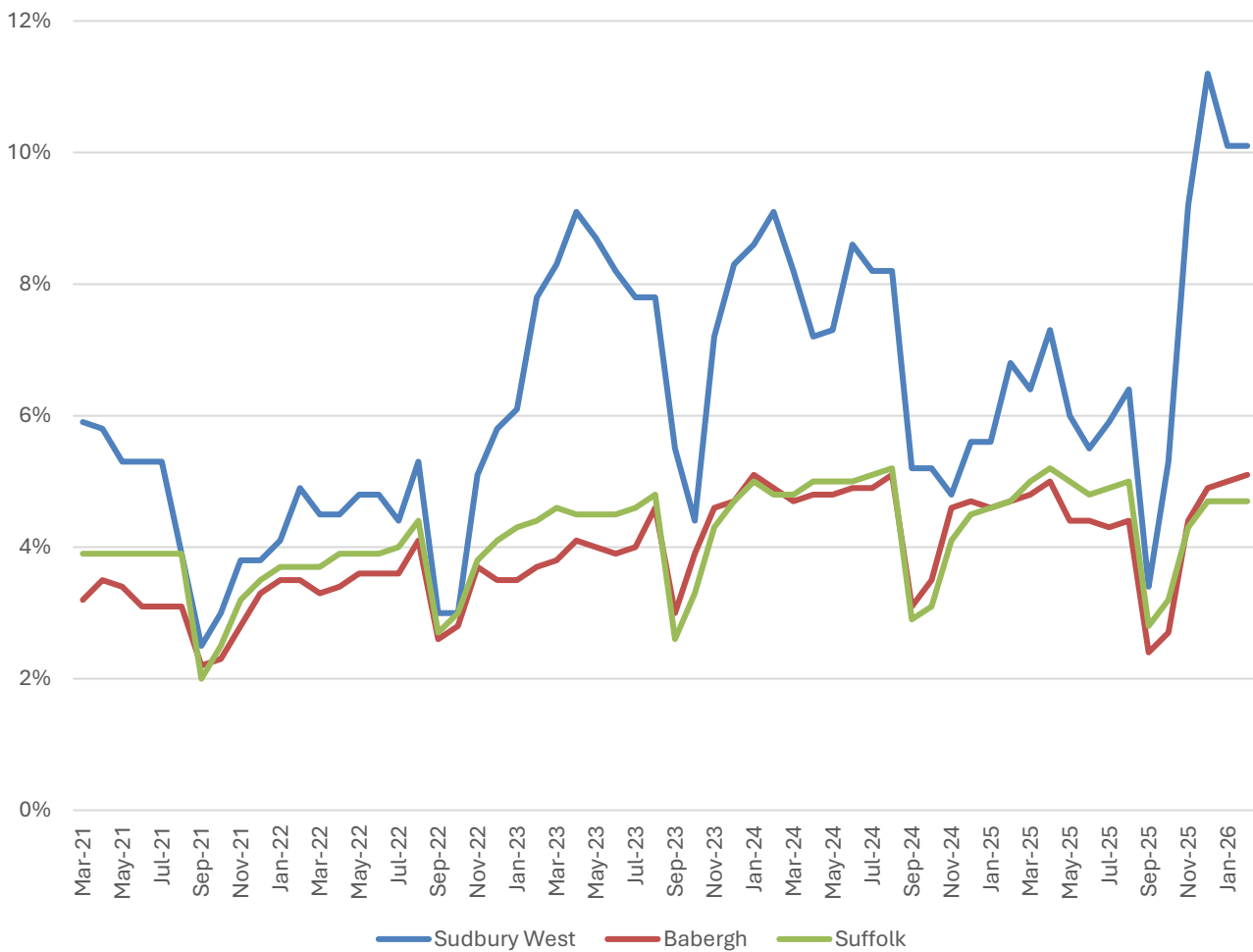
Key Stage 5 (A level) (age 18)

Average A Level Points per entry



- There were no pupils examined at Key Stage 5 at Ormiston Sudbury Academy beyond 2023.
- In 2023, only two pupils were examined at A level, so the sample size for the low A Level Points per entry at the school is very small.

NEET % (Not in Education, Employment or Training)



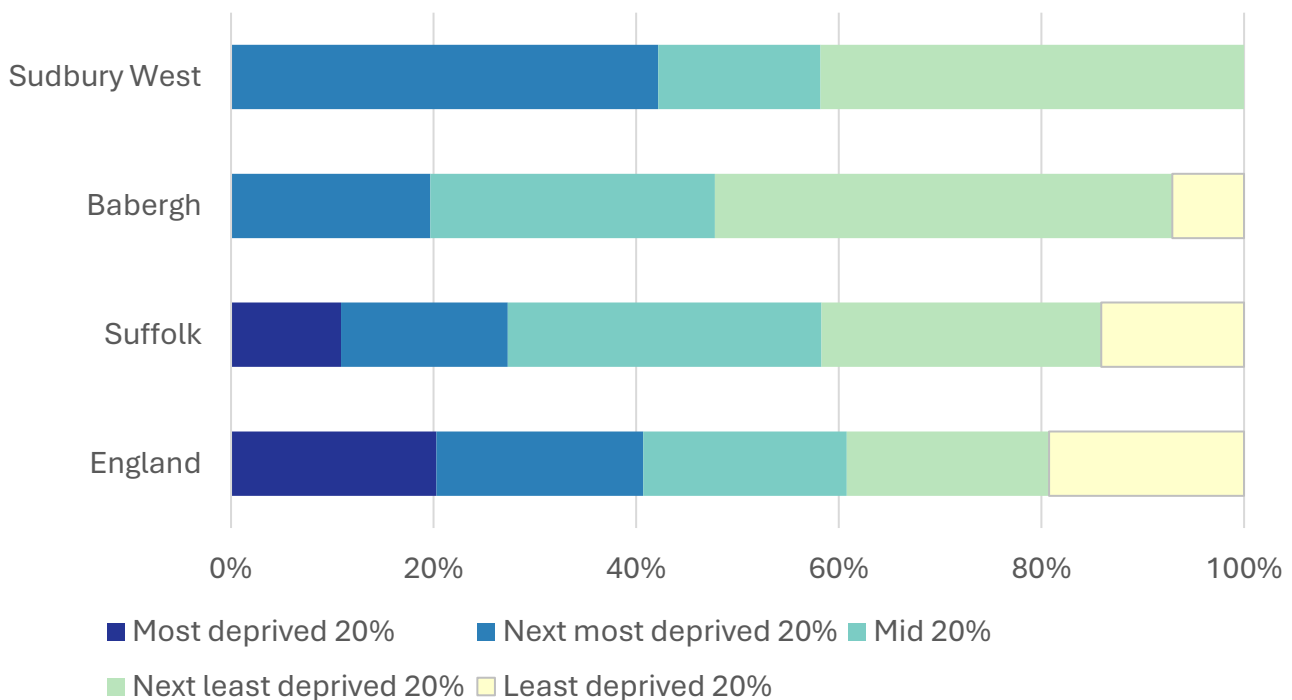
- In February 2026, 10% of 16–17-year-olds in Sudbury West were classified as NEET (not in education, employment or training).
- NEET levels fluctuate considerably according to the time of year and due to small numbers of 16-17-year-olds in the division, typically being at their lowest at the beginning of a new school year.
- In Sudbury West, NEET levels are generally markedly above the district and county levels.

Index of Multiple Deprivation (IMD) 2025 (see map overleaf)

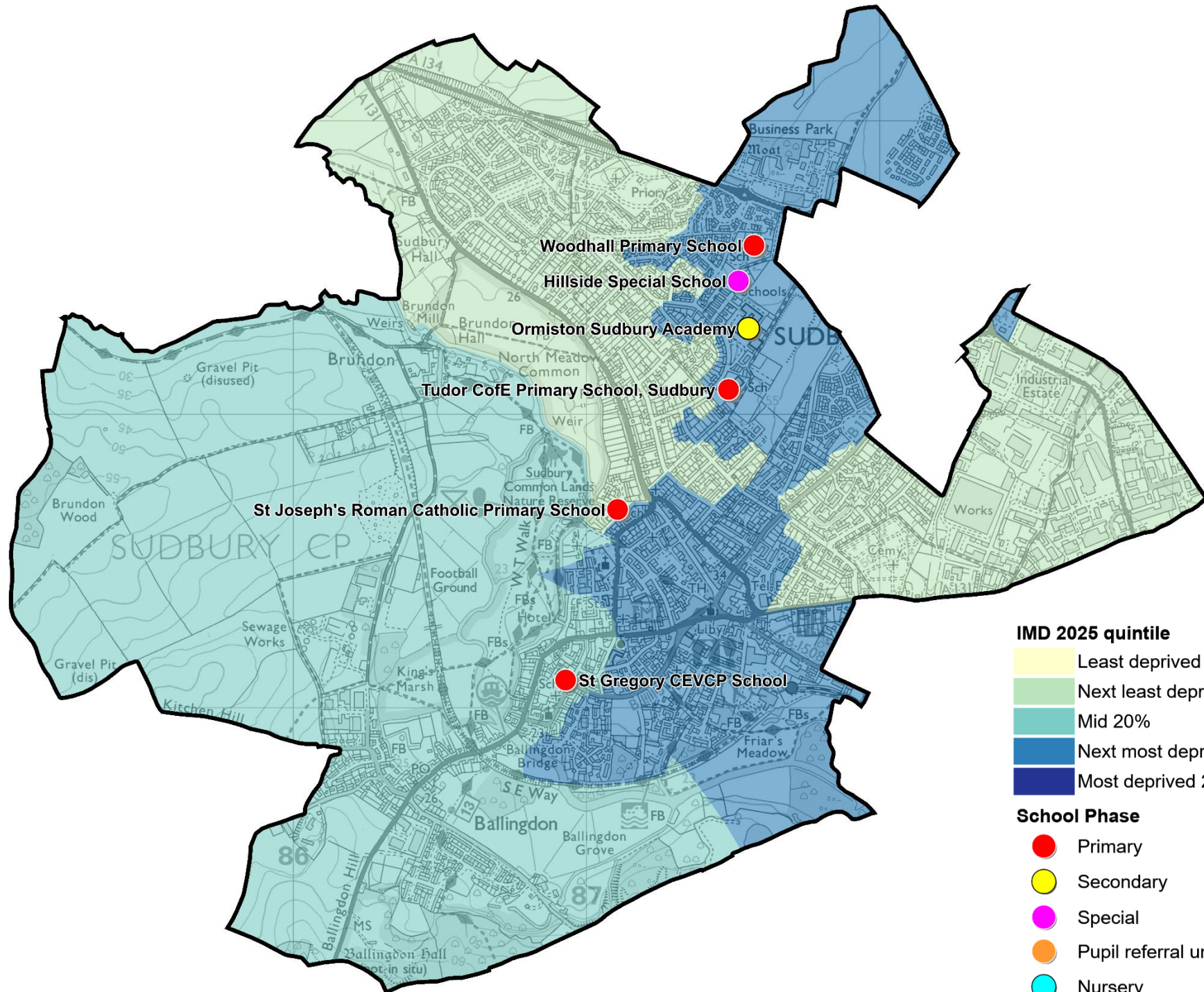
The IMD combines a number of indicators, chosen to cover a range of economic, social and housing issues, into a single deprivation score for each small area in England. This allows each area to be ranked relative to one another according to their level of deprivation. Small areas (Lower Super Output Areas, average population 1,700) are most commonly described as being in 1 of 5 quintile bands. The bottom quintile represents the 20% of areas that are the most deprived in England; these are shaded pale yellow on the map. The top quintile represents the least deprived areas in England and is shaded dark blue.

The Index is widely used to analyse patterns of deprivation, identify areas that would benefit from special initiatives or programmes and as a tool to determine eligibility for specific funding streams.

The chart below shows the percentage of the population of the division that live in areas ranked among each of the five quintiles of deprivation, alongside the district, county and England comparators.



- The 2025 IMD shows that deprivation levels in Sudbury West are quite varied, but the entire division is ranked in the middle three IMD quintiles.
- Around 16% of the population of Sudbury West live in areas that are ranked in the middle quintile of deprivation.
- The remaining population of the division is split evenly between the second most deprived (i.e. 20-40% most deprived) and second least deprived quintiles.
- No part of Sudbury West is ranked in the most deprived or least deprived quintiles.
- Sudbury West therefore has higher relative deprivation levels than Babergh district as a whole, where around half of the population live in LSOAs that are among the least deprived two-fifths in England.
- See the map overleaf for the distribution of IMD 2025 results across the division.



IMD 2025 quintile

- Least deprived 20%
- Next least deprived 20%
- Mid 20%
- Next most deprived 20%
- Most deprived 20%

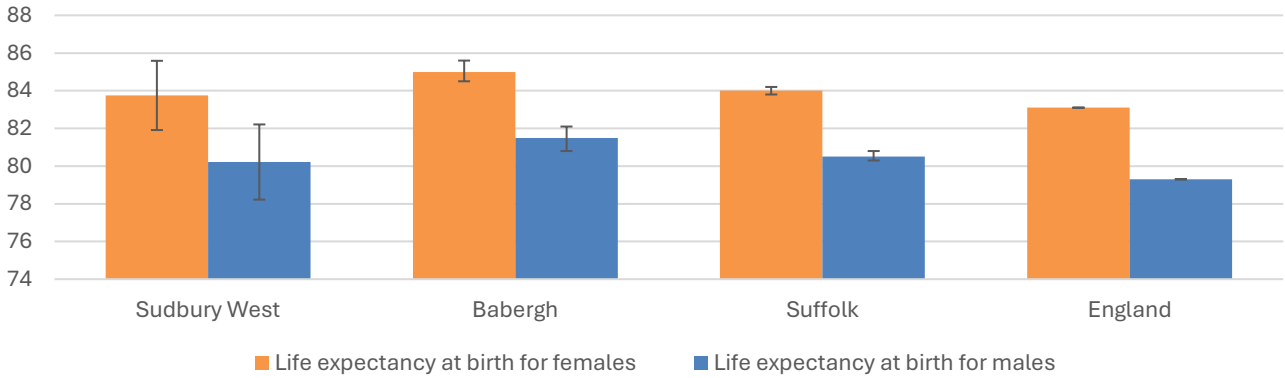
School Phase

- Primary
- Secondary
- Special
- Pupil referral unit/Alternative provision
- Nursery

Health

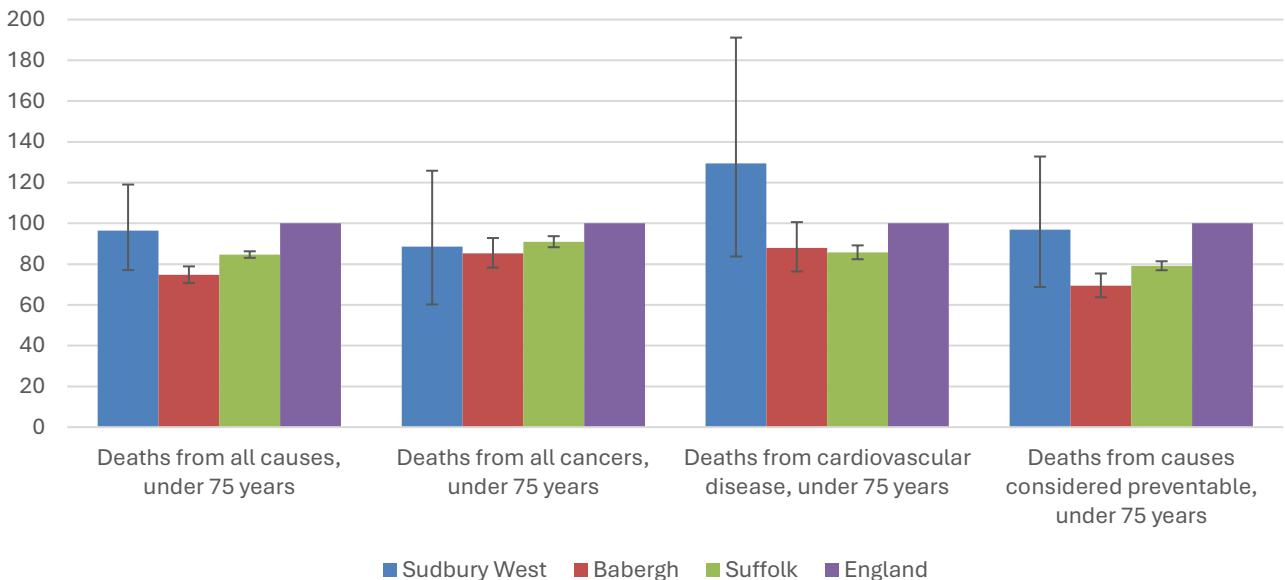
The local data used here is based on relatively small numbers. The confidence limits provide an indication of the reliability of the data. The 95% confidence intervals utilised on the chart provide a range within which there is 95% chance of the true result lying.

Life expectancy at birth



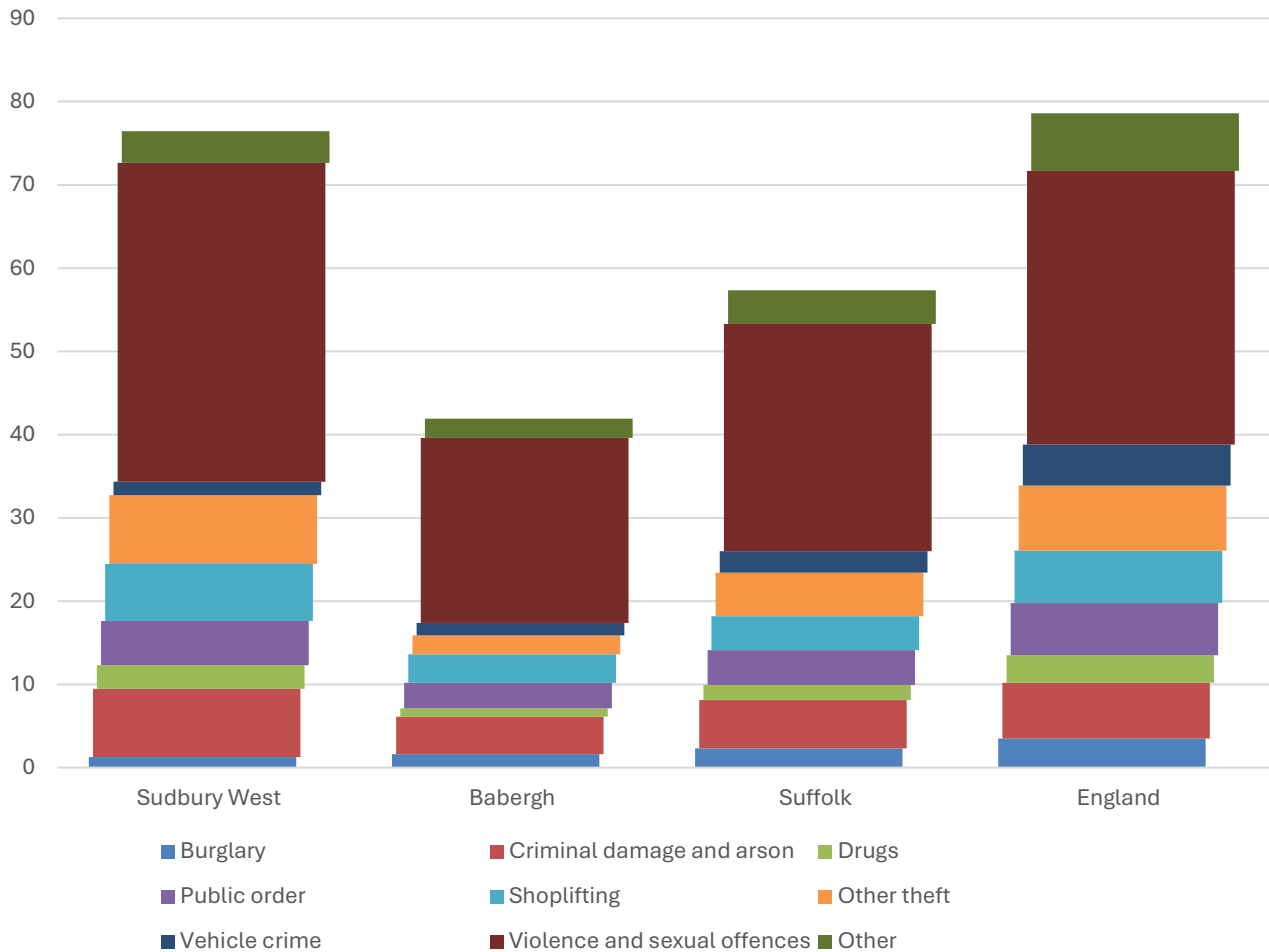
- Estimated life expectancy at birth for both females and males in Sudbury West are statistically similar to the Babergh, Suffolk and national figures.
- The latest estimates for life expectancy at birth for females in Sudbury West is 83.8 (the England average is 83.1), while for males it is 80.2 (compared to 79.3 nationally).

Deaths, under 75 years, standardised mortality ratio



- Estimated standardised mortality ratios for early deaths from all causes, all cancers, and causes considered preventable in Sudbury West are below 100, indicating that deaths in under 75s due to these causes are lower than in England.
- Confidence intervals around these estimates are wide for local data, however, and these differences are not statistically significant.
- The standardised mortality ratio data shown here means that for every 100 early deaths from all causes across England as a whole, there are an estimated 96 comparable deaths in Sudbury West.

Crime & Community Safety



- Crime levels in Sudbury West are high compared to both the district and county averages, with 76 crimes per 1,000 residents in the division in the 12 months to the end of January 2026, compared to 42 in Babergh and 57 countywide.
- The crime rate in the division is similar to the national average of 79 crimes per 1,000 population.
- All types of crime occur at a higher rate in the division than the district and county average with the exception of vehicle crime, which is recorded proportionately less frequently than across Suffolk as a whole.
- By far the most common type of crime recorded during this period was violence and sexual offences, which accounted for exactly half of all recorded crimes in the division.

Additional Information

Parishes in Division

Sudbury (part)

Data sources

Category	Indicator	Source
Demographic Profile	Quinary population table 2024	ONS 2024 mid-year population estimates
	Population pyramid 2024	ONS 2024 mid-year population estimates
	Ethnicity 2021	ONS 2021 Census
Economy	Employment by broad industrial sector 2024	ONS Business Register and Employment Survey via NOMIS
Labour market	Claimant count: The number of people claiming Jobseeker's Allowance plus those who claim Universal Credit who are out of work (% 16-64 population) January 2021-February 2026	DWP via NOMIS
Education	School information and attainment 2023-2025	Suffolk County Council CYP iHub
	% 16-17-year-olds NEET (Not in Employment, Education or Training) March 2021 to February 2026	Suffolk County Council CYP iHub via the Suffolk Observatory
Deprivation	Index of Multiple Deprivation 2025	Ministry of Housing, Communities and Local Government
Health	Life expectancy at birth 2016-2020 (2018-2020 for comparator areas)	Office for Health Improvement and Disparities
Health	Standardised mortality ratio for deaths from all causes, cancer, cardiovascular disease, and from causes considered preventable (under 75 years), 2016-2020 (2019-2023 for comparator areas). The standardised mortality ratio is the ratio of observed deaths in the study group to expected deaths in the general population	Office for Health Improvement and Disparities
Community Safety	Recorded crime rate per 1,000 resident population February 2025 to January 2026	Data.police.uk via the Suffolk Observatory

For more data and information about Sudbury West Electoral Division, see the Suffolk Observatory www.suffolkobservatory.info

