

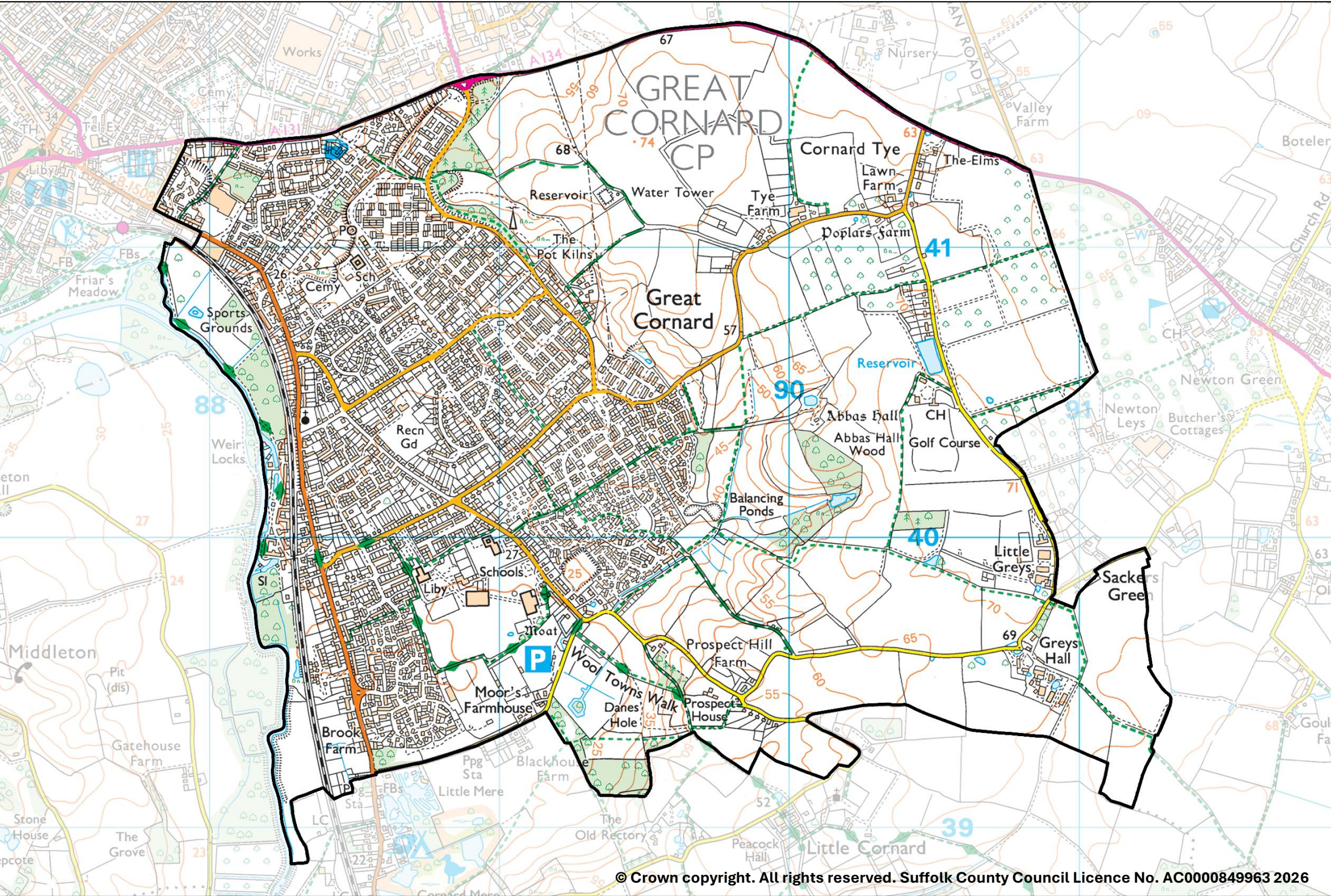
Cornard & Sudbury East

County Electoral Division profile

May 2026

This division comprises Great Cornard Ward in its entirety, and part of Sudbury South East Ward





Contents

- Demographic Profile: Age & Ethnicity
- Economy and Labour Market
- Schools & NEET
- Index of Multiple Deprivation
- Health
- Crime & Community Safety
- Additional Information
- Data Sources

Electoral Division Profiles: an introduction

These profiles have been produced to support elected members, constituents and other interested parties in understanding the demographic, economic, social and educational profile of their neighbourhoods. We have used the latest data available at the time of publication.

Much more data is available from national and local sources than is captured here, but it is hoped that the profile will be a useful starting point for discussion, where local knowledge and experience can be used to flesh out and illuminate the information presented here.

The profile can be used to help look at some fundamental questions e.g.

- Does the age profile of the population match or differ from the national profile?
- Is there evidence of the ageing profile of the county in all the wards in the Division or just some?
- How diverse is the community in terms of ethnicity?
- What is the impact of deprivation on families and residents?
- Does there seem to be a link between deprivation and school performance?
- What is the breakdown of employment sectors in the area?
- Is it a relatively healthy area compared to the rest of the district or county?
- What sort of crime is prevalent in the community?

A vast amount of additional data is available on the **Suffolk Observatory**

www.suffolkobservatory.info

The Suffolk Observatory is a free online resource that contains all Suffolk's vital statistics; it is the one-stop-shop for information and intelligence about Suffolk. Through data, reports and maps, the Suffolk Observatory provides a comprehensive picture of the County. It is a great source for useful facts and figures that can be used for writing reports and presentations, informing strategic and business planning, preparing funding applications or supporting academic research. Data is presented around the key themes of population, children and young people, health and social care, housing, crime and community safety, deprivation, economy and employment and environment. All areas of the county are covered, right down to district, electoral division, ward and parish level, with information easily accessible in a variety of formats. You can also build your own reports for custom areas.

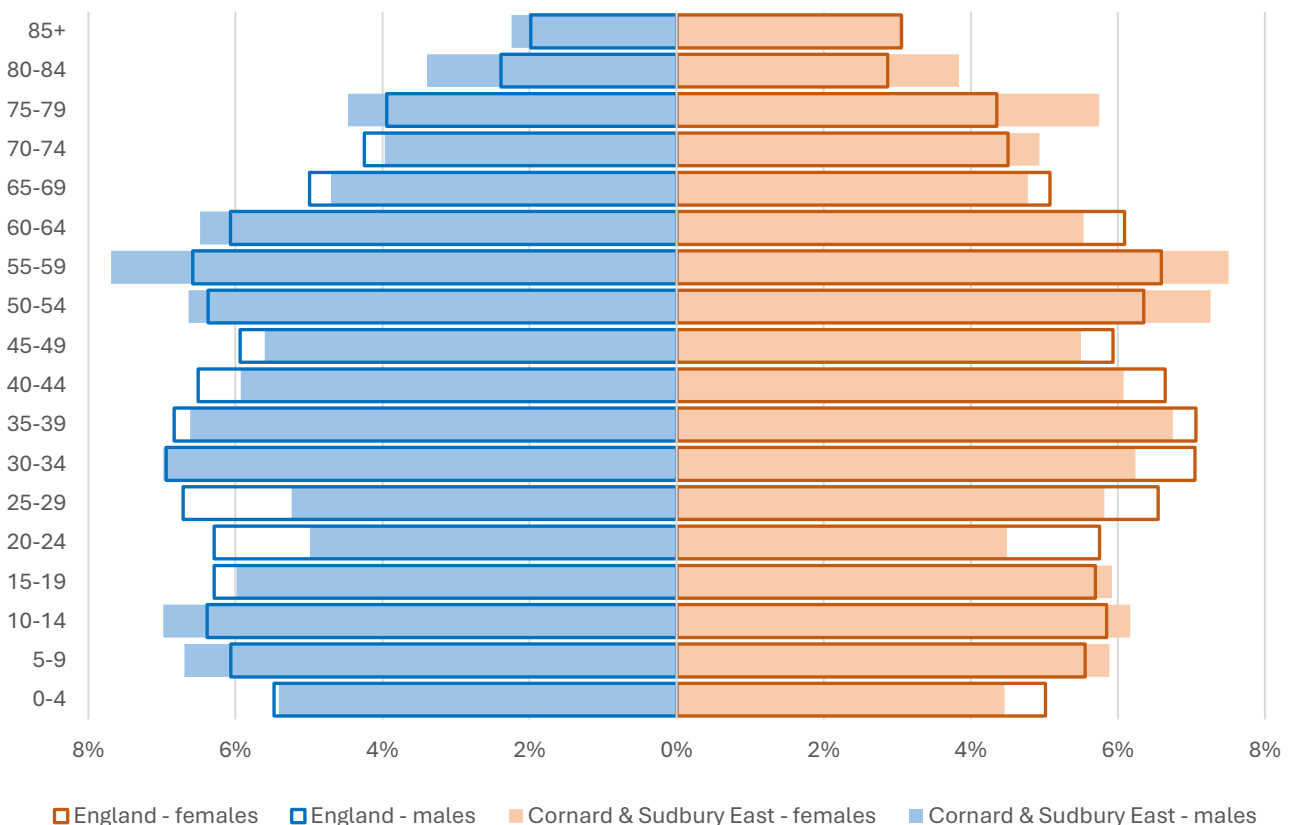
Technical Notes:

1. Where electoral divisions do not exactly match the boundaries at which the data is available (e.g. ward, Output Area or Lower Super Output Area), we have adopted a "best-fit" approach to produce a dataset.
2. District, county and national level data is provided where possible to provide a context for comparisons.

Demographic Profile - Age

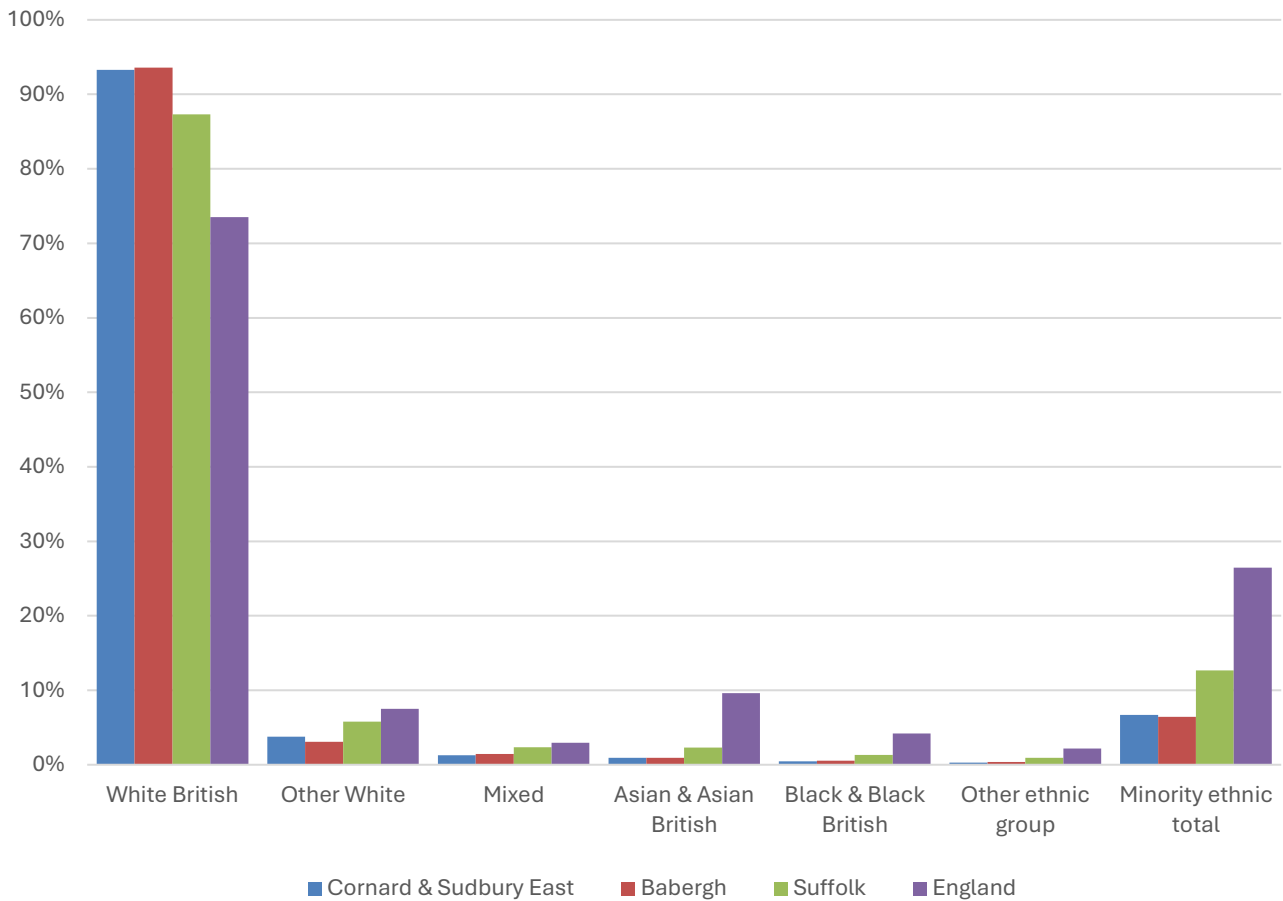
In mid-2024, the estimated population of Cornard and Sudbury East stood at 10,888, an increase of 8.1% over the past decade. The age structure of the component wards and the division as a whole is set out below.

	Cornard & Sudbury East Division	Great Cornard Ward	Sudbury South East Ward
All Ages	10,888	10,114	774
0-4	535	508	27
5-9	683	645	38
10-14	714	673	41
15-19	648	619	29
20-24	515	474	41
25-29	603	557	46
30-34	718	658	60
35-39	728	678	50
40-44	654	607	47
45-49	604	570	34
50-54	758	713	45
55-59	827	750	77
60-64	652	596	56
65-69	516	468	48
70-74	487	448	39
75-79	559	511	48
80-84	395	371	24
85+	292	268	24



- The age pyramid for Cornard and Sudbury East division shows a broadly similar shape to that of England as a whole.
- The most common age group in the division is 55-59-year-olds (7.6% of the local population), followed by 50-54-year-olds (7%), and 35-39-year-olds (6.7%).
- Just over a fifth of the population of Cornard and Sudbury East is of retirement age.
- There is a lower-than-average proportion of young adults, particularly between the ages of 20 and 29.

Demographic Profile - Ethnicity

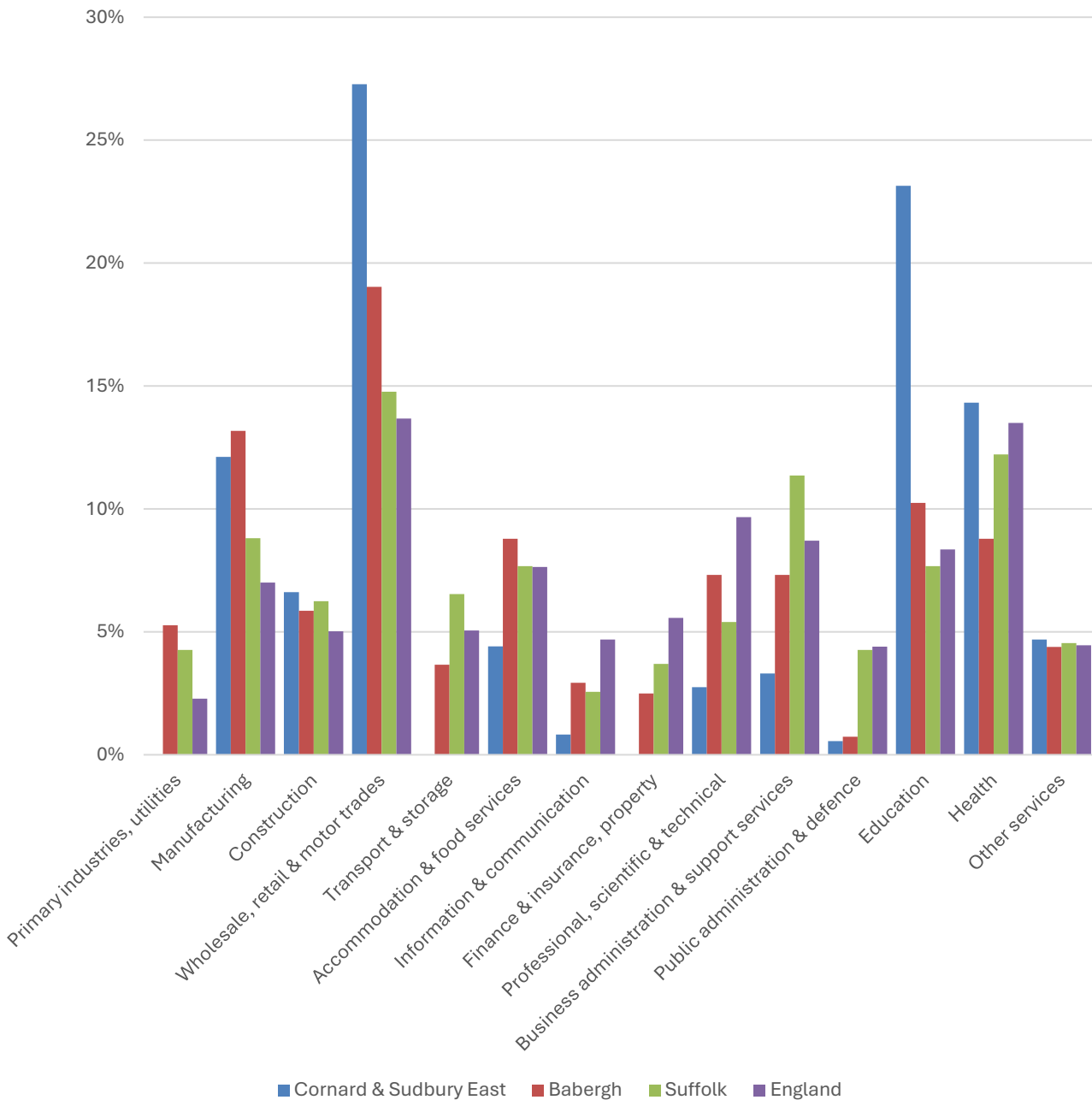


- According to the latest data (2021 Census), 93.3% of the population of Cornard and Sudbury are White British.
- There are 720 (6.7%) people of minority ethnic origin in the division, similar to the proportion in Suffolk as a whole and around a quarter of the England average.
- Cornard and Sudbury East has a similar diversity profile to Babergh district, and lower proportions of all minority ethnic groups than Suffolk as a whole.

	All people	White British		Other White		Mixed		Asian and Asian British		Black and Black British		Other Ethnic Group		Total minority ethnic population	
	Count	Count	%	Count	%	Count	%	Count	%	Count	%	Count	%	Count	%
Cornard & Sudbury East	10,749	10,029	93.3	403	3.7	139	1.3	101	0.9	47	0.4	30	0.3	720	6.7
Babergh	92,342	86,418	93.6	2,851	3.1	1,351	1.5	875	0.9	503	0.5	344	0.4	5,924	6.4
Suffolk	760,687	664,205	87.3	44,066	5.8	17,807	2.3	17,483	2.3	10,168	1.3	6,958	0.9	96,482	12.7
England			73.5		7.5		3.0		9.6		4.2		2.2		26.5

Economy

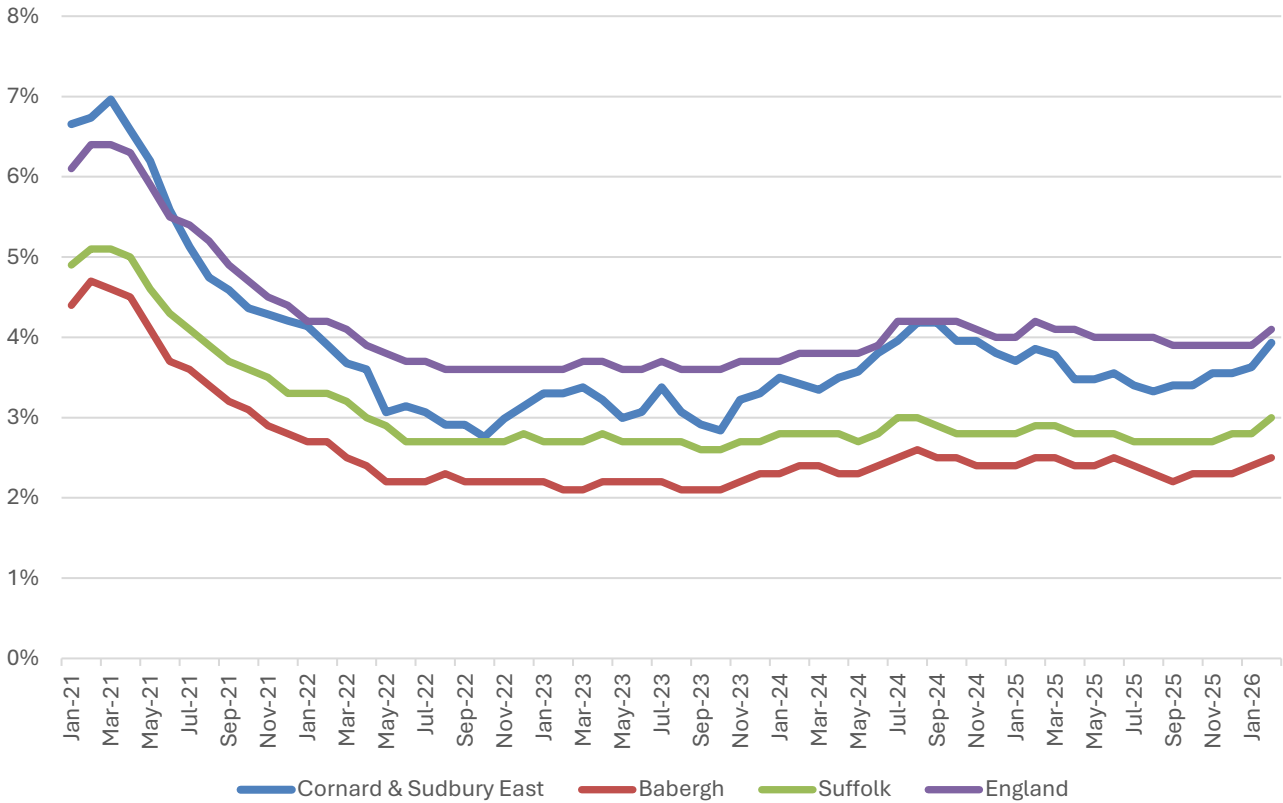
There are around 1,800 people employed in Cornard and Sudbury East.



- Wholesale, retail and motor trades and education are by far the most important sectors in Cornard and Sudbury East.
- These two sectors combined account for half of jobs in the division.
- Manufacturing (12% of employment in Cornard and Sudbury East) and health activities (14%) are also important providers of local jobs.

Labour Market

Out-of-work Benefit Claimant Rate



- In common with Babergh, Suffolk and England as a whole, Cornard and Sudbury East saw a steady decline in the proportion of the working age population claiming of out-of-work benefits during 2021 following a peak during the COVID-19 pandemic.
- Since then, the claimant rate in the division usually remained between 3-3.5%, with higher rates seen in autumn 2024 and in early 2026.
- The claimant rate in Cornard and Sudbury East is consistently above the district and county levels, but below the national benchmark.

Schools

School Information

Schools in the Division

Name	Phase	Academy Status	No. pupils	Average cohort size at:			
				Foundation Stage (age 4-7)	KS2 (age 7-11)	KS4 (age 14-16)	KS5 (age 16-18)
Pot Kiln Primary School	Primary	LA	236	32	46		
Wells Hall Primary School	Primary	AS	494	60	64		
Thomas Gainsborough School	Secondary	AC	1,603			265	94
Chalk Hill	Special	AS	20				

Academy Status key: AS = Academy Sponsored, AC = Academy Converter, LA = LA Maintained, F = Free

Ofsted information

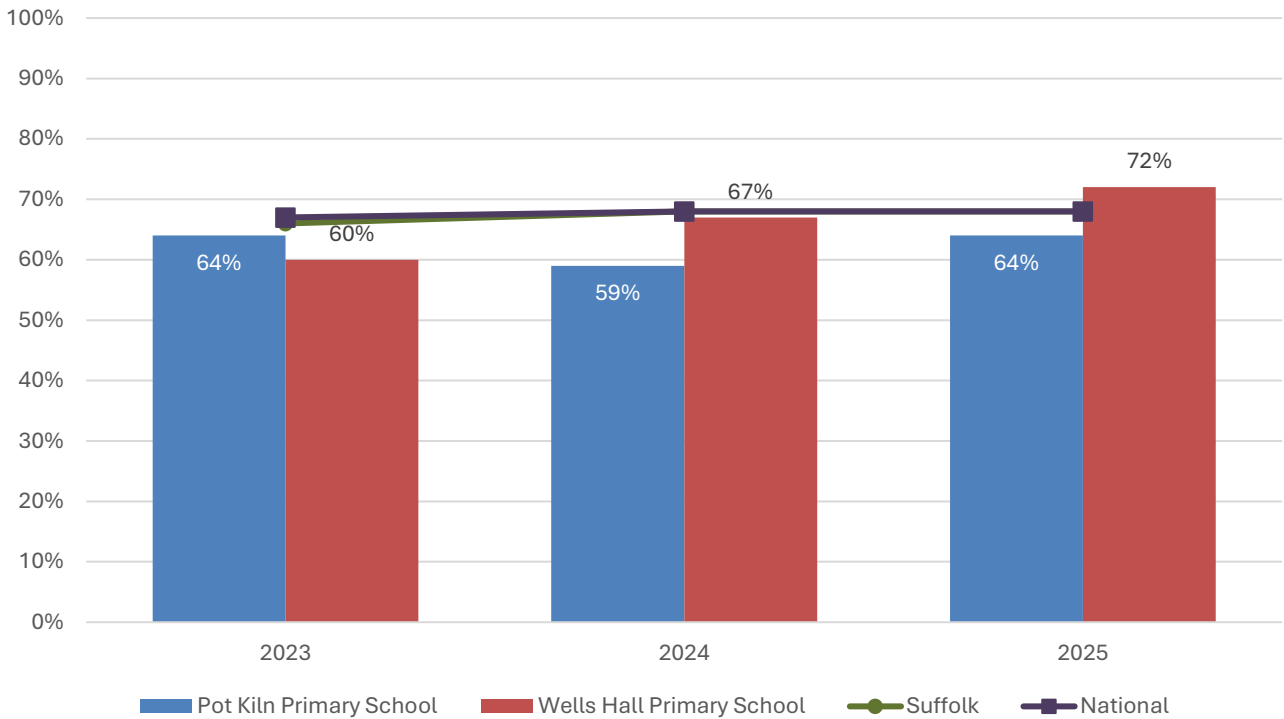
Name	Overall effectiveness	Effectiveness of leadership and	Behaviour and attitudes	Personal development	Early years provision (if applicable)	Quality of education	Last inspection date
Pot Kiln Primary School	2	2	9	9	2	9	02/11/2016
Wells Hall Primary School	2	2	2	2	2	2	14/09/2021
Thomas Gainsborough School	5	2	1	1	9	2	19/11/2024
Chalk Hill	3	2	2	2	9	3	18/10/2023

Code	Judgement	Code	Judgement
0	Insufficient evidence	SM	Special measures
1	Outstanding	8	Does not apply
2	Good	9	No judgement
3	Requires improvement	Null	No data available
4	Inadequate	Not judged	Not judged
SWK	Serious weaknesses	5	No overall grade

School Attainment

Foundation Stage Profile (reception)

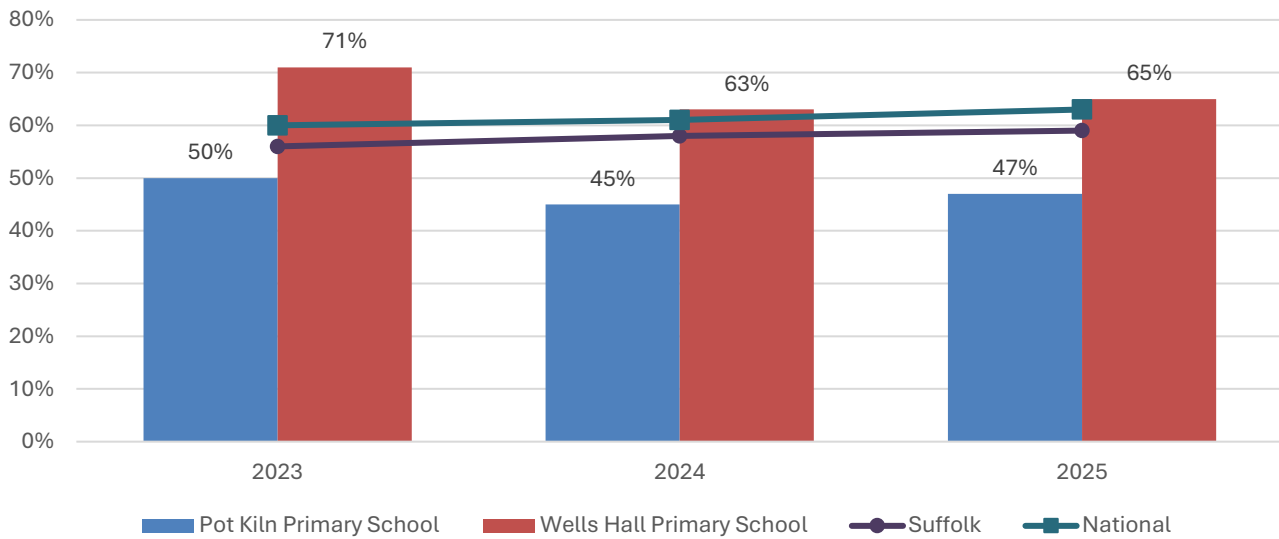
% pupils achieving Good Level of Development (GLD)



- Foundation Stage attainment at Pot Kiln Primary School has been consistently around 5 to 10 percentage points below the Suffolk and national average in each of the last three years of available data.
- At Wells Hall Primary School, the percentage of pupils achieving a good level of development (GLD) has steadily improved over the past three years and was above the national comparator figure in 2025.
- In 2025, 64% of pupils achieved a GLD at Pot Kiln Primary, while 72% reached this level at Wells Hall Primary. In Suffolk and England as a whole, the figure was 68%.

Key Stage 2 (age 11)

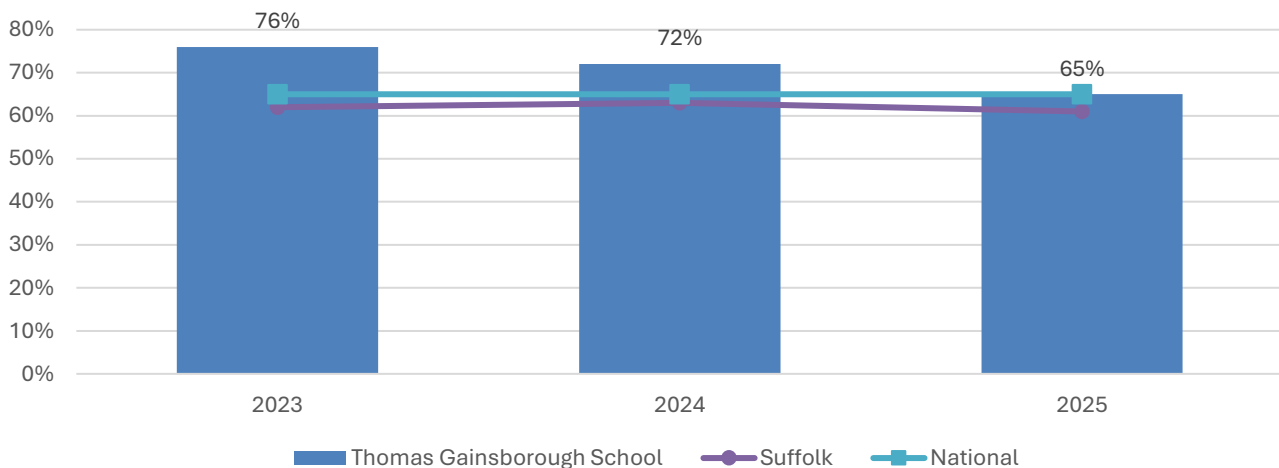
% pupils achieving the Expected Level or better in Reading, Writing and Mathematics



- Key stage 2 attainment at Wells Hall Primary School has been consistently above the county and national average over the past three years of data.
- In 2025, 65% of pupils at Wells Hall Primary achieved the expected level or better in reading, writing and mathematics, two percentage points above the national figure and six above the Suffolk average.
- KS2 attainment at Pot Kiln Primary School has been consistently below average over the last three years.

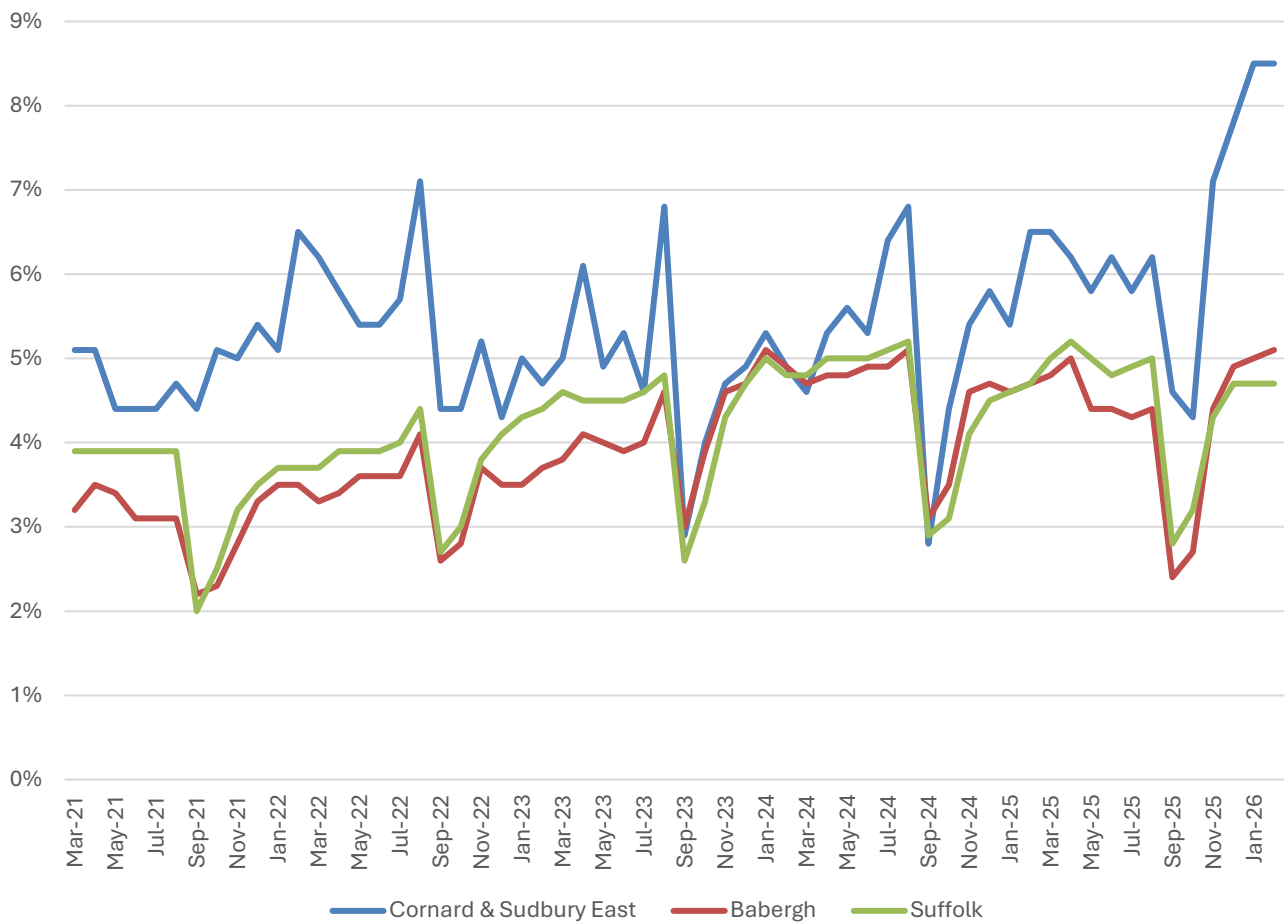
Key Stage 4 (GCSE) (age 16)

% pupils achieving level 4-9 in English and Mathematics



- Key Stage 4 attainment at Thomas Gainsborough School has declined across the last three years but remained consistently at or above the national benchmark throughout.
- According to the most recent data, the percentage of pupils achieving level 4-9 in English and mathematics at Thomas Gainsborough School was the same as the England average of 65%, and four percentage points above the county benchmark.

NEET % (Not in Education, Employment or Training)



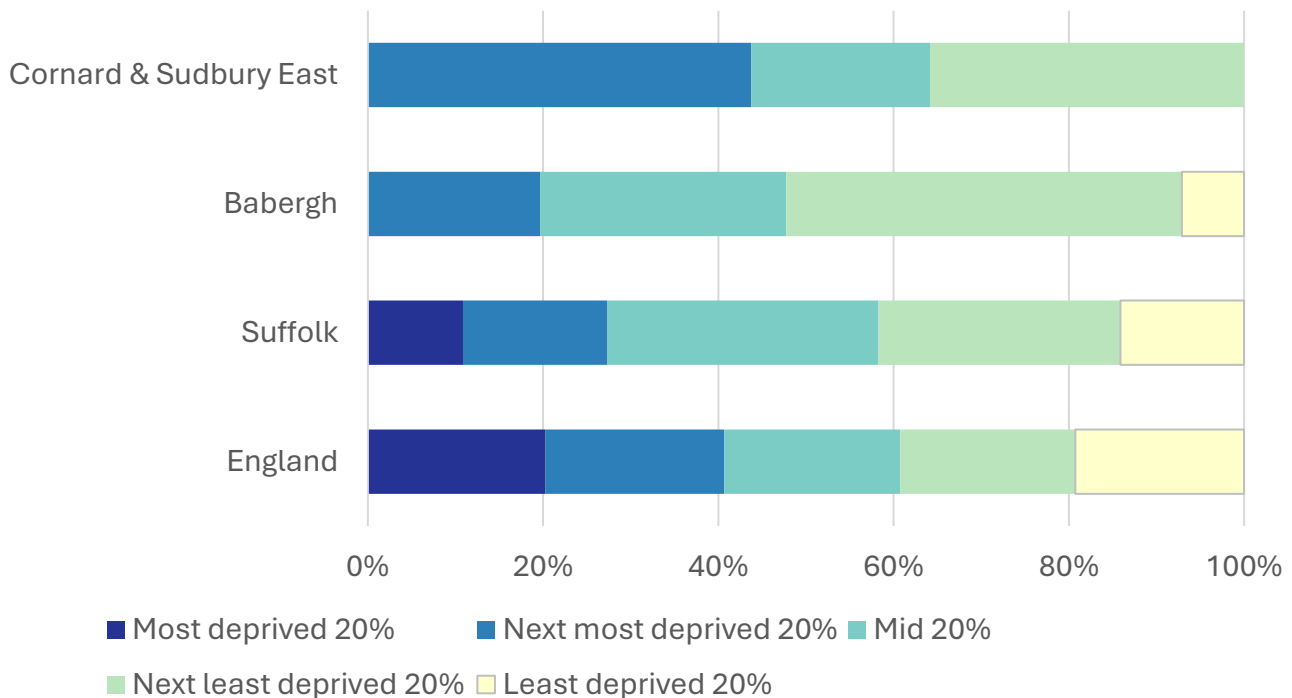
- In February 2026, 8.5% of 16–17-year-olds in Cornard and Sudbury East were classified as NEET (not in education, employment or training), the highest level seen in the division over the last five years.
- NEET levels fluctuate considerably according to the time of year, typically being at their lowest at the beginning of a new school year.
- In Cornard and Sudbury East, NEET levels have been almost invariably above the district and county averages over the last five years.

Index of Multiple Deprivation (IMD) 2025 (see map overleaf)

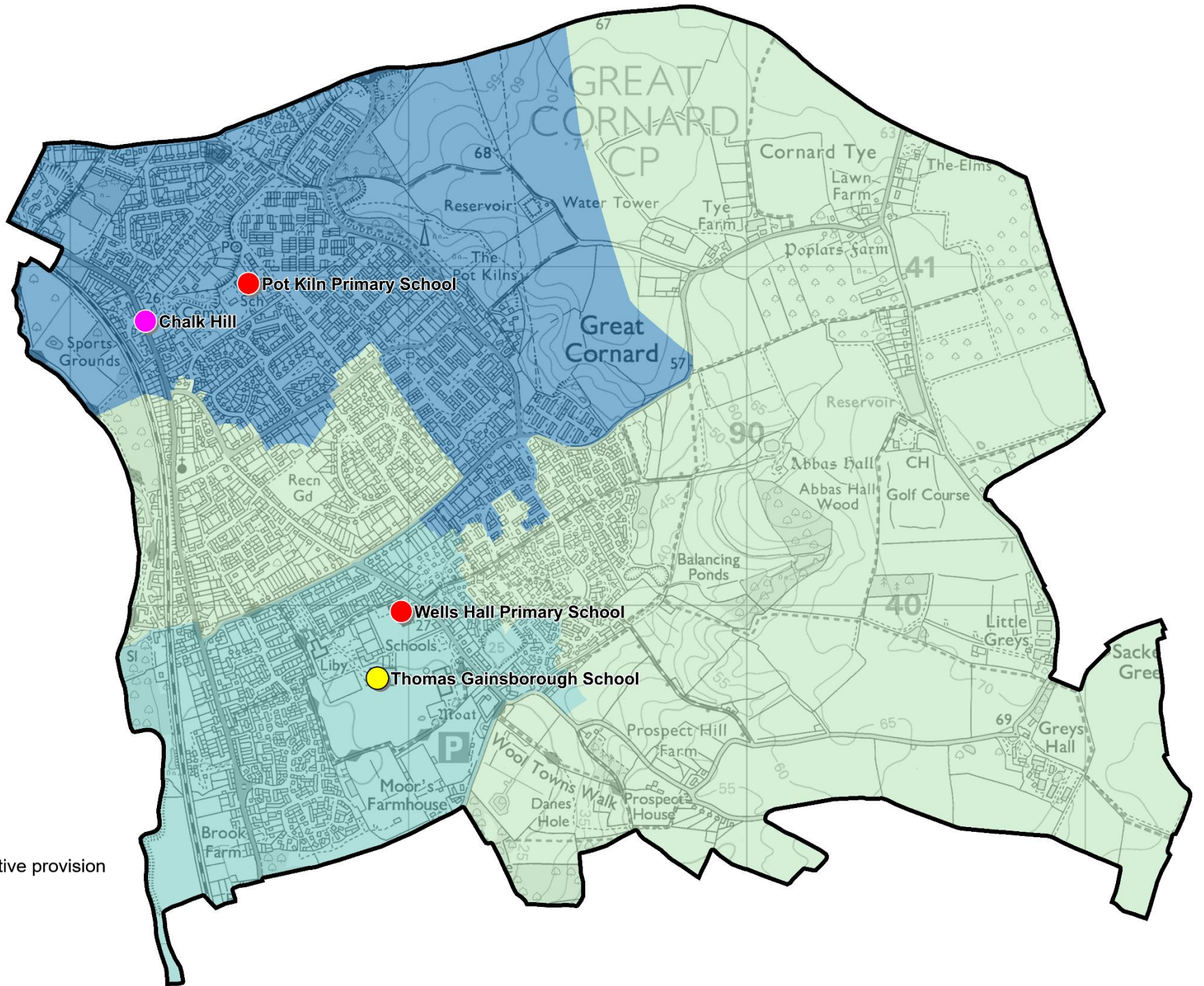
The IMD combines a number of indicators, chosen to cover a range of economic, social and housing issues, into a single deprivation score for each small area in England. This allows each area to be ranked relative to one another according to their level of deprivation. Small areas (Lower Super Output Areas, average population 1,700) are most commonly described as being in 1 of 5 quintile bands. The bottom quintile represents the 20% of areas that are the most deprived in England; these are shaded pale yellow on the map. The top quintile represents the least deprived areas in England and is shaded dark blue.

The Index is widely used to analyse patterns of deprivation, identify areas that would benefit from special initiatives or programmes and as a tool to determine eligibility for specific funding streams.

The chart below shows the percentage of the population of the division that live in areas ranked among each of the five quintiles of deprivation, alongside the district, county and England comparators.



- The 2025 IMD shows that deprivation levels in Cornard and Sudbury East are quite varied, with parts of the division ranked in three of the five deprivation quintiles.
- 44% of the population of the division live in areas that are among the second most deprived 20% of places in England.
- At the same time, 36% of the local population live in neighbourhoods that are ranked in the second least deprived quintile in England. The remaining parts of the division are in the middle quintile of deprivation.
- See the map overleaf for the distribution of IMD 2025 results across the division.



IMD 2025 quintile

- Least deprived 20%
- Next least deprived 20%
- Mid 20%
- Next most deprived 20%
- Most deprived 20%

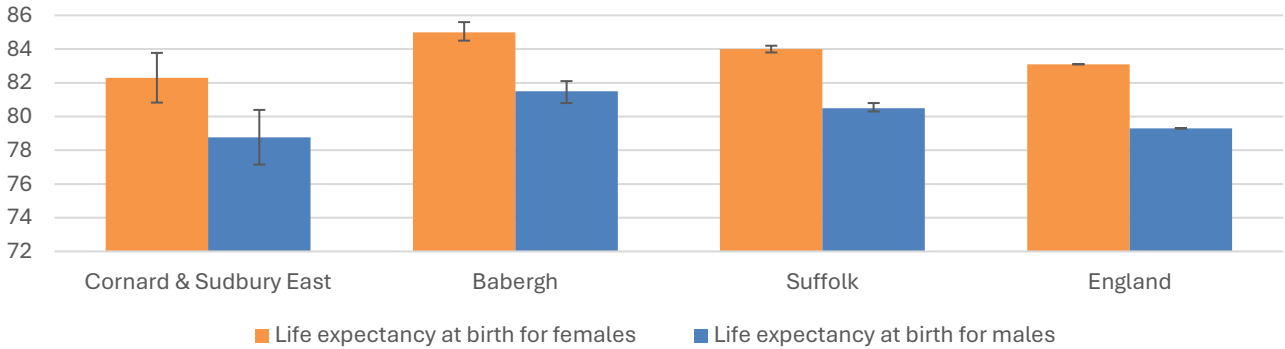
School Phase

- Primary
- Secondary
- Special
- Pupil referral unit/Alternative provision
- Nursery

Health

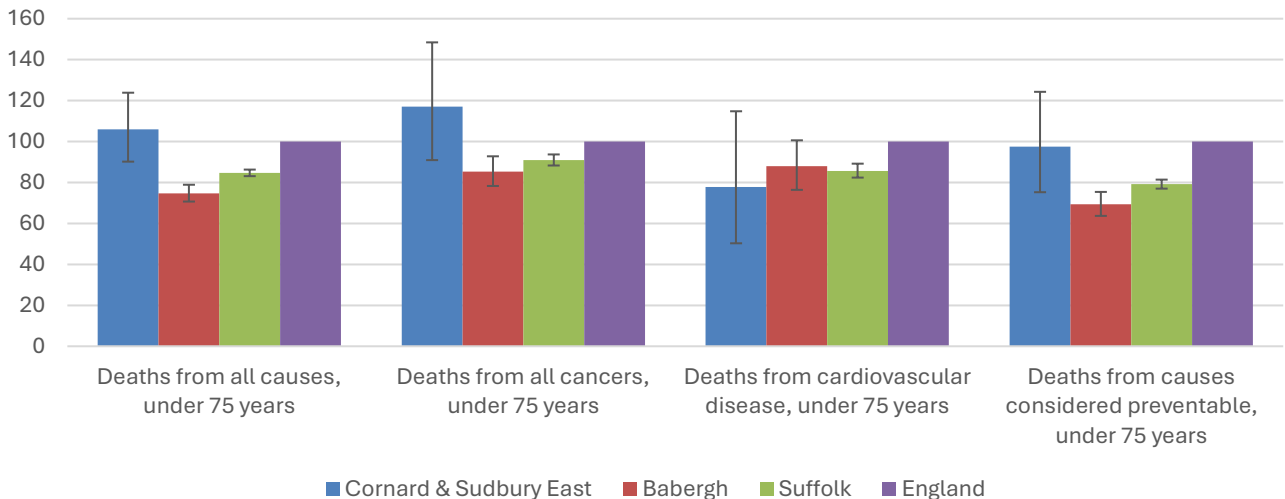
The local data used here is based on relatively small numbers. The confidence limits provide an indication of the reliability of the data. The 95% confidence intervals utilised on the chart provide a range within which there is 95% chance of the true result lying.

Life expectancy at birth



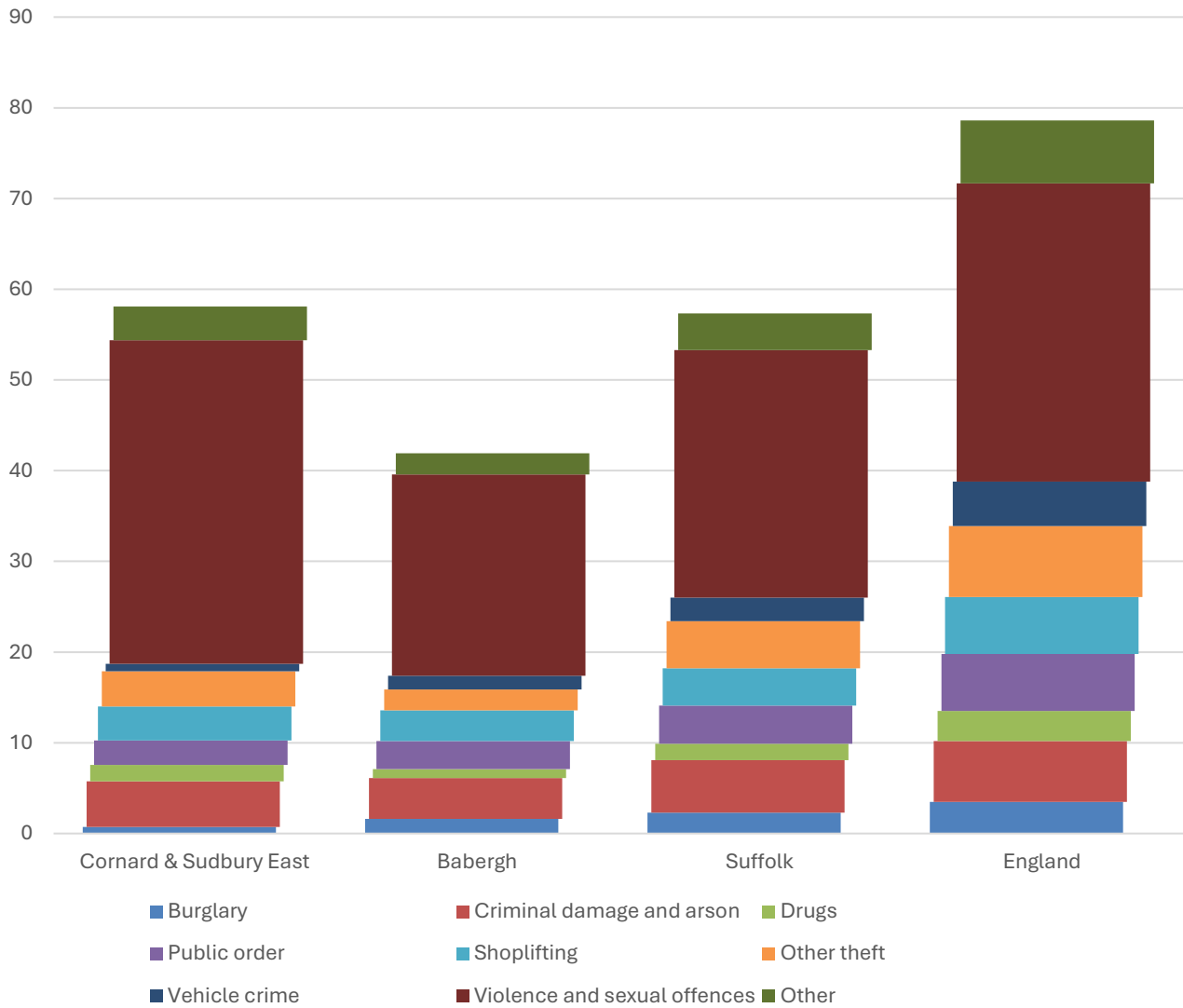
- Estimated life expectancy at birth for both women and men in Cornard and Sudbury East are statistically similar to the Suffolk and England averages but lower than the overall figures for Babergh. Where confidence limits on different columns overlap with each other, this means that figures are statistically similar to one another.
- Current estimated life expectancy at birth for females in Cornard and Sudbury East is just over 82 (the England average is 83.1), compared to just under 79 for males (compared to 79.3 nationally).

Deaths, under 75 years, standardised mortality ratio



- The estimated standardised mortality ratio for early deaths from all causes in Cornard and Sudbury East is statistically significantly higher than the district and county figures.
- Estimated standardised mortality ratios for early deaths from cardiovascular disease and causes considered preventable in are below 100, indicating that deaths in under 75s due to these causes are lower than in England, but confidence intervals around these estimates are wide for local data, and these apparent differences are not statistically significant.
- The standardised mortality ratio data shown here means that for every 100 early deaths from all causes across England as a whole, there are an estimated 106 comparable deaths in Cornard and Sudbury East.

Crime & Community Safety



- Crime levels in Cornard and Sudbury East are above the Babergh district average and similar to the overall county level.
- There were 58 crimes per 1,000 residents in the division in the 12 months to the end of January 2026, compared to 42 in Babergh and 57 countywide.
- The higher crime levels in Cornard and Sudbury East are largely driven by a very high rate of violence and sexual offences. There were just under 36 recorded crimes of this type per 1,000 residents in the division, considerably higher than the Babergh average of 22 per 1,000, and even above the national figure of 33 per 1,000.
- Most other types of crime occur at a lower rate in the division than the district and county average.

Additional Information

Parishes in Division

Great Cornard
Sudbury (part)

Data sources

Category	Indicator	Source
Demographic Profile	Quinary population table 2024	ONS 2024 mid-year population estimates
	Population pyramid 2024	ONS 2024 mid-year population estimates
	Ethnicity 2021	ONS 2021 Census
Economy	Employment by broad industrial sector 2024	ONS Business Register and Employment Survey via NOMIS
Labour market	Claimant count: The number of people claiming Jobseeker's Allowance plus those who claim Universal Credit who are out of work (% 16-64 population) January 2021-February 2026	DWP via NOMIS
Education	School information and attainment 2023-2025	Suffolk County Council CYP iHub
	% 16-17-year-olds NEET (Not in Employment, Education or Training) March 2021 to February 2026	Suffolk County Council CYP iHub via the Suffolk Observatory
Deprivation	Index of Multiple Deprivation 2025	Ministry of Housing, Communities and Local Government
Health	Life expectancy at birth 2016-2020 (2018-2020 for comparator areas)	Office for Health Improvement and Disparities
Health	Standardised mortality ratio for deaths from all causes, cancer, cardiovascular disease, and from causes considered preventable (under 75 years), 2016-2020 (2019-2023 for comparator areas). The standardised mortality ratio is the ratio of observed deaths in the study group to expected deaths in the general population	Office for Health Improvement and Disparities
Community Safety	Recorded crime rate per 1,000 resident population February 2025 to January 2026	Data.police.uk via the Suffolk Observatory

For more data and information about Cornard and Sudbury East Electoral Division, see the Suffolk Observatory www.suffolkobservatory.info

