

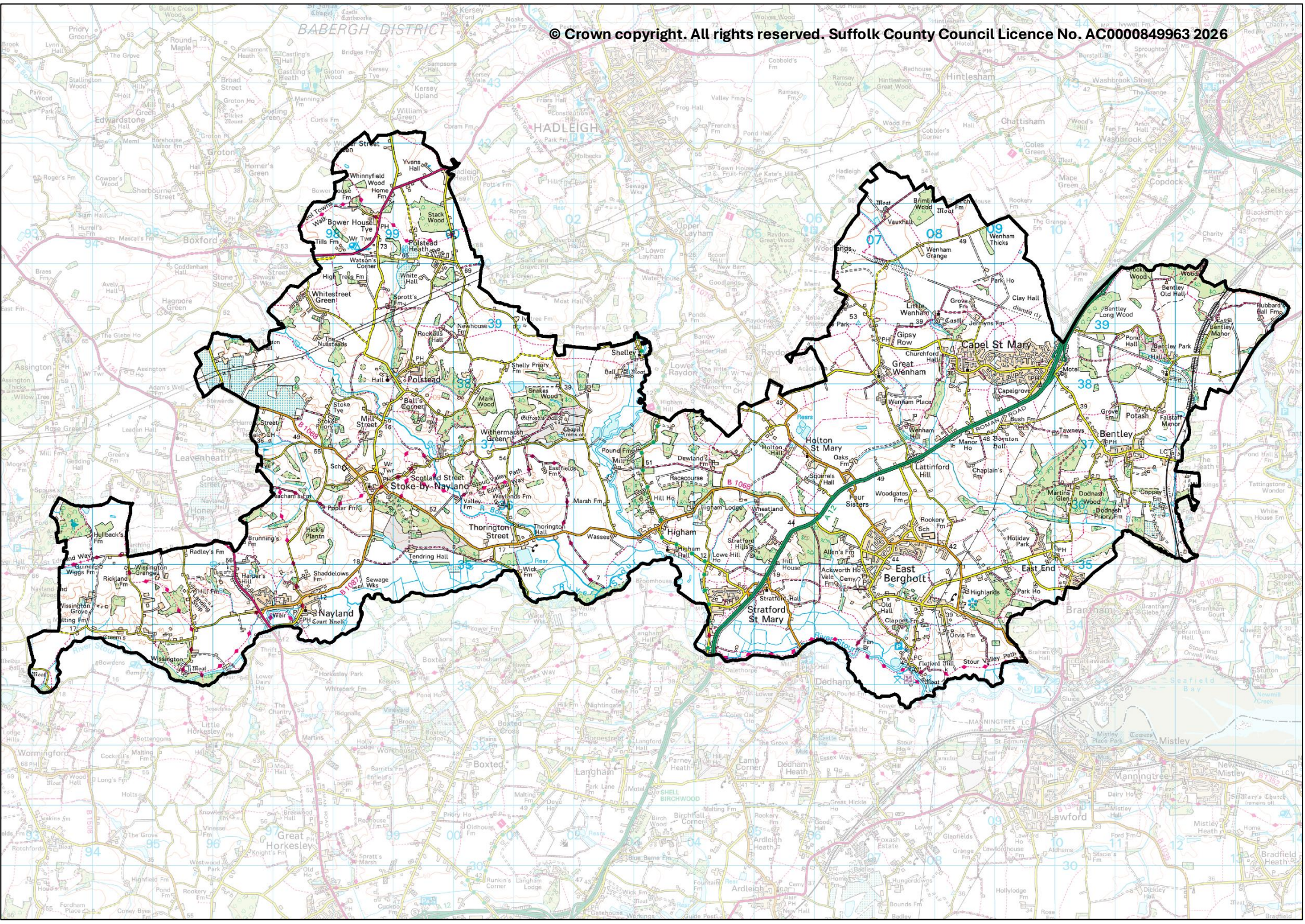
# Constable

County Electoral Division profile

May 2026

This division comprises Capel St Mary and East Bergholt Wards in their entirety, and parts of Brett Vale, Bures St Mary & Nayland, and Copdock & Washbrook Wards





# Contents

- Demographic Profile: Age & Ethnicity
- Economy and Labour Market
- Schools & NEET
- Index of Multiple Deprivation
- Health
- Crime & Community Safety
- Additional Information
- Data Sources

# Electoral Division Profiles: an introduction

These profiles have been produced to support elected members, constituents and other interested parties in understanding the demographic, economic, social and educational profile of their neighbourhoods. We have used the latest data available at the time of publication.

Much more data is available from national and local sources than is captured here, but it is hoped that the profile will be a useful starting point for discussion, where local knowledge and experience can be used to flesh out and illuminate the information presented here.

The profile can be used to help look at some fundamental questions e.g.

- Does the age profile of the population match or differ from the national profile?
- Is there evidence of the ageing profile of the county in all the wards in the Division or just some?
- How diverse is the community in terms of ethnicity?
- What is the impact of deprivation on families and residents?
- Does there seem to be a link between deprivation and school performance?
- What is the breakdown of employment sectors in the area?
- Is it a relatively healthy area compared to the rest of the district or county?
- What sort of crime is prevalent in the community?

A vast amount of additional data is available on the **Suffolk Observatory**

[www.suffolkobservatory.info](http://www.suffolkobservatory.info)

The Suffolk Observatory is a free online resource that contains all Suffolk's vital statistics; it is the one-stop-shop for information and intelligence about Suffolk. Through data, reports and maps, the Suffolk Observatory provides a comprehensive picture of the County. It is a great source for useful facts and figures that can be used for writing reports and presentations, informing strategic and business planning, preparing funding applications or supporting academic research. Data is presented around the key themes of population, children and young people, health and social care, housing, crime and community safety, deprivation, economy and employment and environment. All areas of the county are covered, right down to district, electoral division, ward and parish level, with information easily accessible in a variety of formats. You can also build your own reports for custom areas.

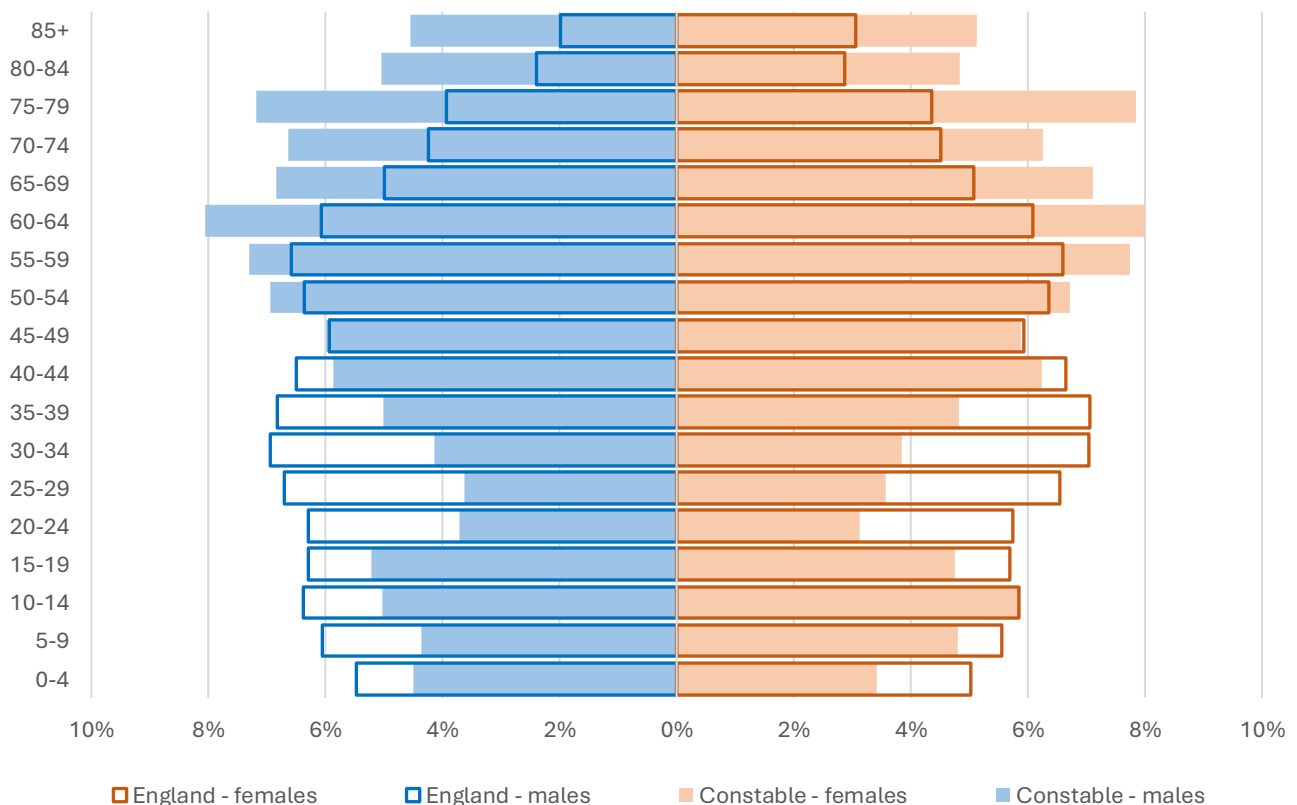
## Technical Notes:

1. Where electoral divisions do not exactly match the boundaries at which the data is available (e.g. ward, Output Area or Lower Super Output Area), we have adopted a "best-fit" approach to produce a dataset.
2. District, county and national level data is provided where possible to provide a context for comparisons.

# Demographic Profile - Age

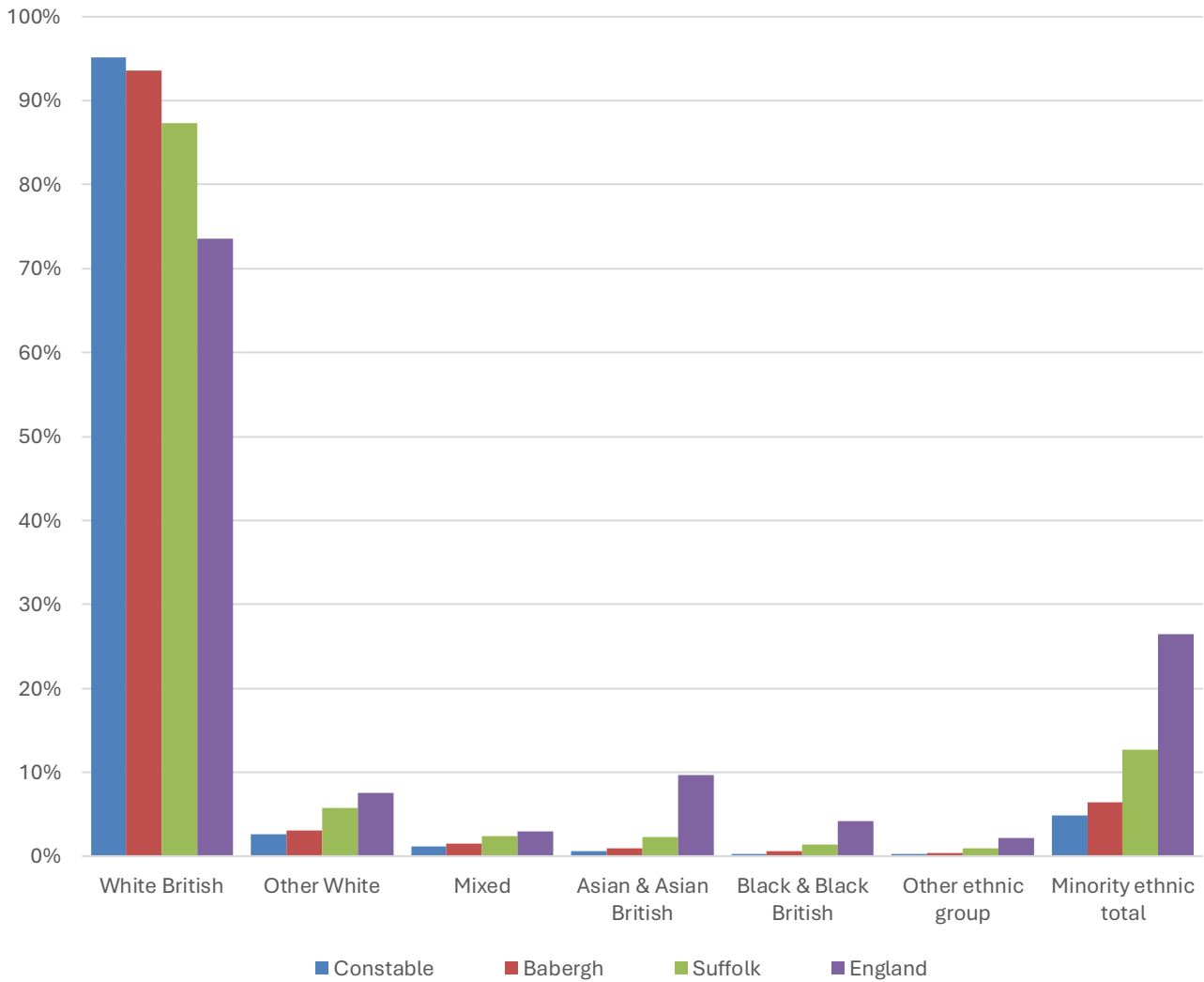
In mid-2024, the estimated population of Constable stood at 11,176, an increase of 7.3% over the past decade. The age structure of the component wards and the division as a whole is set out below.

	Constable Division	Capel St Mary Ward	East Bergholt Ward	Brett Vale Ward	Bures St Mary & Nayland Ward	Copdock & Washbrook Ward
<b>All Ages</b>	<b>11,176</b>	3,407	2,760	2,091	1,912	1,006
<b>0-4</b>	<b>441</b>	133	103	71	90	44
<b>5-9</b>	<b>513</b>	191	105	81	97	39
<b>10-14</b>	<b>611</b>	196	138	101	124	52
<b>15-19</b>	<b>556</b>	169	143	121	76	47
<b>20-24</b>	<b>381</b>	138	85	70	54	34
<b>25-29</b>	<b>402</b>	169	84	72	53	24
<b>30-34</b>	<b>446</b>	160	96	66	83	41
<b>35-39</b>	<b>549</b>	187	133	96	96	37
<b>40-44</b>	<b>677</b>	205	144	134	119	75
<b>45-49</b>	<b>663</b>	231	155	129	90	58
<b>50-54</b>	<b>764</b>	194	224	153	114	79
<b>55-59</b>	<b>841</b>	219	238	170	131	83
<b>60-64</b>	<b>897</b>	233	220	214	165	65
<b>65-69</b>	<b>780</b>	194	211	163	146	66
<b>70-74</b>	<b>720</b>	210	178	124	133	75
<b>75-79</b>	<b>841</b>	260	211	150	136	84
<b>80-84</b>	<b>552</b>	194	122	95	83	58
<b>85+</b>	<b>542</b>	124	170	81	122	45



- The age pyramid for Constable division shows a higher proportion of people aged 50 and over than exists in England as a whole.
- The most common age group in the division is 60-64-year-olds (8% of the total population of the division), followed by 55-59 and 75-79-year-olds (both 7.5%).
- Just over 30% of the population of Constable is of retirement age.
- There is a lower-than-average proportion of children and young people, and adults aged under 45.

# Demographic Profile - Ethnicity

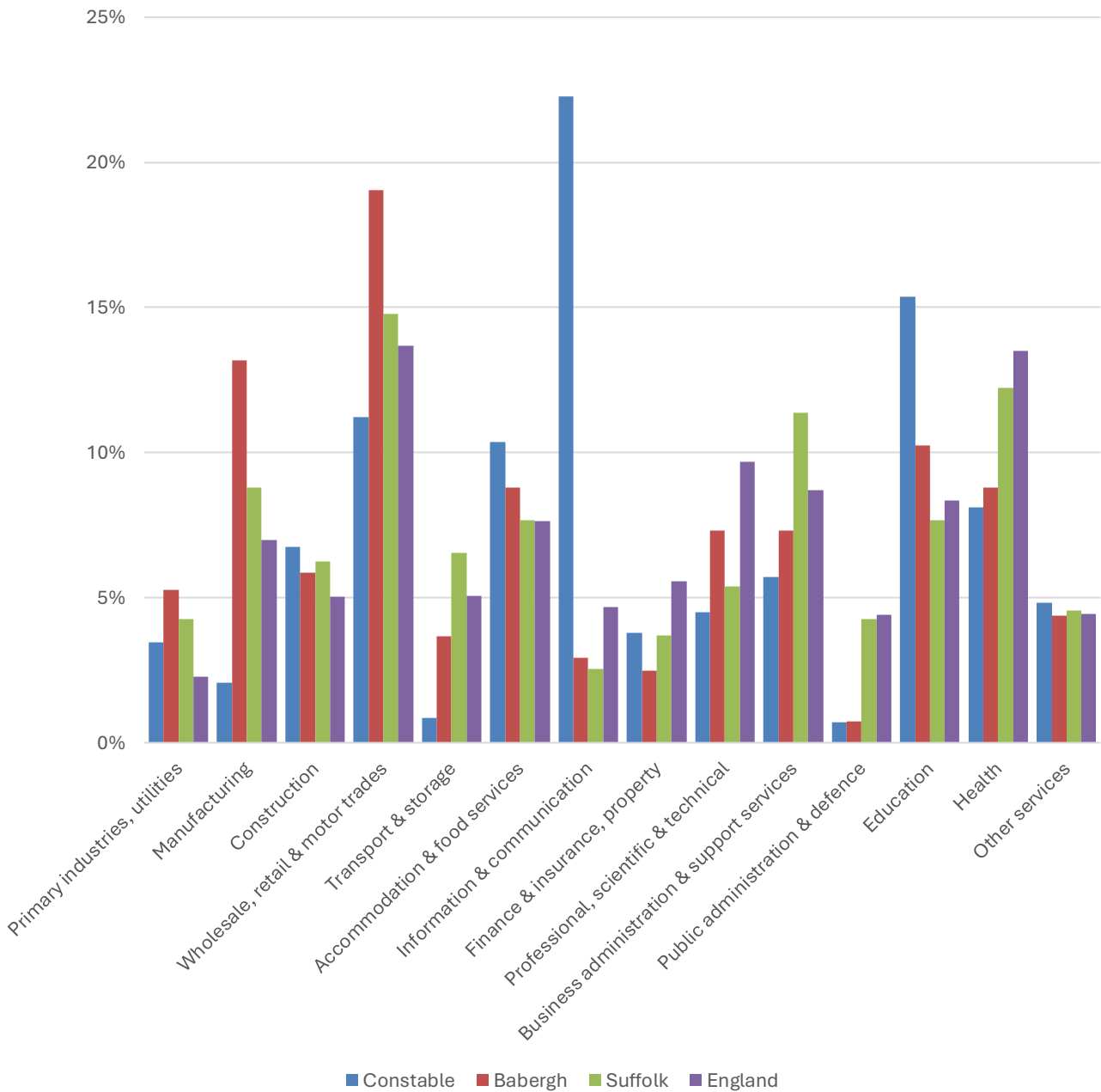


- According to the latest data (2021 Census), 95.1% of the population of Constable are White British.
- There are 522 (4.9%) people of minority ethnic origin in the division, less than the proportion in Babergh and Suffolk, and around a fifth of the England average.
- Constable has a similar diversity profile to Babergh district, and lower proportions of all minority ethnic residents than Suffolk as a whole.

	All people		White British		Other White		Mixed		Asian and Asian British		Black and Black British		Other Ethnic Group		Total minority ethnic population	
	Count	%	Count	%	Count	%	Count	%	Count	%	Count	%	Count	%	Count	%
Constable	10,728		10,206	95.1	277	2.6	127	1.2	66	0.6	26	0.2	26	0.2	522	4.9
Babergh	92,342		86,418	93.6	2,851	3.1	1,351	1.5	875	0.9	503	0.5	344	0.4	5,924	6.4
Suffolk	760,687		664,205	87.3	44,066	5.8	17,807	2.3	17,483	2.3	10,168	1.3	6,958	0.9	96,482	12.7
England				73.5		7.5		3.0		9.6		4.2		2.2		26.5

# Economy

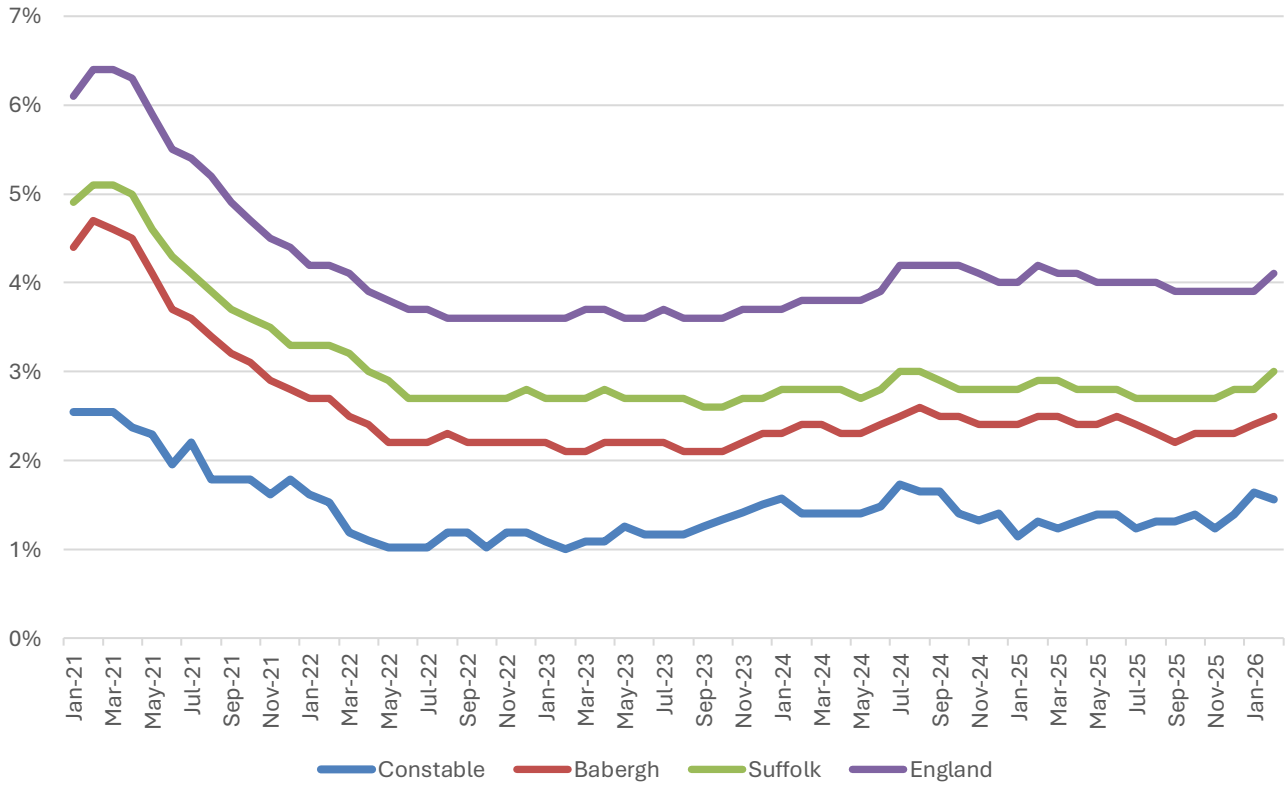
There are around 2,900 people employed in Constable.



- Information and communication is the most important sector in Constable, providing more than a fifth of jobs in the division. Across Suffolk as a whole, this sector accounts for only 2.5% of jobs, so it is a particular local specialism for Constable.
- Education accounts for a further 1 in 7 local jobs, around double the proportion in Suffolk overall.
- Wholesale, retail and motor trades, and accommodation and food services are also important sectors in Constable, each providing around 10% of employment locally.

# Labour Market

## Out-of-work Benefit Claimant Rate



- In common with Babergh, Suffolk and England as a whole, Constable saw a steady decline in the proportion of the working age population claiming of out-of-work benefits during 2021 following a peak during the COVID-19 pandemic.
- Since then, the claimant rate in the division has been fairly stable, generally at between 1% and 1.5%.
- The claimant rate in Constable is consistently below the district, county and national benchmarks.

# Schools

## School Information

### Schools in the Division

Name	Phase	Academy Status	No. pupils	Average cohort size at:			
				Foundation Stage (age 4-7)	KS2 (age 7-11)	KS4 (age 14-16)	KS5 (age 16-18)
Bentley CEVCP School	Primary	LA	40	7	8		
Capel St Mary CEVCP School	Primary	LA	273	35	36		
East Bergholt CEVCP School	Primary	LA	195	26	28		
Nayland Primary School	Primary	LA	197	27	31		
Stoke-by-Nayland CofE Primary School	Primary	AS	48	4	6		
Stratford St Mary Primary School	Primary	LA	88	11	14		
East Bergholt High School	Secondary	AC	902			184	

Academy Status key: AS = Academy Sponsored, AC = Academy Converter, LA = LA Maintained, F = Free

### Ofsted information

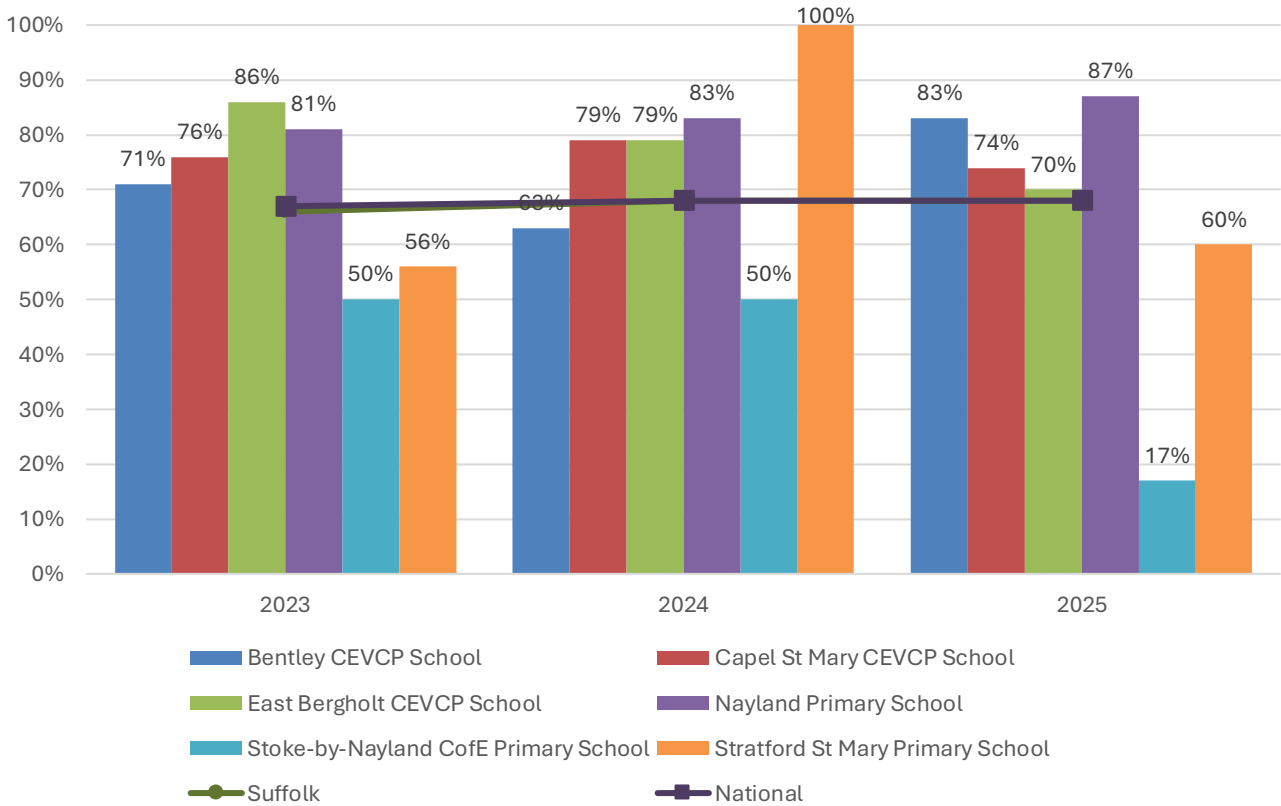
Name	Overall effectiveness	Effectiveness of leadership and management	Behaviour and attitudes	Personal development	Early years provision (if applicable)	Quality of education	Last inspection date
Bentley CEVCP School	2	2	9	9	2	9	06/03/2015
Capel St Mary CEVCP School	2	2	2	2	2	2	10/03/2020
East Bergholt CEVCP School	2	2	2	2	2	2	16/07/2024
Nayland Primary School	2	2	1	1	2	2	29/10/2019
Stoke-by-Nayland CofE Primary School	2	2	2	2	0	2	26/09/2023
Stratford St Mary Primary School	2	2	2	2	2	2	14/11/2023
East Bergholt High School	2	2	9	9	9	9	13/09/2013

Code	Judgement	Code	Judgement
0	Insufficient evidence	SM	Special measures
1	Outstanding	8	Does not apply
2	Good	9	No judgement
3	Requires improvement	Null	No data available
4	Inadequate	Not judged	Not judged
SWK	Serious weaknesses	5	No overall grade

# School Attainment

## Foundation Stage Profile (reception)

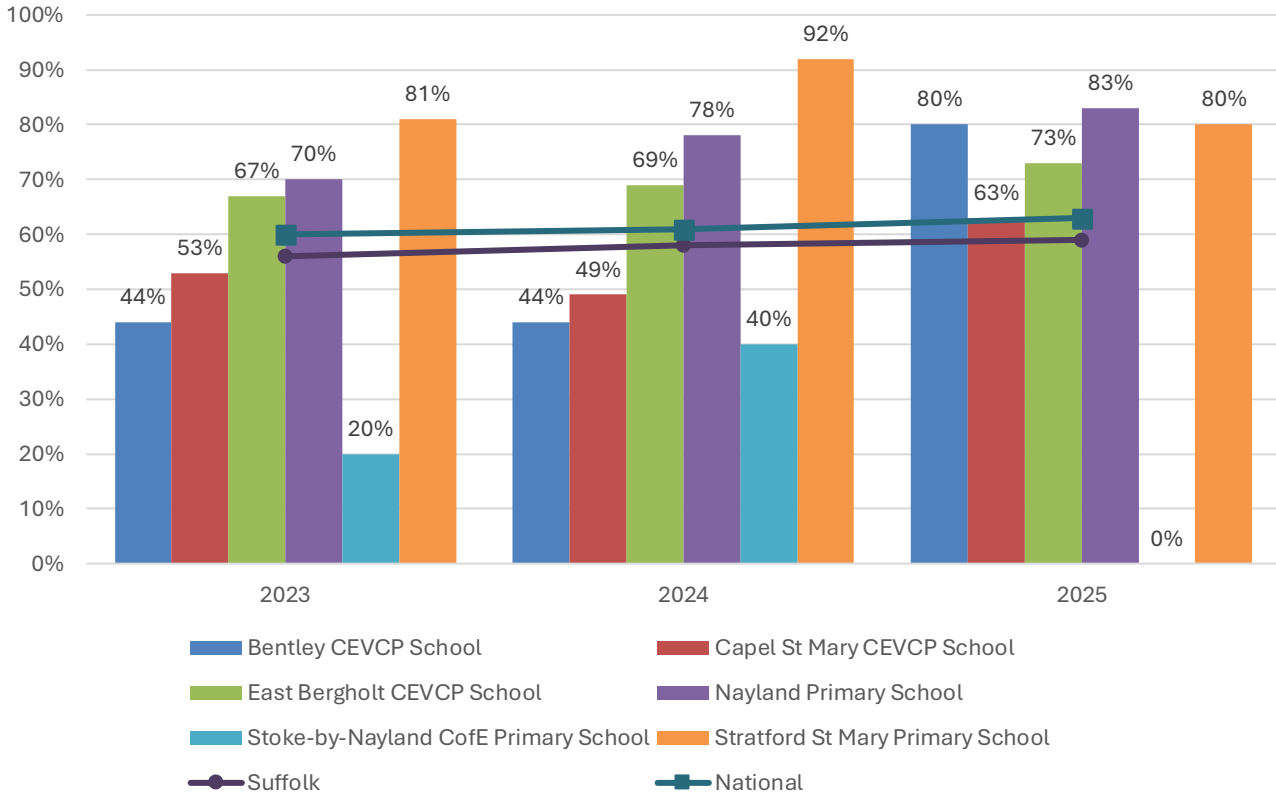
% pupils achieving Good Level of Development (GLD)



- Foundation Stage attainment over the past three years at primary schools in Constable has generally been good.
- The percentage of pupils achieving a Good Level of Development (GLD) at Early Years Foundation Stage (EYFS) at East Bergholt CEVCP, Capel St Mary CEVCP and Nayland Primary schools has been consistently above the national average across each of the last three years of available data.
- Stoke-by-Nayland Church of England Primary is the only school in the division to have recorded attainment below the county and national averages over each of the past three years.

## Key Stage 2 (age 11)

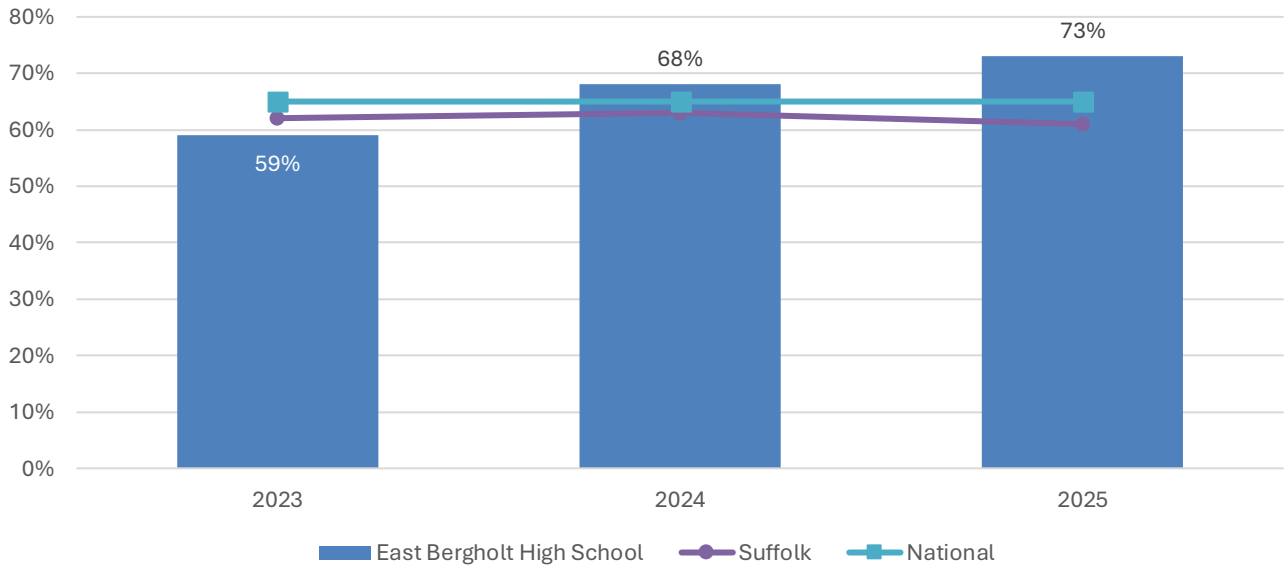
% pupils achieving the Expected Level or better in Reading, Writing and Mathematics



- At Stratford St Mary Primary, East Bergholt CEVCP, and Nayland Primary Schools, the percentage of pupils achieving the expected level or better in reading, writing, and mathematics was above the national average in 2023, 2024 and 2025.
- Stoke-by-Nayland Church of England Primary is the only school in the division to have recorded attainment below the county and national averages over each of the past three years.
- At other schools in the division, KS2 attainment has been more mixed. At Bentley CEVCP School, for example, the percentage of pupils achieving the expected level or better in reading, writing, and mathematics was around 16 percentage points below the national average in 2023 and 2024, but 17 percentage points higher in 2025.

### Key Stage 4 (GCSE) (age 16)

% pupils achieving level 4-9 in English and Mathematics



- Key Stage 4 attainment at East Bergholt High School has improved across the last three years of available data and was above the county and national benchmarks in 2024 and 2025.
- According to the most recent data, the percentage of pupils achieving level 4-9 in English and mathematics at East Bergholt High School was 12 percentage points above the county figure, and eight percentage points above the national benchmark.

## NEET % (Not in Education, Employment or Training)



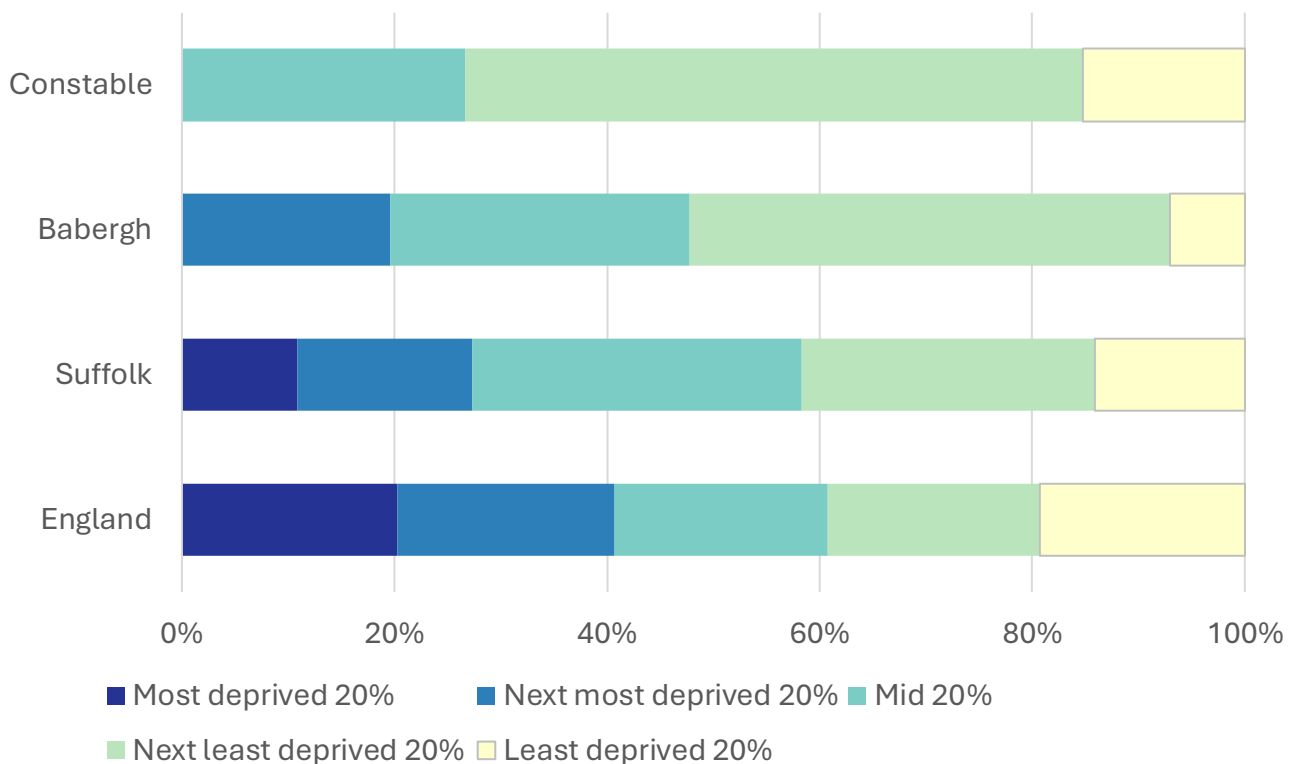
- In February 2026 around 0.5% of 16–17-year-olds in Constable were classified as NEET (not in education, employment or training).
- NEET levels fluctuate considerably according to the time of year, typically being at their lowest at the beginning of a new school year.
- In Constable, NEET levels have been below the district and county averages over the last five years, aside from a period in 2021 and 2022.

## Index of Multiple Deprivation (IMD) 2025 (see map overleaf)

The IMD combines a number of indicators, chosen to cover a range of economic, social and housing issues, into a single deprivation score for each small area in England. This allows each area to be ranked relative to one another according to their level of deprivation. Small areas (Lower Super Output Areas, average population 1,700) are most commonly described as being in 1 of 5 quintile bands. The bottom quintile represents the 20% of areas that are the most deprived in England; these are shaded pale yellow on the map. The top quintile represents the least deprived areas in England and is shaded dark blue.

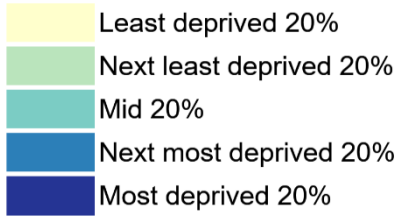
The Index is widely used to analyse patterns of deprivation, identify areas that would benefit from special initiatives or programmes and as a tool to determine eligibility for specific funding streams.

The chart below shows the percentage of the population of the division that live in areas ranked among each of the five quintiles of deprivation, alongside the district, county and England comparators.

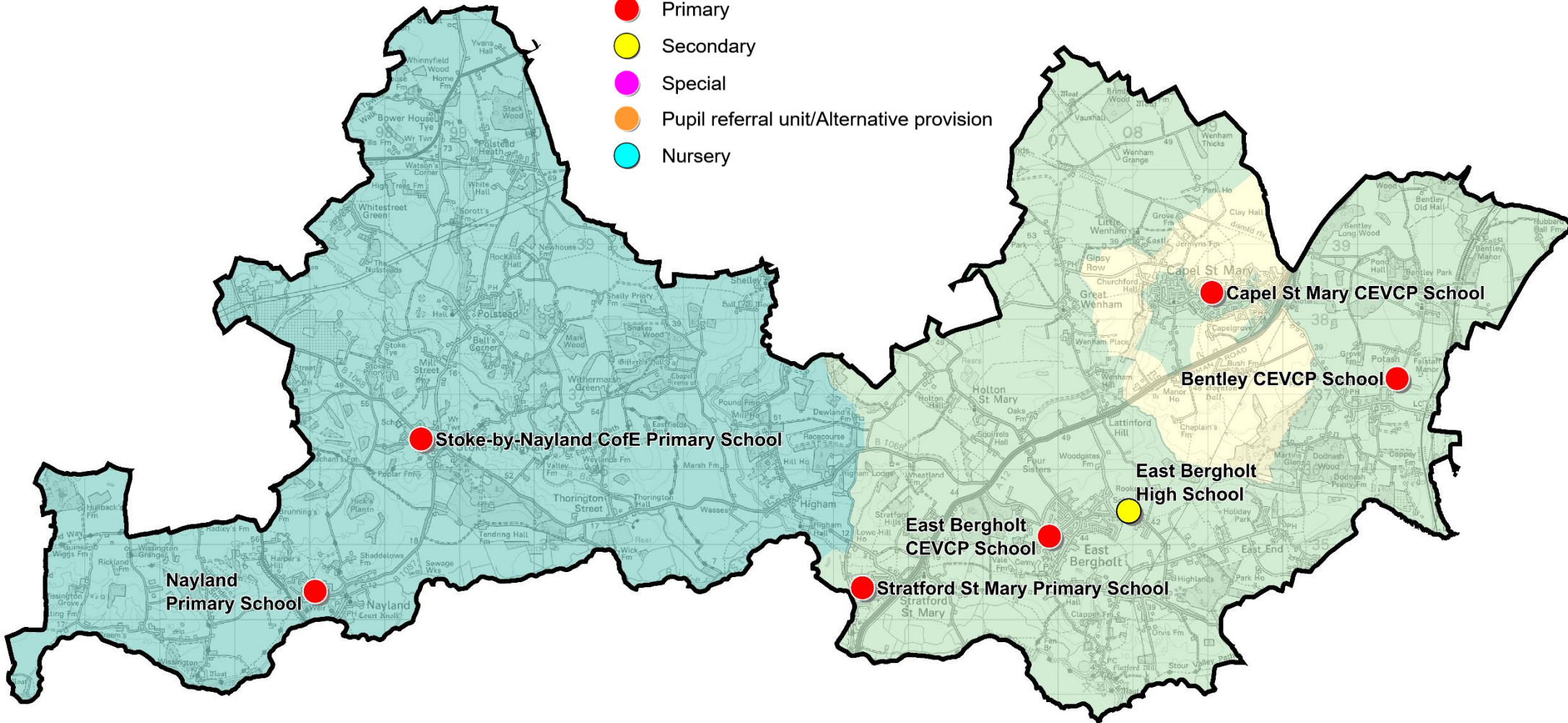
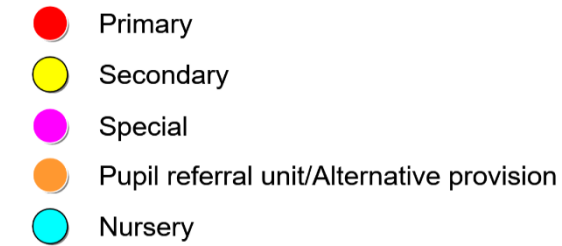


- The 2025 IMD shows that relative deprivation levels in Constable are low to moderate.
- Almost three-quarters of people in the division live in areas that are among the least deprived 40% in England (15% in the least deprived quintile, 58% in the next least deprived).
- The remaining quarter of the population live in neighbourhoods ranked in the middle quintile of deprivation.
- See the map overleaf for the distribution of IMD 2025 results across the division.

**IMD 2025 quintile**



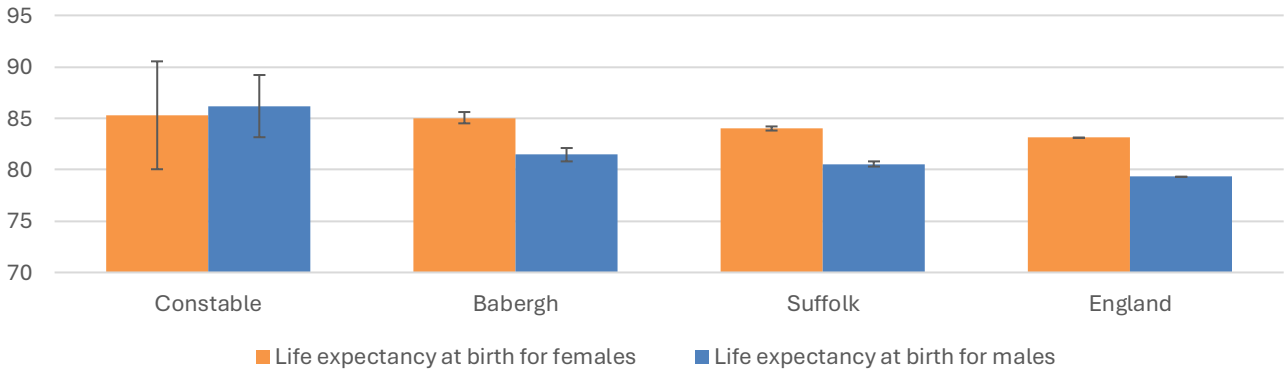
**School Phase**



# Health

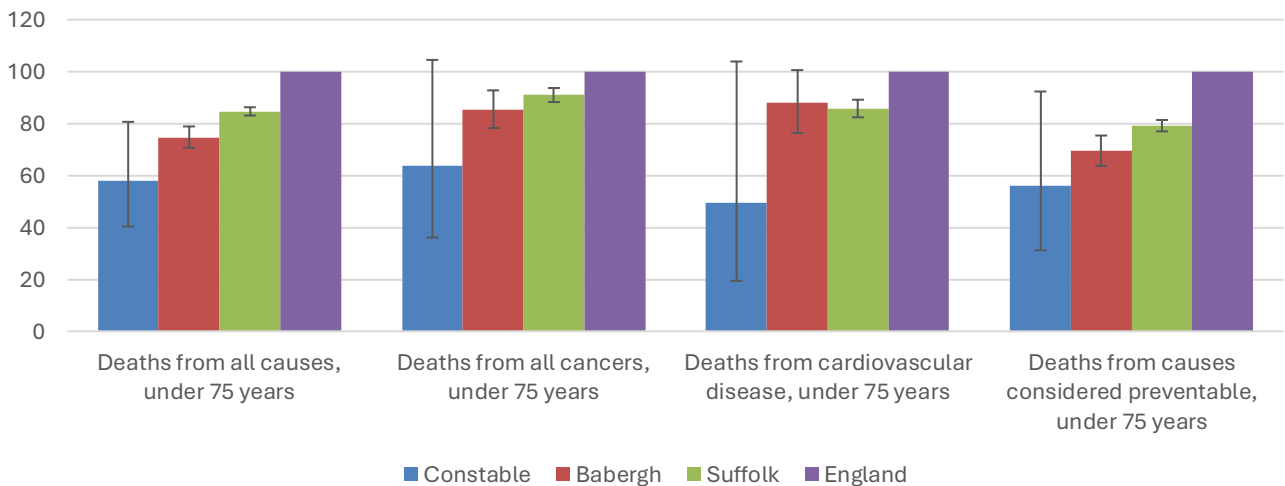
The local data used here is based on relatively small numbers. The confidence limits provide an indication of the reliability of the data. The 95% confidence intervals utilised on the chart provide a range within which there is 95% chance of the true result lying.

## Life expectancy at birth



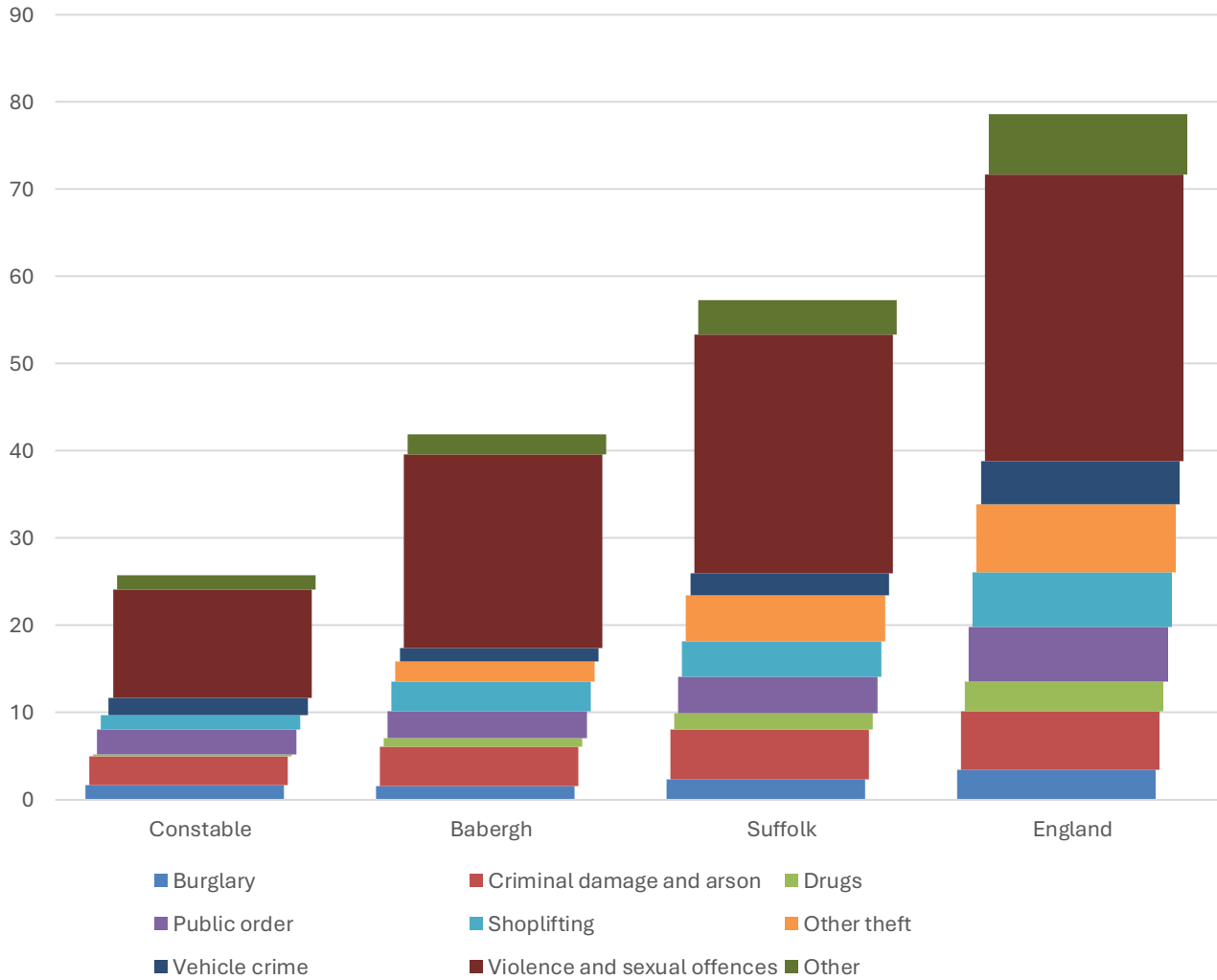
- Estimated life expectancy at birth for women in Constable is statistically similar to the Babergh, Suffolk and England benchmarks.
- For males, estimated life expectancy in Constable is statistically significantly higher than the district, county and national averages.
- Current life expectancy at birth for females in Constable is just over 85 (the England average is 83.1), compared to just above 86 for males (compared to 79.3 nationally).

## Deaths, under 75 years, standardised mortality ratio



- Estimated standardised mortality ratios for early deaths from all causes, cancers, cardiovascular disease and causes considered preventable in Constable are below 100, indicating that the rates of death in under 75s due to these causes are lower than in England.
- Confidence intervals around these estimates are wide for local data, but the SMRs for deaths from all causes and from causes considered preventable are statistically significantly lower than England.
- The standardised mortality ratio data shown here means that for every 100 early deaths from all causes across England as a whole, there are an estimated 58 comparable deaths in Brook.

# Crime & Community Safety



- Crime levels in Constable are low compared to both the district and county averages, with around 26 crimes per 1,000 residents in the division in the 12 months to the end of January 2026, compared to 42 in Babergh and 57 countywide.
- All types of crime occur at a lower rate in the division than the district and county average.
- By far the most common type of crime recorded during this period was violence and sexual offences, which accounted for around half of all recorded crimes in the division.

## Additional Information

### Parishes in Division

- |                         |                    |
|-------------------------|--------------------|
| Bentley                 | Polstead           |
| Capel St. Mary          | Shelley            |
| East Bergholt           | Stoke-by-Nayland   |
| Higham                  | Stratford St. Mary |
| Holton St. Mary         | Wenham Magna       |
| Nayland-with-Wissington | Wenham Parva       |

## Data sources

Category	Indicator	Source
Demographic Profile	Quinary population table 2024	ONS 2024 mid-year population estimates
	Population pyramid 2024	ONS 2024 mid-year population estimates
	Ethnicity 2021	ONS 2021 Census
Economy	Employment by broad industrial sector 2024	ONS Business Register and Employment Survey via NOMIS
Labour market	Claimant count: The number of people claiming Jobseeker's Allowance plus those who claim Universal Credit who are out of work (% 16-64 population) January 2021-February 2026	DWP via NOMIS
Education	School information and attainment 2023-2025	Suffolk County Council CYP iHub
	% 16-17-year-olds NEET (Not in Employment, Education or Training) March 2021 to February 2026	Suffolk County Council CYP iHub via the Suffolk Observatory
Deprivation	Index of Multiple Deprivation 2025	Ministry of Housing, Communities and Local Government
Health	Life expectancy at birth 2016-2020 (2018-2020 for comparator areas)	Office for Health Improvement and Disparities
Health	Standardised mortality ratio for deaths from all causes, cancer, cardiovascular disease, and from causes considered preventable (under 75 years), 2016-2020 (2019-2023 for comparator areas). The standardised mortality ratio is the ratio of observed deaths in the study group to expected deaths in the general population	Office for Health Improvement and Disparities
Community Safety	Recorded crime rate per 1,000 resident population February 2025 to January 2026	Data.police.uk via the Suffolk Observatory

For more data and information about Constable Electoral Division, see the Suffolk Observatory [www.suffolkobservatory.info](http://www.suffolkobservatory.info)

