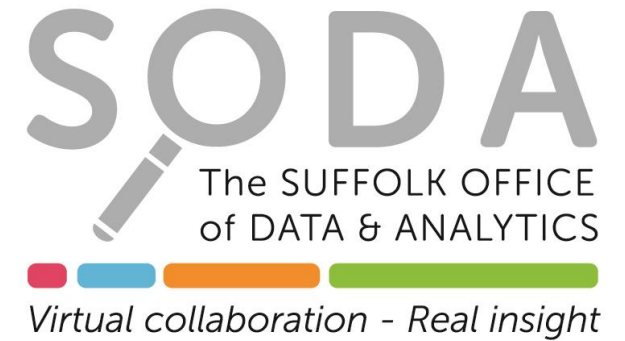


# Serious Violence Duty

## Strategic Needs Assessment Refresh

January 2026



### Authors

Michaela Breilmann, Manager  
Suffolk Office of Data & Analytics

Stephen Parsons, SODA Advanced  
Analyst & Researcher

### Contributions

Kit Day, Senior Analyst, Suffolk  
County Council (Public Health &  
Communities)

# Content

|   |         |
|---|---------|
| 1. Introduction   | Page 3  |
| 2. Note on data   | Page 4  |
| 3. Executive Summary  | Page 5  |
| 4. High-level overview of prevalence of Serious Violence risk and protective factors in Suffolk | Page 9  |
| 5. SV In Suffolk – What? Where? When  | Page 19 |
| 6. SV In Suffolk – Who?   | Page 31 |

# Introduction

- The Home Office (HO) enacted the new Serious Violence Duty (SVD) on the 31st of January 2023. The duty was brought onto a range of authorities, including Police, Justice, Fire & Rescue, Health and Local Authorities (LAs). The duty is for these services working together to share information, allowing for targeted interventions, where possible through existing partnership structures, to collaborate and plan to prevent and reduce serious violence within their local communities.
- The duty holders across Suffolk came together in the Suffolk Serious Violence Partnership, which has worked together and has met regularly since mid-2022.
- The partnership commissioned the Suffolk Office of Data & Analytics (SODA) to produce the [Strategic Needs Assessment](#) (SNA) for the Suffolk System, which was used to develop the [Suffolk Strategy](#).
- The SODA SVD SNA provided an overview of the risk and protective factors around serious violence, set in the context of Suffolk, established the current picture of serious violence in Suffolk, profiled who is at risk of serious violence, and provided case studies on what works in preventing/reducing SV.
- SODA is continuing to support the Suffolk SV Partnership by updating the evidence base around risk and protective factors as well as the latest picture of prevalence of SV Crime across the county.
- The following includes a high-level summary of the prevalence of risk factors, with the detail being available through an [interactive dashboard](#).
- This report also provides an overview of the trends in SV Crimes between 2018/19 and 2025/26.

# Note on Data

## Public Data

- Such as from the ONS, DfE, DWP, NHS, etc., is not always available at lower geographical levels and often published with a time-lag.
- In addition, data variables around demographics, especially around age and ethnicity are not always consistent, i.e., some data is published at single age, while others summarise data into different age bands. The same is true for ethnic categories, which can come at different granularity, depending on the data source.
- Local data has its limitations and is not available for all the risk/protective factors for Serious Violence.
- We have included the latest available data and have attempted to provide the most detailed age breakdowns as possible.

## Suffolk Police Data

- [The Suffolk Serious Violence Duty Partnership agreed on what constitutes SV in Suffolk and based on this definition we identified 359 Home Office Offence Codes, deemed as serious offences or linked to serious offences.](#) We have collated data relating to these offences starting April 2018 to the end of September 2025. The Police data also included a Knife Crime flag for each offence, and a Domestic Violence flag for each offence, enabling us to build a picture of knife crime and DA in Suffolk.
- Due to the structure of the data, it is impossible to report on individuals without double counting. An individual can be included several times within the data, because they
  - have committed multiple offences
  - are named in different roles for the same crime, so for example a person
    - can both be an involved party and a witness to a single offence, or
    - be the victim and the reporting person, or
    - be victim and suspect, e.g., where there are two people claiming to be victim, but are accused by the other as the perpetrator.
- Also, data is incomplete, for example, 888 out of 31,843 records (3%) relating to SV crimes in 2025/26 have no date of birth, while 13,370 (42%) of records have no ethnicity. Therefore, we are reporting on age only and as for the SVD SNA represent the data in proportions rather than absolute numbers.
- Due to the timing of this report, we have analysed the data for [each financial year based on April to September dates to allow for annual comparisons.](#)
- Due to changes in recording practice, the analysis of the SV Police data by daypart is restricted to October 2024 – September 2025.

## Suffolk Youth Justice Data

- [The definition of Serious Youth Violence by the Youth Justice Board only includes Drugs, Robbery or Violence Against the Person offences with a seriousness score of 5 or more](#) (which is therefore used for the Suffolk Youth Justice data).
- Due to the nature of the Youth Justice data, the [analysis is based on full financial year](#) – up until FY 2024/25.

# Executive Summary

---

There are many risk factors in a person's life that can threaten development, limit social and economic opportunities, increase the likelihood of mental and physical health problems, criminal involvement, substance misuse, or exploitation or abuse in later life.

- **Low Educational Achievement** is an important risk factor for Serious Violence, since its impact can be seen throughout a person's life. For example, in Suffolk Foundation Stage (aged 5) and A-Level (aged 18) pupils' attainment reduced after the COVID-19 pandemic and have yet to recover. Also, for Year 6 (aged 11) pupils, there is a 6% attainment gap between the lowest and highest performing districts. And for GCSE (aged 16) there is a 27% attainment gap between pupils from the highest (Asian) and lowest (Black) performing ethnic backgrounds.
- Poor educational outcomes can lead to **employment** issues as young people enter adulthood. In 2025, 5.2% of 16–17-year-olds were classed as NEET in Suffolk, which is in line with East of England averages and lower than the England average. The rate of those classed as unemployed (i.e., those claiming Universal Credit for being unemployed or Jobseeker's Allowance) is much higher for young people aged 18-24 (4.4% for Suffolk) than for all those aged 16 and above (2.1% for Suffolk). There is also a significant regional variation when we look at unemployment rates at neighbourhood levels.
- Money and status and growing up in **poverty** can also be motivating drivers for getting involved in crime. Wages across Suffolk are consistently below those of England overall and proportionally, households with children are more likely to be on Universal Credit, either due to being out of work, or because their income needs 'topping up' with benefits. In October 2024, on average 22.5% of Suffolk's pupils (22,423) were eligible for Free School Meals, though in some neighbourhoods this can be over 40%.
- **Children and adults in Social Care** are amongst the most vulnerable groups in society. Reasons for children and young people being taken into care vary, but most of these have been identified as risk factors for serious violence. Since 2020, the rate of Children in Need in Suffolk continues to be above the regional, but below the national average. Ethnic minorities are significantly over-represented among Children in Care, with Black children being the most over-represented group. Following a drop in the proportion of Adult Safeguarding Concerns and Section 42 Enquiries in Suffolk in 2018-19, these have increased steadily across Suffolk.

# Between April and September 2025, 12,011 Serious Violence Offences were recorded by Suffolk Police. This is the third consecutive annual drop in total SV crimes.

- Between April and September 2025, 38% of all SV offences were assaults **without** injury and 26% assaults **with** injury. While Stalking & Harassment made up 14%, Other sexual offences 7%, Possession of drugs 5%, Rape 4% and Possessions of weapons 3%.
- In general, the **highest number of offences occur in the more urban areas** of Suffolk, such as Ipswich, Lowestoft, Bury St Edmunds, Sudbury, Brandon, Haverhill and Newmarket.
- Over the past year, SV offences that occurred during the **daytime, make up on average 74% of all SV offences**.
  - Between April and September 2025, 40% of Serious Violence Offences committed during the daytime relate to violence without injury, 26% to violence with injury, and 13% to stalking & harassment.
  - While 33% of Serious Violence Offences committed at night-time relate to violence without injury, 26% to violence with injury, and 16% to stalking & harassment. 8% and 6% relate to Other sexual offences and Rape respectively.
- The top 5 Police **outcomes** for SV offences are:
  - 35% Named Suspect Identified, Evidential Difficulties Prevent Further Action, Victim Does Not Support (Or Has Withdrawn Support From) Police Action
  - 15% Named Suspect Identified, Victim Supports Police Action, but Evidential Difficulties Prevent Further Action
  - 14% Further action resulting from the crime report will be undertaken by another body or agency subject to the victim (or person acting on their behalf) being made aware of the act to be taken
  - 10% Charged/Summoned/Postal Requisition and Charged/Summons - alternate offence (Offender has been charged under the alternate offence rule)
  - 10% Investigation Complete; No Suspect Identified.

# Overall, persons involved in SV Crimes continue to be younger than the overall Suffolk population

- All groups of under 30s are over-represented in the Police data, in 2025/26, 46% were under the age of 30, while this group only makes up 31% of Suffolk's population.
- This means that the under 30s are over-represented for all SV categories (except Arson & Criminal Damage). Misc. crimes against society, drug, sexual and possession of weapon offences are the categories with the highest proportion of under 30s.
- 7% to 8% of SV crime **suspects** tend to be between 16 and 18 years old, though this group only makes up 3.3% of Suffolk's population. Around 11% of suspects are between 19 and 24 (compared to 5.4% population) and 10% of suspects are 25-29 (5.7% in population).
- The picture is almost identical for **victims** of SV, with around 6% of SV crime victims being between 16 and 18 years old (3.3% of Suffolk's population), around 11% being between 19 and 24 (compared to 5.4% population) and, 10% being 25-29 (5.7% in population).
- Compared to all SV Crimes, the number of under-30s are proportionally **higher for SV Knife Crime** and hence are disproportionately even higher compared to the Suffolk total population.
- The number of under-30s are also **over-represented for SV crimes that include Domestic Abuse**.
- Based on the Suffolk SV definition, Suffolk Police recorded 3,224 SV offences that include at least 1 suspect under the age of 19 in 2024/25. While Suffolk Youth Justice recorded 24 Serious Youth Violence offences (i.e., Drug, Robbery or Violence Against the Person offences with a seriousness score between 5 and 8).
- CYP involved in SV are significantly more likely to have one or more of the key risk indicators than the relevant Suffolk population. For example, they are more likely to be absent, suspended or excluded from school, are in receipt of free-school meals or have Education, Health & Care Plans. Individual case studies often show a link to unstable family/parental relationships.

# SV risk and protective factors

---

There are many risk factors in a person's life that can threaten development, limit social and economic opportunities, increase the likelihood of mental and physical health problems, criminal involvement, substance misuse, or exploitation or abuse in later life.

- There is a large body of research on factors that predict, i.e., those which can increase the likelihood of violence, or protect, i.e., those which can reduce the likelihood of violence.
- These risk factors exist at three different levels: **INDIVIDUAL**, **INTERPERSONAL**, and **COMMUNITIES / SOCIETY** – and a whole range of factors have been linked with both perpetration and victimisation of violent crime and violent behaviour.

#### Risk factors at the individual level

Individual factors emerged as the most powerful risk indicators for serious violence for children and young people (ages 7-25). Risk factors are age specific and change over time. For example, substance misuse was a strong risk factor for youth violence for children aged seven to nine years, but this decreased as children got older.

- Early involvement with alcohol, drugs & tobacco
- Low intelligence & educational achievement
- Low commitment to school & school failure
- Involvement in crime
- Unemployment
- Exposure to violence in the family

Individual level risk factors for serious violence also include some demographics, i.e., **gender, age and ethnicity.**

#### Risk factors at the interpersonal level

Young people aged 15 and under were more vulnerable to family level risk factors of family disruption and poor supervision. The most powerful risk factors for serious violence for children and young people aged 7-15, were poor relationships with peers or having delinquent peers. Though caution is needed against adopting a 'dysfunctional family' stereotype. The absence of family supervision and/or boundary setting may not constitute neglect but rather socio-economic factors, such as work commitments or difficulties monitoring children's activities away from the home environment

- Poor monitoring & supervision of children by parents
- Harsh, lax or inconsistent parental disciplinary practices
- A low level of attachment between parents & children
- Parental substance abuse or criminality
- Parental depression
- Low family income
- Unemployment in the family
- Associating with delinquent peers and/or gang membership

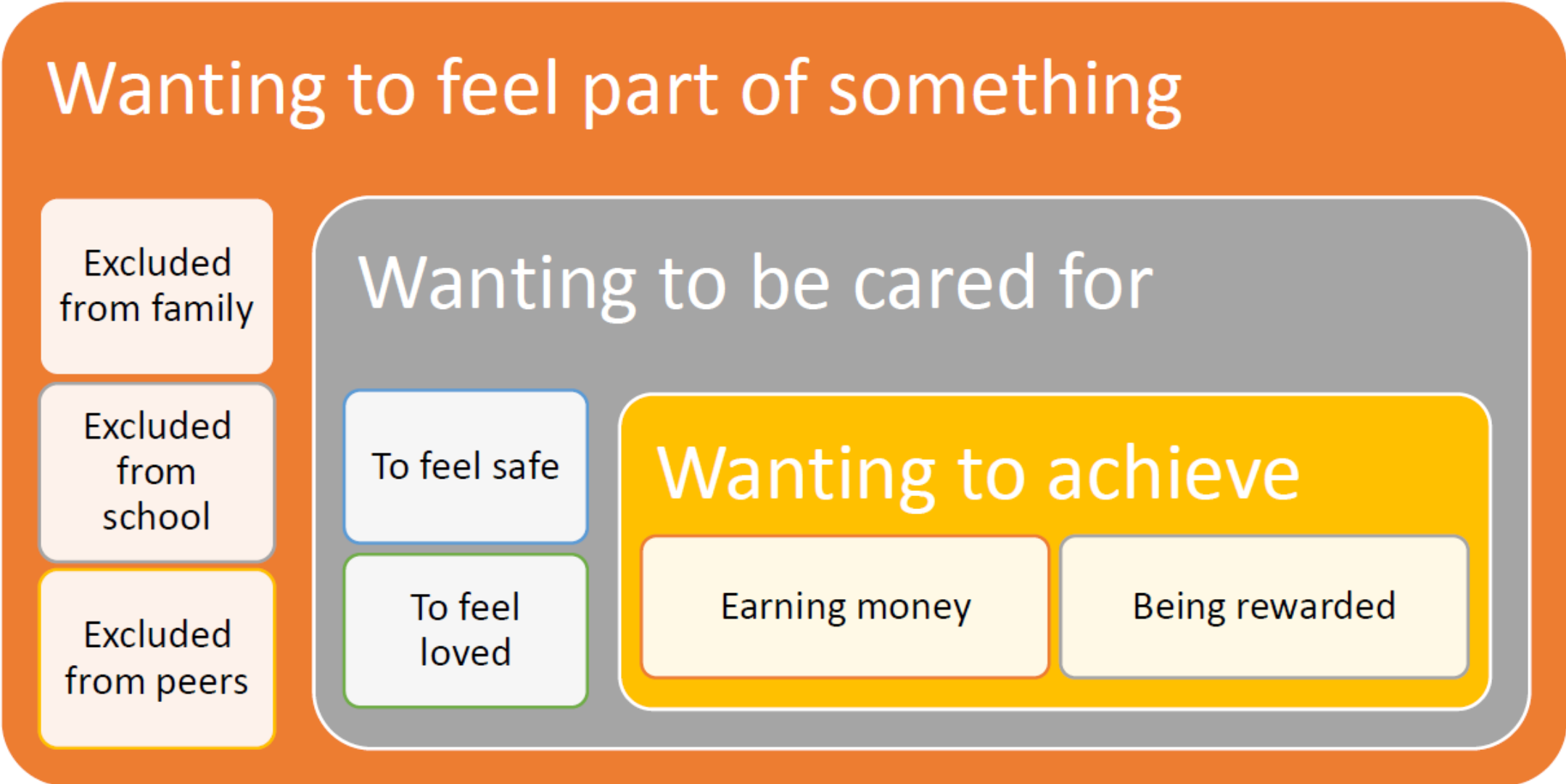
#### Risk factors at the community & wider society level

Poverty serves to marginalise young people with violence used as a way of retaining feelings of self-worth. However, while low deprivation can be a protective factor, living in an affluent household did not protect a young person with a high level of other risk factors.

- Access to & misuse of alcohol
- Access to & misuse of firearms
- Gangs & a local supply of illicit drugs
- High income inequality
- Poverty
- Quality of governance, incl. laws & policies, e.g., education, social protection

- The evidence assessing **protective factors** is more limited than that for risk factors, and most factors are often the opposite of the risk factors. However, it is important to include protective factors as even in high-risk groups, over half will not engage in serious violence.
- Overall, the evidence base has limitations, as it is not always clear whether factors are predictors or are just markers, present due to victimisation or other circumstances.

Essex County Council, as part of the Pathfinder project (which Suffolk also contributed to), summarised the motivating reasons for young people getting involved in gangs, criminal exploitation and serious violence as follows:



## Using the evidence on risk / protective factors

- The number of different risk factors for serious violence and the complex relationships that exist between them means it is hard to know exactly which factors may be causal, and which are simply markers. This makes it difficult to decide which factors to target.
- One consistent finding is that the presence of multiple risk factors increases the risk of offending. Therefore, identifying the number of risk factors an individual experiences / is exposed to should determine those at greater risk, and used to design and target interventions.
- HM Government states that: *"...perhaps the simplest way to improve our knowledge and reduce serious violence may be to test preventative interventions better."*
- As pointed out in the SVD SNA published last year, [local data suggests that by and large the \(inter-\) national evidence holds true for Suffolk also.](#)
- The following is a high-level summary of the prevalence of risk factors - the detail is available [here](#).

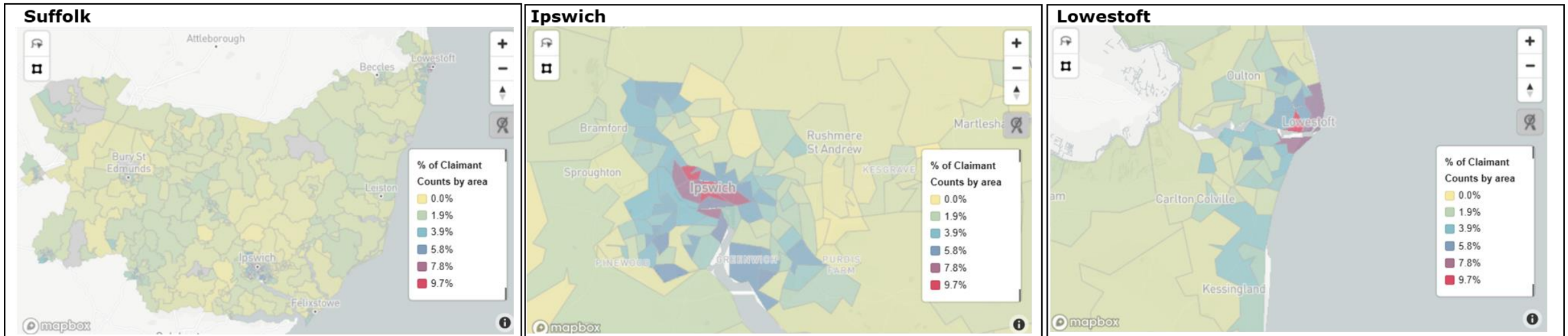
**Low Educational Achievement** is an important risk factor for Serious Violence, since its impact can be seen throughout a person's life. Engaging positively with school gives children the opportunity to establish positive relationships with authority figures - attitudes which they take through to adulthood - and provides young people with qualifications which decrease the risk of them becoming unemployed and falling into poverty.

- Foundation Stage (aged 5) pupils' attainment reduced in Literacy and Mathematics after the COVID-19 pandemic and has yet to recover. In Suffolk, pupils from Asian, Black and Other backgrounds have lower attainment than those from White or Mixed/Multiple backgrounds.
- for Year 6 (aged 11) pupils, there is a 6% attainment gap between the lowest and highest performing districts. The attainment gap for ethnicities with lower attainment has narrowed but not closed.
- GCSE (aged 16) pupils' attainment is lower in Suffolk than national averages. There is a 27% attainment gap between pupils from the highest (Asian) and lowest (Black) performing ethnic backgrounds.
- A-Level (aged 18) pupils' attainment has dropped after the COVID-19 pandemic and is yet to return to pre-pandemic levels. There is also a 5% gap in the proportion of pupils achieving AAB between the lowest (Babergh) and highest (Ipswich and Mid Suffolk) performing districts.
- Compared to other ethnicities, pupils from Other backgrounds are more likely to be permanently excluded, and pupils from White backgrounds are more likely to both miss school sessions and be excluded. Pupils in Ipswich and East Suffolk are also more likely to be excluded than pupils from other districts.
- Suffolk's population is generally less qualified than regional and national averages, with lower proportions of people with a degree level qualification or above.

Poor educational outcomes can lead to **employment** issues as young people enter adulthood. It can also limit the opportunities of young people to go on to attain further or higher educational qualifications. To track this across time, we measure the rate of 16- to 17-year-olds who are Not in Education, Employment or Training (NEET) as well as the overall Unemployment Rate for those aged 16 or above.

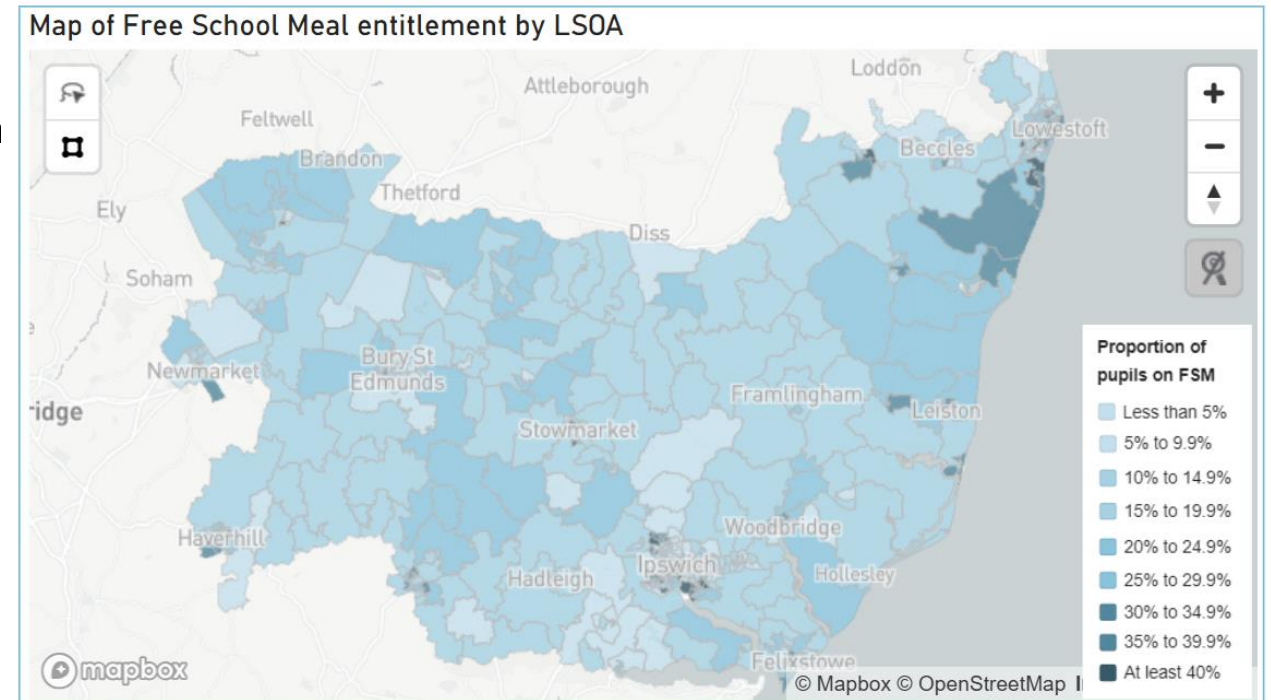
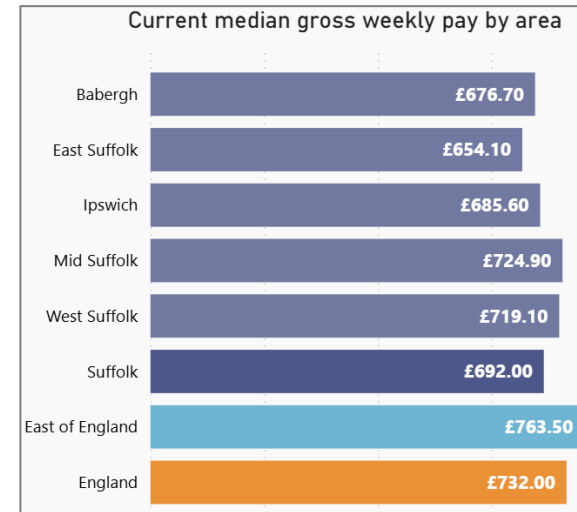
- In 2025, 5.2% of 16–17-year-olds were classed as NEET in Suffolk, which is in line with East of England averages and lower than the England average.
- The rate of those classed as unemployed (i.e., those claiming Universal Credit for being unemployed or Jobseeker's Allowance) is much higher for young people aged 18-24 (4.4% for Suffolk) than for all those aged 16 and above (2.1% for Suffolk). Among the 18-24 age group, claimant rates are also higher for those living in East Suffolk (5.1%) and Ipswich (6.0%). Claimant rates for those aged 16 or above are also high in Ipswich (3.6%).
- There is significant regional variation when we look at unemployment rates at the Lower Super Output Area (LSOA) level. In many of the most sparsely populated rural areas of Suffolk, unemployment rates for those aged 16 and above are at less than 1%. This is compared to areas of Ipswich and central Lowestoft where unemployment rates are much higher.

### Maps of Claimant Count (16+), by LSOA, August 2025

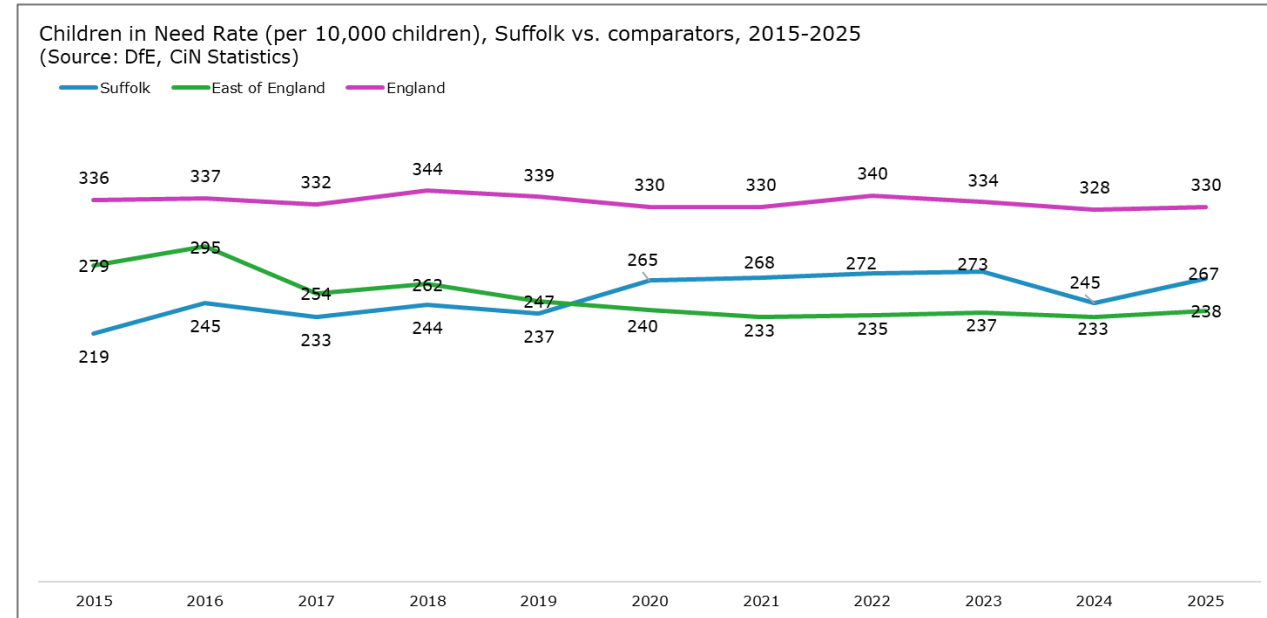


Money and status and growing up in **poverty** can also be motivating drivers for getting involved in crime, including serious violence; wanting to earn money and buy new things, wanting to impress peers, to be important, to be proud, and to have a reputation are often out of reach for some young people.

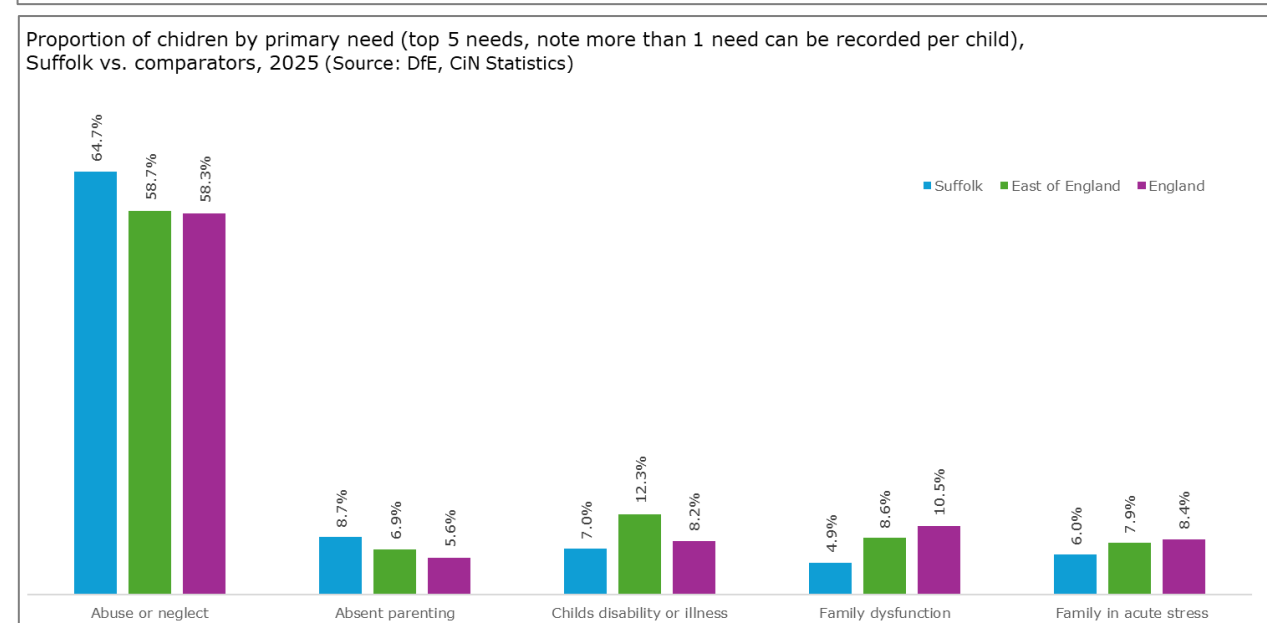
- Wages across Suffolk are consistently below those of England overall – in 2023-24 median gross weekly pay in Suffolk was £40 lower than the England average, and £72 lower than the East of England average.
- Proportionally, households with children are more likely to be on Universal Credit, either due to being out of work, or because their income needs ‘topping up’ with benefits.
- While around 33k of Suffolk’s children lived in relative low-income families 2023/24. The proportion of these families who are out of work has remained relatively steady over the past 10 years. The proportion of lone-parent families in relative low-income has increased over the past 10 years, compared to families with couples.
- In October 2024, on average 22.5% of Suffolk’s pupils (22,423) were eligible for Free School Meals, though in some neighbourhoods this can be over 40%.



**Children and adults in Social Care** are amongst the most vulnerable groups in society. Reasons for children and young people being taken into care vary, but most of these have been identified as risk factors for serious violence.



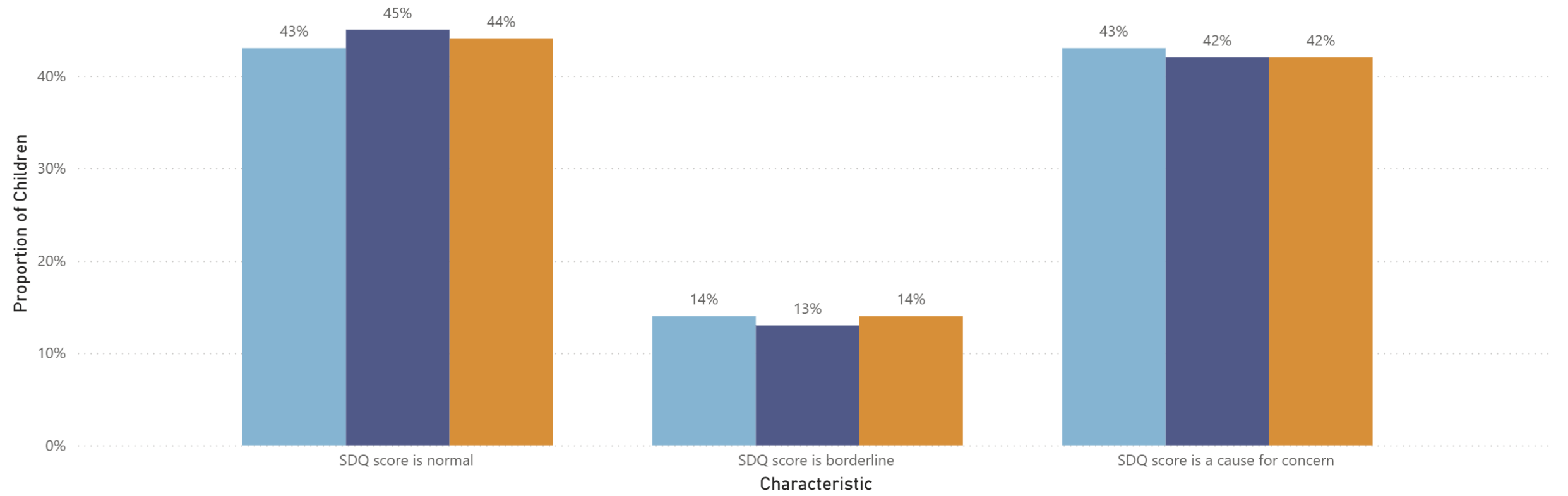
- Since 2020, the rate of Children in Need in Suffolk continues to be above the regional, but below the national average.
- The Primary Need of children assessed by social workers in Suffolk in 2025 is Abuse/Neglect (65%), which is above both regional and national averages. Other prominent needs being Absent Parenting (9%) and Child Disability/Illness (7%).
- Ethnic minorities are significantly over-represented among Children in Care, with Black children being the most over-represented group.



When Looked After Children complete a Strength and Difficulties Questionnaire – in 2025, 43% of children have a score which is a cause for concern, which is lower than last year and now in line with regional and national averages.

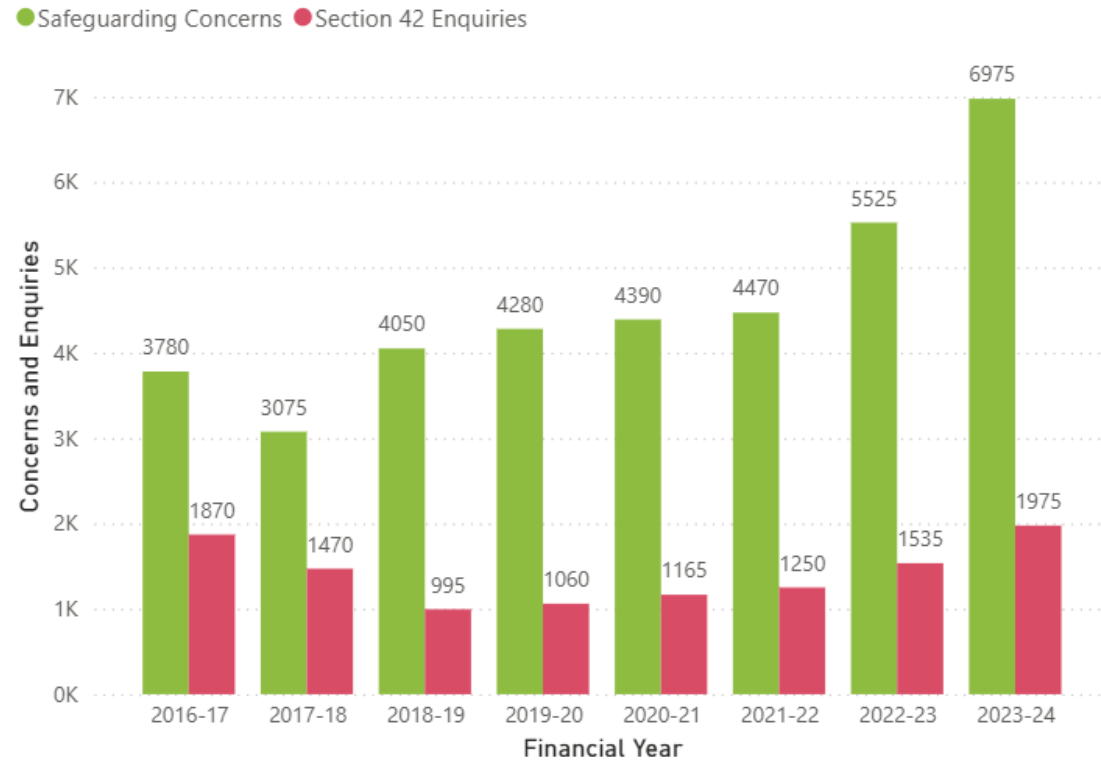
Strength and Difficulties Questionnaire (SDQ) Scores, Suffolk, 2025

Area ● East of England ● England ● Suffolk

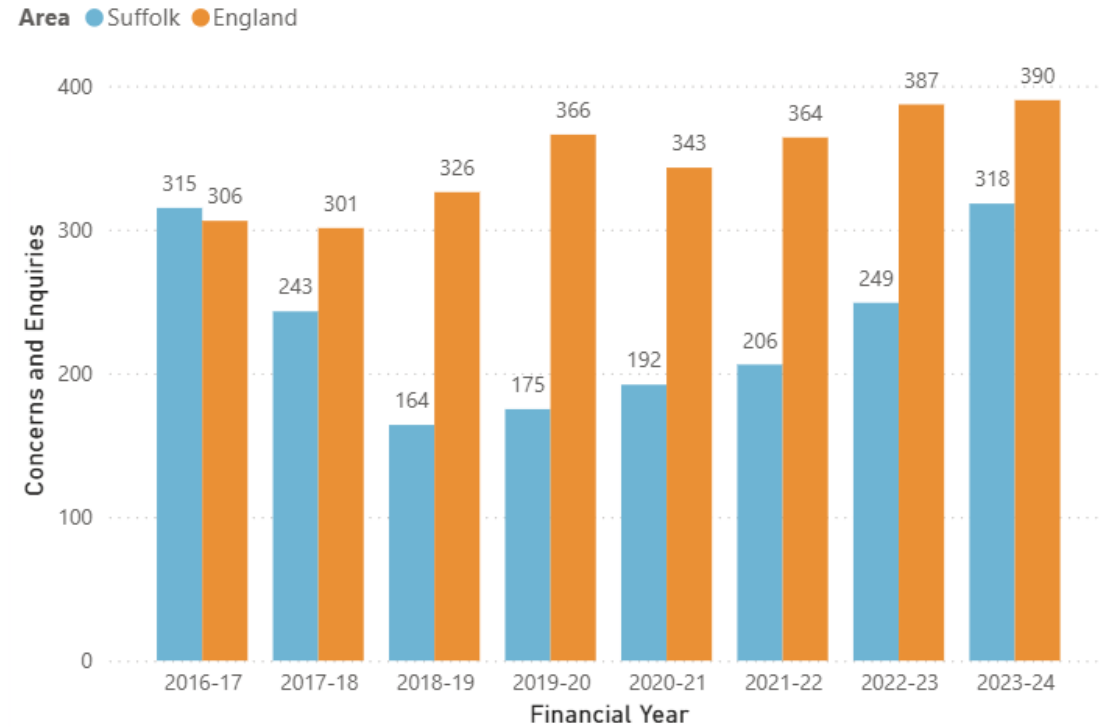


Following a drop in the proportion of Adult Safeguarding Concerns and Section 42 Enquiries in Suffolk in 2018-19, these have increased steadily. In 2023-24 these stood at 318 (per 100,000 adults) cases raised. This compares to 390 cases per 100k adults nationally.

Safeguarding Concerns and Section 42 Enquiries, Suffolk, 2016-2024



Safeguarding Concerns and Section 42 Enquiries (per 100,000 adults), Suffolk, 2016-2024



In 2023-24 the primary adult safeguarding concerns in Suffolk were Physical Abuse (625), Sexual Abuse (200) and Psychological Abuse (165).

# Serious Violence in Suffolk

---

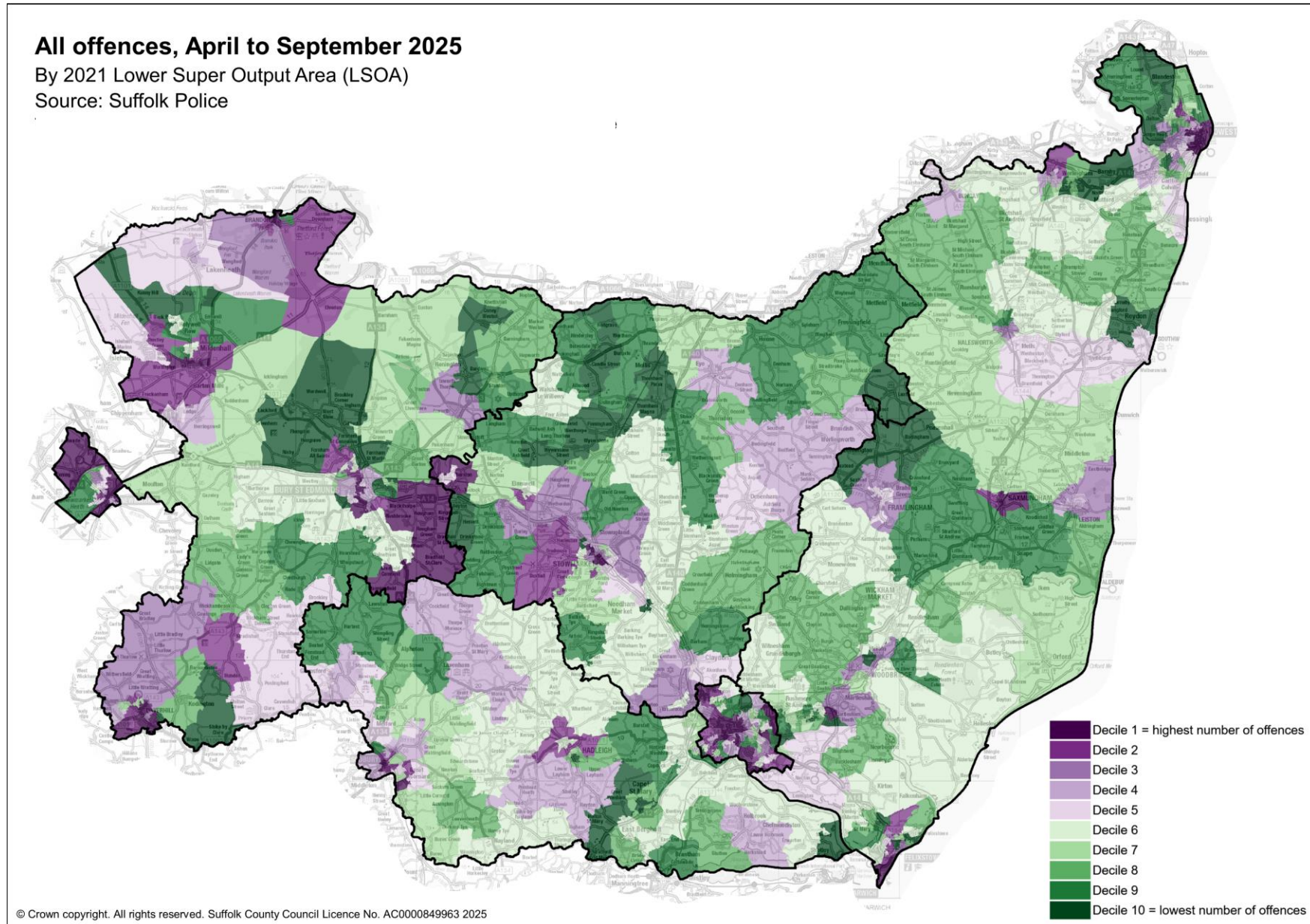
What? Where? When?

Due to the timing of this report, we have analysed the data for [each financial year based on April to September dates](#) to allow for annual comparisons. Based on the selected Home Office Offence Codes the following number of offences, by offence groups, are included in our analysis.

[Between April and September 2025, 12,011 Serious Violence Offences were recorded by Suffolk Police. This is the third consecutive drop in total SV crimes.](#)

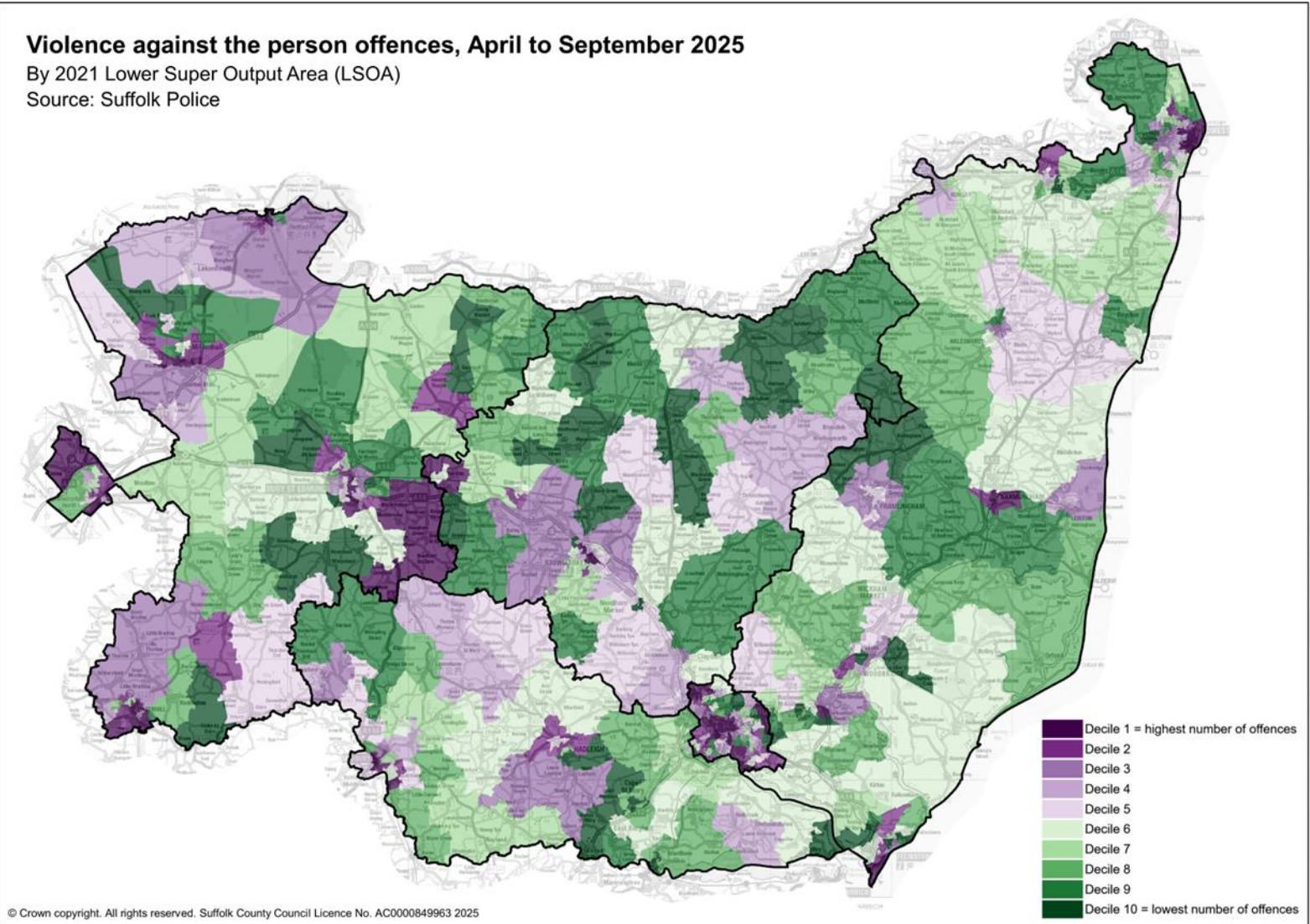
|                                   | 2018/19       | 2019/20       | 2020/21       | 2021/22       | 2022/23       | 2023/24       | 2024/25       | 2025/26       |
|-----------------------------------|---------------|---------------|---------------|---------------|---------------|---------------|---------------|---------------|
| VIOLENCE WITHOUT INJURY           | 3,967         | 4,786         | 4,713         | 4,644         | 5,453         | 4,621         | 4,570         | 4,584         |
| VIOLENCE WITH INJURY              | 3,040         | 3,109         | 2,836         | 2,995         | 3,479         | 3,252         | 3,122         | 3,098         |
| STALKING AND HARASSMENT           | 2,624         | 2,769         | 3,336         | 3,246         | 3,223         | 2,114         | 1,727         | 1,649         |
| OTHER SEXUAL OFFENCES             | 706           | 796           | 638           | 868           | 898           | 817           | 832           | 812           |
| POSSESSION OF DRUGS               | 556           | 662           | 840           | 754           | 681           | 568           | 528           | 570           |
| RAPE                              | 478           | 502           | 429           | 493           | 578           | 475           | 450           | 448           |
| POSSESSION OF WEAPONS             | 229           | 269           | 213           | 240           | 333           | 322           | 322           | 369           |
| TRAFFICKING OF DRUGS              | 143           | 242           | 200           | 221           | 225           | 220           | 201           | 169           |
| ROBBERY OF PERSONAL PROPERTY      | 228           | 276           | 142           | 116           | 147           | 116           | 89            | 108           |
| RACE OR RELIGIOUS AGG PUBLIC FEAR | 115           | 119           | 136           | 137           | 131           | 105           | 97            | 108           |
| AGGRAVATED VEHICLE TAKING         | 26            | 32            | 31            | 40            | 30            | 31            | 32            | 22            |
| ARSON                             | 12            | 12            | 20            | 21            | 12            | 23            | 18            | 18            |
| ROBBERY OF BUSINESS PROPERTY      | 17            | 14            | 10            | 10            | 13            | 8             | 6             | 24            |
| BURGLARY - RESIDENTIAL            | 7             | 10            | 13            | 10            | 10            | 11            | 10            | 22            |
| VIOLENT DISORDER                  | 10            | 4             | 6             | 6             | 8             | 8             | 3             | 3             |
| MISC CRIMES AGAINST SOCIETY       | 1             |               | 5             |               | 4             | 3             | 3             | 5             |
| HOMICIDE                          | 5             | 1             | 4             | 5             | 3             | 1             | 4             | 2             |
| CRIMINAL DAMAGE                   | 3             | 4             | 1             | 1             | 3             | 2             | 4             |               |
| <b>TOTAL</b>                      | <b>12,167</b> | <b>13,607</b> | <b>13,573</b> | <b>13,807</b> | <b>15,231</b> | <b>12,697</b> | <b>12,018</b> | <b>12,011</b> |

In general, the highest number of offences occur in the more urban areas of Suffolk, such as Ipswich, Lowestoft, Bury St Edmunds, Sudbury, Brandon, Haverhill and Newmarket.



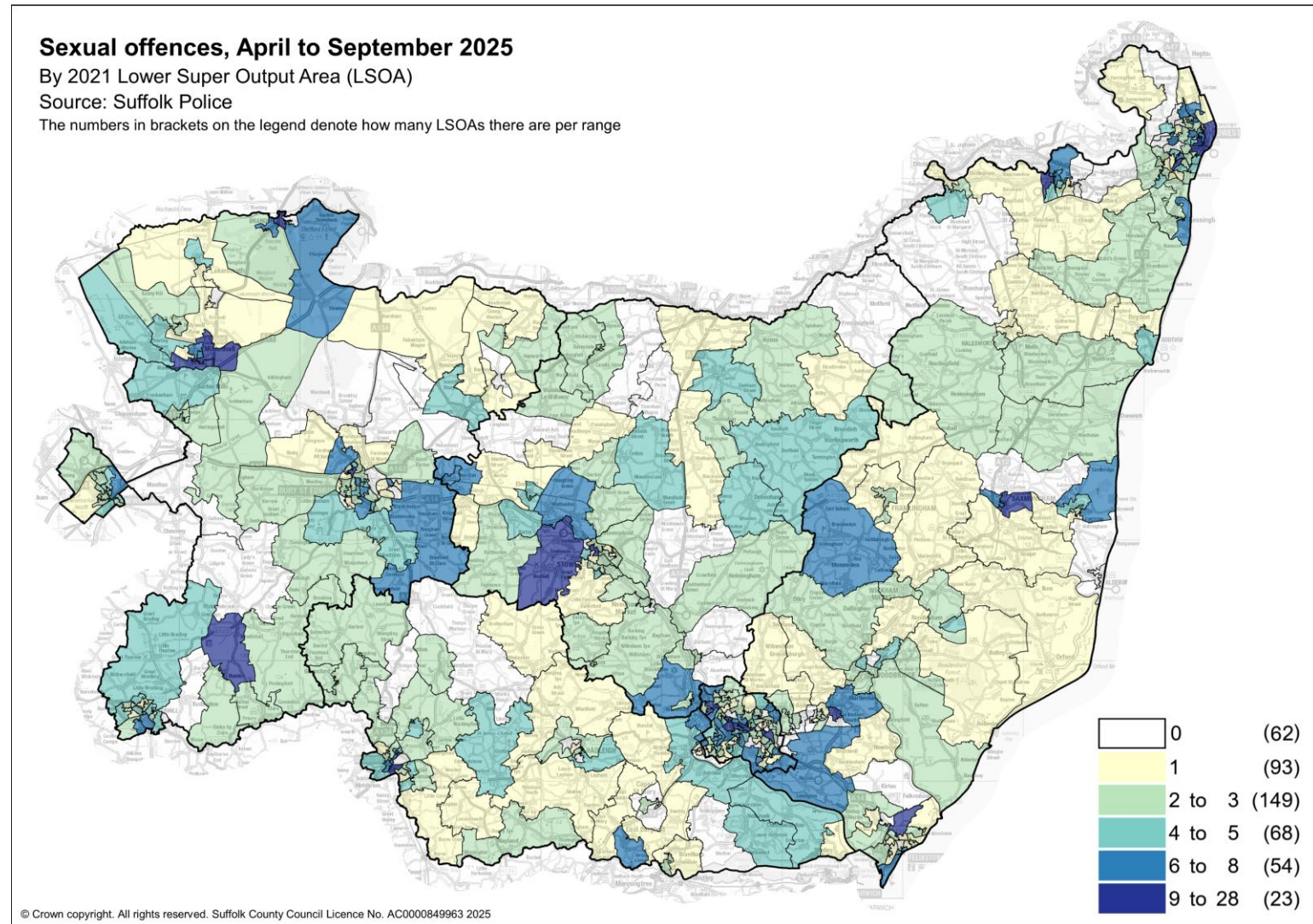
Between April and September 2025, 43% of Violence against the person offences were assaults **without** injury and 31% assaults **with** injury – unchanged from the same period in 2024.

| Violence against the person offences (sub-groups) | 2023/24 | 2024/25 | 2025/26 |
|---|---------|---------|---------|
| ASSAULT WITHOUT INJURY                            | 4,126   | 4,029   | 4,008   |
| ASSAULT WITH INJURY                               | 3,009   | 2,903   | 2,857   |
| HARASSMENT  | 843     | 895     | 825     |
| STALKING  | 438     | 447     | 484     |
| MALICIOUS COMMUNICATIONS                          | 671     | 192     | 140     |
| ASSAULT NO INJURY – CONSTABLE                     | 187     | 193     | 231     |
| CONTROLLING/COERCIVE BEHAVIOUR                    | 150     | 175     | 190     |
| ASSAULT WITH INTENT TO CAUSE S HARM               | 133     | 137     | 143     |
| THREATS TO KILL                                   | 89      | 108     | 127     |
| CRUELTY TO CHILDREN/YOUNG PERSONS                 | 101     | 109     | 103     |
| ASSAULT WITH INJURY ON A CONSTABLE                | 76      | 39      | 69      |
| KIDNAPPING  | 47      | 54      | 48      |
| MODERN SLAVERY                                    | 30      | 31      | 37      |
| RACE OR RELIGIOUSLY AGG ASSAULT NO INJ            | 28      | 30      | 23      |
| ASSAULT W INJ - EMERGENCY WORK                    | 20      | 25      | 13      |
| RACE/RELIGIOUSLY AGG HARASS                       | 12      | 18      | 10      |
| RACE/RELIGIOUSLY AGG ASSAULT W INJ                | 10      | 11      | 14      |
| CHILD ABDUCTION                                   | 13      | 14      | 7       |
| ATTEMPTED MURDER                                  | 4       | 2       | 1       |
| ENDANGERING LIFE                                  |         | 5       | 1       |
| MURDER  | 1       | 3       | 1       |
| CONSPIRACY TO COMMIT MURDER                       |         | 2       |         |
| MANSLAUGHTER                                      |         | 1       | 1       |



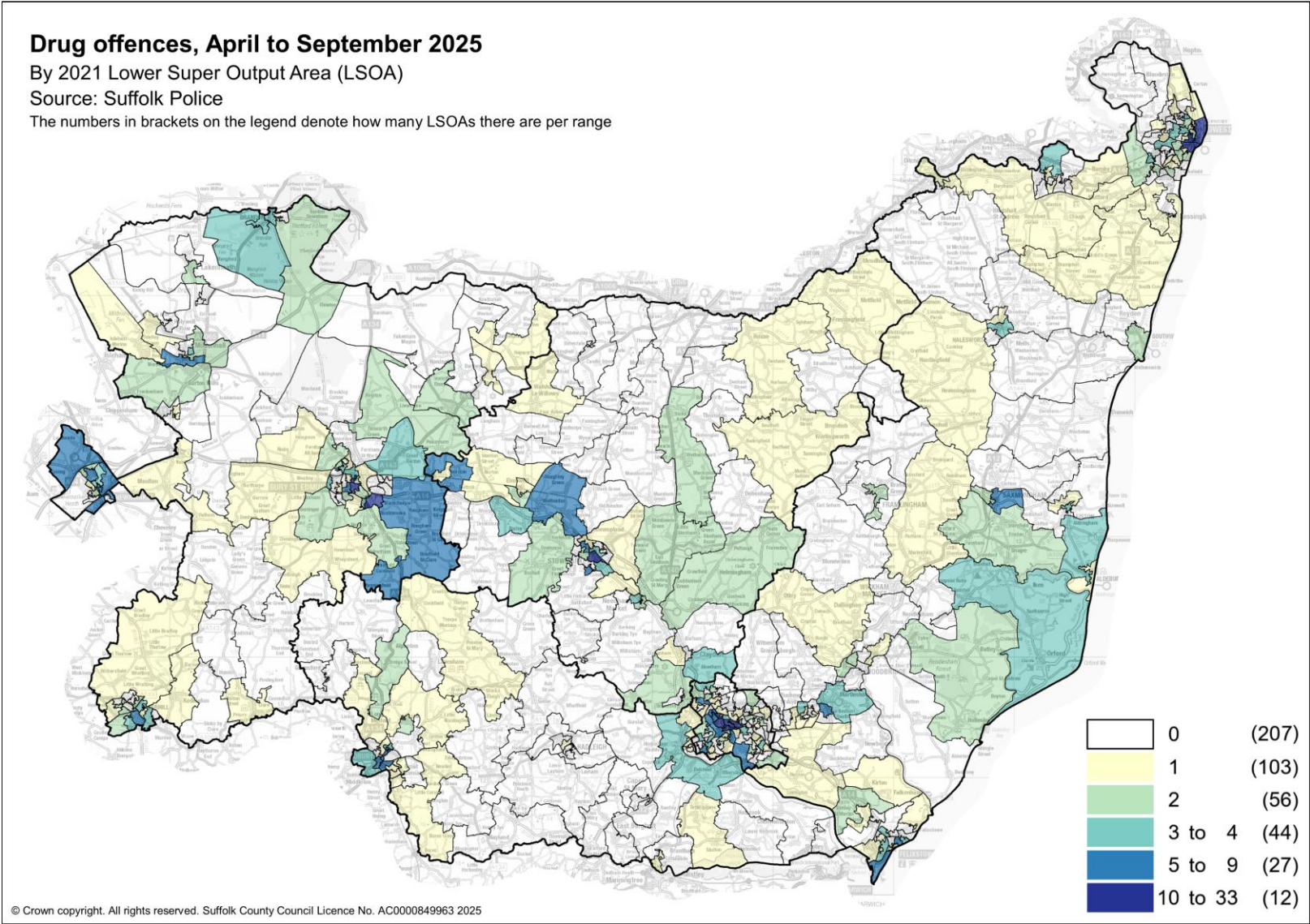
In 2025/26 so far, there have been 1,252 Sexual Offences, with 440 (35%) of Sexual Offences were recorded as rape. 11% of all Rapes were committed to under 13-year-olds, 16%- to 13–16-year-olds, and 74% to over 16-year-olds.

| Sexual Offences (sub-groups)             | 2023/24 | 2024/25 | 2025/26 |
|--|---------|---------|---------|
| SEXUAL ASSAULT ON A F 13 OR OVER         | 338     | 365     | 304     |
| RAPE OF A FEMALE AGED 16 AND OVER        | 313     | 291     | 298     |
| SEXUAL ACTIVITY CHILD UNDER 16           | 106     | 120     | 87      |
| SEXUAL ASSAULT ON A F CHILD UNDER 13     | 104     | 80      | 97      |
| EXPOSURE AND VOYEURISM                   | 75      | 72      | 87      |
| RAPE OF A FEMALE CHILD UNDER 16          | 73      | 77      | 65      |
| SEXUAL ASSAULT ON A M 13 AND OVER        | 56      | 66      | 67      |
| SEXUAL GROOMING                          | 51      | 47      | 48      |
| SEXUAL ACTIVITY CHILD UNDER 13           | 38      | 37      | 55      |
| RAPE OF A FEMALE CHILD UNDER 13          | 40      | 38      | 31      |
| SEXUAL ASSAULT ON A M CHILD UNDER 13     | 33      | 20      | 36      |
| RAPE OF A MALE AGED 16 AND OVER          | 22      | 17      | 26      |
| RAPE OF A MALE CHILD UNDER 13            | 15      | 19      | 16      |
| ABUSE OF CHILDREN THROUGH SEXUAL EXPLOIT | 3       | 8       | 11      |
| INCEST OR FAMILIAL SEXUAL OFFENCES       | 2       | 7       | 8       |
| RAPE OF A MALE CHILD UNDER 16            | 5       | 5       | 4       |
| OTHER MISC SEXUAL OFFENCES               | 2       | 5       | 4       |
| SEX ACTIV WITH A PER MENTAL DISORD       |         | 2       | 6       |
| ABUSE OF POSITION OF TRUST SEXUAL        | 5       | 1       | 1       |
| UNNATURAL SEXUAL OFFENCES                | 2       | 2       | 1       |
| CAUSING SEXUAL ACTIVITY WITHOUT CONSENT  | 2       |         |         |



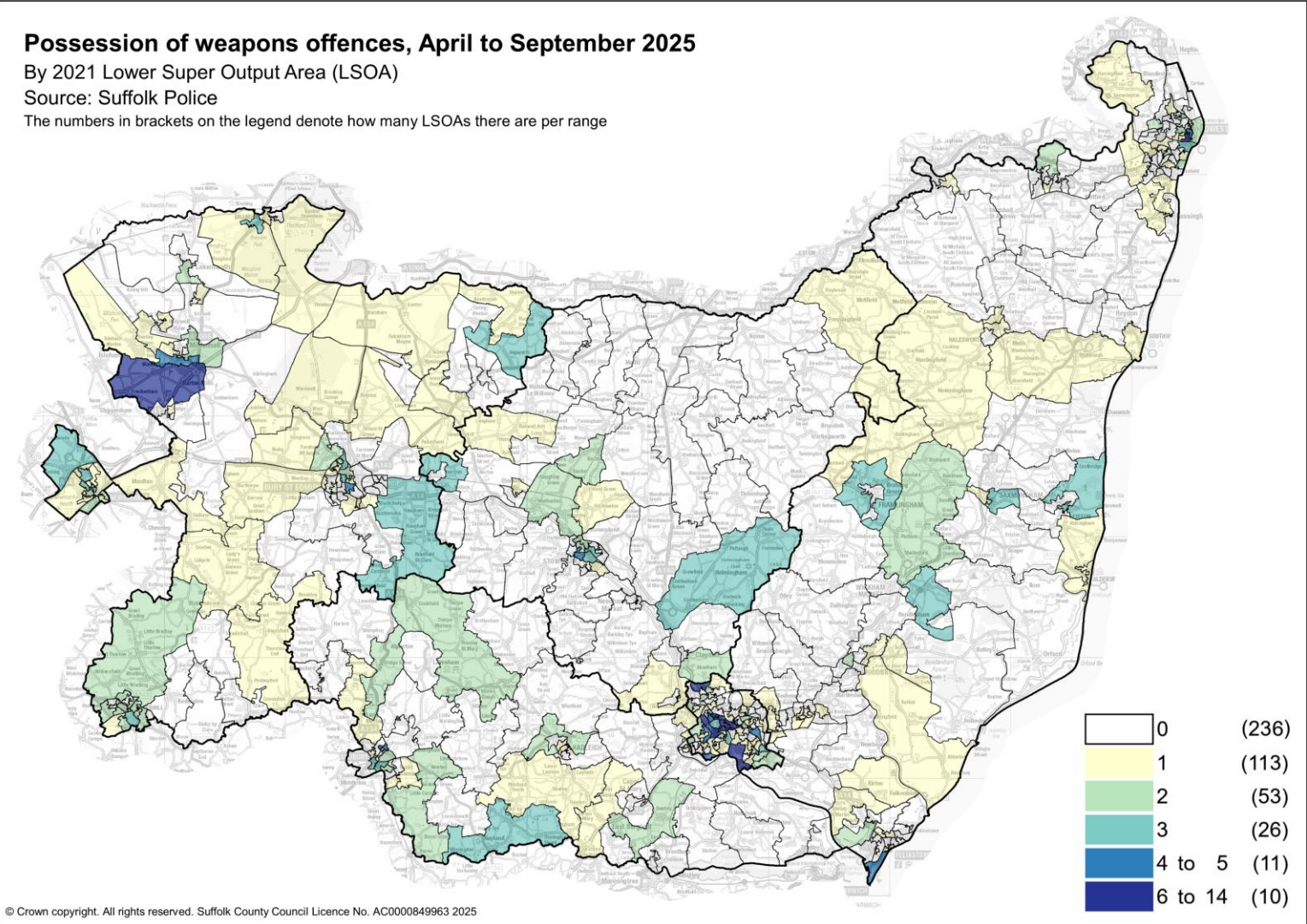
56% of drug offences in 2025/26 relate to the possession of cannabis, while 23% relate to trafficking of drugs.

| Drug Offences (sub-groups)                      | 2023/<br>24 | 2024/<br>25 | 2025/<br>26 |
|---|-------------|-------------|-------------|
| Possession of controlled drugs (Cannabis)       | 395         | 372         | 415         |
| Trafficking of drugs                            | 215         | 197         | 166         |
| Possession of controlled drugs (Excl. Cannabis) | 172         | 153         | 152         |
| Trafficking In Controlled Drugs                 | 5           | 4           | 3           |
| Other drug offences                             | 1           | 3           | 3           |



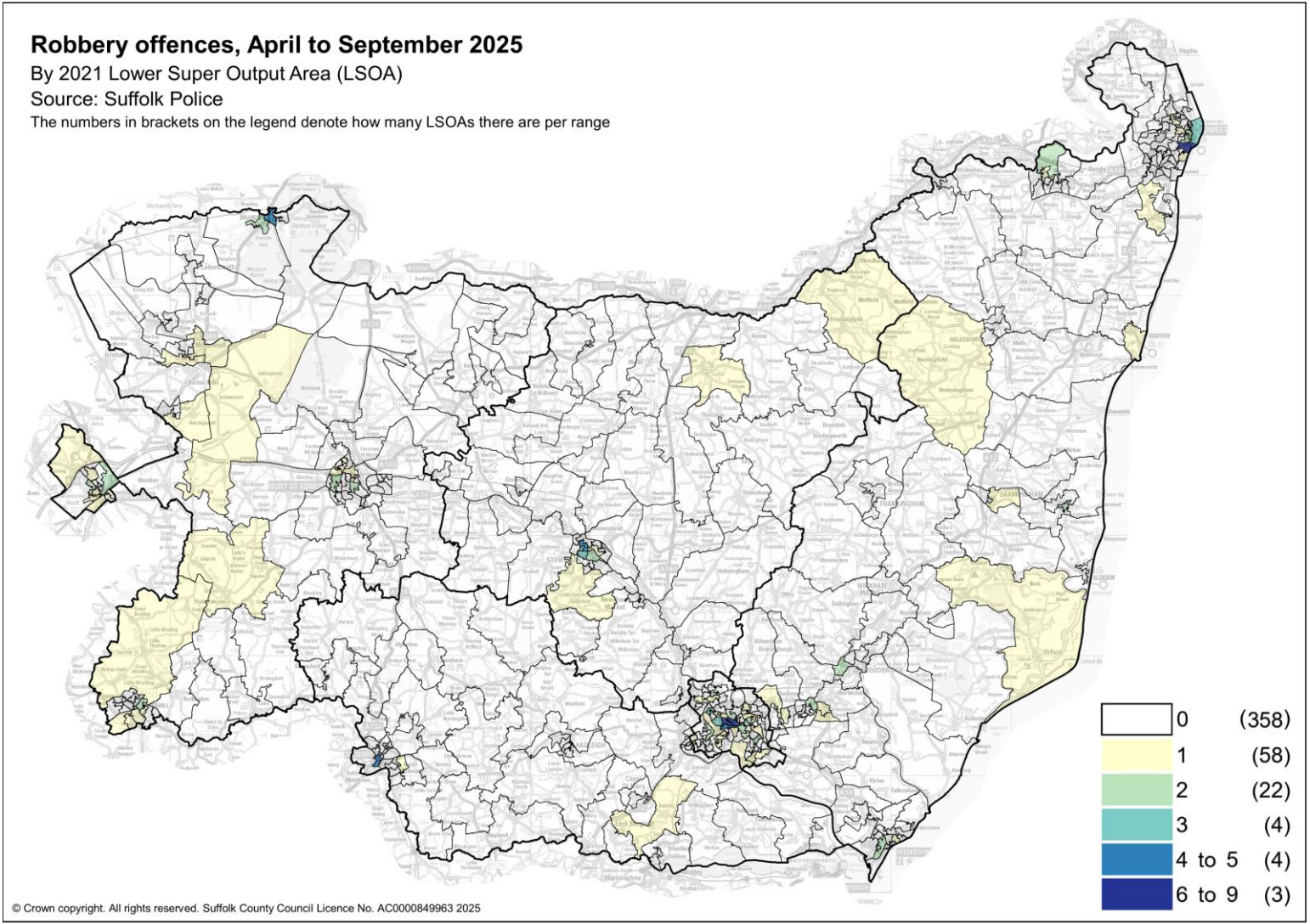
Possession of articles with blades or points increased over the past three years, 149 in 2023, 190 in 2024 and 191 in 2025. However, proportionally this makes up less of all Possession of weapon offences now (52%) than in 2024 (59%). This is because possession of other weapons now makes up a higher proportion of Possession of weapons offences (28% in 2024, 38% in 2025). While offences relating to firearms are at 10% overall (down from 13% in 2024).

| Possession of weapons offences (sub-groups) | 2023/24 | 2024/25 | 2025/26 |
|---|---------|---------|---------|
| POSSESS OF ARTICLE WITH BLADE OR POINT      | 149     | 190     | 191     |
| POSSESSION OF OTHER WEAPONS                 | 136     | 90      | 141     |
| POSSESSION OF FIREARMS OFFENCES             | 21      | 21      | 15      |
| POSSESSION OF FIREARMS WITH INTENT          | 11      | 20      | 19      |
| OTHER FIREARMS OFFENCES                     | 5       | 1       | 3       |



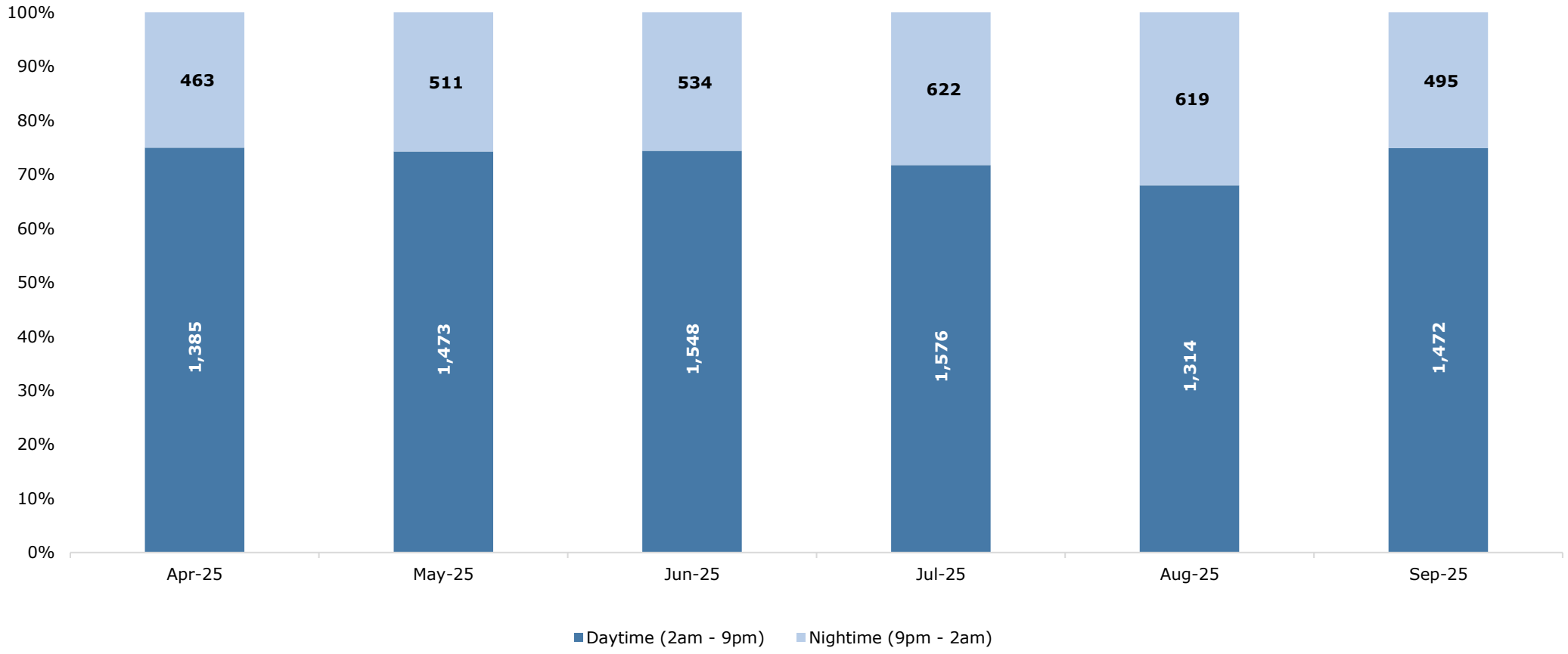
Robberies tend to relate to private/personal property (usually above 80%).

| Robberies (sub-groups)       | 2023/<br>24 | 2024/<br>25 | 2025/<br>26 |
|------------------------------|-------------|-------------|-------------|
| ROBBERY OF PERSONAL PROPERTY | 116         | 89          | 108         |
| ROBBERY OF BUSINESS PROPERTY | 8           | 6           | 24          |



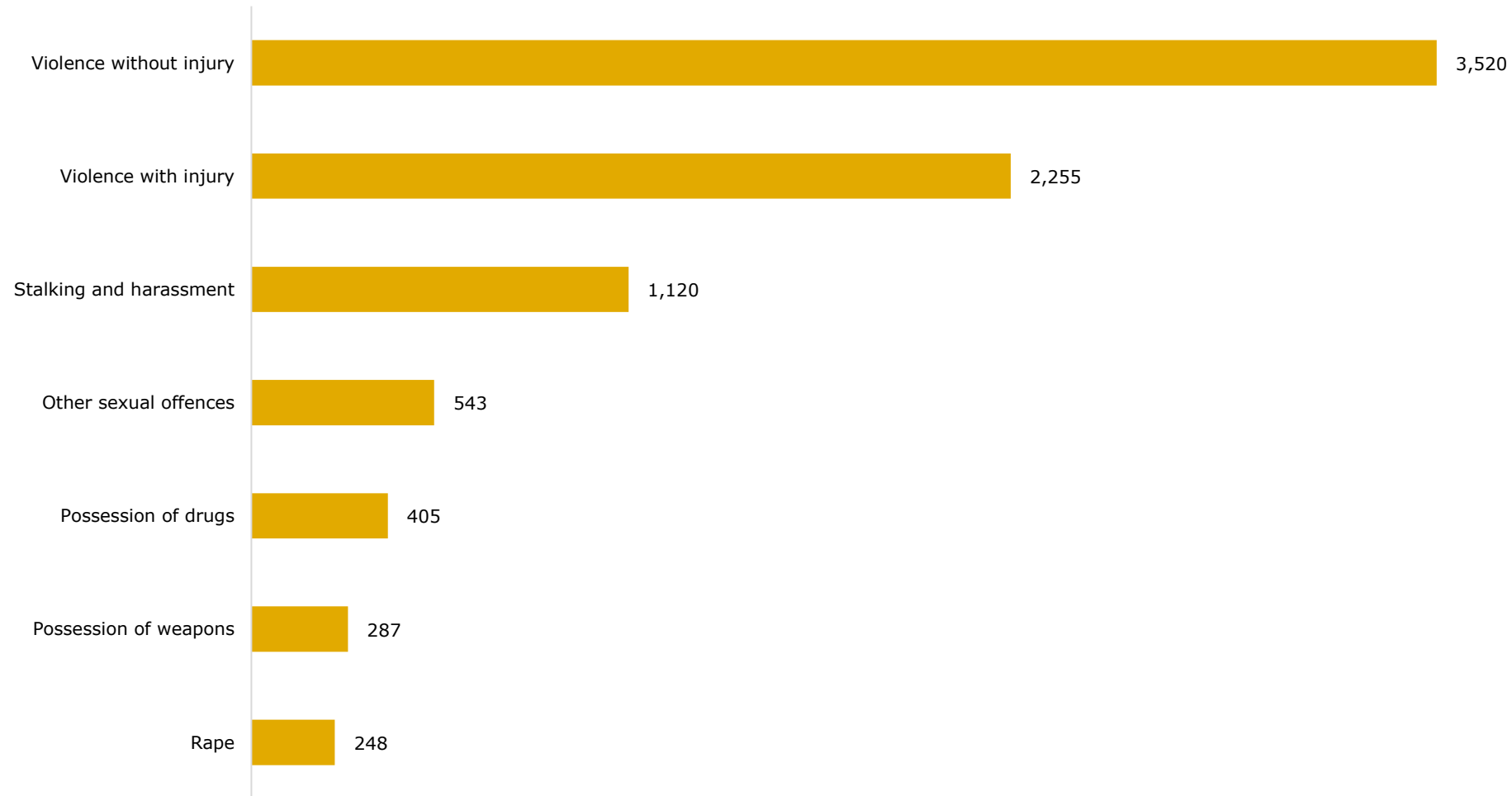
Between April and September 2025, SV offences that occurred during the daytime, make up on average 73% of all SV offences.

**Number & proportion of Serious Violence Offences by daypart, Suffolk, Apr 2025 - Sept 2025**



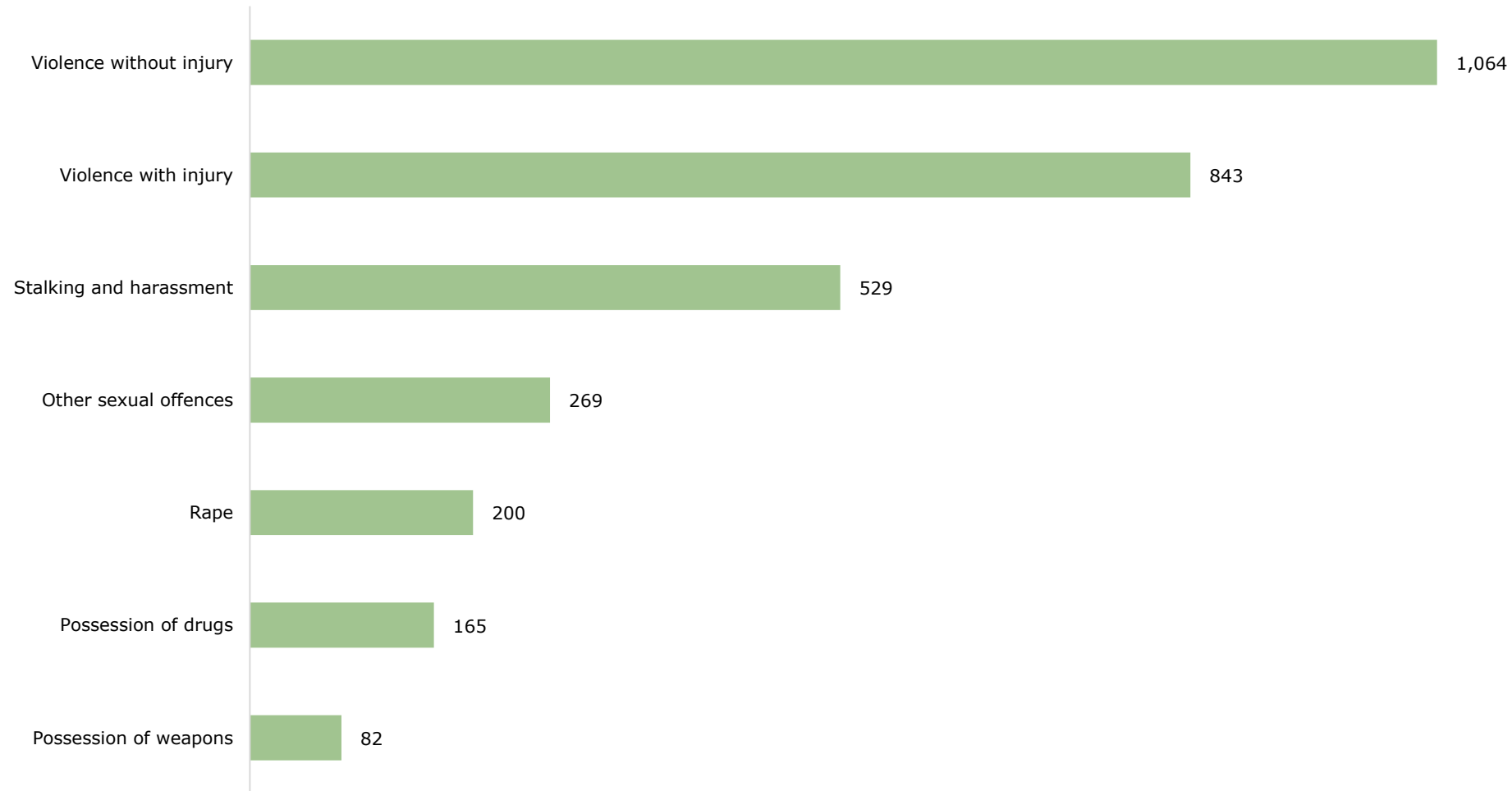
Between April and September 2025, 40% of Serious Violence Offences committed during the daytime relate to violence without injury, 26% to violence with injury, and 13% to stalking & harassment.

**Number of daytime (2am - 9pm) SV offences, top 7 sub-categories, Suffolk, Apr - Sep 2025**



Between April and September 2025, 33% of Serious Violence Offences committed at night-time relate to violence without injury, 26% to violence with injury, and 16% to stalking & harassment. 8% and 6% relate to Other sexual offences and Rape respectively.

**Number of night-time (9pm - 2am) SV offences, top 7 sub-categories, Suffolk, Apr - Sep 2025**



# Police Outcomes for SV Crimes

| <b>Outcomes</b>  | <b>2023-24</b> | <b>2024-25</b> | <b>2025-26</b> |
|--|----------------|----------------|----------------|
| Named Suspect Identified: Evidential Difficulties Prevent Further Action: Victim Does Not Support (Or Has Withdrawn Support From) Police Action  | 33%            | 33%            | 35%            |
| Named Suspect Identified: Victim Supports Police Action But Evidential Difficulties Prevent Further Action   | 20%            | 19%            | 15%            |
| Further action resulting from the crime report will be undertaken by another body or agency subject to the victim (or person acting on their behalf) being made aware of the act to be taken | 11%            | 11%            | 14%            |
| Charged/Summoned/Postal Requisition and Charged/Summons - alternate offence (Offender has been charged under the alternate offence rule)   | 11%            | 11%            | 10%            |
| Investigation Complete; No Suspect Identified. Crime Investigated As Far As Reasonably Possible-Case Closed Pending Further Investigative Opportunities Becoming Available                   | 9%             | 9%             | 10%            |
| Evidential Difficulties Victim Based- Suspect Not Identified: Crime Confirmed But The Victim Either Declines Or Unable To Support Further Police Investigation To Identify The Offender      | 5%             | 5%             | 4%             |
| Community resolution (Crime)   | 4%             | 4%             | 6%             |
| Prosecution Prevented-Named Suspect Identified But Is Too Ill (Physical Or Mental Health) To Prosecute, or confirmed died either before crime reported or before enough evidence to charge   | 2%             | 2%             | 2%             |
| Caution Adult and Caution Adult - alternate offence (Offender has been given a simple caution under the alternate offences rule and Adult Caution - conditional                              | 2%             | 2%             | 2%             |
| Prosecution Time Limit Expired: Suspect Identified But Prosecution Time Limit Has Expired  | 1%             | 1%             | 1%             |
| Diversionary, educational or intervention activity, resulting from the crime report, has been undertaken and it is not in the public interest to take any further action.                    | 1%             | 1%             | 0%             |
| Prosecution Prevented-Named Suspect Identified But Is Below The Age Of Criminal Responsibility   | 1%             | 1%             | 1%             |

# Serious Violence in Suffolk

---

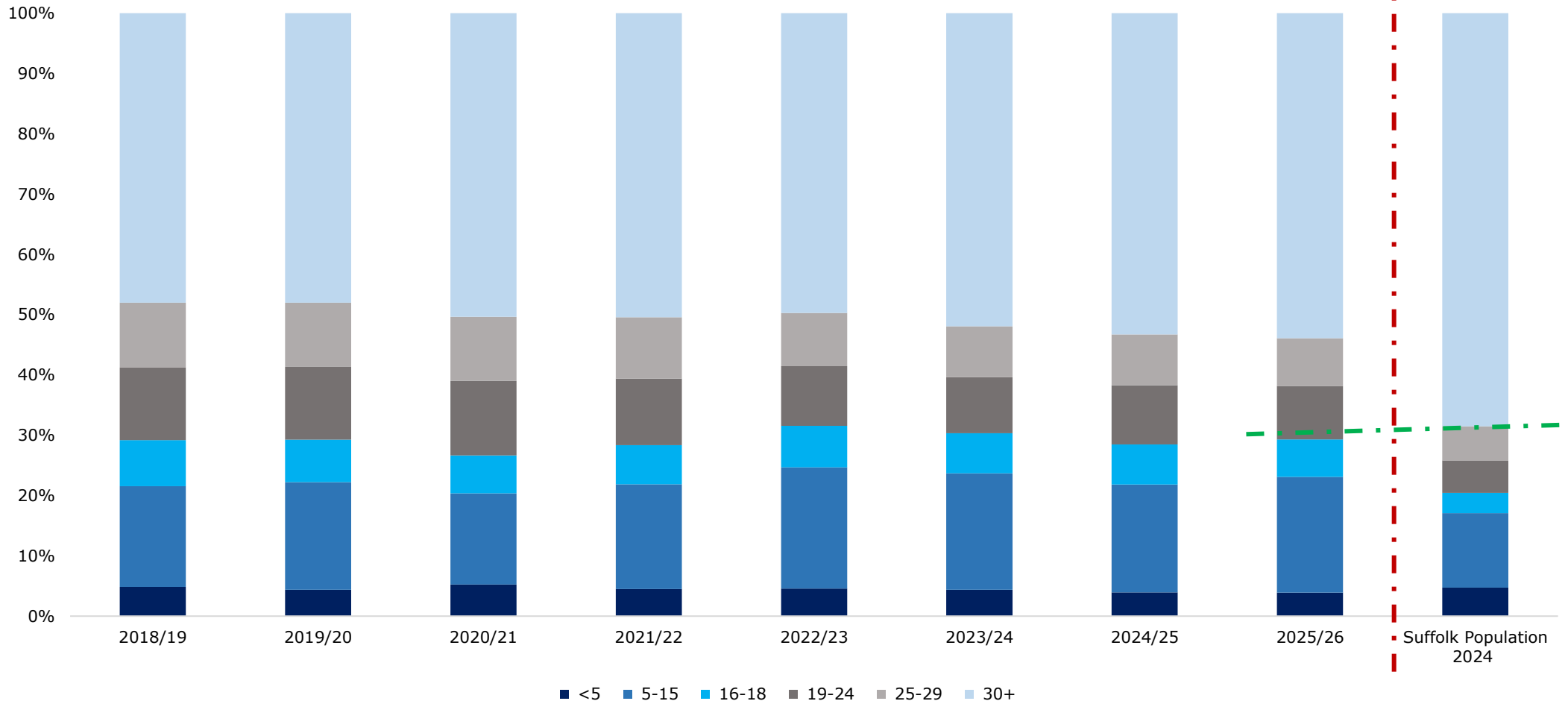
Who?

# Overall, persons involved in SV Crimes tend to be younger than the overall Suffolk population.

- All groups of under 30s are over-represented in the Police data, for example, in 2025/26, 46% were under the age of 30, while this group only makes up 31% of Suffolk's population. Proportionally, over the past 8 years, those under 30 have made up between 46% and 52% in the Police data, though it is lower now than it has been since 2018/19.

## Proportions of people involved in Serious Violence Offences, by age group, Suffolk, April to September for each financial year (2018/19-2025/26)

With comparison to Suffolk Total Population 2024 proportions by age groups



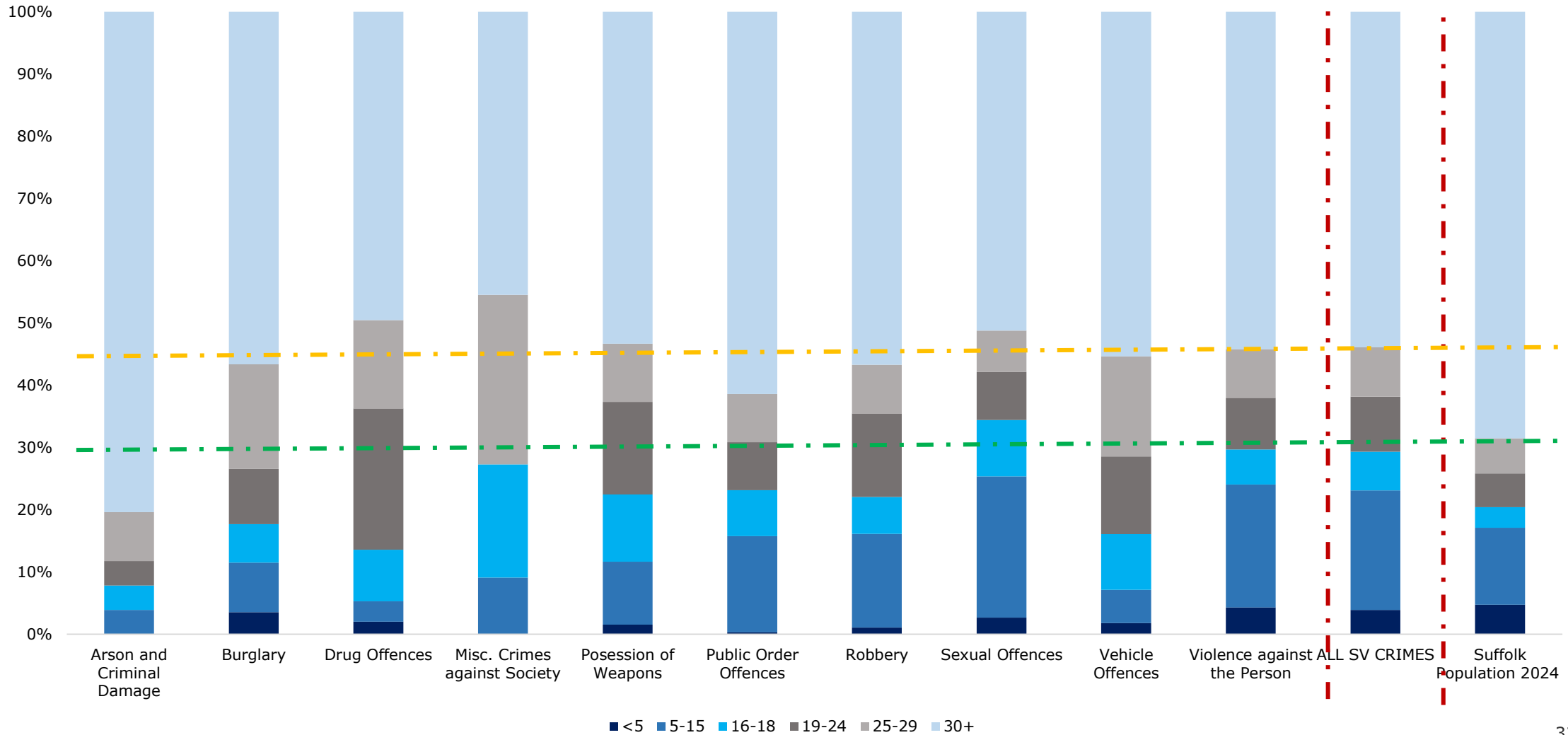
How to read this chart:  
The first eight bars from left to right show the age breakdown of those involved in SV offences by year. The final bar shows the age breakdown of Suffolk's total population in 2024. The green line indicates the current % of under 30s in the Suffolk population.

This means that the under 30s are over-represented for all SV categories (except Arson & Criminal Damage). Misc. crimes against society, drug, sexual and possession of weapon offences are the categories with the highest proportion of under 30s.

### Proportions of individuals involved in SV by crime type and by age groups, Suffolk, April to September 2025

With comparison to Suffolk Total Population 2024 proportions by age groups

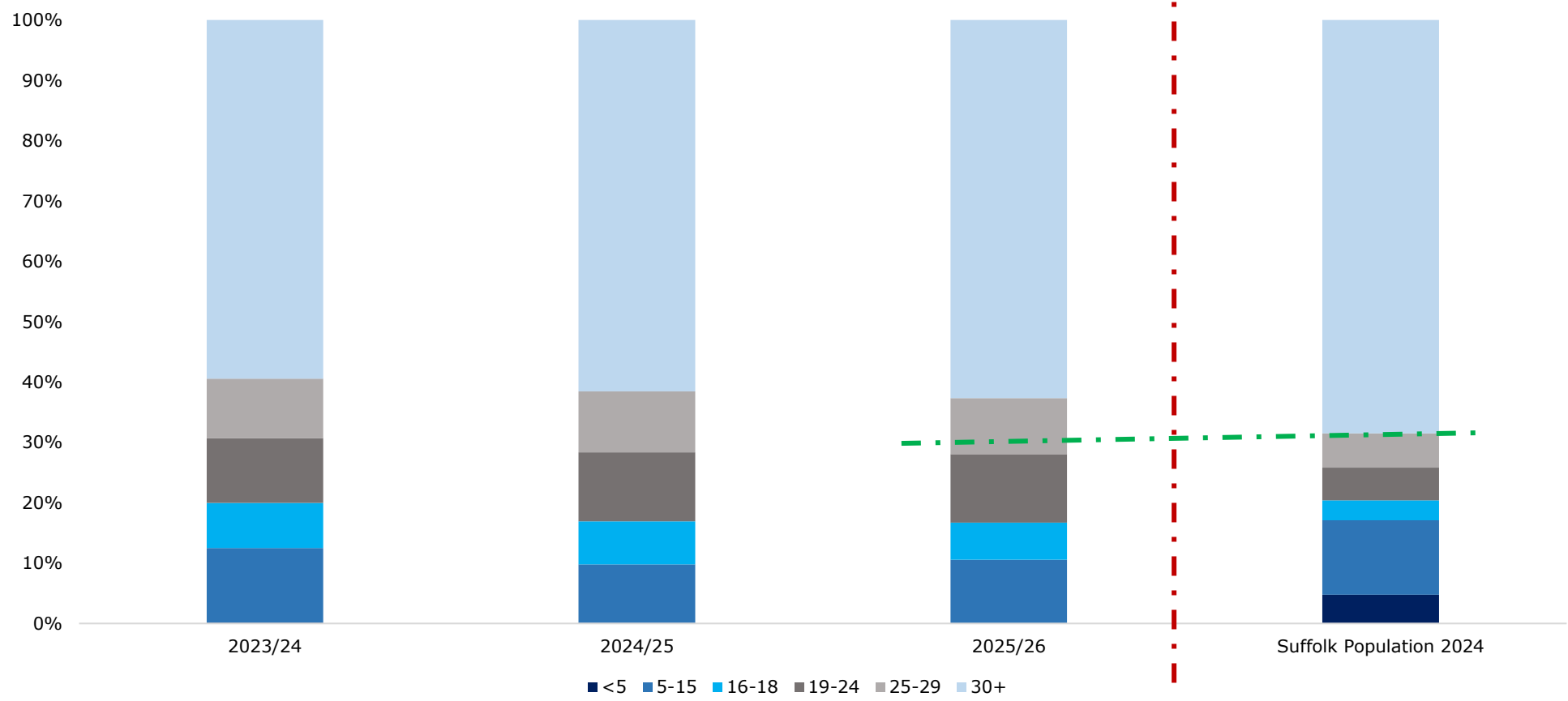
How to read this chart:  
 The first 10 bars from left to right show the age breakdown of those involved in SV offences by crime type. The 11<sup>th</sup> bar is the age breakdown for all SV crimes and the bar on the right shows age breakdown of Suffolk's total population in 2024.  
**The green line indicates the % of under 30s in the Suffolk population.**  
**The orange line indicates the % of under 30s for SV Crimes.**



7% to 8% of SV crime suspects tend to be between 16 and 18 years old, though this group only makes up 3.3% of Suffolk's population. Around 11% of suspects are between 19 and 24 (compared to 5.4% population) and 10% of suspects are 25-29 (5.7% in population).

**Number & proportion of SUSPECTS involved in Serious Violence Offences, by age group, Suffolk, April to September for each financial year (2023/24-2025-26)**

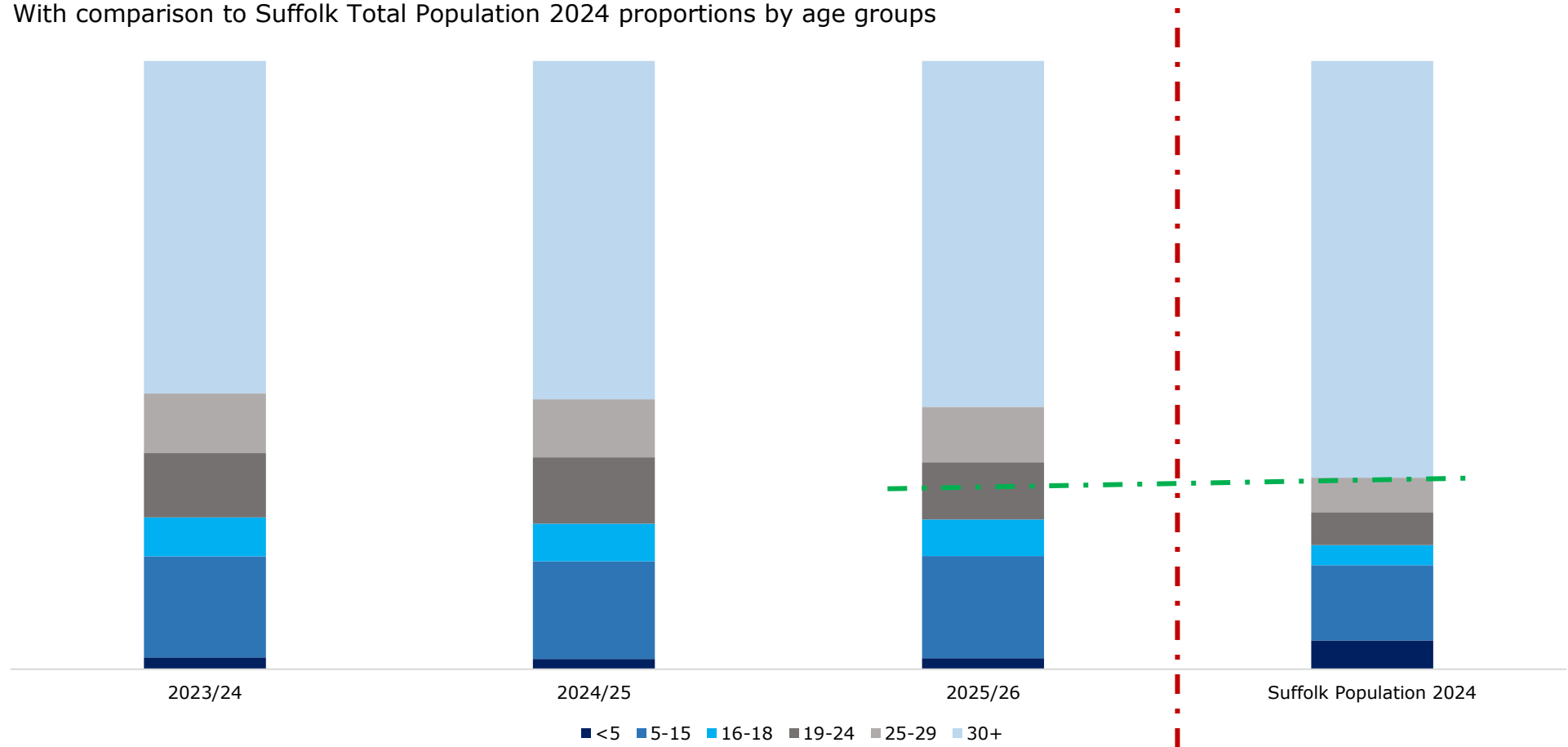
With comparison to Suffolk Total Population 2024 proportions by age groups



The picture is almost identical for victims of SV, with around 6% of SV crime victims being between 16 and 18 years old (3.3% of Suffolk’s population), around 11% being between 19 and 24 (compared to 5.4% population) and, 10% being 25-29 (5.7% in population).

**Number & proportion of VICTIMS involved in Serious Violence Offences, by age group, Suffolk, April to September for each financial year (2023/24-2025-26)**

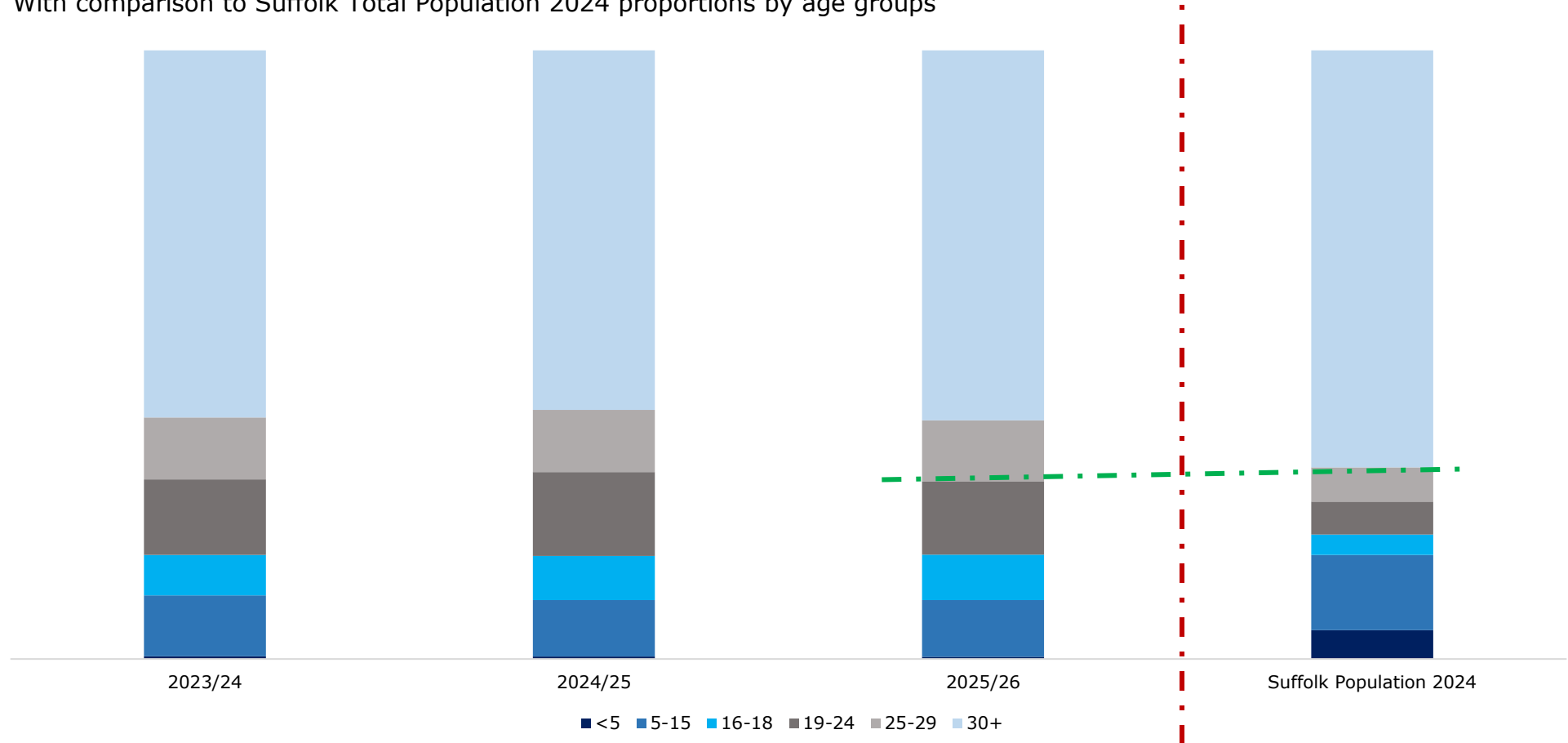
With comparison to Suffolk Total Population 2024 proportions by age groups



The same proportions apply for those that are witnesses of SV crimes, though the proportion of 19-24s is slightly higher (between 12% and 14%).

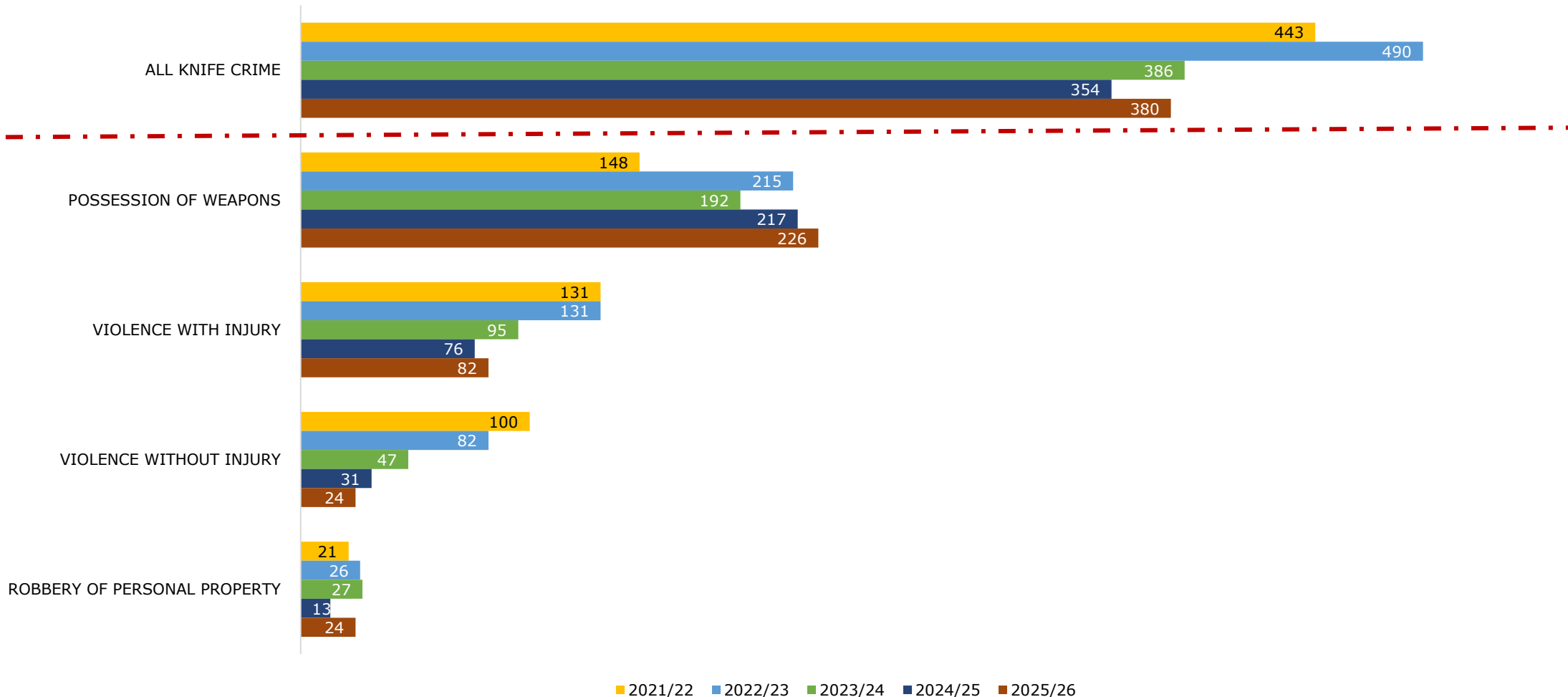
**Number & proportion of WITNESSES involved in Serious Violence Offences, by age group, Suffolk, April to September for each financial year (2023/24-2025-26)**

With comparison to Suffolk Total Population 2024 proportions by age groups



The number of Knife Crimes between April and September 2025 have increased year-on-year, with possession of weapon offences now at their highest in 5 years.

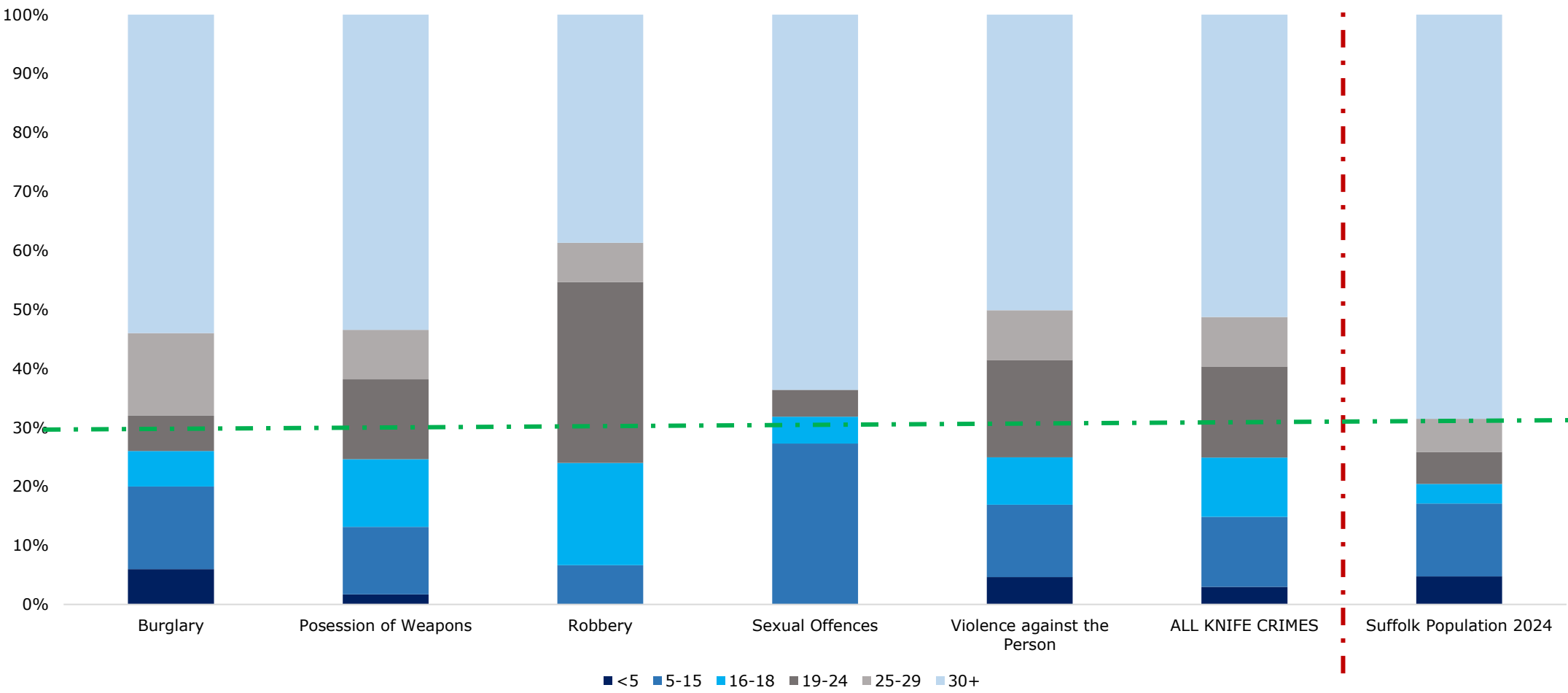
**Knife Crime - total and numbers by offence sub-groups (top 4), April - September for each financial year (2021/22 - 2025/26)**



Compared to all SV Crimes, the number of under-30s are proportionally higher for SV Knife Crime and hence are disproportionately even higher compared to the Suffolk total population.

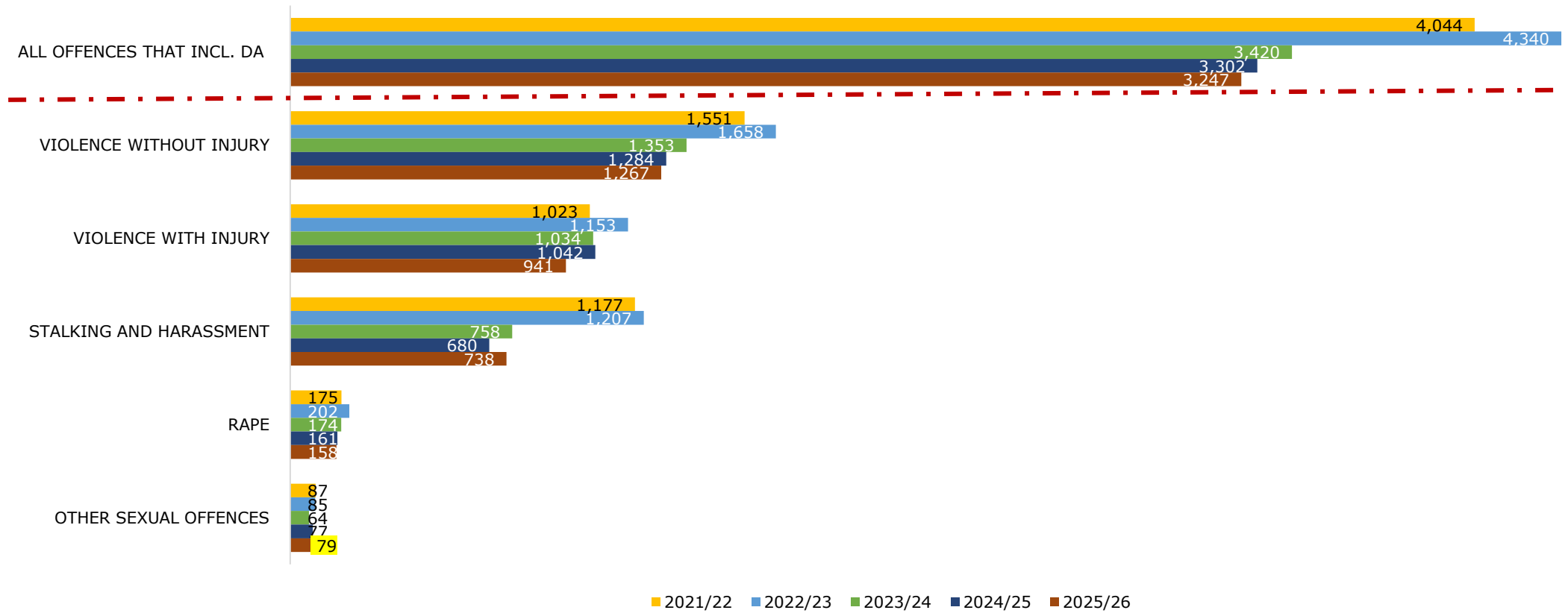
**Proportions of individuals involved in Knife Crime by crime type and by age groups, Suffolk, April to September 2025**

With comparison to Suffolk Total Population 2024 proportions by age groups



The number of Serious Violence Offences that include Domestic Abuse are lower compared to the same period last year (3,247 vs. 3,302).

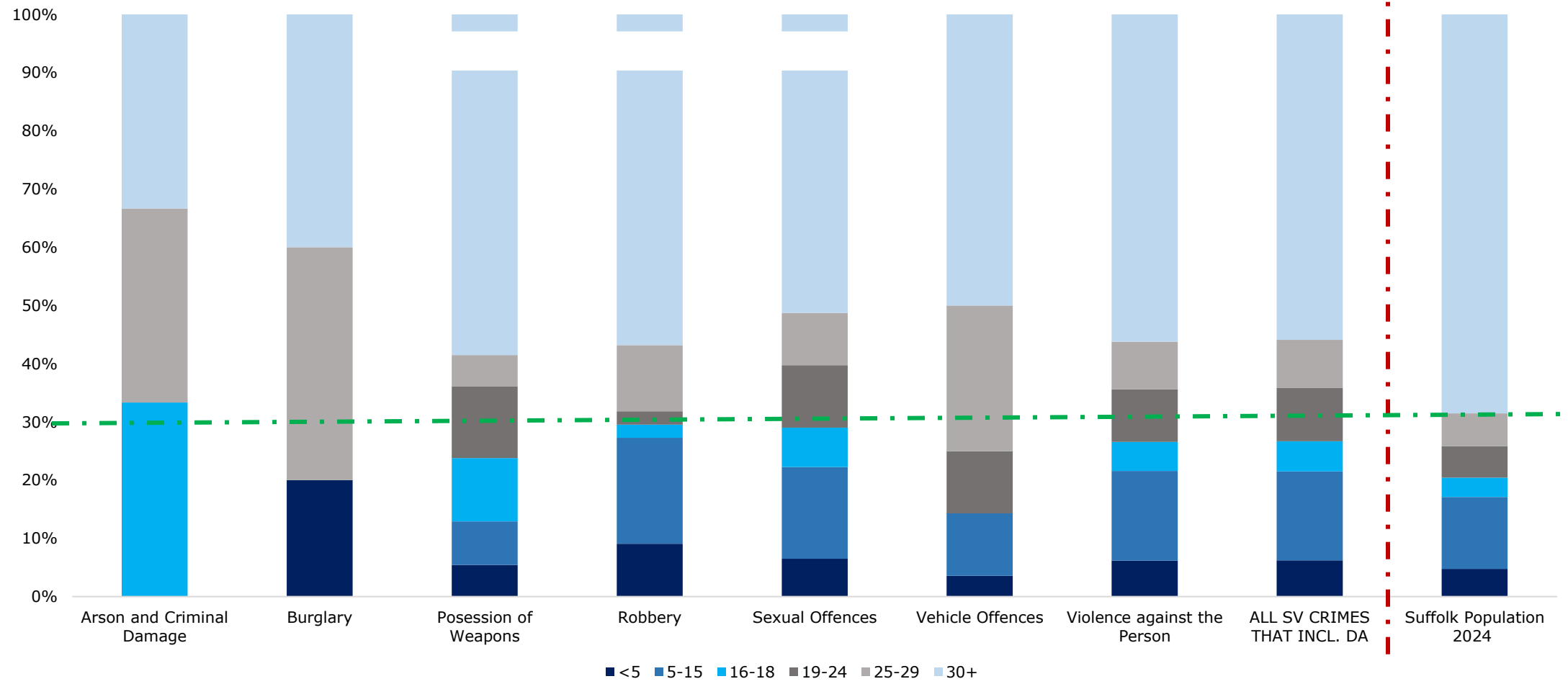
**Domestic Abuse - total and numbers by offence sub-groups (top 5), April - September for each financial year (2021/22 - 2025/26)**



Under-30s are also over-represented for SV crimes that include Domestic Abuse (44%).

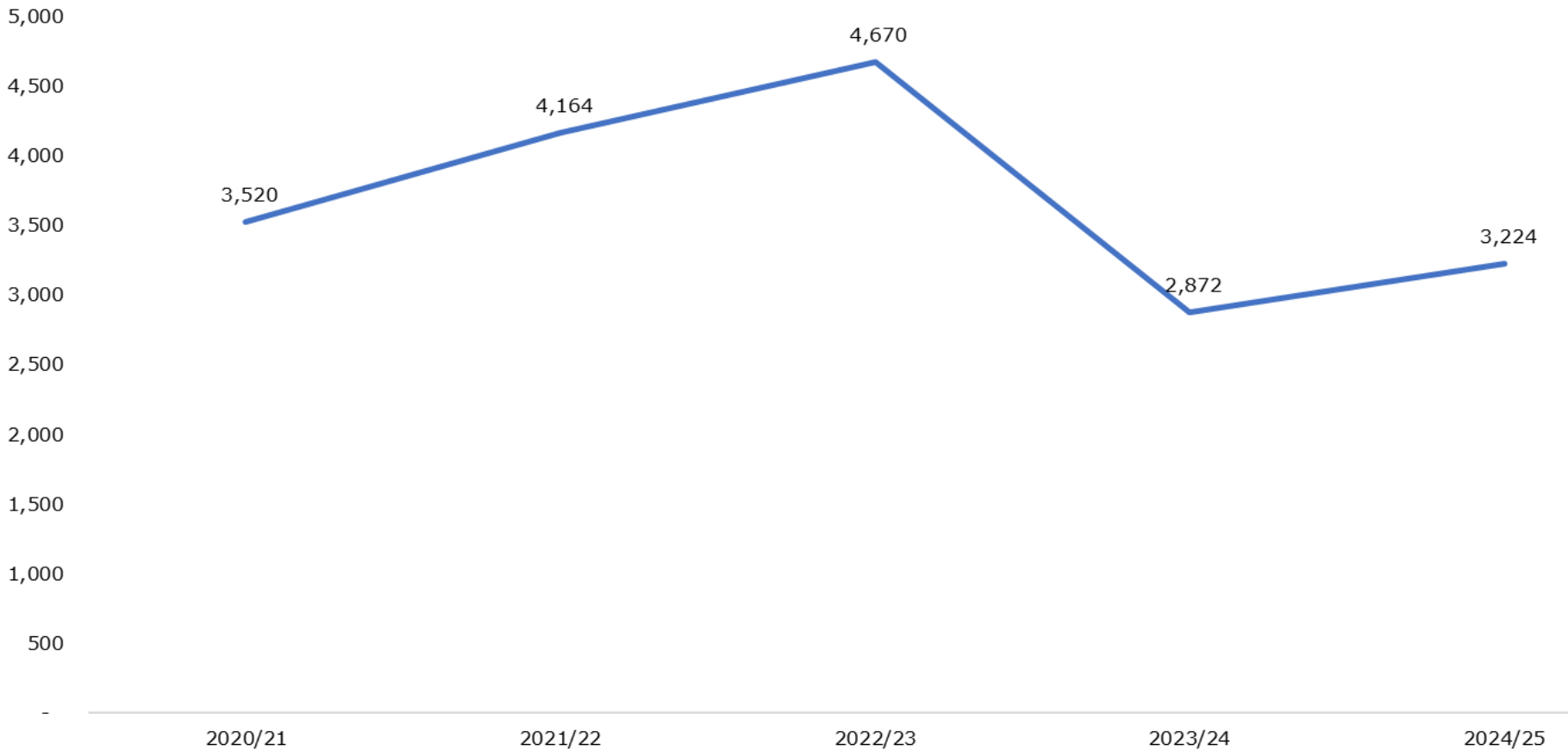
**Proportions of individuals involved in SV that also incl. Domestic Abuse by crime type and by age groups, Suffolk, April to September 2025**

With comparison to Suffolk Total Population 2024 proportions by age groups



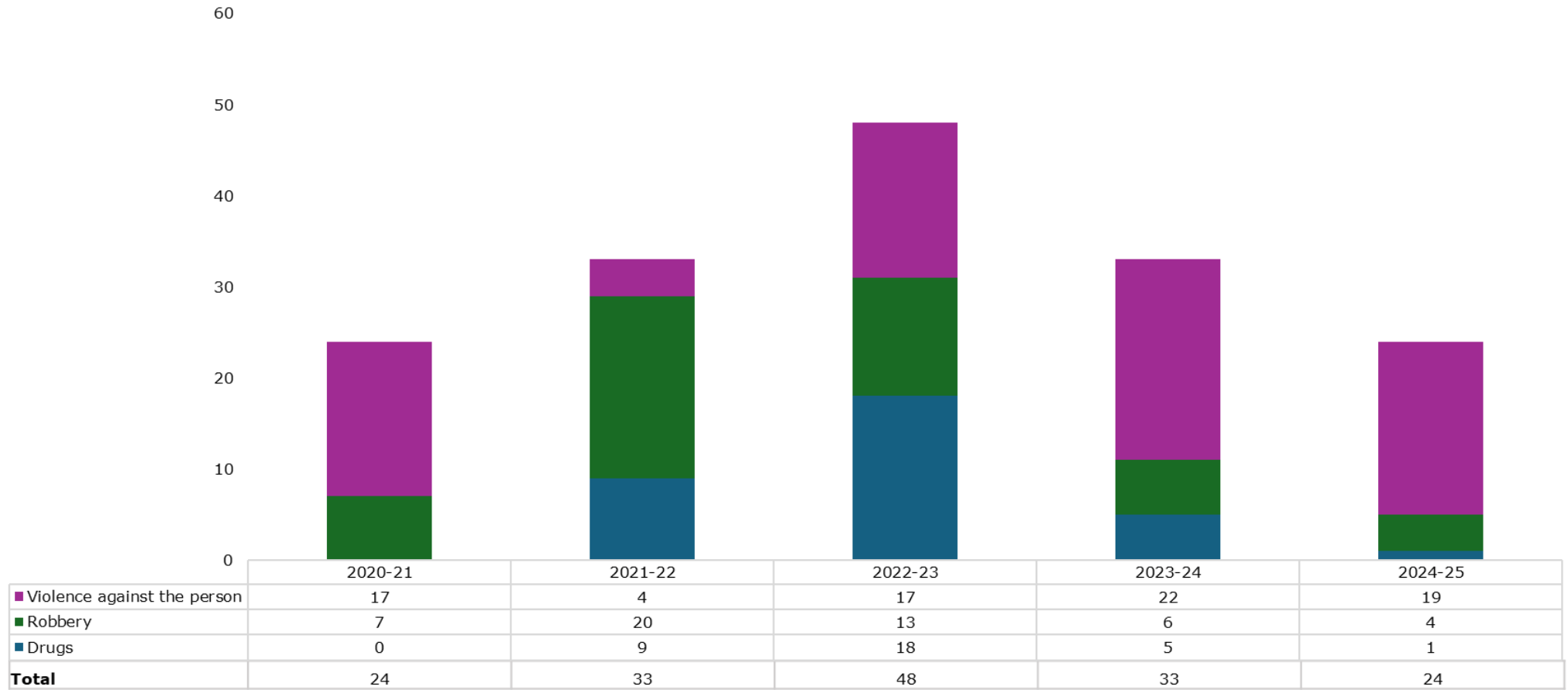
As mentioned above, the Suffolk SVD Partnership agreed on what constitutes SV in Suffolk at the outset of its Strategy development.  
Based on this definition, Suffolk Police recorded 3,224 SV offences that include at least 1 suspect under the age of 19 in 2024/25.  
*Note the below is for each full (April-March) financial year.*

**Number of SV offences that include 1 or more suspects under the age of 18, Suffolk, by FY**  
(Source: Suffolk Police)



The Youth Justice Board (YJB) has a different definition of Serious Youth Violence (SYV) which includes **only Drugs, Robbery or Violence Against the Person offences with a seriousness score between 5 and 8**. Violence against the person offences tend to make up most of SYV recorded by Suffolk Youth Justice.  
*Note the below is for each full (April-March) financial year.*

**Number of Serious Youth Violence offences within Suffolk Youth Justice, Suffolk, FY**  
 (Source: Suffolk Youth Justice)



*Note: Robberies are always classed as seriousness score of 6*

