

# Criminal Exploitation Programme Evaluation

## Appendix Data / Information Pack

(focus on 1<sup>st</sup> April –  
30<sup>th</sup> September 2022  
Activity and SODA  
survey results)

February 2022



- SODA conducted a survey to understand impact of some of the key CE Programme elements.
- Though this survey was shared within all relevant organisations and teams, we only received 39 responses.
- Unfortunately, evaluations like this do need engaged colleagues, as without their feedback only limited understanding and inferences can be gained.
- The majority of the respondents are front-line practitioners, social workers, constables.
- Findings from the survey are included in the relevant sections of the following deck.

Organisation	Number of respondents
Suffolk Youth Justice	12
Suffolk Constabulary	9
Children & Young People Services	4
East Suffolk & West Suffolk Councils	3
Suffolk County Council	2
CFYPS Ipswich Youth Team (Mental health team)	1
ICS	1
Safer Activities for Everyone CIC	1
School	1
Suffolk Fire & Rescue Service	1
Suffolk Safeguarding Partnership	1
Suffolk Trading Standards	1
West Suffolk Hospital Foundation Trust	1

## SAFEGUARDING ADOLESCENTS

**LEAD:** Head of safeguarding, SCC

**OBJECTIVE:**

An approach to safeguarding that responds to vulnerable people's experience of harm outside of their home, including peers, schools and communities.

Contextual Safeguarding Implementation Group

**MACE**  
(East + West + Ipswich)

**Suffolk Safeguarding**  
**Partnership Sub Group**



Activity	Measure	Q1 & Q2 2022/23 Activity Update
<p>Continue to develop the SPOC opportunity within Customer First to ensure information that does not meet threshold is captured. Awareness of contextual risks to colleagues in CF.</p> <p>The information gathered is fed into hotspot mapping and shared with MAC and other partners.</p>	<p>Contextual risks to children will be recognised and shared timely. Information will be free flowing to the CE co-ordinator and used to make links between people and places and supports MAC in identifying where resources should be focused</p>	<ul style="list-style-type: none"> <li>Seven new SPOCs identified in Care First – trained by CE co-Ordinator.</li> <li>CE awareness training included in CF induction.</li> <li>Information shared continues to be fed into hotspot mapping.</li> </ul>
<p>Exploitation and Online Safety Group (EOS) Recommendations from 'It was Hard to Escape' and other relevant SCR's to be built into the EOS action plan</p> <p>It Was Hard to Escape ( March 2020)</p> <p>The Child Safeguarding Practice Review Panel has published a national review, which aims to identify what might be done differently to protect children who find themselves threatened with violence by criminal gangs</p> <p><a href="https://assets.publishing.service.gov.uk/government/uploads/system/uploads/attachment_data/file/870035/Safeguarding_children_at_risk_from_criminal_exploitation_review.pdf">https://assets.publishing.service.gov.uk/government/uploads/system/uploads/attachment_data/file/870035/Safeguarding_children_at_risk_from_criminal_exploitation_review.pdf</a></p>		<ul style="list-style-type: none"> <li>A new paper outlining the recommendations from recent national documents is being presented at EOS July 2022. Anything identified that Suffolk can usefully use will be taken forward.</li> <li>EOS meeting 27/09/22 CP attended, updated re: CE Work Programme and feedback on Social Media mapping work with SLO Team, Workforce Development / SSP, RSHE Schools Education Coordinator after training need identified by SES Team agreement to merge the activity and EOS become Online Safety and Exploitation Group.</li> </ul>
<p>Identify champions in the safeguarding network. Update Jan 22 * The 5 safeguarding champions to attend regional and national events.</p> <ul style="list-style-type: none"> <li>Embed the champions within the events and opportunities available from Uni of Beds</li> <li>Develop our own Suffolk CS network</li> </ul>	<p>Practitioners within Suffolk will be utilising resources available to improve and develop practice for children who require safeguarding from contextual harm</p>	<ul style="list-style-type: none"> <li>Regional events, which are led by the University of Bedfordshire (UoB), are up and running again.</li> <li>Suffolk CS Champions attended and brought back learning to Suffolk. For example, members of CYP will join YJ later in the year for training around peer assessments and other tools available from the UoB.</li> <li>The last meeting of the CS implementation group was held. Going forward it will merge with the CE hubs steering group and reps from Transitional Safeguarding. The CE and CS steering group is now joined up, including reps from Transitional Safeguarding. One meeting has been held, positively ACS are also in attendance and can access the tools.</li> </ul>
<p>The contextual safeguarding module to be embedded within Liquidlogic, CYP's case management system</p>	<p>Referral pathways will be available to enable contextual information to be submitted and entered into the case management system. A visual link of people and places will be available for practitioners who are safeguarding children</p>	<ul style="list-style-type: none"> <li>The task and finish group has access to the system and is working on how the module can best be used.</li> <li>The group are currently looking at what the module can do and aligning it what is required by Children's Services. NRM Flowchart for First Responders updated with MAC email address and Liquid Logic reminder for SCC staff.</li> <li>Permission has been given to allow partners access to the system.</li> </ul>

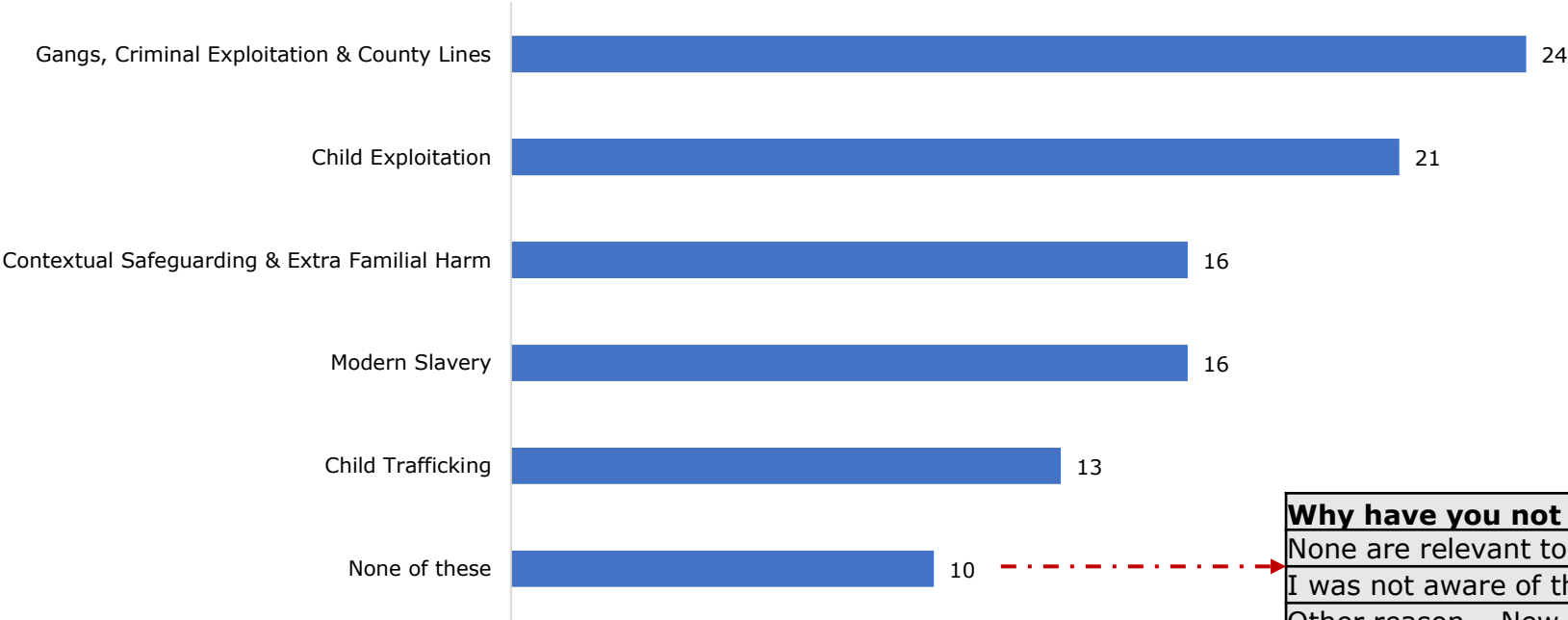
Activity	Measure	Q1 & Q2 2022/23 Activity Update
Expansion of MAC to widen their remit and focus upon children who exhibit indicators of vulnerability to exploitation. Quarterly newsletter distributed amongst partners	The team will be working with children who currently wouldn't meet the threshold to support and divert away from risk of exploitation. Awareness/assurance of the function and work of MAC	<ul style="list-style-type: none"> <li>This remains a challenge; another paper is to be presented to LT to try and achieve additional resource.</li> </ul>
Intel used to full effect, better and more consistent join up Jan 2022 update Twice weekly intel meeting with police – this is in place CE co-ordinator and MAC mapping to be offered Partnership Mapping events across the county – attendance from key statutory agencies and including housing and third sector – in place DCS to raise at a national level for improved information sharing between LA's and host constabulary when children are placed away from their own county Attendance to ASBO meetings	Suffolk will know its landscape including indigenous children who cross borders and children who enter Suffolk from other areas in the country. Information sharing will be fluid, timely and within a legal framework	<ul style="list-style-type: none"> <li>The intel meetings continue to take place twice weekly.</li> <li>Golden Hour is now up and running (i.e. system involvement within first few hours of YP remanded in custody.)</li> <li>Partnership mappings take place across the county as and when required.</li> <li>ASBO meetings are BAU when the calendar allows.</li> </ul>
Assessment tools to be reviewed, developed and implemented CE and CSE toolkits to be reviewed and combined to capture contextual safeguarding risks in one place Risk assessment for contextual safeguarding to be adopted and embedded within CYP. Contextual safeguarding conferences will be implemented for children who are at risk of sig harm from extra-familial harm.	All area of risk/harm will be captured in one place. All children who are exploited or at risk of exploitation will have a RA completed that is reviewed regularly. CYP will have an up-to-date analysis of risk and respond timely and with appropriate resource	<ul style="list-style-type: none"> <li>A SharePoint site, on the Suffolk Safeguarding Partnership website And accessible to partners only, has been developed to store the resources from the UoB and also research docs and other reviews.</li> <li>SW's will join YJS for training how to use the UoB tools to assess and understand the risks to YP.</li> </ul>
Monthly MACE and pre-MACE meetings are held in each of the three areas across the county, Lowestoft, Ipswich and Bury St Edmunds. The VAT will be updated with any new information shared.	The activity leading to young people's involvement within exploitation will be identified and disrupted using tools available from partners	<ul style="list-style-type: none"> <li>Pre-MACE is in place.</li> <li>MACE now also looking at perpetrators of exploitation (referral form in place).</li> </ul>

As part of the 2021/22 deliverables, the workstream reviewed and updated guidance documents for a number of topics relating to CE on the Suffolk Safeguarding Partnership [portal](#).

29 out of 39 respondents had accessed at least one of these topics. Those that had not, said they were unaware of these resources and hence a wider communication / PR effort might help to make these resources more widely known.

The most accessed topic was around Gangs, CE and CL (24 out of 39).

**Have you accessed any of the following information, guides, advice, videos, etc. relating to criminal exploitation topics?**  
(Tick all that apply; count 'Yes')



Why have you not used any of these resources?	
None are relevant to my role / work	2
I was not aware of these resources	7
Other reason – New to role	1

# Please tell us how you have used these resources?

Shared the resources and highlighted them to partners
I use these in my practice to ensure that I am able to observe and recognise the key indicators of exploitation or harm, and to identify a clear methodology to obtain wider support in these specific areas.
I have been able to refer to the NRM. I have been able to use the CL video to show a young person. I have been able to refer to the MACE.
Increased awareness. With a Roma Romanian family, I considered Modern Slavery due to their circumstances.
They have been helpful in having an oversight of each of the topics for working in a strategic role which the SSP has.
The main difference for me was as a refresher, as the way in which vulnerable people can be targeted and exploited now is often through subtle ways through technology, etc, which is changing all the time and new ways criminals are finding changes rapidly so having access to regular up to date information is really essential to my role. It is also useful and interesting to learn more about court cases and legislative changes affecting the areas of safeguarding we may work with in our team, and for myself in the wider social work arena, for my professional knowledge and awareness raising on the topic, also to pass on such knowledge and changes to my team and colleagues if relevant. I think this can make me a better worker for the safety of the public we support.
For strategic planning and commissioning purposes
Used for preparing inputs, briefing staff, informing colleagues and raising awareness internally.....Access to current information is crucial in the accuracy of these.
Allowing me to understand more the safeguarding concerns for young people beyond their home environment and the external factors that influence this
Heightened awareness and indicators to look out for. I have had young people on Child Protection plans relating to contextual safeguarding and the resources help with the understanding.
Refer to when working with a child, supporting my team, discussions in team meetings - reflective practice, developing practice in my team, supporting other practitioners - workshops to other teams. Embedding my knowledge in with with children, families and communities
Support with understanding contextual safeguarding has been helpful with my work in understanding the broader context of risk and potential obstacles to managing risks.
Sign posted to friends/family/colleagues/Foster Carers and young people
Without doubt, increased my knowledge around the subject meaning I am able to direct my team in more specific ways and helps me to understand the bigger picture.
Learning information on these subjects has assisted in identifying the signs of those subjects and establishing the relevant safeguarding.
Resources available have assisted in the correct recording of modern slavery investigation
Provides a much better understanding of the reality of CE, particularly in relation to how to have effective safety planning conversations with children and families. This is to ensure that we are effectively keeping children safe.
Applies in my daily work and I ensure the resources are available for those with less knowledge
Incorporate Information into training I deliver and increase my knowledge which gives me the confidence to recommend pathways to colleagues or contacts for me to discuss moving things forward if I am unsure this means we do consider everything we possibly can
Helped to shape bid and delivery model for Criminal Exploitation Hubs as well as youth justice delivery
Used them to gain a better understanding of the topic. Now I have reviewed the topics available, I am keen to have a closer look and see how they can aid my work.
We have used the resources to support our staff to understand the impact of behaviours with children with severe learning difficulties and adapted our curriculum and approaches to targeted behaviour interventions.
Safety mapping with young people and taking this into account when making appointments.
Source: SODA survey 'Understanding Impact of CE Programme', September 2022.



The Safeguarding Adolescents workstream was also responsible in the set-up of the Multi Agency Criminal Exploitation (MACE) panels. All 39 respondents are aware of the MACE, with 22 of them having had direct engagement since its launch. Experience of the MACE includes:

I have submitted referrals to MACE as a result of YP's being concerned or at risk of exploitation and requiring more complex steps to be taken to support these concerns.
I have referred YP to the MACE on two occasions. The first time the YP was not adopted due to there being no police intel of him being involved with IP3 at that given time although he wanted to be. My second experience is ongoing as I have recently referred a YP in. The co-ordinator Roxy was quick to make contact with me and other professionals working with him which was useful.
I have sat in on one of the MACE's to ensure I'm familiar with the process and procedure. This information also sits on our website.
Have provided research and provided to the panel in relation to some individuals when MACE first was up and running. We discuss those referred in and ongoing development either daily or at our monthly tasking process as required. I support staff on my team who engage with MACE more regularly as part of their role.
I have made various referrals to MACE.
I had to provide information to my manager about a young person whom I was working with who was being discussed at MACE. I was informed of the outcome - she was not adopted.
Attend all 3 MACE panels - they help to direct the work of the CE hubs. Some of the MACE meetings are stringer than others
I regularly attend to represent and contribute regarding any interaction with the hospital
My manager attends and feedback to team
I sit on both the Pre MACE and the main MACE panel. I find them useful for information sharing and intelligence building. I am able to advise partner agencies what disruption, enforcement and engagement the team I work on have been doing. This then helps partners understand what actions police are taking to counter the exploitation risks. My frustrations come from some partners just using the forum for giving information they know about an individual but not actively conducting disruption tactics and then reporting back.
MACE is pivotal to discuss and refer children that have been exposed to or at risk of exploitation and plays a critical part in the process of safeguarding.
MACE have referred children of concern through to police in a clear and concise format, allowing police to process this information efficiently and action accordingly.
I have made several referrals to MACE. It would be beneficial to have a copy of the actions if a child is heard at MACE.
I am not always sure of how this is used to actively change young people's circumstances. It is a better process now that practitioners are invited to join the MACE panel to discuss their YP.
Have attended the North MACE regularly since implemented. really well organised and case discussions are kept focussed and time managed. Contributions requested of all attendees. Have developed understanding of local risk / hot spot locations which feeds into our wider CSP work.
I have information sharing sent to us on a regular basis which I can share with our wider workforce if its appropriate
I have only attended 2 panels so far and this has been to shadow. Always found them well organised, informative and an essential multi-agency approach.
Lots of work has gone into developing MACE. I feel that perhaps CYP and Police are coming at it from different angles, sometimes this works well and sometimes it does not. I feel that perhaps the young people being discussed could have benefitted from being brought to MACE earlier. I do not believe we should be waiting until there is an identified perpetrator to disrupt before we are working with the YP as often we can never actually pinpoint the perpetrator but we know they are being exploited.
I have completed referrals for young people and updates for MACE meetings. These are attended by a manager, however, feedback and actions are then given to practitioners



The set-up of the Vulnerable Assessment Tracker (VAT) was also managed by the Safeguarding Adolescents workstream. 24 of the respondents are aware of the VAT with 7 having also engaged with it; while 15 said they had not heard of the VAT.

Feedback on experience of the VAT included:

Engaged via MACE - make monthly contributions to information being shared
Engagement through MACE panel
I am aware of the Vulnerability Assessment Tool and that each young person is given a score which in turn is risk rated. This score and rating is then used within their MACE profile to assist with the overall exploitation picture.
Aware of it being applied in MACE
Young people already involved in CCE are more likely to meet the threshold to be discussed and therefore we may be missing opportunities to prevent other young people from becoming victims.

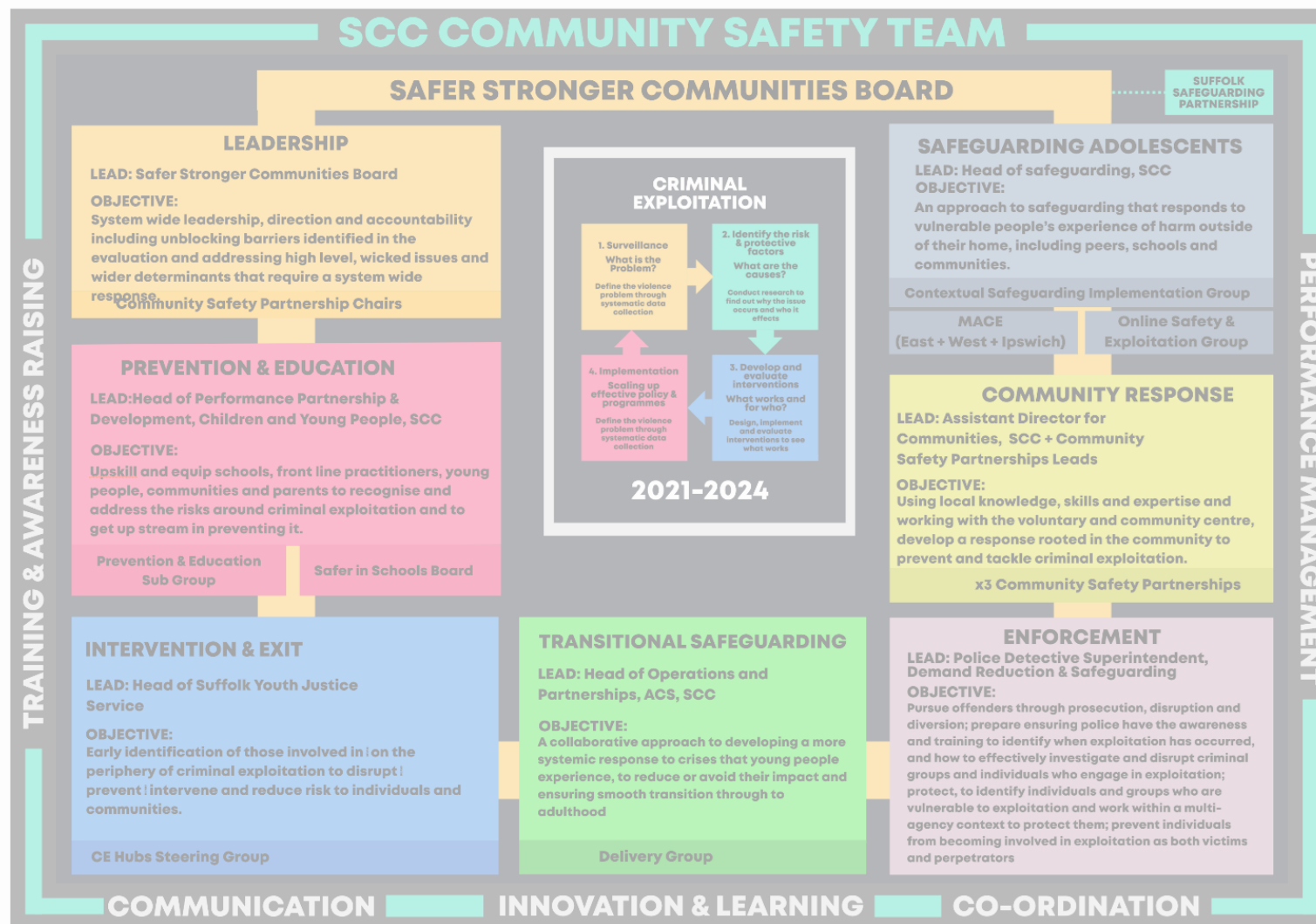
## COMMUNITY RESPONSE

**LEAD:** Assistant Director for  
Communities, SCC + Community  
Safety Partnerships Leads

### OBJECTIVE:

Using local knowledge, skills and  
expertise and working with the voluntary  
and community centre, develop a  
response rooted in the community to  
prevent and tackle criminal exploitation.

**x3 Community Safety Partnerships**



Activity	Measures (in bold) and Actions / outcomes	Q1 & Q2 2022/23 Activity Update
Criminal Exploitation scenarios at Crucial Crew	Criminal Exploitation scenarios delivered at Crucial Crews.	<ul style="list-style-type: none"> <li>Ipswich Crucial Crew delivered between the 6th and 17th June 2022; included a scenario on CE. The event attracted just over 1,100 pupils that attended in person. The virtual version of crucial crew developed during the pandemic restrictions was sent to those school that were unable to attend in person.</li> <li>Ipswich Borough Council + Police reviewing crucial crew scenario for 2023 together to ensure it remains relevant.</li> <li>BMSDC now planning for Crucial Crew 2023 events. Bridge Project taking over the management of the Crucial Crew event in Babergh, the week is scheduled for 15th-19th May 2023 in Sudbury. Exploitation messages to be considered as part of the event.</li> <li>West Suffolk – completed: exploitation covered in number of scenarios, such as Healthy Relationships, Internet safety and criminal exploitation. Workbook and footage available for schools with signposting information included.</li> <li>East Suffolk Council - face to face crucial crew on 17<sup>th</sup> October for schools had to be cancelled due to illness but the CCE videos has been sent to these schools <a href="http://www.suffolkrucialcrew.uk/teaching-resources/ipswich-crucial-crew/">http://www.suffolkrucialcrew.uk/teaching-resources/ipswich-crucial-crew/</a></li> </ul>
Explore opportunities for youth work provision		<ul style="list-style-type: none"> <li>MACE panel partner workshops delivered to focus on disruption, prevention &amp; resources available to Borough &amp; Districts – including allocated CE CSP funds.</li> <li>BMSDC: continues to identify opportunities to work with young people. Although we are awaiting the final attendance numbers for the Holiday Activities and Food Programme 39 venues were used across Babergh and Mid Suffolk, covering all days of the summer period. Initial quality assurance visits have shown many to be well attended and feedback from children has been positive. The programme provides a wide range of free activities and food for children who are entitled to free school meals.</li> <li>West Suffolk: Continues to identify opportunities for youth work provision and funded SPARK and The Mix through CSP funding to increase youth provision, continue to work closely with CE Hubs and where appropriate work together on projects such as Skate Park opening and celebration events. Currently exploring projects with The Forge and CE Hubs and had a presentation from Sarah Langham in relation to the ASPIRE project she is taking to secondary schools in the West. Also ran Holiday and Food Programme.</li> <li>Ipswich Borough Council: the Triangle Youth Zone run by Access Community Trust has been funded for a further 6 months. Looking to into a provision in the racecourse area. Pop up cinema to be delivered in Triangle on 13 October 22 with plans to deliver in Racecourse area, joint funding with CE Hubs and CSP.</li> <li>East Suffolk Council: Holiday and Food Programme and diversionary activities for young people have been delivered in ASB 'hotspot' areas over the summer period across East Suffolk.</li> </ul>
Link countywide CE Actions to local CSP plans		<ul style="list-style-type: none"> <li>ASB officers and SNT link officers meet regularly to discuss vulnerable tenants/cuckooed addresses.</li> <li>Attendance at TCG meetings to ensure joined up with specific police operations</li> <li>Regular attendance to both the South and West MACE panels, new member to the Team also now in attendance.</li> <li>Team liaising with the CE Hubs, reviewing current provisions.</li> <li>E-learning training on Modern Slavery incorporating exploitation to be launched and promoted to staff internally on 18th October as part of Anti-Slavery Day.</li> <li>CE Training Brochure / Bystander Intervention Training for Sports Coaches, Volunteers, Leisure and Activity Providers and Youth Workers and Child Criminal Exploitation Through Sport and Physical Activities Webinar shared with colleagues and networks</li> <li>BMSDC working with Claire Prosser with regards to planning and looking to programme a council wide CE refresher training/workshop in Q3/Q4.</li> <li>Supporting system response to Look Closer Social Media campaign w/c 3rd October</li> <li>West Suffolk: Completed - actions in relation to CE included in Western Suffolk Action plan and links made.</li> <li>Ipswich Borough Council: Links to CSP plan</li> <li>East Suffolk Council: CCE has been incorporated into the CSP action</li> </ul>

Activity	Measures (in bold) and Actions / outcomes	Q1 & Q2 2022/23 Activity Update
Develop a Virtual Centre of Excellence Enable the development and growth of grass roots organisations to deliver accessible, good quality youth provision across Suffolk.  (Provide an accessible One Stop Shop of support for established or new youth groups.)  Developing a trusted adults programme	2022/24 objectives; 1. An increase in young people feeling supported to meet their aspirations and thrive 1. A reduction in the levels of youth loneliness and poor mental health 2. An increased resilience within communities to support their young people with an early intervention approach 3. An increased capacity for local solutions to lack of safe spaces and positive engaging activities for young people 4. Providing opportunities for ongoing support to trusted adults to ensure confidence, quality of practice and sustainable capacity at a community level. 5. An investment in quality training to support career pathways for youth work in the VCSE sector.	<ul style="list-style-type: none"> <li>• New SCC &amp; CCB funding live (to cover 22-24; new objectives set and agreed)</li> <li>• CAS employ additional 0.5fte resource</li> <li>• Youth Focus Suffolk Facebook group went live 05/04/22 – a closed group, providing a safe place to share and find out about events, activities, training and to make connections with other youth groups around Suffolk.</li> <li>• 2 CE workshops agreed for delivery Q1</li> <li>• 100 practitioners are now part of the Knowledge Hub</li> <li>• 61 new sign ups to Youth Focus newsletter (total 481)</li> <li>• 99 practitioners engaged in youth work related training across 8 courses / workshops</li> <li>• 43 attendees at the Suffolk Youth Focus Conference</li> <li>• 3,861 map views of Youth Focus Suffolk webpage (since map was created)</li> <li>• 543 Youth Focus Suffolk webpage visits</li> <li>• 222 followers on ypatcas Instagram page</li> <li>• 56 group members on Youth Focus at CAS Facebook page</li> <li>• 67 interactions with individuals and groups, providing 1-1 information, advice, and guidance</li> <li>• Trusted adults programme - aim was 15, programme from Push Forward should achieve 25 (from 5 district/borough localities)</li> </ul>

Youth Focus Suffolk was set up during year 1 of the wider CE Programme. The majority of respondents to SODA's survey were unaware of the programme.

Are you aware of Youth Focus Suffolk?	
No, I have never heard of Youth Focus Suffolk	23
Yes, I am aware of Youth Focus Suffolk and have also engaged with it	4
Yes, I am aware of Youth Focus Suffolk, but have not engaged with it	12

Performance Reporting - CCB Fund: Youth Focus Suffolk					
Outcome	Measure (per year)	Q4 2021/22	Q1 2022/23	Q2 2022/23	
An increase in young people feeling supported to meet their aspirations and thrive	4 x communities supported to set up new youth provisions	4	3	2	
	Provide 3 x 121 advice surgeries each week, plus ad hoc advice & support	56	91	67	
	70% young people report feeling more supported as a result of youth provision (from provider survey)	0	no data	Q3	
A reduction in the levels of youth loneliness and poor mental health	5 mental health training programmes offered	5	4	1	
	70% delegates feel better equipped to support yp with their mental health (from feedback)	100%	100%	100%	
	70% delegates report improved social connections with young people in their community	100%	100%	100%	
	70% young people report feeling less lonely (from provider survey)	0	no data	Q3	
	70% young people report improved sense of wellbeing from attending provision (from provider survey)	0	no data	Q3	
An increased resilience within communities to support their young people with an early intervention approach	Provide support for communities to recruit volunteers, at least 2 new volunteers per community group.	2	no data	no data	
	Provide 2 x Volunteer Management training sessions	1	1		
	Provide 2 x Fundraising and sustainability workshops	1	1		
	Increase of trained trusted adults within Suffolk communities (through principles of youth work training x 30pp)	12	July	5	
	60% community groups report feeling better equipped to operate youth provision (from survey)	100%	100%	100%	
An increased capacity for local solutions to lack of safe spaces and positive engaging activities for young people	Produce a best practice toolkit for setting up a youth project	May	In draft	Review	
	Provide 4 workshops for Village Halls to help them develop or maintain provision for young people.	0	0	0	
	Produce an 'Activities Kit' resource pack with ideas for positive activities that groups can do with their yp	1	1		
	Provide 1 x Detached youth work training programme	2	Q2	2	
Providing opportunities for ongoing support to trusted adults to ensure confidence, quality of practice and sustainable capacity at a community level.	A 6-weekly Youth focus newsletter promoting CPD opportunities, events and sector specific information (30% open rate)	5	1 (29%)	0	
	Quarterly Youth Work Conversation events	1	1	0	
	Develop and maintain the online resources and information through the Youth Focus webpage and K-Hub, as well as exploring other digital platforms (2500 website visits per quarter)	1283	1788	543	
	20 new members of the K-Hub	9	FB		
	Host an annual youth conference		Sept	1	
An investment in quality training to support career pathways for youth work in the VCSE sector.	To offer the full Level 2 Youth Work Award to practitioners who have achieved the Theory of Youth Work.	June		Q3	
	To promote the National Youth Agency & YF Suffolk bursaries for the Level 3 Youth Work Certificate	1			
	To offer 3 x Principles of Youth Work Training days (Introduction)	1	Q2	1	
	Support 4 x 'Get into Youth Work' events (through partnerships, universities, colleges, uniformed groups)	0	SAW	SAW	13

## ENFORCEMENT

**LEAD:** Constabulary, Superintendent South Area Command

### OBJECTIVE:

Pursue offenders through prosecution and disruption; Prepare for when serious and organised crime occurs and mitigate impact; Protect individuals, organisations and systems from the effects of serious and organised crime; and Prevent people from engaging in serious and organised crime.





Activity	Measure	Q1 & Q2 2022/23 Activity Update
<p>Prepare - Governance</p> <p>To put in place internal governance structure for Exploitation broken down into key areas' : Modern Slavery (this is dealt with under the Modern Slavery Board which would ordinarily deal with Human Trafficking of Adults for Sexual, Economic and Labour Exploitation), Criminal Exploitation (County Lines and use of Children for localised Drug dealing), Child Sexual Exploitation, Peer on Peer Exploitation, Financial Exploitation and Online Exploitation.</p>	<p>To create comprehensive Suffolk Policy around Criminal Exploitation including internal Governance structure and to identify a single Strategic Lead and Tactical Lead from CSIM and CPC</p>	<ol style="list-style-type: none"> <li>1. Research packs around each child heard in the MACE completed and uploaded into the relevant exploitation crime.</li> <li>2. MACE minutes are accessible to Inspector to facilitate information sharing – to be reviewed (should minutes be available to officers to provide complete picture of the child)</li> <li>3. The Constabulary Exploitation policy has been completed and is currently out for consultation with internal stakeholders prior to being signed off.</li> </ol>
<p>Prepare – To review National and Regional best practice in relation to Exploitation and How to tackle it</p>	<p>To ensure National /Regional participation in working groups and regular liaison with the NCLCC</p>	<ol style="list-style-type: none"> <li>4. See points 2 &amp; 3 above.</li> <li>5. There are good links with the National County Line Co-Ordination Centre, who attend the Drugs Strategic Board. The tactical lead is the DCI for proactive Policing who attends the regional Tactical Delivery Group (TDG) chaired by the NCLCC that is held bi-monthly. CE Partnership Officer linked in with the lead for Safeguarding from NCLCC.</li> </ol>
<p>Prepare –</p> <p>To ensure all Front Line Staff have adequate awareness of and training around Exploitation and how to identify the signs of Exploitation. This should be included in Vulnerability CPD.</p>	<p>Numbers of Officers receiving training</p>	<ol style="list-style-type: none"> <li>6. mapping of organisations and services that can be provided being completed by CE Partnerships Officer.</li> <li>7. Vulnerability Training has been delivered force wide. This was mandatory training for all officers. This included exploitation and MACE awareness training.</li> </ol>
<p>Prepare –</p> <p>To ensure multi-agency intelligence sharing in relation to Criminal Exploitation to ensure both Safeguarding of Victims and Pursuit of Perpetrators</p>	<p>To review forums where intelligence is shared. Review quantity and quality of intelligence</p>	<ol style="list-style-type: none"> <li>8. Community demographic dashboard, including areas of deprivation created to target community engagement opportunities and hard to reach communities at risk of exploitation.</li> <li>9. Key Individuals Network (KIN) has been refreshed for contact to relevant community groups.</li> <li>10. Diverse Communities Co-ordinator and Modern Slavery Advisors work with vulnerable communities and provide education around potential exploitation and hold a tracker of engagements.</li> <li>11. Linked in with Op Ascent (brothels), Op Aidant (Vietnamese nail bars) etc...</li> <li>12. Several forums through which to share intelligence, includes the Pre- MACE meeting where children and young people are discussed and relevant intelligence shared; the Missing TTCG and multi – agency strategy meetings/discussions; Schools have a direct portal to submit intelligence into the police; CYPS have the email address for he CIB to submit intelligence directly.</li> </ol>



Activity	Measure	Q1 & Q2 2022/23 Activity Update
Prepare – Ensure that partners are aware of police capability in relation to Criminal Exploitation and that Police are aware of Partners capability in relation to Child Exploitation	To create and update internal exploitation policy and forums and to share internal policy documents/toolkits with partners	13. Orders guidance is now being held centrally in the Joint Justice Command. This will be a product for both Norfolk and Suffolk. There is guidance held on the CPC Exploitation tile in the NHP Wepage. 14. Revised Exploitation Policy has been reviewed and re-written to incorporate Criminal Exploitation in addition to Child Sexual Abuse. This is currently subject to internal consultation. Once published this should be shared with partners to increase understanding of internal processes.
Prepare – To establish a comprehensive data set that supports deployment of resources into Exploitation	To work with SBOS to provide a dataset to ensure understanding of Exploitation from a policing context	15. Non crime diversion will be relaunched on October into YJS. This will be accompanied by a communications strategy. There has been a review of commissioned services from the PCC and all Youth services that could offer diversionary activities have been reviewed. Outcome code 22 will now be monitored for effective referrals and internal scrutiny completed on appropriateness. 16. Dataset for exploitation is collated on a three month basis, however, this is sometimes delayed dependent on the capacity of the analyst. This is currently under review to ascertain whether the dataset can be shared wider within the partnership.
Prevent – To increase the numbers of Non-Crime referrals into YJS, specifically in relation to Exploitation by streamlining the referral pathway and subject to monitoring and scrutiny of crimes involving CYP for missed opportunities for Diversion.	Increased numbers of Police Non-Crime referrals. Understanding of numbers referred into Diversion for Exploitation	17. All organisations confirmed that they have effective risk management tools within. 18. Thrive is now embedded within the SC CCR. 19. July – 2 Police referrals into Non Crime; August - 4 Police referrals into Non Crime.
Prevent – To ensure that problem premises for both Child Criminal Exploitation and Child Sexual Exploitation are targeted through Op Makesafe	Op Makesafe utilised on a regular basis throughout the 3 Policing Command Areas.	19. Harbinger has been refreshed as 'Golden Hour' and has been implemented through the CYPS Delivery Board. This will be the mechanism for monitor going forward. 20. Confirmed that Golden Hour is applied to 100% of C/YP custody cases.
Prevent – To improve process of gathering intelligence from Return Home Interview of those missing to identify Exploitation	Work with CYPS to ensure dynamic intelligence sharing opportunities are not missed. Auditing of RHI's .	21. Bespoke vulnerability training package, which will include exploitation, being designed by D/Supt Safeguarding. This will be delivered to all officers across Suffolk from Q3. 22. Currently being addressed through the Missing Continuous Improvement Board.
Prevent - Development of Source Unit opportunities in relation to RSO, CE Victims and Juvenile CHIS	To work with the Intelligence Manager around opportunities both within force and regionally	23. NCLCC show Ipswich as being the most impacted town nationally for CL. Drugs analysis will support and give further details.
Prevent – Utilise datasets to identify users of drugs lines to offer rehabilitation support through OP Pester	Record number of contacts made, monitor referrals to Turning Point and contacts through Crimestoppers	24. See 23 above.
Prevent – To utilise use of intelligence/information to identify hot spot areas for dynamic targeted patrols/engagement opportunities	Number of pulse patrols in hot spot areas	25. A number of CL disrupted working with the OP Orochi team and the SCDT.

Activity	Measure	Q1 & Q2 2022/23 Activity Update
Protect – Develop a multi-agency Problem Profile in relation to Child Exploitation and Child Sexual exploitation	To understand where to focus engagement and prevention opportunities through the partnership	26. This has been recommended for implementation by NCLCC under the OP Pester badge. This will be driven through the Drugs Board. 27. This is a substantial piece of work and has been tasked the SBOS within the police to better understand the exploitation profile. To be updated when complete.
Protect – Use of PNC/PND markers for those who are victims and suspects of exploitation to understand the intelligence picture around that individual	Number of PNC/PND markers used on individuals at risk of exploitation	28. 40 PND markers placed on those believed at risk of exploitation.
Protect – Use of Orders to protect vulnerable persons involved in and/or at risk of Exploitation	Orders to be considered and obtained in relation to Exploitation. CAWNs/STRO's Closure & partial Closure Orders, CBO's, RSHO's. Repository of orders to be set up and collated.	29. In 2022 there have been 11 CAWN's served by police so far. This is an increase in numbers from 2021. There has been 1 STRO obtained in 2022, with another being sought. There have been 12 applications for CBO's.
Protect – To review current provision for those wanting to exit exploitation and criminality and seek funding and referral pathways	To compile current service provision and scope for specialist opportunities	30. Meeting with the OPCC has been held to review the current provision for Children & Young People at risk of Exploitation and those who wish to exit criminality. Gap identified within 3rd Sector provision. Work with the OPCC and partners to gain better understanding to allow to bespoke commissioned provision.
Protect – To ensure that NRM referrals are completed when a child is identified at being of risk of exploitation A23:C25	Number of NRM referrals being completed	31. 40 NRM 's were referred and recorded in the last ¼.
Pursue – To conduct adequate Sec 45 defence investigations to ensure that where a child is being exploited that the perpetrator is identified and held to account	Number of HT/Modern Slavery offences recorded and numbers of persons charged	32. 30 Offences Human Trafficking/modern Slavery offences were recorded and there was 1 charged with a relevant offence.
Pursue – To develop a co-ordinated partnership response to the cuckoo'ing of vulnerable adults	A documented policy around cuckoo'ing and number of cuckoo'd addresses visited	33. Included as part of the Exploitation Policy in terms of how police/partners deal with Cuckoo'd addresses. Number of Section 8 visits are recorded on a monthly basis.
Pursue – To identify Drugs Lines by Threat Risk and Harm ensuring those that exploit children are properly assessed and graded	To review at a scoring system for local drugs line replicating that used for County Lines Drug lines. To monitor the numbers of drugs lines by THoR across Suffolk	34. A scoring mechanism is currently being devised in relation to local lines to accurately reflect the Threat, risk and Harm. Local lines feature within the South Area TTCG process. This is looking at being replicated forcewide.

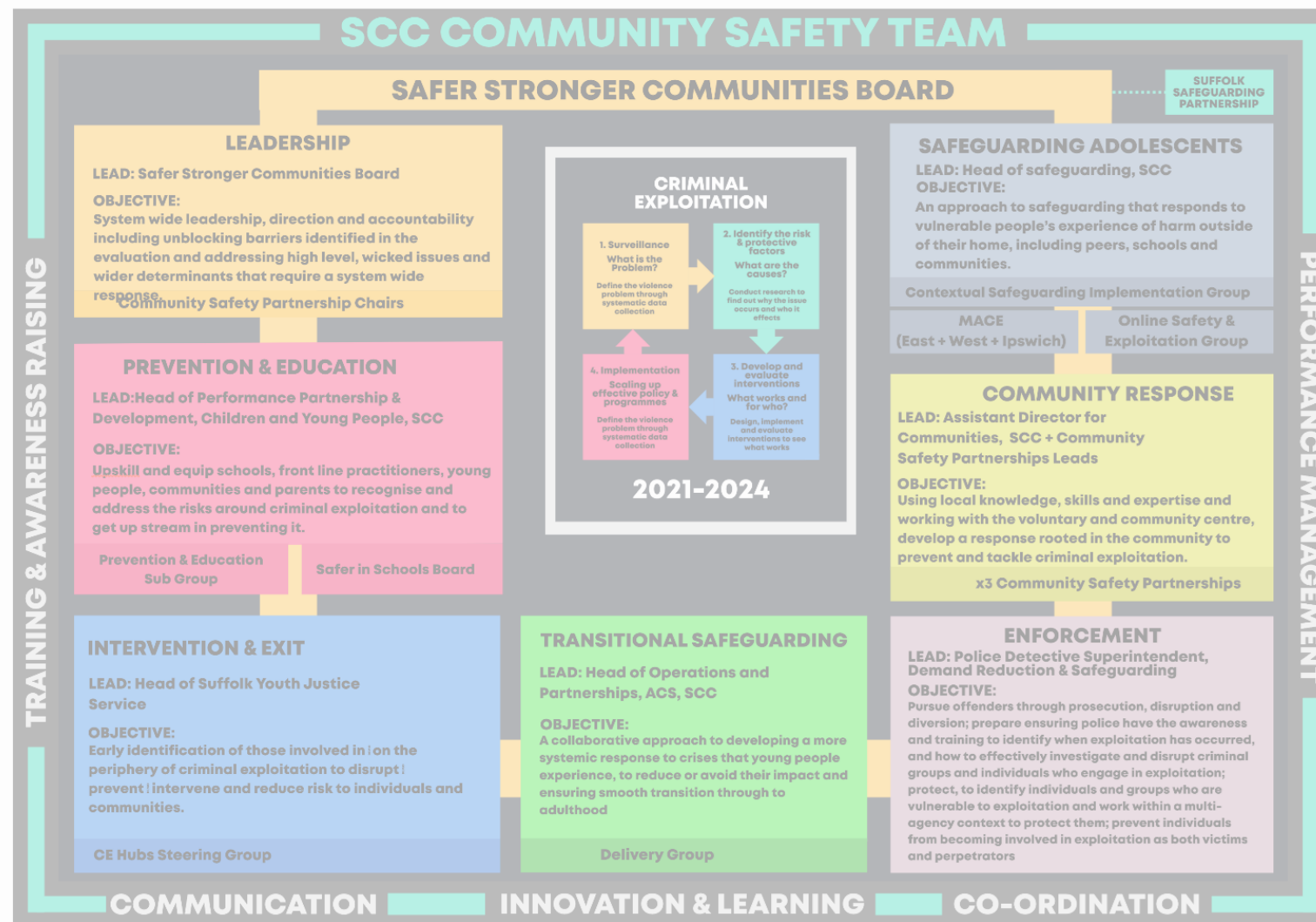
# INTERVENTION & EXIT

**LEAD:** Head of Suffolk Youth Justice Service

## OBJECTIVE:

Early identification of those involved in on the periphery of criminal exploitation to disrupt prevent intervene and reduce risk to individuals and communities.

**Hubs Steering Group**



Activity	Measure	Q1 & Q2 2022/23 Activity Update
Explore opportunities to work with Police Youth Engagement Team (Ipswich)		
Recruit Hub Staff	Hubs fully staffed and operational	<ul style="list-style-type: none"> <li>1 staffing change in the West CE hub – with new grade 5 starting in October</li> <li>Following approval of CE Hub in North (Lowestoft) – two part-time G5 recruited (starting Nov 2022)</li> </ul>
Create Hub Steering Group	Multiagency SG in place which includes relevant partners which directs manager and work of hubs	CE Hubs Steering Group merged with Safeguarding Adolescents Contextual Safeguarding Implementation Group in September 2022. Activity COMPLETE.
Implementation of hub team - skilled and experienced team to work with children, families, communities and partners to reduce risks of CE	For identified hub cohort: reductions in - Police intel reports - Safeguarding interventions (Complex strategy meetings) - Criminality - Incidents of serious youth violence	Activity of CE Hubs – see pages 25-29
Capture the views of children, families, community and partners in the creation and development of hubs	Childrens wishes and views are represented and listed to in the work of the CE hubs. Children and young people and families are given safe and inclusive opportunities to express a view. Communities and partners are given opportunities to express views on the CE hubs.	<ul style="list-style-type: none"> <li>Focus group with a group of children at Newmarket academy to gain their views of where they feel safe / unsafe. Information shared with B&amp;D council. Exploring a skate park event in the summer - to help raise the profile of it being a safe space and community engagement. The CE hubs will support.</li> <li>Team reported, through sessions with Year 6 pupils: concerns that children were regularly feeding back that a way to keep themselves safe is to carry a knife. With children as young as 10 it was becoming the 'norm' to carry a weapon for their own safety. Following a meeting with public health, education and police we agreed: Crucial crew can be reviewed ; Message in Suffolk headlines and resources offered to school via the portal and one stop cop programme. Practitioners with YJS/CYP reminded to regularly have conversations with their children around how they keep safe. Police/public health to revisit safety survey to all children - last done in 2018 to see what may have changed and children's views.</li> <li>Parent engagement through summer activities – on Howard Est in the West. Disclosed they would like to more know more about CE. Ce hubs working on the development of parent drop ins linking to the family hubs</li> <li>Linked to Youth Engagement Hub re YP in Maple Park area/Roma Community. Developing opportunities for the YP in the area.</li> </ul>

Activity	Measure	Q1 & Q2 2022/23 Activity Update
Increase skills, understanding and expertise of CE	reductions in - Police intel reports - Safeguarding interventions (Complex strategy meetings) - Criminality - Incidents of serious youth violence - Young people involved in CE going into care	<ul style="list-style-type: none"> <li>▪ CE Hubs Practitioner co delivered Safeguarding Adolescent training</li> <li>▪ Development of the peer parent webinar – delivered 2 sessions. Delivering targeted support to 5 parents.</li> <li>▪ Joint meeting with education and pushforward (alternative education provision - to help progress partnership working and information sharing. SPOC identified in YJS and EH. Information agreement to finalised</li> <li>▪ Development of safety planning tool in the CE Hubs team – 2 team consultation around safety planning which practitioners will then share with other professionals</li> <li>▪ Piloting Police intelligence form in the west</li> <li>▪ 1 hour sessions delivered to the MASH staff</li> <li>▪ ACS Workshop delivered - Junior Smart Criminal Exploitation and County Lines, Recognising and Responding to the Needs</li> <li>▪ Practice workshop to CYP Ipswich South and East on CE Hubs and Pathfinder Resources.</li> <li>▪ Developing a session for the safeguarding Forum on 7/11 session around CE parenting and session jointly with a parent with lived experience.</li> <li>▪ 13 parents have/or are receiving direct support from the CE Hubs</li> <li>▪ Linked to The Mix Outreach workers to support work in the local area</li> <li>▪ Working with Access Community on community projects across both the South and West – request to deliver workshop to the team on CE – to deliver with ASPIRE</li> <li>▪ In partnership with probation and MAPPA developing support for young adults in custody: CE Hubs will engage with 6 Young adults linked to SYV. Intervention framework:               <ul style="list-style-type: none"> <li>▪ Practitioner needs to build relationship and rapport with individual</li> <li>▪ Need for practitioner to be trauma informed</li> <li>▪ Need for practitioner to be mindful of maturity</li> <li>▪ Explore awareness of current situation</li> <li>▪ Explore how individuals avoid gangs</li> <li>▪ Explore how individuals can avoid exploitation</li> <li>▪ Explore how the individuals keep themselves safe</li> <li>▪ Explore how the individuals view where they are in the local community</li> <li>▪ What needs to change in the local community to move away from this culture</li> </ul> </li> </ul>

Activity	Measure	Q1 & Q2 2022/23 Activity Update
Increase self-belief in young people	Reduction in missing episodes - improved school/college attendance - school exclusions (increased safety) - More YP in cohort engaged in positive and structured activities/ FLATs	<ul style="list-style-type: none"> <li>Supported one child since completion of FLATs – over the past month positive changes, now working, removed from police operation no new intelligence. Started to distance self from peers and improved relationships at home. Has agreed to a family meeting to discuss next steps.</li> <li>High risk YP supported integration into pushforward provision – attending on a regular basis.</li> <li>Trauma informed practice - Community case formulation completed for Nacton and shared with partners re next steps.</li> <li>Meeting with Community access – South and West re joint summer activities in hot sport locations.</li> <li>Safety planning support to 5 young people – on going</li> <li>Keep safe discussions on going when delivering outreach sessions in the community. IE asking children how safe they feel, are they are of Wi-Fi hotspots, how to access support.</li> <li>Supporting a group of young people at King Edward Upper that were identified as at risk of CE. General discussions – group will split into boys and girls groups.</li> <li>Completed an initial session at the YMCA in bury - regular drop-in sessions to support residents and staff around keep safe.</li> <li>South – on going weekly drop-ins at Gibson Lodge and YMCA</li> <li>July 5 &amp;6 support enrichment day at King Edwards.</li> <li>Offering more targeted work to 14 children</li> <li>Working with Aspire to support enrichment days delivered in County Upper School and Sybil Andrews – session is based around keep safe/safety mapping.</li> <li>Developed weekly session in Nacton based at Murrayside – sports/activities</li> </ul>

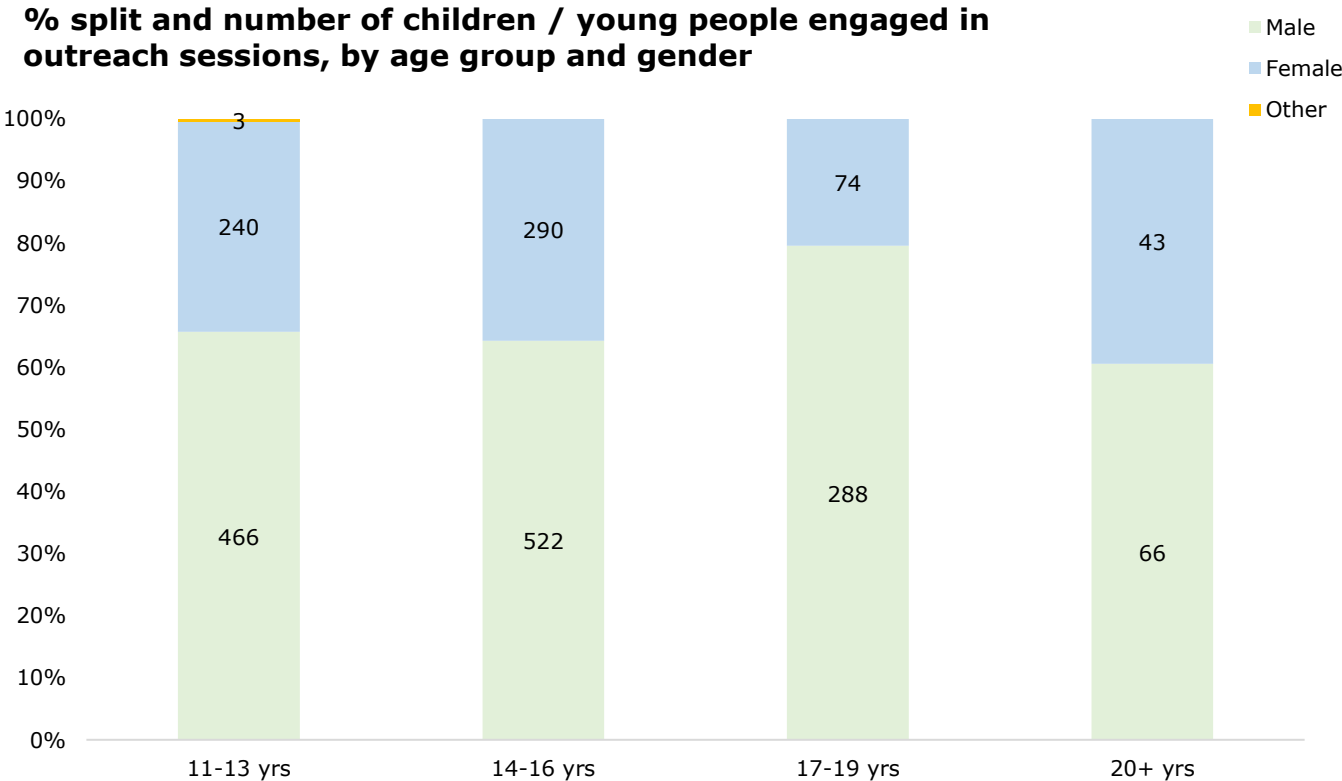
Activity	Measure	Q1 & Q2 2022/23 Activity Update
Increase safety in hotspot areas for children at risk of exploitation	Identifying and providing community guardians . feeling safer in high risk neighbourhoods	<ul style="list-style-type: none"> <li>▪ Targeted locations via MACE in both South and West.</li> <li>▪ South has included a presence in a known area for drug use to help gently disrupt the activity.</li> <li>▪ West – location identified and on-going outreach session, both resident and business surveys of the area. Development of activities over the summer.</li> <li>▪ Via mapping meeting fortnightly session in mid Suffolk to engage with young people.</li> <li>▪ Joint summer activities in partnership with Access Community Trust and Aspire</li> <li>▪ Supporting community shops to help community engagement (South)</li> <li>▪ Team linking with link officers to help target areas.</li> <li>▪ Following a positive planned event at Pot Black – identified that this is a safe place for young people. To develop understanding of community guardians with staff.</li> <li>▪ West Targeted 3 key hotspot locations for weekly activity sessions: Howard Est – BSE; - The Cage – BSE; Gainsborough field BSE.</li> <li>▪ South Increased concerns around the town centre. Increased outreach session reported intel – increase in police patrols, linked to local church as trusted adults and to increase awareness re CE/Intel. Concerns re girls and UASC in the area – increased risk to CE.</li> <li>▪ Is this OK and fearless posters to put up in McDonalds and key locations</li> <li>▪ Linked to UASC to develop: workshops with 3 targeted groups – Kurdish, Sudanese, and Afghan; help raise awareness of CE; explore resources, funding to give young people opportunities when they arrive in Ipswich to help them integrate into the area; UASC to have the opportunity to join outreach sessions with the CE hubs; explore if resources can be translated (such as Alter Ego pathfinder film).</li> </ul>
Increase community resilience support systems in hotspot areas at risk	Identifying and providing community guardians . feeling safer in high risk neighbourhoods	<ul style="list-style-type: none"> <li>▪ 2 Peer parenting sessions completed. 9 Peer parent Webinars 5 further parents around keep safe/safety planning</li> <li>▪ 7 parents receiving targeted support.</li> <li>▪ Development of community event in Newmarket over the summer.</li> <li>▪ Development of community activities in support with B&amp;D council, Access Community Trust and Aspire</li> <li>▪ May – attendance at CYP/SCC care fair to help engage with children and families and raise awareness of keeping safe.</li> <li>▪ Outdoor cinema event August 2022 Howard Est partnership with Access Community and St Eds Council. – 120 people from the community attended. Received positive feedback from parents in the area.</li> <li>▪ Outdoor Cinema event planned for 13 October on the triangle Est – partnership with IBC, Access Community, Police, CYP</li> <li>▪ Development of parent drop ins one in the west and one in the south</li> <li>▪ Team targeting local business in hotspot locations and locations where children maybe – seeing if they can display posters on Is this ok, and in staff rooms from the look closer campaign.</li> </ul>



# CE Hubs – Outreach Activity

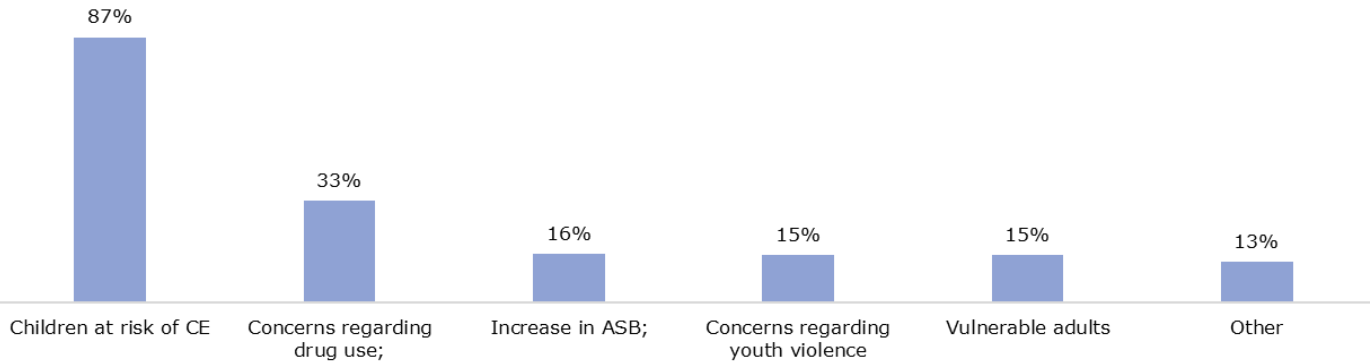
- A total of 310 outreach sessions had been held by the end of September 2022. 111 sessions between July 2021 and end of March 2022, and a further 199 conducted between 1<sup>st</sup> April and 30<sup>th</sup> September:

Babergh	East Suffolk	Ipswich	Mid Suffolk	West Suffolk
4	17	123	3	163

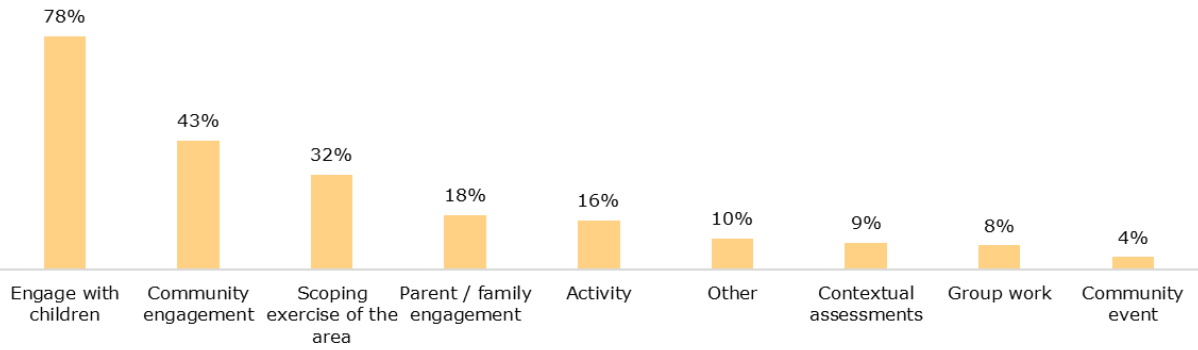


# CE Hubs – Outreach Activity

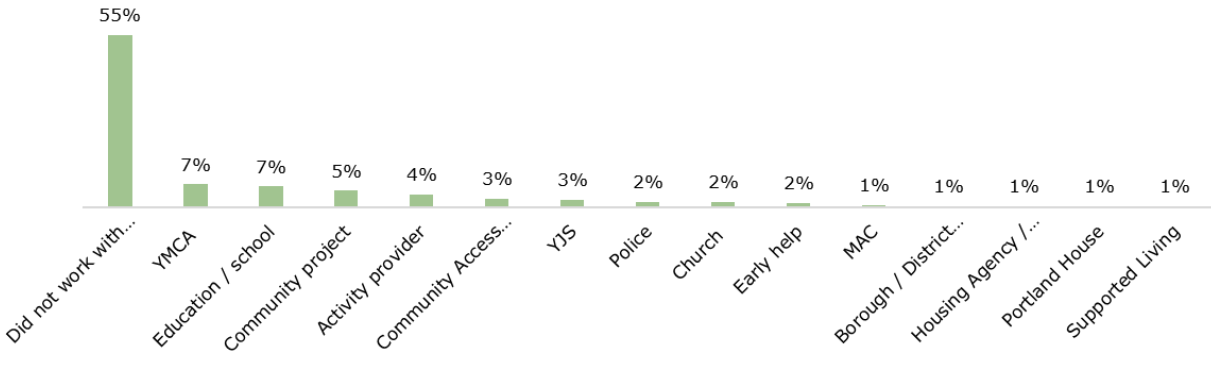
**Reasons for working in the chosen area**  
(multi-response, % of all sessions)



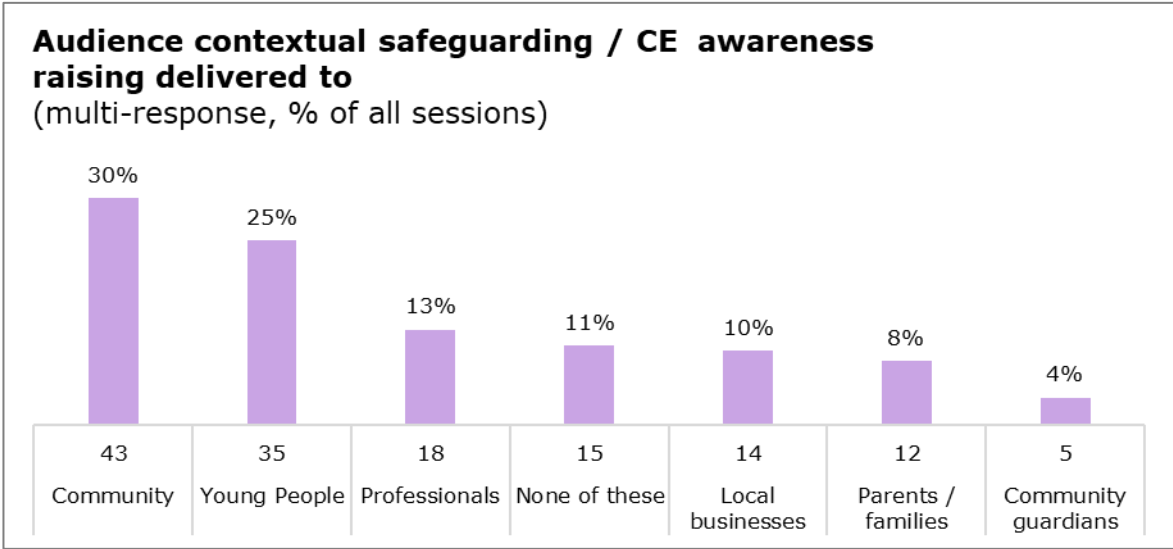
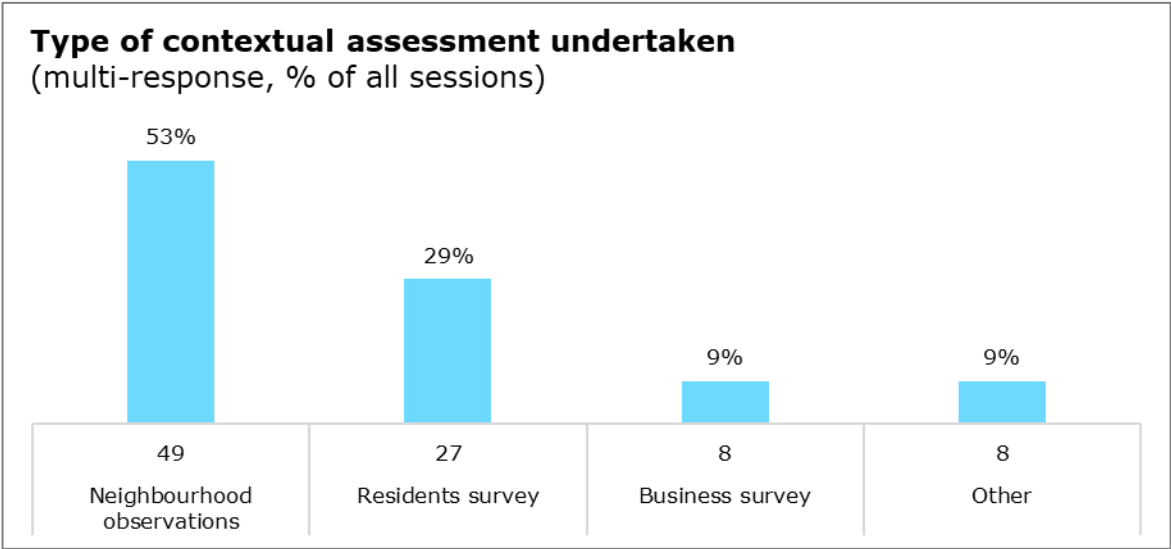
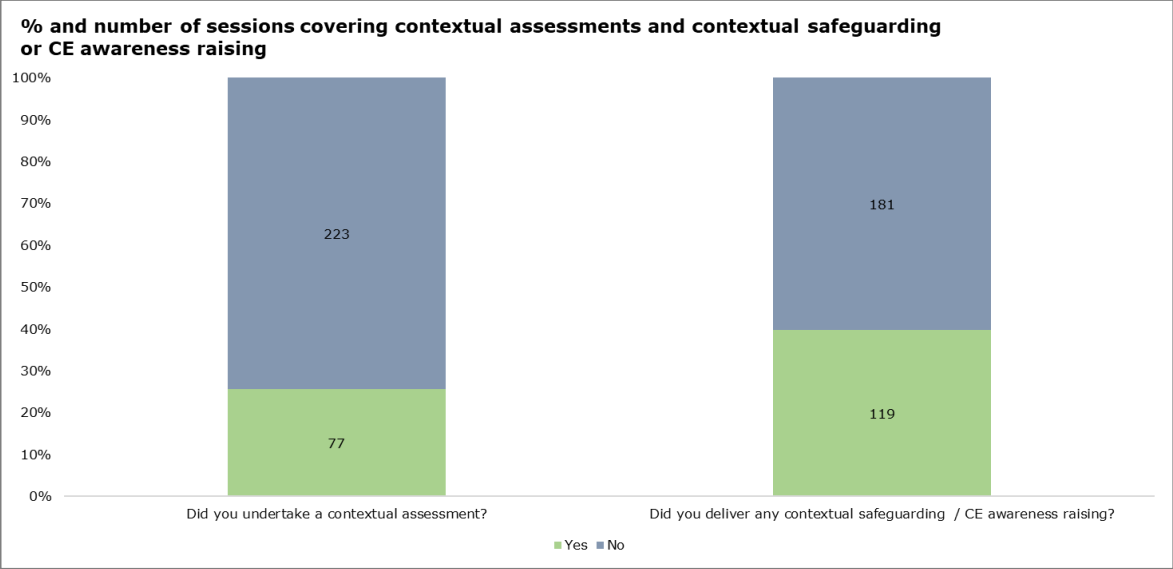
**Aims of sessions**  
(multi-response, % of all sessions)



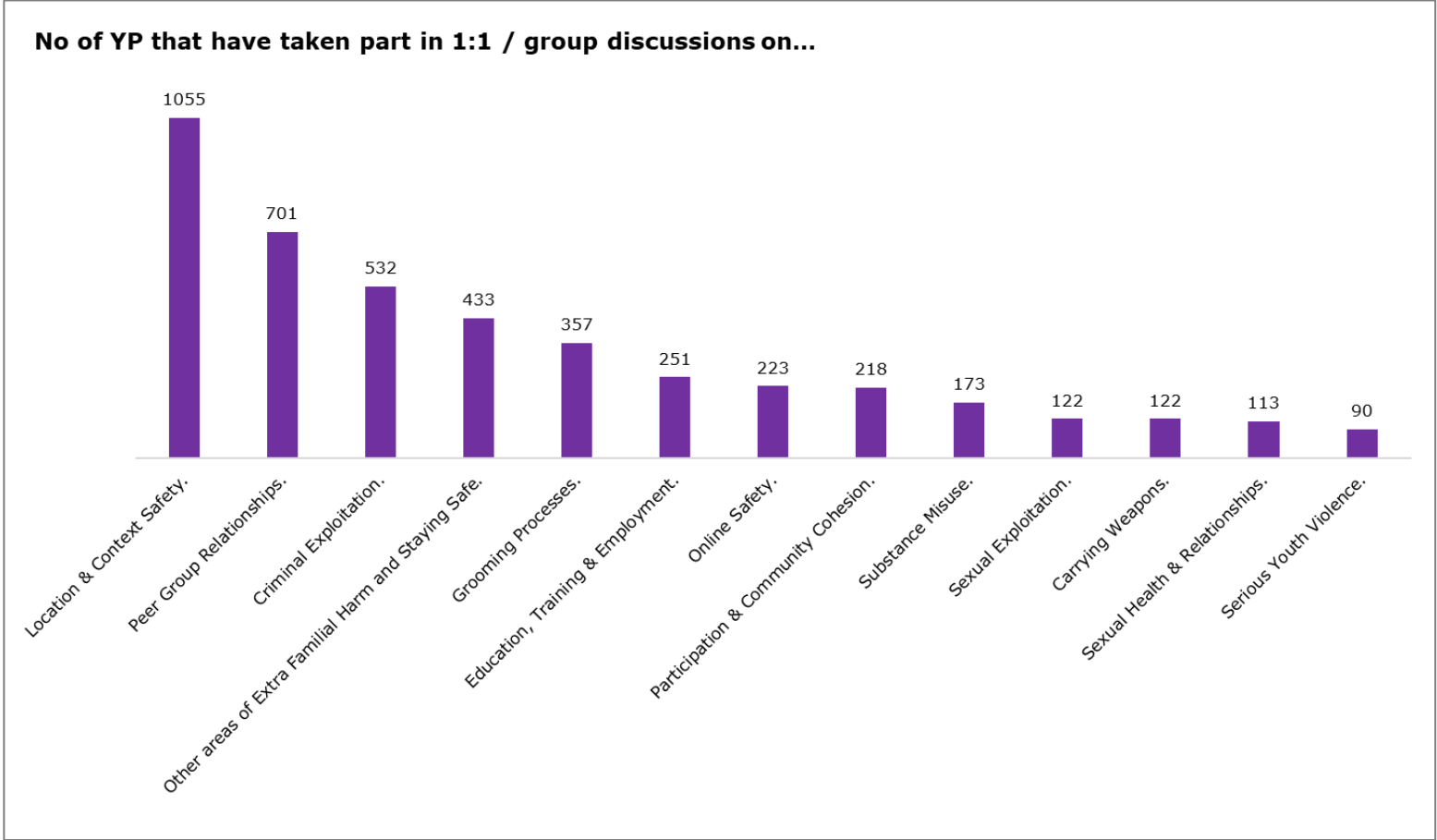
**Working with other organisations**  
(multi-response, % of all sessions)



# CE Hubs – Outreach Activity



# CE Hubs – Conversations with YP



No of YP demonstrating identification and implementation of safety planning / strategies to increase their safety	No of YP engaging with social action / participation in their communities including consultations
791	85

CE Hubs – have held 165 F2F sessions with 46 individuals in total since the CE Hubs were formed; with 101 sessions taking place between April and September 2022.

AIM OF SESSIONS	
Safety planning	
Introduction to probation officer	
Joint planning session, between CCE hubs, Probation and BB. We looked at how CCE can support YP on his Court Order. YP was happy to do some of the intervention with the CCE hubs. Due to another stabbing to one of his friends, we revisit his safety plans. Especially when he is living in a rival gang areas. Only leave his home when necessary, switch up the path he takes if he has to go out. Wear sensible clothing and foot wear. If threatened go into a crowded public place. Notify your family were you going and always have your phone with full battery. Plus to take him safely to his probation appointments.	
Welfare check as well as getting his views on how to prevent YP from joining gangs	
To support YP to his job centre appointment.	
Supporting YP to probation - building a relationship	
Enhance safety plan and information gathering by CYPS	
To persuade YP of taking up the offer for his A level	
to celebrate yp achievement's	
to congratulate YP on his good grades	
to explore safe spaces in their community, and discuss exploitation.	
To meet YP and be introduced to him. To inform him of extra support which he can receive from the CE Hubs.	
To re-introduce following gap between engagement. To welfare check following release from recent arrest. To remind DK of the service/support the hubs can offer and to let him know that I will be making contact regularly.	
Catch up regarding recent events such as removal of his arm cast which has been on since his arm broke. YP is feeling positive about this and is doing the exercises needed to work this back toward usual strength. Discussion regarding school starting back and thoughts on whether or not he will attend, plans for future etc. YP still does not feel he will attend school. Had discussions about trailing a day to see how it is as it has been a long time since he has seen everyone and gossip moves on etc. YP still seems reluctant to go. Have had encouraging conversations about this and also future plans/exams etc. will continue to touch base regarding school in each meeting. Discussions about sleeping pattern. YP wants to swing this around now as all of his friends are at school during the day anyway, they would now do things late afternoon after school anyway and he doesn't want to miss this. Spoke about potential activities in the upcoming holiday and YP would like to bring his group along and we have spoken about arranging to meet up with his friend group to familiarise with them and to complete necessary paperwork too, when required.	
Engagement with YP’s Mum was very positive and have had many different discussions. I have also spoken to Mum about receiving bereavement counselling as at the moment she is feeling very low and she says that some of her family have not allowed her to move on since the loss of her husband.	
To meet YP in his home environment with Mum and introduce ourselves. Listen to YPs views and opinions on what is going on at present. Also to discuss continuing to work with YP and his peer group regarding CE. We touched upon this in our meeting and have asked if moving forward he would be happy to complete work with us both in and outside of the office environment with his group and also some activities. He would like to do this and Mum is also keen for him to undertake this too.	
To engage with YP separate from Mum and get him more used to engaging with me on a 1:1 basis. We are going for short drives and he is engaging with me well on these and able to start relationship building.	
To engage with all YP from Alex house and support staff by doing a Easter activity.	
To address concerns a round county lines	
To address concerns around grooming	
Look at education and employment options as he is NEET at the moment and that he claimed that he was now bored as all his friends are either in work or further education.	

# Case study 1

## Concerns

- Local Primary School raised concerns re YR 6 Students, potential concerns after school
- Location has been an area of concern to police , district council , CYP on going concerns re ASB, Drugs, exploitation
- Out of county child arrested in a specific location on the estate

## Response

- Police requested we target the area
- Completed Neighbourhood Observations
- Target area for outreach sessions
- Safety mapping Workshops with year 6 pupils. Both year 6 pupils and some young people advised us that they felt the area was unsafe.

## Actions

- Community event 8/3 to launch the new Community Centre. Led by Borough Council – partners, third sector organisation present to engage with community.
- Working with Partners look at the development of activities and family/parent support – family hubs
- Reported concerns/feedback to police and Borough council.
- Review sessions with the children

## Case study 2

### Concern

- Team reported, through sessions with Year 6 pupils: concerns that children were regularly feeding back that a way to keep themselves safe is to carry a knife. With children as young as 10 it was becoming the 'norm' to carry a weapon for their own safety.

### Actions

Following a meeting with Public health, education and police we agreed:

- Crucial crew can be reviewed
- Message in Suffolk headlines and resources offered to school – via the portal and one stop cop programme.
- Practitioners with YJS/CYP reminded to regularly have conversations with their children around how they keep safe.



# Case Study 3

On the 3rd August 2022, in partnership with Access Community and West Suffolk Council, the Criminal Exploitation (CE) Hubs held an outdoor Cinema event on the Howard Estate in Bury St Edmunds. Approx. 100-120 members of the community attend – this included children and families.

The event enabled for positive community engagement and an opportunity to bring the community together; many brought picnics and were interacting with each other throughout the evening to support community cohesion. This along with the summer activities the CE hubs delivered in the area has enabled the CE Hub to engage with the wider community, raising awareness of its work and develop some trusted relationships. These were also the start of conversations around criminal exploitation. The feedback from this event and the summer activities, has been positive. Many parents commented that they were surprised the event was free, and in the current climate and having something local to them was very welcomed!

Parents feedback:

*'We LOVED the outdoor cinema. One of the highlights of the summer. Thanks for organising.'*

*'Me and my son had a lovely time tonight, thank you'*

*'Thank you for this, my daughter and friend had a lovely time'*

*'My son J\*\*\* attended this last night and had a really great time! So great you do things like this for them. Thank you!'*

*'My wife and son came to this earlier and didn't spend a penny and got to spend time together alone which doesn't happen very often.'*

*'Great night with my family, thank you'*

Parents asked for more information on the work of the CE Hub, which led to development of parent drop-in sessions linked to Howard Estate Family Hub.

Due to the success of this event, in partnership with the Police, Access Community, Ipswich Borough Council and Children and Young People's Services the CE Hubs are looking to hold a similar event in Ipswich.

## Case study 4

### Concern

- Serious youth violence issue in Ipswich, stemming from the involvement with two rival urban street gangs in the area. Gap analysis undertaken by Suffolk Police, Probation, Youth Justice, Children and Young People's Service, Leaving After Care Service and Multi-Agency Public Protection Arrangements (MAPPA) identified a gap in cross agency intervention to support those adults in custody who remain linked to the gang lifestyle and are struggling to move on and reduce their reoffending.

### Actions

Suffolk Probation, Suffolk MAPPA, the South Neighbourhoods & Partnership Team, and the CE Hubs developed a pilot to use the skills of the CE Hubs, their Trauma-informed approach and their understanding of the nuances of the local gang culture. Using similar tools and diversion techniques, the CE Hubs team engaged with a number of young adults in custody to divert them from gangs.

This pilot was felt to be successful, with very positive feedback from those young adults being engaged with, which has led to a funding bid being submitted to expand the pilot within Suffolk.

## Case study 5

### Concern

CE Hub South raised concerns with the SCC Unaccompanied Asylum-Seeking Children (UASC) Team, that an increasing number of these children and young people were congregating in the center of Ipswich (around McDonalds; known as 'Junkie Alley').

### Actions

In collaboration with the CE Hub South, Suffolk New College, the police and social care, the UASC Team ran three 3 sessions (one each with 9 Kurdish, 11 Afghan and 13 Sudanese children / young people) to raise awareness around exploitation, using many of the tools and guides developed through the CE Programme.

Feedback from the participating C & YPs was positive and UASC will run these sessions with new arrivals going forward.

# Case Study 6

Taken from Sibyl Andrew's Academy (Bury St Edmunds) Newsletter:

"On the 12<sup>th</sup> September, Sammie and Rebecca from the CE HUBS, joined other professionals from the Police, Terrence Higgins, Women's aid, Turning Point and the ASPIRE Project to deliver a full day of workshops at Sybil Andrews Academy. Across the day, we hosted five 1 hour sessions, speaking to over 140 year 11 students. Our session promoted open discussions around contextual safety, exploring the ways that young people can keep themselves safe, both online and whilst they are out in their communities. As the first session that we have delivered on this scale, we both came away feeling that the workshops were positive, with good discussions and a feeling from us that we had also learnt something from the year 11's.

The discussions around their online use and how they feel this can be a safe space was really thought provoking and sparked a good debate amongst all the young people. It was enlightening, but also worrying to hear the number of different online platforms that are accessible to young people. More worrying to know just how easy it is to be somebody different online, with particular focus around lying about ages to access different social media and online platforms.

The meaning behind the word "safe" was deeply explored, with specific concentration on what safe means personally and what this looked like in practice. Many talked about the idea of feeling comfortable and protected as an acknowledgement of being safe. When asked about whether they felt different locations were safe, it was interesting to see their perceptions change depending on time of day, who they were with and what they were doing.

We were able to put the young people in charge and let them tell us how they keep themselves safe in general, as well as if they were in a scenario that made them feel uncomfortable. They came up with a range of safety tips including having charged mobile phones, changing routines and setting online accounts to private.

Feedback from those who engaged in the session was positive, with some saying it had helped them to think and become more aware of their surroundings and online use. The school were appreciative from the input of all professionals, even acknowledging that they had benefitted from the day and raised their awareness around some of these issues. The day really highlighted the importance of having conversations with young people about where they feel safe. Whilst having discussions with your young people, if they mention a location that raises concerns around Exploitation, then you can complete our professional's form."

The CE Hubs were one theme included in the SODA survey conducted in September. 21 of the 39 respondents had engaged with the CE Hubs. Of the 18 that had not engaged, 2 were unaware of the hubs’ existence while the other respondents had no need to engage (yet).

Have you had any engagement with the Criminal Exploitation Hubs in either Ipswich or West Suffolk?	
No	18
Yes, with both hubs	8
Yes, with the hub in Ipswich	7
Yes, with the hub in the West Suffolk	6

Why have you not engaged with the hubs?	
I was unaware of the CE Hubs existence	2
This is not relevant to my role / work	5
I have not had a reason yet to engage the CE Hubs	11

19 out of the 21 respondents who had engaged with the hubs believed they added value to existing services (the remaining 2 were unsure).

See next page for comments on CE Hubs.

Additional dedicated resource - can feed into them our areas of concern and link very well with the hub in the west
I have worked with the CE Hub on a number of levels but mainly due to concerns raised regarding young persons believed to be exploited into low - mid level criminality or wider concerns that they are being exploited into more complex County Lines behaviour that has required a multi-agency response.
As a YJS practitioner the CE hubs have built some fantastic relationships with some of the YP i have supported. They have been a branch away from statutory orders which can sometimes hinder engagement. Paul Grant has a fantastic way with YP, by doubling up doing joint appointments with Paul it has opened the door for the YP to meet me and want to engage with me. They have also supported some of the families of the YP i work with greatly.
I have passed on information regarding criminal activity in different areas , i have passed on information regarding a YP involved in criminal activity in another area so they are aware
Working in partnership with the Suffolk youth justice team it has been a great help to our practitioners to inform families about what they do in joint visits. It is beneficial to working in partnership with the CE hubs team, they assist us in educating our yp's that may be at risk or currently being exploited.
Co-Working with Paul Grant and Lesley Saunders on cases which sit under CE Hub and the YJS. Including parent webinar, information sharing and prison visits.
I have liased with the CE Hub in the West. They have been extreamly helpful and have taken referrals from myself pre-mace, rather than waiting for MACE to take action.
The hubs have been an important part of the intel building structure during their engagement with individuals. I have also had positive feedback from parents of some of the young children that they have worked with.
Great awareness and engagement with Children/young people
Further support to an already strained service - with specific focus on important topic
The hubs go back to 'youth work led approaches' that are so integral to communities, particularly communities affected by deprivation, drugs and serious youth violence. The approach of all staff in the team, how they develop relationships, share information and provide overall community support is really good. I also value the collaborative approach that the team takes. Having a team that can provide consultations to other services across CYP and be out in the community within the child's world is really important and in my opinion can only aid the work CYP does.
I have previously reported back in 1-2-1 about the value this service brings -
They are doing outreach work which is desperately needed. Encouraging and supporting communities to take responsibility for safeguarding young people.
They fill a gap in service provision in that can provide assertive outreach quickly. They also intervene with hot spot and high-risk places and spaces, build community resilience and work in a contextual way, as well as working with at risk groups and individuals. Hubs have deliberately set out to offer something different and complementary and avoid duplication and have been successful in this. They are very highly regarded by police partners.
bringing together experts and professionals in one place
CE Hubs have a frontline view into the community that other services don't always have. Their relationship with young people is unique allowing them to see different aspects of a young person's life and their space in the community. It also means CE hubs are able to see how the community is changing and reach areas that may otherwise be unknown.
People who understand how/why/who/challenges of exploited YP. They are 'on the ground' and see things as they are happening - a true reflection. Good rapport with young people. They are not social workers so they may be easier for children/young people to approach
To have people in the community actively engaging with young people is really beneficial to building relationships and offering support
Source: SODA survey 'Understanding Impact of CE Programme', September 2022.

## PREVENTION & EDUCATION

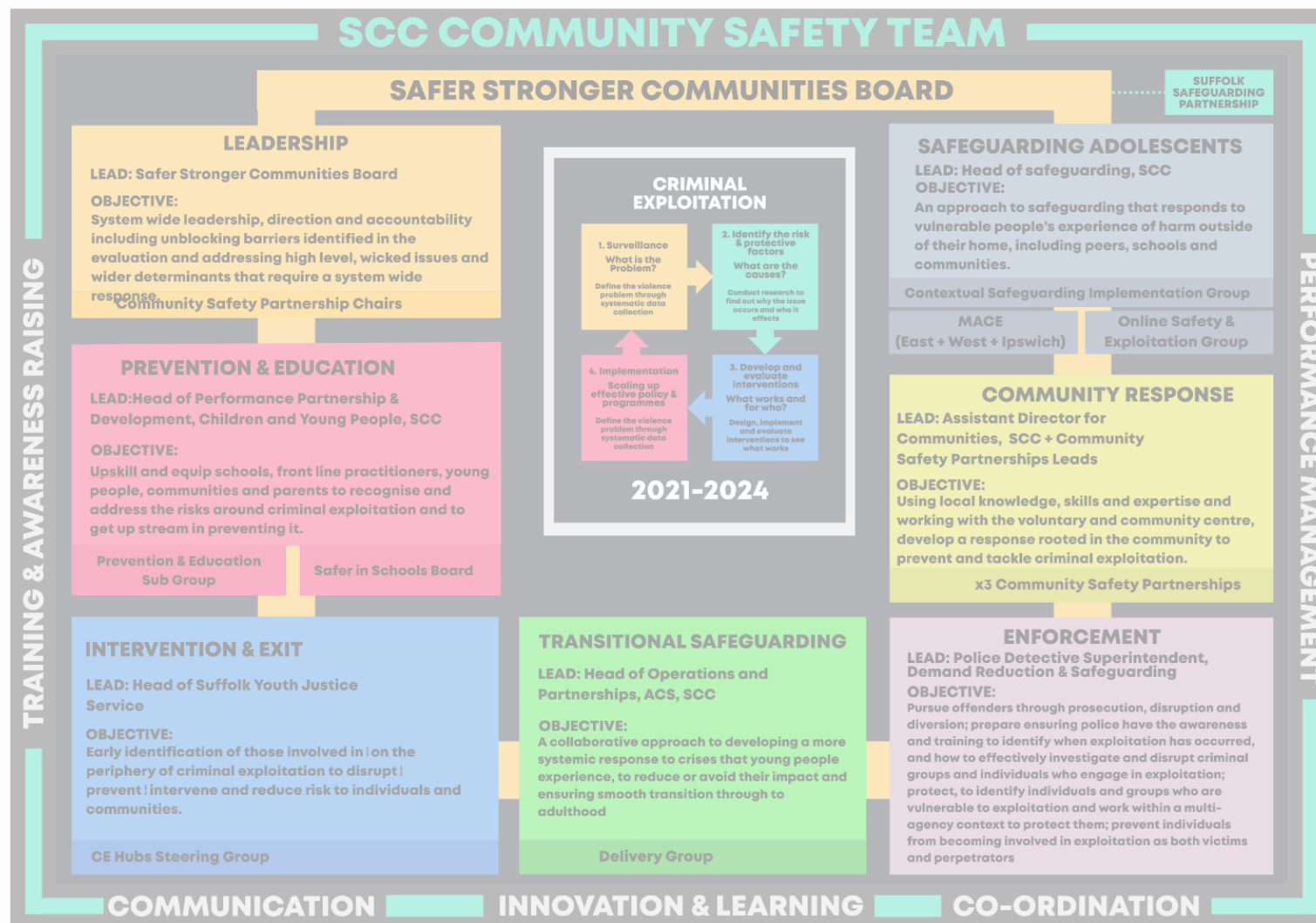
**LEAD:**Head of Performance Partnership & Development, Children and Young People, SCC

### OBJECTIVE:

Upskill and equip schools, front line practitioners, young people, communities and parents to recognise and address the risks around criminal exploitation and to get up stream in preventing it.

Prevention & Education Sub Group

Safer in Schools Board





Activity	Measure	Q1 & Q2 2022/23 Activity Update
Develop a county wide multi agency communication campaign to raise awareness of the risks to children and Young people	All schools, APs, Colleges and training Provider receive clear statement from SCC about the importance of vigilance identify children and young people at risk of exploitation	<ul style="list-style-type: none"> <li>Developing Suffolk Education Partnership with Trusts / CEO's- Steering Group in place by end 2022 to lead with task groups to focus on shared priority areas – including Behaviour / Attendance</li> <li>LA maintained Schools Leader Network establishing a group of leaders to connect / collaborate across schools.</li> </ul>
Support the development of 'One Cop Stop' to maximise impact and reach aligned to RSHE	All schools have the opportunity to engaged with One Cop Stop. Engagement shared with SCC Education and RSHE Schools Coordinator	<b>See slides 46-54</b>
Develop and implement a continuous Suffolk approach # SuffolkLooksCloser. Partnership with CE Partnerships Officer and TCS Prevention Officer	All organisations across Suffolk have access to the materials and training resources	<ul style="list-style-type: none"> <li>Eastern Region Prevention Officer on phased return to work. Meeting to be held with CE Lead &amp; CE Partnerships Officer to look at Prevention &amp; Priorities for Suffolk &amp; Eastern Region Q2</li> <li>West Midlands Look Closer Intensification Week training offer disseminated across the system 26th- 30th Sept</li> <li>Preparation of Social Media Comms #SuffolkLooksCloser to support Look Closer week Q3 (3-9th Oct) disseminated across SSCB partners Look Closer resources and engagement led by Police.</li> <li>Exploring engagement with Taxi companies – ongoing Q3/4</li> <li>Liaising with TCS re: Social Media offer for Suffolk</li> </ul>
Maximise the impact of the SCC Safer in Schools (SiS) Board and its focus on the protective factors of good school attendance	Exclusion/Suspension rates are reduced. Reduction in use of part time timetables. persistent absence is reduced. No inappropriate use of EHE. Reduction in the numbers of children missing education (CME)	<ul style="list-style-type: none"> <li>Permanent Exclusions/ Suspension data now being shared with CE Coordinator as contextual intel for Hot Spot mapping / MACE as identified by CE Lead.</li> <li>Pex/ Suspensions data collated evidence to support successful Northern CE Hubs proposal, Situation in North of county flagged as no Alternative Provision &amp; highest number of Permanent Exclusions.</li> <li>A new Education Access Team has been established for September 2022 to provide dedicated support for any child receiving a Permanent Exclusion. A full report on children known to be missing education has been completed for the Education and Children's Services Scrutiny on October 13th 2022. Capacity has been increased to Children's Service's Intelligence Hub. This resource will be dedicated to linking data and information between Social Care and Education Services. This will strengthen the work we have done in monitoring the engagement of children vulnerable as a result of having social care or youth justice involvement. Links are being forged between the Virtual School and Youth Justice in relation Education Employment and Training Panel. This builds on the support of the Virtual School Head's education surgeries which restarted in June 2022.</li> </ul>

Activity	Measure	Q1 & Q2 2022/23 Activity Update
Provide a clear and accessible Training Offer for education, professional, community groups and parents/carers. Live training brochure and training delivered and developed based on identified need	There is a comprehensive accessible training offer based on an analysis of need. How many people attend the training? What are the reasons for not attending? What is the impact of the training?	<ul style="list-style-type: none"> <li>• Working with National Working Group Safeguarding in Sports Lead – opportunity for Suffolk partners to attend fully-funded CPD for teachers, the wider children’s workforce, sports coaches and forward-facing youth work professionals and volunteers who work with children delivered by Young Gamers and Gamblers Education Trust (YGAM).</li> <li>• Attended &amp; input into County Lines Peer review re: CE and Modern Slavery work/ training and challenges in Suffolk. Highlighted intel reporting / information sharing &amp; need to embed learning to inform&amp; strengthen practice</li> <li>• Partnership working with CE Coordinator, MAC Practice Manager &amp; CE Partnerships Officer to develop bespoke practical case study based 1 hour lunchtime workshops for D&amp;B partners focused on Home Office Disruption Toolkit. Mini MACE Case Study workshop chaired by MACE Chairs, designed to focus on a contextual approach ‘Places, Faces, Spaces’ &amp; tools/ orders available to Borough &amp; District partners to support disruption &amp; prevention’.</li> <li>• Appropriate Adults joint training package developed with Norfolk colleagues.</li> <li>• Designed training &amp; resource package for delivery across Appropriate Adult (AA) service - with Norfolk YOT/ Suffolk &amp; Norfolk Police. Additional case study based workshops being designed for Q4.</li> <li>• One Cop Stop / School Liaison Officer and CYP16+ Resources day, supporting development of OCS packages in partnership with RSHE Schools Education Coordinator.</li> <li>• Planning Home Office Disruption Toolkit &amp; CE Refresher workshops for D&amp;B partners; case study based, focussed on practical implementation of toolkit and understanding of CE (to be held in Q3).</li> <li>• Planning and development of CE Refresher &amp; case study for CIB / Police Analysts.</li> </ul> <p><b>See slides 39-45</b></p>

## In 2022/23 so far the following training sessions have been held

What	Delivered by	# of attendees
CE workshop to DWP	SCC Communities CE Lead	20
Ipswich SCITT workshop	SCC Communities CE Lead	30
School Nursing Team workshop	SCC Communities CE Lead	45
Norwich & Kings Lynn SCITT	SCC Communities CE Lead	30
Bungay SCITT	SCC Communities CE Lead	26
2 x CE / MACE Refresher workshops for MASH	Designed & co-delivered SCC Communities CE Lead & CE Partnership Officer	51
Understanding Exploitation and Strengthening Practice	Kendra Houseman	38
Bespoke workshop for ACS 'Criminal Exploitation and County Lines Recognising and Responding to the Needs'	Junior Smart OBE St Giles Trust	30
2 x Contextual approach 'Places, Faces, Spaces' & tools/ orders available to Borough & District partners to support disruption & prevention'	Designed & co-delivered SCC Communities CE Lead & CE Partnership Officer	26
4 x MASH Bespoke case study workshops based on MASH referral format to focus on presented concerns, gaps in information, who else should be informed etc	SCC Communities CE Lead & CE Partnership Officer	51
CE workshop for CAS/ Youth Focus	SCC Communities CE Lead	8
CE workshop for WS Training	SCC Communities CE Lead	27
<b>TOTAL</b>		<b>379</b>

# Feedback on training delivered by SCC Communities CE Lead & CE Partnership Officer

## MASH bespoke case study workshops

- All attendees said they found the workshop extremely useful and all said their knowledge had increased.
- Specific Feedback included

<b>What main things have you learnt or found useful following the training?</b>
• That there is a bigger picture in all cases and not to accept information at face value
• As always worked in adult services, this training gave me an insight to CYP safeguarding and the laws that govern the service to protect and safeguard children.
• Completing the scenarios and discussion after

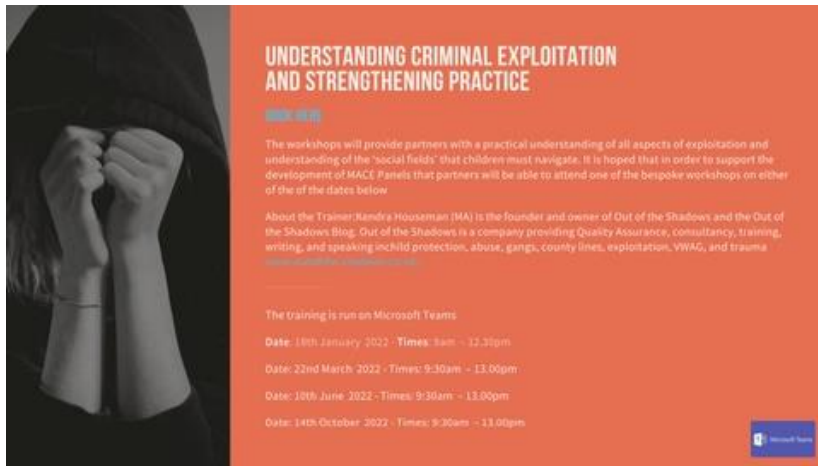
<b>Do you have any further comments or feedback?</b>
Interesting information as always
I was teamed with x who patiently answered all my questions and patiently explained the S47's and S17' and as we as professionals sometimes forget that we are mostly familiar with the acronyms of our field. In addition trainer's highlighting the language and words taken for granted in referrals has been valuable. Thank you for a great session. I would have loved to attend the training in October but on annual leave. Please et me know of any other training dates available. Thank you Lisa and Claire.

## Appropriate Adults training to Anglia Care Trust

- All attendees said they found the workshop extremely useful and all said their knowledge had increased.
- Specific Feedback included

<b>What main things have you learnt or found useful following the training?</b>
I have much more awareness of the signs, what to look for, and how to take action if I have concerns.
What to look out for when dealing with D.P.
Signs to look out for on young people involved in drug carrying

<b>Do you have any further comments or feedback?</b>
Claire and Lisa were absolutely brilliant, clearly extremely knowledgable and passionate about this subject. Both brought some needed levity to a very hard-hitting training session.
I found the training extremely valuable.....it made me realise just how valuable the role of an A.A. can be



- 1 session held - total of 38 participants, feedback from 37 people:
- All found the training useful, that the content was organised and easy to follow and that the trainer was knowledgeable about the subject.
  - How would rate your knowledge BEFORE you completed the training?  
15 = low; 19 = medium; 1 = high
  - 37 / all said their knowledge had increased following the training

Thank you for sharing the information and the story. I think everyone should have this training and hear Kendra's story!

Phenomenal training, so brave that personal experiences were shared in such an open and honest manner.

The training was incredibly powerful. Having completed some organisational e-learning on CCE and CSE prior to today's training made it really stand out how much training is taken from a professional's point of view.

WOW - That was absolutely amazing, very powerful, 100% engaging throughout and I have learnt loads. Thank you so much Kendra, what an inspiration. Would love to be kept informed of any further training sessions. Words can't express the impact of this session - thank you. You absolutely achieved what you aimed to do, help us to do see through the child's eyes. Thank you for opening us up into your world and giving us the best chance of seeing this through the child's eyes. I will put this into practice and will be promoting this training to all my schools.



### CRIMINAL EXPLOITATION AND COUNTY LINES

#### RECOGNISING AND RESPONDING TO THE NEEDS

##### ONLINE VIDEO

This training is delivered by Junior Smart OBE St Giles Trust for frontline partners working with children, young people, adults and communities across Suffolk.

The training is run on Microsoft Teams. Times: 12.00pm - 4.00pm.

This programme enables interaction throughout the session by taking part in the real-time voting for multiple choice questions & Word Clouds.

Delegates attending these sessions will have increased understanding and knowledge of the wider context and safeguarding issues surrounding County Lines operations and approaches to address the Criminal Exploitation of vulnerable individuals.

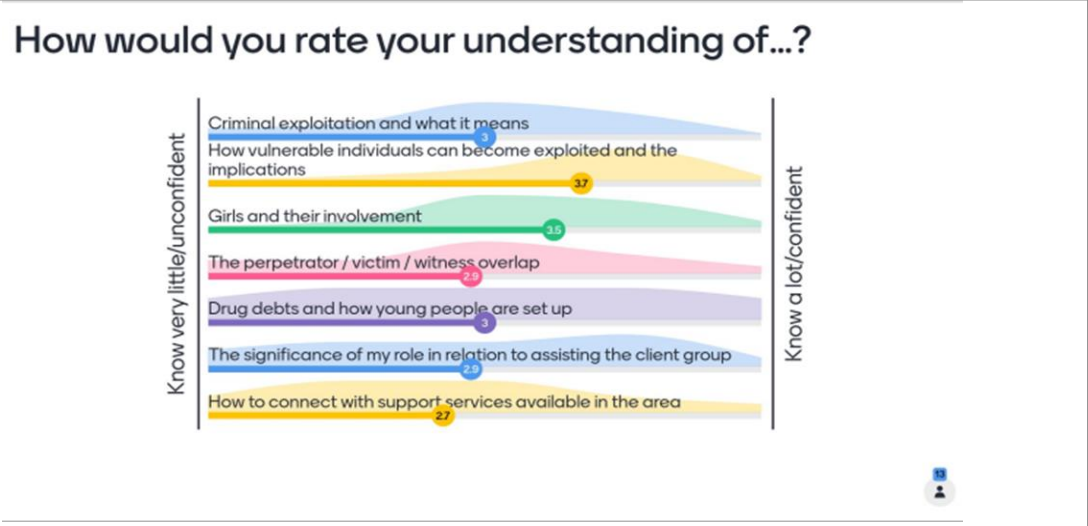
Delegates will have access to learning resources and information about what is being done locally, where to find help and support.

MORE DATES FOR 2022 COMING SOON

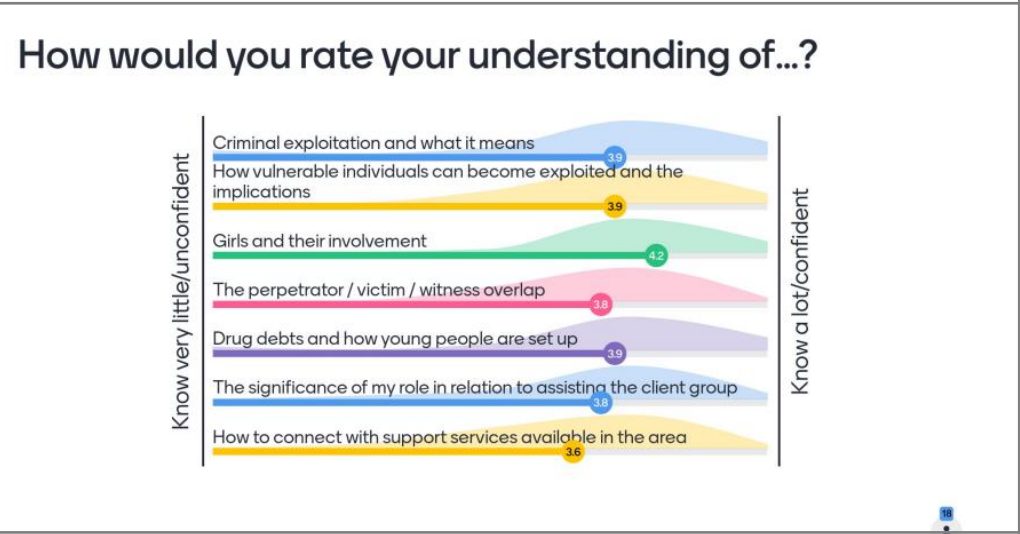
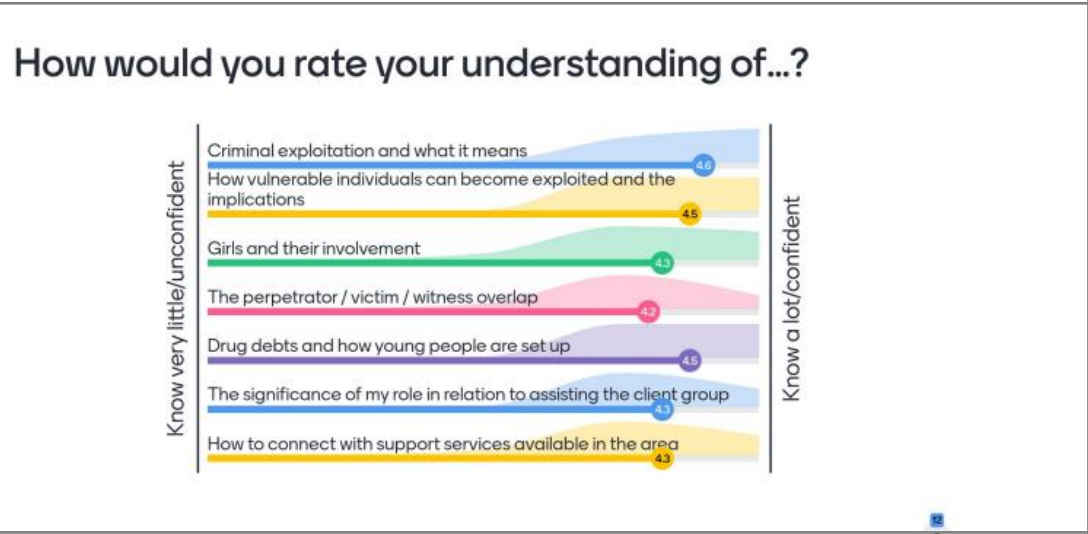
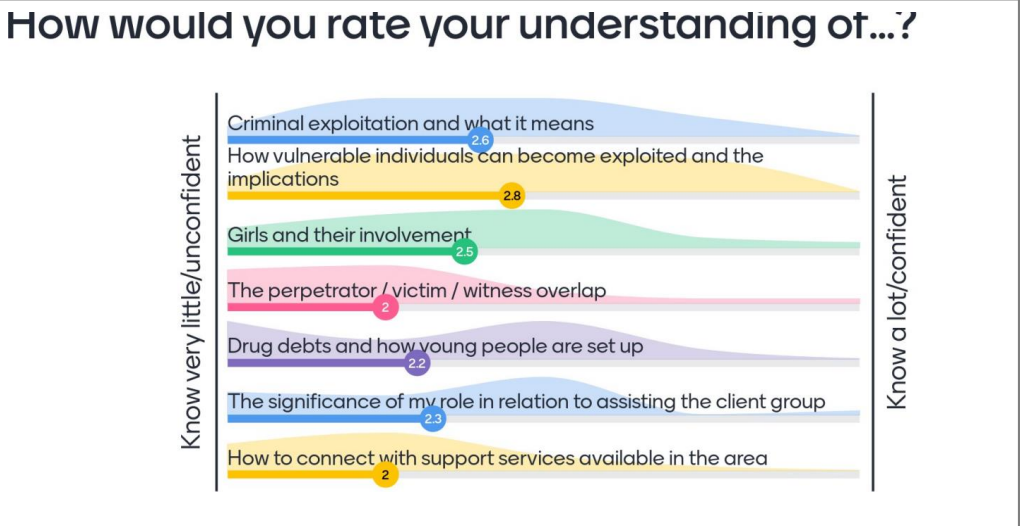
- ## 2 Sessions held in Q1 and Q2 2022/23

  - Foster Carers, Adoptive Parents, Special Guardians and Partners – 18 attendees
  - Adult and Community services – 30 attendees

### Foster Carers, SGO's:



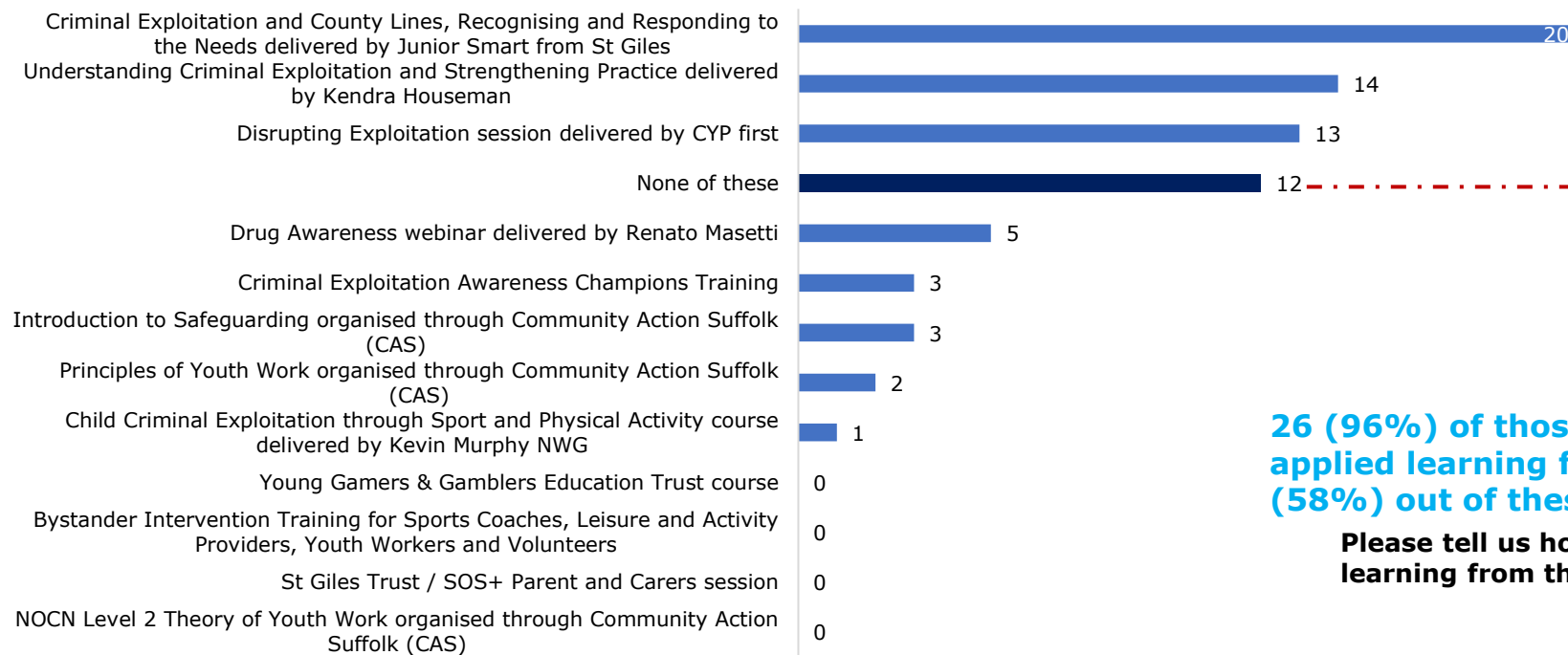
### Adult and Community services:





The SODA survey in September asked respondents if they had attended any of the CE Programme training events – 27 out of 39 had attended at least one of the courses. Of the 12 that had not, 8 were unaware of the training opportunities.

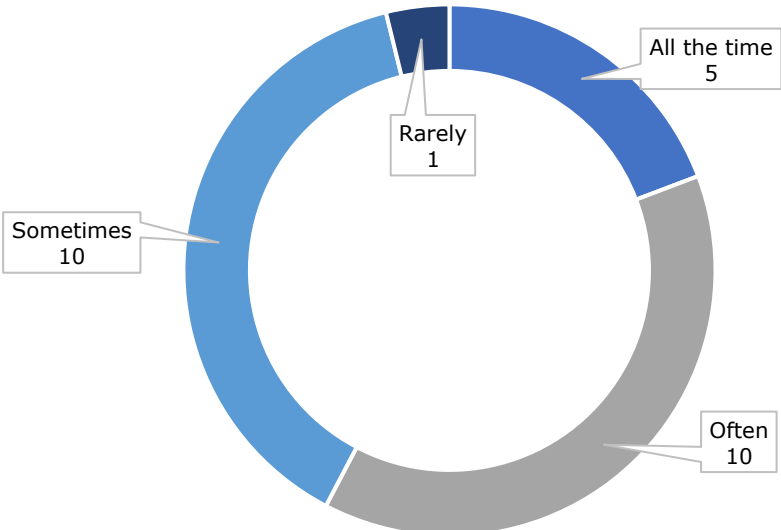
**Have you attended any of the following CE Programme training courses?**  
(Count 'Yes')



Why have you not attended any of these courses?	
None are relevant to my role / work	2
I was not aware of these training opportunities	8
Other reason – New to role	2

26 (96%) of those that attended any of the courses said they applied learning from the course(s) to their work. And 15 (58%) out of these say they apply learning often / all the time.

**Please tell us how frequently you have applied learning from the course(s) to your work.**



# Examples of how respondents had applied learning to their work

I found principles of youth work / detached youth work training delivered by CAS to be very useful. It helped me to understand the importance of meeting YPs in their own environments and seeking to identify how I can take an active interest in their own activities and interests. I also attended the CL presentation delivered by St Giles whilst working at my previous employer, Suffolk New College. This training is still resonating as it identified a clear grooming line and the risks of exploitation that I can still use within this role to date. This is knowledge that I knew prior, but it was reaffirmed and delivered in a different capacity to what I had been open to previously within policing.
By attending the work shops, i have learnt knowledge that guides my learning. For example using slang from the junior smart training to help me identify and understand what young people say.
Having these courses and more awareness what to look out for , my approach in my work, my understanding of different subjects has enabled me to then pass on information needed for safeguarding a YP to intel and caseworkers
disruption methods, learning the language, so you can recognise it when used. Helps us to understand what is going on. To know what to ask. Understanding the stages of exploitation and how it affects groups differently.
Use of co-working to make sure all parties are aware of possible exploitation. Understanding of powers available to other agencies to disrupt exploitation and how I can support this.
Having a greater understanding of the current and up to date exploitation issues affecting children and young people helps me in my work in the safeguarding partnership generally.
Mainly in discussion raising awareness to situations which may be exploitive or thinking of ways to reduce risk.
Having more of an awareness of exploitation and being able to make young people more aware of the dangerous and risky situations that they could be putting themselves in. Most recently a young female who had disclosed that she has had been sexually assaulted and the lead up to the incident/s
I found the word dictionary very interesting and insightful. Which will assist when engaging with pottential CSE victim's. Also going through the definition of CSE and how we explain this to young people of which I plan to use going forward, along with recognising the 4 CSE Models.
In the development of the CE hubs and the practice within my team we can draw on the the learning to help support our approach and practice. It has also helped guidance practice when talking and supporting other practitioners/social workers to help consider what they need to think about when supporting a child/parent who is being or at risk of CE
Both training sessions helped myself and the rest of the team understand the possible mindsets of the young people we work with, which in turn influences how we communicate with them in order to try and gain some trust and help build relationships. But it also helped us look at different ways in which to target our disruption and build a bigger intelligence picture. We understand and appreciate more that the young people possibly being affected by exploitation may not speak with police and if they do, may not report the whole story due to a number of reasons, including fear etc. So we look to other ways in which to try and gain information rather than assuming there is nothing to find just because the child or young person do not report anything directly to us.
Applied some of the scenario's that Kendra Houseman was in to children that I oversee to establish any similiarities or characteristics
Sitting in a practice development role. I work with practice leads to embed best practice across the service. I sit on the contextual safeguarding implementation group and also attended training on disruption. Having previously worked within the SAGE team disruption has been a key example of how external controls can be put in place to support a child that is being criminally exploited. I continue to ensure that people are looking at the whole picture when it comes to CE, to discuss concerns with other professionals and the police and access CE resources now available to us.
Refreshed my knowledge on county lines. I was able to provide an update to my team from this training.
The ways of talking to and listening to young people



# Examples of how respondents had applied learning to their work

I lead on safeguarding for the council and bring the wider learning into this space for all directorates in the council, I deliver and utilise the training for county lines awareness sessions also. being the voice of curiosity and helping others when developing policy in the council to better reflect the modern-day challenges, standardising language and understanding when speaking about exploitation and contextualised safeguarding. as a locality lead also empowering communities to understand the challenges of addressing exploitation, but also how they can play a part in the public health approach
Working together as a team to disrupt criminal exploitation. Giving me a wider vision with regards to the techniques we can use with regards to exploitation. Understanding of the children.
Appropriate language to use and what to avoid when working with young person's potentially being exploited through criminality. The importance of working with partners and listening to the PV.
Listening to the young person's story and not pretending to understand.
working with local agencies to develop their understanding of a contextual approach to safeguarding
I have included some of the learning to my training package for front line Firefighters I have also used this Nationally to update colleagues as they are looking at training for Fire and Rescue staff
learning has made my outputs in presentation materials more current and relevant
I have applied knowledge learnt to offer examples for actions that could be considered during Complex Strategy Meetings, Strategy discussions with MASH and MACE Panel
Grooming Line and Exploitation risks - This is now something I use to help identify what stage YPs I work with are at or the growing concerns for some of them also.
recognising signs where a YP may be involved in criminal activity
Makes me more responsive and better able to help the yp I work with
Giving a young person knowledge of a dangerous place where they should try and avoid
Kendra H - Being more aware of the different models, language and stepping back and considering it from the child's view.
Better safety plan
Recognising Adultification - seeing the YP as a child
sharing the knowledge has allowed other Fire Services to adjust training delivered
Make the difference to speak to someone who has some idea of what they are involved in and how it works.
Partnership working with a school to alert them of the dangerous situation a young person was exposing themselves to and using the school as additional support
Disruption training - continually reflect and hold the perpetrator's to mind, how we work wit victims, perpetrator and context/location when wanting to safeguard - useful for MACE, complex strategy meetings and any professional meetings

# One Cop Stop – South July 2022

South	Secondary School						Primary School					
	Inputs	Student engagement					Inputs	Student engagement				
County Lines	0	0	0	0	0		2	0	0	54	54	
Healthy Relationships	2	450	0	0	450		0	0	0	0	0	
Knife Crime	0	0	0	0	0		1	0	0	31	31	
Internet Safety	0	0	0	0	0		13	112	168	178	458	
Other	4	65	0	0	65		3	62	0	34	96	
	6	515	0	0	515		19	0	168	297	639	

## CYP16+

	South					
	Input	Student Engagement				
Consent	0	0	0	0	0	0
County Lines/ Exploit'n	1	0	12	0	0	12
Digital Footprint	0	0	0	0	0	0
Domestic Abuse	1	150	0	0	0	150
Drugs	0	0	0	0	0	0
Hate Crime	0	0	0	0	0	0
Knife Crime	0	0	0	0	0	0
Sexting & Revenge Porn	1	0	0	11	11	11
Other (inc Mini Police)	1	0	0	13	13	13
	0	0	12	24	186	

## Raedwald Trust PRU's

South	Raedwald Trust (Alternative Provsion)					
	Inputs	Student engagement				
County Lines	5	1	2	4	7	
Healthy Relationships	1	1	0	0	1	
Knife Crime	5	1	2	4	7	
Internet Safety	5	1	2	4	7	
Other- Drugs & Hate	1	1	0	0	1	
	17	5	6	12	23	

# One Cop Stop – South August 2022

South	Secondary School						Primary School				
	Inputs	Student engagement					Inputs	Student engagement			
County Lines	0	0	0	0	0		0	0	0	0	
Healthy Relationships	0	0	0	0	0		0	0	0	0	
Knife Crime	0	0	0	0	0		0	0	0	0	
Internet Safety	0	0	0	0	0		0	0	0	0	
Other	0	0	0	0	0		0	0	0	0	
	0	0	0	0	0		0	0	0	0	

## CYP16+

	South				
	Input	Student Engagement			
Consent	0	0	0	0	0
County Lines	0	0	0	0	0
Digital Footprint	0	0	0	0	0
Domestic Abuse	0	0	0	0	0
Drugs	0	0	0	0	0
Hate Crime	0	0	0	0	0
Knife Crime	0	0	0	0	0
Sexting & Revenge Porn	0	0	0	0	0
Other (inc Mini Police)	3	0	0	58	58
	0	0	0	58	58

## Raedwald Trust PRU's

South	Raedwald Trust (Alternative Provsn)					
	Inputs	Student engagement				
County Lines	0	0	0	0	0	
Healthy Relationships	0	0	0	0	0	
Knife Crime	0	0	0	0	0	
Internet Safety	0	0	0	0	0	
Other- Drugs & Hate	0	0	0	0	0	
	0	0	0	0	0	

# One Cop Stop – South September 2022

South	Secondary School							Primary School					
	Inputs	Student engagement						Inputs	Student engagement				
County Lines	2	400	0	0	0	400		0	0	0	0	0	
Healthy Relationships	6	1860	0	0	0	1860		0	0	0	0	0	
Knife Crime	0	0	0	0	0	0		1	0	0	90	90	
Internet Safety	3	650	0	0	0	650		3	0	29	53	82	
Other	1	307	0	0	0	307		1	0	0	35	35	
	12	3217	0	0	0	3217		5	0	29	178	207	

## CYP16+

	South					
	Input	Student Engagement				
Consent	0	0	0	0	0	0
County Lines	0	0	0	0	0	0
Digital Footprint	0	0	0	0	0	0
Domestic Abuse	0	0	0	0	0	0
Drugs	0	0	0	0	0	0
Hate Crime	0	0	0	0	0	0
Knife Crime	0	0	0	0	0	0
Sexting & Revenge Porn	0	0	0	0	0	0
Other (inc Mini Police)	11	386	0	0	0	386
	11	386	0	0	0	386

## Raedwald Trust PRU's

South	Raedwald Trust (Alternative Provsion)					
	Inputs	Student engagement				
County Lines	4	3	4	0	7	
Healthy Relationships	0	0	0	0	0	
Knife Crime	1	0	1	0	1	
Internet Safety	2	0	3	0	3	
Other- Drugs & Hate	1	3	0	0	3	
	8	6	8	0	14	

# One Cop Stop – East July 2022

East	Secondary School						Primary School				
	Inputs	Student engagement					Inputs	Student engagement			
County Lines	1	0	200	0	0		0	0	0	0	0
Healthy Relationships	0	0	0	0	0		0	0	0	0	0
Knife Crime	0	0	0	0	0		0	0	0	0	0
Internet Safety	0	0	0	0	0		1	100	0	0	100
Other	0	0	0	0	0		5	240	0	365	605
		0	200	0	0		6	340	0	365	705

## CYP16+

East					
Input	Student Engagement				
0	0	0	0	0	0
0	0	0	0	0	0
0	0	0	0	0	0
0	0	0	0	0	0
1	15	0	0	0	15
0	0	0	0	0	0
0	0	0	0	0	0
0	0	0	0	0	0
1	30	0	0	0	30
0	45	0	0	0	45

# One Cop Stop – East August 2022

East	Secondary School						Primary School				
	Inputs	Student engagement					Inputs	Student engagement			
County Lines	0	0	0	0	0		0	0	0	0	0
Healthy Relationships	0	0	0	0	0		0	0	0	0	0
Knife Crime	0	0	0	0	0		0	0	0	0	0
Internet Safety	0	0	0	0	0		0	0	0	0	0
Other	0	0	0	0	0		0	0	0	0	0
		0	0	0	0		0	0	0	0	0

CYP16+

East					
Input	Student Engagement				
0	0	0	0	0	0
0	0	0	0	0	0
0	0	0	0	0	0
2	35	0	0	0	35
0	0	0	0	0	0
2	40	0	0	0	40
0	0	0	0	0	0
0	0	0	0	0	0
0	0	0	0	0	0
0	0	0	0	0	0
0	75	0	0	0	75

# One Cop Stop – East September 2022

East	Secondary School					Primary School				
	Inputs	Student engagement				Inputs	Student engagement			
County Lines	1	0	0	50	50	1	18	0	0	18
Healthy Relationships	0	0	0	0	0	1	200	0	0	200
Knife Crime	0	0	0	0	0	0	0	0	0	0
Internet Safety	0	0	0	0	0	4	250	0	0	250
Other	1	600	0	0	600	2	840	0	205	1045
	2	0	0	50	650	8	1308	0	205	1513

## CYP16+

East					
Input	Student Engagement				
0	0	0	0	0	0
0	0	0	0	0	0
2	45	0	0	0	45
0	0	0	0	0	0
1	60	0	0	0	60
1	50	0	0	0	50
0	0	0	0	0	0
0	0	0	0	0	0
3	950	30	0	0	980
7	1105	30	0	0	1135

# One Cop Stop – West July 2022

WEST	Primary School						WEST	Secondary School					
	Inputs	Student engagement						Inputs	Student engagement				
County Lines	0	0	0	0	0		County Lines	0	0	0	0	0	
Healthy Relationships	1	0	55	0	55		Healthy Relationship	4	0	630	0	630	
Knife Crime	0	0	0	0	0		Knife Crime	0	0	0	0	0	
Internet Safety	2	0	0	110	110		Internet Safety	2	0	230	0	230	
Other	6	0	89	174	263		Other	4	0	0	150	150	
	9	0	144	284				10	0	860	150		

## CYP16+

	16 +				
	Input	Student Engagement			
Consent	0	0	0	0	0
County Lines	0	0	0	0	0
Digital Footprint	0	0	0	8	8
Domestic Abuse	0	0	0	0	0
Drugs	0	0	0	0	0
Hate Crime	0	0	0	8	8
Knife Crime	0	0	0	0	0
Sexting & Revenge Porn	0	0	0	0	0
Other	0	0	0	30	30
	0	0	0	46	46



# One Cop Stop – West August 2022

West	Secondary School						Primary School				
	Inputs	Student engagement					Inputs	Student engagement			
County Lines	0	0	0	0	0		0	0	0	0	0
Healthy Relationships	0	0	0	0	0		0	0	0	0	0
Knife Crime	0	0	0	0	0		0	0	0	0	0
Internet Safety	0	0	0	0	0		0	0	0	0	0
Other	0	0	0	0	0		0	0	0	0	0
	0	0	0	0	0		0	0	0	0	0

CYP16+

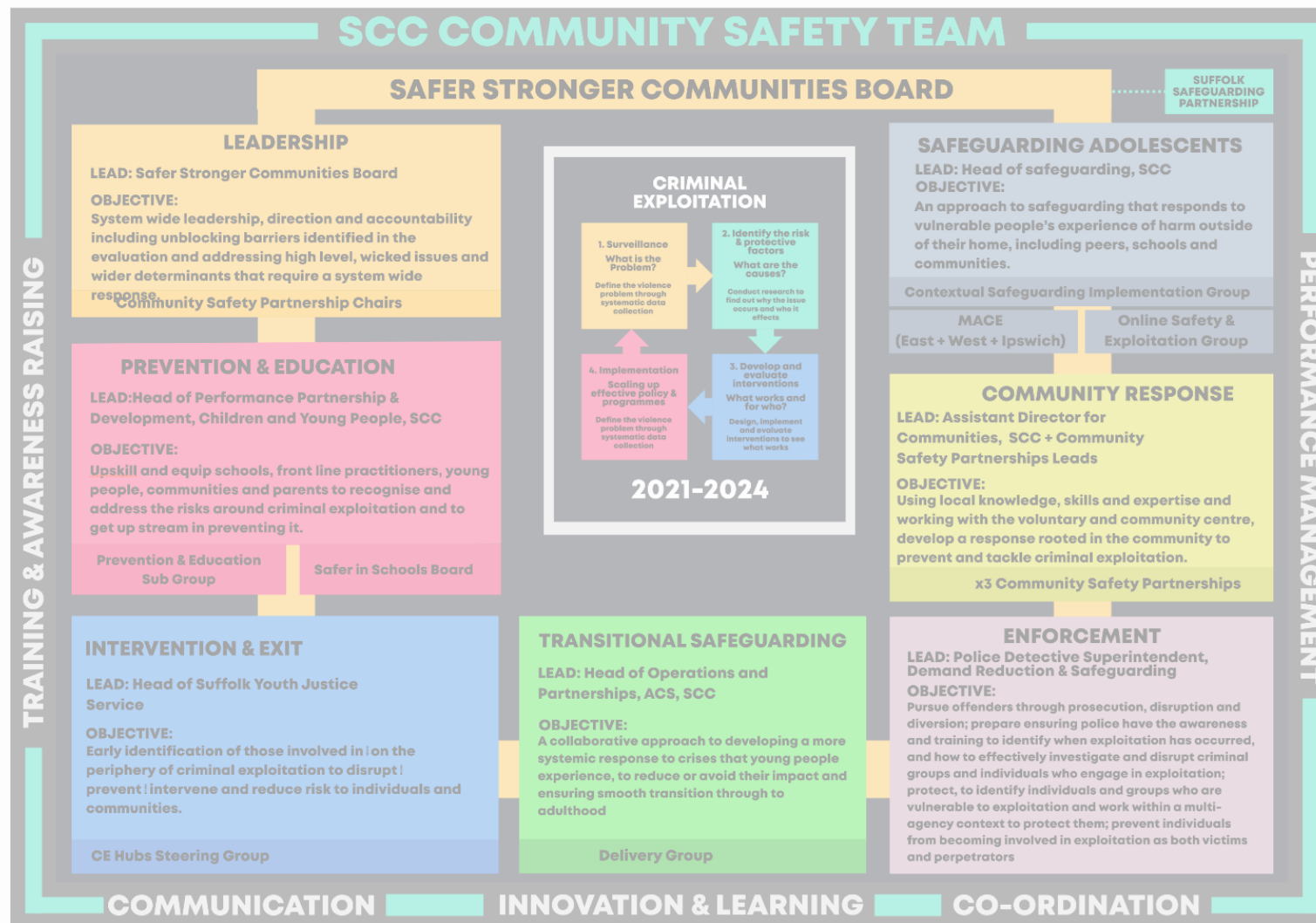
West				
Input	Student Engagement			
0	0	0	0	0
0	0	0	0	0
0	0	0	0	0
0	0	0	0	0
0	0	0	0	0
0	0	0	0	0
0	0	0	0	0
0	0	0	0	0
0	0	0	0	0
0	0	0	0	0

# One Cop Stop – West September 2022

West	Secondary School					Primary School				
	Inputs	Student engagement				Inputs	Student engagement			
County Lines	0	0	0	0	0	0	0	0	0	0
Healthy Relationships	0	0	0	0	0	2	0	0	56	56
Knife Crime	0	0	0	0	0	0	0	0	0	0
Internet Safety	1	0	1	0	1	2	0	0	0	0
Other	8	0	650	1	652	0	0	0	0	0
	9	0	651	1	653	4	0	0	56	56

## CYP16+

West					
Input	Student Engagement				
0	0	0	0	0	0
0	0	0	0	0	0
0	0	0	0	0	0
0	0	0	0	0	0
0	0	0	0	0	0
0	0	0	0	0	0
0	0	0	0	0	0
0	0	0	0	0	0
2	430	0	0	0	430
2	430	0	0	0	430



Activities	Measure	Q1 & Q2 2022/23 Activity Update
Develop and implement a criminal exploitation vulnerability tracker 1. Secure SODA expertise and capacity 2. Develop DPIA/ISA 3. Establish operational procedures	Working group developed for the CEVT 2. DPIA complete 3. VAT operational and use	<ul style="list-style-type: none"> <li>Members of MACE joined the police peer review in June 2022. Awaiting the evaluation from the day.</li> <li>As we continue to develop the structure of the MACE, membership has been tweaked and we are looking to have standing SM's attend each meeting around the county.</li> <li>Also looking for sw's to attend on open cases as the identified actions are not always being followed through.</li> <li>Request a "MACE marker" is added to each child subject to MAC. The record of engagement to be made into a LL form.</li> </ul>
Build in evaluation to CE work programme	CE work programme evaluated and the learning incorporated into future work	Yr 1 evaluation presented to SSCB
Contribute to ESF funding bid for additional resources.	Successful bid	<ul style="list-style-type: none"> <li>Education &amp; Prevention Steering Group became ASPIRE Project Steering Group as agreed by membership</li> <li>ASPIRE Project Delivery               <ul style="list-style-type: none"> <li>Next Steps programme during the summer in the West – 5 weeks for 1 day a week with 9 young people. Worked with YP on building confidence and resilience / socialising / self-esteem and transition to post 16 options. Out of the 9 young people 8 successfully started college in September.</li> <li>Music project in Ipswich during the summer – 6-week course 2 days week - working with South Street Studios and Brotherhood. Engaged YP in music helping them create their own lyrics and spending time in the studio making their own tracks. Providing them with a positive activity during the summer and helping with transition to post 16 options. 6 YP on the course, 4 successfully started college and Aspire will continue to support the other 2 into education, employment, and training.</li> <li>Multi-agency workshops delivered to year 10 students at County High school in July and Sybil Andrews school with year 11's in September. Workshops included – Terrance Higgins Trust Sexual health &amp; healthy relationships, Turning Point – Drugs &amp; Alcohol, Police – Exploitation, Cybercrime, debt bondage, CE hubs – safe places and spaces.</li> <li>6 weeks of targeted group work started in both schools where the school has identified a small group of year 11 students at risk of exploitation and at risk of becoming NEET.</li> </ul> </li> </ul>

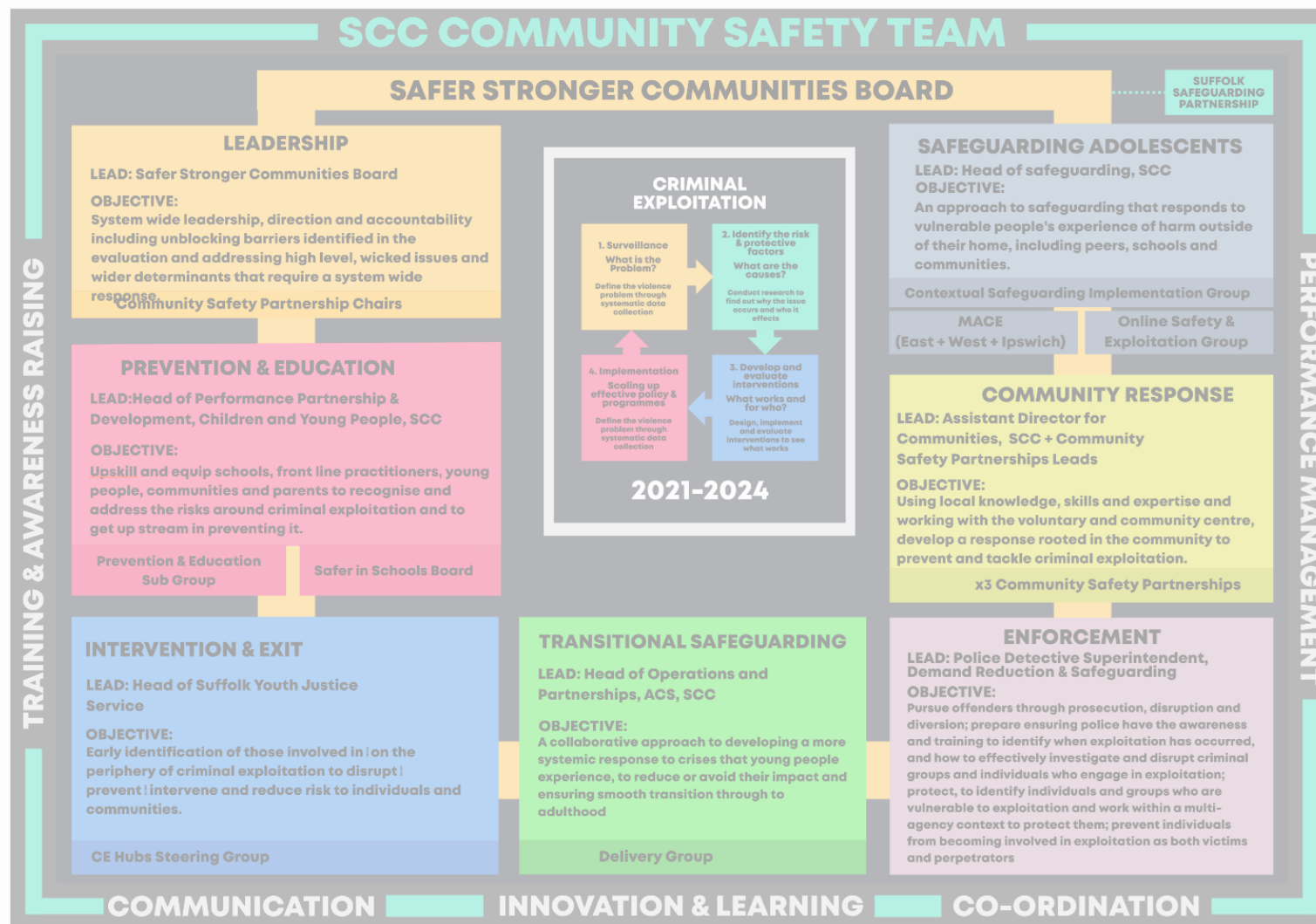
## INNOVATION & LEARNING

**LEAD: Regional Pathfinder Lead (Suffolk)**

### OBJECTIVE:

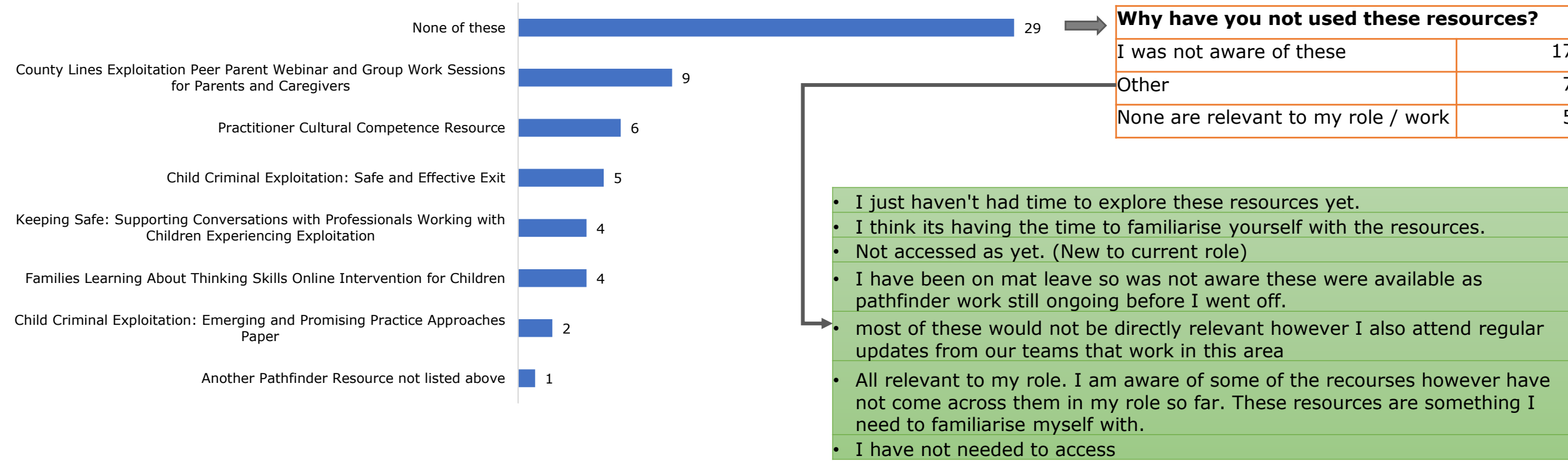
Working with neighbouring counties, learning and sharing best practice, innovation and research to test and identify what works, the best approach to tackle criminal exploitation.

**County Lines Pathfinder Board**



The Pathfinder Programme completed in March 2022 (see SODA Evaluation Report from June 2022). As part of the SODA survey in September, we wanted to understand awareness and usage of the Pathfinder Project outputs. It is clear that these need to be promoted more, as 17 out of the 39 respondents were unaware that these resources exist.

**Have you accessed any of the following information, guides, advice, videos, etc. developed through the County Lines Pathfinder project?**  
(Count 'Yes')



## Examples of how respondents have used Pathfinder Resources:

<ul style="list-style-type: none"><li>• I have been present during the parental webinar and support delivered by CE Hub and supported understanding for this also. I feel that by understanding the impact CE has upon the wider family can equally provide context to specific behaviours, whilst recognising that it is a larger problem that places these individuals at potential risk also.</li></ul>
<ul style="list-style-type: none"><li>• I have shared this with parents.</li></ul>
<ul style="list-style-type: none"><li>• Used with a colleague who assisted a parent. I worked as an interpreter.</li></ul>
<ul style="list-style-type: none"><li>• Used them to be up to date on what's happening locally and for ensuring that the Partnership is aware of what's happening locally in order to inform other organisations, particularly schools. These resources sit on our website.</li></ul>
<ul style="list-style-type: none"><li>• Allowing me to understand more the safeguarding concerns for young people beyond their home environment and the external factors that influence this</li></ul>
<ul style="list-style-type: none"><li>• These toolkits have been embedded into my team - delivered and regular review the Keep Safe document in team meetings. As part of my teams induction they all complete the CC toolkit and we refer back to this at team meeting using the videos to reflect on a different area of practice.</li><li>• Safety planning - is used to support safety planning is used with a child, parent or in consultation with another professional.</li><li>• My team have been using the peer parent webinar with parents and receiving positive feedback</li></ul>
<ul style="list-style-type: none"><li>• I spent time with a practitioner in utilising the cultural competency toolkit, this helped ensure the practitioner had a much better understanding of approach whilst putting in safety planning for a child that was a victim of criminal exploitation.</li><li>• We now have a direct link on our Suffolk Youth justice practitioners portal page to all the CS resources via the SharePoint link, making them even more accessible for our staff.</li><li>• We will also be putting on practice development sessions to further support the use of some of the pathfinder resources.</li></ul>
<ul style="list-style-type: none"><li>• Delivered two FLATS groups. Unsure if YP where ready to do CBT related learning (i.e. low level on trauma recovery model). Helping parents to not feel isolated (empowering them).</li></ul>
<ul style="list-style-type: none"><li>• For Suffolk I read, amended and signed off all of these as part of my role on pathfinder governance board.</li></ul>