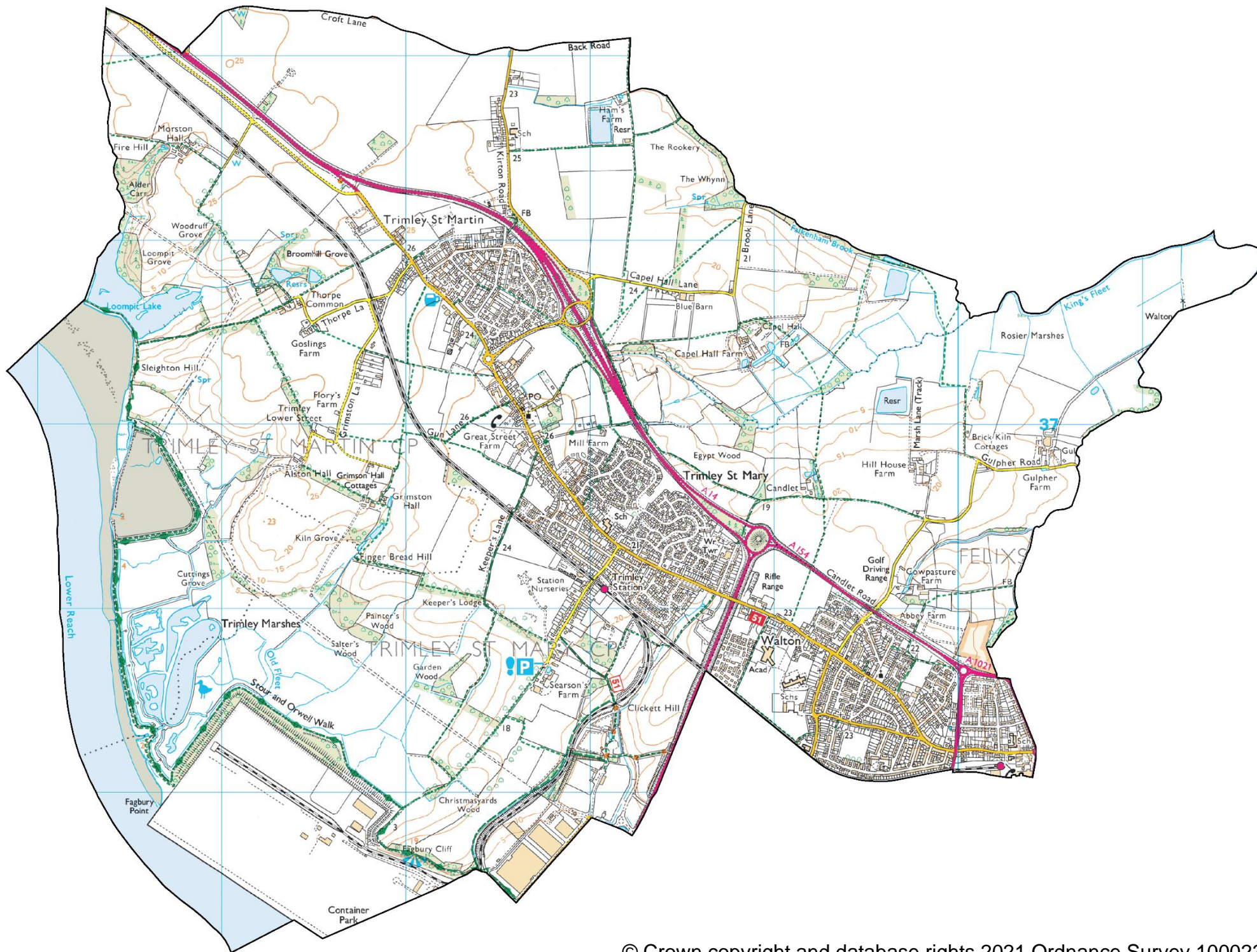


# FELIXSTOWE NORTH & TRIMLEY

## ELECTORAL DIVISION PROFILE 2021

This Division consists of parts of Orwell & Villages, Western Felixstowe and Eastern Felixstowe Wards

[www.suffolkobservatory.info](http://www.suffolkobservatory.info)



## **CONTENTS**

- Demographic Profile: Age & Ethnicity
- Economy and Labour Market
- Schools & NEET
- Index of Multiple Deprivation
- Health
- Crime & Community Safety
- Additional Information
- Data Sources

# ELECTORAL DIVISION PROFILES: AN INTRODUCTION

These profiles have been produced to support elected members, constituents and other interested parties in understanding the demographic, economic, social and educational profile of their neighbourhoods. We have used the latest data available at the time of publication.

Much more data is available from national and local sources than is captured here, but it is hoped that the profile will be a useful starting point for discussion, where local knowledge and experience can be used to flesh out and illuminate the information presented here.

The profile can be used to help look at some fundamental questions e.g.

- Does the age profile of the population match or differ from the national profile?
- Is there evidence of the ageing profile of the county in all the wards in the Division or just some?
- How diverse is the community in terms of ethnicity?
- What is the impact of deprivation on families and residents?
- Does there seem to be a link between deprivation and school performance?
- What is the breakdown of employment sectors in the area?
- Is it a relatively healthy area compared to the rest of the district or county?
- What sort of crime is prevalent in the community?

A vast amount of additional data is available on the **Suffolk Observatory**

**[www.suffolkobservatory.info](http://www.suffolkobservatory.info)**

The Suffolk Observatory is a free online resource that contains all Suffolk's vital statistics; it is the one-stop-shop for information and intelligence about Suffolk. Through data, reports and profiles, the Suffolk Observatory provides a comprehensive picture of the County. It is a great source for useful facts and figures that can be used for writing reports and presentations, informing strategic and business planning, preparing funding applications or supporting academic research. Data is presented around the key themes of education and skills, economy and employment, health and care, population, deprivation, housing, environment, transport and travel and crime. All areas of the county are covered, right down to district, ward and parish level, with information easily accessible in a variety of formats. You can also build your own reports by different themes and topics.

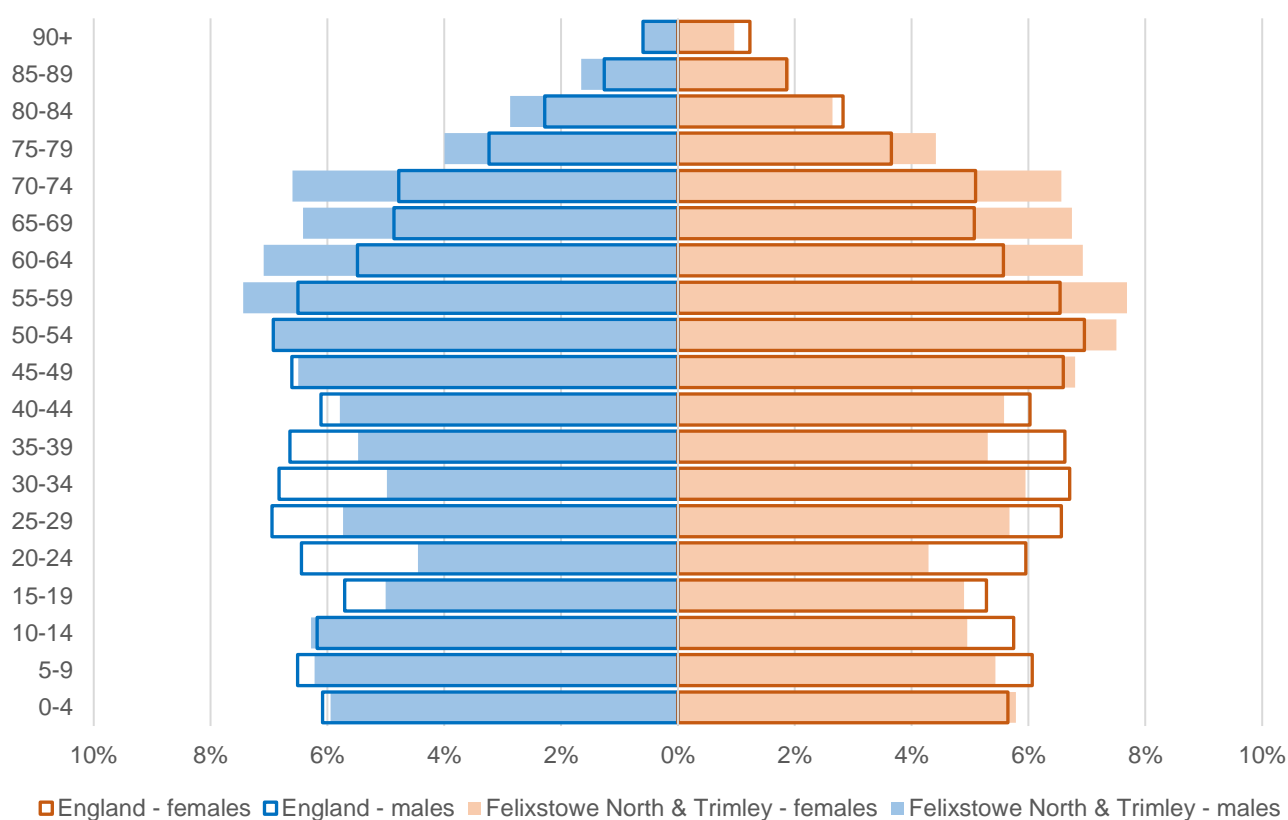
## **Technical Notes:**

1. Where Electoral Divisions do not exactly match ward boundaries, we have adopted a "best fit" approach to produce a dataset.
2. District, county and national level data is provided where possible to provide a context for comparisons.

## DEMOGRAPHIC PROFILE - AGE

In mid-2019, the population of Felixstowe North and Trimley stood at 10,490, an increase of 5.9% since the 2011 Census. The age structure of the division is set out below.

	Felixstowe North and Trimley Division	Orwell & Villages	Western Felixstowe	Eastern Felixstowe
<b>All Ages</b>	<b>10,490</b>	<b>5,977</b>	<b>3,968</b>	<b>545</b>
<b>0-4</b>	<b>615</b>	<b>358</b>	<b>230</b>	<b>27</b>
<b>5-9</b>	<b>610</b>	<b>335</b>	<b>246</b>	<b>29</b>
<b>10-14</b>	<b>587</b>	<b>313</b>	<b>248</b>	<b>26</b>
<b>15-19</b>	<b>519</b>	<b>260</b>	<b>241</b>	<b>18</b>
<b>20-24</b>	<b>458</b>	<b>251</b>	<b>196</b>	<b>11</b>
<b>25-29</b>	<b>598</b>	<b>334</b>	<b>246</b>	<b>18</b>
<b>30-34</b>	<b>575</b>	<b>328</b>	<b>229</b>	<b>18</b>
<b>35-39</b>	<b>565</b>	<b>339</b>	<b>203</b>	<b>23</b>
<b>40-44</b>	<b>596</b>	<b>334</b>	<b>240</b>	<b>22</b>
<b>45-49</b>	<b>698</b>	<b>393</b>	<b>272</b>	<b>33</b>
<b>50-54</b>	<b>759</b>	<b>427</b>	<b>298</b>	<b>34</b>
<b>55-59</b>	<b>794</b>	<b>485</b>	<b>272</b>	<b>37</b>
<b>60-64</b>	<b>735</b>	<b>463</b>	<b>234</b>	<b>38</b>
<b>65-69</b>	<b>691</b>	<b>432</b>	<b>208</b>	<b>51</b>
<b>70-74</b>	<b>690</b>	<b>403</b>	<b>231</b>	<b>56</b>
<b>75-79</b>	<b>442</b>	<b>238</b>	<b>159</b>	<b>45</b>
<b>80-84</b>	<b>289</b>	<b>151</b>	<b>108</b>	<b>30</b>
<b>85-89</b>	<b>187</b>	<b>98</b>	<b>68</b>	<b>21</b>
<b>90+</b>	<b>82</b>	<b>35</b>	<b>39</b>	<b>8</b>

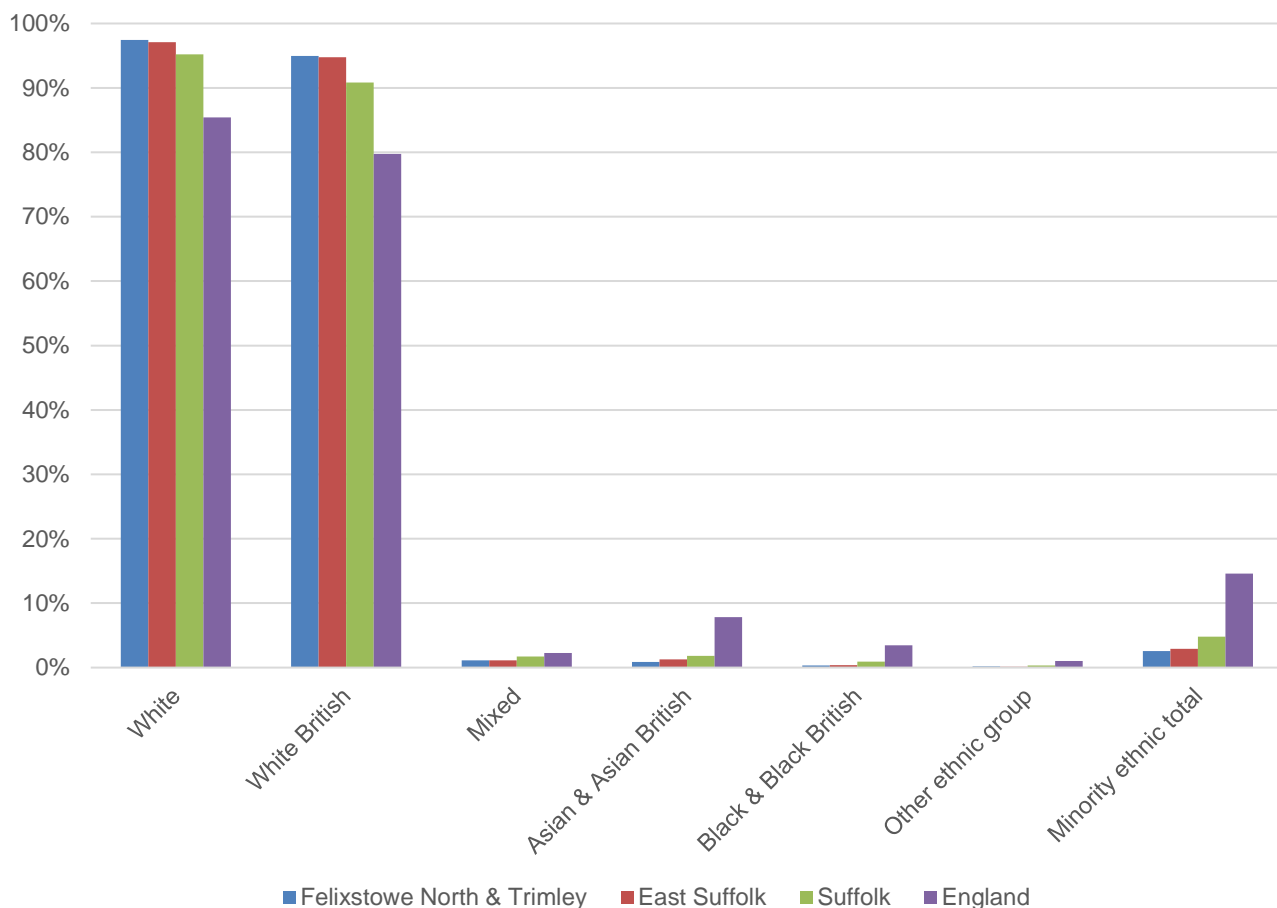


- The age pyramid for Felixstowe North and Trimley shows a higher-than-average proportion of people over the age of 50.



- The most common age group in Felixstowe North and Trimley is 55-59-year-olds, followed by 50-54-year-olds.
- There is a lower-than-average number of people in some of the younger age groups, particularly 20–39-year-olds.

## ETHNICITY

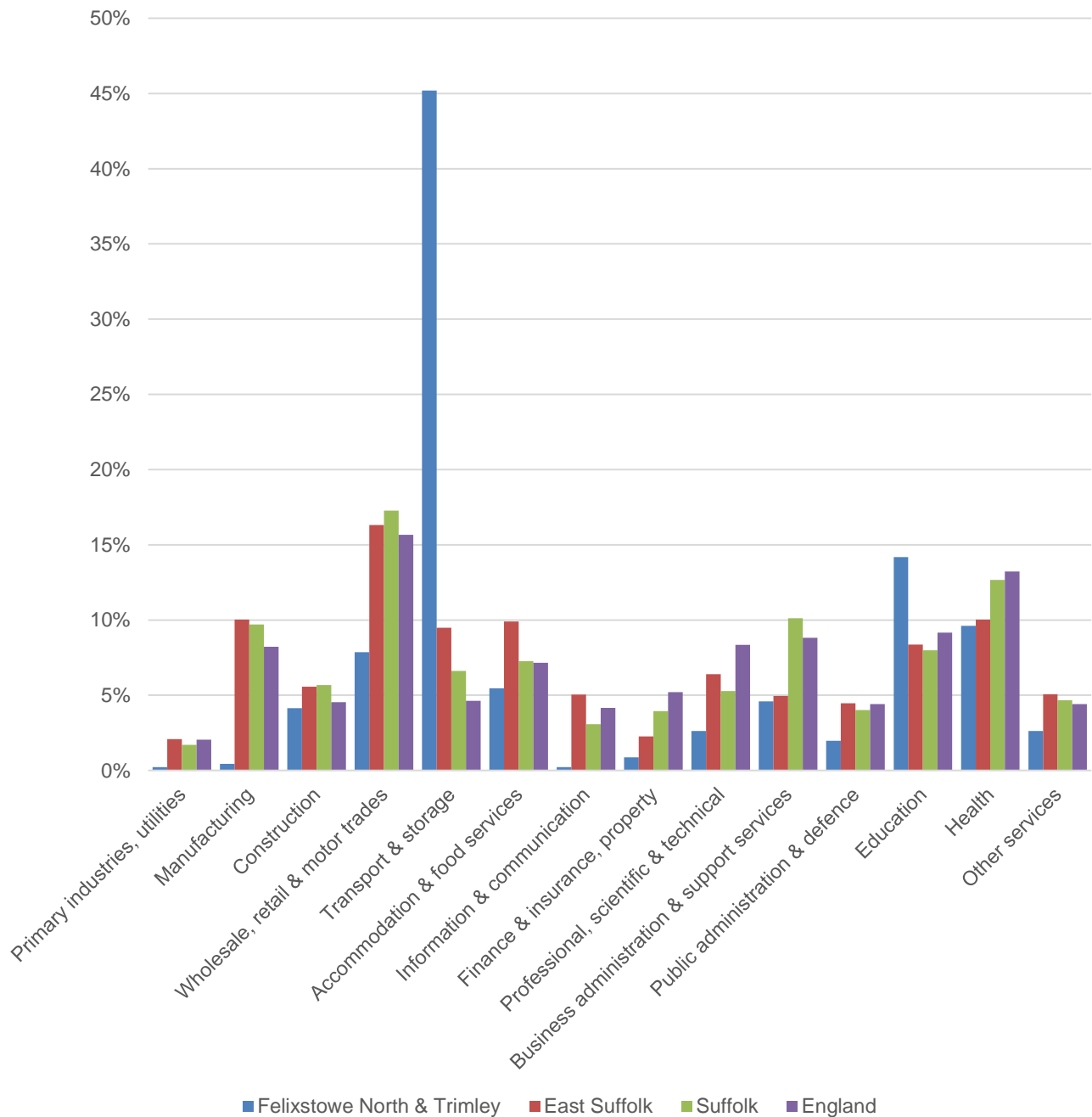


- According to the latest data (2011 Census), 97.5% (9,653) of the population of Felixstowe North and Trimley are white, with 95% white British.
- There are 252 (2.5%) people of minority ethnic origin in the division.
- Felixstowe North and Trimley has generally lower proportions of minority ethnic groups than Suffolk county, East Suffolk district and England as a whole.

	All people	White		White British		Mixed		Asian and Asian British		Black and Black British		Other Ethnic Group		Total minority ethnic population	
	Count	Count	%	Count	%	Count	%	Count	%	Count	%	Count	%	Count	%
Felixstowe North & Trimley	9,905	9,653	97.5	9,407	95.0	113	1.1	88	0.9	33	0.3	18	0.2	252	2.5
East Suffolk	239,552	232,565	97.1	227,040	94.8	2,728	1.1	2,991	1.2	925	0.4	343	0.1	6,987	2.9
Suffolk	728,163	693,195	95.2	661,458	90.8	12,472	1.7	13,131	1.8	6,854	0.9	2,511	0.3	34,968	4.8
England			85.4		79.8		2.3		7.8		3.5		1.0		14.6

# ECONOMY

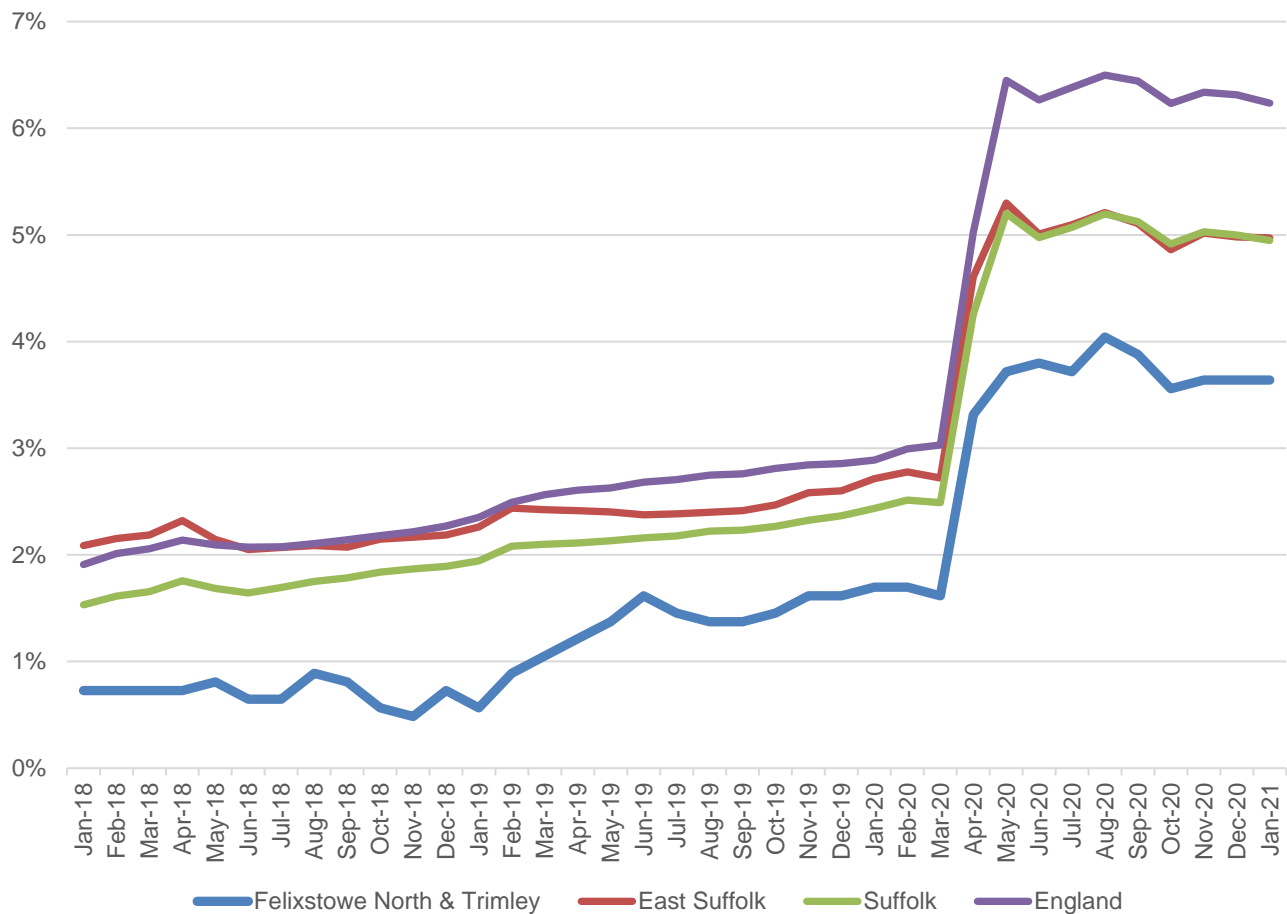
There are 2,300 people employed in Felixstowe North and Trimley.



- Transport and storage is the most important industry in the division by some margin. The sector includes logistics activity related to the Port of Felixstowe. The sector provides just over 45% of jobs in the division.
- Such is the dominance of transport and storage employment in the division that most other sectors account for below average proportions of employment.
- Education is the second most important sector in Felixstowe North and Trimley, providing 1 in 7 jobs in the division.

# LABOUR MARKET

## OUT-OF-WORK BENEFIT CLAIMANT RATE



- Felixstowe North and Trimley saw a sharp increase in claimants of out-of-work benefits in the first half of 2020 as a result of the COVID-19 pandemic, much like the rest of the county and England as a whole.
- Claimant unemployment levels in the division are consistently below those of the district, county and England as a whole.
- In percentage terms, approximately 3.6% of the working age population of Felixstowe North and Trimley are claiming out-of-work benefits in January 2021.



# SCHOOLS

## SCHOOL INFORMATION

### Schools in the Division

Name	Phase	Academy Status	Average cohort size at:				Latest Ofsted	Latest Ofsted Date
			Foundation Stage (age 5)	KS2 (age 11)	KS4 (age 16)	KS5 (age 18)		
Fairfield Infant School	Primary	LA	90				Good	12/07/2017
SET Causton	Primary	AC		49			Good	05/12/2018
SET Maidstone	Primary	AC	42				Good	13/03/2014
Trimley St Martin Primary School	Primary	LA	28	28			Good	04/12/2014
Trimley St Mary Primary School	Primary	LA	53	58			Good	28/01/2016
Felixstowe Academy	Secondary	AS			195	46	Inadequate	15/11/2017

### Schools with catchments that overlap with the Division

Name	Phase	Academy Status	Average cohort size at:				Latest Ofsted	Latest Ofsted Date
			Foundation Stage (age 5)	KS2 (age 11)	KS4 (age 16)	KS5 (age 18)		
Colneis Junior School	Primary	LA		87			Good	22/03/2017
Kingsfleet Primary School	Primary	LA	28	27			Good	07/03/2019

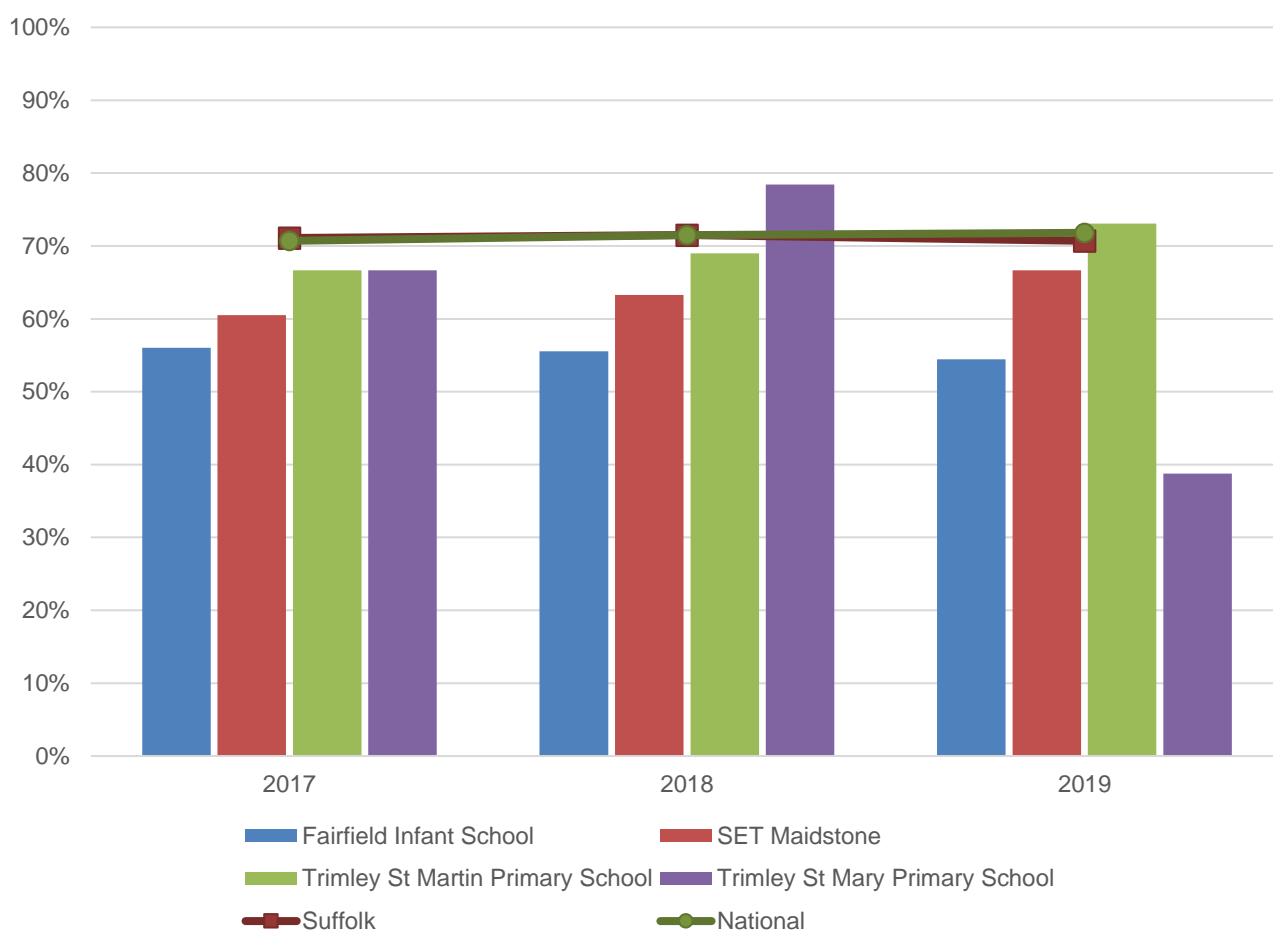
Academy Status key: AS = Academy Sponsored, AC = Academy Converter, LA = LA Maintained, F = Free

\*The latest full inspection judgement does not relate to the current school

# SCHOOL ATTAINMENT

## Foundation Stage Profile (reception)

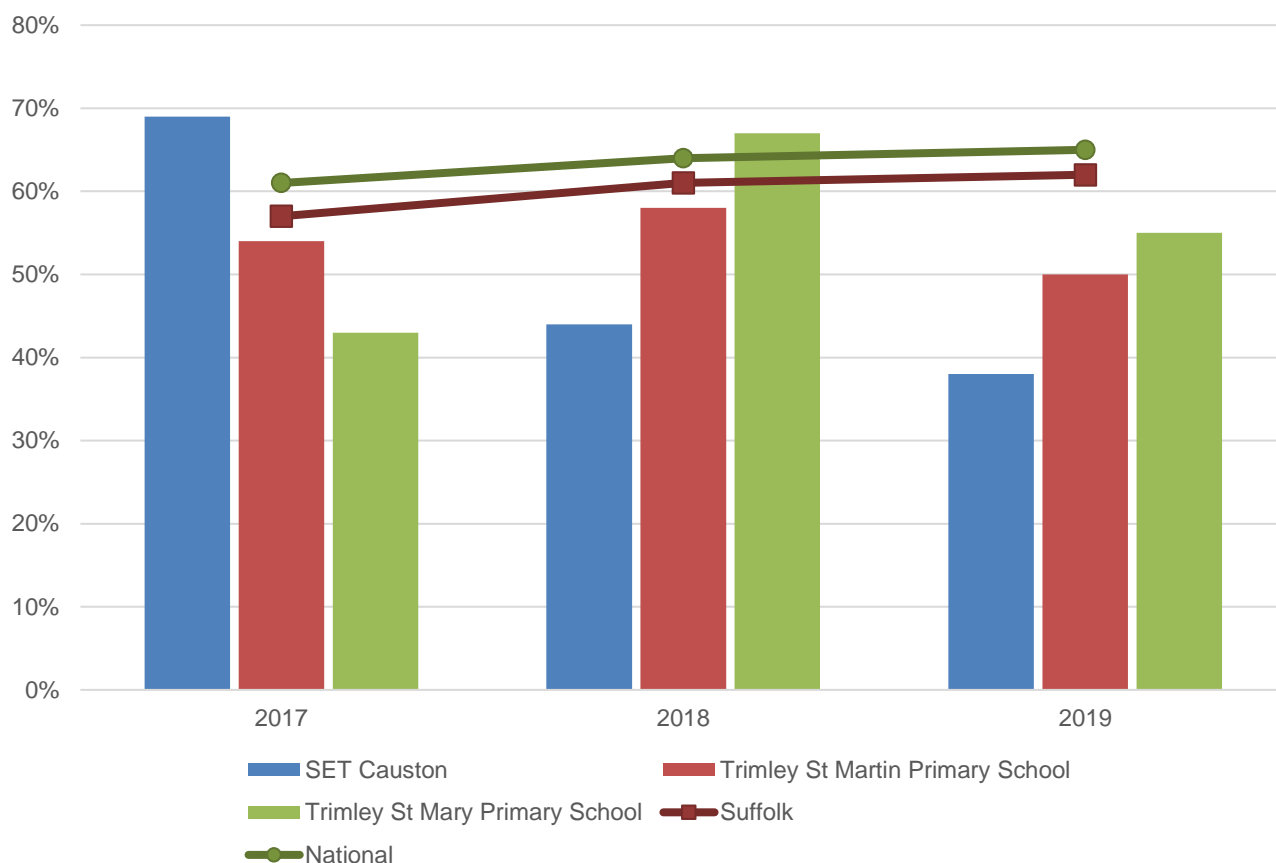
% pupils achieving Good Level of Development (GLD)



- Foundation stage attainment at schools in Felixstowe North and Trimley has been generally below average over the last three years of available data.
- Trimley St Mary Primary School (2018) and Trimley St Martin Primary School (2019) were the only occasions when schools in the division saw above average Foundation Stage attainment.
- Pupil attainment at Fairfield Infant School has seen a slight decline in attainment over the three years of data presented here, while SET Maidstone has seen the opposite trend.

## Key Stage 2 (age 11)

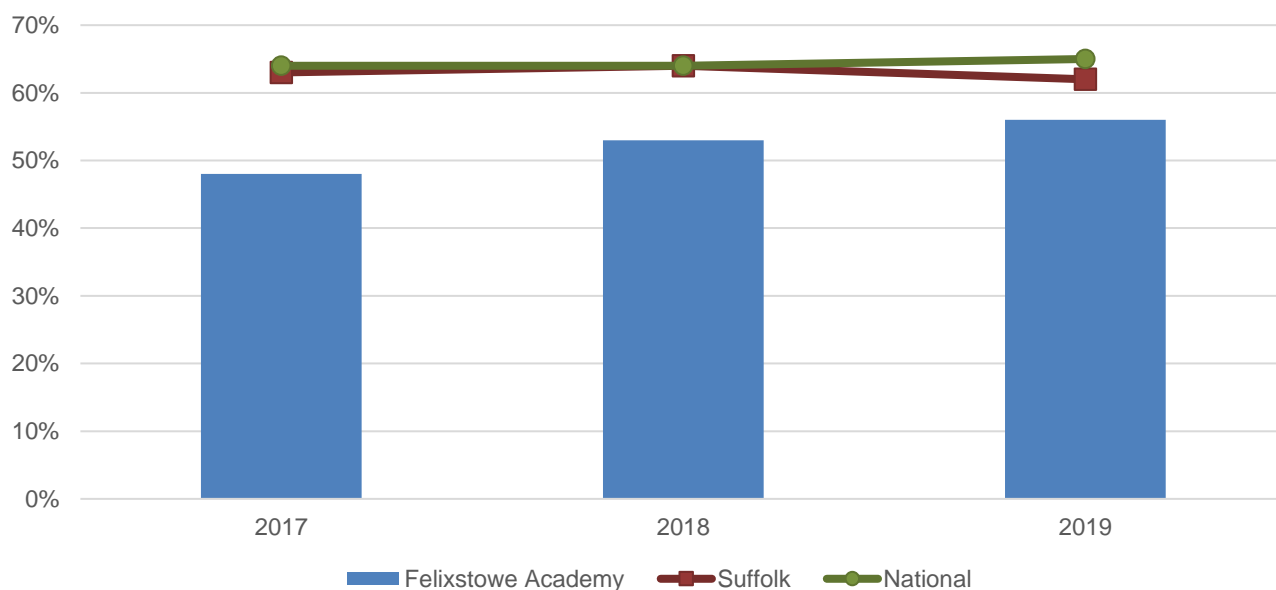
% pupils achieving the Expected Level or better in Reading, Writing and Mathematics



- Key Stage 2 attainment at schools in Felixstowe North and Trimley has been generally below average over the last three years of available data.
- SET Causton (2017) and Trimley St Mary Primary School (2018) were the only occasions when schools in the division saw above average KS2 attainment. Performance at SET Causton has declined in the two years since.
- Attainment at Trimley St Martin Primary School has been fairly stable but below the county and national benchmarks during this period.

### Key Stage 4 (GCSE) (age 16)

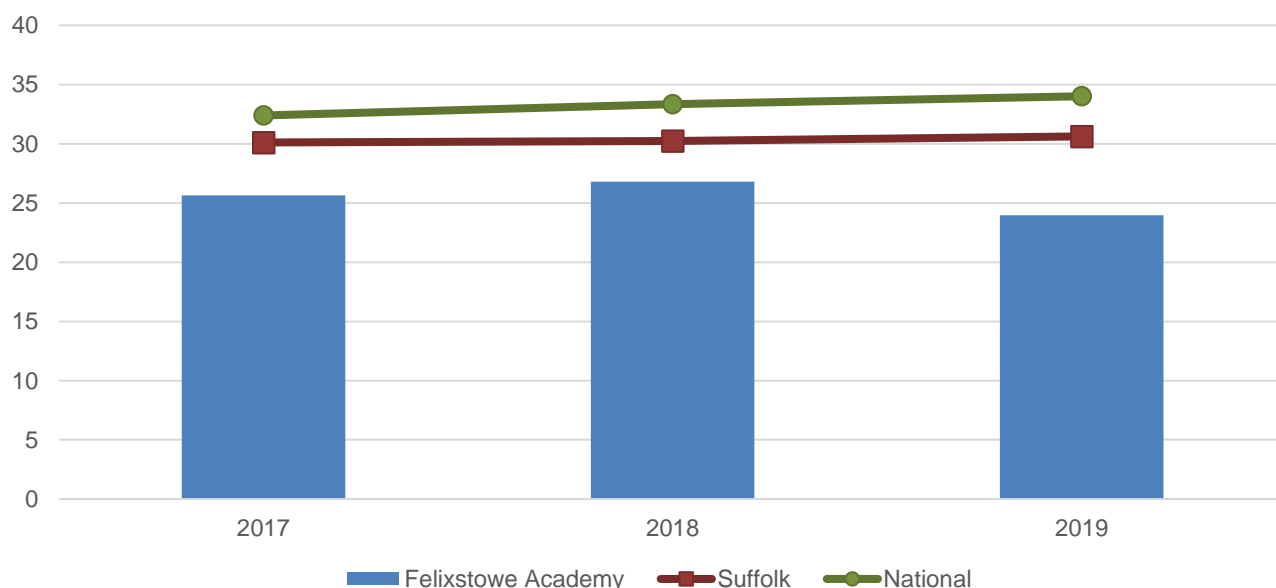
% pupils achieving level 4-9 in English and Mathematics



- GCSE attainment results Felixstowe Academy have been below the county and national averages from 2017 to 2019.
- However, pupil attainment at the school has improved in each of the last two years, with the gap to the national average down to 9 percentage points in 2019.

### Key Stage 5 (A level) (age 18)

A Level Points entry



- A Level attainment results at Felixstowe Academy have been consistently below average from 2017 to 2019.
- There was an improvement in attainment in 2018 but this was reversed in 2019.

## NEET % (NOT IN EDUCATION, EMPLOYMENT OR TRAINING)

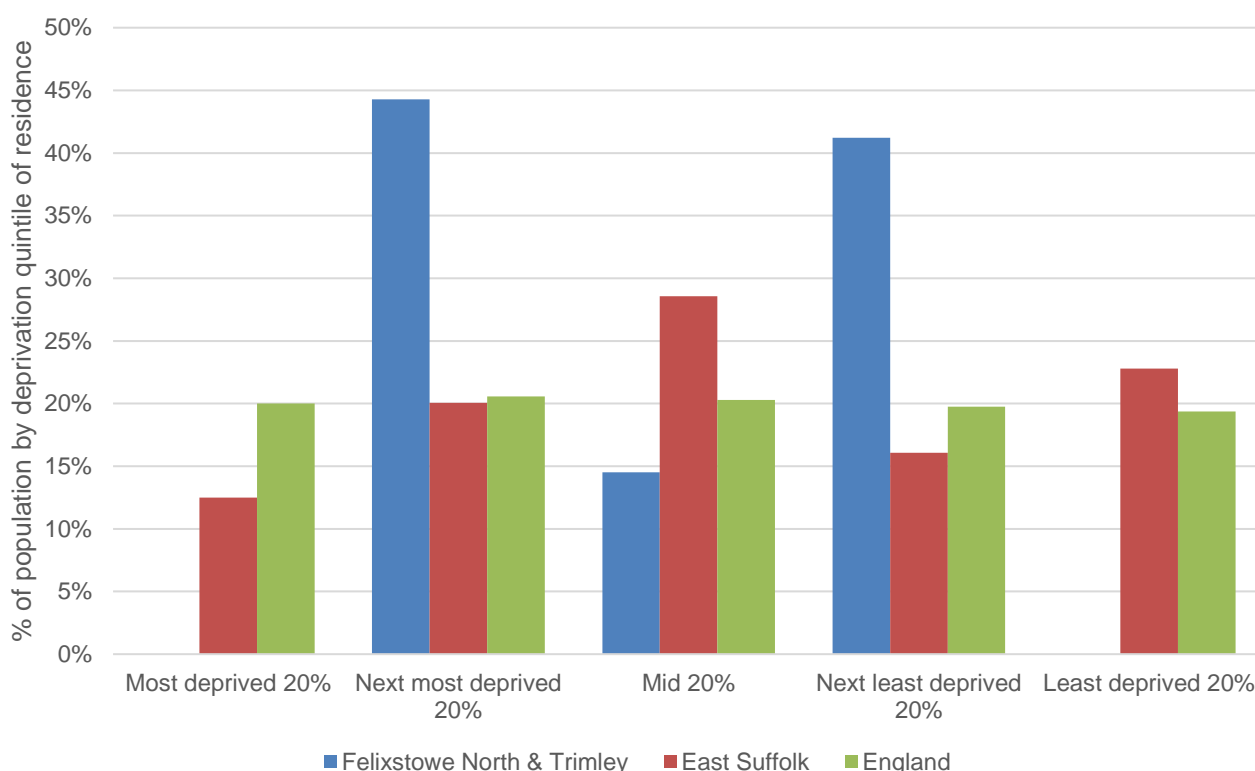


- In January 2021, 3.9% of 16–18-year-olds in Felixstowe North and Trimley were classified as NEET (where current activity is known).
- The NEET level in Felixstowe North and Trimley is currently below the Suffolk average but slightly above the East Suffolk rate. NEET figures in the division tend to be similar to the district and county averages.

## INDEX OF MULTIPLE DEPRIVATION (IMD) 2019 (SEE MAP OVERLEAF)

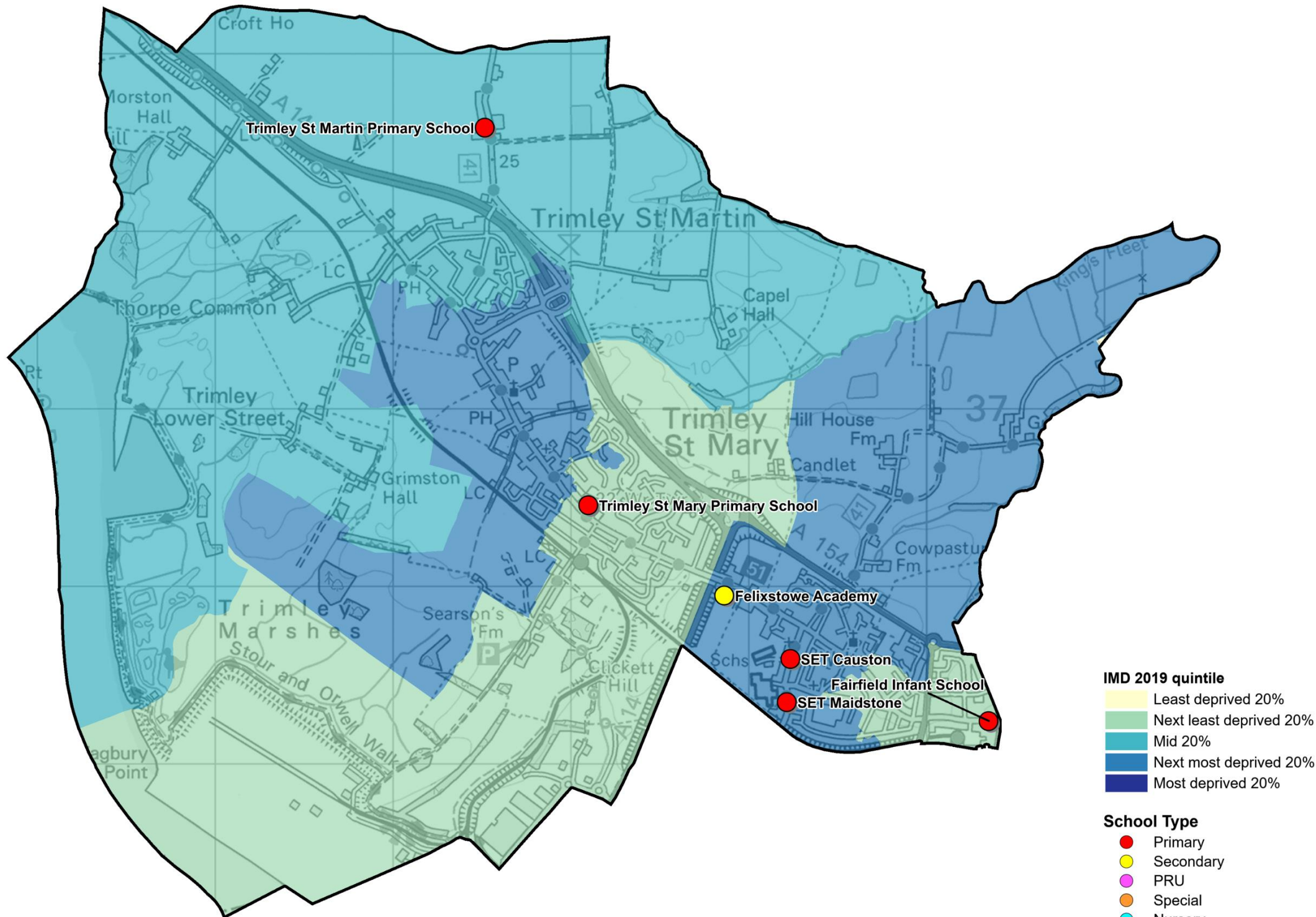
The IMD combines a number of indicators, chosen to cover a range of economic, social and housing issues, into a single deprivation score for each small area in England. This allows each area to be ranked relative to one another according to their level of deprivation. Small areas (Lower Super Output Areas, average population 1,700) are most commonly described as being in 1 of 5 quintile bands. The bottom quintile represents the 20% of areas that are the most deprived in England; these are shaded pale yellow on the map. The top quintile represents the least deprived areas in England and is shaded dark blue.

The Index is widely used to analyse patterns of deprivation, identify areas that would benefit from special initiatives or programmes and as a tool to determine eligibility for specific funding streams.



- The IMD 2019 shows that relative deprivation levels in Felixstowe North and Trimley are varied, with the division split across three of the five deprivation quintiles.
- Of the seven Lower Layer Super Output Areas (LSOA) comprising the division, three are ranked in the next least deprived quintile in England (home to 41% of the population of the division as shown in the chart above), one is in the mid quintile and three are in the second most deprived quintile.

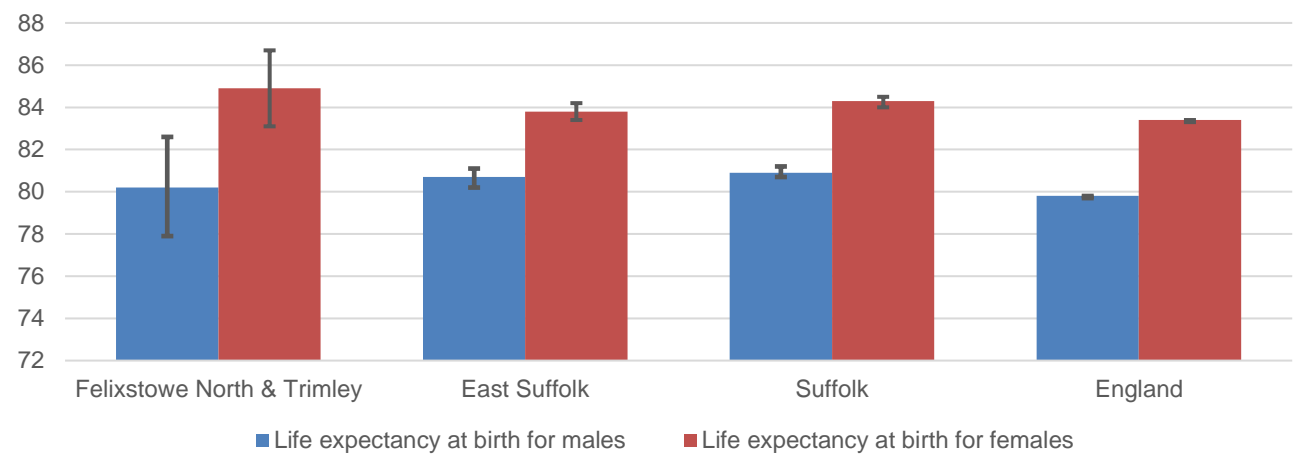




# HEALTH

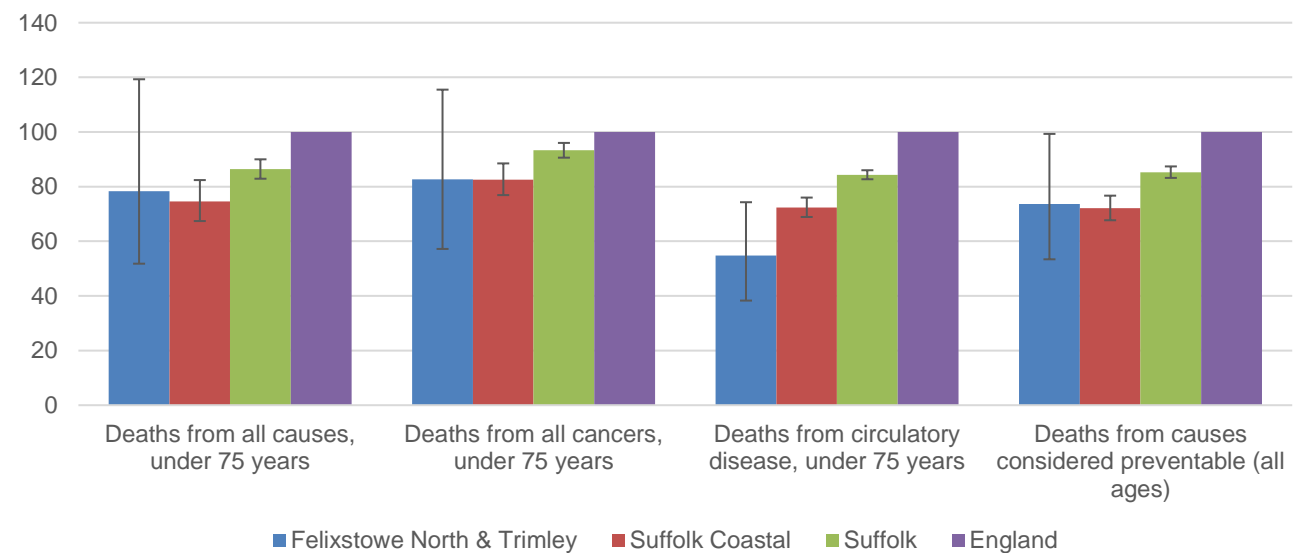
The local data used here is based on relatively small numbers of deaths. The confidence limits provide an indication of the reliability of the data. The 95% confidence intervals utilised on the chart provide a range within which there is 95% chance of the true result lying.

## LIFE EXPECTANCY AT BIRTH



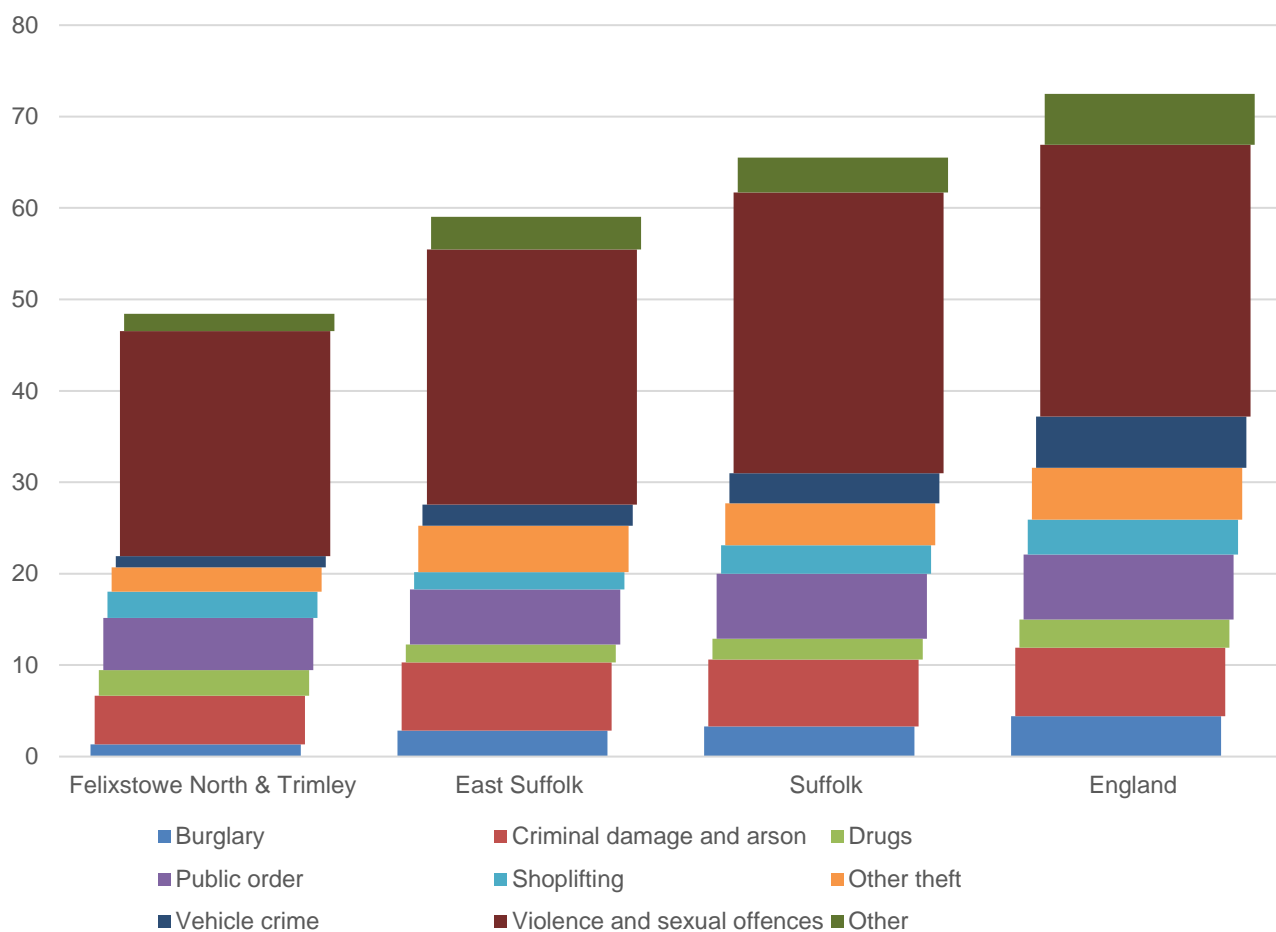
- Estimated life expectancy at birth in Felixstowe North and Trimley is above average for females, but slightly below the district and county average for males.
- For women in the division, life expectancy is 84.9 years, around 18 months longer than the national average.
- Life expectancy for men in Felixstowe North and Trimley is 80.2 years. This is slightly below the East Suffolk figure of 80.7 but above the England average of 79.8.

## DEATHS, UNDER 75 YEARS, STANDARDISED MORTALITY RATIO



- The estimated rate of early deaths for all causes, early deaths from cancer and deaths from causes considered preventable across all ages in Felixstowe North and Trimley are very slightly above the East Suffolk level but below the county and national average.
- The standardised mortality ratio data shown here means that for every 100 early deaths from all causes across England as a whole, there are an estimated 78 comparable deaths in Felixstowe North and Trimley.
- Early deaths from circulatory disease in the division are estimated to be very low.

## CRIME & COMMUNITY SAFETY



- Crime levels in Felixstowe North and Trimley are fairly low. 48 crimes per 1,000 residents were recorded in the division in the year to the end of January 2021, compared to 59 in East Suffolk and 66 countywide.
- Violence and sexual offences accounted for around half of recorded crime in the division during this period.
- Most crimes occur at a similar or lower rate in the division than across Suffolk as a whole. Drug offences are slightly more common in Felixstowe North and Trimley, with 2.8 crimes recorded per 1,000 residents compared to 2 across East Suffolk and 2.3 across the county.

## ADDITIONAL INFORMATION

### Parishes in Division

Felixstowe (part)  
Trimley St. Martin  
Trimley St. Mary

## DATA SOURCES

Category	Indicator	Source
Demographic Profile	Quinary population table 2019	ONS 2019 mid-year population estimates
	Population pyramid 2019	ONS 2019 mid-year population estimates
	Ethnicity 2011	ONS 2011 Census
Economy	Employment by broad industrial sector 2019	ONS Business Register and Employment Survey via NOMIS
Labour market	Claimant count: The number of people claiming Jobseeker's Allowance plus those who claim Universal Credit who are out of work (% 16-64 population) January 2018- February 2021	DWP via NOMIS
Education	School information and attainment 2017-2019	Suffolk County Council
	% 16-18-year-olds NEET (Not in Employment, Education or Training) 2017-2021	Suffolk County Council via the Suffolk Observatory
Deprivation	Index of Multiple Deprivation 2019	Ministry for Housing, Communities and Local Government
Health	Life expectancy at birth 2013-2017	Public Health England
Health	Standardised mortality ratio for deaths from all causes, cancer and circulatory disease, (aged under 75), and death from causes considered preventable (all ages), 2013-2017. The standardised mortality ratio is the ratio of observed deaths in the study group to expected deaths in the general population.	Public Health England
Community Safety	Recorded crime rate per 1,000 resident population February 2020 to January 2021	Data.police.uk via the Suffolk Observatory

For more data and information about Felixstowe North and Trimley Electoral Division, see the Suffolk Observatory [www.suffolkobservatory.info](http://www.suffolkobservatory.info)

