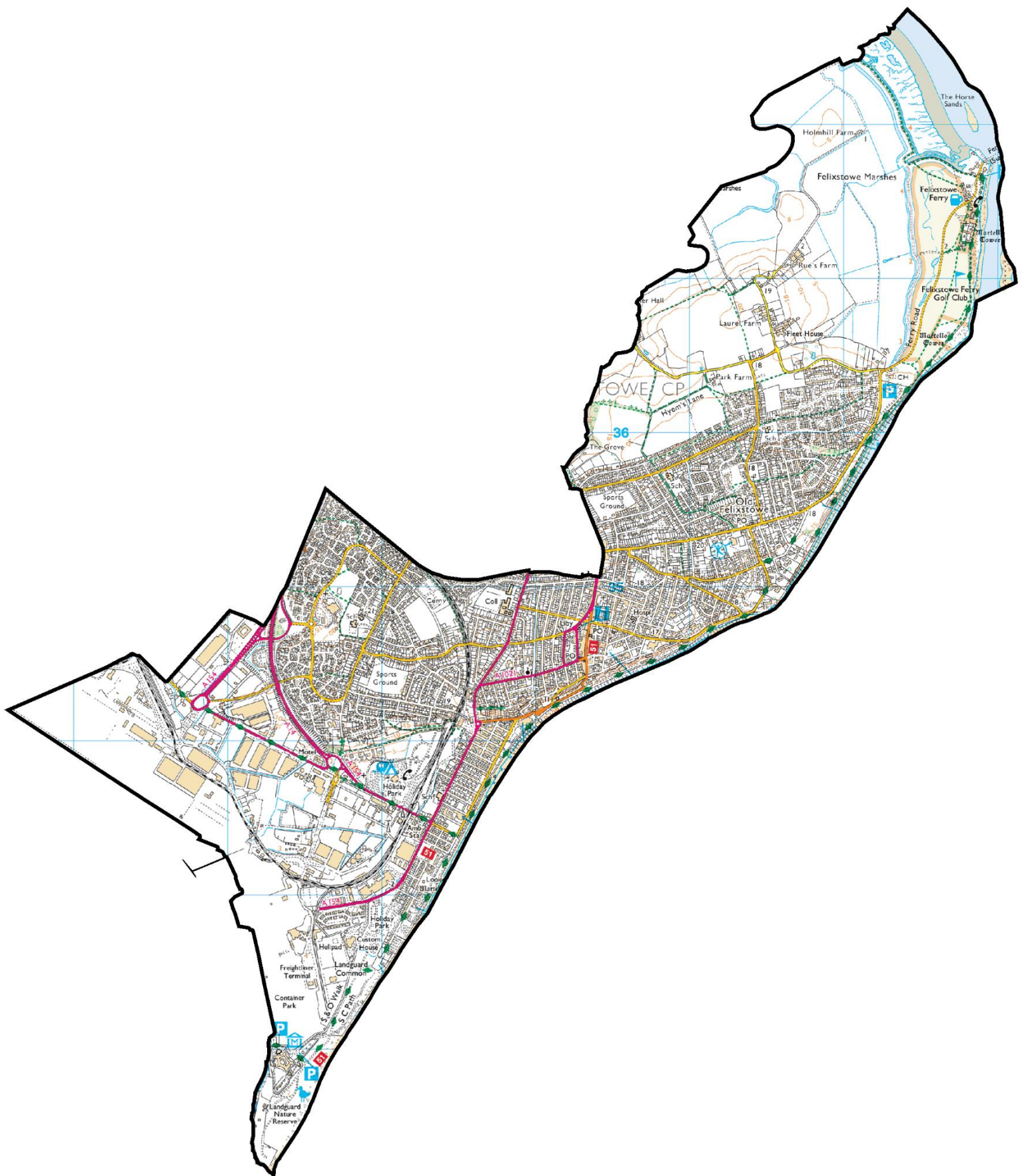


FELIXSTOWE COASTAL

ELECTORAL DIVISION PROFILE 2023

This Division comprises parts of Eastern Felixstowe and Western Felixstowe Wards

www.suffolkobservatory.info



CONTENTS

- Demographic Profile: Age & Ethnicity
- Economy and Labour Market
- Schools & NEET
- Index of Multiple Deprivation
- Health
- Crime & Community Safety
- Additional Information
- Data Sources

ELECTORAL DIVISION PROFILES: AN INTRODUCTION

These profiles have been produced to support elected members, constituents and other interested parties in understanding the demographic, economic, social and educational profile of their neighbourhoods. We have used the latest data available at the time of publication.

Much more data is available from national and local sources than is captured here, but it is hoped that the profile will be a useful starting point for discussion, where local knowledge and experience can be used to flesh out and illuminate the information presented here.

The profile can be used to help look at some fundamental questions e.g.

- Does the age profile of the population match or differ from the national profile?
- Is there evidence of the ageing profile of the county in all the wards in the Division or just some?
- How diverse is the community in terms of ethnicity?
- What is the impact of deprivation on families and residents?
- Does there seem to be a link between deprivation and school performance?
- What is the breakdown of employment sectors in the area?
- Is it a relatively healthy area compared to the rest of the district or county?
- What sort of crime is prevalent in the community?

A vast amount of additional data is available on the **Suffolk Observatory**

www.suffolkobservatory.info

The Suffolk Observatory is a free online resource that contains all Suffolk's vital statistics; it is the one-stop-shop for information and intelligence about Suffolk. Through data, reports and maps, the Suffolk Observatory provides a comprehensive picture of the County. It is a great source for useful facts and figures that can be used for writing reports and presentations, informing strategic and business planning, preparing funding applications or supporting academic research. Data is presented around the key themes of population, children and young people, health and social care, housing, crime and community safety, deprivation, economy and employment and environment. All areas of the county are covered, right down to district, electoral division, ward and parish level, with information easily accessible in a variety of formats. You can also build your own reports for custom areas.

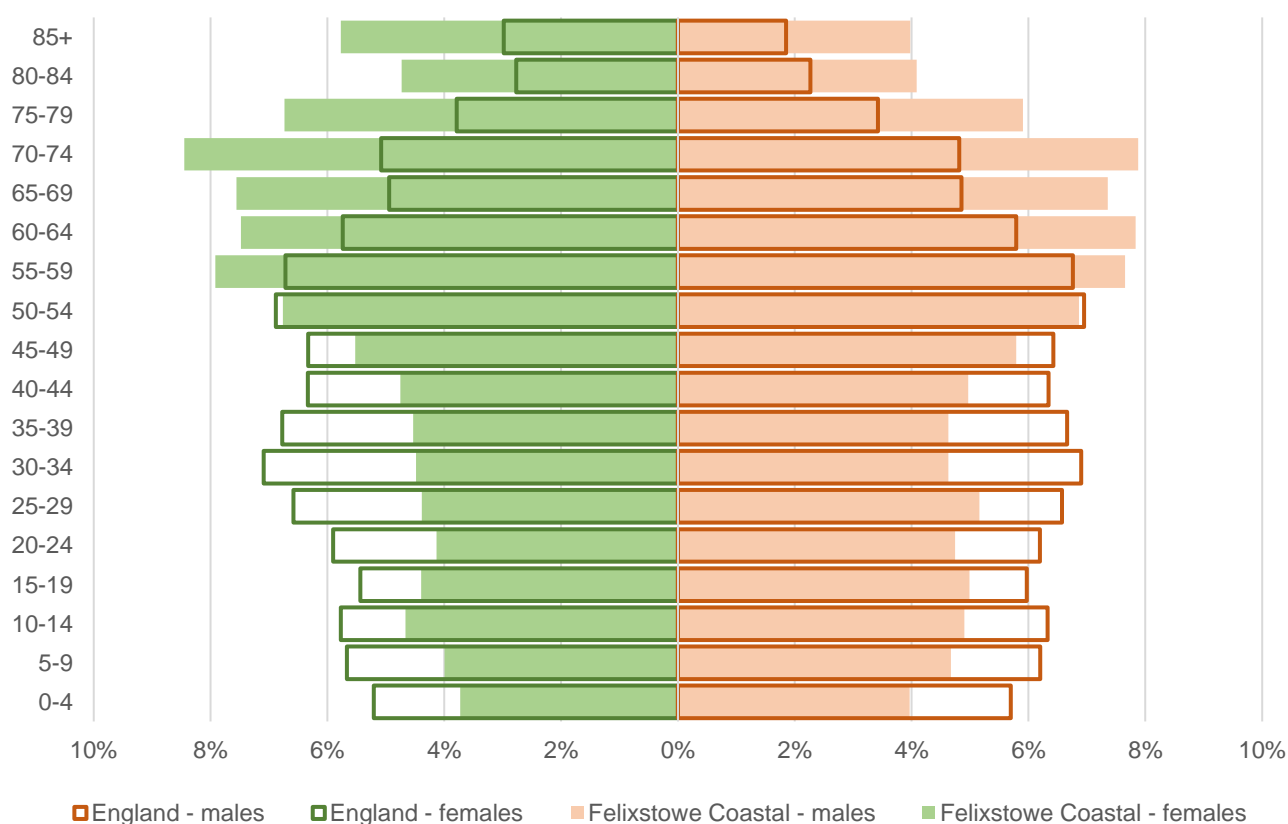
Technical Notes:

1. Where electoral divisions do not exactly match the boundaries at which the data is available (e.g. ward, Output Area or Lower Super Output Area), we have adopted a "best-fit" approach to produce a dataset.
2. District, county and national level data is provided where possible to provide a context for comparisons. Where possible we have used the most recent district boundaries for comparison purposes, but in some cases it has been necessary to use the pre-2019 districts.

DEMOGRAPHIC PROFILE - AGE

At the time of the 2021 Census, the population of Felixstowe Coastal stood at 19,606, an increase of 1.1% since the 2011 Census. The age structure of the component wards and the division as a whole is set out below:

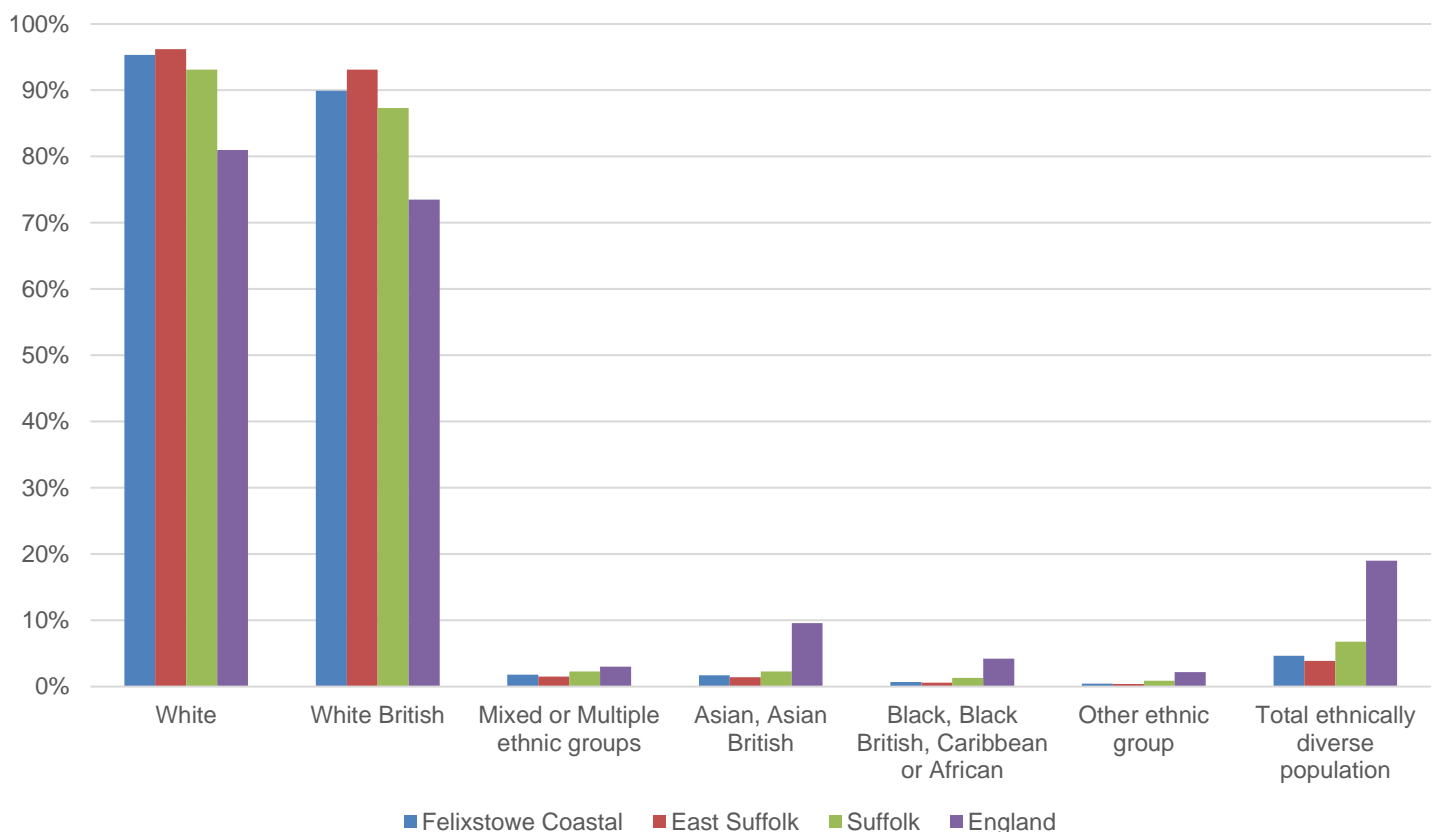
	Felixstowe Coastal Division	Eastern Felixstowe	Western Felixstowe
All Ages	19,606	12,493	7,113
0-4	760	412	348
5-9	839	484	355
10-14	943	535	408
15-19	935	545	390
20-24	860	515	345
25-29	930	477	453
30-34	897	476	421
35-39	903	513	390
40-44	943	564	379
45-49	1,103	677	426
50-54	1,329	811	518
55-59	1,529	951	578
60-64	1,504	976	528
65-69	1,453	983	470
70-74	1,612	1,185	427
75-79	1,248	914	334
80-84	858	681	177
85+	960	794	166



- The age pyramid for Felixstowe Coastal shows a relatively elderly age profile, with a higher-than-average proportion of people in every age band over 55. Nearly 40% of the population of the division is aged 60 or above.

- The most common age group in Felixstowe Coastal is 70-74-year-olds, followed by 55-59-year-olds.
- There is a much lower than average proportion of children and adults of working age, particularly 20-39-year-olds.

ETHNICITY

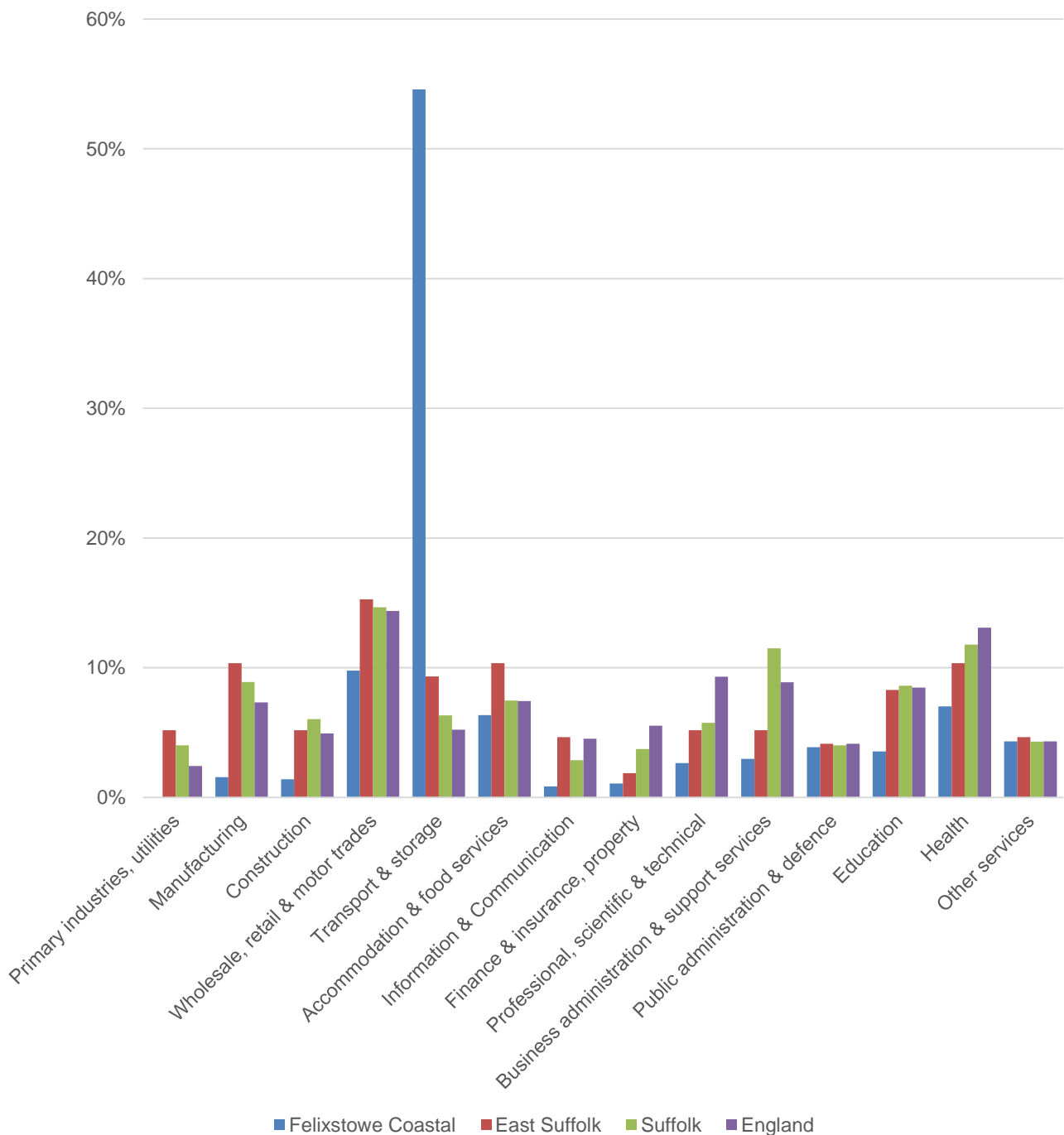


- According to the latest data (2021 Census), 95.4% (18,688) of the population of Felixstowe Coastal are white, with 89.9% white British.
- There are 911 (4.6%) people who identify as ethnically diverse usually resident in the division.
- Felixstowe Coastal has a greater proportion of ethnically diverse residents than East Suffolk as a whole.

	All people	White		White British		Mixed or multiple ethnic group		Asian and Asian British		Black, Black British, Caribbean or African		Other ethnic Group		Total ethnically diverse population	
	Count	Count	%	Count	%	Count	%	Count	%	Count	%	Count	%	Count	%
Felixstowe Coastal	19,599	18,688	95.4	17,621	89.9	351	1.8	337	1.7	137	0.7	86	0.4	911	4.6
East Suffolk	246,060	236,627	96.2	229,063	93.1	3,707	1.5	3,447	1.4	1,357	0.6	922	0.4	9,433	3.9
Suffolk	760,687	708,271	93.1	664,205	87.3	17,807	2.3	17,483	2.3	10,168	1.3	6,958	0.9	52,416	6.8
England			81.0		73.5		3.0		9.6		4.2		2.2		19.0

ECONOMY

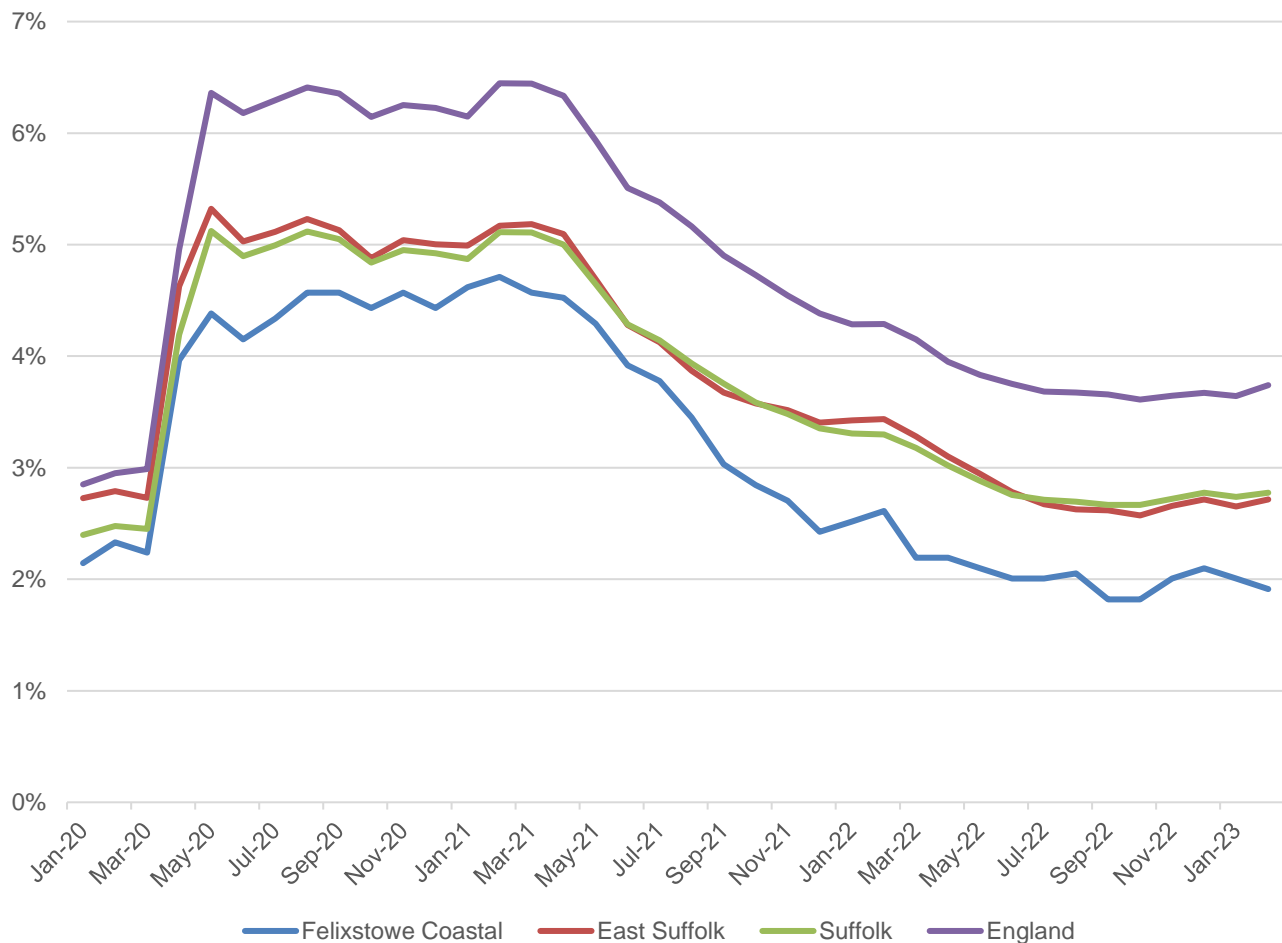
There are 11,100 people employed in Felixstowe Coastal.



- Transport and storage is by far the most important industry in Felixstowe Coastal in terms of employment, with more than half of workers in the division employed in this sector. This sector includes Port of Felixstowe activities and related haulage and warehousing.
- Such is the dominance of transport and storage employment in the division that all other sectors account for proportionally fewer jobs than across East Suffolk as a whole.
- Wholesale, retail and motor trades is the next most important sector, supporting almost 1 in 10 jobs in the division.

LABOUR MARKET

OUT-OF-WORK BENEFIT CLAIMANT RATE



- Felixstowe Coastal saw a sharp increase in claimants of out-of-work benefits in the first half of 2020 as a result of the COVID-19 pandemic, much like the rest of the county and England as a whole.
- The claimant rate remained at a similarly high level until spring 2021, but has seen a steady decline since then.
- Claimant unemployment levels in the division are consistently below those of the district, county and England as a whole.
- In percentage terms, approximately 2% of the working age population of Felixstowe Coastal are claiming out-of-work benefits in February 2023.

SCHOOLS

Attainment data is currently not available beyond 2019 due to the impact of the COVID-19 pandemic. The next available attainment data will be for the 2022/23 school year. The cohort sizes here refer to the last period of available attainment data. Ofsted information is up to date.

SCHOOL INFORMATION

Schools in the Division

Name	Phase	Academy Status	Average cohort size at:				Latest Ofsted	Latest Ofsted Date
			Foundation Stage (age 5)	KS2 (age 11)	KS4 (age 16)	KS5 (age 18)		
Colneis Junior School	Primary	LA		87			Good	13/12/2022
Grange Community Primary School	Primary	AS	29	26			Good	29/11/2022
Kingsfleet Primary School	Primary	LA	28	27			Good	07/03/2019
Langer Primary Academy	Primary	AS	20	23			Inadequate	10/03/2020

Schools with catchments that overlap with the Division

Name	Phase	Academy Status	Average cohort size at:				Latest Ofsted	Latest Ofsted Date
			Foundation Stage (age 5)	KS2 (age 11)	KS4 (age 16)	KS5 (age 18)		
Fairfield Infant School	Primary	LA	90				Good	12/07/2017
SET Causton Juniors	Primary	AC		49			Good	05/12/2018
SET Maidstone Infants	Primary	AC	42				Good	10/07/2018
Felixstowe School	Secondary	AS			195	46	Requires improvement	07/12/2021

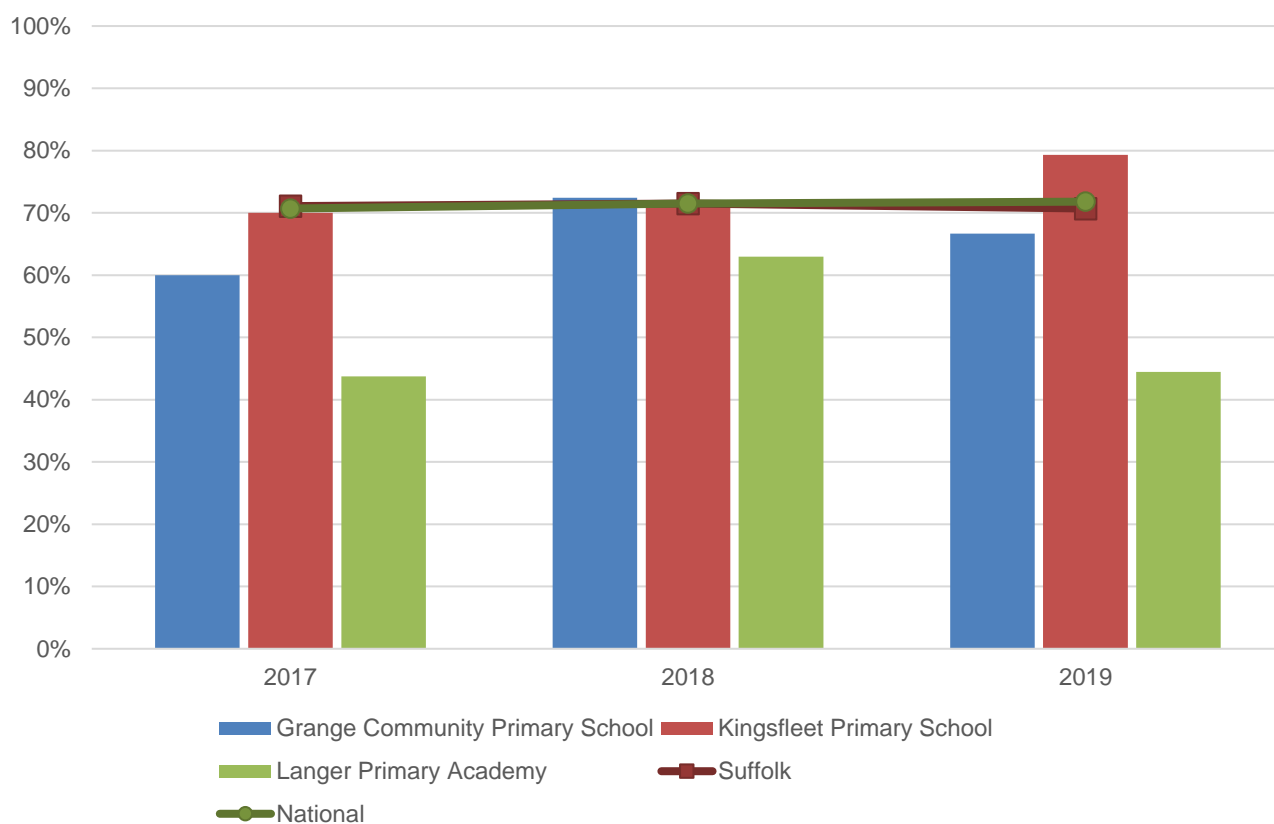
Academy Status key: AS = Academy Sponsored, AC = Academy Converter, LA = LA Maintained, F = Free

*The latest full inspection judgement does not relate to the current school

SCHOOL ATTAINMENT

Foundation Stage Profile (reception)

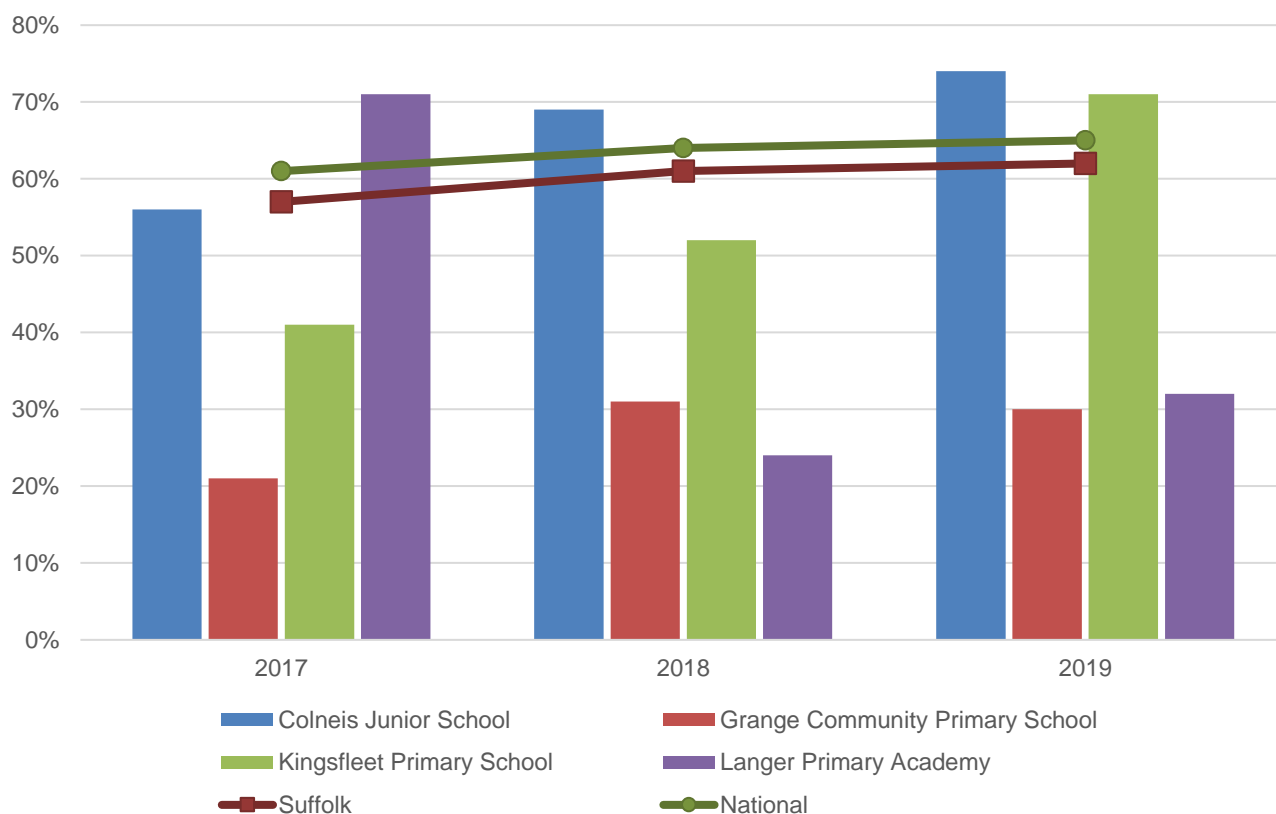
% pupils achieving Good Level of Development (GLD)



- Foundation stage attainment over the last three years at schools in Felixstowe Coastal has been mixed.
- Kingsfleet Primary School has seen the most consistent Foundation Stage attainment during this period, with results consistently close to or above the national average.
- Pupil attainment at Langer Primary Academy has been consistently below average from 2017 to 2019.
- Grange Community Primary School had the highest Foundation Stage attainment of any school in the division in 2018, but below average performance in the other two years of data presented here.

Key Stage 2 (age 11)

% pupils achieving the Expected Level or better in Reading, Writing and Mathematics

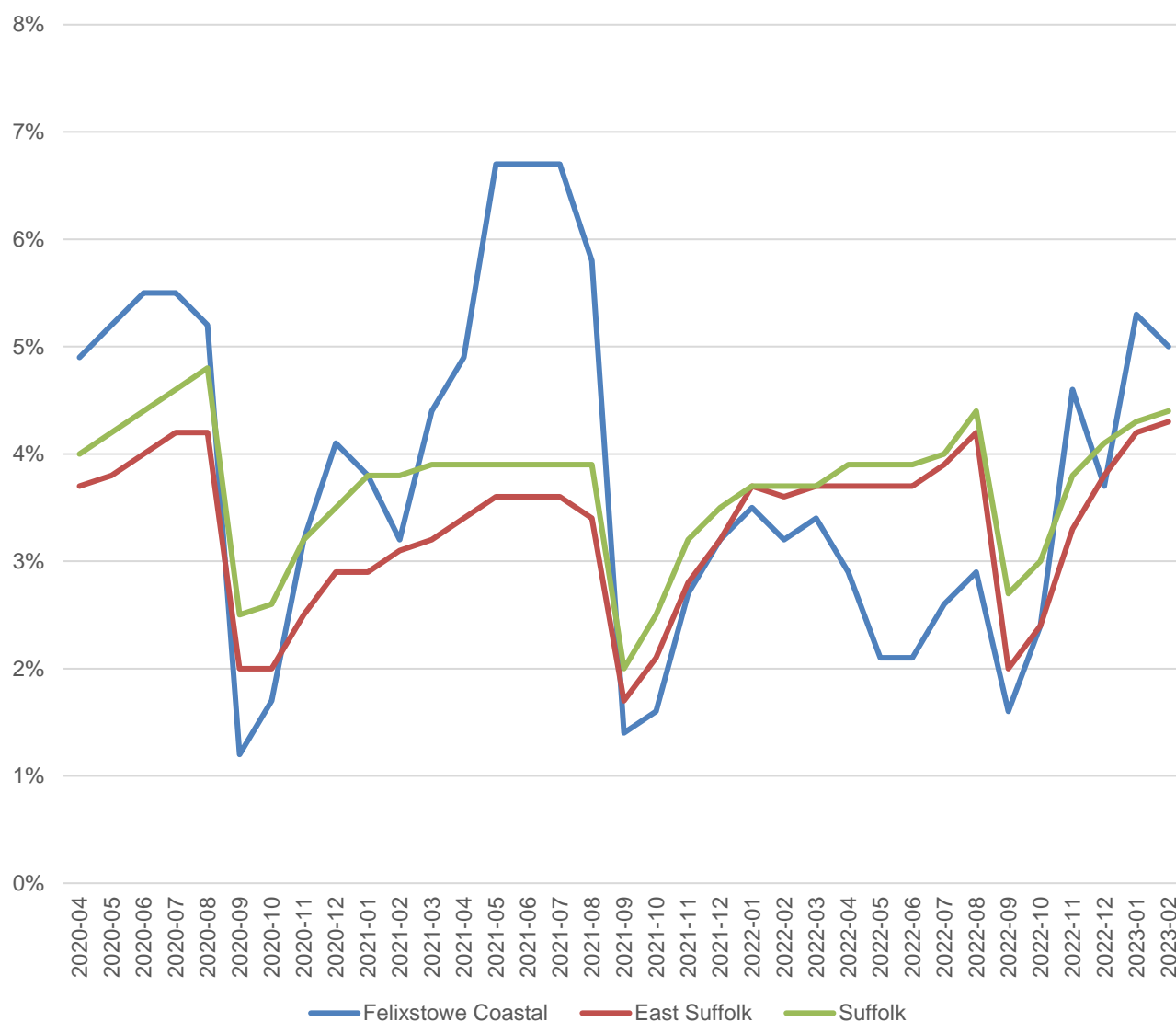


- Key Stage 2 attainment at schools in Felixstowe Coastal has been very varied over the last three years.
- In 2019, two schools in the division (Colneis Junior and Kingsfleet Primary) had very high KS2 attainment, above the national average, while the other two schools (Grange Community Primary and Langer Primary Academy) had attainment levels more than 30 percentage points below the national benchmark.
- Attainment at Grange Community Primary School has been consistently well below average throughout this period.
- Langer Primary Academy had the strongest attainment in the division in 2017, also above the national average. However, attainment at the school in the two years since then has been very low.
- Pupil attainment at Colneis Junior School has steadily improved during this period and was the highest in the division in 2018 and 2019. Kingsfleet Primary has also seen improving KS2 attainment in 2018 and 2019.

Key Stage 4 (GCSE) (age 16) and Key Stage 5 (A Level) (age 18)

There are no Upper Schools located within the division.

NEET % (NOT IN EDUCATION, EMPLOYMENT OR TRAINING)

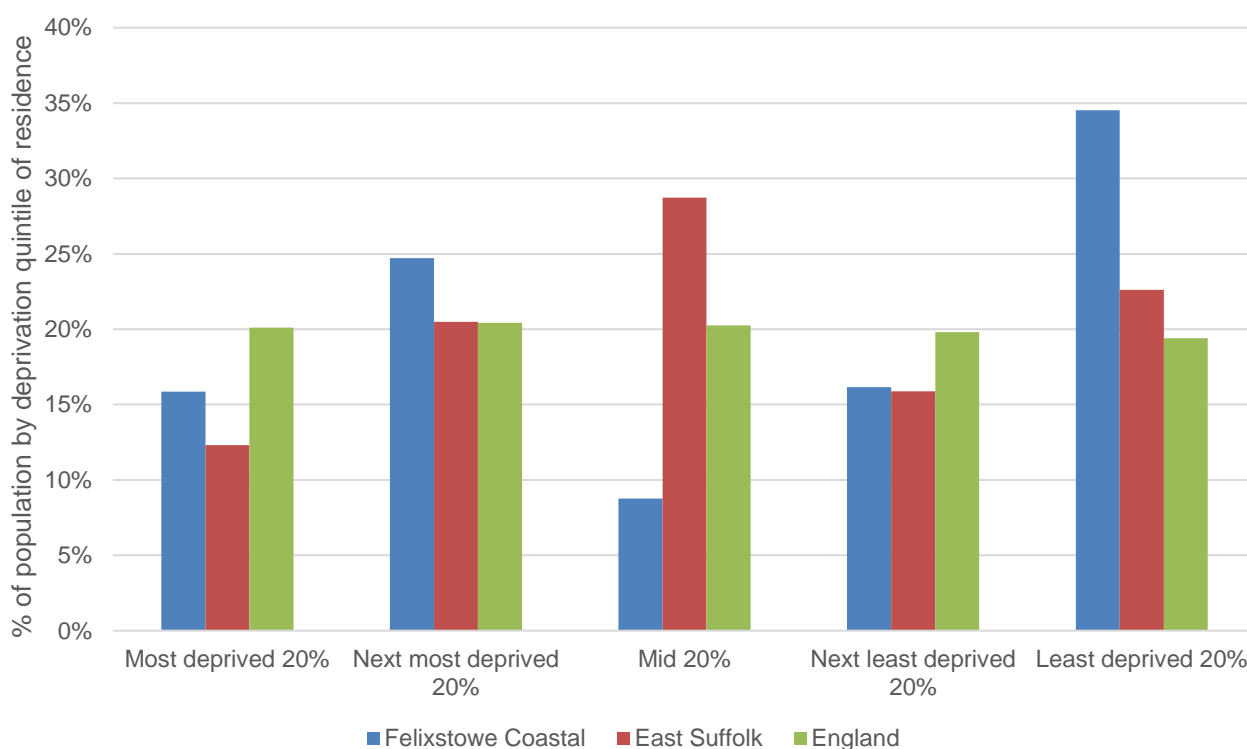


- In February 2023, 5% of 16–17-year-olds in Felixstowe Coastal were classified as NEET (where current activity is known), slightly above the East Suffolk and county averages.
- The NEET level in Felixstowe Coastal undergoes significant fluctuations due to the relatively small cohort in the division. It was below average for 13 months from September 2021.

INDEX OF MULTIPLE DEPRIVATION (IMD) 2019 (SEE MAP OVERLEAF)

The IMD combines a number of indicators, chosen to cover a range of economic, social and housing issues, into a single deprivation score for each small area in England. This allows each area to be ranked relative to one another according to their level of deprivation. Small areas (Lower Super Output Areas, average population 1,700) are most commonly described as being in 1 of 5 quintile bands. The bottom quintile represents the 20% of areas that are the most deprived in England; these are shaded pale yellow on the map. The top quintile represents the least deprived areas in England and is shaded dark blue.

The Index is widely used to analyse patterns of deprivation, identify areas that would benefit from special initiatives or programmes and as a tool to determine eligibility for specific funding streams.



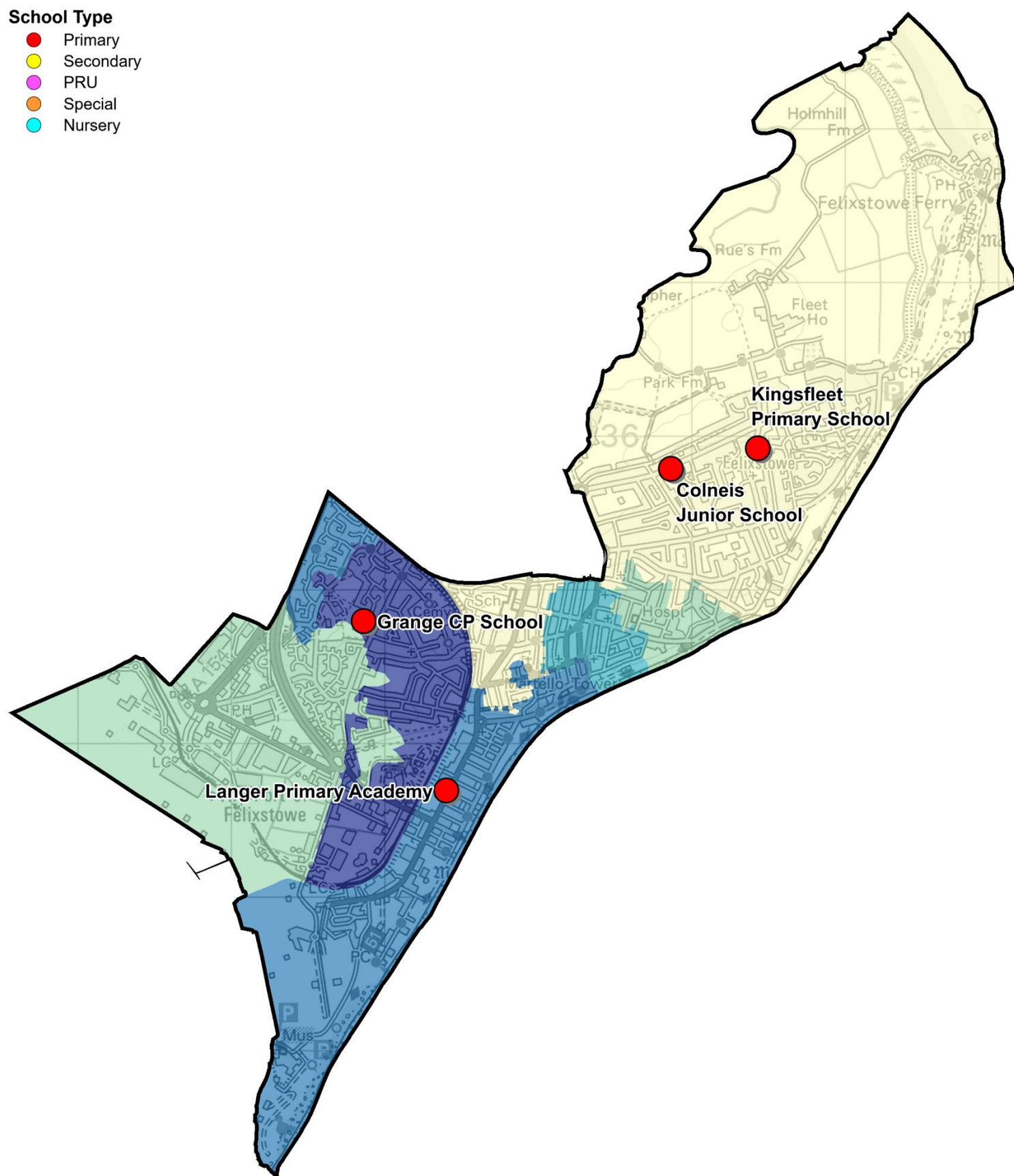
- The IMD 2019 shows that relative deprivation levels in Felixstowe Coastal are extremely varied, with the division split across all five quintiles from the most deprived 20% of areas in England to the least deprived 20%.
- Of the twelve Lower Layer Super Output Areas (LSOA) comprising the division, four are ranked in the 20% least deprived LSOAs in the country (home to 34% of the population of the division as shown in the chart above), two are in the next least deprived quintile, one is in the mid quintile, three are in the second most deprived quintile and two are in the most deprived quintile.
- The map overleaf shows the distribution of these areas. Part of the division that is among the least deprived 20% of areas in England directly abuts an area in the most deprived 20%.

IMD 2019 quintile

- Least deprived 20%
- Next least deprived 20%
- Mid 20%
- Next most deprived 20%
- Most deprived 20%

School Type

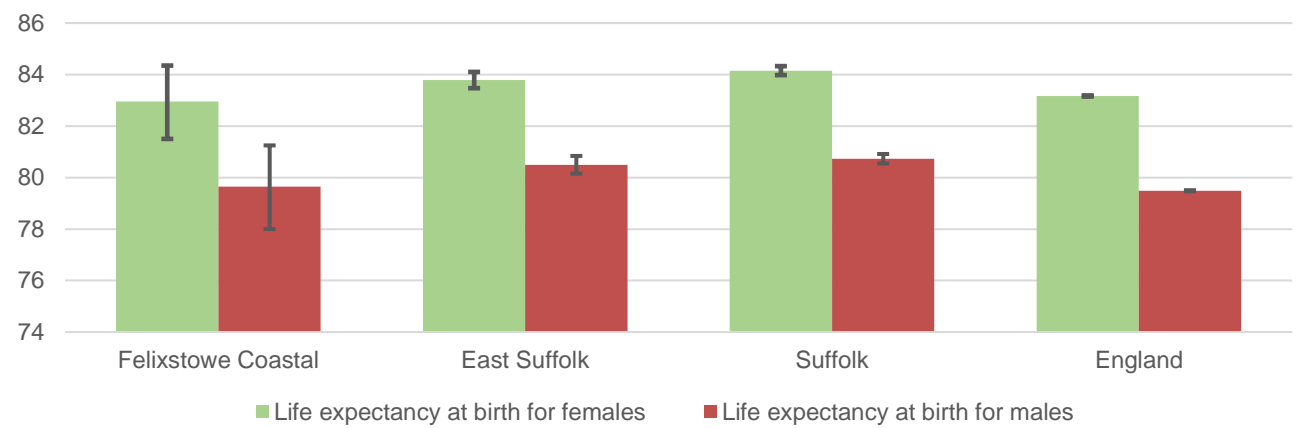
- Primary
- Secondary
- PRU
- Special
- Nursery



HEALTH

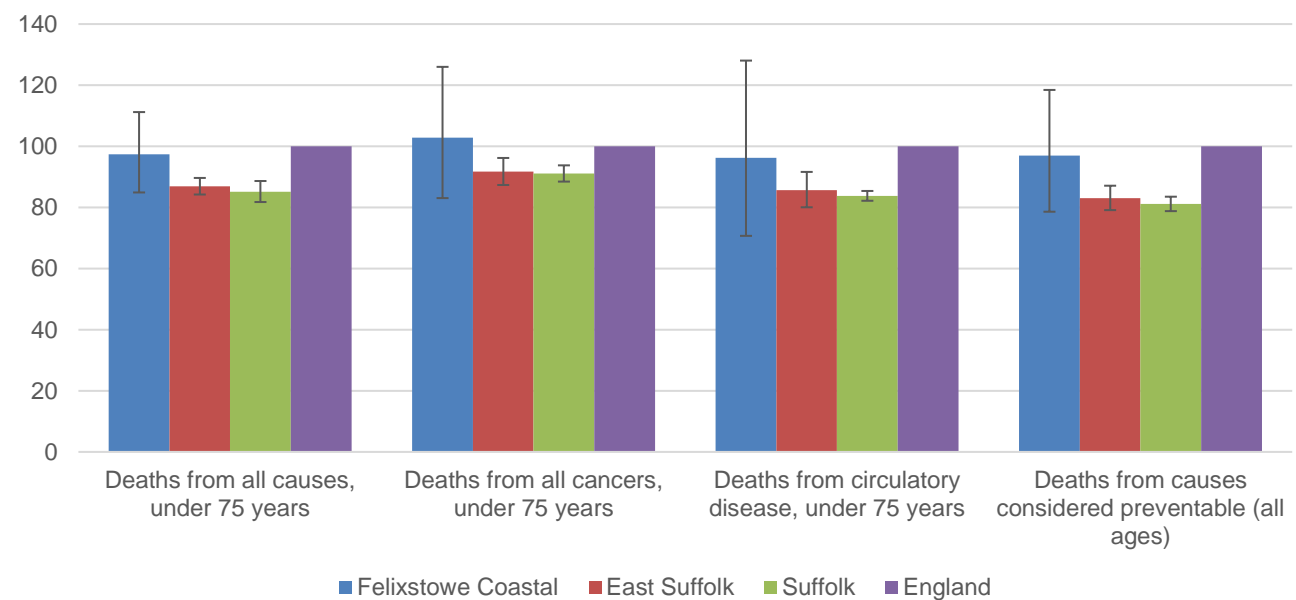
The local data used here is based on relatively small numbers of deaths. The confidence limits provide an indication of the reliability of the data. The 95% confidence intervals utilised on the chart provide a range within which there is 95% chance of the true result lying.

LIFE EXPECTANCY AT BIRTH



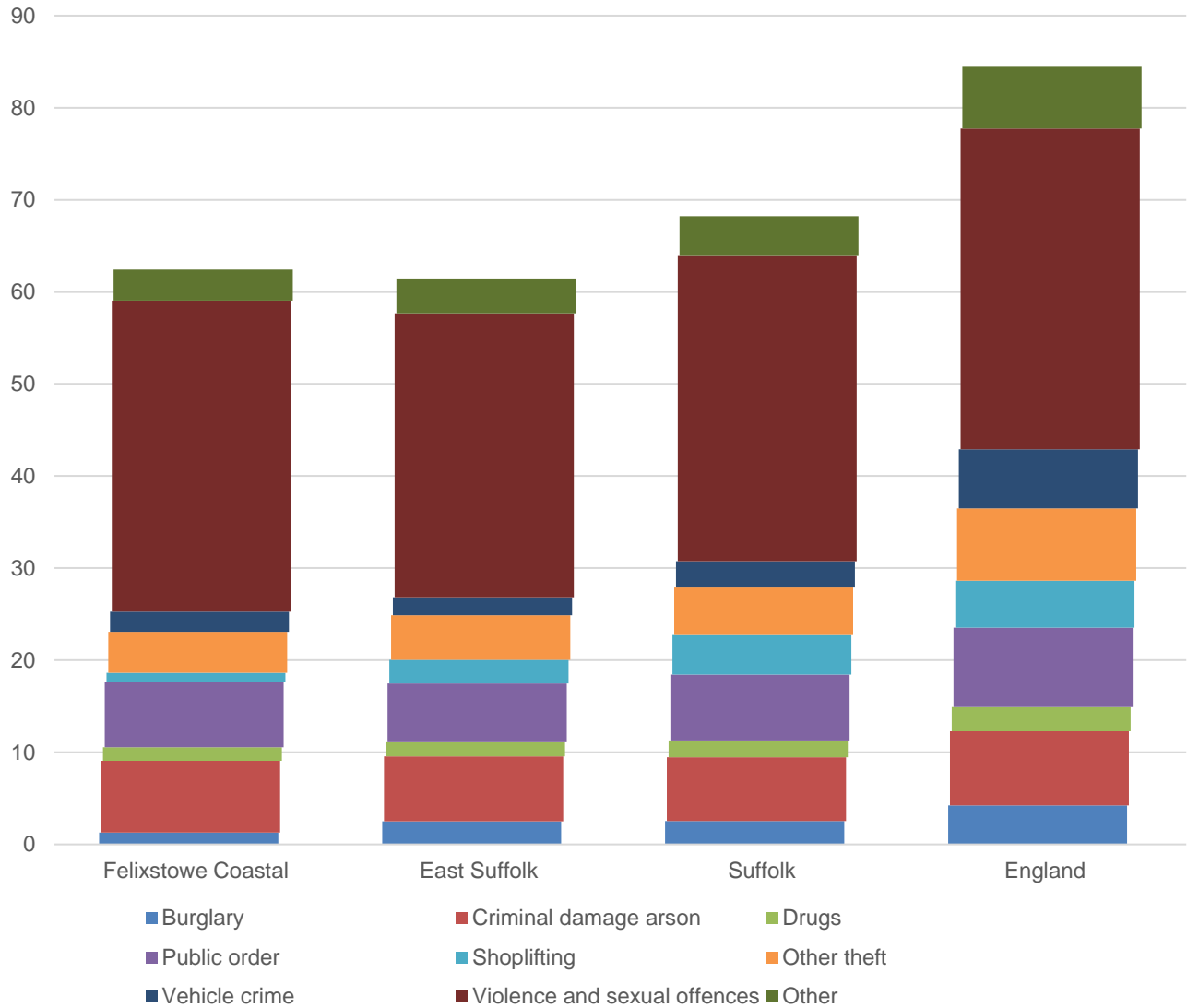
- Estimated life expectancy at birth in Felixstowe Coastal is below the East Suffolk, county and national averages for both women and men.
- The estimated figure for female life expectancy in the division is 83 years (84.1 across Suffolk), while for females it is 79.7 years (80.7 is the Suffolk average).

DEATHS, UNDER 75 YEARS, STANDARDISED MORTALITY RATIO



- Estimated mortality rates from all causes, cancers, circulatory disease and from causes considered preventable in the division are above average when compared to figures for East Suffolk and Suffolk county.
- It should be noted that the confidence intervals around these data are wide.
- The standardised mortality ratio data shown here means that for every 100 early deaths from all causes across England as a whole, there are an estimated 97 comparable deaths in Felixstowe Coastal.

CRIME & COMMUNITY SAFETY



- Crime levels in Felixstowe Coastal are similar to the level for East Suffolk, with a rate of 62 crimes recorded per 1,000 residents in the 12 months of the end of March 2023.
- This is below the Suffolk average of 68 crimes per 1,000 residents and just above the East Suffolk rate of 61 crimes per 1,000 residents.
- As seen elsewhere, violence and sexual offences was the most common type of crime in the division, accounting for just over half of all recorded crime during this period.
- Most crimes occur at a similar or lower rate in the division than across Suffolk as a whole. Criminal damage and arson offences are relatively slightly more common in Felixstowe Coastal, with 7.8 crimes recorded per 1,000 residents compared to 7.1 across East Suffolk and 6.9 across the county

ADDITIONAL INFORMATION

Parishes in Division

Felixstowe (part)

DATA SOURCES

Category	Indicator	Source
Demographic Profile	Quinary population table 2021	ONS 2021 Census
	Population pyramid 2021	ONS 2021 Census
	Ethnicity 2021	ONS 2021 Census
Economy	Employment by broad industrial sector 2021	ONS Business Register and Employment Survey via NOMIS
Labour market	Claimant count: The number of people claiming Jobseeker's Allowance plus those who claim Universal Credit who are out of work (% 16-64 population) January 2020- February 2023	DWP via NOMIS
Education	School information and attainment 2017-2019	Suffolk County Council
	% 16-18-year-olds NEET (Not in Employment, Education or Training) 2020-2023	Suffolk County Council via the Suffolk Observatory
Deprivation	Index of Multiple Deprivation 2019	Department for Levelling Up, Housing and Communities and Ministry of Housing, Communities & Local Government
Health	Life expectancy at birth 2016-2020	Office for Health Improvement and Disparities
Health	Standardised mortality ratio for deaths from all causes, cancer and circulatory disease, (aged under 75), and death from causes considered preventable (all ages), 2016-2020. The standardised mortality ratio is the ratio of observed deaths in the study group to expected deaths in the general population.	Office for Health Improvement and Disparities
Community Safety	Recorded crime rate per 1,000 resident population for the year from April 2022 to March 2023	Data.police.uk via the Suffolk Observatory

There are small discrepancies between total population figures from different 2021 Census outputs (e.g. population by age and by ethnic group). This is due to the way that ONS has treated particularly unusual records at a local level.

For more data and information about Felixstowe Coastal Electoral Division, see the Suffolk Observatory www.suffolkobservatory.info

