

ALDEBURGH & LEISTON

ELECTORAL DIVISION PROFILE 2021

This Division comprises part of Aldeburgh & Leiston Ward

www.suffolkobservatory.info



CONTENTS

- Demographic Profile: Age & Ethnicity
- Economy and Labour Market
- Schools & NEET
- Index of Multiple Deprivation
- Health
- Crime & Community Safety
- Data Sources

ELECTORAL DIVISION PROFILES: AN INTRODUCTION

These profiles have been produced to support elected members, constituents and other interested parties in understanding the demographic, economic, social and educational profile of their neighbourhoods. We have used the latest data available at the time of publication.

Much more data is available from national and local sources than is captured here, but it is hoped that the profile will be a useful starting point for discussion, where local knowledge and experience can be used to flesh out and illuminate the information presented here.

The profile can be used to help look at some fundamental questions e.g.

- Does the age profile of the population match or differ from the national profile?
- Is there evidence of the ageing profile of the county in all the wards in the Division or just some?
- How diverse is the community in terms of ethnicity?
- What is the impact of deprivation on families and residents?
- Does there seem to be a link between deprivation and school performance?
- What is the breakdown of employment sectors in the area?
- Is it a relatively healthy area compared to the rest of the district or county?
- What sort of crime is prevalent in the community?

A vast amount of additional data is available on the **Suffolk Observatory**

www.suffolkobservatory.info

The Suffolk Observatory is a free online resource that contains all Suffolk's vital statistics; it is the one-stop-shop for information and intelligence about Suffolk. Through data, reports and maps, the Suffolk Observatory provides a comprehensive picture of the County. It is a great source for useful facts and figures that can be used for writing reports and presentations, informing strategic and business planning, preparing funding applications or supporting academic research. Data is presented around the key themes of population, children and young people, health and social care, housing, crime and community safety, deprivation, economy and employment and environment. All areas of the county are covered, right down to district, electoral division, ward and parish level, with information easily accessible in a variety of formats. You can also build your own reports for custom areas.

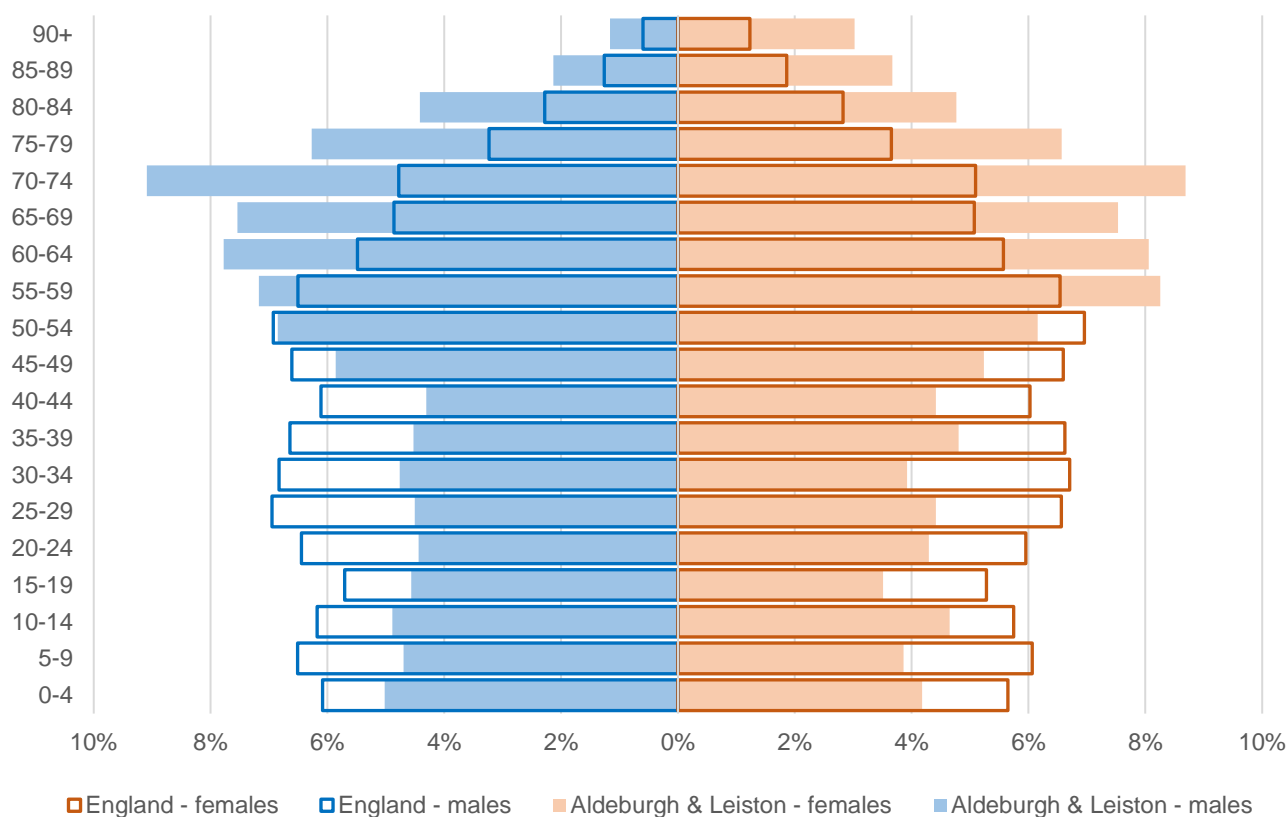
Technical Notes:

1. Where electoral divisions do not exactly match the boundaries at which the data is available (e.g. ward, Output Area or Lower Super Output Area), we have adopted a "best-fit" approach to produce a dataset.
2. District, county and national level data is provided where possible to provide a context for comparisons. Where possible we have used the most recent district boundaries for comparison purposes, but in some cases it has been necessary to use the pre-2019 districts.

DEMOGRAPHIC PROFILE - AGE

In mid-2019, the population of Aldeburgh and Leiston stood at 9,740, an increase of 1.6% since the 2011 Census. The age structure for the division is set out below.

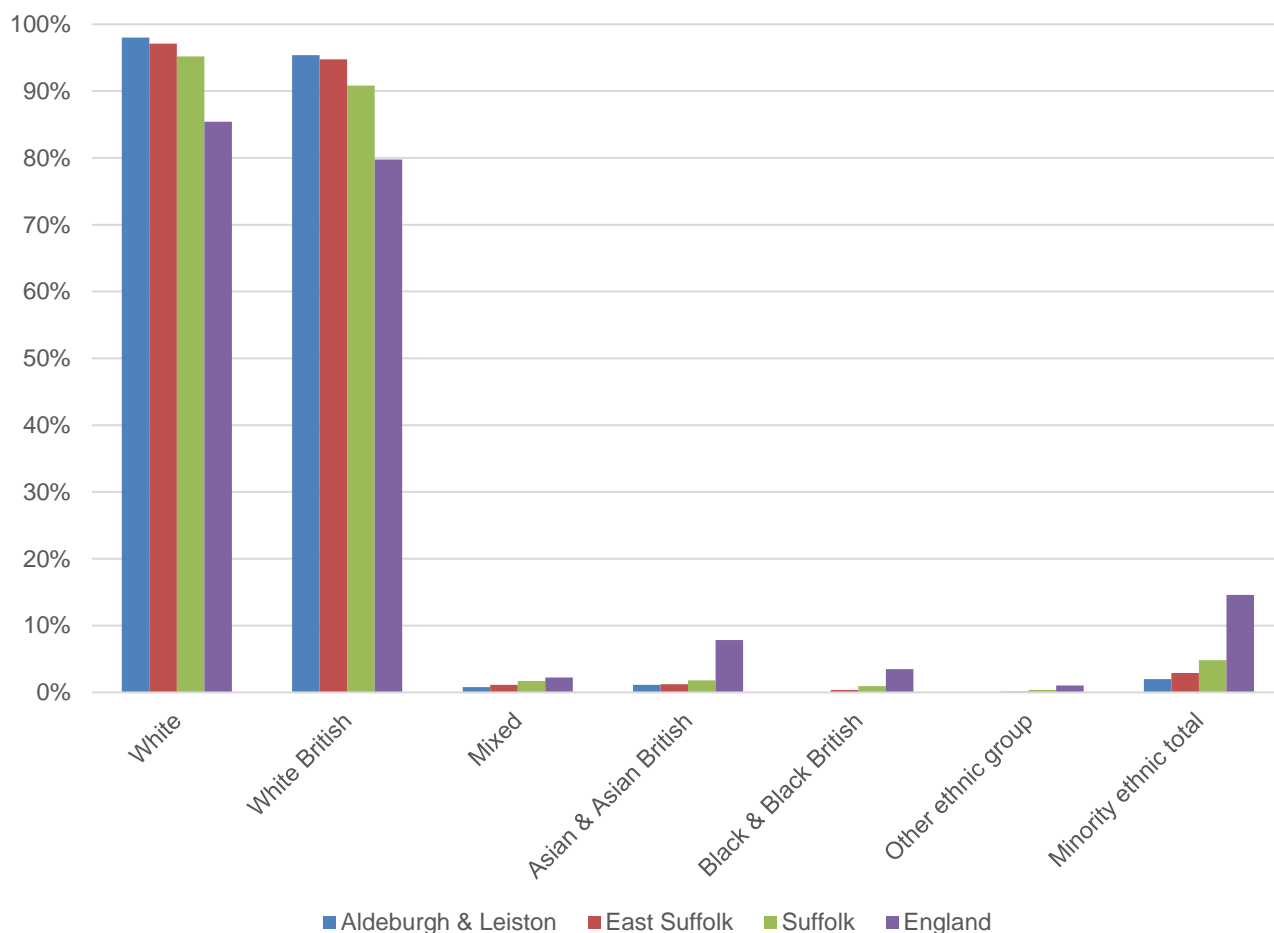
Aldeburgh and Leiston Division	
All Ages	9,740
0-4	446
5-9	415
10-14	464
15-19	391
20-24	425
25-29	434
30-34	421
35-39	455
40-44	425
45-49	539
50-54	632
55-59	754
60-64	772
65-69	734
70-74	865
75-79	626
80-84	448
85-89	286
90+	208



- The age pyramid for Aldeburgh and Leiston shows a much higher-than-average proportion of people over the age of 55. The division has a relatively elderly population profile.

- The most common age group in Aldeburgh and Leiston is 70-74-year-olds, followed by 60-64-year-olds.
- There is a much lower than average number of people of working age, particularly aged between 20 and 44.
- Just over 40% of the population of the division is aged over 60.

ETHNICITY

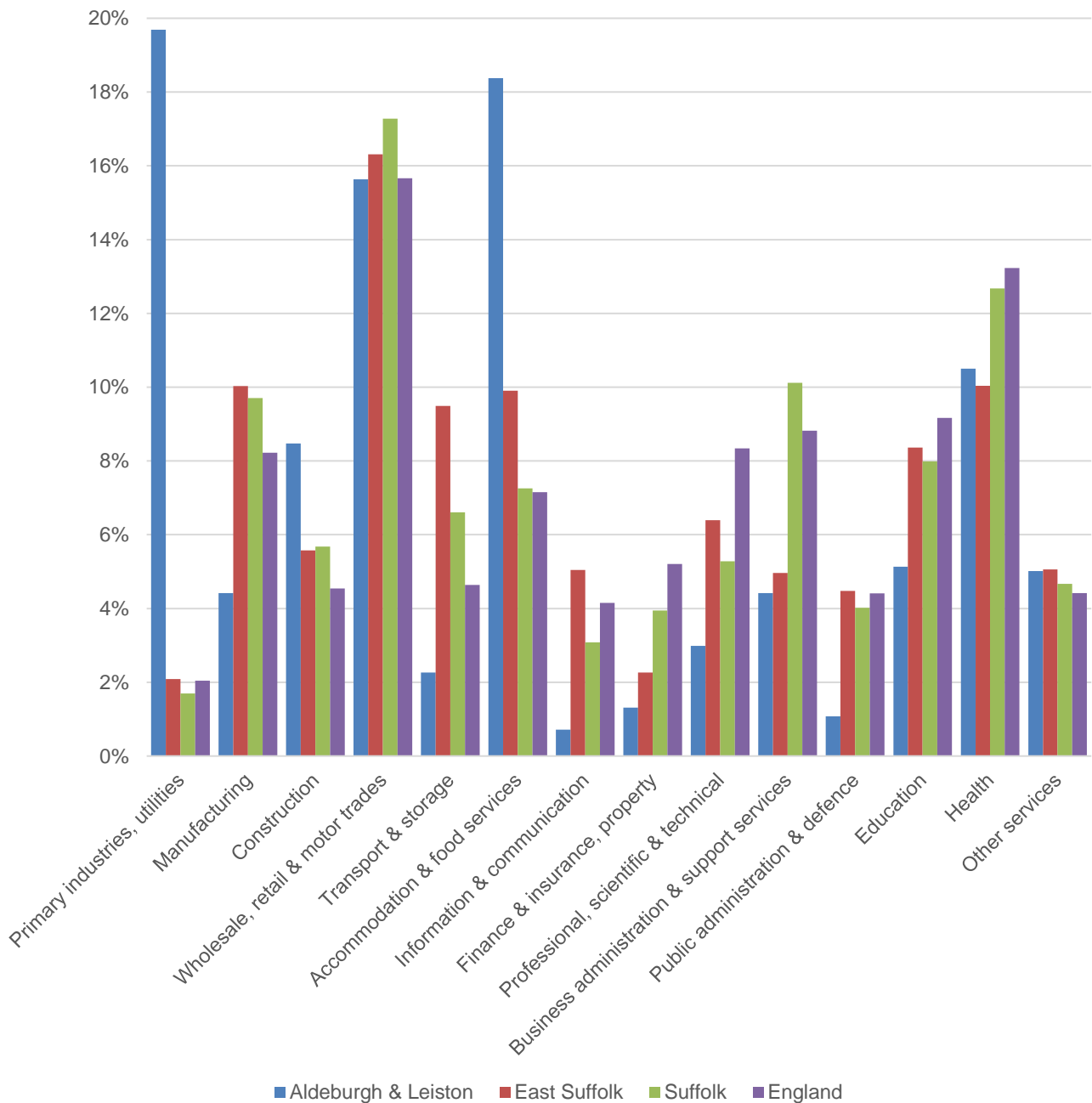


- According to the latest data (2011 Census), 98% (9,393) of the population of Aldeburgh and Leiston are white, which is above average for a division in Suffolk.
- There are 192 (2%) people of minority ethnic origin in the division.
- Aldeburgh and Leiston has a similar diversity profile to East Suffolk district, and generally lower proportions of minority ethnic groups than Suffolk as a whole.

	All people	White		White British		Mixed		Asian and Asian British		Black and Black British		Other Ethnic Group		Total minority ethnic population	
	Count	Count	%	Count	%	Count	%	Count	%	Count	%	Count	%	Count	%
Aldeburgh & Leiston	9,585	9,393	98.0	9,142	95.4	78	0.8	108	1.1	4	0.0	2	0.0	192	2.0
East Suffolk	239,552	232,565	97.1	227,040	94.8	2,728	1.1	2,991	1.2	925	0.4	343	0.1	6,987	2.9
Suffolk	728,163	693,195	95.2	661,458	90.8	12,472	1.7	13,131	1.8	6,854	0.9	2,511	0.3	34,968	4.8
England			85.4		79.8		2.3		7.8		3.5		1.0		14.6

ECONOMY

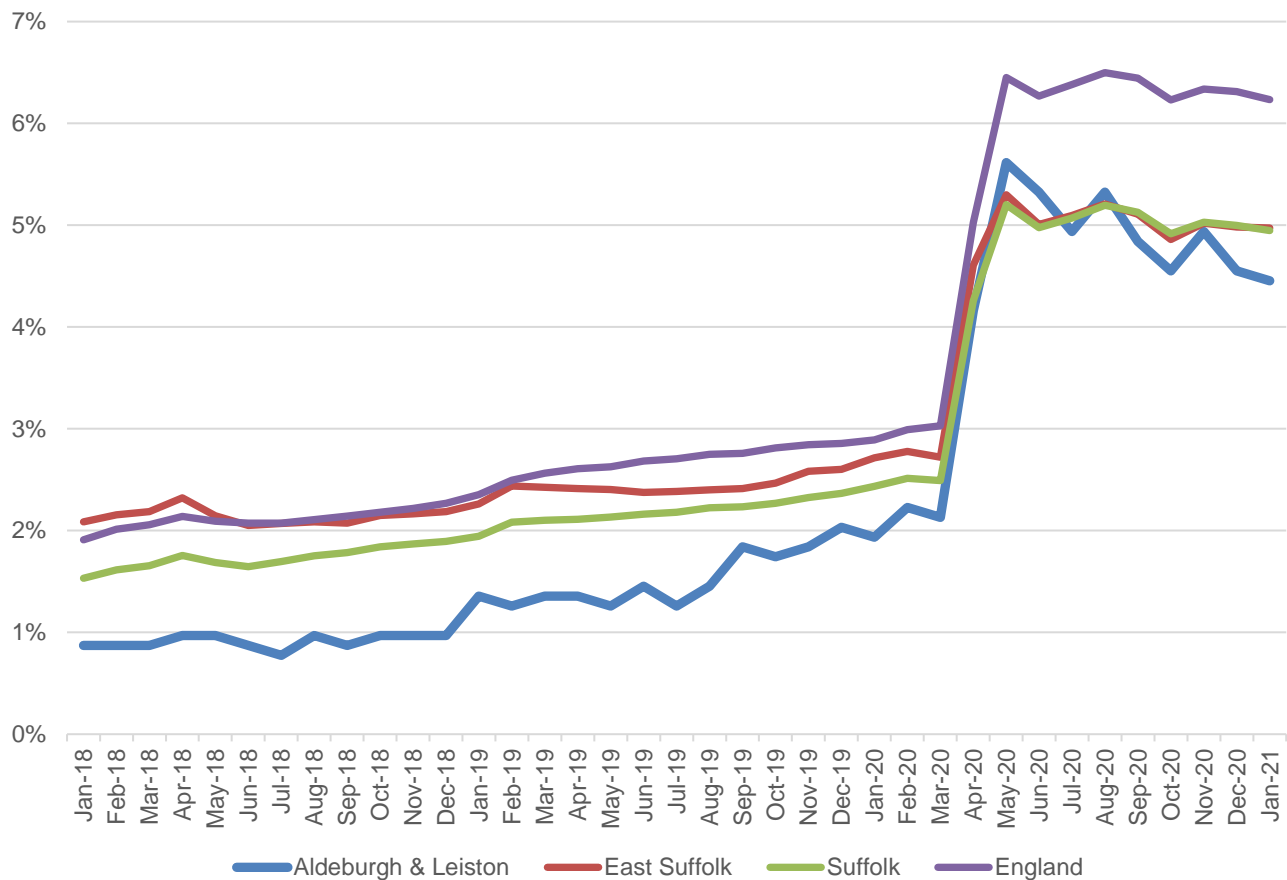
There are 4,200 people employed in Aldeburgh and Leiston.



- The key employment sectors in Aldeburgh and Leiston are primary industries and utilities, accommodation and food services, wholesale, retail and motor trades, and health.
- Sizewell nuclear power station is located in this division, and this is reflected in the primary industries and utilities figures, with around 1 in 5 jobs in the division classified in this sector.
- Around a third of employees in Aldeburgh and Leiston are employed in wholesale, retail and motor trades and accommodation and food services, many of which will be related to tourism.

LABOUR MARKET

OUT-OF-WORK BENEFIT CLAIMANT RATE



- Aldeburgh and Leiston saw a sharp increase in claimants of out-of-work benefits in the first half of 2020 as a result of the COVID-19 pandemic.
- In percentage terms, around 4.5% of the working age population (aged 16-64) are claiming out-of-work benefits. This is around half a percentage point below the East Suffolk and county figures and considerably below the England average.
- Prior to the onset of the pandemic, the rate of out-of-work benefit claimants in the division was consistently below average.

SCHOOLS

SCHOOL INFORMATION

Schools in the Division

Name	Phase	Academy Status	Average cohort size at:				Latest Ofsted	Latest Ofsted Date
			Foundation Stage (age 5)	KS2 (age 11)	KS4 (age 16)	KS5 (age 18)		
Aldeburgh Primary School	Primary	AC	14	13			Good*	05/03/2020
Coldfair Green Community Primary School	Primary	AC	19	18			Good*	17/06/2011
Leiston Primary School	Primary	AC	37	36			Good	01/12/2017
Alde Valley School	Secondary	AS			73	20	Good	21/09/2017

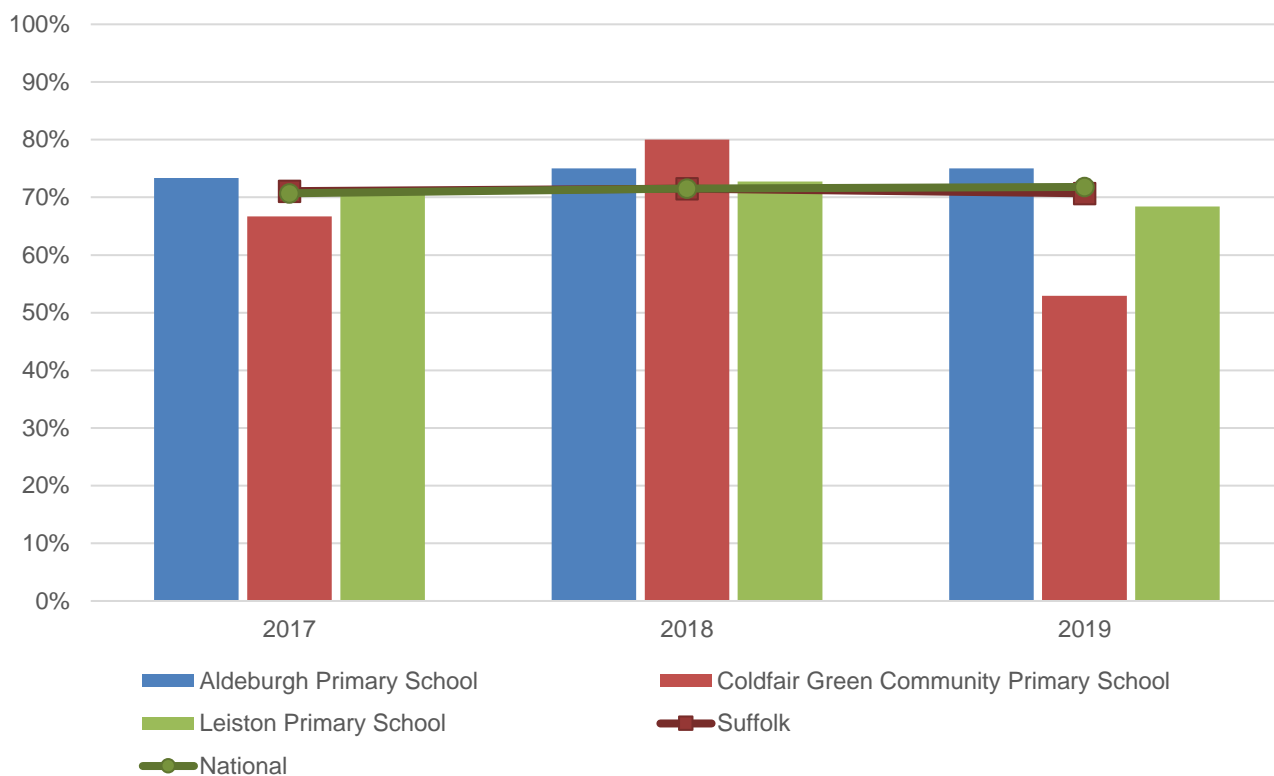
Academy Status key: AS = Academy Sponsored, AC = Academy Converter, LA = LA Maintained, F = Free

*The latest full inspection judgement does not relate to the current school

SCHOOL ATTAINMENT

Foundation Stage Profile (reception)

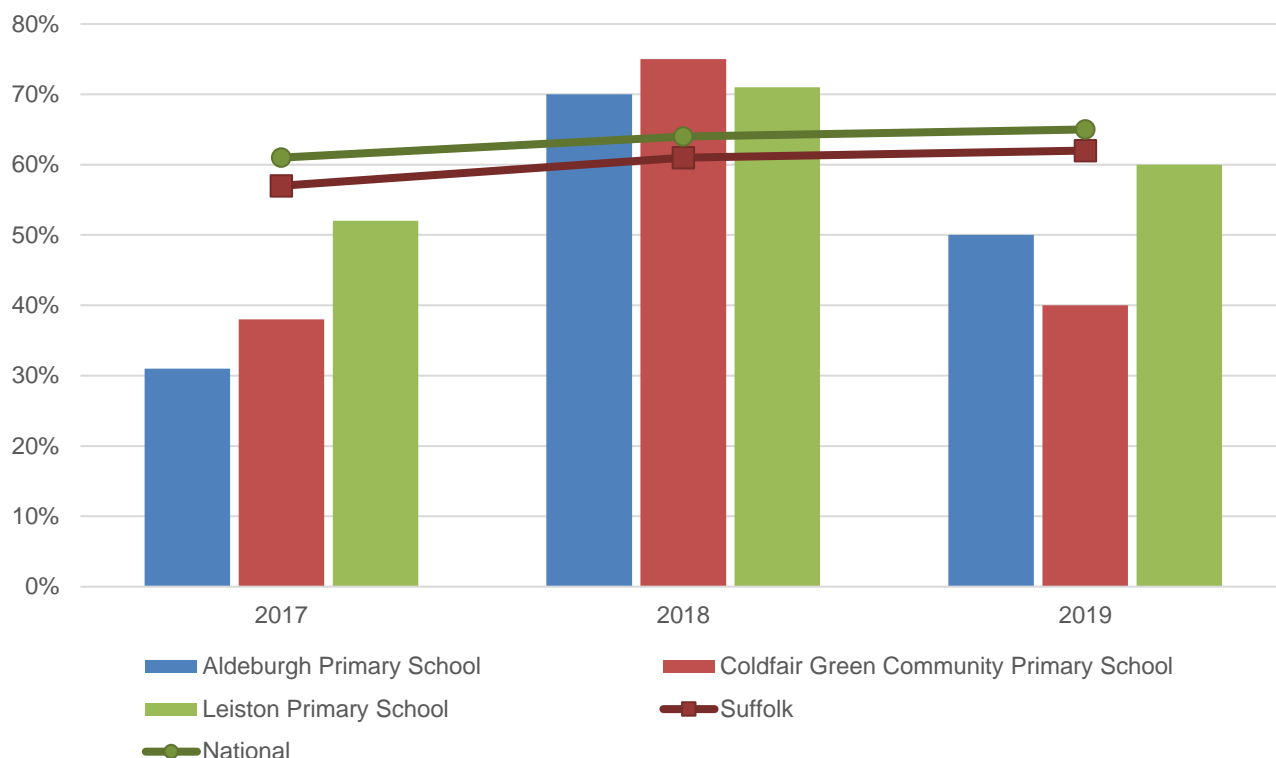
% pupils achieving Good Level of Development (GLD)



- Foundation Stage attainment at schools in Aldeburgh and Leiston division has generally been close to or above the national average.
- Aldeburgh Primary School has seen consistently above average attainment from 2017 to 2019.
- The percentage of pupils achieving a Good Level of Development at Leiston Primary School has been very close to the national average throughout the period.
- Attainment at Coldfair Green Community Primary School was the highest of any school in the division in 2018, but below the county and national average in 2017 and 2019.

Key Stage 2 (age 11)

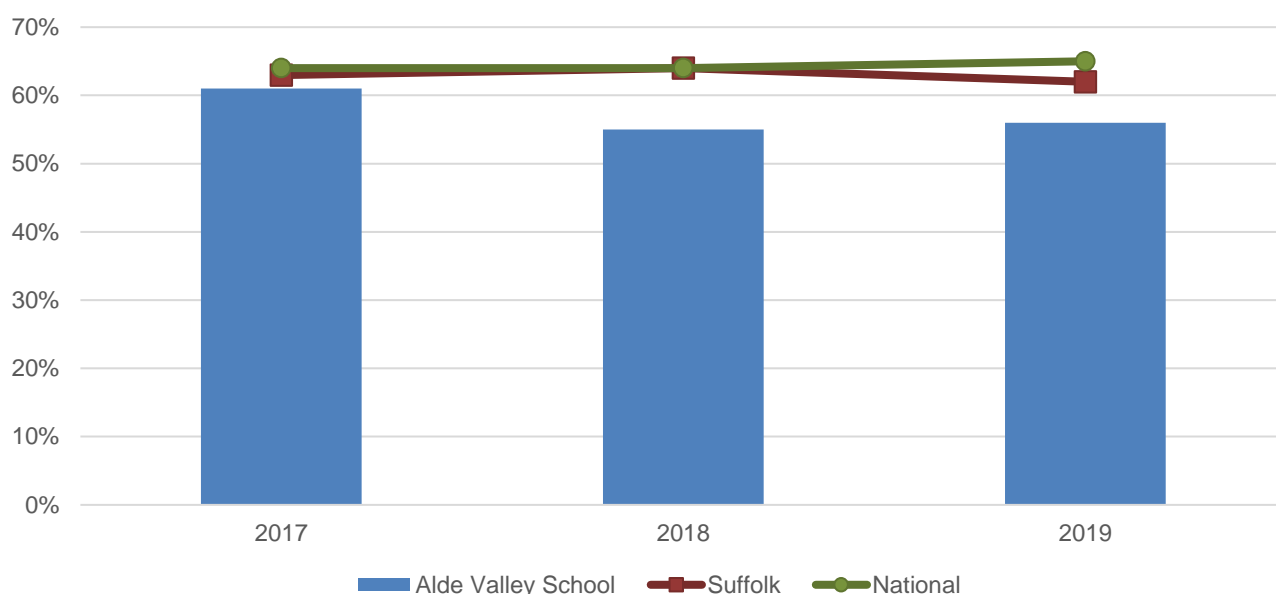
Pupil Achievement in all three subjects, Reading, Writing and Mathematics
(% achieving the Expected Level or better)



- Key Stage 2 attainment at schools in Aldeburgh and Leiston has fluctuated over the last three years, with very strong performance in 2018 not matched in the preceding or subsequent year.
- The percentage of pupils achieving the expected level or better in reading, writing and mathematics at Aldeburgh, Coldfair Green Community and Leiston Primary Schools was above the county and national average in 2018.
- However, in 2017 and 2019, attainment at all three schools was below average, particularly at Aldeburgh and Coldfair Green Community Primary Schools.

Key Stage 4 (GCSE) (age 16)

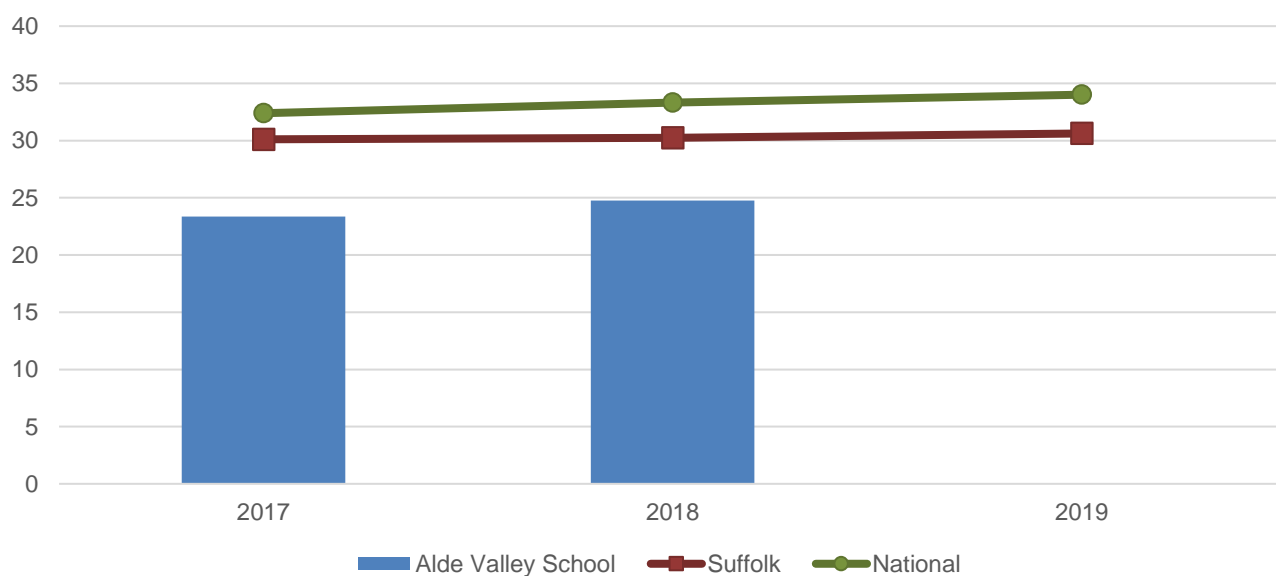
% pupils achieving level 4-9 in English and Mathematics



- Key Stage 4 attainment at Alde Valley School has remained fairly stable over the last three years but consistently below the county and national benchmarks.
- In 2019, 56% of pupils at Alde Valley School achieved level 4-9 in English and mathematics at GCSE, nine percentage points below the national average.
- The gap to the national figure was similar in 2018, but only three percentage points in 2017.

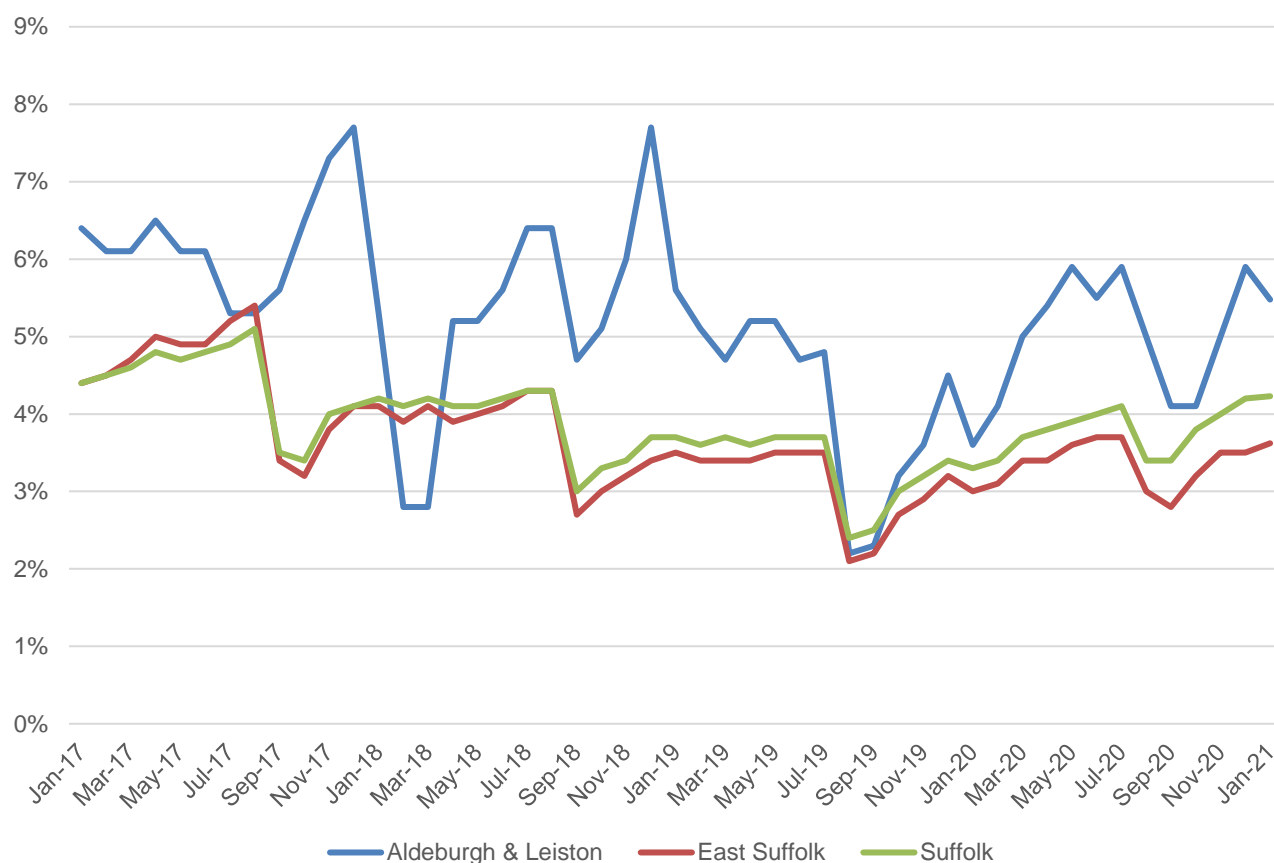
A Level (Key Stage 5) (age 18)

A Level Points entry



- A level attainment at Alde Valley School has been consistently below the county and national average, but there was some improvement in attainment in 2018.
- No data is available for 2019.

NEET % (NOT IN EDUCATION, EMPLOYMENT OR TRAINING)

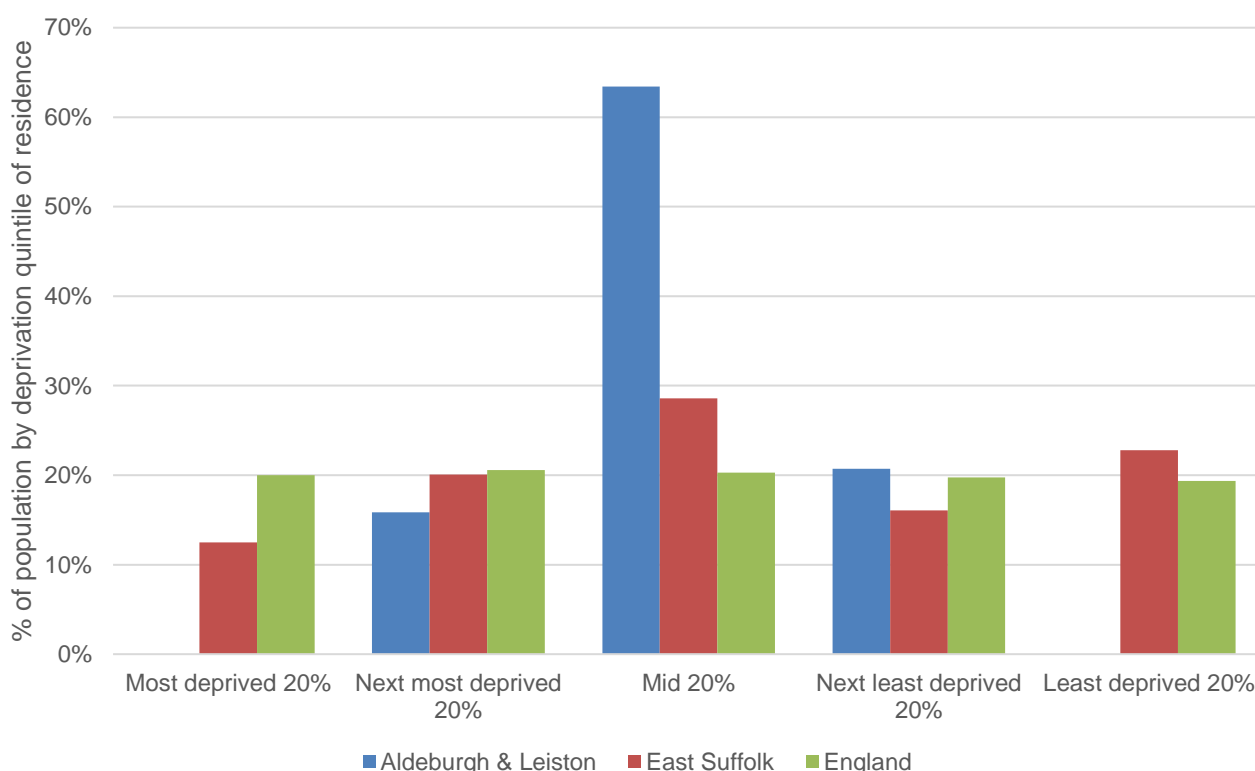


- In January 2021, 5.5% of 16-18-year-olds were classified as NEET in Aldeburgh and Leiston (where current activity is known).
- The NEET level in Aldeburgh and Leiston is consistently higher than district and county averages and is currently around 1.3 percentage points above the figure for Suffolk.

INDEX OF MULTIPLE DEPRIVATION (IMD) 2019 (SEE MAP OVERLEAF)

The IMD combines a number of indicators, chosen to cover a range of economic, social and housing issues, into a single deprivation score for each small area in England. This allows each area to be ranked relative to one another according to their level of deprivation. Small areas (Lower Super Output Areas, average population 1,700) are most commonly described as being in 1 of 5 quintile bands. The bottom quintile represents the 20% of areas that are the most deprived in England; these are shaded pale yellow on the map. The top quintile represents the least deprived areas in England and is shaded dark blue.

The Index is widely used to analyse patterns of deprivation, identify areas that would benefit from special initiatives or programmes and as a tool to determine eligibility for specific funding streams.



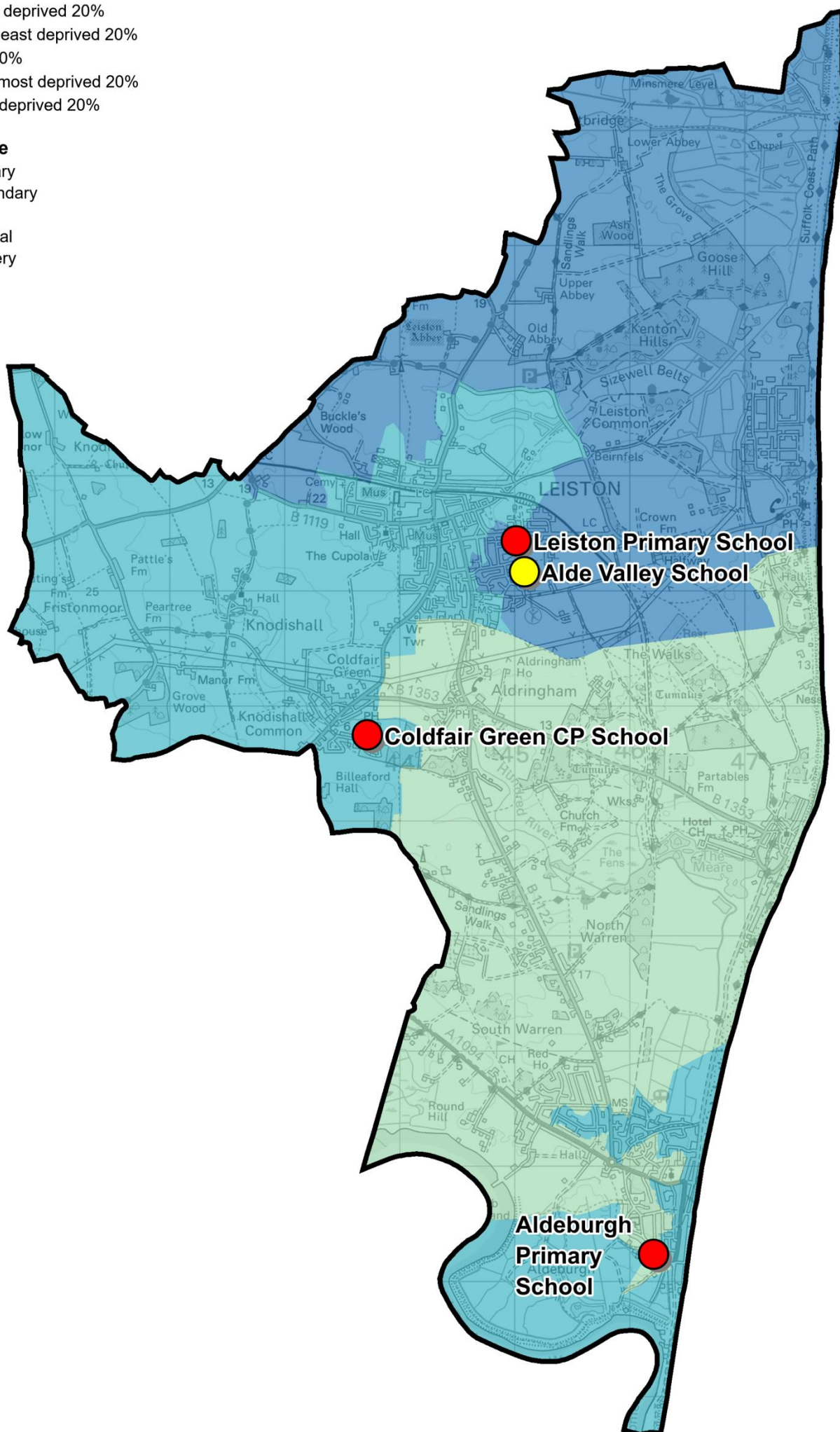
- The IMD 2019 shows that relative deprivation levels in Aldeburgh and Leiston are moderate, with most of the division among the mid-20% of deprived areas in England.
- Of the six Lower Layer Super Output Areas (LSOA) comprising the division, four are ranked in the middle quintile in England (63% of the population of the division lives in these areas, as shown in the chart above), one is in the next least deprived quintile and one is in the second most deprived quintile.

IMD 2019 quintile

- Least deprived 20%
- Next least deprived 20%
- Mid 20%
- Next most deprived 20%
- Most deprived 20%

School Type

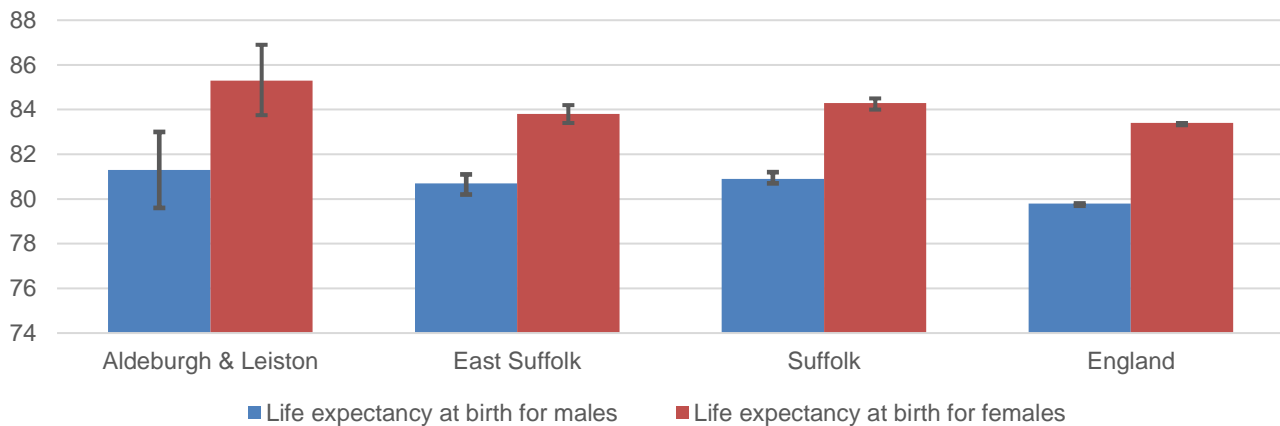
- Primary
- Secondary
- PRU
- Special
- Nursery



HEALTH

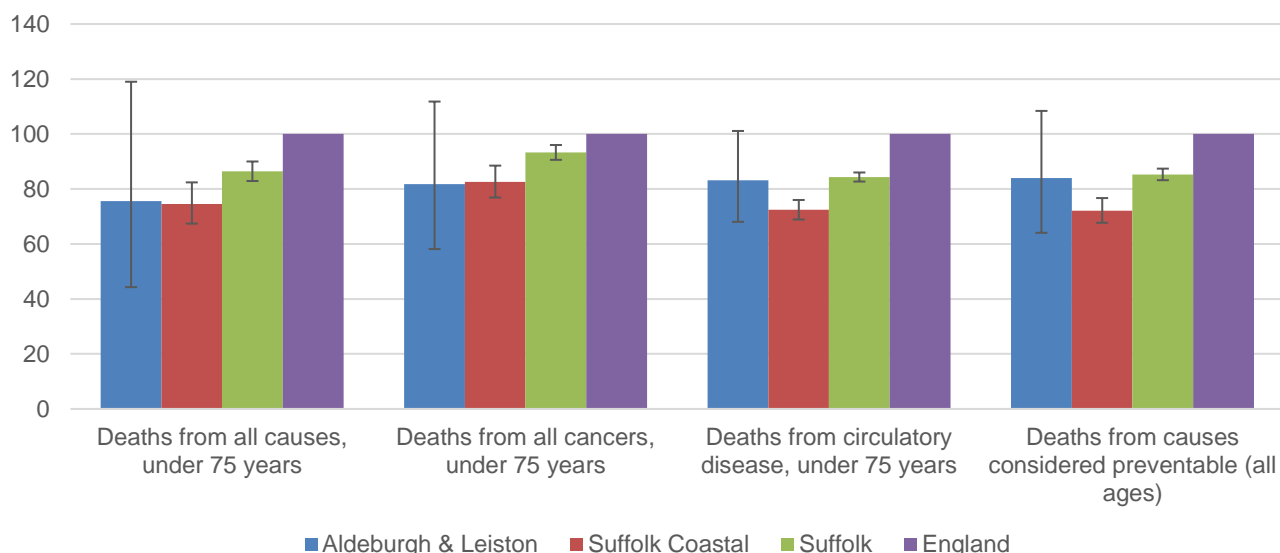
The local data used here is based on relatively small numbers of deaths. The confidence limits provide an indication of the reliability of the data. The 95% confidence intervals utilised on the chart provide a range within which there is 95% chance of the true result lying.

LIFE EXPECTANCY



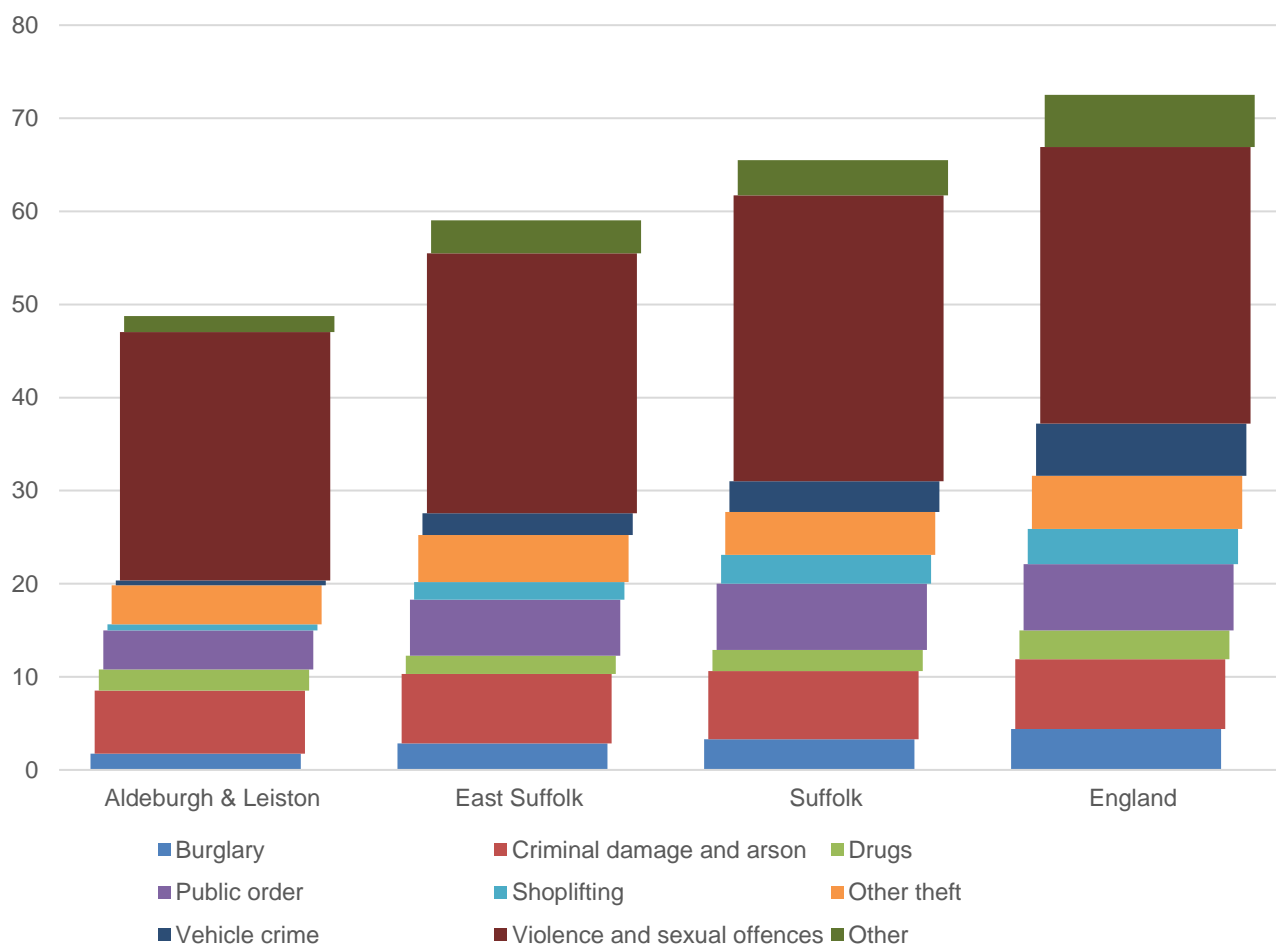
- Estimated life expectancy at birth for both males and females in Aldeburgh and Leiston is above the East Suffolk, Suffolk and England averages.
- The estimated figure for male life expectancy in the division is 81.3 years (80.9 across Suffolk), while for females it is 4 years longer, at 85.3 years (84.3 is the Suffolk average).

DEATHS, UNDER 75 YEARS, STANDARDISED MORTALITY RATIO



- The standardised mortality ratio data shown here means that for every 100 early deaths from all causes across England as a whole, there are an estimated 76 comparable deaths in Aldeburgh and Leiston.
- This is similar to the East Suffolk average and below the county and national level; a similar picture to the data on early deaths from all cancers.
- Early deaths from circulatory disease and deaths from causes considered preventable across all ages in Aldeburgh and Leiston occur at a similar rate to the Suffolk average.
- It should be noted that the confidence intervals around these data are particularly wide due to the small number of deaths at the local level.

CRIME & COMMUNITY SAFETY



- Aldeburgh and Leiston has a lower rate of crime than the district, county and national average.
- In the year to the end of January 2021, there were just under 49 recorded crimes per 1,000 residents in Aldeburgh and Leiston compared to 59 in East Suffolk and 66 across the county as a whole.
- Violence and sexual offences accounted for more than half of all recorded crimes in the division during this period.
- The rate of drug offences in Aldeburgh and Leiston is marginally higher than the district average, but otherwise all types of crime are recorded at a lower rate than across East Suffolk as a whole.

ADDITIONAL INFORMATION

Parishes in Division

Aldeburgh
 Aldringham cum Thorpe
 Knodishall
 Leiston

DATA SOURCES

Category	Indicator	Source
Demographic Profile	Quinary population table 2019	ONS 2019 mid-year population estimates
	Population pyramid 2019	ONS 2019 mid-year population estimates
	Ethnicity 2011	ONS 2011 Census
Economy	Employment by broad industrial sector 2019	ONS Business Register and Employment Survey via NOMIS
Labour market	Claimant count: The number of people claiming Jobseeker's Allowance plus those who claim Universal Credit who are out of work (% 16-64 population) January 2018- February 2021	DWP via NOMIS
Education	School information and attainment 2017-2019	Suffolk County Council
	% 16-18-year-olds NEET (Not in Employment, Education or Training) 2017-2021	Suffolk County Council via the Suffolk Observatory
Deprivation	Index of Multiple Deprivation 2019	Ministry for Housing, Communities and Local Government
Health	Life expectancy at birth 2013-2017	Public Health England
Health	Standardised mortality ratio for deaths from all causes, cancer and circulatory disease, (aged under 75), and death from causes considered preventable (all ages), 2013-2017. The standardised mortality ratio is the ratio of observed deaths in the study group to expected deaths in the general population.	Public Health England
Community Safety	Recorded crime rate per 1,000 resident population February 2020 to January 2021	Data.police.uk via the Suffolk Observatory

For more data and information about Aldeburgh and Leiston Electoral Division, see the Suffolk Observatory www.suffolkobservatory.info

