

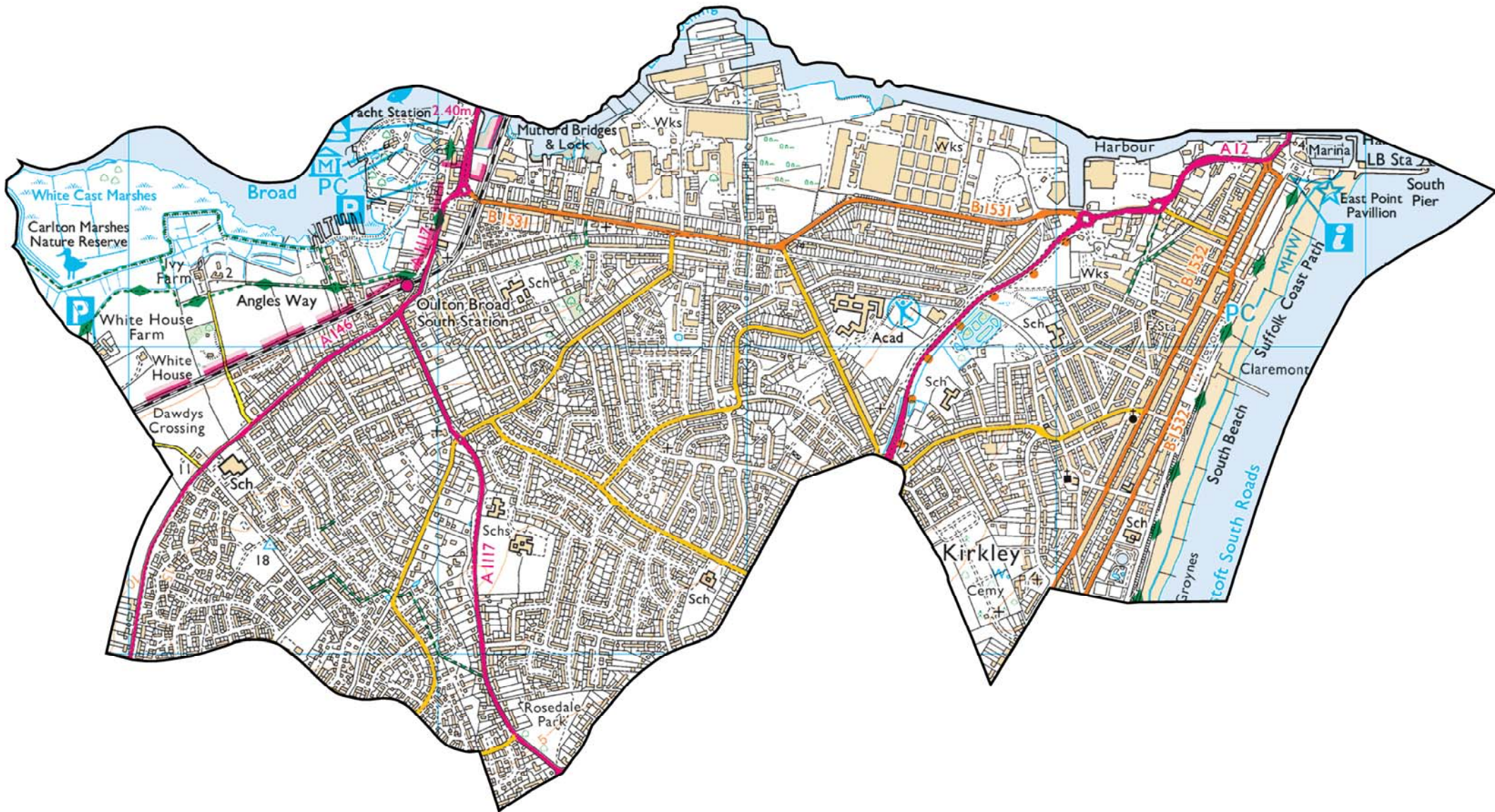
# LOWESTOFT

# SOUTH

**ELECTORAL DIVISION PROFILE 2017**

This Division comprises Carlton, Kirkley and Whitton wards

[www.suffolkobservatory.info](http://www.suffolkobservatory.info)



## **CONTENTS**

- Demographic Profile: Age & Ethnicity
- Economy and Labour Market
- Schools & NEET
- Index of Multiple Deprivation
- Health
- Crime & Community Safety
- Additional Information
- Data Sources

## ELECTORAL DIVISION PROFILES: AN INTRODUCTION

These profiles have been produced to support elected members, constituents and other interested parties in understanding the demographic, economic, social and educational profile of their neighbourhoods. We have used the latest data available at the time of publication.

Much more data is available from national and local sources than is captured here, but it is hoped that the profile will be a useful starting point for discussion, where local knowledge and experience can be used to flesh out and illuminate the information presented here.

The profile can be used to help look at some fundamental questions e.g.

- Does the age profile of the population match or differ from the national profile?
- Is there evidence of the ageing profile of the county in all the wards in the Division or just some?
- How diverse is the community in terms of ethnicity?
- What is the impact of deprivation on families and residents?
- Does there seem to be a link between deprivation and school performance?
- What is the breakdown of employment sectors in the area?
- Is it a relatively healthy area compared to the rest of the district or county?
- What sort of crime is prevalent in the community?

A vast amount of additional data is available on the **Suffolk Observatory**

[www.suffolkobservatory.info](http://www.suffolkobservatory.info)

The Suffolk Observatory is a free online resource that contains all Suffolk's vital statistics; it is the one-stop-shop for information and intelligence about Suffolk. Through data, reports and profiles, the Suffolk Observatory provides a comprehensive picture of the County. It is a great source for useful facts and figures that can be used for writing reports and presentations, informing strategic and business planning, preparing funding applications or supporting academic research. Data is presented around the key themes of education and skills, economy and employment, health and care, population, deprivation, housing, environment, transport and travel and crime. All areas of the county are covered, right down to district, ward and parish level, with information easily accessible in a variety of formats. You can also build your own reports by different themes and topics.

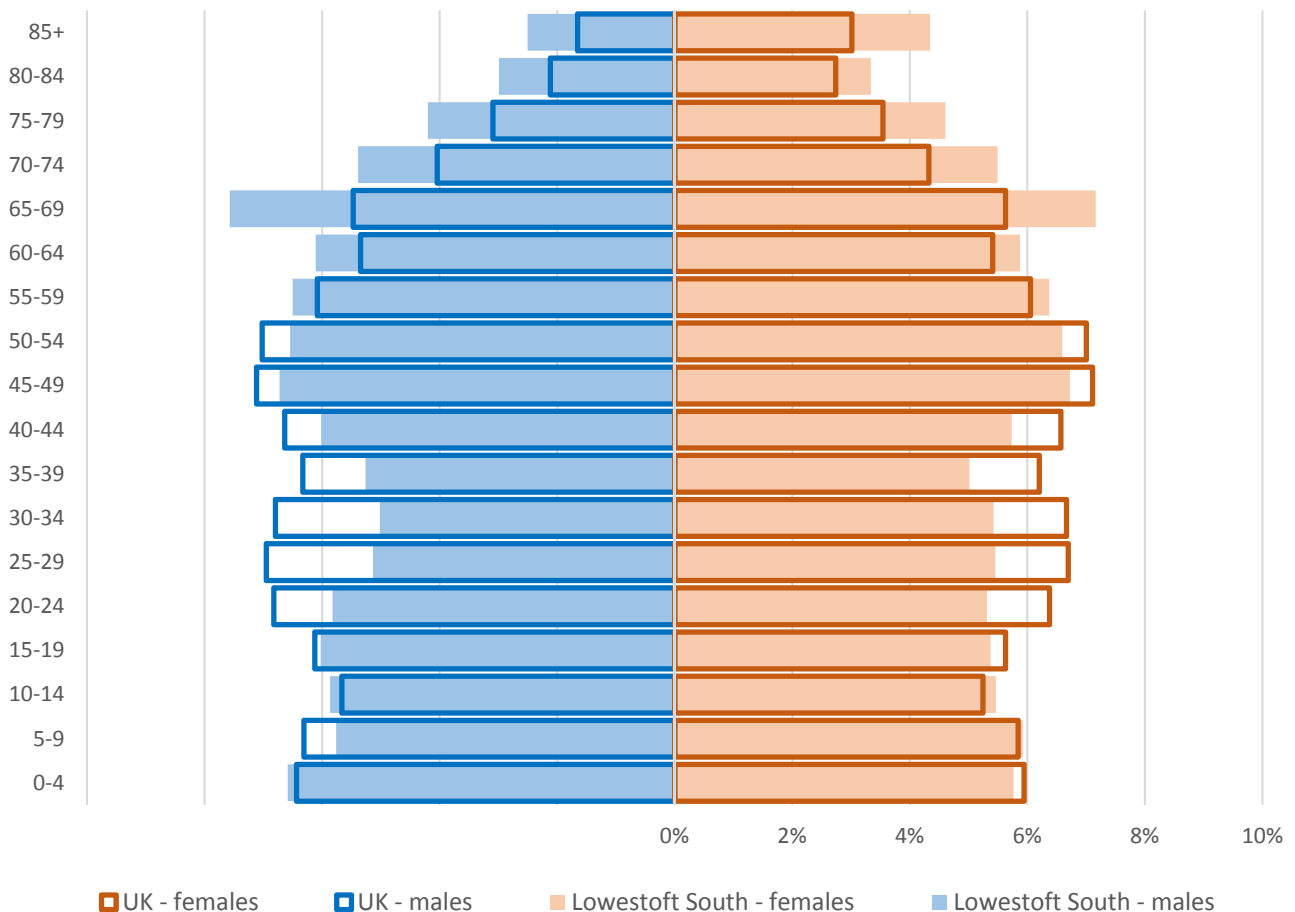
### Technical Notes:

1. Where Electoral Divisions do not exactly match ward boundaries, we have adopted a "best fit" approach to produce a dataset.
2. District, county and national level data is provided where possible to provide a context for comparisons.

# DEMOGRAPHIC PROFILE - AGE

In mid-2015, the population of Lowestoft South stood at 19,438, an increase of 0.7% since the 2011 Census. The age structure of the component wards and the division as a whole is set out below.

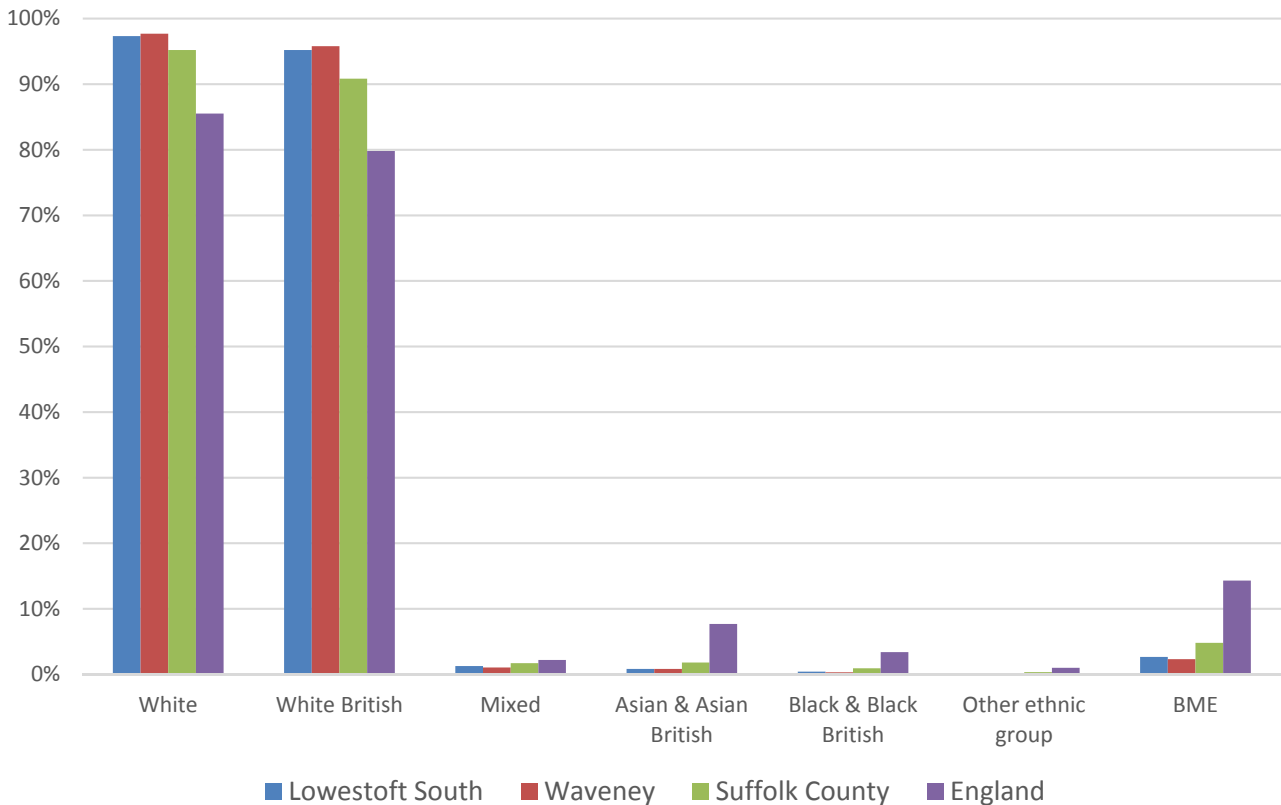
	Lowestoft South Division	Carlton	Kirkley	Whitton
<b>All Ages</b>	<b>19,438</b>	4,570	7,471	7,397
<b>0-4</b>	<b>1,198</b>	268	481	449
<b>5-9</b>	<b>1,136</b>	267	443	426
<b>10-14</b>	<b>1,100</b>	260	451	389
<b>15-19</b>	<b>1,106</b>	264	443	399
<b>20-24</b>	<b>1,081</b>	220	503	358
<b>25-29</b>	<b>1,030</b>	212	462	356
<b>30-34</b>	<b>1,016</b>	243	438	335
<b>35-39</b>	<b>998</b>	223	437	338
<b>40-44</b>	<b>1,141</b>	292	457	392
<b>45-49</b>	<b>1,307</b>	330	547	430
<b>50-54</b>	<b>1,277</b>	319	515	443
<b>55-59</b>	<b>1,251</b>	267	547	437
<b>60-64</b>	<b>1,164</b>	328	384	452
<b>65-69</b>	<b>1,431</b>	379	421	631
<b>70-74</b>	<b>1,058</b>	227	296	535
<b>75-79</b>	<b>857</b>	201	223	433
<b>80-84</b>	<b>616</b>	124	185	307
<b>85+</b>	<b>671</b>	146	238	287





- The age pyramid for Lowestoft South shows a higher than average proportion of people over the age of 55
- The commonest age group in Lowestoft South is 65-69 year olds
- Like many parts of Suffolk there is a much lower than average number of people of working age, particularly 20-39 year olds

## ETHNICITY

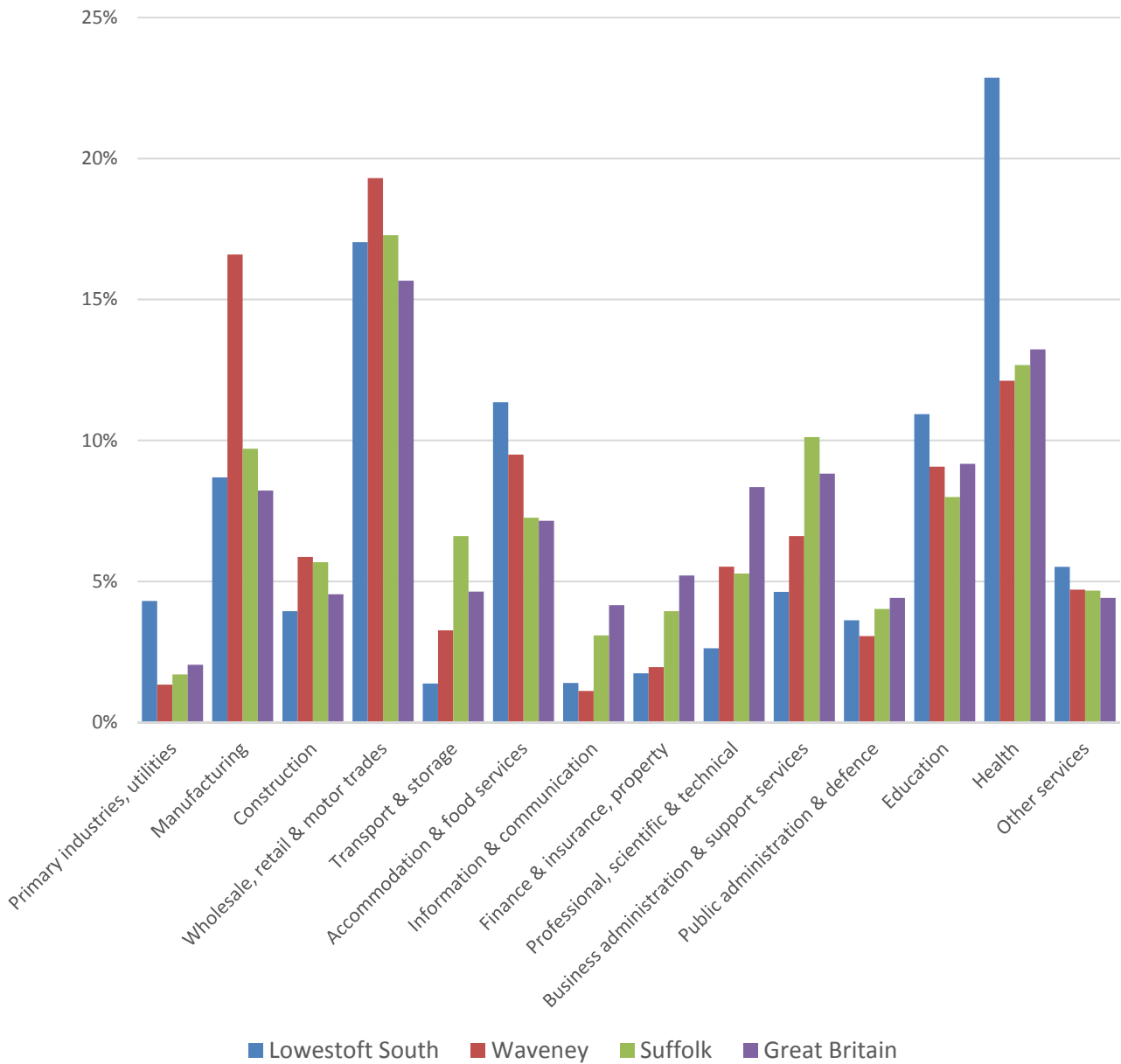


- According to the latest data (2011 Census), 97.3% (18,778) of the population of Lowestoft South are white, slightly above the county average
- There are 516 (2.7%) people of black or minority ethnic origin in the division
- Lowestoft South has a similar diversity profile to Waveney district, and generally lower proportions of minority ethnic groups than Suffolk as a whole

	All people	White		White British		Mixed		Asian and Asian British		Black and Black British		Other Ethnic Group		Black or Minority Ethnic Total	
	Count	Count	%	Count	%	Count	%	Count	%	Count	%	Count	%	Count	%
Lowestoft South	19,294	18,778	97.3	18,365	95.2	248	1.3	159	0.8	81	0.4	28	0.1	516	2.7
Waveney	115,254	112,589	97.7	110,385	95.8	1,215	1.1	959	0.8	369	0.3	122	0.1	2,665	2.3
Suffolk	728,163	693,195	95.2	661,458	90.8	12,472	1.7	13,131	1.8	6,854	0.9	2,511	0.3	34,968	4.8
England & Wales			86.0		80.5		2.2		6.7		2.8		0.4		12.1

# ECONOMY

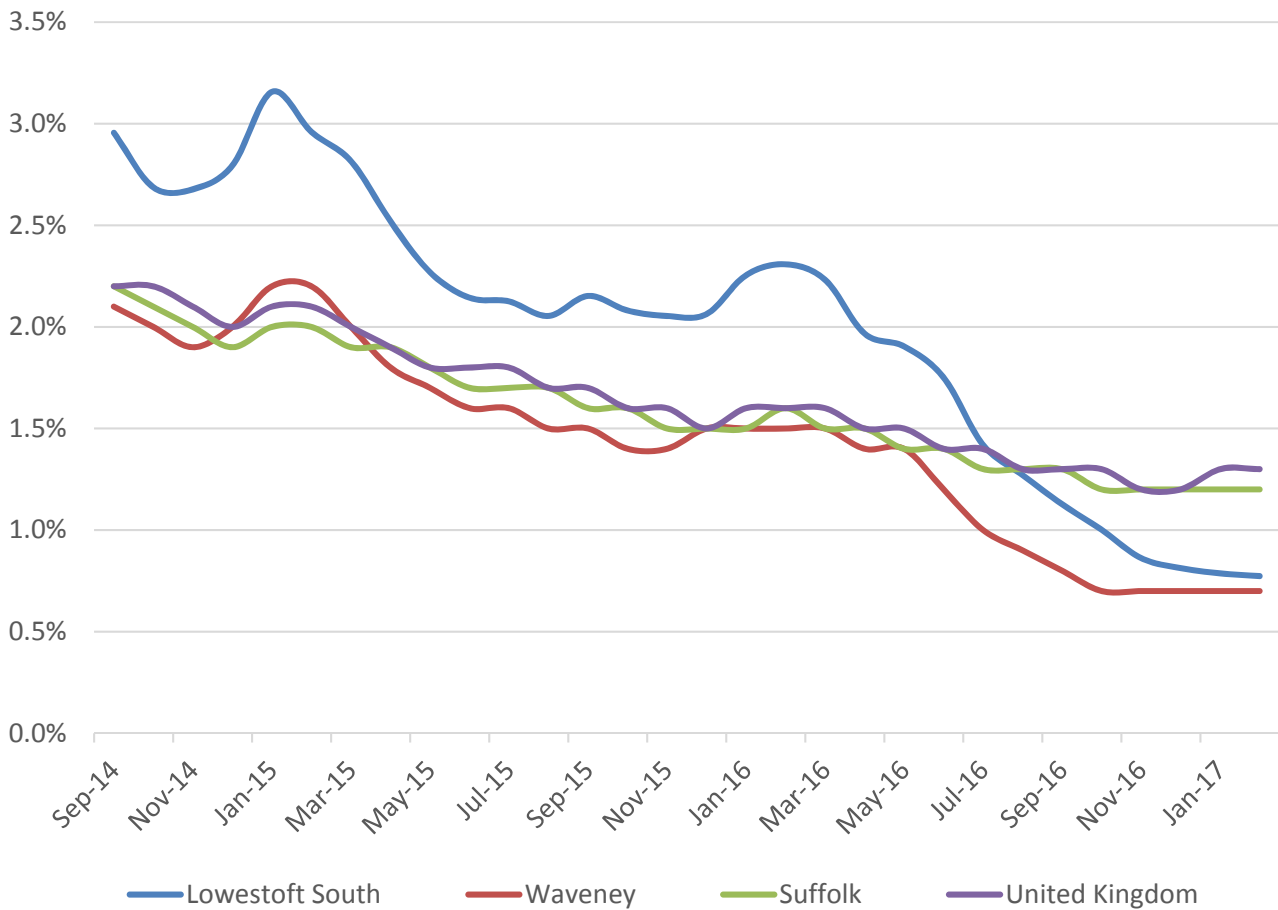
There are 5,000 people employed in Lowestoft South.



- The health sector accounts for more than one in five jobs in Lowestoft South
- Wholesale, retail and motor trades also provides a significant proportion of employment in the division (17%)
- Education, accommodation and food services and manufacturing are also important sectors in Lowestoft South, with over 70% of employment reliant on just these five most important sectors

# LABOUR MARKET

## JOB SEEKERS ALLOWANCE CLAIMANT RATE



- The Job Seekers Allowance claimant rate in Lowestoft South has seen a steady decline over the past three years, following the district trend
- Historically, claimant levels in the division were above the district, county and national average but a sharp fall in the second half of 2016 has seen the local rate drop below the Suffolk and UK level
- In percentage terms, around 0.8% of the working age population (aged 16-64) are claiming JSA in Lowestoft South, compared to 1.2% across Suffolk



# SCHOOLS

## SCHOOL INFORMATION

### Schools in the Division

Name	Phase	Average cohort size at:			Latest Ofsted	Latest Ofsted Date
		Foundation Stage (age 5)	KS2 (age 11)	KS4 (age 16)		
Dell Primary School	Primary	59	49		Not yet inspected as an Academy	
Elm Tree CP School	Primary	58	47			
Phoenix St Peter Academy	Primary	28	41			
Red Oak Primary School	Primary	50	30			
St Mary's RCP School	Primary	28	30			
Westwood Primary School	Primary	26	24		Requires Improvement	17/03/2015
The Attic	PRU				Good	21/09/2016
Warren School	Special	9	8	10	Good	25/09/2012
East Point Academy	Upper			154	Good	11/10/2016

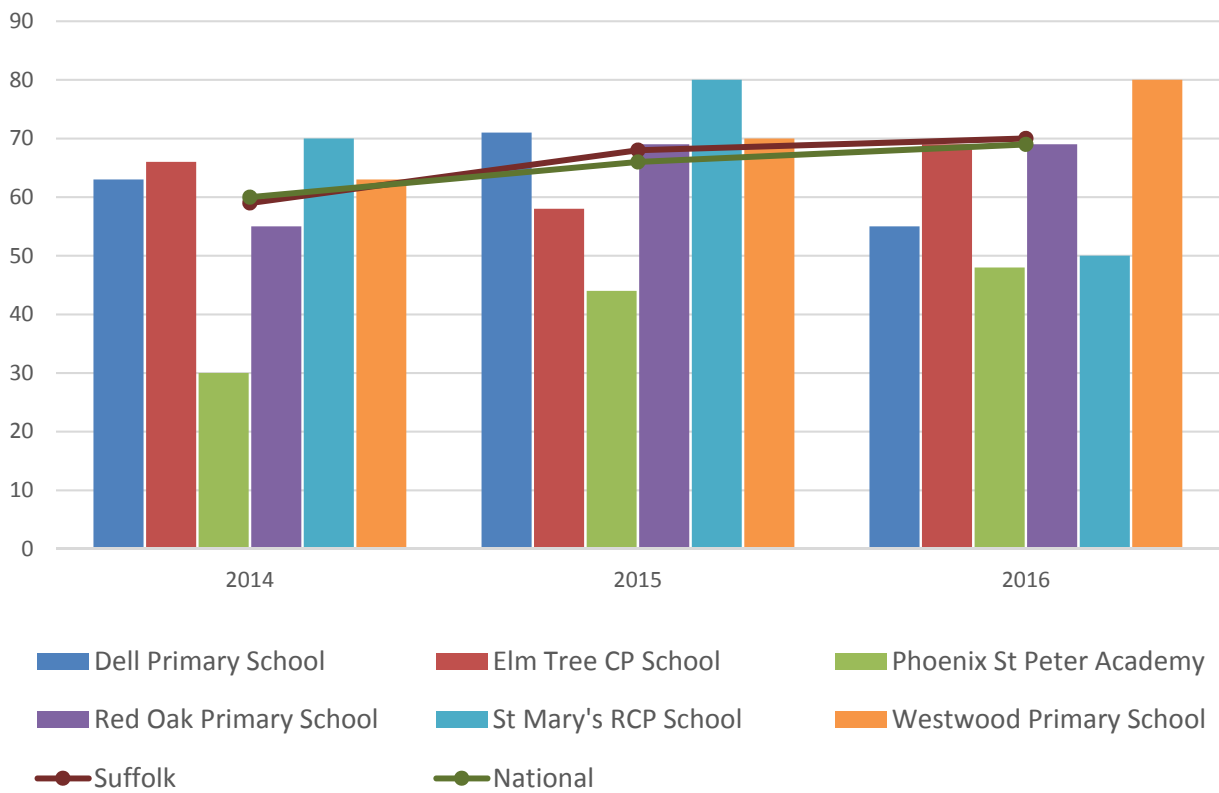
### School Catchment overlaps with the Division

Name	Phase	Average cohort size at:			Latest Ofsted	Latest Ofsted Date
		Foundation Stage (age 5)	KS2 (age 11)	KS4 (age 16)		
Grove Primary School	Primary	43	35		Not yet inspected as an Academy	
Pakefield Primary School	Primary	59	60			
Pakefield School	Upper			118	Good	14/03/2013

# SCHOOL ATTAINMENT

## Foundation Stage Profile (reception)

% pupils achieving Good Level of Development (GLD)

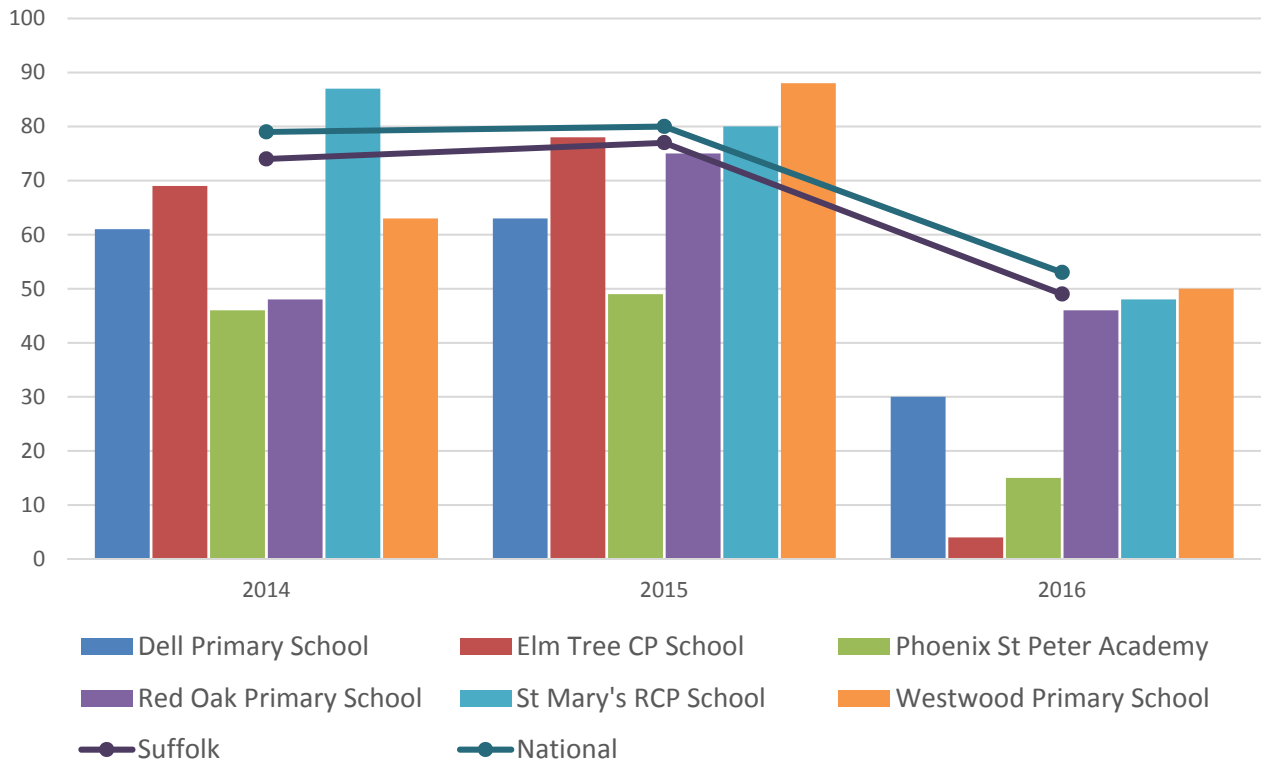


- Foundation Stage attainment at Lowestoft South schools has varied considerably over the past three years
- Westwood Primary is the only school in the division to have consistently seen the percentage of its pupils achieving a Good Level of Development at a higher level than the county and national average from 2014 to 2016
- Average attainment of pupils at Phoenix St Peter Academy has been consistently below average during this period, although there has been a steady improvement in overall performance

## Key Stage 2 (age 11)

Pupil Achievement in all three subjects, Reading, Writing and Mathematics  
(2014–2015 as % Level 4 or better & 2016 % Expected Level or better)

In July 2016, there was a change in the way pupil achievement is measured at the end of KS2. Prior to 2016, pupils received National Curriculum Level grades for English and Maths, with L4 being the expected level at the end of Key Stage 2. In 2016 the measure became a scaled score and shows whether or not a pupil has achieved the national standard for that subject.

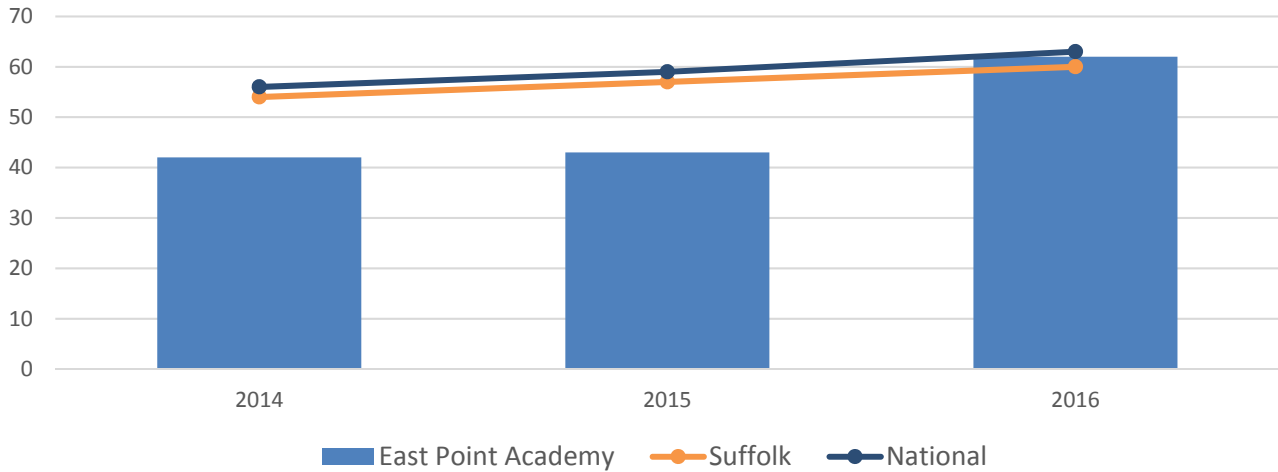


- Key Stage 2 attainment at Lowestoft South schools has also varied considerably over the past three years, with no school seeing attainment above the county average throughout the whole period
- St Mary's RCP School has had the most consistently strong attainment, with results only just dipping below the county average in 2016 following two years of excellent levels of attainment
- KS2 attainment at Dell Primary, Phoenix St Peter Academy and Red Oak Primary Schools has been consistently below average

### GCSE (Key Stage 4) (age 16)

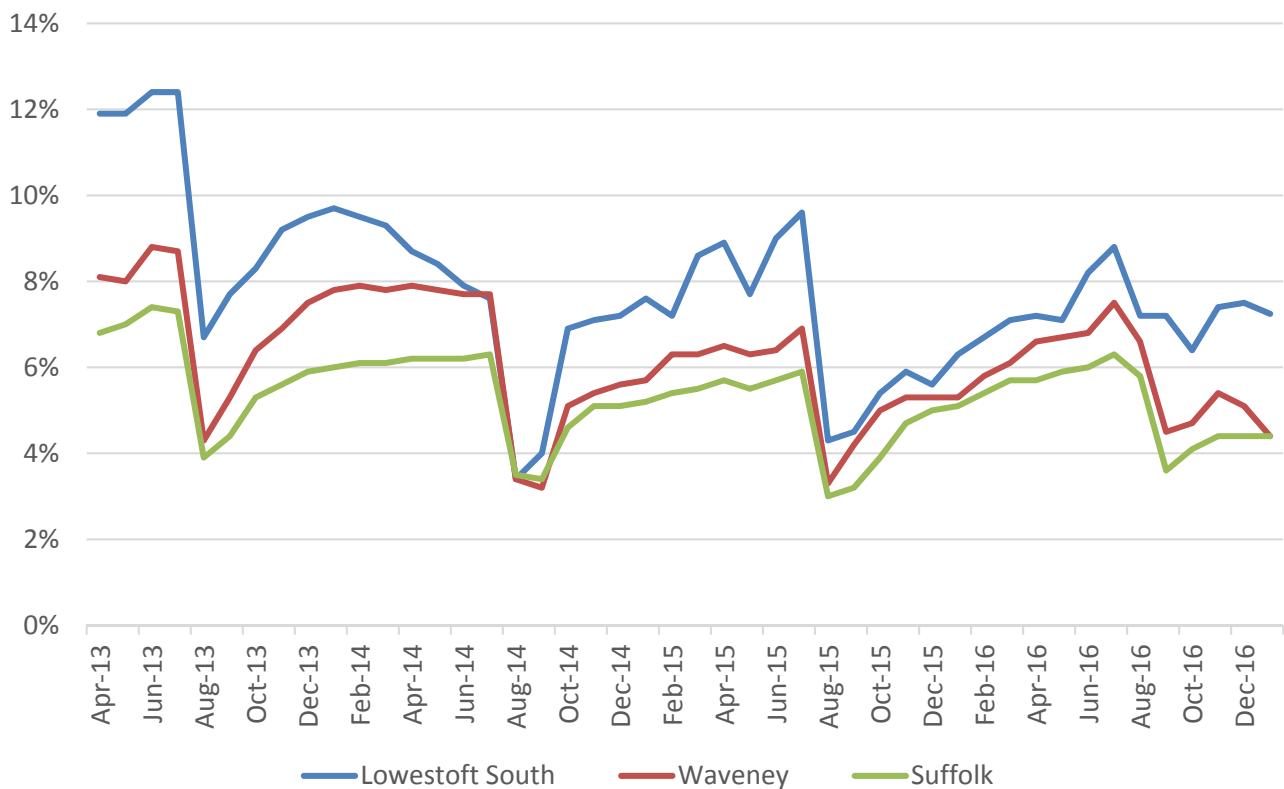
% pupils achieving five or more GCSEs (or equivalent) at A\*-C including English and Mathematics

In July 2016, an additional measure of pupil achievement at Key Stage 4 was introduced but for the purposes of this profile and to demonstrate change over time, we have presented consistent data for the period 2014-2016 using the % pupils achieving five or more GCSEs (or equivalent) at A\*-C including English and Mathematics.



- GCSE attainment at East Point Academy improved markedly in 2016 and is now above the Suffolk average following consistently low levels of attainment in previous years
- In 2016, 62% of students achieved 5+ GCSEs at grade A\*-C compared to 60% in Suffolk and 63% nationally

## NEET % (NOT IN EDUCATION, EMPLOYMENT OR TRAINING)

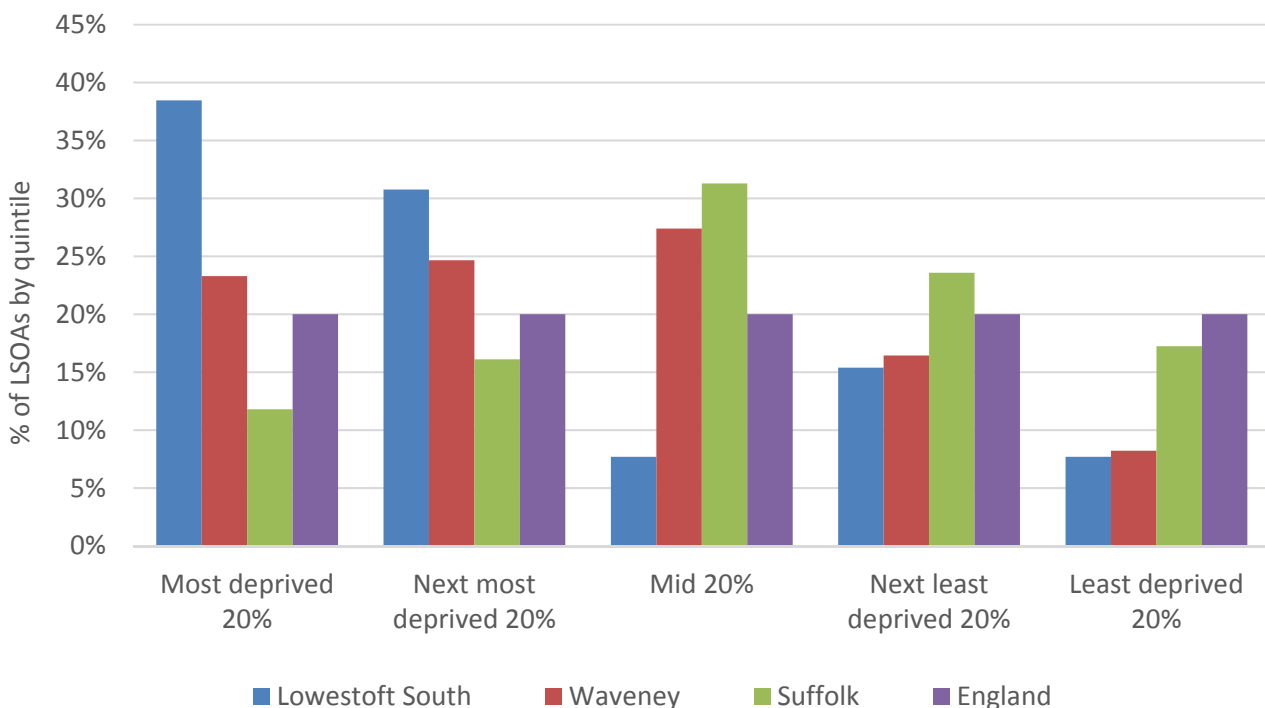


- In January 2017, 7.2% of 16-18 year olds in Lowestoft South were classified as NEET (where current activity is known)
- NEET levels in Lowestoft South are consistently higher than the district and county averages

## INDEX OF MULTIPLE DEPRIVATION (IMD) 2015 (SEE MAP OVERLEAF)

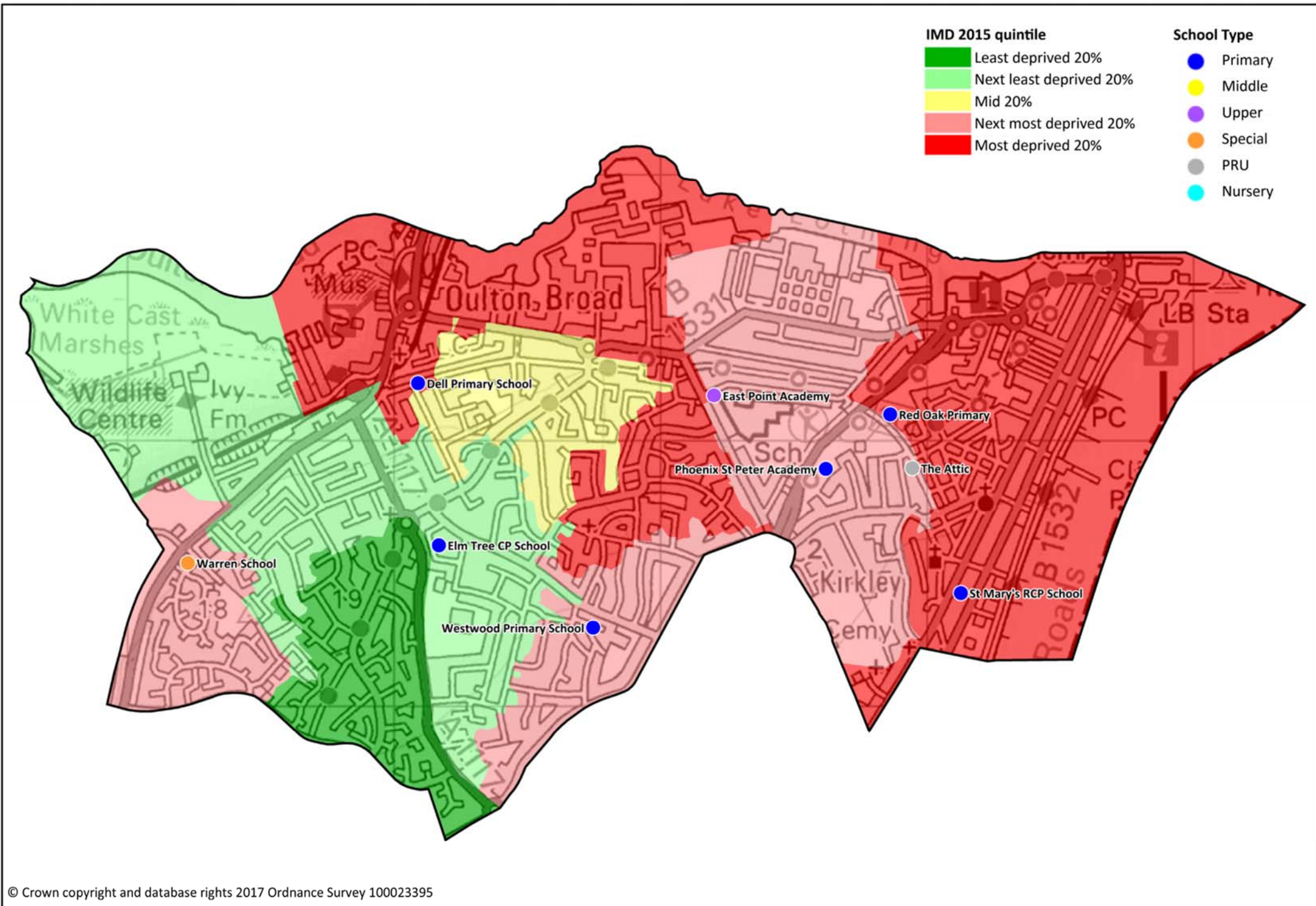
The IMD combines a number of indicators, chosen to cover a range of economic, social and housing issues, into a single deprivation score for each small area in England. This allows each area to be ranked relative to one another according to their level of deprivation. Small areas (Lower Super Output Areas, average population 1,500) are most usually described as being in 1 of 5 quintile bands. The bottom quintile represents the 20% of areas that are the most deprived in the country; these are shaded red on the map. The top quintile represents the least deprived areas in the country, and is shaded green.

The Index is widely used to analyse patterns of deprivation, identify areas that would benefit from special initiatives or programmes and as a tool to determine eligibility for specific funding streams.



- The IMD 2015 shows that deprivation levels in Lowestoft South are very varied, with parts of the division among the least deprived 20% nationally but also in the worst 20%
- Of the thirteen Lower Super Output Areas (LSOA) comprising the division, one is ranked in the top 20% least deprived LSOAs in the country, two are in the next best quintile, one is in the mid quintile, four are in the second most deprived quintile and five are in the most deprived quintile





# HEALTH

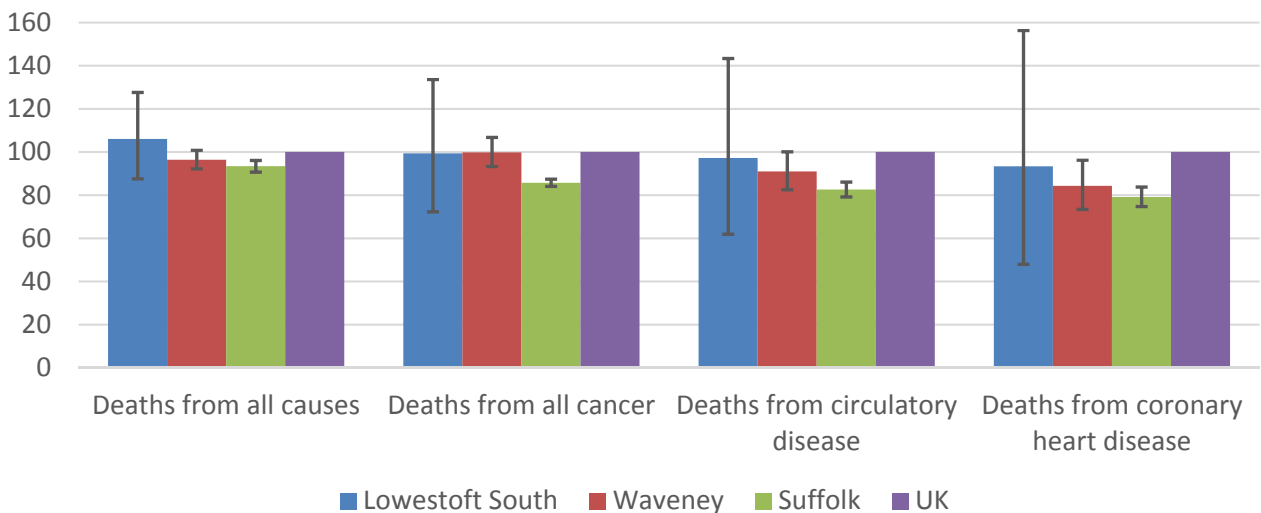
The local data used here is based on relatively small numbers. The confidence limits provide an indication of the reliability of the data. The 95% confidence intervals utilised on the chart provide a range within which there is 95% chance of the true result lying.

## LIFE EXPECTANCY AT BIRTH



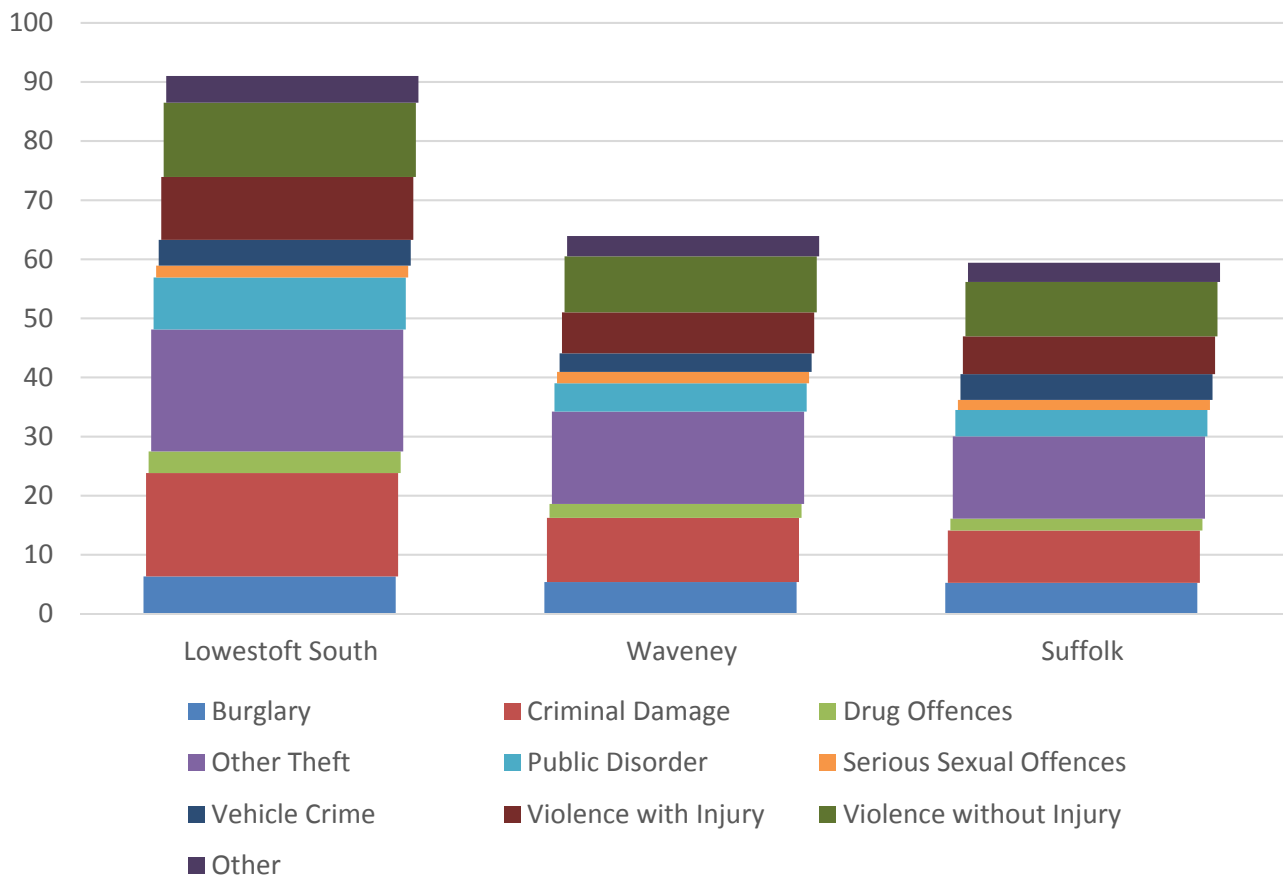
- Life expectancy estimates for Lowestoft South are below the Waveney and Suffolk averages for both males and females
- Life expectancy in the division is very close to the national level for women, but slightly below average for men

## DEATHS, UNDER 75 YEARS, STANDARDISED MORTALITY RATIO



- In Lowestoft South, the rate of deaths from all causes is above the Suffolk average, though there is significant variation between the parameters applied to the data
- The standardised mortality ratio data shown here means that for every 100 early deaths from all causes across the UK as a whole, there are an estimated 106 comparable deaths in Lowestoft South

## CRIME & COMMUNITY SAFETY



- Crime levels are relatively high in Lowestoft South, with 91 crimes per 1,000 residents in 2015, more than the district and county averages of 64 and 59 respectively
- The most commonly committed crimes in the division are “other theft” and criminal damage
- The high rates of violent crime in the division are of concern, with more than 10 instances of violence with injury recorded per 1,000 residents in Lowestoft South compared to 6 across Suffolk as a whole

## ADDITIONAL INFORMATION

### Parishes in Division

Lowestoft

## DATA SOURCES

Category	Indicator	Source
Demographic Profile	Quinary population table 2015	ONS 2015 mid-year population estimates
	Population pyramid 2015	ONS 2015 mid-year population estimates
	Ethnicity 2011	ONS 2011 Census
Economy	Employment by broad industrial sector 2015	ONS Business Register and Employment Survey via NOMIS
Labour market	Job Seekers Allowance Claimant Rate (% 16-64 population) 2014-2017	DWP via NOMIS
Education	School information and attainment 2014-2016	Suffolk County Council
	% 16-18 year olds NEET (Not in Employment, Education or Training) 2013-2017	Suffolk County Council
Deprivation	Index of Multiple Deprivation 2015	Department for Communities and Local Government
Health	Life expectancy at birth 2010-2014	Public Health England
Health	Standardised mortality ratio for deaths from all causes, cancer, circulatory disease and coronary heart disease, aged under 75 2010-2014. The standardised mortality ratio is the ratio of observed deaths in the study group to expected deaths in the general population.	Public Health England
Community Safety	Recorded crime rate per 1,000 resident population 2015	Suffolk Police

For more data and information about Lowestoft South Electoral Division, see the Suffolk Observatory [www.suffolkobservatory.info](http://www.suffolkobservatory.info)

