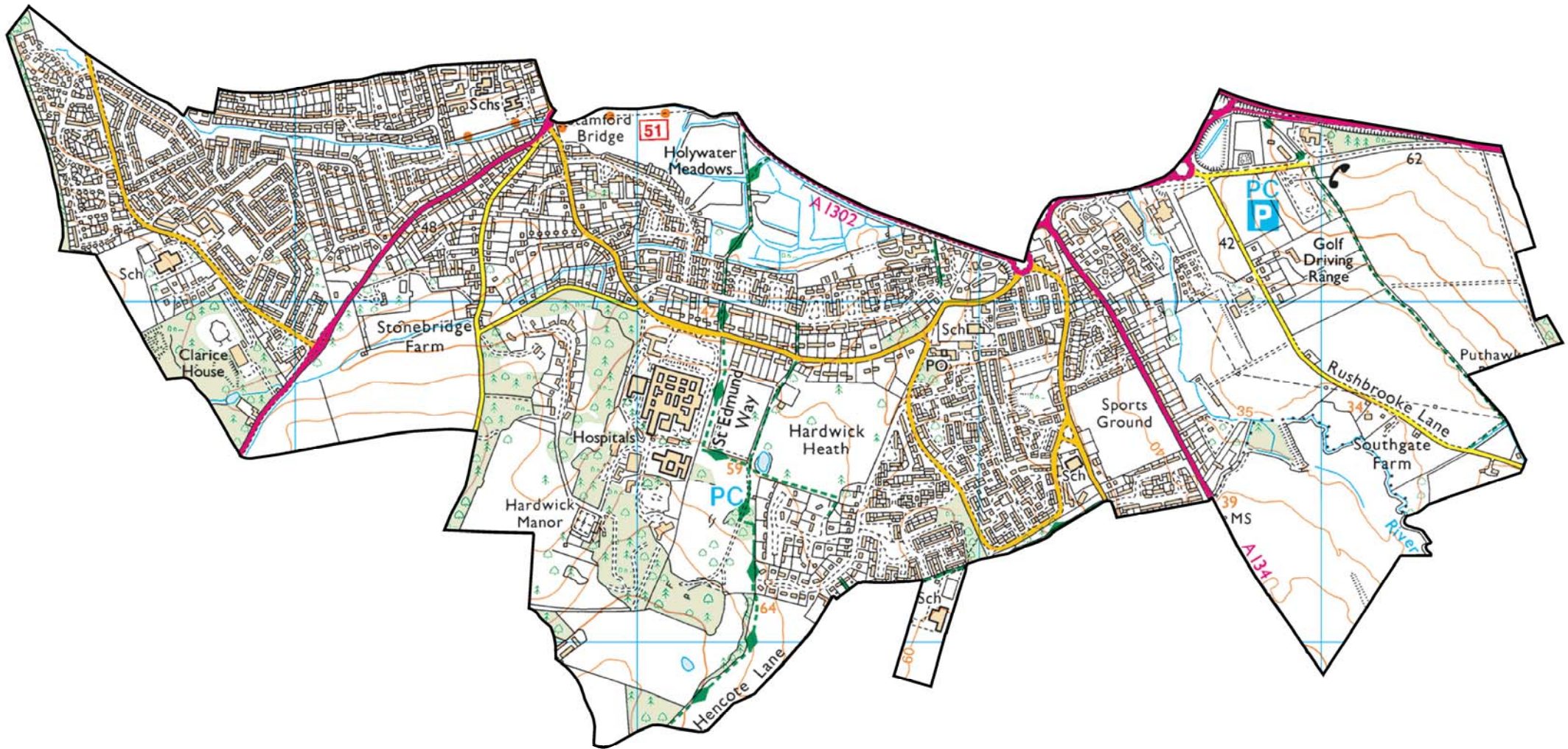


HARDWICK

ELECTORAL DIVISION PROFILE 2017

This Division comprises Southgate and Westgate wards

www.suffolkobservatory.info



CONTENTS

- Demographic Profile: Age & Ethnicity
- Economy and Labour Market
- Schools & NEET
- Index of Multiple Deprivation
- Health
- Crime & Community Safety
- Additional Information
- Data Sources

ELECTORAL DIVISION PROFILES: AN INTRODUCTION

These profiles have been produced to support elected members, constituents and other interested parties in understanding the demographic, economic, social and educational profile of their neighbourhoods. We have used the latest data available at the time of publication.

Much more data is available from national and local sources than is captured here, but it is hoped that the profile will be a useful starting point for discussion, where local knowledge and experience can be used to flesh out and illuminate the information presented here.

The profile can be used to help look at some fundamental questions e.g.

- Does the age profile of the population match or differ from the national profile?
- Is there evidence of the ageing profile of the county in all the wards in the Division or just some?
- How diverse is the community in terms of ethnicity?
- What is the impact of deprivation on families and residents?
- Does there seem to be a link between deprivation and school performance?
- What is the breakdown of employment sectors in the area?
- Is it a relatively healthy area compared to the rest of the district or county?
- What sort of crime is prevalent in the community?

A vast amount of additional data is available on the **Suffolk Observatory**

www.suffolkobservatory.info

The Suffolk Observatory is a free online resource that contains all Suffolk's vital statistics; it is the one-stop-shop for information and intelligence about Suffolk. Through data, reports and profiles, the Suffolk Observatory provides a comprehensive picture of the County. It is a great source for useful facts and figures that can be used for writing reports and presentations, informing strategic and business planning, preparing funding applications or supporting academic research. Data is presented around the key themes of education and skills, economy and employment, health and care, population, deprivation, housing, environment, transport and travel and crime. All areas of the county are covered, right down to district, ward and parish level, with information easily accessible in a variety of formats. You can also build your own reports by different themes and topics.

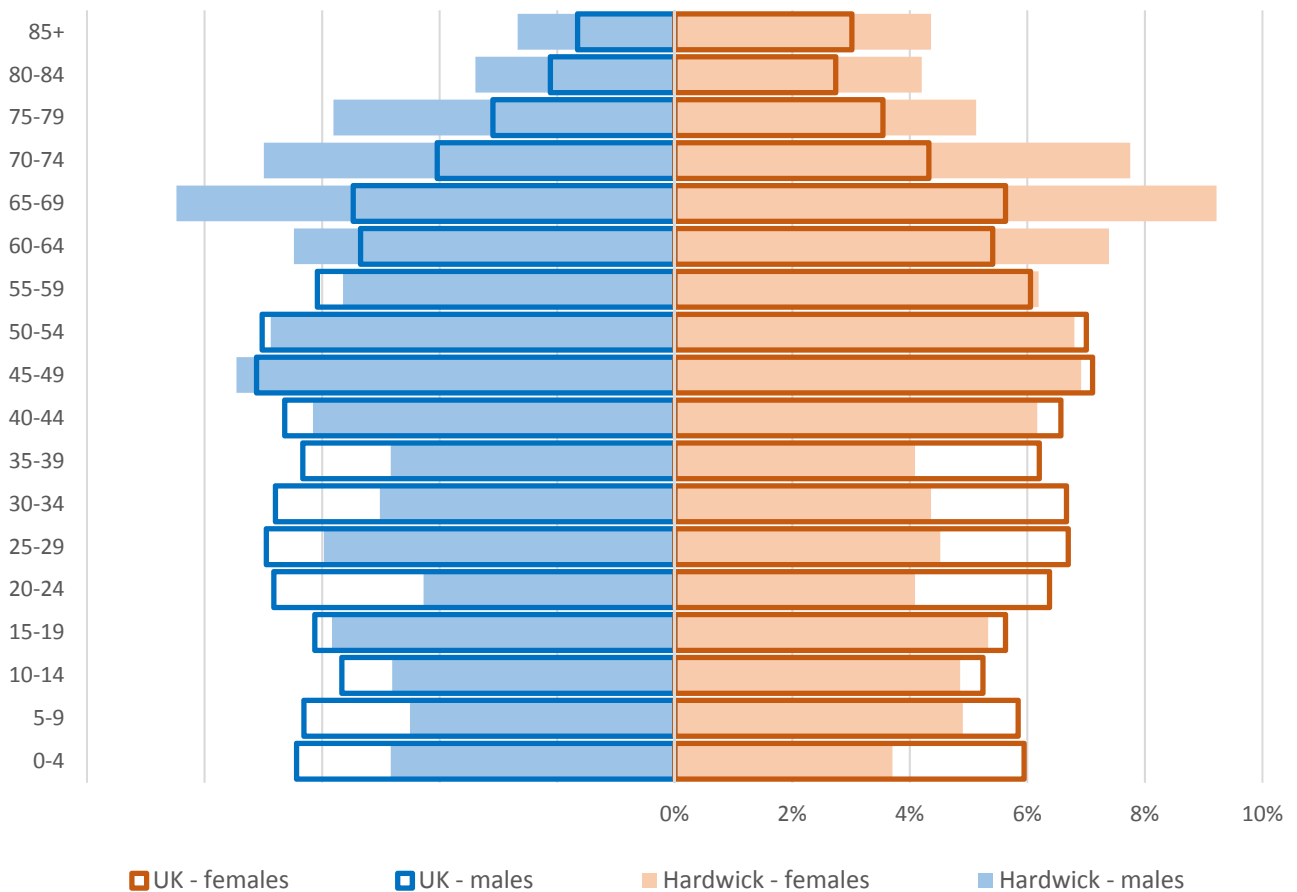
Technical Notes:

1. Where Electoral Divisions do not exactly match ward boundaries, we have adopted a "best fit" approach to produce a dataset.
2. District, county and national level data is provided where possible to provide a context for comparisons.

DEMOGRAPHIC PROFILE - AGE

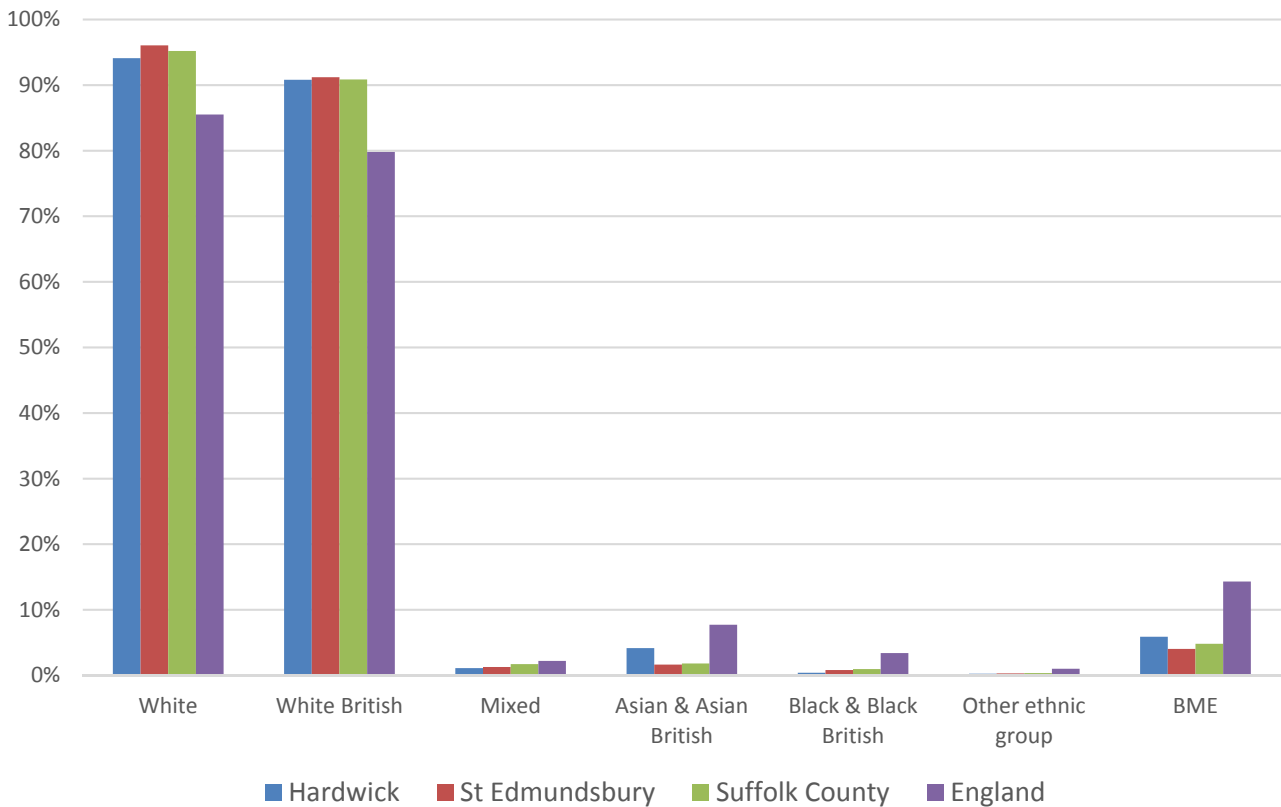
In mid-2015, the population of Hardwick stood at 8,731, almost unchanged since the 2011 Census. The age structure of the component wards and the division as a whole is set out below.

	Hardwick Division	Southgate	Westgate
All Ages	8,731	4,531	4,200
0-4	372	202	170
5-9	411	234	177
10-14	422	229	193
15-19	487	253	234
20-24	365	209	156
25-29	457	265	192
30-34	409	221	188
35-39	389	219	170
40-44	538	288	250
45-49	627	321	306
50-54	597	283	314
55-59	517	268	249
60-64	606	271	335
65-69	773	424	349
70-74	644	302	342
75-79	477	226	251
80-84	332	167	165
85+	308	149	159



- The age pyramid for Hardwick shows a higher than average proportion of people over the age of 45
- The commonest age group in Hardwick is 65-69, followed by 70-74
- There is a much lower than average number of people of working age, particularly under the age of 40

ETHNICITY

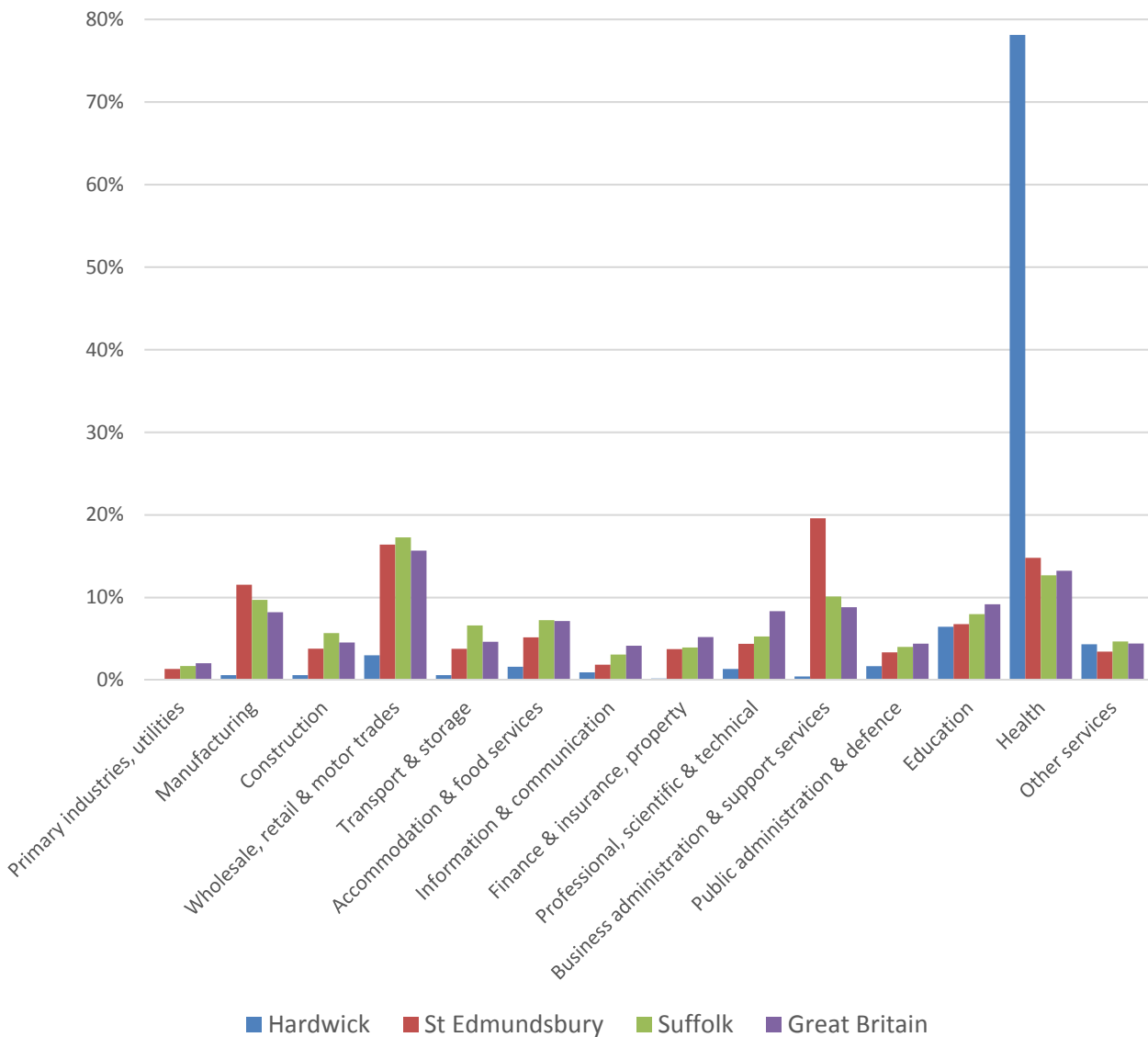


- According to the latest data (2011 Census), 94.1% (8,219) of the population of Hardwick are white, slightly below the rate for St Edmundsbury
- The proportion of people of black or minority ethnic origin, at 5.9% is above the rate for both the borough and the county
- Hardwick has a similar diversity profile to St Edmundsbury and Suffolk, but with generally higher proportions of minority ethnic groups

	All people	White		White British		Mixed		Asian and Asian British		Black and Black British		Other Ethnic Group		Black or Minority Ethnic Total	
	Count	Count	%	Count	%	Count	%	Count	%	Count	%	Count	%	Count	%
Hardwick	8,734	8,219	94.1	7,930	90.8	96	1.1	362	4.1	35	0.4	22	0.3	515	5.9
St Edmundsbury	111,008	106,615	96.0	101,239	91.2	1,404	1.3	1,824	1.6	902	0.8	263	0.2	4,393	4.0
Suffolk	728,163	693,195	95.2	661,458	90.8	12,472	1.7	13,131	1.8	6,854	0.9	2,511	0.3	34,968	4.8
England & Wales			86.0		80.5		2.2		6.7		2.8		0.4		12.1

ECONOMY

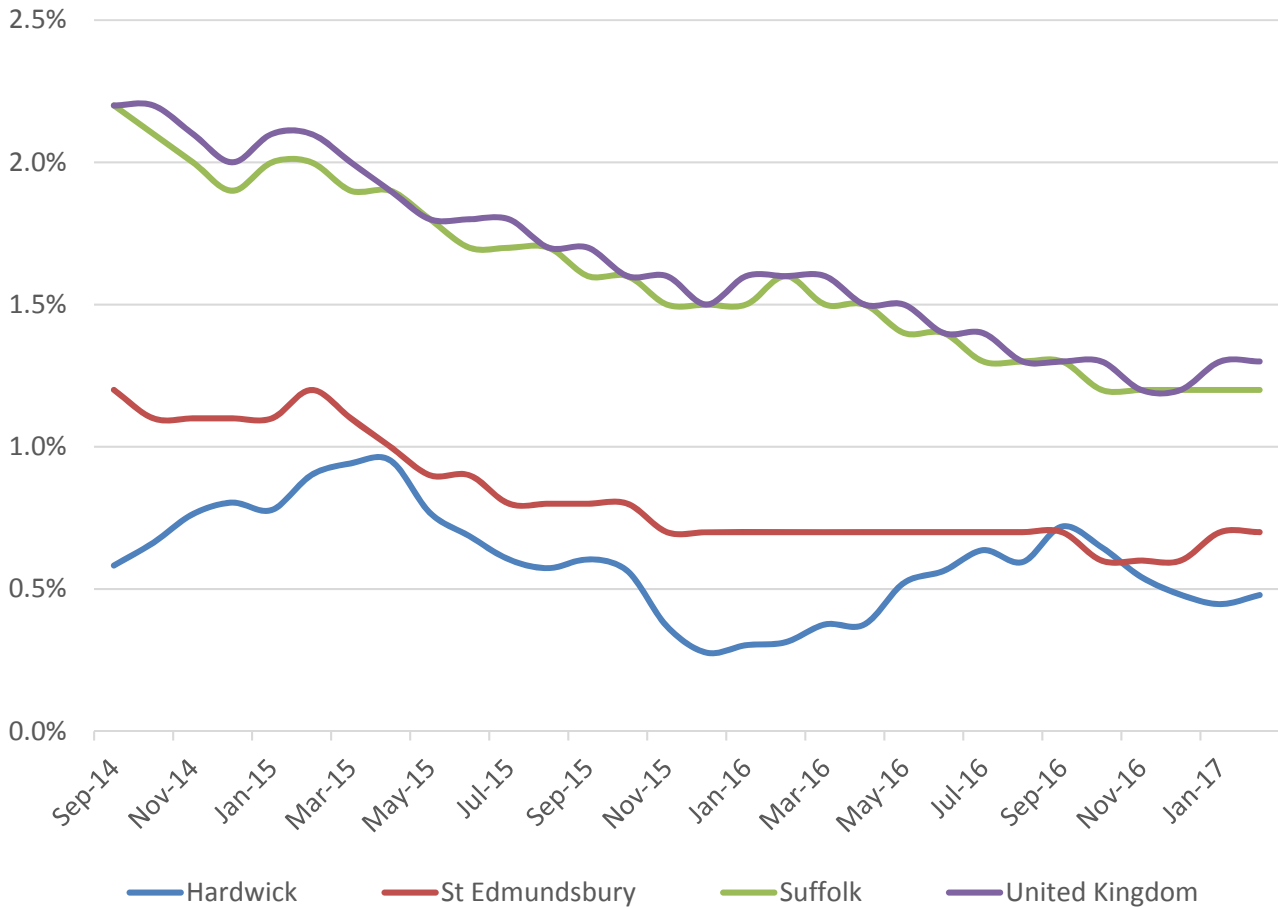
There are 6,000 people employed in Hardwick.



- The key employment sector in Hardwick is health, which provides nearly 80% of jobs in the division
- Health is particularly important as the proportion employed in this sectors is much higher than the national average
- The next largest employment sector is education, where the proportion employed is similar to the borough figure, but lower than Suffolk and nationally

LABOUR MARKET

JOBSEEKERS ALLOWANCE CLAIMANT RATE



- Hardwick has seen fluctuating rates of Job Seekers Allowance claimants since 2014, although the rate has remained below Suffolk and national levels
- There has been a general reduction in claimants in the division over the last three years, in line with county and national trends
- In February 2017, 0.5% of the working age population are claiming JSA. This is below the figure for the borough, and well below that for the county and the UK

SCHOOLS

SCHOOL INFORMATION

Schools in the Division

Name	Phase	Average cohort size at:		Latest Ofsted	Latest Ofsted Date
		Foundation Stage (age 5)	KS2 (age 11)		
Hardwick Primary School	Primary	43		Good	25/06/2013
Westgate CP School	Primary	49		Good	15/03/2016
Horringer Court Middle School	Middle		89	Good	14/06/2016

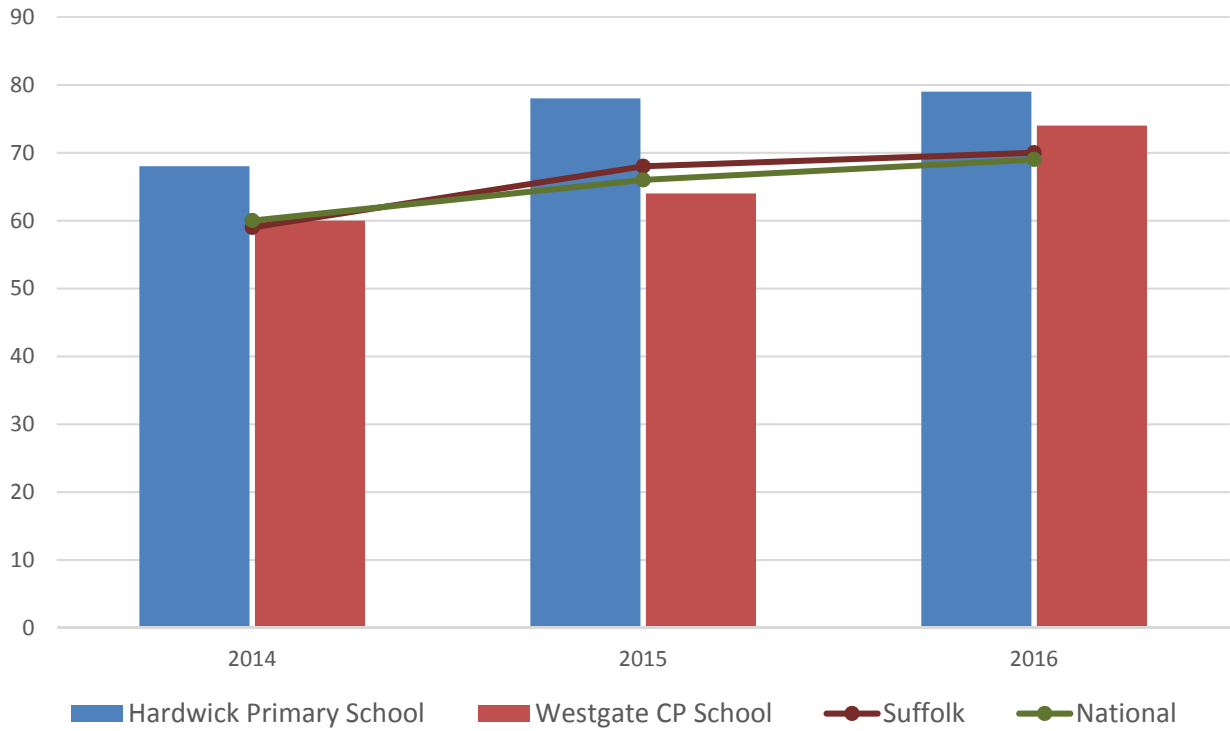
School Catchment overlaps with the Division

Name	Phase	Average cohort size at:			Latest Ofsted	Latest Ofsted Date
		Foundation Stage (age 5)	KS4 (age 16)	KS5 (age 18)		
Guildhall Feoffment CP School	Primary	53			Good	18/05/2016
Sexton's Manor CP School	Primary	29			Good	07/05/2014
King Edward VI CEVC Upper School	Upper		345	174	Good	03/12/2013

SCHOOL ATTAINMENT

Foundation Stage Profile (reception)

% pupils achieving Good Level of Development (GLD)

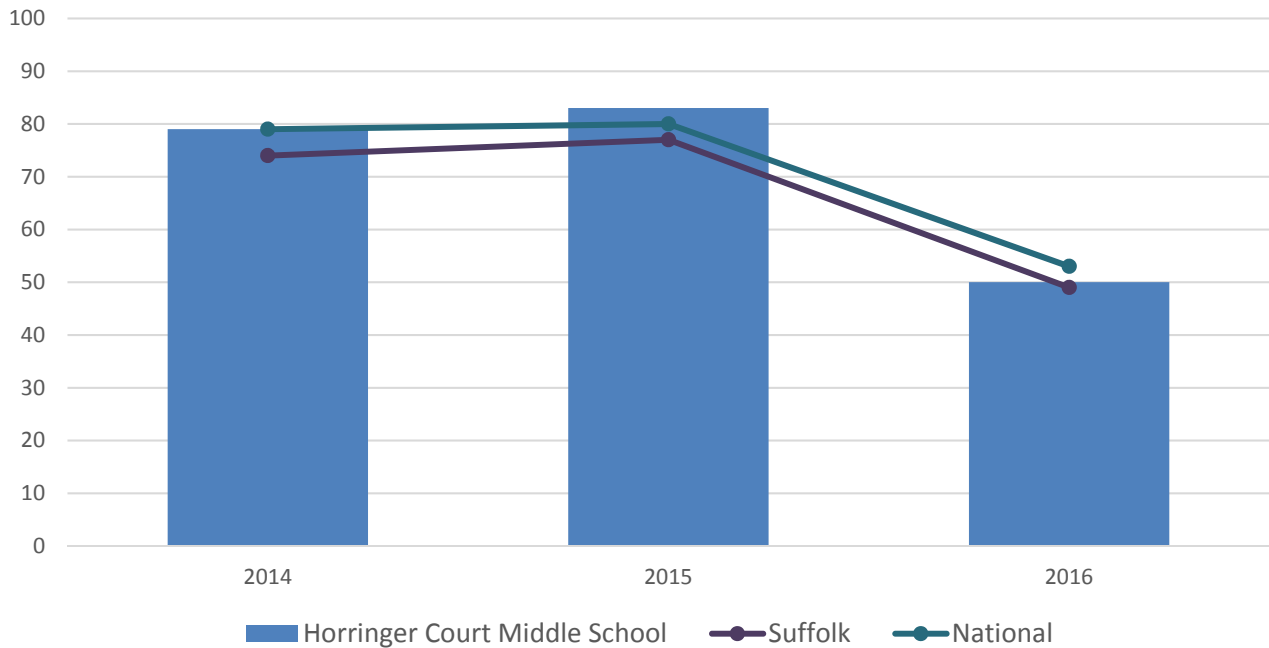


- Foundation Stage attainment at Hardwick Primary School has been consistently above the county and national averages throughout the 2014 to 2016 period
- Attainment at Westgate CP School has improved in each of the past three years, and was at or above the national level in 2014 and 2016

Key Stage 2 (age 11)

Pupil Achievement in all three subjects, Reading, Writing and Mathematics as 2014–2015 % Level 4 or better & 2016 % Expected Level or better

In July 2016, there was a change in the way pupil achievement is measured at the end of KS2. Prior to 2016, pupils received National Curriculum Level grades for English and Maths, with L4 being the expected level at the end of Key Stage 2. In 2016 the measure scaled score and shows whether or not a pupil has achieved the national standard for that subject

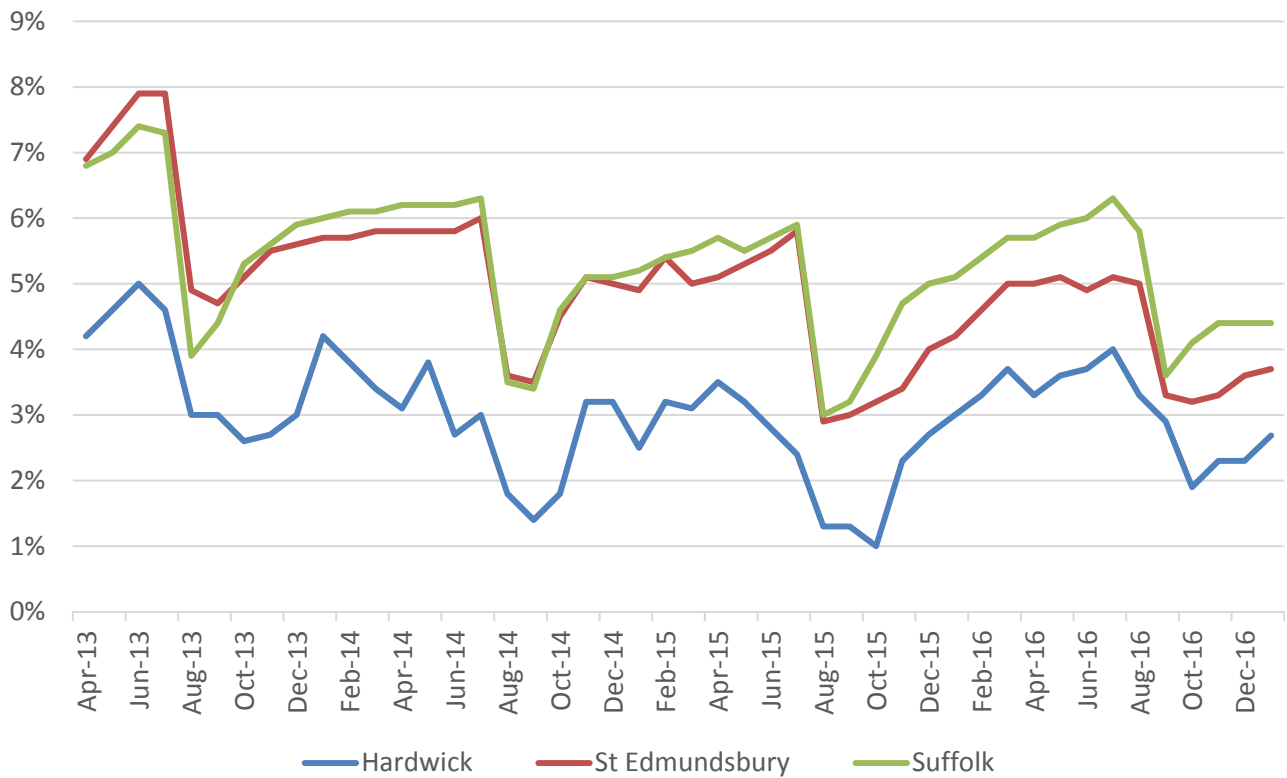


- Key stage 2 attainment at Horringer Court Middle School was above the average for the county and the same as national average in 2014
- Improvement in attainment at the school in 2015 saw results rise above both county and national levels
- In 2016, the school is again above average for the county, but just below the national average

GCSE (Key Stage 4) (age 16)

There are no Upper schools in the Hardwick division

NEET % (NOT IN EDUCATION, EMPLOYMENT OR TRAINING)

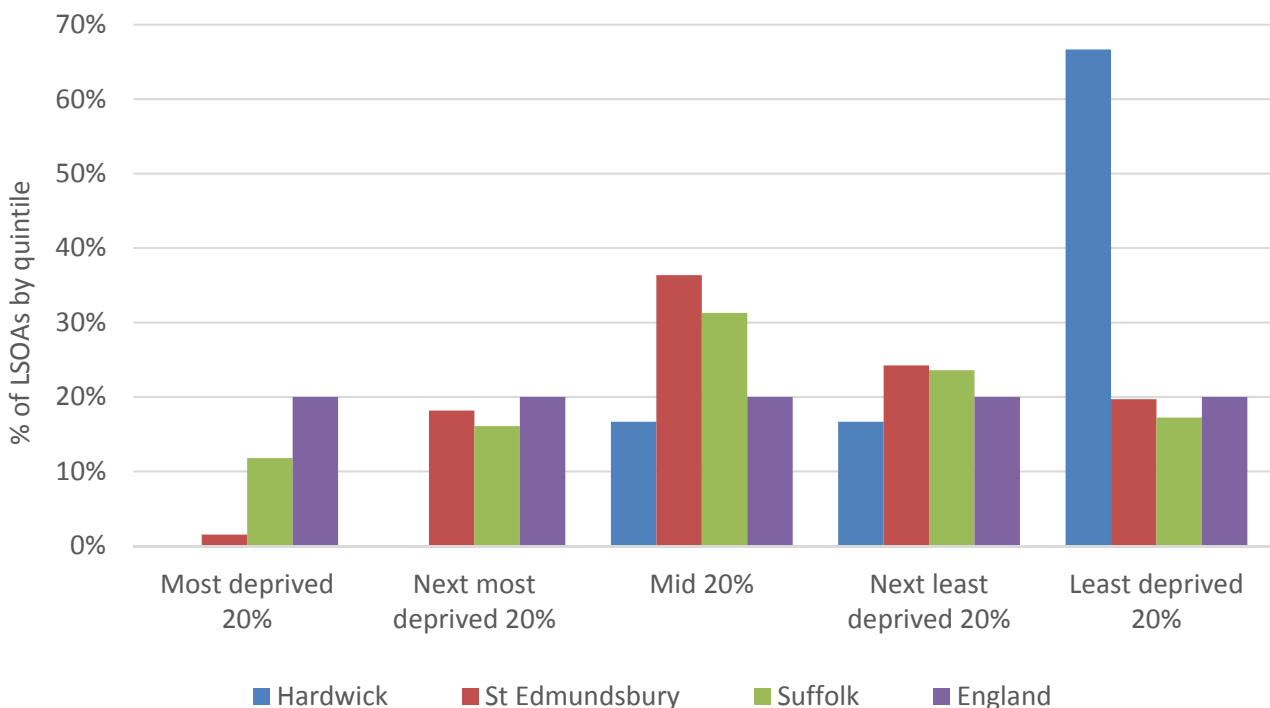


- In January 2017, 2.7% 16-18 year olds were classified as NEET in Hardwick (where current activity is known)
- NEET levels in Hardwick are generally below the borough and national average, and show the same pattern of seasonal variation

INDEX OF MULTIPLE DEPRIVATION (IMD) 2015 (SEE MAP OVERLEAF)

The IMD combines a number of indicators, chosen to cover a range of economic, social and housing issues, into a single deprivation score for each small area in England. This allows each area to be ranked relative to one another according to their level of deprivation. Small areas (Lower Super Output Areas, average population 1,500) are most usually described as being in 1 of 5 quintile bands. The bottom quintile represents the 20% of areas that are the most deprived in the country; these are shaded red on the map. The top quintile represents the least deprived areas in the country, and is shaded green.

The Index is widely used to analyse patterns of deprivation, identify areas that would benefit from special initiatives or programmes and as a tool to determine eligibility for specific funding streams.

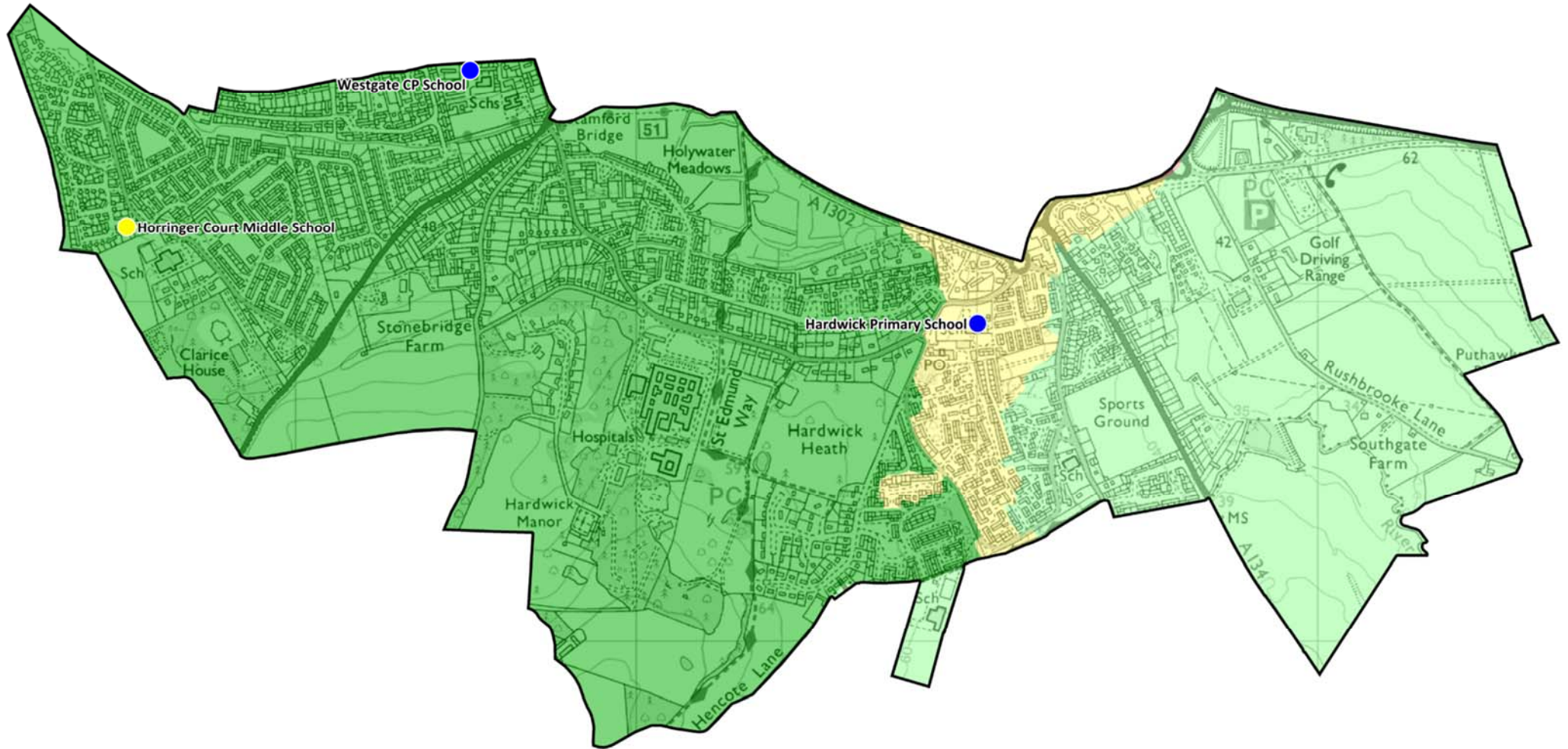


- The IMD 2015 shows that relative deprivation levels in Hardwick are fairly low, with most parts of the division in the least deprived quintile (20%) nationally
- Of the six Lower Super Output Areas in the Division, four are ranked in the least deprived 20%, one is in the next least deprived 20% and one in the mid quintile

IMD 2015 quintile



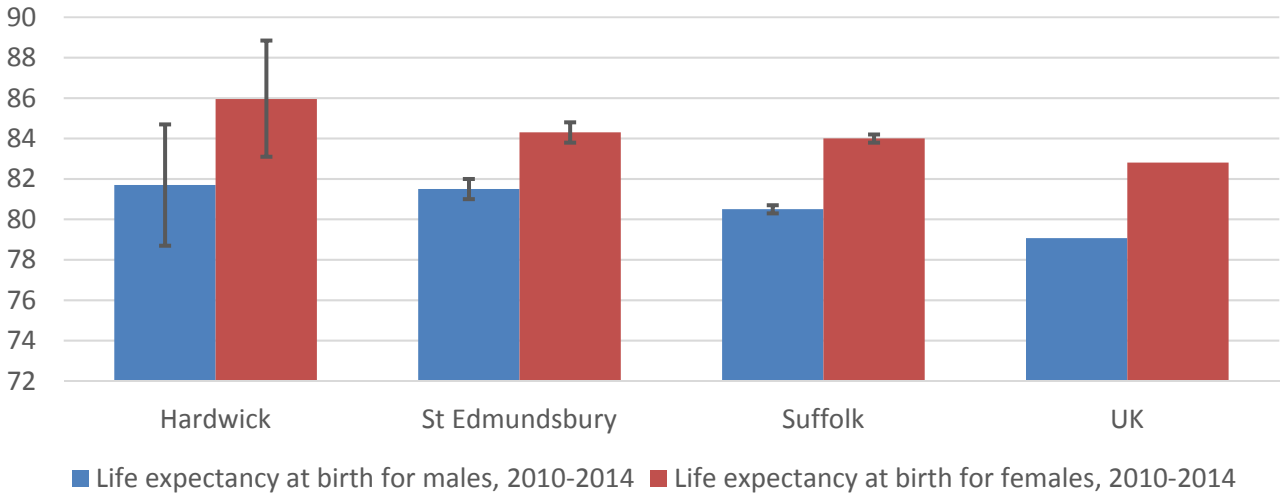
School Type



HEALTH

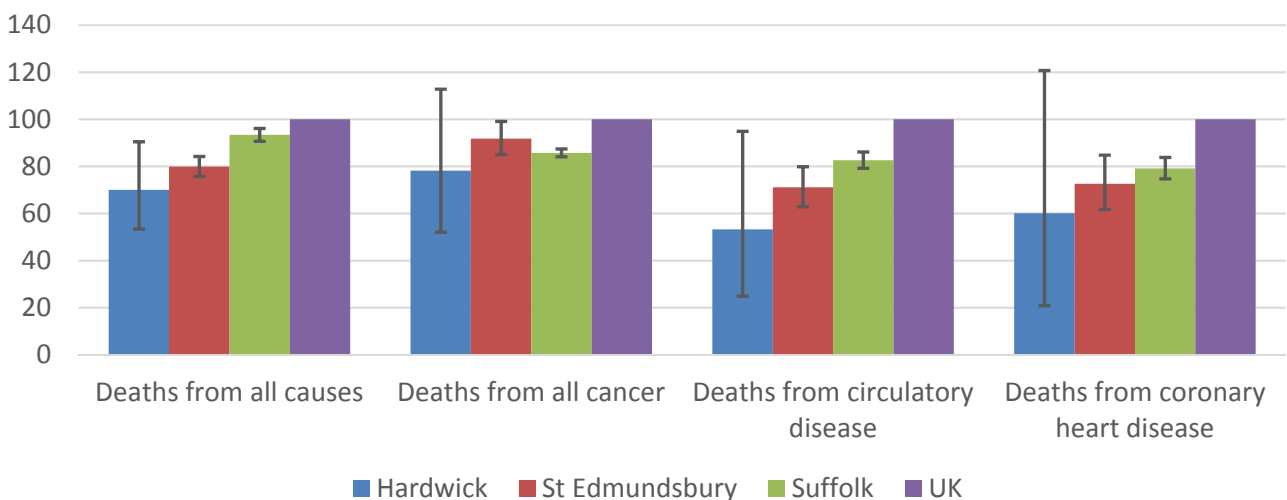
The local data used here is based on relatively small numbers. The confidence limits provide an indication of the reliability of the data. The 95% confidence intervals utilised on the chart provide a range within which there is 95% chance of the true result lying.

LIFE EXPECTANCY AT BIRTH



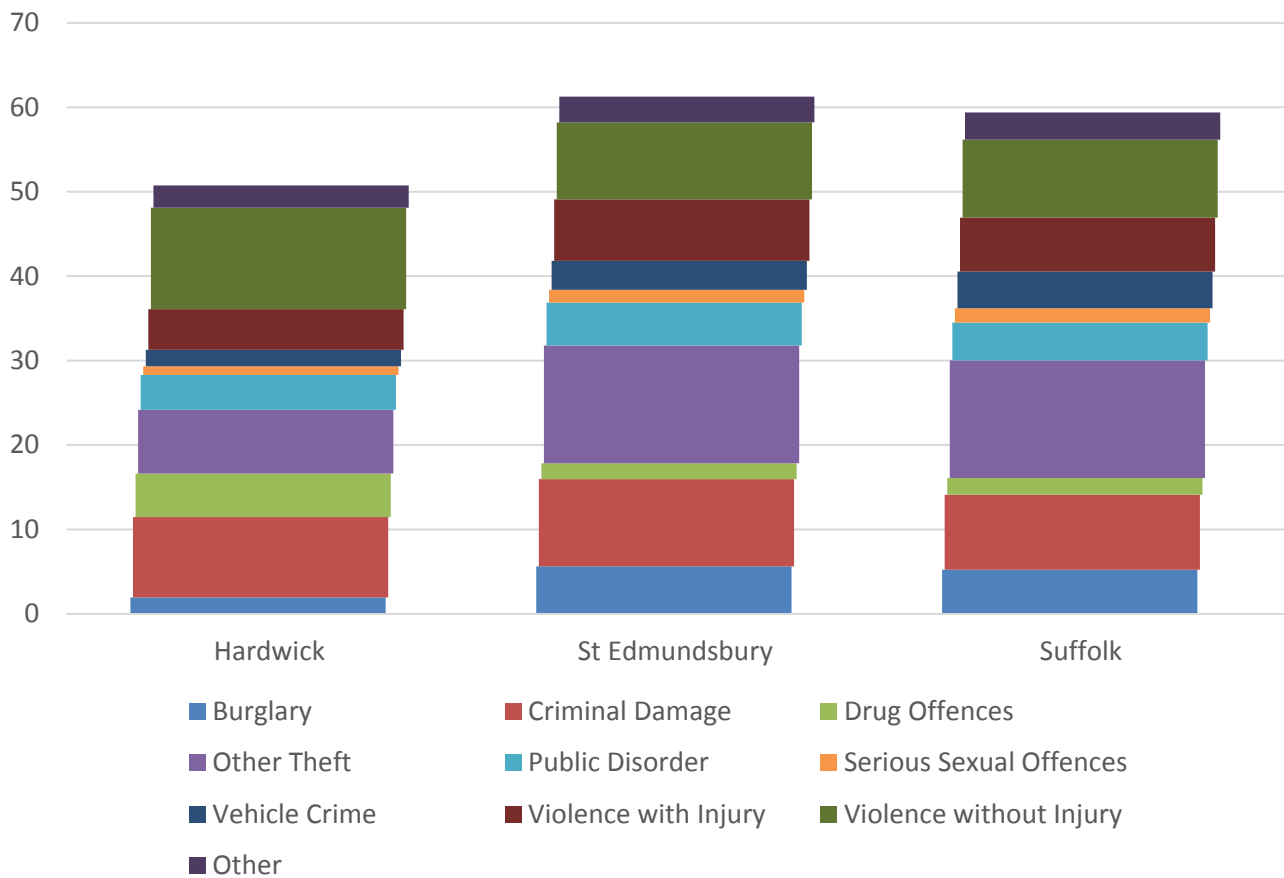
- Estimated life expectancy at birth for males in Hardwick is similar to the St Edmundsbury average and slightly higher than the Suffolk and national figures
- Life expectancy at birth for females is higher than the district, county and UK figures
- The estimated figure for male life expectancy at birth in the division is 81.7 years, while for females it is around 4 years longer at 85.9 years

DEATHS, UNDER 75 YEARS, STANDARDISED MORTALITY RATIO



- Early deaths from all causes in those under 75 years are lower for Hardwick than for the borough, county and the UK
- The standardised mortality ratio data shown here means that for every 100 early deaths from all causes across the UK as a whole, there are an estimated 70 comparable deaths in Hardwick

CRIME & COMMUNITY SAFETY



- The crime rate in Hardwick is lower than in St Edmundsbury and Suffolk as a whole
- In 2015, there were just under 51 recorded crimes per 1,000 residents in Hardwick compared to 61 in St Edmundsbury and 59 across the county as a whole
- The most commonly recorded crime is violence without injury, which has a higher rate than in St Edmundsbury and Suffolk overall with 12 incidents per 1,000 residents (9 in St Edmundsbury and Suffolk)
- Hardwick experiences relatively low levels of “other theft” and burglary compared to the borough and the county overall

ADDITIONAL INFORMATION

Parishes in Division

Bury St. Edmunds

DATA SOURCES

Category	Indicator	Source
Demographic Profile	Quinary population table 2015	ONS 2015 mid-year population estimates
	Population pyramid 2015	ONS 2015 mid-year population estimates
	Ethnicity 2011	ONS 2011 Census
Economy	Employment by broad industrial sector 2015	ONS Business Register and Employment Survey via NOMIS
Labour market	Job Seekers Allowance Claimant Rate (% 16-64 population) 2014-2017	DWP via NOMIS
Education	School information and attainment 2014-2016	Suffolk County Council
	% 16-18 year olds NEET (Not in Employment, Education or Training) 2013-2017	Suffolk County Council
Deprivation	Index of Multiple Deprivation 2015	Department for Communities and Local Government
Health	Life expectancy at birth 2010-2014	Public Health England
Health	Standardised mortality ratio for deaths from all causes, cancer, circulatory disease and coronary heart disease, aged under 75 2010-2014. The standardised mortality ratio is the ratio of observed deaths in the study group to expected deaths in the general population.	Public Health England
Community Safety	Recorded crime rate per 1,000 resident population 2015	Suffolk Police

For more data and information about Hardwick Electoral Division, see the Suffolk Observatory www.suffolkobservatory.info

