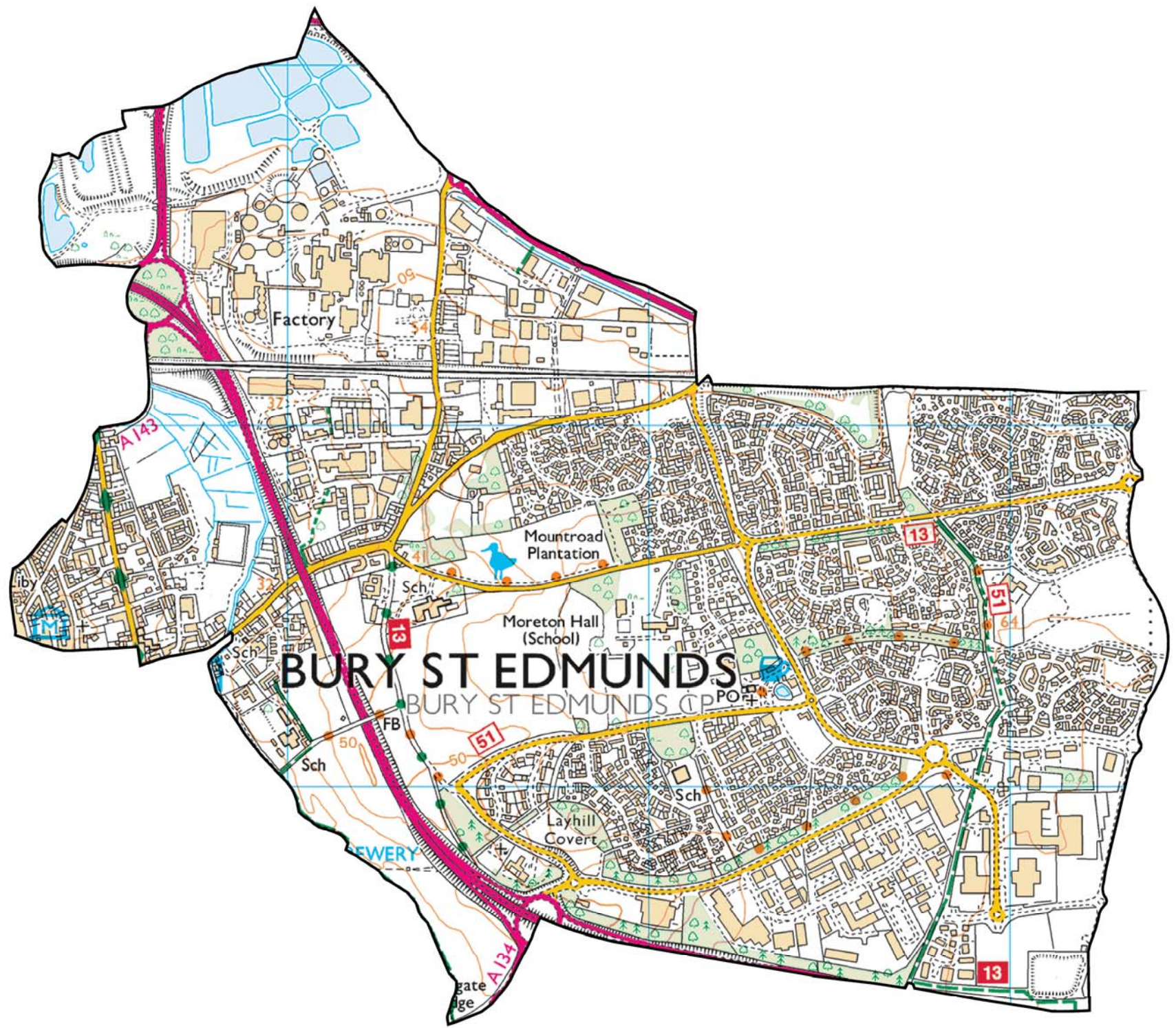


EASTGATE & MORETON HALL

ELECTORAL DIVISION PROFILE 2017

This Division comprises Eastgate and Moreton Hall wards

www.suffolkobservatory.info



CONTENTS

- Demographic Profile: Age & Ethnicity
- Economy and Labour Market
- Schools & NEET
- Index of Multiple Deprivation
- Health
- Crime & Community Safety
- Additional Information
- Data Sources

ELECTORAL DIVISION PROFILES: AN INTRODUCTION

These profiles have been produced to support elected members, constituents and other interested parties in understanding the demographic, economic, social and educational profile of their neighbourhoods. We have used the latest data available at the time of publication.

Much more data is available from national and local sources than is captured here, but it is hoped that the profile will be a useful starting point for discussion, where local knowledge and experience can be used to flesh out and illuminate the information presented here.

The profile can be used to help look at some fundamental questions e.g.

- Does the age profile of the population match or differ from the national profile?
- Is there evidence of the ageing profile of the county in all the wards in the Division or just some?
- How diverse is the community in terms of ethnicity?
- What is the impact of deprivation on families and residents?
- Does there seem to be a link between deprivation and school performance?
- What is the breakdown of employment sectors in the area?
- Is it a relatively healthy area compared to the rest of the district or county?
- What sort of crime is prevalent in the community?

A vast amount of additional data is available on the **Suffolk Observatory**

www.suffolkobservatory.info

The Suffolk Observatory is a free online resource that contains all Suffolk's vital statistics; it is the one-stop-shop for information and intelligence about Suffolk. Through data, reports and profiles, the Suffolk Observatory provides a comprehensive picture of the County. It is a great source for useful facts and figures that can be used for writing reports and presentations, informing strategic and business planning, preparing funding applications or supporting academic research. Data is presented around the key themes of education and skills, economy and employment, health and care, population, deprivation, housing, environment, transport and travel and crime. All areas of the county are covered, right down to district, ward and parish level, with information easily accessible in a variety of formats. You can also build your own reports by different themes and topics.

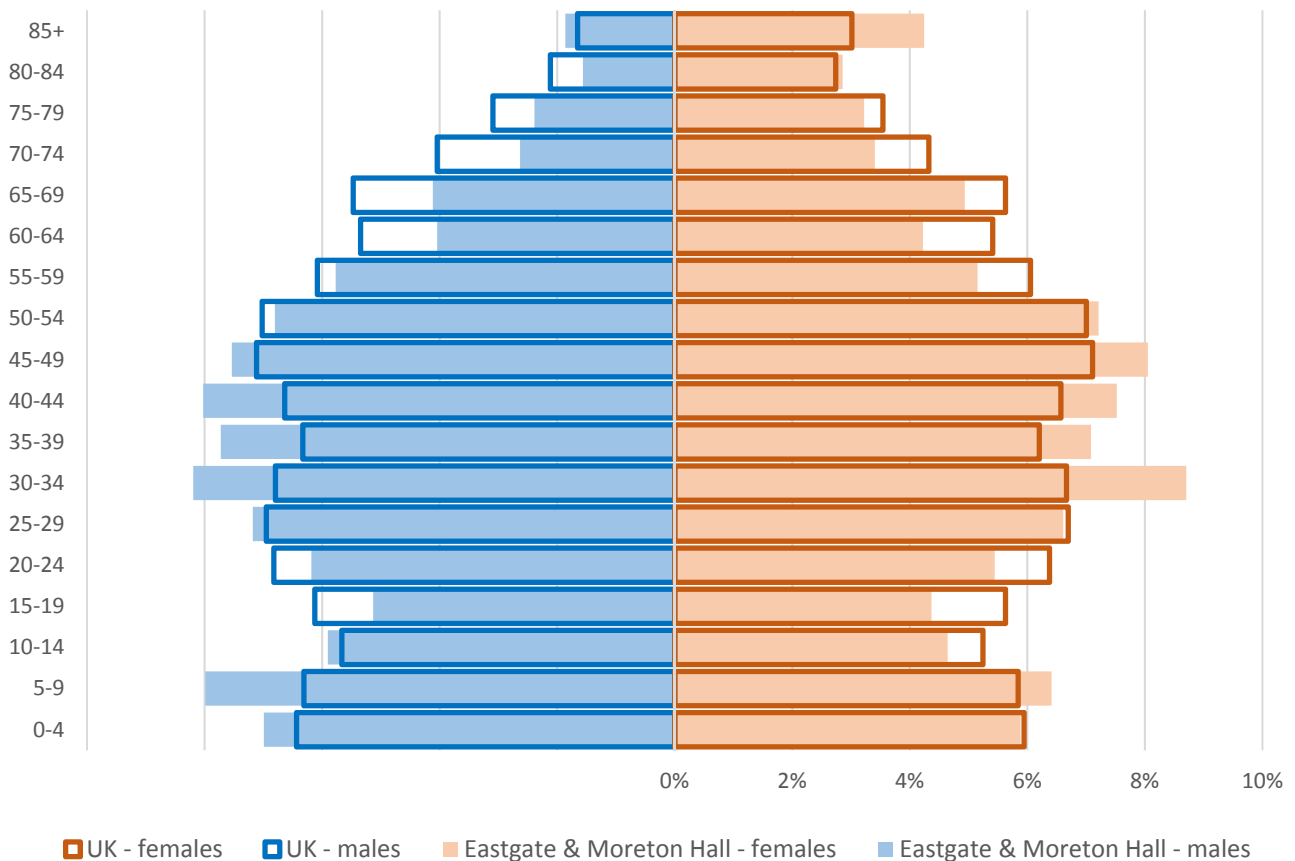
Technical Notes:

1. Where Electoral Divisions do not exactly match ward boundaries, we have adopted a "best fit" approach to produce a dataset.
2. District, county and national level data is provided where possible to provide a context for comparisons.

DEMOGRAPHIC PROFILE - AGE

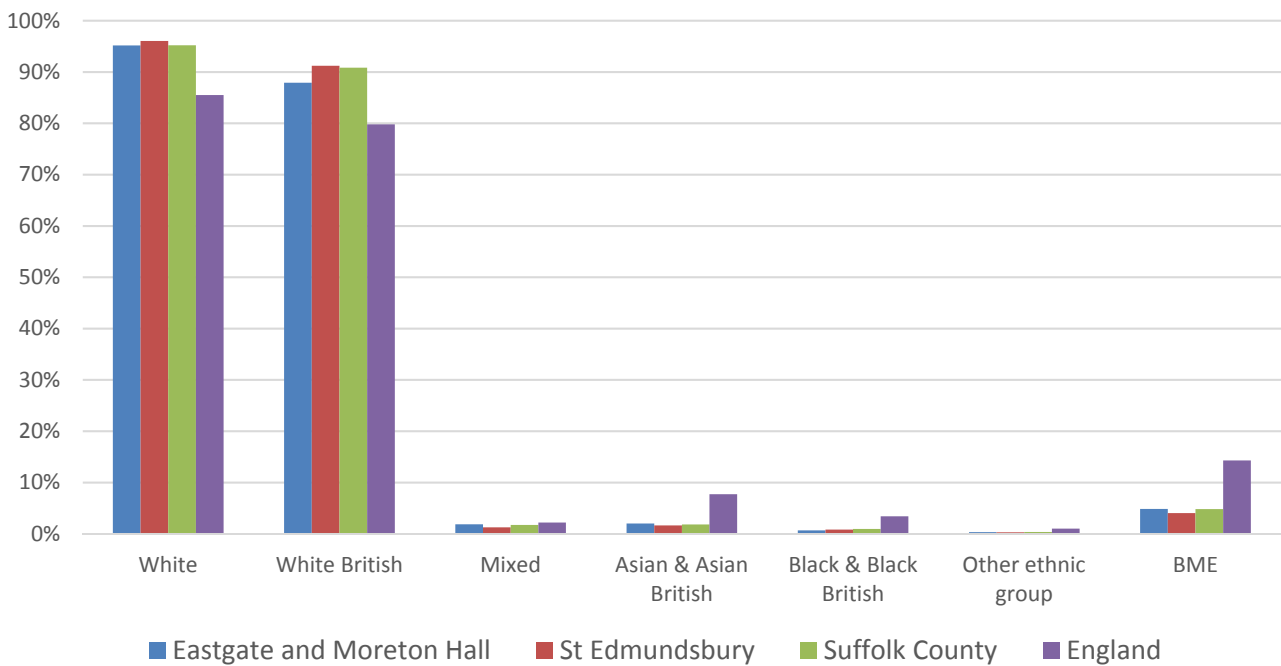
In mid 2015, the population of Eastgate and Moreton Hall stood at 10,812, an increase of 3.6% since the 2011 Census. The age structure of the component wards and the division as a whole is set out below.

	Eastgate and Moreton Hall Division	Eastgate	Moreton Hall
All Ages	10,812	2,672	8,140
0-4	695	116	579
5-9	777	107	670
10-14	569	77	492
15-19	513	68	445
20-24	628	167	461
25-29	745	208	537
30-34	914	199	715
35-39	800	157	643
40-44	840	161	679
45-49	843	153	690
50-54	758	190	568
55-59	590	134	456
60-64	447	151	296
65-69	490	123	367
70-74	327	138	189
75-79	304	146	158
80-84	240	141	99
85+	332	236	96



- The age pyramid for Eastgate and Moreton Hall shows a higher proportion of people between the ages of 30-49 and 0-9 than average
- The most common age groups in Eastgate and Moreton Hall is 30-34 years, followed by 45-49 year olds
- The division has a lower than average proportion of people over the age of 55, and also of young people aged 15-24

ETHNICITY

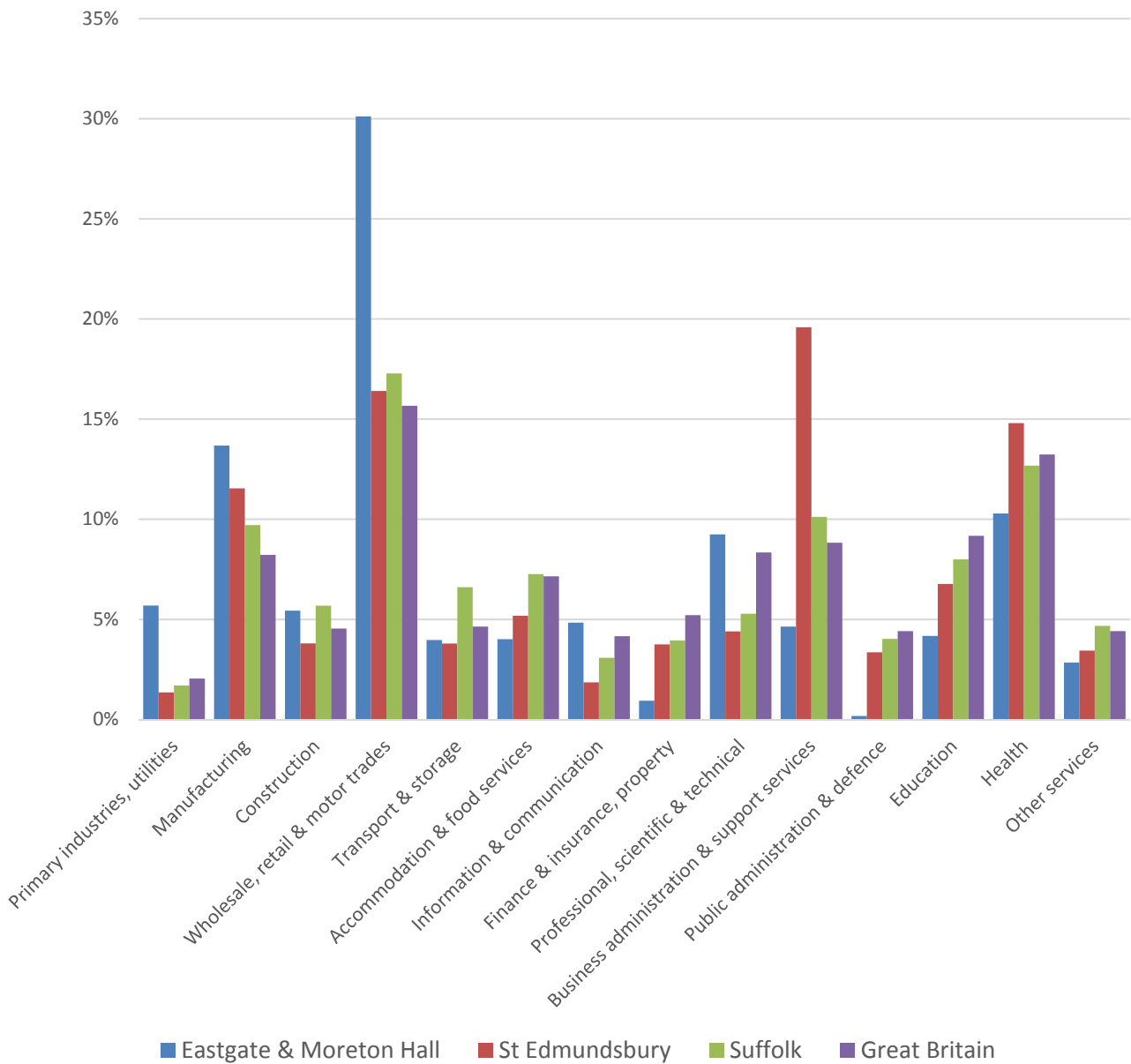


- According to the latest data (2011 Census), 95.2% (9,930) of the population of Eastgate and Moreton Hall are white, exactly the same as in the county overall
- The percentage of people of black or minority ethnic origin in the division at 4.8% is also the same as in Suffolk, and only slightly higher than for St Edmundsbury
- Eastgate and Moreton Hall has a similar diversity profile to both St Edmundsbury and Suffolk as a whole

	All people	White		White British		Mixed		Asian and Asian British		Black and Black British		Other Ethnic Group		Black or Minority Ethnic Total	
	Count	Count	%	Count	%	Count	%	Count	%	Count	%	Count	%	Count	%
Eastgate & Moreton Hall	10,434	9,930	95.2	9,171	87.9	192	1.8	211	2.0	68	0.7	33	0.3	504	4.8
St Edmundsbury	111,008	106,615	96.0	101,239	91.2	1,404	1.3	1,824	1.6	902	0.8	263	0.2	4,393	4.0
Suffolk	728,163	693,195	95.2	661,458	90.8	12,472	1.7	13,131	1.8	6,854	0.9	2,511	0.3	34,968	4.8
England & Wales			86.0		80.5		2.2		6.7		2.8		0.4		12.1

ECONOMY

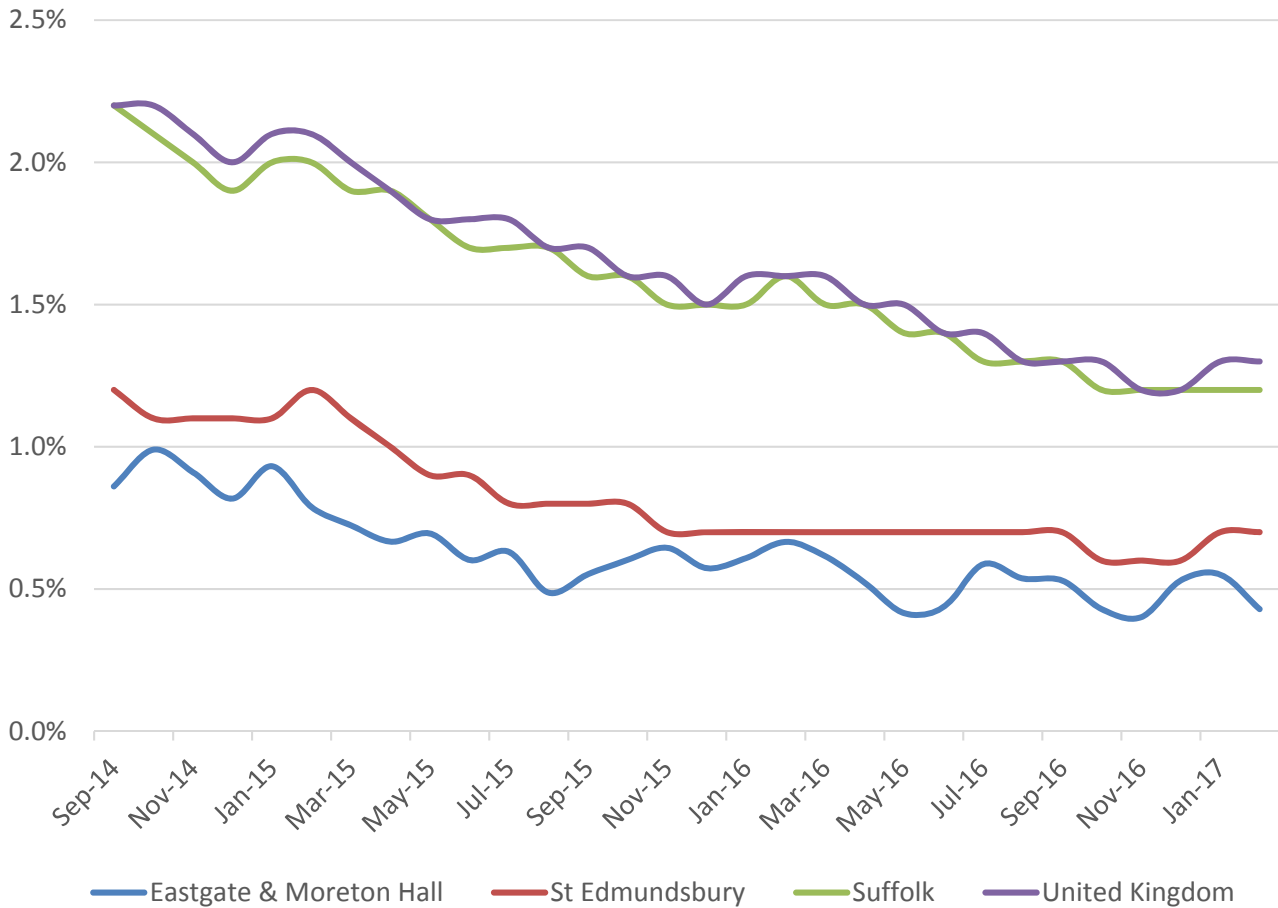
There are 7,700 people employed in Eastgate and Moreton Hall.



- The key employment sectors in Eastgate and Moreton Hall are wholesale, retail and motor trades and manufacturing
- Wholesale, retail and motor trades and manufacturing are particularly important as the proportion of the working age population employed in these sectors in Eastgate and Moreton Hall is much higher than the national average
- Nearly a third of workers in Eastgate and Moreton Hall are employed in the wholesale, retail and motor trade sectors
- Health and professional, scientific and technical activities also account for significant numbers of jobs in the division

LABOUR MARKET

JOBSEEKERS ALLOWANCE CLAIMANT RATE



- Eastgate and Moreton Hall has experienced a reduction in Job Seekers Allowance claimants since 2014, in line with national and local trends
- The rate for Eastgate and Moreton Hall is consistently below that for the borough, county and country as a whole
- In February 2017, 0.4% of the working age population are claiming JSA, well below county and national rates and lower than the borough of St Edmundsbury

SCHOOLS

SCHOOL INFORMATION

Schools in the Division

Name	Phase	Average cohort size at:			Latest Ofsted	Latest Ofsted Date
		Foundation Stage (age 5)	KS2 (age 11)	KS4 (age 16)		
Abbots Green Primary School	Primary	60			Good	04/12/2012
Sebert Wood CP School	Primary	60			Outstanding	23/06/2009
First Base, BSE	PRU				Outstanding	10/12/2014
Priory School	Special		14	22	Outstanding	05/11/2014
Sybil Andrews Academy	Upper				Not yet inspected as an Academy	

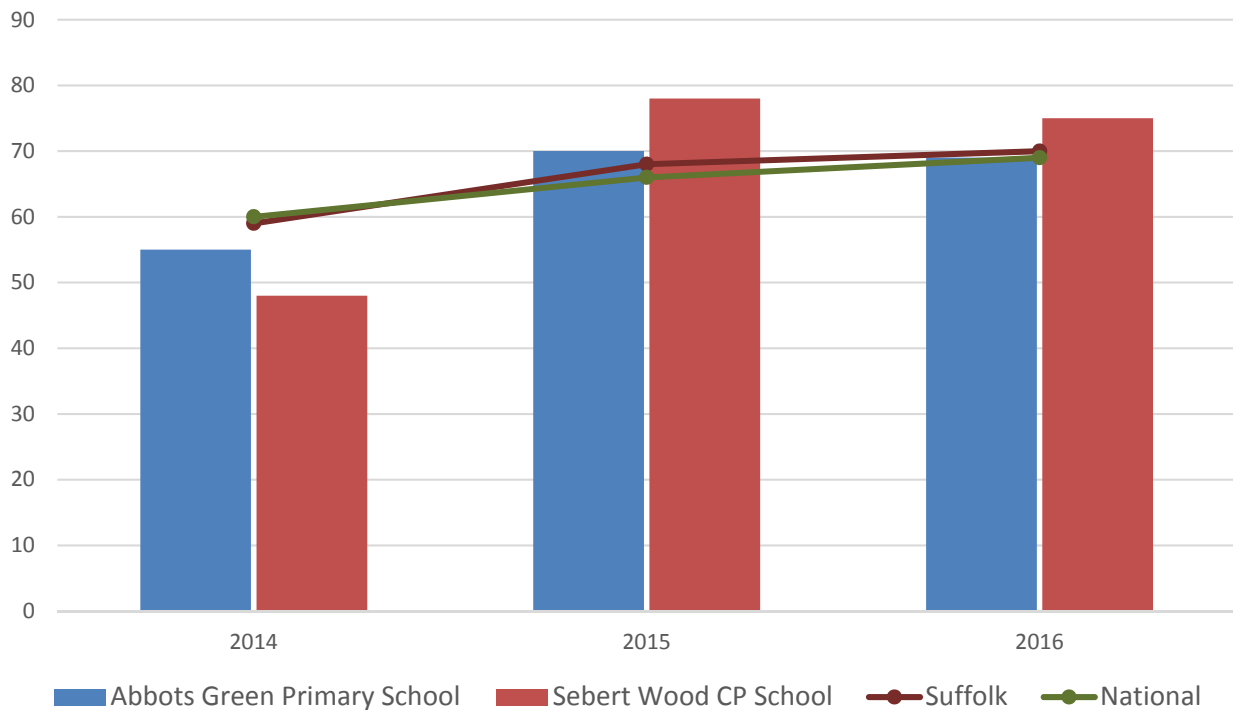
School Catchment overlaps with the Division

Name	Phase	Average cohort size at:			Latest Ofsted	Latest Ofsted Date
		Foundation Stage (age 5)	KS4 (age 16)	KS5 (age 18)		
Guildhall Feoffment CP School	Primary	53			Good	18/05/2016
St Edmundsbury CEVAP School	Primary	40			Good	07/03/2013
King Edward VI CEVC Upper School	Upper		345	174	Good	03/12/2013

SCHOOL ATTAINMENT

Foundation Stage Profile (reception)

% pupils achieving Good Level of Development (GLD)



- In 2014, neither school saw Foundation Stage attainment meet the county and national averages
- Attainment at both schools improved in 2015, achieving levels of attainment above county and national averages
- Although both schools saw a decline in attainment in 2016, pupils there are still achieving results similar to or just above Suffolk and the country as a whole

Key Stage 2 (age 11)

Pupil Achievement in all three subjects, Reading, Writing and Mathematics
(2014–2015 as % Level 4 or better & 2016 % Expected Level or better)

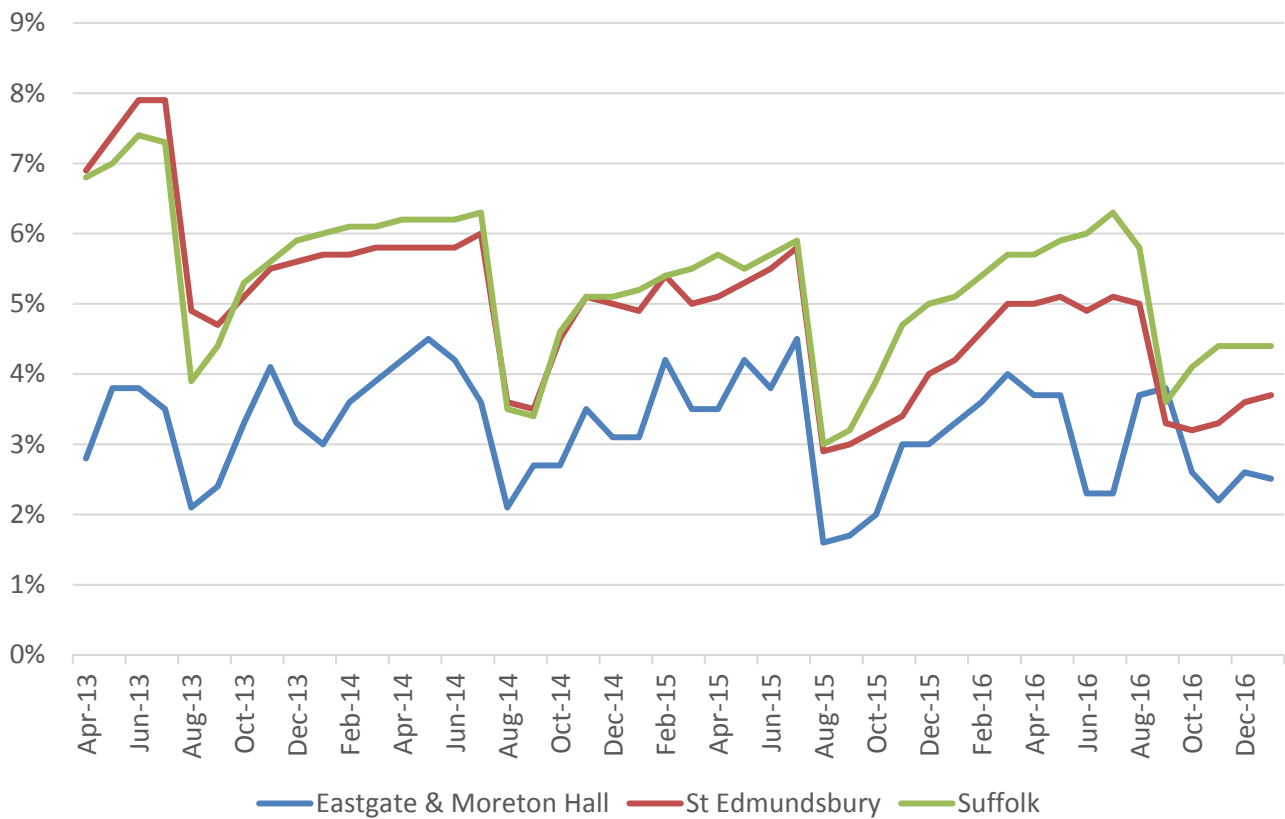
In July 2016, there was a change in the way pupil achievement is measured at the end of KS2. Prior to 2016, pupils received National Curriculum Level grades for English and Maths, with L4 being the expected level at the end of Key Stage 2. In 2016 the measure scaled score and shows whether or not a pupil has achieved the national standard for that subject

Priory Special was the only school providing Key Stage 2 education in the division when this profile was produced

GCSE (Key Stage 4) (age 16)

There was no mainstream Upper School open in the division at this time.

NEET % (NOT IN EDUCATION, EMPLOYMENT OR TRAINING)

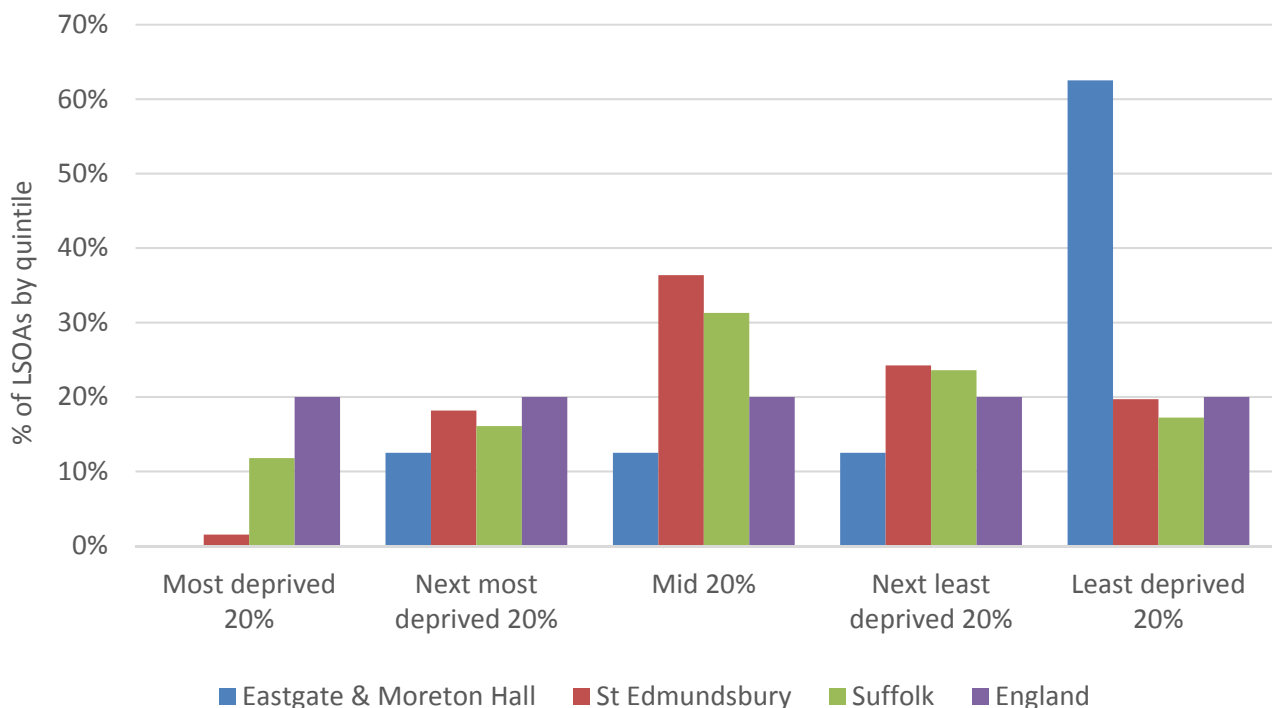


- In January 2017, 2.5% of 16-18 year olds were classified as NEET in Eastgate and Moreton Hall (where current activity is known).
- NEET levels in Eastgate and Moreton Hall are generally below the borough and county averages

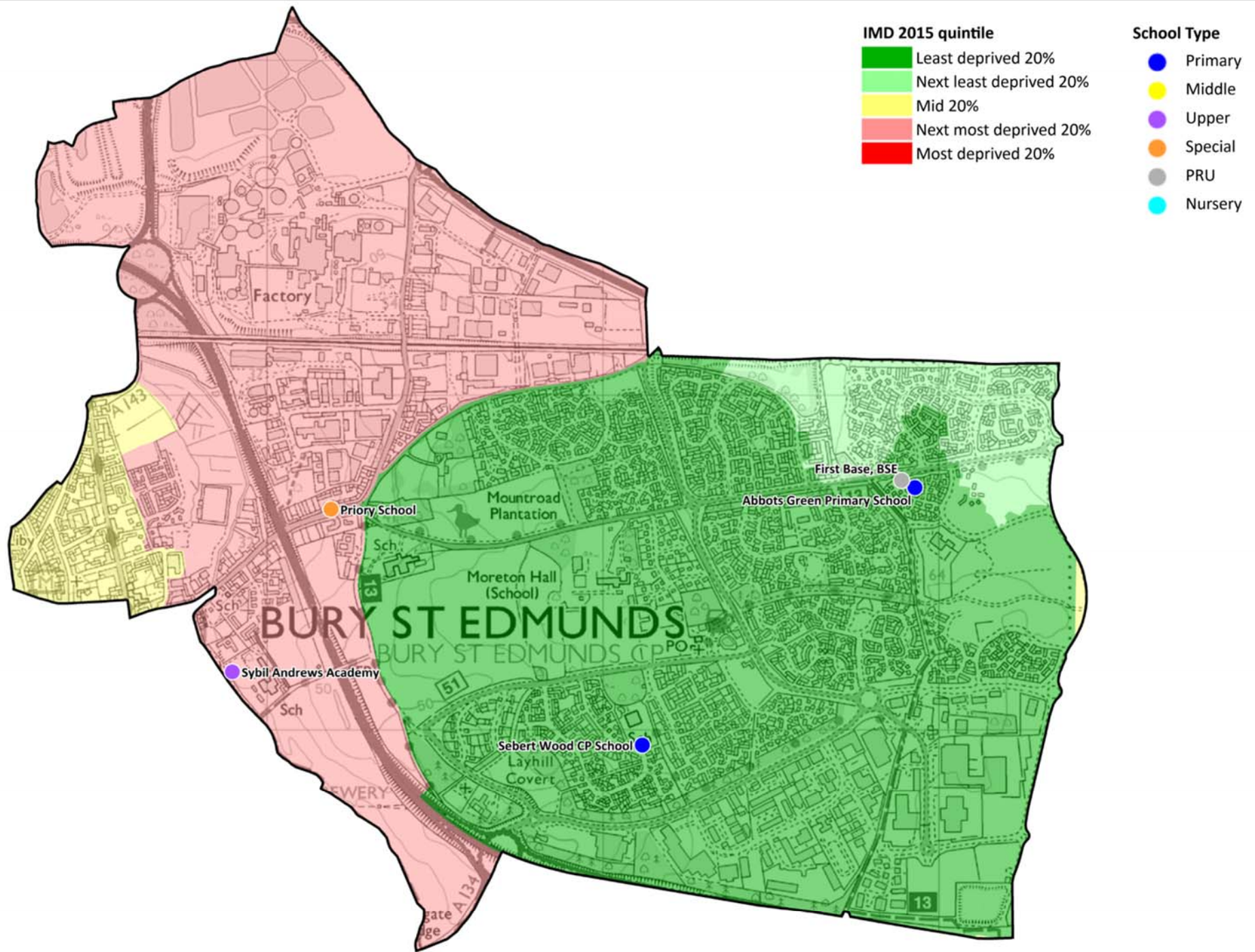
INDEX OF MULTIPLE DEPRIVATION (IMD) 2015 (SEE MAP OVERLEAF)

The IMD combines a number of indicators, chosen to cover a range of economic, social and housing issues, into a single deprivation score for each small area in England. This allows each area to be ranked relative to one another according to their level of deprivation. Small areas (Lower Super Output Areas, average population 1,500) are most usually described as being in 1 of 5 quintile bands. The bottom quintile represents the 20% of areas that are the most deprived in the country; these are shaded red on the map. The top quintile represents the least deprived areas in the country, and is shaded green.

The Index is widely used to analyse patterns of deprivation, identify areas that would benefit from special initiatives or programmes and as a tool to determine eligibility for specific funding streams.



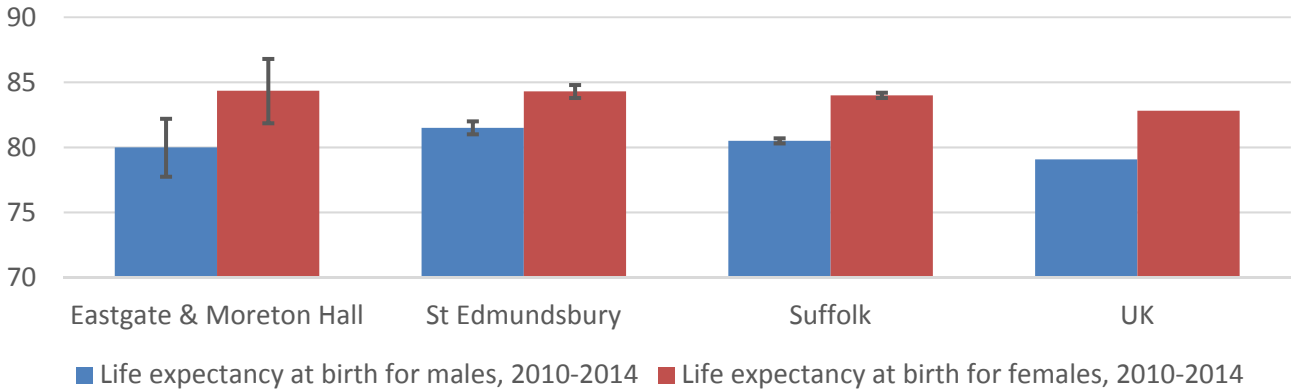
- The IMD 2015 shows that relative deprivation levels in Eastgate and Moreton Hall are quite varied, with parts of the division classified in four of the five deprivation quintiles, though a significant proportion of the division is ranked in the least deprived 20% of areas in England
- Of the eight Lower Layer Super Output Areas comprising the division, five are ranked in the least deprived quintile, with a further one each in the next least deprived, mid and next most deprived quintiles



HEALTH

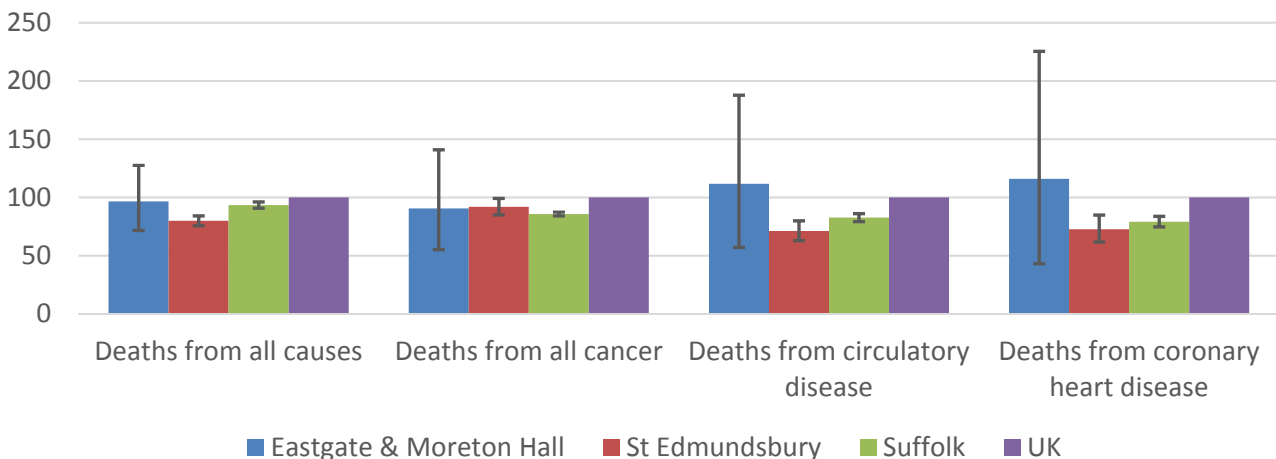
The local data used here is based on relatively small numbers. The confidence limits provide an indication of the reliability of the data. The 95% confidence intervals utilised on the chart provide a range within which there is 95% chance of the true result lying.

LIFE EXPECTANCY AT BIRTH



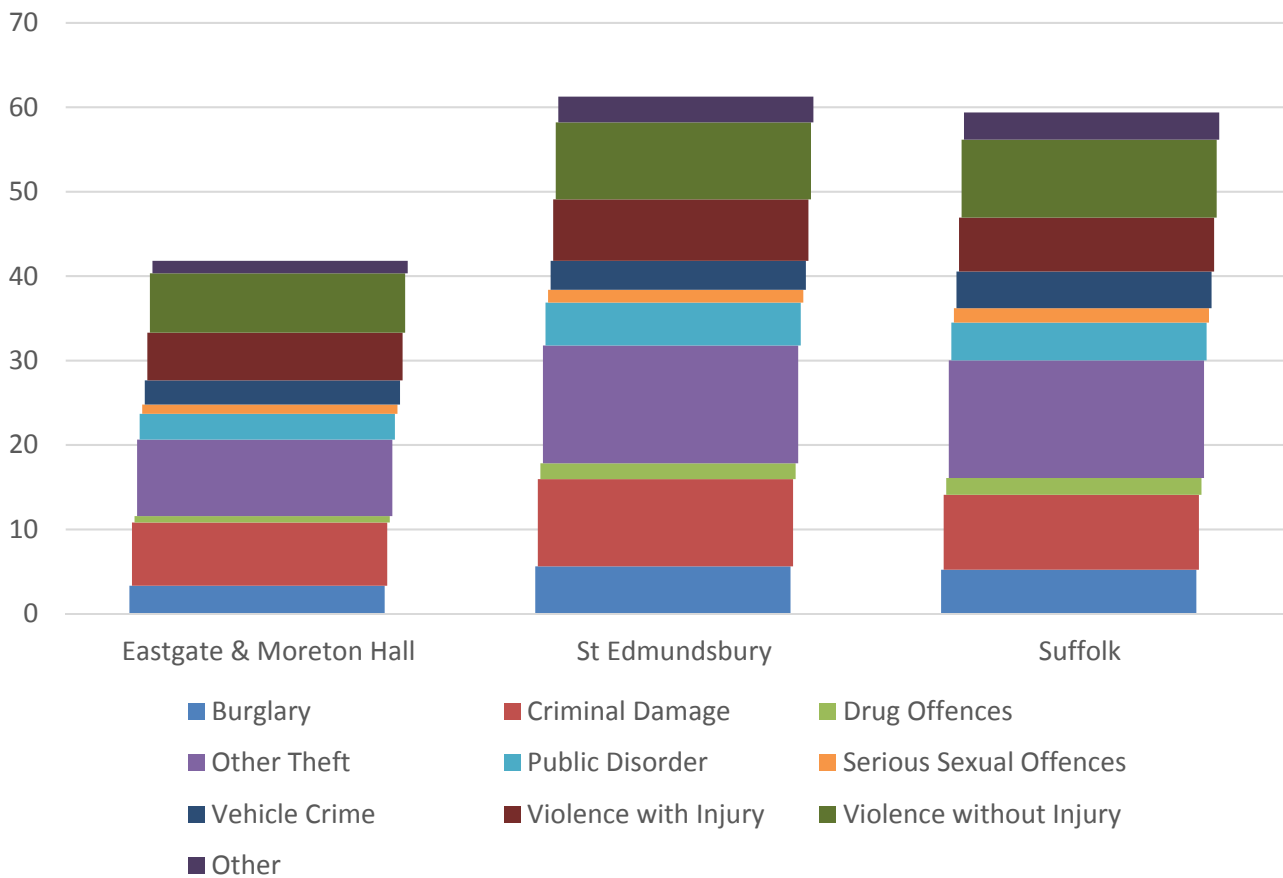
- Estimated male life expectancy at birth in Eastgate and Moreton Hall is similar to the borough, county and UK figures
- Female life expectancy at birth is also estimated to be similar to the borough and county, but slightly higher than the UK
- The estimated figures for life expectancy at birth for males in the division is 80 years, while for females it is over four years longer, at 84.4 years

DEATHS, UNDER 75 YEARS, STANDARDISED MORTALITY RATIO



- The estimated death rate from all causes in those aged under 75 in this division is higher than for the borough and for Suffolk, but lower than the overall UK rate
- The standardised mortality ratio data shown here means that for every 100 early deaths from all causes across the UK as a whole, there are an estimated 97 comparable deaths in Eastgate and Moreton Hall
- Early deaths from circulatory and coronary heart diseases in those aged under 75 in Eastgate and Moreton Hall are estimated to occur at a rate above that in St Edmundsbury, Suffolk and the UK

CRIME & COMMUNITY SAFETY



- The crime rate for Eastgate and Moreton Hall division is lower than that for both the borough and county
- In 2015, there were just under 42 recorded crimes per 1,000 residents in Upper Gipping compared to 61 in St Edmundsbury and 59 across the county as a whole
- In line with St Edmundsbury and Suffolk, the most commonly recorded type of crime in the division is “other theft”
- Criminal damage and violence without injury are the next most commonly recorded crimes, although they occur at lower rates than in the borough and county overall

ADDITIONAL INFORMATION

Parishes in Division

Bury St. Edmunds

DATA SOURCES

Category	Indicator	Source
Demographic Profile	Quinary population table 2015	ONS 2015 mid-year population estimates
	Population pyramid 2015	ONS 2015 mid-year population estimates
	Ethnicity 2011	ONS 2011 Census
Economy	Employment by broad industrial sector 2015	ONS Business Register and Employment Survey via NOMIS
Labour market	Job Seekers Allowance Claimant Rate (% 16-64 population) 2014-2017	DWP via NOMIS
Education	School information and attainment 2014-2016	Suffolk County Council
	% 16-18 year olds NEET (Not in Employment, Education or Training) 2013-2017	Suffolk County Council
Deprivation	Index of Multiple Deprivation 2015	Department for Communities and Local Government
Health	Life expectancy at birth 2010-2014	Public Health England
Health	Standardised mortality ratio for deaths from all causes, cancer, circulatory disease and coronary heart disease, aged under 75 2010-2014. The standardised mortality ratio is the ratio of observed deaths in the study group to expected deaths in the general population.	Public Health England
Community Safety	Recorded crime rate per 1,000 resident population 2015	Suffolk Police

For more data and information about Eastgate and Moreton Hall Electoral Division, see the Suffolk Observatory www.suffolkobservatory.info

