

ST HELEN'S

ELECTORAL DIVISION PROFILE 2017

This Division comprises part of Alexandra and Holywells wards

www.suffolkobservatory.info



CONTENTS

- Demographic Profile: Age & Ethnicity
- Economy and Labour Market
- Schools & NEET
- Index of Multiple Deprivation
- Health
- Crime & Community Safety
- Additional Information
- Data Sources

ELECTORAL DIVISION PROFILES: AN INTRODUCTION

These profiles have been produced to support elected members, constituents and other interested parties in understanding the demographic, economic, social and educational profile of their neighbourhoods. We have used the latest data available at the time of publication.

The data presented here is selected from a range of national and local sources. The profile provides a useful summary of information about the division that can be enriched by local knowledge and experience, and thus provide a starting point for discussion about the local area.

The profile can be used to help look at some fundamental questions e.g.

- Does the age profile of the population match or differ from the national profile?
- Is there evidence of the ageing profile of the county in all the wards in the Division or just some?
- How diverse is the community in terms of ethnicity?
- What is the impact of deprivation on families and residents?
- Does there seem to be a link between deprivation and school performance?
- What is the breakdown of employment sectors in the area?
- Is it a relatively healthy area compared to the rest of the district or county?
- What sort of crime is prevalent in the community?

A vast amount of additional data is available on the **Suffolk Observatory**

www.suffolkobservatory.info

The Suffolk Observatory is a free online resource that contains all Suffolk's vital statistics; it is the one-stop-shop for information and intelligence about Suffolk. Through data, reports and profiles, the Suffolk Observatory provides a comprehensive picture of the County. It is a great source of useful facts and figures that can be used for writing reports and presentations, informing strategic and business planning, preparing funding applications or supporting academic research. Data is presented around the key themes of education and skills, economy and employment, health and care, population, deprivation, housing, environment, transport and travel and crime. All areas of the county are covered, right down to district, ward and parish level, with information easily accessible in a variety of formats. You can even build your own reports by different themes and topics.

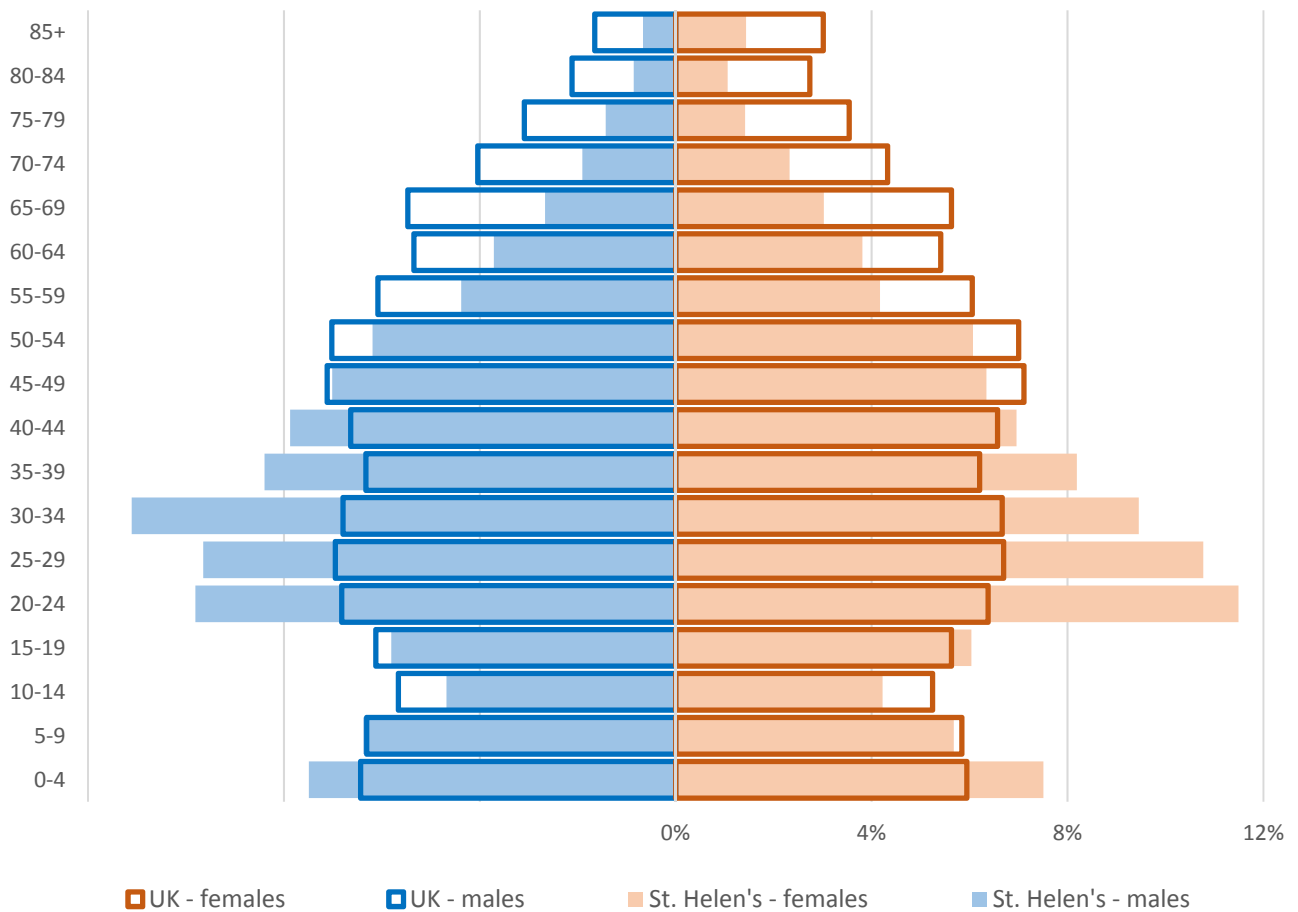
Technical Notes:

1. Where Electoral Divisions do not exactly match ward boundaries, we have adopted a "best fit" approach to produce a dataset.
2. District, county and national level data is provided where possible to provide a context for comparisons.

DEMOGRAPHIC PROFILE - AGE

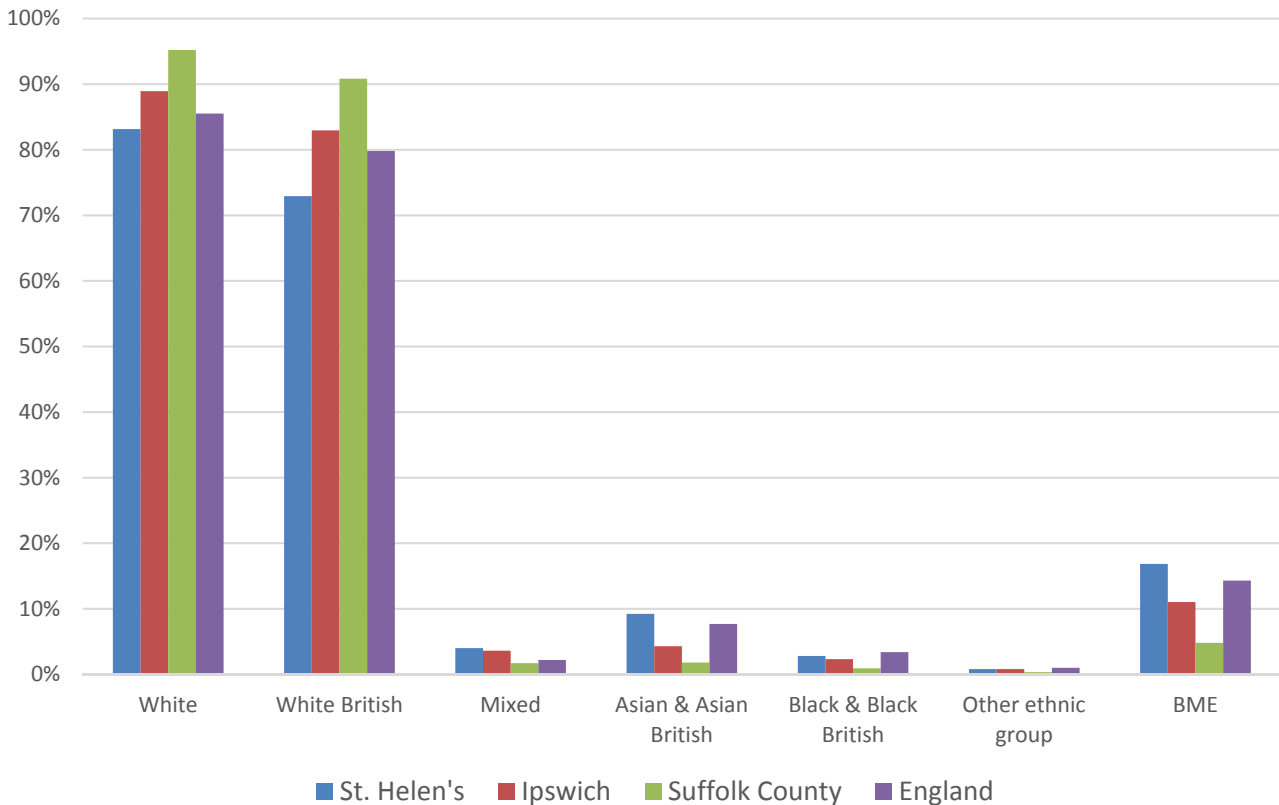
In mid-2015, the population of St Helen's stood at 12,149, an increase of 10.5% since the 2011 Census. The age structure of the division is set out below.

St. Helen's Division	
All Ages	12,149
0-4	911
5-9	734
10-14	542
15-19	719
20-24	1,290
25-29	1,238
30-34	1,253
35-39	1,008
40-44	903
45-49	813
50-54	745
55-59	520
60-64	457
65-69	345
70-74	256
75-79	173
80-84	116
85+	126



- The age pyramid for St Helen's shows a higher than average proportion of people between the ages of 20 and 44.
- The commonest age group in St Helen's is 20 - 24, followed by 30 - 34
- Currently, there is a much lower than average number of people of retirement age, and much higher proportions of people of working age than nationally
- There is also a higher than average under 5s population

ETHNICITY

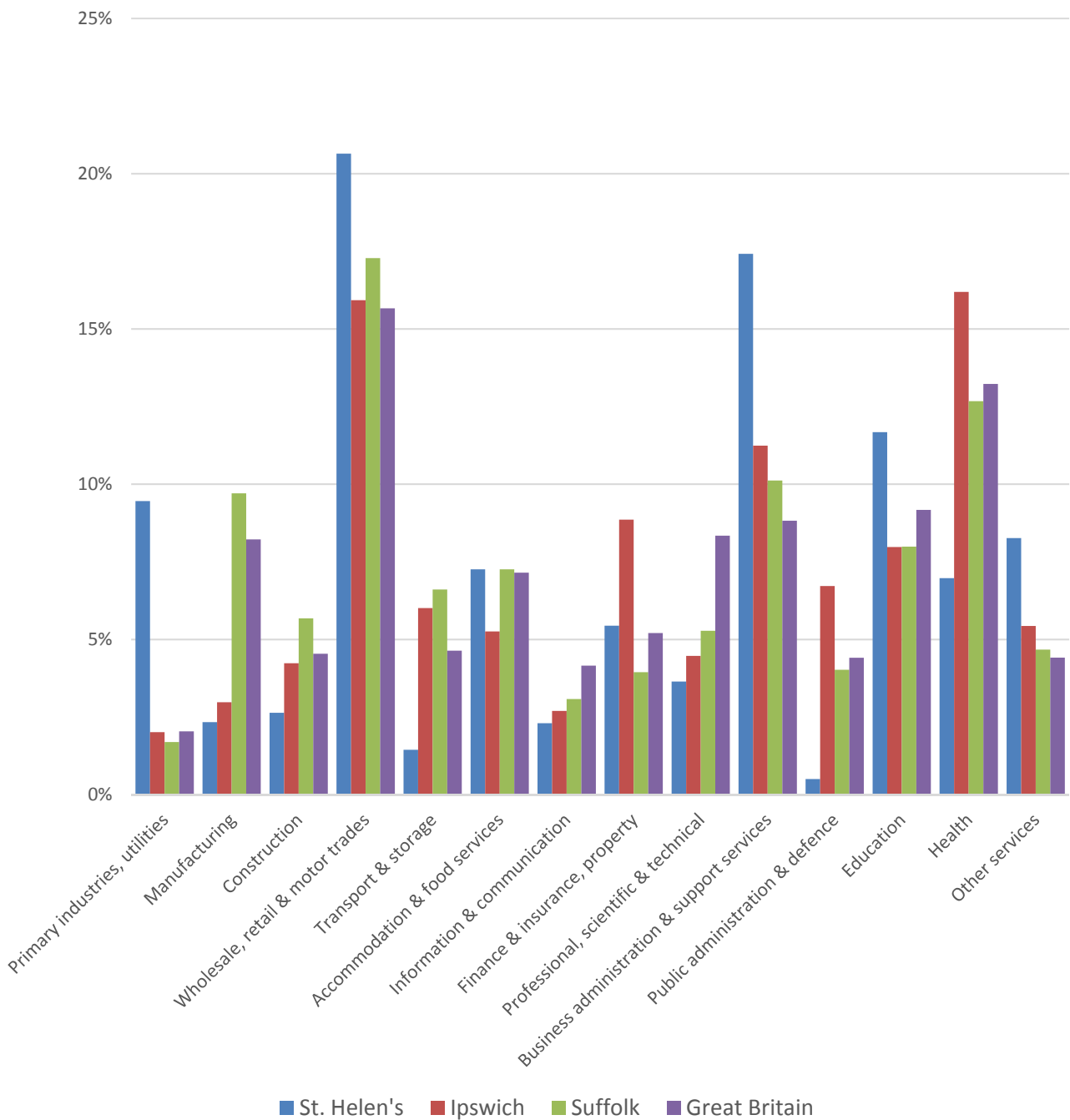


- According to the latest data (2011 Census), 83.1% (9,139 people) of the population are white, which is well below the figure for Suffolk.
- There are 1,852 (16.9%) people of black or minority ethnic origin in the division, more than four times the number for the county overall
- St Helen's diversity profile varies greatly when compared to Ipswich, with generally higher proportions of minority ethnic groups than Suffolk as a whole

	All people		White		White British		Mixed		Asian and Asian British		Black and Black British		Other Ethnic Group		Black or Minority Ethnic Total	
	Count	%	Count	%	Count	%	Count	%	Count	%	Count	%	Count	%	Count	%
St. Helen's	10,991		9,139	83.1	8,014	72.9	441	4.0	1,013	9.2	309	2.8	89	0.8	1,852	16.9
Ipswich	133,384		118,596	88.9	110,624	82.9	4,816	3.6	5,740	4.3	3,096	2.3	1,136	0.9	14,788	11.1
Suffolk	728,163		693,195	95.2	661,458	90.8	12,472	1.7	13,131	1.8	6,854	0.9	2,511	0.3	34,968	4.8
England & Wales				86.0		80.5		2.2		6.7		2.8		0.4		12.1

ECONOMY

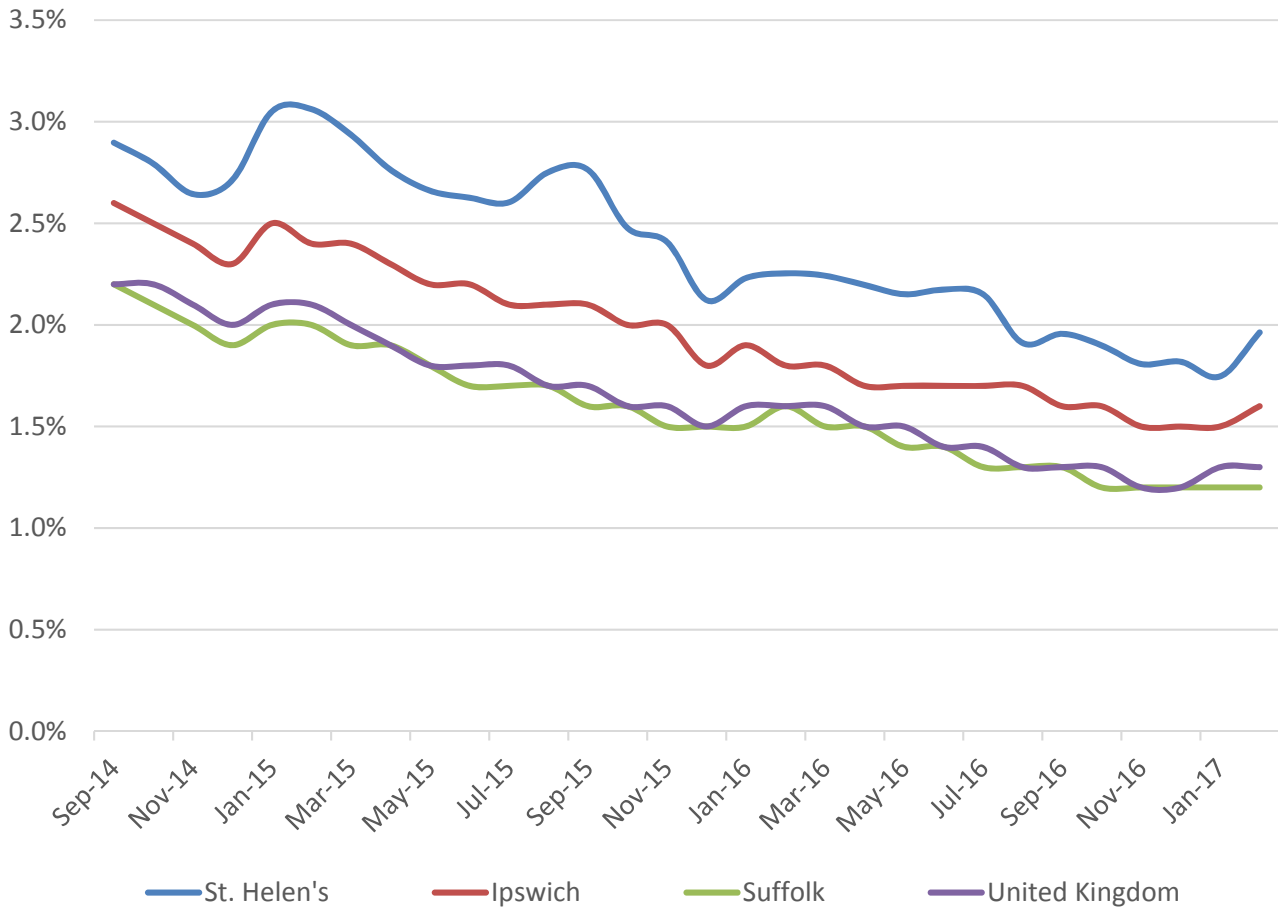
There are 6,200 people employed in St Helen's.



- The key employment sectors in St Helen's division are wholesale, retail and motor trades, business administration and support services and education
- These three sectors combined account for nearly half of all jobs in the division
- A greater proportion of employment is in lower skilled sectors

LABOUR MARKET

JOB SEEKERS ALLOWANCE CLAIMANT RATE



- St Helen's has consistently had a higher proportion of working age residents claiming Job Seekers Allowance compared to Ipswich and Suffolk overall
- There has been a reduction in the proportion of claimants over the last three years, mirroring local and national trends
- In percentage terms, around 2% of the working age population are claiming JSA according to the latest data from February 2017

SCHOOLS

SCHOOL INFORMATION

Schools in the Division

Name	Phase	Average cohort size at:		Latest Ofsted	Latest Ofsted Date
		Foundation Stage (age 5)	KS2 (age 11)		
Clifford Road Primary School	Primary	60	54	Good	04/06/2015
Cliff Lane Primary School	Primary	59	50	Not yet inspected as an Academy	
Rose Hill Primary School	Primary	45	41	Requires Improvement	01/12/2016

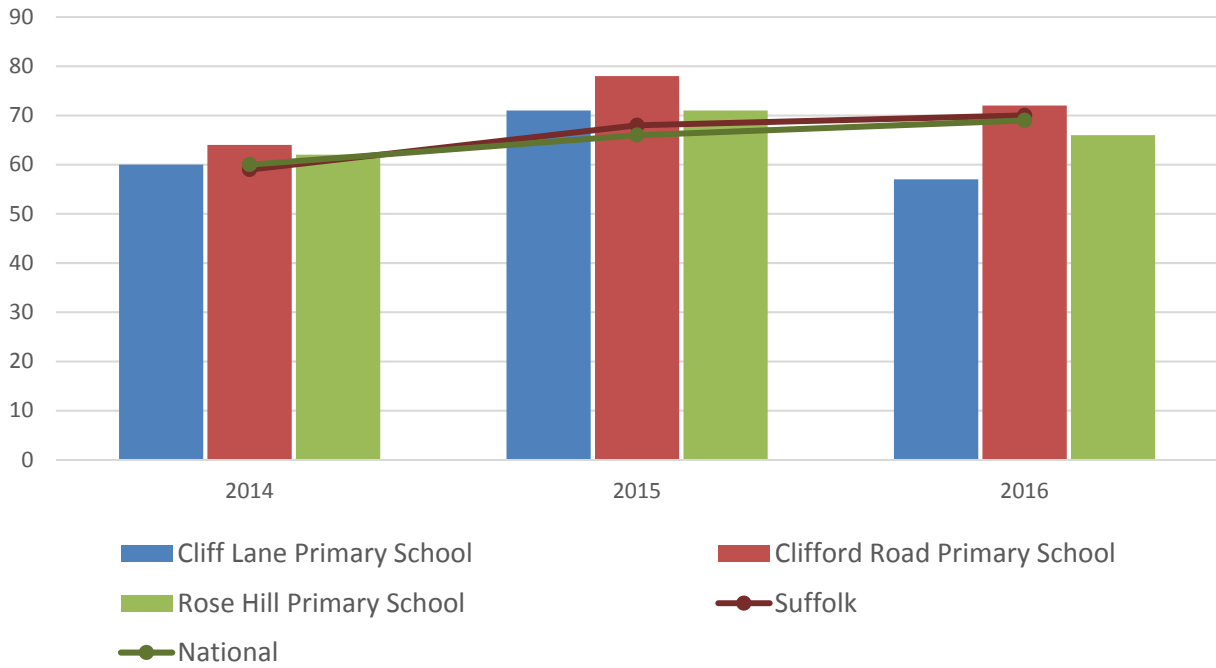
School Catchment overlaps with the Division

Name	Phase	Average cohort size at:				Latest Ofsted	Latest Ofsted Date
		Foundation Stage (age 5)	KS2 (age 11)	KS4 (age 16)	KS5 (age 18)		
Hillside Community Primary School	Primary	82	45			Not yet inspected as an Academy	
St Helen's Primary School	Primary	59	57				
Copleston High School	Upper			292	120	Good	24/04/2013
Ipswich Academy	Upper		13	153	14	Requires Improvement	18/10/2016
Northgate High School	Upper		2	222	259	Good	15/12/2015
Stoke High School - Ormiston Academy	Upper			160		Requires Improvement	11/05/2016

SCHOOL ATTAINMENT

Foundation Stage Profile (reception)

% pupils achieving Good Level of Development

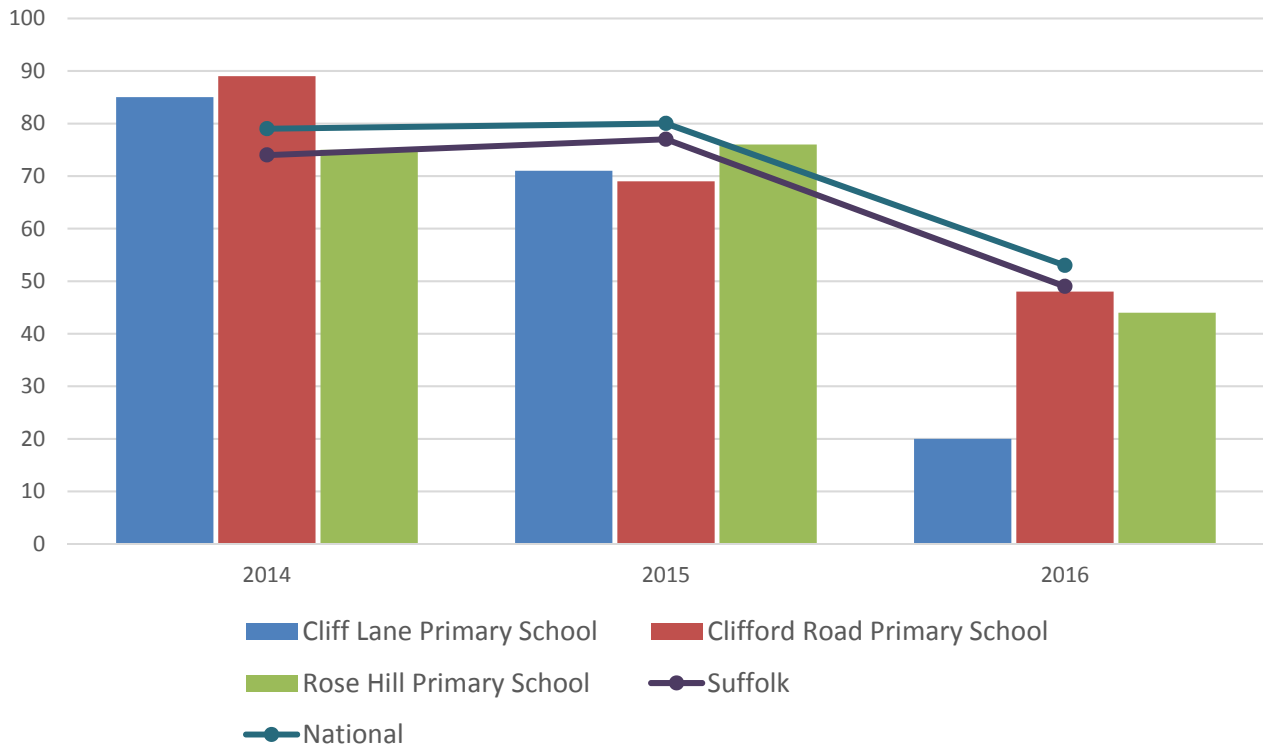


- In 2014 all three primary schools in the division had attainment levels very similar to or just above county and national averages
- In 2015, attainment for all three schools was above county and national averages, with Clifford Road showing the most improvement
- In 2016, all three schools saw a decline in attainment levels, although Clifford Road Primary achieved a level slightly above the county and national average

Key Stage 2 (age 11)

Pupil Achievement in all three subjects, Reading, Writing and Mathematics
(2014–2015 as % Level 4 or better & 2016 % Expected Level or better)

In July 2016, there was a change in the way pupil achievement is measured at the end of KS2. Prior to 2016, pupils received National Curriculum Level grades for English and Maths, with L4 being the expected level at the end of Key Stage 2. In 2016 the measure scaled score and shows whether or not a pupil has achieved the national standard for that subject

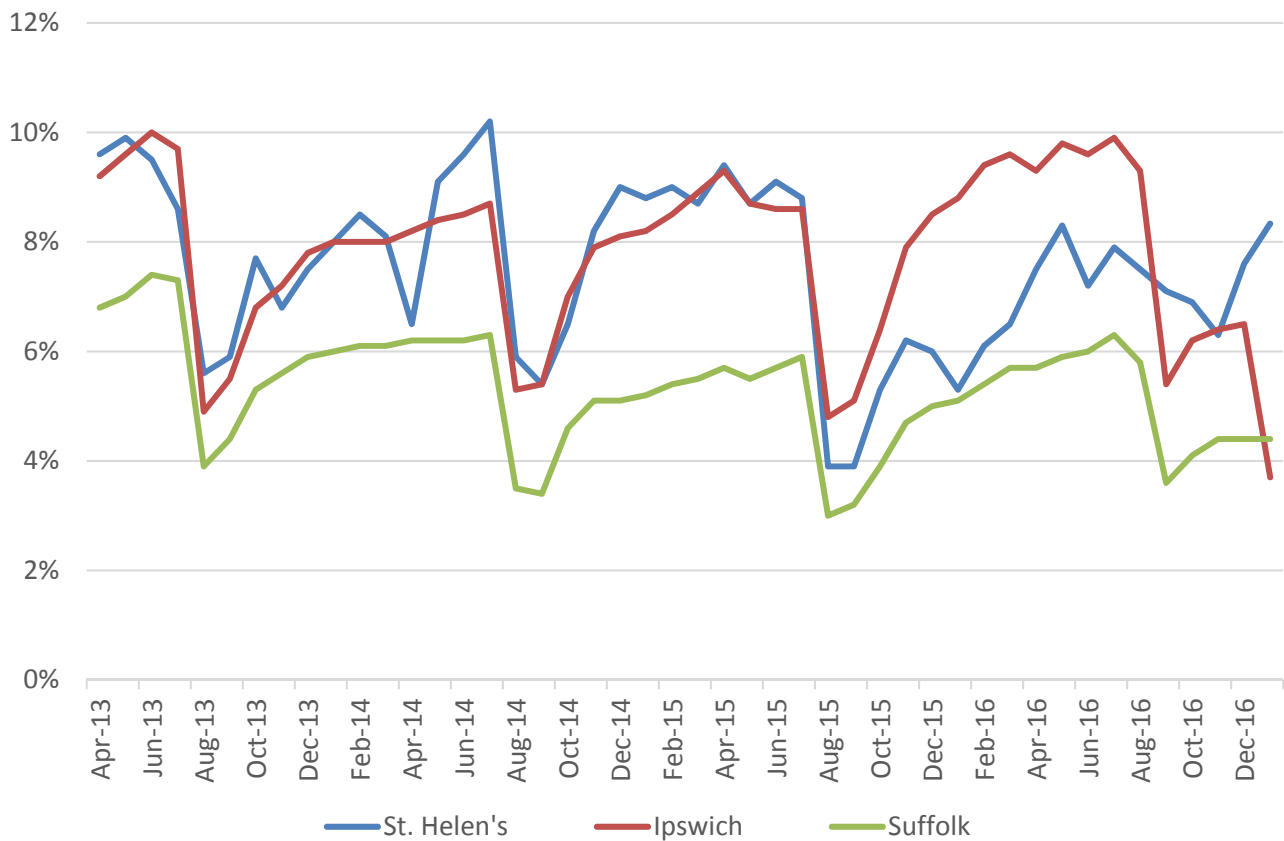


- All three schools achieved attainment levels similar to or above county and national averages in 2014
- Only Rose Hill Primary was close to achieved this level of attainment in 2015, while Cliff Lane and Clifford Road Primaries saw a decline in attainment levels
- Following the change in pupil achievement in 2016, Clifford Road Primary School had the highest attainment of the three schools in the division, just below the county and national average. Attainment at Cliff Lane and Rose Hill Primary Schools was further adrift of the average level

GCSE (Key Stage 4) (age 16)

There are no Upper schools within the St Helen's division

NEET % (NOT IN EDUCATION, EMPLOYMENT OR TRAINING)

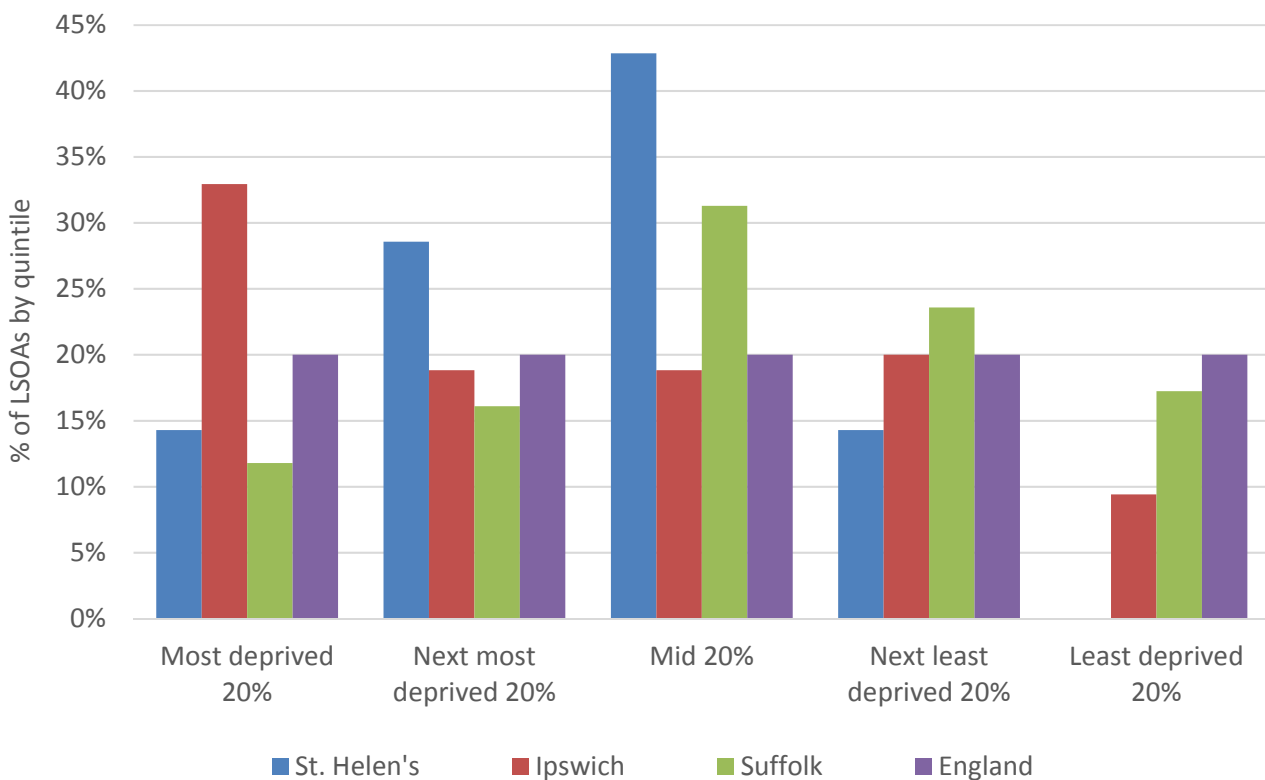


- In January 2017, 8.3% of 16-18 year olds in St Helen's (where current activity is known) were classified as NEET
- NEET levels in St Helen's have fluctuated over recent years, with levels moving both above and below the average for Ipswich
- The rate of NEETs in St Helen's is consistently above the rate for the county as a whole

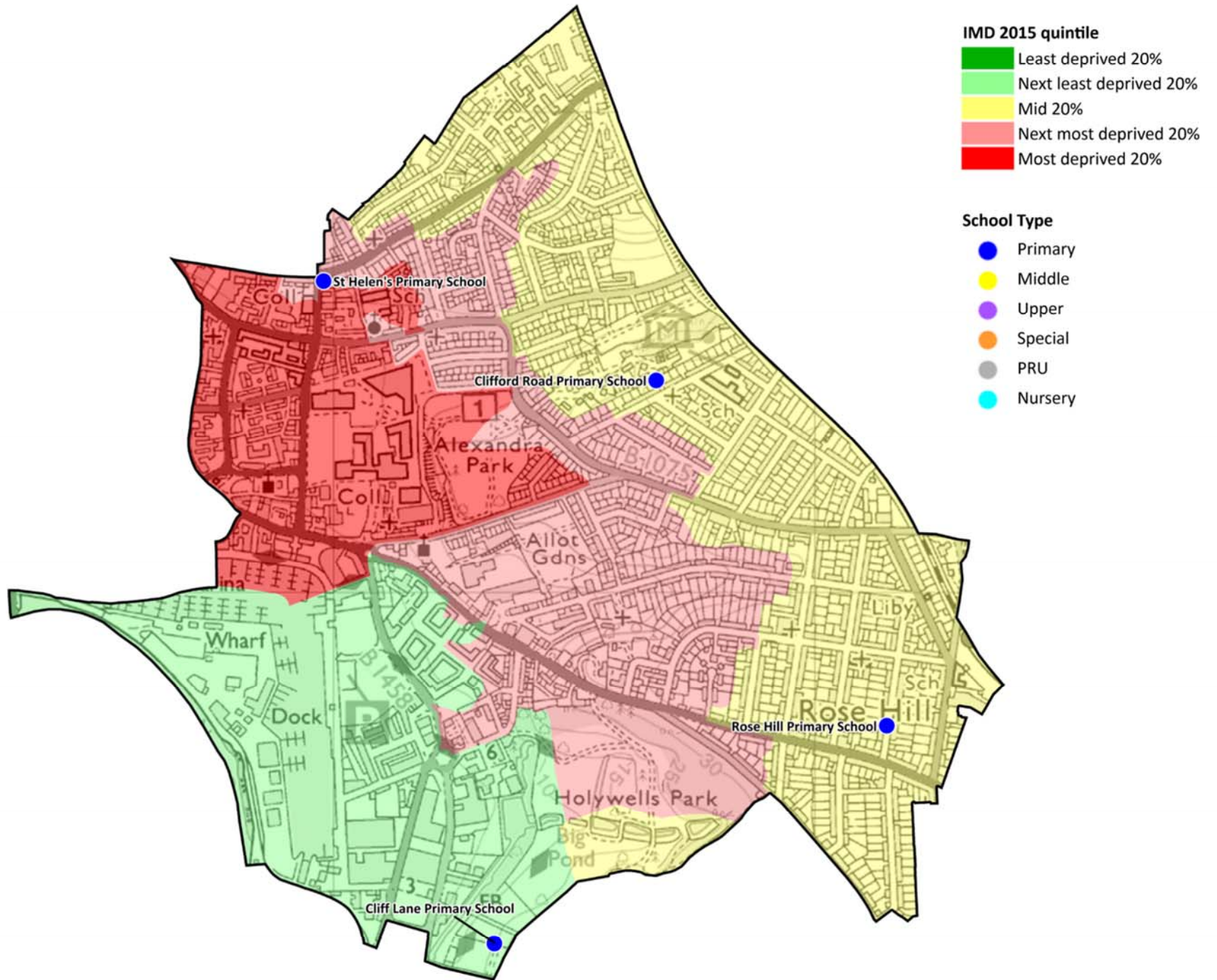
INDEX OF MULTIPLE DEPRIVATION (IMD) 2015 (SEE MAP OVERLEAF)

The IMD combines a number of indicators, chosen to cover a range of economic, social and housing issues, into a single deprivation score for each small area in England. This allows each area to be ranked relative to one another according to their level of deprivation. Small areas (Lower Super Output Areas, average population 1,500) are most usually described as being in 1 of 5 quintile bands. The bottom quintile represents the 20% of areas that are the most deprived in the country; these are shaded red on the map. The top quintile represents the least deprived areas in the country, and is shaded green.

The Index is widely used to analyse patterns of deprivation, identify areas that would benefit from special initiatives or programmes and as a tool to determine eligibility for specific funding streams.



- The IMD 2015 shows that relative deprivation levels in St Helen's are quite varied, with areas of the division distributed across four of the five deprivation quintiles
- Of the seven Lower Super Output Areas in St Helen's, three fall into the mid 20%, one is the most deprived 20%, two in the next most deprived 20% and one in the next least deprived



HEALTH

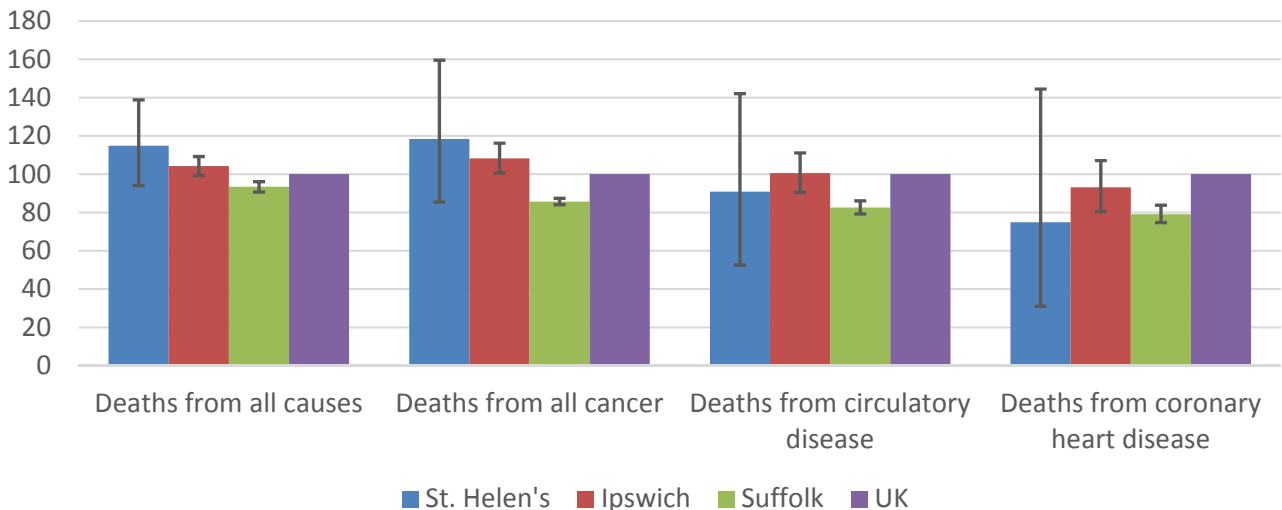
The local data used here is based on relatively small numbers. The confidence limits provide an indication of the reliability of the data. The 95% confidence intervals utilised on the chart provide a range within which there is 95% chance of the true result lying.

LIFE EXPECTANCY AT BIRTH



- Estimated life expectancy at birth for males in St Helen’s division is similar to Ipswich and the country as a whole, but slightly below that for Suffolk
- Female life expectancy at birth in the division is higher than Ipswich, Suffolk and the UK overall
- Life expectancy at birth for males in St Helen’s is 78.6 years, for females 85.5 years

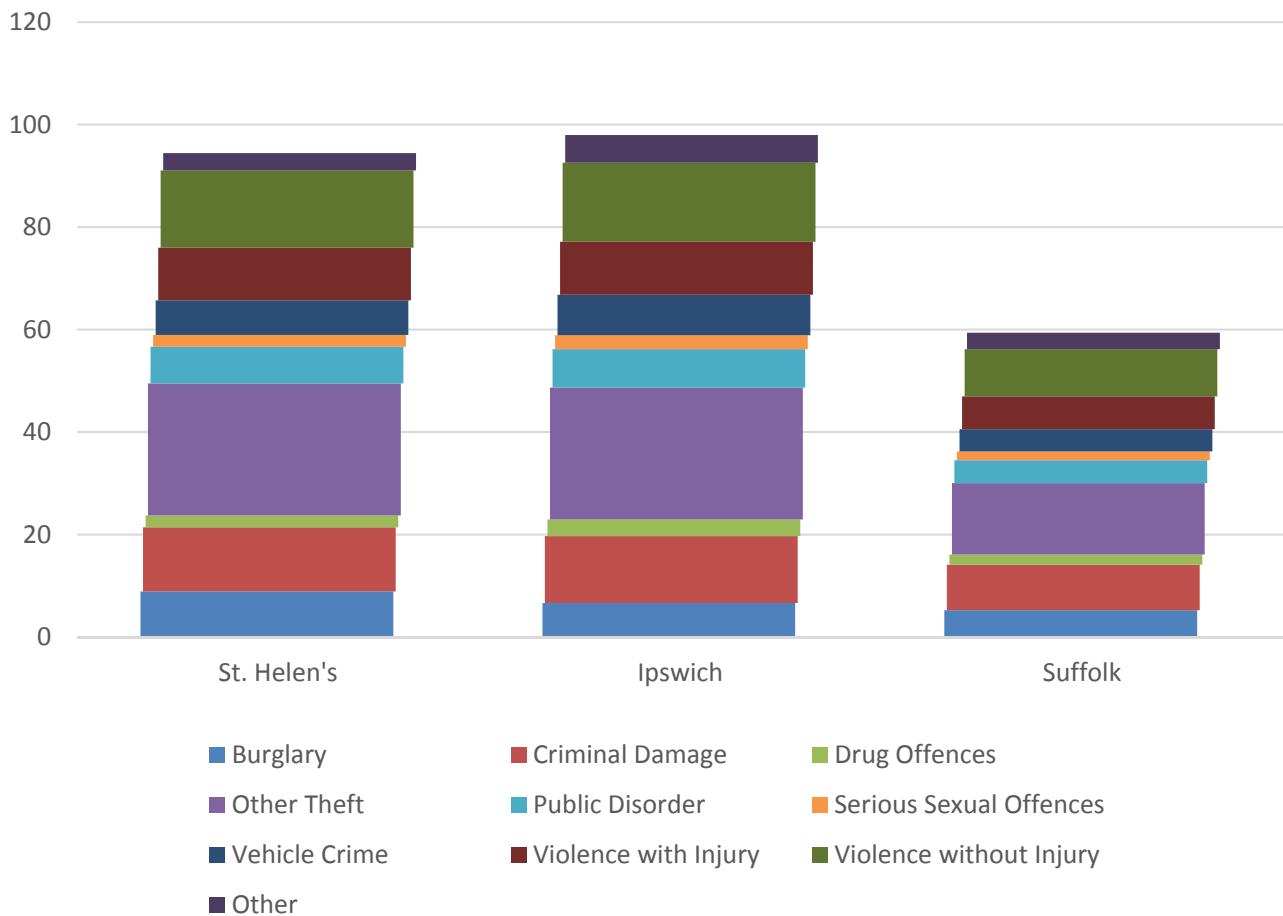
DEATHS, UNDER 75 YEARS, STANDARDISED MORTALITY RATIO



- The rate of deaths from all causes in those under 75 years in St Helen’s is higher than in Ipswich, Suffolk and nationally
- The standardised mortality ratio data shown here means that for every 100 early deaths from all causes across the UK as a whole, there are an estimated 115 comparable deaths in St Helen’s
- Deaths from circulatory disease and coronary heart disease are lower are more in line with the county average

For a complete map and list of local community assets see the [Suffolk Observatory](#)

CRIME & COMMUNITY SAFETY



- The overall crime rate in St Helen's is slightly lower than Ipswich but well above Suffolk
- In 2015, there were 94 crimes recorded per 1,000 residents in St Helen's compared to 98 in Ipswich and 59 across Suffolk as a whole
- "Other theft" is the most commonly recorded crime, followed by violence without injury and criminal damage

ADDITIONAL INFORMATION

Parishes in Division

Ipswich

DATA SOURCES

Category	Indicator	Source
Demographic Profile	Quinary population table 2015	ONS 2015 mid-year population estimates
	Population pyramid 2015	ONS 2015 mid-year population estimates
	Ethnicity 2011	ONS 2011 Census
Economy	Employment by broad industrial sector 2015	ONS Business Register and Employment Survey via NOMIS
Labour market	Job Seekers Allowance Claimant Rate (% 16-64 population) 2014-2017	DWP via NOMIS
Education	School information and attainment 2014-2016	Suffolk County Council
	% 16-18 year olds NEET (Not in Employment, Education or Training) 2013-2017	Suffolk County Council
Deprivation	Index of Multiple Deprivation 2015	Department for Communities and Local Government
Health	Life expectancy at birth 2010-2014	Public Health England
Health	Standardised mortality ratio for deaths from all causes, cancer, circulatory disease and coronary heart disease, aged under 75 2010-2014. The standardised mortality ratio is the ratio of observed deaths in the study group to expected deaths in the general population.	Public Health England
Community Safety	Recorded crime rate per 1,000 resident population 2015	Suffolk Police

For more data and information about St Helen's Electoral Division, see the Suffolk Observatory www.suffolkobservatory.info

