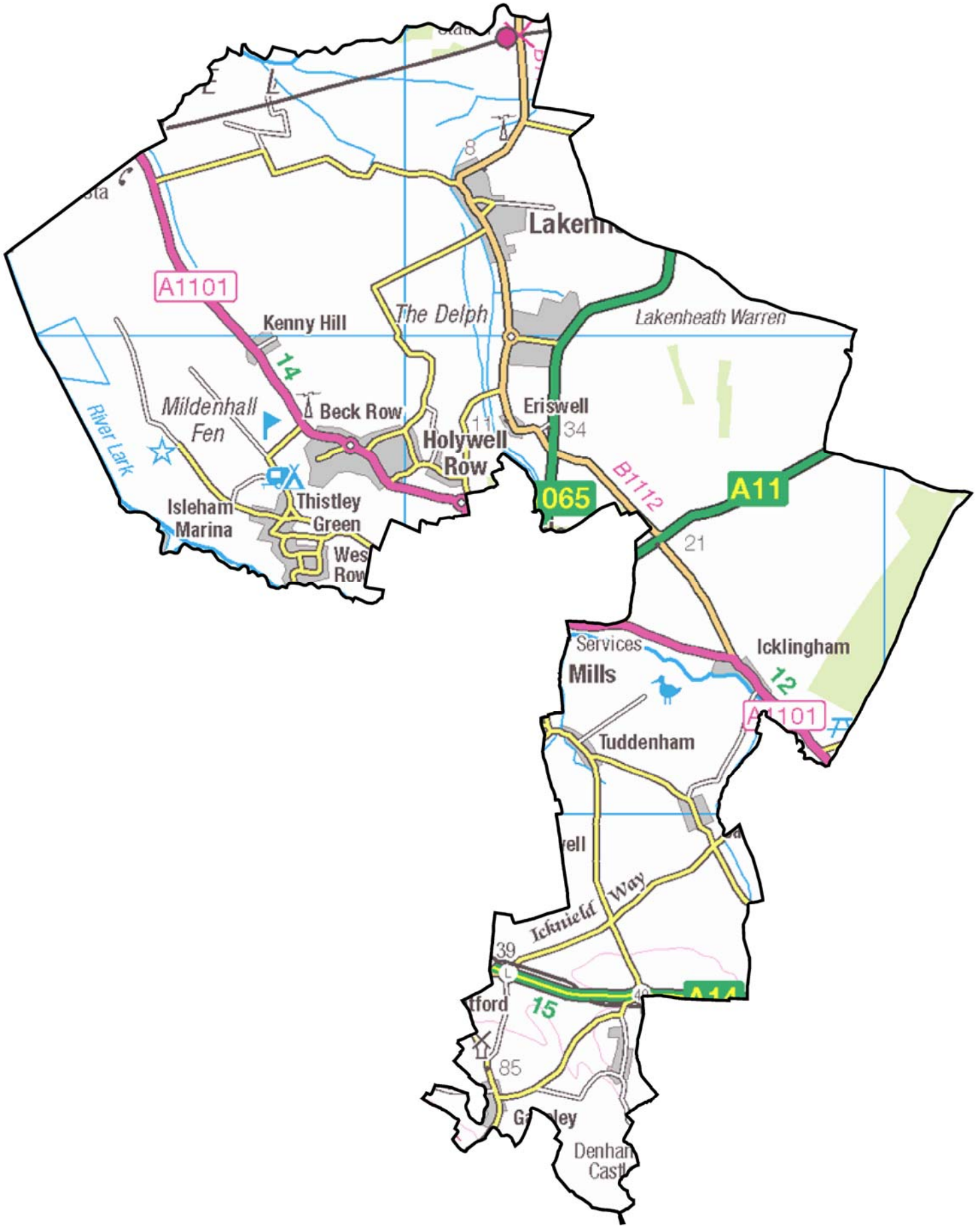


ROW HEATH

ELECTORAL DIVISION PROFILE 2017

This Division comprises Eriswell and The Rows, Icení and Lakenheath wards

www.suffolkobservatory.info



CONTENTS

- Demographic Profile: Age & Ethnicity
- Economy and Labour Market
- Schools & NEET
- Index of Multiple Deprivation
- Health
- Crime & Community Safety
- Additional Information
- Data Sources

ELECTORAL DIVISION PROFILES: AN INTRODUCTION

These profiles have been produced to support elected members, constituents and other interested parties in understanding the demographic, economic, social and educational profile of their neighbourhoods. We have used the latest data available at the time of publication.

Much more data is available from national and local sources than is captured here, but it is hoped that the profile will be a useful starting point for discussion, where local knowledge and experience can be used to flesh out and illuminate the information presented here.

The profile can be used to help look at some fundamental questions e.g.

- Does the age profile of the population match or differ from the national profile?
- Is there evidence of the ageing profile of the county in all the wards in the Division or just some?
- How diverse is the community in terms of ethnicity?
- What is the impact of deprivation on families and residents?
- Does there seem to be a link between deprivation and school performance?
- What is the breakdown of employment sectors in the area?
- Is it a relatively healthy area compared to the rest of the district or county?
- What sort of crimes are prevalent in the community?

A vast amount of additional data is available on the **Suffolk Observatory**

www.suffolkobservatory.info

The Suffolk Observatory is a free online resource that contains all Suffolk's vital statistics; it is the one-stop-shop for information and intelligence about Suffolk. Through data, reports and profiles, the Suffolk Observatory provides a comprehensive picture of the County. It is a great source for useful facts and figures that can be used for writing reports and presentations, informing strategic and business planning, preparing funding applications or supporting academic research. Data is presented around the key themes of education and skills, economy and employment, health and care, population, deprivation, housing, environment, transport and travel and crime. All areas of the county are covered, right down to district, ward and parish level, with information easily accessible in a variety of formats. You can also build your own reports by different themes and topics.

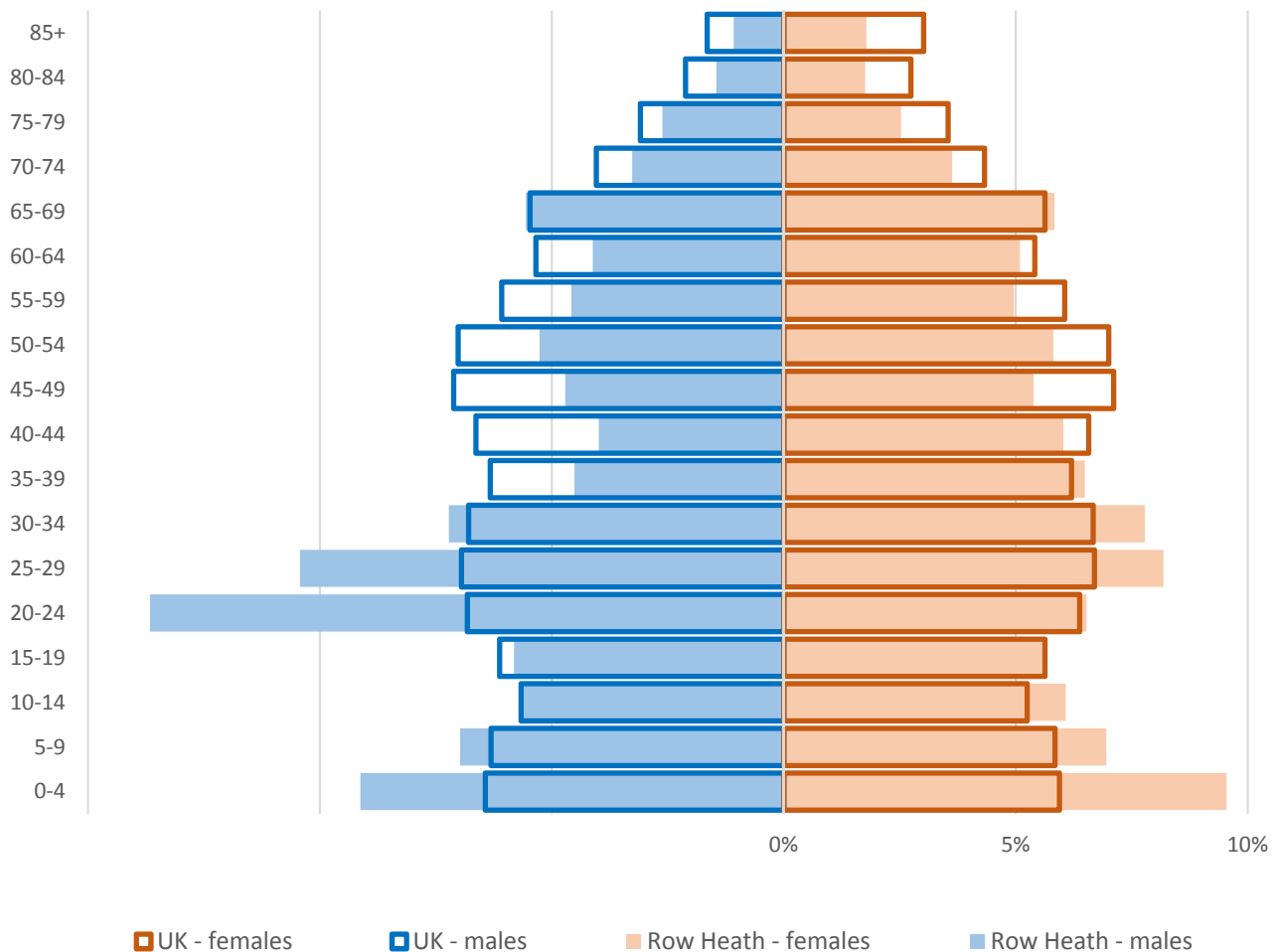
Technical Notes:

1. Where Electoral Divisions do not exactly match ward boundaries, we have adopted a "best fit" approach to produce a dataset.
2. District, county and national level data is provided where possible to provide a context for comparisons.

DEMOGRAPHIC PROFILE - AGE

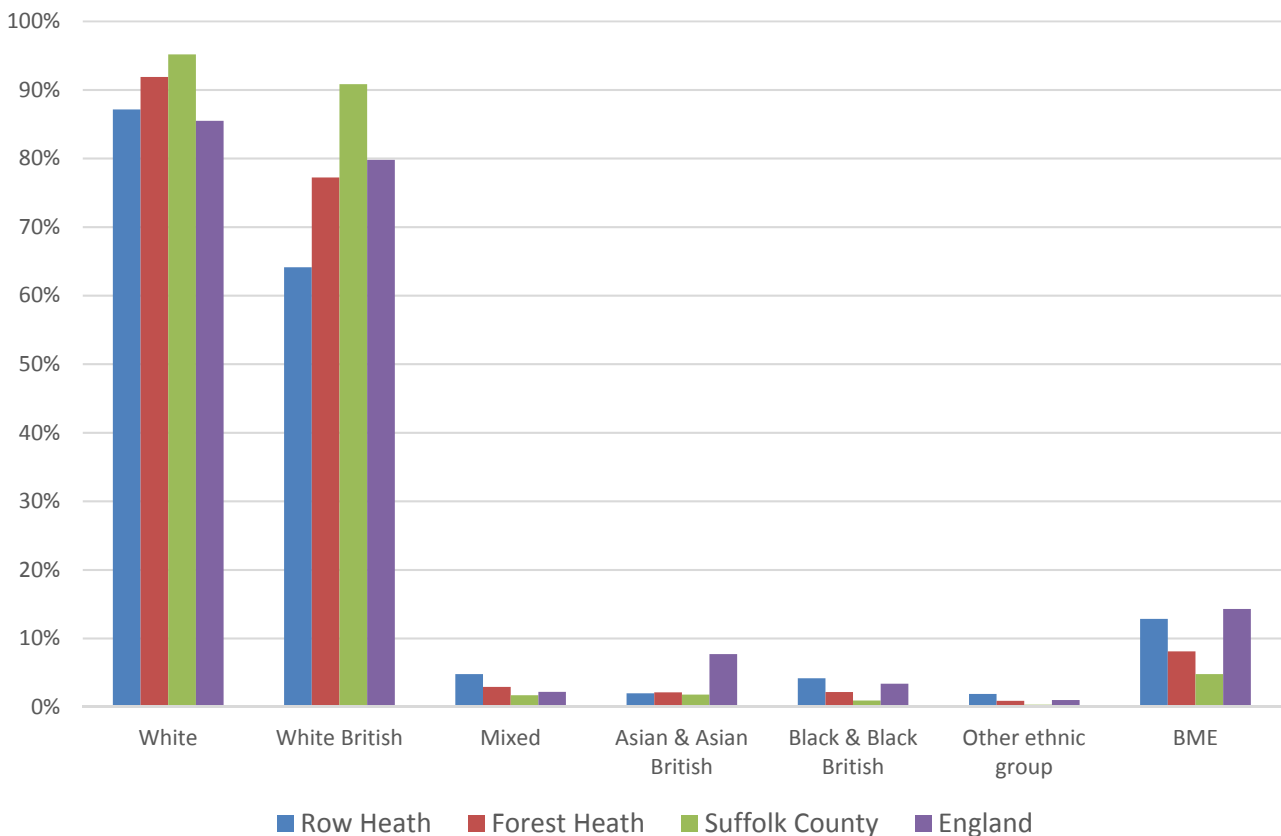
In mid-2015 the population of Row Heath stood at 16,398, an increase of 8.3% since the 2011 Census. The age structure of the component wards and the division as a whole is set out below.

	Row Heath Division	Eriswell and The Rows	Iceni	Lakenheath
All Ages	16,398	9,113	1,780	5,505
0-4	1,529	908	100	521
5-9	1,142	645	107	390
10-14	959	546	94	319
15-19	938	527	95	316
20-24	1,684	1,225	53	406
25-29	1,535	1,097	79	359
30-34	1,228	782	107	339
35-39	894	585	87	222
40-44	813	398	131	284
45-49	825	390	161	274
50-54	906	416	116	374
55-59	781	386	112	283
60-64	751	325	129	297
65-69	933	390	152	391
70-74	564	196	116	252
75-79	422	141	69	212
80-84	262	84	36	142
85+	232	72	36	124



- The age pyramid for Row Heath shows a far higher than average proportion of people between the ages of 20 and 34, as well as people aged under 10
- With the high number of under 5s especially, the number of young children requiring school places looks set to increase in the coming years
- The most common age group in Row Heath is 20-24 year olds, followed by 25-29 year olds and 0-4 year olds
- There is a much lower than average number of people over 35

ETHNICITY

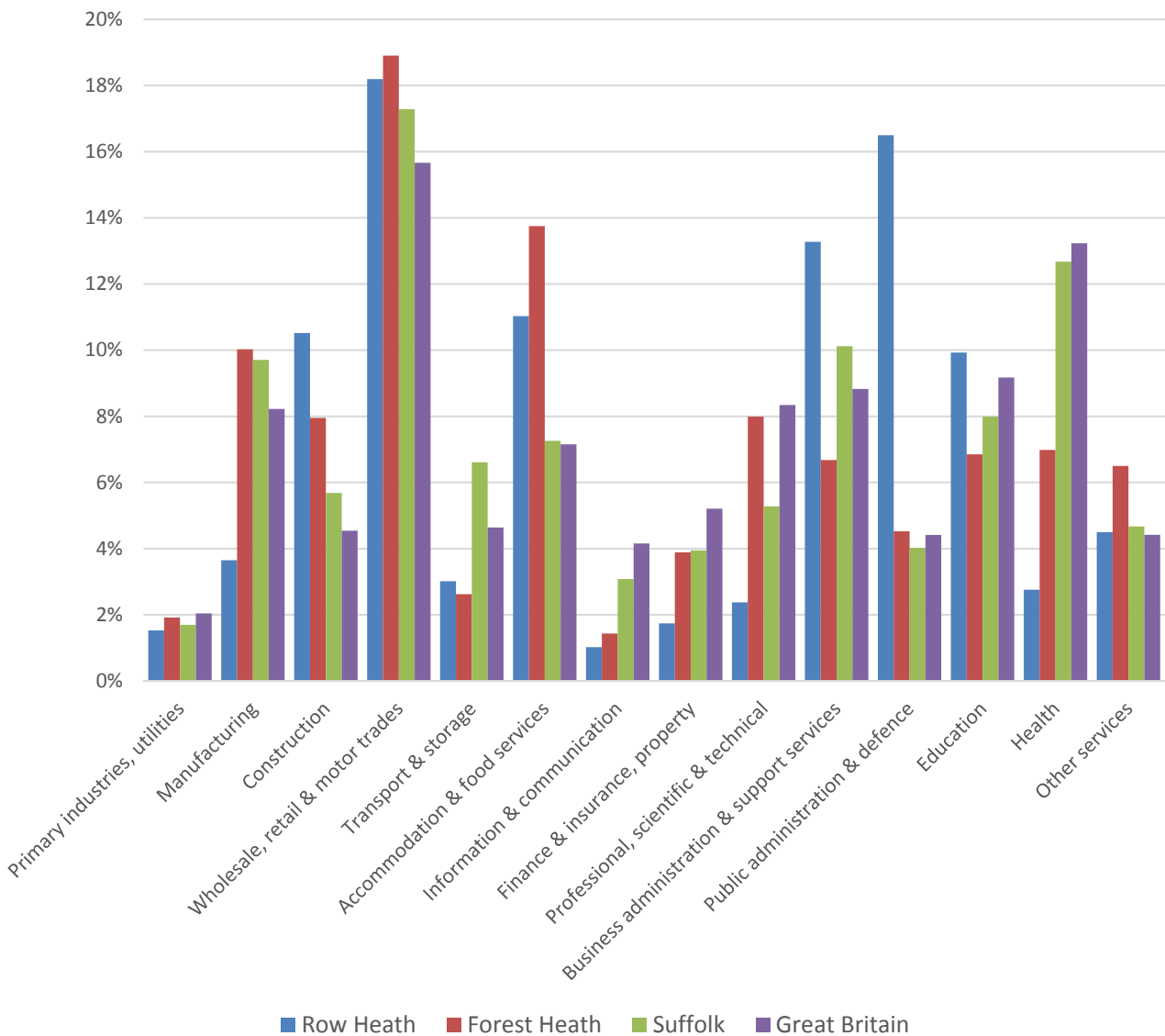


- According to the latest data (2011 Census), 87.1% of the population of Row Heath are white
- 12.9% of the Division population are those of black or minority ethnic origin in the division
- Row Heath has a very different diversity profile to Forest Heath district, and generally higher proportions of minority ethnic groups than Suffolk as a whole

	All people		White		White British		Mixed		Asian and Asian British		Black and Black British		Other Ethnic Group		Black or Minority Ethnic Total	
	Count	%	Count	%	Count	%	Count	%	Count	%	Count	%	Count	%	Count	%
Row Heath	15,140		13,194	87.1	9,711	64.1	723	4.8	300	2.0	635	4.2	288	1.9	1,946	12.9
Forest Heath	59,748		54,907	91.9	46,142	77.2	1,744	2.9	1,263	2.1	1,296	2.2	538	0.9	4,841	8.1
Suffolk	728,163		693,195	95.2	661,458	90.8	12,472	1.7	13,131	1.8	6,854	0.9	2,511	0.3	34,968	4.8
England & Wales				86.0		80.5		2.2		6.7		2.8		0.4		12.1

ECONOMY

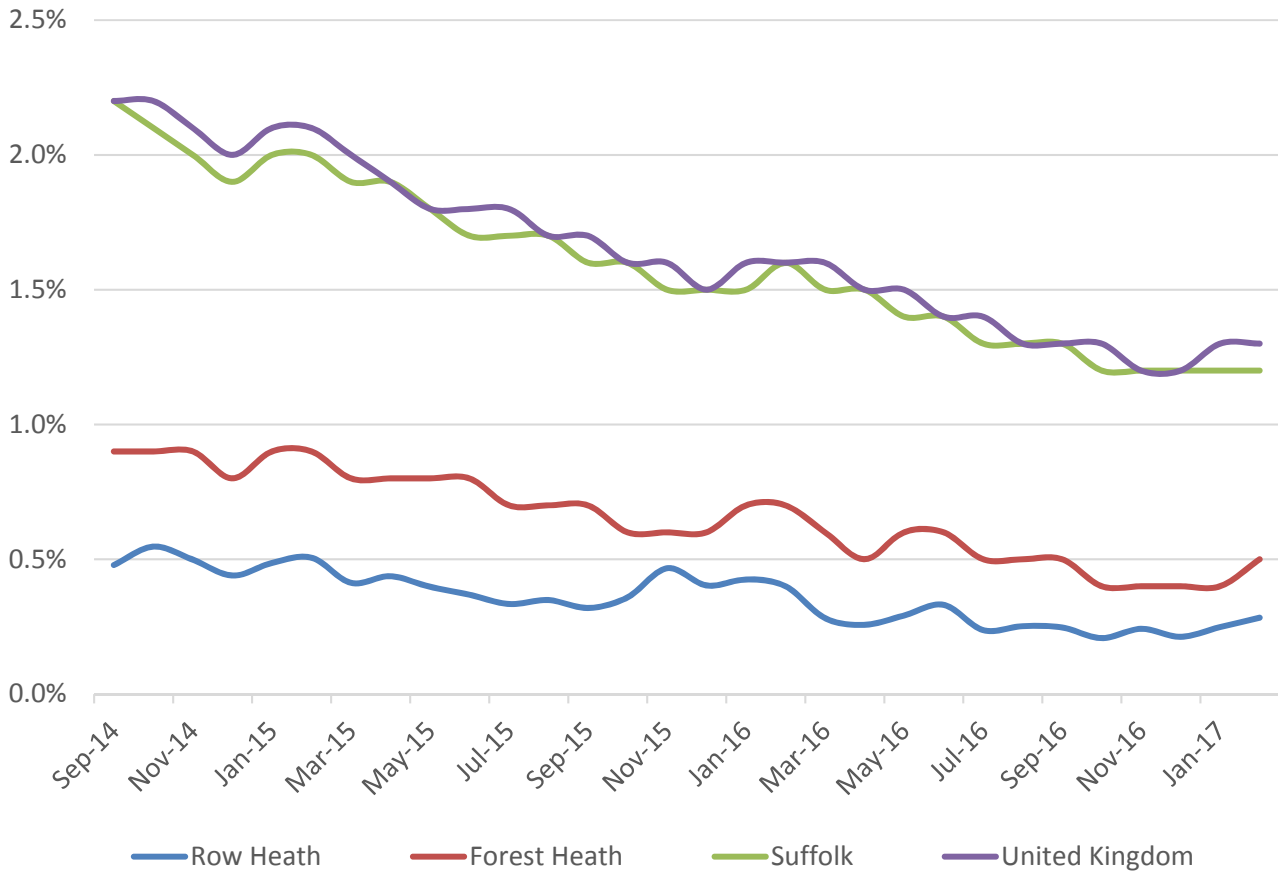
There are 2,500 people employed in Row Heath.



- The key employment sectors in Row Heath are wholesale, retail and motor trades, public administration and defence, business administration and support services, accommodation and food services, construction and education
- These six sectors account for near eight out of every ten jobs in the division

LABOUR MARKET

JOB SEEKERS ALLOWANCE CLAIMANT RATE



- Row Heath has seen a general decline in the Job Seekers Allowance claimant rate over the past three years
- The claimant unemployment rate in Row Heath is consistently below the Forest Heath, Suffolk and UK averages
- In percentage terms, around 0.3% of the working age population (aged 16-64) were claiming JSA in the division according to the latest data from February 2017, around a quarter of the level claiming at county and national levels

SCHOOLS

SCHOOL INFORMATION

Schools in the Division

Name	Phase	Average cohort size at:		Latest Ofsted	Latest Ofsted Date
		Foundation Stage (age 5)	KS2 (age 11)		
Beck Row Primary School	Primary	50	17	Inadequate	21/07/2016
Lakenheath CP School	Primary	48	40	Good	07/05/2015
West Row CP School	Primary	39	20	Good	22/01/2013
Mill Meadow	PRU			Inadequate	26/11/2015

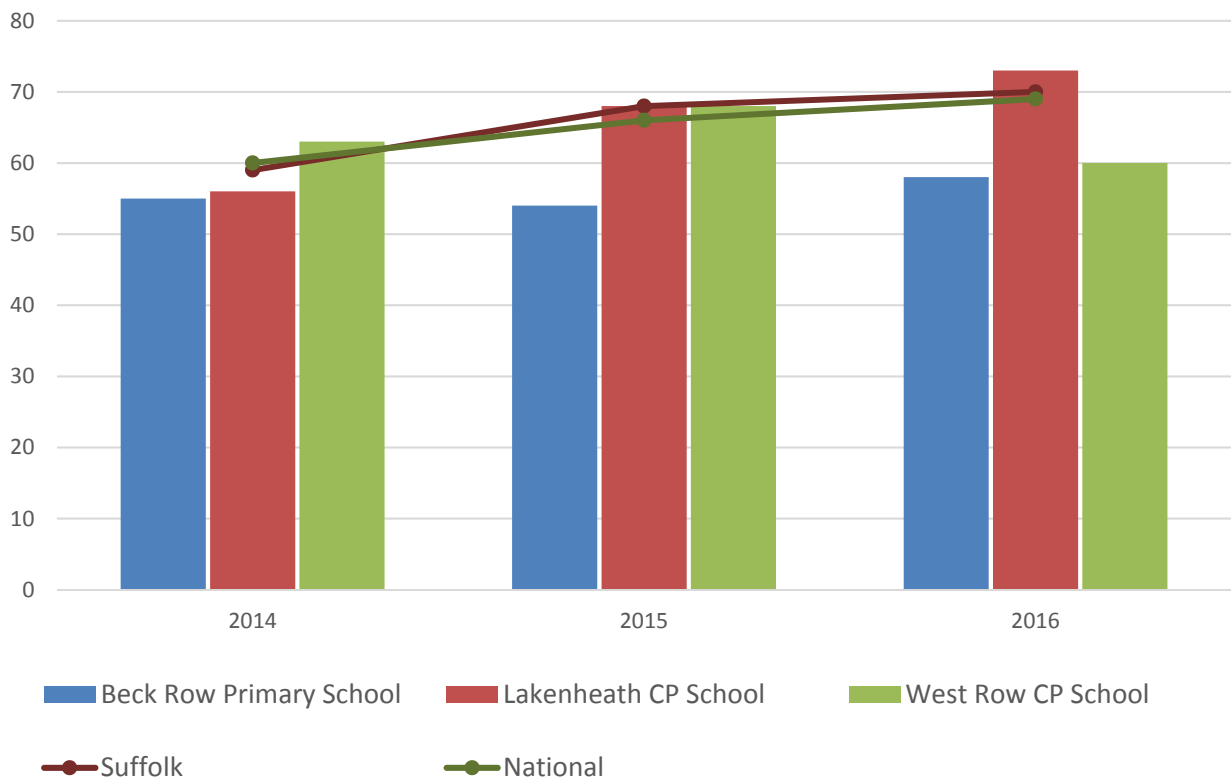
School Catchment overlaps with the Division

Name	Phase	Average cohort size at:				Latest Ofsted	Latest Ofsted Date
		Foundation Stage (age 5)	KS2 (age 11)	KS4 (age 16)	KS5 (age 18)		
Elveden Church of England Primary Academy	Primary	11	11			Outstanding	02/02/2016
Great Heath Academy	Primary	75	36			Not yet inspected as an Academy	
Moulton CEVCP School	Primary	29	27			Good	16/03/2016
Sexton's Manor CP School	Primary	29				Good	07/05/2014
St Christopher's CEVCP School	Primary					Good	27/06/2013
St Mary's CoE Academy	Primary	60	55			Requires Improvement	08/07/2015
Westley Middle School	Middle		118			Good	13/12/2016
County Upper School	Upper			245	102	Outstanding	18/09/2013
Mildenhall College Academy	Upper		13	192	52	Good	10/03/2015
Newmarket Academy	Upper			115	17	Not yet inspected as an Academy	

SCHOOL ATTAINMENT

Foundation Stage Profile (reception)

% pupils achieving Good Level of Development (GLD)

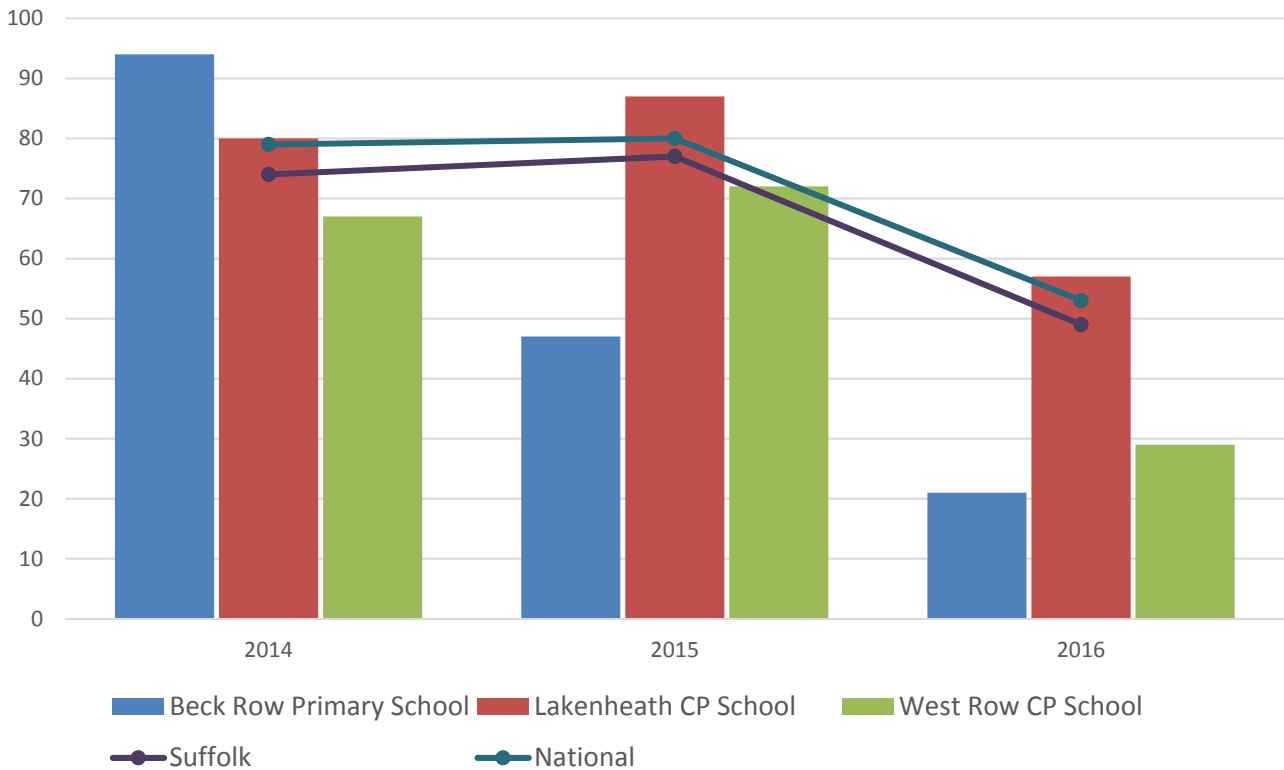


- Foundation Stage attainment at schools in this division has been variable from 2014 to 2016
- Lakenheath CP School saw improving attainment throughout the period, with the percentage of pupils achieving a Good Level of Development above the county and national average by 2016
- Attainment at Beck Row Primary School has been consistently below average over the past three years
- Foundation Stage attainment at West Row CP School was high in 2014 and 2015 but dipped below average in 2016

Key Stage 2 (Age 11)

Pupil Achievement in all three subjects, Reading, Writing and Mathematics
(2014 – 2015 as % Level 4 or better) & (2016 % Expected Level or better)

In 2014 and 2015 pupils received National Curriculum Level grades for English and Maths, with L4 being the expected level at the end of Key Stage 2. In 2016 the measure scaled score and shows whether or not a pupil has achieved the national standard for that subject

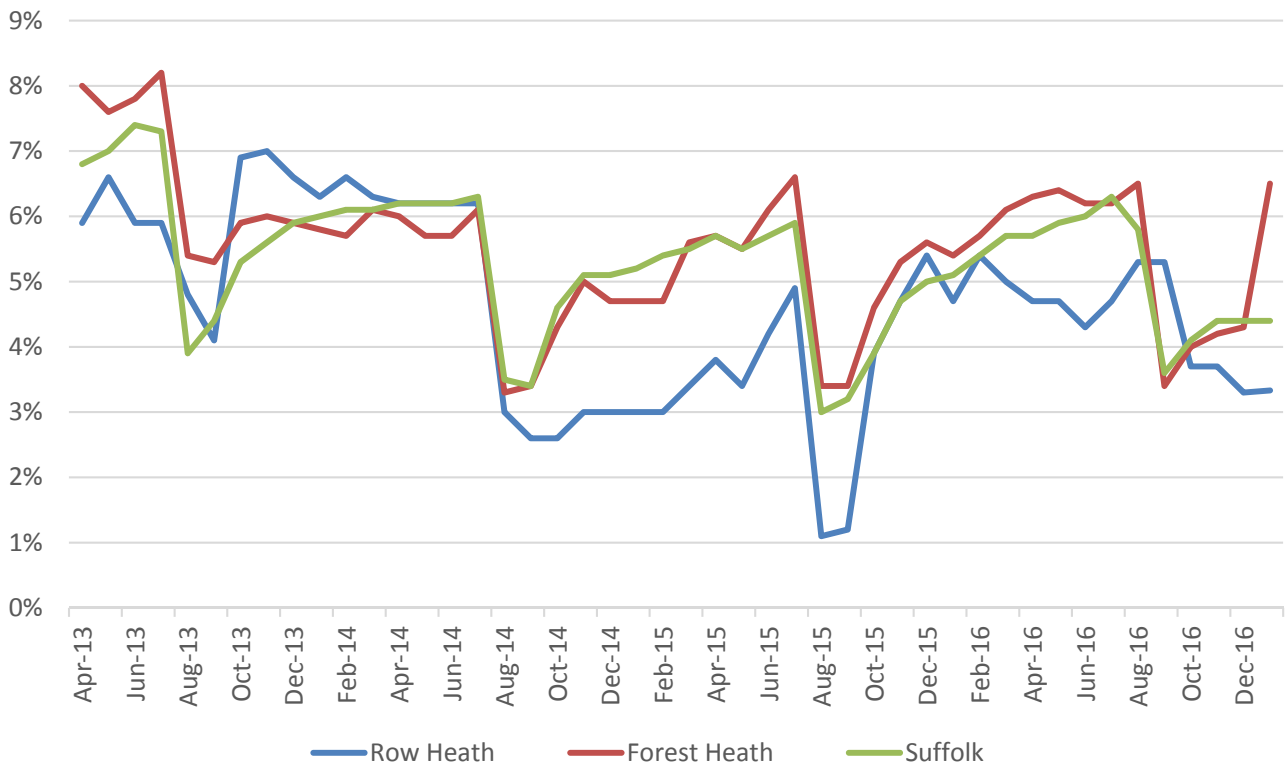


- At Key Stage 2 level, Lakenheath CP School has seen consistently above average attainment in each of the past three years
- KS2 attainment at Beck Row Primary School was very high in 2014 but this was followed by well below average results in 2015 and 2016
- At West Row CP School, KS2 attainment has been consistently below the Suffolk and national averages

Key Stage 4 (Age 16) & Key Stage 5 (Age 18)

There are no Upper schools within the Division

NEET % (NOT IN EDUCATION, EMPLOYMENT OR TRAINING)

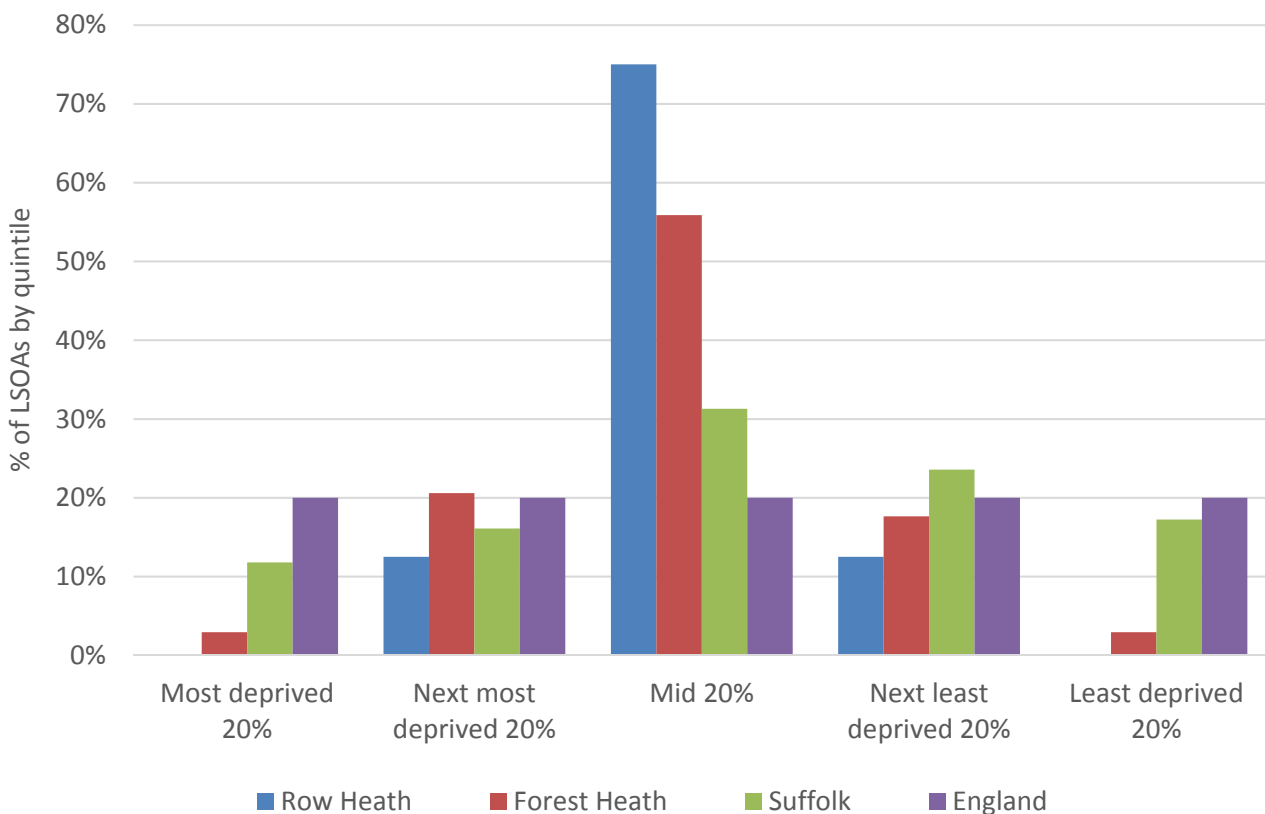


- In February 2017, 3.3% of 16-18 year olds were classified as NEET in Row Heath (where current activity is known), this is substantially below the district and county averages
- Since August 2014, NEET levels in Row Heath have tended to be below the district and county levels, though the figures fluctuate considerably

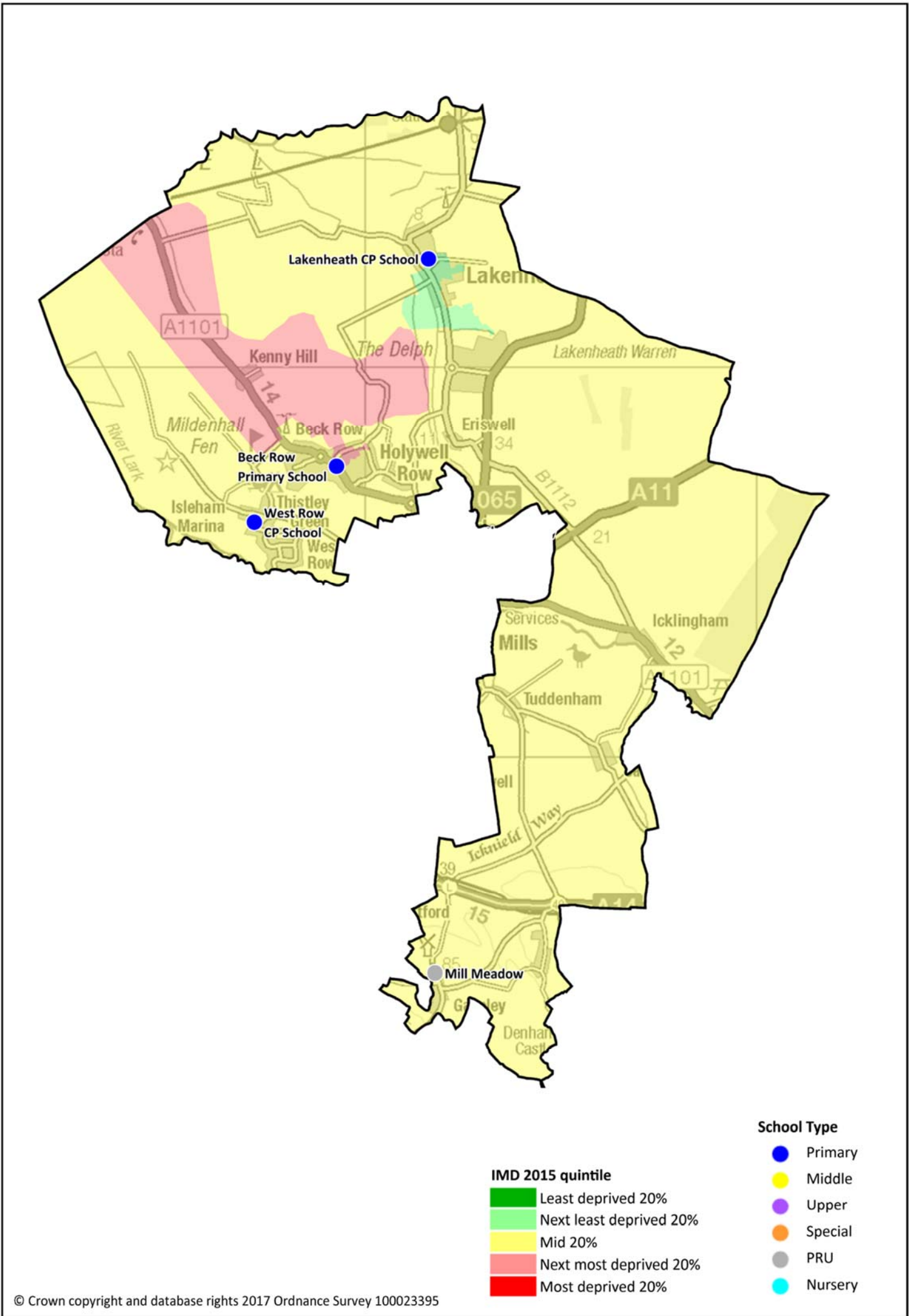
INDEX OF MULTIPLE DEPRIVATION (IMD) 2015 (SEE MAP OVERLEAF)

The IMD combines a number of indicators, chosen to cover a range of economic, social and housing issues, into a single deprivation score for each small area in England. This allows each area to be ranked relative to one another according to their level of deprivation. Small areas (Lower Super Output Areas, average population 1,500) are most usually described as being in 1 of 5 quintile bands. The bottom quintile represents the 20% of areas that are the most deprived in the country; these are shaded red on the map. The top quintile represents the least deprived areas in the country, and is shaded green.

The Index is widely used to analyse patterns of deprivation, identify areas that would benefit from special initiatives or programmes and as a tool to determine eligibility for specific funding streams.



- The IMD 2015 shows that relative deprivation levels in Row Heath are moderate and largely uniform across the division
- No parts of the of the division are among the least or most deprived 20% of areas nationally
- Of the eight Lower Layer Super Output Areas (LSOA) comprising the division, six (75%) are ranked in the mid deprivation quintile (20%), with just a single one ranked in each of the next most and next least deprived quintiles



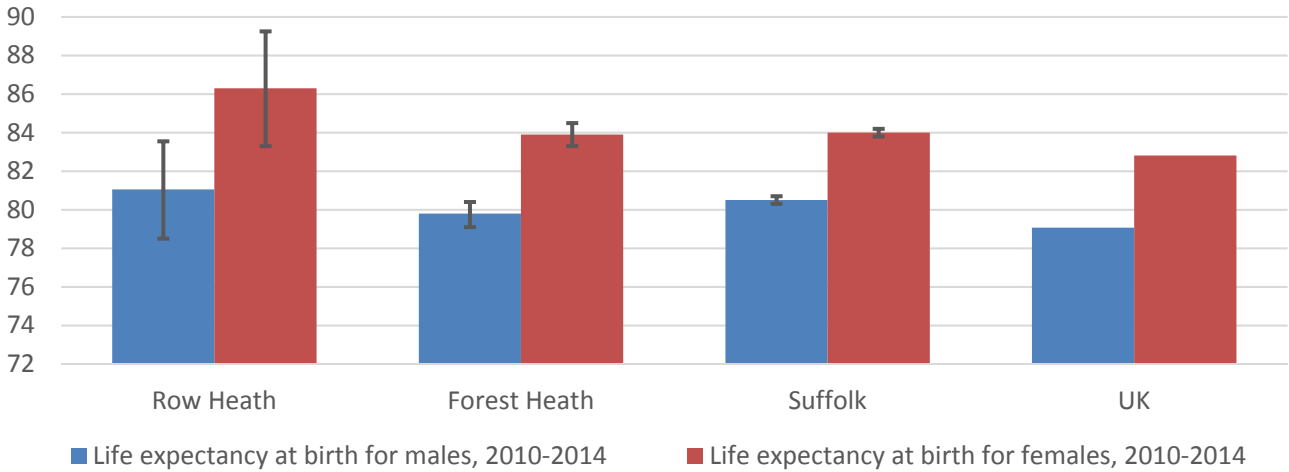
- School Type**
- Primary
 - Middle
 - Upper
 - Special
 - PRU
 - Nursery

- IMD 2015 quintile**
- Least deprived 20%
 - Next least deprived 20%
 - Mid 20%
 - Next most deprived 20%
 - Most deprived 20%

HEALTH

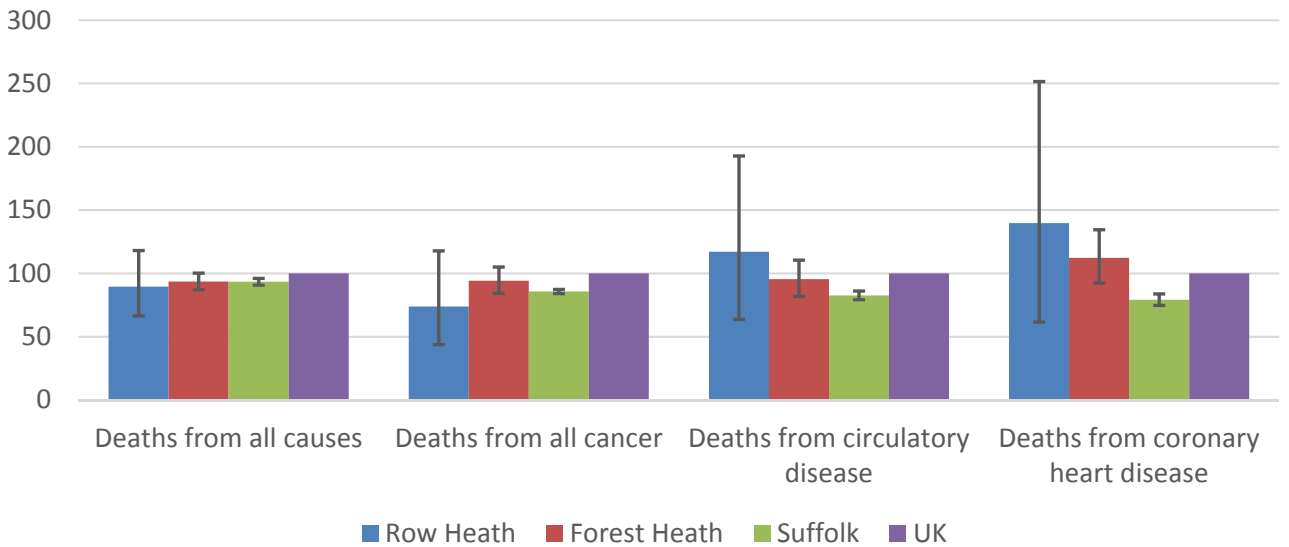
The local data used here is based on relatively small numbers. The confidence limits provide an indication of the reliability of the data. The 95% confidence intervals utilised on the chart provide a range within which there is 95% chance of the true result lying.

LIFE EXPECTANCY AT BIRTH



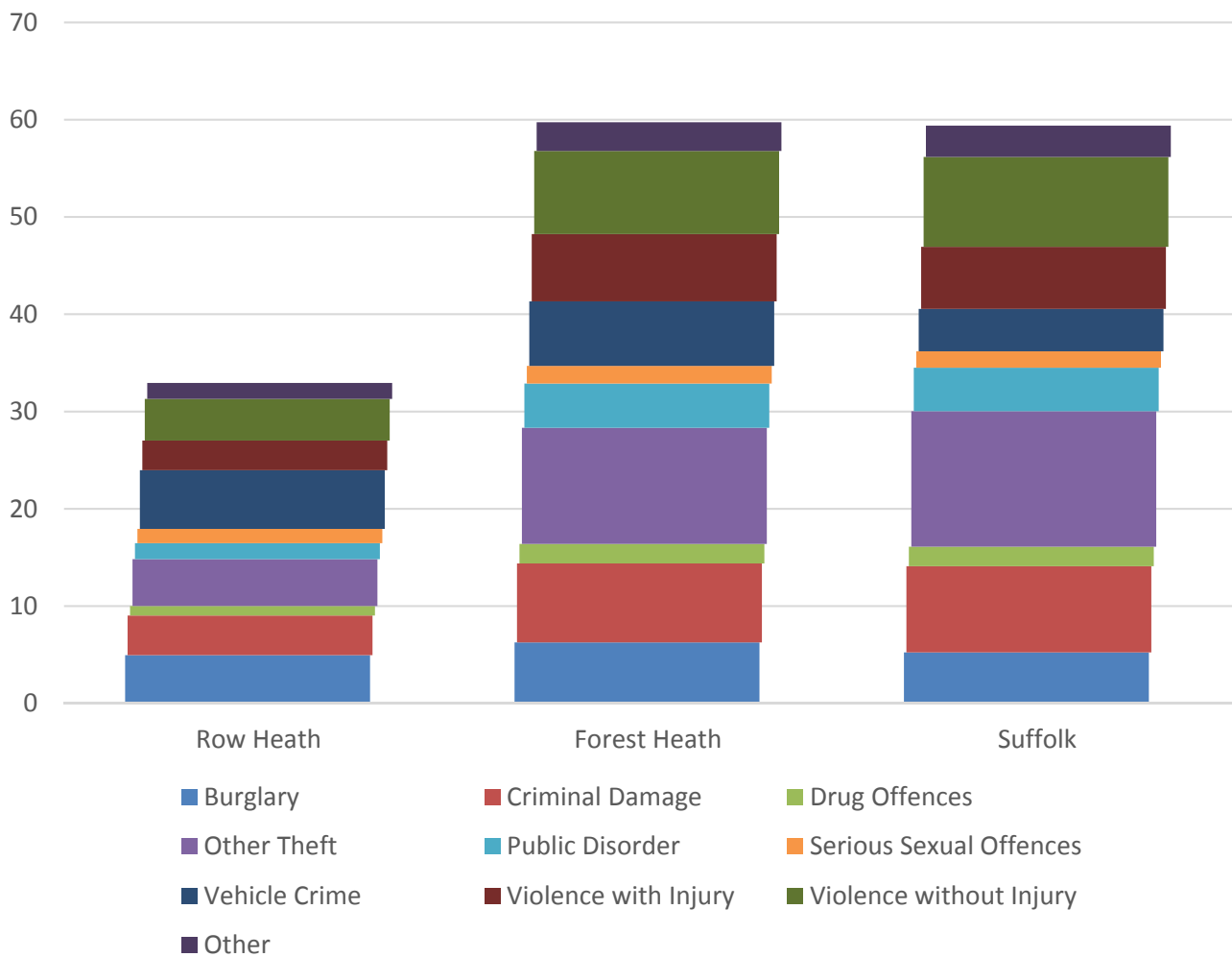
- Life expectancy estimates for Row Heath are above the district, county and national averages for both males and females
- The difference between life expectancy for males and females in the division is approximately five years, a greater disparity than seen nationally

DEATHS, UNDER 75 YEARS, STANDARDISED MORTALITY RATIO



- The rate of early deaths from all causes in Row Heath is marginally below the district, county, and national averages
- The standardised mortality ratio data shown here means that for every 100 early deaths from all causes across the UK as a whole, there are an estimated 89 comparable deaths in Row Heath
- These estimates suggest that the prevalence of early deaths from cancer in the division are fairly low, while early deaths from circulatory and coronary heart diseases are above average

CRIME & COMMUNITY SAFETY



- Row Heath shows a much lower rate of crime compared to the county and district rates, with 33 crimes per 1,000 residents recorded in 2015
- Vehicle crime, burglary and “other theft” are the most commonly recorded types of crime in the division
- Vehicle crime is the only one type of crime recorded at a higher rate in Row Heath than across Suffolk as a whole, with 6 incidents per 1,000 residents compared to 4.4 across the county

ADDITIONAL INFORMATION

Parishes in Division

Beck Row, Holywell Row and Kenny Hill	Icklingham
Cavenham	Lakenheath
Eriswell	Mildenhall
Gazeley	Tuddenham
Higham	

DATA SOURCES

Category	Indicator	Source
Demographic Profile	Quinary population table 2015	ONS 2015 mid-year population estimates
	Population pyramid 2015	ONS 2015 mid-year population estimates
	Ethnicity 2011	ONS 2011 Census
Economy	Employment by broad industrial sector 2015	ONS Business Register and Employment Survey via NOMIS
Labour market	Job Seekers Allowance Claimant Rate (% 16-64 population) 2014-2017	DWP via NOMIS
Education	School information and attainment 2014-2016	Suffolk County Council
	% 16-18 year olds NEET (Not in Employment, Education or Training) 2013-2017	Suffolk County Council
Deprivation	Index of Multiple Deprivation 2015	Department for Communities and Local Government
Health	Life expectancy at birth 2010-2014	Public Health England
Health	Standardised mortality ratio for deaths from all causes, cancer, circulatory disease and coronary heart disease, aged under 75 2010-2014. The standardised mortality ratio is the ratio of observed deaths in the study group to expected deaths in the general population.	Public Health England
Community Safety	Recorded crime rate per 1,000 resident population 2015	Suffolk Police

For more data and information about Row Heath Electoral Division, see the Suffolk Observatory www.suffolkobservatory.info

