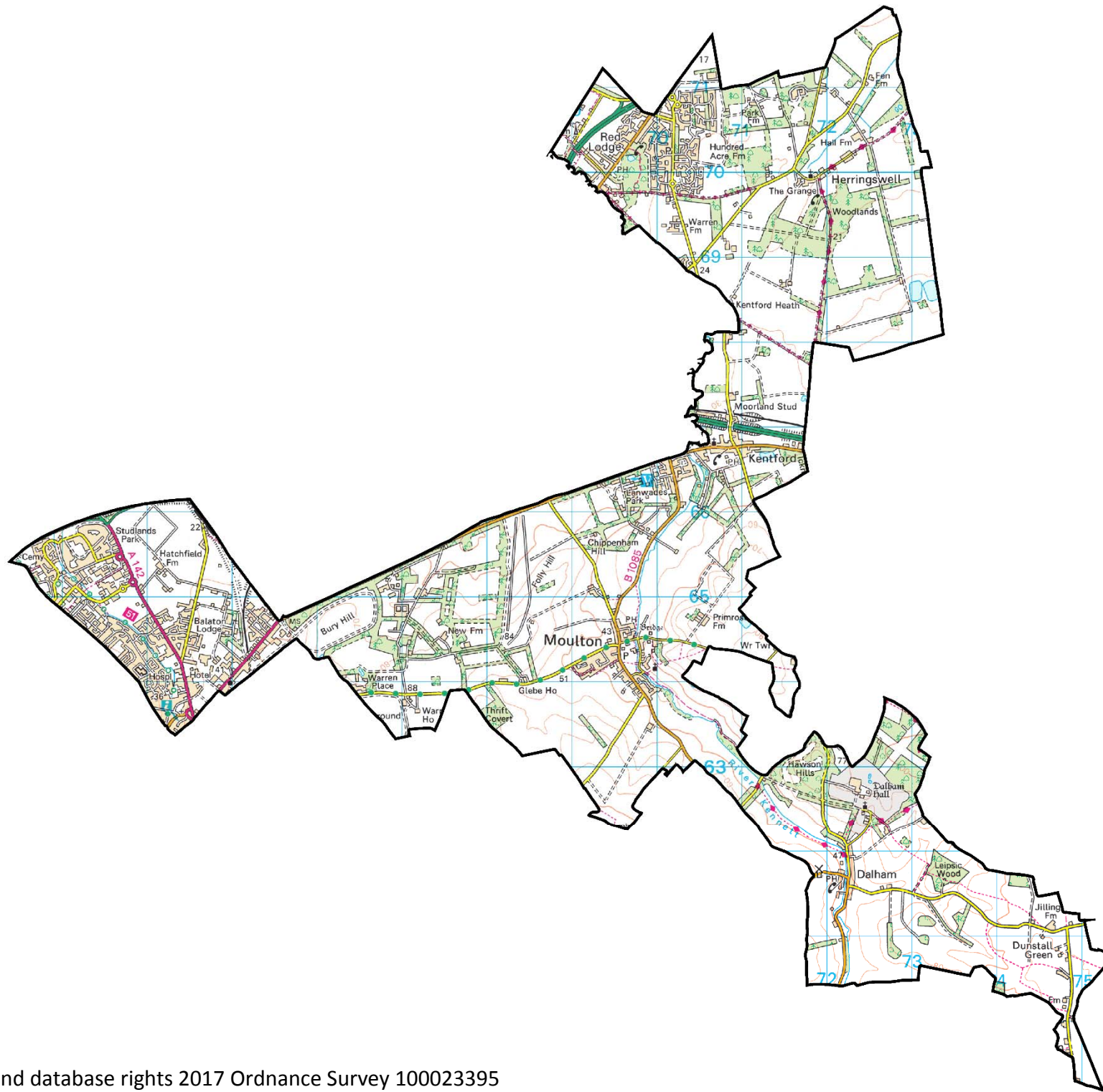


NEWMARKET & RED LODGE

ELECTORAL DIVISION PROFILE 2017

This Division comprises Red Lodge, Severals and South wards

www.suffolkobservatory.info



CONTENTS

- Demographic Profile: Age & Ethnicity
- Economy and Labour Market
- Schools & NEET
- Index of Multiple Deprivation
- Health
- Crime & Community Safety
- Additional Information
- Data Sources

ELECTORAL DIVISION PROFILES: AN INTRODUCTION

These profiles have been produced to support elected members, constituents and other interested parties in understanding the demographic, economic, social and educational profile of their neighbourhoods. We have used the latest data available at the time of publication.

Much more data is available from national and local sources than is captured here, but it is hoped that the profile will be a useful starting point for discussion, where local knowledge and experience can be used to flesh out and illuminate the information presented here.

The profile can be used to help look at some fundamental questions e.g.

- Does the age profile of the population match or differ from the national profile?
- Is there evidence of the ageing profile of the county in all the wards in the Division or just some?
- How diverse is the community in terms of ethnicity?
- What is the impact of deprivation on families and residents?
- Does there seem to be a link between deprivation and school performance?
- What is the breakdown of employment sectors in the area?
- Is it a relatively healthy area compared to the rest of the district or county?
- What sort of crimes are prevalent in the community?

A vast amount of additional data is available on the **Suffolk Observatory**

www.suffolkobservatory.info

The Suffolk Observatory is a free online resource that contains all Suffolk's vital statistics; it is the one-stop-shop for information and intelligence about Suffolk. Through data, reports and profiles, the Suffolk Observatory provides a comprehensive picture of the County. It is a great source for useful facts and figures that can be used for writing reports and presentations, informing strategic and business planning, preparing funding applications or supporting academic research. Data is presented around the key themes of education and skills, economy and employment, health and care, population, deprivation, housing, environment, transport and travel and crime. All areas of the county are covered, right down to district, ward and parish level, with information easily accessible in a variety of formats. You can also build your own reports by different themes and topics.

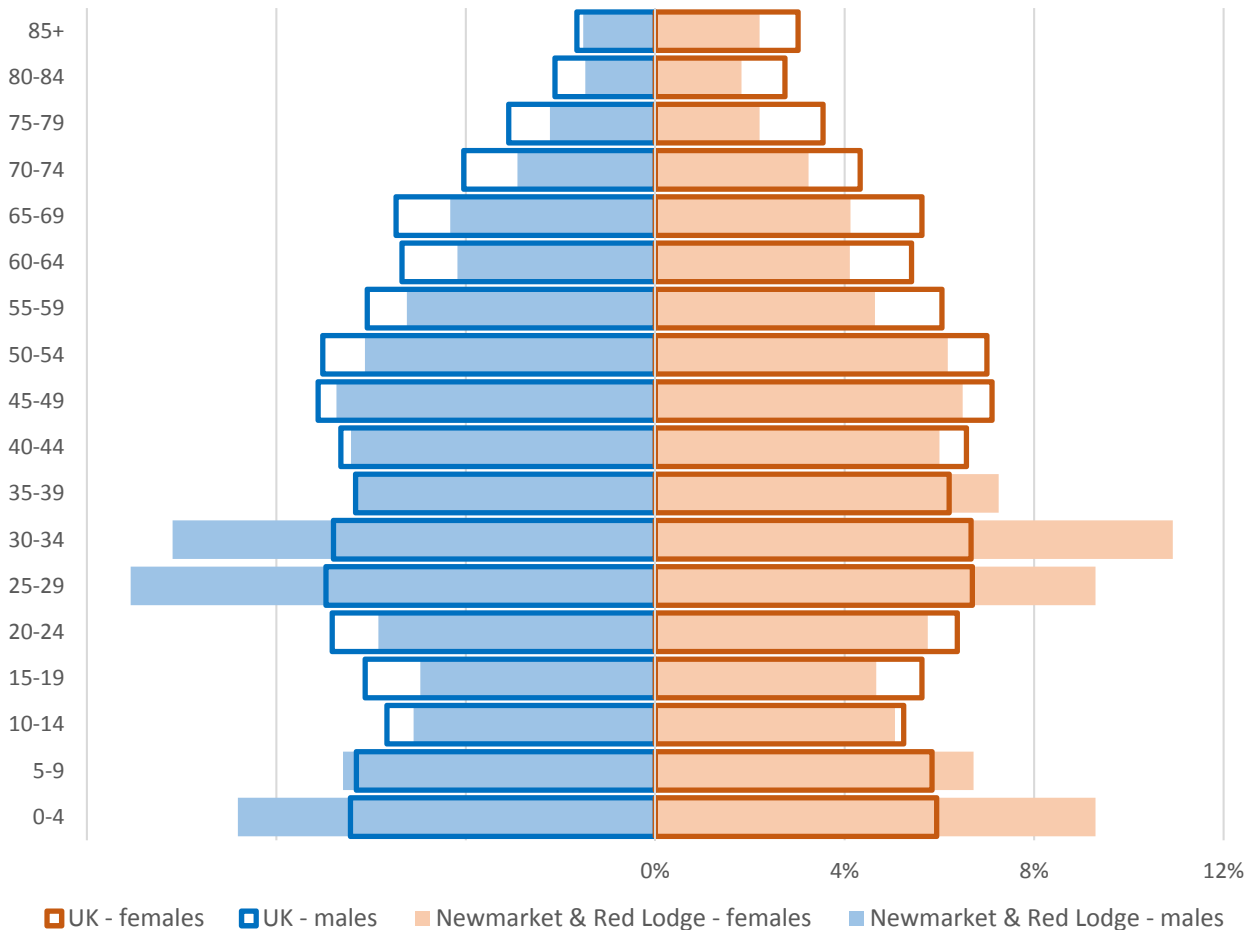
Technical Notes:

1. Where Electoral Divisions do not exactly match ward boundaries, we have adopted a "best fit" approach to produce a dataset.
2. District, county and national level data is provided where possible to provide a context for comparisons.

DEMOGRAPHIC PROFILE - AGE

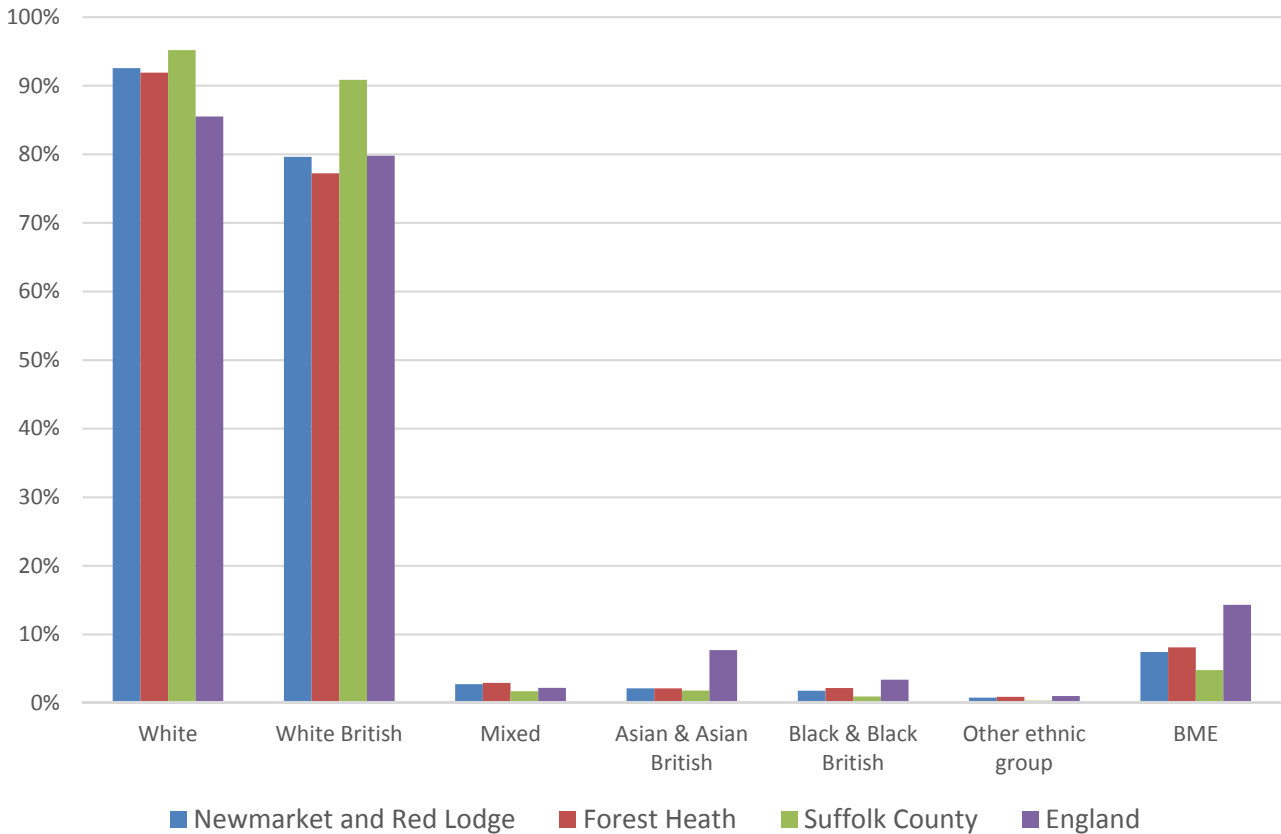
In mid-2015, the population of Newmarket and Red Lodge stood at 14,465, an increase of 10.9% since the 2011 Census. The age structure of the component wards and the division as a whole is set out below.

	Newmarket and Red Lodge Division	Red Lodge	Severals	South
All Ages	14,465	5,426	7,195	1,844
0-4	1,310	664	530	116
5-9	963	404	473	86
10-14	735	262	347	126
15-19	696	284	343	69
20-24	839	406	382	51
25-29	1,471	693	689	89
30-34	1,528	716	738	74
35-39	981	391	502	88
40-44	898	306	480	112
45-49	956	308	502	146
50-54	890	249	489	152
55-59	714	220	373	121
60-64	599	161	328	110
65-69	611	137	320	154
70-74	445	90	243	112
75-79	320	51	179	90
80-84	239	46	133	60
85+	270	38	144	88



- The age pyramid for Newmarket and Red Lodge shows a far higher than average proportion of people between the ages of 25 and 34, and under 5
- The most common age group in Newmarket and Red Lodge is 30-34 year olds, closely followed by 25-29 year olds. The number of young children requiring school places looks set to increase in the coming years
- There is a much lower than average number of people of retirement age

ETHNICITY

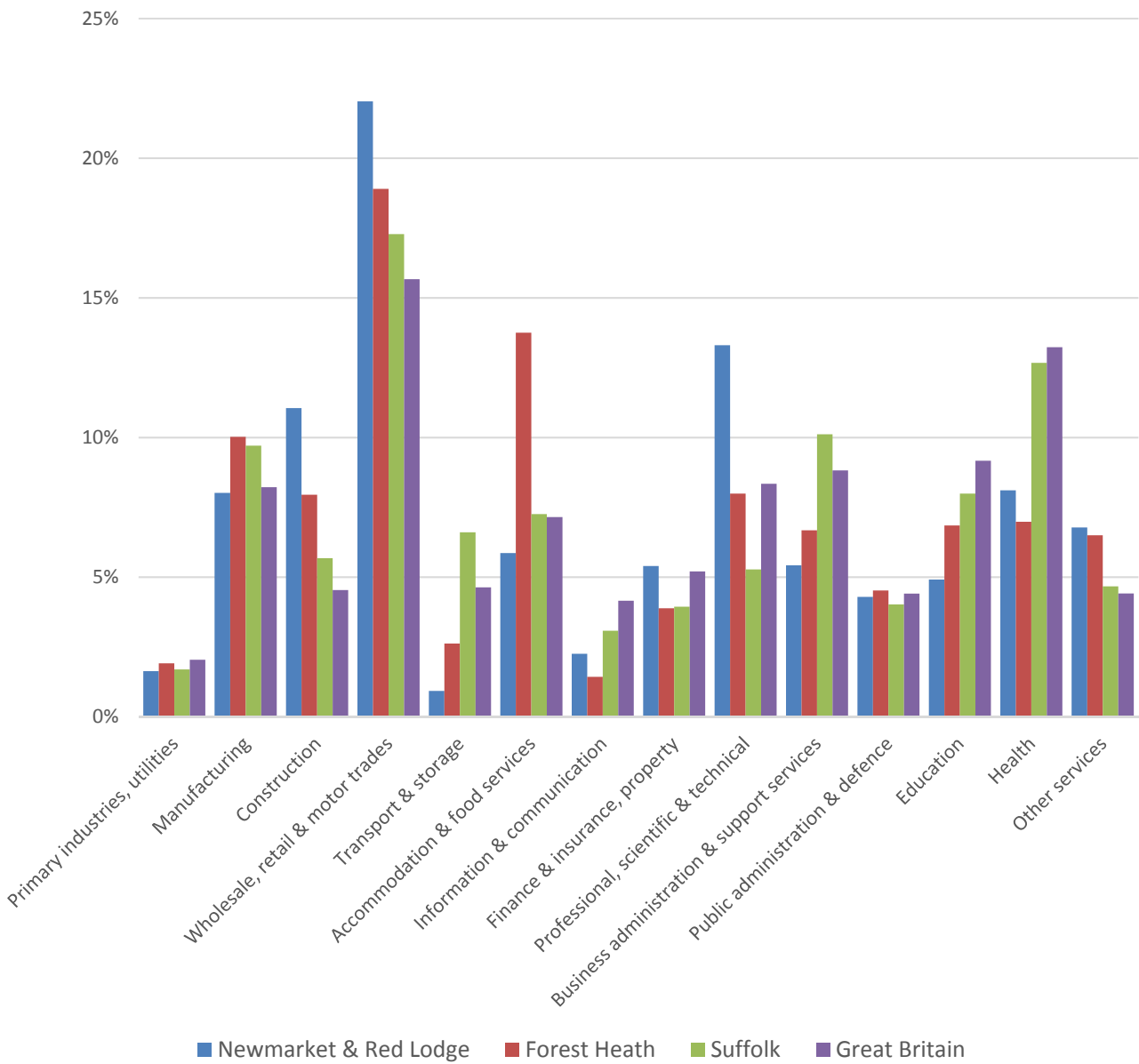


- According to the latest data (2011 Census), 92.6% of the population of Newmarket and Red Lodge are white
- 7.4% of the population in this Division are of black or minority ethnic origin, nearly one and a half times the number at the time of the 2001 Census
- Newmarket and Red Lodge has a similar diversity profile to Forest Heath district generally, and generally higher proportions of minority ethnic groups than Suffolk as a whole

	All people	White		White British		Mixed		Asian and Asian British		Black and Black British		Other Ethnic Group		Black or Minority Ethnic Total	
	Count	Count	%	Count	%	Count	%	Count	%	Count	%	Count	%	Count	%
Newmarket and Red Lodge	12,823	11,869	92.6	10,211	79.6	350	2.7	276	2.2	229	1.8	99	0.8	954	7.4
Forest Heath	59,748	54,907	91.9	46,142	77.2	1,744	2.9	1,263	2.1	1,296	2.2	538	0.9	4,841	8.1
Suffolk	728,163	693,195	95.2	661,458	90.8	12,472	1.7	13,131	1.8	6,854	0.9	2,511	0.3	34,968	4.8
England & Wales			86.0		80.5		2.2		6.7		2.8		0.4		12.1

ECONOMY

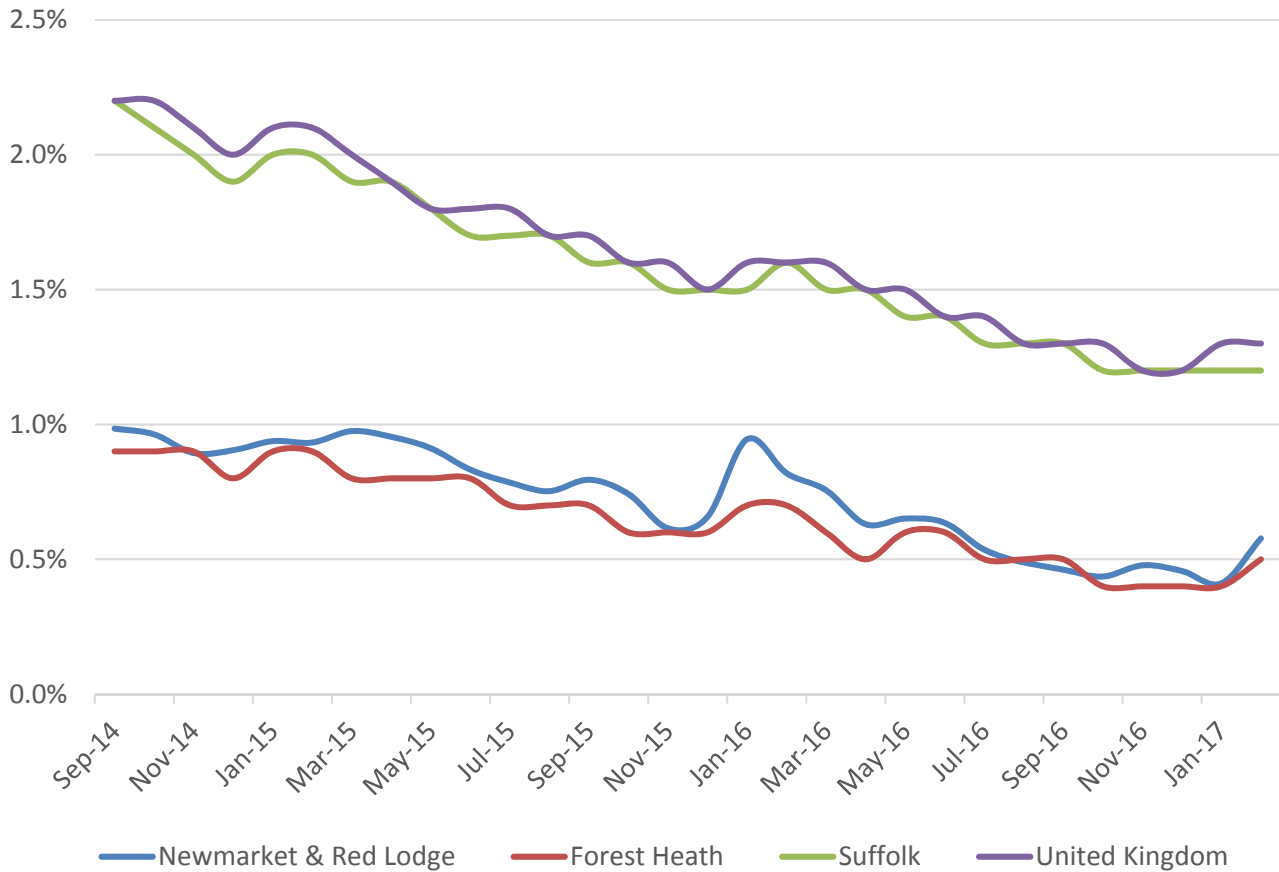
There are 9,000 people employed in Newmarket and Red Lodge.



- There is a good mix of employment in Newmarket and Red Lodge
- The key employment sectors in the division are wholesale, retail & motor trades, professional, scientific & technical activities, construction, health and manufacturing
- These five sectors account for nearly two thirds of jobs in the division

LABOUR MARKET

JOB SEEKERS ALLOWANCE CLAIMANT RATE



- Newmarket and Red Lodge has seen a general decline in the Job Seekers Allowance claimant rate over the past three years in line with the district, county and national trends
- The claimant unemployment rate in the division is consistently similar to the Forest Heath average but below the Suffolk and UK averages
- In percentage terms, around 0.6% of the working age population (aged 16-64) were claiming JSA in the division according to the latest data from February 2017

SCHOOLS

SCHOOL INFORMATION

Schools in the Division

Name	Phase	Average cohort size at:		Latest Ofsted	Latest Ofsted Date
		Foundation Stage (age 5)	KS2 (age 11)		
Moulton CEVCP School	Primary	29	27	Good	16/03/2016
St Louis RCP, Newmarket	Primary	45	35	Good	01/03/2016

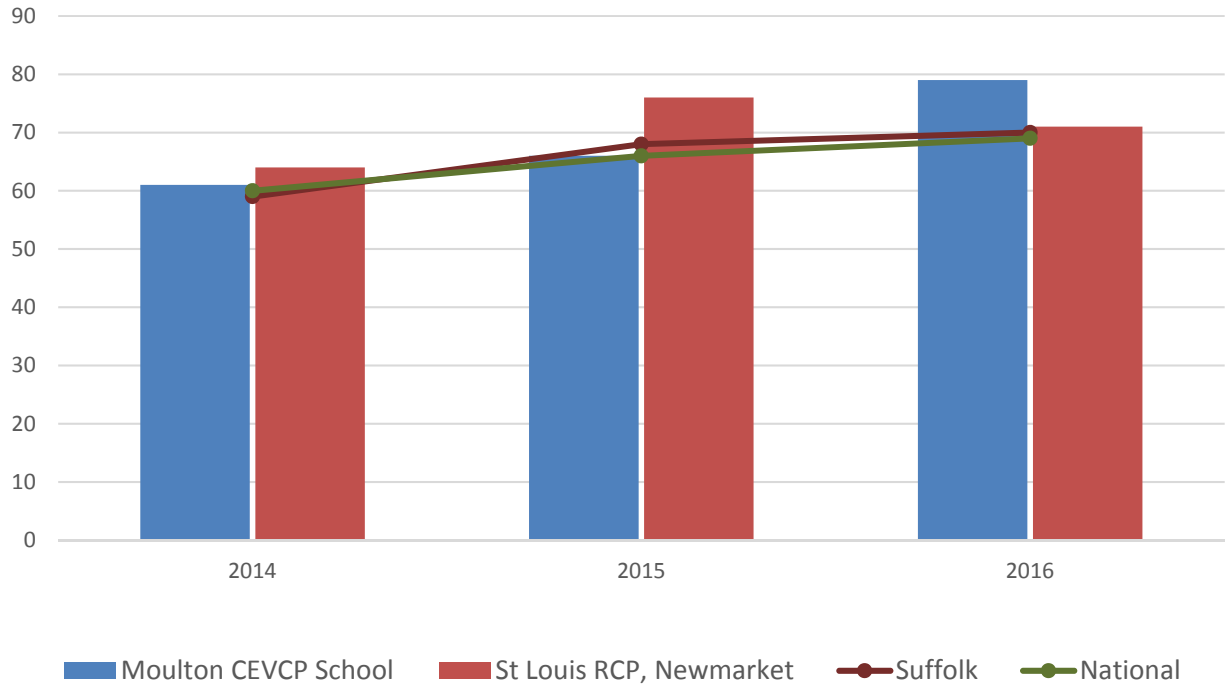
School Catchment overlaps with the Division

Name	Phase	Average cohort size at:				Latest Ofsted	Latest Ofsted Date
		Foundation Stage (age 5)	KS2 (age 11)	KS4 (age 16)	KS5 (age 18)		
St Christopher's CEVCP School	PRU					Good	27/06/2013
All Saints CEVAP School	Primary	30	24			Good	03/11/2015
Houldsworth Valley Primary Academy	Primary	53	21			Not yet inspected as an Academy	
Laureate Community Academy	Primary	29	24				
Newmarket Academy	Upper			115	17		
Mildenhall College Academy	Upper		13	192	52	Good	10/03/2015

SCHOOL ATTAINMENT

Foundation Stage Profile (reception)

Percentage of Pupils attaining a Good Level of Development (GLD)

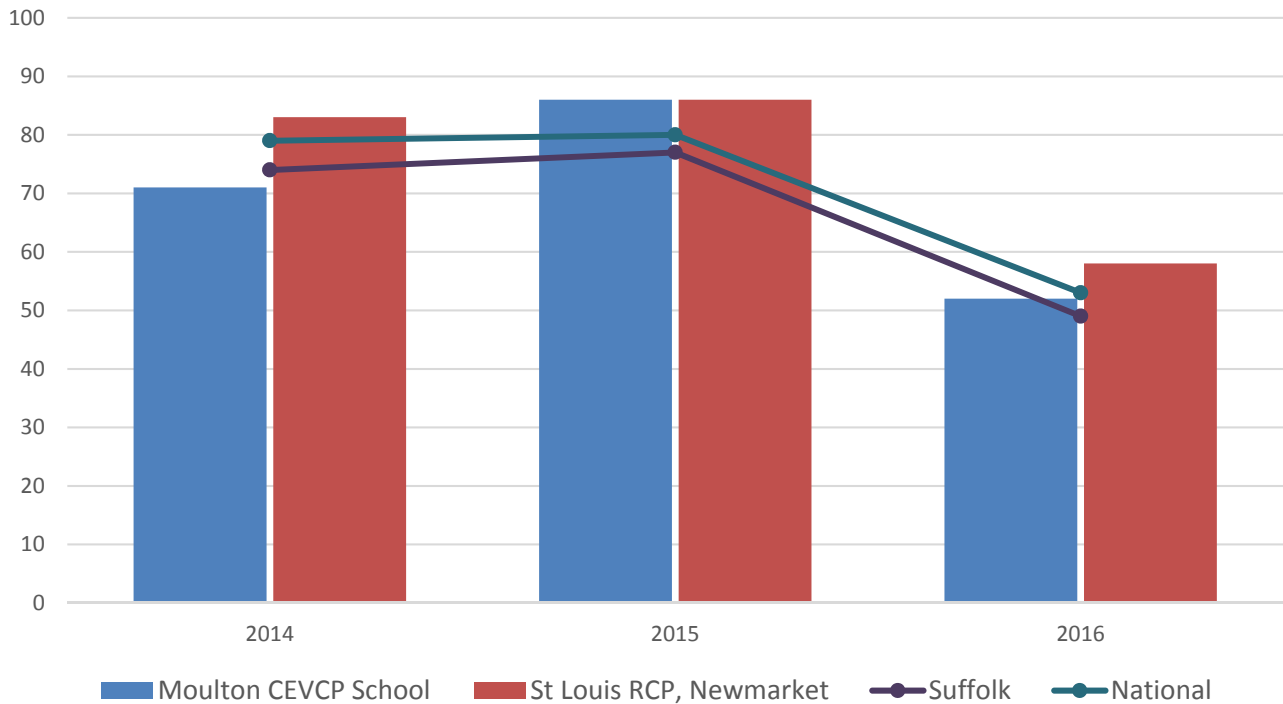


- Attainment at St Louis RCP School exceeded the national and county averages in 2014, and increasingly so in 2015, but then dipped to be in line with those averages in 2016
- Attainment at Moulton CEVCP School has seen a sustained improvement throughout the period and was above the county and national levels in 2016 having been in line with these benchmarks for the previous two years

Key Stage 2 (Age 11)

Pupil Achievement in all three subjects, Reading, Writing and Mathematics (2014 – 2015 as % Level 4 or better) & (2016 % Expected Level or better)

In 2014 and 2015 pupils received National Curriculum Level grades for English and Maths, with L4 being the expected level at the end of Key Stage 2. In 2016 the measure scaled score and shows whether or not a pupil has achieved the national standard for that subject

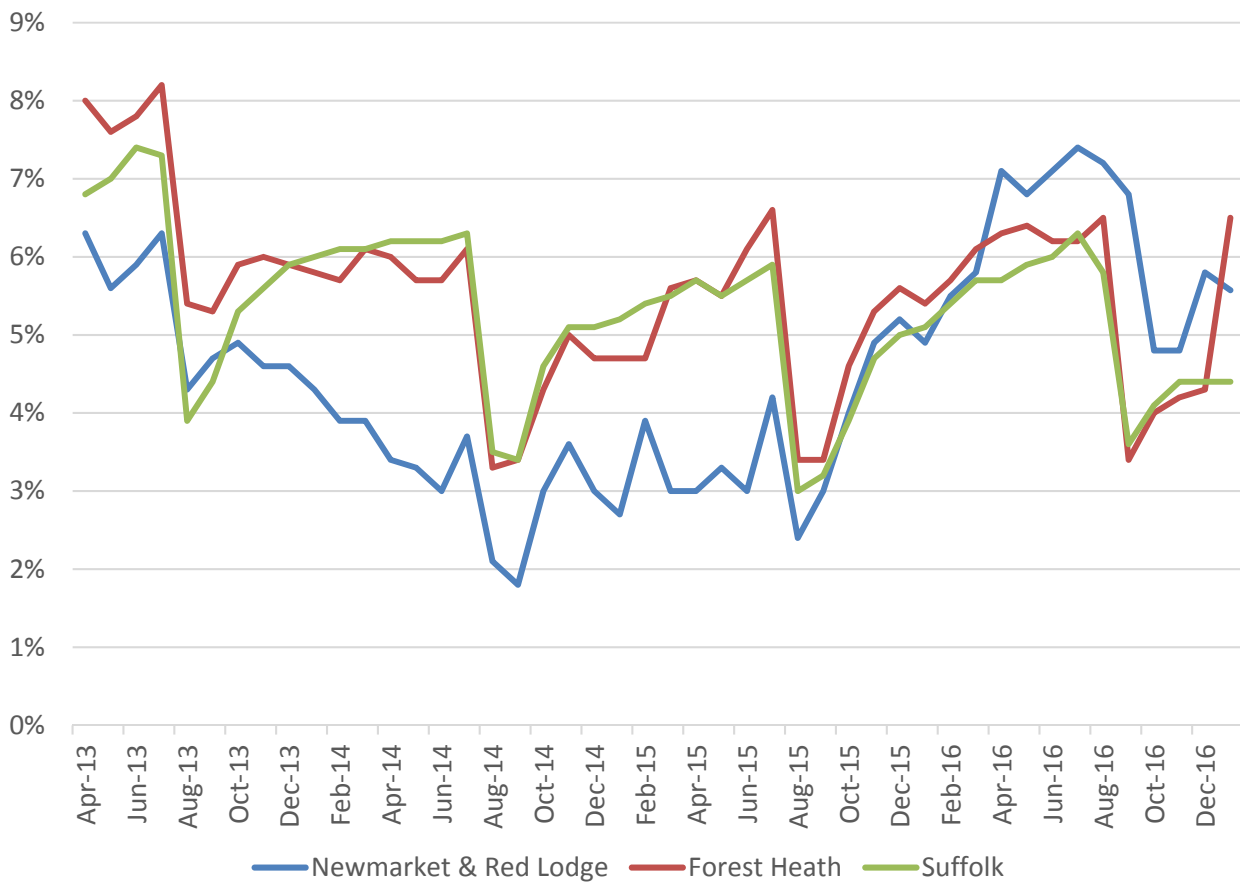


- Key stage 2 attainment at St Louis RCP School has been consistently above the national and county level from 2014 to 2016
- Moulton CEVCP School has seen fluctuating attainment levels through this period.

Key Stage 4 (Age 16) & Key Stage 5 (Age 18)

There are no Upper schools within the Division

NEET % (NOT IN EDUCATION, EMPLOYMENT OR TRAINING)

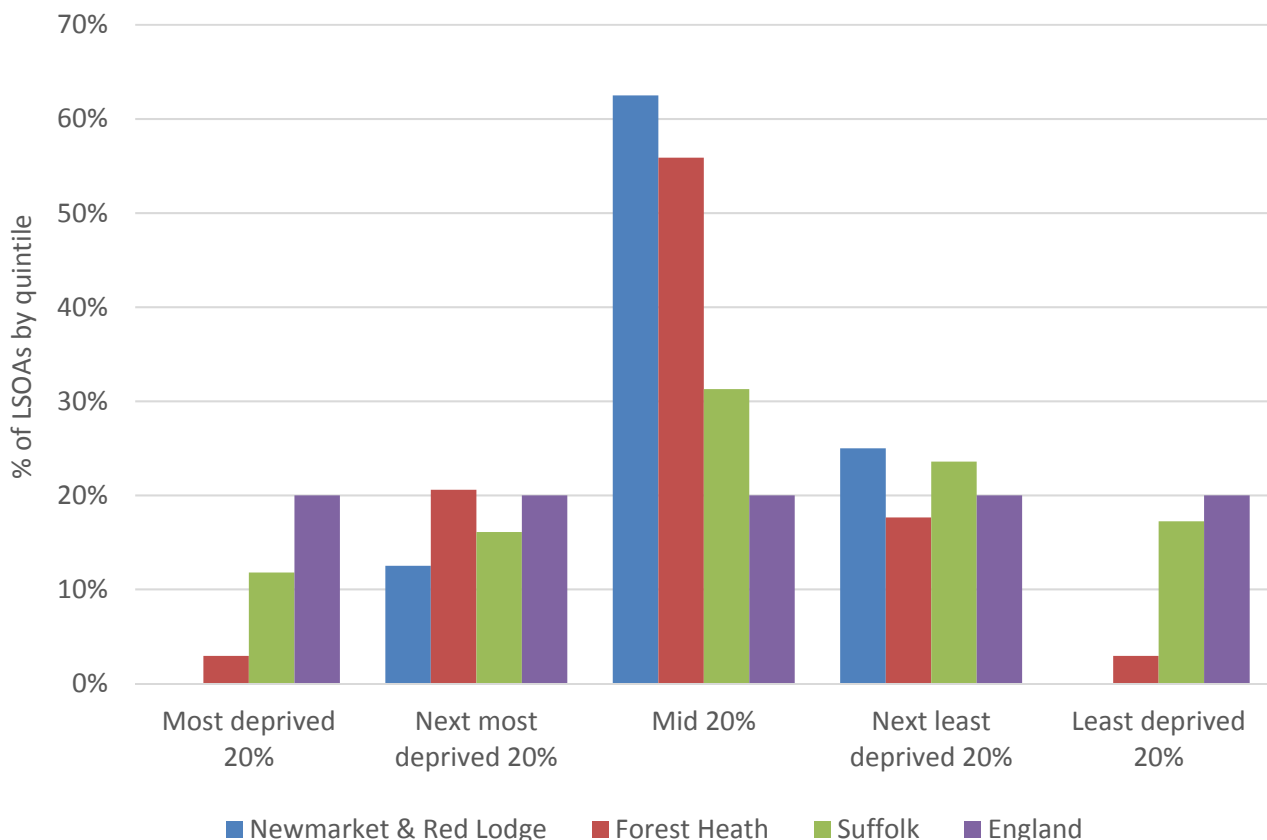


- In January 2017, 5.6% of 16-18 year olds were classified as NEET in Newmarket and Red Lodge (where current activity is known)
- NEET levels in Newmarket and Red Lodge fluctuate considerably. Historically the division has generally seen NEET levels below or in line with the district and county average but from April 2016, local figures have tended to be above the benchmark levels of Forest Heath and Suffolk as a whole

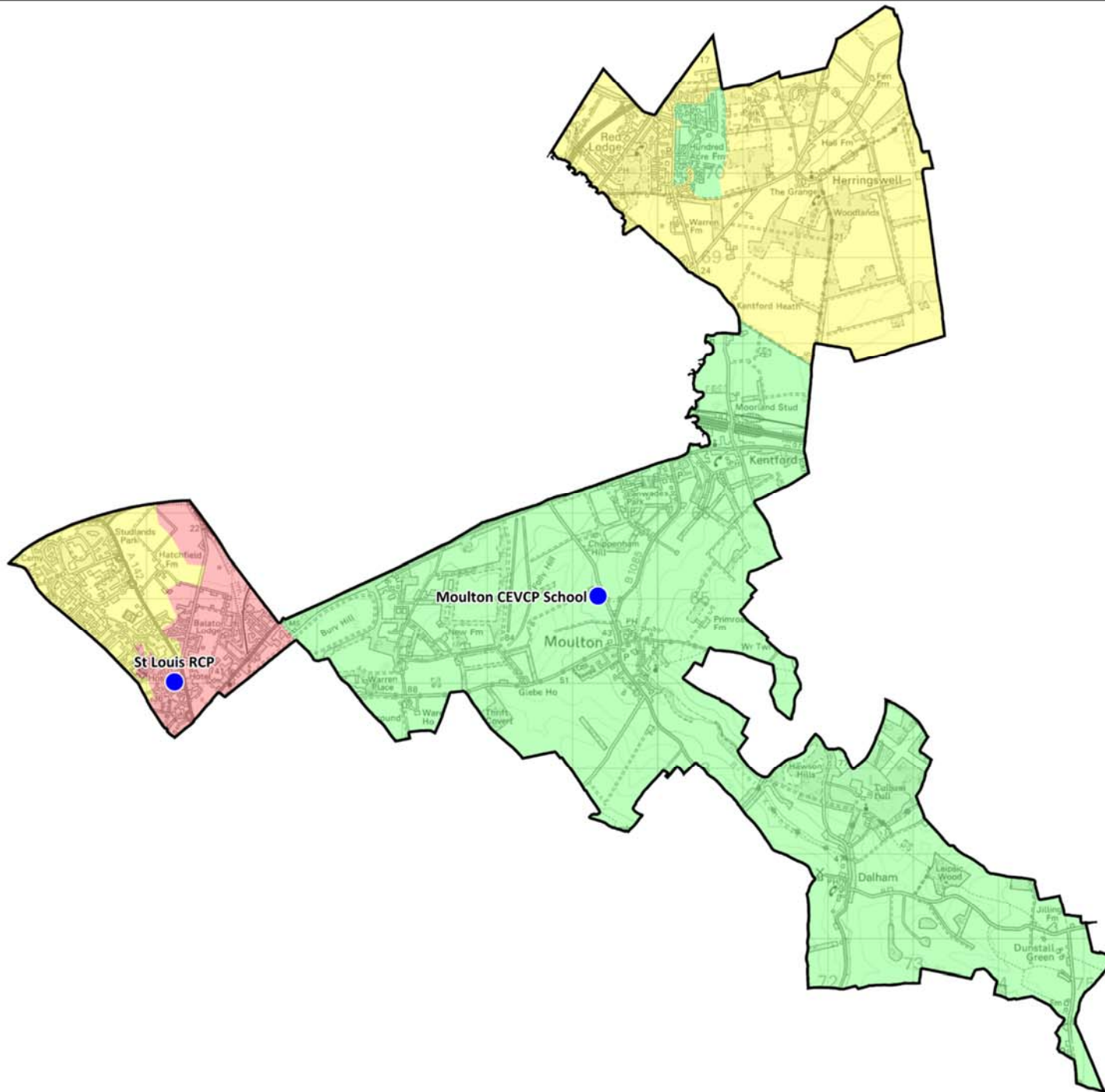
INDEX OF MULTIPLE DEPRIVATION (IMD) 2015 (SEE MAP OVERLEAF)

The IMD combines a number of indicators, chosen to cover a range of economic, social and housing issues, into a single deprivation score for each small area in England. This allows each area to be ranked relative to one another according to their level of deprivation. Small areas (Lower Super Output Areas, average population 1,500) are most usually described as being in 1 of 5 quintile bands. The bottom quintile represents the 20% of areas that are the most deprived in the country; these are shaded red on the map. The top quintile represents the least deprived areas in the country, and is shaded green.

The Index is widely used to analyse patterns of deprivation, identify areas that would benefit from special initiatives or programmes and as a tool to determine eligibility for specific funding streams.



- The IMD 2015 shows that deprivation levels are quite consistent across the Newmarket and Red Lodge division, with most parts of the division among the mid 20% nationally
- Of the eight Lower Layer Super Output Areas (LSOA) comprising the division, five are ranked in the mid 20% of LSOAs in the country, one is in the next most deprived quintile (20%) and two in the next least deprived quintile.



IMD 2015 quintile

- Least deprived 20%
- Next least deprived 20%
- Mid 20%
- Next most deprived 20%
- Most deprived 20%

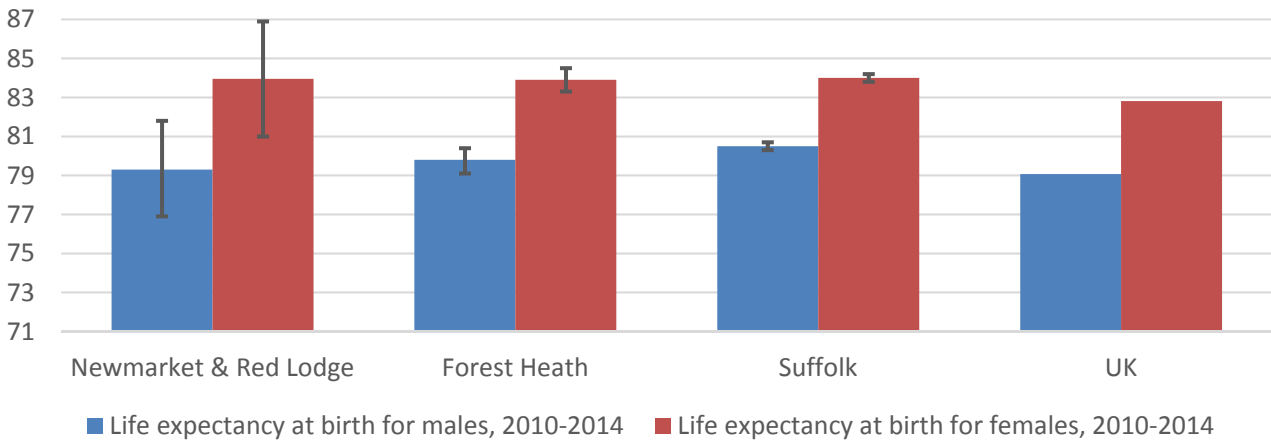
School Type

- Primary
- Middle
- Upper
- Special
- PRU
- Nursery

HEALTH

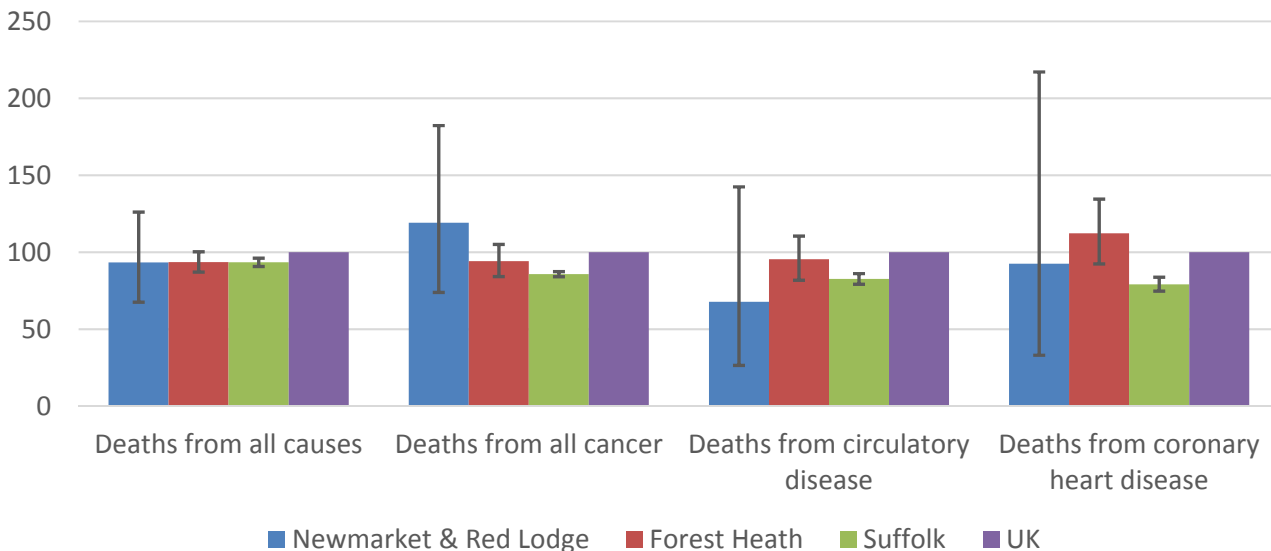
The local data used here is based on relatively small numbers. The confidence limits provide an indication of the reliability of the data. The 95% confidence intervals utilised on the chart provide a range within which there is 95% chance of the true result lying.

LIFE EXPECTANCY AT BIRTH



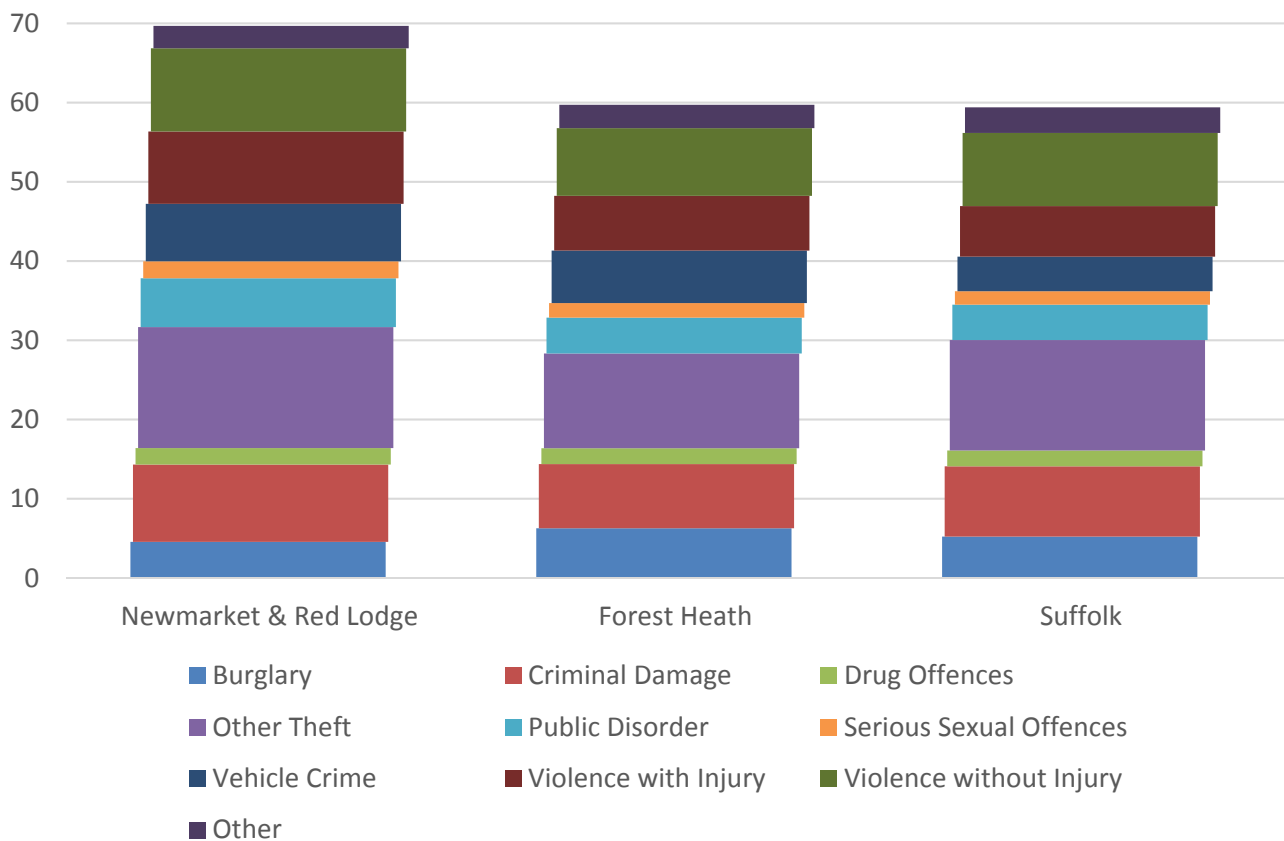
- Estimates for life expectancy in Newmarket and Red Lodge are similar to the district and county figures for both males and females, and slightly higher than the UK average

DEATHS, UNDER 75 YEARS, STANDARDISED MORTALITY RATIO



- The estimated early death rate for all causes in Newmarket and Red Lodge is marginally below that for UK whilst being in line with district and county levels
- The standardised mortality ratio data shown here means that for every 100 early deaths from all causes across the UK as a whole, there are an estimated 93 comparable deaths in Newmarket and Red Lodge
- The estimated rate of deaths due to cancer in Newmarket and Red Lodge is higher than Forest Heath and Suffolk averages
- The confidence intervals around these data at the local level are significant

CRIME & COMMUNITY SAFETY



- Newmarket and Red Lodge has a higher rate of crime than the district and county average according to 2015 data
- There are almost 70 crimes recorded in the division for every 1,000 residents, compared to 60 in Forest Heath and 59 in Suffolk as a whole
- The crime profile in Newmarket and Red Lodge is similar to the district and county profiles
- “Other theft” is the most common type of criminal activity recorded in the division, with more than 15 incidents per 1,000 residents

ADDITIONAL INFORMATION

Parishes in Division

Dalham
 Herringswell
 Kentford
 Moulton
 Newmarket
 Red Lodge

DATA SOURCES

Category	Indicator	Source
Demographic Profile	Quinary population table 2015	ONS 2015 mid-year population estimates
	Population pyramid 2015	ONS 2015 mid-year population estimates
	Ethnicity 2011	ONS 2011 Census
Economy	Employment by broad industrial sector 2015	ONS Business Register and Employment Survey via NOMIS
Labour market	Job Seekers Allowance Claimant Rate (% 16-64 population) 2014-2017	DWP via NOMIS
Education	School information and attainment 2014-2016	Suffolk County Council
	% 16-18 year olds NEET (Not in Employment, Education or Training) 2013-2017	Suffolk County Council
Deprivation	Index of Multiple Deprivation 2015	Department for Communities and Local Government
Health	Life expectancy at birth 2010-2014	Public Health England
Health	Standardised mortality ratio for deaths from all causes, cancer, circulatory disease and coronary heart disease, aged under 75 2010-2014. The standardised mortality ratio is the ratio of observed deaths in the study group to expected deaths in the general population.	Public Health England
Community Safety	Recorded crime rate per 1,000 resident population 2015	Suffolk Police

For more data and information about Newmarket and Red Lodge Electoral Division, see the Suffolk Observatory www.suffolkobservatory.info

