

# Creating a map

You may find it clearer to display your data visually on a map. This short guide provides a simple overview of map creation on the new Suffolk Observatory site.

- Home
- Data
- Children and Young People
- Crime & Community Safety
- Deprivation
- Economy & Employment
- Environment
- Health and Social Care
- Housing
- Population

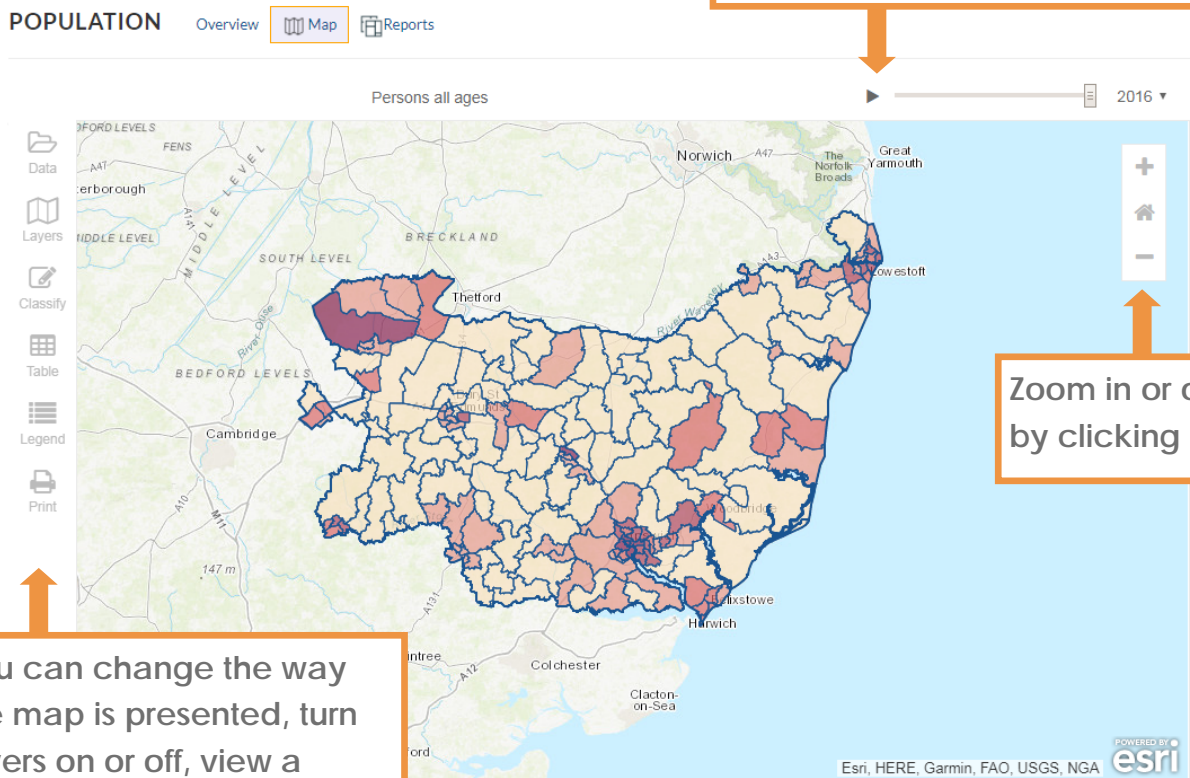
Choose a profile theme from the list, for example population.

At the top of the page there is a 'Map' icon, click this to enter map view.



A default map view is shown below.

You can view data over different years by clicking here.

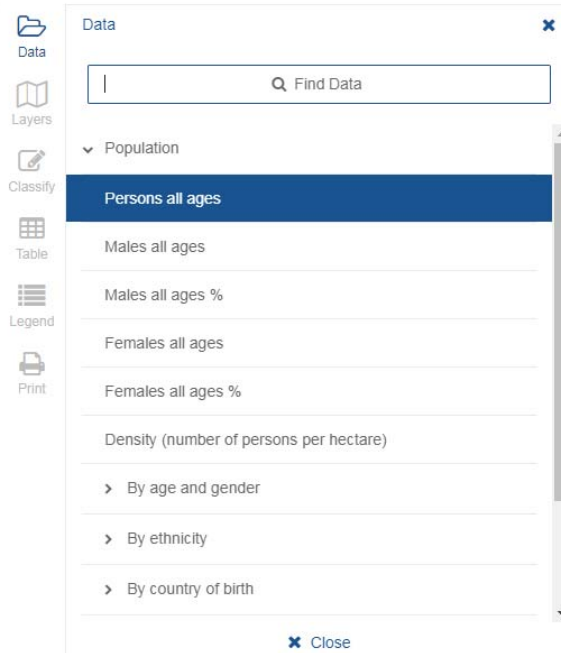


Zoom in or out by clicking here.

You can change the way the map is presented, turn layers on or off, view a legend and print the map here.

# Creating a map

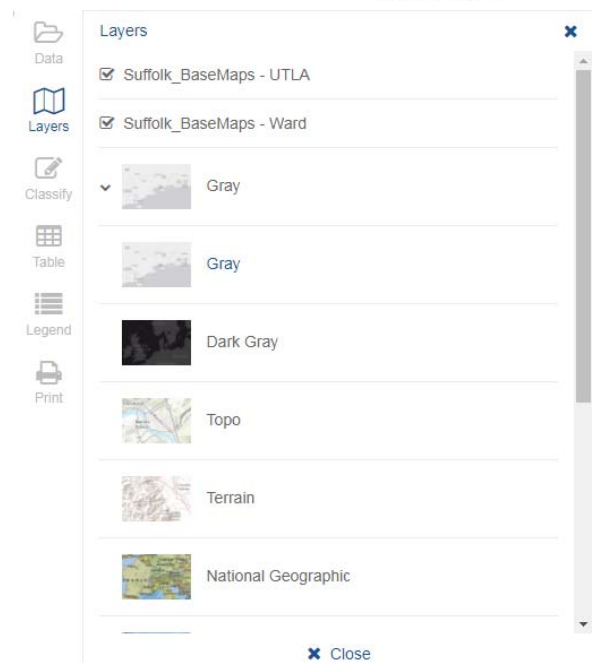
## The different tabs



You can change the data displayed on the map to other theme specific data, by clicking on the **Data** tab.

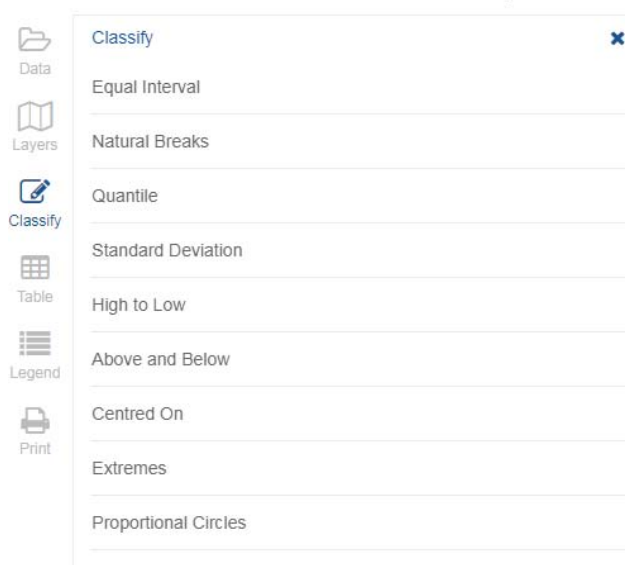
Click on the drop down arrows (to the left of the text) to view available data.

You can also search for data in the find data box.



The **Layers** tab lets you change the way the underlying map looks. For example, you may want a full colour map, or a monochrome map.

Additionally, you can turn the borders of an area (e.g. a ward) on and off.

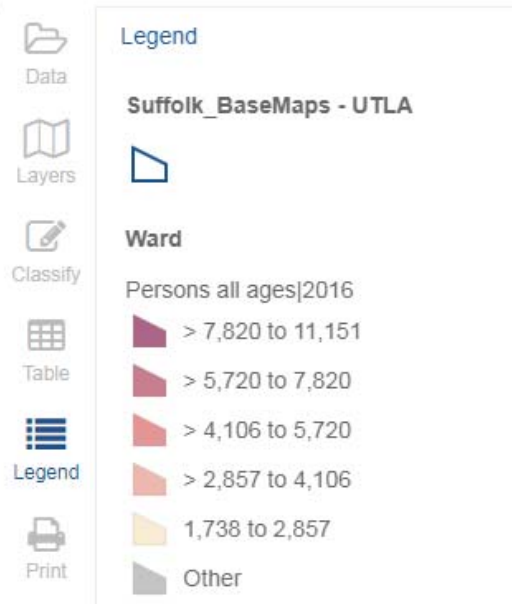


The **Classify** tab allows you change the way the data is grouped. For example, variation by area may not be very clear in the default map view.

By choosing a different classification—you get different data ranges. These can be viewed in the **Legend** tab.

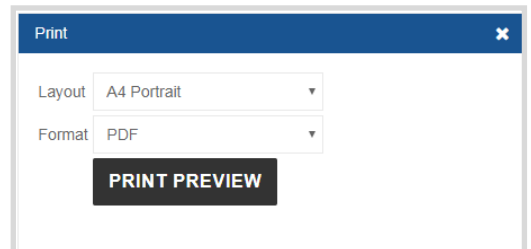
# Creating a map

## The different tabs



The **Legend tab** shows you how the data is displayed, it shows the data range for each colour, as well as what base map has been used. The values of the ranges will change depending on what groupings are chosen in the **Classify** tab.

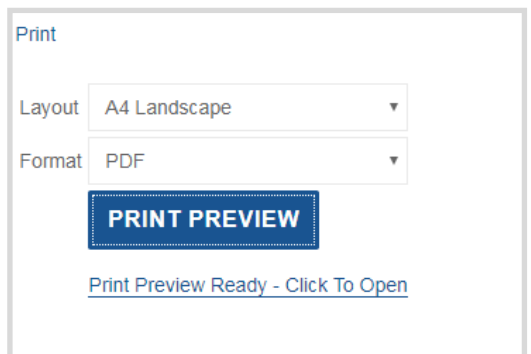
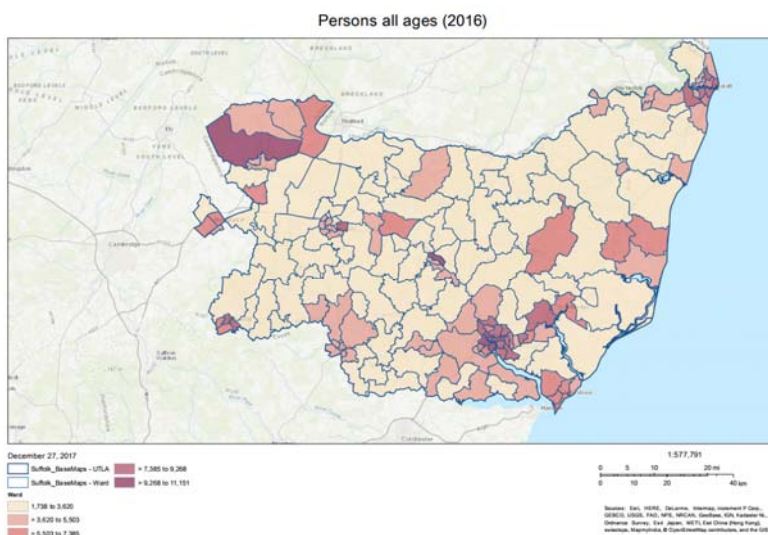
It also shows what data is being displayed and for what year.



The **Print tab** enables you to print the map. You can choose the orientation and the output format.

When the printout is ready to view, a 'print preview ready' link will appear. Click on this to view your map. You can save or print it from the link.

**TIP: you may need to zoom in or out on the normal map screen to get the optimal print view! Picking an A3 landscape layout tends to give the best results!**

**Tip: you can also map data in the data explorer. Add it to your collection, or click on the indicator and select view in map!**