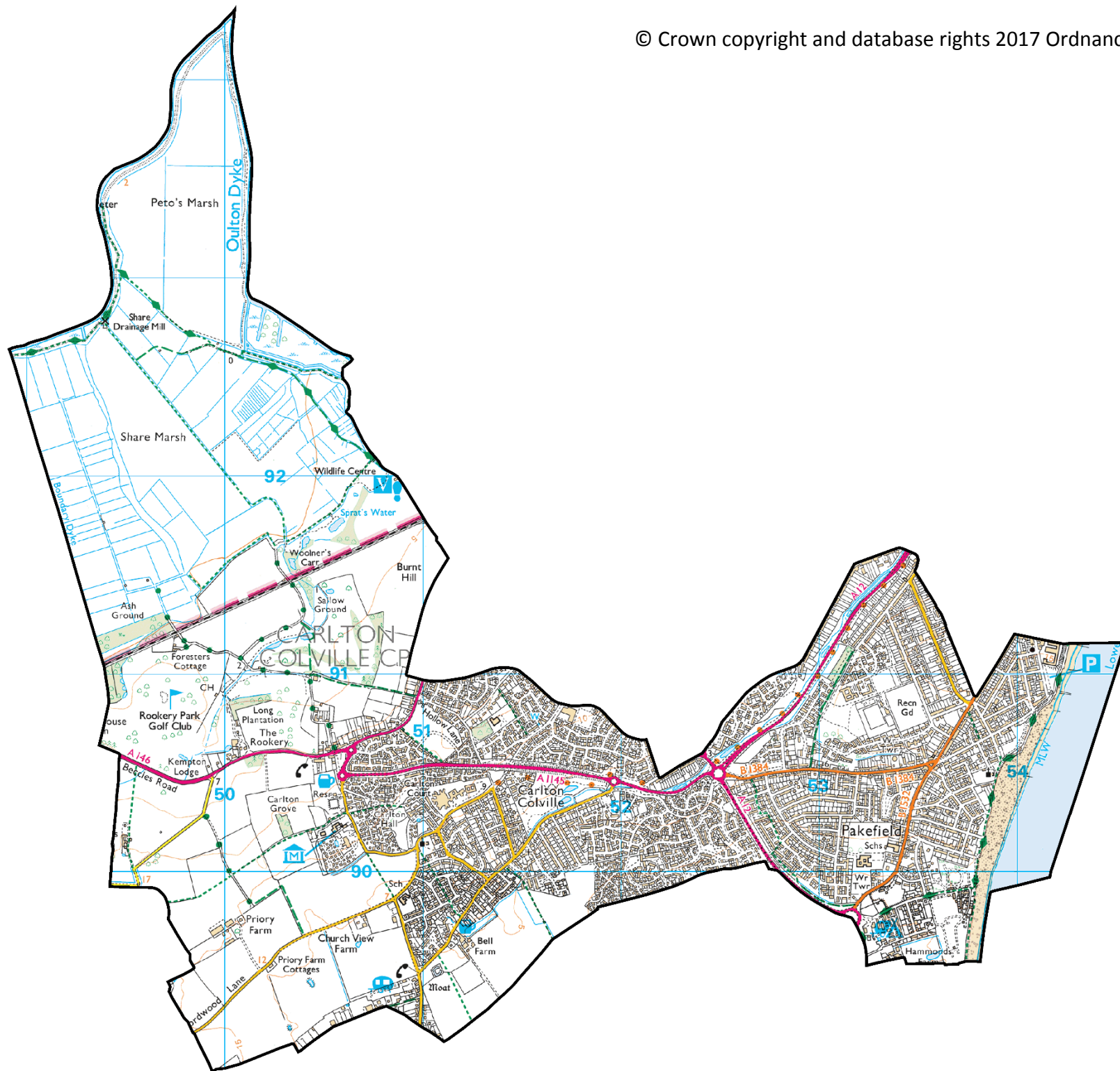


PAKEFIELD

ELECTORAL DIVISION PROFILE 2017

This Division comprises Carlton Colville and Pakefield wards

www.suffolkobservatory.info



CONTENTS

- Demographic Profile: Age & Ethnicity
- Economy and Labour Market
- Schools & NEET
- Index of Multiple Deprivation
- Health
- Crime & Community Safety
- Additional Information
- Data Sources

ELECTORAL DIVISION PROFILES: AN INTRODUCTION

These profiles have been produced to support elected members, constituents and other interested parties in understanding the demographic, economic, social and educational profile of their neighbourhoods. We have used the latest data available at the time of publication.

Much more data is available from national and local sources than is captured here, but it is hoped that the profile will be a useful starting point for discussion, where local knowledge and experience can be used to flesh out and illuminate the information presented here.

The profile can be used to help look at some fundamental questions e.g.

- Does the age profile of the population match or differ from the national profile?
- Is there evidence of the ageing profile of the county in all the wards in the Division or just some?
- How diverse is the community in terms of ethnicity?
- What is the impact of deprivation on families and residents?
- Does there seem to be a link between deprivation and school performance?
- What is the breakdown of employment sectors in the area?
- Is it a relatively healthy area compared to the rest of the district or county?
- What sort of crime is prevalent in the community?

A vast amount of additional data is available on the **Suffolk Observatory**

www.suffolkobservatory.info

The Suffolk Observatory is a free online resource that contains all Suffolk's vital statistics; it is the one-stop-shop for information and intelligence about Suffolk. Through data, reports and profiles, the Suffolk Observatory provides a comprehensive picture of the County. It is a great source for useful facts and figures that can be used for writing reports and presentations, informing strategic and business planning, preparing funding applications or supporting academic research. Data is presented around the key themes of education and skills, economy and employment, health and care, population, deprivation, housing, environment, transport and travel and crime. All areas of the county are covered, right down to district, ward and parish level, with information easily accessible in a variety of formats. You can also build your own reports by different themes and topics.

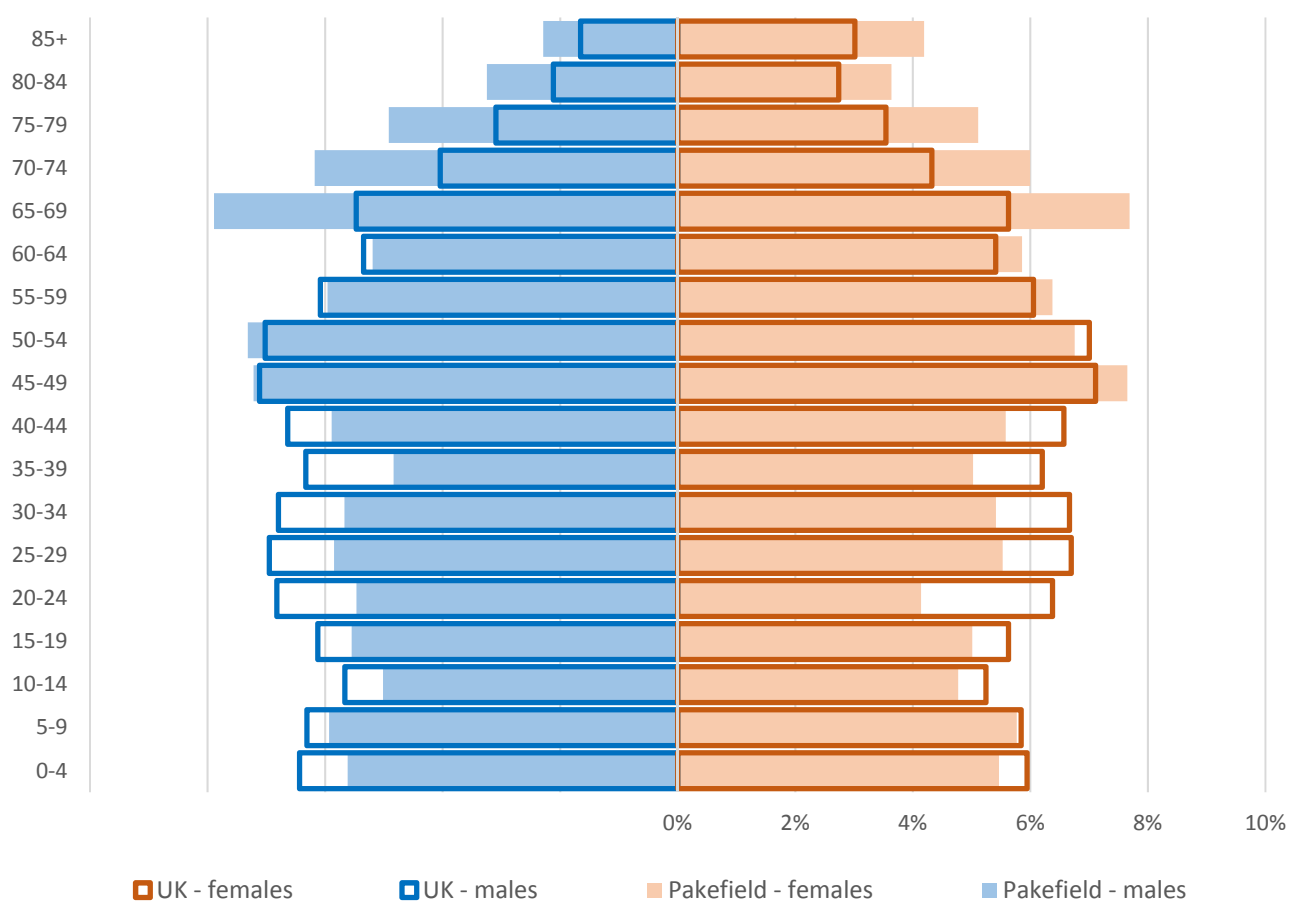
Technical Notes:

1. Where Electoral Divisions do not exactly match ward boundaries, we have adopted a "best fit" approach to produce a dataset.
2. District, county and national level data is provided where possible to provide a context for comparisons.

DEMOGRAPHIC PROFILE - AGE

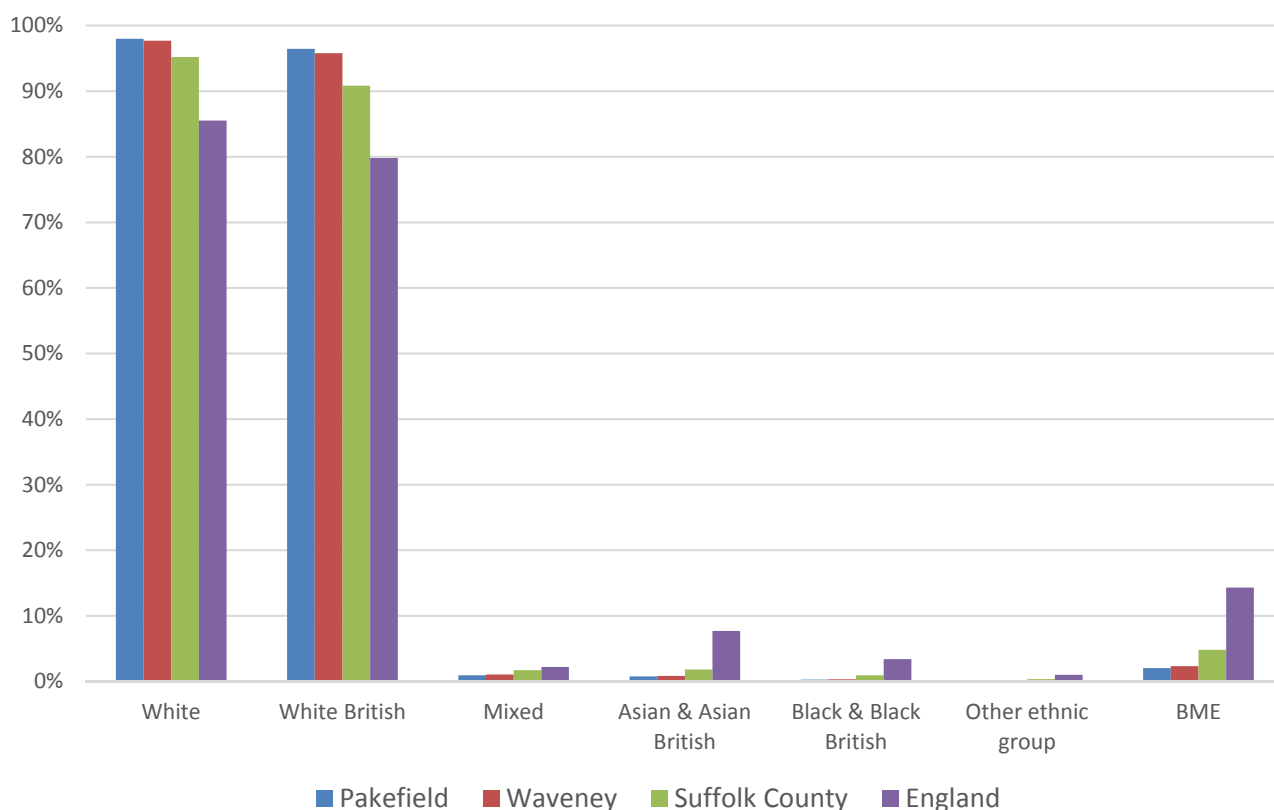
In mid-2015, the population of Pakefield stood at 15,221, an increase of 1% since the 2011 Census. The age structure of the component wards and the division as a whole is set out below.

	Pakefield Division	Carlton Colville	Pakefield
All Ages	15,221	8,838	6,383
0-4	843	588	255
5-9	890	618	272
10-14	744	480	264
15-19	802	527	275
20-24	727	451	276
25-29	865	558	307
30-34	843	577	266
35-39	751	512	239
40-44	872	563	309
45-49	1,133	703	430
50-54	1,069	642	427
55-59	940	525	415
60-64	843	402	441
65-69	1,185	544	641
70-74	926	403	523
75-79	764	326	438
80-84	525	233	292
85+	499	186	313



- The age pyramid for Pakefield Electoral Division shows a considerably higher proportion of people of retirement age when compared to the national average
- The most common age group in the division is 65-69 year olds, followed by 45-49 year olds
- There is a much lower than average number of people of working age, particularly 20-39 year olds

ETHNICITY

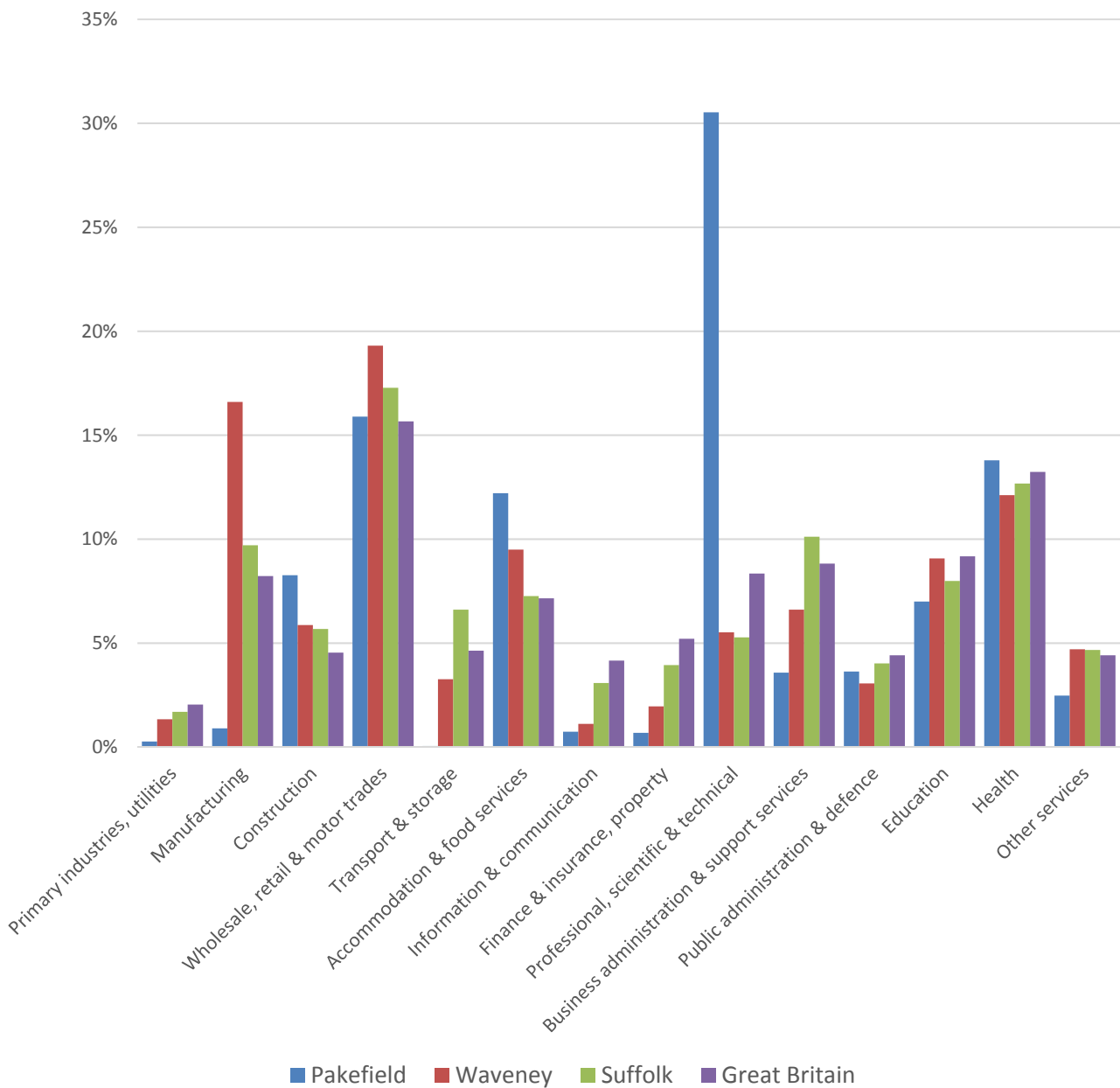


- According to the latest data (2011 Census), 98.0% (14,763) of the population of Pakefield Electoral Division are white
- There are 305 (2.0%) people of black or minority ethnic origin in the division, less than the level in Suffolk as a whole and around a sixth of the England & Wales average
- Pakefield has a similar diversity profile to Waveney district, and generally lower proportions of minority ethnic groups than Suffolk as a whole

	All people	White		White British		Mixed		Asian and Asian British		Black and Black British		Other Ethnic Group		Black or Minority Ethnic Total	
	Count	Count	%	Count	%	Count	%	Count	%	Count	%	Count	%	Count	%
Pakefield	15,068	14,763	98.0	14,533	96.4	140	0.9	117	0.8	40	0.3	8	0.1	305	2.0
Waveney	115,254	112,589	97.7	110,385	95.8	1,215	1.1	959	0.8	369	0.3	122	0.1	2,665	2.3
Suffolk	728,163	693,195	95.2	661,458	90.8	12,472	1.7	13,131	1.8	6,854	0.9	2,511	0.3	34,968	4.8
England & Wales			86.0		80.5		2.2		6.7		2.8		0.4		12.1

ECONOMY

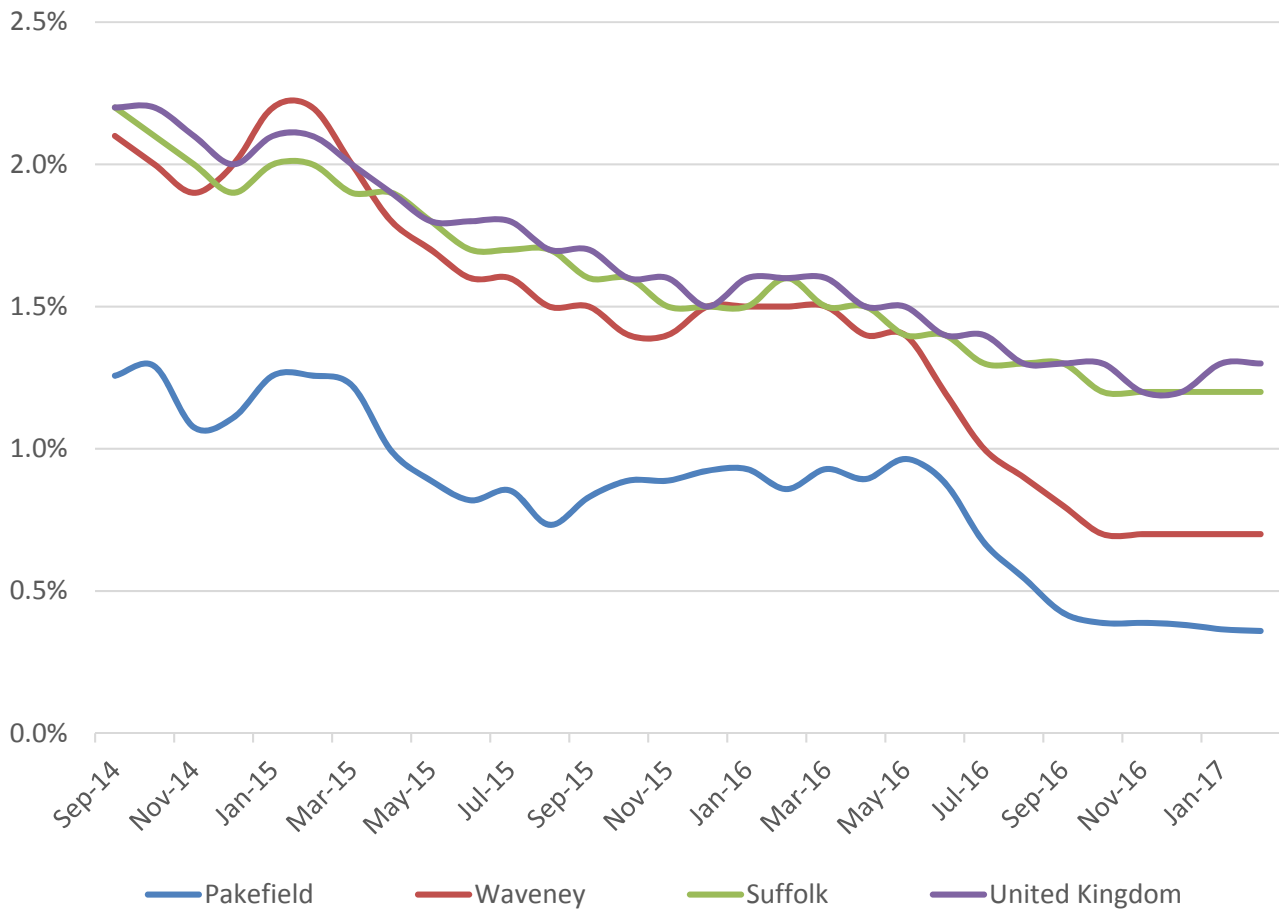
There are around 2,000 people employed in Pakefield.



- The key employment sectors are professional, scientific and technical activities, wholesale, retail and motor trades, health and accommodation and food services. Almost three-quarters of the employees in Pakefield work in these four sectors
- Professional, scientific and technical activities account for over 30% of jobs in the division and includes employment at the CEFAS Laboratory on Pakefield Road

LABOUR MARKET

JOB SEEKERS ALLOWANCE CLAIMANT RATE



- Pakefield has seen a general decline in the Job Seekers Allowance claimant rate over the past three years
- The claimant unemployment rate in Pakefield is consistently below the Waveney, Suffolk and UK averages
- In percentage terms, around 0.4% of the working age population (aged 16-64) were claiming JSA in the division according to the latest data from February 2017

SCHOOLS

SCHOOL INFORMATION

Schools in the Division

		Average cohort size at:				
Name	Phase	Foundation Stage (age 5)	KS2 (age 11)	KS4 (age 16)	Latest Ofsted	Latest Ofsted Date
Grove Primary School	Primary	43	35		Not yet inspected as an Academy	
Pakefield Primary School	Primary	59	60			
Pakefield School	Upper			118	Good	14/03/2013

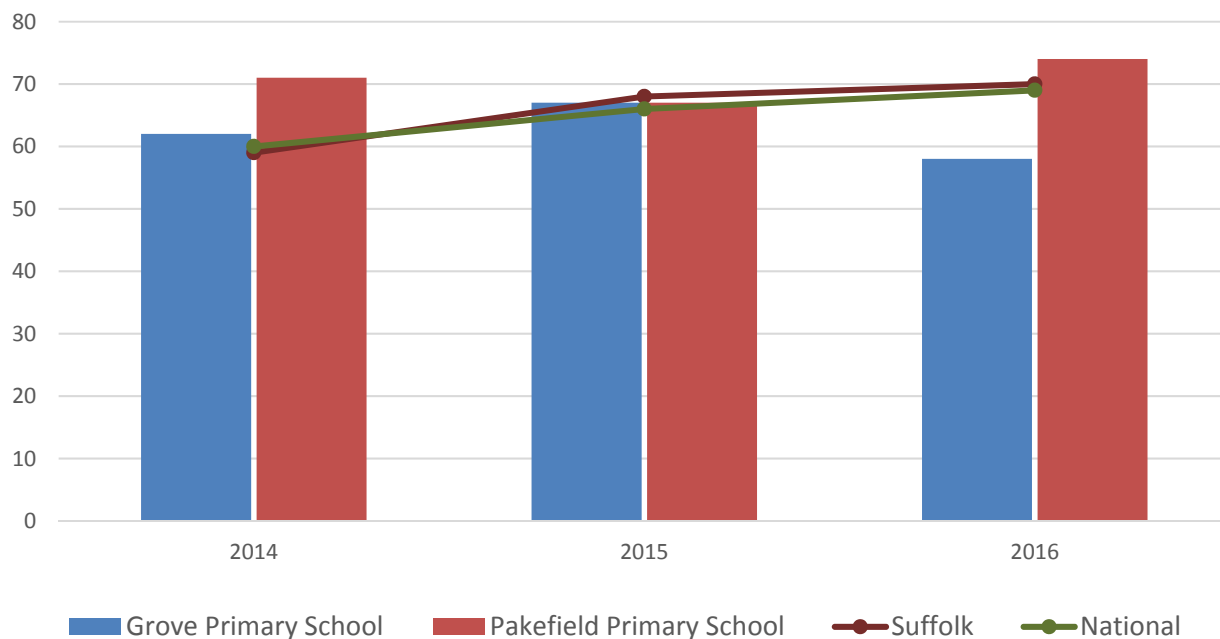
School Catchment overlaps with the Division

Name	Phase	Average cohort size at:			Latest Ofsted	Latest Ofsted Date
		Foundation Stage (age 5)	KS2 (age 11)	KS4 (age 16)		
Carlton Colville Primary School	Primary	60	57		Outstanding	28/11/2011
Phoenix St Peter Academy	Primary	28	41		Not yet inspected as an Academy	
Westwood Primary School	Primary	26	24		Requires Improvement	17/03/2015
East Point Academy	Upper			154	Good	11/10/2016

SCHOOL ATTAINMENT

Foundation Stage Profile (reception)

% pupils achieving Good Level of Development (GLD)

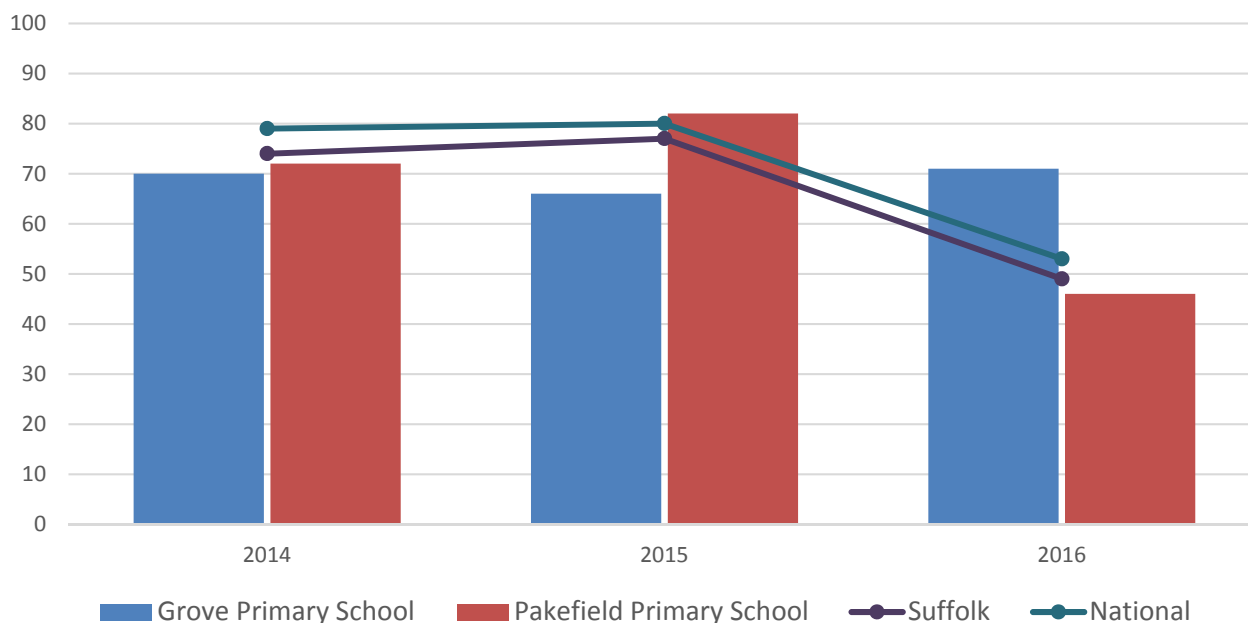


- Foundation Stage attainment at the two schools in the division has remained roughly at or above the county and national average from 2014 to 2016, but declined slightly in the most recent year at Grove Primary School
- In 2016, 74% of pupils at Pakefield Primary School achieved a Good Level of Development, with 58% achieving this level at Grove Primary School. The national average is 69% and Suffolk average is 70%
- Pupils at both schools saw good levels of average attainment in 2014 and 2015, above the national average in both cases

Key Stage 2 (age 11)

Pupil Achievement in all three subjects, Reading, Writing and Mathematics
(2014–2015 as % Level 4 or better & 2016 % Expected Level or better)

In July 2016, there was a change in the way pupil achievement is measured at the end of KS2. Prior to 2016, pupils received National Curriculum Level grades for English and Maths, with L4 being the expected level at the end of Key Stage 2. In 2016 the measure became a scaled score and shows whether or not a pupil has achieved the national standard for that subject.

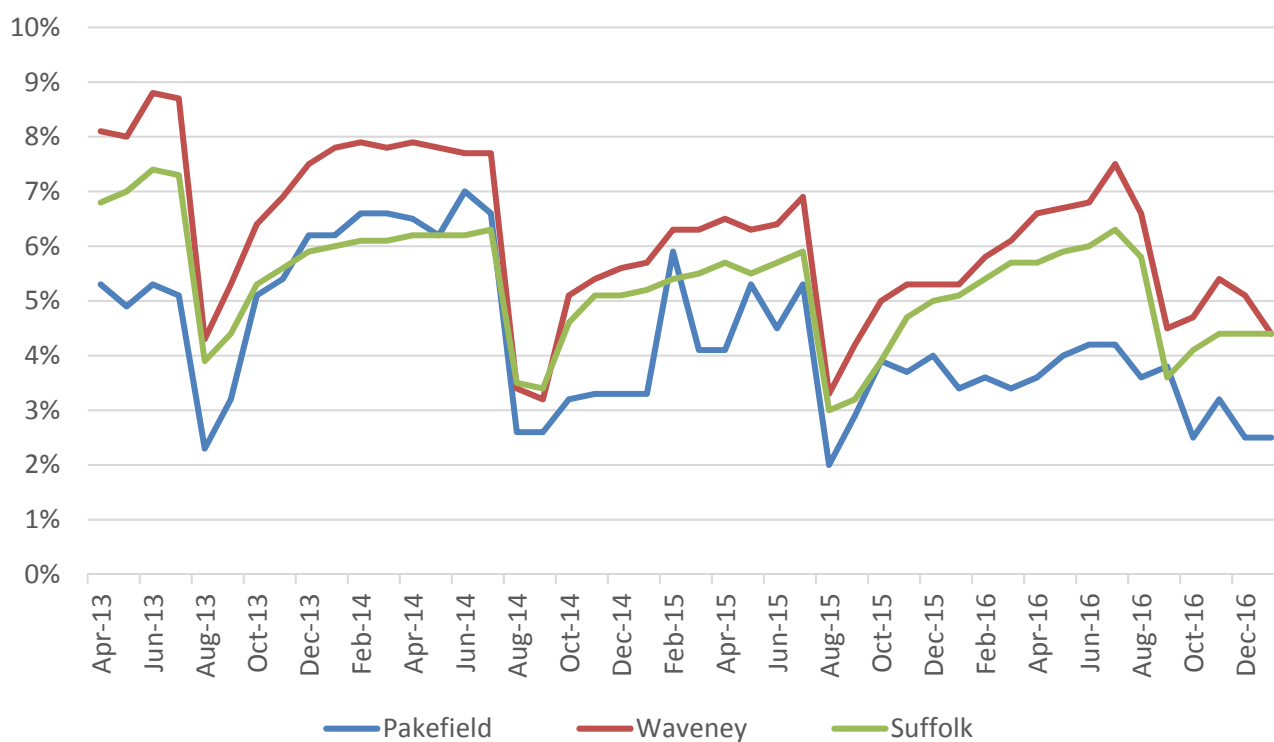


- Key stage 2 attainment at schools in Pakefield has been quite variable from 2014 to 2016
- The most recent data (2016) shows attainment at Grove Primary School is currently above average, with 71% of pupils achieving the expected level or better at the school compared to 53% nationally and 49% in Suffolk
- Pakefield Primary School saw slightly below average attainment with 46% of the cohort in 2016 achieving the expected level or better
- In the two previous years, attainment at the two schools has tended to be below average with the exception of Pakefield Primary in 2015

GCSE (Key Stage 4) (age 16) and A Level (Key Stage 5) (age 18)

There are no Upper schools located in this division

NEET % (NOT IN EDUCATION, EMPLOYMENT OR TRAINING)

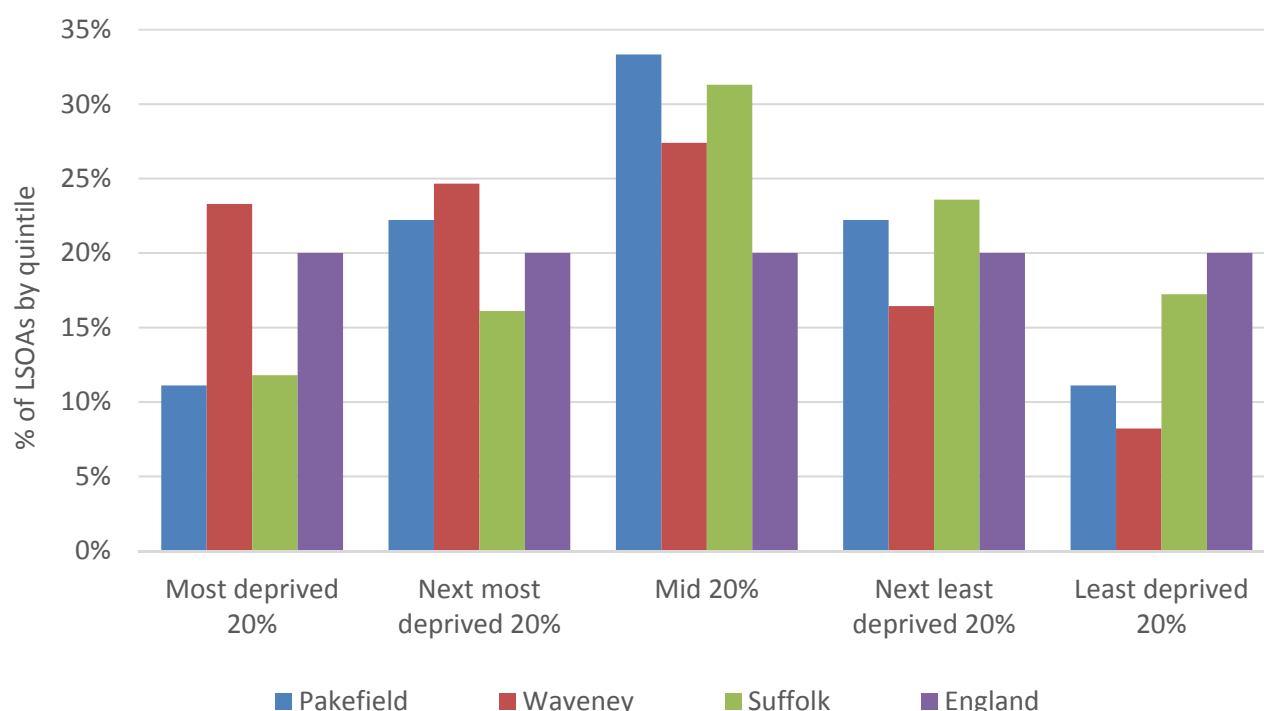


- In January 2017 around 2.5% of 16-18 year olds in Pakefield were classified as NEET (where current activity is known).
- NEET levels in Pakefield are currently below the Waveney and Suffolk average

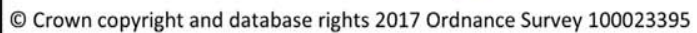
INDEX OF MULTIPLE DEPRIVATION (IMD) 2015 (SEE MAP OVERLEAF)

The IMD combines a number of indicators, chosen to cover a range of economic, social and housing issues, into a single deprivation score for each small area in England. This allows each area to be ranked relative to one another according to their level of deprivation. Small areas (Lower Super Output Areas, average population 1,500) are most usually described as being in 1 of 5 quintile bands. The bottom quintile represents the 20% of areas that are the most deprived in the country; these are shaded red on the map. The top quintile represents the least deprived areas in the country, and is shaded green.

The Index is widely used to analyse patterns of deprivation, identify areas that would benefit from special initiatives or programmes and as a tool to determine eligibility for specific funding streams.



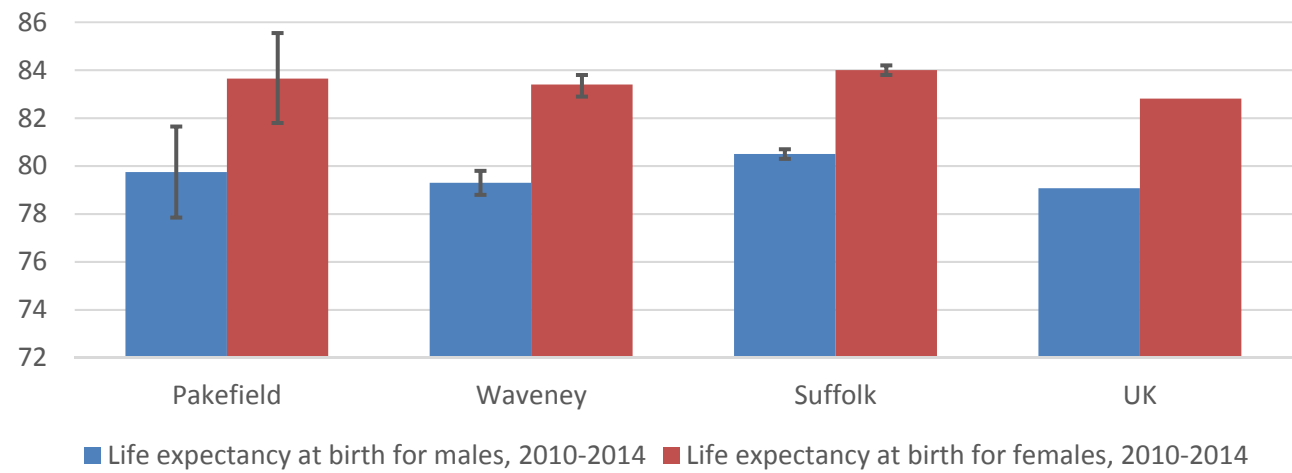
- The IMD 2015 shows that deprivation levels in Pakefield are extremely varied, with parts of the division among the most deprived 20% nationally but also in the best 20%
- Of the nine Lower Layer Super Output Areas (LSOA) comprising the division, one is ranked in the top 20% most deprived LSOAs in the country, two are in the next worst quintile, three are in the mid quintile, two are in the second best quintile and one is in the least deprived quintile
- See the map overleaf for the distribution of IMD 2015 results across the division



HEALTH

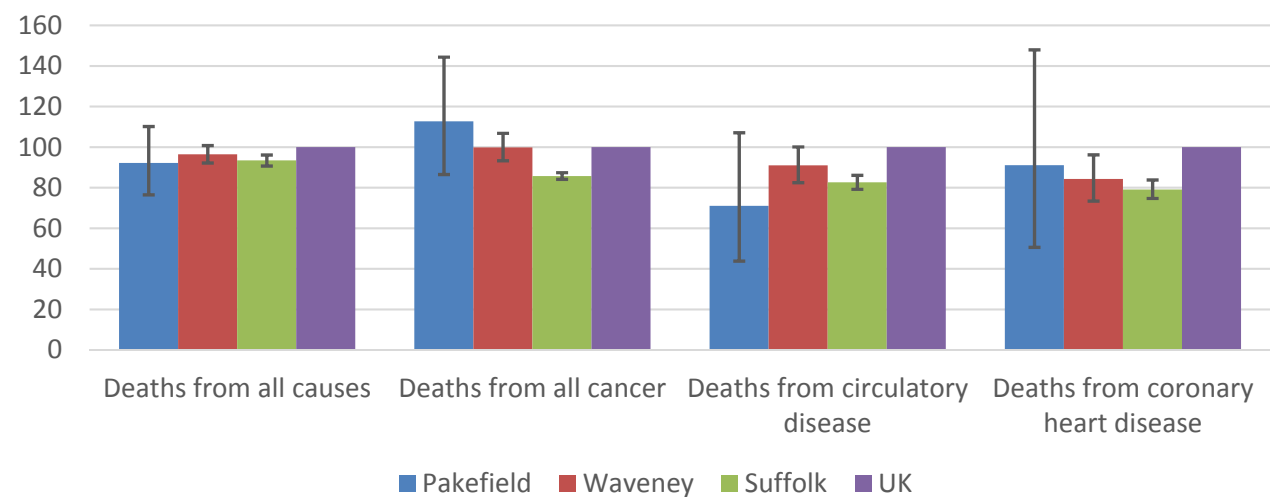
The local data used here is based on relatively small numbers. The confidence limits provide an indication of the reliability of the data. The 95% confidence intervals utilised on the chart provide a range within which there is 95% chance of the true result lying.

LIFE EXPECTANCY AT BIRTH



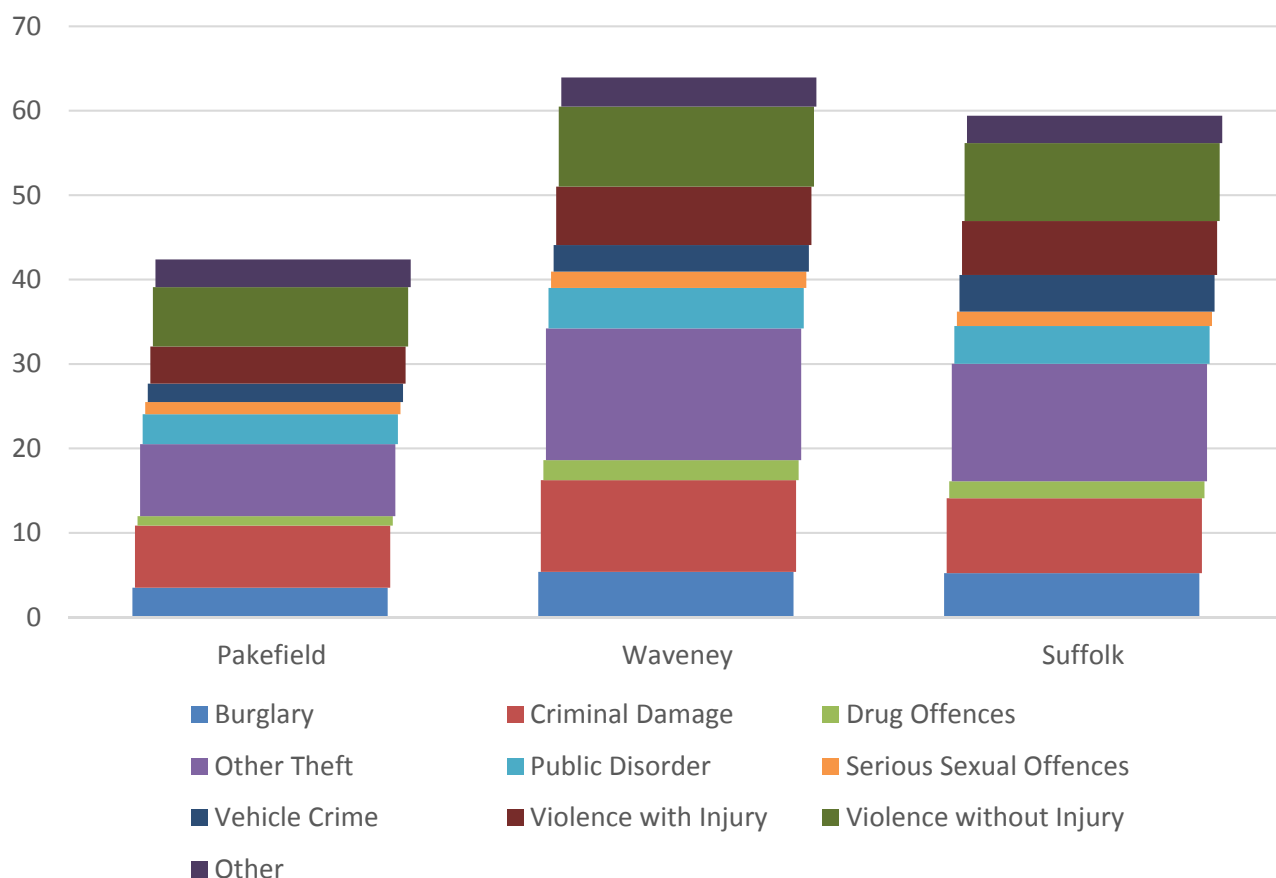
- Estimates for Pakefield suggest that life expectancy for men and women is between the Waveney and Suffolk averages and relatively high when compared to the UK as a whole
- Current life expectancy at birth for females is approaching 84, compared to just below 80 for males

DEATHS, UNDER 75 YEARS, STANDARDISED MORTALITY RATIO



- Standardised mortality ratios for deaths from all causes, circulatory disease and coronary heart disease in Pakefield are below 100, indicating that deaths in under 75s due to these causes are lower than nationally
- The ratio of deaths of under 75s from cancer is higher in Pakefield than the comparator areas
- The standardised mortality ratio data shown here means that for every 100 early deaths from all causes across the UK as a whole, there are an estimated 92 comparable deaths in Pakefield

CRIME & COMMUNITY SAFETY



- Crime levels in Pakefield are fairly low compared to both Waveney and Suffolk, with just over 42 crimes per 1,000 residents in 2015
- All types of crime occur at a lower rate in the division than across Waveney and Suffolk as a whole
- The most commonly recorded types of crime recorded in Pakefield are “other theft” and criminal damage

ADDITIONAL INFORMATION

Parishes in Division

Carlton Colville
Lowestoft

DATA SOURCES

Category	Indicator	Source
Demographic Profile	Quinary population table 2015	ONS 2015 mid-year population estimates
	Population pyramid 2015	ONS 2015 mid-year population estimates
	Ethnicity 2011	ONS 2011 Census
Economy	Employment by broad industrial sector 2015	ONS Business Register and Employment Survey via NOMIS
Labour market	Job Seekers Allowance Claimant Rate (% 16-64 population) 2014-2017	DWP via NOMIS
Education	School information and attainment 2014-2016	Suffolk County Council
	% 16-18 year olds NEET (Not in Employment, Education or Training) 2013-2017	Suffolk County Council
Deprivation	Index of Multiple Deprivation 2015	Department for Communities and Local Government
Health	Life expectancy at birth 2010-2014	Public Health England
Health	Standardised mortality ratio for deaths from all causes, cancer, circulatory disease and coronary heart disease, aged under 75 2010-2014. The standardised mortality ratio is the ratio of observed deaths in the study group to expected deaths in the general population.	Public Health England
Community Safety	Recorded crime rate per 1,000 resident population 2015	Suffolk Police

For more data and information about Pakefield Electoral Division, see the Suffolk Observatory www.suffolkobservatory.info

