

# GUNTON

## ELECTORAL DIVISION PROFILE 2017

This Division comprises Gunton and Corton, Harbour and Normanston wards

[www.suffolkobservatory.info](http://www.suffolkobservatory.info)



## **CONTENTS**

- Demographic Profile: Age & Ethnicity
- Economy and Labour Market
- Schools & NEET
- Index of Multiple Deprivation
- Health
- Crime & Community Safety
- Additional Information
- Data Sources

## ELECTORAL DIVISION PROFILES: AN INTRODUCTION

These profiles have been produced to support elected members, constituents and other interested parties in understanding the demographic, economic, social and educational profile of their neighbourhoods. We have used the latest data available at the time of publication.

Much more data is available from national and local sources than is captured here, but it is hoped that the profile will be a useful starting point for discussion, where local knowledge and experience can be used to flesh out and illuminate the information presented here.

The profile can be used to help look at some fundamental questions e.g.

- Does the age profile of the population match or differ from the national profile?
- Is there evidence of the ageing profile of the county in all the wards in the Division or just some?
- How diverse is the community in terms of ethnicity?
- What is the impact of deprivation on families and residents?
- Does there seem to be a link between deprivation and school performance?
- What is the breakdown of employment sectors in the area?
- Is it a relatively healthy area compared to the rest of the district or county?
- What sort of crime is prevalent in the community?

A vast amount of additional data is available on the **Suffolk Observatory**

[www.suffolkobservatory.info](http://www.suffolkobservatory.info)

The Suffolk Observatory is a free online resource that contains all Suffolk's vital statistics; it is the one-stop-shop for information and intelligence about Suffolk. Through data, reports and profiles, the Suffolk Observatory provides a comprehensive picture of the County. It is a great source for useful facts and figures that can be used for writing reports and presentations, informing strategic and business planning, preparing funding applications or supporting academic research. Data is presented around the key themes of education and skills, economy and employment, health and care, population, deprivation, housing, environment, transport and travel and crime. All areas of the county are covered, right down to district, ward and parish level, with information easily accessible in a variety of formats. You can also build your own reports by different themes and topics.

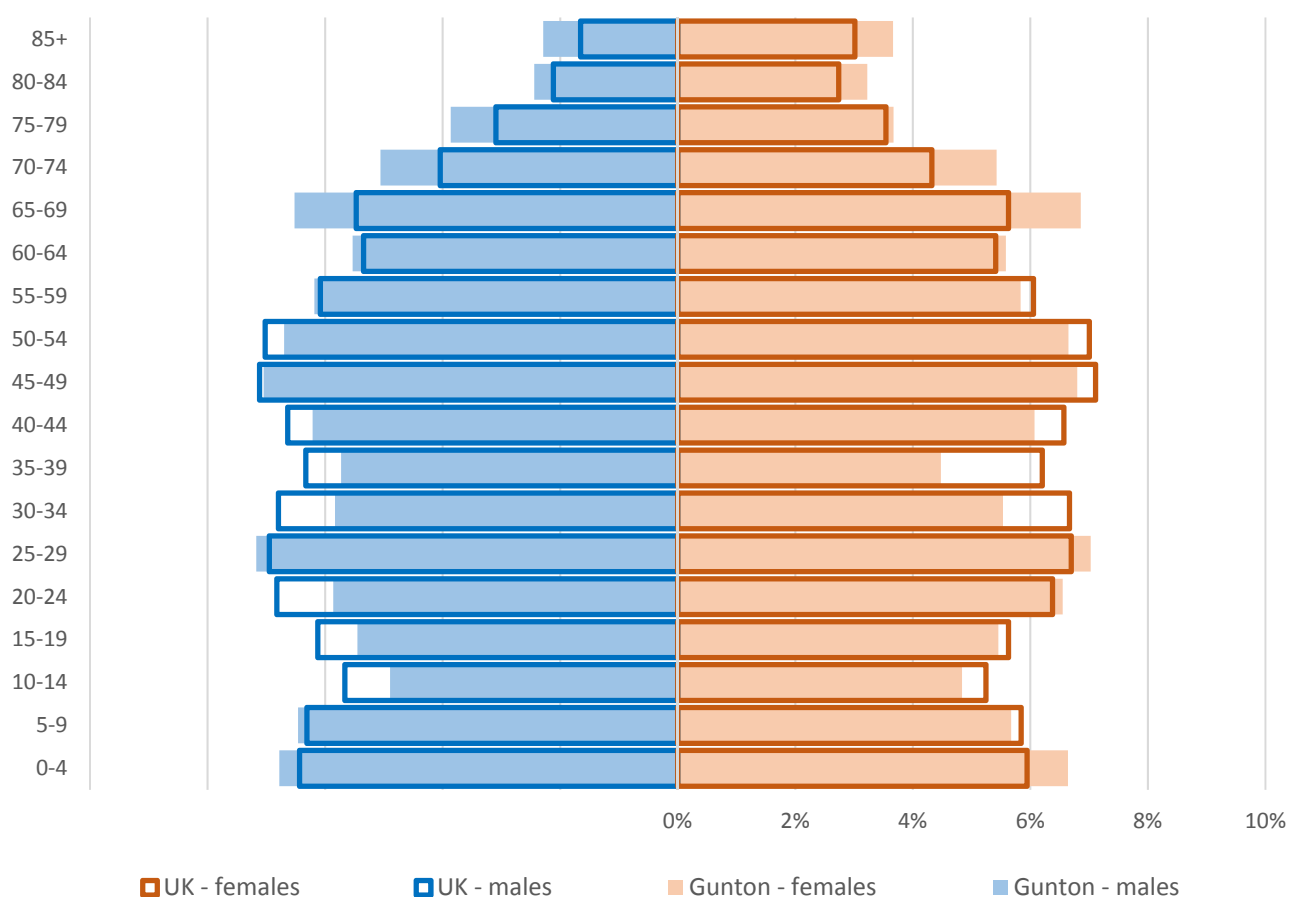
### Technical Notes:

1. Where Electoral Divisions do not exactly match ward boundaries, we have adopted a "best fit" approach to produce a dataset.
2. District, county and national level data is provided where possible to provide a context for comparisons.

## DEMOGRAPHIC PROFILE - AGE

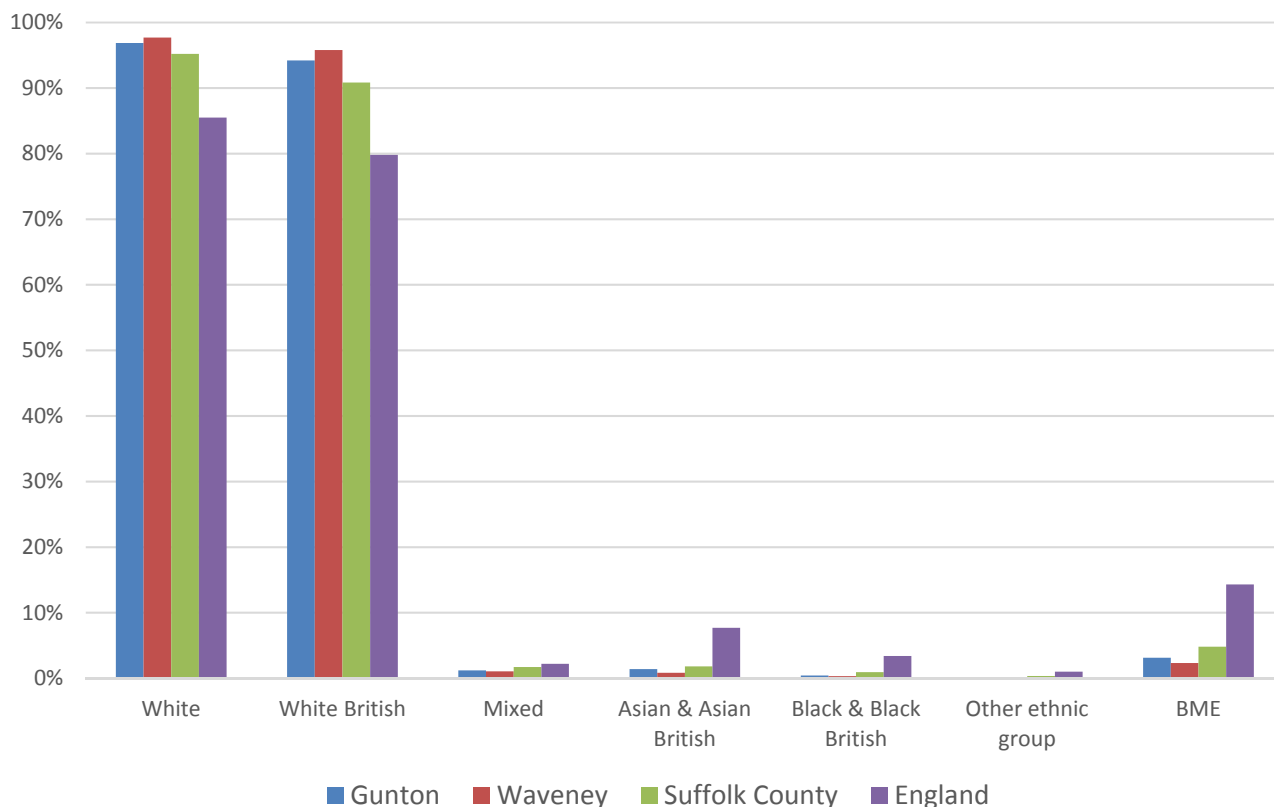
In mid-2015, the population of Gunton stood at 19,752, an increase of 3.3% since the 2011 Census. The age structure of the component wards and the division as a whole is set out below.

	Gunton Division	Gunton and Corton	Harbour	Normanston
All Ages	19,752	4,398	8,255	7,099
0-4	1,325	151	668	506
5-9	1,197	174	565	458
10-14	961	157	432	372
15-19	1,077	186	477	414
20-24	1,227	159	674	394
25-29	1,402	142	716	544
30-34	1,122	126	573	423
35-39	1,006	139	482	385
40-44	1,213	258	513	442
45-49	1,367	312	582	473
50-54	1,318	284	565	469
55-59	1,186	339	455	392
60-64	1,098	327	419	352
65-69	1,322	507	374	441
70-74	1,036	423	276	337
75-79	744	296	189	259
80-84	561	196	143	222
85+	590	222	152	216



- The age pyramid for Gunton is fairly similar to the national average, but shows a higher than average proportion of people over the age of 60
- The most common age groups in Gunton are 45-49 year olds and 65-69 year olds
- There is a shortfall in the proportion of people of working age, particularly 30-39 year olds, although this is not as pronounced as in many parts of Suffolk

## ETHNICITY

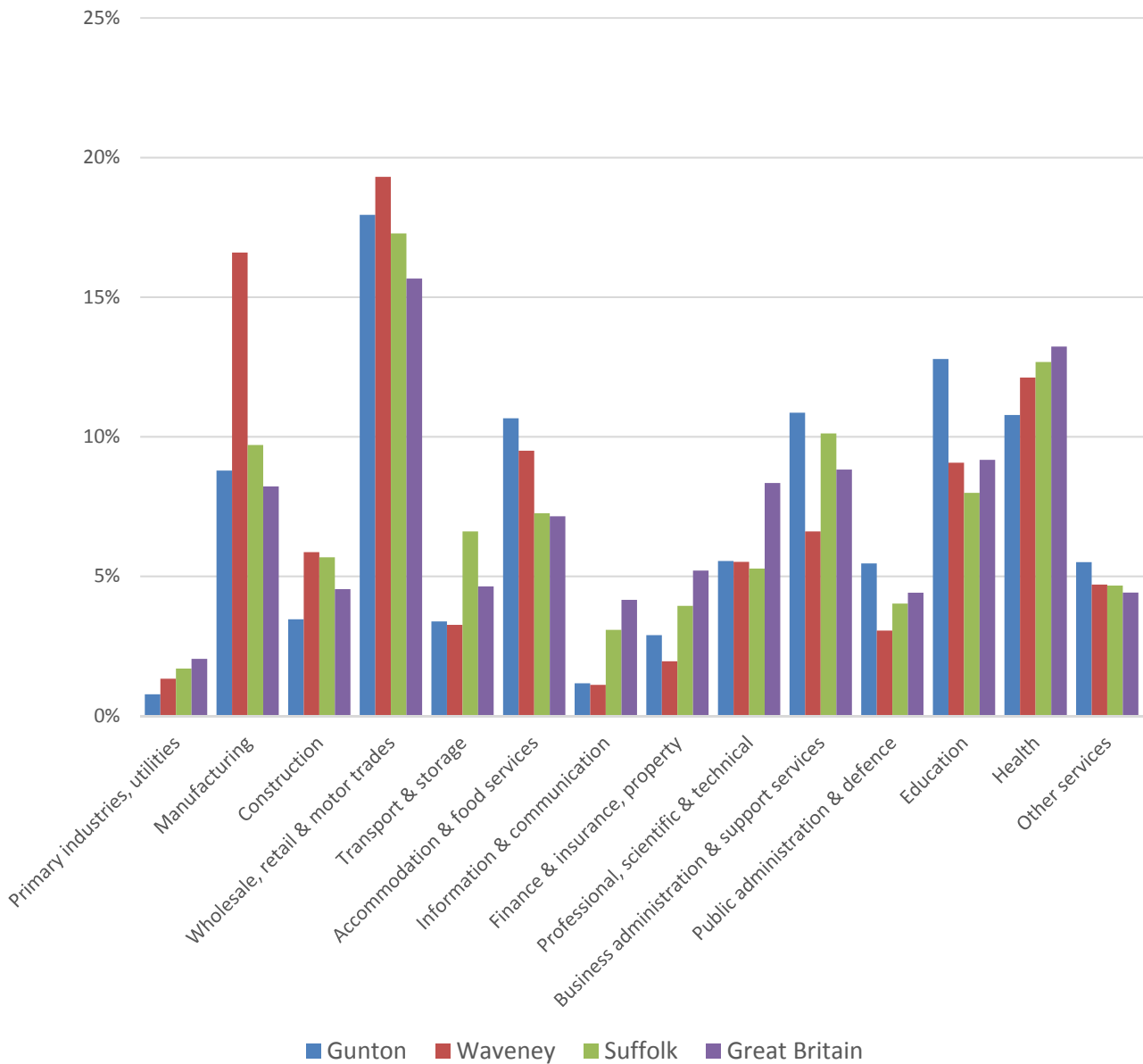


- According to the latest data (2011 Census), 96.9% (18,517) of the population of Gunton are white, while 94.2% are white British
- There are 599 (3.1%) people of black or minority ethnic origin in the division, somewhat higher than the Waveney average but below the overall level seen in Suffolk
- Gunton has a similar diversity profile to Waveney district, and generally lower proportions of minority ethnic groups than Suffolk as a whole

	All people	White		White British		Mixed		Asian and Asian British		Black and Black British		Other Ethnic Group		Black or Minority Ethnic Total	
	Count	Count	%	Count	%	Count	%	Count	%	Count	%	Count	%	Count	%
Gunton	19,116	18,517	96.9	18,010	94.2	229	1.2	266	1.4	82	0.4	22	0.1	599	3.1
Waveney	115,254	112,589	97.7	110,385	95.8	1,215	1.1	959	0.8	369	0.3	122	0.1	2,665	2.3
Suffolk	728,163	693,195	95.2	661,458	90.8	12,472	1.7	13,131	1.8	6,854	0.9	2,511	0.3	34,968	4.8
England & Wales			86.0		80.5		2.2		6.7		2.8		0.4		12.1

# ECONOMY

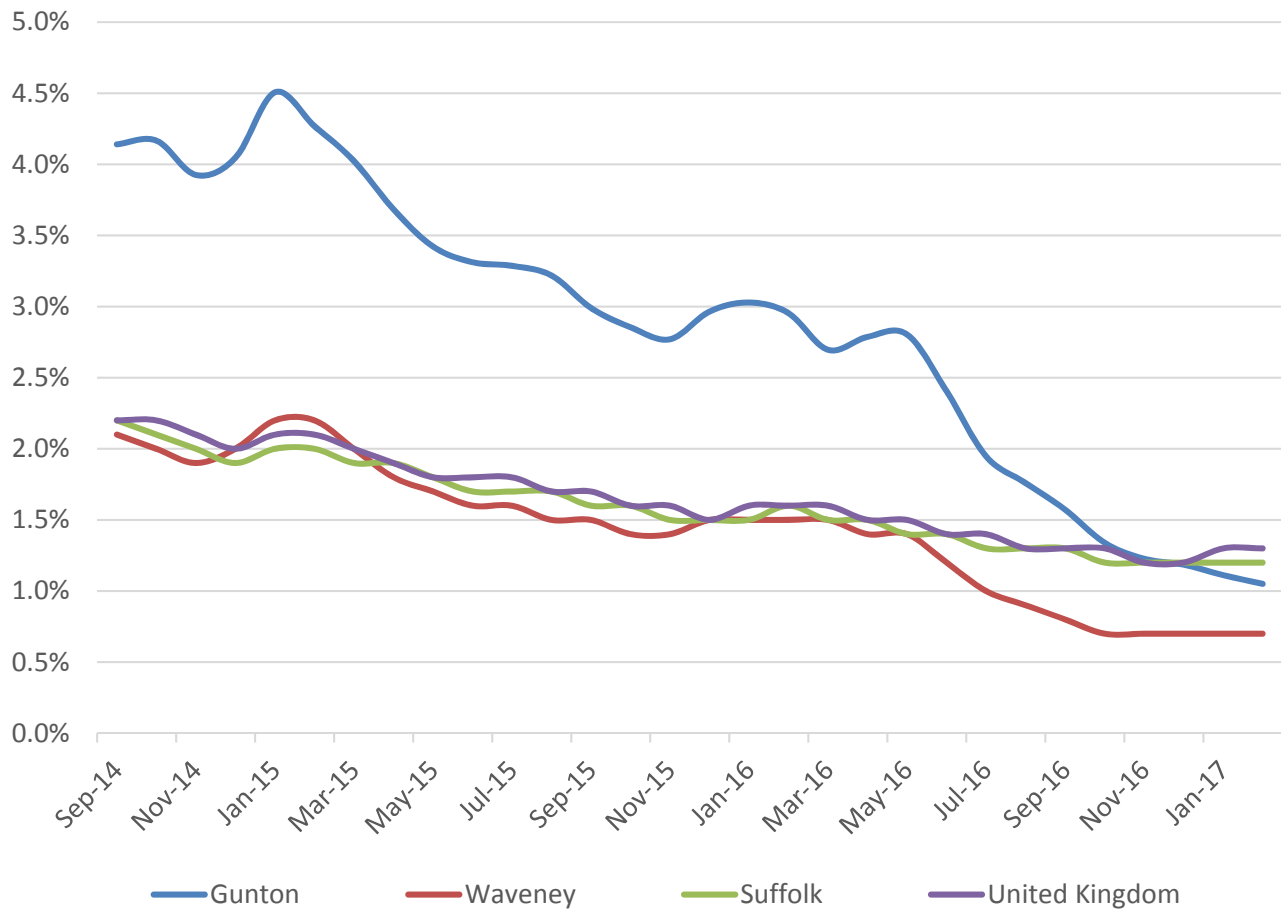
There are 12,200 people employed in Gunton.



- The employment profile in Gunton is fairly similar to the Waveney average, with the highest proportion of people in the division employed in wholesale, retail and motor trades (approaching one fifth of total employment)
- Health, accommodation and food services, business administration and support services, education and manufacturing are also important sectors in the division, each providing around one in 10 jobs in the area

# LABOUR MARKET

## JOB SEEKERS ALLOWANCE CLAIMANT RATE



- Gunton has seen a steadily declining Job Seekers Allowance (JSA) claimant rate over the last three years
- Historically, the division has had above an average claimant rate but it is now similar to the county and national average
- In percentage terms, around 1% of the working age population (aged 16-64) are claiming JSA



# SCHOOLS

## SCHOOL INFORMATION

### Schools in the Division

Name	Phase	Average cohort size at:			Latest Ofsted	Latest Ofsted Date
		Foundation Stage (age 5)	KS2 (age 11)	KS4 (age 16)		
Poplars CP School	Primary	73	66		Good	24/06/2014
Roman Hill Primary School	Primary	70	59		Good	29/01/2014
Northfield St Nicholas Primary Academy	Primary	59	58		Not yet inspected as an Academy	
Gunton Primary Academy	Primary	45	42			
St Margaret's Primary Academy	Primary	53	27			
Corton CEVCP School	Primary	16	13		Good	07/03/2017
Harbour	PRU		1		Good	27/09/2016
Old Warren House	PRU			5	Good	14/11/2016
Ormiston Denes Academy	Upper		9	187	Requires Improvement	04/02/2015

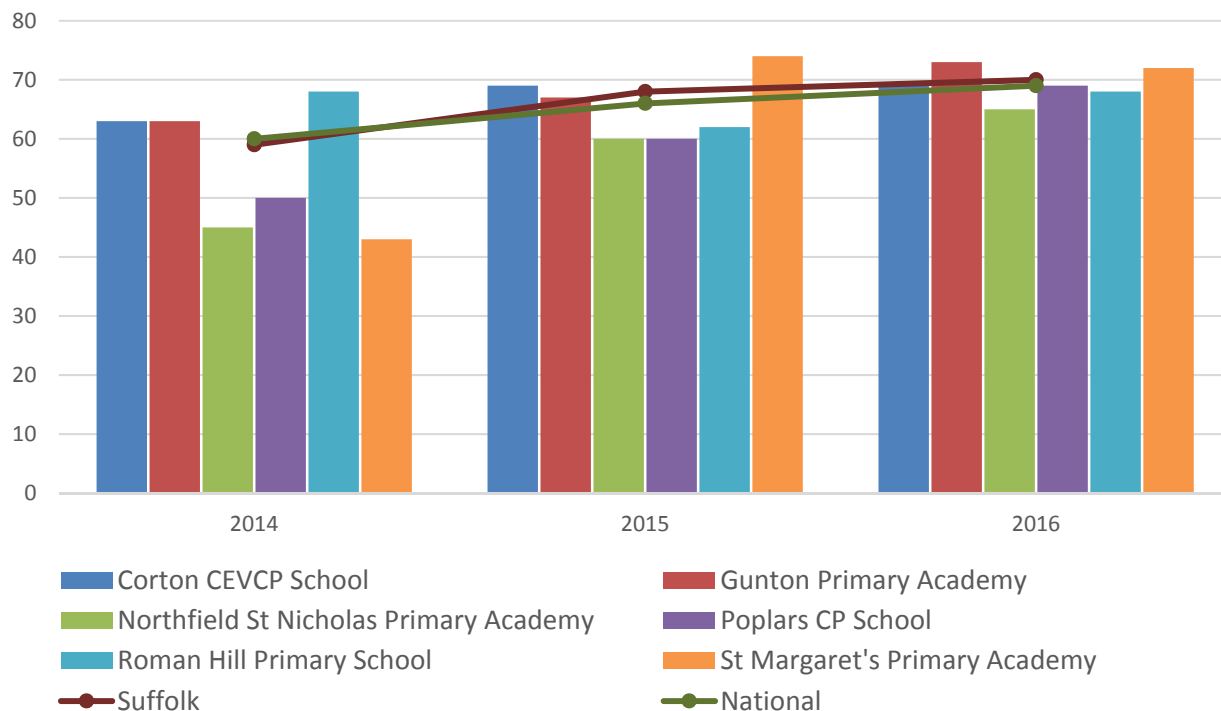
### School Catchment overlaps with the Division

Name	Phase	Average cohort size at:				Latest Ofsted	Latest Ofsted Date
		Foundation Stage (age 5)	KS2 (age 11)	KS4 (age 16)	KS5 (age 18)		
Woods Loke CP School	Primary	59	62			Requires Improvement	17/03/2015
Benjamin Britten Music Academy and Centre of Excellence in Mathematics	Upper			198		Not yet inspected as an Academy	

## SCHOOL ATTAINMENT

### Foundation Stage Profile (reception)

% pupils achieving Good Level of Development (GLD)

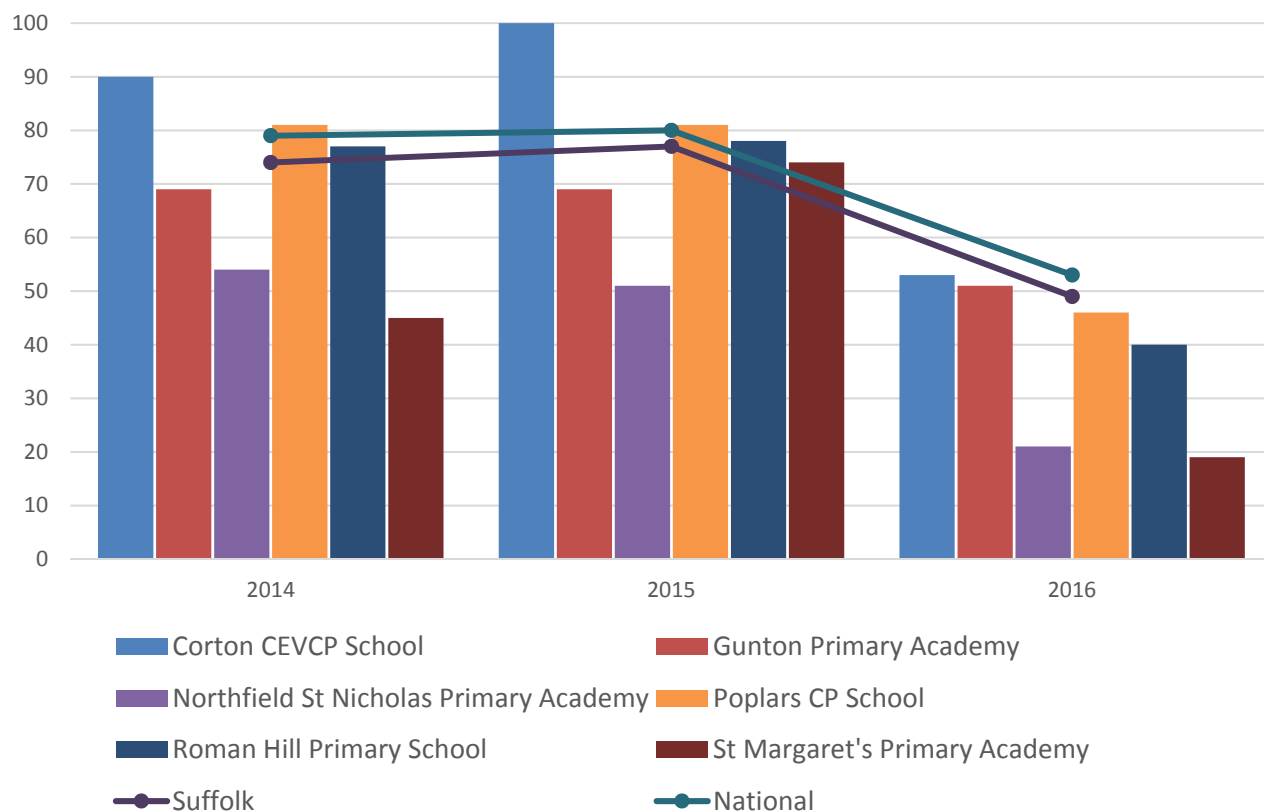


- In general, Foundation stage attainment at schools in Gunton has seen steady improvement from 2014 to 2016
- The latest results show that attainment at Corton CEVCP, Gunton Primary Academy, Poplars CP and St Margaret's Primary Academy Schools was at or above the national average of 69% achieving a Good Level of Development
- The remaining two schools; Northfield St Nicholas and Roman Hill Primaries, saw attainment close to the national average at 65% and 68% of pupils respectively achieving a Good Level of Development

## Key Stage 2 (age 11)

Pupil Achievement in all three subjects, Reading, Writing and Mathematics  
(2014–2015 as % Level 4 or better & 2016 % Expected Level or better)

In July 2016, there was a change in the way pupil achievement is measured at the end of KS2. Prior to 2016, pupils received National Curriculum Level grades for English and Maths, with L4 being the expected level at the end of Key Stage 2. In 2016 the measure scaled score and shows whether or not a pupil has achieved the national standard for that subject

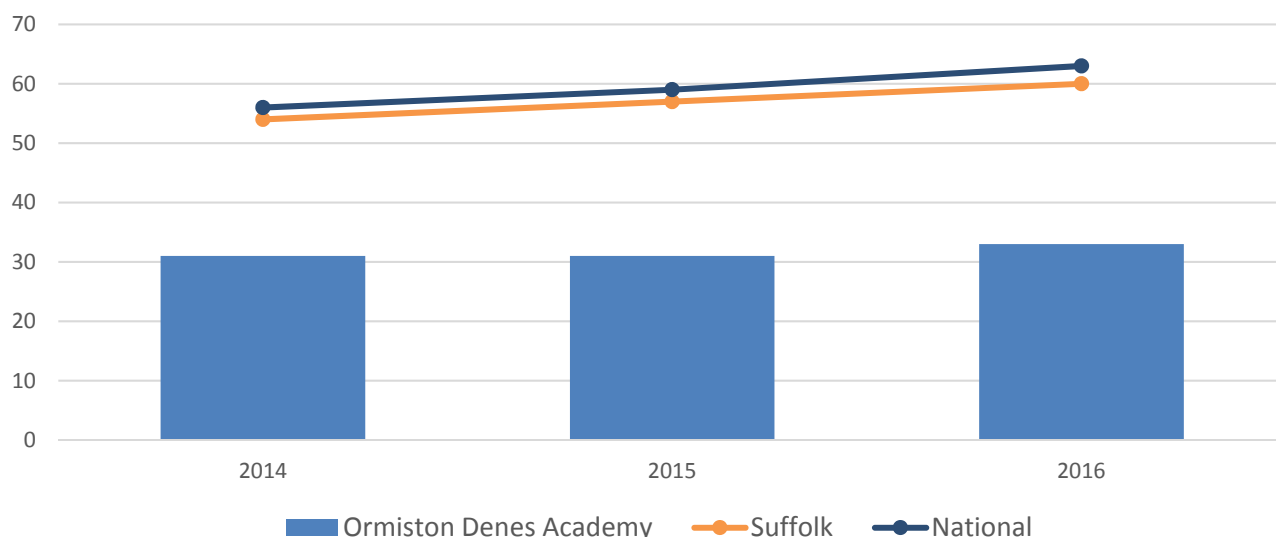


- Key stage 2 attainment at schools in Gunton has been quite variable over the past three years
- Corton CEVCP School stands out as having a greater percentage of pupils achieving the expected level or better than the national average most consistently
- Roman Hill Primary and Poplars CP Schools have also seen consistently good attainment though not always meeting the county and national averages
- Attainment at Northfield St Nicholas Primary Academy has been below average in each of the past three years

## GCSE (Key Stage 4) (age 16)

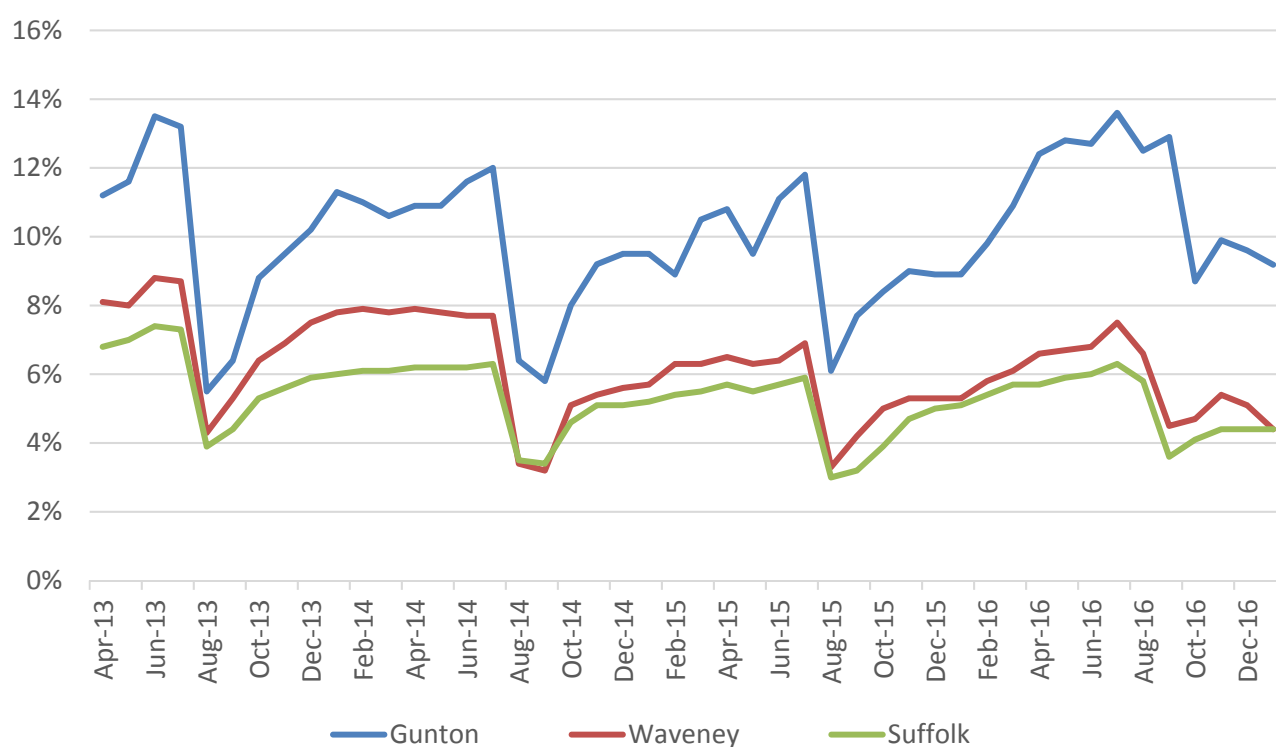
% pupils achieving five or more GCSEs (or equivalent) at A\*-C including English and Mathematics

In July 2016, an additional measure of pupil achievement at Key Stage 4 was introduced but for the purposes of this profile and to demonstrate change over time, we have presented consistent data for the period 2014-2016 using the % pupils achieving five or more GCSEs (or equivalent) at A\*-C including English and Mathematics.



- Key stage 4 (GCSE) attainment in the division has been consistently below the county and national averages for the period 2014-2016
- In 2016 only one third of pupils at The Denes High School achieved 5 or more A\*-C grades including English and Maths compared to 63% nationally
- Attainment at the school was steady from 2014 to 2015 but saw a slight improvement in 2016

## NEET % (NOT IN EDUCATION, EMPLOYMENT OR TRAINING)

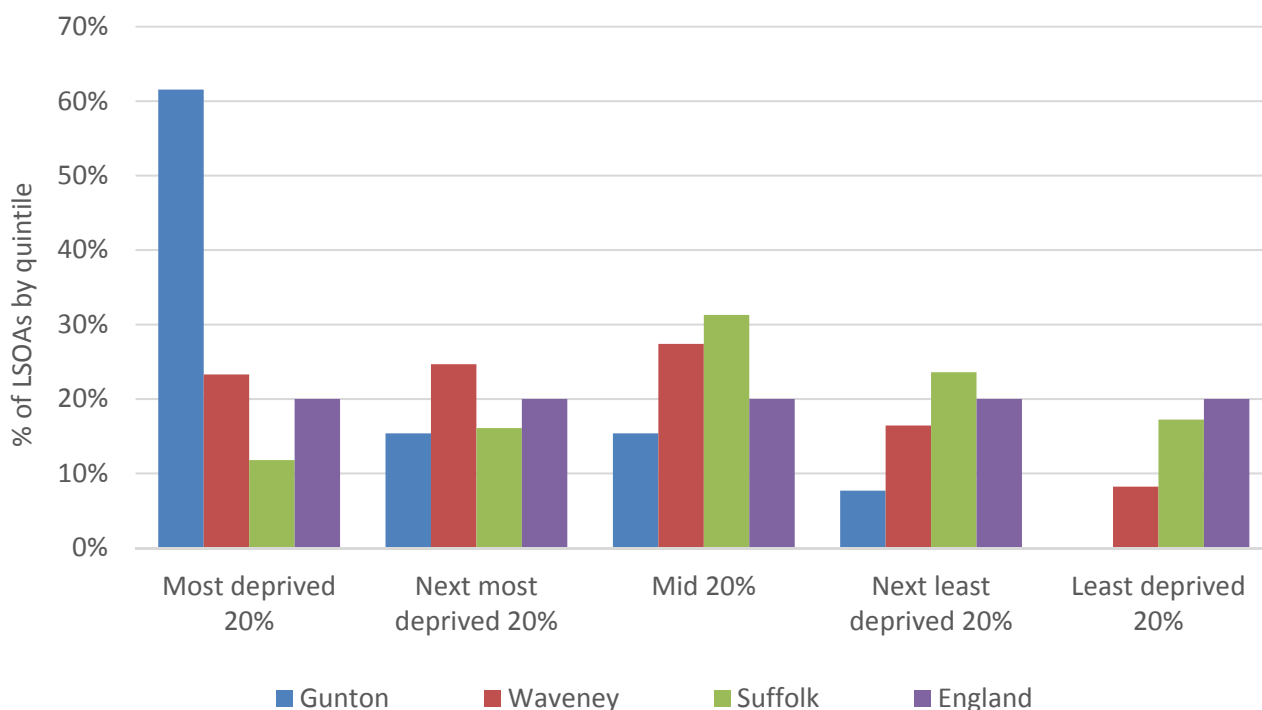


- In January 2017, 9.2% of 16-18 year olds in Gunton were classified as NEET (where current activity is known)
- NEET levels in Gunton are consistently above the district and county averages
- Gunton has the highest level of NEETs of all divisions in Suffolk

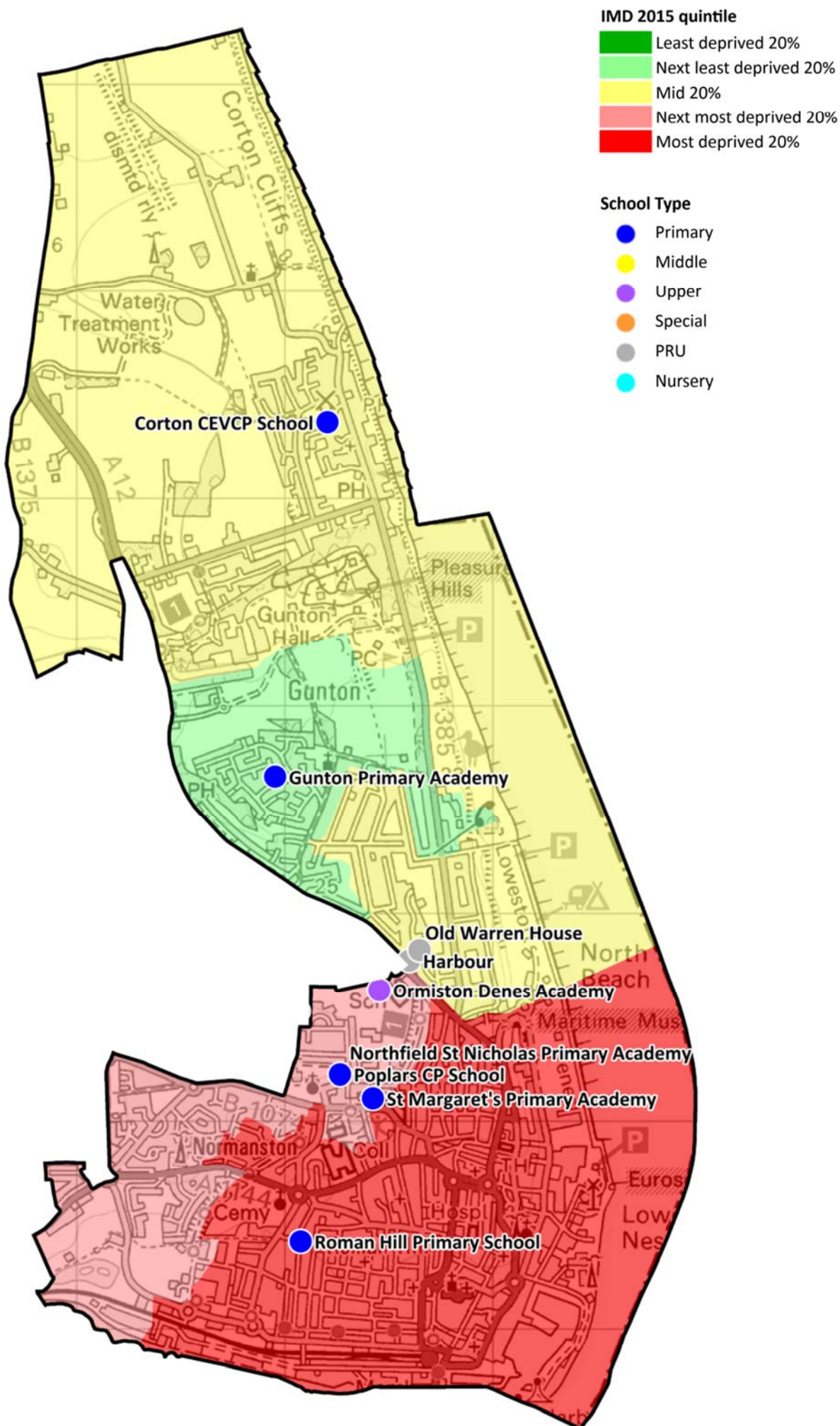
## INDEX OF MULTIPLE DEPRIVATION (IMD) 2015 (SEE MAP OVERLEAF)

The IMD combines a number of indicators, chosen to cover a range of economic, social and housing issues, into a single deprivation score for each small area in England. This allows each area to be ranked relative to one another according to their level of deprivation. Small areas (Lower Super Output Areas, average population 1,500) are most usually described as being in 1 of 5 quintile bands. The bottom quintile represents the 20% of areas that are the most deprived in the country; these are shaded red on the map. The top quintile represents the least deprived areas in the country, and is shaded green.

The Index is widely used to analyse patterns of deprivation, identify areas that would benefit from special initiatives or programmes and as a tool to determine eligibility for specific funding streams.



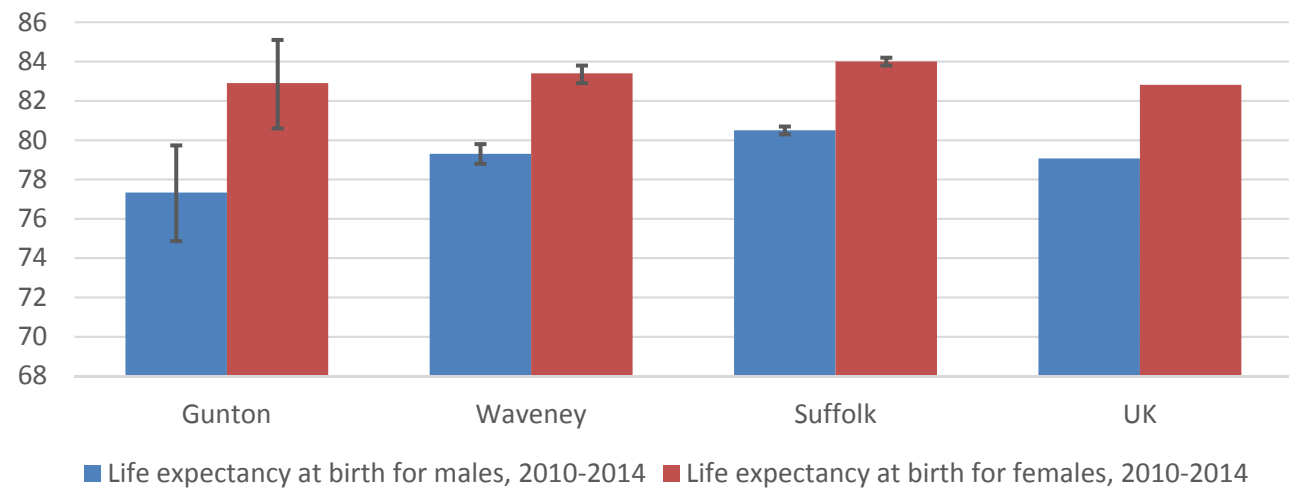
- The IMD 2015 shows that there is some variation in relative deprivation levels in Gunton, though in general the area has quite high levels of deprivation
- Of the thirteen Lower Layer Super Output Areas (LSOA) comprising the division, one is ranked in the second least deprived 20% of areas (LSOAs) in the country, two are in the mid quintile, two are in the second most deprived quintile and eight are in the most deprived quintile



# HEALTH

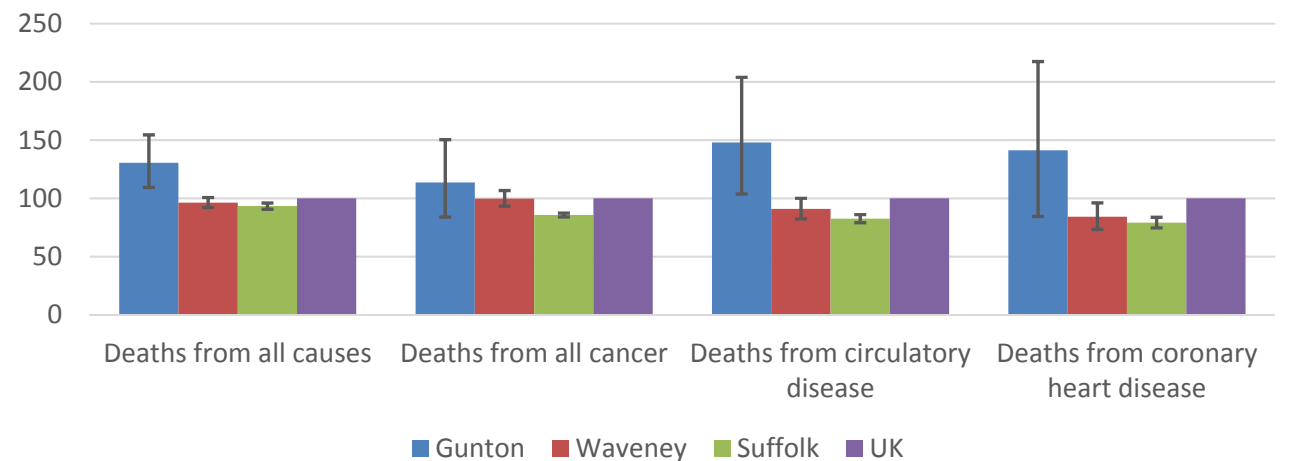
The local data used here is based on relatively small numbers. The confidence limits provide an indication of the reliability of the data. The 95% confidence intervals utilised on the chart provide a range within which there is 95% chance of the true result lying.

## LIFE EXPECTANCY AT BIRTH



- The estimated life expectancy figure for women in Gunton is similar to the Waveney and national averages at around 83 years, but one year below the Suffolk level
- For men, the life expectancy estimate in Gunton is lower than average, at just over 77 years, compared to 80.5 for Suffolk as a whole

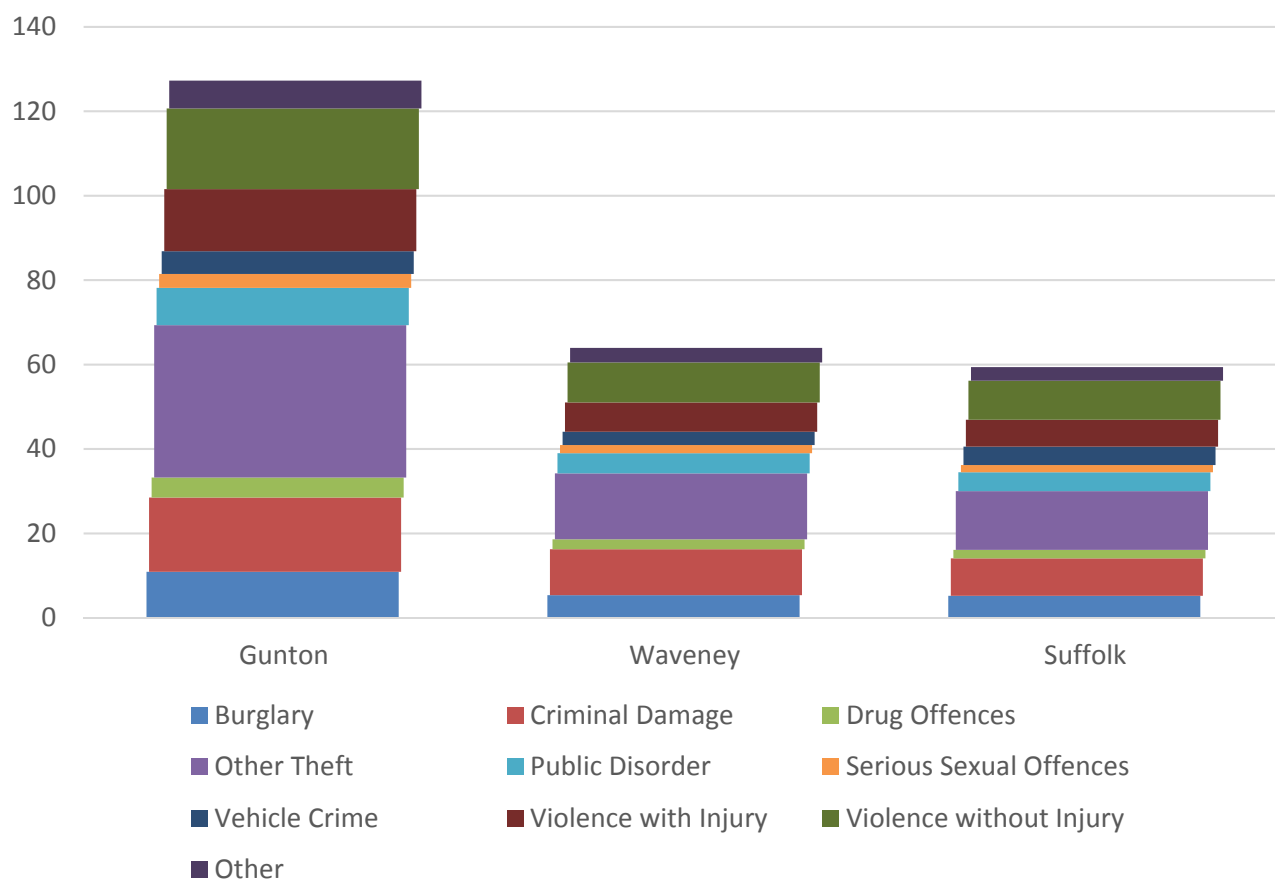
## DEATHS, UNDER 75 YEARS, STANDARDISED MORTALITY RATIO



- Rates of deaths from all causes are high in Gunton.
- Even taking into account the confidence intervals applied to this data, deaths from all causes and from circulatory diseases are higher than the Waveney, Suffolk and UK average
- The standardised mortality ratio data shown here means that for every 100 early deaths from all causes across the UK as a whole, there are an estimated 131 comparable deaths in Gunton



## CRIME & COMMUNITY SAFETY



- Crime levels in Gunton are very high, with 127 crimes per 1,000 residents in 2015, double the Waveney average
- All types of crime were recorded relatively more frequently in Gunton than across Suffolk as a whole, but the levels of violent crime are of particular concern, with almost 15 instances of violence with injury and almost 19 cases of violence without injury per 1,000 residents. This is more than double the level that these crimes are recorded across the county as a whole

## ADDITIONAL INFORMATION

### Parishes in Division

Corton  
Lowestoft

## DATA SOURCES

Category	Indicator	Source
Demographic Profile	Quinary population table 2015	ONS 2015 mid-year population estimates
	Population pyramid 2015	ONS 2015 mid-year population estimates
	Ethnicity 2011	ONS 2011 Census
Economy	Employment by broad industrial sector 2015	ONS Business Register and Employment Survey via NOMIS
Labour market	Job Seekers Allowance Claimant Rate (% 16-64 population) 2014-2017	DWP via NOMIS
Education	School information and attainment 2014-2016	Suffolk County Council
	% 16-18 year olds NEET (Not in Employment, Education or Training) 2013-2017	Suffolk County Council
Deprivation	Index of Multiple Deprivation 2015	Department for Communities and Local Government
Health	Life expectancy at birth 2010-2014	Public Health England
Health	Standardised mortality ratio for deaths from all causes, cancer, circulatory disease and coronary heart disease, aged under 75 2010-2014. The standardised mortality ratio is the ratio of observed deaths in the study group to expected deaths in the general population.	Public Health England
Community Safety	Recorded crime rate per 1,000 resident population 2015	Suffolk Police

For more data and information about Gunton Electoral Division, see the Suffolk Observatory [www.suffolkobservatory.info](http://www.suffolkobservatory.info)

d

