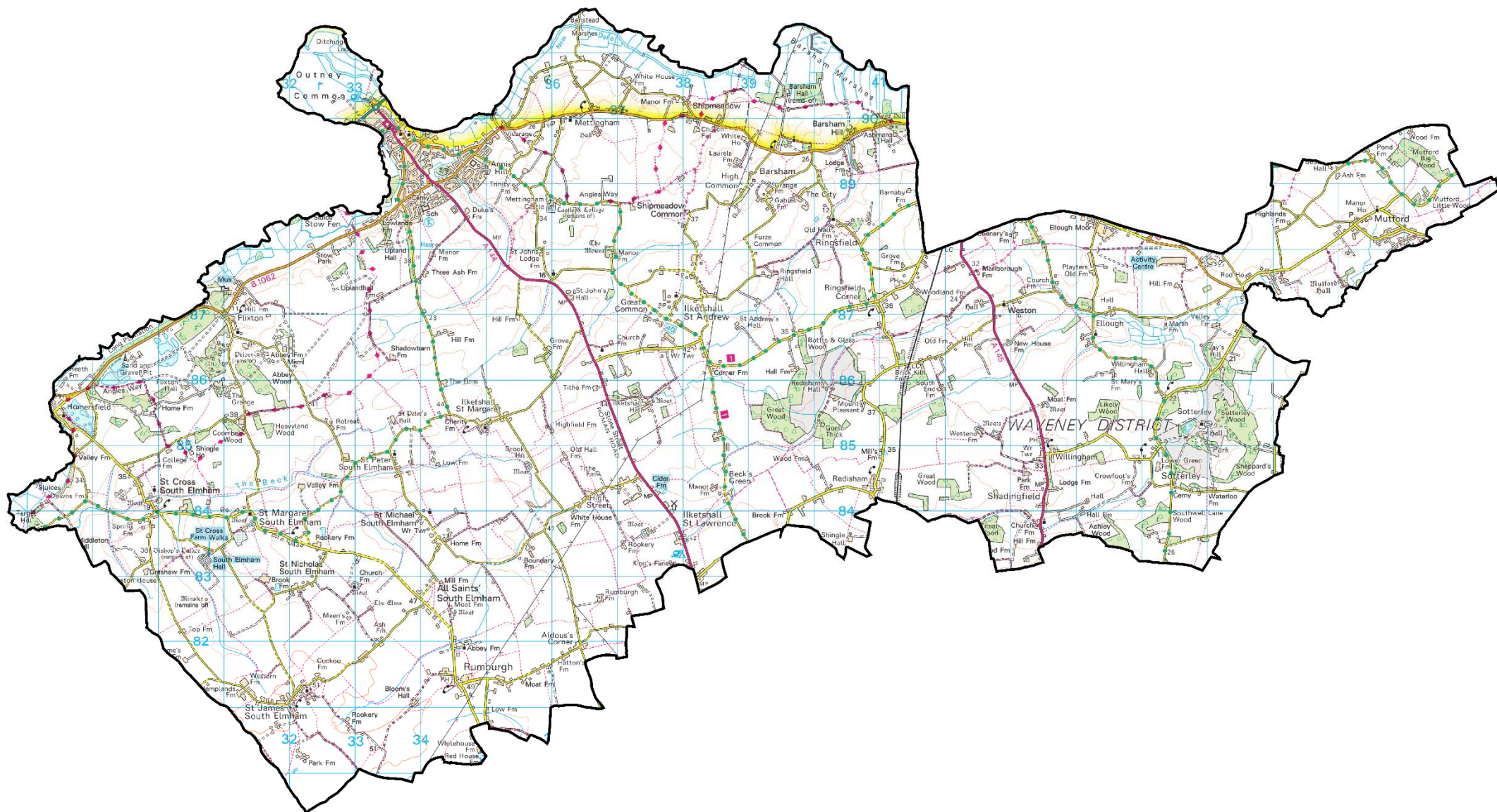


BUNGAY

ELECTORAL DIVISION PROFILE 2017

This Division comprises Bungay and Wainford wards in their entirety plus part of The Saints ward

www.suffolkobservatory.info



CONTENTS

- Demographic Profile: Age & Ethnicity
- Economy and Labour Market
- Schools & NEET
- Index of Multiple Deprivation
- Health
- Crime & Community Safety
- Additional Information
- Data Sources

ELECTORAL DIVISION PROFILES: AN INTRODUCTION

These profiles have been produced to support elected members, constituents and other interested parties in understanding the demographic, economic, social and educational profile of their neighbourhoods. We have used the latest data available at the time of publication.

Much more data is available from national and local sources than is captured here, but it is hoped that the profile will be a useful starting point for discussion, where local knowledge and experience can be used to flesh out and illuminate the information presented here.

The profile can be used to help look at some fundamental questions e.g.

- Does the age profile of the population match or differ from the national profile?
- Is there evidence of the ageing profile of the county in all the wards in the Division or just some?
- How diverse is the community in terms of ethnicity?
- What is the impact of deprivation on families and residents?
- Does there seem to be a link between deprivation and school performance?
- What is the breakdown of employment sectors in the area?
- Is it a relatively healthy area compared to the rest of the district or county?
- What sort of crime is prevalent in the community?

A vast amount of additional data is available on the **Suffolk Observatory**

www.suffolkobservatory.info

The Suffolk Observatory is a free online resource that contains all Suffolk's vital statistics; it is the one-stop-shop for information and intelligence about Suffolk. Through data, reports and profiles, the Suffolk Observatory provides a comprehensive picture of the County. It is a great source for useful facts and figures that can be used for writing reports and presentations, informing strategic and business planning, preparing funding applications or supporting academic research. Data is presented around the key themes of education and skills, economy and employment, health and care, population, deprivation, housing, environment, transport and travel and crime. All areas of the county are covered, right down to district, ward and parish level, with information easily accessible in a variety of formats. You can also build your own reports by different themes and topics.

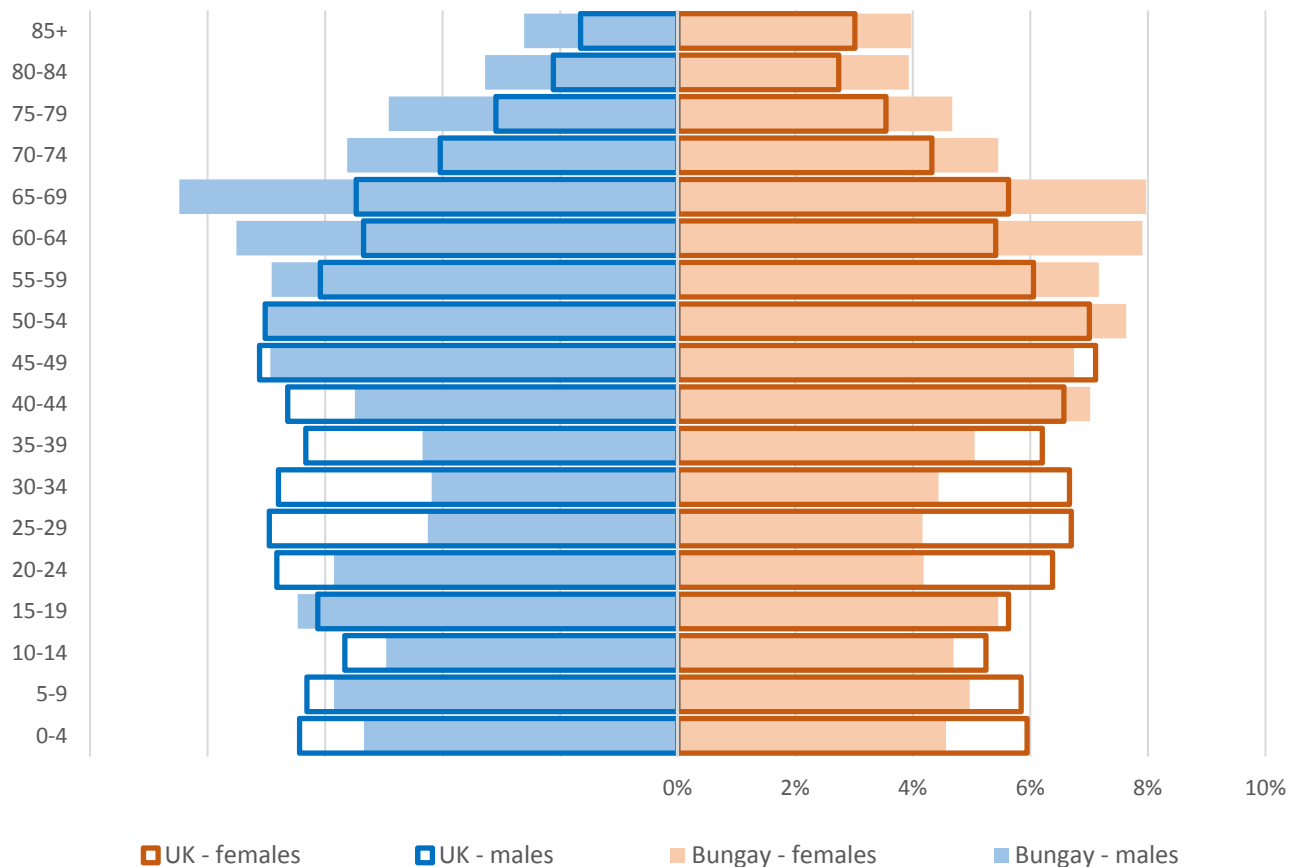
Technical Notes:

1. Where Electoral Divisions do not exactly match ward boundaries, we have adopted a "best fit" approach to produce a dataset.
2. District, county and national level data is provided where possible to provide a context for comparisons.

DEMOGRAPHIC PROFILE - AGE

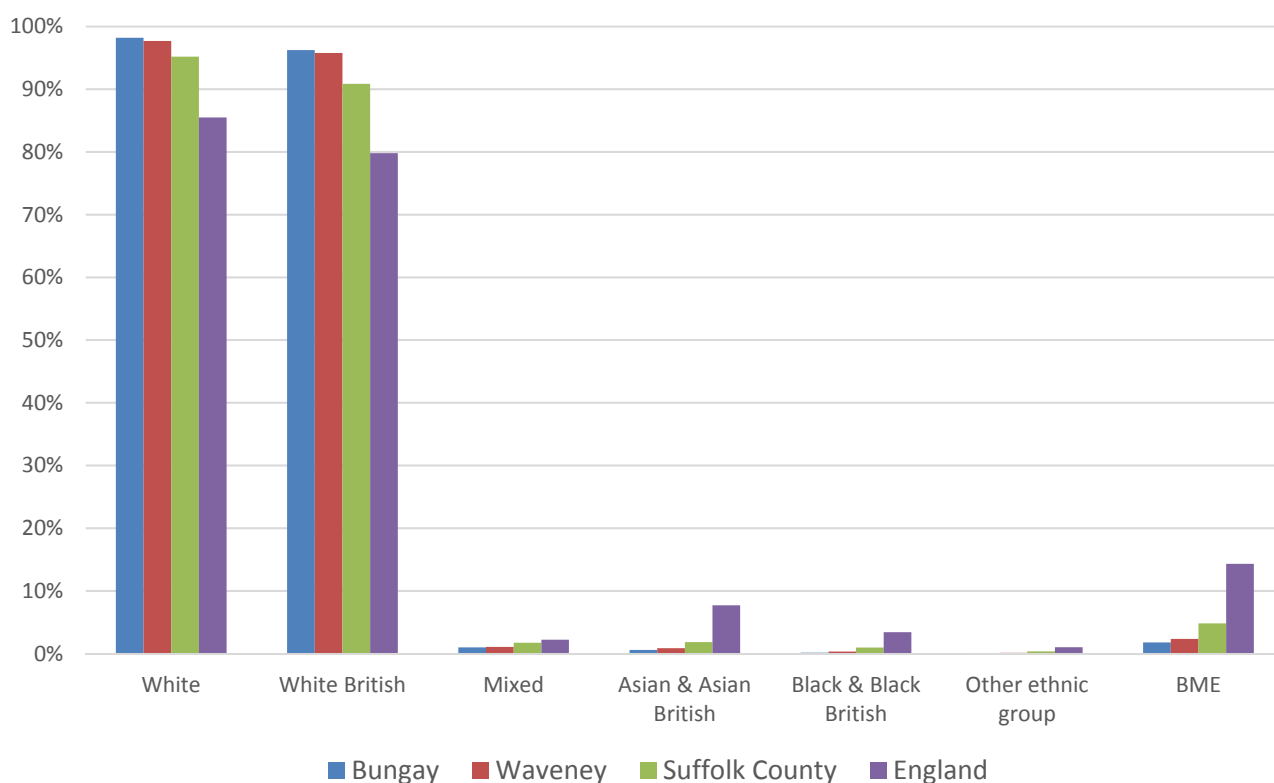
In mid-2015, the population of Bungay stood at 9,246, a decrease of 3.2% since the 2011 Census. The age structure of the component wards and the division as a whole is set out below. *This ward is not entirely within the division boundary, hence the figures do not sum.

	Bungay Division	Bungay	The Saints*	Wainford
All Ages	9,246	5,056	2,233	2,210
0-4	457	268	107	88
5-9	499	286	114	104
10-14	446	233	111	115
15-19	550	334	115	110
20-24	462	264	106	105
25-29	389	261	61	76
30-34	399	240	80	88
35-39	435	267	75	97
40-44	580	316	138	142
45-49	632	321	157	168
50-54	678	299	174	225
55-59	651	307	197	172
60-64	713	345	209	180
65-69	760	343	231	216
70-74	512	278	123	130
75-79	443	240	117	102
80-84	334	224	60	60
85+	306	230	58	32



- The age pyramid for Bungay shows a higher than average proportion of people over the age of 50
- The commonest age group in Bungay is 65-69, followed by 60-64. The number of people of retirement age is already high and looks set to increase markedly in the coming years
- There is a much lower than average number of people of working age, particularly 20-39 year olds

ETHNICITY

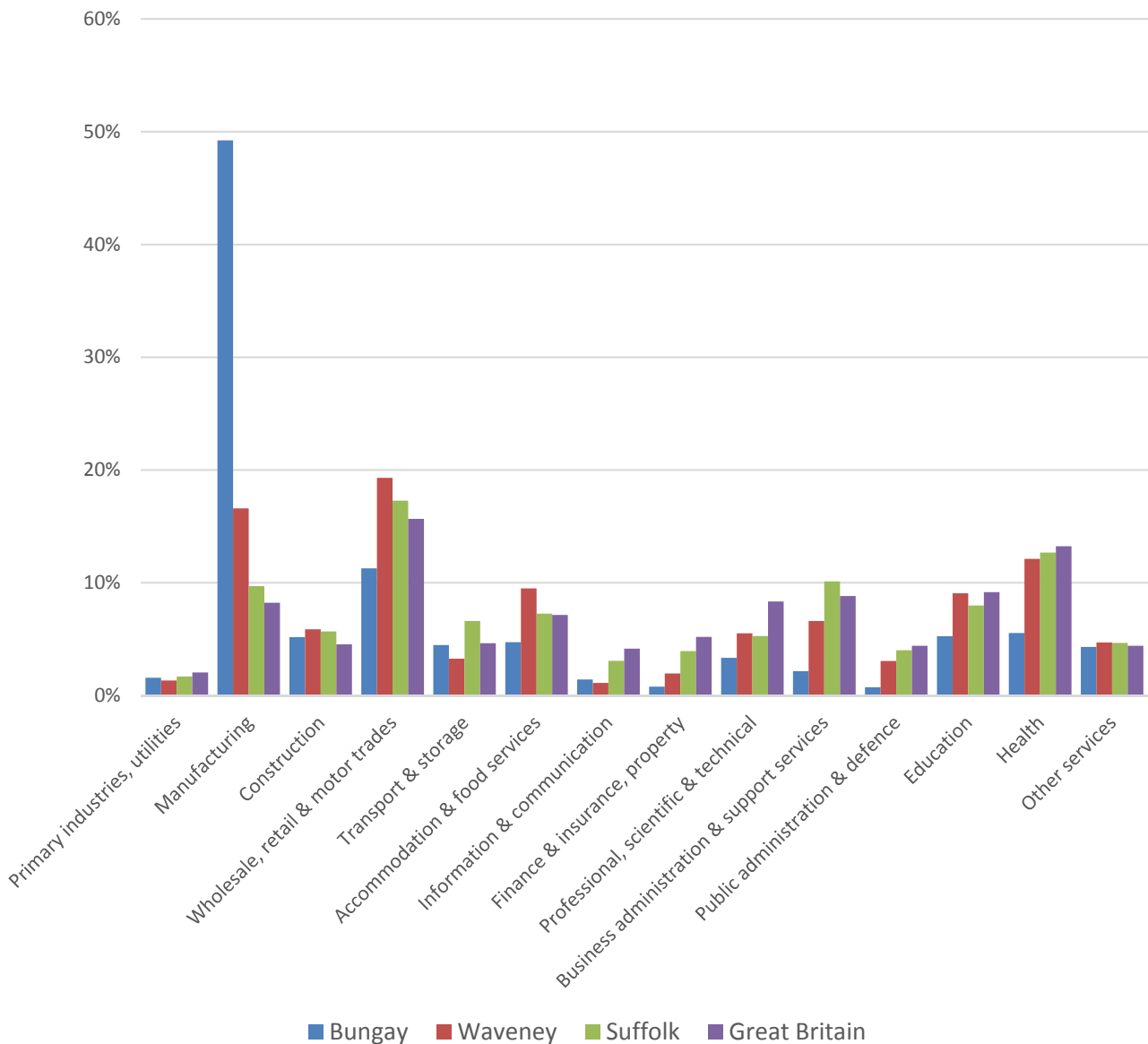


- According to the latest data (2011 Census), 98.2% (9,383) of the population of Bungay are white, while 96.2% are white British
- There are 171 (1.8%) people of black or minority ethnic origin in the division
- Bungay has a similar diversity profile to Waveney district, and generally lower proportions of minority ethnic groups than Suffolk as a whole

	All people	White		White British		Mixed		Asian and Asian British		Black and Black British		Other Ethnic Group		Black or Minority Ethnic Total	
	Count	Count	%	Count	%	Count	%	Count	%	Count	%	Count	%	Count	%
Bungay	9,554	9,383	98.2	9,194	96.2	93	1.0	56	0.6	13	0.1	9	0.1	171	1.8
Waveney	115,254	112,589	97.7	110,385	95.8	1,215	1.1	959	0.8	369	0.3	122	0.1	2,665	2.3
Suffolk	728,163	693,195	95.2	661,458	90.8	12,472	1.7	13,131	1.8	6,854	0.9	2,511	0.3	34,968	4.8
England & Wales			86.0		80.5		2.2		6.7		2.8		0.4		12.1

ECONOMY

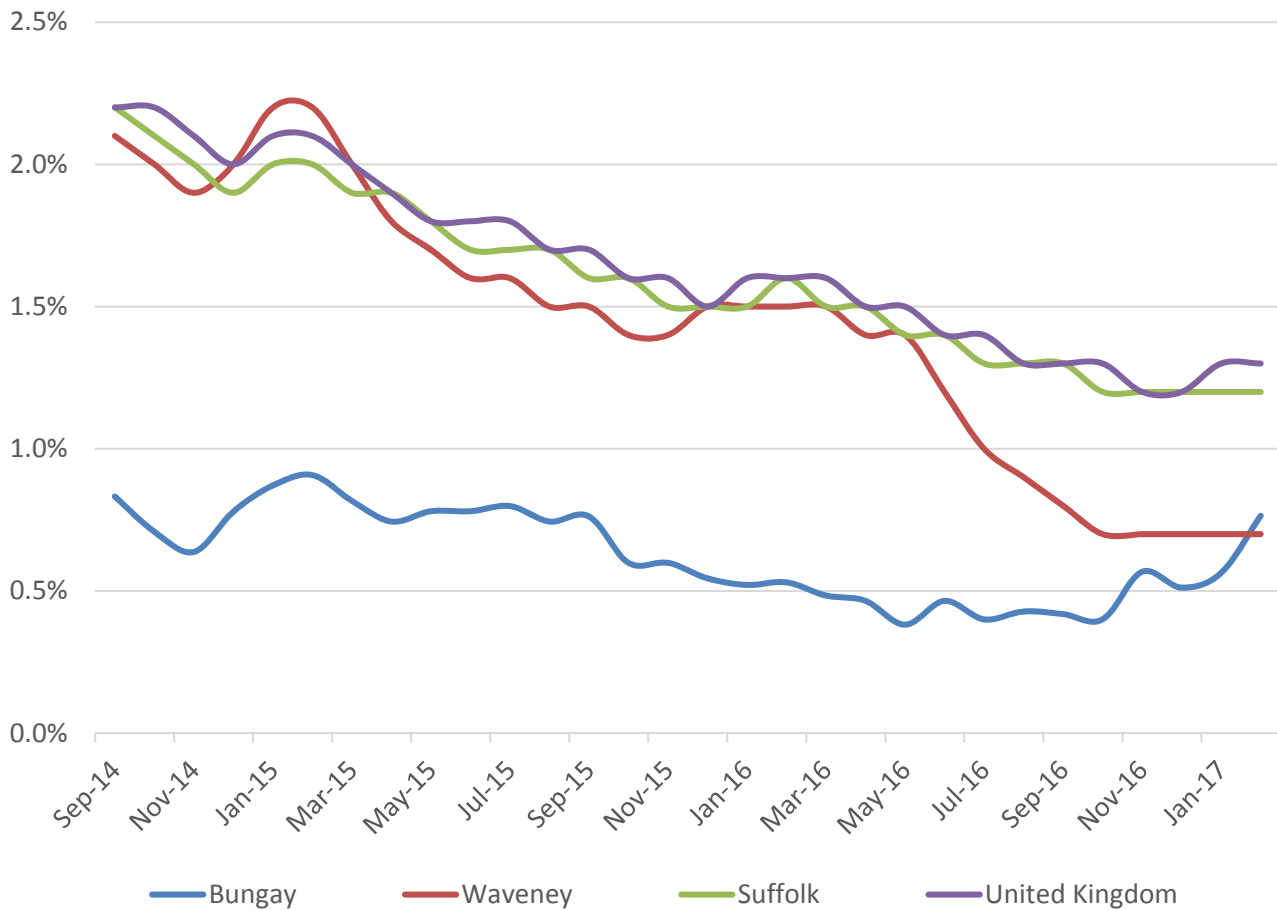
There are 4,000 people employed in Bungay.



- Manufacturing is by far the most important industry in Bungay in terms of employment, with nearly half of all workers in the division employed in this sector, a much higher proportion than in Waveney, Suffolk and the country overall
- Such is the dominance of manufacturing employment in the division that almost all other sectors have below average proportions of employment

LABOUR MARKET

JOB SEEKERS ALLOWANCE CLAIMANT RATE



- Bungay has seen a JSA claimant rate fluctuating between well below 1% of the working age population over the past three years
- At 0.8%, the rate is currently similar to the Waveney average but in general the division has a lower claimant rate than the district overall

SCHOOLS

SCHOOL INFORMATION

Schools in the Division

Name	Phase	Average cohort size at:				Latest Ofsted	Latest Ofsted Date
		Foundation Stage (age 5)	KS2 (age 11)	KS4 (age 16)	KS5 (age 18)		
Bungay Primary School	Primary	27	28			Good	04/10/2016
Ilketshall St Lawrence School	Primary	14	13			Good	27/06/2013
Ringsfield CEVCP School	Primary	9	7			Good	23/06/2015
St Edmund's Catholic Primary School	Primary	15	14			Not yet inspected as an Academy	
Bungay High School	Upper			226	109	Good	28/09/2016

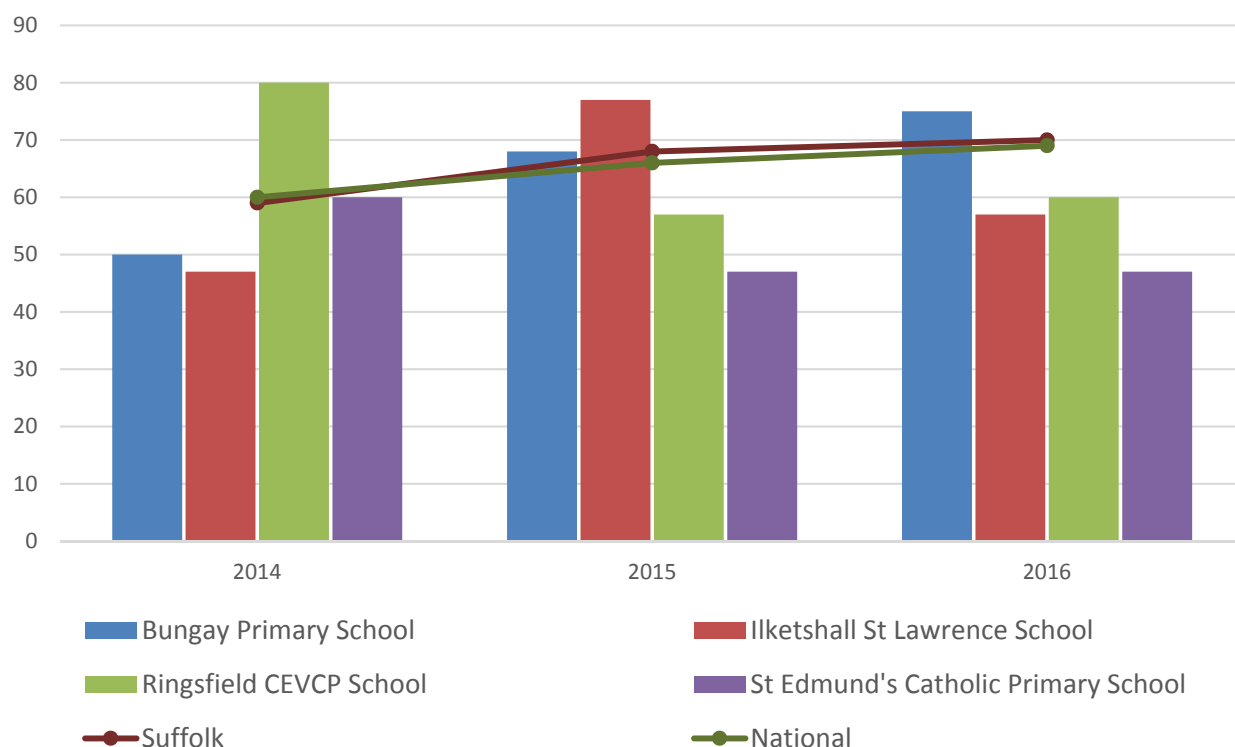
School Catchment overlaps with the Division

Name	Phase	Average cohort size at:				Latest Ofsted	Latest Ofsted Date
		Foundation Stage (age 5)	KS2 (age 11)	KS4 (age 16)	KS5 (age 18)		
Barnby and North Cove CP School	Primary	10	7			Requires Improvement	04/02/2016
Brampton CEVCP School	Primary	9	12			Good	04/07/2013
Edgar Sewter CP School	Primary	36	33			Good	07/05/2015
Worlingham CEVCP School	Primary	50	40			Good	20/06/2013
Sir John Leman High School	Upper			236	88	Good	12/10/2016

SCHOOL ATTAINMENT

Foundation Stage Profile (reception)

% pupils achieving Good Level of Development (GLD)

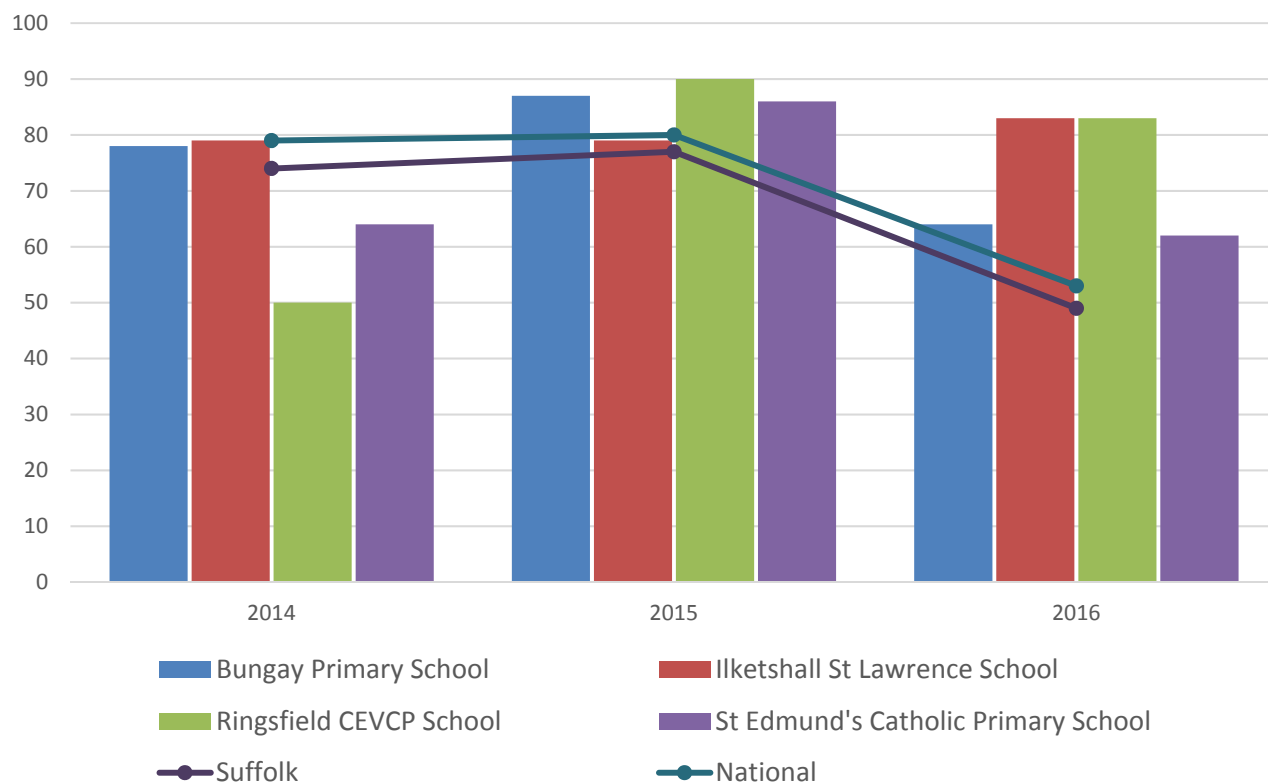


- Foundation stage attainment in Bungay division has varied significantly between schools and year by year
- No school has consistently achieved better attainment than the county average over the past three years
- In 2016, Bungay Primary was the only school in the division to have an average attainment level above the county and national average, with 75% of pupils at the school achieving a Good Level of Development compared to 70% in Suffolk and 69% nationally
- In 2015 and 2016 Ringsfield CP and St Edmund's Catholic Primary Schools had below average attainment, in contrast to much stronger results in 2014

Key Stage 2 (age 11)

Pupil Achievement in all three subjects, Reading, Writing and Mathematics
(2014–2015 as % Level 4 or better & 2016 % Expected Level or better)

In July 2016, there was a change in the way pupil achievement is measured at the end of KS2. Prior to 2016, pupils received National Curriculum Level grades for English and Maths, with L4 being the expected level at the end of Key Stage 2. In 2016 the measure scaled score and shows whether or not a pupil has achieved the national standard for that subject

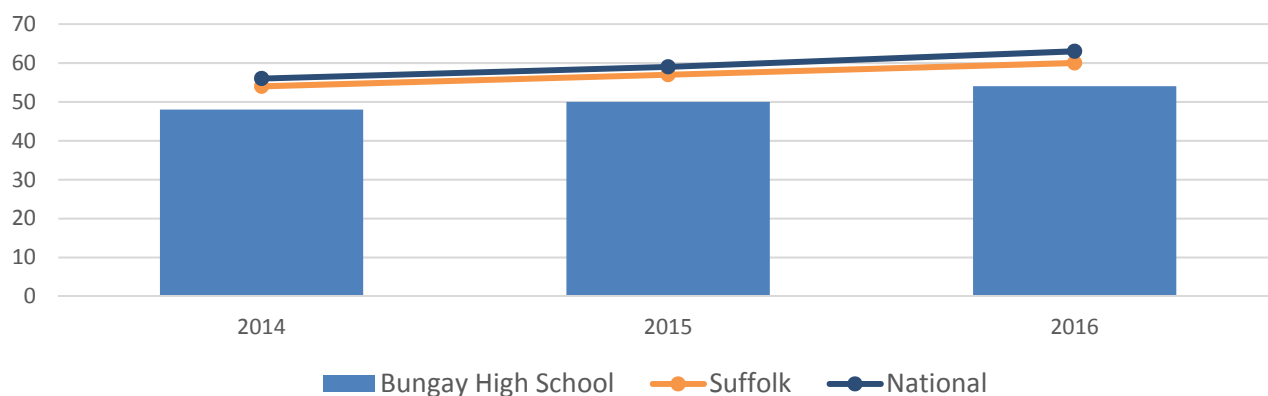


- Key stage 2 attainment in 2016 was significantly above average for all four schools in the division, with a greater percentage of pupils achieving the expected level or better in reading, writing and mathematics
- Bungay Primary (64%), Ilketshall St Lawrence (83%), Ringsfield CEVCP (83%) and St Edmund's Catholic Primary (62%) Schools all exceeded the Suffolk average of 49% and national average of 53%
- Attainment was also good across all schools in 2015 but Ringsfield and St Edmund's Catholic Primary Schools saw lower attainment in 2014

GCSE (Key Stage 4) (age 16)

% pupils achieving five or more GCSEs (or equivalent) at A*-C including English and Mathematics

In July 2016, an additional measure of pupil achievement at Key Stage 4 was introduced but for the purposes of this profile and to demonstrate change over time, we have presented consistent data for the period 2014-2016 using the % pupils achieving five or more GCSEs (or equivalent) at A*-C including English and Mathematics.

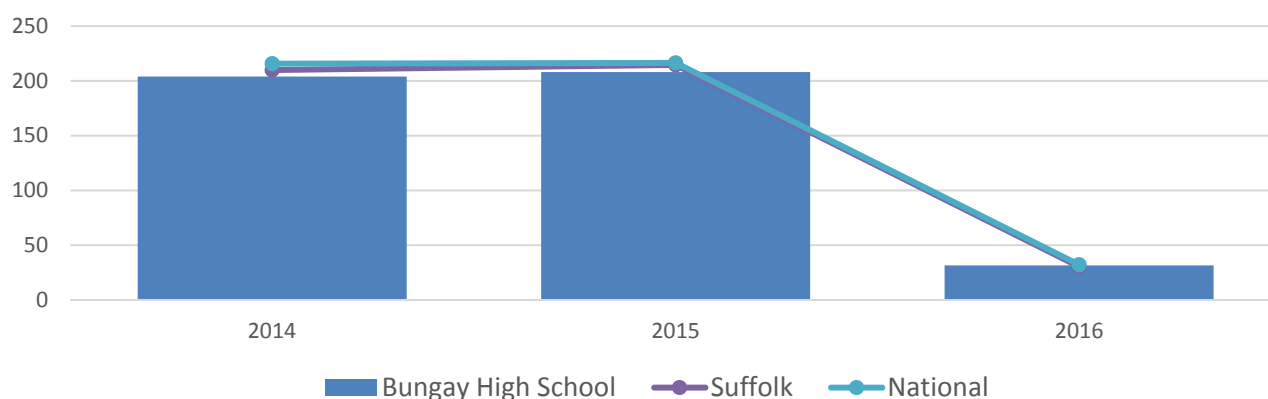


- GCSE attainment at Bungay High school has improved in each of the last three years, following the county and national trend
- Despite this improvement, attainment at the school remains below the county average with 54% of pupils achieving at least 5 A*-C grades including English and Maths in 2016, some way adrift of the national benchmark at 63% and the Suffolk average of 60%

A Level (Key Stage 5) (age 18)

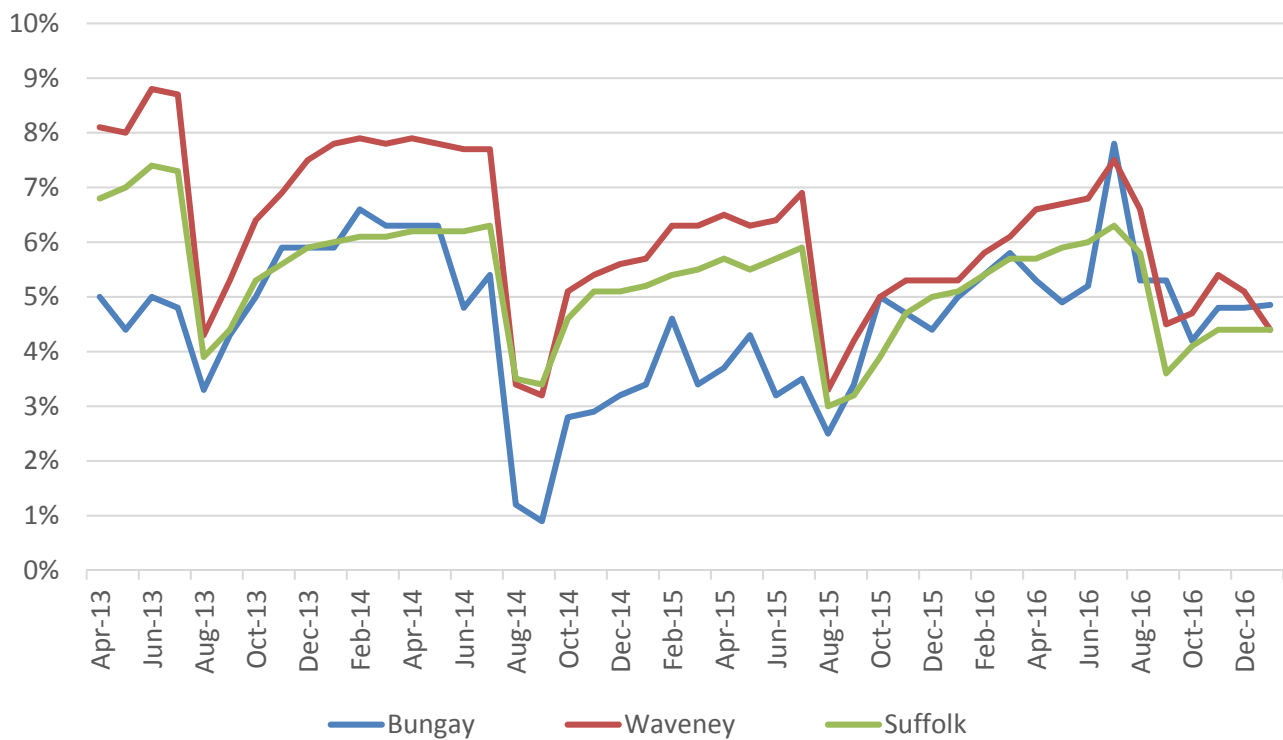
Average point score per student

In 2016 there was a change in the way pupil achievement is measured at the end of KS5 and so the trend over time should not therefore be considered. The relative level of attainment at schools in the Electoral Division versus the Suffolk and National averages can still be seen.



- A level attainment at Bungay High school has seen steady improvement in each of the last three years, narrowing the gap to the national and county averages
- In 2016 the average points score per student was 31.56, just below the national figure of 32.1

NEET % (NOT IN EDUCATION, EMPLOYMENT OR TRAINING)

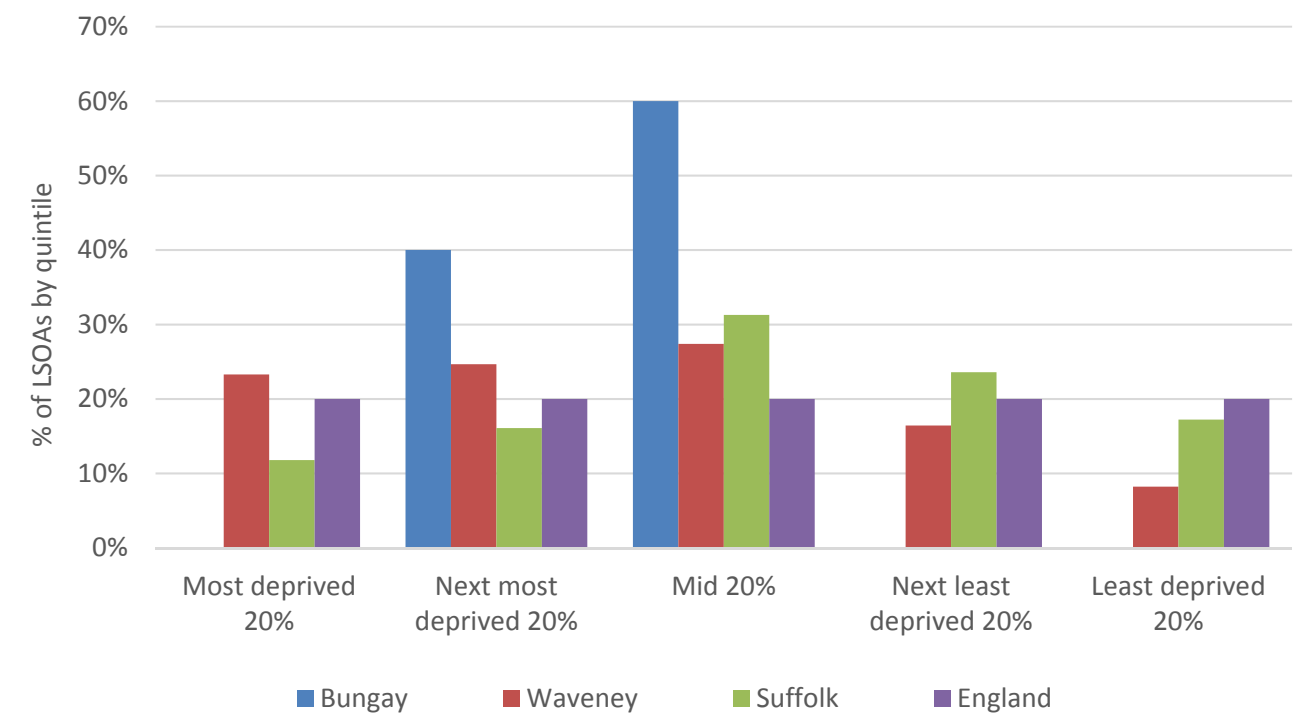


- In January 2017 4.9% of 16-18 year olds in Bungay were classified as NEET (where current activity is known).
- The NEET level in Bungay is currently slightly above the Suffolk and Waveney averages, but historically it tends to be significantly below the district level

INDEX OF MULTIPLE DEPRIVATION (IMD) 2015 (SEE MAP OVERLEAF)

The IMD combines a number of indicators, chosen to cover a range of economic, social and housing issues, into a single deprivation score for each small area in England. This allows each area to be ranked relative to one another according to their level of deprivation. Small areas (Lower Super Output Areas, average population 1,500) are most usually described as being in 1 of 5 quintile bands. The bottom quintile represents the 20% of areas that are the most deprived in the country; these are shaded red on the map. The top quintile represents the least deprived areas in the country, and is shaded green.

The Index is widely used to analyse patterns of deprivation, identify areas that would benefit from special initiatives or programmes and as a tool to determine eligibility for specific funding streams.

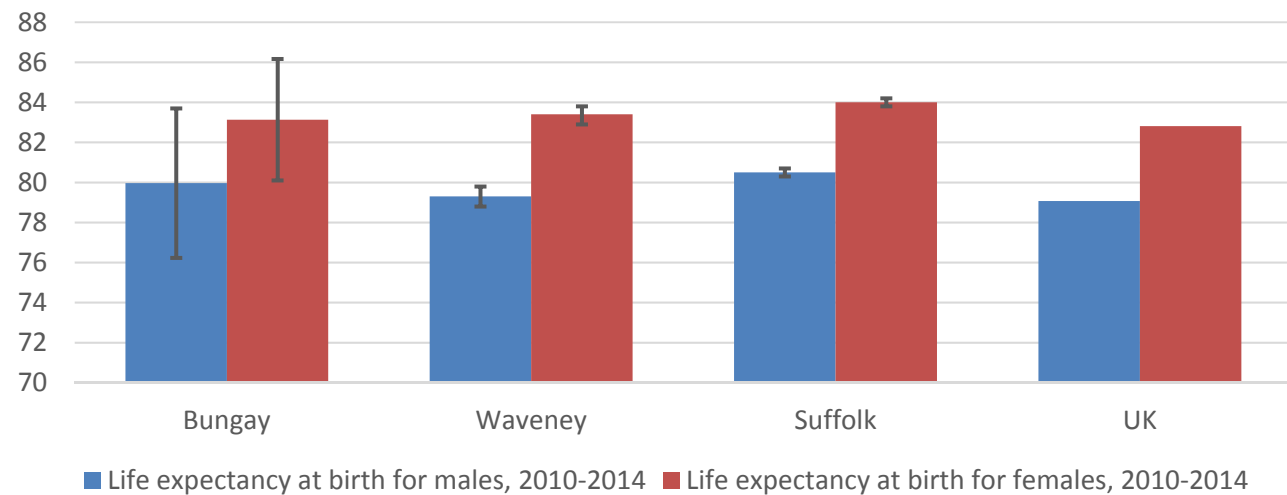


- The IMD 2015 shows that relative deprivation levels in Bungay are moderate to high, with three fifths of the division ranked within the mid 20% nationally
- Of the five Lower Layer Super Output Areas (LSOA) comprising the division, two are ranked in the second least deprived quintile and three are in the mid quintile

HEALTH

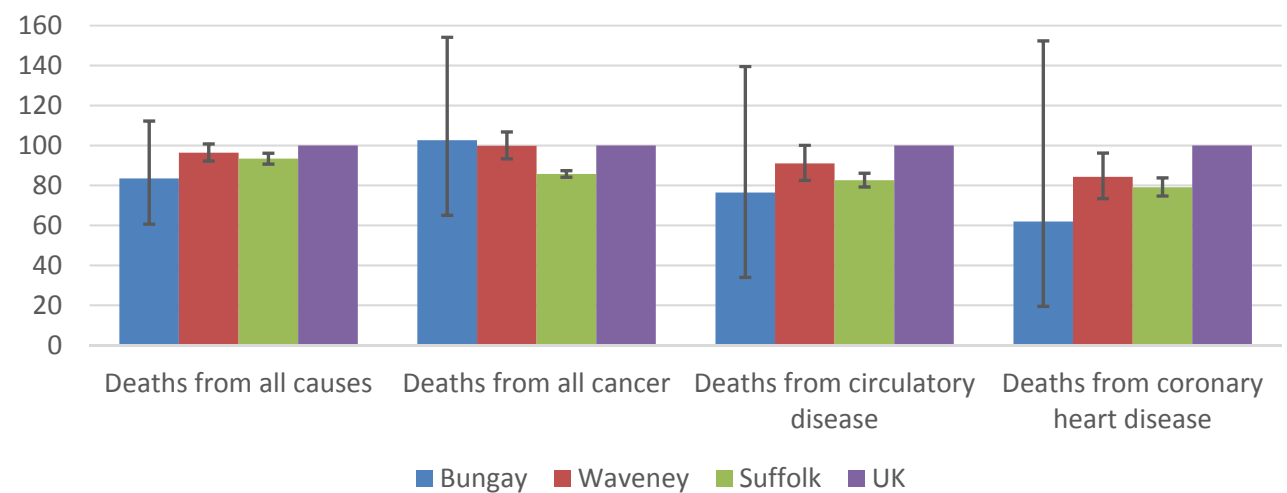
The local data used here is based on relatively small numbers. The confidence limits provide an indication of the reliability of the data. The 95% confidence intervals utilised on the chart provide a range within which there is 95% chance of the true result lying.

LIFE EXPECTANCY AT BIRTH



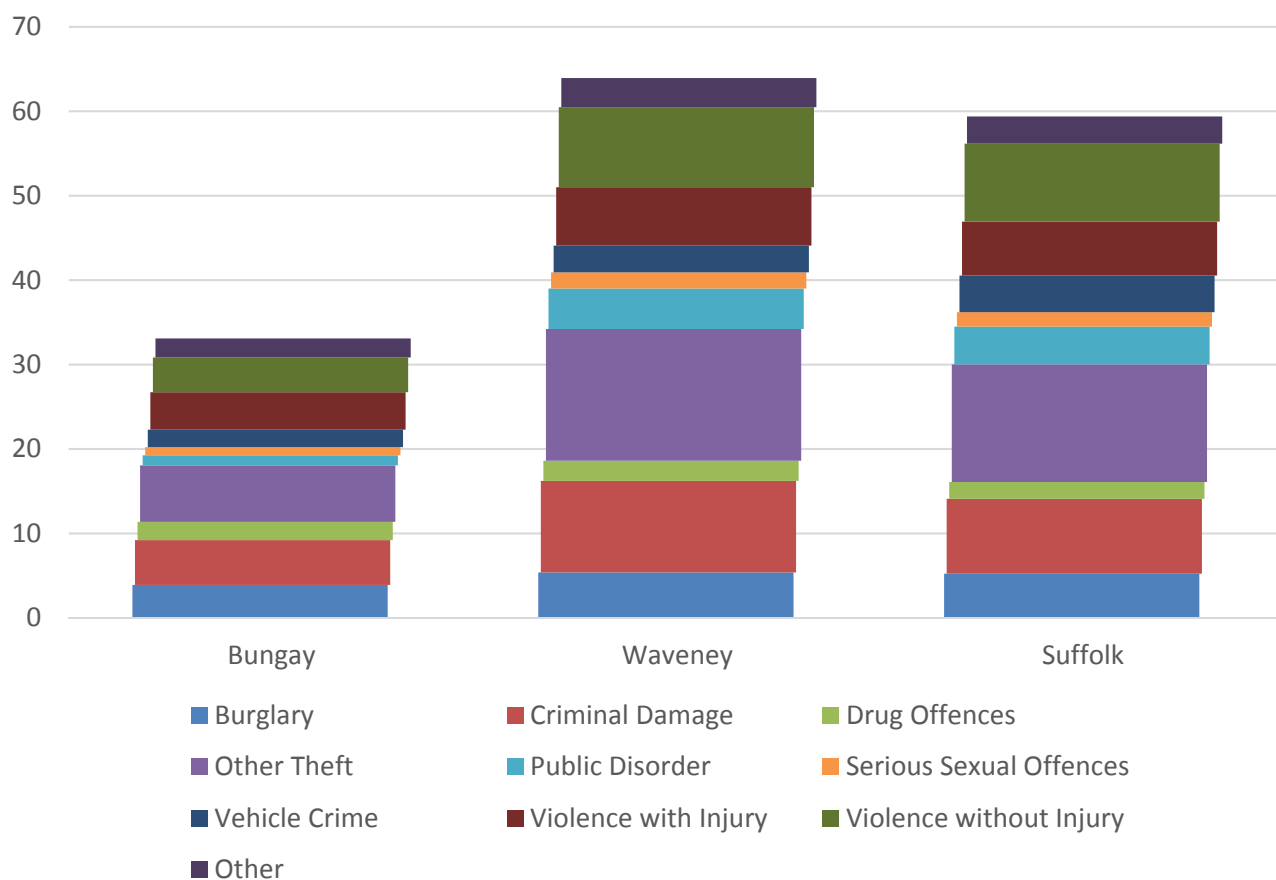
- Life expectancy estimates in Bungay are similar to Waveney, slightly below the Suffolk average and above the UK figure
- For females in the division, the estimated life expectancy figure is 83 years, around one year below the Suffolk average
- Life expectancy for males in Bungay is 80, slightly below the Suffolk average

DEATHS, UNDER 75 YEARS, STANDARDISED MORTALITY RATIO



- The estimated rate of deaths from cancer in Bungay is high, though the rate of deaths from all other causes is relatively low
- The standardised mortality ratio data shown here means that for every 100 early deaths from all causes across the UK as a whole, there are an estimated 83 comparable deaths in Bungay

CRIME & COMMUNITY SAFETY



- Crime levels in Bungay are low. Around 33 crimes per 1,000 residents were recorded in 2015, compared to 64 in Waveney and 59 countywide
- Criminal damage and 'other theft' are the two most commonly committed crimes in the division

ADDITIONAL INFORMATION

Parishes in Division

All Saints and St. Nicholas, South Elmham	St. Andrew, Ilketshall
Barsham	St. Cross, South Elmham
Bungay	St. James, South Elmham
Ellough	St. John, Ilketshall
Flixton	St. Lawrence, Ilketshall
Mettingham	St. Margaret, Ilketshall
Mutford	St. Margaret, South Elmham
Redisham	St. Mary, South Elmham Otherwise Homersfield
Ringsfield	St. Michael, South Elmham
Rumburgh	St. Peter, South Elmham
Shadingfield	Weston
Shipmeadow	Willingham St. Mary
Sotterley	

DATA SOURCES

Category	Indicator	Source
Demographic Profile	Quinary population table 2015	ONS 2015 mid-year population estimates
	Population pyramid 2015	ONS 2015 mid-year population estimates
	Ethnicity 2011	ONS 2011 Census
Economy	Employment by broad industrial sector 2015	ONS Business Register and Employment Survey via NOMIS
Labour market	Job Seekers Allowance Claimant Rate (% 16-64 population) 2014-2017	DWP via NOMIS
Education	School information and attainment 2014-2016	Suffolk County Council
	% 16-18 year olds NEET (Not in Employment, Education or Training) 2013-2017	Suffolk County Council
Deprivation	Index of Multiple Deprivation 2015	Department for Communities and Local Government
Health	Life expectancy at birth 2010-2014	Public Health England
Health	Standardised mortality ratio for deaths from all causes, cancer, circulatory disease and coronary heart disease, aged under 75 2010-2014. The standardised mortality ratio is the ratio of observed deaths in the study group to expected deaths in the general population.	Public Health England
Community Safety	Recorded crime rate per 1,000 resident population 2015	Suffolk Police

For more data and information about Bungay Electoral Division, see the Suffolk Observatory www.suffolkobservatory.info

