

KESGRAVE & RUSHMERE ST ANDREW

ELECTORAL DIVISION PROFILE 2017

This Division comprises Kesgrave East, Kesgrave West and Tower wards in their entirety plus part of Fynn Valley ward

www.suffolkobservatory.info



CONTENTS

- Demographic Profile: Age & Ethnicity
- Economy and Labour Market
- Schools & NEET
- Index of Multiple Deprivation
- Health
- Crime & Community Safety
- Additional Information
- Data Sources

ELECTORAL DIVISION PROFILES: AN INTRODUCTION

These profiles have been produced to support elected members, constituents and other interested parties in understanding the demographic, economic, social and educational profile of their neighbourhoods. We have used the latest data available at the time of publication.

Much more data is available from national and local sources than is captured here, but it is hoped that the profile will be a useful starting point for discussion, where local knowledge and experience can be used to flesh out and illuminate the information presented here.

The profile can be used to help look at some fundamental questions e.g.

- Does the age profile of the population match or differ from the national profile?
- Is there evidence of the ageing profile of the county in all the wards in the Division or just some?
- How diverse is the community in terms of ethnicity?
- What is the impact of deprivation on families and residents?
- Does there seem to be a link between deprivation and school performance?
- What is the breakdown of employment sectors in the area?
- Is it a relatively healthy area compared to the rest of the district or county?
- What sort of crime is prevalent in the community?

A vast amount of additional data is available on the **Suffolk Observatory**

www.suffolkobservatory.info

The Suffolk Observatory is a free online resource that contains all Suffolk's vital statistics; it is the one-stop-shop for information and intelligence about Suffolk. Through data, reports and profiles, the Suffolk Observatory provides a comprehensive picture of the County. It is a great source for useful facts and figures that can be used for writing reports and presentations, informing strategic and business planning, preparing funding applications or supporting academic research. Data is presented around the key themes of education and skills, economy and employment, health and care, population, deprivation, housing, environment, transport and travel and crime. All areas of the county are covered, right down to district, ward and parish level, with information easily accessible in a variety of formats. You can also build your own reports by different themes and topics.

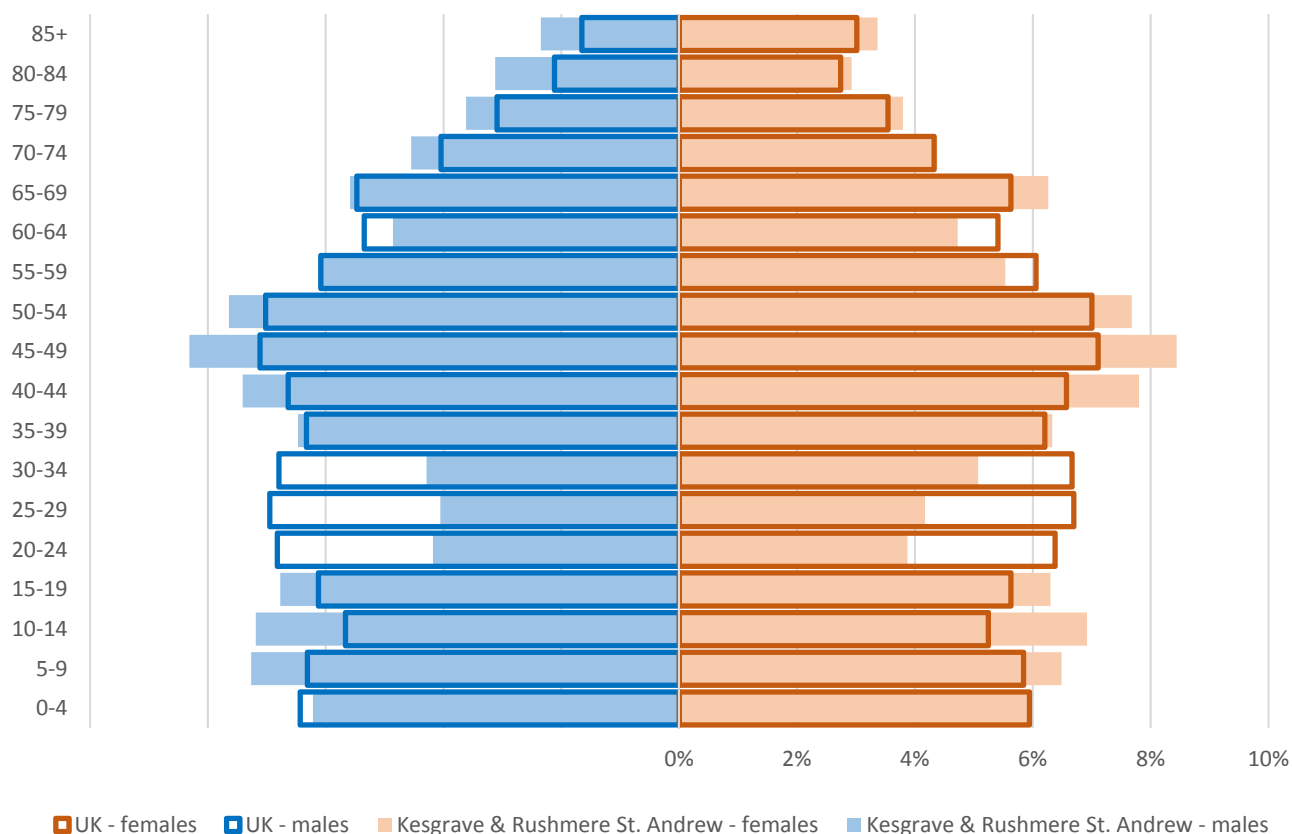
Technical Notes:

1. Where Electoral Divisions do not exactly match ward boundaries, we have adopted a "best fit" approach to produce a dataset.
2. District, county and national level data is provided where possible to provide a context for comparisons.

DEMOGRAPHIC PROFILE - AGE

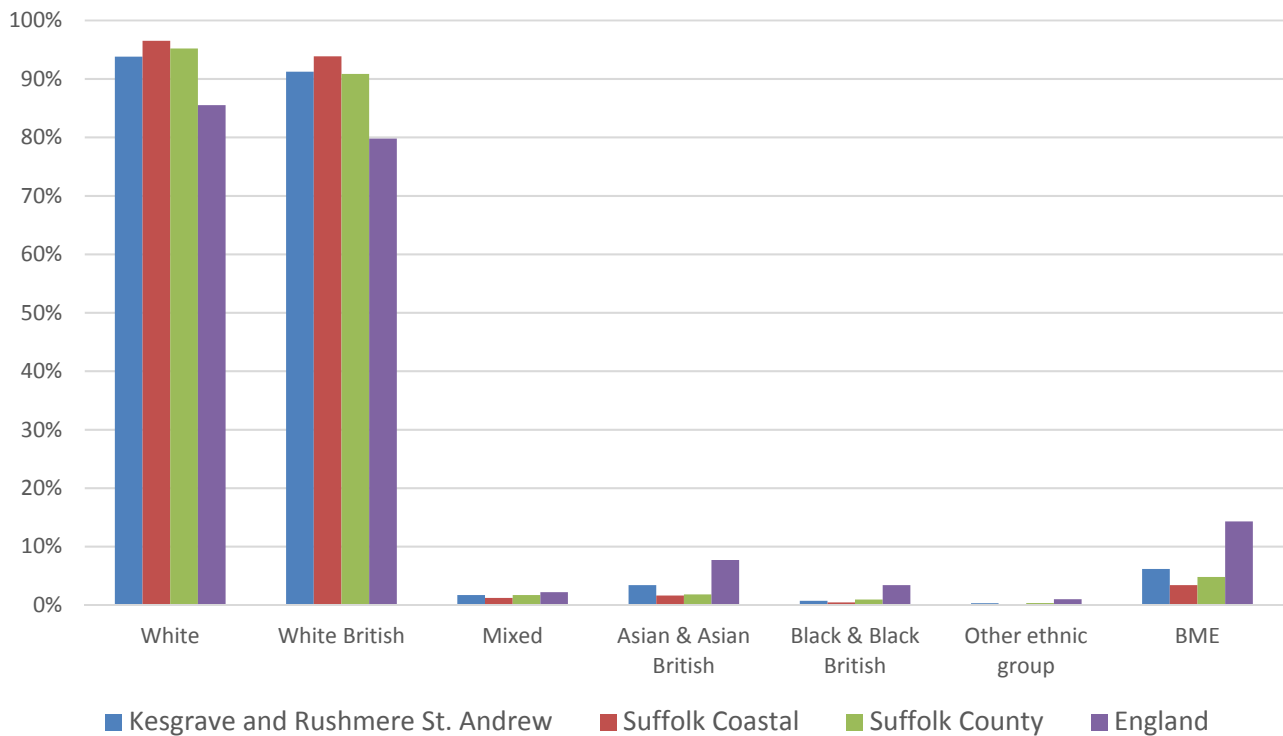
In mid-2015, the population of Kesgrave and Rushmere St Andrew stood at 20,973, an increase of 1.9% since the 2011 Census. The age structure of the component wards and the division as a whole is set out below. *This ward is not entirely within the division boundary, hence the figures do not sum.

	Kesgrave and Rushmere St. Andrew Division	Fynn Valley*	Kesgrave East	Kesgrave West	Tower
All Ages	20,973	3,187	8,232	6,580	4,932
0-4	1,271	112	593	389	247
5-9	1,441	147	710	413	268
10-14	1,479	147	673	458	296
15-19	1,370	180	578	392	315
20-24	844	114	336	266	194
25-29	863	96	417	256	150
30-34	983	86	498	287	166
35-39	1,342	125	672	388	239
40-44	1,596	219	741	490	292
45-49	1,757	210	714	495	460
50-54	1,607	278	604	443	468
55-59	1,222	267	419	381	329
60-64	1,005	225	286	354	309
65-69	1,244	312	340	400	364
70-74	936	237	218	350	271
75-79	778	187	170	325	204
80-84	634	133	125	239	211
85+	601	112	138	254	149



- The age pyramid for Kesgrave and Rushmere St Andrew has a lower proportion of younger working age people (20-34 age band) than the average for England
- The most common age group in Kesgrave and Rushmere St Andrew is 45-49 year olds, followed by 50-54 year olds
- Kesgrave and Rushmere St Andrew has a greater proportion of children (5-19 year olds) than the national average

ETHNICITY

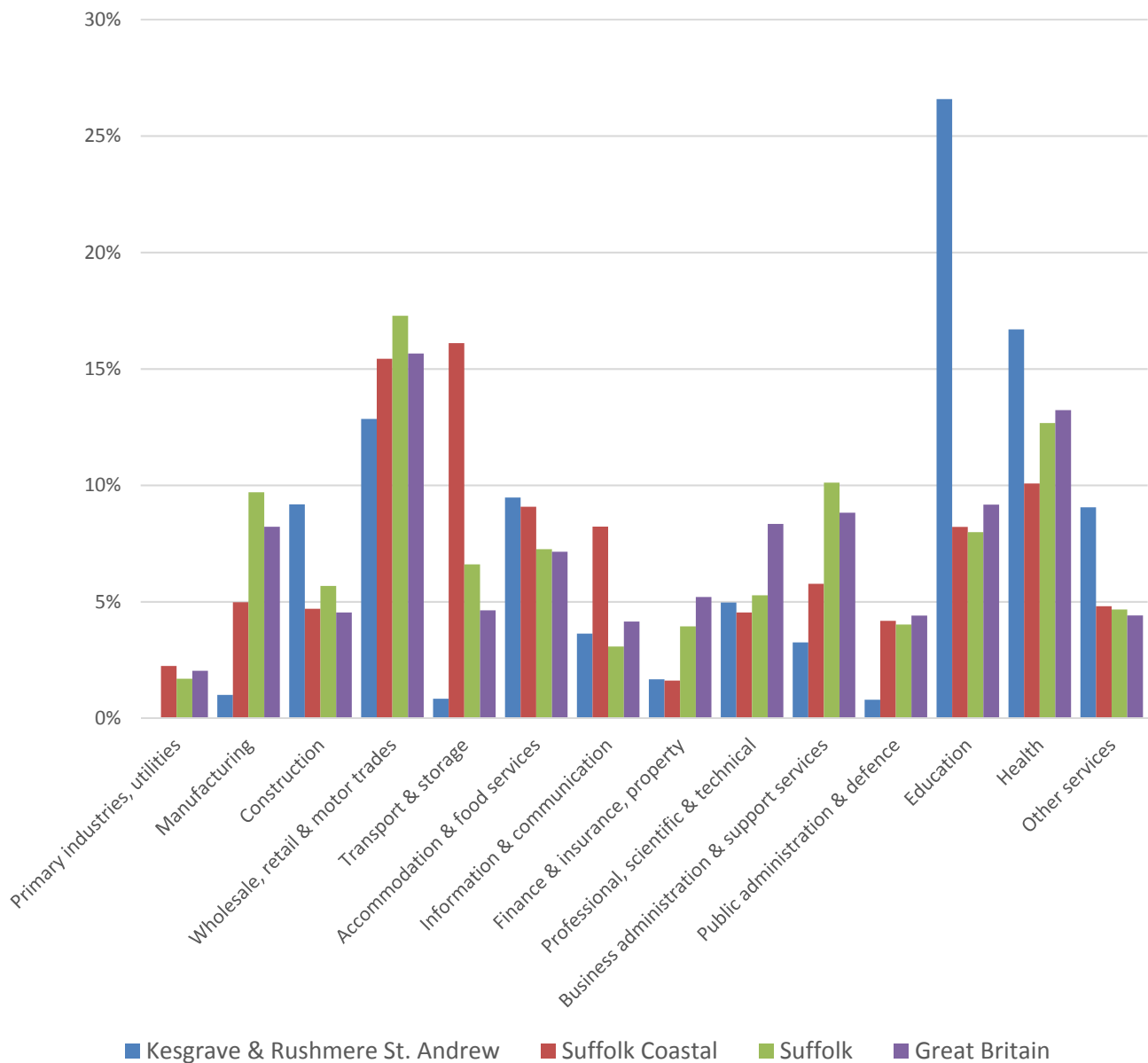


- According to the latest data (2011 Census), 93.8% (19,314) of the population of Kesgrave and Rushmere St Andrew are white
- There are 1,273 (6.2%) people of black or minority ethnic origin in the division, more than double the number at the time of the 2001 Census
- There are 705 (3.4%) people of Asian and Asian British in the division, three times the number at the time of the 2001 Census

	All people	White		White British		Mixed		Asian and Asian British		Black and Black British		Other Ethnic Group		Black or Minority Ethnic Total	
	Count	Count	%	Count	%	Count	%	Count	%	Count	%	Count	%	Count	%
Kesgrave and Rushmere St. Andrew	20,587	19,314	93.8	18,779	91.2	351	1.7	705	3.4	150	0.7	67	0.3	1,273	6.2
Suffolk Coastal	124,298	119,976	96.5	116,655	93.9	1,513	1.2	2,032	1.6	556	0.4	221	0.2	4,322	3.5
Suffolk	728,163	693,195	95.2	661,458	90.8	12,472	1.7	13,131	1.8	6,854	0.9	2,511	0.3	34,968	4.8
England & Wales			86.0		80.5		2.2		6.7		2.8		0.4		12.1

ECONOMY

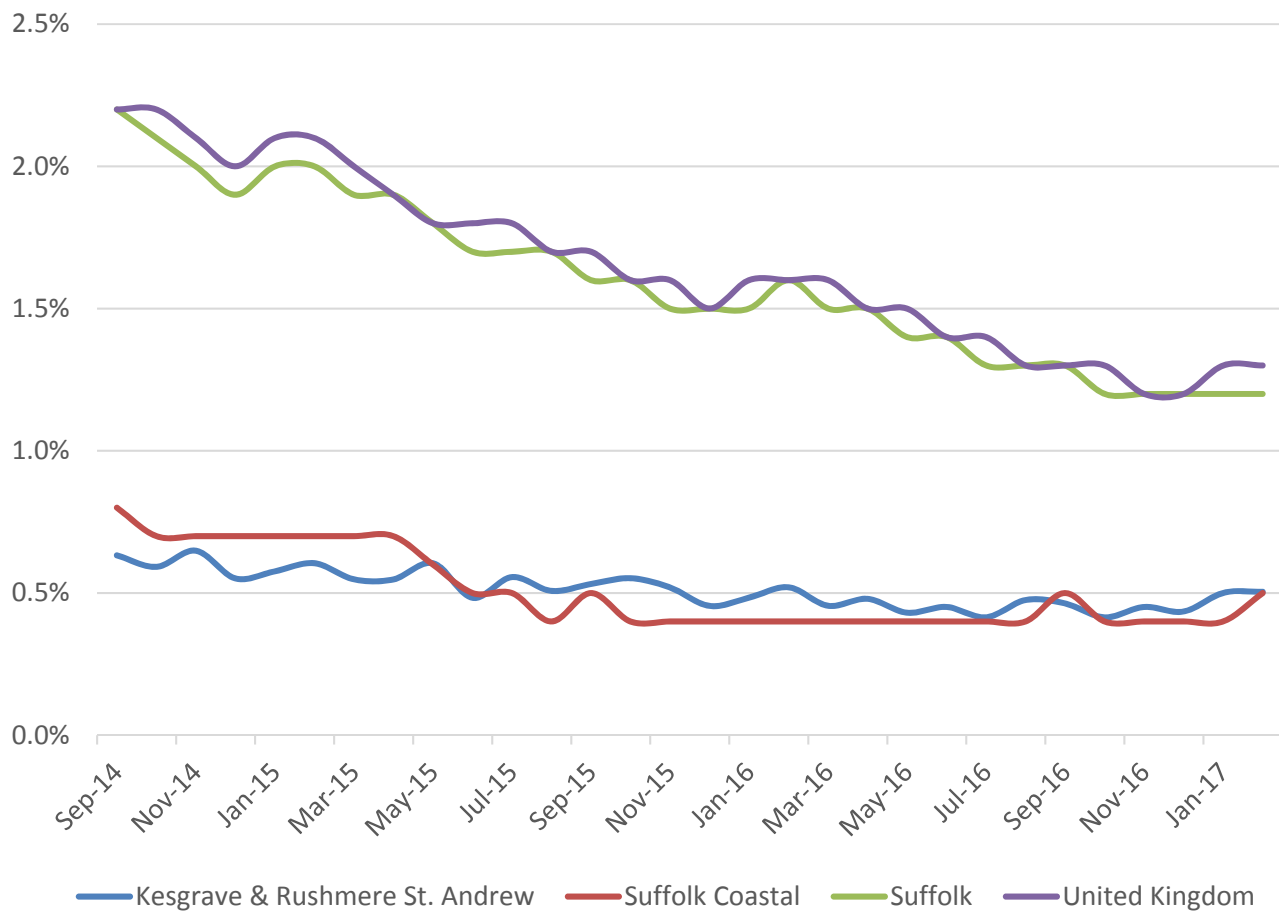
There are 2,500 people employed in Kesgrave and Rushmere St Andrew.



- The key employment sectors in Kesgrave and Rushmere St Andrew are education, health, the wholesale, retail and motor trades, construction, accommodation and food services and other services
- Over one quarter of people employed in the division are employed in education and around 17% of people in health
- Education, health and other services are also significant in that the level of employment in these sectors in the division is considerably higher than the district, county and national levels

LABOUR MARKET

JOB SEEKERS ALLOWANCE CLAIMANT RATE



- Kesgrave and Rushmere St Andrew has had low and stable levels of Job Seekers Allowance claimants over the past three years, compared to national and county figures
- In percentage terms, 0.5% of the working age population (aged 16-64) are claiming JSA. This is the same as the district level and well below the county and national average

SCHOOLS

SCHOOL INFORMATION

Schools in the Division

Name	Phase	Average cohort size at:				Latest Ofsted	Latest Ofsted Date
		Foundation Stage (age 5)	KS2 (age 11)	KS4 (age 16)	KS5 (age 18)		
Broke Hall CP School	Primary	86	86			Good	18/06/2014
Heath Primary School	Primary	81	70			Good	11/03/2014
Cedarwood CP School	Primary	59	69			Good	07/03/2017
Gorseland Primary School	Primary	60	64			Good	16/05/2013
Kesgrave High School	Upper		24	281	161	Good	11/09/2013

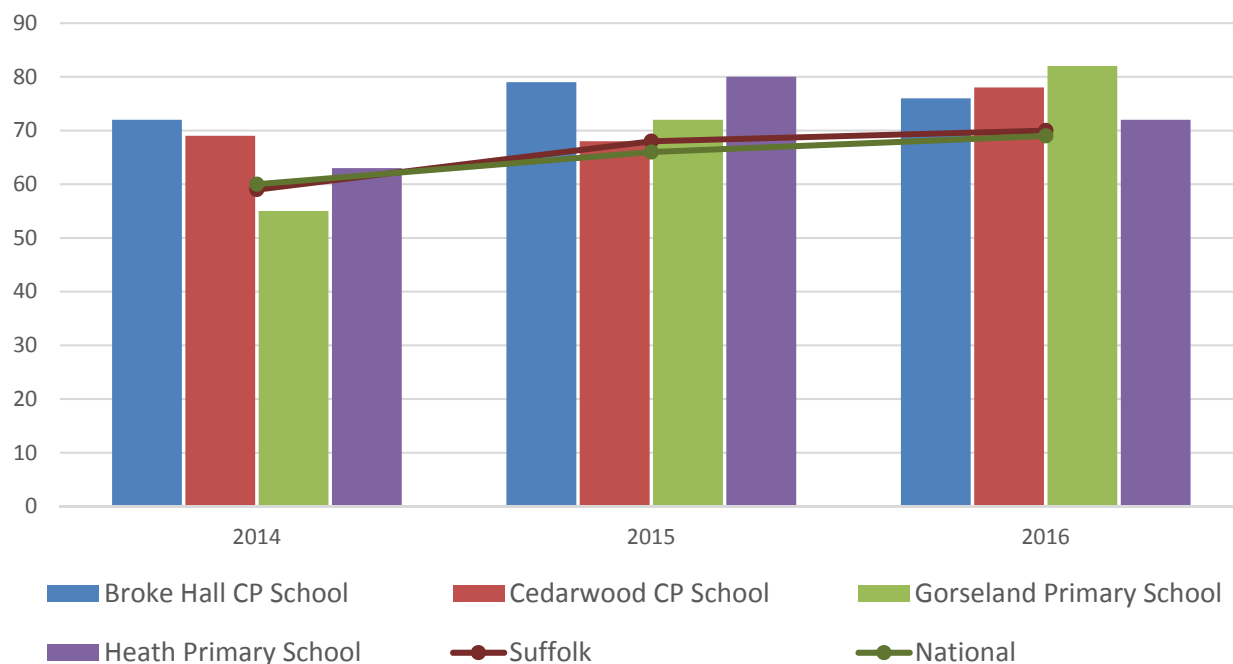
School Catchment overlaps with the Division

Name	Phase	Average cohort size at:				Latest Ofsted	Latest Ofsted Date
		Foundation Stage (age 5)	KS2 (age 11)	KS4 (age 16)	KS5 (age 18)		
Rushmere Hall Primary School	Primary	80	60			Requires Improvement	03/06/2015
Copleston High School	Upper			292	120	Good	24/04/2013
Northgate High School	Upper		2	222	259	Good	15/12/2015

SCHOOL ATTAINMENT

Foundation Stage Profile (reception)

% pupils achieving Good Level of Development (GLD)

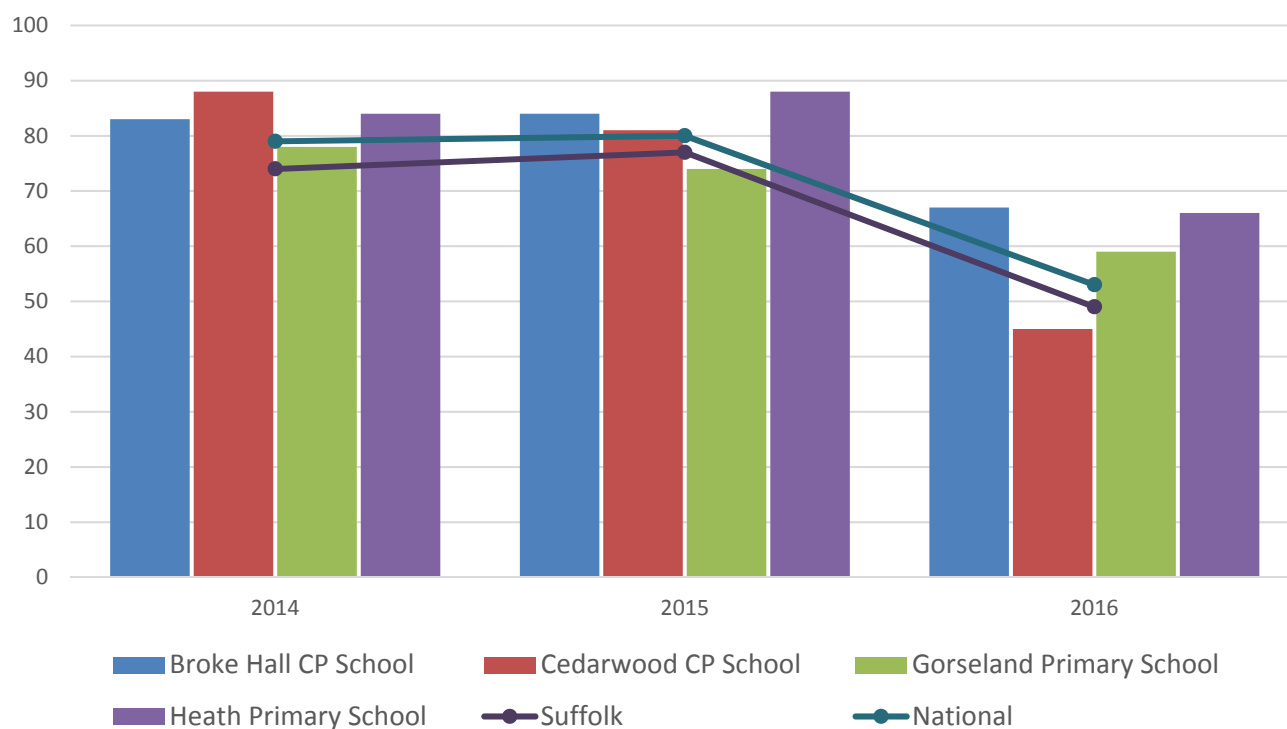


- Foundation Stage attainment across all four schools in Kesgrave and Rushmere St Andrew division has been above the national average for the past two years (2015 and 2016)
- Attainment at Broke Hall and Cedarwood has been above the county and national averages for all three years

Key Stage 2 (age 11)

Pupil Achievement in all three subjects, Reading, Writing and Mathematics
(2014–2015 as % Level 4 or better & 2016 % Expected Level or better)

In July 2016, there was a change in the way pupil achievement is measured at the end of KS2. Prior to 2016, pupils received National Curriculum Level grades for English and Maths, with L4 being the expected level at the end of Key Stage 2. In 2016 the measure scaled score and shows whether or not a pupil has achieved the national standard for that subject

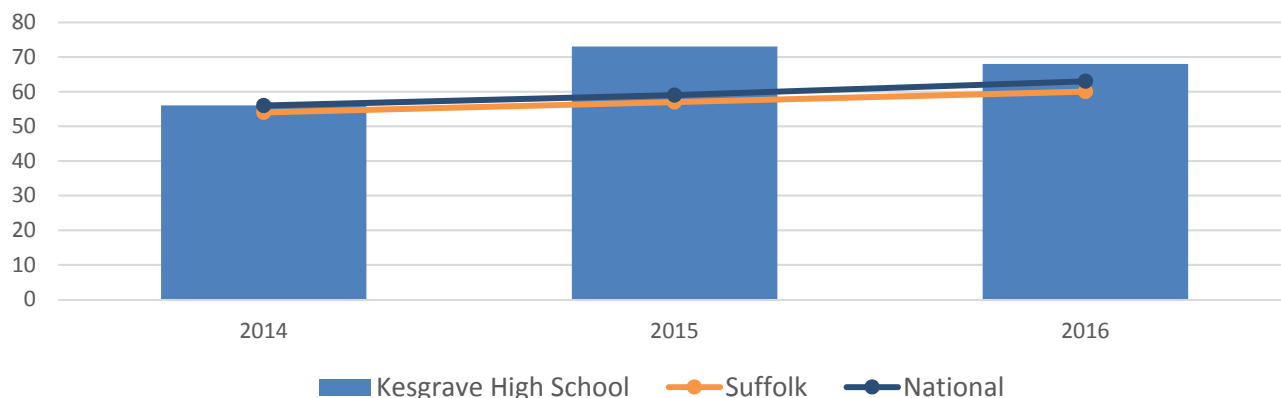


- Key stage 2 attainment at schools in Kesgrave and Rushmere St Andrew is generally strong, with most schools achieving results similar to or above the national average across the past three years of data
- Broke Hall and Heath Primary schools have performed consistently above the county and national average from 2014 to 2016, despite the change in measure in the most recent academic year
- Gorseland also saw above average attainment in 2016, with 59% of pupils achieving the expected level or better in reading, writing and mathematics
- Cedarwood CP school saw high attainment levels in 2014 and 2015 but dipped below the county and national average in 2016 with the introduction of the new achievement measure

GCSE (Key Stage 4) (age 16)

% pupils achieving 5 A*-C in English and Maths

In July 2016, an additional measure of pupil achievement at Key Stage 4 was introduced but for the purposes of this profile and to demonstrate change over time, we have presented consistent data for the period 2014-2016 using the % pupils achieving five or more GCSEs (or equivalent) at A*-C including English and Mathematics

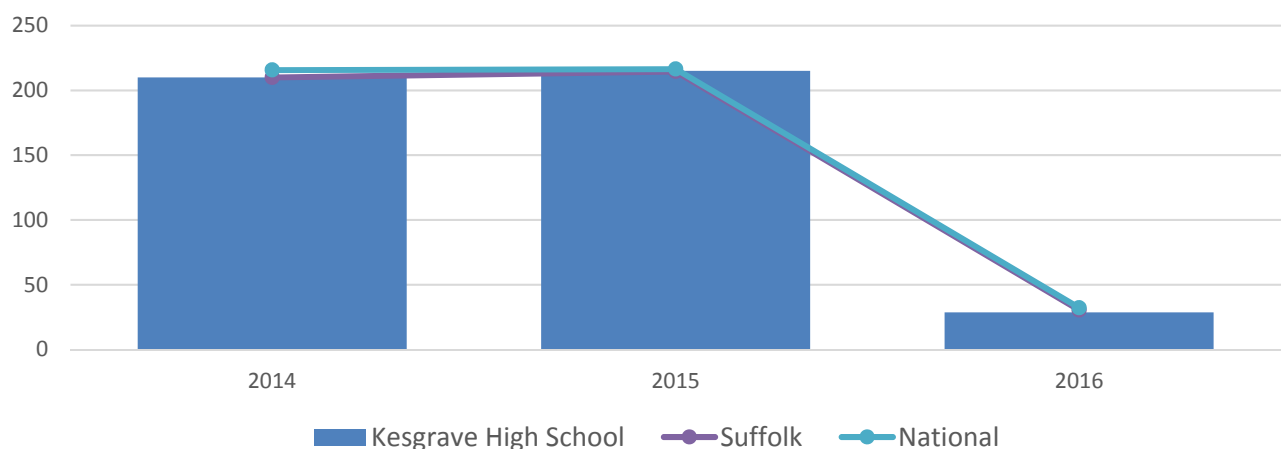


- GCSE attainment at Kesgrave High School has been at or above the county and national averages for each of the last three years
- Attainment has fluctuated somewhat over the three-year period, with the attainment figure in 2016 marginally higher than in 2014 but below the 2015 level

A Level (Key Stage 5) (age 18)

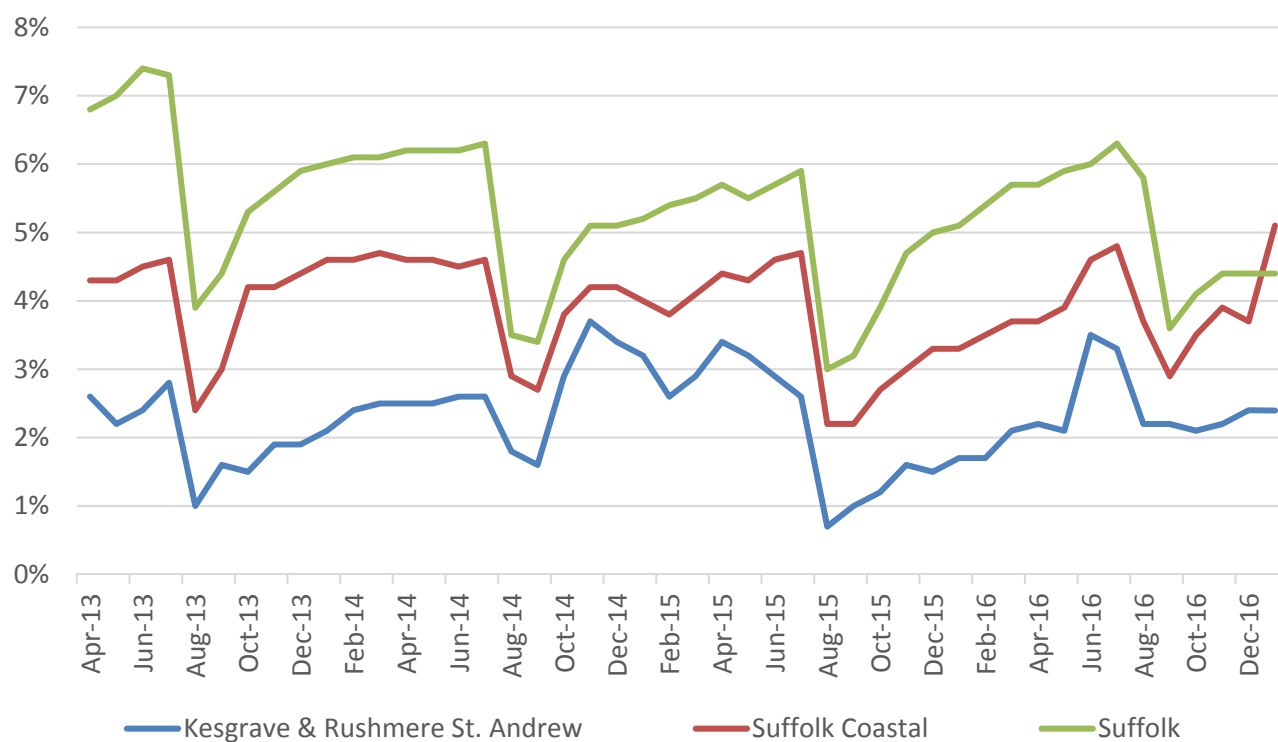
Average point score per student

In 2016 there was a change in the way pupil achievement is measured at the end of KS5 and so the trend over time should not therefore be considered. The relative level of attainment at schools in the Electoral Division versus the Suffolk and National averages can still be seen.



- A level attainment at Kesgrave High School has been consistently just below the national average in each of the past three years

NEET % (NOT IN EDUCATION, EMPLOYMENT OR TRAINING)

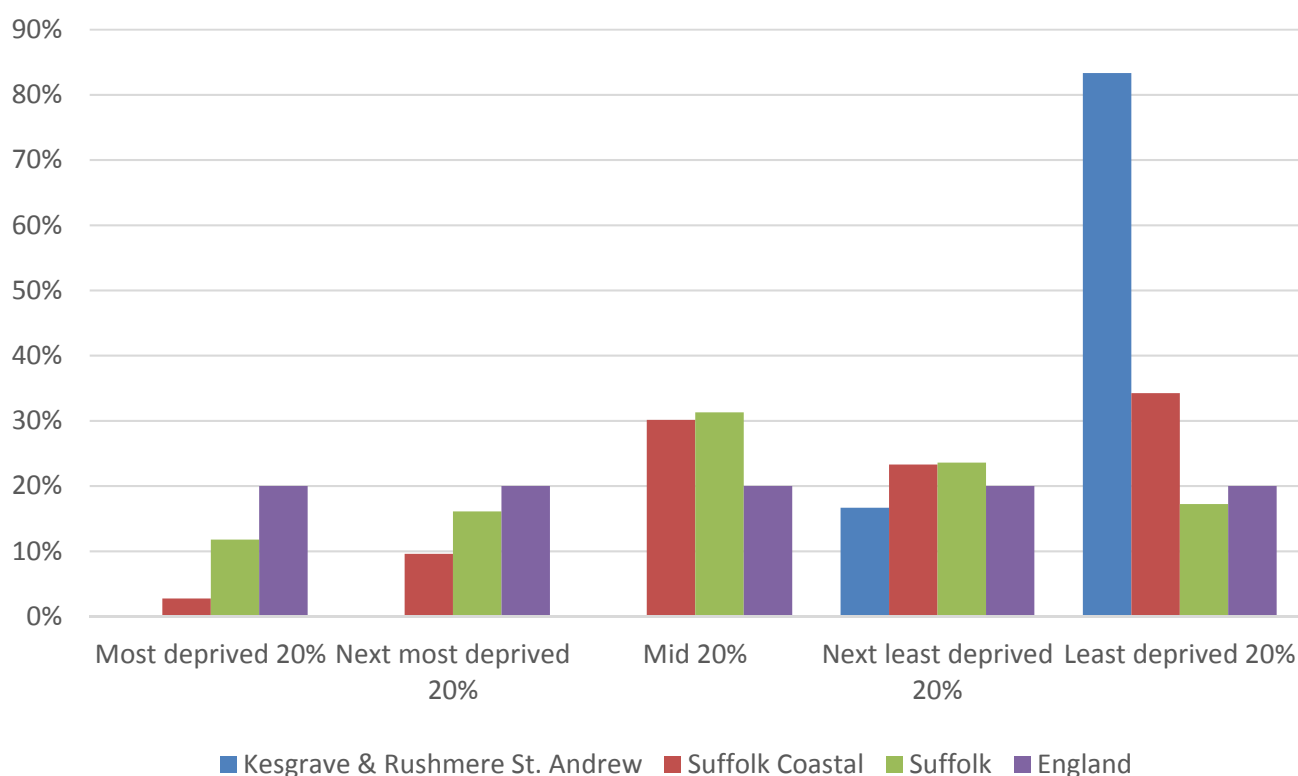


- In January 2017, 2.4% of the 16-18 age group were classified as NEET (where current activity is known)
- NEET levels in the division follow seasonal variations but remain consistently well below the district and county averages

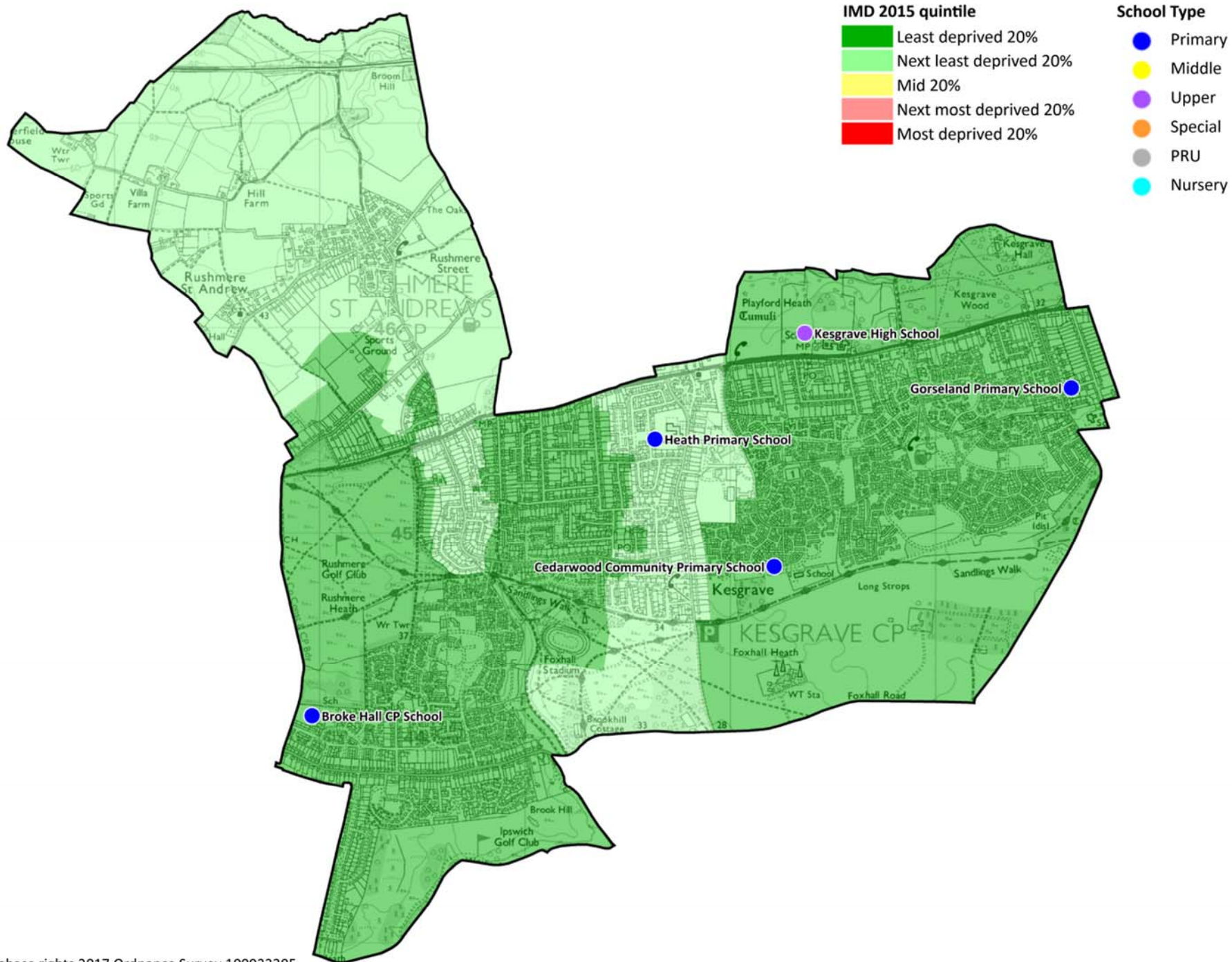
INDEX OF MULTIPLE DEPRIVATION (IMD) 2015 (SEE MAP OVERLEAF)

The IMD combines a number of indicators, chosen to cover a range of economic, social and housing issues, into a single deprivation score for each small area in England. This allows each area to be ranked relative to one another according to their level of deprivation. Small areas (Lower Super Output Areas, average population 1,500) are most usually described as being in 1 of 5 quintile bands. The bottom quintile represents the 20% of areas that are the most deprived in the country; these are shaded red on the map. The top quintile represents the least deprived areas in the country, and is shaded green.

The Index is widely used to analyse patterns of deprivation, identify areas that would benefit from special initiatives or programmes and as a tool to determine eligibility for specific funding streams.



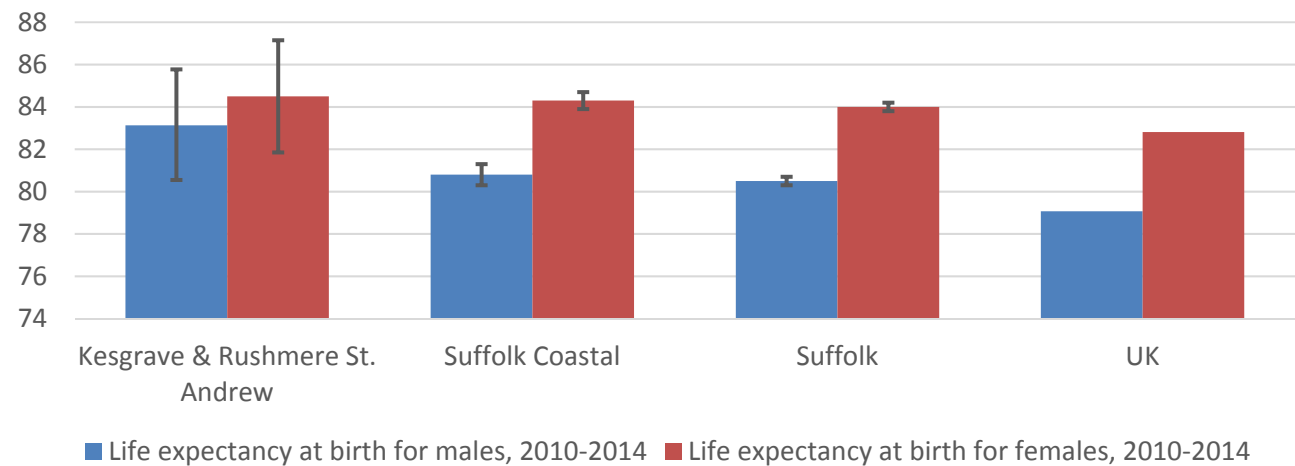
- The IMD 2015 shows that relative deprivation levels in Kesgrave and Rushmere St Andrew are well below district, county and national averages with more than 80% of the division in the least deprived quintile.
- Ten of the twelve Lower Super Output Areas (LSOAs) which comprise the division are in the least deprived quintile
- The remaining two areas are in the next least deprived quintile



HEALTH

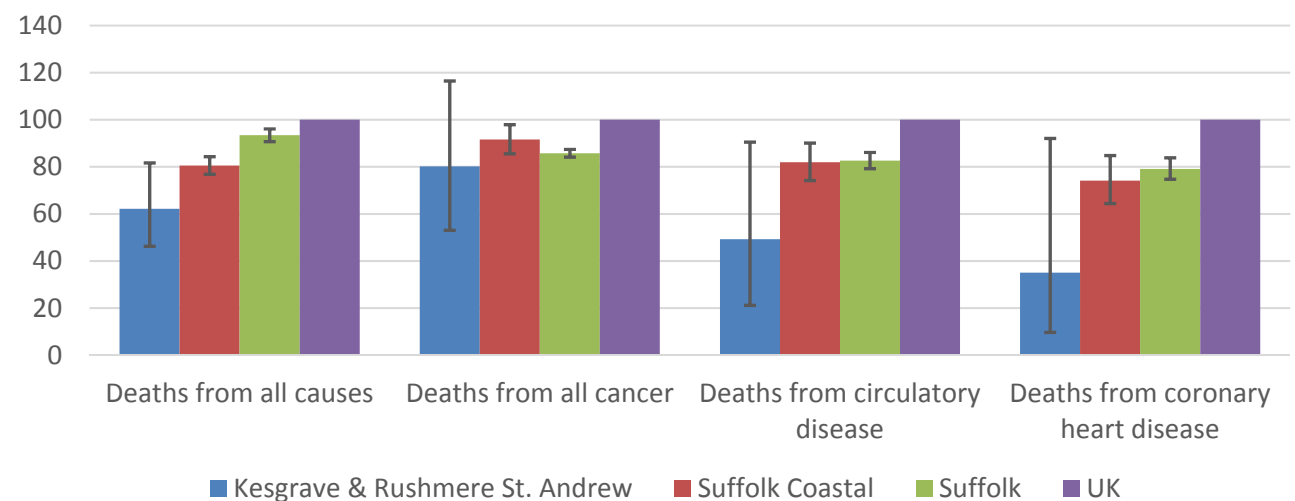
The local data used here is based on relatively small numbers of deaths. The confidence limits provide an indication of the reliability of the data. The 95% confidence intervals utilised on the chart provide a range within which there is 95% chance of the true result lying.

LIFE EXPECTANCY AT BIRTH



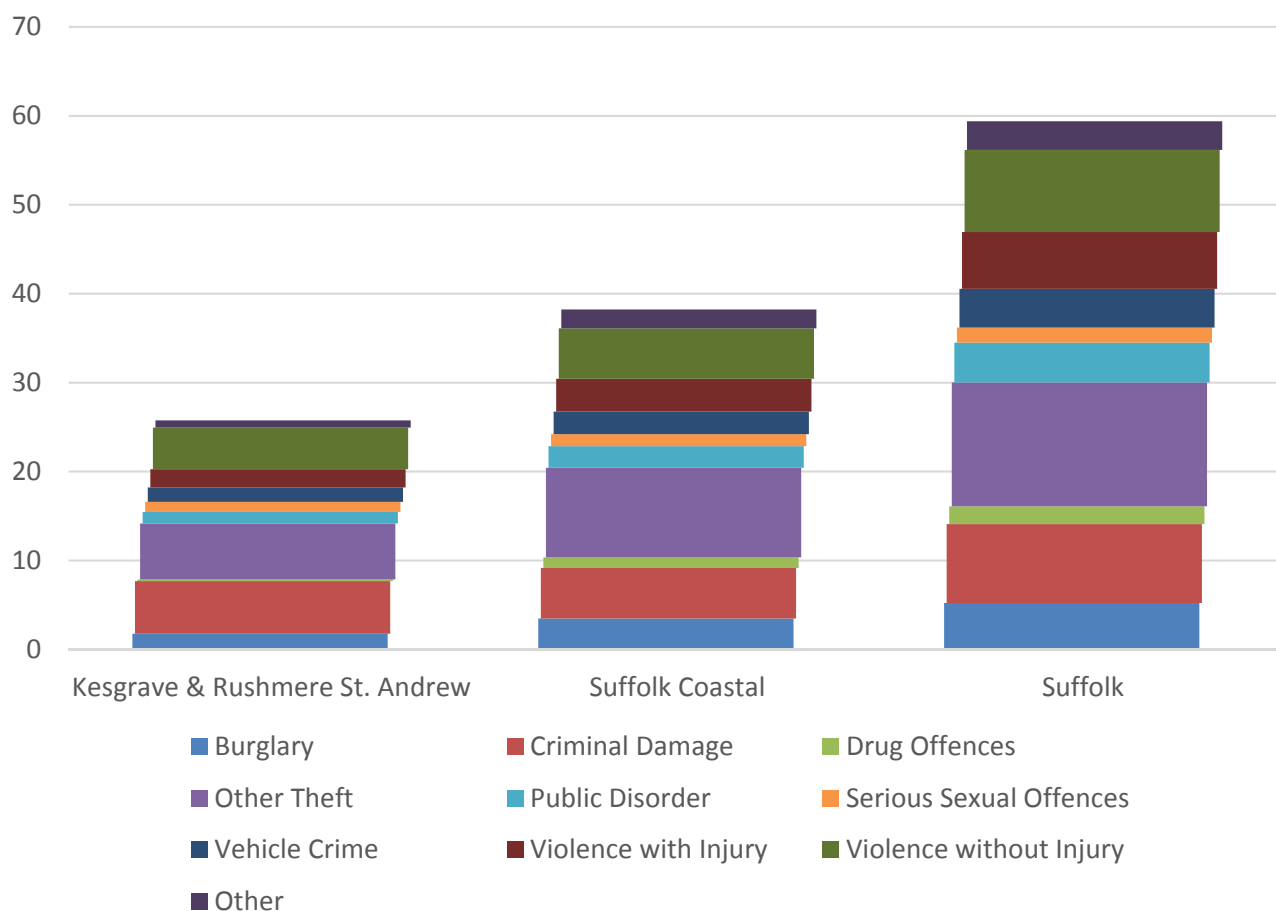
- Estimates for life expectancy at birth in Kesgrave and Rushmere St Andrew show above average figures for both males and females
- Average life expectancy for males in the division is 82.4 years and 85.6 years for women, above the level seen in Suffolk Coastal district, Suffolk county and the UK as a whole

DEATHS, UNDER 75 YEARS, STANDARDISED MORTALITY RATIO



- Estimated early death rates from all causes assessed here are lower in Kesgrave and Rushmere St Andrew than the district, county and national average
- The standardised mortality ratio data shown here means that for every 100 early deaths from all causes across the UK as a whole, there are an estimated 62 comparable deaths in Kesgrave and Rushmere St Andrew

CRIME & COMMUNITY SAFETY



- Crime rates in Kesgrave and Rushmere St Andrew are well below the district and county levels
- In 2015, there were just under 26 recorded crimes per 1,000 residents in Kesgrave and Rushmere St Andrew compared to 38 in Suffolk Coastal and 59 across the county as a whole
- “Other theft” is the most common form of criminal activity in the division, as it is for Suffolk Coastal and the county as a whole

ADDITIONAL INFORMATION

Parishes in Division

Kesgrave
Martlesham
Rushmere St. Andrew

DATA SOURCES

Category	Indicator	Source
Demographic Profile	Quinary population table 2015	ONS 2015 mid-year population estimates
	Population pyramid 2015	ONS 2015 mid-year population estimates
	Ethnicity 2011	ONS 2011 Census
Economy	Employment by broad industrial sector 2015	ONS Business Register and Employment Survey via NOMIS
Labour market	Job Seekers Allowance Claimant Rate (% 16-64 population) 2014-2017	DWP via NOMIS
Education	School information and attainment 2014-2016	Suffolk County Council
	% 16-18 year olds NEET (Not in Employment, Education or Training) 2013-2017	Suffolk County Council
Deprivation	Index of Multiple Deprivation 2015	Department for Communities and Local Government
Health	Life expectancy at birth 2010-2014	Public Health England
Health	Standardised mortality ratio for deaths from all causes, cancer, circulatory disease and coronary heart disease, aged under 75 2010-2014. The standardised mortality ratio is the ratio of observed deaths in the study group to expected deaths in the general population.	Public Health England
Community Safety	Recorded crime rate per 1,000 resident population 2015	Suffolk Police

For more data and information about Kesgrave and Rushmere St Andrew Electoral Division, see the Suffolk Observatory www.suffolkobservatory.info

