

# THINGOE SOUTH

## ELECTORAL DIVISION PROFILE 2017

This Division comprises Barrow, Chedburgh, Horringer and Whelnetham and Rougham wards

[www.suffolkobservatory.info](http://www.suffolkobservatory.info)



## **CONTENTS**

- Demographic Profile: Age & Ethnicity
- Economy and Labour Market
- Schools & NEET
- Index of Multiple Deprivation
- Health
- Crime & Community Safety
- Additional Information
- Data Sources

## ELECTORAL DIVISION PROFILES: AN INTRODUCTION

These profiles have been produced to support elected members, constituents and other interested parties in understanding the demographic, economic, social and educational profile of their neighbourhoods. We have used the latest data available at the time of publication.

Much more data is available from national and local sources than is captured here, but it is hoped that the profile will be a useful starting point for discussion, where local knowledge and experience can be used to flesh out and illuminate the information presented here.

The profile can be used to help look at some fundamental questions e.g.

- Does the age profile of the population match or differ from the national profile?
- Is there evidence of the ageing profile of the county in all the wards in the Division or just some?
- How diverse is the community in terms of ethnicity?
- What is the impact of deprivation on families and residents?
- Does there seem to be a link between deprivation and school performance?
- What is the breakdown of employment sectors in the area?
- Is it a relatively healthy area compared to the rest of the district or county?
- What sort of crime is prevalent in the community?

A vast amount of additional data is available on the **Suffolk Observatory**

[www.suffolkobservatory.info](http://www.suffolkobservatory.info)

The Suffolk Observatory is a free online resource that contains all Suffolk's vital statistics; it is the one-stop-shop for information and intelligence about Suffolk. Through data, reports and profiles, the Suffolk Observatory provides a comprehensive picture of the County. It is a great source for useful facts and figures that can be used for writing reports and presentations, informing strategic and business planning, preparing funding applications or supporting academic research. Data is presented around the key themes of education and skills, economy and employment, health and care, population, deprivation, housing, environment, transport and travel and crime. All areas of the county are covered, right down to district, ward and parish level, with information easily accessible in a variety of formats. You can also build your own reports by different themes and topics.

### Technical Notes:

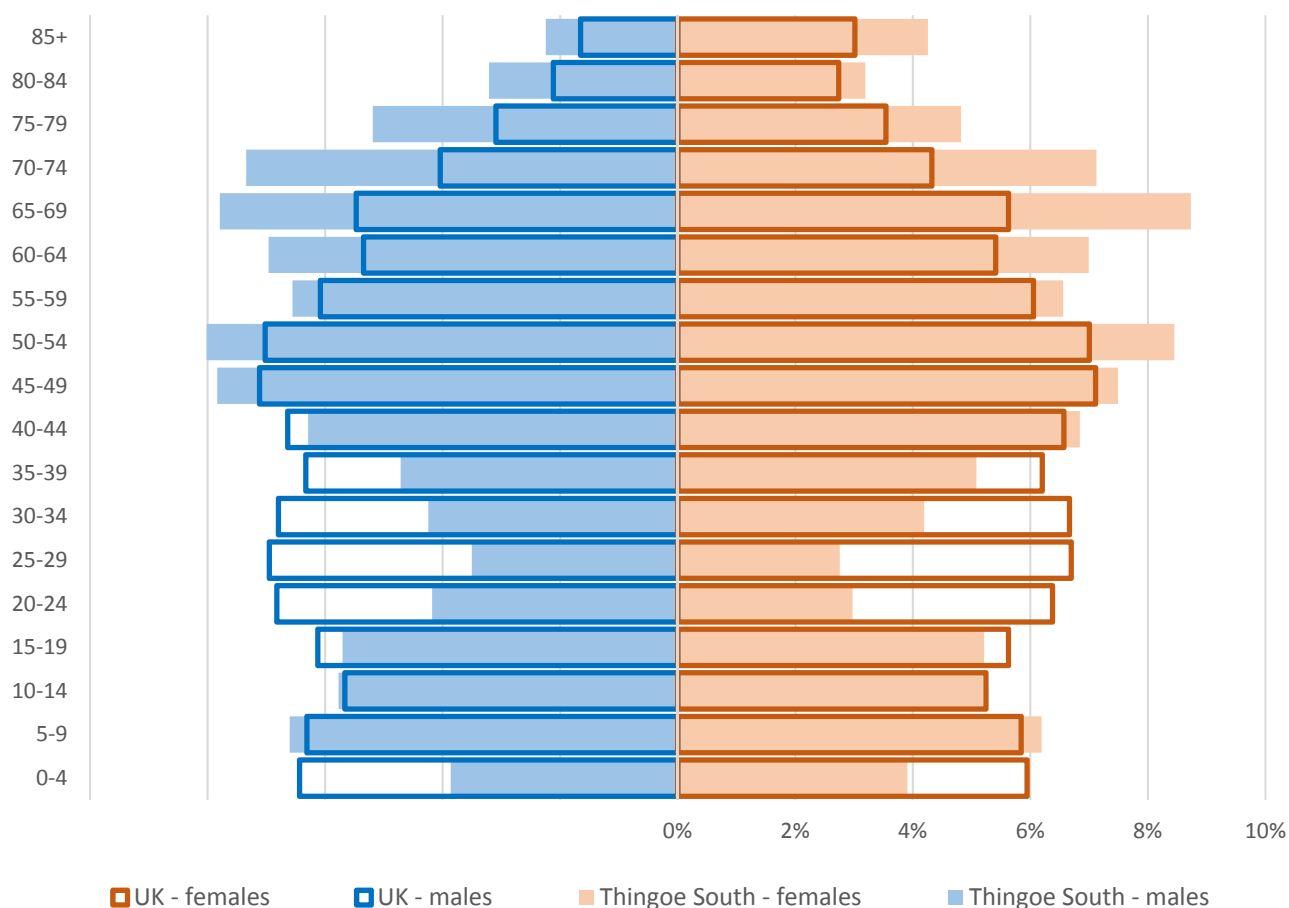
1. Where Electoral Divisions do not exactly match ward boundaries, we have adopted a "best fit" approach to produce a dataset.
2. District, county and national level data is provided where possible to provide a context for comparisons.



## DEMOGRAPHIC PROFILE - AGE

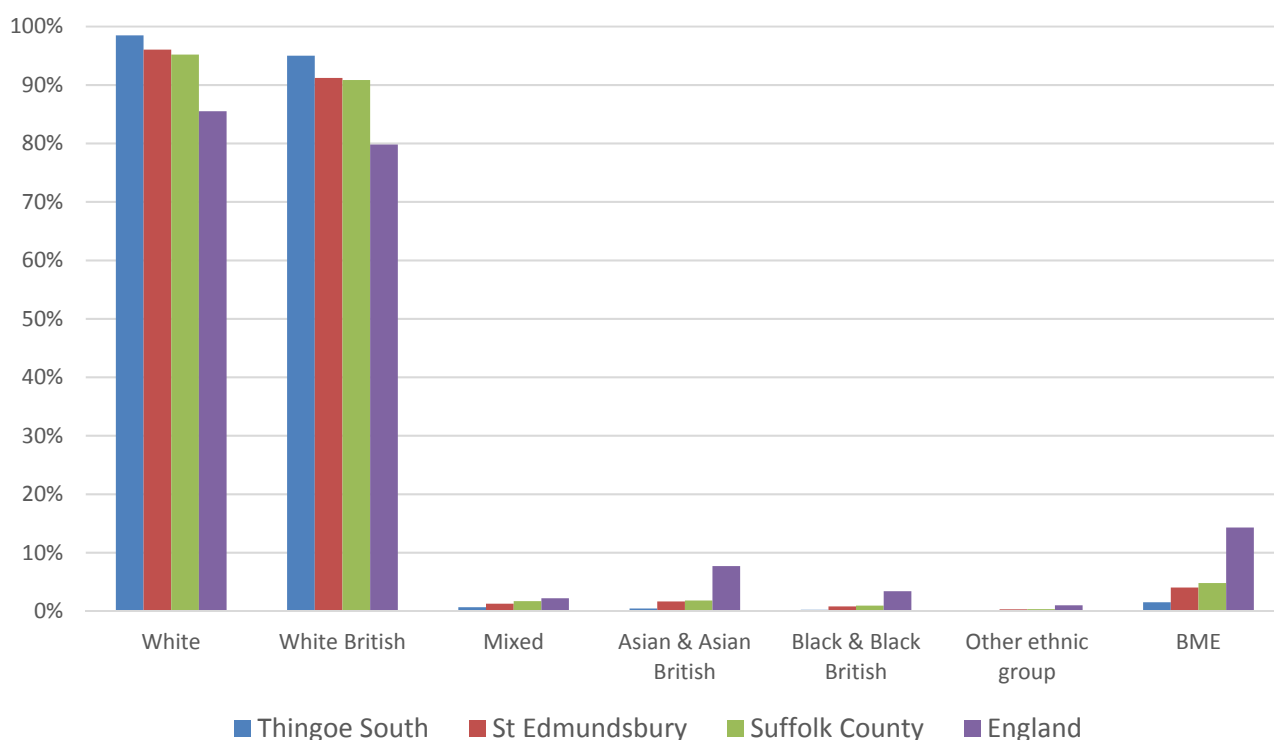
In mid-2015, the population of Thingoe South stood at 9,057, an increase of 0.6% since the 2011 Census. The age structure of the component wards and the division as a whole is set out below.

	Thingoe South Division	Barrow	Chedburgh	Horringer and Whelnetham	Rougham
<b>All Ages</b>	<b>9,057</b>	<b>2,339</b>	<b>2,132</b>	<b>2,234</b>	<b>2,352</b>
<b>0-4</b>	<b>352</b>	<b>109</b>	<b>70</b>	<b>81</b>	<b>92</b>
<b>5-9</b>	<b>579</b>	<b>165</b>	<b>110</b>	<b>149</b>	<b>155</b>
<b>10-14</b>	<b>496</b>	<b>123</b>	<b>94</b>	<b>127</b>	<b>152</b>
<b>15-19</b>	<b>494</b>	<b>117</b>	<b>113</b>	<b>128</b>	<b>136</b>
<b>20-24</b>	<b>323</b>	<b>87</b>	<b>65</b>	<b>82</b>	<b>89</b>
<b>25-29</b>	<b>283</b>	<b>75</b>	<b>64</b>	<b>60</b>	<b>84</b>
<b>30-34</b>	<b>382</b>	<b>82</b>	<b>95</b>	<b>101</b>	<b>104</b>
<b>35-39</b>	<b>444</b>	<b>113</b>	<b>84</b>	<b>128</b>	<b>119</b>
<b>40-44</b>	<b>595</b>	<b>172</b>	<b>124</b>	<b>149</b>	<b>150</b>
<b>45-49</b>	<b>694</b>	<b>168</b>	<b>170</b>	<b>176</b>	<b>180</b>
<b>50-54</b>	<b>746</b>	<b>188</b>	<b>187</b>	<b>173</b>	<b>198</b>
<b>55-59</b>	<b>594</b>	<b>146</b>	<b>165</b>	<b>141</b>	<b>142</b>
<b>60-64</b>	<b>632</b>	<b>159</b>	<b>161</b>	<b>131</b>	<b>181</b>
<b>65-69</b>	<b>749</b>	<b>196</b>	<b>201</b>	<b>180</b>	<b>172</b>
<b>70-74</b>	<b>655</b>	<b>160</b>	<b>145</b>	<b>186</b>	<b>164</b>
<b>75-79</b>	<b>453</b>	<b>133</b>	<b>118</b>	<b>91</b>	<b>111</b>
<b>80-84</b>	<b>290</b>	<b>76</b>	<b>90</b>	<b>69</b>	<b>55</b>
<b>85+</b>	<b>296</b>	<b>70</b>	<b>76</b>	<b>82</b>	<b>68</b>



- The age pyramid for Thingoe South shows a higher than average proportion of people over the age of 45
- The most common age group in Thingoe South is 65-69 year olds, followed by people aged 50-54 and 45-49
- There is a much lower than average number of people of working age, particularly 20-39 year olds

## ETHNICITY

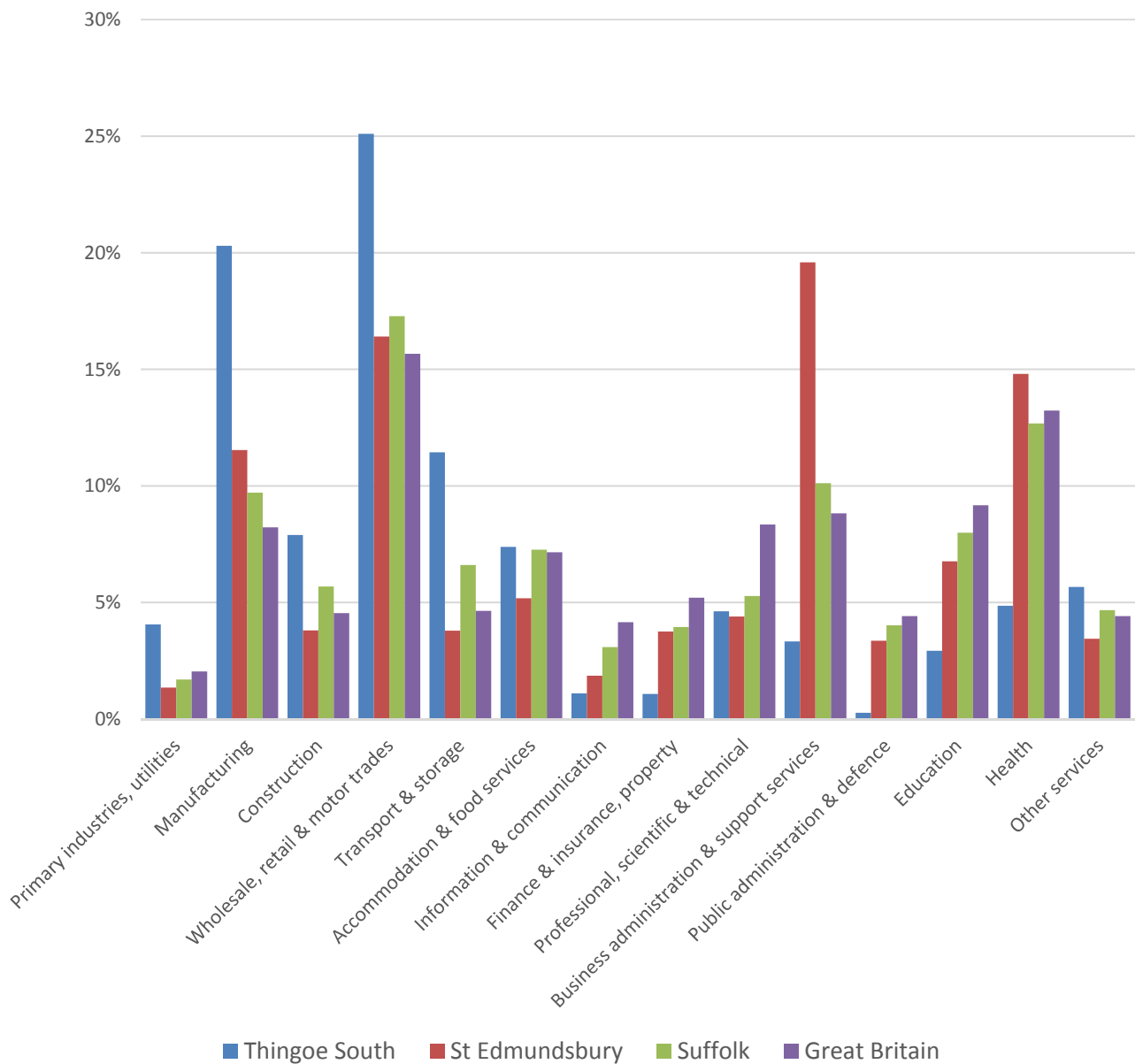


- According to the latest data (2011 Census), 98.5% (8,865) of the population of Thingoe South are white, one of the ten highest percentages for a division in Suffolk. 311 people are non white British
- There are 138 (1.5%) people of black or minority ethnic origin in the division, more than one and a half times the number at the time of the 2001 Census
- Thingoe South has a similar diversity profile to St Edmundsbury borough, and generally lower proportions of minority ethnic groups than Suffolk as a whole

	All people	White		White British		Mixed		Asian and Asian British		Black and Black British		Other Ethnic Group		Black or Minority Ethnic Total	
	Count	Count	%	Count	%	Count	%	Count	%	Count	%	Count	%	Count	%
Thingoe South	9,003	8,865	98.5	8,554	95.0	60	0.7	42	0.5	20	0.2	16	0.2	138	1.5
St Edmundsbury	111,008	106,615	96.0	101,239	91.2	1,404	1.3	1,824	1.6	902	0.8	263	0.2	4,393	4.0
Suffolk	728,163	693,195	95.2	661,458	90.8	12,472	1.7	13,131	1.8	6,854	0.9	2,511	0.3	34,968	4.8
England & Wales			86.0		80.5		2.2		6.7		2.8		0.4		12.1

# ECONOMY

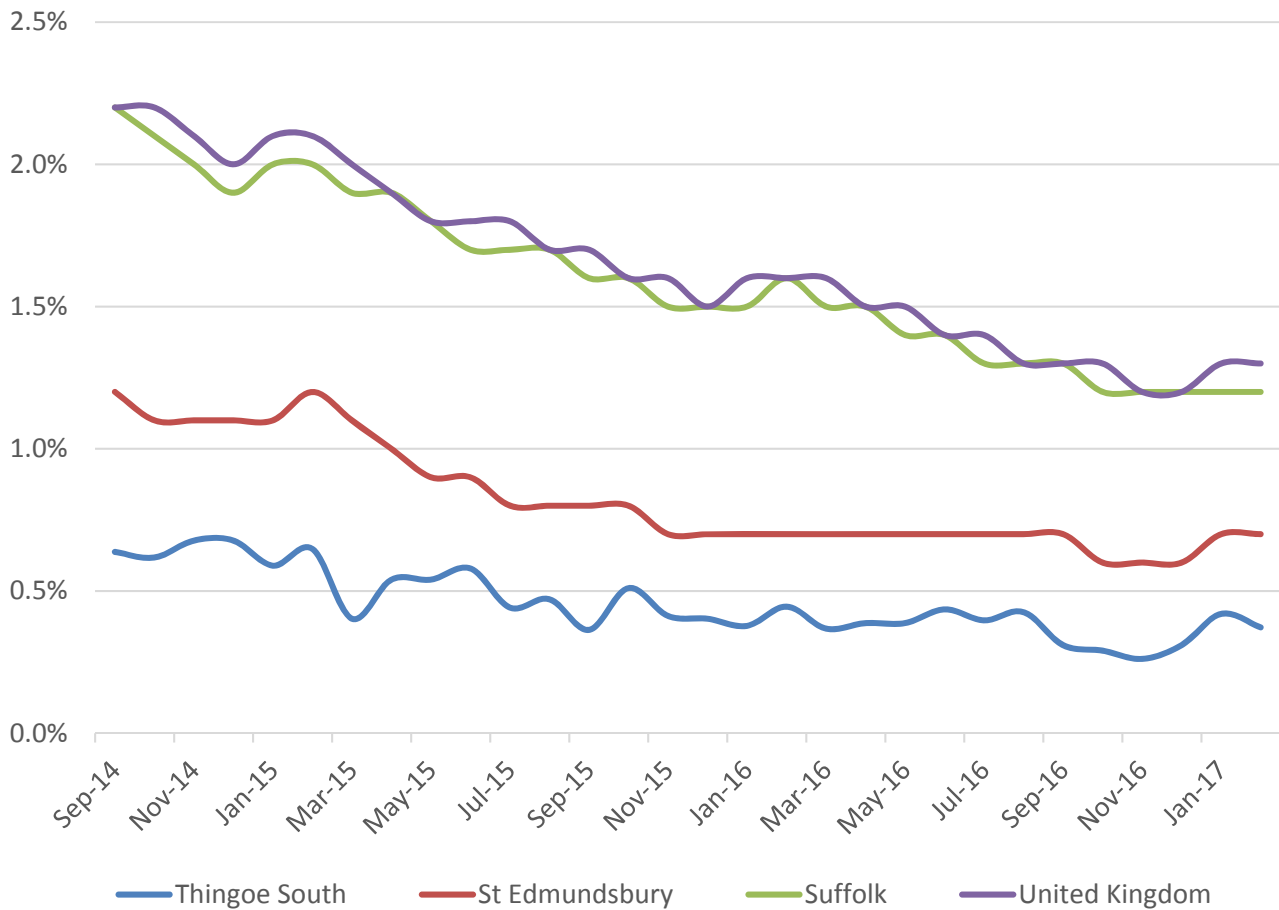
There are 3,900 people employed in Thingoe South.



- The key employment sectors in Thingoe South are wholesale, retail and motor trades, manufacturing and transport and storage, which between them account for 55% of jobs in the division
- The proportion of employment in these three sectors in Thingoe South is much higher than the national average

# LABOUR MARKET

## JOB SEEKERS ALLOWANCE CLAIMANT RATE



- The Job Seekers Allowance claimant rate in Thingoe South has seen a slight decline from September 2014 to February 2017
- The claimant unemployment rate in the division is consistently below the St Edmundsbury borough average and below the level seen across Suffolk as a whole and the UK
- In percentage terms, around 0.4% of the working age population (aged 16-64) are claiming currently JSA, down from 0.6% in 2014



# SCHOOLS

## SCHOOL INFORMATION

### Schools in the Division

Name	Phase	Average cohort size at:		Latest Ofsted	Latest Ofsted Date
		Foundation Stage (age 5)	KS2 (age 11)		
Barrow CEVCP School	Primary	30		Outstanding	19/10/2011
Great Whelnetham CEVCP School	Primary	25		Outstanding	13/12/2007
Ickworth Park Primary School	Primary	37		Good	17/11/2015
Rougham CEVCP School	Primary	29	19	Inadequate	18/01/2017

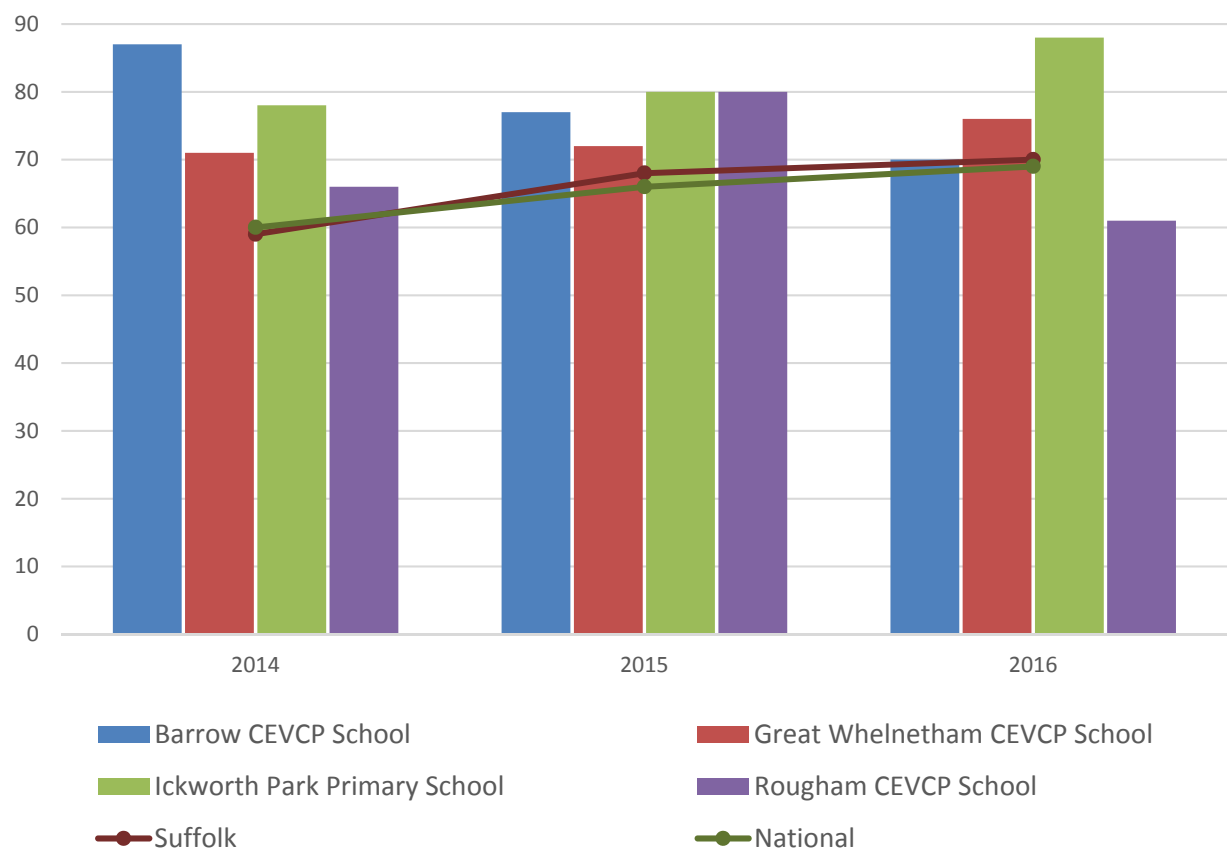
### School Catchment overlaps with the Division

Name	Phase	Average cohort size at:				Latest Ofsted	Latest Ofsted Date
		Foundation Stage (age 5)	KS2 (age 11)	KS4 (age 16)	KS5 (age 18)		
All Saints CEVCP School	Primary	23				Outstanding	03/12/2010
Cockfield CEVCP School	Primary	8	8			Good	10/06/2015
Hartest CEVCP School	Primary	11	10			Good	31/01/2013
Rattlesden CofE Primary Academy	Primary	16	12			Not yet inspected as an Academy	
Sexton's Manor CP School	Primary	29				Good	07/05/2014
Horringer Court Middle School	Middle		89			Good	14/06/2016
Westley Middle School	Middle		118			Good	13/12/2016
County Upper School	Upper			245	102	Outstanding	18/09/2013
King Edward VI CEVC Upper School	Upper			345	174	Good	03/12/2013
Ormiston Sudbury Academy	Upper			141	43	Good	05/06/2014
Sybil Andrews Academy	Upper					Not yet inspected as an Academy	
Thurston Community College	Upper		56	344	142	Good	

01/05/20

# SCHOOL ATTAINMENT

Foundation Stage Profile (reception)  
% pupils achieving Good Level of Development (GLD)

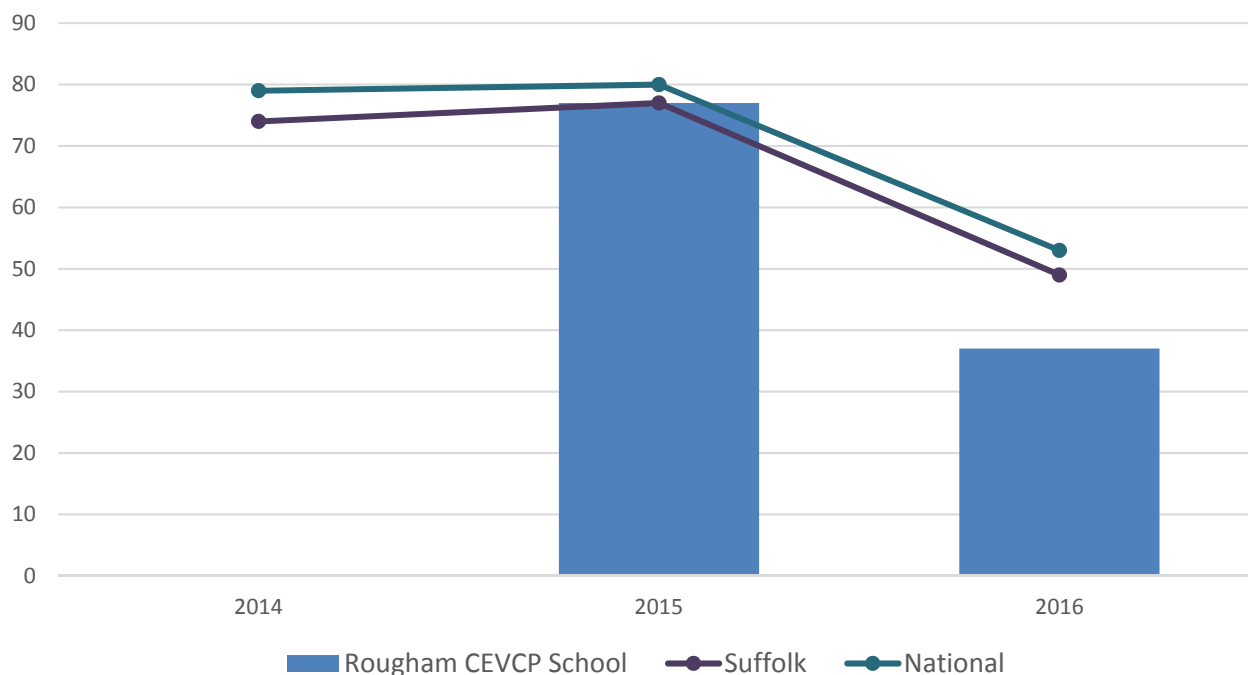


- Foundation Stage attainment at all schools in Thingoe South has been similar to or above the national average over the past three years, with the exception of Rougham CEVCP School in 2016, which saw below average attainment

### Key Stage 2 (age 11)

Pupil Achievement in all three subjects, Reading, Writing and Mathematics  
(2014–2015 as % Level 4 or better & 2016 % Expected Level or better).

In July 2016, there was a change in the way pupil achievement is measured at the end of KS2. Prior to 2016, pupils received National Curriculum Level grades for English and Maths, with L4 being the expected level at the end of Key Stage 2. In 2016 the measure became a scaled score and shows whether or not a pupil has achieved the national standard for that subject.

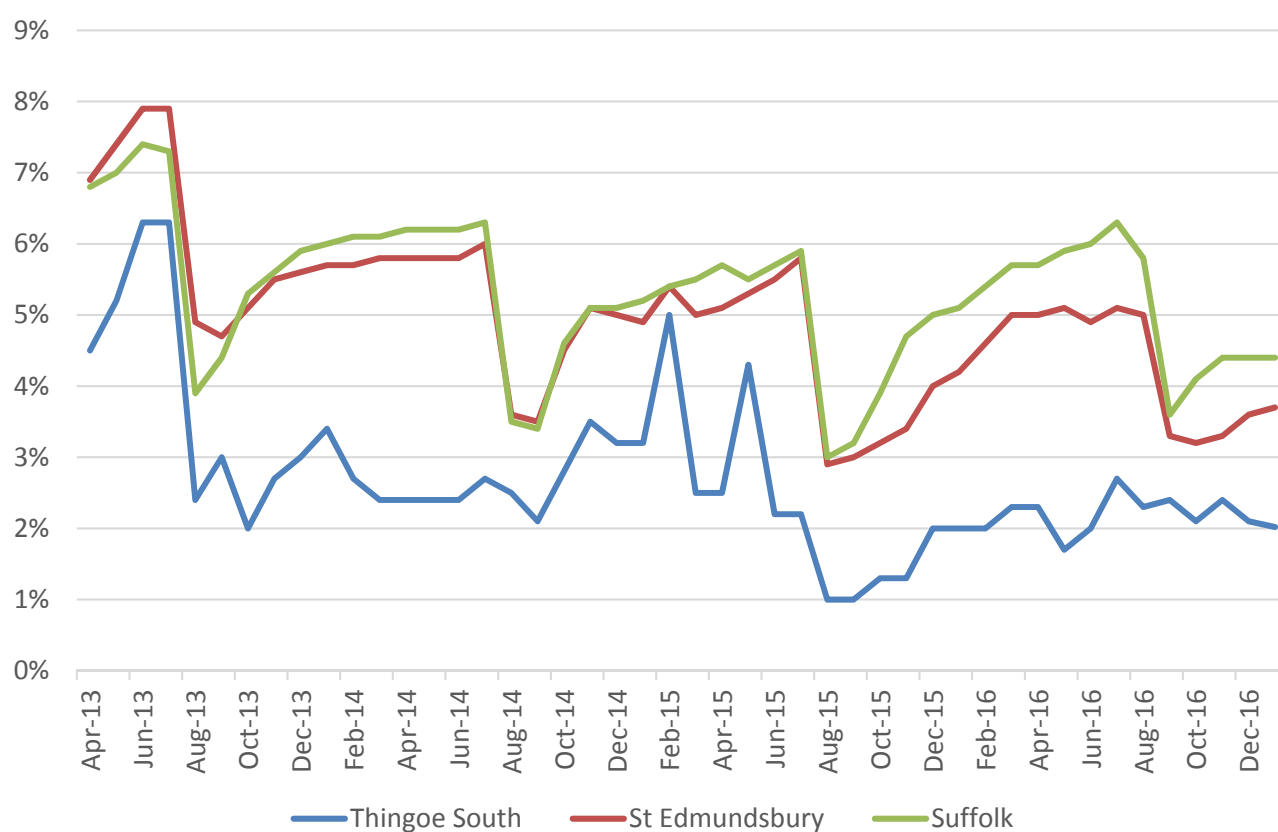


- Key Stage 2 attainment in Thingoe South has been provided at Rougham CEVCP School since 2015
- In 2015, 77% of pupils achieved the level 4 or better in English and mathematics, equal to the Suffolk average but just below the national level
- In 2016, 37% of pupils at Rougham CEVCP School achieved the new expected level or better in reading, writing and mathematics, below the Suffolk average of 49% and the national average of 53%

### GCSE (Key Stage 4) (age 16)

There are no Upper schools located within the Thingoe South division

## NEET % (NOT IN EDUCATION, EMPLOYMENT OR TRAINING)

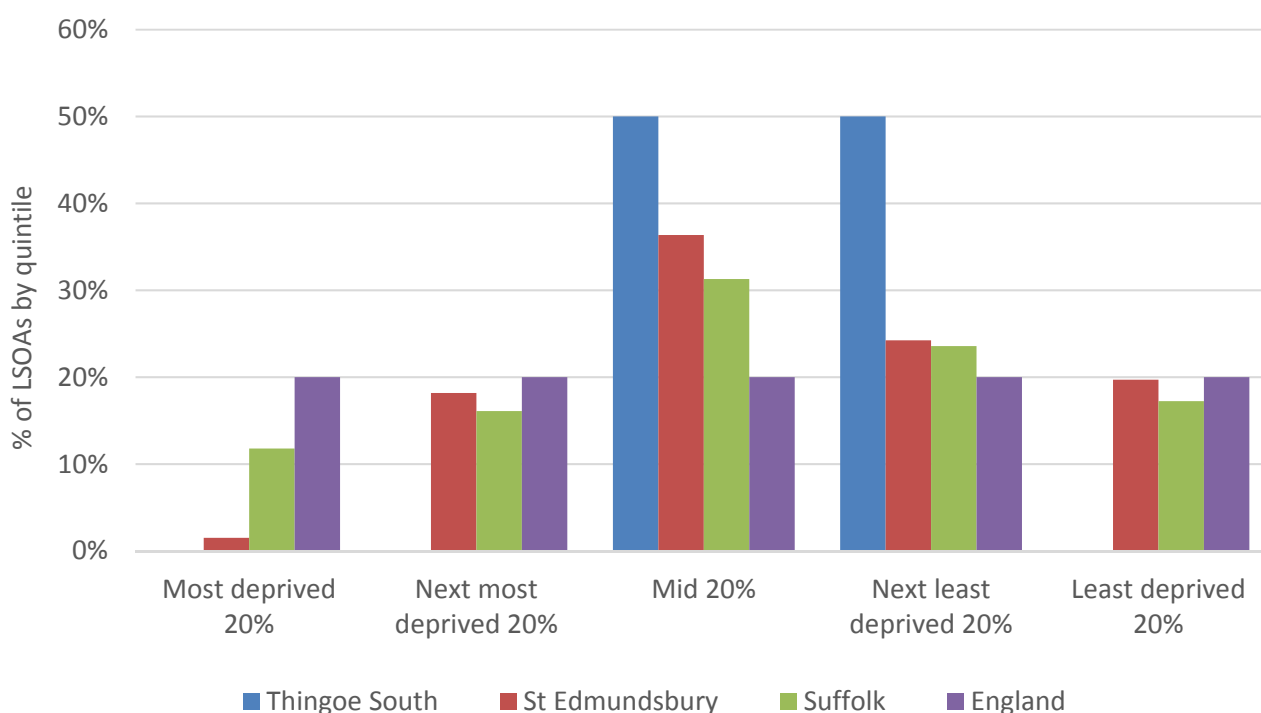


- In January 2017, 2.0% of 16-18 year olds were classified as NEET in Thingoe South (where current activity is known)
- NEET levels in Thingoe South have been consistently below the borough and county level over the past four years

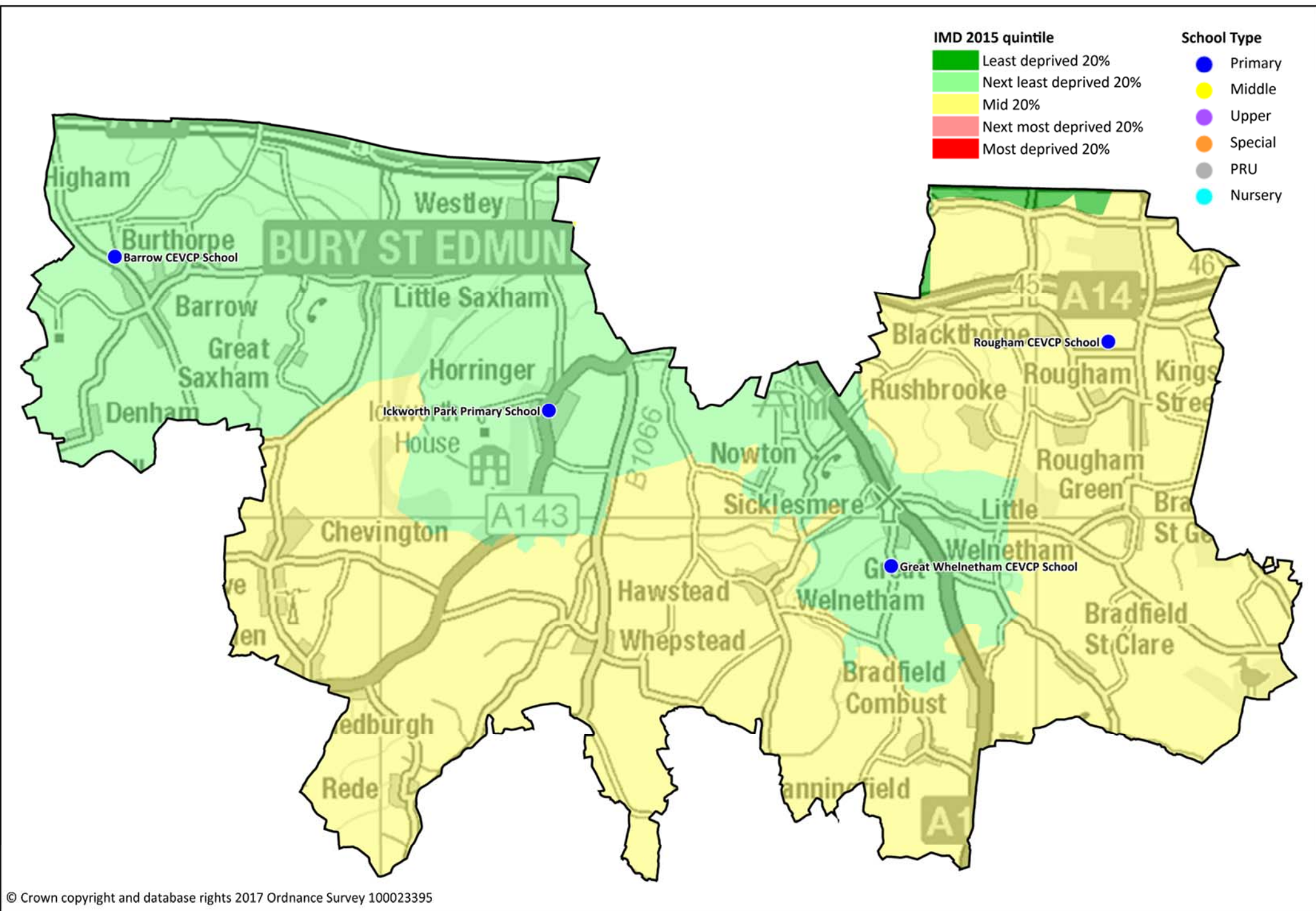
## INDEX OF MULTIPLE DEPRIVATION (IMD) 2015 (SEE MAP OVERLEAF)

The IMD combines a number of indicators, chosen to cover a range of economic, social and housing issues, into a single deprivation score for each small area in England. This allows each area to be ranked relative to one another according to their level of deprivation. Small areas (Lower Super Output Areas, average population 1,500) are most usually described as being in 1 of 5 quintile bands. The bottom quintile represents the 20% of areas that are the most deprived in the country; these are shaded red on the map. The top quintile represents the least deprived areas in the country, and is shaded green.

The Index is widely used to analyse patterns of deprivation, identify areas that would benefit from special initiatives or programmes and as a tool to determine eligibility for specific funding streams.



- The IMD 2015 shows that relative deprivation levels in Thingoe South are moderately to low, with no parts of the division among the most deprived 40% nationally
- Of the four Lower Layer Super Output Areas (LSOA) comprising the division, two are ranked in the mid 20% of areas in the country while two are in the second least deprived quintile

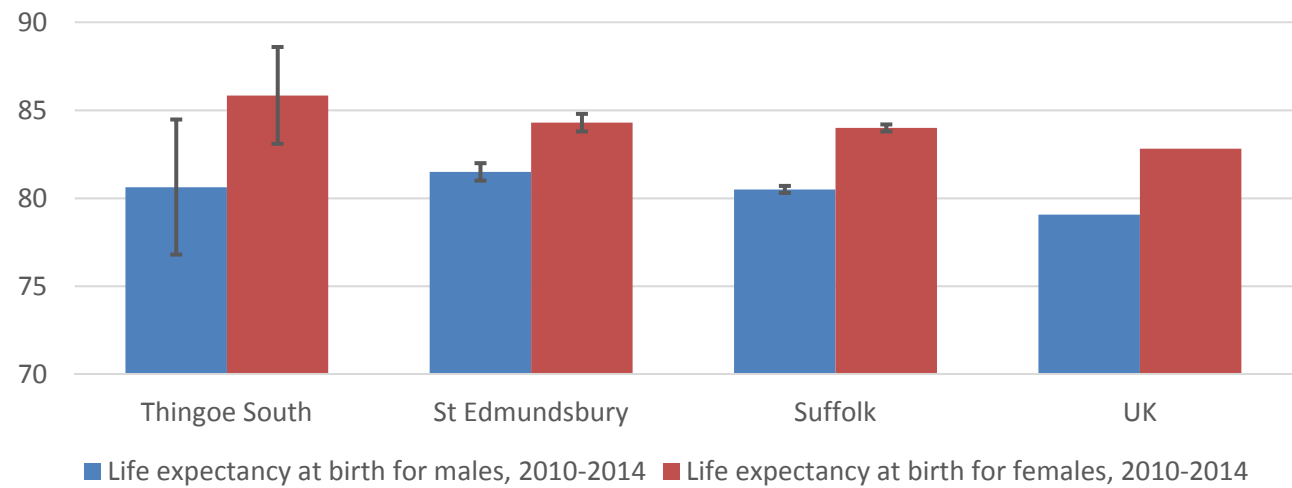




# HEALTH

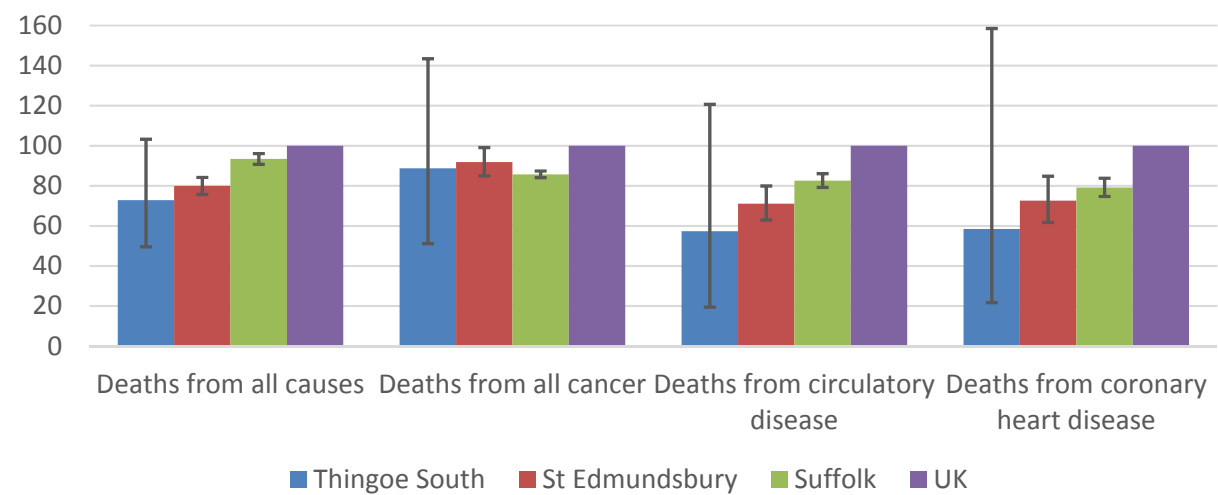
The local data used here is based on relatively small numbers. The confidence limits provide an indication of the reliability of the data. The 95% confidence intervals utilised on the chart provide a range within which there is 95% chance of the true result lying.

## LIFE EXPECTANCY AT BIRTH



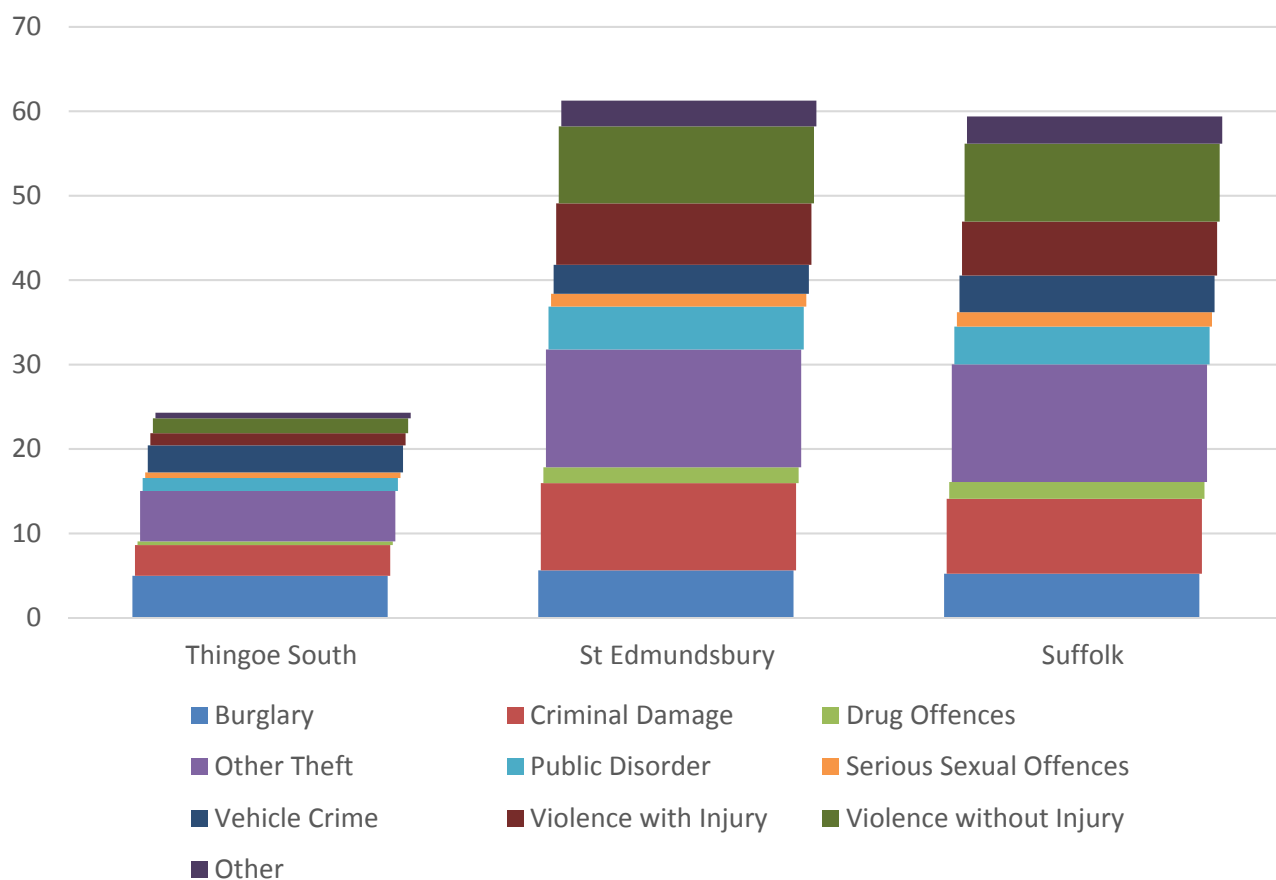
- The life expectancy estimate for women in Thingoe South is nearly 86; above the borough, county and national averages
- The figure for men is slightly below the borough average but very similar to the Suffolk figure of 81

## DEATHS, UNDER 75 YEARS, STANDARDISED MORTALITY RATIO



- The rate of early deaths from all causes is significantly lower in Thingoe North the borough, county and national levels with the exception of cancer, which caused a rate of early deaths slightly higher than the Suffolk average
- The standardised mortality ratio data shown here means that for every 100 early deaths from all causes across the UK as a whole, there are an estimated 73 comparable deaths in Thingoe South

## CRIME & COMMUNITY SAFETY



- Thingoe South shows a very low rate of crime compared to the borough and county levels
- In 2015, there were just over 24 recorded crimes per 1,000 residents in Thingoe South compared to 61 in Mid Suffolk and 59 across the county as a whole
- The most common types of crime in the division are burglary, “other theft” and criminal damage
- The rate of vehicle crimes recorded in the division is quite high considering the otherwise low crime rate

## ADDITIONAL INFORMATION

### Parishes in Division

Barrow	Horringer
Bradfield Combust with Stanningfield	Ickworth
Bradfield St. Clare	Little Whelnetham
Bradfield St. George	Nowton
Chedburgh	Rede
Chevington	Rushbrooke with Rougham
Denham	The Saxhams
Great Whelnetham	Westley
Hawstead	Whepstead

## DATA SOURCES

Category	Indicator	Source
Demographic Profile	Quinary population table 2015	ONS 2015 mid-year population estimates
	Population pyramid 2015	ONS 2015 mid-year population estimates
	Ethnicity 2011	ONS 2011 Census
Economy	Employment by broad industrial sector 2015	ONS Business Register and Employment Survey via NOMIS
Labour market	Job Seekers Allowance Claimant Rate (% 16-64 population) 2014-2017	DWP via NOMIS
Education	School information and attainment 2014-2016	Suffolk County Council
	% 16-18 year olds NEET (Not in Employment, Education or Training) 2013-2017	Suffolk County Council
Deprivation	Index of Multiple Deprivation 2015	Department for Communities and Local Government
Health	Life expectancy at birth 2010-2014	Public Health England
Health	Standardised mortality ratio for deaths from all causes, cancer, circulatory disease and coronary heart disease, aged under 75 2010-2014. The standardised mortality ratio is the ratio of observed deaths in the study group to expected deaths in the general population.	Public Health England

For more data and information about Thingoe South Electoral Division, see the Suffolk Observatory [www.suffolkobservatory.info](http://www.suffolkobservatory.info)

