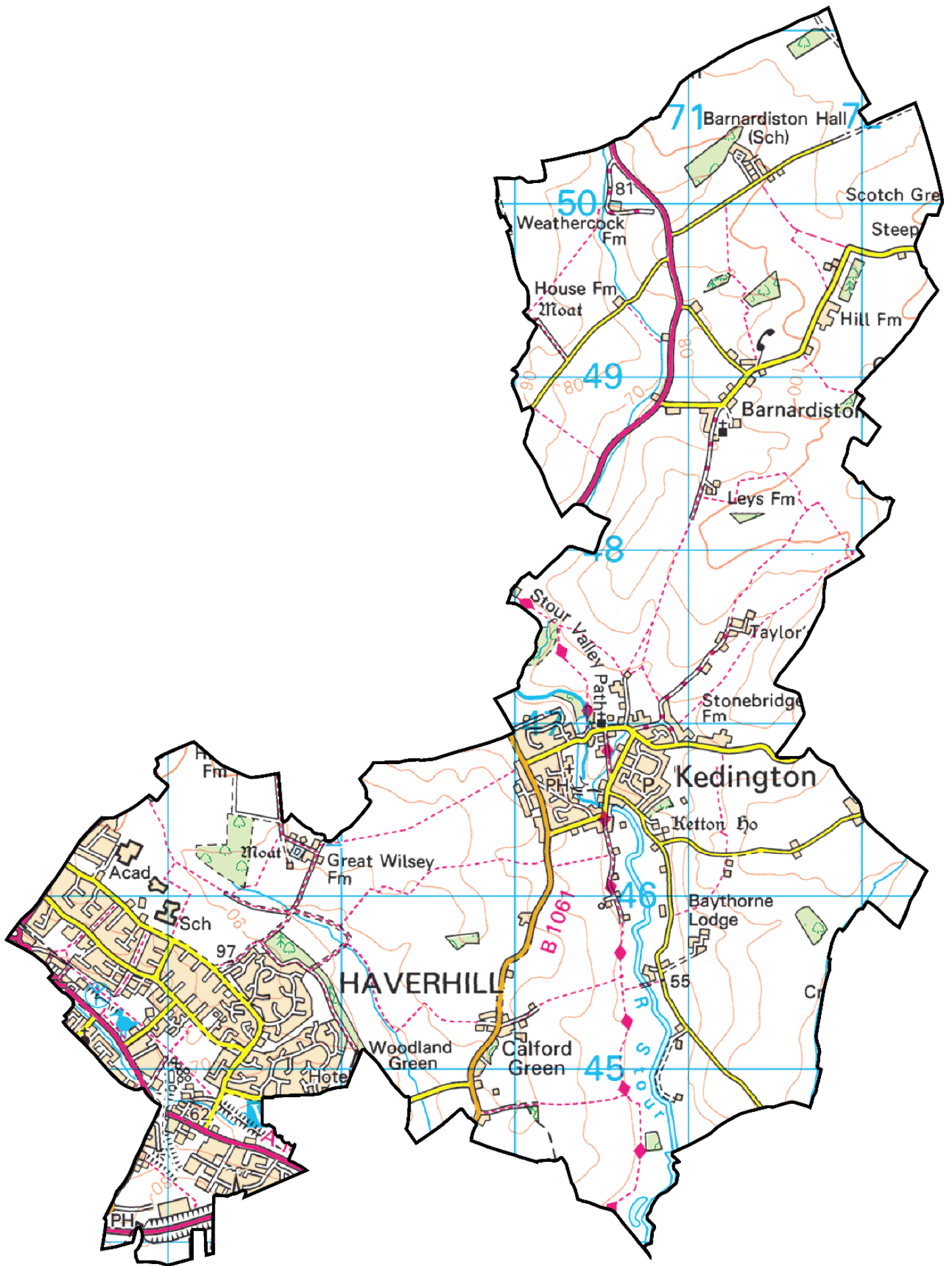


HAVERHILL EAST & KEDINGTON

ELECTORAL DIVISION PROFILE 2017

This Division comprises Haverhill East and Kedington wards

www.suffolkobservatory.info



CONTENTS

- Demographic Profile: Age & Ethnicity
- Economy and Labour Market
- Schools & NEET
- Index of Multiple Deprivation
- Health
- Crime & Community Safety
- Additional Information
- Data Sources

ELECTORAL DIVISION PROFILES: AN INTRODUCTION

These profiles have been produced to support elected members, constituents and other interested parties in understanding the demographic, economic, social and educational profile of their neighbourhoods. We have used the latest data available at the time of publication.

Much more data is available from national and local sources than is captured here, but it is hoped that the profile will be a useful starting point for discussion, where local knowledge and experience can be used to flesh out and illuminate the information presented here.

The profile can be used to help look at some fundamental questions e.g.

- Does the age profile of the population match or differ from the national profile?
- Is there evidence of the ageing profile of the county in all the wards in the Division or just some?
- How diverse is the community in terms of ethnicity?
- What is the impact of deprivation on families and residents?
- Does there seem to be a link between deprivation and school performance?
- What is the breakdown of employment sectors in the area?
- Is it a relatively healthy area compared to the rest of the district or county?
- What sort of crime is prevalent in the community?

A vast amount of additional data is available on the **Suffolk Observatory**

www.suffolkobservatory.info

The Suffolk Observatory is a free online resource that contains all Suffolk's vital statistics; it is the one-stop-shop for information and intelligence about Suffolk. Through data, reports and profiles, the Suffolk Observatory provides a comprehensive picture of the County. It is a great source for useful facts and figures that can be used for writing reports and presentations, informing strategic and business planning, preparing funding applications or supporting academic research. Data is presented around the key themes of education and skills, economy and employment, health and care, population, deprivation, housing, environment, transport and travel and crime. All areas of the county are covered, right down to district, ward and parish level, with information easily accessible in a variety of formats. You can also build your own reports by different themes and topics.

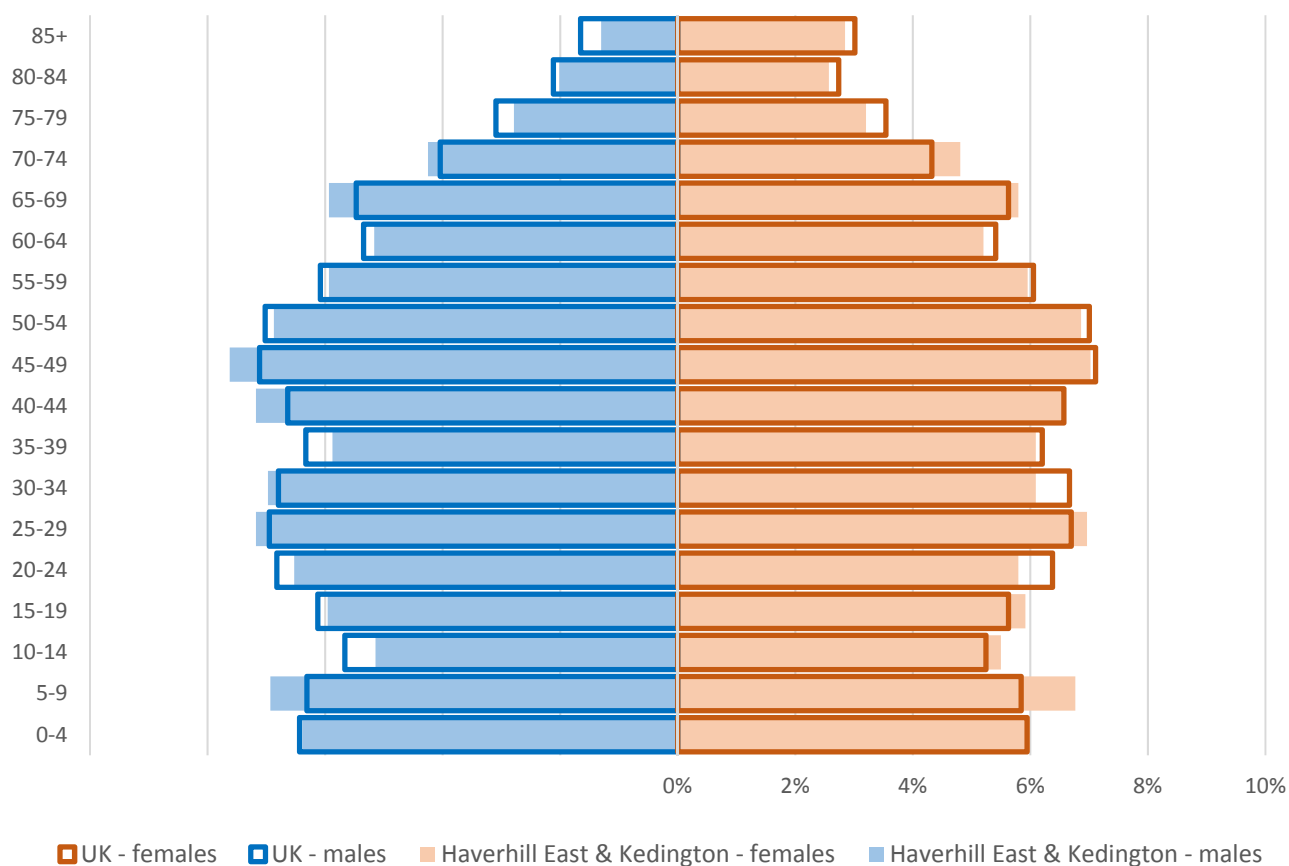
Technical Notes:

1. Where Electoral Divisions do not exactly match ward boundaries, we have adopted a "best fit" approach to produce a dataset.
2. District, county and national level data is provided where possible to provide a context for comparisons.

DEMOGRAPHIC PROFILE - AGE

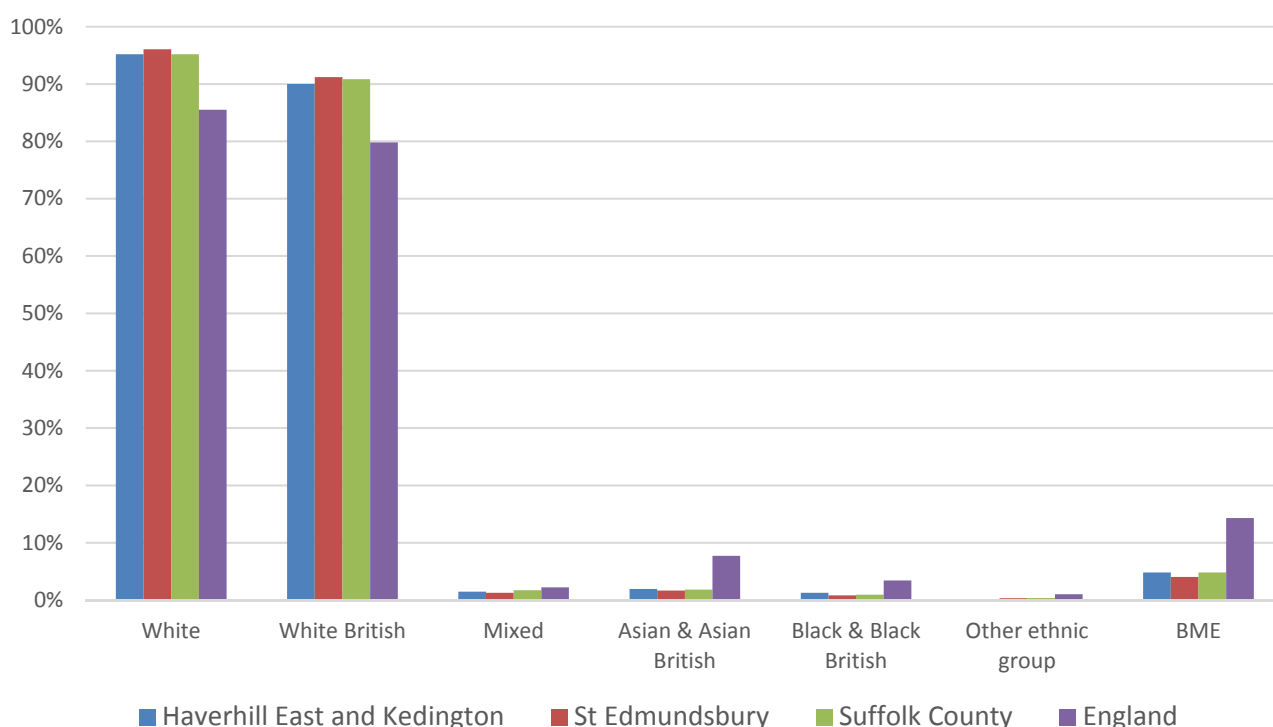
In mid-2015, the population of Haverhill East and Kedington stood at 9,974, an increase of 2.1% since the 2011 Census. The age structure of the component wards and the division as a whole is set out below.

	Haverhill East and Kedington Division	Haverhill East	Kedington
All Ages	9,974	7,940	2,034
0-4	617	510	107
5-9	683	557	126
10-14	531	417	114
15-19	592	499	93
20-24	614	554	60
25-29	705	626	79
30-34	651	551	100
35-39	597	488	109
40-44	686	544	142
45-49	730	578	152
50-54	685	537	148
55-59	593	455	138
60-64	517	407	110
65-69	585	423	162
70-74	452	276	176
75-79	299	216	83
80-84	229	164	65
85+	208	138	70



- The age pyramid for Haverhill East and Kedington shows that the division has a similar age profile to the national average
- The most common age group in Haverhill East and Kedington is 45-49 year olds, followed by 25-29 year olds. The number of people of retirement age looks set to increase markedly in the coming years
- There is a significantly larger proportion of children aged 5-9 in the division compared to the national average

ETHNICITY

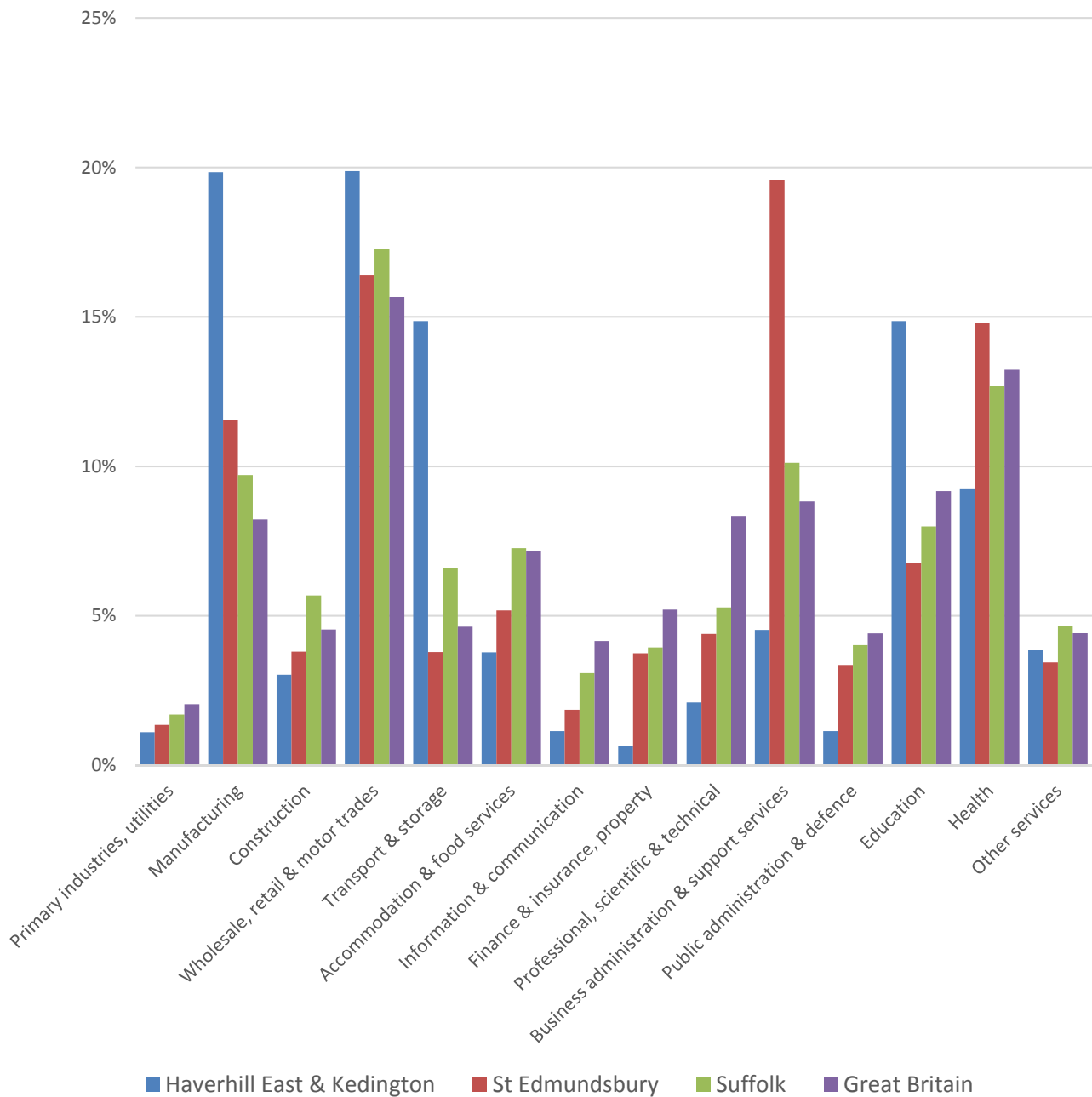


- According to the latest data (2011 Census), 95.2% (9,304) of the population of Haverhill East and Kedington are white, which is in the second lowest quarter of percentages for a division in Suffolk. 508 people are not white British
- There are 469 (4.8%) people of black or minority ethnic origin in the division, more than treble the number at the time of the 2001 Census
- Haverhill East and Kedington has a similar diversity profile to St Edmundsbury, and generally similar proportions of minority ethnic groups as Suffolk as a whole

	All people	White		White British		Mixed		Asian and Asian British		Black and Black British		Other Ethnic Group		Black or Minority Ethnic Total	
	Count	Count	%	Count	%	Count	%	Count	%	Count	%	Count	%	Count	%
Haverhill East and Kedington	9,773	9,304	95.2	8,796	90.0	142	1.5	188	1.9	122	1.2	17	0.2	469	4.8
St Edmundsbury	111,008	106,615	96.0	101,239	91.2	1,404	1.3	1,824	1.6	902	0.8	263	0.2	4,393	4.0
Suffolk	728,163	693,195	95.2	661,458	90.8	12,472	1.7	13,131	1.8	6,854	0.9	2,511	0.3	34,968	4.8
England & Wales			86.0		80.5		2.2		6.7		2.8		0.4		12.1

ECONOMY

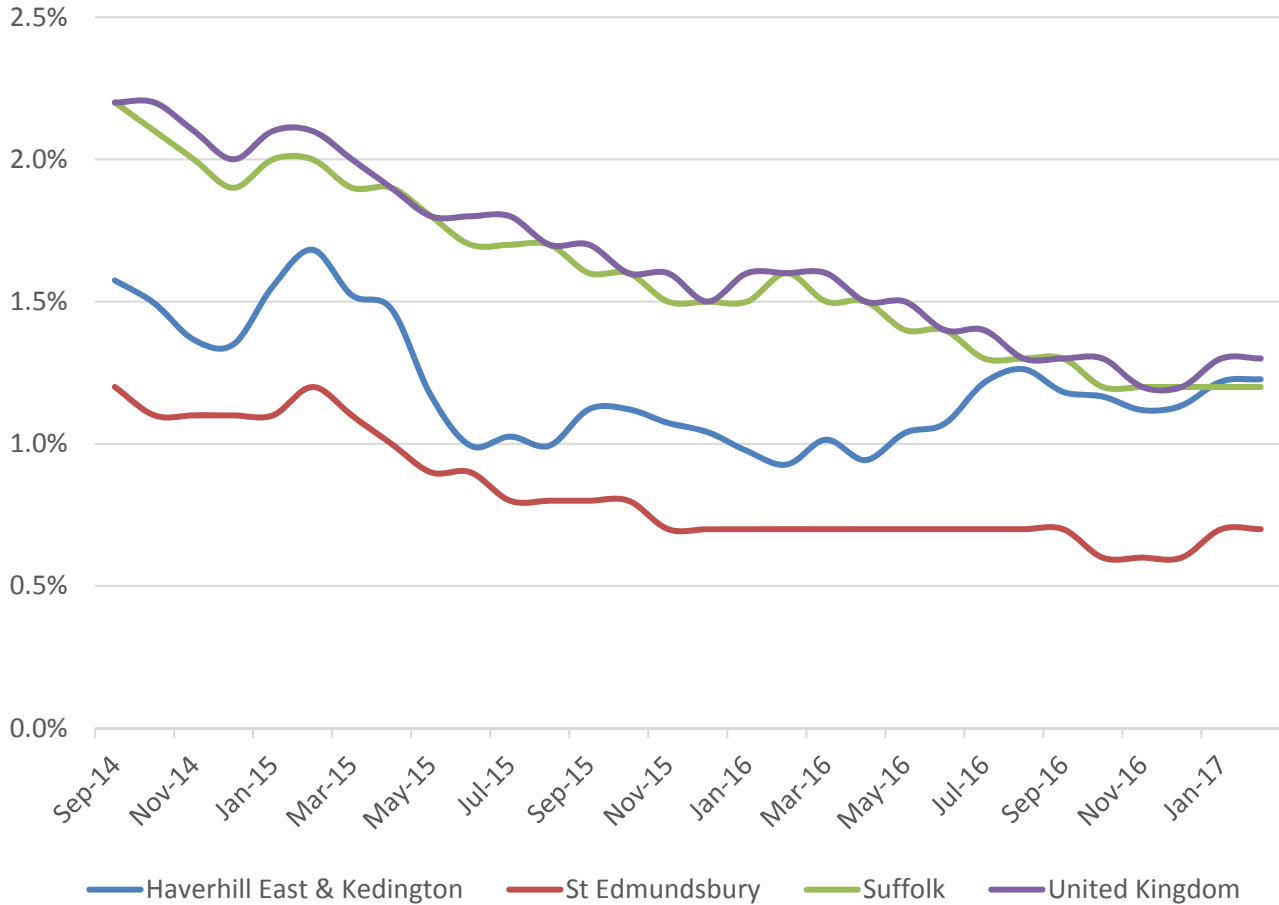
There are 2,900 people employed in Haverhill East and Kedington.



- The key employment sectors are manufacturing, wholesale, retail and motor trades, transport and storage and education
- Manufacturing, transport and storage and education are particularly important as the proportion of these sectors in Haverhill East and Kedington is much higher than the national average. Around half of employees in Haverhill East and Kedington are employed in these three sectors
- A greater proportion of employment in the division is in lower skilled sectors

LABOUR MARKET

JOB SEEKERS ALLOWANCE CLAIMANT RATE



- Haverhill East and Kedington has seen a variable Job Seekers Allowance claimant rate during the last three years
- The proportion of the working age population (aged 16-64) claiming JSA fell from around 1.6% in September 2014 to 0.9% in February 2016 before increasing to 1.5% in early 2017
- Historically, the claimant unemployment rate in the division has been below the county and UK average but is now at a similar level, and remains consistently above the St Edmundsbury average

SCHOOLS

SCHOOL INFORMATION

Schools in the Division

		Average cohort size at:					
Name	Phase	Foundation Stage (age 5)	KS2 (age 11)	KS4 (age 16)	KS5 (age 18)	Latest Ofsted	Latest Ofsted Date
Coupals Primary Academy	Primary	34	39			Not yet inspected as an Academy	
Kedington Primary Academy	Primary	29	28				
Westfield Primary Academy	Primary	58	29			Good	10/06/2015
Churchill Special Free School	Special		5	1		Outstanding	01/07/2015
Samuel Ward Academy	Upper			185	66	Outstanding	09/10/2012

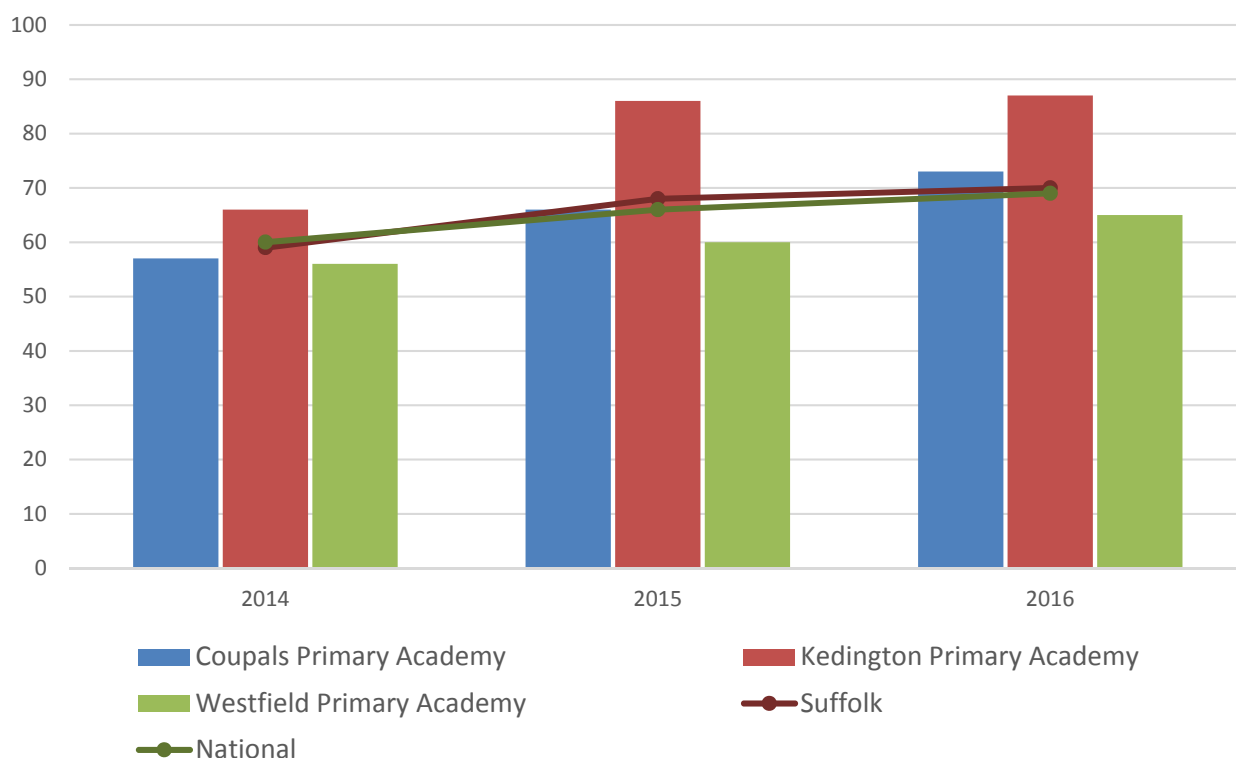
School Catchment overlaps with the Division

Name	Phase	Average cohort size at:				Latest Ofsted	Latest Ofsted Date
		Foundation Stage (age 5)	KS2 (age 11)	KS4 (age 16)	KS5 (age 18)		
Place Farm Primary Academy	Primary	62	55			Good	23/04/2013
Castle Manor Academy	Upper			138	29	Requires Improvement	26/01/2017

SCHOOL ATTAINMENT

Foundation Stage Profile (reception)

% pupils achieving Good Level of Development (GLD)

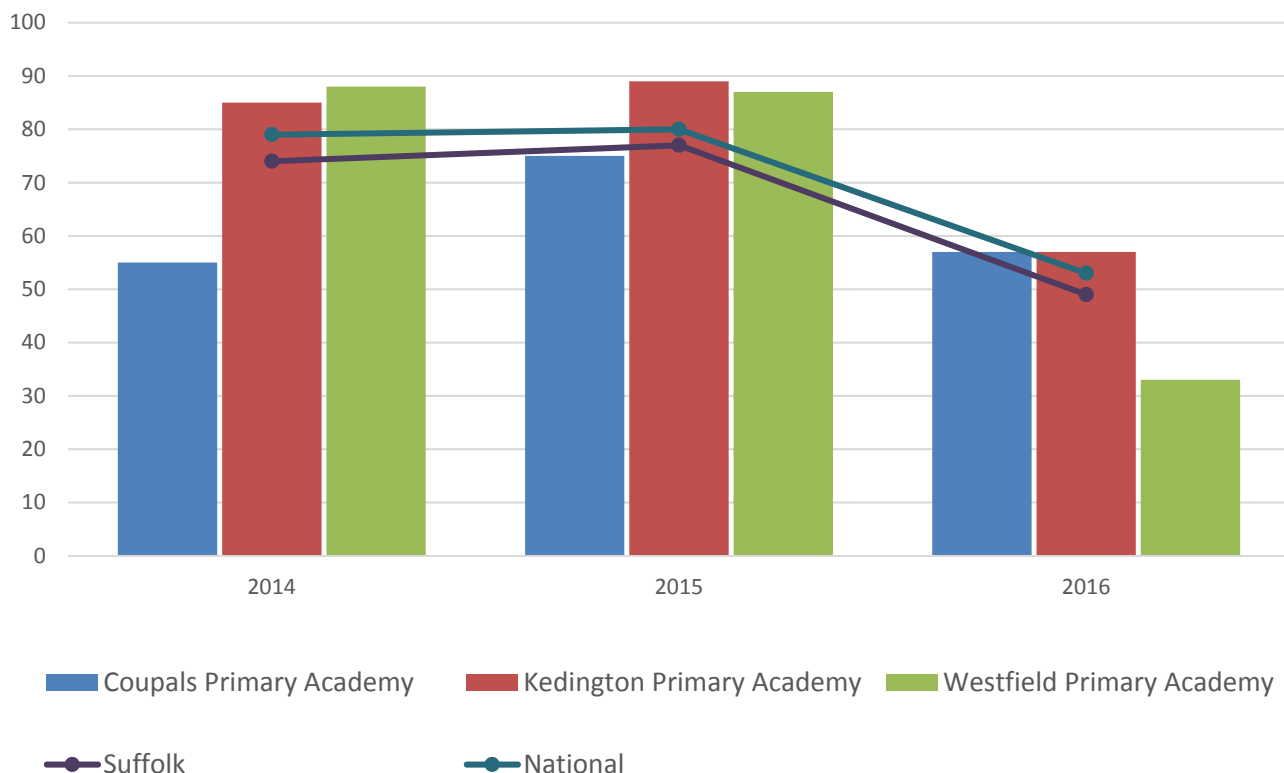


- Foundation Stage attainment has steadily increased across all schools in Haverhill East and Kedington from 2014 to 2016
- The percentage of pupils achieving a Good Level of Development at Kedington Primary Academy has been consistently above the Suffolk and national average and in 2016 reached 87% (69% nationally and 70% in Suffolk)
- Coupals Primary Academy also saw above average attainment in 2016 for the first time during these three years
- Attainment at Westfield Primary Academy also improved during this period, rising from 56% of pupils achieving a Good Level of Development in 2014 to 65% in 2016. However, attainment at the school has remained below the Suffolk and national average

Key Stage 2 (age 11)

Pupil Achievement in all three subjects, Reading, Writing and Mathematics
(2014–2015 as % Level 4 or better & 2016 % Expected Level or better).

In July 2016, there was a change in the way pupil achievement is measured at the end of KS2. Prior to 2016, pupils received National Curriculum Level grades for English and Maths, with L4 being the expected level at the end of Key Stage 2. In 2016 the measure became a scaled score and shows whether or not a pupil had achieved the national standard for that subject.

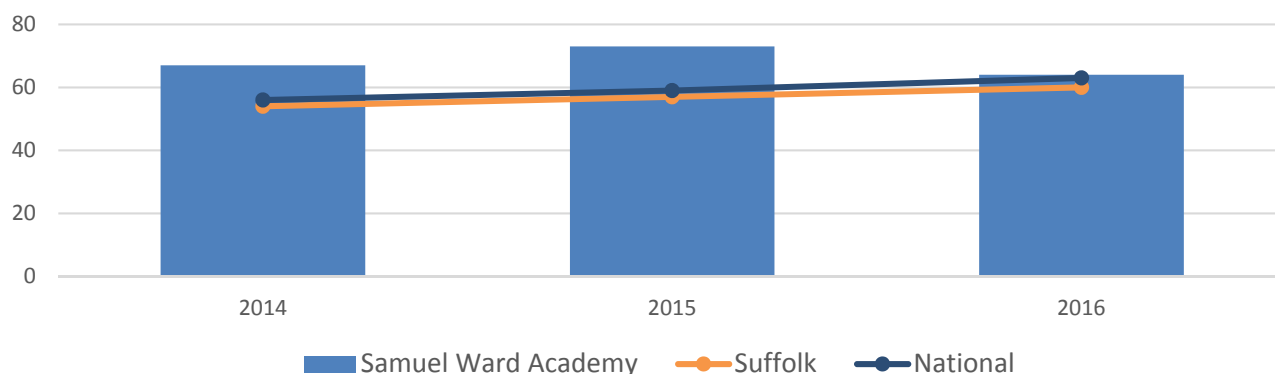


- Key Stage 2 attainment at schools in Haverhill East and Kedington has tended to be above average in the past three years. In each year, average attainment at two schools was above the Suffolk and national level, with one receiving below average results
- Attainment at Kedington Primary Academy has been consistently above the county and national average throughout the 2014 to 2016 period
- Coupals Primary School saw disappointing attainment in 2014 before much stronger results from pupils in 2015 and 2016
- An above average percentage of pupils at Westfield Primary Academy achieved level 4 or better in English and mathematics in 2014 and 2015, but the percentage achieving the expected level or better in reading, writing and mathematics in 2016 was below average at 33% (49% in Suffolk and 53% nationally)

GCSE (Key Stage 4) (age 16)

% pupils achieving five or more GCSEs (or equivalent) at A*-C including English and Mathematics

In July 2016, an additional measure of pupil achievement at Key Stage 4 was introduced but for the purposes of this profile and to demonstrate change over time, we have presented consistent data for the period 2014-2016 using the % pupils achieving five or more GCSEs (or equivalent) at A*-C including English and Mathematics.

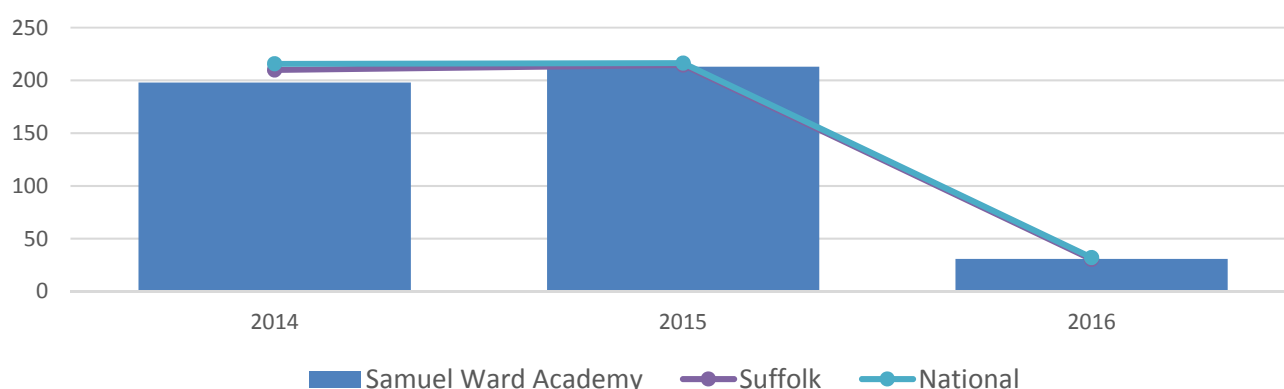


- GCSE attainment at Samuel Ward Academy has fluctuated over the past three years but has remained consistently above the Suffolk and national average
- The percentage of pupils achieving 5 or more A*-C including English and mathematics was particularly high in 2015 at 73% before dipping to 64% in 2016 (compared to the Suffolk average of 60% and national average of 63%)

A Level (Key Stage 5) (age 18)

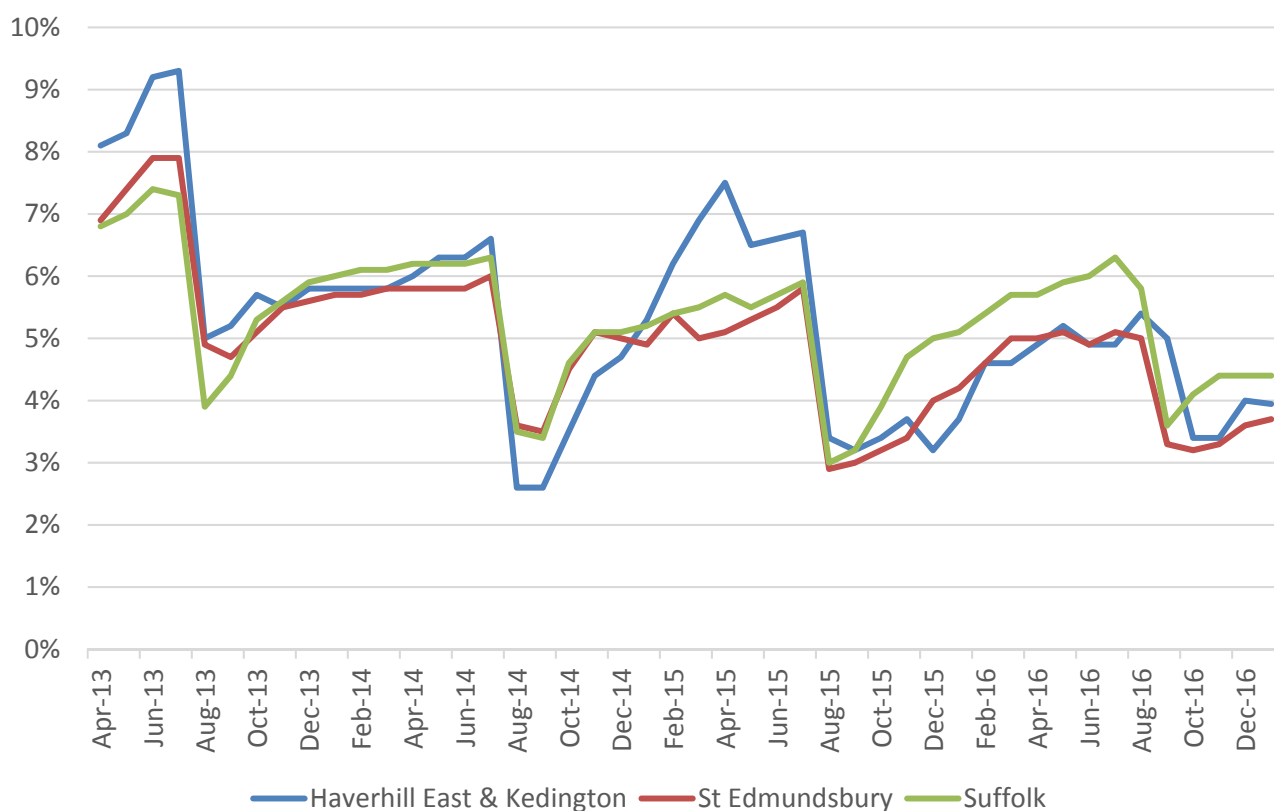
Average point score per student

In 2016 there was a change in the way pupil achievement is measured at the end of KS5 and so the trend over time should not therefore be considered. The relative level of attainment at schools in the Electoral Division versus the Suffolk and National averages can still be seen.



- A Level average point score among students at Samuel Ward Academy has been close to the national level for the past two years, but has always remained slightly below average
- In 2016, the average point score per student at the score was 30.83 compared to 32.1 nationally and 30.4 in Suffolk

NEET % (NOT IN EDUCATION, EMPLOYMENT OR TRAINING)

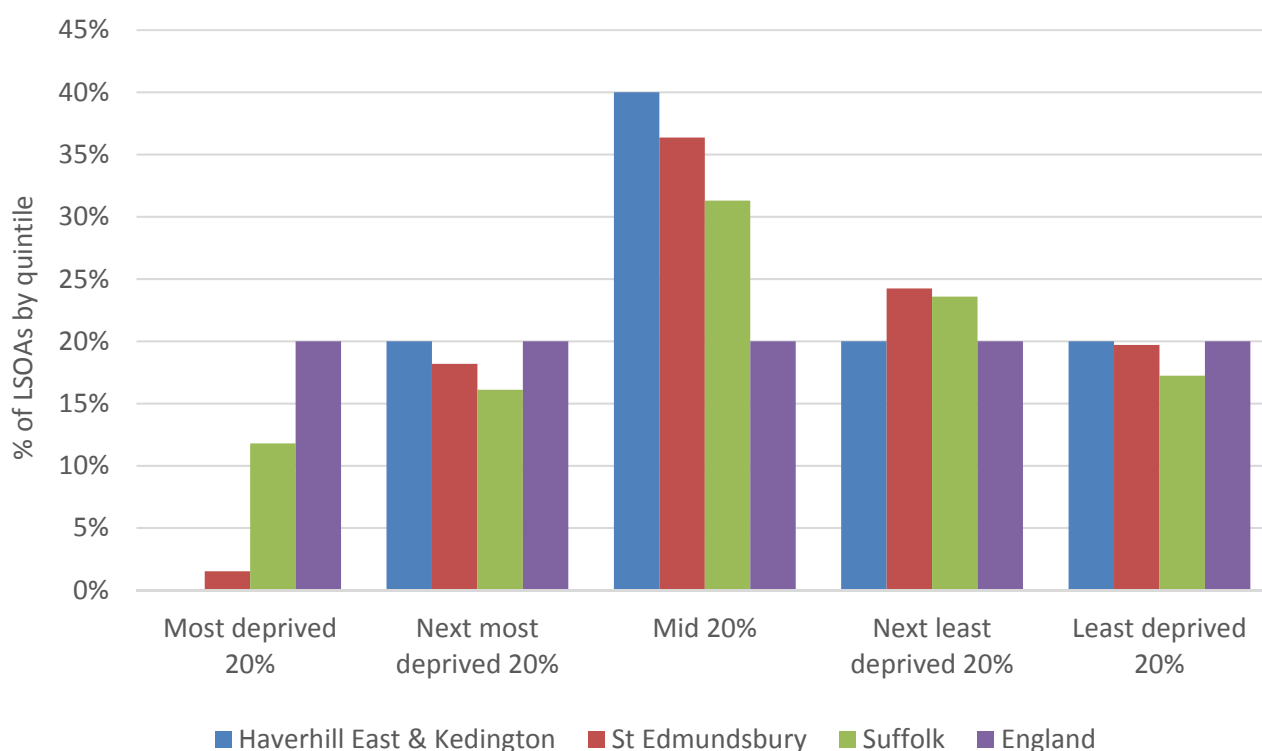


- In January 2017, 3.9% of 16-18 year olds were classified as NEET in Haverhill East and Kedington (where current activity is known)
- NEET levels in Haverhill East and Kedington are generally similar to the borough and national averages

INDEX OF MULTIPLE DEPRIVATION (IMD) 2015 (SEE MAP OVERLEAF)

The IMD combines a number of indicators, chosen to cover a range of economic, social and housing issues, into a single deprivation score for each small area in England. This allows each area to be ranked relative to one another according to their level of deprivation. Small areas (Lower Super Output Areas, average population 1,500) are most usually described as being in 1 of 5 quintile bands. The bottom quintile represents the 20% of areas that are the most deprived in the country; these are shaded red on the map. The top quintile represents the least deprived areas in the country, and is shaded green.

The Index is widely used to analyse patterns of deprivation, identify areas that would benefit from special initiatives or programmes and as a tool to determine eligibility for specific funding streams.

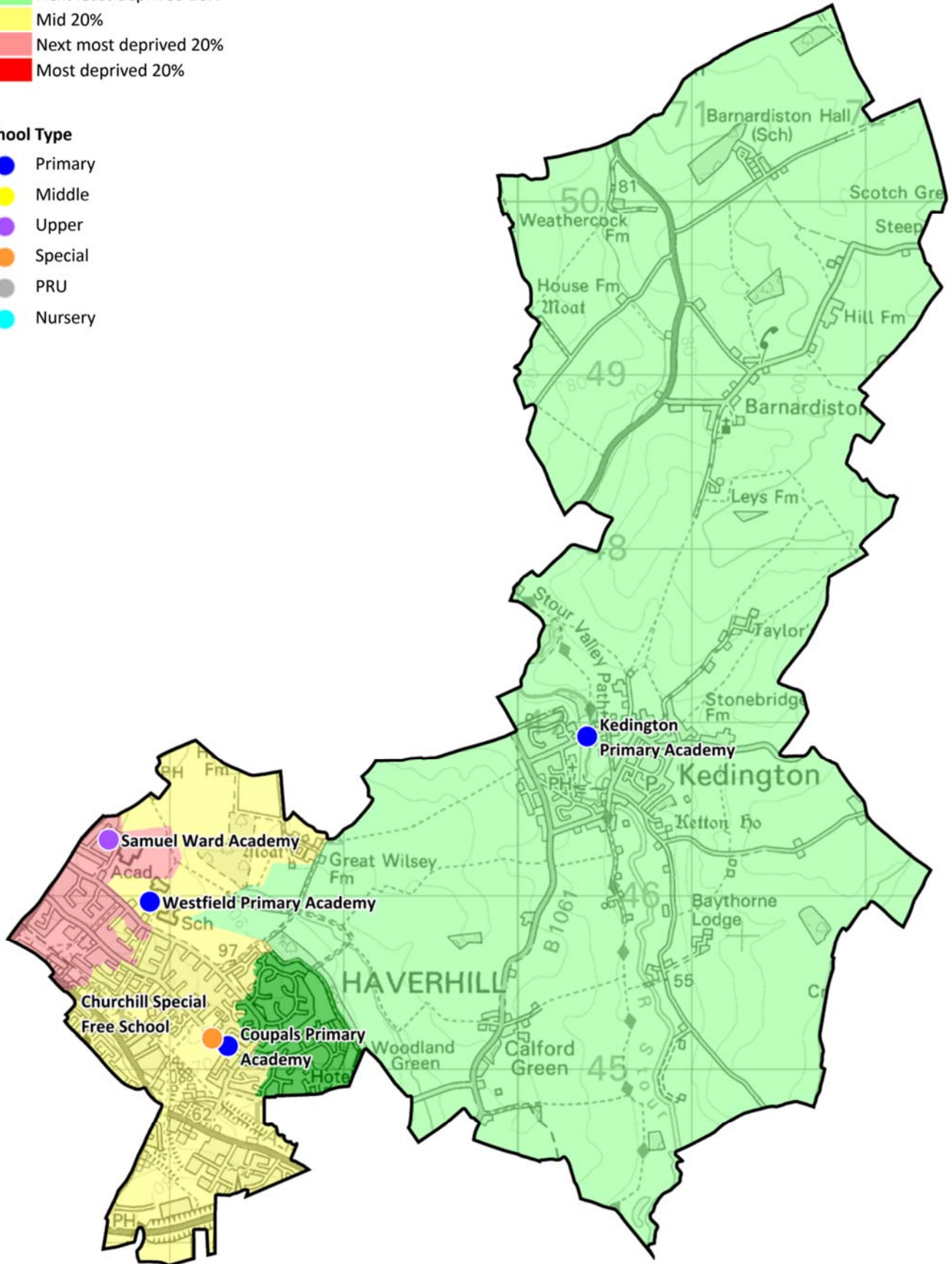


- The IMD 2015 shows that relative deprivation levels in Haverhill East and Kedington are quite varied, but no parts of the division are classified among the most deprived 20% nationally
- Of the five Lower Layer Super Output Areas (LSOA) comprising the division, one is ranked in the 20% least deprived LSOAs in the country, one is in the next least deprived quintile (20%), two are in the mid quintile, whilst one is in the next most deprived quintile

IMD 2015 quintile



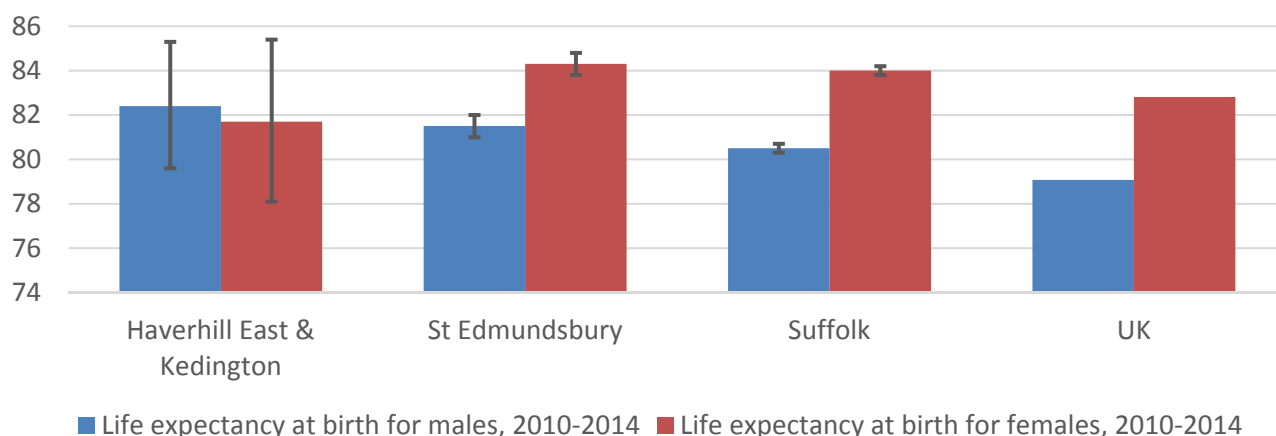
School Type



HEALTH

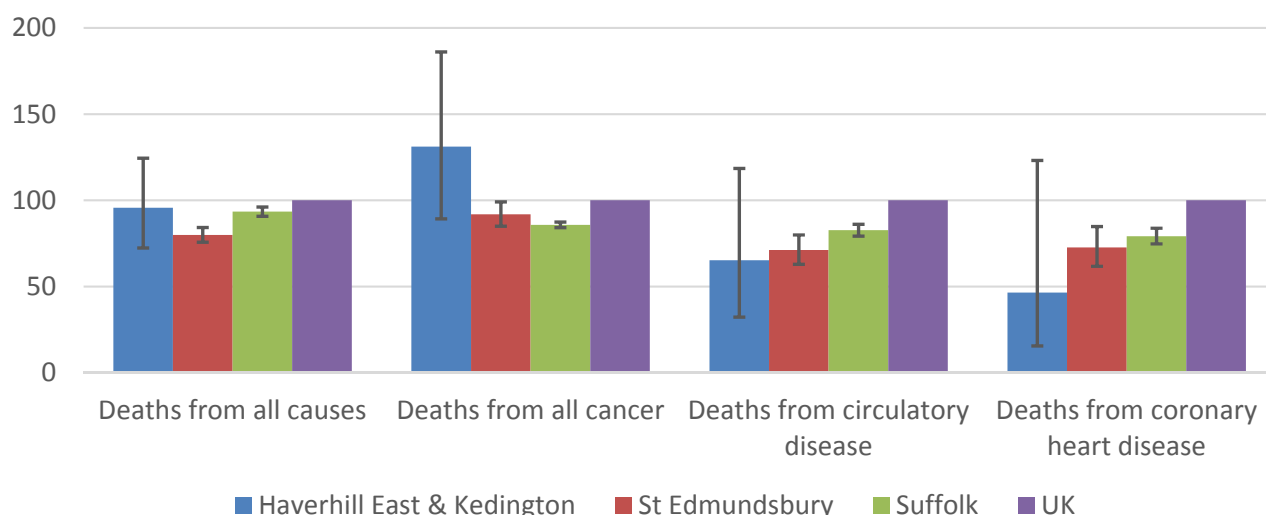
The local data used here is based on relatively small numbers. The confidence limits provide an indication of the reliability of the data. The 95% confidence intervals utilised on the chart provide a range within which there is 95% chance of the true result lying.

LIFE EXPECTANCY AT BIRTH



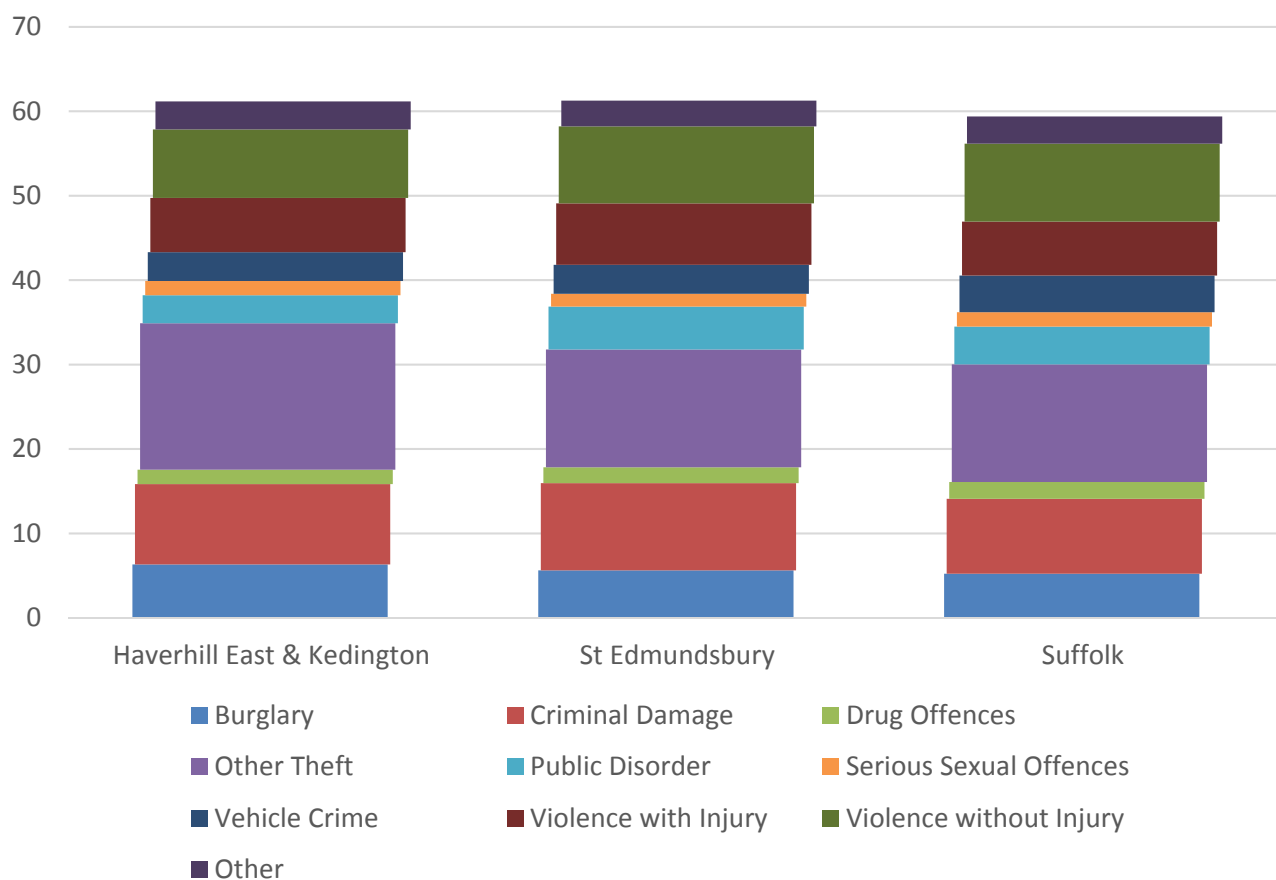
- Life expectancy estimates for Haverhill East and Kedington are unusual in that life expectancy for males is longer than that for females
- The value for male life expectancy is 82.4 while for females it is 81.7. The equivalent Suffolk values are 80.5 and 84 for males and females respectively

DEATHS, UNDER 75 YEARS, STANDARDISED MORTALITY RATIO



- The estimated ratio of early deaths due to cancer in Haverhill East and Kedington is higher than the Suffolk level
- The standardised mortality ratio data shown here means that for every 100 early deaths from all causes across the UK as a whole, there are an estimated 96 comparable deaths in the division
- Early deaths due to all causes are also relatively high in the division in the context of the St Edmundsbury borough and Suffolk estimates, though circulatory disease and coronary heart disease occur at a lower ratio than that seen across the borough, county and UK as a whole

CRIME & COMMUNITY SAFETY



- Haverhill East and Kedington shows a very similar rate of crime to the Suffolk average and borough averages, with 61 crimes recorded per 1,000 residents in the division in 2015 compared to 61 in St Edmundsbury and 59 across Suffolk as a whole
- “Other theft” is the most commonly recorded type of crime in the division and accounts for a noticeably higher proportion of crime compared to the borough and county as a whole
- The rate of public disorder offences recorded in the division is significantly lower than the comparator areas

ADDITIONAL INFORMATION

Parishes in Division

Barnardiston
Haverhill
Kedington

DATA SOURCES

Category	Indicator	Source
Demographic Profile	Quinary population table 2015	ONS 2015 mid-year population estimates
	Population pyramid 2015	ONS 2015 mid-year population estimates
	Ethnicity 2011	ONS 2011 Census
Economy	Employment by broad industrial sector 2015	ONS Business Register and Employment Survey via NOMIS
Labour market	Job Seekers Allowance Claimant Rate (% 16-64 population) 2014-2017	DWP via NOMIS
Education	School information and attainment 2014-2016	Suffolk County Council
	% 16-18 year olds NEET (Not in Employment, Education or Training) 2013-2017	Suffolk County Council
Deprivation	Index of Multiple Deprivation 2015	Department for Communities and Local Government
Health	Life expectancy at birth 2010-2014	Public Health England
Health	Standardised mortality ratio for deaths from all causes, cancer, circulatory disease and coronary heart disease, aged under 75 2010-2014. The standardised mortality ratio is the ratio of observed deaths in the study group to expected deaths in the general population.	Public Health England

For more data and information about Haverhill East and Kedington Electoral Division, see the Suffolk Observatory www.suffolkobservatory.info

