

# BOSMERE

## ELECTORAL DIVISION PROFILE 2017

This Division comprises Barking and Somersham, Needham Market and Ringshall wards

[www.suffolkobservatory.info](http://www.suffolkobservatory.info)



## **CONTENTS**

- Demographic Profile: Age & Ethnicity
- Economy and Labour Market
- Schools & NEET
- Index of Multiple Deprivation
- Health
- Crime & Community Safety
- Additional Information
- Data Sources

## ELECTORAL DIVISION PROFILES: AN INTRODUCTION

These profiles have been produced to support elected members, constituents and other interested parties in understanding the demographic, economic, social and educational profile of their neighbourhoods. We have used the latest data available at the time of publication.

Much more data is available from national and local sources than is captured here, but it is hoped that the profile will be a useful starting point for discussion, where local knowledge and experience can be used to flesh out and illuminate the information presented here.

The profile can be used to help look at some fundamental questions e.g.

- Does the age profile of the population match or differ from the national profile?
- Is there evidence of the ageing profile of the county in all the wards in the Division or just some?
- How diverse is the community in terms of ethnicity?
- What is the impact of deprivation on families and residents?
- Does there seem to be a link between deprivation and school performance?
- What is the breakdown of employment sectors in the area?
- Is it a relatively healthy area compared to the rest of the district or county?
- What sort of crime is prevalent in the community?

A vast amount of additional data is available on the **Suffolk Observatory**

[www.suffolkobservatory.info](http://www.suffolkobservatory.info)

The Suffolk Observatory is a free online resource that contains all Suffolk's vital statistics; it is the one-stop-shop for information and intelligence about Suffolk. Through data, reports and profiles, the Suffolk Observatory provides a comprehensive picture of the County. It is a great source for useful facts and figures that can be used for writing reports and presentations, informing strategic and business planning, preparing funding applications or supporting academic research. Data is presented around the key themes of education and skills, economy and employment, health and care, population, deprivation, housing, environment, transport and travel and crime. All areas of the county are covered, right down to district, ward and parish level, with information easily accessible in a variety of formats. You can also build your own reports by different themes and topics.

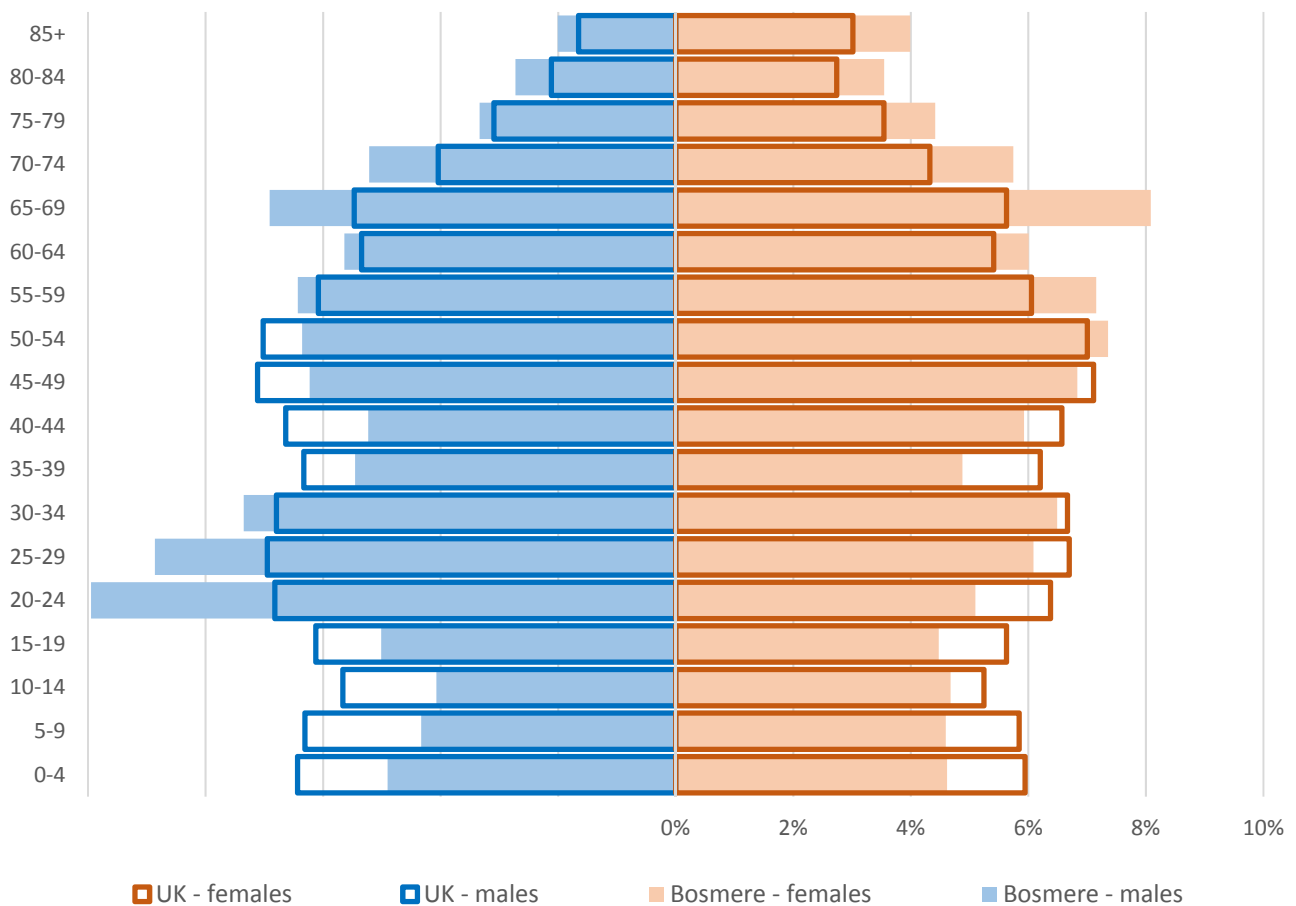
### Technical Notes:

1. Where Electoral Divisions do not exactly match ward boundaries, we have adopted a "best fit" approach to produce a dataset.
2. District, county and national level data is provided where possible to provide a context for comparisons.

## DEMOGRAPHIC PROFILE - AGE

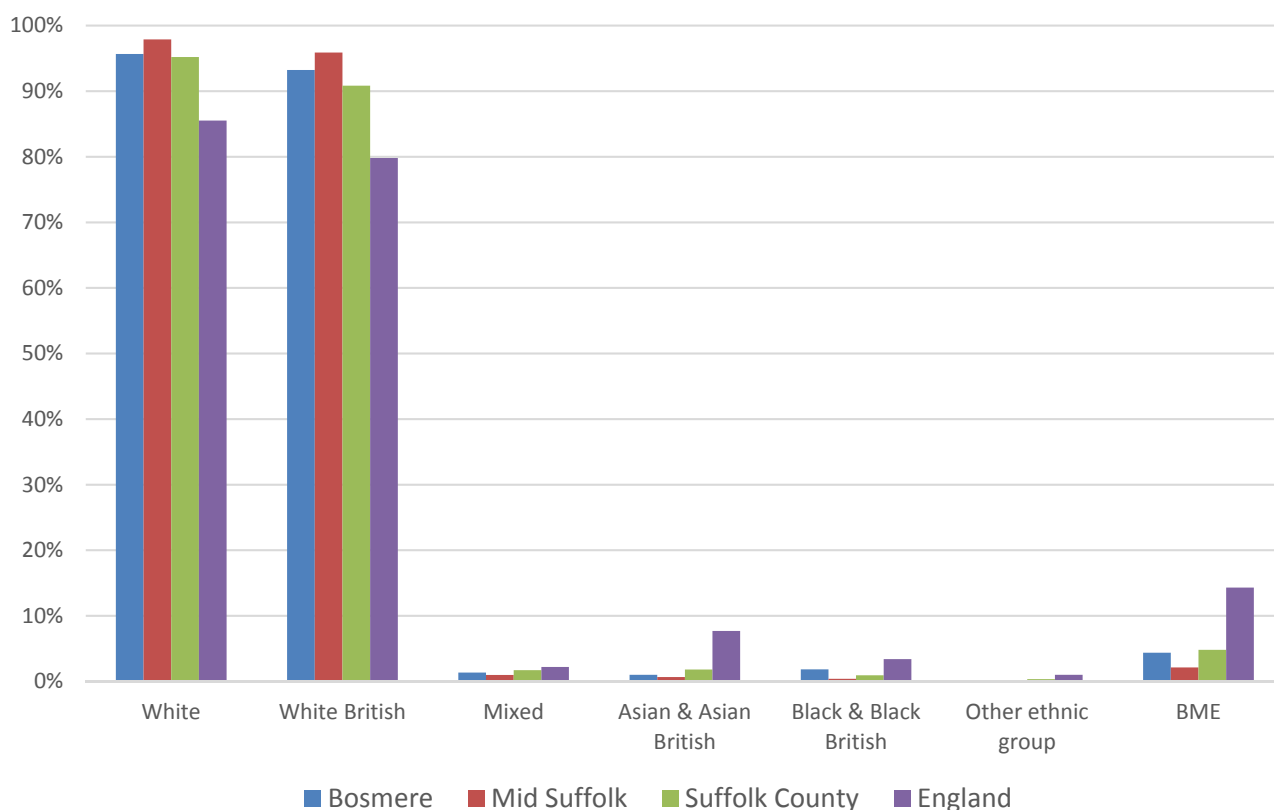
In mid-2015, the population of Bosmere stood at 10,388, an increase of 1.8% since the 2011 Census. The age structure of the component wards and the division as a whole is set out below.

	Bosmere Division	Barking and Somersham	Needham Market	Ringshall
<b>All Ages</b>	<b>10,388</b>	2,193	4,640	3,555
<b>0-4</b>	<b>495</b>	71	203	221
<b>5-9</b>	<b>463</b>	93	225	145
<b>10-14</b>	<b>453</b>	83	217	153
<b>15-19</b>	<b>494</b>	108	233	153
<b>20-24</b>	<b>793</b>	91	238	464
<b>25-29</b>	<b>783</b>	94	265	424
<b>30-34</b>	<b>721</b>	66	307	348
<b>35-39</b>	<b>538</b>	104	231	203
<b>40-44</b>	<b>578</b>	137	276	165
<b>45-49</b>	<b>677</b>	168	318	191
<b>50-54</b>	<b>710</b>	168	348	194
<b>55-59</b>	<b>704</b>	202	289	213
<b>60-64</b>	<b>604</b>	144	310	150
<b>65-69</b>	<b>776</b>	233	327	216
<b>70-74</b>	<b>568</b>	169	262	137
<b>75-79</b>	<b>400</b>	88	233	79
<b>80-84</b>	<b>324</b>	91	176	57
<b>85+</b>	<b>307</b>	83	182	42



- The age pyramid for Bosmere shows a higher than average proportion of males in the age group 20-24 and males and females over the age of 65
- The most common age group in Bosmere is 20-24 years old, followed by 25-29 year olds and 65-69 year olds
- There is a much lower than average number of females under the age of 44

## ETHNICITY

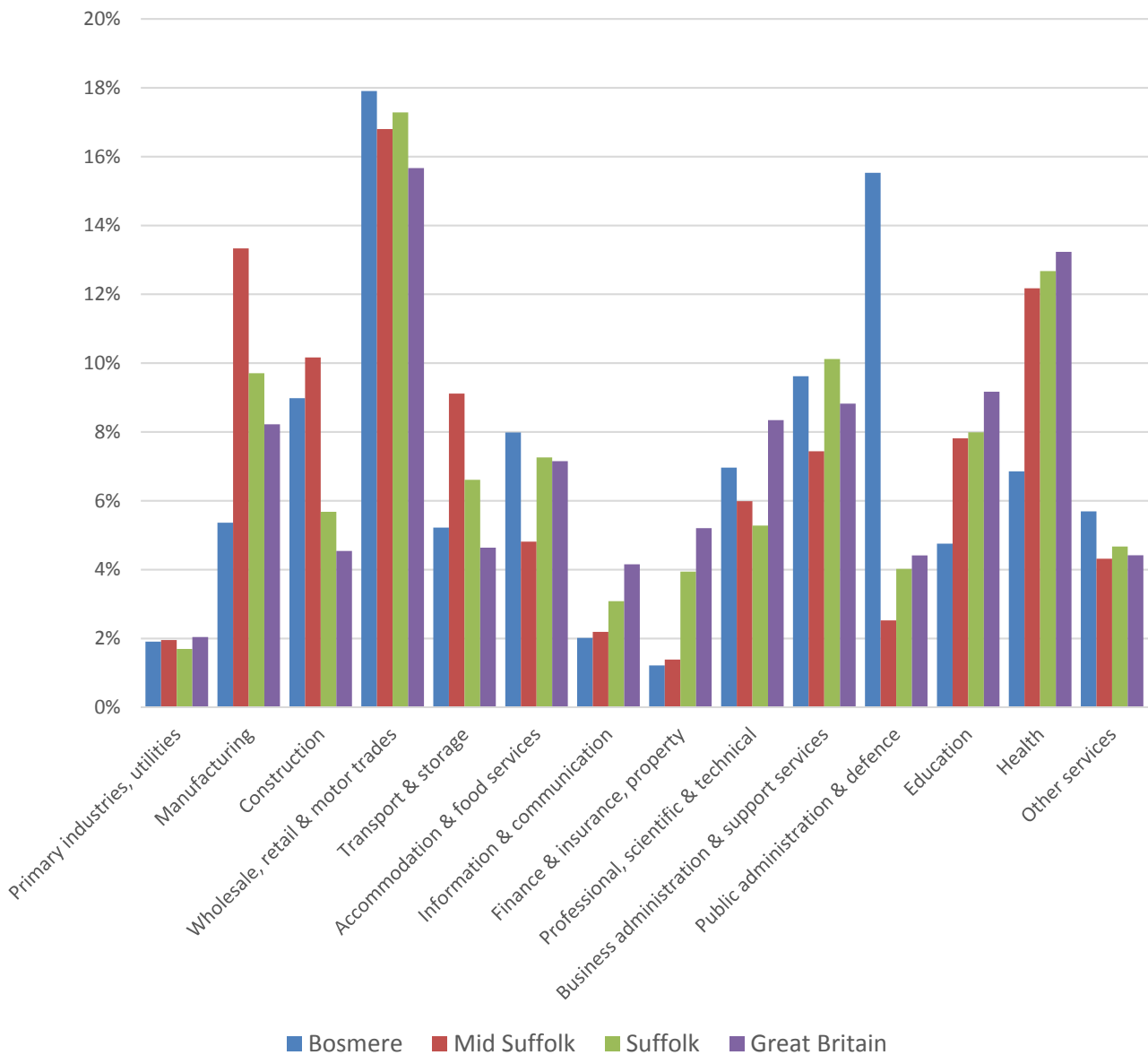


- According to the latest data (2011 Census), 95.6% (9,759) of the population of Bosmere are white, similar to the figure for Suffolk
- There are 444 (4.4%) people of black or minority ethnic origin in the division again, similar to the Suffolk figure and twice the average for Mid Suffolk
- Bosmere has a similar diversity profile to Mid Suffolk district and Suffolk as a whole

	All people	White		White British		Mixed		Asian and Asian British		Black and Black British		Other Ethnic Group		Black or Minority Ethnic Total	
	Count	Count	%	Count	%	Count	%	Count	%	Count	%	Count	%	Count	%
Bosmere	10,203	9,759	95.6	9,510	93.2	138	1.4	101	1.0	186	1.8	19	0.2	444	4.4
Mid Suffolk	96,731	94,667	97.9	92,747	95.9	953	1.0	647	0.7	371	0.4	93	0.1	2,064	2.1
Suffolk	728,163	693,195	95.2	661,458	90.8	12,472	1.7	13,131	1.8	6,854	0.9	2,511	0.3	34,968	4.8
England & Wales			86.0		80.5		2.2		6.7		2.8		0.4		12.1

# ECONOMY

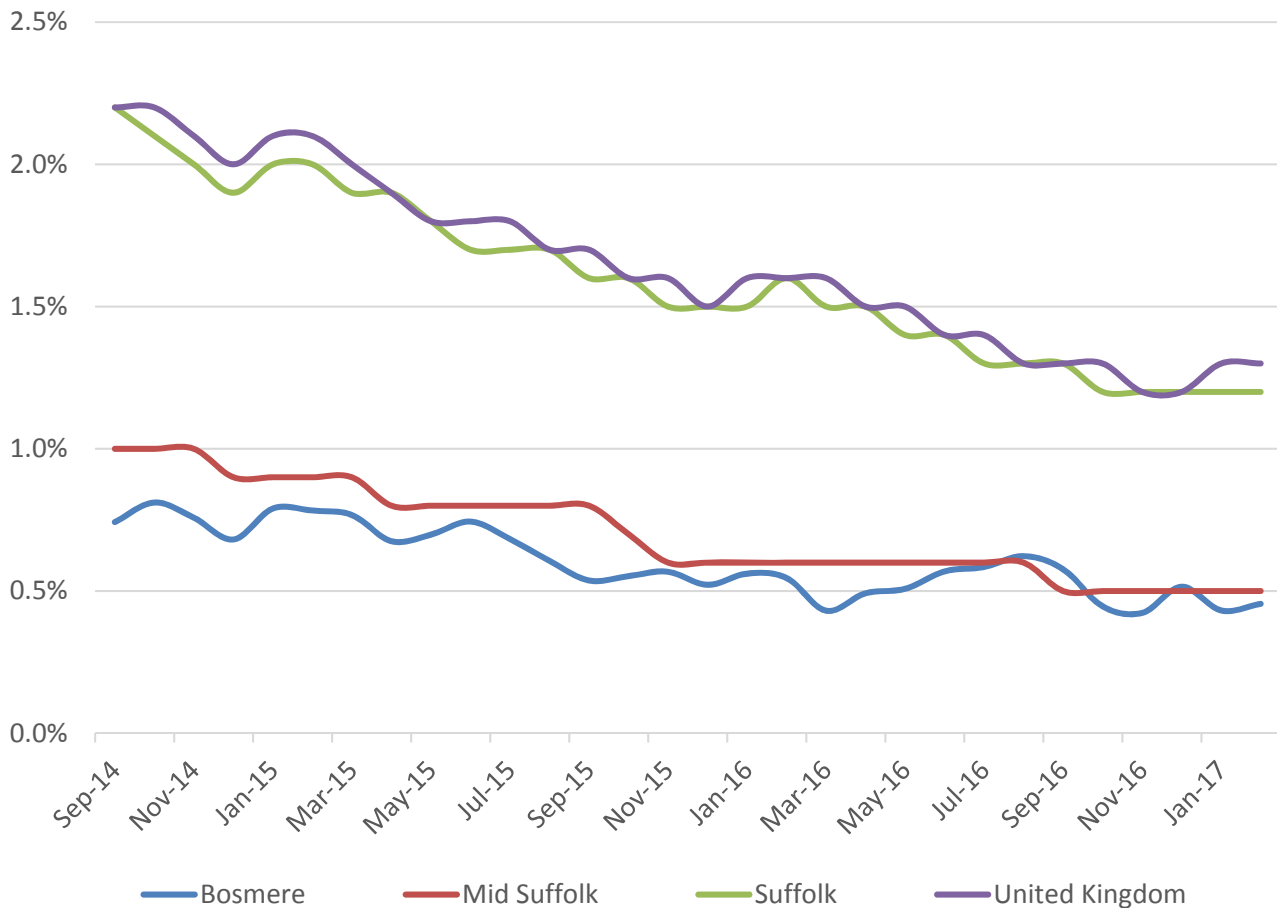
There are 3,700 people employed in Bosmere.



- The key employment sectors in Bosmere are wholesale, retail and motor trades, and public administration and defence
- These sectors provide around one in three jobs in the division
- Public administration and defence is particularly important as the proportion of those in Bosmere employed in this sectors is much higher than the national average

# LABOUR MARKET

## JOB SEEKERS ALLOWANCE CLAIMANT RATE



- Bosmere has seen a steady reduction in the rate of claimants over the last few years, aside from a slight increase in the second half of 2016
- Claimant unemployment levels in the division are consistently below those of the county and nationally and generally below the rate for Mid Suffolk
- In percentage terms, 0.5% of the working age population are claiming JSA in February 2017. This is same as the district average and below the county and national levels



# SCHOOLS

## SCHOOL INFORMATION

### Schools in the Division

		Average cohort size at:		Latest Ofsted	Latest Ofsted Date
Name	Phase	Foundation Stage (age 5)	KS2 (age 11)		
Bosmere CP School	Primary	48	15	Good	04/12/2013
Ringshall School	Primary	22	4	Requires Improvement	08/03/2017
Somersham Primary School	Primary	15	11	Good	01/05/2013

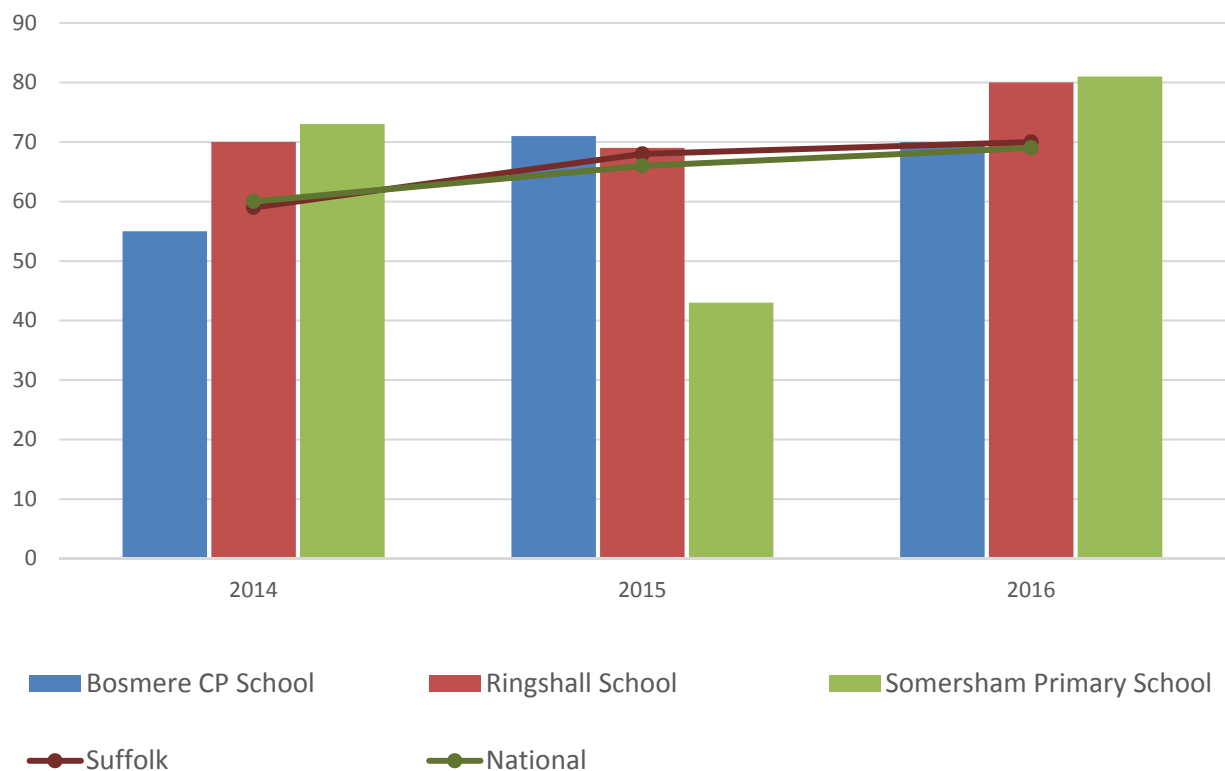
### School Catchment overlaps with the Division

		Average cohort size at				Latest Ofsted	Latest Ofsted Date
Name	Phase	Foundation Stage (age 5)	KS2 (age 11)	KS4 (age 16)	KS5 (age 18)		
Bildeston Primary School	Primary	16	13			Good	13/02/2013
Claydon Primary School	Primary	52	57			Good	03/07/2014
Combs Ford Primary School	Primary	54	19			Good	20/04/2016
Claydon High School	Upper		9	134		Good	18/07/2014
Hadleigh High School	Upper			156		Good	20/10/2015
Stowmarket High School	Upper			208	82	Requires Improvement	23/09/2015

## SCHOOL ATTAINMENT

### Foundation Stage Profile (reception)

% pupils achieving Good Level of Development

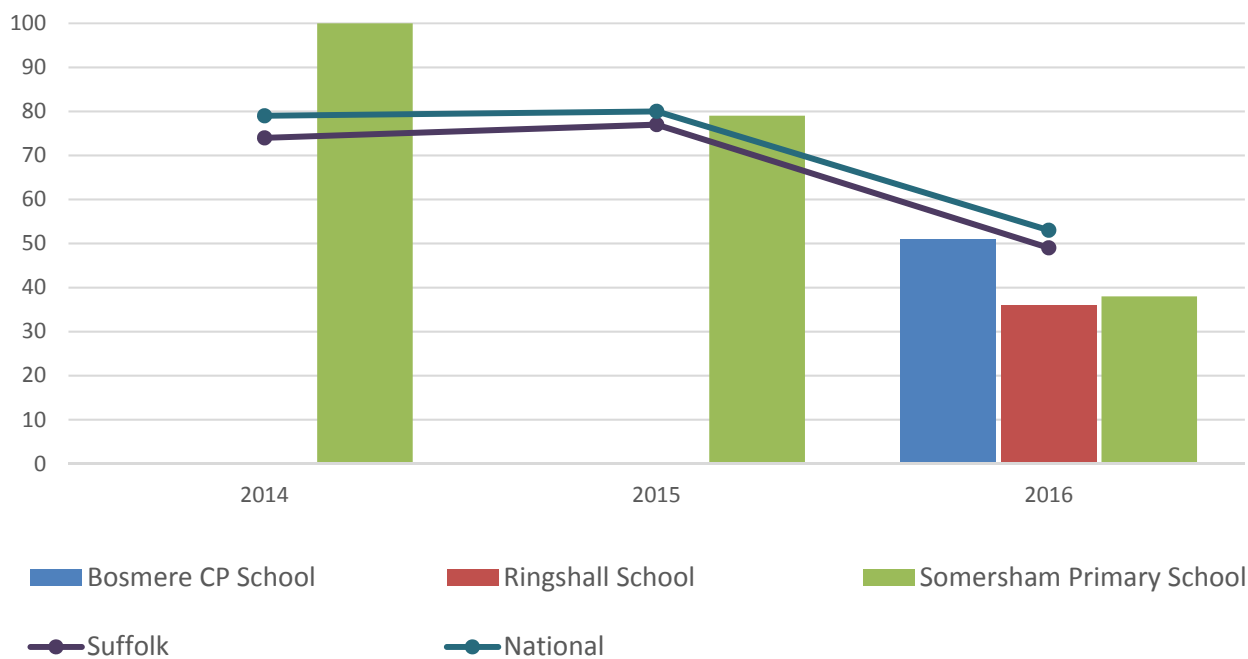


- Foundation Stage attainment at schools in Bosmere has varied over the last three years
- Only one school, Ringshall Primary, has had attainment levels consistently at or above the county and national levels in each of the last three years
- Attainment at Bosmere CP School has been good in the last two years following below average attainment in 2014
- Somersham Primary's attainment has seen the greatest variation; above county and national averages in 2014, well below both in 2015, then above both again in 2016

### Key Stage 2 (age 11)

Pupil Achievement in all three subjects, Reading, Writing and Mathematics  
(2014–2015 as % Level 4 or better & 2016 % Expected Level or better)

In July 2016, there was a change in the way pupil achievement is measured at the end of KS2. Prior to 2016, pupils received National Curriculum Level grades for English and Maths, with L4 being the expected level at the end of Key Stage 2. In 2016 the measure scaled score and shows whether or not a pupil has achieved the national standard for that subject

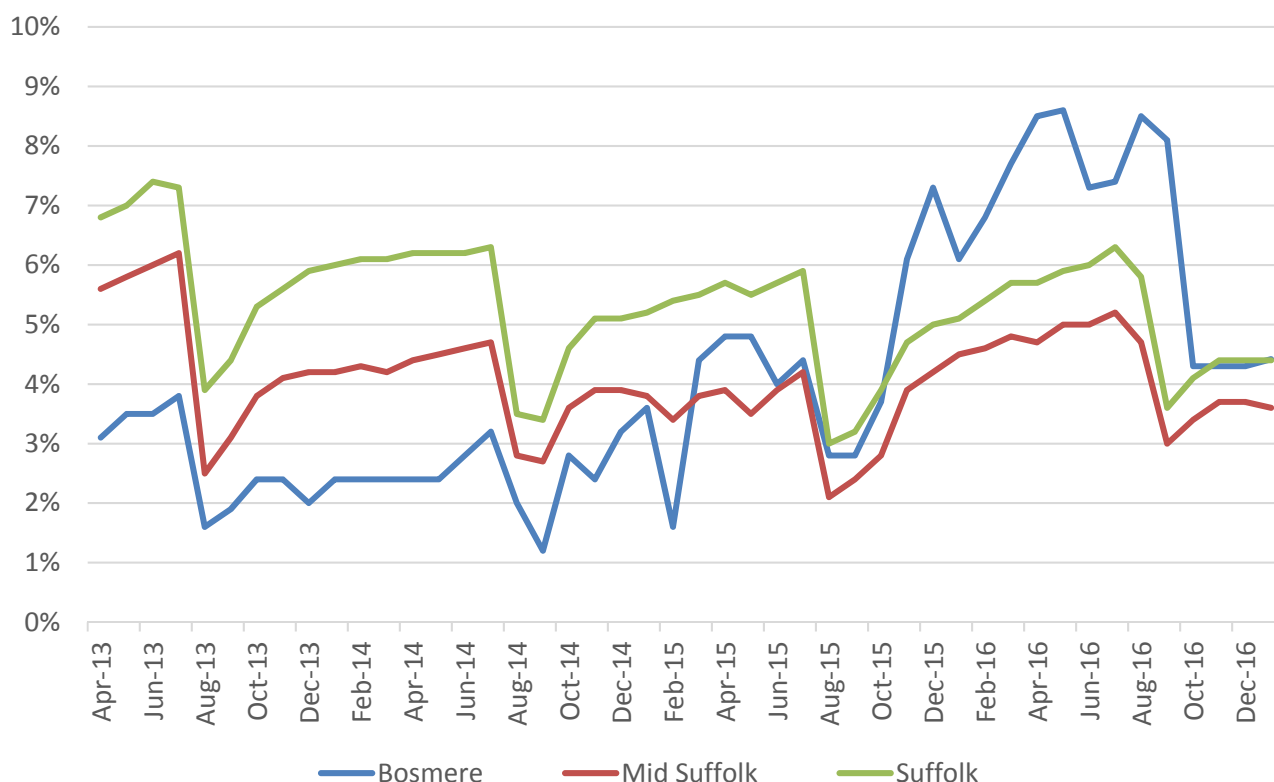


- No data is available for Bosmere and Ringshall in 2014 and 2015
- Attainment for Somersham Primary was at or above national and county levels in 2014 and 2015, though significantly below average following changes to pupil achievement measurement in 2016
- Both Ringshall and Bosmere CP Schools also saw KS2 attainment below the national average in 2016, though the latter saw better results than the Suffolk average

### GCSE (Key Stage 4) (age 16)

There are no upper schools located within the Bosmere division

## NEET % (NOT IN EDUCATION, EMPLOYMENT OR TRAINING)

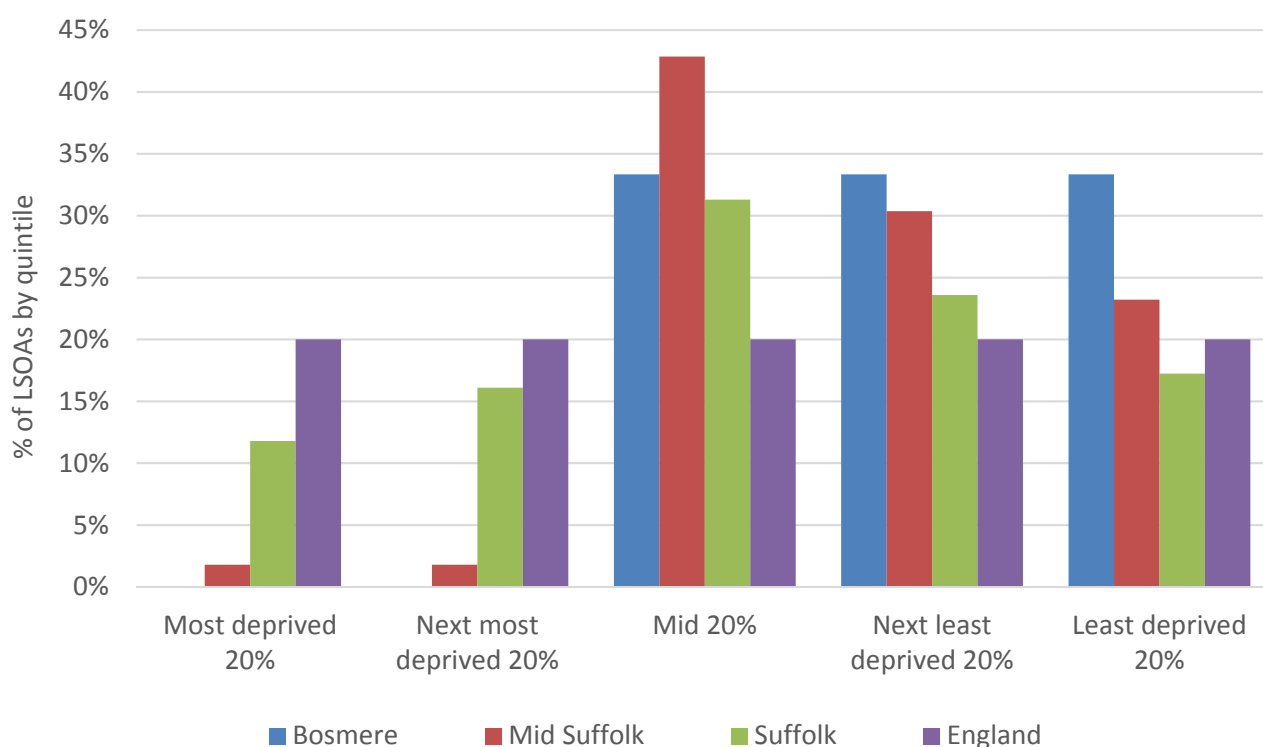


- In January 2017, 4.4% of 16-18 year olds in Bosmere were classified as NEET (where current activity is known)
- NEET levels in Bosmere had been below the district and county averages until February 2015 when they rose above the rate for Mid Suffolk, where they have remained since
- Currently, the rate in Bosmere is similar to Suffolk, but above the district figure

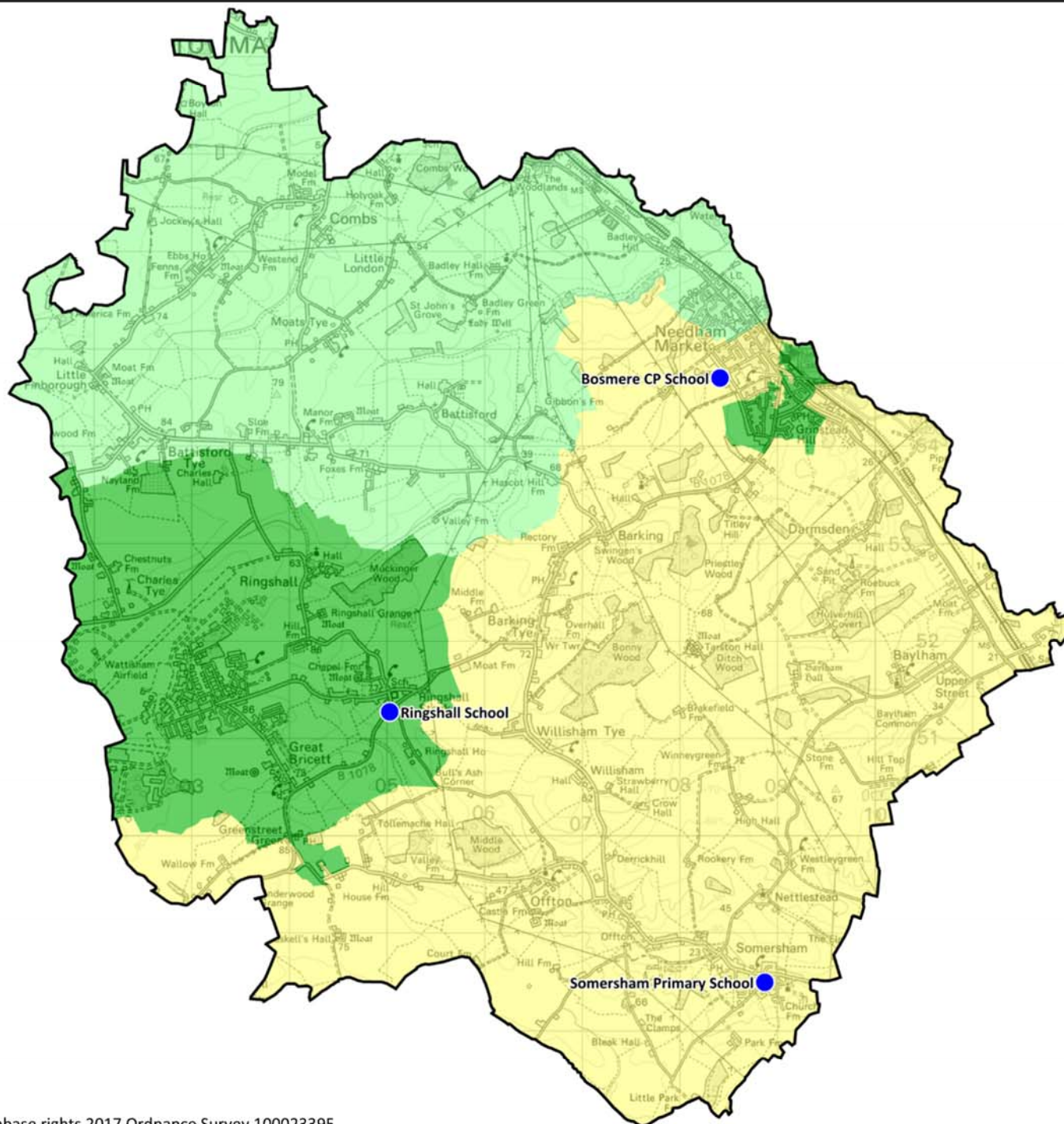
## INDEX OF MULTIPLE DEPRIVATION (IMD) 2015 (SEE MAP OVERLEAF)

The IMD combines a number of indicators, chosen to cover a range of economic, social and housing issues, into a single deprivation score for each small area in England. This allows each area to be ranked relative to one another according to their level of deprivation. Small areas (Lower Super Output Areas, average population 1,500) are most usually described as being in 1 of 5 quintile bands. The bottom quintile represents the 20% of areas that are the most deprived in the country; these are shaded red on the map. The top quintile represents the least deprived areas in the country, and is shaded green.

The Index is widely used to analyse patterns of deprivation, identify areas that would benefit from special initiatives or programmes and as a tool to determine eligibility for specific funding streams.



- The IMD 2015 shows that deprivation levels in Bosmere are fairly low and concentrated within the least deprived 60%
- There are no parts in the division that fall into the most or second most deprived quintiles
- The proportion of those in the top two quintiles exceeds the averages for the district, county and England
- Of the six Lower Super Output Areas in Bosmere, two fall into the mid 20%, two are in the next least deprived quintile and the remaining two are in the least deprived quintile



#### IMD 2015 quintile

- Least deprived 20%
- Next least deprived 20%
- Mid 20%
- Next most deprived 20%
- Most deprived 20%

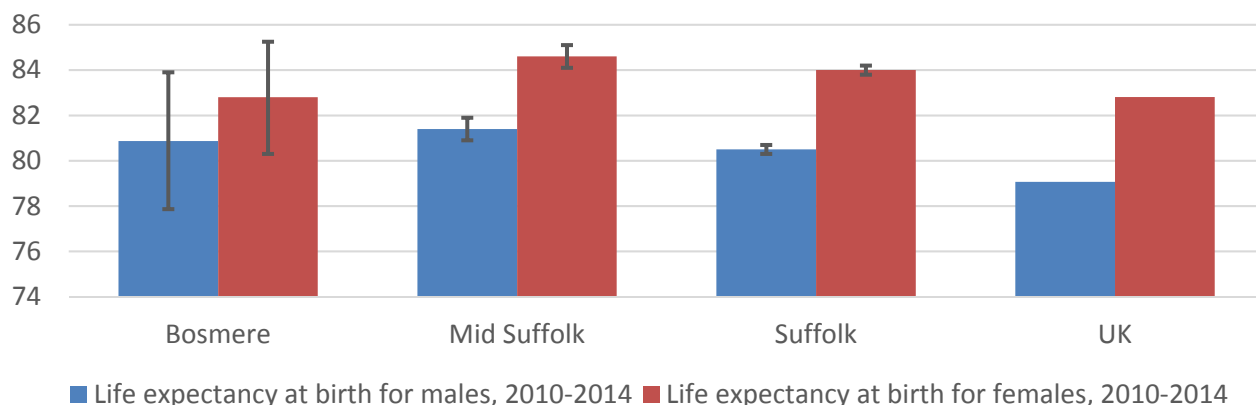
#### School Type

- Primary
- Middle
- Upper
- Special
- PRU
- Nursery

# HEALTH

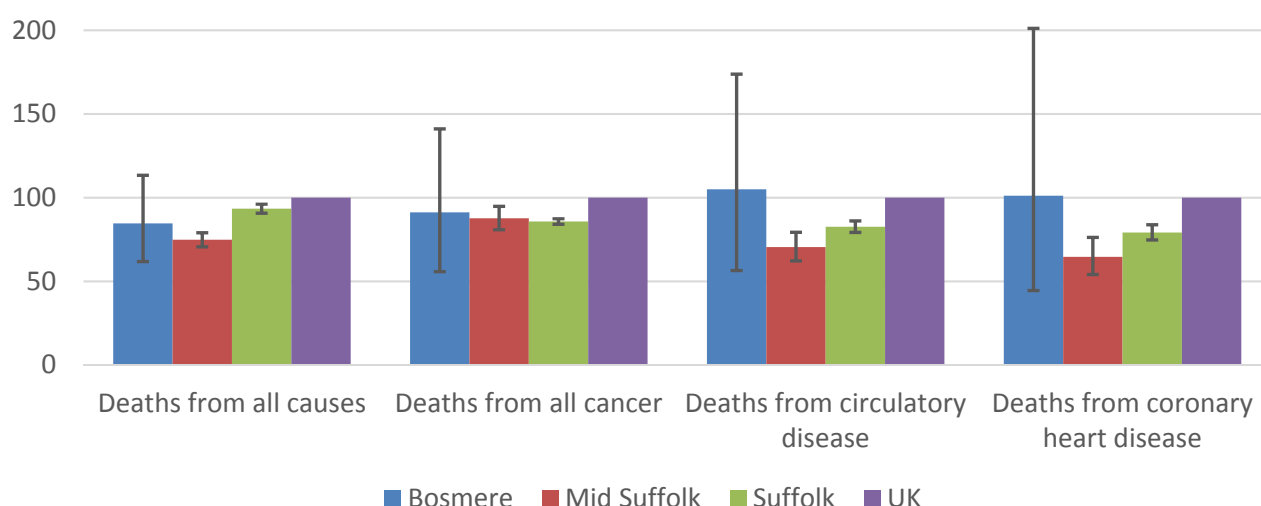
The local data used here is based on relatively small numbers. The confidence limits provide an indication of the reliability of the data. The 95% confidence intervals utilised on the chart provide a range within which there is 95% chance of the true result lying.

## LIFE EXPECTANCY AT BIRTH



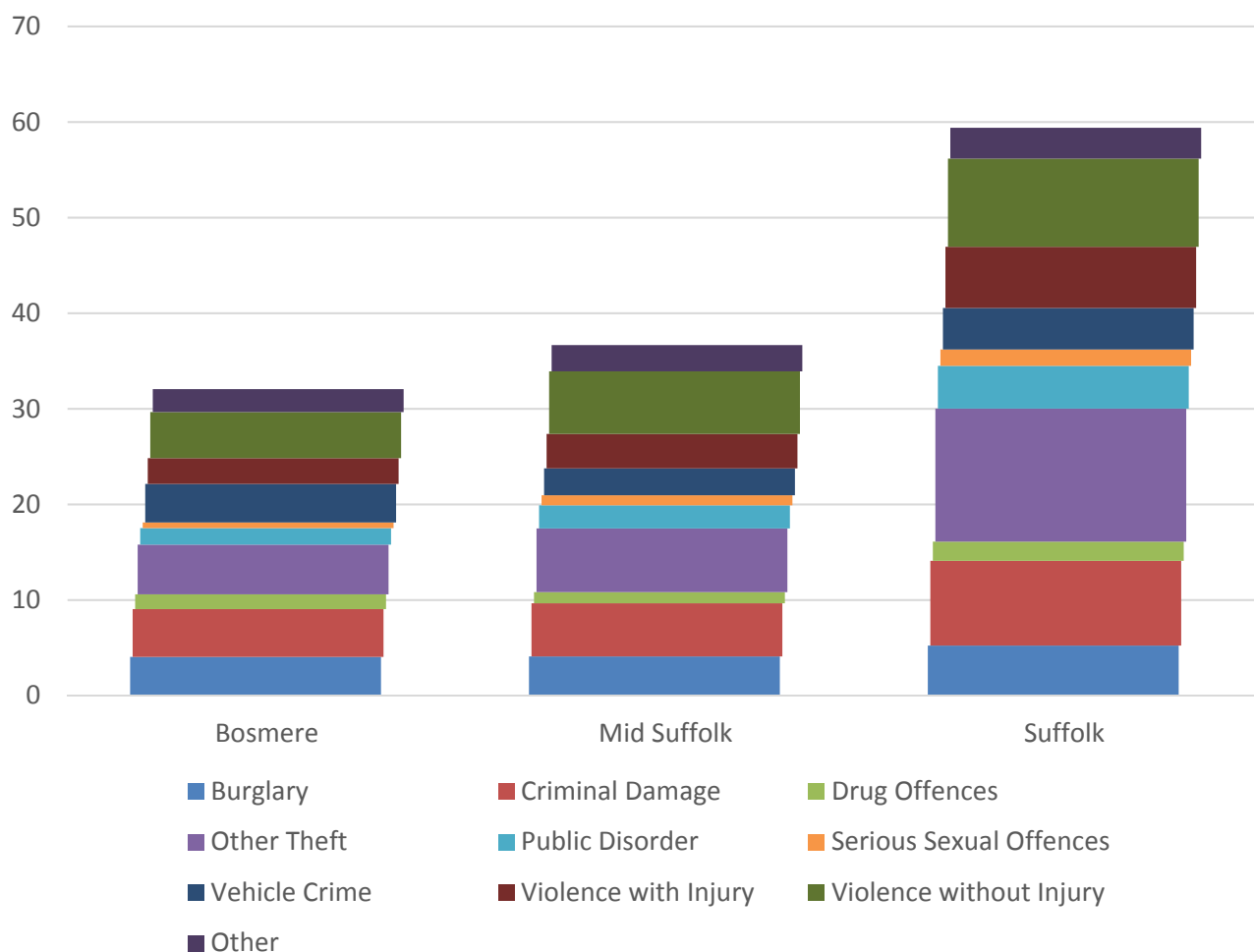
- Male life expectancy at birth in Bosmere is similar to the average for the county, lower than in Mid Suffolk but higher than for the country as a whole
- Conversely, life expectancy at birth for females is lower than the average for the district and county but similar to the national average
- Estimated male life expectancy at birth in Bosmere at 80.9 years is almost two years below the life expectancy at birth for females, at 82.8 years

## DEATHS, UNDER 75 YEARS, STANDARDISED MORTALITY RATIO



- The rate of deaths from all causes in those aged under 75 in Bosmere is lower than the national and county averages, but above the average for Mid Suffolk
- The standardised mortality ratio data shown here means that for every 100 early deaths from all causes across the UK as a whole, there are an estimated 85 comparable deaths in Bosmere
- Early deaths from circulatory and coronary heart diseases are both similar to national figures, although higher than in Mid Suffolk and Suffolk

## CRIME & COMMUNITY SAFETY



- The overall crime rate in Bosmere is lower than for Mid Suffolk and around half the level for the county
- In 2015, there were around 32 recorded crimes per 1,000 residents in Bosmere, compared to 37 in Mid Suffolk and 59 countywide
- The most commonly recorded type crime in Bosmere is “other theft”, followed by criminal damage and violence without injury

## ADDITIONAL INFORMATION

### Parishes in Division

Badley	Little Finborough
Barking	Needham Market
Battisford	Nettlestead
Baylham	Offton
Combs	Ringshall
Darmsden	Somersham
Great Bricett	Willisham



## DATA SOURCES

Category	Indicator	Source
Demographic Profile	Quinary population table 2015	ONS 2015 mid-year population estimates
	Population pyramid 2015	ONS 2015 mid-year population estimates
	Ethnicity 2011	ONS 2011 Census
Economy	Employment by broad industrial sector 2015	ONS Business Register and Employment Survey via NOMIS
Labour market	Job Seekers Allowance Claimant Rate (% 16-64 population) 2014-2017	DWP via NOMIS
Education	School information and attainment 2014-2016	Suffolk County Council
	% 16-18 year olds NEET (Not in Employment, Education or Training) 2013-2017	Suffolk County Council
Deprivation	Index of Multiple Deprivation 2015	Department for Communities and Local Government
Health	Life expectancy at birth 2010-2014	Public Health England
Health	Standardised mortality ratio for deaths from all causes, cancer, circulatory disease and coronary heart disease, aged under 75 2010-2014. The standardised mortality ratio is the ratio of observed deaths in the study group to expected deaths in the general population.	Public Health England
Community Safety	Recorded crime rate per 1,000 resident population 2015	Suffolk Police

For more data and information about Bosmere Electoral Division, see the Suffolk Observatory [www.suffolkobservatory.info](http://www.suffolkobservatory.info)

