

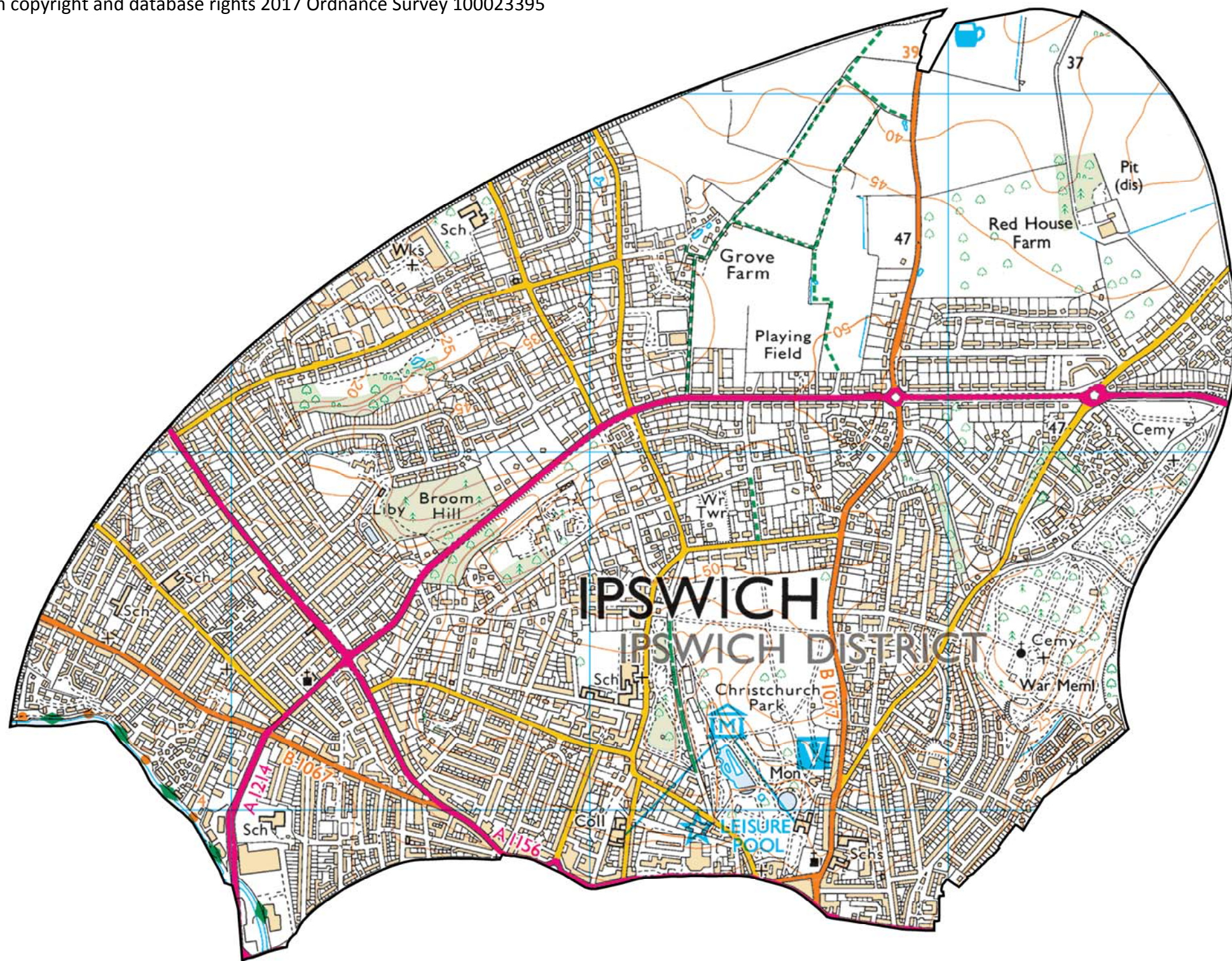
# ST MARGARET'S & WESTGATE

## ELECTORAL DIVISION PROFILE 2017

This Division comprises St Margaret's and Westgate wards in their entirety plus part of Castle Hill ward

[www.suffolkobservatory.info](http://www.suffolkobservatory.info)





## **CONTENTS**

- Demographic Profile: Age & Ethnicity
- Economy and Labour Market
- Schools & NEET
- Index of Multiple Deprivation
- Health
- Crime & Community Safety
- Additional Information
- Data Sources



## ELECTORAL DIVISION PROFILES: AN INTRODUCTION

These profiles have been produced to support elected members, constituents and other interested parties in understanding the demographic, economic, social and educational profile of their neighbourhoods. We have used the latest data available at the time of publication.

Much more data is available from national and local sources than is captured here, but it is hoped that the profile will be a useful starting point for discussion, where local knowledge and experience can be used to flesh out and illuminate the information presented here.

The profile can be used to help look at some fundamental questions e.g.

- Does the age profile of the population match or differ from the national profile?
- Is there evidence of the ageing profile of the county in all the wards in the Division or just some?
- How diverse is the community in terms of ethnicity?
- What is the impact of deprivation on families and residents?
- Does there seem to be a link between deprivation and school performance?
- What is the breakdown of employment sectors in the area?
- Is it a relatively healthy area compared to the rest of the district or county?
- What sort of crime is prevalent in the community?

A vast amount of additional data is available on the **Suffolk Observatory**

[www.suffolkobservatory.info](http://www.suffolkobservatory.info)

The Suffolk Observatory is a free online resource that contains all Suffolk's vital statistics; it is the one-stop-shop for information and intelligence about Suffolk. Through data, reports and profiles, the Suffolk Observatory provides a comprehensive picture of the County. It is a great source for useful facts and figures that can be used for writing reports and presentations, informing strategic and business planning, preparing funding applications or supporting academic research. Data is presented around the key themes of education and skills, economy and employment, health and care, population, deprivation, housing, environment, transport and travel and crime. All areas of the county are covered, right down to district, ward and parish level, with information easily accessible in a variety of formats. You can also build your own reports by different themes and topics.

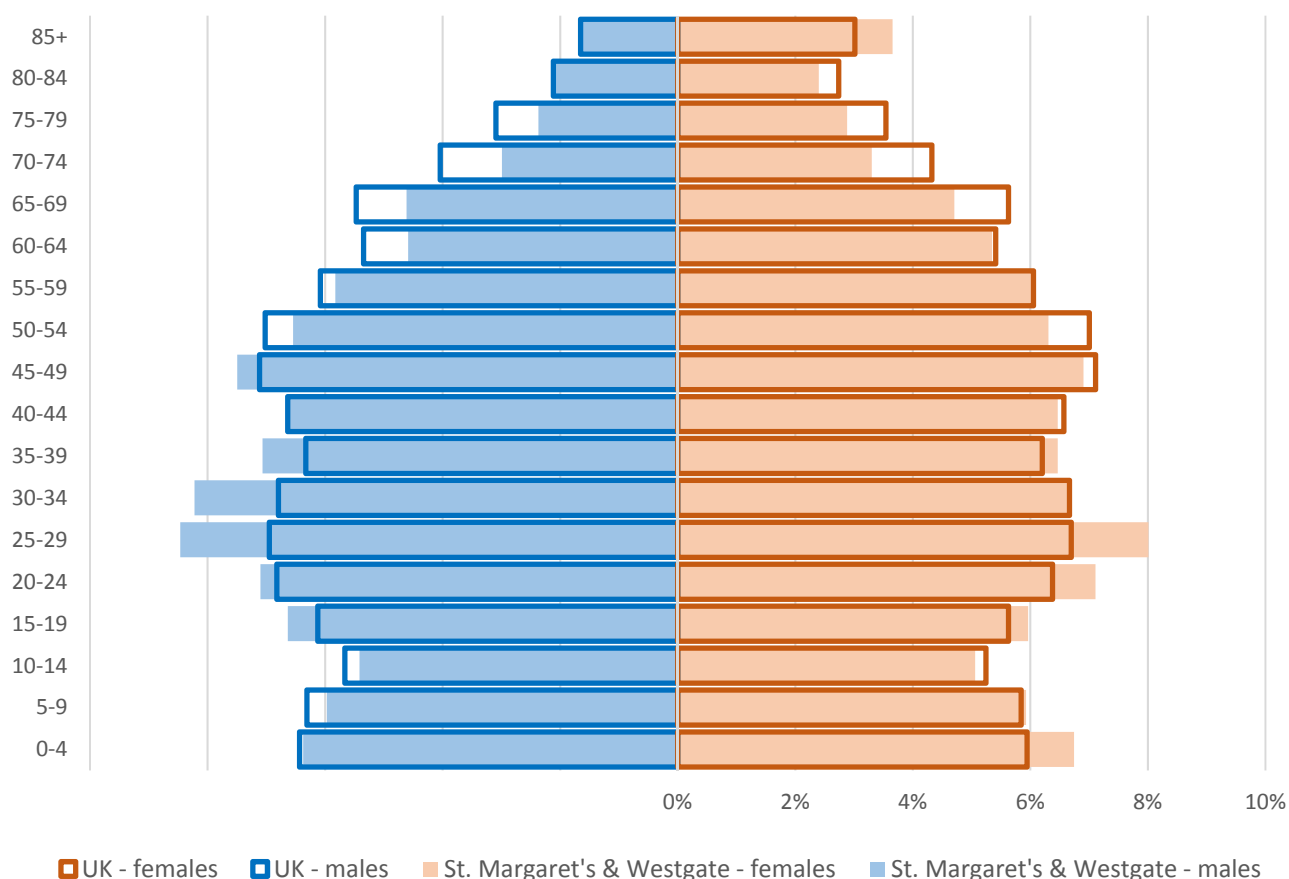
### Technical Notes:

1. Where Electoral Divisions do not exactly match ward boundaries, we have adopted a "best fit" approach to produce a dataset.
2. District, county and national level data is provided where possible to provide a context for comparisons.

## DEMOGRAPHIC PROFILE - AGE

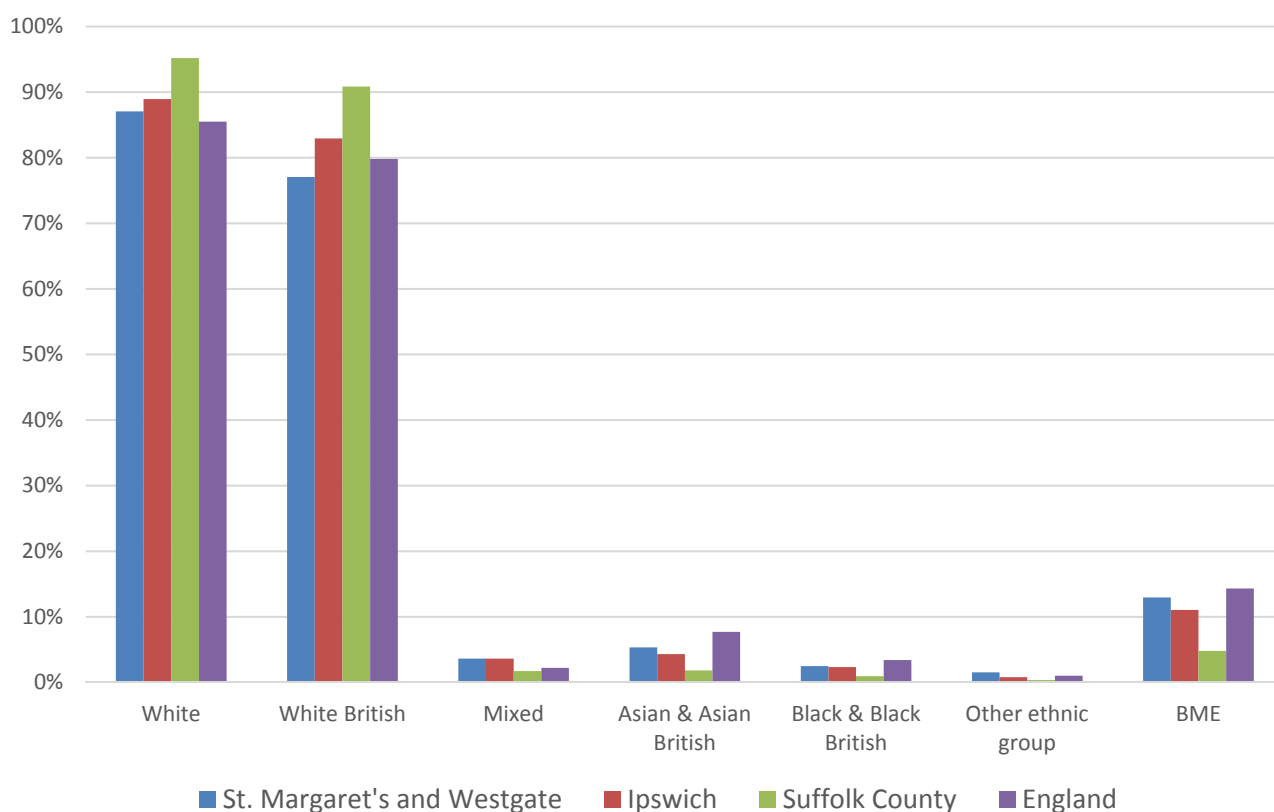
In mid-2015, the population of St Margaret's and Westgate stood at 21,888, an increase of 4.7% since the 2011 Census. The age structure of the component wards and the division as a whole is set out below (a small part of Castle ward also falls within St Margaret's and Westgate Division but is not included here).

	St. Margaret's and Westgate Division	St Margaret's	Westgate
<b>All Ages</b>	<b>21,888</b>	<b>8,059</b>	<b>10,632</b>
<b>0-4</b>	<b>1,435</b>	<b>465</b>	<b>817</b>
<b>5-9</b>	<b>1,302</b>	<b>492</b>	<b>675</b>
<b>10-14</b>	<b>1,147</b>	<b>469</b>	<b>504</b>
<b>15-19</b>	<b>1,380</b>	<b>502</b>	<b>713</b>
<b>20-24</b>	<b>1,555</b>	<b>399</b>	<b>994</b>
<b>25-29</b>	<b>1,804</b>	<b>455</b>	<b>1,184</b>
<b>30-34</b>	<b>1,635</b>	<b>440</b>	<b>1,060</b>
<b>35-39</b>	<b>1,482</b>	<b>453</b>	<b>847</b>
<b>40-44</b>	<b>1,433</b>	<b>523</b>	<b>707</b>
<b>45-49</b>	<b>1,577</b>	<b>607</b>	<b>716</b>
<b>50-54</b>	<b>1,407</b>	<b>570</b>	<b>595</b>
<b>55-59</b>	<b>1,298</b>	<b>561</b>	<b>497</b>
<b>60-64</b>	<b>1,086</b>	<b>470</b>	<b>394</b>
<b>65-69</b>	<b>1,020</b>	<b>484</b>	<b>323</b>
<b>70-74</b>	<b>688</b>	<b>313</b>	<b>214</b>
<b>75-79</b>	<b>574</b>	<b>279</b>	<b>134</b>
<b>80-84</b>	<b>489</b>	<b>268</b>	<b>114</b>
<b>85+</b>	<b>576</b>	<b>309</b>	<b>144</b>



- The age pyramid for St Margaret's and Westgate shows a higher than average proportion of people aged 15 to 39
- The commonest age group in St Margaret's and Westgate is 25-29 year olds, followed by 30-34 year olds
- There are much lower than average numbers of people in some of the older age groups, particularly those aged between 65 and 79 years

## ETHNICITY

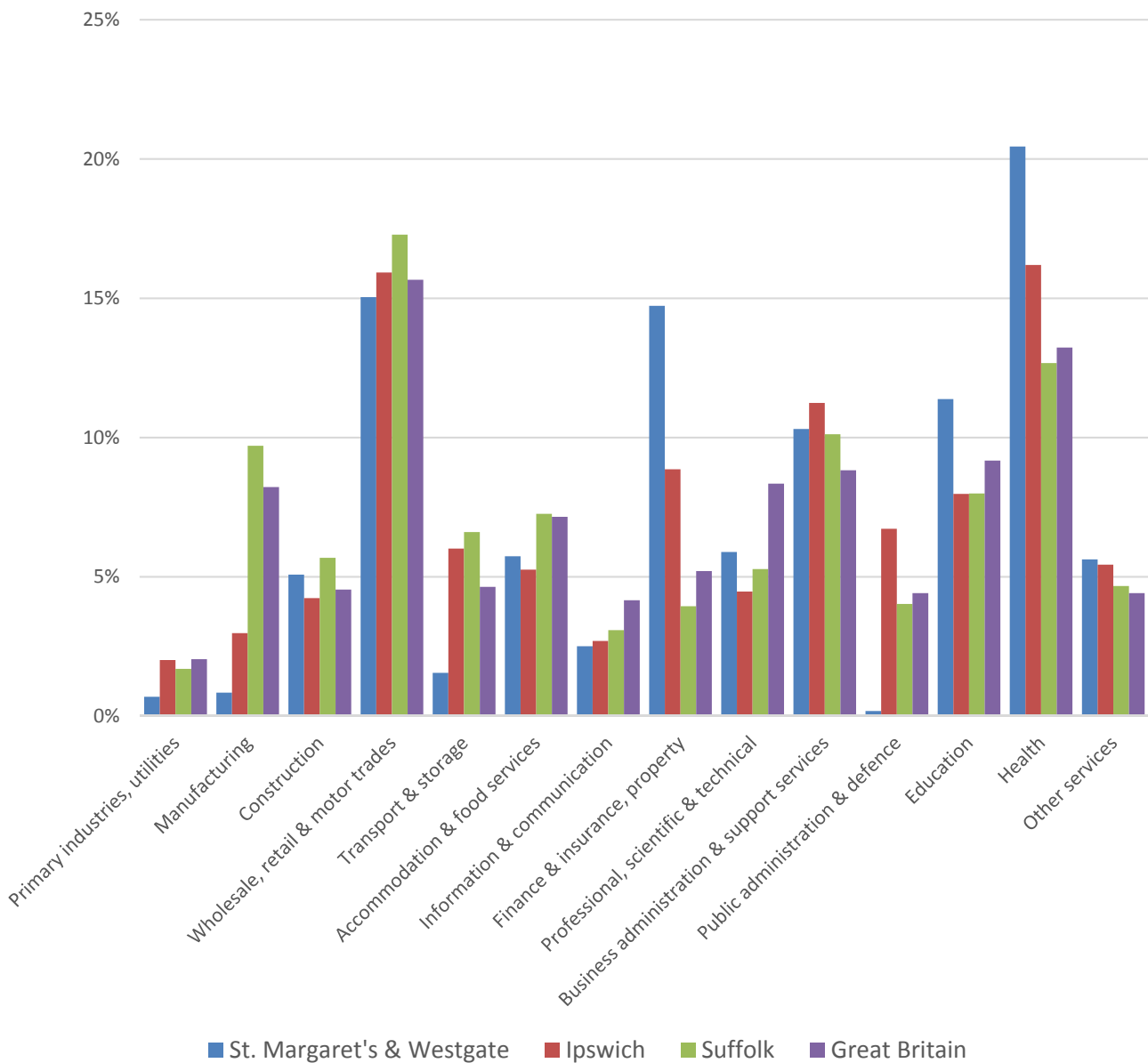


- According to the latest data (2011 Census), 87.1% (18,191) of the population of St Margaret's and Westgate are white, just below the level for Ipswich
- There are 2,706 (12.9%) people of black or minority ethnic origin in the division, slightly above the rate for Ipswich and almost three times the figure for the county as a whole
- St Margaret's and Westgate has a similar diversity profile to Ipswich, and generally higher proportions of minority ethnic groups than Suffolk as a whole

	All people	White		White British		Mixed		Asian and Asian British		Black and Black British		Other Ethnic Group		Black or Minority Ethnic Total	
	Count	Count	%	Count	%	Count	%	Count	%	Count	%	Count	%	Count	%
St. Margaret's and Westgate	20,897	18,191	87.1	16,101	77.0	756	3.6	1,113	5.3	518	2.5	319	1.5	2,706	12.9
Ipswich	133,384	118,596	88.9	110,624	82.9	4,816	3.6	5,740	4.3	3,096	2.3	1,136	0.9	14,788	11.1
Suffolk	728,163	693,195	95.2	661,458	90.8	12,472	1.7	13,131	1.8	6,854	0.9	2,511	0.3	34,968	4.8
England & Wales			86.0		80.5		2.2		6.7		2.8		0.4		12.1

# ECONOMY

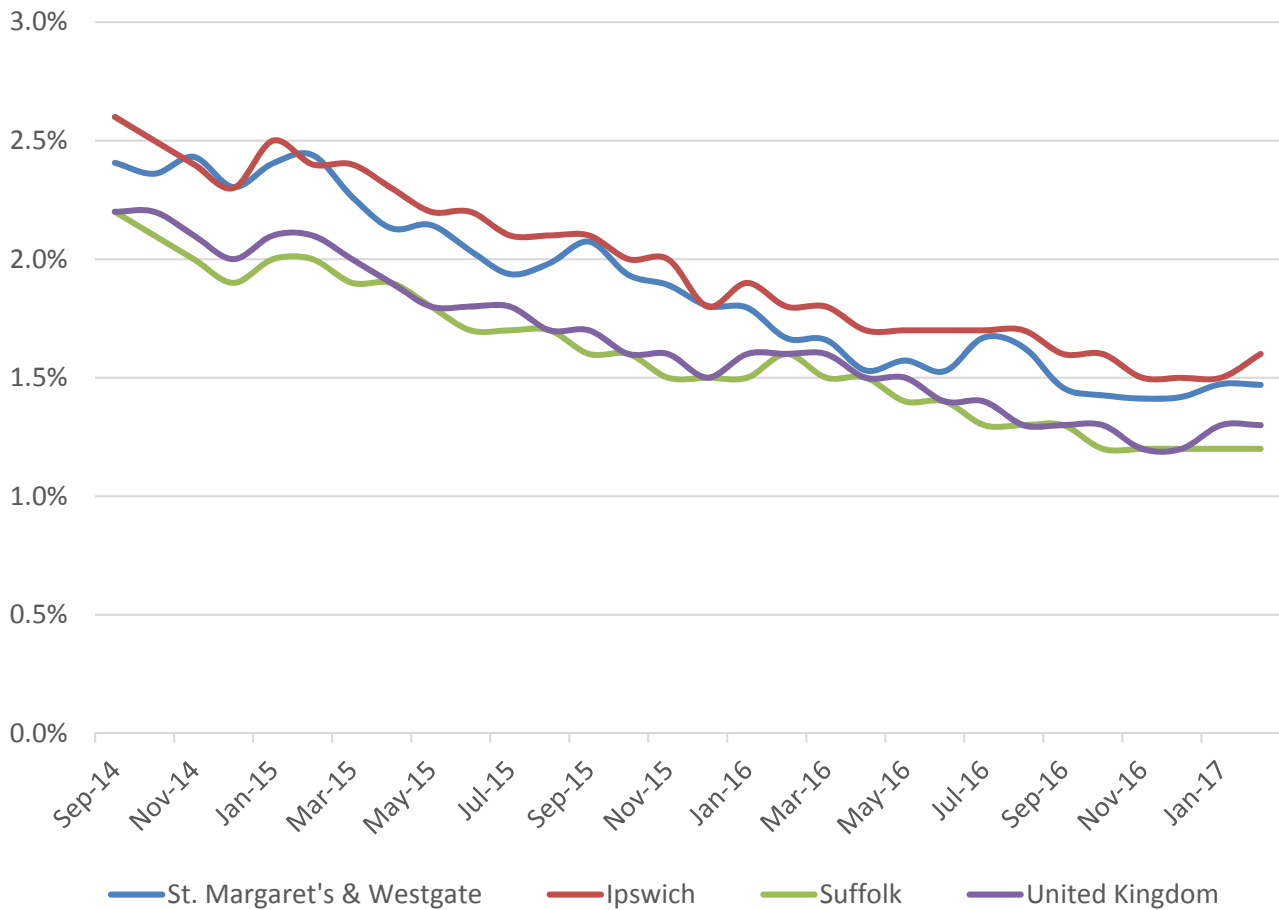
There are 6,300 people employed in St Margaret's and Westgate.



- The key employment sectors in St Margaret's and Westgate are health, finance, insurance and property and wholesale, retail and motor trades
- These three sectors account for one in every two jobs in the division
- Health and finance, insurance and property are particularly important as the proportion of these sectors in St Margaret's and Westgate is much higher than the national average

# LABOUR MARKET

## JOB SEEKERS ALLOWANCE CLAIMANT RATE



- St Margaret's and Westgate has seen a steady decrease in Job Seekers Allowance claimants over the last few years, in line with local and national trends
- Claimant unemployment levels in St Margaret's and Westgate tend to be lower than in Ipswich overall, but higher than the county and UK levels
- In percentage terms, 1.5% of the working age population are claiming JSA according to the latest data from February 2017. This is similar to the borough average, and just above the county and national levels



# SCHOOLS

## SCHOOL INFORMATION

### Schools in the Division

Name	Phase	Average cohort size at				Latest Ofsted	Latest Ofsted Date
		Foundation Stage (age 5)	KS2 (age 11)	KS4 (age 16)	KS5 (age 18)		
Springfield Infant School & Nursery	Infant	86				Good	24/01/2017
Springfield Junior School	Junior		86			Outstanding	01/10/2014
Dale Hall CP School	Primary	59	56			Good	03/03/2016
Handford Hall Primary School	Primary	44	40			Good	14/06/2016
St Margaret's CEVAP School	Primary	59	30			Good	22/10/2014
St Helen's Primary School	Primary	59	57			Not yet inspected as an Academy	
Westbridge	PRU			5			

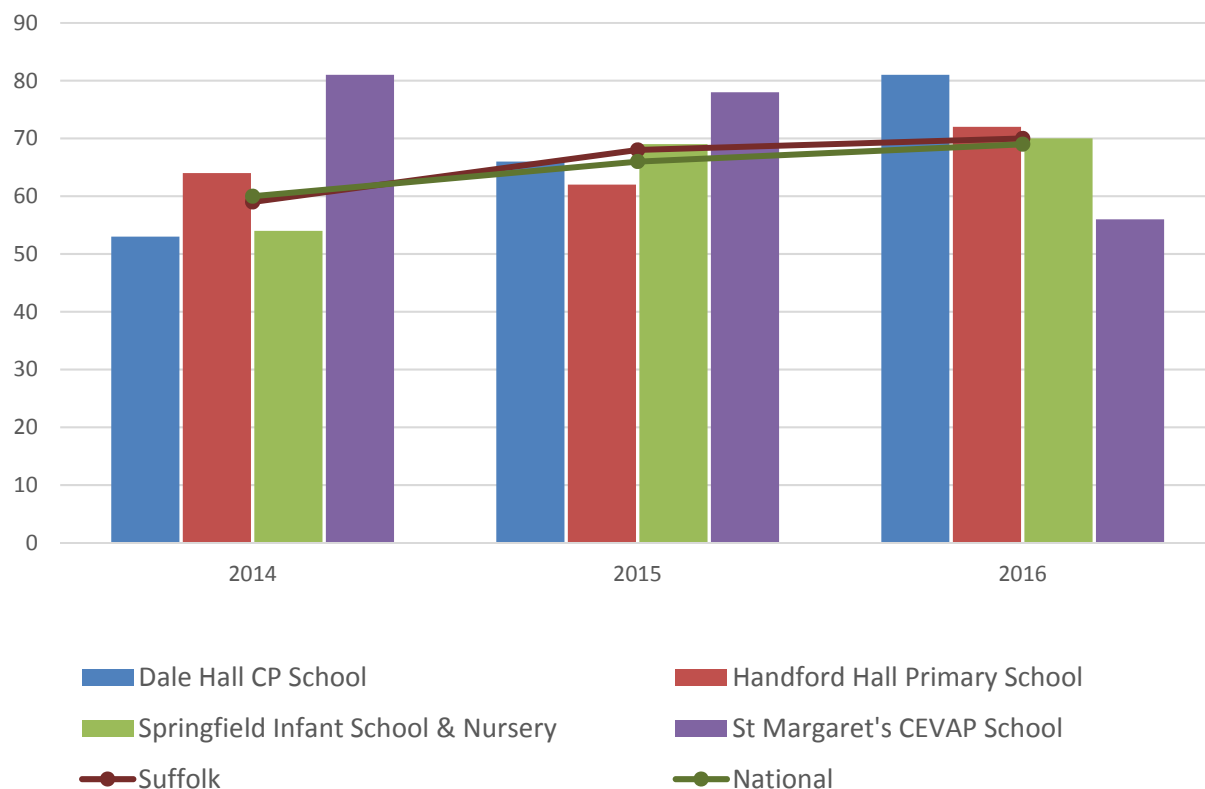
### School Catchment overlaps with the Division

		Average cohort size at					
Name	Phase	Foundation Stage (age 5)	KS2 (age 11)	KS4 (age 16)	KS5 (age 18)	Latest Ofsted	Latest Ofsted Date
Sidegate Primary School	Primary	89	92			Not yet inspected as an Academy	
Rushmere Hall Primary School	Primary	80	60			Requires Improvement	03/06/2015
Northgate High School	Upper		2	222	259	Good	15/12/2015
Ormiston Endeavour Academy	Upper			96		Good	08/12/2016
Stoke High School - Ormiston Academy	Upper			160		Requires Improvement	11/05/2016
Westbourne Academy	Upper		3	199		Requires Improvement	08/11/2016

# SCHOOL ATTAINMENT

## Foundation Stage Profile (reception)

% pupils achieving Good Level of Development

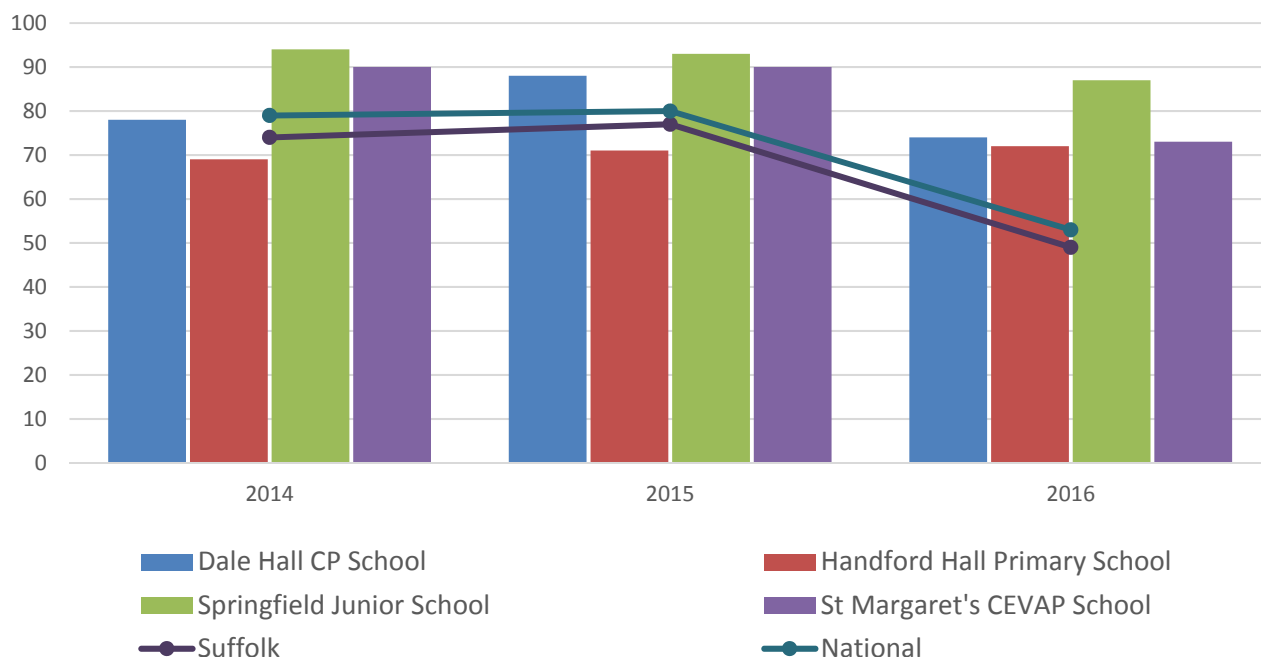


- Attainment for the schools in this division has generally been improving in the last three years, the most significant change having been made by Dale Hall CP School which has improved steadily in each year to become the school with the highest attainment in 2016, comfortably above the Suffolk and national averages
- Springfield Infant School and Nursery has also seen steadily improving attainment over the past three years
- By contrast, attainment at St Margaret's CEVAP School was well above county and national averages in 2014 and 2015, but dipped significantly in 2016
- Attainment at Handford Hall Primary School has been the most consistent, having been above county and national averages in two of the last three years either side of a slight decline in 2015

## Key Stage 2 (age 11)

Pupil Achievement in all three subjects, Reading, Writing and Mathematics  
(2014–2015 as % Level 4 or better & 2016 % Expected Level or better)

In July 2016, there was a change in the way pupil achievement is measured at the end of KS2. Prior to 2016, pupils received National Curriculum Level grades for English and Maths, with L4 being the expected level at the end of Key Stage 2. In 2016 the measure scaled score and shows whether or not a pupil has achieved the national standard for that subject

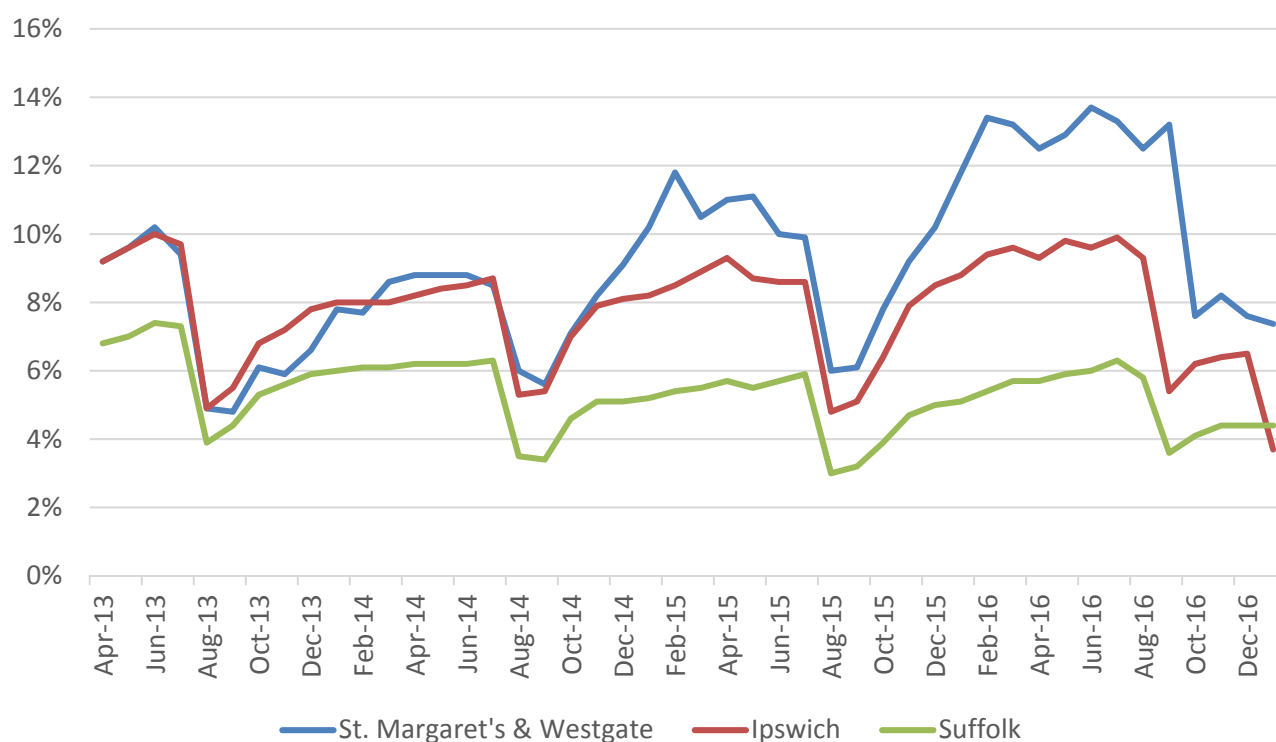


- Key Stage 2 attainment at all schools in St Margaret's and Westgate has generally been good in the last three years
- Dale Hall CP, Springfield Junior and St Margaret's CEVAP Schools have all seen attainment consistently at or above the county and national averages throughout the period
- Handford Hall was the only school not to meet county or national levels in 2014 and 2015, but has improved for 2016 and is now above county and national figures

## GCSE (Key Stage 4) (age 16)

There are no Upper schools located in the St Margaret's & Westgate division

## NEET % (NOT IN EDUCATION, EMPLOYMENT OR TRAINING)

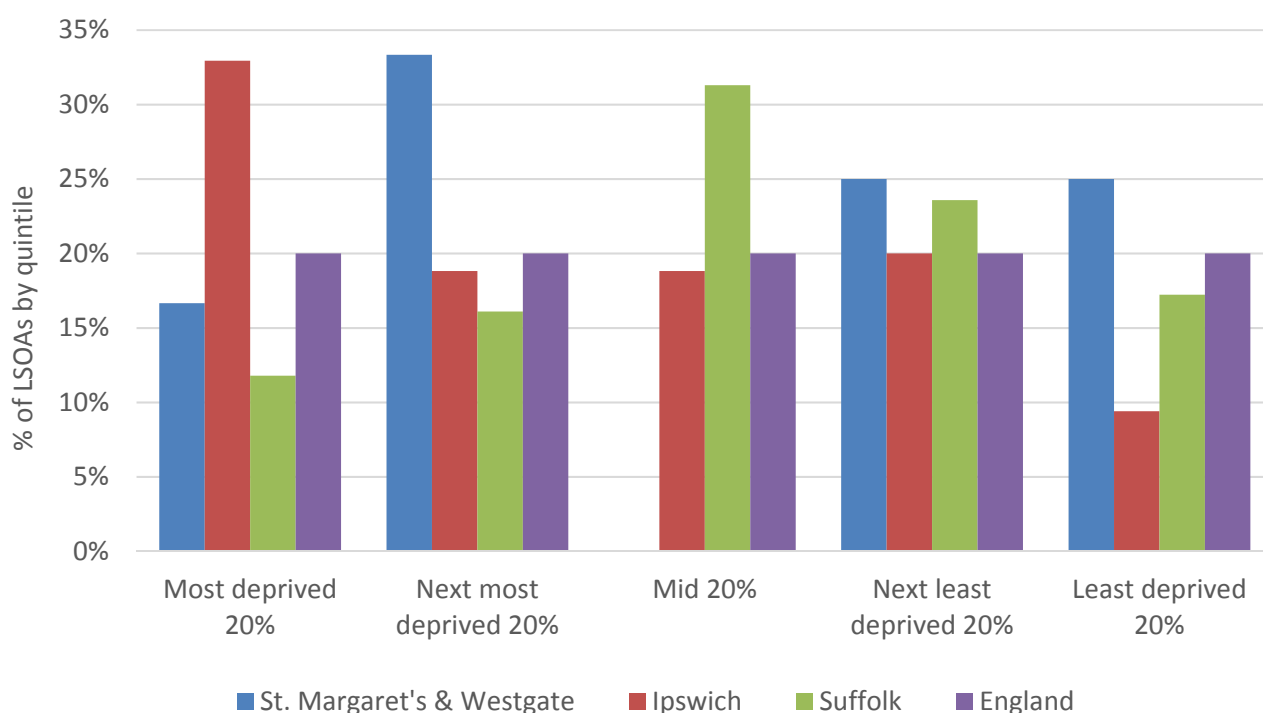


- In January 2017, 7.4% of 16-18 year olds (where current activity is known) were classified as NEET in St Margaret's and Westgate
- NEET levels in the division have generally followed a similar trend to the Ipswich and Suffolk levels over the last two years, but have been increasingly higher than both the borough and county figures

## INDEX OF MULTIPLE DEPRIVATION (IMD) 2015 (SEE MAP OVERLEAF)

The IMD combines a number of indicators, chosen to cover a range of economic, social and housing issues, into a single deprivation score for each small area in England. This allows each area to be ranked relative to one another according to their level of deprivation. Small areas (Lower Super Output Areas, average population 1,500) are most usually described as being in 1 of 5 quintile bands. The bottom quintile represents the 20% of areas that are the most deprived in the country; these are shaded red on the map. The top quintile represents the least deprived areas in the country, and is shaded green.

The Index is widely used to analyse patterns of deprivation, identify areas that would benefit from special initiatives or programmes and as a tool to determine eligibility for specific funding streams.



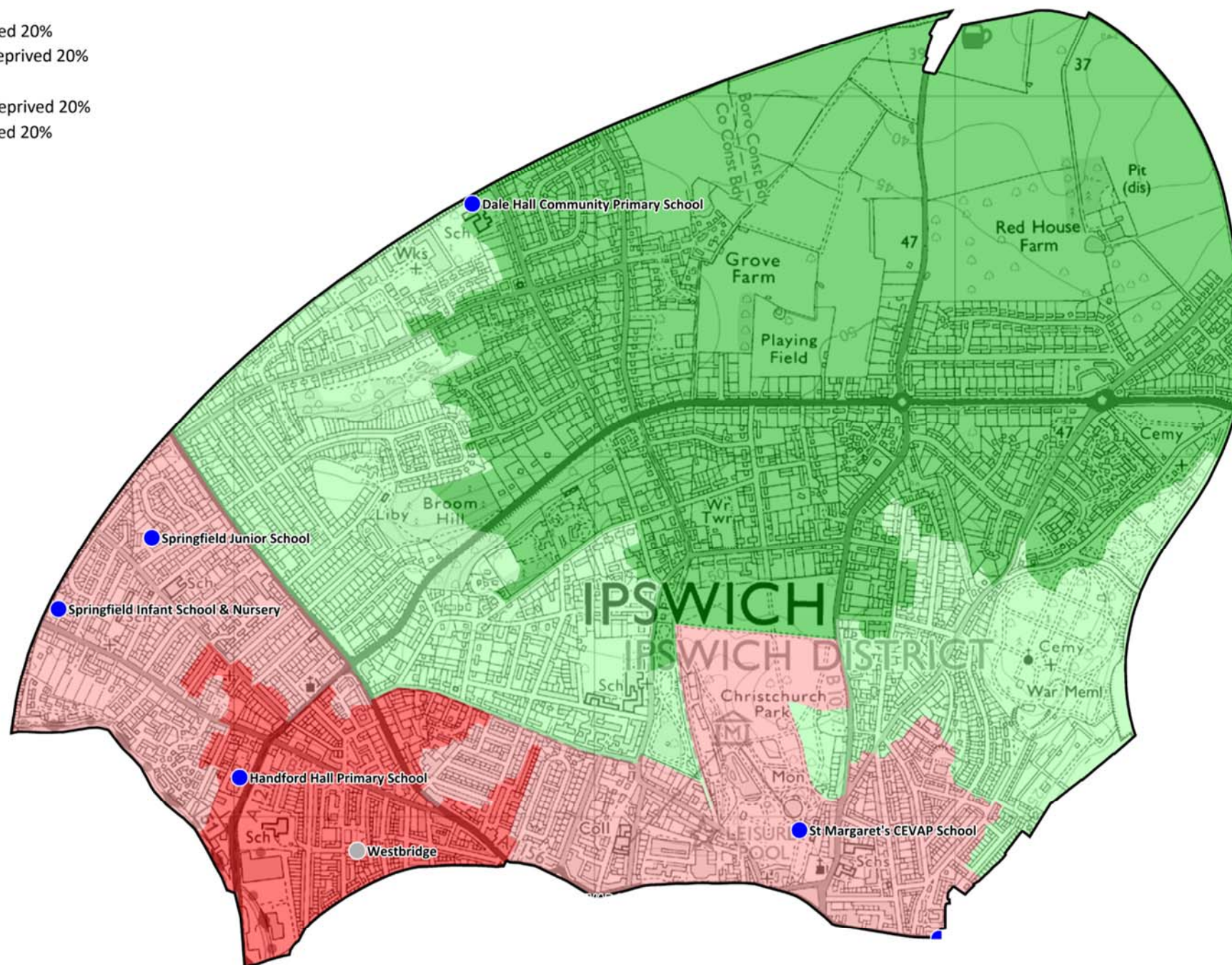
- The IMD 2015 shows that relative deprivation levels in St Margaret's and Westgate are varied, with parts of the division among the least deprived 20% nationally but also in the most deprived 20%
- Of the twelve Lower Super Output Areas in the Division, two are in the most deprived 20%, four are in the next most deprived, and three are in each of the next least deprived and least deprived quintiles



### IMD 2015 quintile



### School Type



# HEALTH

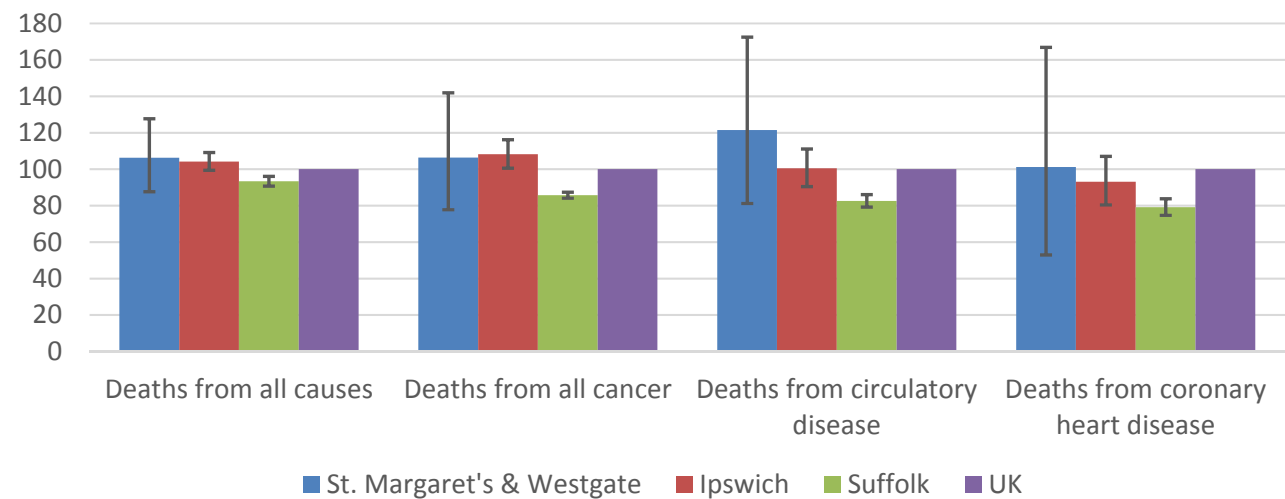
The local data used here is based on relatively small numbers. The confidence limits provide an indication of the reliability of the data. The 95% confidence intervals utilised on the chart provide a range within which there is 95% chance of the true result lying.

## LIFE EXPECTANCY AT BIRTH



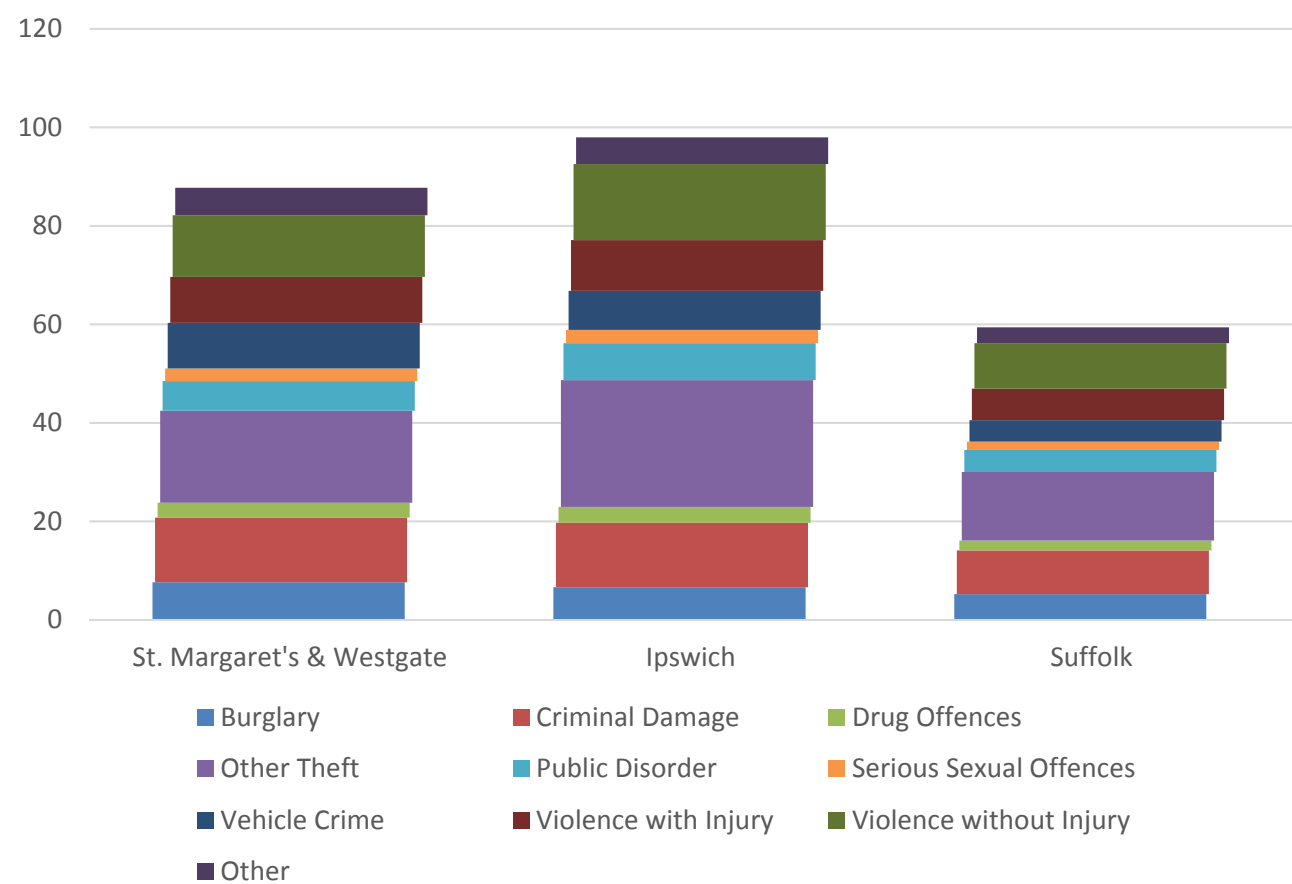
- The estimated life expectancy at birth for males in St Margaret’s and Westgate is 78.7 years, similar to that for Ipswich and the UK as a whole but below the Suffolk level
- Life expectancy at birth for females, at 82 years, is lower than in Ipswich, Suffolk and the UK overall

## DEATHS, UNDER 75 YEARS, STANDARDISED MORTALITY RATIO



- The rate of deaths from all causes for those under 75 years of age is similar to Ipswich, although slightly above Suffolk and the country as a whole
- The standardised mortality ratio data shown here means that for every 100 early deaths from all causes across the UK as a whole, there are an estimated 106 comparable deaths in St Margaret’s and Westgate
- Early deaths from circulatory and coronary heart diseases occur at a higher rate in St Margaret’s and Westgate, though the confidence intervals around these data are significant

# CRIME & COMMUNITY SAFETY



- The crime rate in St Margaret’s and Westgate is lower than for Ipswich, but higher than the county of Suffolk
- In 2015, there were 88 recorded crimes per 1,000 residents in the division compared to 98 in Ipswich and 59 across Suffolk
- “Other theft” is the most commonly recorded type of crime in St Margaret’s and Westgate, followed by criminal damage and violence without injury, mirroring the position in both Ipswich and the county

## ADDITIONAL INFORMATION

### Parishes in Division

Ipswich

## DATA SOURCES

Category	Indicator	Source
Demographic Profile	Quinary population table 2015	ONS 2015 mid-year population estimates
	Population pyramid 2015	ONS 2015 mid-year population estimates
	Ethnicity 2011	ONS 2011 Census
Economy	Employment by broad industrial sector 2015	ONS Business Register and Employment Survey via NOMIS
Labour market	Job Seekers Allowance Claimant Rate (% 16-64 population) 2014-2017	DWP via NOMIS
Education	School information and attainment 2014-2016	Suffolk County Council
	% 16-18 year olds NEET (Not in Employment, Education or Training) 2013-2017	Suffolk County Council
Deprivation	Index of Multiple Deprivation 2015	Department for Communities and Local Government
Health	Life expectancy at birth 2010-2014	Public Health England
Health	Standardised mortality ratio for deaths from all causes, cancer, circulatory disease and coronary heart disease, aged under 75 2010-2014. The standardised mortality ratio is the ratio of observed deaths in the study group to expected deaths in the general population.	Public Health England
Community Safety	Recorded crime rate per 1,000 resident population 2015	Suffolk Police

For more data and information about St Margaret's and Westgate Electoral Division, see the Suffolk Observatory [www.suffolkobservatory.info](http://www.suffolkobservatory.info)

