

# BIXLEY

## ELECTORAL DIVISION PROFILE 2017

This Division equates to Bixley ward

[www.suffolkobservatory.info](http://www.suffolkobservatory.info)



## **CONTENTS**

- Demographic Profile: Age & Ethnicity
- Economy and Labour Market
- Schools & NEET
- Index of Multiple Deprivation
- Health
- Crime & Community Safety
- Additional Information
- Data Sources

## ELECTORAL DIVISION PROFILES: AN INTRODUCTION

These profiles have been produced to support elected members, constituents and other interested parties in understanding the demographic, economic, social and educational profile of their neighbourhoods. We have used the latest data available at the time of publication.

Much more data is available from national and local sources than is captured here, but it is hoped that the profile will be a useful starting point for discussion, where local knowledge and experience can be used to flesh out and illuminate the information presented here.

The profile can be used to help look at some fundamental questions e.g.

- Does the age profile of the population match or differ from the national profile?
- Is there evidence of the ageing profile of the county in all the wards in the Division or just some?
- How diverse is the community in terms of ethnicity?
- What is the impact of deprivation on families and residents?
- Does there seem to be a link between deprivation and school performance?
- What is the breakdown of employment sectors in the area?
- Is it a relatively healthy area compared to the rest of the district or county?
- What sort of crimes are prevalent in the community?

A vast amount of additional data is available on the **Suffolk Observatory**

[www.suffolkobservatory.info](http://www.suffolkobservatory.info)

The Suffolk Observatory is a free online resource that contains all Suffolk's vital statistics; it is the one-stop-shop for information and intelligence about Suffolk. Through data, reports and profiles, the Suffolk Observatory provides a comprehensive picture of the County. It is a great source for useful facts and figures that can be used for writing reports and presentations, informing strategic and business planning, preparing funding applications or supporting academic research. Data is presented around the key themes of education and skills, economy and employment, health and care, population, deprivation, housing, environment, transport and travel and crime. All areas of the county are covered, right down to district, ward and parish level, with information easily accessible in a variety of formats. You can also build your own reports by different themes and topics.

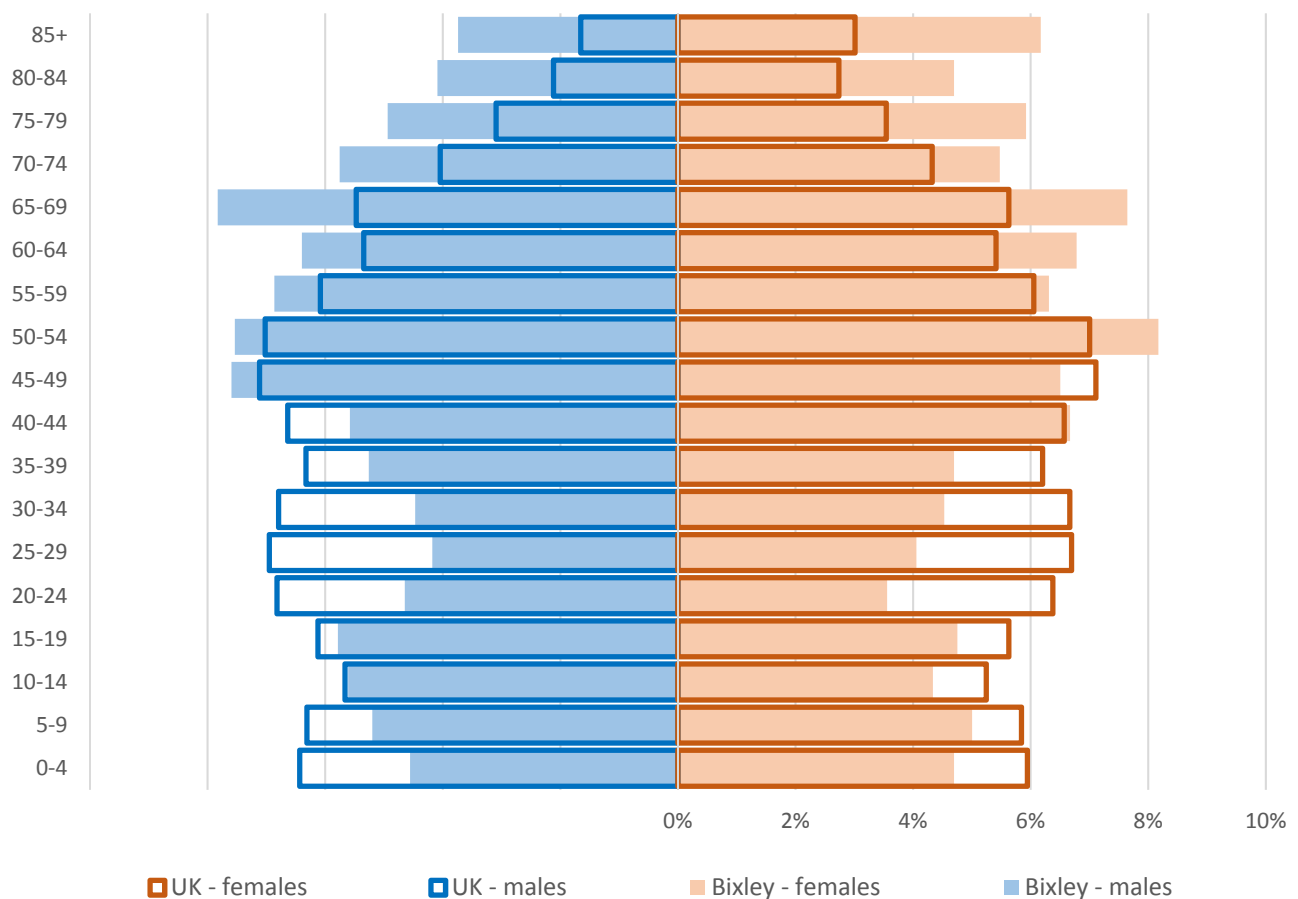
### Technical Notes:

1. Where Electoral Divisions do not exactly match ward boundaries, we have adopted a "best fit" approach to produce a dataset.
2. District, county and national level data is provided where possible to provide a context for comparisons.

## DEMOGRAPHIC PROFILE - AGE

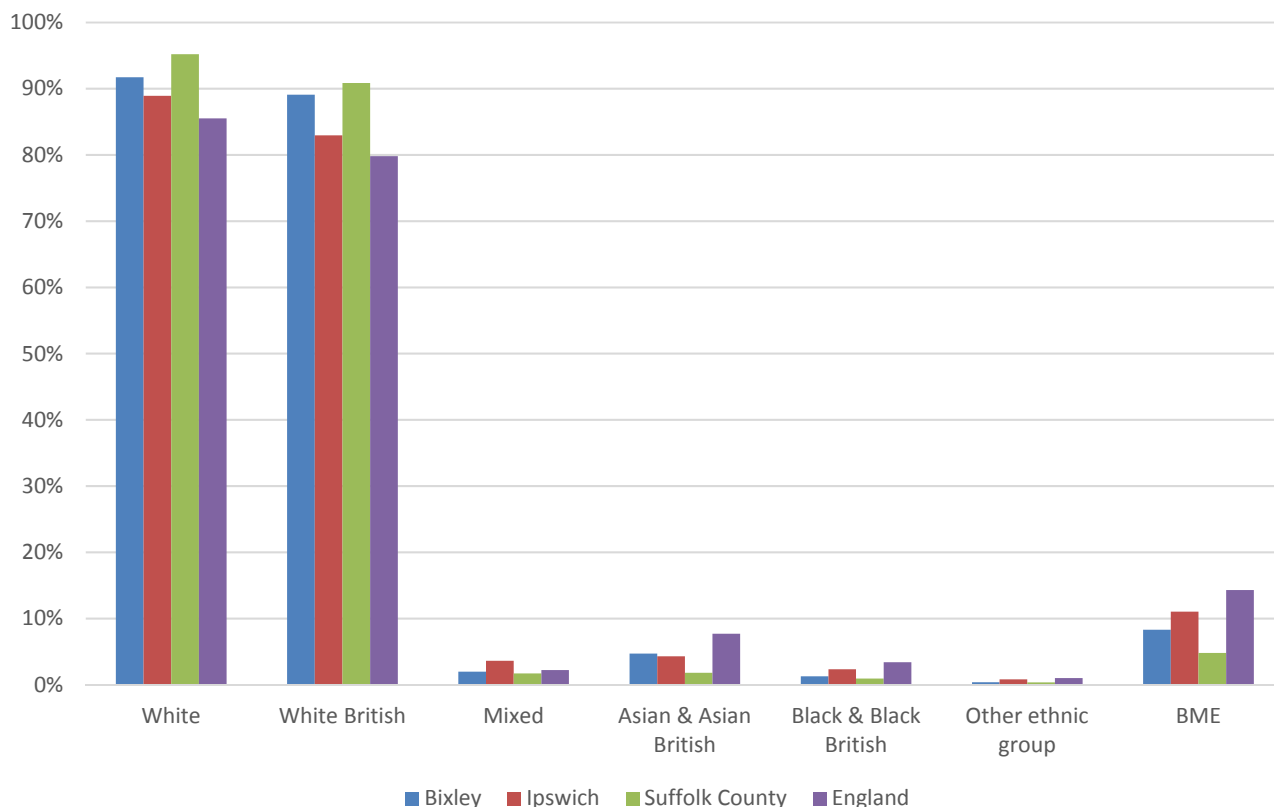
In mid-2015 the population of Bixley stood at 7,021, a decrease of 0.5% since the 2011 Census. The age structure of the division is set out below.

Bixley Division	
All Ages	7,021
0-4	325
5-9	358
10-14	348
15-19	369
20-24	287
25-29	289
30-34	316
35-39	349
40-44	431
45-49	494
50-54	552
55-59	462
60-64	463
65-69	543
70-74	394
75-79	382
80-84	309
85+	350



- The age pyramid for Bixley shows a higher than average proportion of men over 45 and women over 50
- The commonest age group in Bixley is 50-54 year olds, followed by 65-69 year olds. The number of people of retirement age looks set to increase markedly in the coming years
- There is a much lower than average number of people of working age, particularly between the ages of 20 and 39

## ETHNICITY

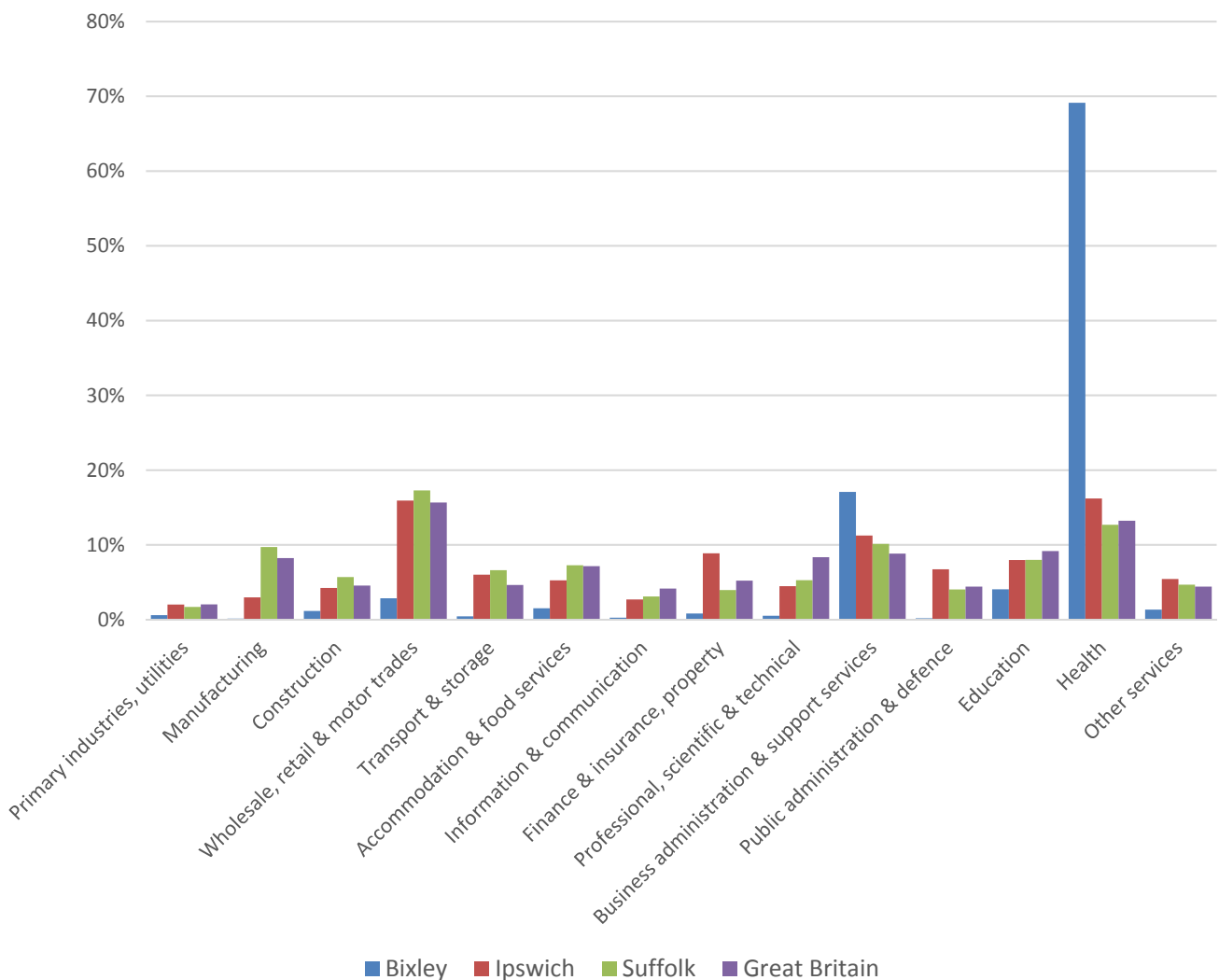


- According to the latest data (2011 Census), 91.7% (6,285) of the population of Bixley are white, a slightly higher proportion than for Ipswich generally
- 8.3% of the population are of black or minority ethnic origin, lower than for Ipswich as a whole
- Bixley has a less diverse population than Ipswich generally, but a higher proportion of minority ethnic groups than Suffolk as a whole

	All people	White		White British		Mixed		Asian and Asian British		Black and Black British		Other Ethnic Group		Black or Minority Ethnic Total	
	Count	Count	%	Count	%	Count	%	Count	%	Count	%	Count	%	Count	%
Bixley	7,055	6,285	91.7	6,285	89.1	138	2.0	331	4.7	90	1.3	26	0.4	585	8.3
Ipswich	133,384	118,596	88.9	110,624	82.9	4,816	3.6	5,740	4.3	3,096	2.3	1,136	0.9	14,788	11.1
Suffolk	728,163	693,195	95.2	661,458	90.8	12,472	1.7	13,131	1.8	6,854	0.9	2,511	0.3	34,968	4.8
England & Wales			86.0		80.5		2.2		6.7		2.8		0.4		12.1

# ECONOMY

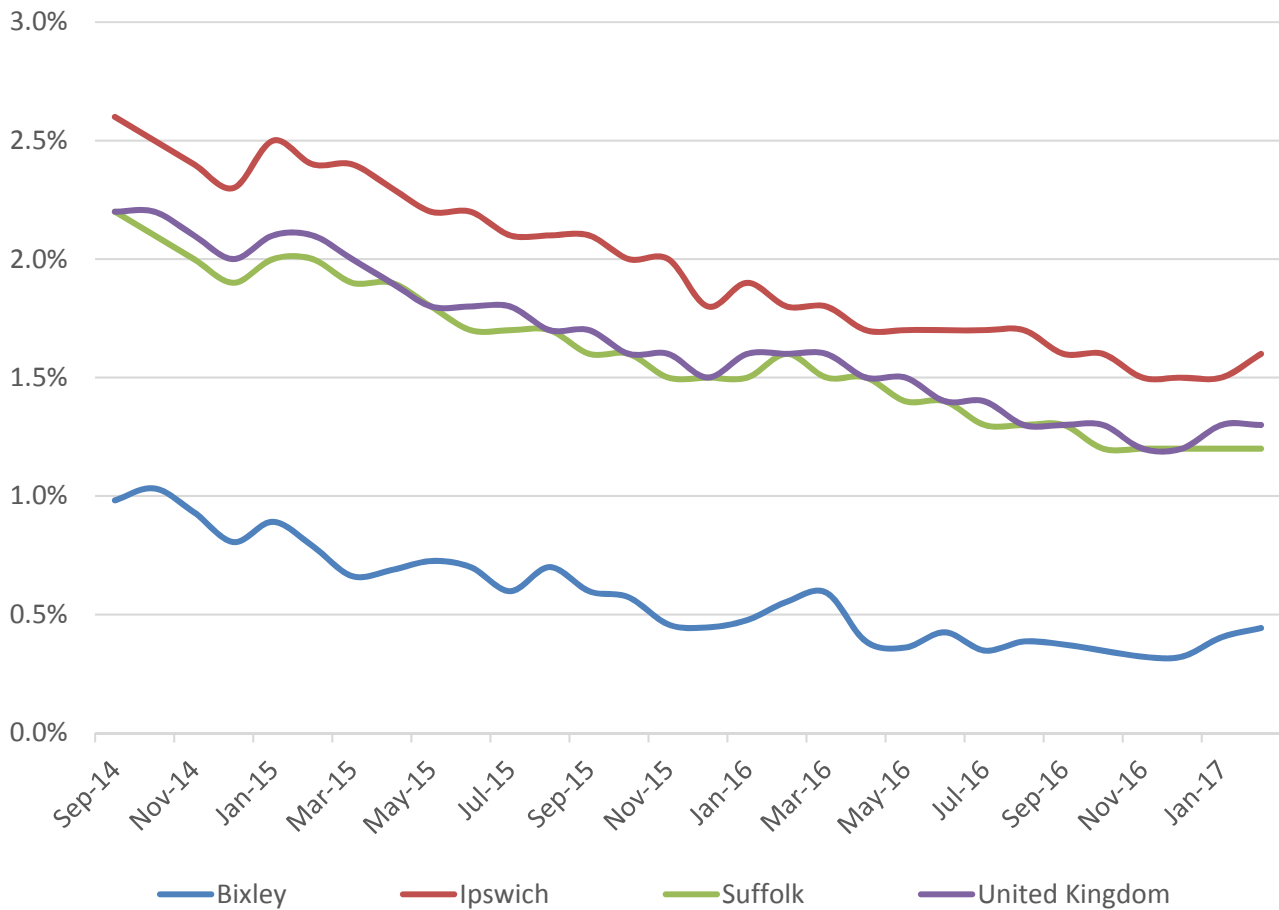
There are 7,300 people employed in Bixley.



- The key employment sector in Bixley is health, which accounts for almost 70% of all jobs in the division, a much higher proportion than for Ipswich, Suffolk and the country as a whole
- No other sector provides more than a small proportion of jobs except business, administration and support services at 17.1%

# LABOUR MARKET

## JOB SEEKERS ALLOWANCE CLAIMANT RATE



- Bixley, like the rest of Ipswich, has seen a reduction in the number of JSA claimants since 2014, in line with the national trend
- Claimant unemployment levels in Bixley are consistently below the borough, county and UK averages
- In February 2017, around 0.5% of the working age population are claiming JSA



# SCHOOLS

## SCHOOL INFORMATION

### Schools in the Division

Name	Phase	Average cohort size at:			Latest Ofsted	Latest Ofsted Date
		KS2 (age 11)	KS4 (age 16)	KS5 (age 18)		
St. Albans Catholic High School	Upper	6	161	84	Good	16/05/2013

### School Catchment overlaps with the Division

Name	Phase	Average cohort size at:				Latest Ofsted	Latest Ofsted Date
		Foundation Stage (age 5)	KS2 (age 11)	KS4 (age 16)	KS5 (age 18)		
Broke Hall CP School	Primary	86	86			Good	18/06/2014
Britannia Primary School & Nursery	Primary	90	88			Good	12/09/2013
Rushmere Hall Primary School	Primary	80	60			Requires Improvement	03/06/2015
Sidegate Primary School	Primary	89	92			Not yet inspected as an Academy	
Copleston High School	Upper			292	120	Good	24/04/2013
Northgate High School	Upper		2	222	259	Good	15/12/2015
Ipswich Academy	Upper		13	153	14	Requires Improvement	18/10/2016

## SCHOOL ATTAINMENT

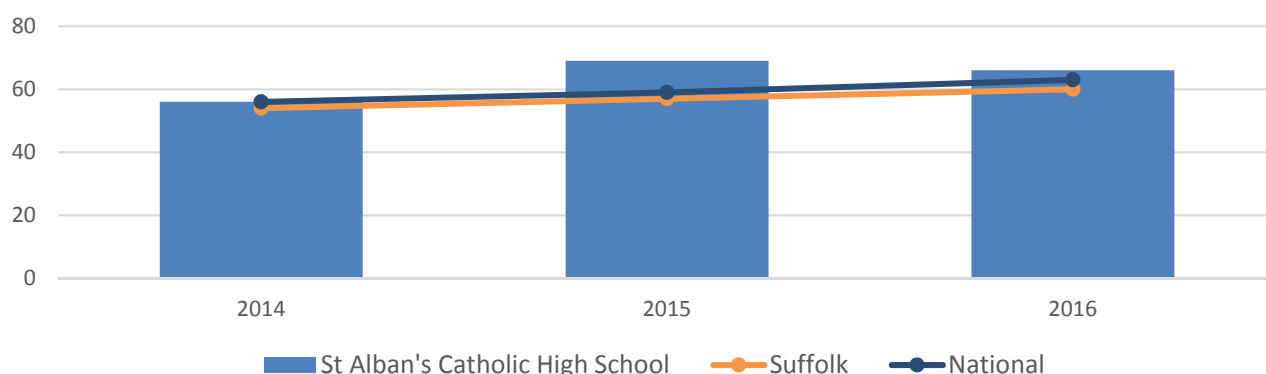
### Foundation Stage Profile (reception) & Key Stage 2 (age 11)

There are no primary schools located in the Division

### GCSE (Key Stage 4) (age 16)

% pupils achieving five or more GCSEs (or equivalent) at A\*-C including English and Mathematics

In July 2016, an additional measure of pupil achievement at Key Stage 4 was introduced but for the purposes of this profile and to demonstrate change over time, we have presented consistent data for the period 2014-2016 using the % pupils achieving five or more GCSEs (or equivalent) at A\*-C including English and Mathematics.

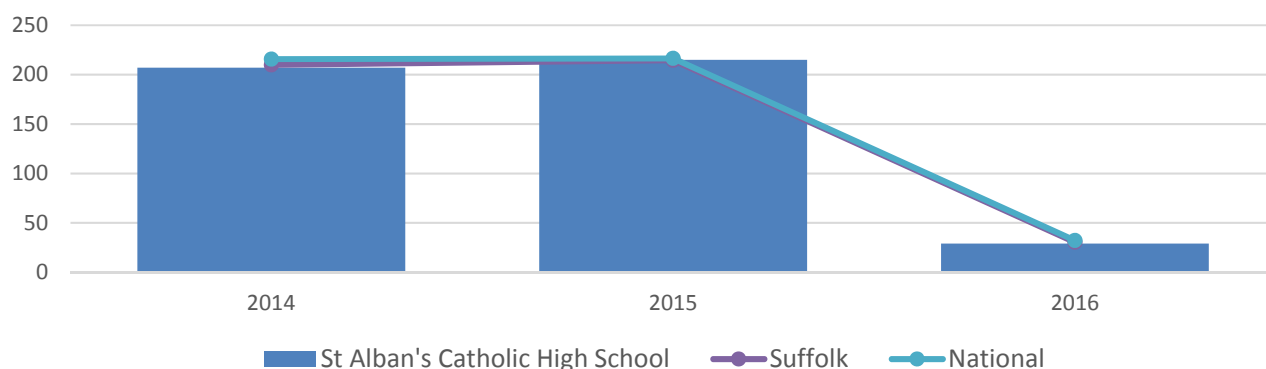


- GCSE attainment at St Alban's Catholic High School school was similar to the county and national averages in 2014, but rose above them in 2015
- Attainment fell slightly in 2016, but remains higher than Suffolk and the national figures overall

### A Level (Key Stage 5) (age 18)

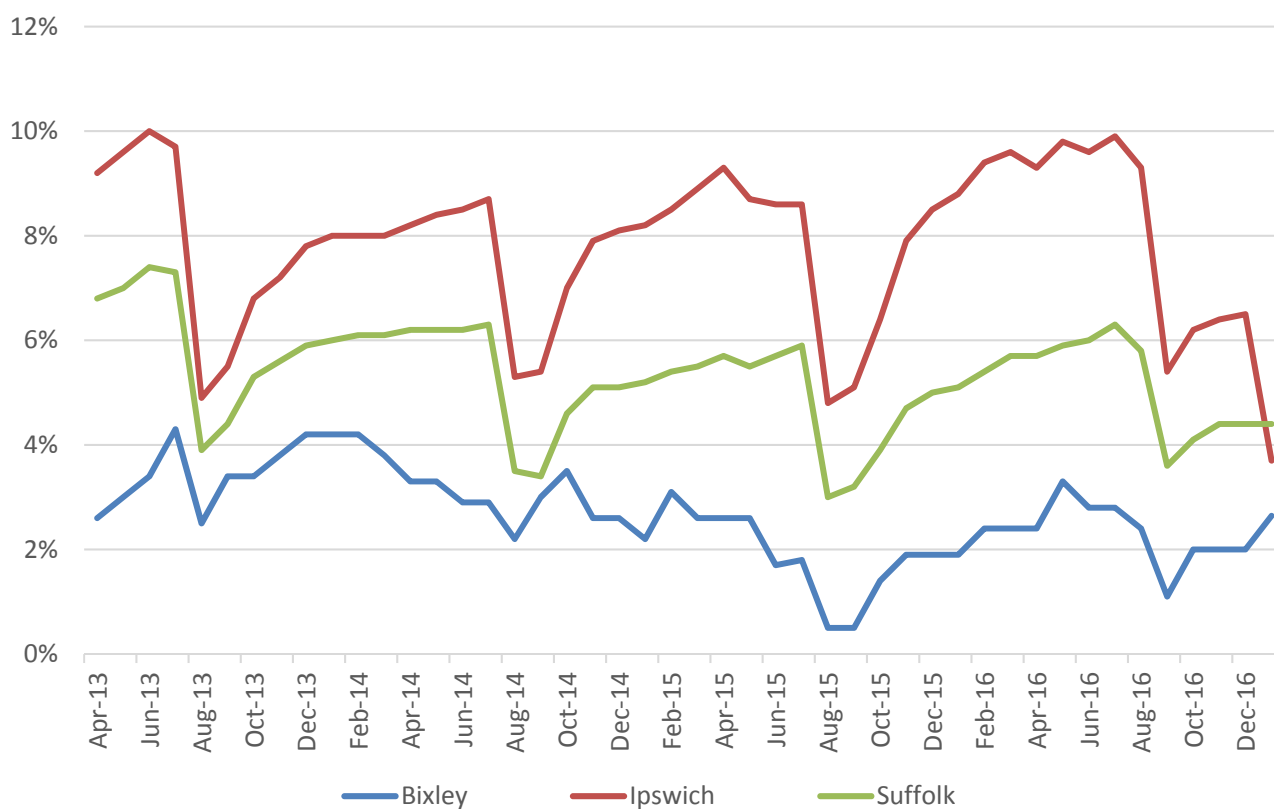
Average point score per student

In 2016 there was a change in the way pupil achievement is measured at the end of KS5 and so the trend over time should not therefore be considered. The relative level of attainment at schools in the Electoral Division versus the Suffolk and National averages can still be seen.



- A level attainment at St Albans has remained steady in the last three years
- It has remained very similar to that for the county and national averages

## NEET % (NOT IN EDUCATION, EMPLOYMENT OR TRAINING)

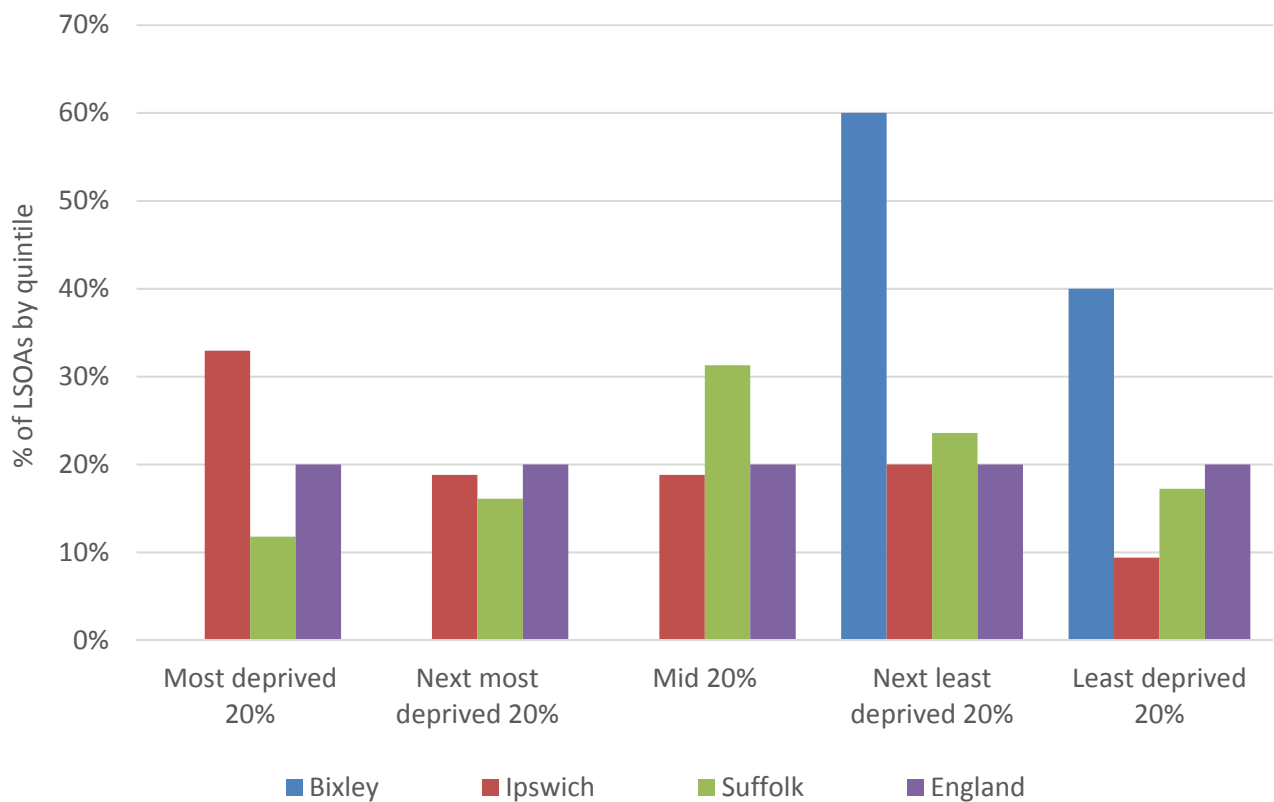


- In January 2017, 2.6% of 16-18 year olds were classified as NEET in Bixley (where current activity was known)
- NEET levels in Bixley are generally below the borough and county averages

# INDEX OF MULTIPLE DEPRIVATION (IMD) 2015 (SEE MAP OVERLEAF)

The IMD combines a number of indicators, chosen to cover a range of economic, social and housing issues, into a single deprivation score for each small area in England. This allows each area to be ranked relative to one another according to their level of deprivation. Small areas (Lower Super Output Areas, average population 1,500) are most usually described as being in 1 of 5 quintile bands. The bottom quintile represents the 20% of areas that are the most deprived in the country; these are shaded red on the map. The top quintile represents the least deprived areas in the country, and is shaded green.

The Index is widely used to analyse patterns of deprivation, identify areas that would benefit from special initiatives or programmes and as a tool to determine eligibility for specific funding streams.



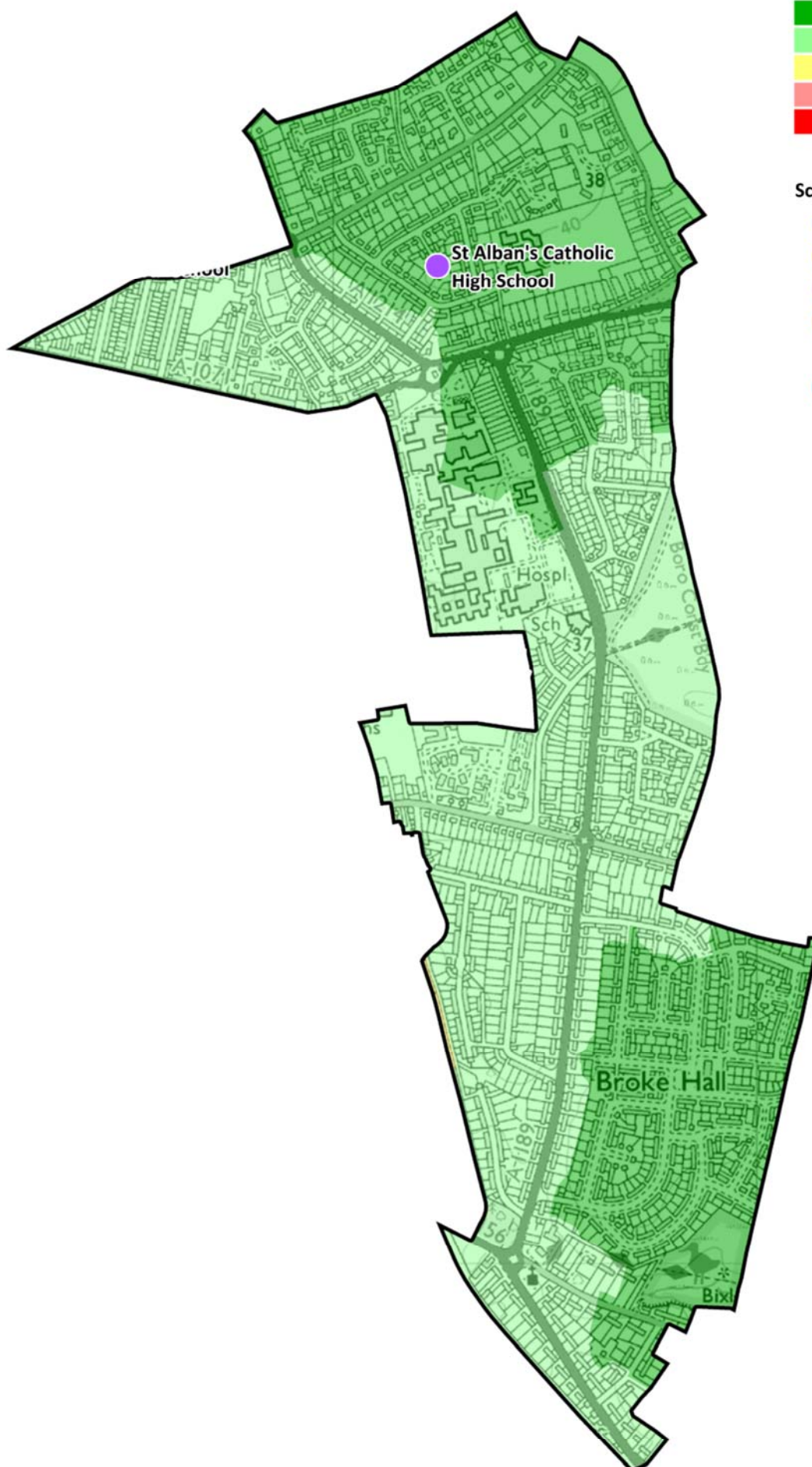
- The IMD 2015 shows that relative deprivation levels in Bixley are low
- Of the five Lower Layer Super Output Areas (LSOA) comprising the division, two are ranked in the top 20% least deprived LSOAs in the country and three in the next best 20%

#### IMD 2015 quintile

- Least deprived 20%
- Next least deprived 20%
- Mid 20%
- Next most deprived 20%
- Most deprived 20%

#### School Type

- Primary
- Middle
- Upper
- Special
- PRU
- Nursery



## HEALTH

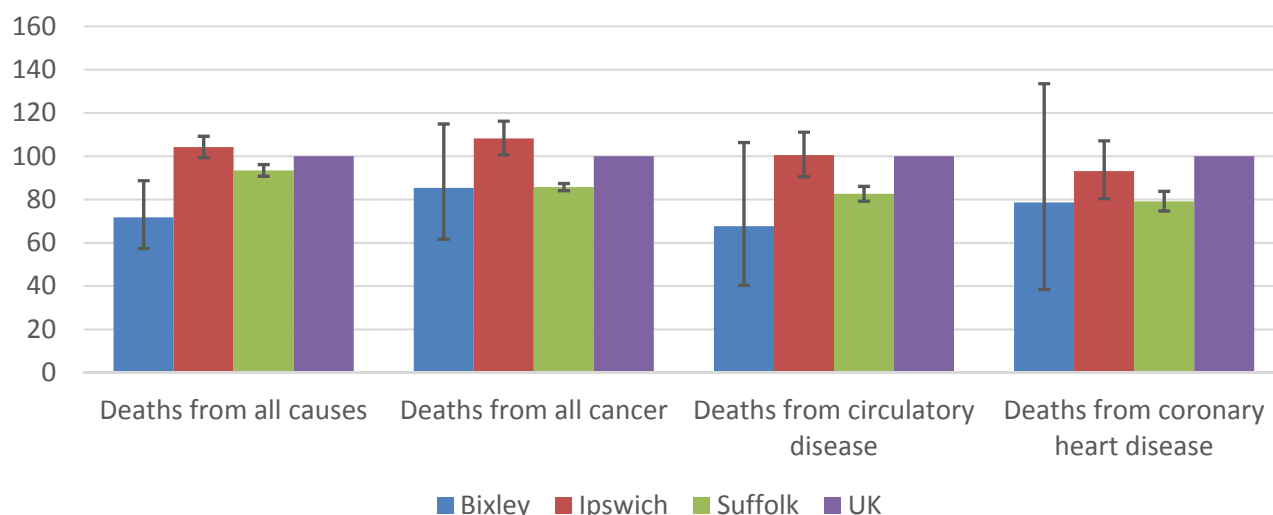
The local data used here is based on relatively small numbers. The confidence limits provide an indication of the reliability of the data. The 95% confidence intervals utilised on the chart provide a range within which there is 95% chance of the true result lying.

### LIFE EXPECTANCY AT BIRTH



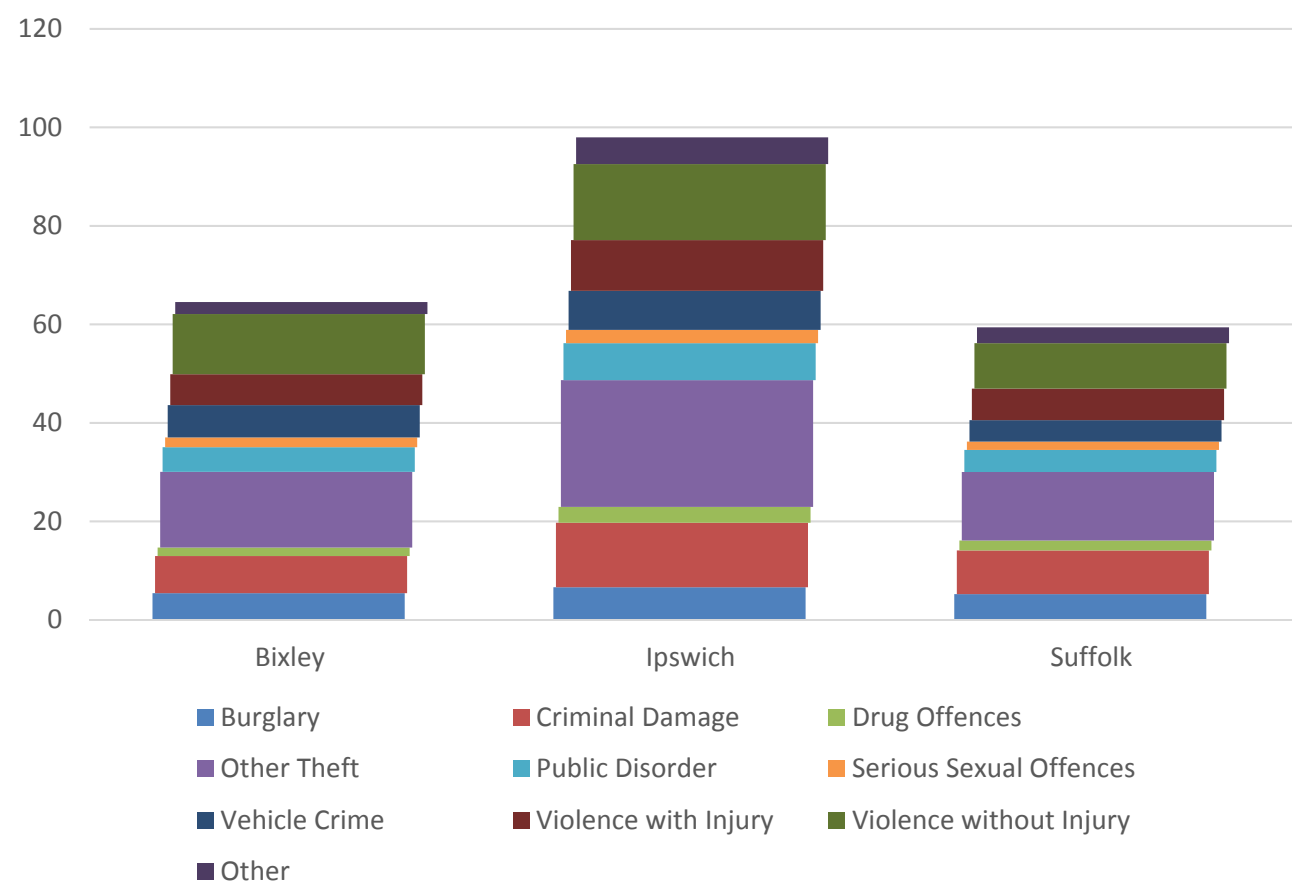
- For males, estimated life expectancy at birth (2010-2014) is 82.4 years, for females 86.2 years.
- Estimated life expectancy at birth in Bixley is well above the Ipswich, Suffolk and national averages for both males and females

### DEATHS, UNDER 75 YEARS, STANDARDISED MORTALITY RATIO



- Bixley has a lower overall rate of premature deaths (under the age of 75) than Ipswich, Suffolk and the UK overall
- The standardised mortality ratio data shown here means that for every 100 early deaths from all causes across the UK as a whole, there are an estimated 72 comparable deaths in Bixley
- Death rates from the specific causes of cancer, circulatory and coronary heart diseases in the division are lower than the borough and UK, but similar to the county overall

# CRIME & COMMUNITY SAFETY



- The crime rate in Bixley is around two thirds of that of Ipswich as a whole, and is only slightly higher than the overall county rate
- There were 65 crimes recorded per 1,000 residents in Bixley in 2015, compared to 98 in Ipswich Borough as a whole and 59 across Suffolk
- The most common crimes in the division are “other theft” and violence without injury

## ADDITIONAL INFORMATION

### Parishes in Division

Ipswich

## DATA SOURCES

Category	Indicator	Source
Demographic Profile	Quinary population table 2015	ONS 2015 mid-year population estimates
	Population pyramid 2015	ONS 2015 mid-year population estimates
	Ethnicity 2011	ONS 2011 Census
Economy	Employment by broad industrial sector 2015	ONS Business Register and Employment Survey via NOMIS
Labour market	Job Seekers Allowance Claimant Rate (% 16-64 population) 2014-2017	DWP via NOMIS
Education	School information and attainment 2014-2016	Suffolk County Council
	% 16-18 year olds NEET (Not in Employment, Education or Training) 2013-2017	Suffolk County Council
Deprivation	Index of Multiple Deprivation 2015	Department for Communities and Local Government
Health	Life expectancy at birth 2010-2014	Public Health England
Health	Standardised mortality ratio for deaths from all causes, cancer, circulatory disease and coronary heart disease, aged under 75 2010-2014. The standardised mortality ratio is the ratio of observed deaths in the study group to expected deaths in the general population.	Public Health England
Community Safety	Recorded crime rate per 1,000 resident population 2015	Suffolk Police

For more data and information about Bixley Electoral Division, see the Suffolk Observatory [www.suffolkobservatory.info](http://www.suffolkobservatory.info)

